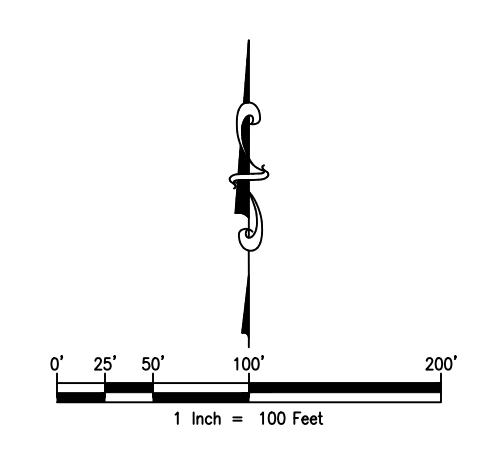
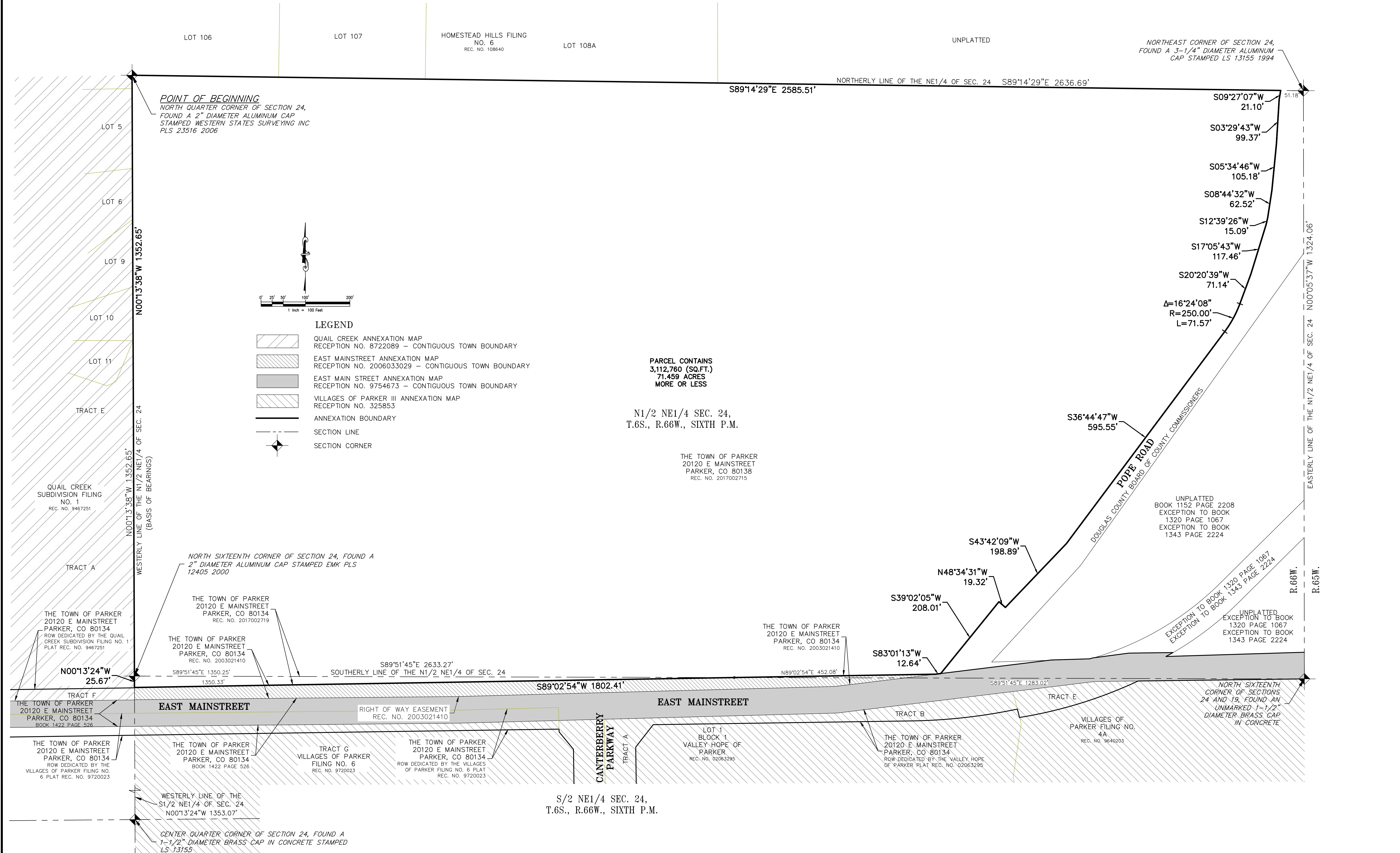


RAY J. HARVIE ANNEXATION MAP

TO THE TOWN OF PARKER

LOCATED IN THE NORTHEAST QUARTER OF SECTION 24, TOWNSHIP 6 SOUTH, RANGE 66 WEST OF THE SIXTH PRINCIPAL MERIDIAN,
COUNTY OF DOUGLAS, STATE OF COLORADO



- LEGEND**
- QUAIL CREEK ANNEXATION MAP RECEPTION NO. 8722089 - CONTIGUOUS TOWN BOUNDARY
 - EAST MAINSTREET ANNEXATION MAP RECEPTION NO. 2006033029 - CONTIGUOUS TOWN BOUNDARY
 - EAST MAIN STREET ANNEXATION MAP RECEPTION NO. 9754673 - CONTIGUOUS TOWN BOUNDARY
 - VILLAGES OF PARKER III ANNEXATION MAP RECEPTION NO. 325853
 - ANNEXATION BOUNDARY
 - SECTION LINE
 - SECTION CORNER

PARCEL CONTAINS
3,112,760 (SQ.FT.)
71.459 ACRES
MORE OR LESS

N1/2 NE1/4 SEC. 24,
T.6S., R.66W., SIXTH P.M.

THE TOWN OF PARKER
20120 E MAINSTREET
PARKER, CO 80138
REC. NO. 2017002715

SCALE 1"=100'	DATE DEC 04/02/2018	REVISED PER TOWN COMMENTS	BY	REVISION DESCRIPTION
<p>HARVIE ANNEXATION MAP TOWN OF PARKER DOUGLAS COUNTY, COLORADO</p> <p>PREPARED FOR THE TOWN OF PARKER 20120 EAST MAINSTREET, PARKER, CO 80138</p>				
<p>300 East Mineral Ave., Suite 1 Littleton, Colorado, 80122 Phone: (303) 713-1898 Fax: (303) 713-1897 www.aztecconsultants.com</p>				
<p>SHEET 2 OF 2 SHEETS</p> <p>24917-03 JOB NO.</p>				

FOR AND ON BEHALF OF
AZTEC CONSULTANTS, INC