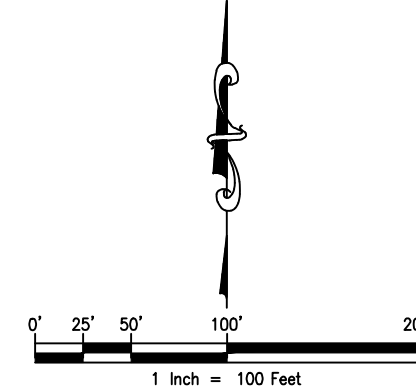
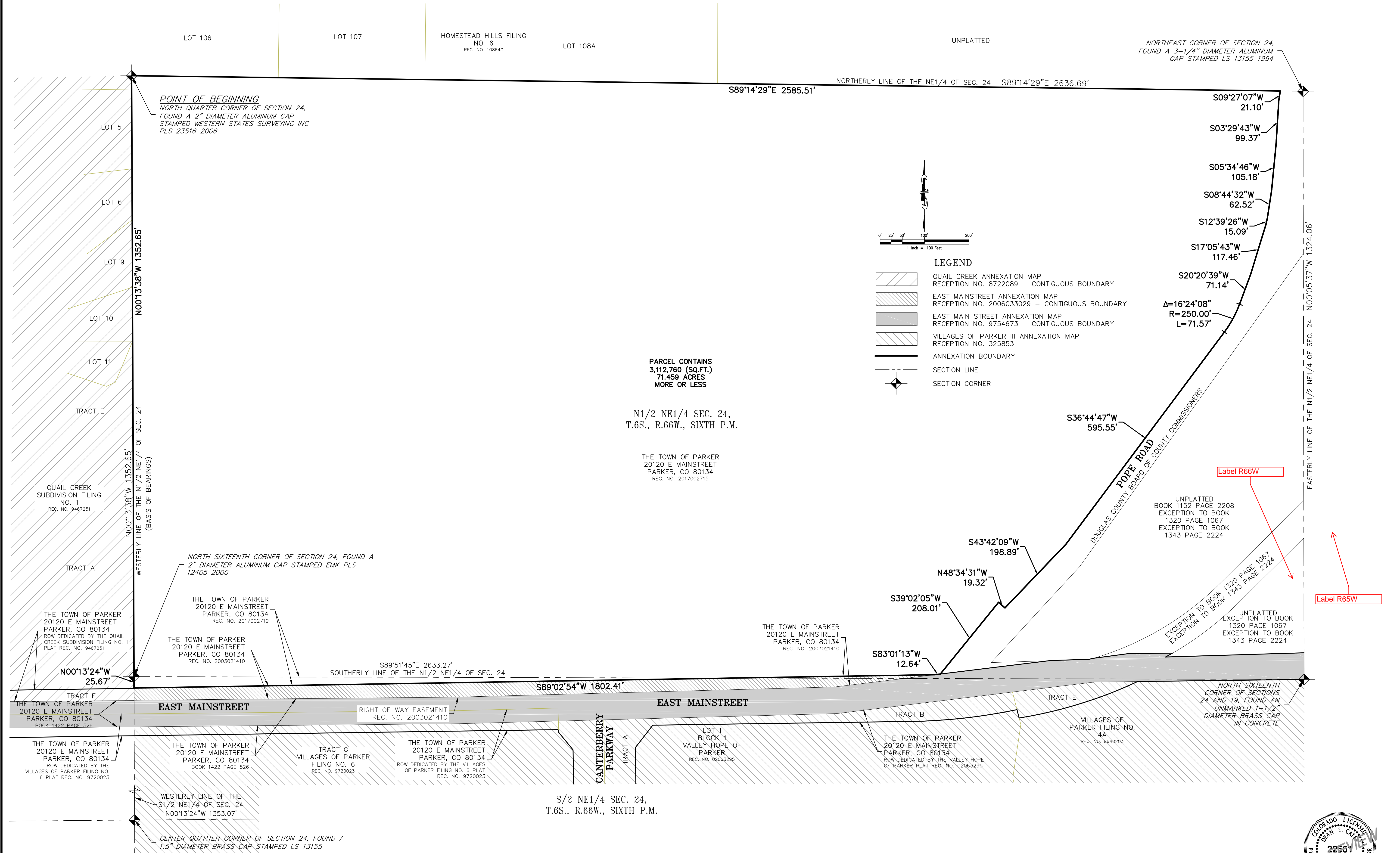


RAY J. HARVIE ANNEXATION MAP

TO THE TOWN OF PARKER

LOCATED IN THE NORTHEAST QUARTER OF SECTION 24, TOWNSHIP 6 SOUTH, RANGE 66 WEST OF THE SIXTH PRINCIPAL MERIDIAN,
COUNTY OF DOUGLAS, STATE OF COLORADO



- LEGEND**
- QUAIL CREEK ANNEXATION MAP RECEPTION NO. 8722089 - CONTIGUOUS BOUNDARY
 - EAST MAINSTREET ANNEXATION MAP RECEPTION NO. 2006033029 - CONTIGUOUS BOUNDARY
 - EAST MAIN STREET ANNEXATION MAP RECEPTION NO. 9754673 - CONTIGUOUS BOUNDARY
 - VILLAGES OF PARKER III ANNEXATION MAP RECEPTION NO. 325853
 - ANNEXATION BOUNDARY
 - SECTION LINE
 - SECTION CORNER

PARCEL CONTAINS
3,112,760 (SQ.FT.)
71.459 ACRES
MORE OR LESS

N1/2 NE1/4 SEC. 24,
T.6S., R.66W., SIXTH P.M.

THE TOWN OF PARKER
20120 E MAINSTREET
PARKER, CO 80134
REC. NO. 2017002715

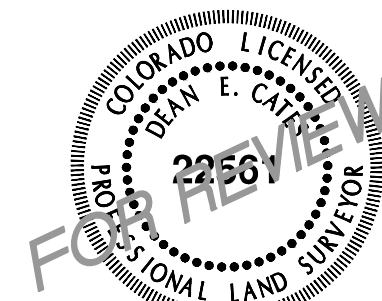
SCALE	1"=100'
DATE	04/08/2017
BY	
DATE	
REVISION DESCRIPTION	

AZTEC
CONSULTANTS, INC.

300 East Mineral Ave., Suite 1
Littleton, Colorado 80122
Phone: (303) 713-1898
Fax: (303) 713-1897
www.aztecconsultants.com

HARVIE ANNEXATION MAP
TOWN OF PARKER
DOUGLAS COUNTY, COLORADO

PREPARED FOR
THE TOWN OF PARKER
20120 EAST MAINSTREET, PARKER, CO 80138



FOR AND ON BEHALF OF
AZTEC CONSULTANTS, INC.

SHEET	2
OF	2 SHEETS
JOB NO.	24917-03