

Boondocks

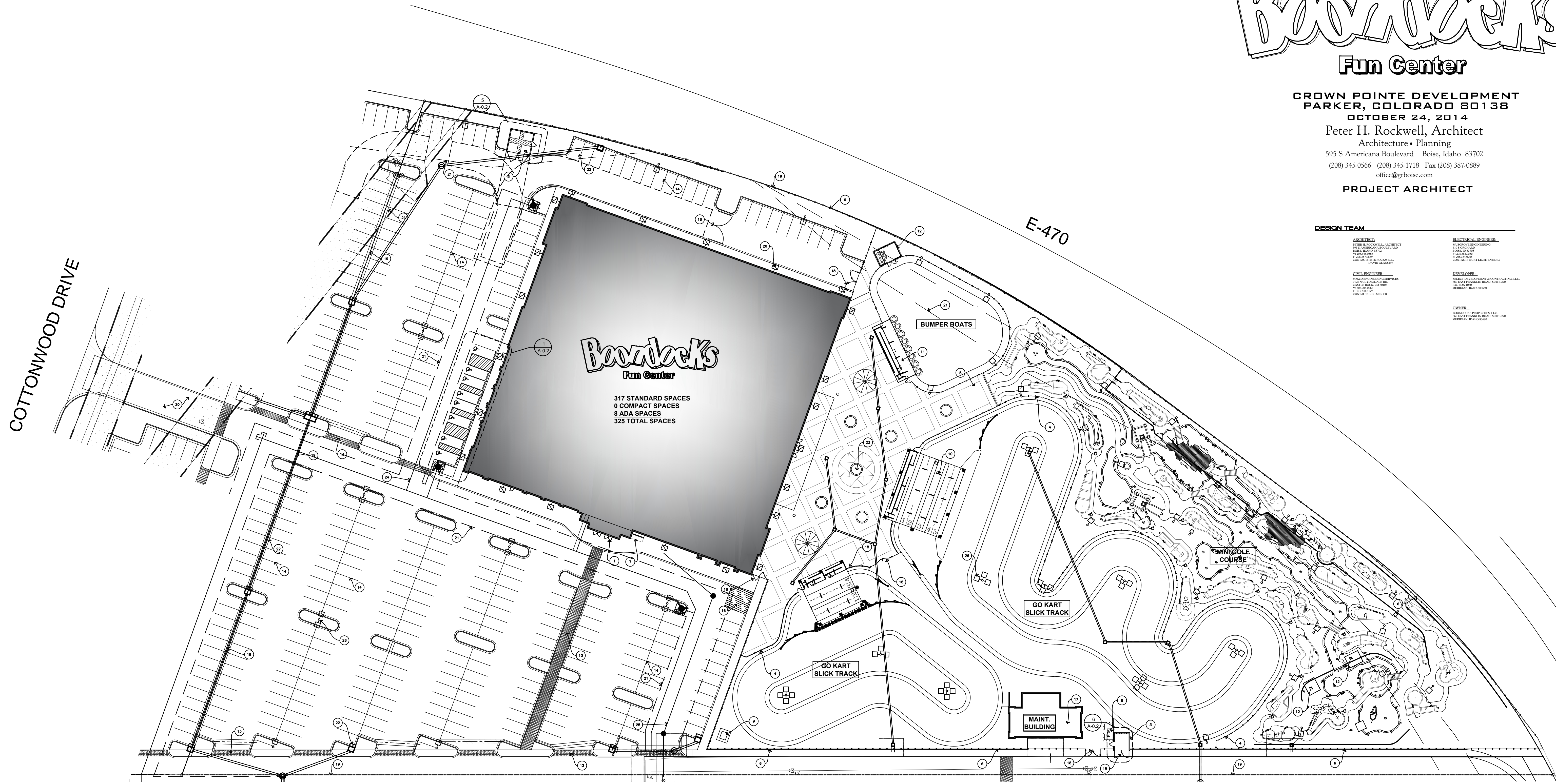
Fun Center

**CROWN POINTE DEVELOPMENT
PARKER, COLORADO 80138**
OCTOBER 24, 2014
 Peter H. Rockwell, Architect
 Architecture • Planning
 595 S Americana Boulevard Boise, Idaho 83702
 (208) 345-0566 (208) 345-1718 Fax (208) 387-0889
 office@grboise.com

PROJECT ARCHITECT

DESIGN TEAM

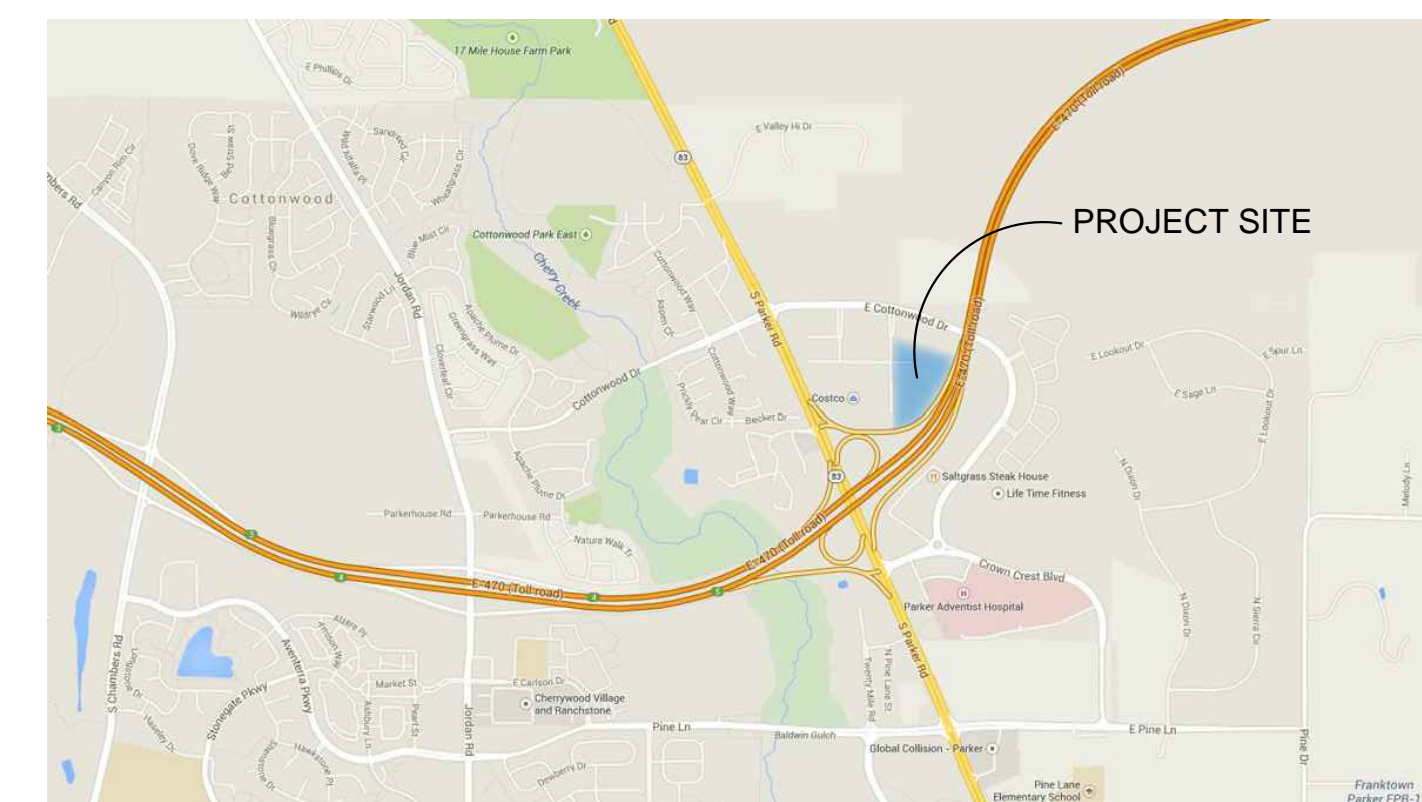
ARCHITECT PETER H. ROCKWELL, ARCHITECT ARCHITECTURE • PLANNING 595 S AMERICANA BOULEVARD BOISE, IDAHO 83702 (208) 345-0566 (208) 345-1718 FAX (208) 387-0889 OFFICE@GRBOISE.COM	ELECTRICAL ENGINEER KEVIN J. HARRIS 1000 S. GARDEN LANE BOISE, IDAHO 83726 (208) 345-1718 FAX (208) 387-0889 OFFICE@GRBOISE.COM
CIVIL ENGINEER PETER H. ROCKWELL, ARCHITECT ARCHITECTURE • PLANNING 595 S AMERICANA BOULEVARD BOISE, IDAHO 83702 (208) 345-0566 (208) 345-1718 FAX (208) 387-0889 OFFICE@GRBOISE.COM	MECHANICAL ENGINEER KEVIN J. HARRIS 1000 S. GARDEN LANE BOISE, IDAHO 83726 (208) 345-1718 FAX (208) 387-0889 OFFICE@GRBOISE.COM



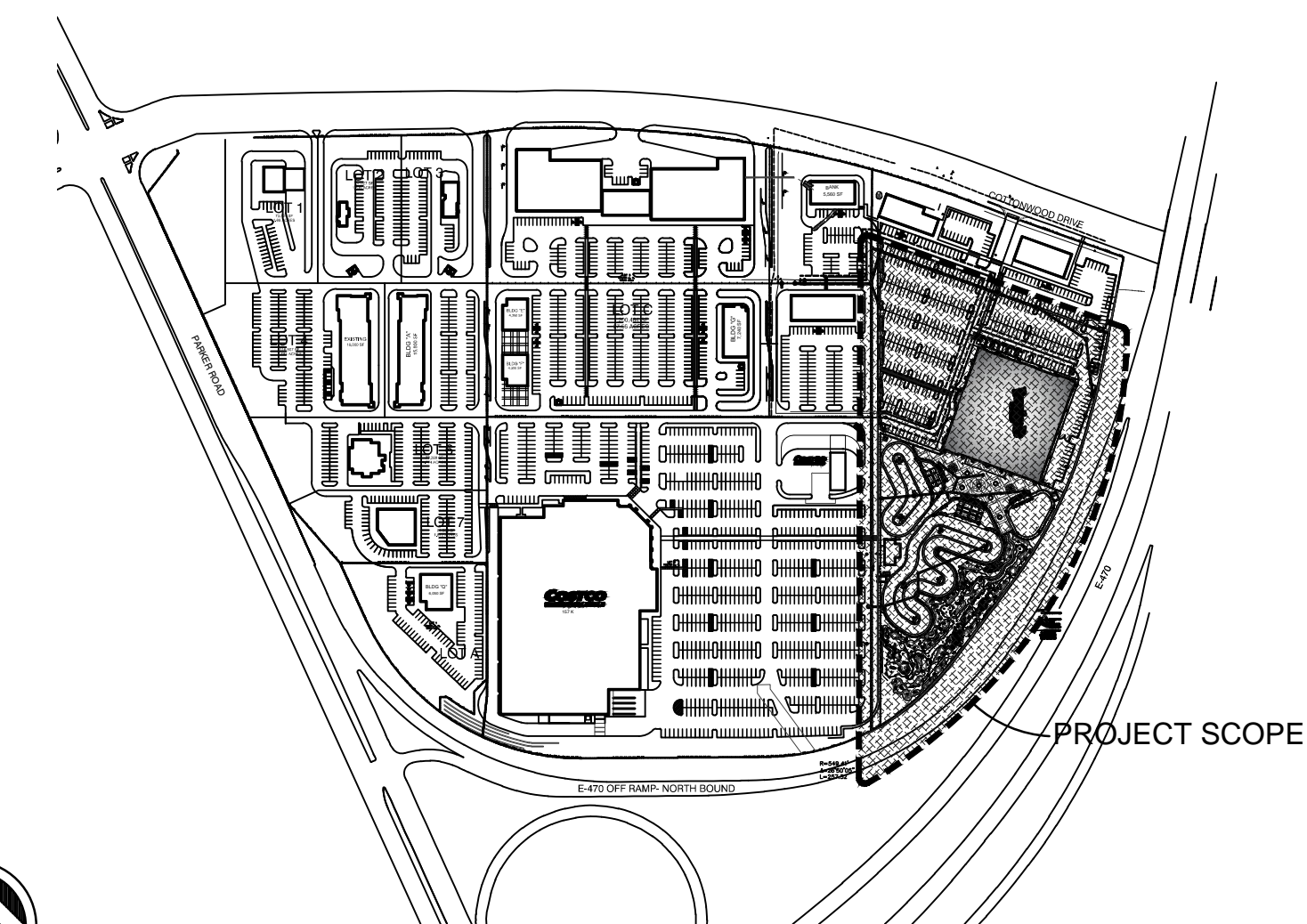
KEY NOTES

- 1 MAIN ENTRANCE
- 2 UNDERGROUND PROPANE TANK w/ 18 EQUALLY SPACED PIPE BOLLARDS, SEE DETAIL 3/A-0.2
- 3 TRASH ENCLOSURE, SEE SHEET A-6/0.2
- 4 4' TALL PREFINISHED METAL FENCE, AROUND GO KART TRACKS
- 5 5' TALL PREFINISHED METAL FENCE, AROUND BUMPER BOATS
- 6 6' TALL PREFINISHED METAL FENCE, AROUND PERIMETER
- 7 BIKE RACK AREA
- 8 FUEL STORAGE w/ 13 EQUALLY SPACED PIPE BOLLARDS.
- 9 TRANSFORMER MAINTAIN REQUIRED CLEARANCES
- 10 GO KART STAGING AREA
- 11 BUMPER BOATS STAGING AREA
- 12 PUMP HOUSE
- 13 STAMPED CONCRETE WALK
- 14 STANDARD PARK STALL, SEE 3/A0.2 FOR REQUIREMENTS
- 15 FIRE HYDRANT, VERIFY LOCATION WITH CIVIL
- 16 STRIPING FOR EMERGENCY VEHICLE ACCESS
- 17 MAINTENANCE BUILDING
- 18 6' TALL x 16' WIDE PREFINISHED METAL DOUBLE GATE w/ PADLOCK HASP
- 19 PROPERTY LINE
- 20 PAVED ACCESS TO EXTEND TO COTTONWOOD DRIVE
- 21 UTILITY OR E-470 EASEMENT, VERIFY WITH CIVIL
- 22 DRAINAGE SYSTEM, SEE CIVIL
- 23 FEATURE FOUNTAIN
- 24 WATER LINE, SEE CIVIL
- 25 SANITARY SEWER LINE, SEE CIVIL
- 26 SITE LIGHTING, SEE ELECTRICAL

SITE DEVELOPMENT PLAN
 NORTH SCALE 1" = 40'-0"



VICINITY
 NORTH SCALE NTS



KEY PLAN
 NORTH SCALE NTS

REVISIONS	
DESCRIPTION	DATE
OWNER CHANGES	2/16/15
SITE SUBMITTAL	3/11/15

OWNER
SELECT DEVELOPMENT & CONTRACTING, LLC
 660 EAST FRANKLIN ROAD, MERIDIAN, ID 83642

PROJECT
Boondocks Fun Center
 CROWN POINTE DEVELOPMENT
 PARKER, CO

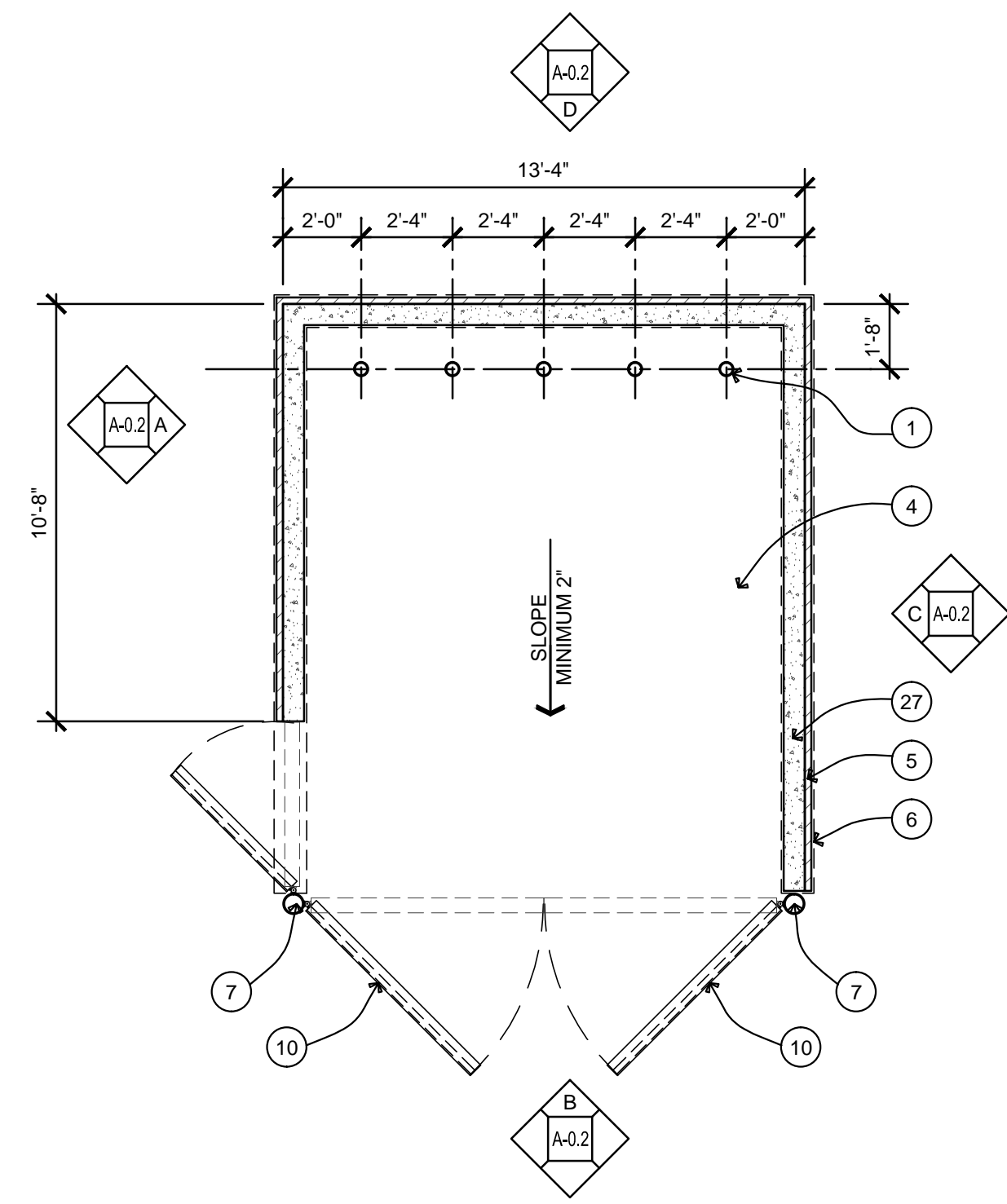
COPYRIGHT 2015

Peter H. Rockwell, Architect
 Architecture • Planning
 595 S Americana Boulevard Boise, Idaho 83702
 (208) 345-0566 (208) 345-1718 Fax (208) 387-0889
 office@grboise.com

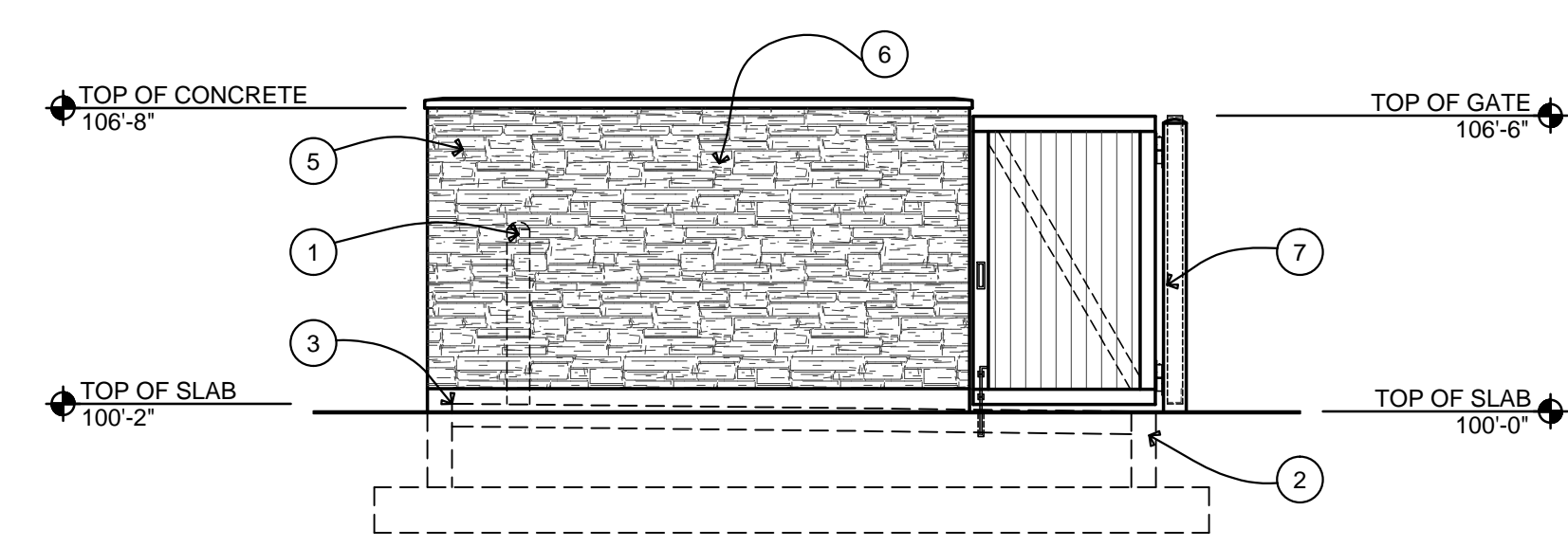
STATE OF COLORADO
 PETER HUGH ROCKWELL
 401889
 8-12-15
 LICENSED ARCHITECT

SHEET DATA
 DRAWN BY: DG
 CHECKED BY: PR
 SCALE: AS NOTED
 DATE: 3/11/15
 PROJECT #: 14001

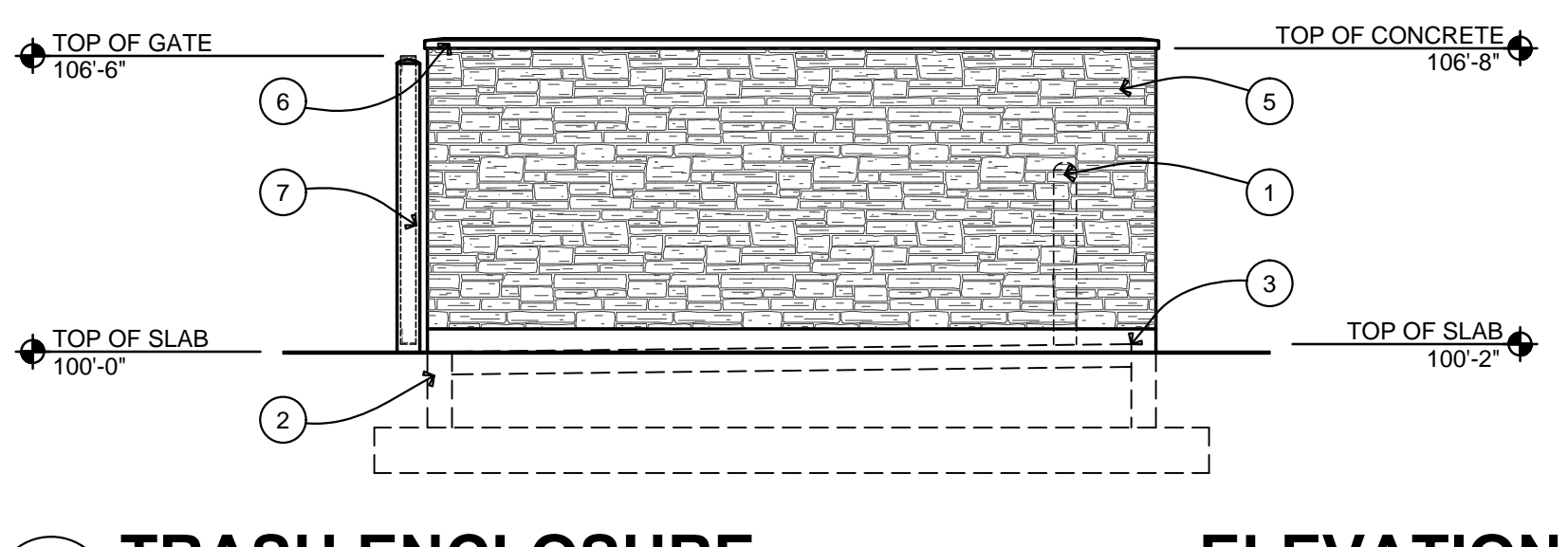
SHEET NUMBER
A0.1



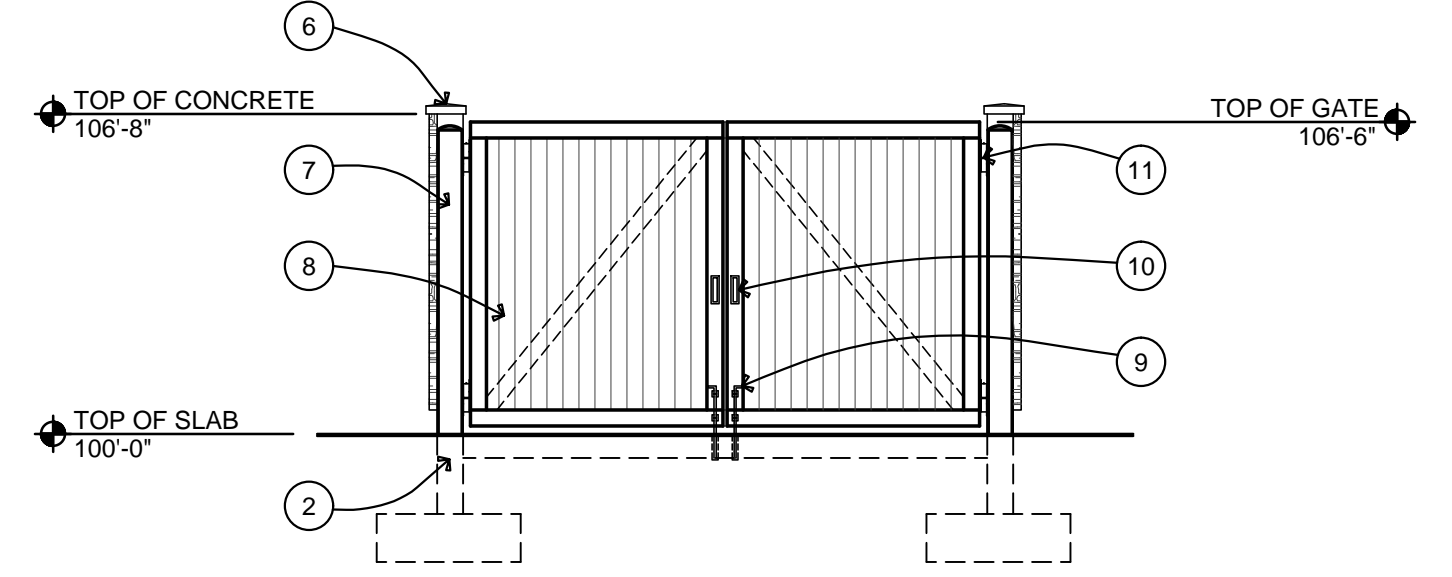
6 TRASH ENCLOSURE PLAN
SCALE 1/4" = 1'-0"



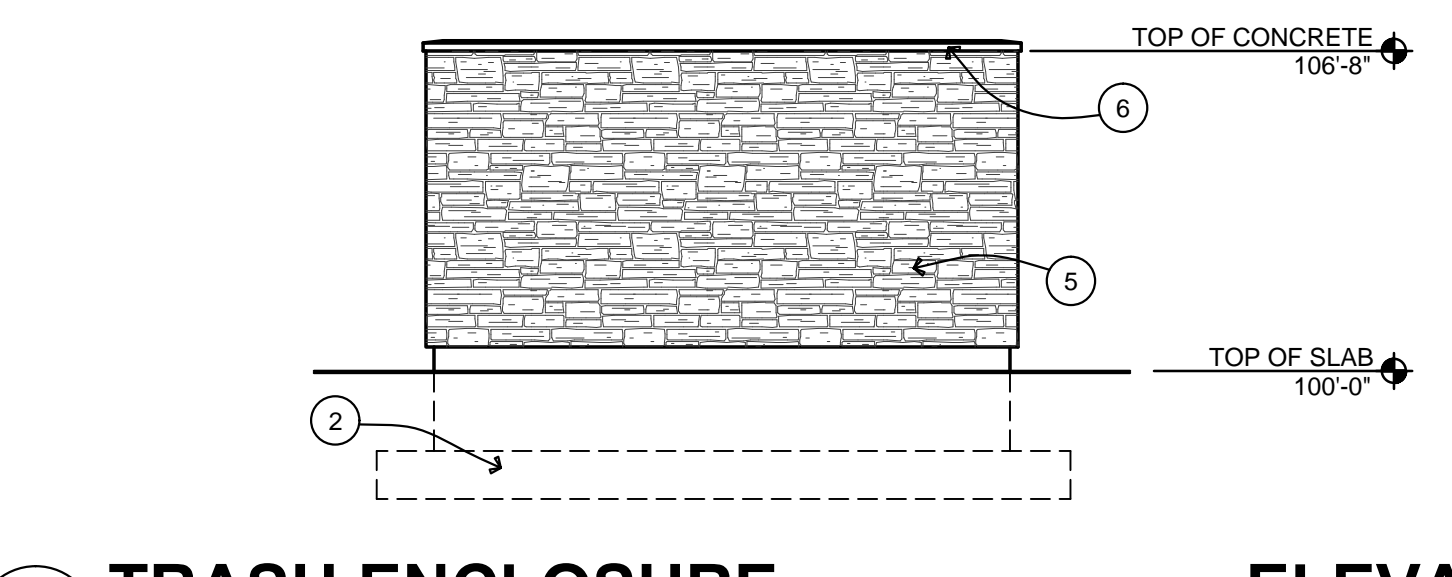
A TRASH ENCLOSURE ELEVATION
SCALE 1/4" = 1'-0"



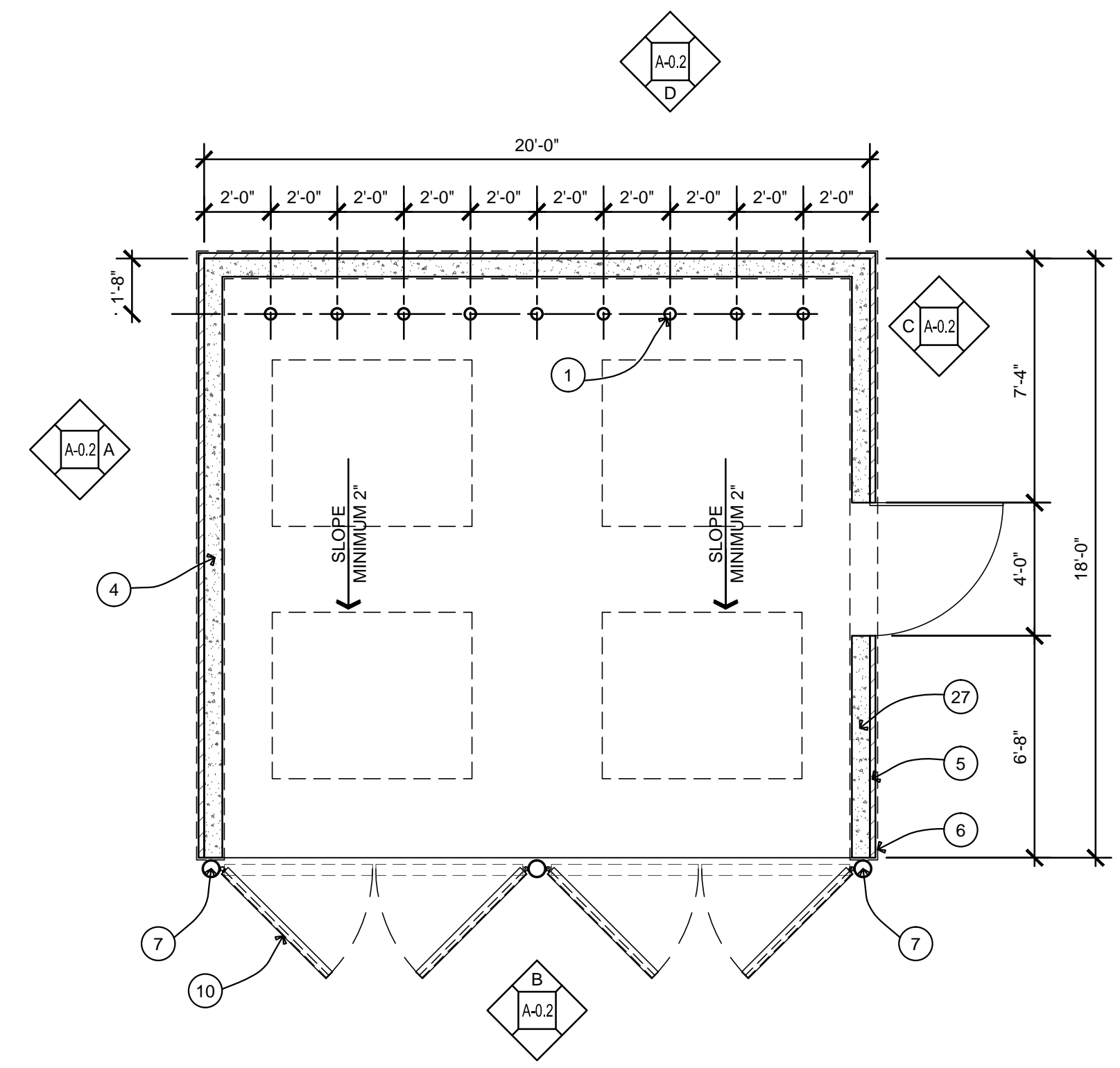
B TRASH ENCLOSURE ELEVATION
SCALE 1/4" = 1'-0"



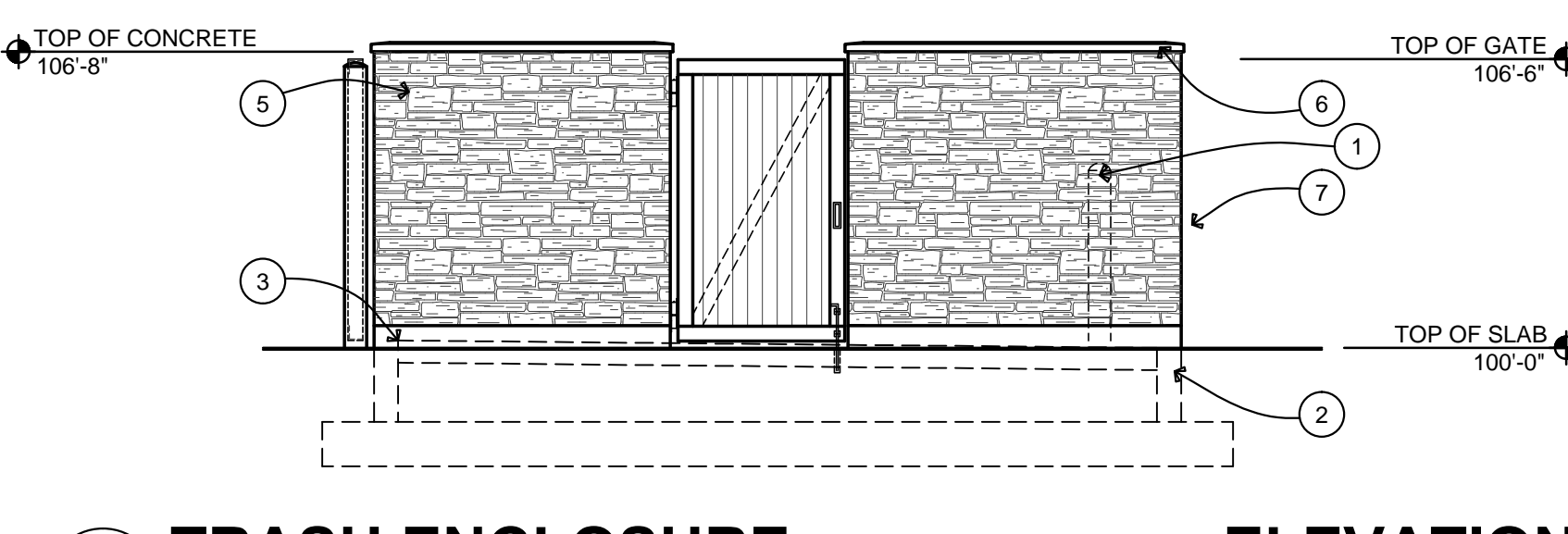
C TRASH ENCLOSURE ELEVATION
SCALE 1/4" = 1'-0"



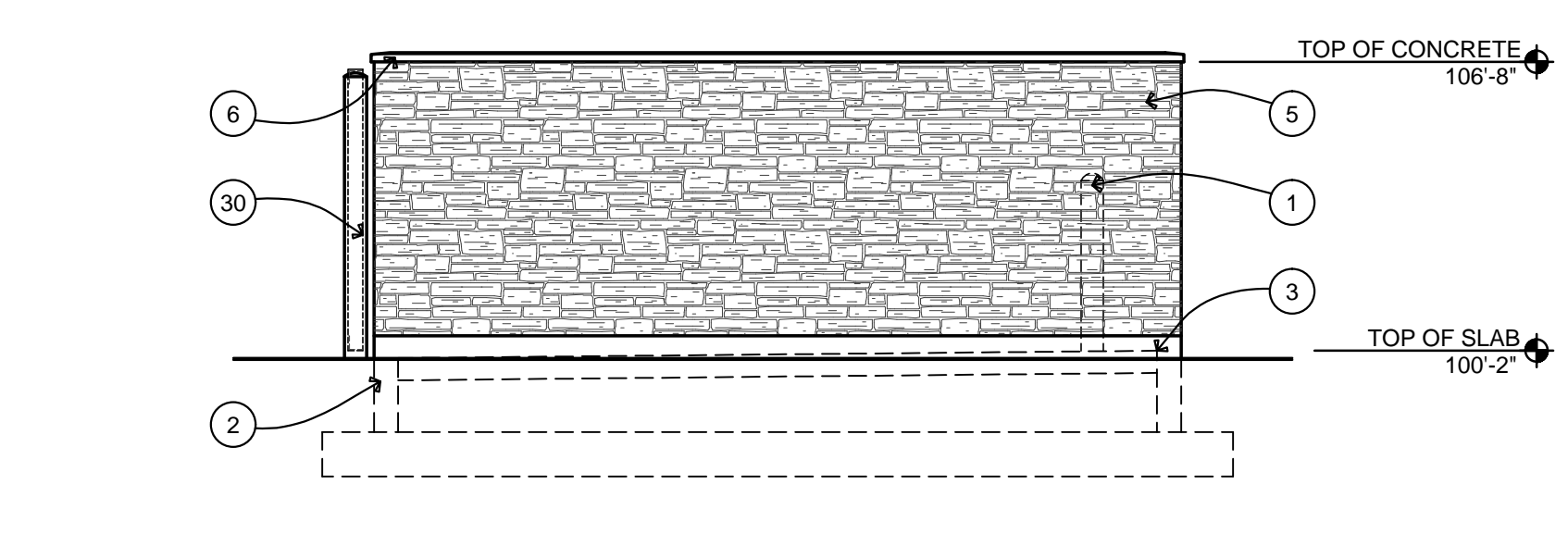
D TRASH ENCLOSURE ELEVATION
SCALE 1/4" = 1'-0"



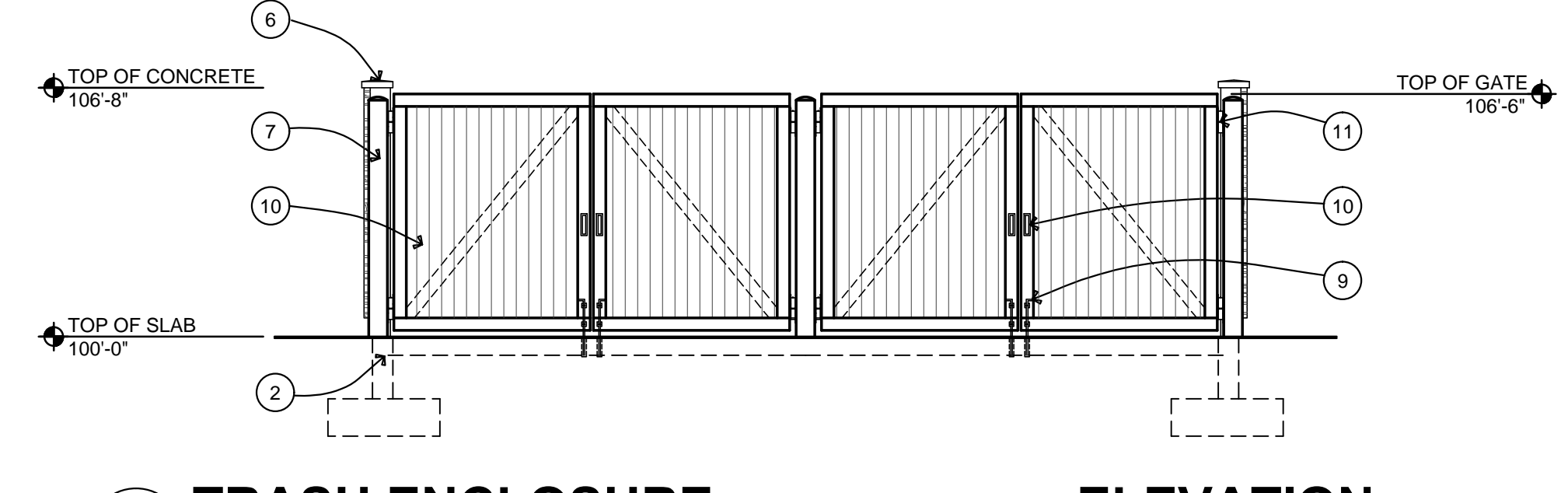
5 TRASH ENCLOSURE PLAN
SCALE 1/4" = 1'-0"



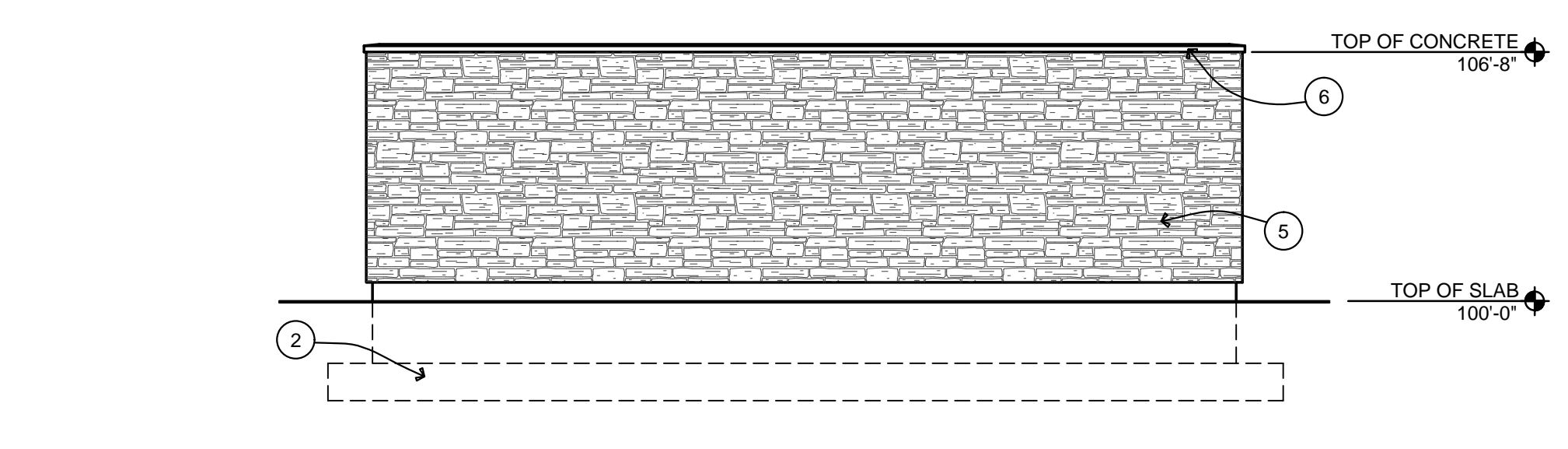
A TRASH ENCLOSURE ELEVATION
SCALE 1/4" = 1'-0"



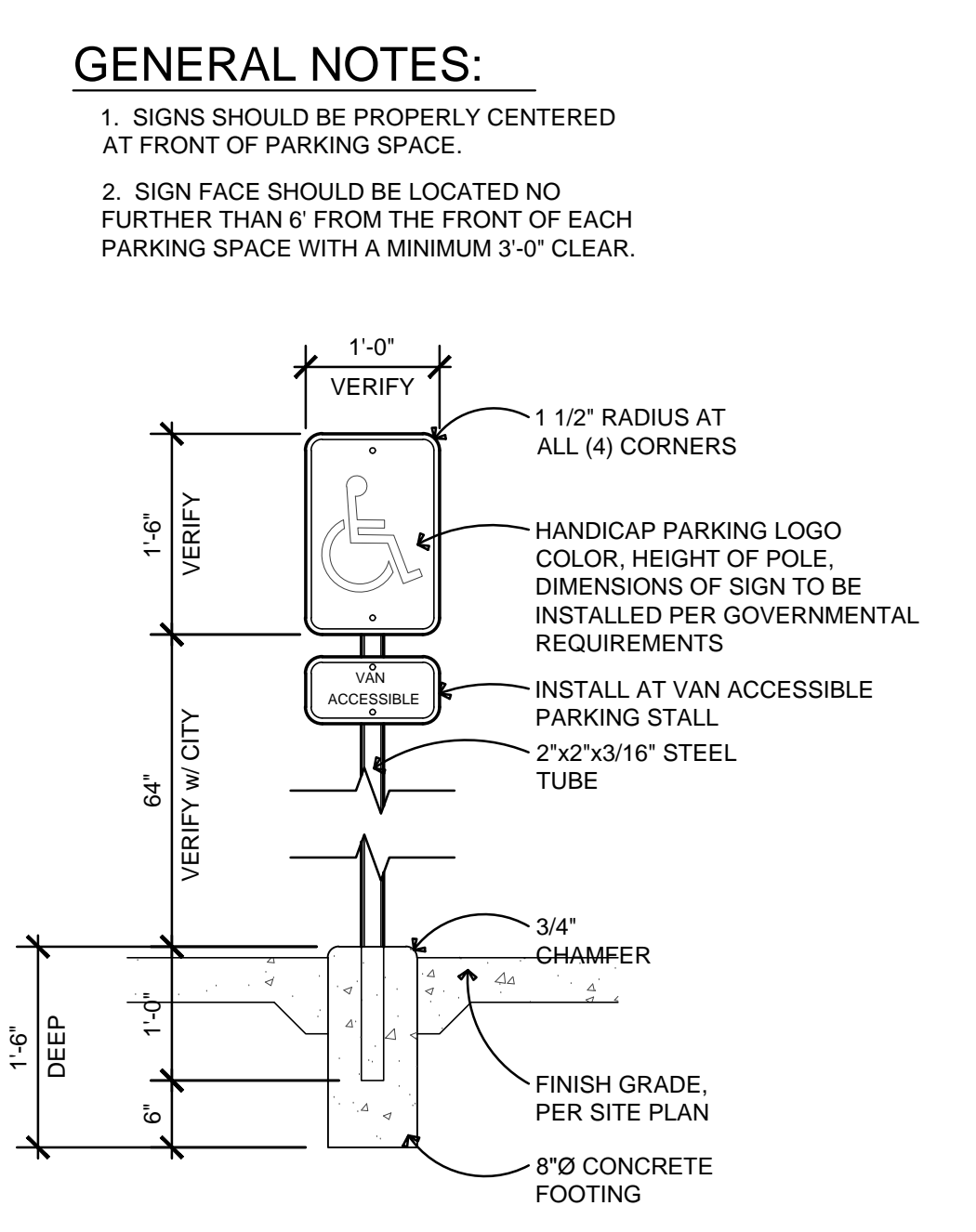
B TRASH ENCLOSURE ELEVATION
SCALE 1/4" = 1'-0"



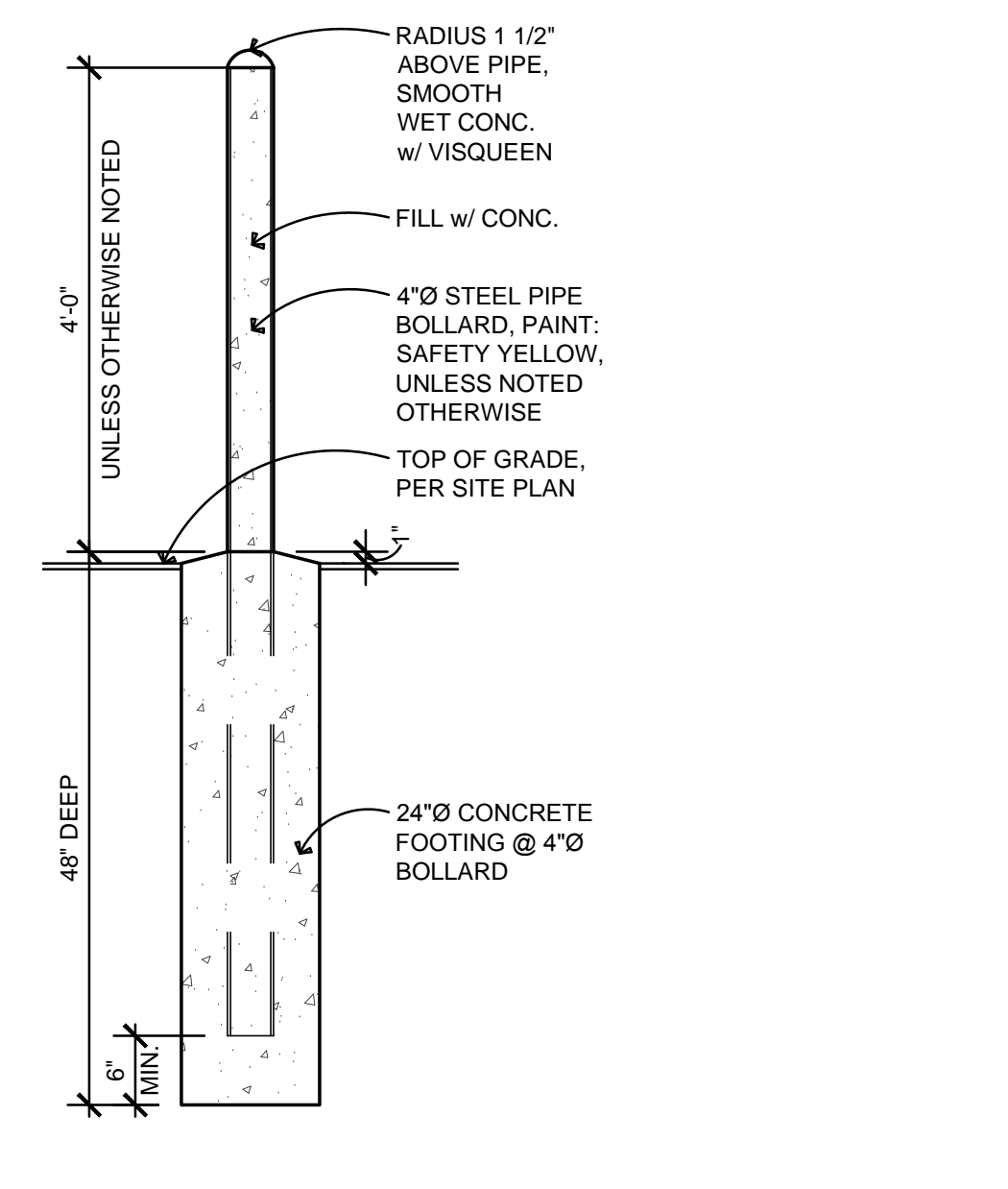
C TRASH ENCLOSURE ELEVATION
SCALE 1/4" = 1'-0"



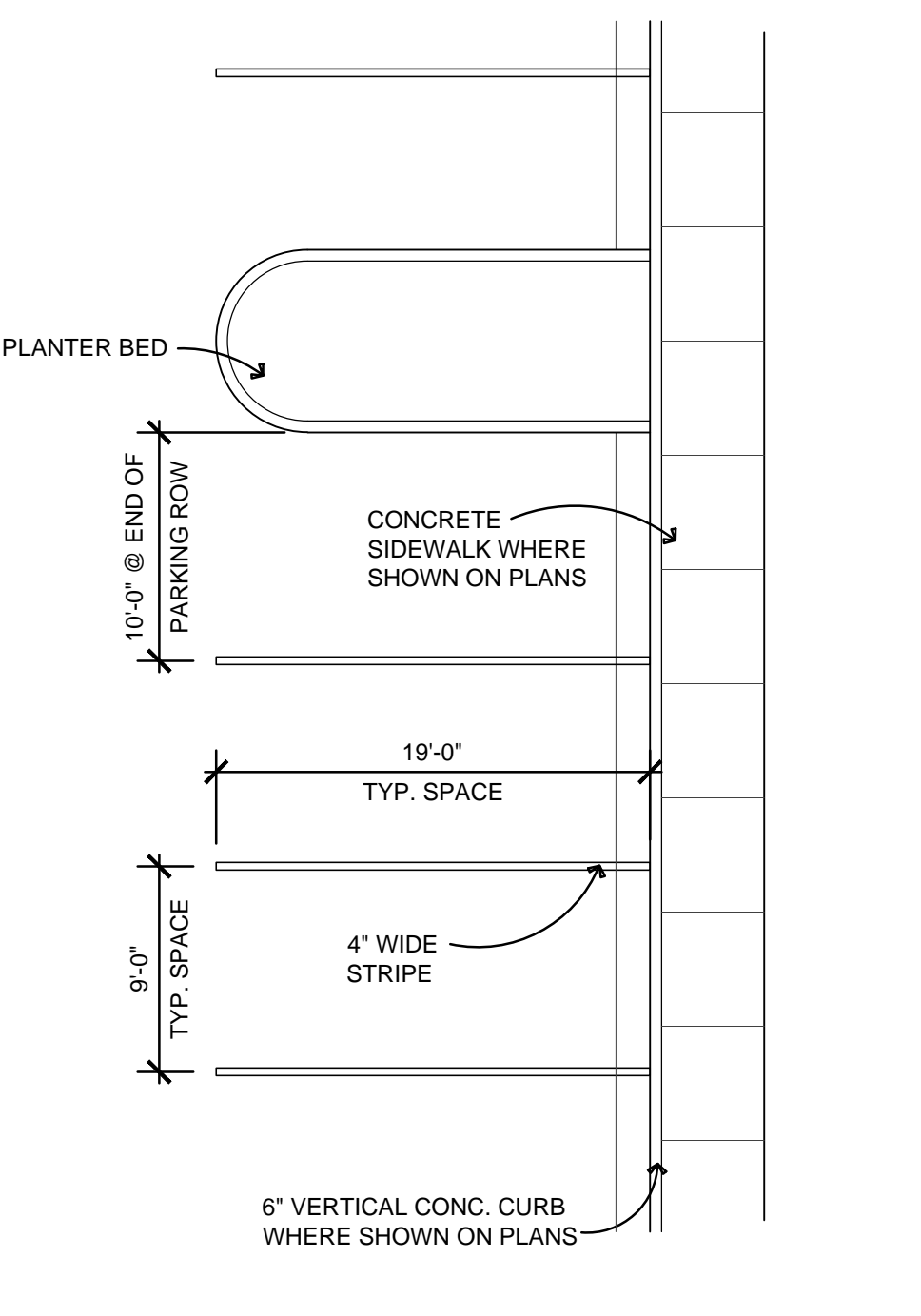
D TRASH ENCLOSURE ELEVATION
SCALE 1/4" = 1'-0"



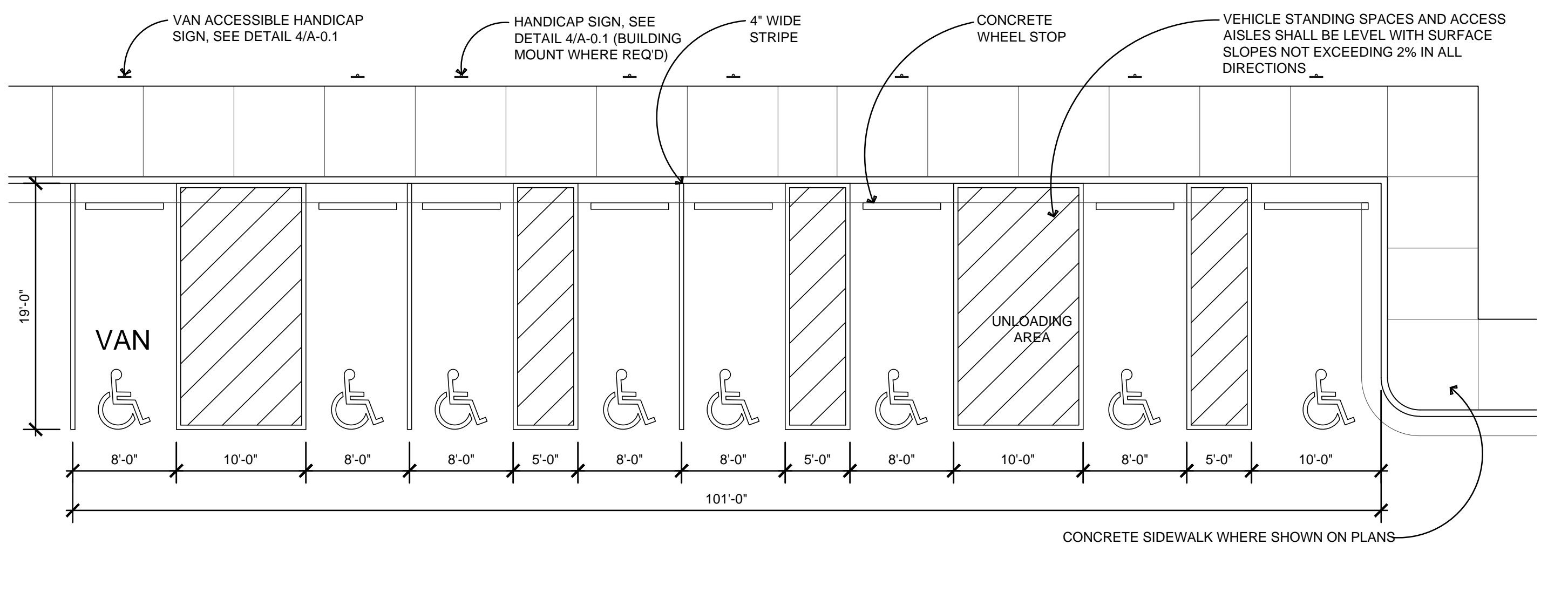
4 SIGNAGE DETAIL
SCALE 3/4" = 1'-0"



3 PIPE BOLLARD DETAIL
SCALE 3/4" = 1'-0"



2 PARKING STALL DETAIL
SCALE 1/8" = 1'-0"



1 PARKING STALL DETAIL
SCALE 1/8" = 1'-0"

- KEY NOTES**
- PIPE BOLLARD, SEE DETAIL 1/A-1.4
 - FOUNDATION SYSTEM, SEE STRUCTURAL
 - 6" CONCRETE SLAB w/WIREMESH REINFORCING (13x13-D5) OVER 6" COMPACTED GRAVEL BASE
 - CONCRETE TILT-UP DUMPSTER ENCLOSURE PANEL, SEE STRUCTURAL (SEE KEY NOTE #28 FOR FINISHES)
 - CULTURED STONE VENEER (APPLIED TO TRASH ENCLOSURE 'A' ONLY and TRASH ENCLOSURE 'B' WILL BE TEX-COTE COLOR #4)
 - PRECAST CONCRETE WALL CAP (ENCLOSURE 'A' ONLY)
 - 6" DIA GATE BOLLARD (FILL WITH CONCRETE), MOUNT GATE HINGE ASSEMBLY TO BOLLARD, PAINT: ISLE OF PINES (SHERMAN WILLIAMS)
 - L4"x4"x3/8" STEEL ANGLE FRAME (BRACE AS NEEDED) DUMPSTER GATE w/METAL 'B' DECKING, PAINT: ISLE OF PINES (SHERMAN WILLIAMS)
 - 24" CANE BOLT, PROVIDE A RECESSED PIPE MINIMUM 6" IN THE GROUND, PAINT: ISLE OF PINES (SHERMAN WILLIAMS)
 - (2) METAL DUMPSTER GATE HANDLES, PAINT: ISLE OF PINES (SHERMAN WILLIAMS)
 - 7" BARREL HINGE WITH GREASE FITTING, WELD TO GATE BOLLARD, PAINT: ISLE OF PINES (SHERMAN WILLIAMS)

REVISIONS	
DESCRIPTION	DATE
OWNER CHANGES	2/16/15
SITE SUBMITTAL	3/11/15

OWNER
SELECT DEVELOPMENT & CONTRACTING, LLC
660 EAST FRANKLIN ROAD, MERIDIAN, ID 83642

PROJECT
Brookside Farm Center
CROWN POINT DEVELOPMENT PARKER, CO

COPYRIGHT 2015

Peter H. Rockwell, Architect
Architecture • Planning
595 S Americana Boulevard Boise, Idaho 83702
(208) 345-0566 (208) 345-1718 Fax (208) 387-0889
office@grboise.com

STATE OF COLORADO
PETER HUGH ROCKWELL
401889
8-12-15
LICENSED ARCHITECT

SHEET DATA	
DRAWN BY:	DG
CHECKED BY:	PR
SCALE:	AS NOTED
DATE:	3/11/15
PROJECT #:	14001
SHEET NUMBER	

A0.2