

REVISIONS	DESCRIPTION	DATE
1	OWNER CHANGES	2/16/15
2	SITE SUBMITTAL	3/11/15
3	CITY COMMENTS	5/13/15

OWNER  
**SELECT DEVELOPMENT & CONTRACTING, LLC**  
 660 EAST FRANKLIN ROAD, MERIDIAN, ID 83642

PROJECT  
**Boardwalk Fun Center**  
 CROWN POINT DEVELOPMENT  
 PARKER, CO

COPYRIGHT  
 2015

Peter H. Rockwell, Architect  
 Architecture • Planning  
 595 S Americana Boulevard Boise, Idaho 83702  
 (208) 345-0566 (208) 345-1718 Fax (208) 387-0889  
 office@pgrboise.com

PRELIMINARY  
 NOT FOR CONSTRUCTION  
 5/13/15

SHEET DATA	
DRAWN BY:	DP
CHECKED BY:	KL
SCALE:	AS NOTED
DATE:	5/13/15
PROJECT #:	14100

SHEET NUMBER  
**E1.0**



**SITE LIGHTING POLE  
 DETAIL PL1A, PL1B, PL2A**  
 SCALE NONE

**SITE PHOTOMETRIC PLAN**  
 NORTH SCALE 1" = 40'-0"

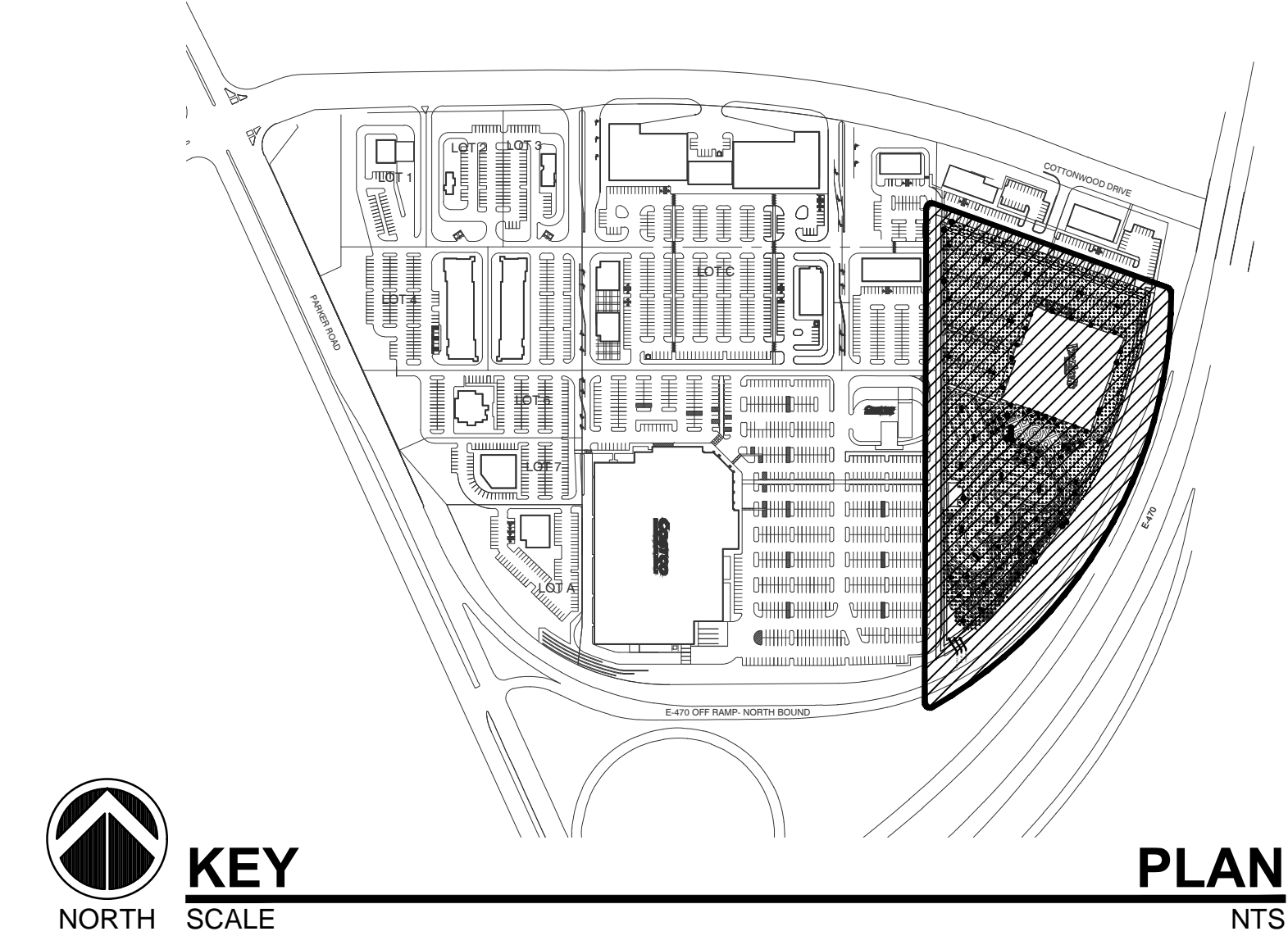
LIGHTING FIXTURE SCHEDULE-14100							
TYPE	DESCRIPTION	MOUNTING	LAMPS / LUMINAIRE	MANUFACTURER & CATALOG NUMBER	FIXTURE WATTAGE	OR EQUAL MANUFACTURER	NOTES
CN1	4' CANOPY LIGHT, LED ENCLOSED AND GASKETED CLEAR POLYCARBONATE LENS	CANOPY MOUNTED	LED 1800 LUMEN 4000K	LITHONIA NO. XWMLLED	24	LIGHTOLIER METALLUX COLUMBIA	1
PL1A	SITE POLE FIXTURE, (1) LED LUMINAIRE TYPE 3 DISTRIBUTION, DIMMABLE, 2 CIRCUIT WALL MOUNT, DARK BRONZE FINISH	WALL MOUNTED 27'-6" AFG	LED 31,000 LUMEN 4000K	McGRAW-EDISON NO. GLEON-AE-06-LED-E1-T3-BZ-2L-WM	315	SPAULDING LUMARK US ARCHITECTURAL	1,4
PL1B	SITE POLE FIXTURE, (1) LED LUMINAIRE TYPE 4 FT DISTRIBUTION, DIMMABLE, 2 CIRCUIT 25' POLE, DARK BRONZE FINISH	POLE MOUNTED 30" AFG BASE	LED 31,000 LUMEN 4000K	McGRAW-EDISON NO. GLEON-AE-06-LED-E1-14FT-BZ-2L POLE: SSS-5-A-25-S-F-N-1	315	SPAULDING LUMARK US ARCHITECTURAL	1
PL2A	SITE POLE FIXTURE, (2) LED LUMINAIRES AT 180 TYPE 4 FT DISTRIBUTION, DIMMABLE, 2 CIRCUIT 25' POLE, DARK BRONZE FINISH	POLE MOUNTED 30" AFG BASE	LED 31,000 LUMEN 4000K	McGRAW-EDISON NO. GLEON-AE-06-LED-E1-14FT-BZ-2L POLE: SSS-5-A-25-S-F-N-2	630	SPAULDING LUMARK US ARCHITECTURAL	1
PL2B	SITE POLE FIXTURE, (2) LED LUMINAIRES AT 180 TYPE 4 FT DISTRIBUTION, DIMMABLE 20' POLE, GFCI RECEPTACLE, DARK BRONZE FINISH	POLE MOUNTED FLUSH BASE	LED 21,000 LUMEN 4000K	McGRAW-EDISON NO. GLEON-AE-04-LED-E1-14FT-BZ POLE: SSS-5-A-20-S-F-N-2-E	426	SPAULDING LUMARK US ARCHITECTURAL	1
PL5A	GOLF POLE FIXTURE, (1) LED LUMINAIRE TYPE 3 DISTRIBUTION, DIMMABLE 12' POLE, GFCI RECEPTACLE, BRONZE FINISH	POLE MOUNTED FLUSH BASE	LED 8720 LUMEN 4000K	ANP LIGHTING NO. BVF1801-P078LD4-D-T3-40K-51 POLE: BD3STLS12-11GFWFP-CCS1301-51	78	SPAULDING LUMARK US ARCHITECTURAL	1
PL5B	GOLF POLE FIXTURE, (1) LED LUMINAIRE TYPE 5 DISTRIBUTION, DIMMABLE 12' POLE, GFCI RECEPTACLE, BRONZE FINISH	POLE MOUNTED FLUSH BASE	LED 8720 LUMEN 4000K	ANP LIGHTING NO. BVF1801-P078LD4-D-T5-40K POLE: BD3STLS12-11GFWFP-CCS1301-51	78	SPAULDING LUMARK US ARCHITECTURAL	1
WP1	EXTERIOR BUILDING MOUNTED FIXTURE, LED TYPE SR4 DISTRIBUTION, EMERGENCY BATTERY TEXTURED DARK BRONZE FINISH	WALL MOUNTED 9'-0" AFG	LED 3851 LUMENS 4000K	LITHONIA NO. WSR-LED-2-10A700/40K-SR4-MVOLT-DOBTD ELCW EMERGENCY BATTERY	47	SPAULDING LUMARK US ARCHITECTURAL	1,3,4

**LIGHTING FIXTURE SCHEDULE NOTES:**  
 1 SUBSTITUTIONS OF FIXTURES WILL BE ALLOWED AS PERMITTED BY DIVISION 1 SPECIFICATIONS, AND IF DEEMED EQUAL BY THE ENGINEER.  
 THE CONTRACTOR IS RESPONSIBLE FOR ENSURING SUBSTITUTED FIXTURES MEET OR EXCEED THE SPECIFICATIONS OF THE FIXTURES SPECIFIED, OR EQUAL MANUFACTURERS LIST INDICATED AS APPLICABLE TO MANUFACTURER EQUIVALENT FIXTURE OFFERINGS.  
 2 CONNECT FIXTURE TO BE DIMMING OR ON-OFF WHERE INDICATED ON DRAWINGS.  
 3 PROVIDE WITH EMERGENCY BACKUP BATTERY WHERE INDICATED ON DRAWINGS. INSTALL PILOT LIGHT AND TEST SWITCH (REMOTE IF REQUIRED).  
 4 SEE ARCHITECTURAL ELEVATIONS FOR LOCATION.

**SITE PHOTOMETRIC PLAN FIXTURE SCHEDULE**  
 SCALE NONE

STATISTICS					
Description	Symbol	Avg	Max	Min	Avg/Min
Attraction Area	+	2.9 fc	11.5 fc	0.3 fc	38.3:1
Parking Lot	+	2.6 fc	10.1 fc	0.4 fc	25.3:1

**SITE PHOTOMETRIC PLAN STATISTICS**  
 SCALE NONE



**KEY PLAN**  
 NORTH SCALE NTS