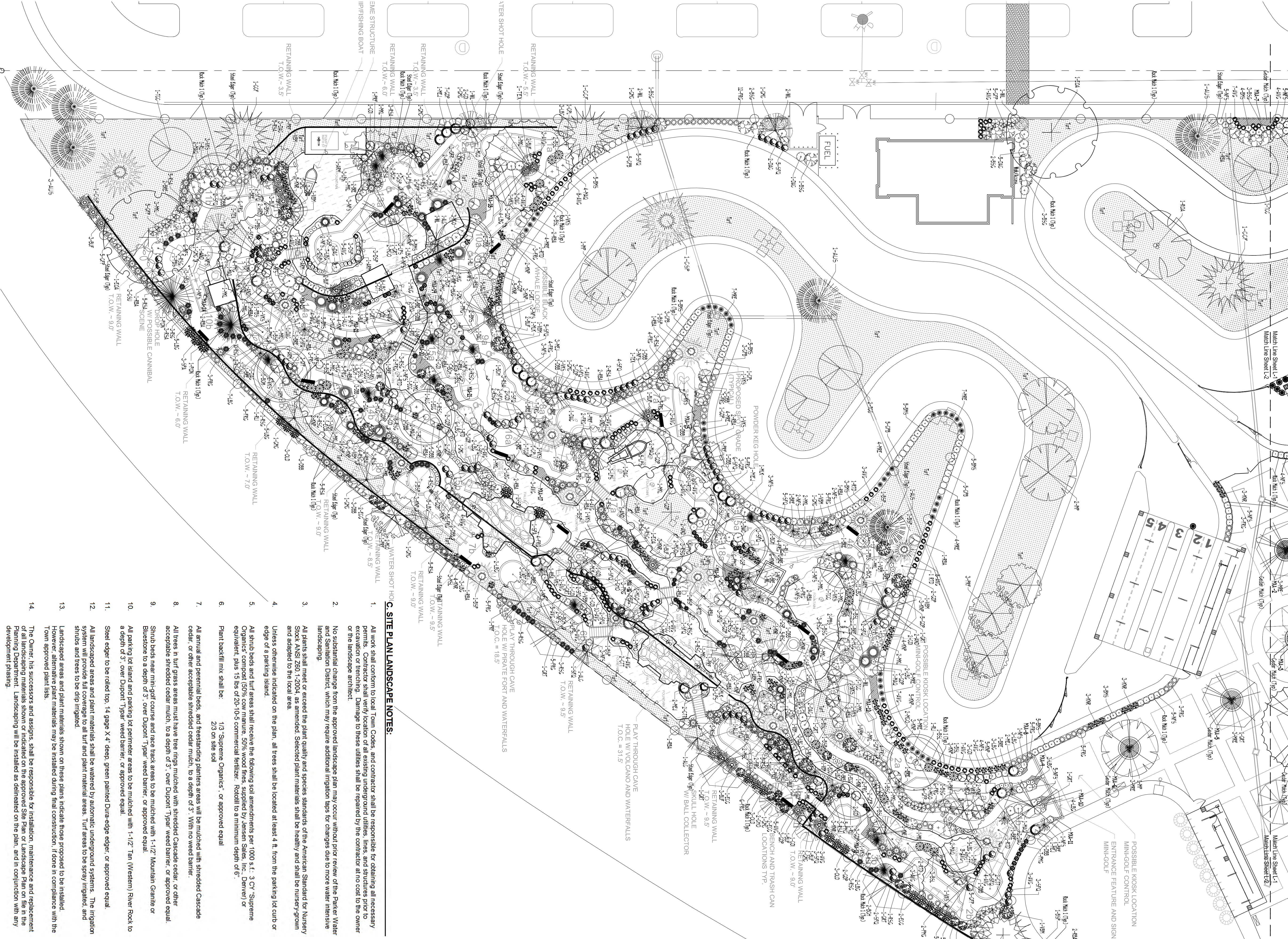
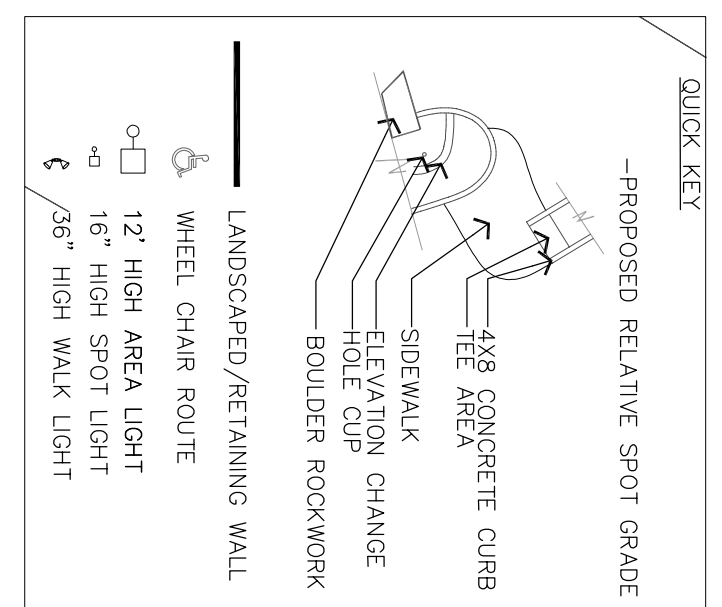
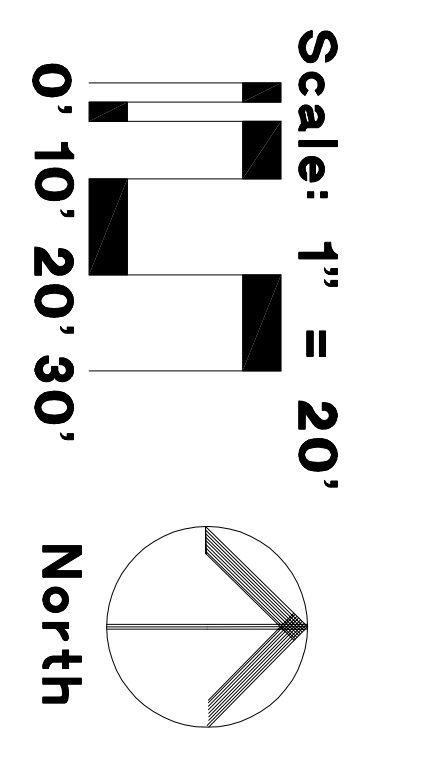


PLANT LEGEND

- CCF 6-8 White Fir 50'X20'-25'
- CSP 6 Colorado Spruce 60'X35'
- BSF 8 Bristle Spruce 30'X10'
- PN 6 Pinon Pine 25' X 15'
- AUS 6 Austrian Pine 50'X20'
- PN 6 Pinon Pine 40'X25'
- WBL 5-7 Cal. Redwood Juniper 10'X5'
- WBL 10 Cal. White Blue Juniper 20'X5'
- CSM 6 Crown Sycamore Maple 25' X 15'
- MP Imperial Locust 25' X 25'
- SFA Stake/master Honeylocust 50'X35'
- TEX Texas Red Oak 50' X 40'
- ROA Northern Red Oak 50'X30'
- EOL English Oak 50'X40'
- CNC Amur Maple G. Clump #15 50'X15'
- AJC Thicket Alder 20'X10'
- CCF Cedar/elm Tree 30'X25'
- REF Prairie Fire Crab 20'X20'
- TCC Thunderchild Crab 20'X20'
- B5L Scotin Leaf Bloom 3'X4'
- B5C Spanish Gold Bloom 4'X6'
- ECC Echinops Emerald Gaiety 3'X3'
- AMJ Amur Juniper 18'X6'
- AMN Amur Juniper 4'X4'
- BOH Blue Chip Juniper 12'X6'
- BOF Blue Chip Juniper 12'X6'
- HUG Huges Juniper 18'X6'
- OLD Old Gold Juniper 3'X4'
- CSP 5 Gal. Dove Spruce 3'X4'
- MSL G. Gal. Mountain Myrtle Pine 3'X4'
- MNO G. Gal. Nops Myrtle Pine 5'X6'
- MAG G. Gal. Oregon Grape Holly 6'X6'
- MCC G. Gal. Oregon Grape Holly 3'X4'-5'
- MSE Mopane Kopsen 15'X6'
- WIL Blue Rug Juniper 6'X6'
- OSP 5 Gal. Dove Spruce 2'X2'
- LFP Little Prince Pine Spruce 2'X3'
- SFC Fairy Queen Spruce 3'X3'
- MK Mink Elm 5'X5'
- CCP Common Purple Elm 15'X6'
- CSU Stagnon Cluster Spruce 6'X6'
- KYS Kearsage Viburnum 6' X 6'
- IBV Blue Vireo Viburnum 6'X6'
- DAC Dwarf American Cranberry 6'X4'
- NVF Nocturnal Pink Rose 3'X3'
- NRK Nocturnal Red Rose 3'X3'
- PPY Confederate Magna 14'-24'-30'-24'
- CCG Cal. Golden Bell 24'-30'-18'-30'-24'
- ELV Red Yucca 24'-30'-18'-30'-24'
- CCD Colorado Rudbeckia 30'X24'
- OSN Snow Noy Noy 18'X15'
- AVC Madras Grass 5'-6'-24'
- PMG Madras Grass Purple/Prime 3'-4'-15'-24'
- RSC Red Switch Grass 3'-4'-24'-30'
- LBC Little Bluestem 3'-4'-24'
- PCP Precast Concrete Planters
- WATER Features, Fountains + Pits
- WAL Wood Anemone/Perennials

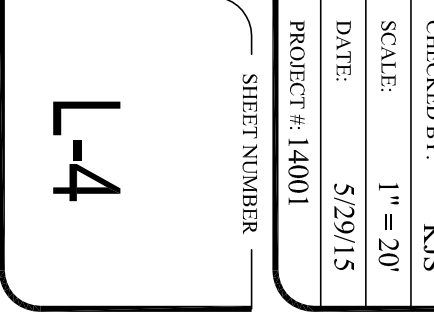


C SITE PLAN LANDSCAPE NOTES:

1. All work shall conform to local Town Codes and contractor shall be responsible for obtaining all necessary permits. Contractor shall verify location of existing underground utilities, man and structures prior to installation. All utility lines shall be marked with 1-1/2" diameter orange paint or spray paint. All structures shall be marked with 1-1/2" diameter red paint or spray paint. All structures shall be marked with 1-1/2" diameter red paint or spray paint.
2. No substantial change from the approved landscape plan may occur without prior review of the Parker Water and Sewerage District, which may require additional irrigation pipe, or changes due to water meter installation and associated trenching.
3. All plants shall be installed in accordance with the approved landscape plan. All plants shall be installed in accordance with the approved landscape plan.
4. All plants shall be installed in accordance with the approved landscape plan. All plants shall be installed in accordance with the approved landscape plan.
5. All plants shall be installed in accordance with the approved landscape plan. All plants shall be installed in accordance with the approved landscape plan.
6. All plants shall be installed in accordance with the approved landscape plan. All plants shall be installed in accordance with the approved landscape plan.
7. All plants shall be installed in accordance with the approved landscape plan. All plants shall be installed in accordance with the approved landscape plan.
8. All plants shall be installed in accordance with the approved landscape plan. All plants shall be installed in accordance with the approved landscape plan.
9. All plants shall be installed in accordance with the approved landscape plan. All plants shall be installed in accordance with the approved landscape plan.
10. All plants shall be installed in accordance with the approved landscape plan. All plants shall be installed in accordance with the approved landscape plan.
11. All plants shall be installed in accordance with the approved landscape plan. All plants shall be installed in accordance with the approved landscape plan.
12. All plants shall be installed in accordance with the approved landscape plan. All plants shall be installed in accordance with the approved landscape plan.
13. All plants shall be installed in accordance with the approved landscape plan. All plants shall be installed in accordance with the approved landscape plan.
14. The Owner, his successors and assigns, shall be responsible for installation, maintenance and replacement of all landscaping materials shown or indicated on the approved Site Plan or Landscape Plan on file in the Planning Department. Landscaping will be installed as delineated on the plan, and in conjunction with any development planning.

PLANT & MATERIALS SCHEDULE

QTY.	ITEM	COMMON NAME	SHAPE	TREES	SCIENTIFIC NAME	SIZE	COUNTY
4	IMP	Imperial Honeylocust			Gleditsia tinctoria var. trypoid	2" Cal	B88
22	SHL	Shadblow			Gibberis leucostachya	2" Cal	B88
8	RIJ	Redmond Juniper			Juniperus horizontalis	2" Cal	B88
7	CSM	Crown Sycamore			Quercus agrifolia	2" Cal	B88
4	EOA	English Oak			Quercus robur	2" Cal	B88
28	TEX	Texas Red Oak			Quercus buckleyi	2" Cal	B88
5	COF	Confederate Magnolia			Asimina speciosa	6" Ht	B88
7	AUS	Austrian Pine			Pinus edulis	6" Ht	B88
8	PN	Pinon Pine			Pinus edulis	6" Ht	B88
2	BSF	Bristle Spruce			Abies balsamea	6" Ht	B88
2	OSP	Oregon Spruce			Juniperus scopulorum	6" Ht	B88
15	MEJ	Medora Juniper			Juniperus chinensis	7" Cal	B88
7	WBL	White Blue Juniper			Juniperus scopulorum	7" Cal	B88
14	PRF	Prairie Fire Crab			Malva ssp. Prairiefire	1 1/2" Cal	B88
6	AJC	Amur Maple			Malva x Thunderschild	1 1/2" Cal	B88
12	TCC	Thunderchild Crab			Koeleria paniculata	1 1/2" Cal	B88
6	CMC	Crown Sycamore			Acacia ginnia	5-8 Clump	B88
84	CPE	Common Purple Elm			Berlinia nudiflora	15" Ht	B88
51	RBA	Red Bark Elm			Eurotia alata	18" Ht	B88
108	BBE	Blue Chip Juniper			Berberis thunbergii	18" Ht	B88
39	DAC	Dwarf American Cranberry			Vernonia tinctoria	18" Ht	B88
13	RTD	Red Twig Dogwood			Commersonia bartramia	24-30" Ht	B88
3	QPL	Queen Palm			Syringa wilsonii	5' Cal	B88
83	QPL	Queen Palm			Syringa wilsonii	5' Cal	B88
83	QPL	Queen Palm			Syringa wilsonii	5' Cal	B88
75	GFJ	Godoliner Potentilla			Potentilla fruticosa	5' Cal	B88
75	GFJ	Godoliner Potentilla			Potentilla fruticosa	5' Cal	B88
6	RRS	Russian Sage			Perovskia atriplicifolia	5' Cal	B88
9	SFC	Fairy Queen Spruce			Juniperus horizontalis	5' Cal	B88
97	SFC	Fairy Queen Spruce			Juniperus horizontalis	5' Cal	B88
114	NFS	Navy Blue Juniper			Juniperus horizontalis	5' Cal	B88
26	LVS	Blue Chip Juniper			Juniperus horizontalis	5' Cal	B88
23	VKS	Kearsage Viburnum			Viburnum celticum	5' Cal	B88
61	KNP	Knox Pink Rose			Rosa rugosa	5' Cal	B88
7	RSK	Rose of Sharon			Rosa rugosa	5' Cal	B88
25	BSL	Bloom Spirea			Osageodora latifolia	5' Cal	B88
11	QNT	Queen Palm			Osageodora latifolia	5' Cal	B88
11	QNT	Queen Palm			Osageodora latifolia	5' Cal	B88
4	CCG	Cal. Golden Bell			Osageodora latifolia	5' Cal	B88
16	CCG	Cal. Golden Bell			Osageodora latifolia	5' Cal	B88
16	CCG	Cal. Golden Bell			Osageodora latifolia	5' Cal	B88
12	MCO	Madras Grass			Osageodora latifolia	5' Cal	B88
17	MCO	Madras Grass			Osageodora latifolia	5' Cal	B88
17	MCO	Madras Grass			Osageodora latifolia	5' Cal	B88
9	AND	Andromeda			Osageodora latifolia	5' Cal	B88
16	AMJ	Amur Juniper			Osageodora latifolia	5' Cal	B88
16	AMJ	Amur Juniper			Osageodora latifolia	5' Cal	B88
16	AMJ	Amur Juniper			Osageodora latifolia	5' Cal	B88
52	HIG	Huges Juniper			Osageodora latifolia	5' Cal	B88
52	HIG	Huges Juniper			Osageodora latifolia	5' Cal	B88
3	SEA	Sea Green Juniper			Osageodora latifolia	5' Cal	B88
18	OLD	Old Gold Juniper			Osageodora latifolia	5' Cal	B88
20	MNO	Mountain Myrtle			Osageodora latifolia	5' Cal	B88
7	NAL	Navy Blue Juniper			Osageodora latifolia	5' Cal	B88
192	AVG	Madras Grass			Osageodora latifolia	5' Cal	B88
217	FRG	Fairy Queen Spruce			Osageodora latifolia	5' Cal	B88
118	LEB	Little Prince Pine			Osageodora latifolia	5' Cal	B88
87	RCG	Red Switch Grass			Osageodora latifolia	5' Cal	B88
3	COM	Confederate Magnolia			Osageodora latifolia	5' Cal	B88
8	GMI	Gal. Mountain Myrtle			Osageodora latifolia	5' Cal	B88
5	ELA	English Lavender			Osageodora latifolia	5' Cal	B88
5	FEV	Fairy Queen Spruce			Osageodora latifolia	5' Cal	B88
8	RCD	Rudbeckia			Osageodora latifolia	5' Cal	B88
6	SMN	Snow Noy Noy			Osageodora latifolia	5' Cal	B88
6	SMN	Snow Noy Noy			Osageodora latifolia	5' Cal	B88
750	IXA	Madras Grass			Osageodora latifolia	5' Cal	B88



Scale: 1" = 20'
0' 10' 20' 30'
North

BLDG KEY
-IMPROVED RELATIVE SPOT GRADE
CONCRETE CURB
SIDEWALK
HELIX CURB CHANGE
BOLLARD ROCKWORK
LANDSCAPED/RETAINING WALL
WHEEL CHAIR ROUTE
12" HIGH AREA LIGHT
18" HIGH SPOT LIGHT
6" / 8" HIGH WALK LIGHT

C SITE PLAN LANDSCAPE NOTES:
1. All work shall conform to local Town Codes and contractor shall be responsible for obtaining all necessary permits. Contractor shall verify location of existing underground utilities, man and structures prior to installation. All utility lines shall be marked with 1-1/2" diameter orange paint or spray paint. All structures shall be marked with 1-1/2" diameter red paint or spray paint. All structures shall be marked with 1-1/2" diameter red paint or spray paint.
2. No substantial change from the approved landscape plan may occur without prior review of the Parker Water and Sewerage District, which may require additional irrigation pipe, or changes due to water meter installation and associated trenching.
3. All plants shall be installed in accordance with the approved landscape plan. All plants shall be installed in accordance with the approved landscape plan.
4. All plants shall be installed in accordance with the approved landscape plan. All plants shall be installed in accordance with the approved landscape plan.
5. All plants shall be installed in accordance with the approved landscape plan. All plants shall be installed in accordance with the approved landscape plan.
6. All plants shall be installed in accordance with the approved landscape plan. All plants shall be installed in accordance with the approved landscape plan.
7. All plants shall be installed in accordance with the approved landscape plan. All plants shall be installed in accordance with the approved landscape plan.
8. All plants shall be installed in accordance with the approved landscape plan. All plants shall be installed in accordance with the approved landscape plan.
9. All plants shall be installed in accordance with the approved landscape plan. All plants shall be installed in accordance with the approved landscape plan.
10. All plants shall be installed in accordance with the approved landscape plan. All plants shall be installed in accordance with the approved landscape plan.
11. All plants shall be installed in accordance with the approved landscape plan. All plants shall be installed in accordance with the approved landscape plan.
12. All plants shall be installed in accordance with the approved landscape plan. All plants shall be installed in accordance with the approved landscape plan.
13. All plants shall be installed in accordance with the approved landscape plan. All plants shall be installed in accordance with the approved landscape plan.
14. The Owner, his successors and assigns, shall be responsible for installation, maintenance and replacement of all landscaping materials shown or indicated on the approved Site Plan or Landscape Plan on file in the Planning Department. Landscaping will be installed as delineated on the plan, and in conjunction with any development planning.

PLANT & MATERIALS SCHEDULE

QTY.	ITEM	COMMON NAME	SHAPE	TREES	SCIENTIFIC NAME	SIZE	COUNTY
4	IMP	Imperial Honeylocust			Gleditsia tinctoria var. trypoid	2" Cal	B88
22	SHL	Shadblow			Gibberis leucostachya	2" Cal	B88
8	RIJ	Redmond Juniper			Juniperus horizontalis	2" Cal	B88
7	CSM	Crown Sycamore			Quercus agrifolia	2" Cal	B88
4	EOA	English Oak			Quercus robur	2" Cal	B88
28	TEX	Texas Red Oak			Quercus buckleyi	2" Cal	B88
5	COF	Confederate Magnolia			Asimina speciosa	6" Ht	B88
7	AUS	Austrian Pine			Pinus edulis	6" Ht	B88
8	PN	Pinon Pine			Pinus edulis	6" Ht	B88
2	BSF	Bristle Spruce			Abies balsamea	6" Ht	B88
2	OSP	Oregon Spruce			Juniperus scopulorum	6" Ht	B88
15	MEJ	Medora Juniper			Juniperus chinensis	7" Cal	B88
7	WBL	White Blue Juniper			Juniperus scopulorum	7" Cal	B88
14	PRF	Prairie Fire Crab			Malva ssp. Prairiefire	1 1/2" Cal	B88
6	AJC	Amur Maple			Malva x Thunderschild	1 1/2" Cal	B88
12	TCC	Thunderchild Crab			Koeleria paniculata	1 1/2" Cal	B88
6	CMC	Crown Sycamore			Acacia ginnia	5-8 Clump	B88
84	CPE	Common Purple Elm			Berlinia nudiflora	15" Ht	B88
51	RBA	Red Bark Elm			Eurotia alata	18" Ht	B88
108	BBE	Blue Chip Juniper			Berberis thunbergii	18" Ht	B88
39	DAC	Dwarf American Cranberry			Vernonia tinctoria	18" Ht	B88
13	RTD	Red Twig Dogwood			Commersonia bartramia	24-30" Ht	B88
3	QPL	Queen Palm			Syringa wilsonii	5' Cal	B88
83	QPL	Queen Palm			Syringa wilsonii	5' Cal	B88
83	QPL	Queen Palm			Syringa wilsonii	5' Cal	B88
75	GFJ	Godoliner Potentilla			Potentilla fruticosa	5' Cal	B88
75	GFJ	Godoliner Potentilla			Potentilla fruticosa	5' Cal	B88
6	RRS	Russian Sage			Perovskia atriplicifolia	5' Cal	B88
9	SFC	Fairy Queen Spruce			Juniperus horizontalis	5' Cal	B88
97	SFC	Fairy Queen Spruce			Juniperus horizontalis	5' Cal	B88
114	NFS	Navy Blue Juniper			Juniperus horizontalis	5' Cal	B88
26	LVS	Blue Chip Juniper			Juniperus horizontalis	5' Cal	B88
23	VKS	Kearsage Viburnum			Viburnum celticum	5' Cal	B88
61	KNP	Knox Pink Rose			Rosa rugosa	5' Cal	B88
7	RSK	Rose of Sharon			Rosa rugosa	5' Cal	B88
25	BSL	Bloom Spirea			Osageodora latifolia	5' Cal	B88
11	QNT	Queen Palm			Osageodora latifolia	5' Cal	B88
11	QNT	Queen Palm			Osageodora latifolia	5' Cal	B88
4	CCG	Cal. Golden Bell			Osageodora latifolia	5' Cal	B88
16	CCG	Cal. Golden Bell			Osageodora latifolia	5' Cal	B88
16	CCG	Cal. Golden Bell			Osageodora latifolia	5' Cal	B88
12	MCO	Madras Grass			Osageodora latifolia	5' Cal	B88
17	MCO	Madras Grass			Osageodora latifolia	5' Cal	B88
17	MCO	Madras Grass			Osageodora latifolia	5' Cal	B88
9	AND	Andromeda			Osageodora latifolia	5' Cal	B88
16	AMJ	Amur Juniper			Osageodora latifolia	5' Cal	B88
16	AMJ	Amur Juniper			Osageodora latifolia	5' Cal	B88
16	AMJ	Amur Juniper			Osageodora latifolia	5' Cal	B88
52	HIG	Huges Juniper			Osageodora latifolia	5' Cal	B88
52	HIG	Huges Juniper			Osageodora latifolia	5' Cal	B88
3	SEA	Sea Green Juniper			Osageodora latifolia	5' Cal	B88
18	OLD	Old Gold Juniper			Osageodora latifolia	5' Cal	B88
20	MNO	Mountain Myrtle			Osageodora latifolia	5' Cal	B88
7	NAL	Navy Blue Juniper			Osageodora latifolia	5' Cal	B88
192	AVG	Madras Grass			Osageodora latifolia	5' Cal	B88
217	FRG	Fairy Queen Spruce			Osageodora latifolia	5' Cal	B88
118	LEB	Little Prince Pine			Osageodora latifolia	5' Cal	B88
87	RCG	Red Switch Grass			Osageodora latifolia	5' Cal	B88
3							

Boondocks Site Calculations

		Crown Point Center	
Parker, CO			
Parking	126,496.00 sf	2.90 acre(s)	32.1% of total site
Landscape Islands	12,674.00 sf	10% of parking lot	
Total Parking Area	126,496.00 sf	2.90 acre(s)	32.1% of total site
'Green' Space	77,467.00 sf	1.78 acre(s)	19.7% of total site
Landscape w/o Parking Islands	64,793.00 sf	1.49 acre(s)	16.5% of total site
Hardscape	27,571.00 sf	0.63 acre(s)	7.0% of total site
Entry Plaza	3,987.00 sf		
Rear Patio	23,584.00 sf		
Total Landscape Area	105,038.00 sf	2.41 acre(s)	26.7% of total site
Main Building	60,480.00 sf	1.39 acre(s)	15.4% of total site
Maintenance Building	1,950.00 sf		
Pump House	248.00 sf		
Total Building Area	62,678.00 sf	1.44 acre(s)	15.9% of total site
Attractions	65,142.00 sf	1.50 acre(s)	16.5% of total site
Bumper Boats Pond	8,671.00 sf		
Go Cart Tracks	56,471.00 sf	1.30 acre(s)	14.3% of total site
Back of House circulation	34,340.00 sf	0.79 acre(s)	8.7% of total site
Total Attraction Area	99,482.00 sf	2.28 acre(s)	25.3% of total site
Total Site	393,695.60 sf		9.04 acre(s)

Plant Material Areas (Entire Site)

Site Area Description	Size/Sq. Ft.
Turf Areas - Reveille Texas hybrid blgrass (Irrigated)	27,131 sq. Ft.
Planting Areas (Irrigated)	31,980 Sq. Ft.
Total Landscape Area	59,111 Sq. Ft.

Area/Sq. Ft.	Trees			Notes
	Deciduous/Ornamental	Evergreen	Shrubs	
12,674 Sq. Ft.	48	1	268	99

Overall Site Landscape Area Summary (Excluding Parking Lot Islands)

Area/Sq. Ft.	Trees			Notes
	Deciduous/Ornamental	Evergreen	Shrubs	
64,793 Sq. Ft.	93	76	1232	636

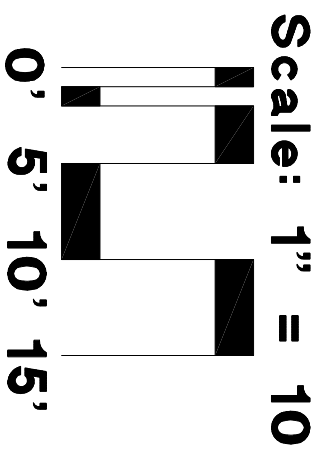
Evergreen Trees = 45%
Deciduous Trees = 55%

Grand Total Overall Site Area Summary (Not Covered By Bldg. & Req. Pkg.)

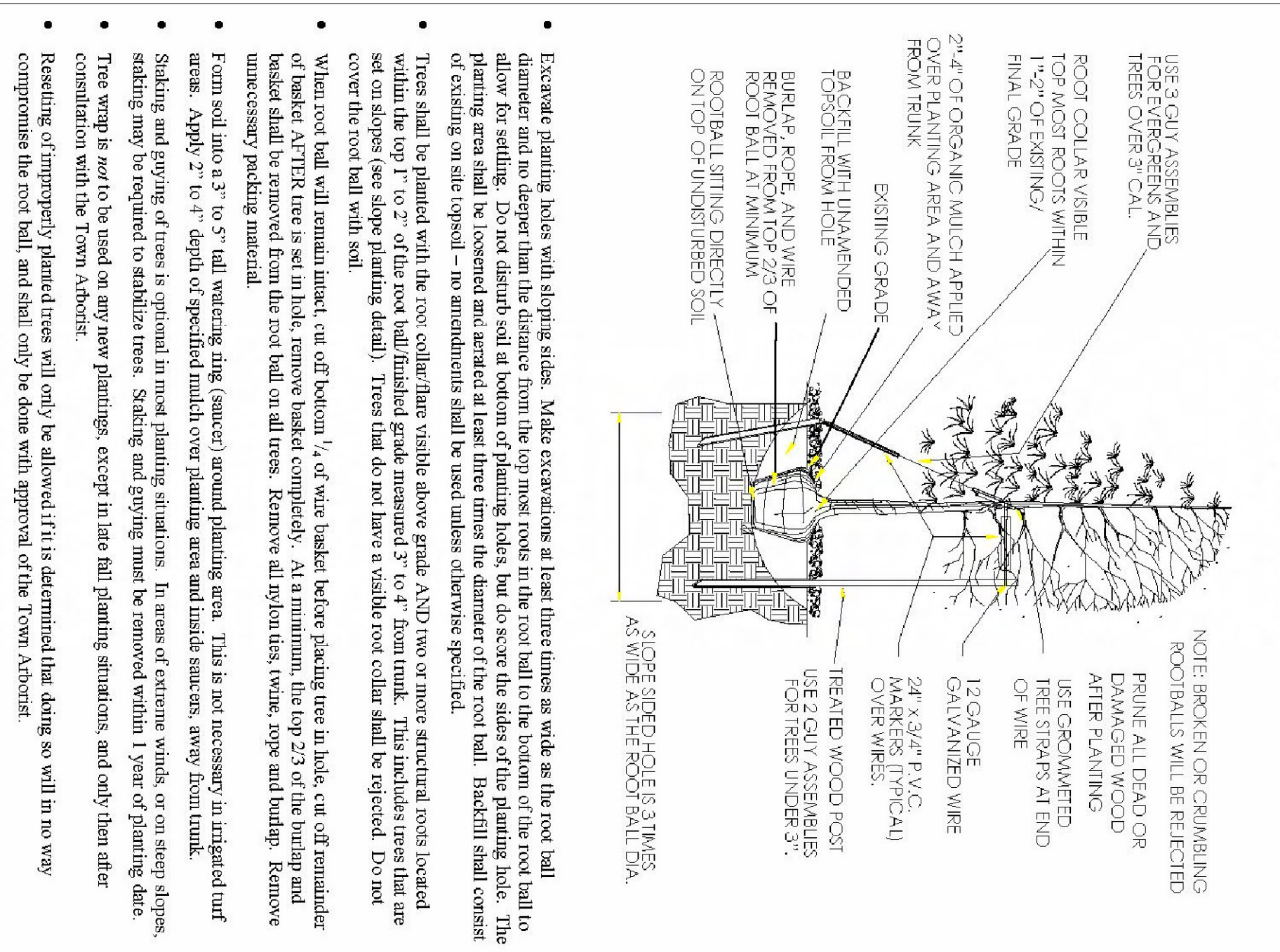
Area/Sq. Ft.	Trees			Notes
	Deciduous/Ornamental	Evergreen	Shrubs	
204,520 Sq. Ft.	141	77	1500	735

At 1 Tree & 5 Shrubs/1500 sf
= 136 Trees & 681 Shrubs Required
Evergreen Trees = 35%

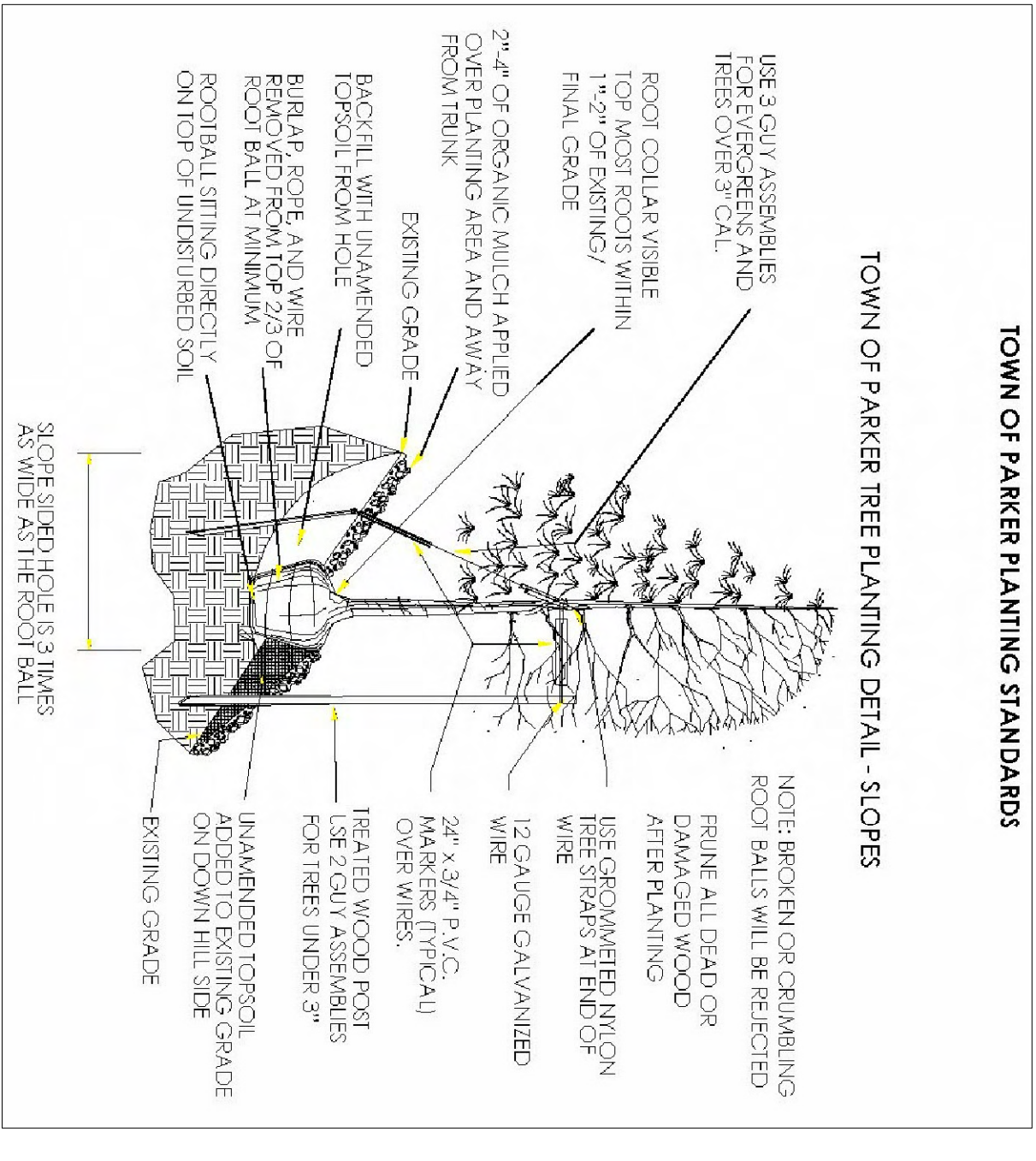
Landscape Area	Native Grass and Spray Shrubs & Perennials (10,000sf = 1 SFT)		Drip Irrigated area (20,000sf = 1 SFT)		Sub-Total of PWS one divided by 6000 = Non-irrigated area (calculated) Areas SFT per 6000	SFT Requirement (Sub-Total calculated by 6000 = 27 Tan Required)
	High Water	Low Water	High Water	Low Water		
Area #1	27,131 sf x 1 = 27,131	2086 sf x 6 = 1252	23,614 sf x 3 = 7084	6280 sf x 0 = 0	35,467 sf	6,000



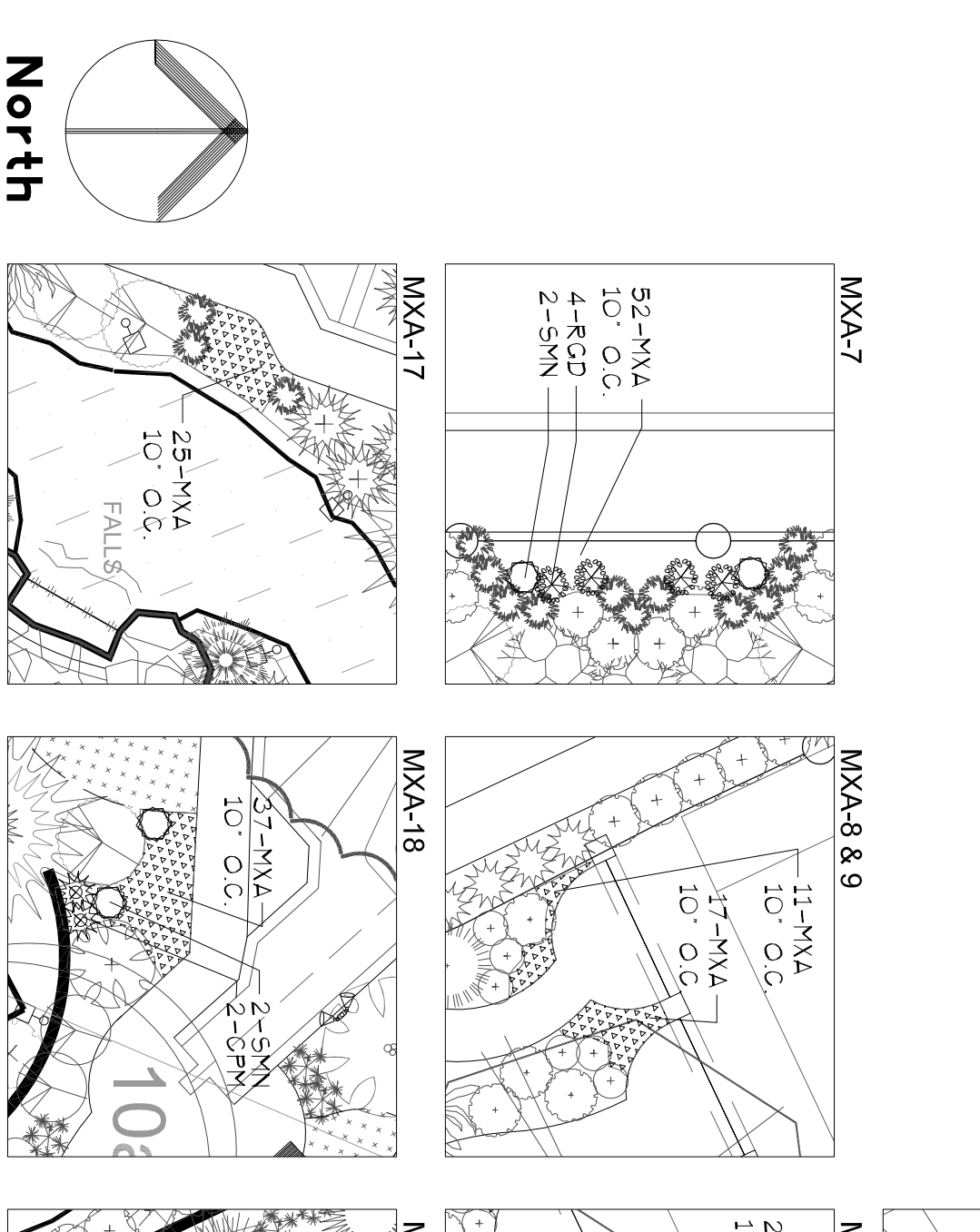
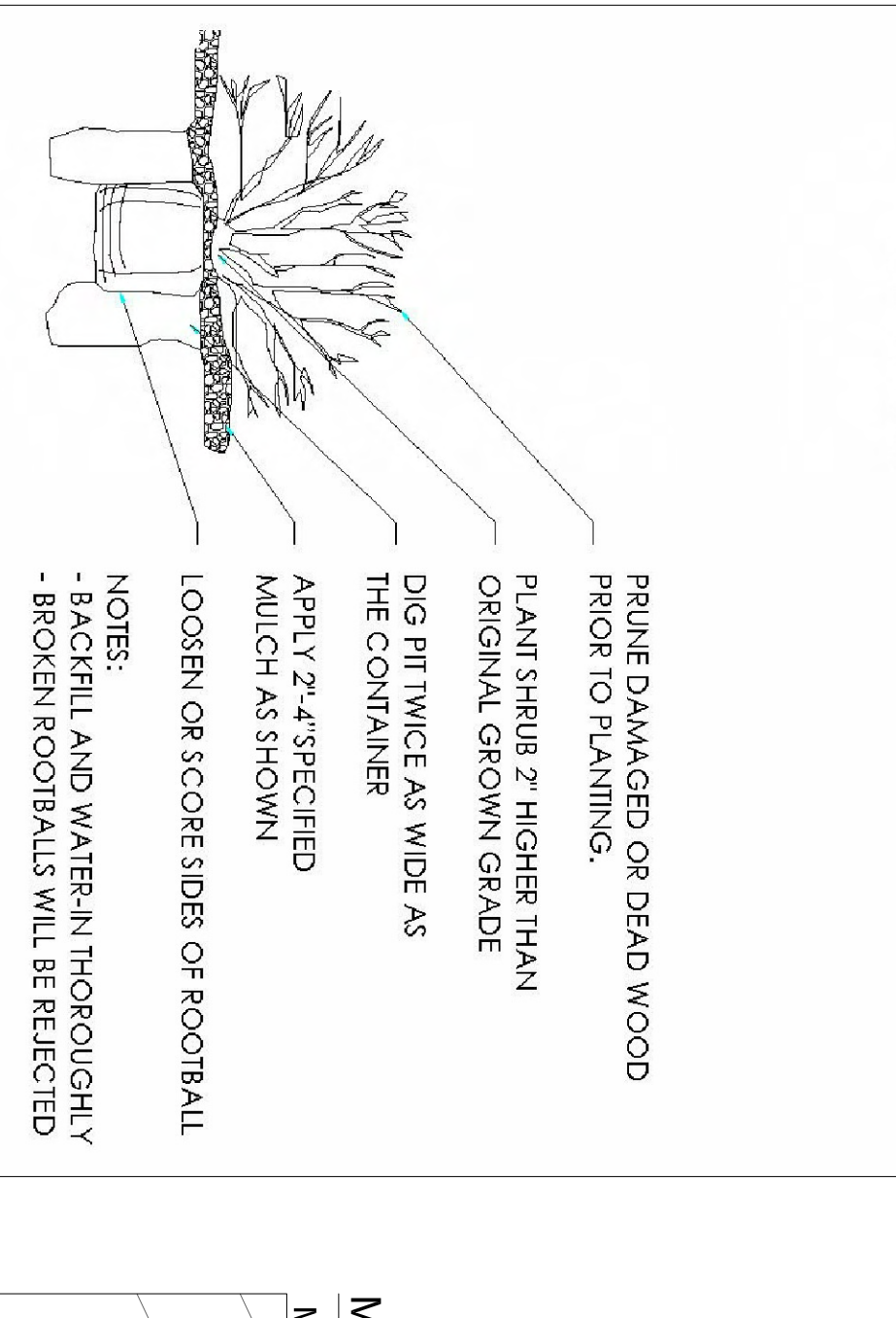
TOWN OF PARKER PLANNING STANDARDS



TOWN OF PARKER PLANNING STANDARDS



TOWN OF PARKER PLANNING DETAIL - SHRUBS



MADE IN WAUSAU. Wausau Tile

Metal & Concrete Site Furnishings - Planters

From: Contact Us | Find A Rep | 1-800-388-8778

Part 101

1.1 SUMMARY

A. Section Includes: Form Reservoir Planter of specified brand.

1.2 SUBMITTALS

A. and samples: data, shop drawings

1. Product Data: Manufacturer's specifications and installation instructions, including the following specific information:

a. Detailed specification of construction

b. Manufacturer's installation instructions

c. Maintenance literature

2. Shop Drawings: Indicate pertinent dimensions, general construction, component connections, and materials to be used.

3. Samples as requested by Architect.

1.4 Qualifications of Manufacturer: Manufacturer to be prequalified by specifier prior to bidding. Failure to prequalify may result in disqualification of the manufacturer of Reservoir Planter System and proven for at least:

1.10 WARRANTY

Manufacturer shall submit a written warranty for replacement of products.

MADE IN WAUSAU. Wausau Tile

RESERVOIR SYSTEM

Reservoir Planter Specifications TF4900

Part 202

2.1 MANUFACTURERS

A. Accordion manufacturer for Reservoir Planter of specified brand.

1.4 SUBMITTALS

A. and samples: data, shop drawings

1. Product Data: Manufacturer's specifications and installation instructions, including the following specific information:

a. Detailed specification of construction

b. Manufacturer's installation instructions

c. Maintenance literature

2. Shop Drawings: Indicate pertinent dimensions, general construction, component connections, and materials to be used.

3. Samples as requested by Architect.

1.4 Qualifications of Manufacturer: Manufacturer to be prequalified by specifier prior to bidding. Failure to prequalify may result in disqualification of the manufacturer of Reservoir Planter System and proven for at least:

1.10 WARRANTY

Manufacturer shall submit a written warranty for replacement of products.

MADE IN WAUSAU. Wausau Tile

Metal & Concrete Site Furnishings - Planters

From: Contact Us | Find A Rep | 1-800-388-8778

Part 101

1.1 SUMMARY

A. Section Includes: Form Reservoir Planter of specified brand.

1.2 SUBMITTALS

A. and samples: data, shop drawings

1. Product Data: Manufacturer's specifications and installation instructions, including the following specific information:

a. Detailed specification of construction

b. Manufacturer's installation instructions

c. Maintenance literature

2. Shop Drawings: Indicate pertinent dimensions, general construction, component connections, and materials to be used.

3. Samples as requested by Architect.

1.4 Qualifications of Manufacturer: Manufacturer to be prequalified by specifier prior to bidding. Failure to prequalify may result in disqualification of the manufacturer of Reservoir Planter System and proven for at least:

1.10 WARRANTY

Manufacturer shall submit a written warranty for replacement of products.

MADE IN WAUSAU. Wausau Tile

Metal & Concrete Site Furnishings - Planters

From: Contact Us | Find A Rep | 1-800-388-8778

Part 101

1.1 SUMMARY

A. Section Includes: Form Reservoir Planter of specified brand.

1.2 SUBMITTALS

A. and samples: data, shop drawings

1. Product Data: Manufacturer's specifications and installation instructions, including the following specific information:

a. Detailed specification of construction

b. Manufacturer's installation instructions

c. Maintenance literature

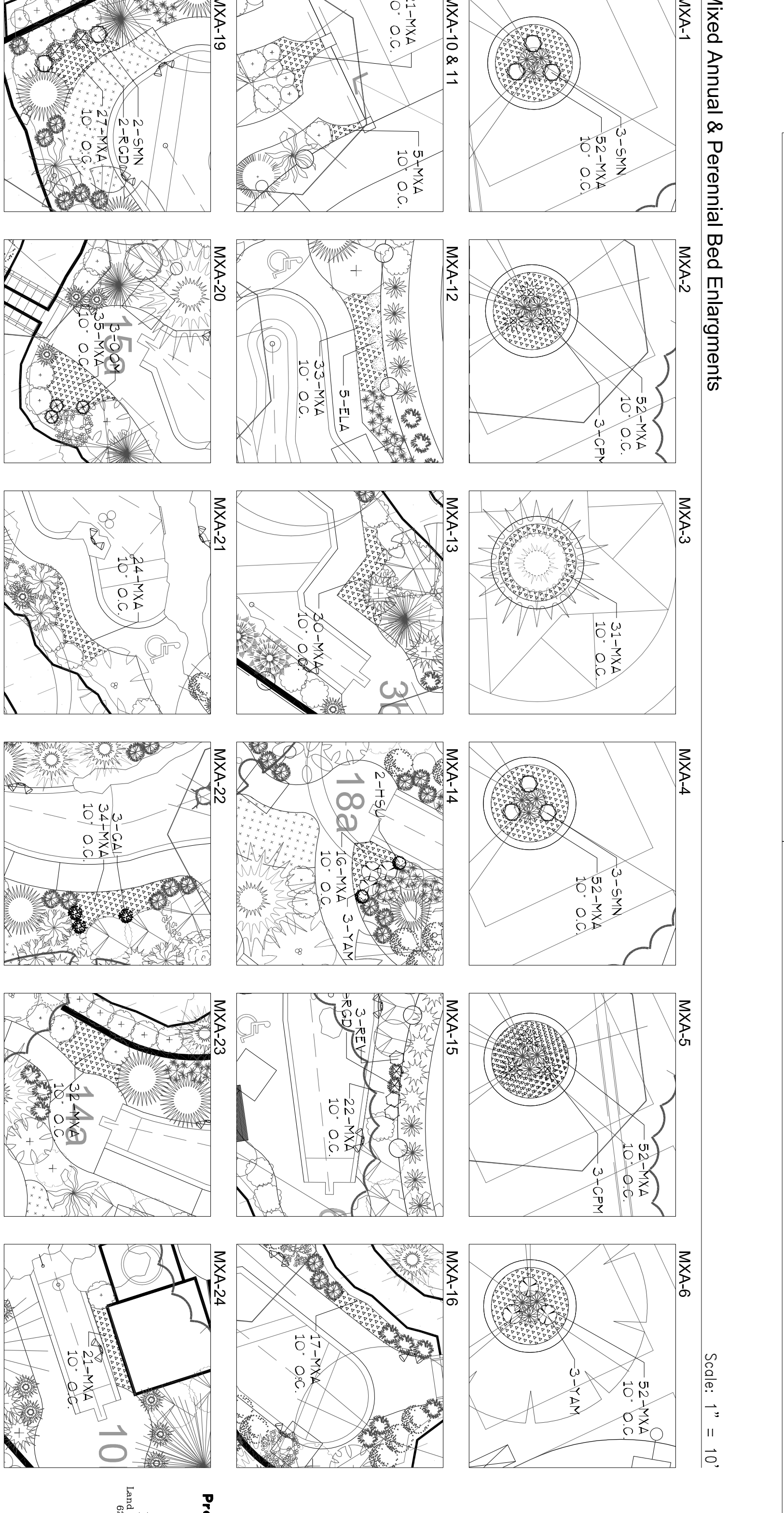
2. Shop Drawings: Indicate pertinent dimensions, general construction, component connections, and materials to be used.

3. Samples as requested by Architect.

1.4 Qualifications of Manufacturer: Manufacturer to be prequalified by specifier prior to bidding. Failure to prequalify may result in disqualification of the manufacturer of Reservoir Planter System and proven for at least:

1.10 WARRANTY

Manufacturer shall submit a written warranty for replacement of products.



Scale: 1" = 10'

Prepared By: KISH

Checked By: KISH

Date: 5/29/15

Project: 14801

Sheet Number: 15

REVISIONS	DATE	DESCRIPTION

SELECT DEVELOPMENT & CONTRACTING, LLC

660 EAST FRANKLIN ROAD, MERIDIAN, ID 83642

Boondocks Fun Center

CROWN POINT DEVELOPMENT PARKER, CO

Peter H. Rockwell, Architect
Architecture • Planning
595 S Americana Boulevard Boise, Idaho 83702
(208) 345-0566 (208) 345-1718 Fax (208) 387-0889
office@grboise.com



CONSTRUCTION DRAWINGS LANDSCAPE PLAN (PLANT LIST NOTES & DETAILS)

811

CALL TOLL FREE 811 FOR UTILITY INFORMATION

CALL 788-8111 FOR PUBLIC WORKS INFORMATION

CALL 338-8111 FOR WATER INFORMATION

