



REVISIONS		
DESCRIPTION	DATE	
OWNER CHANGES	2/16/15	
SITE SUBMITTAL	3/11/15	

OWNER  
**SELECT DEVELOPMENT & CONTRACTING, LLC**  
 660 EAST FRANKLIN ROAD, MERIDIAN, ID 83642

PROJECT  
**Boonlocks Fun Center**  
 CROWN POINT DEVELOPMENT  
 PARKER, CO

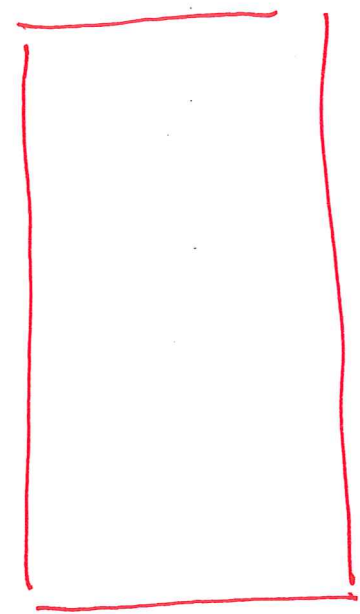
COPYRIGHT  
 2015

Peter H. Rockwell, Architect  
 Architecture • Planning  
 595 S Americana Boulevard Boise, Idaho 83702  
 (208) 345-0566 (208) 345-1718 Fax (208) 387-0889  
 office@pgrboise.com

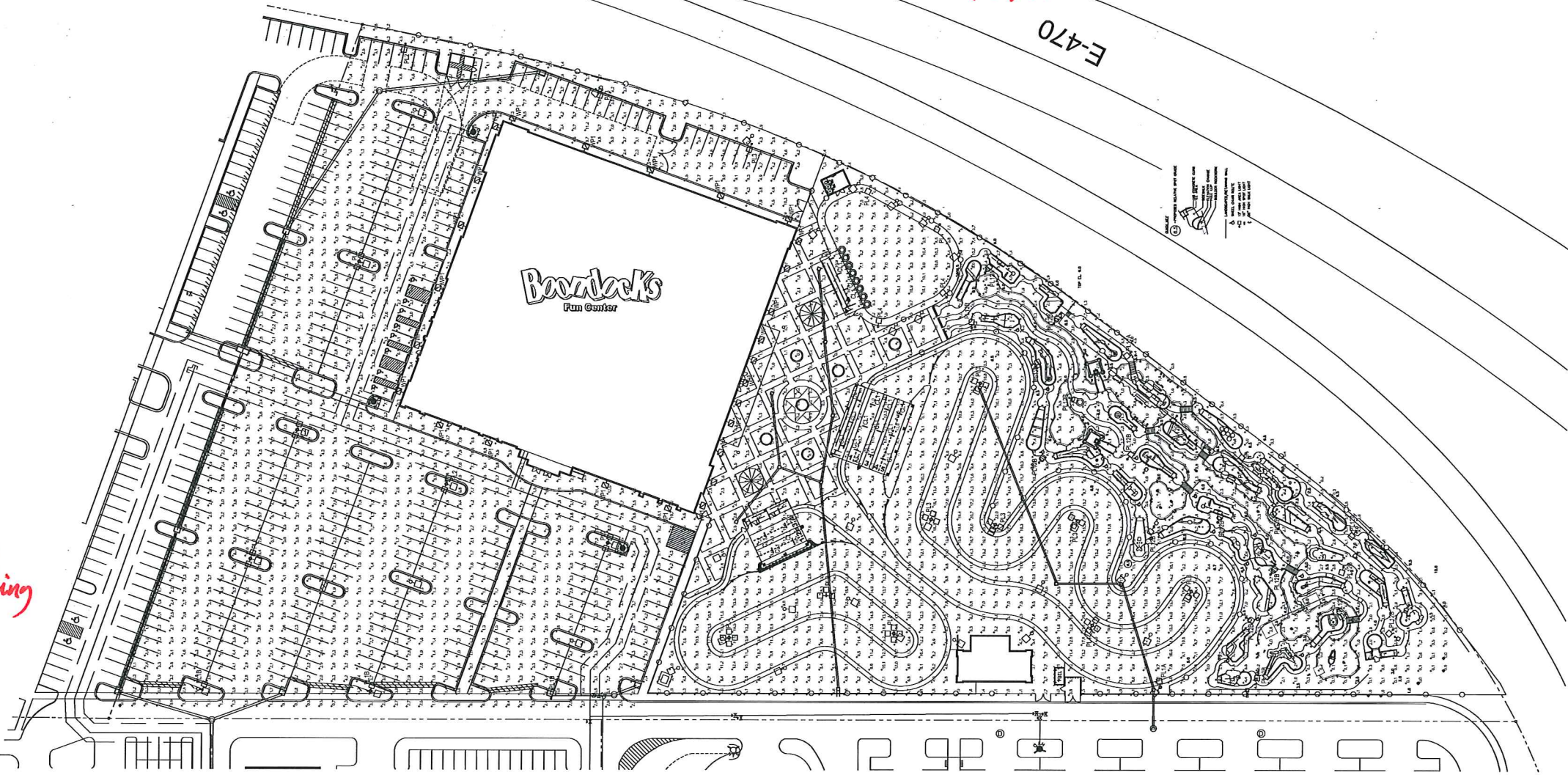
SHEET DATA  
 DRAWN BY: TF  
 CHECKED BY: KL  
 SCALE: AS NOTED  
 DATE: 3/06/15  
 PROJECT #: 14100

SHEET NUMBER  
**E1.1**

*Manufacturer's Cut-Sheet  
 Details on Proposed Lighting  
 Fixtures?*



*↑ Detail illustrating  
 height of freestanding  
 fixtures*



LIGHTING FIXTURE SCHEDULE-14-100					
TYPE	DESCRIPTION	MTG.	LAMPS	MFG. & CATALOG NUMBER	NOTES
CL1	ATTRACTION AREA CANOPY LIGHT, SEALED, FLUORESCENT	POLE MOUNTED	(2) 32W T8	LITHONIA NO. V90-2-32	
PL1A	EXTERIOR POLE FIXTURE, WITH TYPE 3 DISTRIBUTION, 1-HEAD PER POLE 25FT POLE, 2.5FT POLE BASE	POLE MOUNTED	(1) LED 31,000 LUMEN 315-WATT	McGRAW-EDISON NO. GLEON AE-06-LED-E1-T3-BZ-ZL	
PL1B	EXTERIOR POLE FIXTURE, WITH TYPE 4 DISTRIBUTION, 1-HEAD PER POLE 25FT POLE, 2.5FT POLE BASE	POLE MOUNTED	(1) LED 31,000 LUMEN 315-WATT	McGRAW-EDISON NO. GLEON AE-06-LED-E1-T4FT-BZ-ZL	
PL2	EXTERIOR POLE FIXTURE, WITH TYPE 4 DISTRIBUTION, 2-HEADS PER POLE 25FT POLE, 2.5FT POLE BASE	POLE MOUNTED	(2) LED 31,000 LUMEN 315-WATT	McGRAW-EDISON NO. GLEON AE-06-LED-E1-T4FT-BZ-ZL	
PL3	EXTERIOR POLE FIXTURE, WITH TYPE 5 DISTRIBUTION, 3-HEADS PER POLE 25FT POLE, 2.5FT POLE BASE	POLE MOUNTED	(3) LED 31,000 LUMEN 315-WATT	McGRAW-EDISON NO. GLEON AE-06-LED-E1-T4FT-BZ-ZL	
PL4	EXTERIOR POLE FIXTURE, WITH TYPE 6 DISTRIBUTION, 4-HEADS PER POLE 25FT POLE, 2.5FT POLE BASE	POLE MOUNTED	(4) LED 31,000 LUMEN 315-WATT	McGRAW-EDISON NO. GLEON AE-06-LED-E1-T4FT-BZ-ZL	
PL12A	ATTRACTION AREA, LED, EXTERIOR POLE FIXTURE, WITH TYPE 3 DISTRIBUTION, 1-HEAD PER POLE 12FT POLE, FLUSH POLE BASE	POLE MOUNTED	LED 8720 LUMEN 4000K	ANP LIGHTING NO. BVF1801-P078LD4-D-T3-40K	
PL12B	ATTRACTION AREA, LED, EXTERIOR POLE FIXTURE, WITH TYPE 5 DISTRIBUTION, 1-HEAD PER POLE 12FT POLE, FLUSH POLE BASE	POLE MOUNTED	LED 8720 LUMEN 4000K	ANP LIGHTING NO. BVF1801-P078LD4-D-T5-40K	
WL36	WALK WAY LIGHTING ON 36" STAND LED, WET LOCATION, LOW-VOLTAGE	PEDESTAL MOUNTED 36" AFG	(1) 150W METAL HALIDE	FLUORINARE NO. NP-0LED-LS-BZ	
WP1	EXTERIOR BUILDING MOUNTED FIXTURE, FORWARD THROW	WALL MOUNTED	(1) 150W METAL HALIDE	LITHONIA NO. WSR-150M-FT-TB-LP1-00BT	
WP2	EXTERIOR BUILDING MOUNTED FIXTURE, FORWARD THROW	WALL MOUNTED	(1) 70W METAL HALIDE	LITHONIA NO. WSR-70M-FT-TB-LP1-00BT	

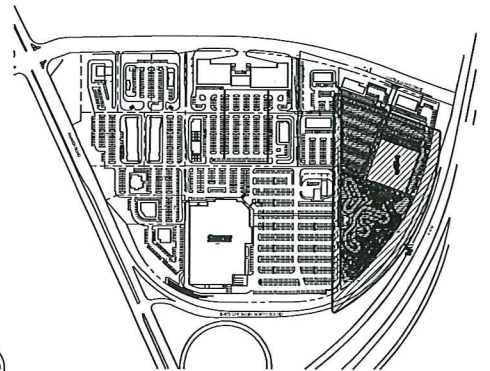
**SITE PHOTOMETRIC PLAN FIXTURE SCHEDULE**  
 SCALE NONE

STATISTICS						
Description	Symbol	Avg	Max	Min	Max/Min	Avg/Min
Attraction Area	+	6.9 ft	20.9 ft	0.0 ft	N/A	N/A
Parking Lot	+	3.3 ft	12.1 ft	0.4 ft	30.5:1	8.3:1

**SITE PHOTOMETRIC PLAN STATISTICS**  
 SCALE NONE

*At what height are building mounted fixtures attached to the wall.*

**SITE PHOTOMETRIC PLAN**  
 NORTH SCALE 1" = 40'-0"



**KEY PLAN**  
 NORTH SCALE NTS

\* IS THE EIFS SCORED?  
 HOW ARE THESE DIAGONAL LINES  
 ON THE FACADE? ARE THEY  
 NECESSARY?

PULL PROJECTING FACADE  
 TO HAVE CORNICE BREAK ROOF LINE

Use SPLIT FACE CMU  
 FOR WAINSCOT AND PULL  
 UP TO TOP OF DOOR LINE

APPLY ARIZONA TILE/NATURAL STONE  
 TILES TO THESE FACADE  
 LOCATIONS.

PULL PROJECTING  
 FACADE UP TO HAVE  
 CORNICE BREAK ROOF  
 LINE

Make sure  
 items projecting  
 from other elevations  
 are reflected on  
 adjacent elevations

NOTE:  
 MECHANICAL UNITS NOT SHOWN FOR CLARITY  
 EXPOSED MECHANICAL UNITS TO BE PAINTED  
 PER EXTERIOR FINISH SCHEDULE

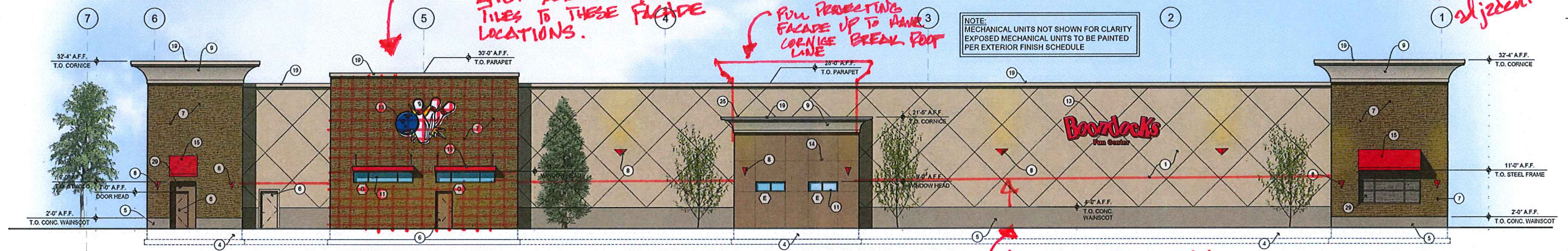
Use SPLIT FACE CMU  
 FOR WAINSCOT AND UP TO TOP  
 OF DOOR LINE

\* THE COSTCO BUILDING AT CROWN POINT  
 MADE USE OF "ARIZONA TILE/NATURAL STONE"  
 IN A "WINDFIRE" PATTERN IN SQUARE TILES  
 APPLIED TO EXTERIOR TO HELP BREAK UP  
 LONG, INDIFFERENTIATED PLANES USING  
 EIFS.

POURED CONCRETE →  
 IS NOT A PERMITTED  
 BUILDING MATERIAL  
 IN PARKER.  
 USE A SPLIT FACE  
 CMU INSTEAD TO  
 GIVE TEXTURE



WEST EXTERIOR OVERALL ELEVATION  
 SCALE 1/8" = 1'-0"



EAST EXTERIOR OVERALL ELEVATION  
 SCALE 1/8" = 1'-0"

KEY NOTES

- 1 CONCRETE TILT-UP WALL w/ TEX COIE FINISH
- 2 STEEL ENTRY CANOPY (PAINT), SEE DETAIL 7/A 3.7
- 3 PREFINISHED 24 GAUGE METAL ROOF COPING w/ SLOPED WOOD ELBORING
- 4 FOUNDATION SYSTEM SEE STRUCTURAL
- 5 SACK & SEAL CONCRETE FOUNDATION BASE
- 6 INSULATED METAL DOOR and HOLLOW METAL FRAME, SEE DOOR SCHEDULE
- 7 CULTURED STONE VENEER
- 8 WALL MOUNTED LIGHT FIXTURE w/ METAL SHROUD, METAL SHROUD BY SIGN SUPPLIER
- 9 STUCCO CORNICE
- 10 PREFINISHED 24 GAUGE GRAVEL STOP FLASHING
- 11 ALUMINUM STOREFRONT, SEE DOOR or WINDOW SCHEDULE
- 12 ROOF OVERFLOW DRAIN OUTLET, SEE PLUMBING
- 13 SIGNAGE BY OTHERS
- 14 1/2" V-GROOVE REVEAL
- 15 DOOR AWNINGS (PAINT), SEE DETAIL 6/A 3.7
- 16 12" HIGH BUILDING ADDRESS NUMBERS
- 17 KNOX LOCK BOX, COORDINATE w/ FIRE DEPARTMENT, RECESS INTO STONE
- 18 ACCENT FLAG, BY SIGN SUPPLIER
- 19 PREFINISHED 24 GAUGE METAL ROOF CAP
- 20 TAPERED COLUMN w/ STONE VENEER
- 21 PRECAST CONCRETE COLUMN CAP
- 22 SCULPTED FASCIA / GUTTER
- 23 4x4 PREFINISHED 24 GAUGE METAL DOWNSPOUT
- 24 STANDING SEAM METAL ROOFING
- 25 PREFINISHED 24 GAUGE METAL COUNTERFLASHING
- 26 STRUCTURAL COLUMN (PAINT)
- 27 DECORATIVE STEEL TRUSS (PAINT)
- 28 STAINLESS STEEL SERVICE COUNTER
- 29 STUCCO FINISH ON BACK OF WALL

REVISIONS	
DESCRIPTION	DATE
OWNER CHANGES	3/11/15
SITE SUBMITTAL	3/11/15

OWNER  
**SELECT DEVELOPMENT & CONTRACTING, LLC**  
 660 EAST FRANKLIN ROAD, MERIDIAN, ID 83642

PROJECT  
**Boonbuck's Fun Center**  
 CROWN POINT DEVELOPMENT  
 PARKER, CO

COPYRIGHT 2015

Peter H. Rockwell, Architect  
 Architecture • Planning  
 595 S Americana Boulevard Boise, Idaho 83702  
 (208) 345-0566 (208) 345-1718 Fax (208) 387-0889  
 office@p@boise.com

SHEET DATA	
DRAWN BY	DG
CHECKED BY	FR
SCALE	AS NOTED
DATE	3/11/15
PROJECT #	14001

SHEET NUMBER  
**A-2.1**

REVISIONS	
DESCRIPTION	DATE
OWNER CHANGE	2/16/15
MTS SUBMITTAL	3/11/15

OWNER  
**SELECT DEVELOPMENT & CONTRACTING, LLC**  
 660 EAST FRANKLIN ROAD, MERIDIAN, ID 83642

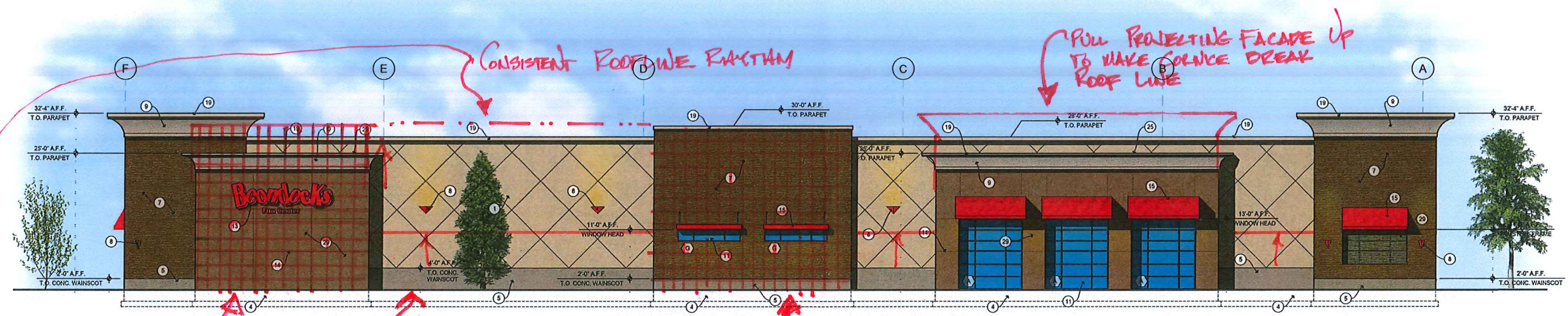
PROJECT  
**Boonlocks**  
 Turn Center  
 CROWN POINT DEVELOPMENT  
 PARKER, CO

COPYRIGHT  
 2015

Peter H. Rockwell, Architect  
 Architecture • Planning  
 595 S Americana Boulevard Boise, Idaho 83702  
 (208) 345-0566 (208) 345-1718 Fax: (208) 387-0889  
 office@p@boise.com

SHEET DATA	
DRAWN BY:	DG
CHECKED BY:	PR
SCALE:	AS NOTED
DATE:	3/11/15
PROJECT #:	14001

SHEET NUMBER  
**A-2.2**

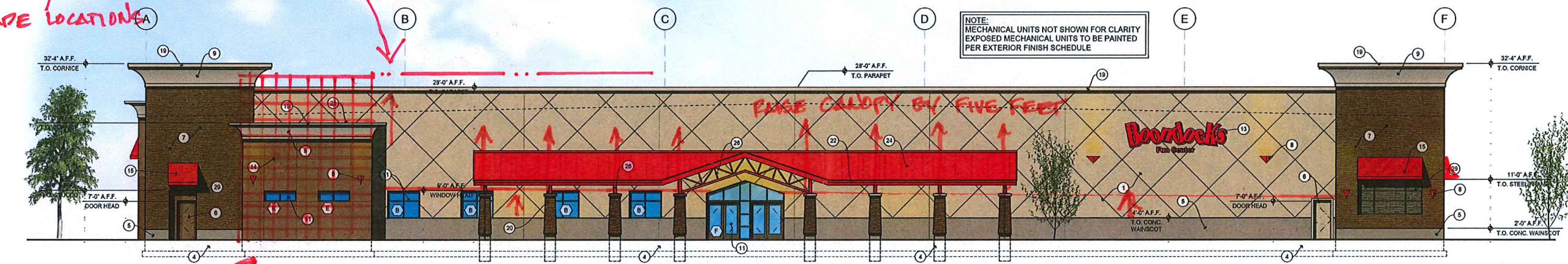


**NORTH EXTERIOR OVERALL ELEVATION**  
 SCALE 1/8" = 1'-0"

SEE DETAIL A/A-2.1 FOR REVEAL DIMENSIONS & BUILDING COLORS.

NOTE: MECHANICAL UNITS NOT SHOWN FOR CLARITY EXPOSED MECHANICAL UNITS TO BE PAINTED PER EXTERIOR FINISH SCHEDULE

APPLY ARIZONA TILE/NATURAL STONE TILES TO THESE FACADE LOCATIONS



**SOUTH EXTERIOR OVERALL ELEVATION**  
 SCALE 1/8" = 1'-0"

\* APPLICANT SHOULD BE ADVISED THAT WITHOUT A COLORS & MATERIALS SAMPLE BOARD, STAFF IS UNABLE TO DETERMINE IF RED ELEMENTS (AWNINGS & CANOPY) COMPLY WITH MAXIMUM ILLUMINANCE LEVELS.