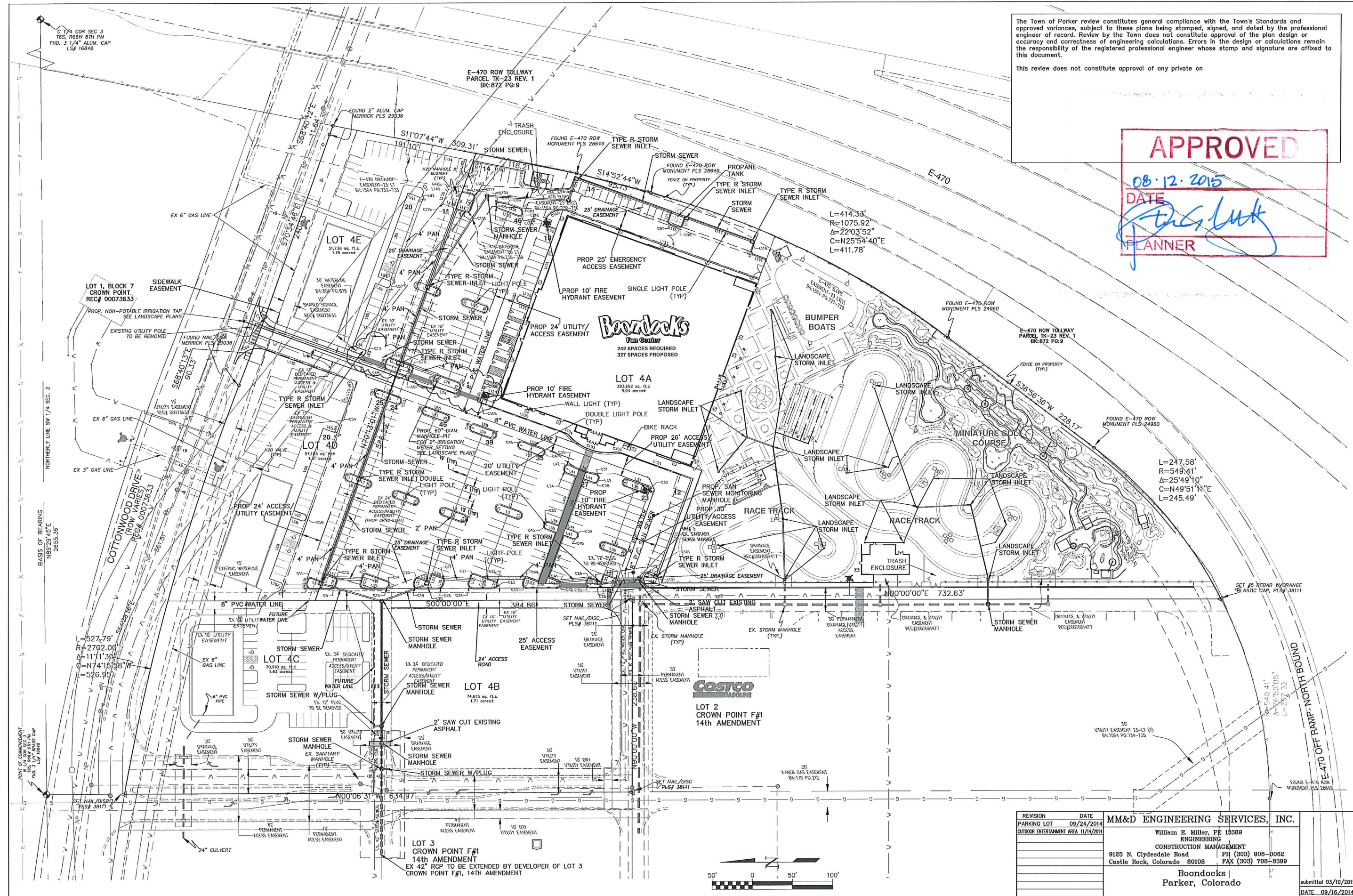


The Town of Parker review constitutes general compliance with the Town's Standards and approved variances, subject to these plans being stamped, signed, and dated by the professional engineer of record. Review by the Town does not constitute approval of the plan design or accuracy and correctness of engineering calculations. Errors in the design or calculations remain the responsibility of the registered professional engineer whose stamp and signature are affixed to this document.

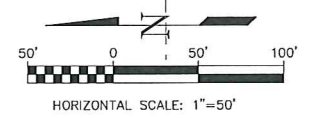
This review does not constitute approval of any private on

APPROVED

08.12.2015
DATE
Chris Lutz
PLANNER



REVISION	DATE	MM&D ENGINEERING SERVICES, INC.
PARKING LOT	09/24/2014	William E. Miller, PE 13389 ENGINEERING
OUTDOOR ENTERTAINMENT AREA	11/14/2014	CONSTRUCTION MANAGEMENT 9125 N. Clydesdale Road PH (303) 908-0062 Castle Rock, Colorado 80108 FAX (303) 708-8399
		Boondocks Parker, Colorado
		Site Plan Construction Plans

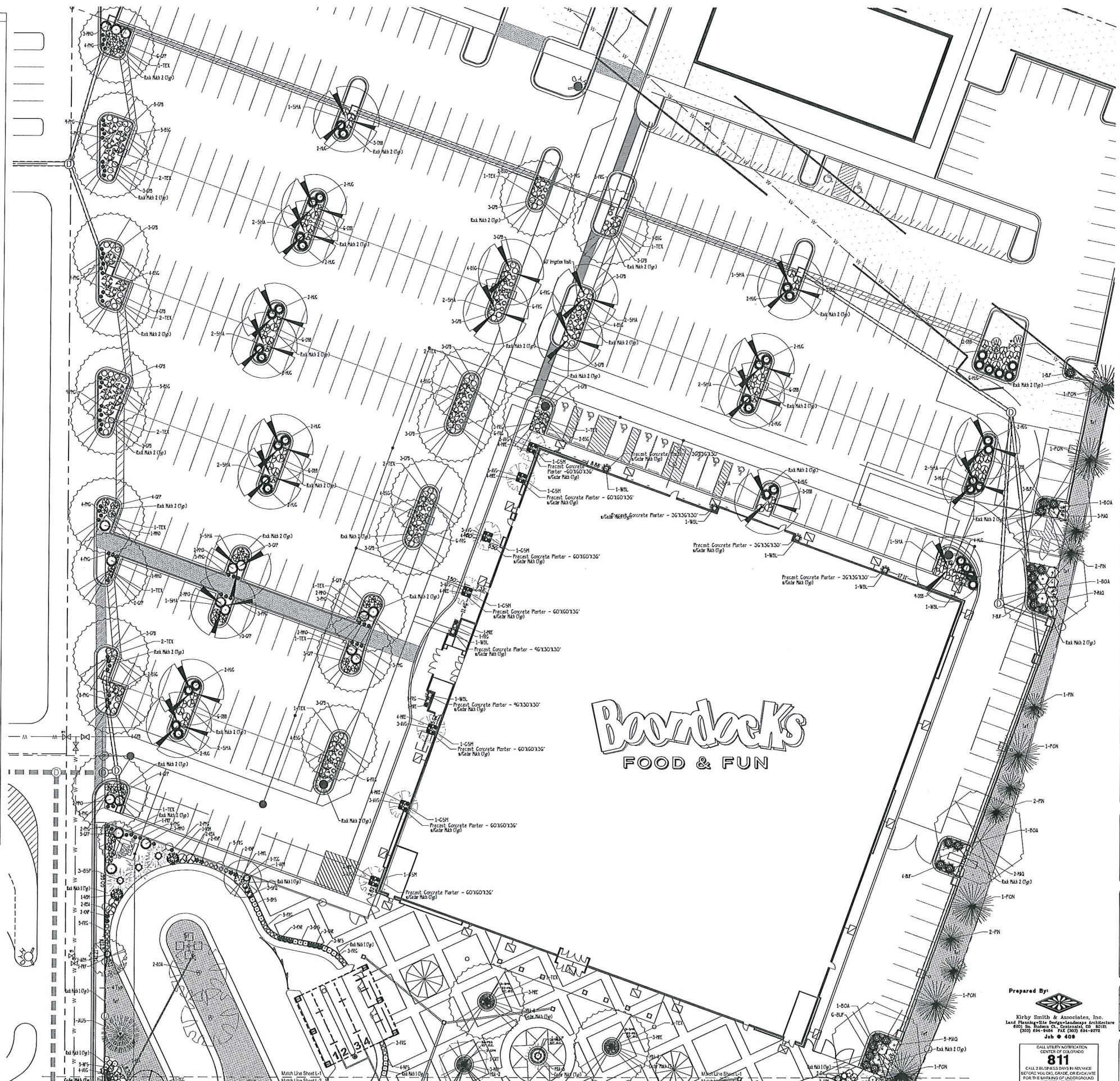
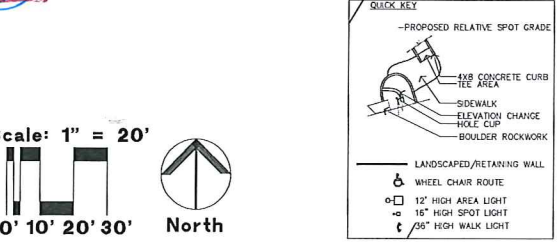


submitted 03/10/2015
DATE 09/16/2014
DES/CHK WEM/AM
PROJ. NO. 13-343
SHEET 3 OF 27

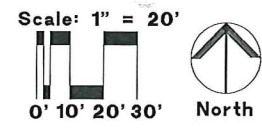
PLANT LEGEND

	WFR 50'x20'-25'		GSG 3'x4'
	CSP 60'x35'		MSM 3'x4'
	BSP 30'x10'		MMO 5'x6'
	PON 40'x25'		OGH 3'x4'-5'
	MEJ 10'x5'		MRE 1.5'x2'
	SPA 15'x5'		SEA 8'x6'
	WBL 20'x5'		BLR 6'x6'
	CSM 25'x15'		LPS 2'x3'
	IMP 35'x25'		NFS 3'x3'
	SHA 50'x35'		FQS 3'x3'
	BOA 70' x 50'		MKL 5'x5'
	TEX 50' x 40'		CPL 15'x5'
	ROA 50'x30'		DAC 6'x4'
	EOA 50'x40'		KNP 3'x3'
	RL 40'x25'		KNR 3'x3'
	AMM 20'x15'		CFM 24'-36'x24'
	ALG 20'x10'		GBG 14'-24'x12'-24'
	GRT 30'x25'		ELA 12'-18'x12'-18'
	FRF 20'x20'		GRD 30'x24'
	TCG 20'x20'		SMN 18'x18'
	BSL 3'x4'		
	BSG 4'x6'		
	EGG 3'x5'		
	AND 18'x5'		
	ARM 4'x4'		
	BCJ 10'x6'		
	BJJ 12'x6'		
	HUJ 18'x6'		
	OLD 3'x4'		
	RBA 4'x5'		
	CPB 2'x3'		
	BBU 5'x5'		
	BMS 3'x3'		
	RTD 8' x 8'		
	CTT 1'x3'		
	CRK 2'x3.5'		
	DBB 5'x4'		
	RSA 4'x3'		
	GFP 3'x4'		
	GDP 3' x 3'		
	PBS 1.5'x3'		

- Perennials To Be Included In MSA Mixed Annuals/Perennials Area:
- YAM Yellow Moonshine/Pink/Yellow 20'x21'
 - HSU Hyssop Sunset 24'-36'x18'-30'
 - REV Red Valerian 24'x24'
 - COM Gopceps Moorbees 18'-24'x12'-18'
 - LEA Little Blue Star 3'-4'x24'
 - PHS Maiden Grass, Purple/Flame 3'-4'x18'-24'
 - RSG Red Switch Grass 3'-4'x24'-30'
 - LLG Little Bluestem 3'-4'x2'



APPROVED
 08.12.2015
 DATE
 [Signature]
 PLANNER



REVISIONS

DESCRIPTION	DATE
OWNER CHANGES	2/16/15
SITE SUBMITTAL	3/11/15
TOWN & CC REVISIONS	8/7/15
REG. BOARD REVISIONS	8/21/15
REG. BOARD APPROVAL	8/31/15

OWNER
SELECT DEVELOPMENT & CONTRACTING, LLC
 860 EAST FRANKLIN ROAD, MERIDIAN, ID 83642

PROJECT
Boondocks
 Food & Fun
 CROWN POINT DEVELOPMENT
 PARKER, CO

COPYRIGHT 2015

Peter H. Rockwell, Architect
 Architecture + Planning
 595 S. Americana Boulevard • Boise, Idaho 83702
 (208) 345-0566 (208) 345-1718 Fax (208) 387-0889
 office@pbrise.com

SITE PLAN LANDSCAPE PLAN (NORTH)

SHEET DATA
 DRAWN BY: KJS
 CHECKED BY: KJS
 SCALE: 1" = 20'
 DATE: 3/11/15
 PROJECT: 14001
 SHEET NUMBER
L-1

Prepared By:

 Kirby Smith & Associates, Inc.
 Lead Landscape Architect
 800 S. Americana Blvd., Suite 200, Boise, ID 83702
 (208) 345-0566 FAX (208) 345-1718
 Job # 408

CALL UTILITY NOTIFICATION CENTER OF IDAHO
811
 CALL 3 BUSINESS DAYS BEFORE BEFORE YOU DIG, GRADE, OR EXCAVATE FOR THE MARKING OF UNDERGROUND UTILITY LINES.

PLANT LEGEND

CCF G-8 White Fr 50'X20'-25'	CSP G' Colorado Spruce 60'X35'
B5F 8' Bakeri Spruce 30'X10'	FN G' Pion Pine 25' X 15'
AUS G' Austrian Pine 50'X20'	PN G' Ponderosa Pine 40'X25'
MEI 5-7 Gal. Medora Juniper 10'X5'	SPA 5-7 Gal. Spartan Juniper 15'X5'
WBL 10 Gal. Wichita Blue Juniper 20'X5'	CSM Crimson Sentry Maple 25'X15'
IMP Imperial Locust 35'X25'	SHA Shearwater Honeylocust 50'X35'
BOA 25' Gal. Burr Oak 70' X 50'	TEX Texas Rd Oak 50' X 40'
ROA Northern Red Oak 50'X30'	EOA English Oak 30'X40'
RLJ Redwood Linden 40'X25'	CMC Amur Maple G' Clump-515 20'x15'
ALG Thistle Alder 20'X10'	GRT Goldenrain Tree 30'X25'
FRF Fraxino Crab 20'X20'	TGG Thunderchild Crab 20'X20'
BSL Scotch Lena Broom 3'X4'	BSG Spanish Gold Broom 4'X6'
EGG Eonymus Emerald Gaeety 3'X5'	AND Andora Juniper 18'X6'
ARM Armstrong Juniper 4'X4'	BCH Blue Chip Juniper 10'X6'
BUF Buffalo Juniper 12'X6'	HUG Hughes Juniper 18'X6'
OLD Old Gold Juniper 3'X4'	RBA Red Barberry 4'X5'
CPB Crimson Pinyon Barberry 2'X3'	SBE Butterfly Bush 5'X5'
SHS Blue Hosta 3'X3'	RTD Redwing Dogwood 8' X 8'
CIT Tom Thumb Cotoneaster 1'X3'	CDI Cotoneaster, Shrub 6'X4'
CRD Rock Cotoneaster 2'X3.5'	DBD Dwarf Burning Bush 5'X4'
RSA Russian Sage 4'X3'	GFP Goldfinger Potentilla 3'X4'
GDP Gold Drop Potentilla 3' X 3'	FBS Peasee Bittes Bend Cherry 1.5'X6'
YAH Yellow Moonshine/Pink/Yellow 20'X21'	HSU Hyssop Sunset 24"-36"X15"-30"
REV Red Valerian 24"x24"	COM Gopepp's Moonbeam 18"-24"x12"-18"
CPM Cornflower Magnus 24"-36"x24"	GAL Gallardia Burgundy 14"-24"x12"-24"
ELA English Lavender 12"-18"x12"-18"	RGD Goldstrum Rudbeckia 30"x24"
SHN Salvia May Night 18'X18'	

Perennials To Be Included in MIA Mixed Areas/Perennials Areas:

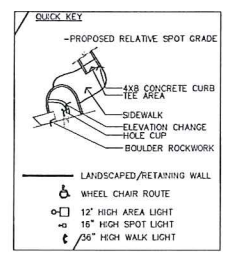
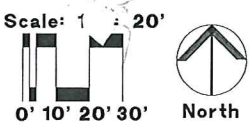
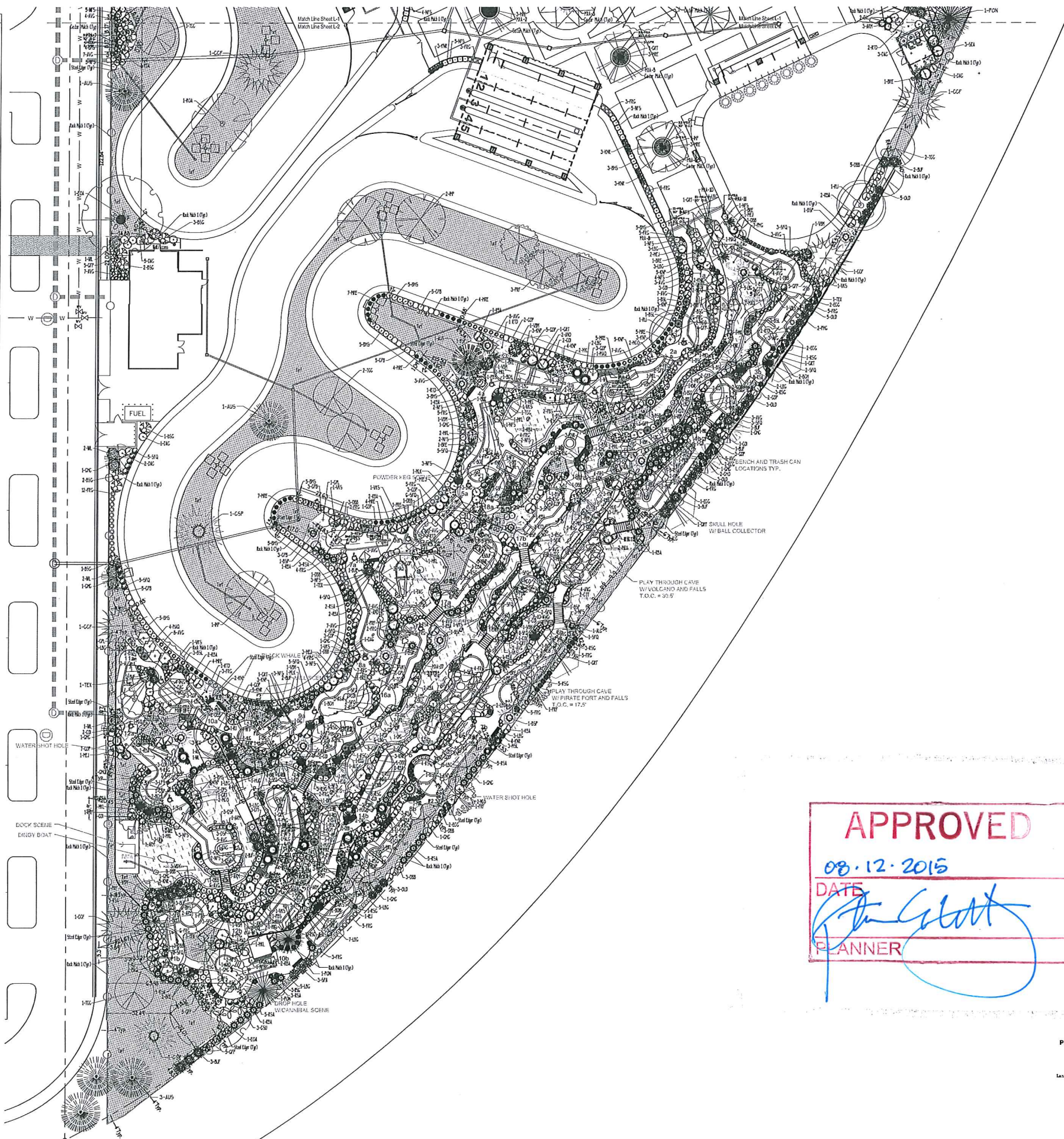
YAH Yellow Moonshine/Pink/Yellow 20'X21'	CPM Cornflower Magnus 24"-36"x24"
HSU Hyssop Sunset 24"-36"X15"-30"	GAL Gallardia Burgundy 14"-24"x12"-24"
REV Red Valerian 24"x24"	ELA English Lavender 12"-18"x12"-18"
COM Gopepp's Moonbeam 18"-24"x12"-18"	RGD Goldstrum Rudbeckia 30"x24"
	SHN Salvia May Night 18'X18'

Ornamental Grasses:

FRG Feather Reed Grass 5'-6"x24"	AVG Blue Arena Grass 2'X2'
PMG Maiden Grass, Purple/Flame 3'-4"x18"-24"	RSR Red Switch Grass 3'-4"x24"-30"
LSG Little Bluestem 3'-4'X2'	

Materials:

- Precast Concrete Planters
- Triparted Turf (Revelle) - Texas Hybrid mix
- Water Features, Fountains & Falls
- MIA Mixed Areas/Perennials



APPROVED
 08.12.2015
 DATE

 PLANNER

REVISIONS

DESCRIPTION	DATE
OWNER CHANGES	2/16/11
SPR. REVISIONS	3/11/11
TOWN & ACC. REVISIONS	5/14
REG. REVISIONS	5/21/11
REG. REVISIONS	8/11

OWNER
SELECT DEVELOPMENT & CONTRACTING, LLC
 660 EAST FRANKLIN ROAD, MERIDIAN, ID 83662

PROJECT
Boonacks
 JOINT DEVELOPMENT
 PARKER, CO

COPYRIGHT
 2015

Peter H. Rockwell, Architect
 Architecture • Planning
 595 S Americana Boulevard Boise, Idaho 83702
 (208) 345-0566 (208) 345-1718 Fax (208) 387-0889
 office@pbr Boise

SITE PLAN
 LANDSCAPE PLAN
 (SOUTH)

SHEET DATA

DRAWN BY:	KJS
CHECKED BY:	KJS
SCALE:	1" = 20'
DATE:	3/11/15
PROJECT #:	14001
SHEET NUMBER:	

Prepared By:

 Kirby Smith & Associates, Inc.
 Lead Landscape Architect
 800 W. Hudson St., Colorado Springs, CO 80901
 (303) 441-8844 FAX (303) 441-8822
 Job # 408

CALL UTILITY NOTIFICATION CENTER OF COLORADO
811
 CALL 24 HOURS IN ADVANCE BEFORE YOU DIG, GRUB, OR EXCAVATE FOR THE MARKING OF UNDERGROUND MEMBER UTILITIES.

L-2

Boondocks Site Calculations

Parker, CO		Crown Point Center		
Parking	126,496.00 sf	2.90 acre(s)	32.1% of total site	10%
Landscape Islands	12,674.00 sf	10% of parking lot		
Total Parking Area	126,496.00 sf	2.90 acre(s)	32.1% of total site	
'Green' Space	77,467.00 sf	1.78 acre(s)	19.7% of total site	15%
Landscape w/o Parking Islands	64,793.00 sf	1.49 acre(s)	16.5% of total site	
Hardscape	27,571.00 sf	0.63 acre(s)	7.0% of total site	
Entry Plaza	3,987.00 sf			
Rear Patio	23,584.00 sf			
Total Landscape Area	105,038.00 sf	2.41 acre(s)	26.7% of total site	
Main Building	60,480.00 sf	1.39 acre(s)	15.4% of total site	
Maintenance Building	1,950.00 sf			
Pump House	248.00 sf			
Total Building Area	62,678.00 sf	1.44 acre(s)	15.9% of total site	
Attractions	65,142.00 sf	1.50 acre(s)	16.5% of total site	
Bumper Boats Pond	8,671.00 sf			
Go Cart Tracks	56,471.00 sf	1.30 acre(s)	14.3% of total site	
Back of House circulation	34,340.00 sf	0.79 acre(s)	8.7% of total site	
Total Attraction Area	99,482.00 sf	2.28 acre(s)	25.3% of total site	
Total Site	393,695.60 sf	9.04 acre(s)		

Plant Material Areas (Entire Site)

Site Area Description	Size/Sq. Ft.
Turf Areas - Reveille Texas hybrid bluegrass (Irrigated)	27,131 Sq. Ft.
Planting Areas (Irrigated)	31,696 Sq. Ft.
Total Landscape Area	58,827 Sq. Ft.

Parking Area Landscape Island Summary

Area/Sq. Ft.	Trees				Notes
	Deciduous/Ornamental	Evergreen	Shrubs	Grasses	
12,674 Sq. Ft.	48	1	293	99	

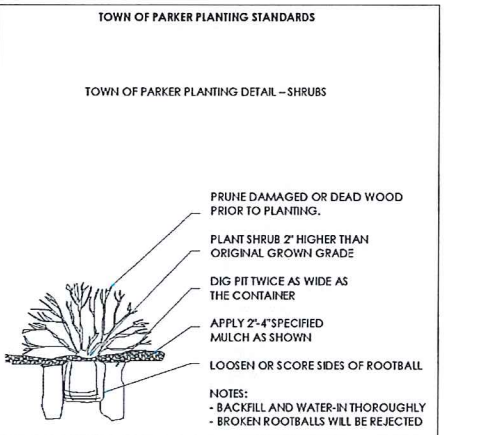
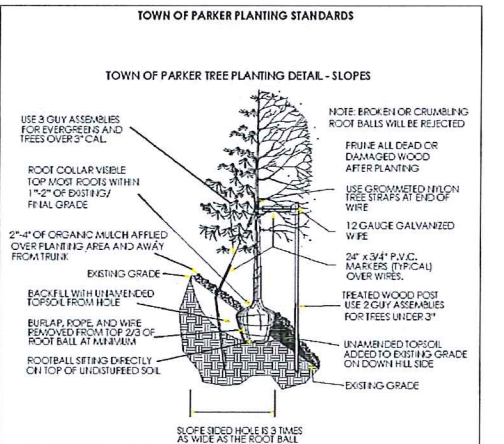
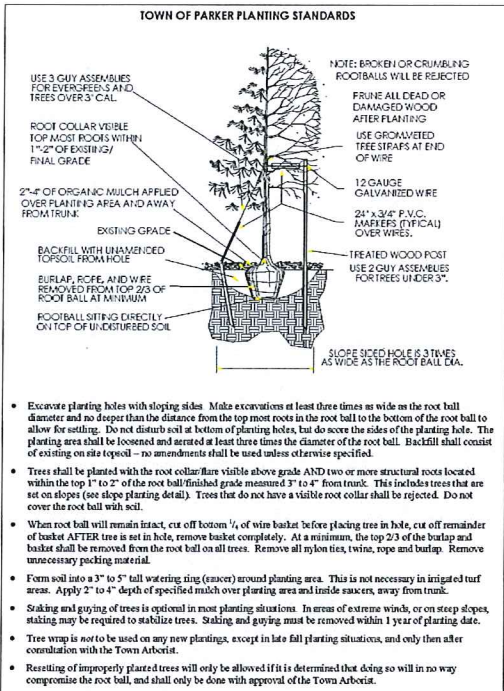
Overall Site Landscape Area Summary (Excluding Parking Lot Islands)

Area/Sq. Ft.	Trees				Notes
	Deciduous/Ornamental	Evergreen	Shrubs	Grasses	
64,793 Sq. Ft.	93	76	1232	636	Evergreen Trees = 45% Deciduous Trees = 55%

Grand Total Overall Site Area Summary (Not Covered By Bldg. & Req. Pkg.)

Area/Sq. Ft.	Trees				Notes
	Deciduous/Ornamental	Evergreen	Shrubs	Grasses	
204,520 Sq. Ft.	141	77	1525	735	At 1 Tree & 5 Shrubs/1500 sf = 136 Trees & 681 Shrubs Required Evergreen Trees = 35%

Landscape Area	Low Water Native Grass and Spray Shrubs & Perennials			Drip Irrigated area (20,000sf = 1 SFE)	Sub-Total of Non-Irrigated area (calculated) Areas	PWSDF per 6000	SFE Requirement (Sub-Total Calculation divided by 6000 = requirement)
	High Water TURF (6,000sf = 1 SFE)	Perennials (10,000sf = 1 SFE)	Perennials (20,000sf = 1 SFE)				
Area #1	27,131 sf x 1 = 27,131	2088 sf x 6 = 12,528	23,330 sf x 3 = 69,990	6,280 sf x 0 = 0	35,382 sf	6,000	5.90 SFE's = 2" Tap Required



NOTES:

- All work shall conform to local Town Codes, and contractor shall be responsible for obtaining all necessary permits. Contractor shall verify location of all existing underground utilities, lines, and structures prior to excavation or trenching. Damage to these utilities shall be repaired by the contractor at no cost to the owner or the landscape architect.
- No substantial change from the approved landscape plan may occur without prior review of the Parker Water and Sanitation District, which may require additional irrigation taps for changes due to more water intensive landscaping.
- All plants shall meet or exceed the plant quality and species standards of the American Standard for Nursery Stock ANSI Z60.1-2004, as amended. Selected plant materials shall be healthy and shall be nursery-grown and adapted to the local area.
- Unless otherwise indicated on the plan, all trees shall be located at least 4 ft. from the parking lot curb or edge of a parking island.
- All shrub beds and turf areas shall receive the following soil amendments per 1000 s.f.: 3 CY "Supreme Organics" compost (50% cow manure, 50% wood fines, supplied by Jensen Sales, Inc., Denver) or equivalent, plus 15 lbs of 20-10-5 commercial fertilizer. Rotate to a minimum depth of 6".
- Plant backfill mix shall be: 1/3 "Supreme Organics", or approved equal 2/3 on site soil.
- All annual and perennial beds, and freestanding planters areas will be mulched with shredded Cascade cedar, or other acceptable shredded cedar mulch, to a depth of 3". With no weed barrier.
- All trees in turf grass areas must have tree rings mulched with shredded Cascade cedar, or other acceptable shredded cedar mulch, to a depth of 3", over DuPont "Typar" weed barrier, or approved equal.
- Shrub beds near mini-golf course and race track areas to be mulched with 1-1/2" Mountain Granite or Bluestone to a depth of 3", over DuPont "Typar" weed barrier, or approved equal.
- All parking lot island and parking lot perimeter areas to be mulched with 1-1/2" Tan (Western) River Rock to a depth of 3", over DuPont "Typar" weed barrier, or approved equal.
- Steel edger to be rolled top, 14 gage X 4" deep, green painted Dura-edge edger, or approved equal.
- All landscaped areas and plant materials shall be watered by automatic underground systems. The irrigation system will provide full coverage to all turf and plant material areas. Turf areas to be spray irrigated, and shrubs and trees to be drip irrigated.
- Landscaped areas and plant materials shown on these plans indicate those proposed to be installed. However, alternative plant materials may be installed during final construction, if done in compliance with the Town approved plant lists.
- The Owner, his successors and assigns, shall be responsible for installation, maintenance and replacement of all landscaping materials shown or indicated on the approved Site Plan or Landscape Plan on file in the Planning Department. Landscaping will be installed as delineated on the plan, and in conjunction with any development phasing.

PLANT & MATERIALS SCHEDULE

QTY.	ITEM	COMMON NAME	SCIENTIFIC NAME	SIZE	Comments
DECIDUOUS SHADE TREES					
4	IMP	Imperial Honeylocust	Gleditsia triacanthos 'Imperial'	2" Cal	B&B
20	SHI	Shademaster Honeylocust	Gleditsia triacanthos 'Shademaster'	2" Cal	B&B
6	RLI	Redmond Linden	Tilia americana 'Redmond'	2" Cal	B&B
7	CSM	Crimson Sentry Maple	Acer platanoides 'Crimson Sentry'	2" Cal	B&B
4	BOA	Bur Oak	Quercus macrocarpa	2" Cal	B&B
4	EOA	English Oak	Quercus robur	2" Cal	B&B
3	ROA	Northern Red Oak	Quercus rubra	2" Cal	B&B
28	TEX	Texas Red Oak	Quercus buckleyi	2" Cal	B&B
EVERGREEN TREES					
5	CCF	Concolor Fir/White Fir	Abies concolor	6" Ht	B&B
7	AUS	Austrian Pine	Pinus nigra	6" Ht	B&B
7	PIN	Pinon Pine	Pinus edulis	6" Ht	B&B
2	PON	Ponderosa Pine	Pinus ponderosa	6" Ht	B&B
21	BSP	Baker Spruce	Picea pungens 'Baker'	6" Ht	B&B
2	CSP	Colorado Blue Spruce	Picea pungens	6" Ht	B&B
15	MEJ	Medora Juniper	Juniperus scopulorum 'Medora'	7 Gal.	4" Min. Ht.
5	SPA	Spartan Juniper	Juniperus chinensis 'Spartan'	7 Gal.	4" Min. Ht.
7	WBL	Wichita Blue Juniper	Juniperus scopulorum 'Wichita Blue'	7 Gal.	4" Min. Ht.
DECID. ORNAMENTAL TREES					
14	PRF	Prunella Crab	Malus spp. 'Prunella'	1.75" Cal	B&B
6	ALC	Thunderchild Crab	Malus x 'Thunderchild'	1.75" Cal	B&B
11	TCC	Thunderchild Crab	Malus x 'Thunderchild'	1.75" Cal	B&B
12	GRT	Goldenrain Tree	Koeleruteria paniculata	1.75" Cal	B&B
18	GRAC	Ginnala Hilly	Acer ginnala	6-8" Clump	B&B
DECIDUOUS SHRUBS					
64	CPB	Crimson Pygmy Barberry	Berberis thunbergii 'Aurropurea Nana'	5 Gal.	15" Min. Ht.
51	RBA	Red Barberry	Berberis thunbergii 'Aurropurea'	5 Gal.	18" Min. Ht.
106	DBB	Dwarf Burning Bush	Euroyymus alata 'Compacta'	5 Gal.	18" mul. established
26	BRE	Butterfly Bush	Buddleia davidii	5 Gal.	24" mul. established
39	DAC	Dwarf American Cranberry	Viburnum trilobum 'Compactum'	5 Gal.	18" mul. established
13	RTD	Red Twig Dogwood	Cornus sericea 'Red Twig'	5 Gal.	24" mul. established
3	CPL	Common Purple Lilac	Syringa vulgaris	5 Gal.	18-24" mul. established
39	MKL	Miss Kim Lilac	Syringa patula 'Miss Kim'	5 Gal.	18-24" mul. established
63	GDP	Gold Drop Potentilla	Potentilla fruticosa 'Gold Drop'	5 Gal.	18-24" mul. established
11	GFP	Goldfinger Potentilla	Potentilla fruticosa 'Goldfinger'	5 Gal.	24" mul. established
75	RSA	Russian Sage	Perovskia atriplicifolia	5 Gal.	24" mul. established
6	PBS	Panama Buttes Sand Cherry	Prunus besseyi 'Panama Buttes'	5 Gal.	18" mul. established
9	DSP	Daphne Spirea	Spiraea japonica var. alpina	5 Gal.	18" mul. established
97	SFQ	Fairy Queen Spirea	Spiraea trilobata 'Fairy Queen'	5 Gal.	24" mul. established
111	NFS	Neon Flash Spirea	Spiraea japonica 'Neon Flash'	5 Gal.	24" mul. established
28	LPS	Lime Fire Spirea	Spiraea japonica 'Lime Fire'	5 Gal.	18" mul. established
16	VBM	Blue Muffin Viburnum	Viburnum dentatum 'Christom'	5 Gal.	24-30" mul. established
23	VKS	Korean Spice Viburnum	Viburnum carlesii	5 Gal.	24" mul. established
10	CSJ	Staghorn Sumac	Rhus typhina 'Lancinata'	5 Gal.	24" mul. established
61	KNP	Knockout Pink Rose	Rosa 'RADCON'	2 to 5 Gal.	24" mul. established
55	KNR	Knockout Red Rose	Rosa 'RADRAZ'	2 to 5 Gal.	24" mul. established
BROADLEAF EVERGREEN SHRUBS					
26	BSL	Broom Scotch Lantana	Croton dallmannii 'Lantana'	5 Gal.	20-24" Min. Ht.
66	BSG	Broom Spanish Gold	Croton purpur Spanish Gold'	5 Gal.	20-24" Min. Ht.
11	CTT	Tom Thumb Cotoneaster	Cotoneaster apiculata 'Tom Thumb'	5 Gal.	18" Min. Spread
27	COJ	Shrub Cotoneaster	Cotoneaster divaricata	5 Gal.	20-24" Min. Ht.
4	CHO	Rock Cotoneaster	Cotoneaster horizontalis	5 Gal.	18" Min. Spread
16	EOG	Canada Gold Euroyymus	Euroyymus alata 'Canada Gold'	5 Gal.	18-20" Min. Ht.
32	MAQ	Mahonia Oregon Grape	Mahonia aquifolium 'Kings Ransom'	5 Gal.	20" Min. Ht.
17	MEQ	Compact Mahonia Oregon Grape	Mahonia aquifolium 'Compacta'	5 Gal.	20" Min. Ht.
65	MRE	Creeping Oregon Grape	Mahonia repens	1 Gal.	12" Min. Ht.
EVERGREEN SHRUBS					
9	AND	Andora Juniper	Juniperus horizontalis 'Youngblow'	5 Gal.	18" Min. Spread
16	ARM	Armstrong Juniper	Juniperus chinensis 'Armstrong'	5 Gal.	18" Min. Spread
13	BCH	Blue Chip Juniper	Juniperus horizontalis 'Blue Chip'	5 Gal.	18" Min. Spread
45	BLF	Buffalo Juniper	Juniperus sibirica 'Buffalo'	5 Gal.	18" Min. Spread
62	HSE	Hughes Juniper	Juniperus horizontalis 'Hughes'	5 Gal.	18" Min. Spread
3	SEA	Sea Green Juniper	Juniperus x media 'Sea Green'	5 Gal.	18" Min. Spread
19	OLD	Old Gold/Gold Coast Juniper	Juniperus x media 'Old Gold'	5 Gal.	18" Min. Spread
10	WL	Wilson Blue Rug Juniper	Juniperus horizontalis 'Wilson'	5 Gal.	18" Min. Spread
19	MMO	Mugo Pine, Mops	Pinus mugo 'Mops'	3 Gal.	24" Min. Ht.
7	MSL	Mugo Pine, Slowmound	Pinus mugo 'Slowmound'	3 Gal.	12" Min. Ht.
9	GSP	Globe Blue Spruce	Picea pungens 'Globose'	3 Gal.	18" Min. Ht.
ORNAMENTAL GRASSES					
192	AVG	Blue Avena Oat Grass	Helictotrichon sempervirens	1 Gal.	12" Min. Spread
217	FRG	Feather Reed Grass	Calamagrostis acutiflora 'Karl Foerster'	1 Gal.	24-30" oc.
118	LBS	Lute Bluestem	Schizanthium scopulorum 'Blues'	1 Gal.	18-24" oc.
121	PMG	Maiden Grass, Purple/Flame	Miscanthus sinensis 'Purpureuscent'	1 Gal.	18-24" oc.
67	RCG	Red Switch Grass	Panicum virgatum 'Shenandoah'	1 Gal.	24-30" oc.
ANNUALS					
750	MXA	Mixed Annuals / Perennials / Winter Panties - 80% Annuals		2" - 6" pots	10' oc.
50	MXA	Mixed Annuals / Perennials / Winter Panties - 20% Perennials		1 Gal.	20' oc.

Turf Areas: Approx. 27,131 square feet total - To be sodded with "Reveille", Texas Hybrids mix, or approved equal.
 Rock Mulch 1 Beds: Approx. 21,957 square feet total - Tan River Rock 1-1/2", or owner approved equal.
 Rock Mulch 2 Beds: Approx. 8,498 square feet total - Mt. Granite or Bluestone 1-1/2", or owner approved equal.
 Cedar Mulch Beds: Approx. 1,241 square feet total - Cascade Cedar, or owner approved equal. Minimum 4" depth for all planting beds, planters, and tree rings within turf areas.
 Steel Edger: Approx. 1,202 linear feet - Rolled top, 14 gage, green painted Dura-edge, or approved equal.



REVISIONS

DESCRIPTION	DATE
OWNER CHANGES	2/16/15
SITE SUBMITTAL	3/11/15
FORM & COORDINATION	5/7/15
REG. ISLAND SUBMITTAL	5/21/15
REG. ISLANDS APPROVED	8/11/15

SELECT DEVELOPMENT & CONTRACTING, LLC
 860 EAST FRANKLIN ROAD, MERIDIAN, ID 83642

Boondocks
 From Greater
 CROWN POINT DEVELOPMENT
 PARKER, CO

COPYRIGHT 2015

Peter H. Rockwell, Architect
 Architecture • Planning • Interiors
 595 S. American Blvd. • Boise, Idaho 83702
 (208) 345-0566 • (208) 345-1718 • Fax: (208) 387-0689
 p.hrockwell@boisecc.com

SITE PLAN LANDSCAPE PLAN (PLANT LIST NOTES & DETAILS)

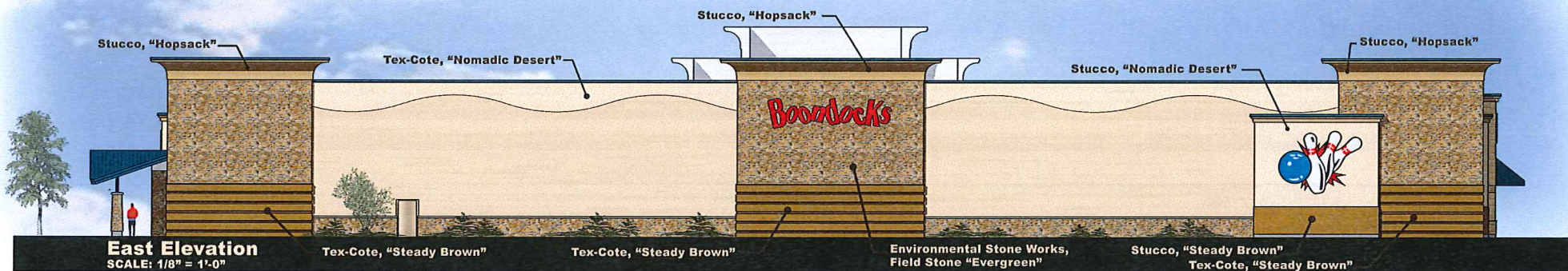
SHEET DATA
 DRAWN BY: KJS
 CHECKED BY: KJS
 SCALE: 1" = 20'
 DATE: 3/11/15
 PROJECT # 14001
 SHEET NUMBER

Prepared By: Kirby Smith & Associates, Inc.
 811
 CALL UTILITY NOTIFICATION CENTER OF COLORADO
 CALL 800-488-8848 BEFORE YOU DIG, GRADE, OR EXCAVATE FOR THE SAFETY OF UNDERGROUND UTILITY LINES.

L-3

APPROVED
 08.12.2015
 DATE

 PLANNER



REVISIONS	
DESCRIPTION	DATE
OWNER CHANGES	2/16/15
SITE SUBMITTAL	3/11/15

OWNER
SELECT DEVELOPMENT & CONTRACTING, LLC
 660 EAST FRANKLIN ROAD, MERIDIAN, ID 83642

PROJECT
Boondocks
 Iron Center
 CROWN POINT DEVELOPMENT
 PARKER, CO

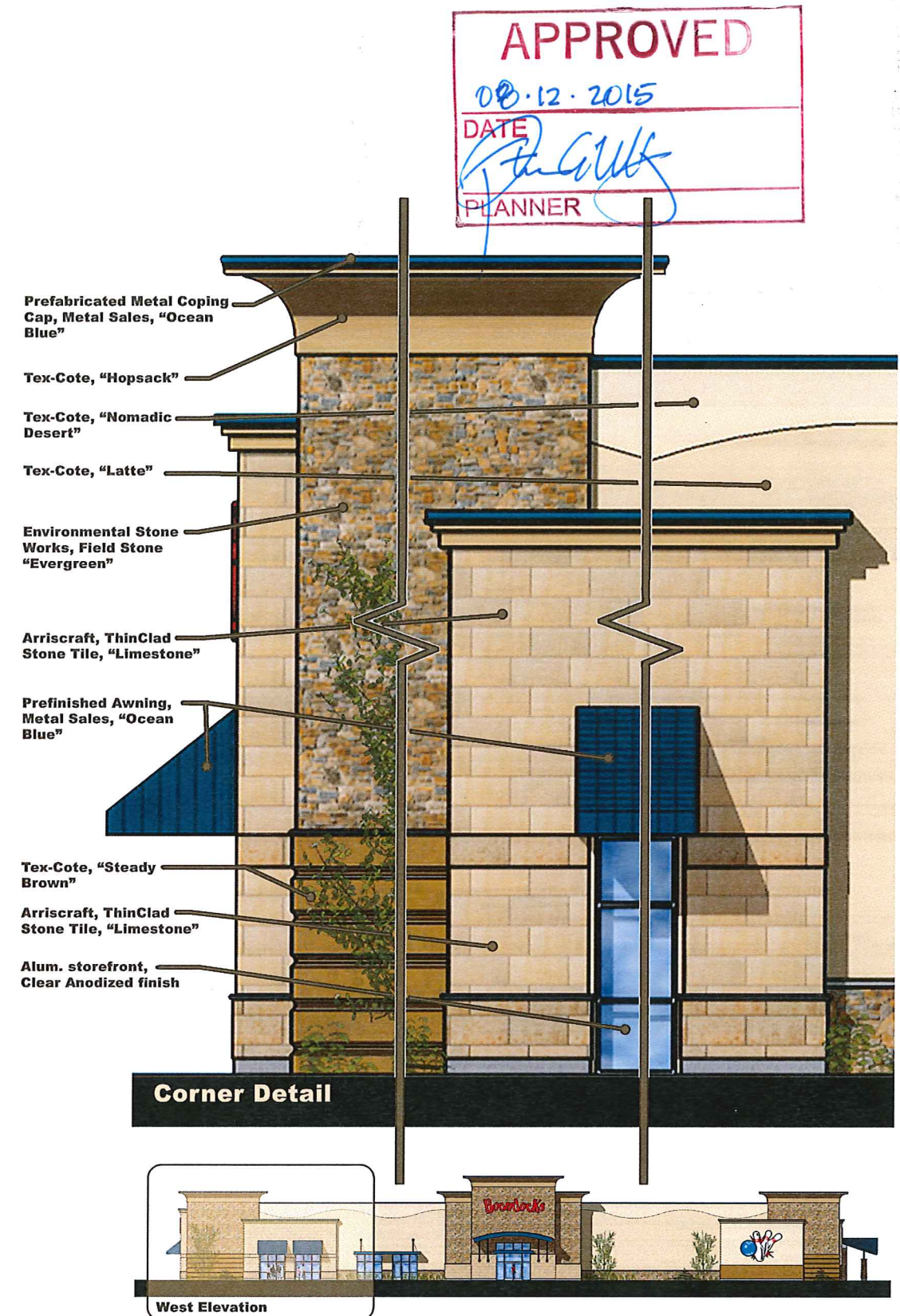
COPYRIGHT 2015

Peter H. Rockwell, Architect
 Architecture • Planning
 595 S Americana Boulevard Boise, Idaho 83702
 (208) 345-0566 (208) 345-1718 Fax (208) 387-0889
 office@pboise.com

50% CONSTRUCTION DOCUMENTS

SHEET DATA	
DESIGNED BY:	BE/DG
CHECKED BY:	PR
SCALE:	AS NOTED
DATE:	04.03.2015
PROJECT#:	14001

SHEET NUMBER
A-2.1



REVISIONS	
DESCRIPTION	DATE
OWNER CHANGES	2/16/15
SITE SUBMITTAL	3/11/15

OWNER
SLECT DEVELOPMENT & CONTRACTING, LLC
660 EAST FRANKLIN ROAD, MERIDIAN, ID 83642

PROJECT
Bowlz
Fun Center
CROWN POINT DEVELOPMENT
PARKER, CO

COPYRIGHT 2015

Peter H. Rockwell, Architect
Architecture • Planning
595 S Americana Boulevard Boise, Idaho 83702
(208) 345-0566 (208) 345-1718 Fax (208) 387-0889
office@grboise.com

50% CONSTRUCTION DOCUMENTS

SHEET DATA	
DRAWN BY:	BE/DG
CHECKED BY:	FR
SCALE:	AS NOTED
DATE:	04.03.2015
PROJECT#:	14001

SHEET NUMBER
A-2.2