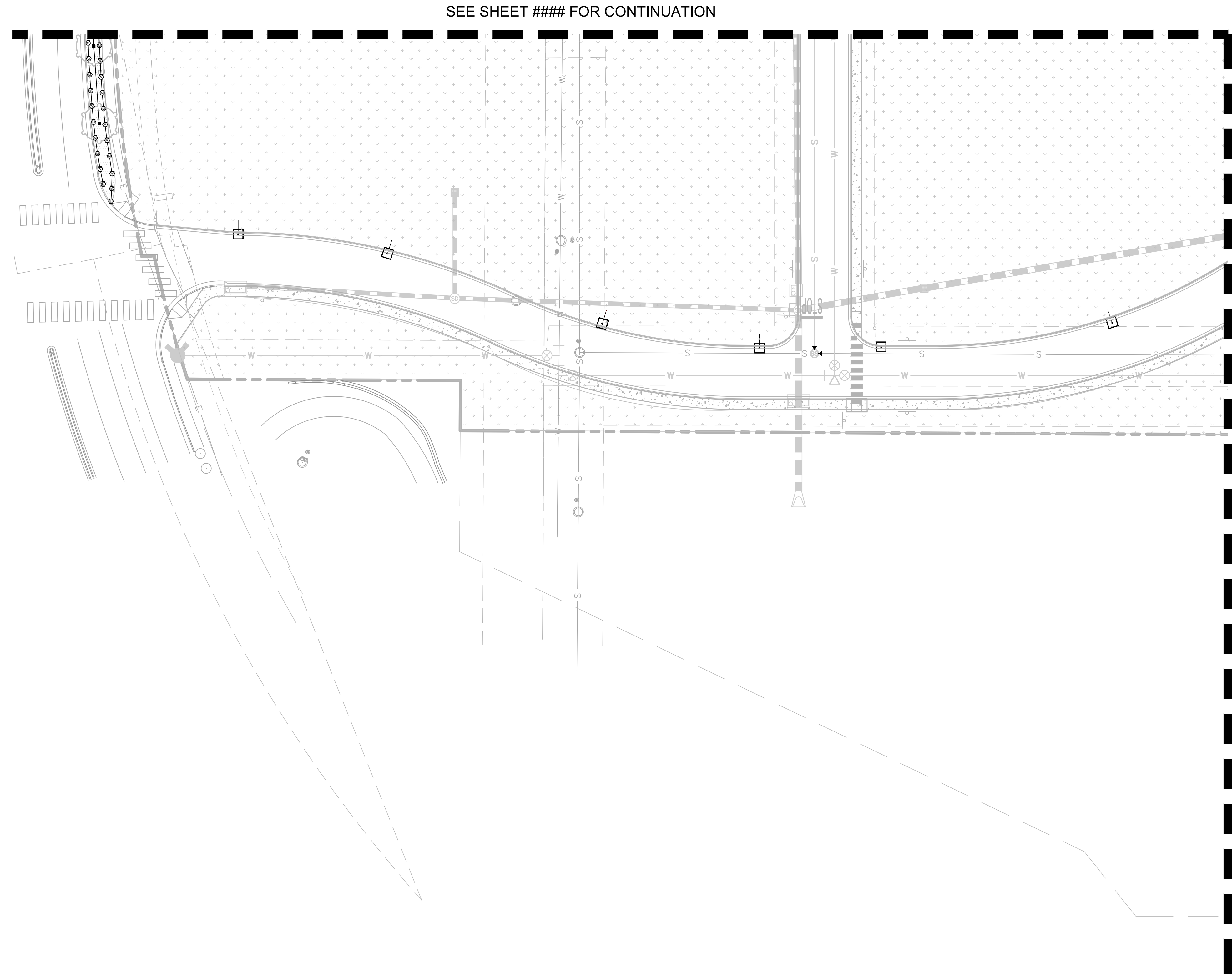
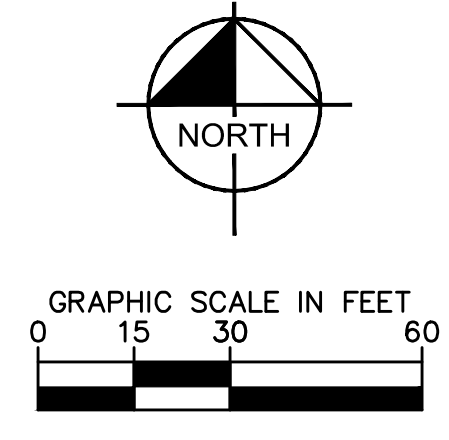


k:\den_civil\096502001 - mixed use parker rd\CADD\plansheets\096502001R.dwg, Miller, Tyler, 12/22/2016 10:29 AM
 THIS DOCUMENT, INCLUDING ANY INSTRUMENT OF SERVICE, IS THE PROPERTY OF KIMLEY-HORN AND ASSOCIATES, INC. AND IS TO BE USED ONLY FOR THE PROJECT AND SITE SPECIFIC PURPOSES AND NOT FOR ANY OTHER PROJECT OR PURPOSE. ANY REUSE OR MODIFICATION OF THIS DOCUMENT WITHOUT WRITTEN AUTHORIZATION AND SIGNATURE OF KIMLEY-HORN AND ASSOCIATES, INC. SHALL BE WITHOUT LIABILITY TO KIMLEY-HORN AND ASSOCIATES, INC.



SEE SHEET ##### FOR CONTINUATION

SEE SHEET L.1.3 FOR CONTINUATION



NO.	REVISION	BY	DATE	APPR.

Kimley»Horn
 2017 KIMLEY-HORN AND ASSOCIATES, INC.
 4582 South Ulster Street, Suite 1500
 Denver, Colorado 80237 (303) 228-2300

DESIGNED BY: DLS
 DRAWN BY: CTM
 CHECKED BY: DLS
 DATE: 8/17/17

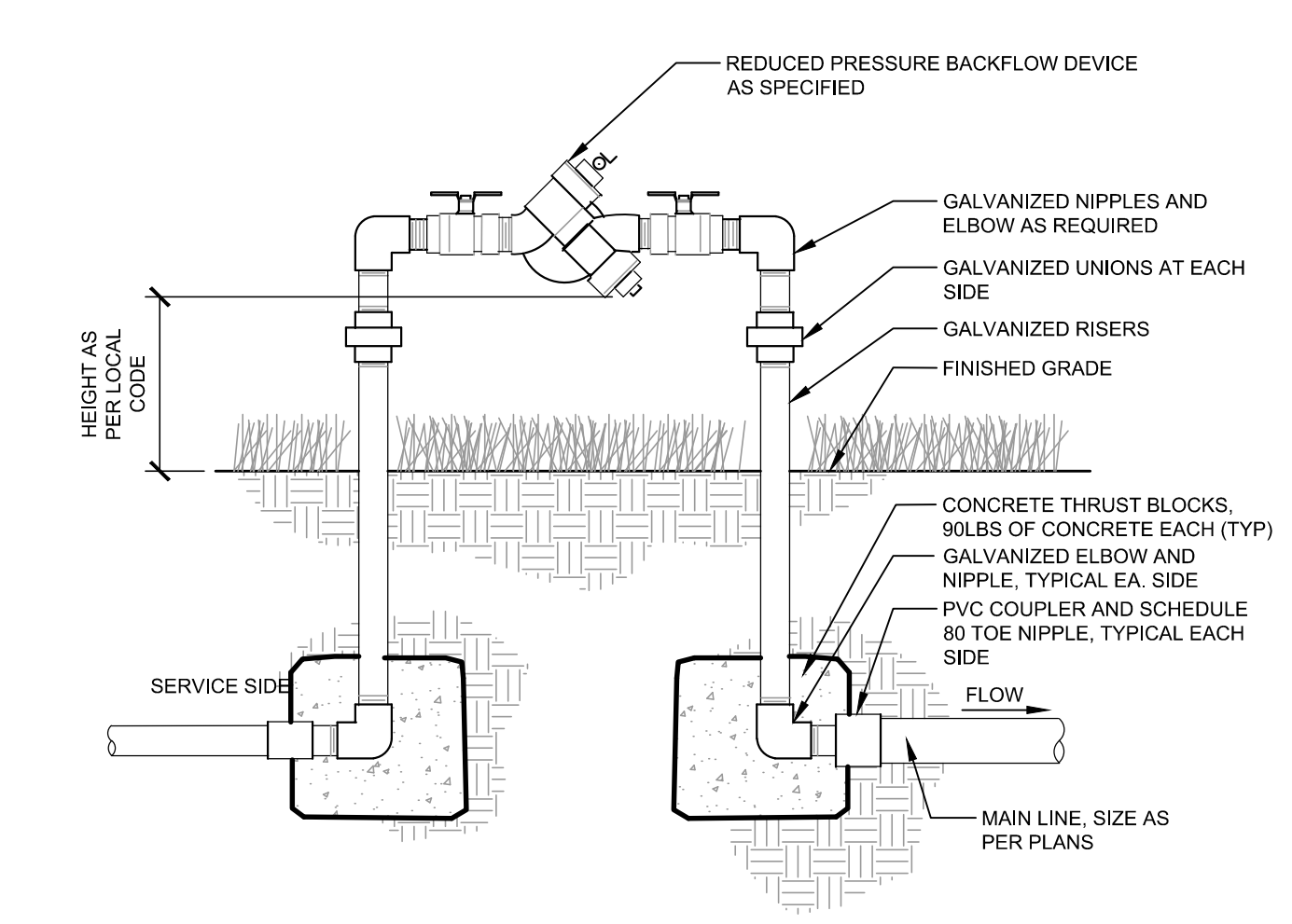
PARKER & PINE
 PARKER, CO
 CONSTRUCTION DOCUMENTS
 IRRIGATION PLAN

PRELIMINARY
 FOR REVIEW ONLY
 NOT FOR
 CONSTRUCTION
Kimley»Horn
 Kimley-Horn and Associates, Inc.

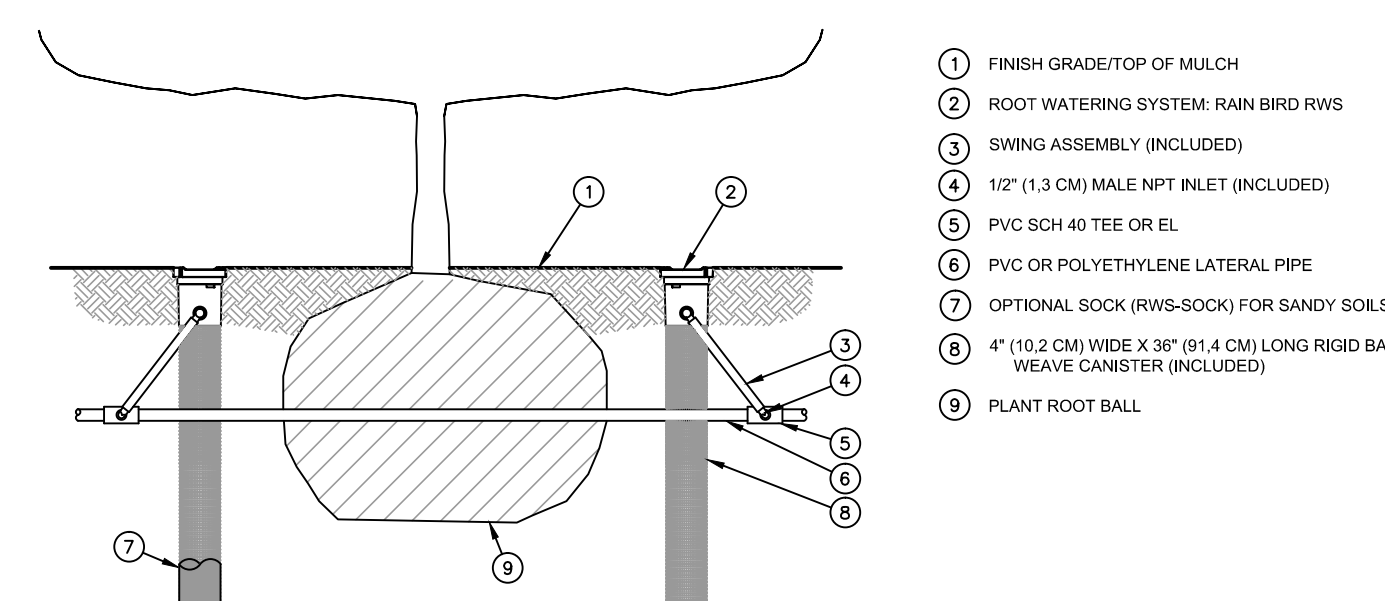
PROJECT NO.
 096502001
 DRAWING NAME
 096502001R

IR1.2

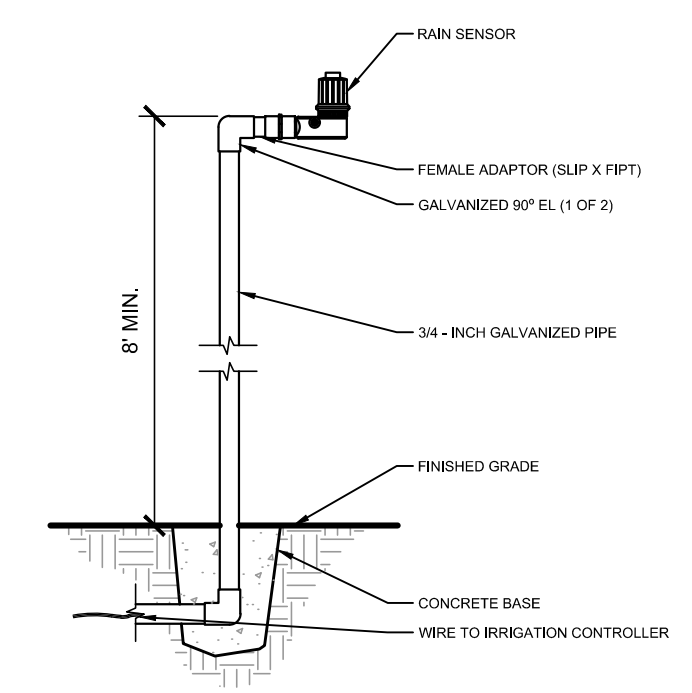
k:\den_civil\096502001 - mixed use parker rd\cadd\plansheets\096502001R.dwg Miller, Tyler 12/22/2016 10:29 AM
 3:00:00 PM 12/22/2016 10:29 AM 12/22/2016 10:29 AM 12/22/2016 10:29 AM 12/22/2016 10:29 AM 12/22/2016 10:29 AM
 ALL RIGHTS RESERVED. NO PART OF THIS DOCUMENT SHALL BE REPRODUCED OR TRANSMITTED IN ANY FORM OR BY ANY MEANS, ELECTRONIC OR MECHANICAL, INCLUDING PHOTOCOPYING, RECORDING, OR BY ANY INFORMATION STORAGE AND RETRIEVAL SYSTEM, WITHOUT PERMISSION IN WRITING FROM KIMLEY-HORN AND ASSOCIATES, INC.



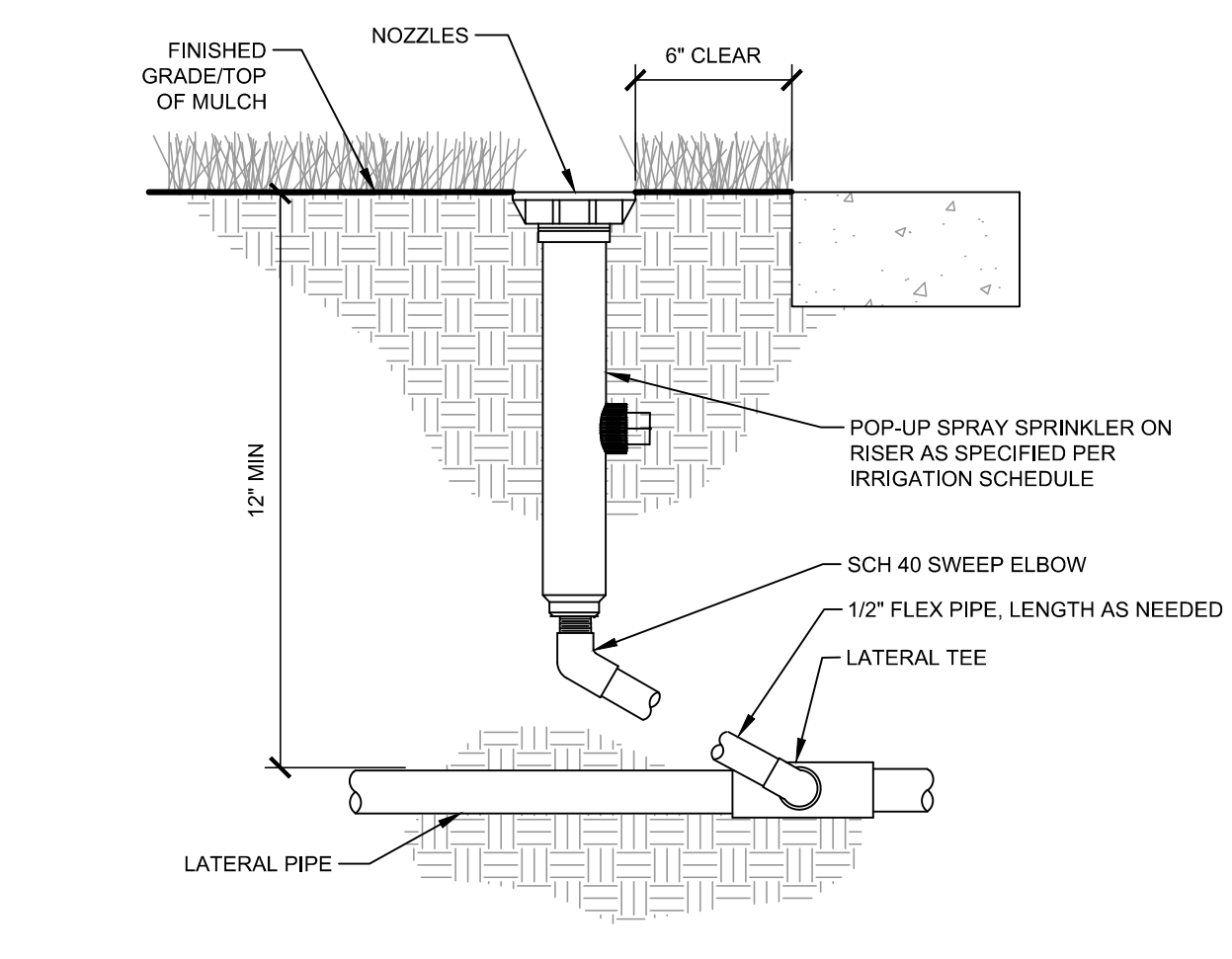
1 BACKFLOW PREVENTER
 IRI.5 SECTION NTS



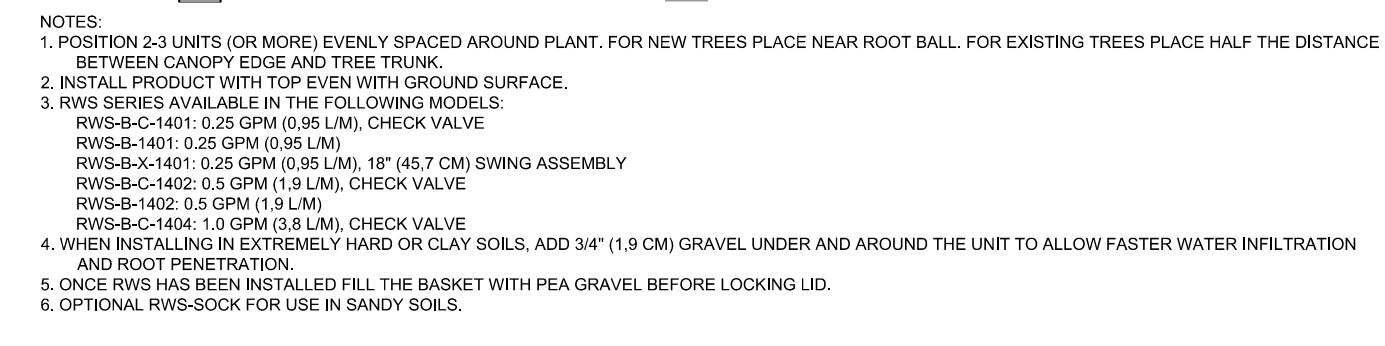
2 IRRIGATION CONTROLLER - PEDESTAL MOUNT
 IRI.5 SECTION NTS



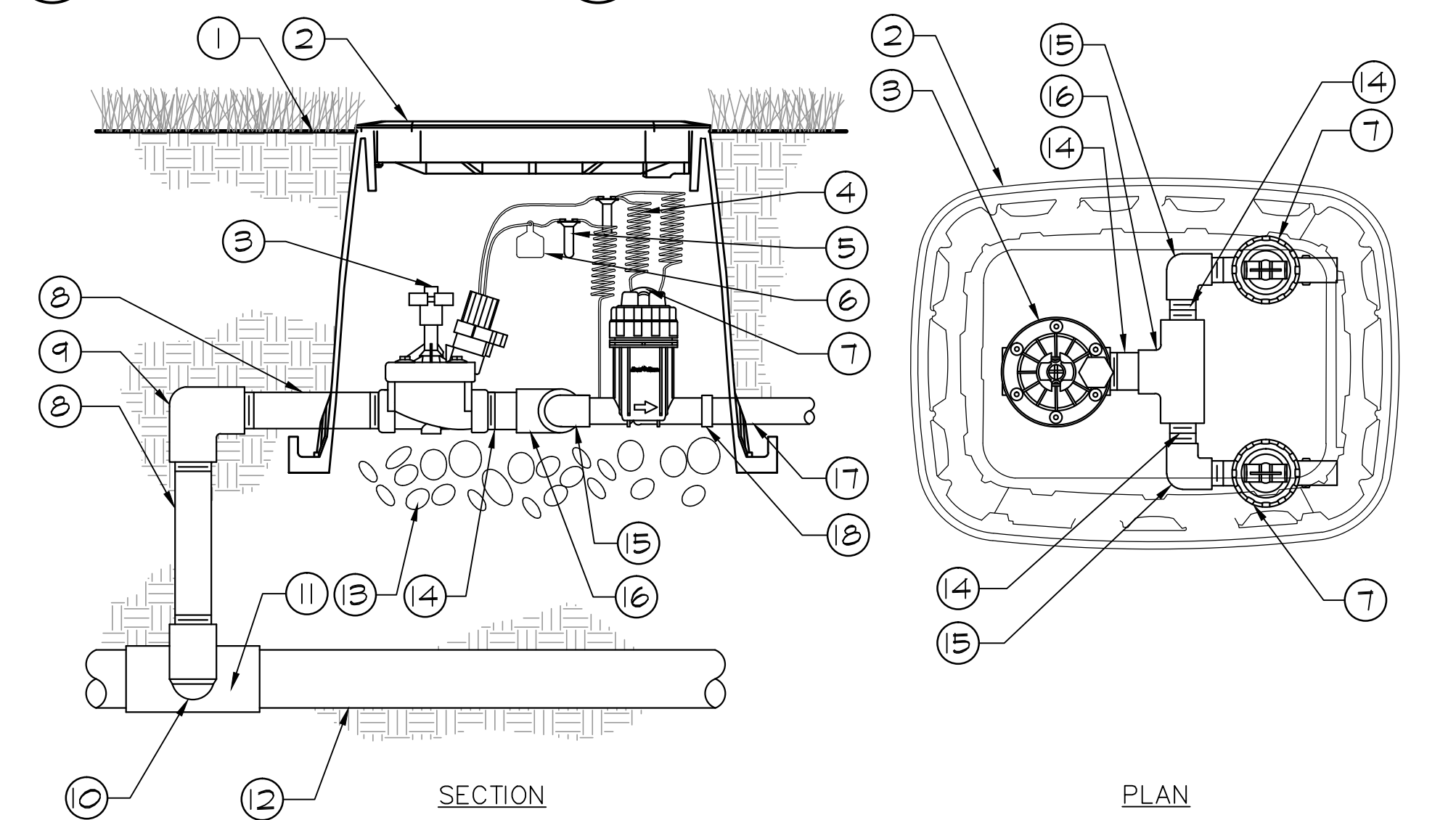
3 RAIN SENSOR - POLE MOUNT
 IRI.5 SECTION NTS



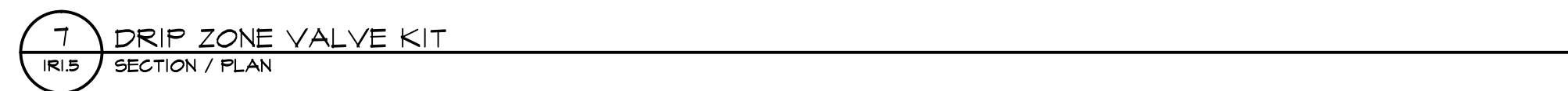
4 TYPICAL SPRAY / ROTAR HEAD
 IRI.5 SECTION NTS



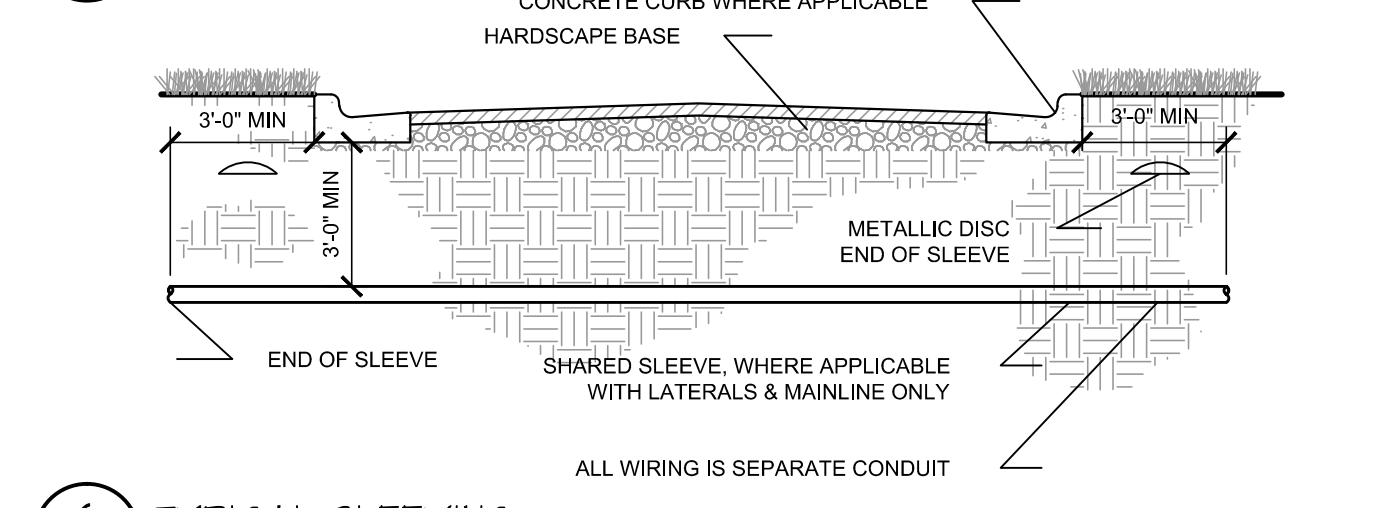
5 TYPICAL DRIPLINE
 IRI.5 PLAN NTS



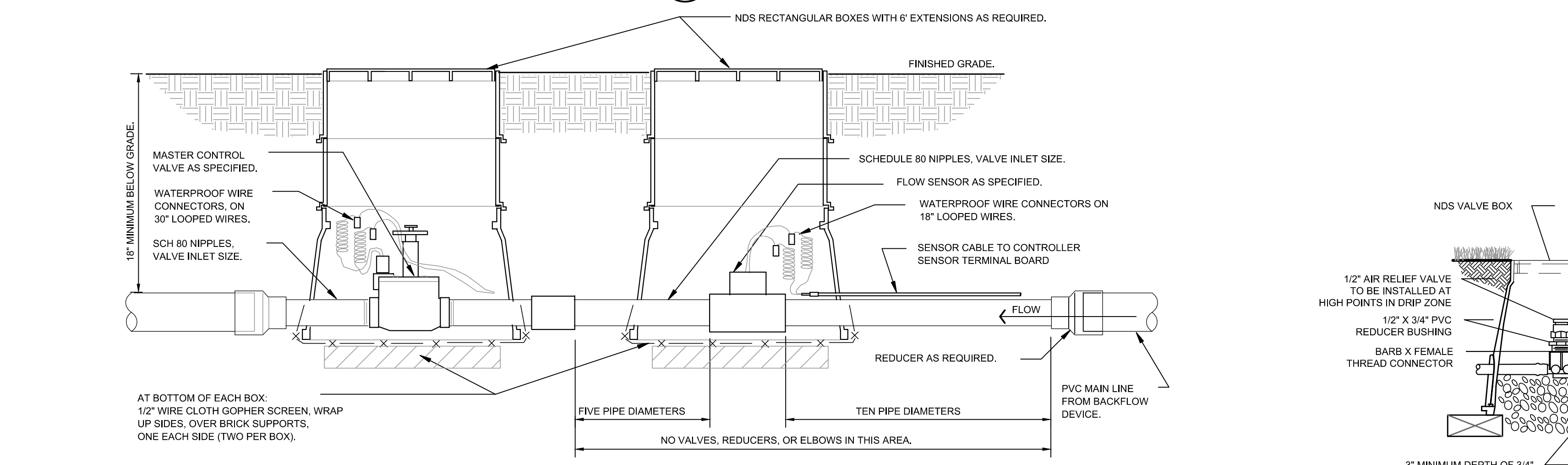
6 TYPICAL SLEEVE
 IRI.5 SECTION NTS



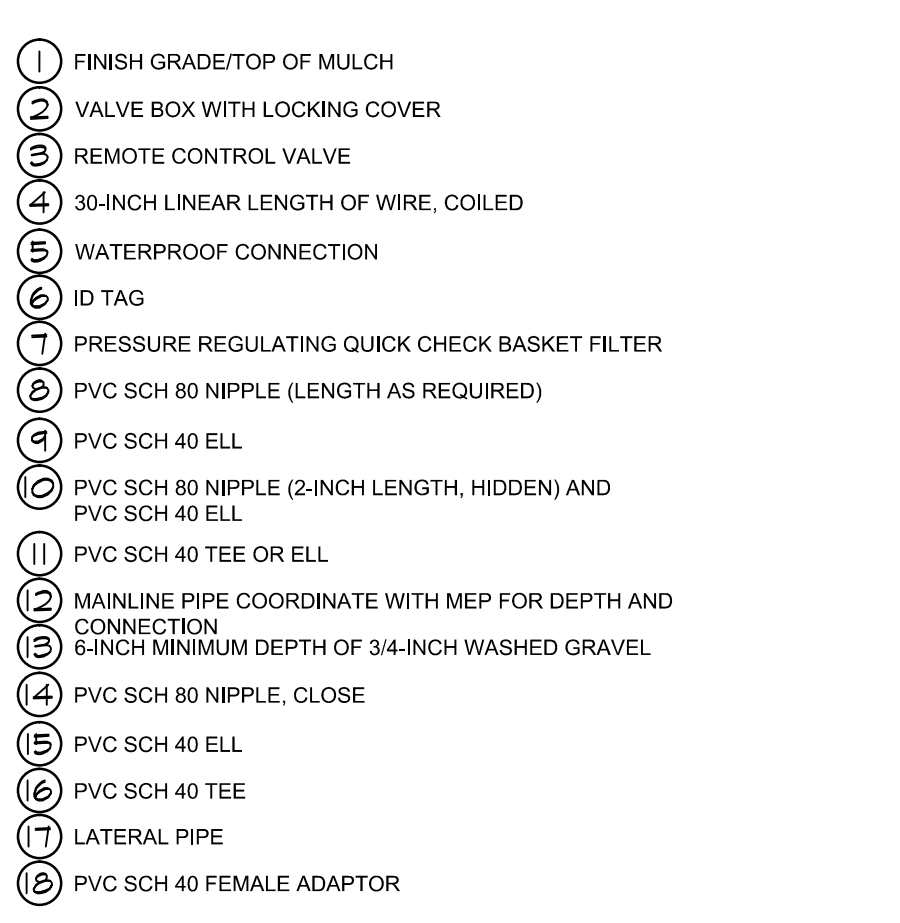
7 DRIP ZONE VALVE KIT
 IRI.5 SECTION / PLAN NTS



8 TYPICAL DRAIN VALVE
 IRI.5 SECTION NTS



9 MASTER CONTROL VALVE / FLOW SENSOR ASSEMBLY
 IRI.5 SECTION NTS



10 AIR RELIEF VALVE IN DRIPLINE
 IRI.5 SECTION NTS

NO.	REVISION	BY	DATE	APPR.

Kimley»Horn
 2017 KIMLEY-HORN AND ASSOCIATES, INC.
 4582 South Ulster Street, Suite 1500
 Denver, Colorado 80237 (303) 228-2300

DESIGNED BY: DLS
 DRAWN BY: CTM
 CHECKED BY: DLS
 DATE: 8/17/17

PARKER & PINE
 PARKER, CO
 CONSTRUCTION DOCUMENTS
 IRRIGATION DETAILS

PRELIMINARY
 FOR REVIEW ONLY
 NOT FOR
 CONSTRUCTION
Kimley»Horn
 Kimley-Horn and Associates, Inc.

PROJECT NO.
 096502001
 DRAWING NAME
 096502001R
 IR1.5