

# LOT 10 PARKER POINTE

LOT 10, PARKER POINTE FILING NO. 1  
 A PART SECTION 3, TOWNSHIP 7 SOUTH, RANGE 66 WEST OF THE SIXTH PRINCIPAL MERIDIAN  
 TOWN OF PARKER, COUNTY OF DOUGLAS, STATE OF COLORADO

## COVER SHEET

PAGE 1 OF 12



VICINITY MAP  
 SCALE: 1" = 500'



### SITE DATA TABLE

GROSS SITE AREA	51,998 SF	100%
BUILDING FOOTPRINT	7,200 SF	13.8%
PARKING/DRIVES	24,512 SF	47.2%
SIDEWALKS AND LANDSCAPING	20,286 SF	39.0%
PARKING		
TOTAL PROVIDED	58	
HANDICAP REQUIRED	3	
HANDICAP PROVIDED	4	
BICYCLE PARKING		
TOTAL REQUIRED	3 (1/20 PARKING STALLS)	
TOTAL PROVIDED	3	

APPROVED BY:

TOWN OF PARKER PLANNING DIRECTOR

TOWN OF PARKER PUBLIC WORKS DIRECTOR

TOWN OF PARKER BUILDING DEPARTMENT

TOWN OF PARKER POLICE DEPARTMENT

SOUTH METRO FIRE AND RESCUE AUTHORITY

PARKER WATER AND SANITATION DISTRICT

### SITE ZONING

TOWN OF PARKER - C

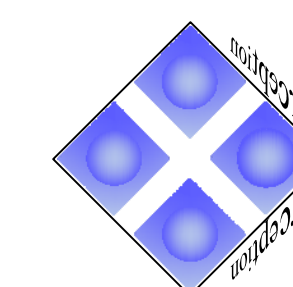
### DEVELOPER

PARKER & STROH, LLC  
 975 LINCOLN STREET, SUITE 204  
 DENVER, CO 80203  
 (303) 699-3368  
 CONTACT: DAN YACOVETTA

### SHEET INDEX

SHEET 1	COVER SHEET
SHEET 2	SITE PLAN
SHEET 3	GRADING PLAN
SHEET 4	UTILITY PLAN
SHEET 5	LANDSCAPE PLAN
SHEET 6	LANDSCAPE NOTES
SHEET 7	LANDSCAPE CONSTRUCTION DETAILS
SHEET 8	BUILDING ELEVATIONS
SHEET 9	BUILDING ELEVATION DETAILS
SHEET 10	PHOTOMETRIC PLAN
SHEET 11	LUMINAIRE CUT SHEETS
SHEET 12	LUMINAIRE CUT SHEETS

OCTOBER 18, 2017



Perception  
 Design Group, Inc.

Consulting Civil Engineers

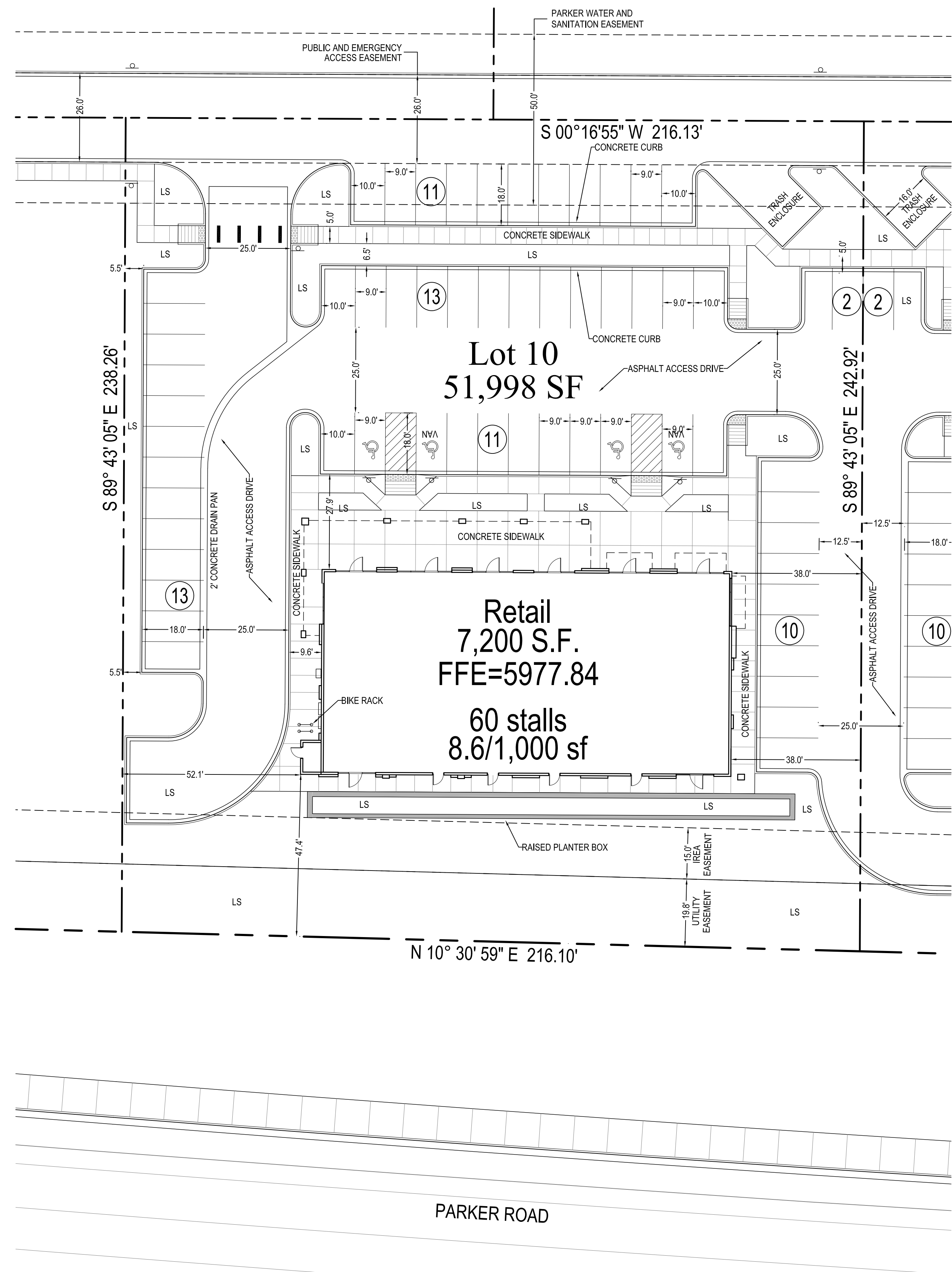
6901 South Pierce Street, Suite 315 Littleton, Colorado 80128  
 303-232-8088

# LOT 10 PARKER POINTE

LOT 10, PARKER POINTE FILING NO. 1  
 A PART SECTION 3, TOWNSHIP 7 SOUTH, RANGE 66 WEST OF THE SIXTH PRINCIPAL MERIDIAN  
 TOWN OF PARKER, COUNTY OF DOUGLAS, STATE OF COLORADO

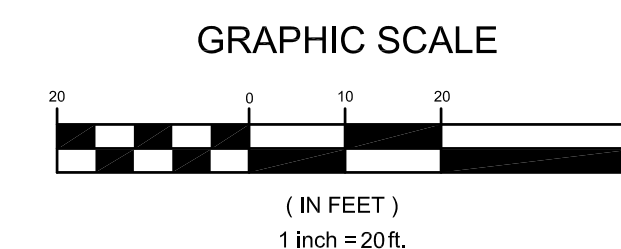
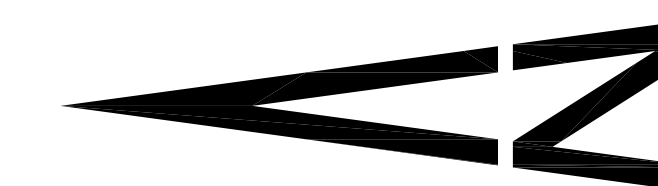
## SITE PLAN

PAGE 2 OF 12



### LEGEND

- PROPERTY LINE
- EXISTING CURB AND GUTTER
- PROPOSED CURB AND GUTTER
- PROPOSED SIDEWALK
- PROPOSED HANDICAP RAMP WITH DETECTABLE WARNING
- PROPOSED HEAVY-DUTY CONCRETE PAVEMENT
- PROPOSED HANDICAP PARKING STALL
- PROPOSED PARKING COUNT PER ROW
- PROPOSED LANDSCAPED AREA
- FIRE HYDRANT
- PROPOSED SITE SIGNAGE
- PROPOSED SITE LIGHTING
- EXISTING EASEMENT
- PROPOSED EASEMENT
- PROPOSED TRANSFORMER



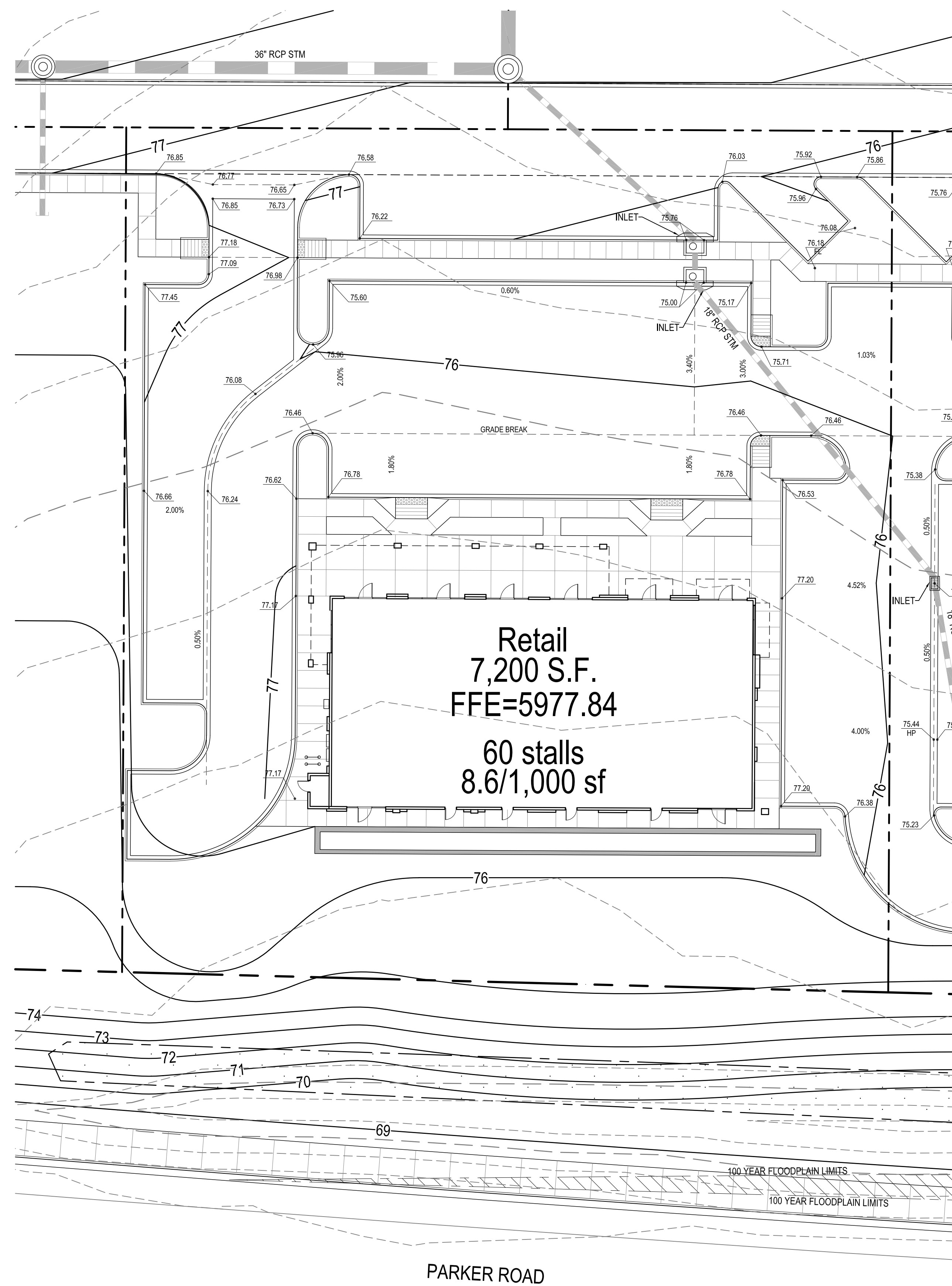
OCTOBER 18, 2017

# LOT 10 PARKER POINTE

LOT 10, PARKER POINTE FILING NO. 1  
A PART SECTION 3, TOWNSHIP 7 SOUTH, RANGE 66 WEST OF THE SIXTH PRINCIPAL MERIDIAN  
TOWN OF PARKER, COUNTY OF DOUGLAS, STATE OF COLORADO

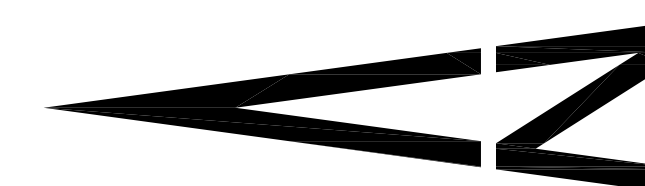
## GRADING PLAN

PAGE 3 OF 12

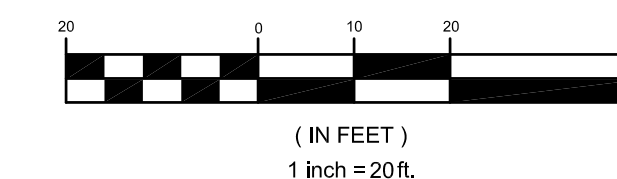


### LEGEND

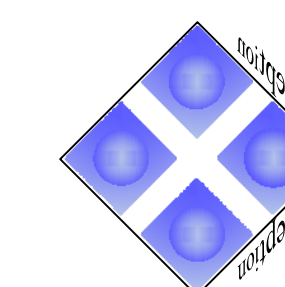
	PROPERTY LINE
	EXISTING CURB AND GUTTER
	PROPOSED CURB AND GUTTER
	PROPOSED SIDEWALK
	PROPOSED HANDICAP RAMP
	PROPOSED HEAVY-DUTY CONCRETE PAVEMENT
	EXISTING CONTOUR
	PROPOSED CONTOUR
	PROPOSED HIGH POINT
	PROPOSED LOW POINT
	PROPOSED SPOT ELEVATION
	PROPOSED RETAINING WALL
	PROPOSED FINISHED GRADE AT TOP OF WALL
	PROPOSED FINISHED GRADE AT BOTTOM OF WALL



GRAPHIC SCALE



OCTOBER 18, 2017



**Perception**  
Design Group, Inc.

Consulting Civil Engineers

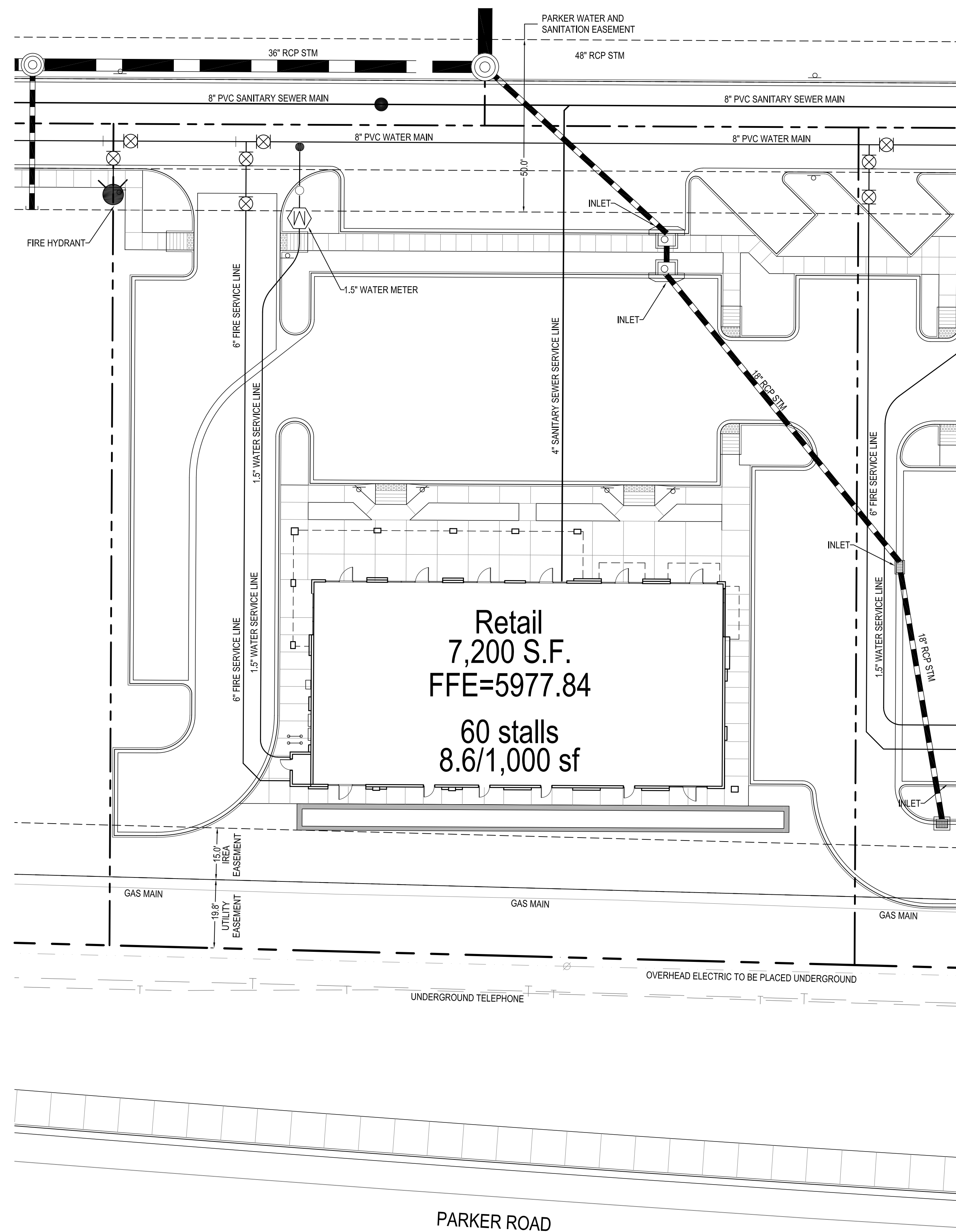
6901 South Pierce Street, Suite 315 • Littleton, Colorado 80128  
303-232-8088

# LOT 10 PARKER POINTE

LOT 10, PARKER POINTE FILING NO. 1  
 A PART SECTION 3, TOWNSHIP 7 SOUTH, RANGE 66 WEST OF THE SIXTH PRINCIPAL MERIDIAN  
 TOWN OF PARKER, COUNTY OF DOUGLAS, STATE OF COLORADO

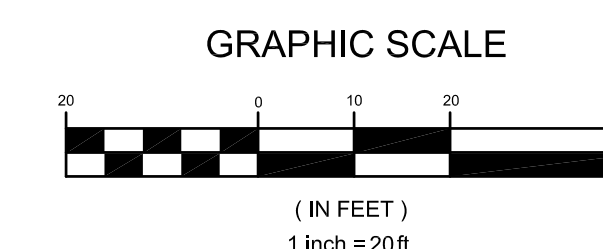
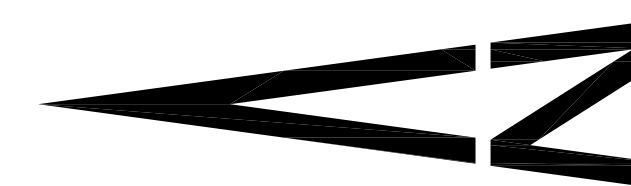
## UTILITY PLAN

PAGE 4 OF 12

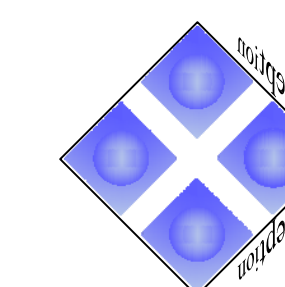


### LEGEND

- PROPERTY LINE
- 8"SS
- EXISTING WATERLINE W/ VALVE
- 4" SAN
- 8"WTR
- PROPOSED STORM SEWER
- EASEMENT
- PROPOSED SITE LIGHTING
- PROPOSED TRANSFORMER



OCTOBER 18, 2017



**Perception**  
 Design Group, Inc.

Consulting Civil Engineers

6901 South Pierce Street, Suite 315 Littleton, Colorado 80128  
 303-232-8088

# LOT 10 PARKER POINTE

LOT 10, PARKER POINTE FILING NO. 1  
 A PART SECTION 3, TOWNSHIP 7 SOUTH, RANGE 66 WEST OF THE SIXTH PRINCIPAL MERIDIAN  
 TOWN OF PARKER, COUNTY OF DOUGLAS, STATE OF COLORADO

## LANDSCAPE PLAN

PAGE 5 OF 12

### PLANT LIST - LOT 10

SYMBOL	QTY	ABBR	COMMON/BOTANICAL NAME	SIZE	HT. X SPD.	HYDROZONE	REMARKS
<b>OVERSTORY TREES</b>							
3 SL			SHADEMASTER LOCUST <i>Gleditsia triacanthos inermis</i> 'Shademaster'	2.0" CAL. B&B	50' X 35'	LOW	FULL CROWN, STAKED, SPECIMEN QUALITY
5 SW			SWAMP WHITE OAK <i>Quercus bicolor</i>	2.0" CAL. B&B	50' X 40'	LOW / MEDIUM	FULL CROWN, STAKED, SPECIMEN QUALITY
<b>ORNAMENTAL TREES</b>							
4 AB			AUTUMN BRILLIANCE SERVICEBERRY <i>Amerlanche x grandiflora</i> 'Autumn Brilliance'	1.5" CAL. B&B	18' X 10'	LOW / MEDIUM	FULL CROWN, STAKED, SPECIMEN QUALITY
3 GO			GAMBEL OAK <i>Quercus gambelii</i>	1.5" CAL. B&B	20' X 15'	LOW	FULL CROWN, STAKED, SPECIMEN QUALITY
<b>EVERGREEN TREES</b>							
1 BS			COLORADO BLUE SPRUCE <i>Picea pungens</i> var. <i>glauca</i>	6" HT. B&B	60' X 30'	LOW / MEDIUM	FULL CROWN, STAKED, SPECIMEN QUALITY
2 AP			AUSTRIAN PINE <i>Pinus nigra</i>	6" HT. B&B	50' X 25'	LOW	FULL CROWN, STAKED, SPECIMEN QUALITY
2 PP			PONDEROSA PINE <i>Pinus ponderosa</i>	6" HT. B&B	50' X 30'	LOW	FULL CROWN, STAKED, SPECIMEN QUALITY
<b>DECIDUOUS SHRUBS</b>							
8 PB			CRIMSON PYGMY BARBERRY <i>Berberis thunbergii</i> 'Atropurpurea Nana' (12"-15" HT.)	#5	2' X 3'	LOW / MEDIUM	SPACING PER PLAN FULL FORM
27 BM			BLUE MIST SPIREA <i>Caryopteris x clandonensis</i> (18"-24" HT.)	#5	3' X 3'	LOW	SPACING PER PLAN FULL FORM
19 DR			DWARF RABBITBRUSH <i>Chrysothamnus nauseosus</i> 'Dwarf Blue' (18"-24" HT.)	#5	4' X 4'	LOW	SPACING PER PLAN FULL FORM
5 SH			SUNBURST HYPERICUM <i>Hypericum frondosum</i> 'Sunburst' (12"-15" HT.)	#5	3' X 3'	LOW	SPACING PER PLAN FULL FORM
16 RS			RUSSIAN SAGE <i>Rhus trilobata</i> (18"-24" HT.)	#5	4' X 4'	LOW	SPACING PER PLAN FULL FORM
13 DN			LITTLE DEVIL NINEBARK <i>Physocarpus opulifolius</i> 'Donna May' (12"-15" HT.)	#5	4' X 4'	LOW	SPACING PER PLAN FULL FORM
24 PS			PAWNEE BUTTES SAND CHERRY <i>Prunus besseyi</i> 'Pawnee Buttes' (18" HT.)	#5	1.5' X 5'	LOW	SPACING PER PLAN FULL FORM
4 SD			WESTERN SAND CHERRY <i>Prunus besseyi</i> 'Western' (18"-24" HT.)	#5	5' X 5'	LOW	SPACING PER PLAN FULL FORM
15 GS			GRO-LOW SUMAC <i>Rhus aromatica</i> 'Gro-low' (12"-15" HT.)	#5	2' X 6'	LOW	SPACING PER PLAN FULL FORM
3 TS			THREE LEAF SUMAC <i>Rhus trilobata</i> (18"-24" HT.)	#5	4' X 4'	LOW	SPACING PER PLAN FULL FORM
2 PL			COMMON PURPLE LILAC <i>Syringa vulgaris</i> (18"-24" HT.)	#5	15' X 8'	LOW	SPACING PER PLAN FULL FORM
<b>EVERGREEN SHRUBS</b>							
4 KK			KINKIKINICK <i>Arctostaphylos uva-ursi</i> (12"-15" HT.)	#5	1' X 5'	LOW	SPACING PER PLAN FULL FORM
16 SB			SPANISH GOLD BROOM <i>Cytisus purgans</i> 'Spanish Gold' (18"-24" SPD.)	#5	4' X 4'	LOW	SPACING PER PLAN FULL FORM
43 CJ			BLUE CHIP JUNIPER <i>Juniperus horizontalis</i> 'Blue Chip' (8"-12" SPD.)	#5	1' X 5'	LOW	SPACING PER PLAN FULL FORM
5 SJ			SEA GREEN JUNIPER <i>Juniperus x media</i> (18"-24" HT.)	#5	8' X 5'	LOW	SPACING PER PLAN FULL FORM
9 BJ			BUFFALO JUNIPER <i>Juniperus sabinna</i> 'Buffalo' (8"-12" SPD.)	#5	1' X 5'	LOW	SPACING PER PLAN FULL FORM
14 OG			COMPACT OREGON GRAPE HOLLY <i>Mahonia aquifolium compacta</i> (12"-15" HT.)	#5	3' X 5'	LOW	SPACING PER PLAN FULL FORM
<b>ORNAMENTAL GRASSES</b>							
169 FG			FEATHER REED GRASS <i>Calamagrostis acutiflora</i> 'Karl Foerster' (ESTABLISHED)	#1	4.5' X 2'	LOW	SPACING PER PLAN FULL FORM
43 BG			BLUE AVENA GRASS <i>Helictotrichon sempervirens</i> (ESTABLISHED)	#1	1.75' X 2.5'	LOW	SPACING PER PLAN FULL FORM
52 MG			MAIDEN GRASS <i>Miscanthus sinensis</i> (ESTABLISHED)	#1	5' X 3'	LOW	SPACING PER PLAN FULL FORM
73 RW			RED SWITCH GRASS <i>Panicum virgatum</i> 'Shanadoah' (ESTABLISHED)	#1	3.5' X 2.5'	LOW	SPACING PER PLAN FULL FORM
31 OF			ORIENTAL FOUNTAIN GRASS <i>Pennisetum orientale</i> 'Karley Rose' (ESTABLISHED)	#1	2.5' X 2'	LOW	SPACING PER PLAN FULL FORM
<b>PERENNIALS / GROUND COVER</b>							
17 WR			WHITE CONEFLOWER <i>Echinacea purpurea</i> 'Alba'	#1	2.5' X 1.5'	LOW	SPACING PER PLAN FULL FORM
14 CT			WALKER'S LOW CATMINT <i>Nepeta faassenii</i> 'Walker's Low'	#1	2' X 2'	LOW	SPACING PER PLAN FULL FORM
15 MS			MOJAVE SAGE <i>Salvia pachyphylla</i>	#1	3' X 3'	LOW	SPACING PER PLAN FULL FORM
20 AJ			AUTUMN JOY SEDUM <i>Sedum spectabile</i> 'Autumn Joy'	#1	2' X 1'	LOW	SPACING PER PLAN FULL FORM
<b>MULCH</b>							
			COLOR/MATERIAL: -ROCK MULCH				
			AREA: -8,643 SF				
			TYPE: -1"-4" DIA. MULTI-COLOR ROCK MULCH WITH DOUBLE SHREDDED BARK MULCH RINGS (4" THICK). SEE LANDSCAPE NOTES.				
			COLOR/MATERIAL: -WOOD MULCH				
			AREA: -699 SF				
			TYPE: -4" THICK OF DOUBLE SHREDDED BARK MULCH				
			STEEL EDGING - 375 LF				
			12 GRANITE BOULDERS 24"-48" DIA. SIZE				

SYMBOL	QTY	ABBR	COMMON/BOTANICAL NAME	SIZE	HT. X SPD.	HYDROZONE	REMARKS
<b>ANNUALS (PLANTER POTS AND OWNER SPECIFIED AREAS ONLY - MAY INCLUDE BUT NOT LIMITED TO)</b>							
699 SF			SNAP DRAGONS <i>Antirrhinum majus</i>	#1	3' X 1'	LOW	SPACING PER PLAN FULL FORM
			COSMOS <i>Cosmos bipinnatus</i>	#1	3' X 1'	LOW	SPACING PER PLAN FULL FORM
			GLOBE AMARANTH <i>Gomphrena globosa</i>	#1	1.5' X 1.5'	LOW	SPACING PER PLAN FULL FORM
			BLACK MONDO GRASS <i>Ophiopogon planiscapus</i> 'Nigrescens'	#1	1' X 1'	LOW	SPACING PER PLAN FULL FORM
			PURPLE FOUNTAIN GRASS <i>Pennisetum setaceum</i> 'Rubrum'	#1	3' X 2'	LOW	SPACING PER PLAN FULL FORM
			CLARY SAGE <i>Salvia sclarea</i>	#1	3' X 2'	LOW	SPACING PER PLAN FULL FORM
			NASTURTIUM <i>Tropaeolum majus</i> 'Alaska'	#1	1' X 1'	LOW	SPACING PER PLAN FULL FORM
<b>NATIVE SEED</b>							
3,560 SF			NATIVE SEED MIX			GRASS SEED	SEE SEED NOTES

### LANDSCAPE DATA - LOTS 10

ON-SITE	REQUIRE	PROVIDED
LOT AREA: 51,999 SF		
LANDSCAPE AREA REQUIRED (MIN 15%): 7,800 SF (15.0%)		
TOTAL LANDSCAPE AREA PROPOSED: 12,902 SF (24.8%)		

VEGETATION REQUIRED:

DESCRIPTION	AREA	REQUIRED	PROVIDED
TREES	22,394'	15 (1/1,500)	20
SHRUBS	22,394'	75 (5/1,500)	224

\*51,999 LOT - 7,200 BLDG SF - 22,405 SF REQUIRED PARKING (PARKING STALLS & CIRCULATION AISLES WITH PARKING STALL ACCESS)

DIVERSITY: A MINIMUM OF TWENTY-FIVE PERCENT (25%) AND A MAXIMUM OF FIFTY PERCENT (50%) SHALL BE EVERGREEN TREES:

DESCRIPTION	EVERGREEN	DECIDUOUS	PROVIDED
TREES	5	15	25%

LANDSCAPE COVERAGE:

DESCRIPTION	AREA	REQUIRED	PROVIDED
MINIMUM LANDSCAPE COVERAGE (MIN 75%):	9,676 SF (75.0%)		
LANDSCAPE AREA COVERAGE PROPOSED:	11,186 SF (86.7%)		

\*INCLUDES PLANTING BED SF, EVERGREEN TREES, UTILITY EQUIPMENT, BOULDERS AND OPEN ROCK MULCH AREAS

STREETSCAPE LANDSCAPING:

DESCRIPTION	AREA	REQUIRED	PROVIDED
EASTERN PRIVATE RD.	190 LF	5 TREES (1/40)	5 TREES

SITE PERIMETER LANDSCAPING:

DESCRIPTION	AREA	REQUIRED	PROVIDED
SOUTH EDGE	50 LF	2 TREES (1/40), 7 SHRUBS (5/40)	2 TREES, 15 SHRUBS
WEST EDGE	216 LF	6 TREES (1/40), 27 SHRUBS (5/40)	6 TREES, 76 SHRUBS
NORTH EDGE	233 LF	6 TREES (1/40), 29 SHRUBS (5/40)	5 TREES, 39 SHRUBS

NOTE: NO TURF GRASS IS PROPOSED WITHIN THE PROJECT LIMITS.

### TOWN SIGNATURE BLOCK

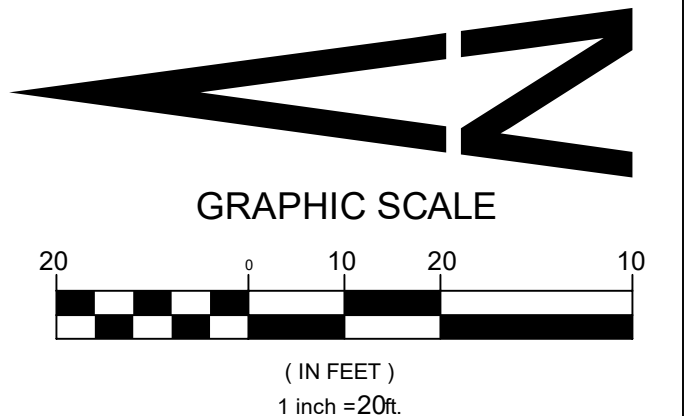
THE TOWN OF PARKER REVIEW CONSTITUTES GENERAL COMPLIANCE WITH THE TOWN'S STANDARDS AND APPROVED VARIANCES, SUBJECT TO THESE PLANS BEING STAMPED, SIGNED, AND DATED BY THE PROFESSIONAL ENGINEER OF RECORD. REVIEW BY THE TOWN DOES NOT CONSTITUTE APPROVAL OF THE PLAN DESIGN OR ACCURACY AND CORRECTNESS OF ENGINEER CALCULATIONS. ERRORS IN THE DESIGN OR CALCULATIONS REMAIN THE RESPONSIBILITY OF THE REGISTERED PROFESSIONAL ENGINEER WHOSE STAMP AND SIGNATURE ARE AFFIXED TO THIS DOCUMENT.

THIS REVIEW DOES NOT CONSTITUTE APPROVAL OF ANY PRIVATE ON-SITE IMPROVEMENTS WHICH MAY BE SHOWN. CONSTRUCTION CANNOT COMMENCE UNTIL ALL REQUIRED DRAINAGE/TRAFFIC REPORT(S), FINAL DEVELOPMENT PLAN(S), SPECIAL REVIEW(S), GRADING PERMIT, AND/OR OTHER PERMITS ARE COMPLETE, APPROVED, AND ON FILE WITH THE TOWN OF PARKER.

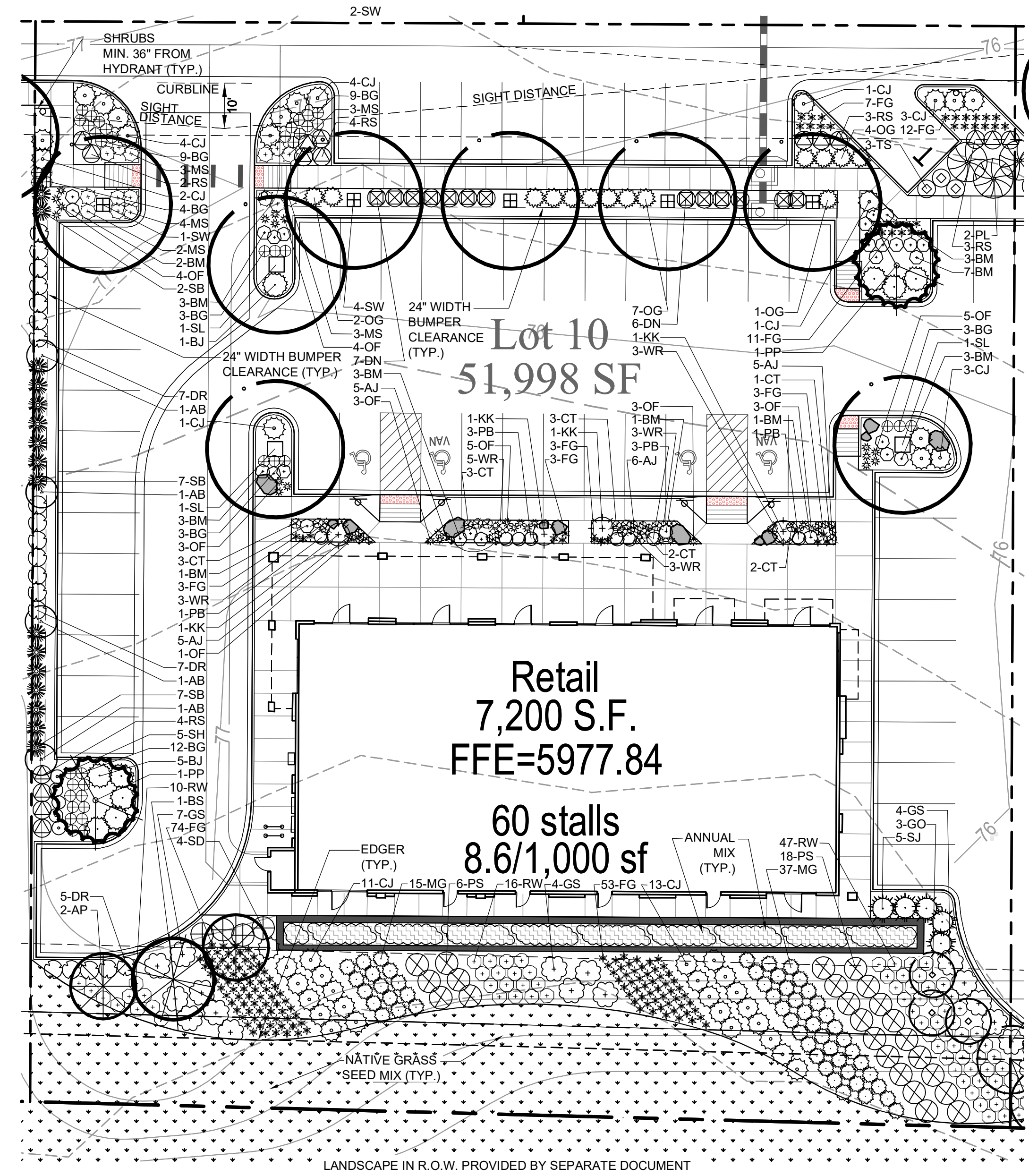
TOWN OF PARKER, PUBLIC WORKS DIRECTOR \_\_\_\_\_ DATE \_\_\_\_\_

TOWN OF PARKER, PUBLIC WORKS MANAGER - STORMWATER \_\_\_\_\_ DATE \_\_\_\_\_

TOWN OF PARKER, PUBLIC WORKS MANAGER, TRANSPORTATION \_\_\_\_\_ DATE \_\_\_\_\_



OCTOBER 20, 2017



### LANDSCAPING ACKNOWLEDGEMENT

NO SUBSTANTIAL CHANGE FROM THE APPROVED LANDSCAPE PLAN MAY OCCUR WITHOUT PRIOR REVIEW OF THE PARKER WATER AND SANITATION DISTRICT, WHICH MAY REQUIRE ADDITIONAL IRRIGATION TAPS FOR CHANGES DUE TO MORE WATER INTENSIVE LANDSCAPING.

APPLICANT AND/OR OWNER \_\_\_\_\_ DATE \_\_\_\_\_

### CAUTION - NOTICE TO CONTRACTOR

- ALL UTILITY LOCATIONS SHOWN ARE BASED ON MAPS PROVIDED BY THE APPROPRIATE UTILITY COMPANY AND FIELD SURFACE EVIDENCE AT THE TIME OF SURVEY AND IS TO BE CONSIDERED AN APPROXIMATE LOCATION ONLY. IT IS THE CONTRACTOR'S RESPONSIBILITY TO FIELD VERIFY THE FIELD LOCATION OF ALL UTILITIES, PUBLIC OR PRIVATE, WHETHER SHOWN ON THE PLANS OR NOT, PRIOR TO CONSTRUCTION. REPORT ANY DISCREPANCIES TO THE ENGINEER PRIOR TO CONSTRUCTION.
- WHERE A PROPOSED UTILITY CROSSES AN EXISTING UTILITY, IT IS THE CONTRACTOR'S RESPONSIBILITY TO FIELD VERIFY THE HORIZONTAL AND VERTICAL LOCATION OF SUCH EXISTING UTILITY, EITHER THROUGH POT-HOLING OR ALTERNATIVE METHOD. REPORT INFORMATION TO THE ENGINEER PRIOR TO CONSTRUCTION.



PREPARED UNDER THE DIRECT SUPERVISION OF JOSEPH L. WILSON, C.D., P.E., COLORADO REGISTRATION LA-304 FOR & ON BEHALF OF STERLING DESIGN ASSOCIATES, LLC

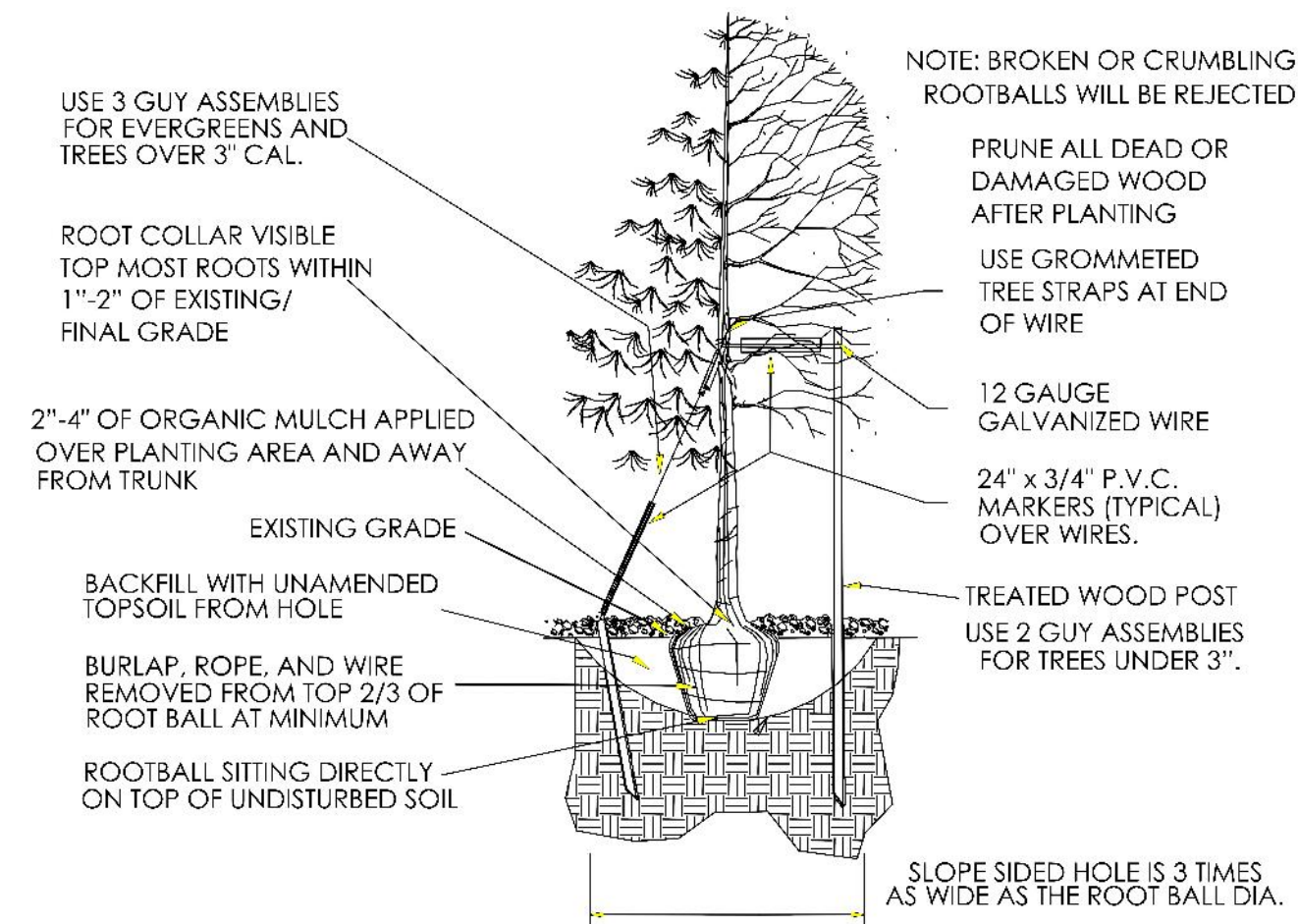
# LOT 10 PARKER POINTE

LOT 10, PARKER POINTE FILING NO. 1  
 A PART SECTION 3, TOWNSHIP 7 SOUTH, RANGE 66 WEST OF THE SIXTH PRINCIPAL MERIDIAN  
 TOWN OF PARKER, COUNTY OF DOUGLAS, STATE OF COLORADO

## LANDSCAPE DETAILS

PAGE 6 OF 12

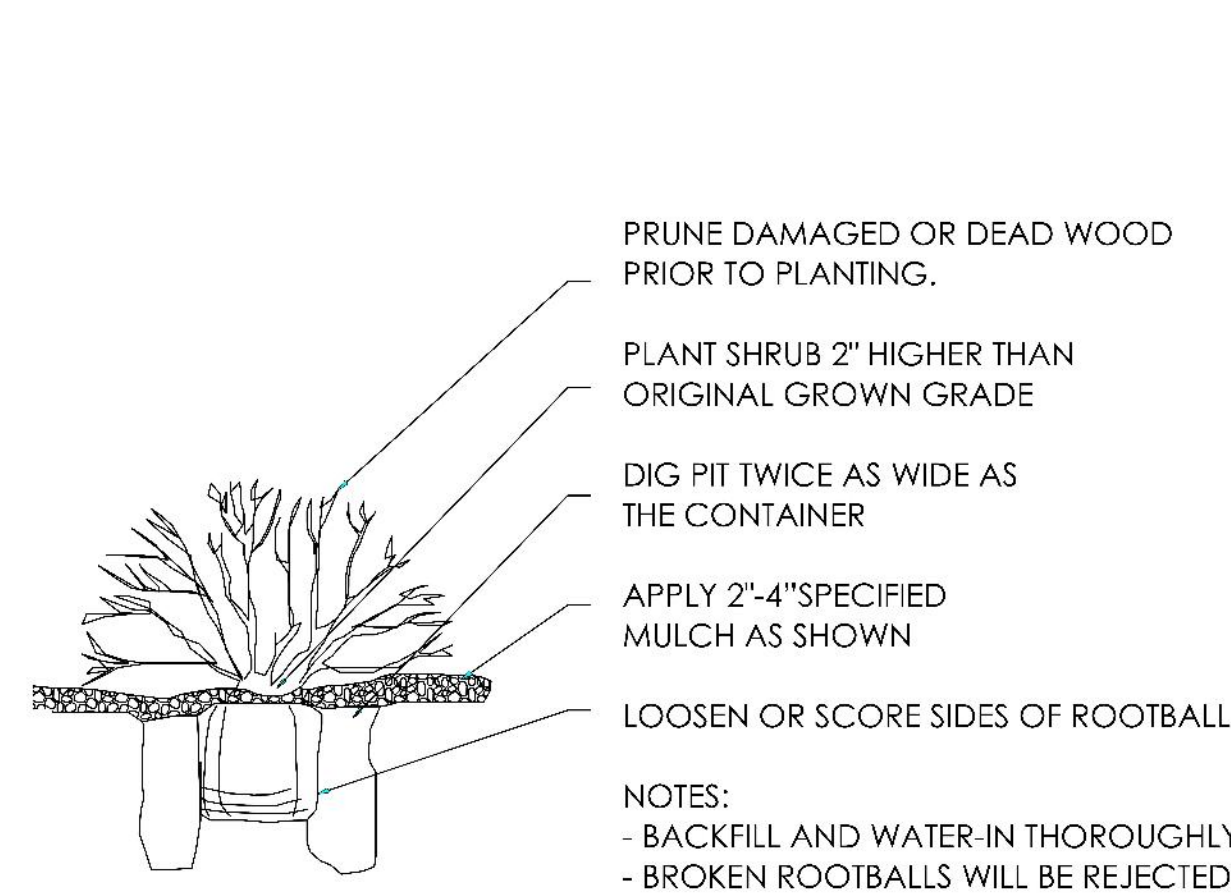
### TOWN OF PARKER PLANTING STANDARDS



- Excavate planting holes with sloping sides. Make excavations at least three times as wide as the root ball diameter and no deeper than the distance from the top most roots in the root ball to the bottom of the root ball to allow for settling. Do not disturb soil at bottom of planting holes, but do score the sides of the planting hole. The planting area shall be loosened and aerated at least three times the diameter of the root ball. Backfill shall consist of existing on site topsoil - no amendments shall be used unless otherwise specified.
- Trees shall be planted with the root collar/lane visible above grade AND two or more structural roots located within the top 1" to 2" of the root ball/finished grade measured 3" to 4" from trunk. This includes trees that are set on slopes (see slope planting detail). Trees that do not have a visible root collar shall be rejected. Do not cover the root ball with soil.
- When root ball will remain intact, cut off bottom 1/4 of wire basket before placing tree in hole, cut off remainder of basket AFTER tree is set in hole, remove basket completely. At a minimum, the top 2/3 of the burlap and basket shall be removed from the root ball on all trees. Remove all nylon ties, twine, rope and burlap. Remove unnecessary packing material.
- Form soil into a 3" to 5" tall watering ring (saucer) around planting area. This is not necessary in irrigated turf areas. Apply 2" to 4" depth of specified mulch over planting area and inside saucers, away from trunk.
- Staking and guying of trees is optional in most planting situations. In areas of extreme winds, or on steep slopes, staking may be required to stabilize trees. Staking and guying must be removed within 1 year of planting date.
- Tree wrap is *not* to be used on any new plantings, except in late fall planting situations, and only then after consultation with the Town Arborist.
- Resetting of improperly planted trees will only be allowed if it is determined that doing so will in no way compromise the root ball, and shall only be done with approval of the Town Arborist.

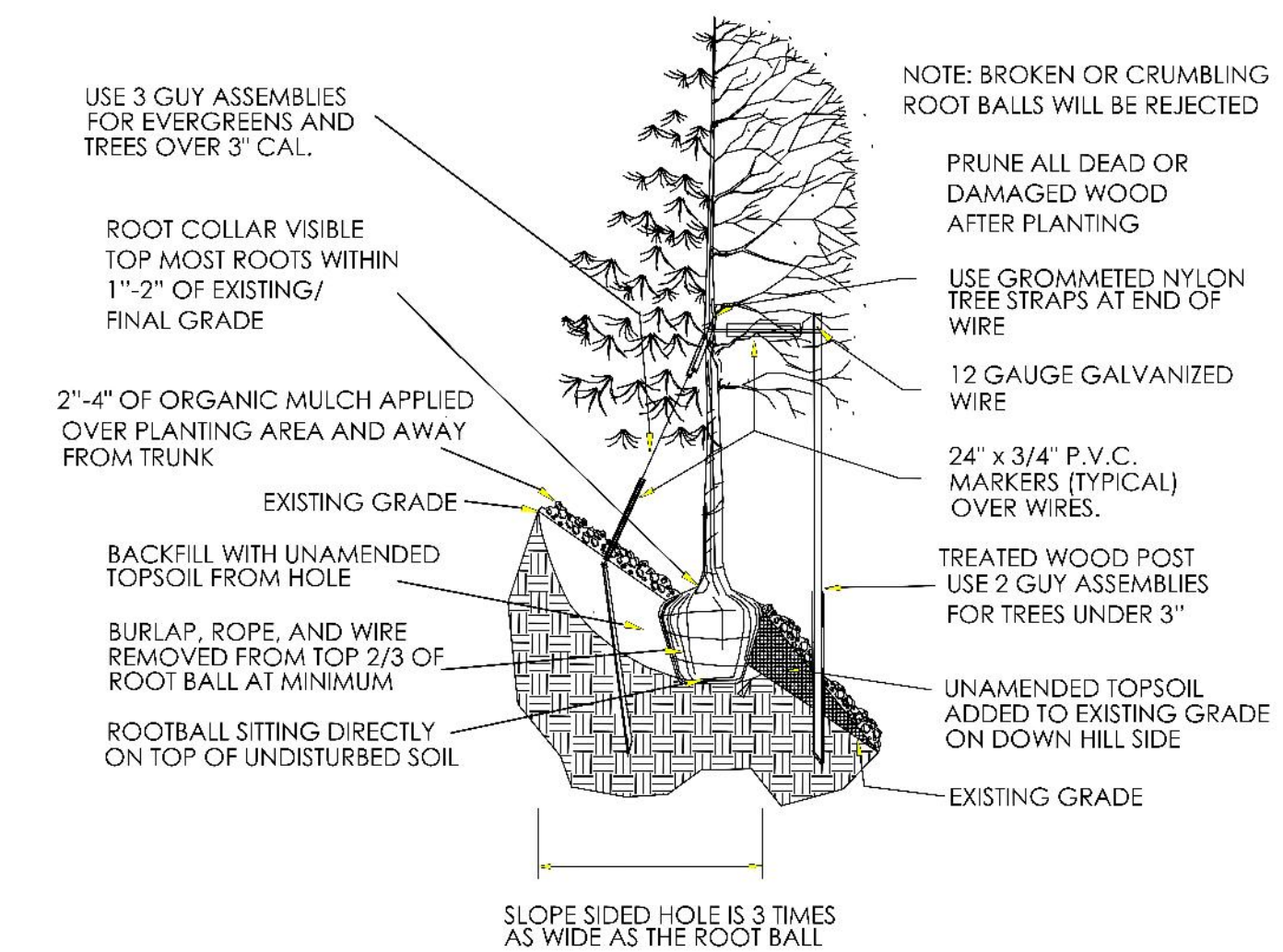
### TOWN OF PARKER PLANTING STANDARDS

#### TOWN OF PARKER PLANTING DETAIL - SHRUBS



### TOWN OF PARKER PLANTING STANDARDS

#### TOWN OF PARKER TREE PLANTING DETAIL - SLOPES



### TOWN OF PARKER WATER TAP WORKSHEET



#### Landscape/Irrigation Worksheet

Project Name: Parker and Stroh Site Lot 10

Landscape/Irrigation Tap address (physical location of tap) SE Corner of S. Parker and Stroh Road

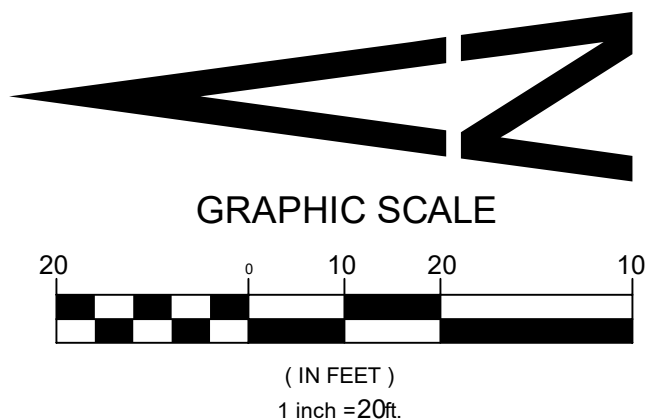
Landscape Area	High Water TURF (6,000sf = 1 SFE)	Low Water Native Grass and Perennials (10,000sf = 1 SFE)	Spray Shrubs & Drip Irrigated (20,000sf = 1 SFE)	Sub-Total of Non-Irrigated area (calculated) Areas	PWSD one SFE per 6000	SFE Requirement (Sub-Total Calculation divided by 6000 = requirement)
12,902 sf total						
Area #1	0 sf x 1 = 0	0 sf x .6 = 0	9,342 sf x .3 = 2,803	3,560 sf x 0 = 0	2,803 sf	6,000
						0.5 SFE's

Worksheet Completed by: Joseph L. Wilson, PLA, CID  
 Company: Sterling Design Associates, LLC  
 Address: 2009 W. Littleton Blvd. #300, Littleton, CO 80120  
 Phone #: 303-794-4727 ext 207

Owner/Developer: Dan Yacovetta  
 Attn: ----  
 Billing Address: ----  
 Phone #: ----

Manufacturer	ET Controller (with Rain Sensor)
Model number	HUNTER I-CORE W/ SOLAR-SYNC IC-4200-M/SOLAR-SYNC-SEN

Tap Size Requirements:  
 0 - 1 SFE's requires a 3/4-inch tap  
 1.1 - 2.0 SFE's requires a 1-inch tap  
 2.1 - 4.0 SFE's requires a 1 1/2-inch tap  
 4.1 - 7.0 SFE's requires a 2-inch tap  
 7.1 - 16.0 SFE's requires a 3-inch tap



OCTOBER 20, 2017



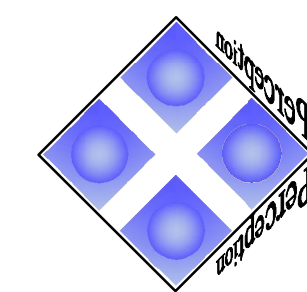
Know what's Below.  
 Call before you dig.

#### CAUTION - NOTICE TO CONTRACTOR

- ALL UTILITY LOCATIONS SHOWN ARE BASED ON MAPS PROVIDED BY THE APPROPRIATE UTILITY COMPANY AND FIELD SURFACE EVIDENCE AT THE TIME OF SURVEY AND IS TO BE CONSIDERED AN APPROXIMATE LOCATION ONLY. IT IS THE CONTRACTOR'S RESPONSIBILITY TO FIELD VERIFY THE FIELD LOCATION OF ALL UTILITIES, PUBLIC OR PRIVATE, WHETHER SHOWN ON THE PLANS OR NOT, PRIOR TO CONSTRUCTION. REPORT ANY DISCREPANCIES TO THE ENGINEER PRIOR TO CONSTRUCTION.
- WHERE A PROPOSED UTILITY CROSSES AN EXISTING UTILITY, IT IS THE CONTRACTOR'S RESPONSIBILITY TO FIELD VERIFY THE HORIZONTAL AND VERTICAL LOCATION OF SUCH EXISTING UTILITY, EITHER THROUGH POT-HOLING OR ALTERNATIVE METHOD. REPORT INFORMATION TO THE ENGINEER PRIOR TO CONSTRUCTION.



PREPARED UNDER THE DIRECT SUPERVISION OF JOSEPH L. WILSON, CID, PLA, COLORADO REGISTRATION LA-304 FOR & ON BEHALF OF STERLING DESIGN ASSOCIATES, LLC



Perception Design Group, Inc.

Consulting Civil Engineers

6901 South Pierce Street, Suite 315 Littleton, Colorado 80128  
 303-232-8088

# LOT 10 PARKER POINTE

LOT 10, PARKER POINTE FILING NO. 1

A PART SECTION 3, TOWNSHIP 7 SOUTH, RANGE 66 WEST OF THE SIXTH PRINCIPAL MERIDIAN  
TOWN OF PARKER, COUNTY OF DOUGLAS, STATE OF COLORADO

## LANDSCAPE NOTES

PAGE 7 OF 12

### STANDARD LANDSCAPE NOTES

- COORDINATION**
  - THIS LANDSCAPE ARCHITECTURAL SITE PLAN IS TO BE USED IN CONJUNCTION WITH THE CIVIL, ARCHITECTURAL, MECHANICAL, ELECTRICAL, STRUCTURAL, AND IRRIGATION PLANS, STANDARDS AND SPECIFICATIONS, TO FORM COMPLETE INFORMATION REGARDING THIS SITE. IT IS THE RESPONSIBILITY OF THE CONTRACTOR TO OBTAIN ALL NECESSARY AND UP-TO-DATE ISSUE PLAN SETS.
  - ALL LANDSCAPE AND IRRIGATION WORK SHALL BE COMPLETED PRIOR TO THE ISSUANCE OF THE FINAL CERTIFICATE OF OCCUPANCY.
  - MINOR ADJUSTMENTS TO THE LANDSCAPE MATERIAL AND LOCATIONS MAY BE PROPOSED FOR THE GOVERNING JURISDICTION CONSIDERATION AT THE CONSTRUCTION DOCUMENT STAGE TO RESPOND TO MARKET AND FIELD CONDITIONS. HOWEVER, THERE SHALL BE NO REDUCTION IN THE NUMBER AND SIZE OF MATERIALS.
  - THE CONTRACTOR SHALL BE RESPONSIBLE FOR HIS OWN TAKEOFFS AND QUANTITY CALCULATIONS.
  - IN THE EVENT OF A DISCREPANCY BETWEEN THE PLAN AND THE LANDSCAPE LEGEND, THE PLANT QUANTITY AS SHOWN ON THE PLAN SHALL TAKE PRECEDENCE AND NOTIFY THE LANDSCAPE ARCHITECT OF THESE DISCREPANCIES.
- COMPLIANCE**
  - ALL WORK SHALL CONFORM TO ALL APPLICABLE STATE AND LOCAL CODES, INCLUDING ANY STANDARDS, AND SPECIFICATIONS.
  - ALL LANDSCAPE CONSTRUCTION PRACTICES, WORKMANSHIP, AND ETHICS SHALL, BE IN ACCORDANCE WITH INDUSTRY STANDARDS SET FORTH IN THE CONTRACTORS HANDBOOK PUBLISHED BY THE STATE'S LANDSCAPE CONTRACTORS ASSOCIATION.
- GUARANTEE**
  - ALL MATERIALS AND WORKMANSHIP SHALL BE GUARANTEED FOR ONE YEAR FROM THE DATE OF THE OWNER'S ACCEPTANCE. THE CONTRACTOR SHALL REPLACE, AT HIS OWN EXPENSE, ANY PLANTS WHICH DIE AND REPAIR/REPLACE ANY PORTIONS OF THE IRRIGATION SYSTEM AS NECESSARY IN THAT TIME.
- COMPLETION AND MAINTENANCE**
  - FINAL ACCEPTANCE: WITHIN TEN DAYS OF CONTRACTOR'S NOTICE THAT THE ENTIRE PROJECT IS COMPLETE, THE L.A. SHALL REVIEW INSTALLATION. IF FINAL ACCEPTANCE IS NOT GIVEN, THE L.A. SHALL PREPARE A PUNCH LIST OF PENDING ITEMS. THE PUNCH LIST ITEMS SHALL BE COMPLETED BY THE CONTRACTOR WITHIN TEN CALENDAR DAYS FROM DATE ISSUED. SUBSEQUENT REVIEW AND APPROVAL SHALL SIGNIFY ACCEPTANCE.
  - LANDSCAPE MAINTENANCE: ALL LANDSCAPING SHALL BE MAINTAINED FROM INSTALLATION TO FINAL ACCEPTANCE. MAINTENANCE SHALL INCLUDE WATERING, FERTILIZING, WEEDING, MOWING, TRIMMING, ROLLING, RE-GRADING, REPLANTING, DISEASE AND INSECT PROTECTION. IF SITE IS TO OPEN DURING WINTER, IT IS THE RESPONSIBILITY OF THE CONTRACTOR TO COORDINATE WITH THE OWNER AND LANDSCAPE ARCHITECT ON TIMING FOR THE INSTALLATION OF PLANT MATERIAL. THE PROPERTY OWNER OF RECORD, THE OWNER'S AGENT OR TENANT SHALL KEEP ALL LANDSCAPING IN A WELL MAINTAINED AND HEALTHY GROWING CONDITION.
  - GRADING MAINTENANCE: DURING THE LANDSCAPE MAINTENANCE PERIOD, THE LANDSCAPE CONTRACTOR SHALL MAINTAIN POSITIVE DRAINAGE AWAY FROM STRUCTURES IN ALL LANDSCAPE AREAS AT THE MINIMUM SLOPE SPECIFIED IN THE GEOTECHNICAL REPORT. LANDSCAPE AREAS WHICH SETTLE AND CREATE THE POTENTIAL FOR PONDING SHALL BE REPAIRED TO ELIMINATE PONDING POTENTIAL AND BLEND IN WITH THE SURROUNDING GRADES. SHOULD ANY CONFLICTS AND/OR DISCREPANCIES ARISE BETWEEN THE GEOTECHNICAL REPORT, THESE NOTES, THE GRADING PLANS, AND ACTUAL CONDITIONS, THE CONTRACTOR SHALL IMMEDIATELY BRING SUCH ITEMS TO THE ATTENTION OF THE OWNER AND LANDSCAPE ARCHITECT.
  - IRRIGATION MAINTENANCE: DURING THE LANDSCAPE MAINTENANCE PERIOD, ALL IRRIGATION SHALL BE MAINTAINED IN PROPER WORKING ORDER, WITH SCHEDULING ADJUSTMENTS BY SEASON AND TO MAXIMIZE WATER CONSERVATION. WINTER WATERING SHALL BE AT THE EXPENSE OF THE CONTRACTOR UNTIL SUCH TIME AS FINAL ACCEPTANCE IS RECEIVED.
- SITE CONDITIONS**
  - LANDSCAPE CONTRACTOR SHALL EXAMINE THE SITE CONDITIONS UNDER WHICH THE WORK IS TO BE PERFORMED AND NOTIFY THE GENERAL CONTRACTOR IN WRITING OF UNSATISFACTORY CONDITIONS. DO NOT PROCEED UNTIL CONDITIONS ARE CORRECTED.
  - CONTRACTOR SHALL MAKE HIMSELF AWARE OF THE LOCATIONS OF EXISTING AND PROPOSED UTILITIES, AND SHALL BE RESPONSIBLE FOR ANY DAMAGE TO THE UTILITIES AND/OR ANY INJURY TO ANY PERSON. UNDER NO CIRCUMSTANCES SHOULD THIS PLAN BE USED FOR CONSTRUCTION PURPOSES WITHOUT EXAMINING ACTUAL LOCATIONS OF UTILITIES ON SITE AND REVIEW ALL RELATED PLANS AND DOCUMENTS.
  - LANDSCAPE CONTRACTOR SHALL BE RESPONSIBLE FOR FINISHED GRADES AND POSITIVE DRAINAGE IN LANDSCAPE AREAS.
  - ALL CONSTRUCTION DEBRIS AND MATERIAL SHALL BE REMOVED PRIOR TO INSTALLATION OF TOPSOIL, TREES, SHRUBS, AND TURF.
  - ALL UTILITY EASEMENTS SHALL REMAIN UNOBSTRUCTED AND FULLY ACCESSIBLE ALONG THEIR ENTIRE LENGTH FOR MAINTENANCE EQUIPMENT.
  - THE CONTRACTOR SHALL TAKE EXTREME CARE NOT TO DAMAGE ANY EXISTING PLANTS TO REMAIN. THE CONTRACTOR SHALL REPLACE ANY SUCH PLANTS DAMAGED DURING CONSTRUCTION/MAINTENANCE PERIODS WITH THE SAME SPECIES, SIZE, AND QUANTITY AT THE CONTRACTOR'S OWN EXPENSE, AND AS ACCEPTABLE TO THE OWNER. REFER TO THE TREE PROTECTION NOTES ON THE PLANS (AS APPLICABLE).
- DAMAGE AND CLEANING**
  - CONTRACTOR SHALL REPAIR OR REPLACE ALL ITEMS DAMAGED DUE TO THIS WORK AT NO ADDITIONAL COST TO THE OWNER.
  - CONTRACTOR SHALL CLEAN ALL AREAS DUE TO THIS WORK AND PROPERLY REMOVE ALL UNUSED MATERIALS FROM SITE.
- RIGHT OF REJECTION**
  - OWNER/LANDSCAPE ARCHITECT RESERVES THE RIGHT TO REJECT ANY MATERIALS AT ANY TIME.

- SOIL PREPARATION**
  - AFTER FINISH GRADES HAVE BEEN ESTABLISHED, IT IS RECOMMENDED THAT THE CONTRACTOR SHALL HAVE SOIL SAMPLES TESTED BY AN ESTABLISHED SOIL TESTING LABORATORY FOR THE FOLLOWING: GENERAL SOIL FERTILITY, PH, ORGANIC MATTER CONTENT, SALT (CEC), LIME, SODIUM ADSORPTION RATIO (SAR) AND BORON CONTENT. CONTRACTOR SHALL ALSO SUBMIT THE PROJECT'S PLANT LIST TO THE LABORATORY ALONG WITH THE SOIL SAMPLES. THE SOIL REPORT PRODUCED BY THE LABORATORY SHALL CONTAIN RECOMMENDATIONS FOR THE FOLLOWING (AS APPROPRIATE): GENERAL SOIL PREPARATION AND BACKFILL MIXES, PRE-PLANT FERTILIZER APPLICATIONS, AND ANY OTHER SOIL RELATED ISSUES. THE REPORT SHALL ALSO PROVIDE A FERTILIZER PROGRAM FOR THE ESTABLISHMENT PERIOD AND FOR LONG-TERM MAINTENANCE.
  - AT A MINIMUM, ALL TOPSOIL SHALL BE AMENDED WITH NITROGEN STABILIZED ORGANIC AMENDMENT OR APPROVED EQUAL AT A RATE OF 4.0 CUBIC YARDS PER THOUSAND SQUARE FEET OF LANDSCAPE AREA. AMENDMENT SHALL BE MECHANICALLY INTEGRATED INTO THE TOP 6" OF SOIL BY MEANS OF ROTOTILLING AFTER CROSS-RIPPING. NO MANURE OR ANIMAL-BASED PRODUCTS SHALL BE USED FOR ORGANIC AMENDMENTS.
  - ALL PLANT MATERIAL SHALL NOT BE PLANTED PRIOR TO INSTALLATION OF TOPSOIL.
- PLANT MATERIAL**
  - ALL PLANT MATERIAL SHALL MEET OR EXCEED CURRENT AMERICAN STANDARD FOR NURSERY STOCK ANSI Z60.1 AND THE COLORADO NURSERY ACT AND ACCOMPANYING RULES AND REGULATIONS.
  - TREES WITH CENTRAL LEADERS WILL NOT BE ACCEPTED IF LEADER IS DAMAGED OR REMOVED. PRUNE ALL DAMAGED TWIGS AFTER PLANTING.
  - ALL PLANTS WITHIN A SPECIES SHALL HAVE SIMILAR SIZE, AND SHALL BE OF A FORM TYPICAL FOR THE SPECIES. ANY PLANT DEEMED UNACCEPTABLE BY THE LANDSCAPE ARCHITECT SHALL BE IMMEDIATELY REMOVED FROM THE SITE AND SHALL BE REPLACED WITH AN ACCEPTABLE PLANT OF LIKE TYPE AND SIZE AT THE CONTRACTOR'S OWN EXPENSE. ANY PLANTS APPEARING TO BE UNHEALTHY, EVEN IF DETERMINED TO STILL BE ALIVE, SHALL NOT BE ACCEPTED. THE LANDSCAPE ARCHITECT SHALL BE THE SOLE JUDGE AS TO THE ACCEPTABILITY OF PLANT MATERIAL.
- PLANTING**
  - TREES AND SHRUBS SHALL BE PLANTED PER DETAILS. STAKE AND GUY TREES PER DETAILS. NO 'T-STAKES' SHALL BE USED FOR TREES.
  - TREES INSTALLATION PROCEDURE: SCARIFY SIDES OF PLANTING PIT PRIOR TO SETTING TREE. REMOVE EXCESS SOIL APPLIED ON TOP OF THE ROOTBALL THAT COVERS THE ROOT FLARE. THE PLANTING HOLE DEPTH SHALL BE SUCH THAT THE ROOTBALL RESTS ON UNDISTURBED SOIL, AND THE ROOT FLARE IS 3" ABOVE FINISH GRADE. CUT OFF BOTTOM 1/3 OF WIRE BASKET BEFORE PLACING TREE IN HOLE, CUT OFF AND REMOVE REMAINDER OF BASKET AFTER TREE IS SET IN HOLE. REMOVE ALL NYLON TIES, TWINE, ROPE, AND OTHER PACKING MATERIAL. REMOVE ALL BURLAP FROM AROUND ROOTBALL. TREE WRAP IS NOT TO BE USED ON ANY NEW PLANTINGS, EXCEPT IN LATE FALL PLANTING SITUATIONS, AND ONLY THEN AFTER CONSULTATION WITH THE LANDSCAPE ARCHITECT. WHEN WRAPPING TREE, WRAP FROM TRUNK FLARE TO LOWEST MAJOR BRANCH. REMOVE ALL NURSERY STAKES AFTER PLANTING. FOR TREES OVER 3" CALIPER, USE THREE STAKES OR DEADMEN (AS APPROPRIATE), SPACED EVENLY AROUND TREE.
  - TREE AND SHRUB BED LOCATIONS SHALL BE APPROVED PRIOR TO PLANTING.
  - BACKFILL WITH 1/3 SOIL AMENDMENT AND 2/3 SITE SOIL, THOROUGHLY MIXED.
  - A 3-FOOT CLEAR SPACE SHALL BE MAINTAINED AROUND THE CIRCUMFERENCE OF ALL FIRE HYDRANTS.
  - ALL TREES PLANTED ADJACENT TO PUBLIC AND/OR PEDESTRIAN WALKWAYS SHALL BE PRUNED CLEAR OF ALL BRANCHES BETWEEN GROUND AND A HEIGHT OF EIGHT (8) FEET FOR THAT PORTION OF THE PLAN LOCATED OVER THE SIDEWALK AND/OR ROAD.
  - ALL PLANT BEDS SHALL BE CONTAINED WITH EDGE AS SPECIFIED IN THE LEGEND. EDGER IS NOT REQUIRED ALONG CURBS, WALKS OR BUILDING FOUNDATIONS. WHEN STEEL EDGING IS SPECIFIED, ALL STEEL EDGING SHALL OVERLAP AT JOINTS A MINIMUM OF 6-INCHES, AND SHALL BE FASTENED WITH A MINIMUM OF 4 PINS PER EACH 10 FOOT SECTION. THE TOP OF ALL EDGING MATERIAL SHALL BE A ROLLED TOP AND 1/2 INCH ABOVE THE FINISHED GRADE OF ADJACENT LAWN OR MULCH AREAS. COLOR: GREEN.
- MULCH**
  - AFTER ALL PLANTING IS COMPLETE, THE CONTRACTOR SHALL INSTALL A MINIMUM 4" THICK LAYER OF MULCH AS SPECIFIED IN THE LEGEND. INSTALL A 4" THICK RING OF DOUBLE SHREDDED CEDAR BARK MULCH AROUND ALL PLANT MATERIAL IN ROCK MULCH BEDS WHERE LANDSCAPING IS SHOWN ON THE PLANS. WOOD MULCH RING SIZE SHALL BE THE SIZE OF THE OF SHRUB, PERENNIAL, AND ORNAMENTAL GRASS'S CONTAINER/ROOTBALL. TREE RING SIZE SHALL REFERENCE INDUSTRY STANDARDS SET FORTH IN THE CONTRACTORS HANDBOOK PUBLISHED BY THE STATE'S LANDSCAPE CONTRACTORS ASSOCIATION.
  - ALL MULCH SHALL BE HARVESTED IN A SUSTAINABLE MANNER FROM A LOCAL SOURCE.
  - INSTALL WEED BARRIER FABRIC UNDER ALL ROCK MULCH SHRUB BEDS SPECIFIED ON THE PLANS ONLY. NO LANDSCAPE FABRIC SHALL BE USED IN WOOD MULCH AREAS. NO PLASTIC WEED BARRIERS SHALL BE SPECIFIED.
  - ABSOLUTELY NO EXPOSED GROUND SHALL BE LEFT SHOWING ANYWHERE ON THE PROJECT AFTER MULCH HAS BEEN INSTALLED.
  - ALL PLANTING AREAS ON SLOPES OVER 4:1 SHALL RECEIVE COCONUT FIBER EROSION CONTROL NETTING FROM ROLLS OR APPROVED EQUAL. INSTALL AND STAKE PER MANUFACTURER'S SPECIFICATIONS.
- SODDING**
  - SOD SHALL BE CANADIAN BLUE FESCUE GRASS BY TURF MASTERS (970) 493-8311. SOIL PREP., INSTALL, AND WATER ACCORDING TO TURF MASTERS GUIDELINES.
- IRRIGATION**
  - THE IRRIGATION SYSTEM SHALL BE DESIGNED AND INSTALLED, TO THE MAXIMUM EXTENT POSSIBLE, TO CONSERVE WATER BY USING THE FOLLOWING DEVICES AND SYSTEMS: MATCHED PRECIPITATION RATE TECHNOLOGY ON ROTOR AND SPRAY HEADS (WHEREVER POSSIBLE), RAIN SENSORS, AND MULTI-PROGRAM COMPUTERIZED IRRIGATION CONTROLLERS FEATURING SENSORY INPUT CAPABILITIES.

- ALL NON-TURF PLANTED AREAS WILL BE DRIP IRRIGATED. SODDED/SEEDED AREAS SHALL BE IRRIGATED WITH SPRAY OR ROTOR HEADS AT 100% HEAD-TO-HEAD COVERAGE.
- THE IRRIGATION SYSTEM WILL OPERATE ON POTABLE WATER, AND THE SYSTEM WILL HAVE APPROPRIATE BACKFLOW PREVENTION DEVICES INSTALLED TO PREVENT CONTAMINATION OF THE POTABLE SOURCE PER LOCAL, STATE, AND FEDERAL CODE.
- REFER TO THE IRRIGATION PLAN (AS APPLICABLE).

### TOWN OF PARKER LANDSCAPE MAINTENANCE NOTES

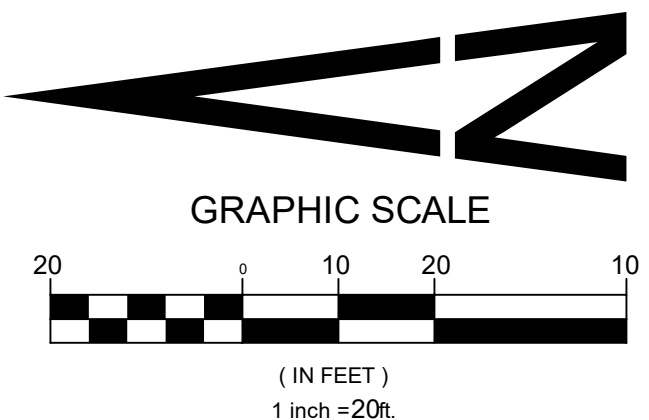
- ALL PLANTINGS SHALL BE MAINTAINED IN A HEALTHY AND ATTRACTIVE MANNER, AS DETERMINED BY THE TOWN. MAINTENANCE SHALL BE CONDUCTED BY THE PROPERTY OWNER OF RECORD, THE PROPERTY OWNER'S AGENT OR TENANT OR A HOMEOWNER'S ASSOCIATION WHICH HAS ASSUMED LANDSCAPE MAINTENANCE RESPONSIBILITY.
- ALL ORNAMENTAL LANDSCAPING SHALL BE MAINTAINED FREE FROM DISEASE, PESTS, WEEDS, AND LITTER. MAINTENANCE SHALL INCLUDE, BUT NOT BE LIMITED TO, WATERING, FERTILIZING, WEEDING, CLEANING, MOWING, EDGING, MULCHING, PRUNING, TRIMMING, SPRAYING, CULTIVATING, OR OTHER MAINTENANCE AS NEEDED AND IN ACCORDANCE WITH ACCEPTABLE HORTICULTURAL PRACTICES. AREAS OF NATIVE OR NATURALIZED LANDSCAPE ARE EXEMPT FROM THIS LEVEL OF MAINTENANCE. ACCEPTABLE MAINTENANCE OF NATIVE PLANTS INCLUDES, BUT IS NOT LIMITED TO, REMOVAL OF DEAD OR DISEASED PLANTS, WEED CONTROL AND SEASONAL MOWING.
- DEAD PLANT MATERIALS SHALL BE REMOVED AND REPLACED WITH HEALTHY PLANTING MATERIALS OF COMPARABLE SIZE AND SPECIES THAT MEET THE ORIGINAL INTENT OF THE APPROVED LANDSCAPE DESIGN WITHIN FORTY-FIVE (45) DAYS OF THEIR DEATH, UNLESS SEASONAL CONDITIONS PROHIBIT REMOVAL AND REPLACEMENT. IN SUCH CASE, THE REMOVAL AND REPLACEMENT SHALL OCCUR WITHIN A REASONABLE PERIOD OF TIME APPROVED BY THE TOWN.
- NON-LIVING LANDSCAPE MATERIALS SUCH AS ROCK, STONE, BARK CHIPS AND SHAVINGS WHICH NO LONGER COVER THE AREA IN WHICH THEY WERE ORIGINALLY DEPOSITED SHALL BE REGULARLY REPLENISHED TO MAINTAIN THE FULL COVERAGE TO A MINIMUM DEPTH OR THREE (3) INCHES FOR ROCK MULCHES AND FOUR (4) INCHES FOR WOOD MULCH.
- LANDSCAPING STRUCTURAL FEATURES (E.G. FENCING, WALLS, PLANTER BOXES) AND SITE FURNISHINGS SHALL BE MAINTAINED IN A SOUND, STRUCTURAL AND ATTRACTIVE CONDITION. IRRIGATION SYSTEMS ARE TO BE MONITORED AND ADJUSTED PERIODICALLY TO ENSURE THAT THE WATER DEMANDS OF ALL PLANT MATERIALS ARE BEING MET.
- IRRIGATION SYSTEM REPAIRS SHALL BE MADE WITHIN SEVEN (7) DAYS OF DISCOVERY OF DAMAGE, UNLESS SEASONAL CONDITIONS PROHIBIT REPAIRS.
- LANDSCAPE AREAS SHALL BE FREE FROM TRASH AND DEBRIS.
- FAILURE TO REPLACE DEAD LANDSCAPE MATERIALS WITHIN A REASONABLE PERIOD OF TIME, AS SPECIFIED IN PARAGRAPH (2) ABOVE, SHALL BE CONSIDERED A VIOLATION OF THE SITE PLAN APPROVAL AND IS SUBJECT TO ENFORCEMENT AND PENALTY PROVISIONS OF THIS TITLE.

### SEED NOTES

1. ALL SEED MIXES AVAILABLE THROUGH: WESTERN NATIVE SEED COMPANY P.O. BOX 188 COALDALE, CO 81222 (719) 942-3935	'HIGH PLAINS / FOOTHILLS GRASS MIX' FOR ELEVATIONS BETWEEN 4,500' - 7,000' SEEDING RATE: 3 LBS/1000 SQ.FT.	
	%	COMMON NAME
2. DRYLAND SEED MIXES ARE AVAILABLE AS FOLLOWS: 100% "FOOTHILLS GRASS MIX",	35	BOUTELOUA CURTIPENDULA SIDE-OATS GRAMA
	15	PASCOPYRUM SMITHII WESTERN WHEATGRASS
3. ALL SEED APPLICATIONS SHALL BE DRILL SEEDED, WITH HYDROSLURRY APPLIED OVER THE SEED BED AFTER SEEDING. THE SLURRY MIX SHALL CONTAIN THE FOLLOWING:	10	ELYMUS ELYMOIDES BOTTLEBRUSH SQUIRRELTAIL
	10	ELYMUS TRACHYCAULUS SLENDER WHEATGRASS
	5	ANDROPOGON GERARDII BIG BLUESTEM
	5	BOUTELOUA GRACILIS BLUE GRAMA
	5	ORYZOPSIS HYMENOIDES INDIAN RICEGRASS
	5	SCHIZACHYRIUM SCOPARIMUM LITTLE BLUESTEM
	5	SPOROBOLUS CRYPTANDRUS SAND DROPSEED
	5	STIPA VIRIDULA GREEN NEEDLEGRASS

#### SEED ESTABLISHMENT NOTES

- INSTALL PER SEED PROVEYOR'S AND/OR MANUFACTURE'S RECOMMENDATIONS.
- THE LANDSCAPE CONTRACTOR SHALL SEED ALL NATIVE SEED AREAS AS SOON AS POSSIBLE AFTER COMPLETION OF GRADING OPERATIONS. SOIL PREPARATION MEASURES IN AREAS TO BE SEEDED SHALL BE COMPLETED PRIOR TO SEEDING.
- FOR PROPER ESTABLISHMENT, SEED SHALL BE INSTALLED WHEN AT LEAST THREE MONTHS REMAIN IN THE GROWING SEASON. IF LESS THAN THREE MONTHS REMAIN IN THE GROWING SEASON AT THE TIME OF SEEDING, THE LANDSCAPE CONTRACTOR SHALL IMMEDIATELY NOTIFY THE LANDSCAPE ARCHITECT AND OWNER. THE IRRIGATION SYSTEM FOR SEEDED AREAS SHALL BE FULLY OPERATIONAL AT THE TIME OF SEEDING.
- THE CONTRACTOR SHALL BE SOLELY RESPONSIBLE FOR ADDITIONAL CORRECTIVE MEASURES, AT HIS OWN COST, TO SATISFY ESTABLISHMENT REQUIREMENTS AND ENSURE TIMELY CLOSEOUT. THESE MEASURES MAY INCLUDE, AT THE OWNER'S OPTION, RESEEDING OF SPARSELY GERMINATED AREAS AND/OR INSTALLATION OF SOD IN ALL SEEDED AREAS.



OCTOBER 20, 2017



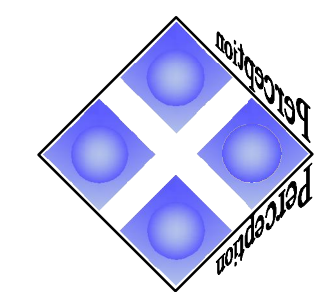
Know what's Below.  
Call before you dig.

### CAUTION - NOTICE TO CONTRACTOR

- ALL UTILITY LOCATIONS SHOWN ARE BASED ON MAPS PROVIDED BY THE APPROPRIATE UTILITY COMPANY AND FIELD SURFACE EVIDENCE AT THE TIME OF SURVEY AND IS TO BE CONSIDERED AN APPROXIMATE LOCATION ONLY. IT IS THE CONTRACTOR'S RESPONSIBILITY TO FIELD VERIFY THE FIELD LOCATION OF ALL UTILITIES, PUBLIC OR PRIVATE, WHETHER SHOWN ON THE PLANS OR NOT, PRIOR TO CONSTRUCTION. REPORT ANY DISCREPANCIES TO THE ENGINEER PRIOR TO CONSTRUCTION.
- WHERE A PROPOSED UTILITY CROSSES AN EXISTING UTILITY, IT IS THE CONTRACTOR'S RESPONSIBILITY TO FIELD VERIFY THE HORIZONTAL AND VERTICAL LOCATION OF SUCH EXISTING UTILITY, EITHER THROUGH POT-HOLING OR ALTERNATIVE METHOD. REPORT INFORMATION TO THE ENGINEER PRIOR TO CONSTRUCTION.



PREPARED UNDER THE DIRECT SUPERVISION OF JOSEPH L. WILSON, C.D., P.L.A., COLORADO REGISTRATION LA-304 FOR & ON BEHALF OF STERLING DESIGN ASSOCIATES, LLC



Perception  
Design Group, Inc.

Consulting Civil Engineers

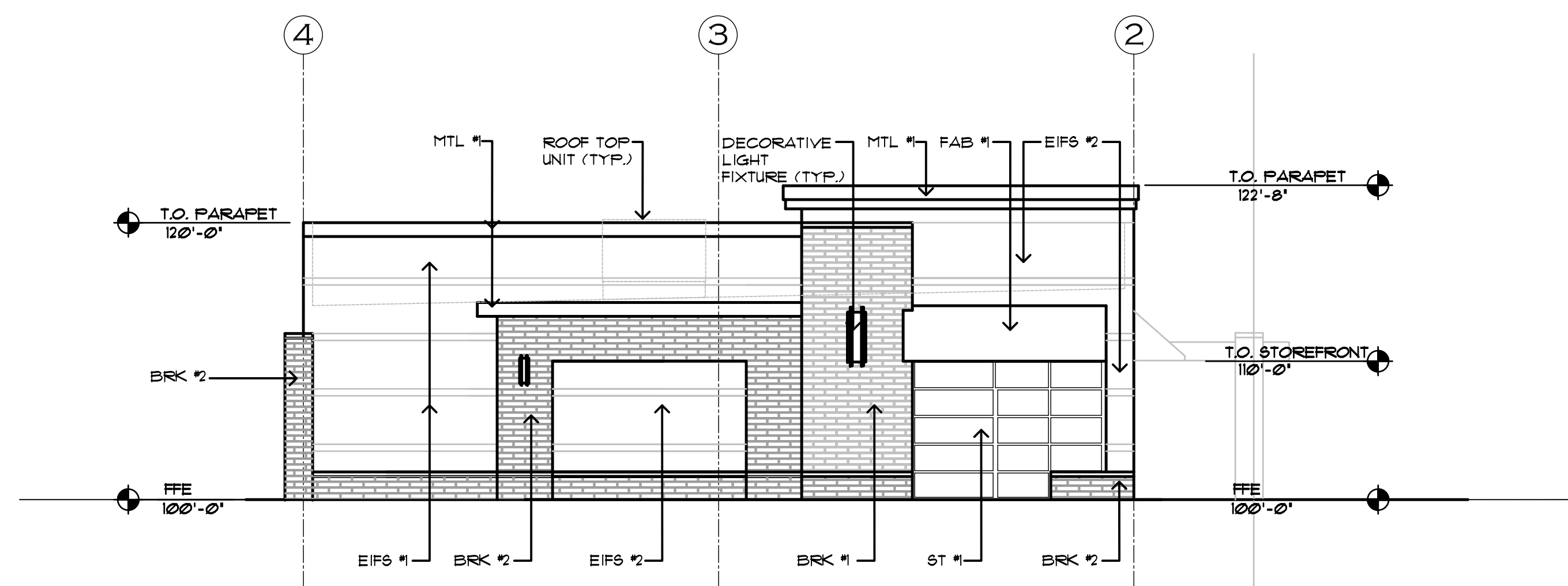
6901 South Pierce Street, Suite 315 ◊ Littleton, Colorado 80128  
◊ 303-232-8088

# LOT 10 PARKER POINTE

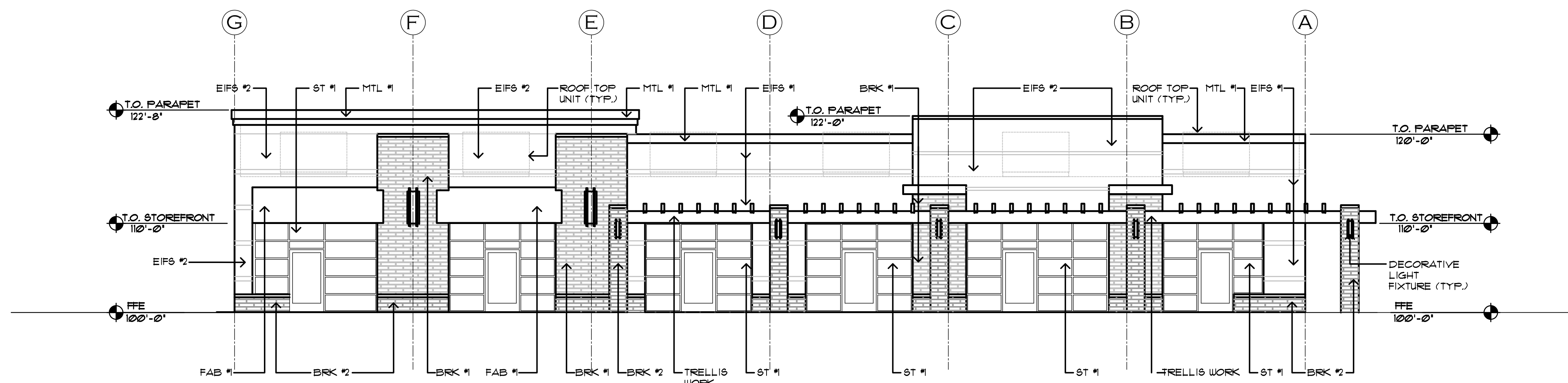
LOT 10, PARKER POINTE FILING NO. 1  
 A PART SECTION 3, TOWNSHIP 7 SOUTH, RANGE 66 WEST OF THE SIXTH PRINCIPAL MERIDIAN  
 TOWN OF PARKER, COUNTY OF DOUGLAS, STATE OF COLORADO

## EXTERIOR ELEVATIONS

PAGE 8 OF 12





**02 SOUTH ELEVATION**  
 SCALE: 1/8" = 1'-0"



**01 EAST ELEVATION**  
 SCALE: 1/8" = 1'-0"

### EXTERIOR MATERIAL LEGEND

AWNING (FAB #1)	MANUFACTURE, SUNBRELLA - COLOR 'FLAGSHIP ROUGE'
AWNING (FAB #2)	MANUFACTURE, SUNBRELLA - COLOR 'FLAGSHIP IVY'
MTL FLASHING (MTL #1)	MANUFACTURE, BERRIDGE - COLOR 'DARK BRONZE'
EIFS/STUCCO (EIFS #1)	MANUFACTURE, DRYVIT - COLOR 'PARCHMENT'
EIFS/STUCCO (EIFS #2)	MANUFACTURE, DRYVIT - COLOR 'GULL GRAY'
ALUMINUM STOREFRONT (ST #1)	MANUFACTURE, KAUNEER - COLOR 'ANODIZED'
 BRICK VENEER (BRK #1)	MANUFACTURE, SUMMIT BRICK - COLOR 'SUNSET RED'
 BRICK VENEER (BRK #2)	MANUFACTURE, SUMMIT BRICK - COLOR 'CHARCOAL IRONSPOT'

OCTOBER 25, 2017



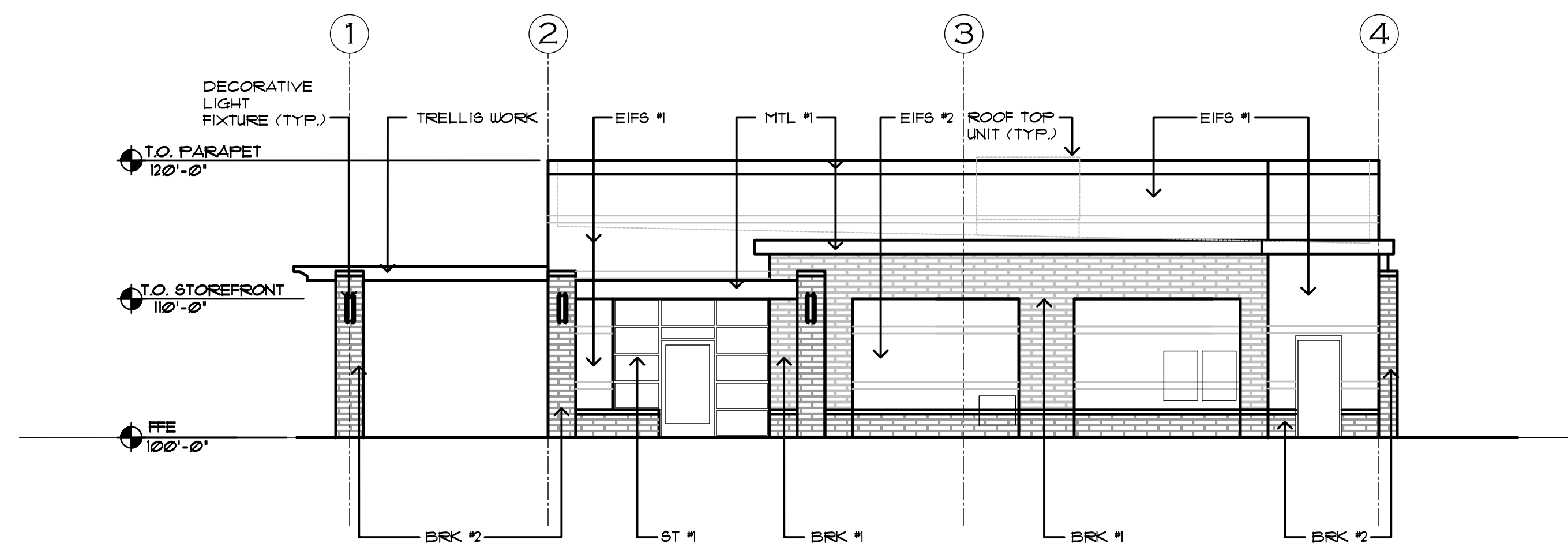
Architecture - Planning  
 425 Wilcox Street, Ste. 120  
 Castle Rock, Co 80104  
 720-878-6534

# LOT 10 PARKER POINTE

LOT 10, PARKER POINTE FILING NO. 1  
 A PART SECTION 3, TOWNSHIP 7 SOUTH, RANGE 66 WEST OF THE SIXTH PRINCIPAL MERIDIAN  
 TOWN OF PARKER, COUNTY OF DOUGLAS, STATE OF COLORADO



## EXTERIOR ELEVATIONS

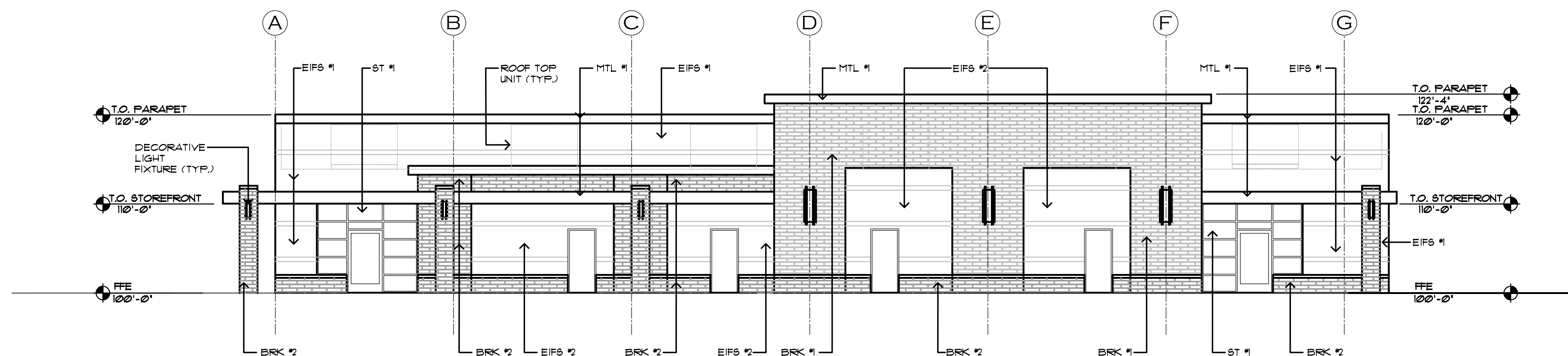
PAGE 9 OF 12



**02 NORTH ELEVATION**  
 SCALE: 1/8" = 1'-0"

### EXTERIOR MATERIAL LEGEND

AWNING (FAB #1)	MANUFACTURE, SUNBRELLA - COLOR 'FLAGSHIP ROUGE'
AWNING (FAB #2)	MANUFACTURE, SUNBRELLA - COLOR 'FLAGSHIP IVY'
MTL FLASHING (MTL #1)	MANUFACTURE, BERRIDGE - COLOR 'DARK BRONZE'
EIFS/STUCCO (EIFS #1)	MANUFACTURE, DRYVIT - COLOR 'PARCHMENT'
EIFS/STUCCO (EIFS #2)	MANUFACTURE, DRYVIT - COLOR 'GULL GRAY'
ALUMINUM STOREFRONT (ST #1)	MANUFACTURE, KAWNEER - COLOR 'ANODIZED'
 BRICK VENEER (BRK #1)	MANUFACTURE, SUMMIT BRICK - COLOR 'SUNSET RED'
 BRICK VENEER (BRK #2)	MANUFACTURE, SUMMIT BRICK - COLOR 'CHARCOAL IRONSPOT'



**01 WEST ELEVATION**  
 SCALE: 1/8" = 1'-0"

OCTOBER 25, 2017



Architecture - Planning  
 425 Wilcox Street, Ste. 120  
 Castle Rock, Co 80104  
 720-878-6534

# LOT 10 PARKER POINTE

LOT 10, PARKER POINTE FILING NO. 1

A PART SECTION 3, TOWNSHIP 7 SOUTH, RANGE 66 WEST OF THE SIXTH PRINCIPAL MERIDIAN

TOWN OF PARKER, COUNTY OF DOUGLAS, STATE OF COLORADO

## SITE PHOTOMETRIC PLAN

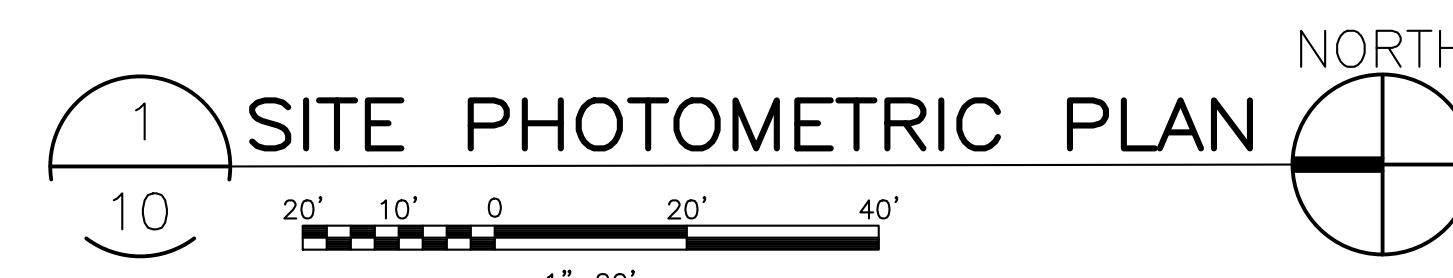
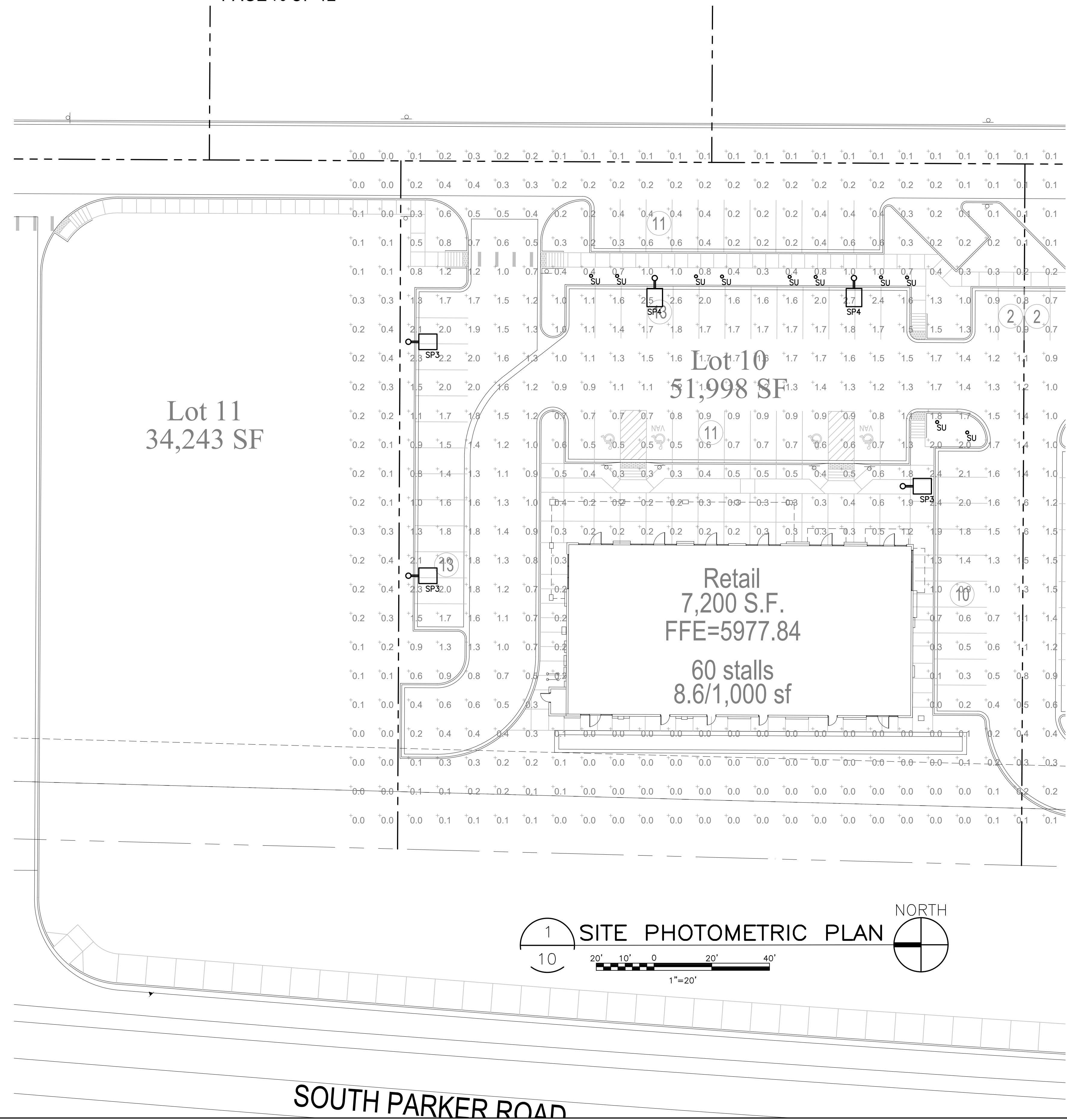
PAGE 10 OF 12

### GENERAL NOTES:

1. ALL EXTERIOR SITE LIGHTING FIXTURES SHALL BE CONTROLLED BY AN ASTRONOMICAL TIMECLOCK OR PHOTOCELL.
2. PHOTOMETRIC CALCULATIONS HAVE BEEN DETERMINED USING A LIGHT LOSS FACTOR OF 1.0
3. VALUES SHOWN ARE MAINTAINED HORIZONTAL ILLUMINANCE VALUES MEASURED AT GRADE.
4. SITE LIGHTING DESIGN HAS BEEN COMPLETED TO PRODUCE EVEN ILLUMINATION OF PARKING AND PAVED AREAS WITH NO GLARE ONTO ADJACENT PROPERTIES.
5. THERE WILL BE NO OFF-SITE GLARE ALLOWED.

### STATISTICS

Description	Symbol	Avg	Max	Min	Max/Min Ratio
SITE CALCS	+	0.7 fc	2.8 fc	0.0 fc	N/A



OCTOBER 25, 2017

**GIVEN**  
& ASSOCIATES INC  
MECHANICAL & ELECTRICAL ENGINEERS  
735 S. Xenon Ct. #201  
Lakewood, Colorado 80228  
Ph: 303.716.1270  
Fax: 303.716.1272  
www.givenandassociates.com  
Project # 17133

# LOT 10 PARKER POINTE

LOT 10, PARKER POINTE FILING NO. 1

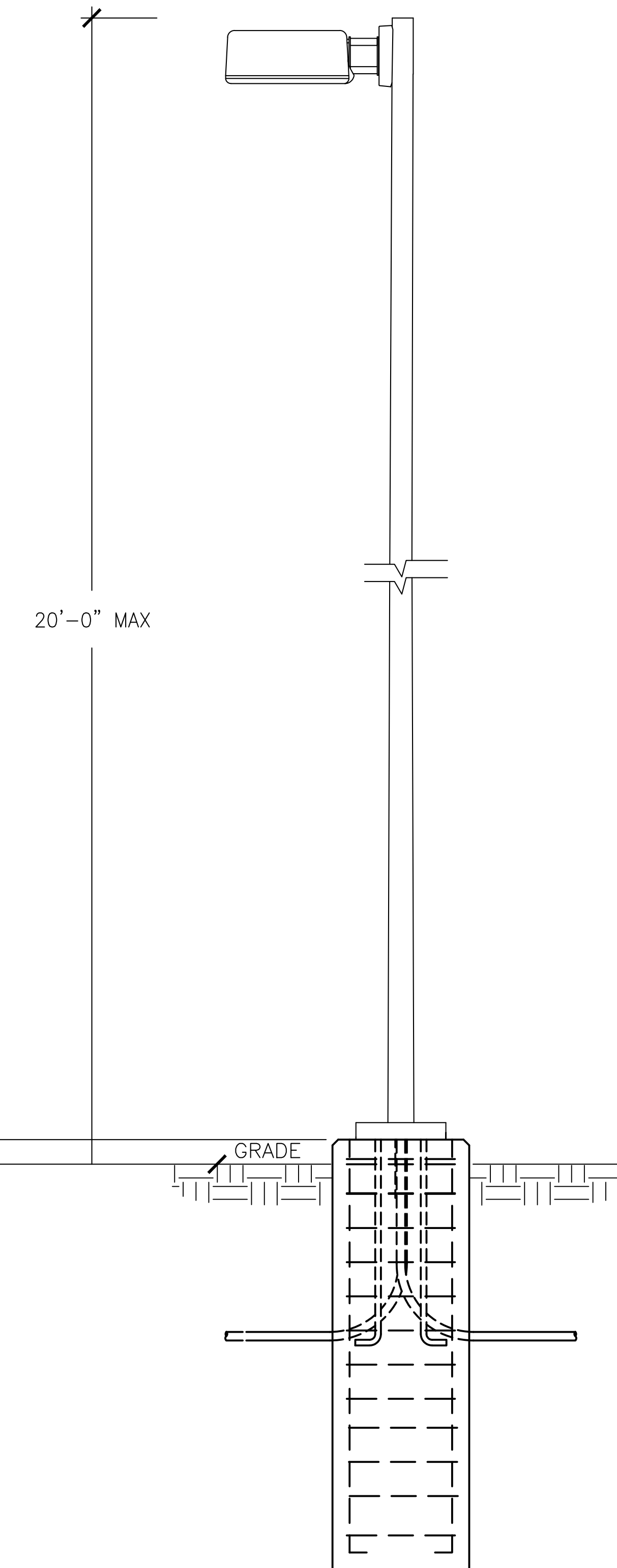
A PART SECTION 3, TOWNSHIP 7 SOUTH, RANGE 66 WEST OF THE SIXTH PRINCIPAL MERIDIAN  
TOWN OF PARKER, COUNTY OF DOUGLAS, STATE OF COLORADO

## SITE LIGHTING DETAILS

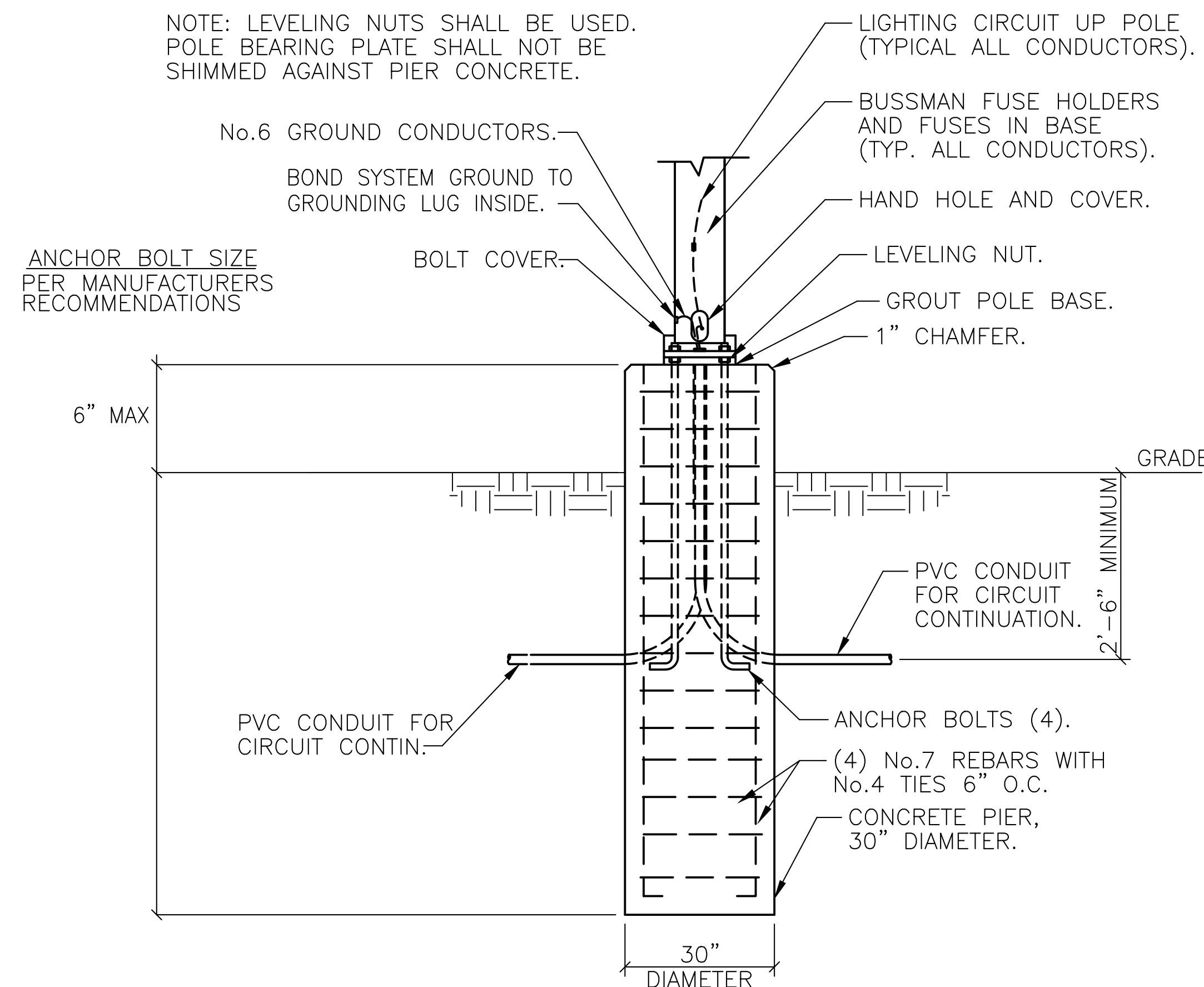
PAGE 11 OF 12

LUMINAIRE SCHEDULE							
PLAN MARK	MOUNTING	DESCRIPTION	MANUFACTURER AND CATALOG NUMBER	VOLTAGE	NO. OF LAMPS	LAMP TYPE	REMARKS
SP3	POLE	20' HEIGHT	LITHONIA KAD-LED-30C-700-30K-ER-MVOLT-HS	120/208	1	69W LED	TYPE III DISTRIBUTION W/ HOUSE SIDE SHEILDS
SP4	POLE	20' HEIGHT	LITHONIA KAD-LED-30C-700-30K-R4-MVOLT	120/208	1	69W LED	TYPE IV DISTRIBUTION
SU	IN-GRADE	TREE UPLIGHT	LITHONIA OLBF-8-30K-MVOLT-DDB	MVOLT	1	10.5W LED	

TYPE 'SD1/SD3/SD4/SD5' FIXTURES  
LOCATED IN LANDSCAPE



1 POLE DETAIL  
11 N.T.S.



2 POLE BASE DETAIL  
11 N.T.S.

OCTOBER 25, 2017

**GIVEN**  
MECHANICAL & ELECTRICAL ENGINEERS  
735 S. Xenon Ct. #201  
Lakewood, Colorado 80228  
Ph: 303.716.1270  
Fax: 303.716.1272  
www.givenandassociates.com  
Project # 17133


# LOT 10 PARKER POINTE

LOT 10, PARKER POINTE FILING NO. 1

A PART SECTION 3, TOWNSHIP 7 SOUTH, RANGE 66 WEST OF THE SIXTH PRINCIPAL MERIDIAN  
TOWN OF PARKER, COUNTY OF DOUGLAS, STATE OF COLORADO

# SITE LIGHTING DETAILS

PAGE 12 OF 12



**KAD LED  
LED Area Luminaire**

**Specifications**

Length: 17-1/2" (44.3 cm)

Width: 7-1/2" (19.1 cm)

Height: 3-1/8" (7.8 cm)

Weight (max): 36 lbs. (16.4 kg)

**Ordering Information**

**EXAMPLE: KAD LED 40C 1000 40K RS MVOLT SPD04 DDBXD**

Series	LEDs	Driver current	CCT	Distribution	Voltage	Mounting	Shipped separately
KAD LED	20C* 20 LEDs	530 530 mA	30K 3000K	R2 Spot II	MVOLT 277V	SP77*	SP77*
	30C* 30 LEDs	790 790 mA	40K 4000K	R3 Spot III	120V 120V	SP34*	SP34*
	40C 40 LEDs	1000 1000 mA	50K 5000K	R4 Spot IV	208V 208V	SP48*	SP48*
	40C 40 LEDs			R5 Spot V	240V 240V	SP48*	SP48*

**Capable Luminaire**

This item is an A+ capable luminaire, which has been designed and tested to provide consistent color appearance and system-level interoperability.

- All configurations of this luminaire meet the Acuity Brands' specification for chromatic consistency.
- This luminaire is A+ Certified when ordered with DTL\* controls marked by a shaded background. DTL DLL equipped luminaires meet the A+ specification for luminaire to photocentric interoperability.
- This luminaire is part of an A+ Certified solution for ROAM2 or XPoint™ Wireless control networks, providing out-of-the-box control compatibility with simple commissioning, when ordered with drivers and control options marked by a shaded background.

To learn more about A+, visit [www.acuitybrands.com/aplus](http://www.acuitybrands.com/aplus).

- See ordering tree for details.
- A+ Certified Solutions for ROAM require the order of one ROAM node per luminaire. Sold Separately. [Link to ROAM: Link to DTL DLL](#)

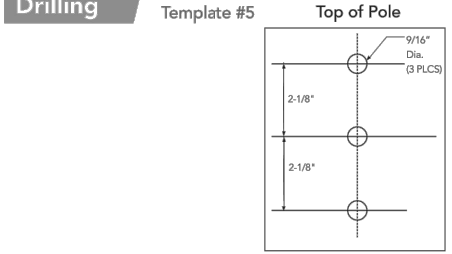
**Ordering Information**

**EXAMPLE: KAD LED 40C 1000 40K RS MVOLT SPD04 DDBXD**

Series	LEDs	Driver current	CCT	Distribution	Voltage	Mounting	Shipped separately
KAD LED	20C* 20 LEDs	530 530 mA	30K 3000K	R2 Spot II	MVOLT 277V	SP77*	SP77*
	30C* 30 LEDs	790 790 mA	40K 4000K	R3 Spot III	120V 120V	SP34*	SP34*
	40C 40 LEDs	1000 1000 mA	50K 5000K	R4 Spot IV	208V 208V	SP48*	SP48*
	40C 40 LEDs			R5 Spot V	240V 240V	SP48*	SP48*

**Drilling**

Template #5



**Tenon Mounting Slipfitter\*\***

Height	100-150	150-200	200-250	250-300	300-350	350-400
2-1/8"	125-190	125-280	125-290	125-330	125-390	125-490
2-7/8"	125-190	125-280	125-290	125-330	125-390	125-490
4"	125-190	125-280	125-290	125-330	125-390	125-490

\*\*For wall mount (SP50) only. †Repeat for 1" increments.

**Performance Data**

**Lumen Output**

Lumen values are from photometric tests performed in accordance with IESNA LM-79-08. Data is considered to be representative of the configurations shown, within the tolerances allowed by Lighting Facts.

Center beam for performance data or any other configuration shown here.

Series	Beam Type	Beam Angle	Beam Diameter (ft)	Beam Diameter (m)	Beam Area (sq ft)	Beam Area (sq m)	Beam Area (sq ft) x Lumens	Beam Area (sq m) x Lumens
500 mA	30R	10	R2	4.98	1.5	2.25	107	238
			R3	4.52	1.4	1.96	107	238
			R4	4.18	1.3	1.69	107	238
	40R	15	R2	4.80	1.5	2.25	124	275
			R3	4.37	1.4	1.96	124	275
			R4	4.05	1.3	1.69	124	275
700 mA	40R	15	R2	5.07	1.6	2.56	124	275
			R3	4.67	1.5	2.25	124	275
			R4	4.38	1.4	1.96	124	275
	50R	20	R2	5.28	1.7	2.89	124	275
			R3	4.91	1.6	2.56	124	275
			R4	4.58	1.5	2.25	124	275
1000 mA	70R	25	R2	5.58	1.8	3.24	124	275
			R3	5.14	1.7	2.89	124	275
			R4	4.82	1.6	2.56	124	275
	50R	15	R2	5.28	1.7	2.89	124	275
			R3	4.91	1.6	2.56	124	275
			R4	4.58	1.5	2.25	124	275
1500 mA	90R	30	R2	5.87	1.9	3.61	124	275
			R3	5.46	1.8	3.24	124	275
			R4	5.18	1.7	2.89	124	275
	60R	15	R2	5.58	1.8	3.24	124	275
			R3	5.14	1.7	2.89	124	275
			R4	4.82	1.6	2.56	124	275
2000 mA	140R	45	R2	6.18	2.1	4.41	124	275
			R3	5.78	2.0	4.00	124	275
			R4	5.42	1.9	3.61	124	275
	70R	25	R2	5.87	1.9	3.61	124	275
			R3	5.46	1.8	3.24	124	275
			R4	5.18	1.7	2.89	124	275
3000 mA	100R	60	R2	6.58	2.3	5.29	124	275
			R3	6.18	2.2	4.84	124	275
			R4	5.87	2.1	4.41	124	275
	50R	30	R2	6.18	2.1	4.41	124	275
			R3	5.78	2.0	4.00	124	275
			R4	5.42	1.9	3.61	124	275
4000 mA	150R	90	R2	6.87	2.5	6.25	124	275
			R3	6.47	2.4	5.76	124	275
			R4	6.18	2.3	5.29	124	275
	70R	45	R2	6.58	2.3	5.29	124	275
			R3	6.18	2.2	4.84	124	275
			R4	5.87	2.1	4.41	124	275
5000 mA	200R	135	R2	7.18	2.7	7.29	124	275
			R3	6.78	2.6	6.76	124	275
			R4	6.47	2.5	6.25	124	275
	100R	60	R2	6.87	2.5	6.25	124	275
			R3	6.47	2.4	5.76	124	275
			R4	6.18	2.3	5.29	124	275

**LITHONIA LIGHTING**

**FEATURES & SPECIFICATIONS**

**INTENDED USE**

The OLB Bullet Floodlight is a long-lasting energy-efficient landscape floodlight. Available with spot or flood optics making it ideal for many commercial and residential outdoor applications such as lighting of landscapes, buildings, decks and flagpoles.

**CONSTRUCTION**

Die-cast aluminum housing has long life heat sink fins to optimize thermal management through conduction and convection cooling. The LED driver is mounted in the beam housing providing a long operating temperature and long life. Housing is sealed against moisture and environmental contaminants (IP65). Finish: Exterior parts are protected by a thermoplastic powder coat finish that provides superior resistance to corrosion and weathering. Highly controlled multi-stage process ensures a minimum 3-mil thickness for a finish that can withstand extreme climate changes without cracking or peeling.

**OPTICS**

Optics are engineered for superior field-to-beam ratio, uniformity and spacing. Available with 50 x 40 flood optics for illuminating larger objects or 20 x 20 spot optics for illuminating targets up to 50 feet away. Light engines are available in 3000K (60 CRI min.) or 5000K (94 CRI min.) configurations.

**ELECTRICAL**

MVOLT driver operates on any line voltage from 120-277V (50/60 Hz). Light engine consists of four (4) discrete LEDs directly mounted directly to the heat sink to maximize heat dissipation and maximize life (100,000 hrs at 40°C L80). Driver is thermally isolated in base to promote long life. Operating temperature: -30°C to 40°C.

**INSTALLATION**

Simple adjustable knuckle with 1/2-14 NPT threaded pipe facilitates quick and easy installation in a variety of mounting methods.

**LISTINGS**

UL Listed in U.S. and Canadian safety standards for wet locations within four feet of the ground. Tested in accordance with IESNA LM-79 and LM-80 standards.

**WARRANTY**

5-year limited warranty. Complete warranty terms located at [www.lithonia.com/customer-service/terms\\_and\\_conditions.aspx](http://www.lithonia.com/customer-service/terms_and_conditions.aspx). Actual performance may differ as a result of end-user environment and application. Note: Specifications subject to change without notice.

Ordering Number: \_\_\_\_\_

Name: \_\_\_\_\_

Type: **SU**

**OLB**

**LED Bullet Flood Light**



**INSTALLATION**



All dimensions are inches (convert to mm unless otherwise indicated).

**ORDERING INFORMATION**

For shortest lead times, configure product using **bulb** options.

**Example: OLB 8 30K DDB**

Series	Light engine	Color temperature (CCT)	Voltage	Finish
OLB	5x4 flood optics	8	30K 3000K	(black) MVOLT
OLB	2x2 spot optics	8	50K 5000K	DOB Dark bronze

**OLB LED Bullet Flood Light**

**LIGHTING FACTS**

To see complete photometric reports or download .asx files for this product, visit [www.lithonia.com/lightingfacts](http://www.lithonia.com/lightingfacts). Actual wattage may differ by +/- 5% when operating at 120V or 277V +/- 10%.

**OLB 8 30K DDB**

Light Output (Lumens)	592
Watts	10.5
Lumens per Watt (Efficacy)	56
Color Accuracy (Color Rendering Index CRI)	84
Light Color (Correlated Color Temperature CCT)	3005 (Bright White)
Warm White	Bright White
Daylight	Daylight

**OLB 8 50K DDB**

Light Output (Lumens)	839
Watts	11.3
Lumens per Watt (Efficacy)	74
Color Accuracy (Color Rendering Index CRI)	66
Light Color (Correlated Color Temperature CCT)	4756 (Daylight)
Warm White	Bright White
Daylight	Daylight

**OLB 8 30K DDB**

Light Output (Lumens)	592
Watts	10.5
Lumens per Watt (Efficacy)	56
Color Accuracy (Color Rendering Index CRI)	84
Light Color (Correlated Color Temperature CCT)	3005 (Bright White)
Warm White	Bright White
Daylight	Daylight

**OLB 8 50K DDB**

Light Output (Lumens)	839
Watts	11.3
Lumens per Watt (Efficacy)	74
Color Accuracy (Color Rendering Index CRI)	66
Light Color (Correlated Color Temperature CCT)	4756 (Daylight)
Warm White	Bright White
Daylight	Daylight

**OLB 8 30K DDB**

Light Output (Lumens)	592
Watts	10.5
Lumens per Watt (Efficacy)	56
Color Accuracy (Color Rendering Index CRI)	84
Light Color (Correlated Color Temperature CCT)	3005 (Bright White)
Warm White	Bright White
Daylight	Daylight

**OLB 8 50K DDB**

Light Output (Lumens)	832
Watts	10.9
Lumens per Watt (Efficacy)	76
Color Accuracy (Color Rendering Index CRI)	66
Light Color (Correlated Color Temperature CCT)	4688 (Daylight)
Warm White	Bright White
Daylight	Daylight

OCTOBER 25, 2017

**GIVEN**  
& ASSOCIATES INC.  
MECHANICAL & ELECTRICAL ENGINEERS

735 S. Xenon Ct. #201  
Lakewood, Colorado 80228  
Ph: 303.716.1270  
Fax: 303.716.1272  
[www.givenandassociates.com](http://www.givenandassociates.com)  
Project # 17133