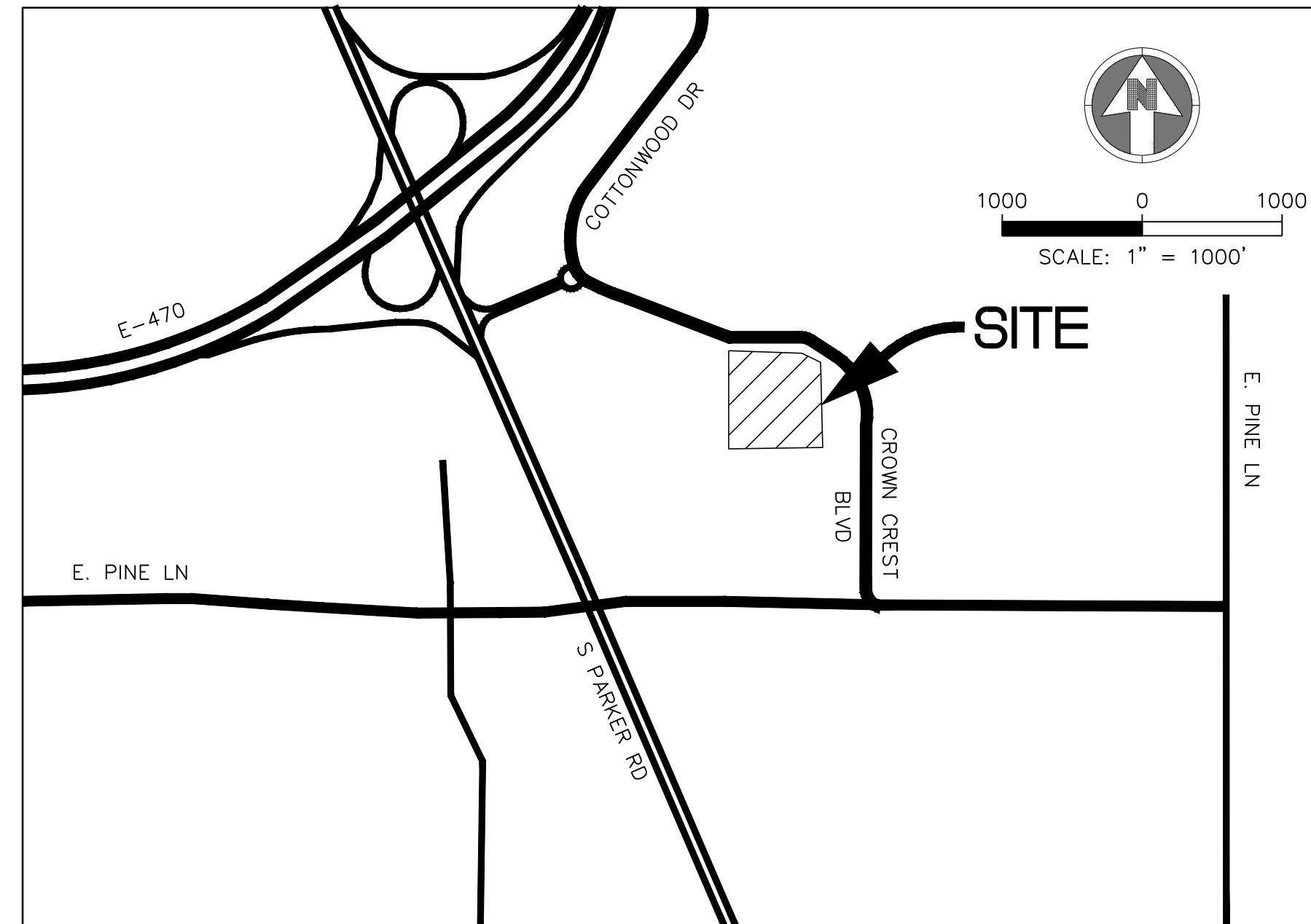


PARKER ADVENTIST HOSPITAL MOB III

A PARCEL OF LAND BEING LOT 1, TRACT A, CROWN POINT F#1, 18TH AMENDMENT PLAT
SITUATED IN THE NORTHWEST QUARTER OF SECTION 10, TOWNSHIP 6 SOUTH, RANGE 66
WEST OF THE 6TH PRINCIPAL MERIDIAN,
TOWN OF PARKER, COUNTY OF DOUGLAS, STATE OF COLORADO



VICINITY MAP
SCALE: 1"=1000'

SHEET LIST	
1 OF 11	COVER SHEET
2 OF 11	SITE PLAN
3 OF 11	LANDSCAPE PLAN
4 OF 11	LANDSCAPE NOTES AND DETAILS
5 OF 11	TREE PRESERVATION PLAN
6 OF 11	BUILDING ELEVATIONS
7 OF 11	BUILDING ELEVATIONS
8 OF 11	BRIDGE AND SITE ENCLOSURES ELEVATIONS
9 OF 11	BUILDING RENDERINGS
10 OF 11	SITE LIGHTING PHOTOMETRIC PLAN
11 OF 11	SITE LIGHTING CUT SHEETS & DETAIL

AGENCY LIST

ELECTRIC-IREA
PO DRAWER A
5496 US HWY 85
SEDALIA, CO. 80135
303-688-3100
CONTACT: BROOKS KAUFMAN

FIRE-SOUTH METRO FIRE RESCUE
9195 E. MINERAL AVE
CENTENNIAL, CO 80112
720-989-2000
CONTACT: RANDY CAPRA

TOWN OF PARKER-PUBLIC WORKS
9200 MOTSENBOCKER ROAD
PARKER, CO 80134
303-840-9546
CONTACT: MIKE WAUGH

CABLE-COMCAST
6850 S. TUSCON WAY
ENGLEWOOD, CO. 80112
303-603-5605
CONTACT: KEVIN YOUNG

TRI-COUNTY HEALTH DEPARTMENT
7000 E. BELLEVIEW AVENUE
GREENWOOD VILLAGE, CO. 80111
303-220-9200
CONTACT: CAROL MACLENNAN

CROWN POINT ARCHITECTURAL
CONTROL COMMITTEE
27905 MEADOW DRIVE, SUITE 11
EVERGREEN, CO 80439
303-674-7856
CONTACT: TIM LEONARD

GAS-XCEL ENERGY
2070 SOUTH VALENTIA STREET
DENVER, CO. 80231
1-800-628-2121
CONTACT: DESIGN MANAGER

TOWN OF PARKER
PLANNING AND BUILDING DEPT.
20120 E. MAIN STREET
PARKER, CO. 80134
303-841-0363
CONTACT: PATRICK MULREADY

COTTONWOOD WATER & SANITATION DISTRICT
2 INVERNESS DRIVE EAST
ENGLEWOOD, CO
303-792-9509
CONTACT: PATRICK MULHERN/ LAURI TATLOCK

TELEPHONE - QWEST COMMUNICATIONS
LOCAL NETWORK OPERATIONS
9750 E. COSTILLA AVENUE
ENGLEWOOD, CO. 80112
303-792-1840
CONTACT: WILLIAM BENSON

COTTONWOOD WATER AND SANITATION
DISTRICT ENGINEER-KENNEDY JENKS CONSULTING
143 UNION BOULEVARD
SUITE 600
LAKEWOOD, CO 80228
PHONE: 303-985-3636
CONTACTS: TOM NAPOLLILLI

2332

Paul Workman

OWNER INFORMATION

PARKER ADVENTIST HOSPITAL
9395 CROWN CREST BLVD.
PARKER, CO. 80138
303-269-4014
CONTACT: JONATHON FISHER / CFO

DEVELOPER INFORMATION

PKR MOB III, LLC
7350 EAST PROGRESS PLACE, SUITE 106
GREENWOOD VILLAGE, CO 80111
303-830-1444
CONTACT: PATRICIA WASSIK / PRESIDENT

DESIGN INFORMATION

ARCHITECT: RTA ARCHITECTS
PHONE: 719-471-7566

CIVIL ENGINEER: S. A. MIRO, INC
PHONE: 303-741-3737

LANDSCAPE ARCHITECT: GROUND LOGIC INC.
PHONE: 303-733-8333

PHOTOMETRIC ENGINEER: SSR, INC.
PHONE: 303-779-1222

PARKER PROJECT NUMBER
SP18-

DRAWN BY
SSM

DATE
8/8/2018

REVISION	DESCRIPTION	DATE
0	INITIAL SUBMITTAL TO TOWN	8/8/18



S.A. MIRO, INC.
CONSULTING ENGINEERS
4582 South Ulster Street Pkwy.
Suite 750 Denver, CO 80237
ph. 303 741 3737
fax 303 694 3134

PROJECT

Parker Adventist
Hospital MOB III

9395 CROWN CREST BLVD.
PARKER, COLORADO 80138

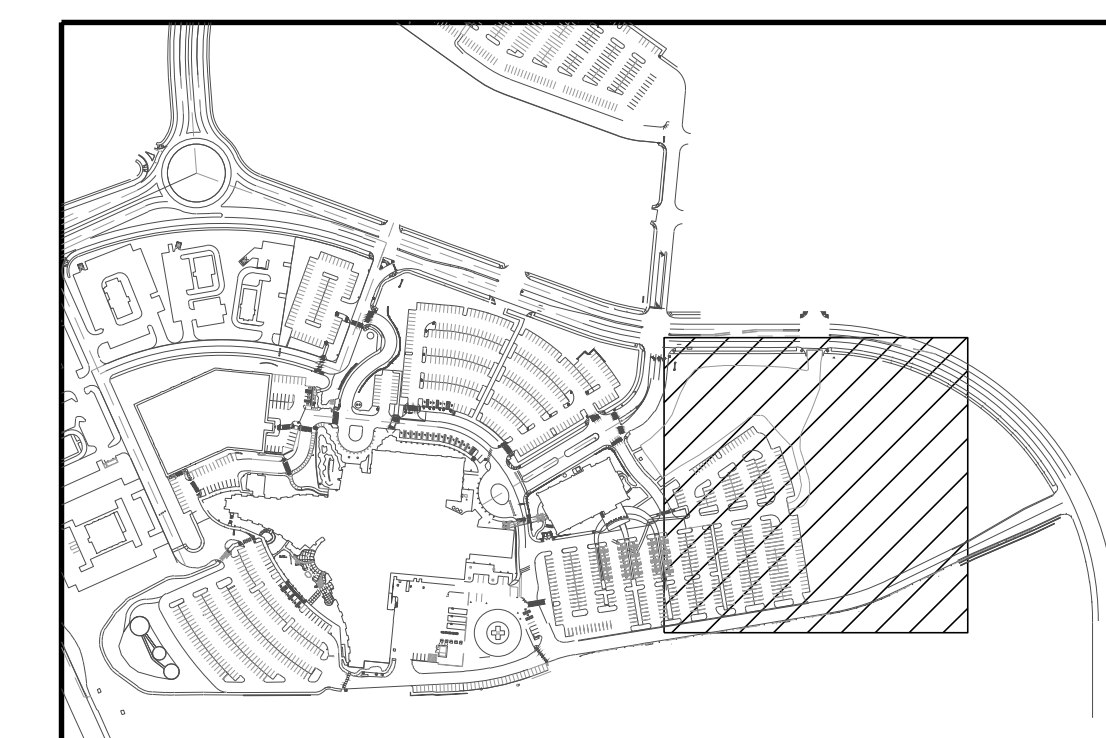
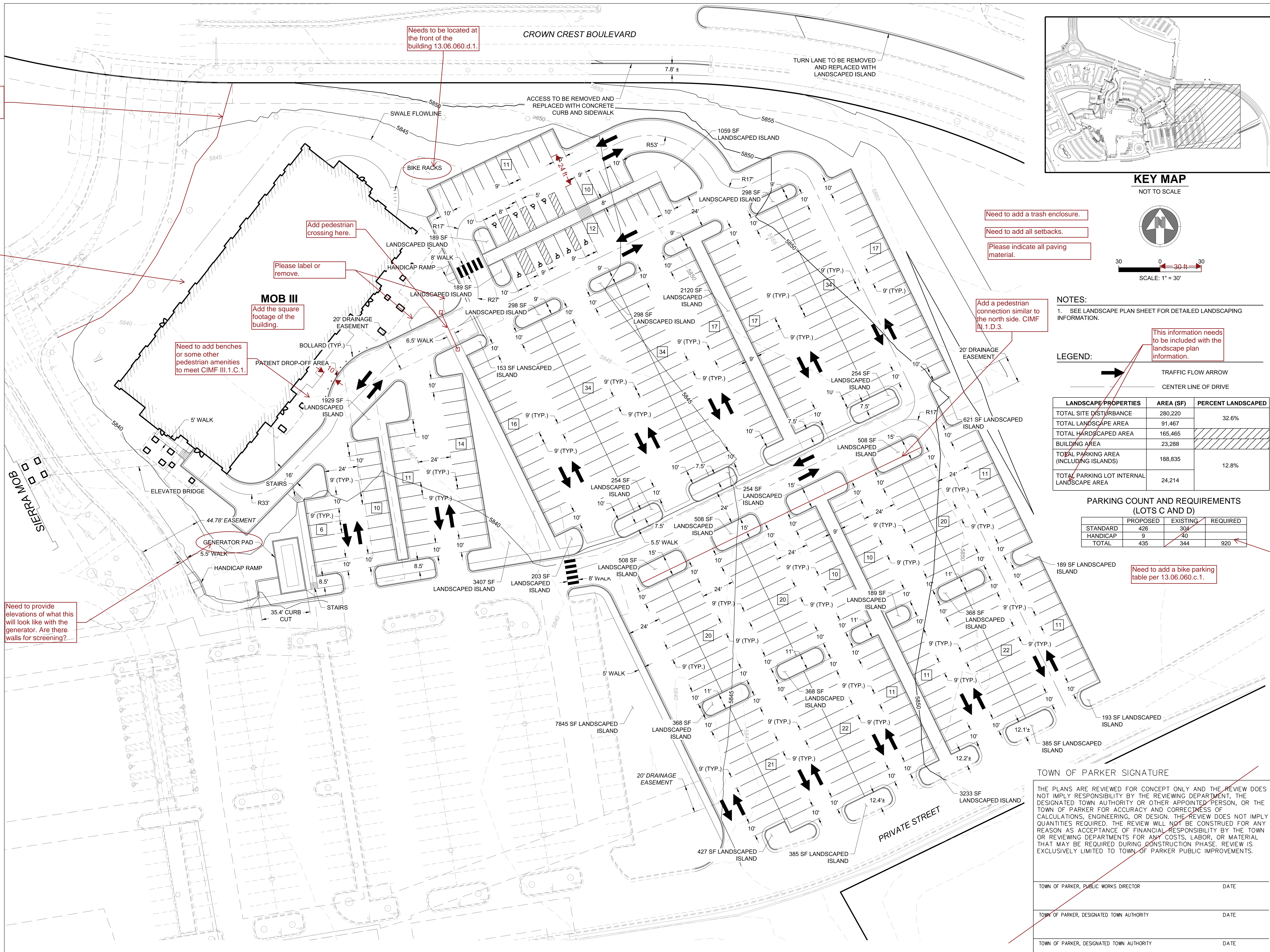
SITE PLAN
AMENDMENT

SHEET TITLE

COVER SHEET

SHEET NUMBER

1 OF 11



PARKER PROJECT NUMBER
SP18-
DRAWN BY
SSM
DATE
8/8/2018

REVISION	DESCRIPTION	DATE
0	INITIAL SUBMITTAL TO TOWN	8/8/18

- Need to add a trash enclosure.
- Need to add all setbacks.
- Please indicate all paving material.

NOTES:
1. SEE LANDSCAPE PLAN SHEET FOR DETAILED LANDSCAPING INFORMATION.

LEGEND:

	TRAFFIC FLOW ARROW
	CENTER LINE OF DRIVE

LANDSCAPE PROPERTIES	AREA (SF)	PERCENT LANDSCAPED
TOTAL SITE DISTURBANCE	280,220	
TOTAL LANDSCAPE AREA	91,467	32.6%
TOTAL HARDCAPE AREA	165,465	
BUILDING AREA	23,288	
TOTAL PARKING AREA (INCLUDING ISLANDS)	188,835	12.8%
TOTAL PARKING LOT INTERNAL LANDSCAPE AREA	24,214	

PARKING COUNT AND REQUIREMENTS (LOTS C AND D)

	PROPOSED	EXISTING	REQUIRED
STANDARD	426	304	
HANDICAP	9	40	
TOTAL	435	344	920

S.A. MIRO, INC.
CONSULTING ENGINEERS
4582 South Ulster Street Pkwy.
Suite 750 Denver, CO 80237
ph. 303 741 3737
fax 303 694 3134

9 HANDICAP
426 STANDARD
83 REMOVED
435 TOTAL

PROJECT
Parker Adventist Hospital MOB III
9395 CROWN CREST BLVD.
PARKER, COLORADO 80138

SITE PLAN AMENDMENT

TOWN OF PARKER SIGNATURE

THE PLANS ARE REVIEWED FOR CONCEPT ONLY AND THE REVIEW DOES NOT IMPLY RESPONSIBILITY BY THE REVIEWING DEPARTMENT, THE DESIGNATED TOWN AUTHORITY OR OTHER APPOINTED PERSON, OR THE TOWN OF PARKER FOR ACCURACY AND CORRECTNESS OF CALCULATIONS, ENGINEERING, OR DESIGN. THE REVIEW DOES NOT IMPLY QUANTITIES REQUIRED. THE REVIEW WILL NOT BE CONSTRUED FOR ANY REASON AS ACCEPTANCE OF FINANCIAL RESPONSIBILITY BY THE TOWN OR REVIEWING DEPARTMENTS FOR ANY COSTS, LABOR, OR MATERIAL THAT MAY BE REQUIRED DURING CONSTRUCTION PHASE. REVIEW IS EXCLUSIVELY LIMITED TO TOWN OF PARKER PUBLIC IMPROVEMENTS.

TOWN OF PARKER, PUBLIC WORKS DIRECTOR	DATE
TOWN OF PARKER, DESIGNATED TOWN AUTHORITY	DATE
TOWN OF PARKER, DESIGNATED TOWN AUTHORITY	DATE

SHEET TITLE
SITE PLAN
SHEET NUMBER
2 of 11

CROWN CREST BOULEVARD

REPLACE 4 TOTAL DEAD STREET TREES 2-SW

Need to show these on the site plan and provide elevations.

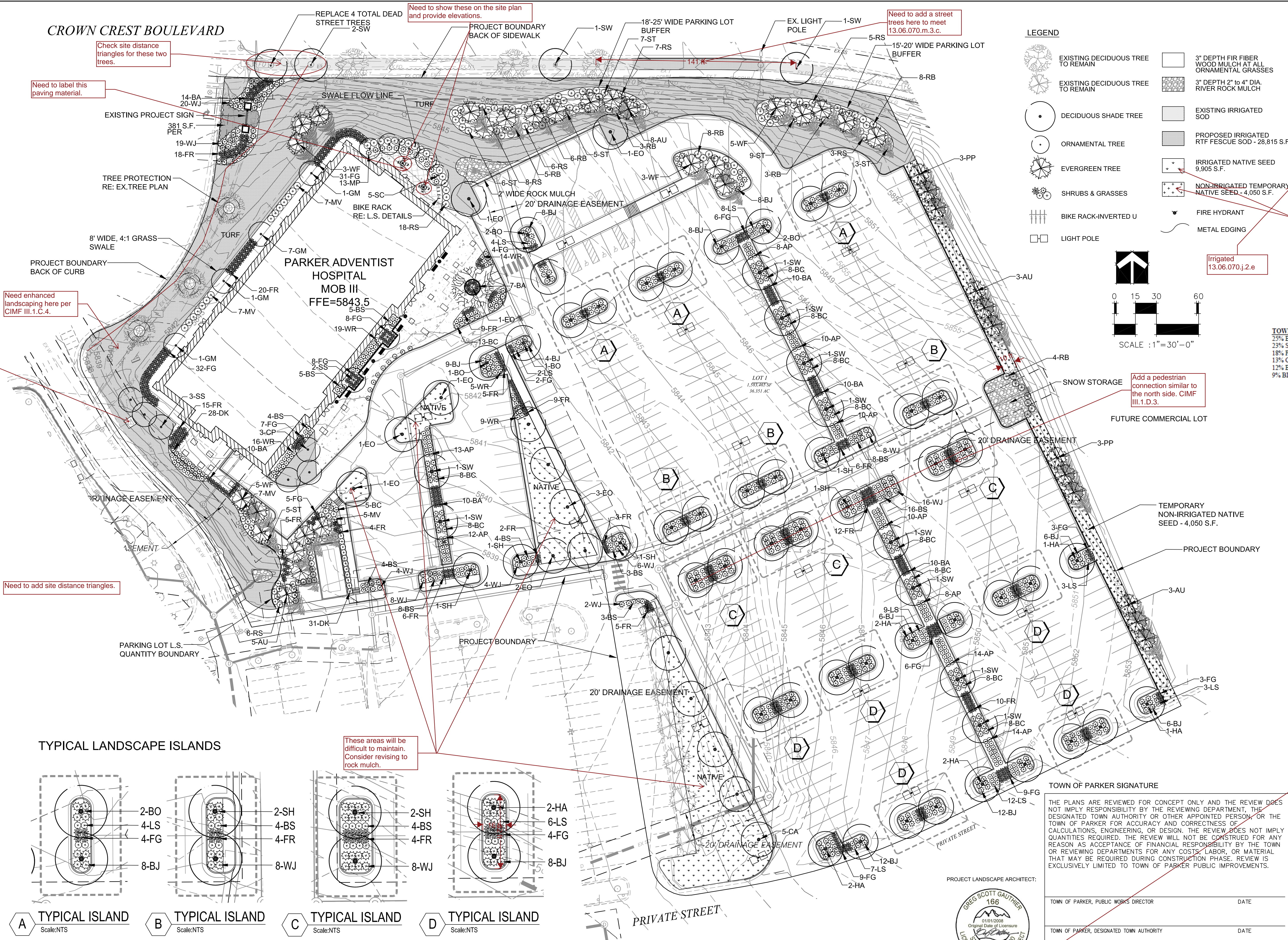
Need to add a street trees here to meet 13.06.070.m.3.c.

Need to label this paving material.

Check site distance triangles for these two trees.

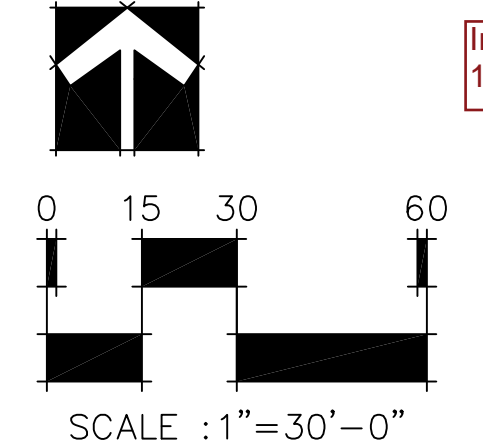
Need enhanced landscaping here per CIMF III.1.C.4.

Need to screen this transformer.



LEGEND

- EXISTING DECIDUOUS TREE TO REMAIN
- EXISTING DECIDUOUS TREE TO REMAIN
- DECIDUOUS SHADE TREE
- ORNAMENTAL TREE
- EVERGREEN TREE
- SHRUBS & GRASSES
- BIKE RACK-INVERTED U
- LIGHT POLE
- 3" DEPTH FIR FIBER WOOD MULCH AT ALL ORNAMENTAL GRASSES
- 3" DEPTH 2" TO 4" DIA. RIVER ROCK MULCH
- EXISTING IRRIGATED SOD
- PROPOSED IRRIGATED RTF FESCUE SOD - 28,815 S.F.
- IRRIGATED NATIVE SEED 9,905 S.F.
- NON-IRRIGATED TEMPORARY NATIVE SEED - 4,050 S.F.
- FIRE HYDRANT
- METAL EDGING



PARKER PROJECT NUMBER
SP18-

DRAWN BY
GSG

DATE
8/8/2018

TOWN OF PARKER, SEED MIX 1
20% CANADA WILDRYE
15% CRESTED WHEATGRASS
15% SLENDER WHEATGRASS
10% ANNUAL RYEGRASS
10% SHEEP FESCUE
10% BIG BLUESTEM
10% SIDEOATS GRAMA
5% CANADA BLUEGRASS
5% BLUE GRAMA

TOWN OF PARKER, SEED MIX 2
22% SLENDER WHEATGRASS
18% SODAR STREAMBANK WHEATGRASS
13% ARIZONA FESCUE
13% BLUE GRAMA
12% BUFFALOGRASS
12% BARLEY OR OATS
5% SPIKE MUHLY
5% INDIAN RICEGRASS

TOWN OF PARKER, SEED MIX 3 (LOW-GROWTH MIX)
25% EPHRAIM CRESTED WHEATGRASS
23% SHEEP FESCUE
18% PERENNIAL RYEGRASS
13% CANADA BLUEGRASS
12% BARLEY OR OATS
9% BLUE FESCUE

M.I.R.O.
S.A. MIRO, INC.
CONSULTING ENGINEERS
4582 South Ulster Street Pkwy.
Suite 750 Denver, CO 80237
ph. 303 741 3737
fax 303 694 3134

GROUND LOGIC, INC.
LANDSCAPE ARCHITECTURE
IRRIGATION DESIGN
SITE DESIGN & GIS

GROUND LOGIC, INC.
2038 Grove Street
Boulder, Colorado 80302
P. 303-739-8333
F. 888-665-6442
office@groundlogic.com

PROJECT
Parker Adventist Hospital MOB III
9395 CROWN CREST BLVD.
PARKER, COLORADO 80138

SITE PLAN AMENDMENT

TOWN OF PARKER SIGNATURE

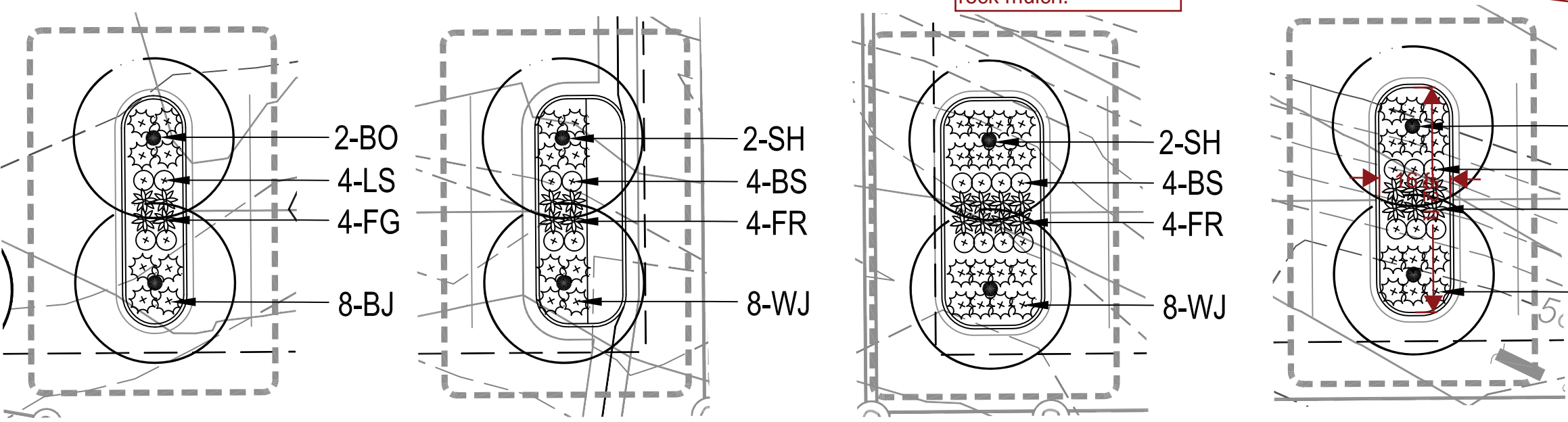
THE PLANS ARE REVIEWED FOR CONCEPT ONLY AND THE REVIEW DOES NOT IMPLY RESPONSIBILITY BY THE REVIEWING DEPARTMENT, THE DESIGNATED TOWN AUTHORITY OR OTHER APPOINTED PERSON, OR THE TOWN OF PARKER FOR ACCURACY AND CORRECTNESS OF CALCULATIONS, ENGINEERING, OR DESIGN. THE REVIEW DOES NOT IMPLY QUANTITIES REQUIRED. THE REVIEW WILL NOT BE CONSTRUED FOR ANY REASON AS ACCEPTANCE OF FINANCIAL RESPONSIBILITY BY THE TOWN OR REVIEWING DEPARTMENTS FOR ANY COSTS, LABOR, OR MATERIAL THAT MAY BE REQUIRED DURING CONSTRUCTION PHASE. REVIEW IS EXCLUSIVELY LIMITED TO TOWN OF PARKER PUBLIC IMPROVEMENTS.

TOWN OF PARKER, PUBLIC WORKS DIRECTOR	DATE
TOWN OF PARKER, DESIGNATED TOWN AUTHORITY	DATE
TOWN OF PARKER, DESIGNATED TOWN AUTHORITY	DATE

LANDSCAPE PLAN

SHEET NUMBER

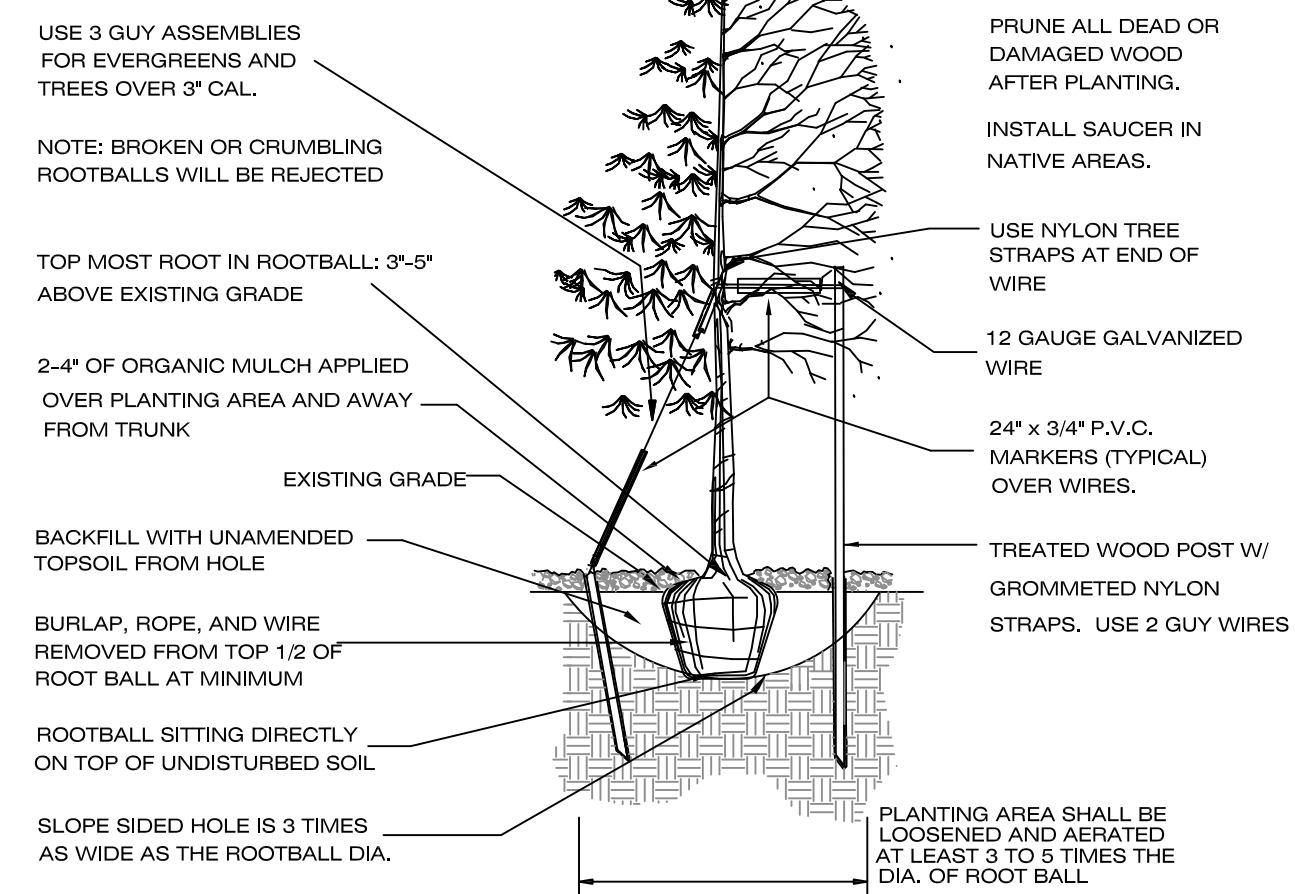
TYPICAL LANDSCAPE ISLANDS



A TYPICAL ISLAND Scale: NTS
B TYPICAL ISLAND Scale: NTS
C TYPICAL ISLAND Scale: NTS
D TYPICAL ISLAND Scale: NTS



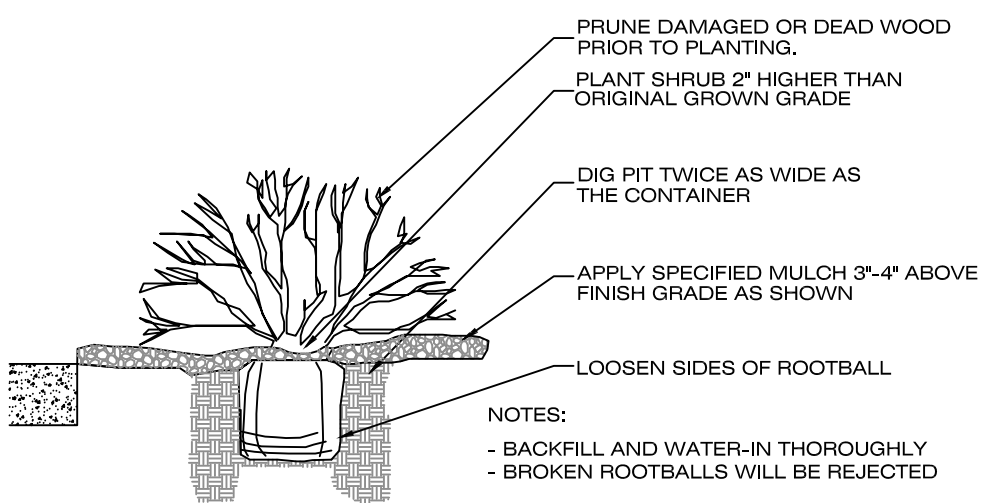
TOWN OF PARKER TREE PLANTING DETAIL



TREE PLANTING NOTES:

- EXCAVATE PLANTING HOLES WITH SLOPING SIDES. DO NOT DISTURB SOIL AT BOTTOM OF PLANTING HOLES, BUT DO SCORE THE SIDES OF THE PLANTING HOLE. MAKE EXCAVATIONS AT LEAST THREE TIMES AS WIDE AS THE ROOT BALL DIAMETER AND LESS (3 TO 5 INCHES) THAN THE DISTANCE FROM THE TOP MOST ROOT IN THE ROOT BALL AND THE BOTTOM OF THE ROOT BALL. THE PLANTING AREA SHALL BE LOOSENED AND AERATED AT LEAST THREE TO FIVE TIMES THE DIAMETER OF THE ROOT BALL. BACKFILL SHALL CONSIST OF EXISTING ON SITE SOIL - NO AMENDMENTS SHALL BE USED UNLESS OTHERWISE SPECIFIED.
- TREES SHALL BE PLANTING WITH THE TOP MOST ROOT IN THE ROOT BALL 3" TO 5" HIGHER THAN THE FINISHED LANDSCAPE GRADE. THIS INCLUDES TREES THAT ARE SET ON SLOPES. SET ROOT BALL ON UNDISTURBED SOIL. TREE WHERE THE TRUNK FLARE IS NOT VISIBLE SHALL BE REJECTED. DO NOT COVER THE ROOT BALL WITH SOIL.
- CUT OFF BOTTOM 1/2 OF WIRE BASKET BEFORE PLACING TREE IN HOLE. CUT OFF REMAINDER OF BASKET AFTER TREE IS SET IN HOLE. REMOVE BASKET COMPLETELY WHERE POSSIBLE. REMOVE ALL NYLON TIES, TWINE, ROPE AND BURLAP POSSIBLE. REMOVE UNNECESSARY PACKING MATERIAL.
- FORM SOIL INTO A 3" TO 5" TALL WATERING RING (SAUCER) AROUND PLANTING AREA. THIS IS NOT NECESSARY IN IRRIGATED TURF AREAS. APPLY 3" TO 4" DEPTH OF SPECIFIED MULCH INSIDE WATERING RING.
- STAKING AND GUYING OF TREES IS OPTIONAL IN MOST PLANTING SITUATIONS. IN AREAS OF EXTREME WINDS, OR ON STEEP SLOPES, STAKING MAY BE NECESSARY TO STABILIZE TREES. STAKING AND GUYING MUST BE REMOVED WITHIN 1 YEAR OR LESS OF PLANTING DATE.
- TREE WRAP IS NOT TO BE USED ON ANY NEW PLANTINGS, EXCEPT IN LATE FALL PLANTING SITUATIONS, AND ONLY THEN AFTER CONSULTING THE TOWN ARBORIST.
- RESETTING IMPROPERLY PLANTED TREE WILL ONLY BE ALLOWED IF IT IS DETERMINED THAT DOING SO WILL NOT IN ANY WAY COMPROMISE THE ROOTBALL, AND SHALL ONLY BE DONE WITH THE APPROVAL OF THE TOWN ARBORIST.

1 TREE PLANTING DETAIL



2 SHRUB PLANTING DETAIL

LANDSCAPE NOTES

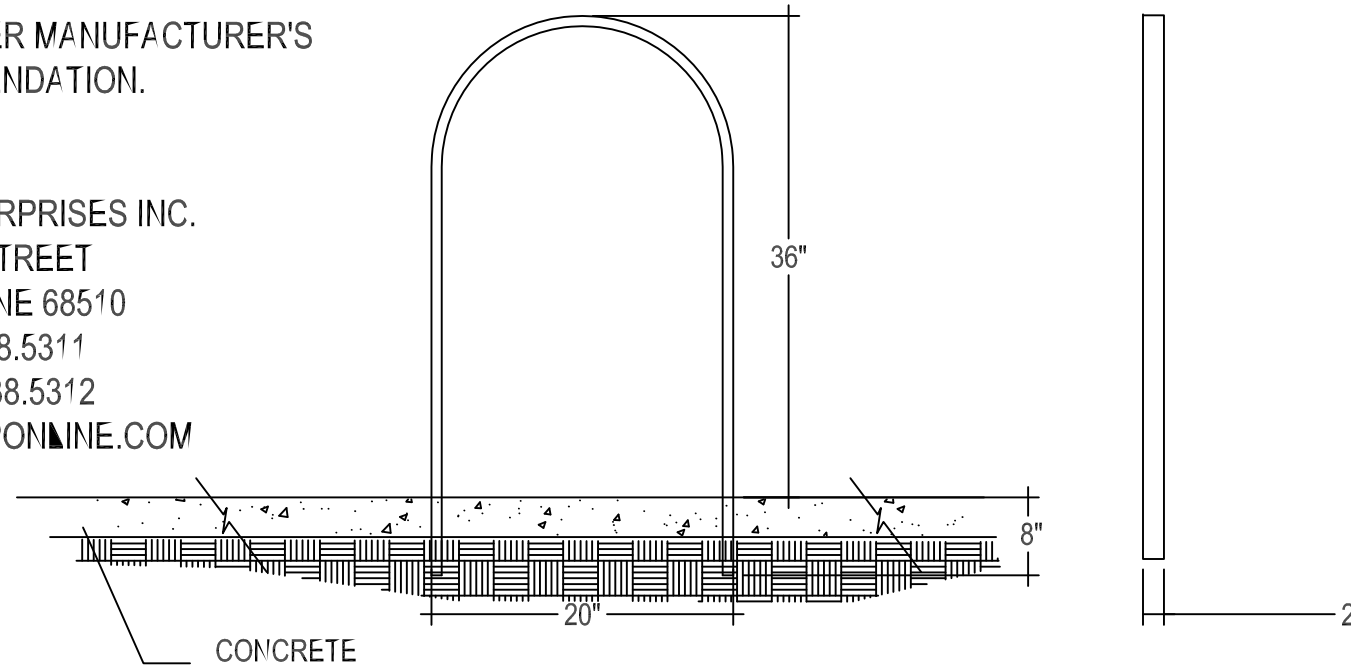
- PLANT SPECIES AND LOCATION SHOULD FOLLOW APPROVED PLAN. IF SITE CONDITIONS OR PLANT AVAILABILITY REQUIRE CHANGES TO THE PLAN THE APPLICANT MUST GET APPROVAL FROM THE TOWN OF PARKER, COMMUNITY DEVELOPMENT DEPARTMENT.
- TO THE MAXIMUM EXTENT FEASIBLE, TOPSOIL THAT IS REMOVED DURING CONSTRUCTION ACTIVITY SHOULD BE CONSERVED FOR LATER USE ON AREAS REQUIRING REVEGETATION AND LANDSCAPING.
- ALL PLANT MATERIAL SHALL CARRY A WARRANTY FOR A PERIOD OF NOT LESS THAT 1 YEAR AFTER ACCEPTANCE OF THE PROJECT BY THE OWNER. WARRANTY SHALL BE A ONE TIME REPLACEMENT THAT INCLUDES MATERIALS AND LABOR COSTS.
- SHRUB BEDS SHALL BE PREPARED WITH ORGANIC MATTER AT THE RATE OF 3 CUBIC YARDS PER 1,000 S.F.. THE ORGANIC MATTER SHALL BE THOROUGHLY INCORPORATED INTO THE TOP 6" OF SOIL.
- TREE RINGS TO BE MULCHED WITH WOOD MULCH.
- IRRIGATION DESIGN AND CONSTRUCTION SHALL BE IN CONFORMANCE TO TOWN OF PARKER CONSTRUCTION SPECIFICATIONS AND DESIGN CONSIDERATIONS FOR PARKS, TRAILS, AND STREETSCAPES MANUAL APPROVED JULY, 1997 AND RE-VEGETATION STANDARDS AS PROVIDED IN THE STORM DRAINAGE AND ENVIRONMENTAL CRITERIA MANUAL, AS AMENDED. DRIP IRRIGATION TO BE PROVIDED TO ALL PLANT MATERIAL AND TEMPORARY SPRAY/ROTOR IRRIGATION TO SEEDED AREAS. TEMPORARY IRRIGATION MAY BE REMOVED IMMEDIATELY AFTER ESTABLISHMENT IS COMPLETE, OR IN ANY CASE, NO LONGER THAN ONE (1) YEAR PER MUNICIPAL CODE 13.06.070(j).
- ALL TREES WILL EITHER BE STAKED USING TWO LODGEPOLE STAKES OR GUYES USING 3 -12GA. GALVANIZED WIRE GUYES ATTACHED TO BURIED STAKES.
- ALL SHRUB BEDS ARE TO BE CONTAINED WITH STEEL EDGER (3/16"x4") NOT REQUIRED AT CURB, WALK, OR BUILDING. EDGER TO BE ROLL TOPPED STEEL EDGING OR APPROVED EQUAL.
- SOIL RETENTION BLANKETS ARE REQUIRED ON ALL SLOPES 3:1 OR STEEPER AND SHALL BE PLACED INTO THE FLOW LINES OF DITCHES AND SWALES STEEPER THAN 2% (BY OTHERS).
- ALL TREES MUST BE A MINIMUM OF 7' AWAY FROM ANY WATER AND SANITARY SEWER MAIN.
- ALL LANDSCAPE ISLAND BEDS SHALL HAVE 3"-6" COBBLE INSTALLED OVER LANDSCAPE FABRIC. COBBLE COLOR TO MATCH EXISTING BEDS.
- IF THERE IS A DISCREPANCY BETWEEN THE PLANT COUNTS AND THE CALL-OUTS ON THE PLANS, THE ACTUAL NUMBER OF PLANT SYMBOLS DEPICTED ON THE PLANS SHALL PREVAIL.

NOTE:

MATERIALS: FRAME 1/2" X 2" STEEL FLAT BAR.
Model # - 11-02-PF
Collection: Elements
Product Type: Bike Rack
Product Color: Silver

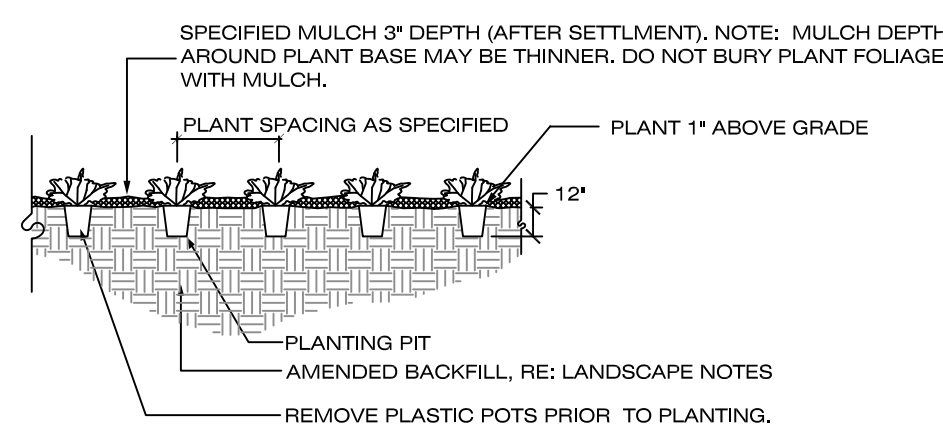
MOUNT PER MANUFACTURER'S RECOMMENDATION.

CONTACT:
BRP ENTERPRISES INC.
3200 "O" STREET
LINCOLN, NE 68510
PH. 888.438.5311
FAX 888.438.5312
WWW.BRPONLINE.COM



4 BIKE RACK DETAIL

3 GROUND COVER / PERENNIAL PLANTING DETAIL



PLANT LIST

CODE	QTY.	BOTANIC NAME	COMMON NAME	SIZE	HEIGHT	WIDTH
DECIDUOUS TREES						
SH	17	GLEDITSIA TRIACANTHOS INERMINS 'SHADEMASTER'	SHADEMASTER HONEYLOCUST	2.5" CAL. B&B	60'	20'
BO	12	QUERCUS MACROCARPA	BUR OAK	2.5" CAL. B&B	60'	40'
HA	18	CELTIS OCCIDENTALIS	WESTERN HACKBERRY	2.5" CAL. B&B	60'	40'
EO	11	QUERCUS ROBUR	ENGLISH OAK	2.5" CAL. B&B	60'	40'
SW	16	QUERCUS BICOLOR	SWAMP WHITE OAK	2.5" CAL. B&B	70'	45'
CA	5	CATALPA SPECIOSA	CATALPA	2.5" CAL. B&B	70'	45'
	79	SUBTOTAL				
ORNAMENTAL TREES						
CP	3	PYRUS CALLERYANA 'CLEVELAND SELECT'	CHANTICLEER PEAR	2" CAL. B&B	25'	20'
GM	4	ACER GINNALA	GINNALA MAPLE	2" CAL. B&B	15'	15'
SS	5	MALUS 'SPRING SNOW'	SPRING SNOW CRABAPPLE	2" CAL. B&B	20'	15'
SC	5	MALUS SARGENTII	SARGENT CRABAPPLE	2" CAL. B&B	10'	10'
	17	SUBTOTAL				
	96	TOTAL DECIDUOUS TREES				
EVERGREEN TREES						
WF	16	ABIES CONCOLOR	WHITE FIR	8" HT. B&B	40'	20'
AU	19	PINUS NIGRA	AUSTRIAN PINE	8" HT. B&B	40'	25'
PP	6	PINUS EDULIS	PINION PINE	8" HT. B&B	35'	20'
	41	TOTAL EVERGREEN TREES				
	137	TOTAL TREES				
DECIDUOUS SHRUBS						
BS	96	CARYOPTERIS X CLANDONENSIS 'DARK NIGHT'	BLUEMIST SPIREA	#5 CONT.	4'	4'
AP	99	PONTENTILLA FRUTICOSA 'ABBOTSWOOD'	ABBOTSWOOD POTENTILLA	#5 CONT.	3'	3'
LS	80	SPIREA JAPANICA 'LITTLE PRINCESS'	LITTLE PRINCESS SPIREA	#5 CONT.	3'	4'
RS	53	PEROVSKIA ATRIPLICIFOLIA	RUSSIAN SAGE	#5 CONT.	4'	4'
LP	0	LIGUSTRUM VULGARE 'LODENSE'	LODENSE PRIVET	#5 CONT.	5'	5'
DK	59	SYRINGA MEYERI	DWARF KOREAN LILAC	#5 CONT.	5'	5'
WR	63	ROSA 'WINNIPEG PARKS'	WINNIPEG PARKS ROSE	#5 CONT.	3'	3'
ST	35	RHUS TYPHINA	STAGHORN SUMAC	#5 CONT.	8'	5'
RB	37	CHRYSOTHAMNUS NAUSEOSUS	RABBITBRUSH	#5 CONT.	6'	5'
MV	26	VIBURNUM LANTANA 'MOHICAN'	MOHICAN VIBURNUM	#5 CONT.	4'	6'
	558	SUBTOTAL				
EVERGREEN SHRUBS						
WJ	123	JUNIPERUS HORIZONTALIS 'WILTONII'	WILTON CARPET JUNIPER	#5 CONT.	6"	6"
BC	98	JUNIPERUS HORIZONTALIS 'BLUE CHIP'	BLUE CHIP JUNIPER	#5 CONT.	2'	5'
BJ	163	JUNIPERUS SABINA 'BUFFALO'	BUFFALO JUNIPER	#5 CONT.	2'	5'
MP	13	PINUS MUGO VAR. PUMILIO	DWARF MUGO PINE	#5 CONT.	2'	5'
	397	SUBTOTAL				
	955	TOTAL 5 GALLON SHRUBS				
ORNAMENTAL GRASSES						
FG	175	PENNISETUM ALOPECUROIDES 'HAMELN'	HARDY FOUNTAIN GRASS	#5 CONT.	2'	2'
BA	71	HELICTOTRICHON SEMPERVIRENS	BLUE AVENA GRASS	#5 CONT.	3'	4'
FR	165	CALAMAGROSTIS X ACUTIFLORA 'KARL FOERSTER'	FEATHER REED GRASS	#5 CONT.	4'	2'
	411	TOTAL 5 GALLON GRASSES				

LANDSCAPE CODE REQUIREMENT

SITE PERIMETER LANDSCAPE REQUIREMENT

Area of Landscaping	Lineal Feet of Frontage	Formula	Trees Required	Trees Provided	Shrubs Required	Shrubs Provided	% Evergreen
North Perimeter	470	1 Tree / 5 Shrubs per 40 l.f.	12	12	59	74	100%
West Perimeter	236	1 Tree / 5 Shrubs per 40 l.f.	6	6	30	39	50
Southwest Perimeter	223	1 Tree / 5 Shrubs per 40 l.f.	6	6	28	28	50
Total for Perimeters			23	24	116	141	75

*Increase in evergreen species from 60 to 100% is proposed for additional screening along Crown Crest Blvd.

Note: Building foundation and patio planter landscape totals are not included in the above quantities.

PARKING LOT INTERIOR LANDSCAPE REQUIREMENT

Area of Landscaping	Each	Formula	Square Footage	Trees Required	Trees Provided	Shrubs Required	Shrubs Provided
Interior Parking Lot Islands	57	1 Tree / 5 Shrubs per 182 s.f.	9291	57	54	285	285
Additional Parking Lot Area	-	1 Shrub / add. 15 s.f.	14923	-	38	995	645
Total Landscaping			24214	57	92*	1280	930
						350	
							1280

* A total of 35 additional trees have been applied to the shrub count

LIVING VS. NON-LIVING LANDSCAPE REQUIREMENT

Area of Landscaping	S.F.	% Living	% non-Living
Interior Parking Lot Islands	24,214	91	9
Remaining Landscape Areas	67,253	81	19
Total Landscape Areas	91,467		

PROJECT LANDSCAPE ARCHITECT:



Need to add maintenance notes from 13.06.070.k.

Need to add details for all pedestrian amenities.

TOWN OF PARKER SIGNATURE

THE PLANS ARE REVIEWED FOR CONCEPT ONLY AND THE REVIEW DOES NOT IMPLY RESPONSIBILITY BY THE REVIEWING DEPARTMENT. THE DESIGNATED TOWN AUTHORITY OR OTHER APPOINTED PERSON, OR THE TOWN OF PARKER FOR ACCURACY AND CORRECTNESS OF CALCULATIONS, ENGINEERING, OR DESIGN. THE REVIEW DOES NOT IMPLY QUANTITIES REQUIRED. THE REVIEW WILL NOT BE CONSTRUED FOR ANY REASON AS ACCEPTANCE OF FINANCIAL RESPONSIBILITY BY THE TOWN OR REVIEWING DEPARTMENTS FOR ANY COSTS, LABOR, OR MATERIAL THAT MAY BE REQUIRED DURING CONSTRUCTION PHASE. REVIEW IS EXCLUSIVELY LIMITED TO TOWN OF PARKER PUBLIC IMPROVEMENTS.

TOWN OF PARKER, PUBLIC WORKS DIRECTOR	DATE
TOWN OF PARKER, DESIGNATED TOWN AUTHORITY	DATE
TOWN OF PARKER, DESIGNATED TOWN AUTHORITY	DATE

PARKER PROJECT NUMBER
SP18-

DRAWN BY
GSG

DATE
8/8/2018

REVISION DESCRIPTION DATE
INITIAL SUBMITTAL TO TOWN 8/8/18



S.A. MIRO, INC.
CONSULTING ENGINEERS
4582 South Ulster Street Pkwy.
Suite 750 Denver, CO 80237
ph. 303 741 3737
fax 303 694 3134

GROUND LOGIC INC.
LANDSCAPE ARCHITECTURE
IRRIGATION DESIGN
SITE DESIGN & GIS

GROUND LOGIC, INC.
2038 Grove Street
Boulder, Colorado 80302
P. 303-733-8333
F. 888-665-6442
office@groundlogic.com

PROJECT

Parker Adventist Hospital MOB III

9395 CROWN CREST BLVD.
PARKER, COLORADO 80138

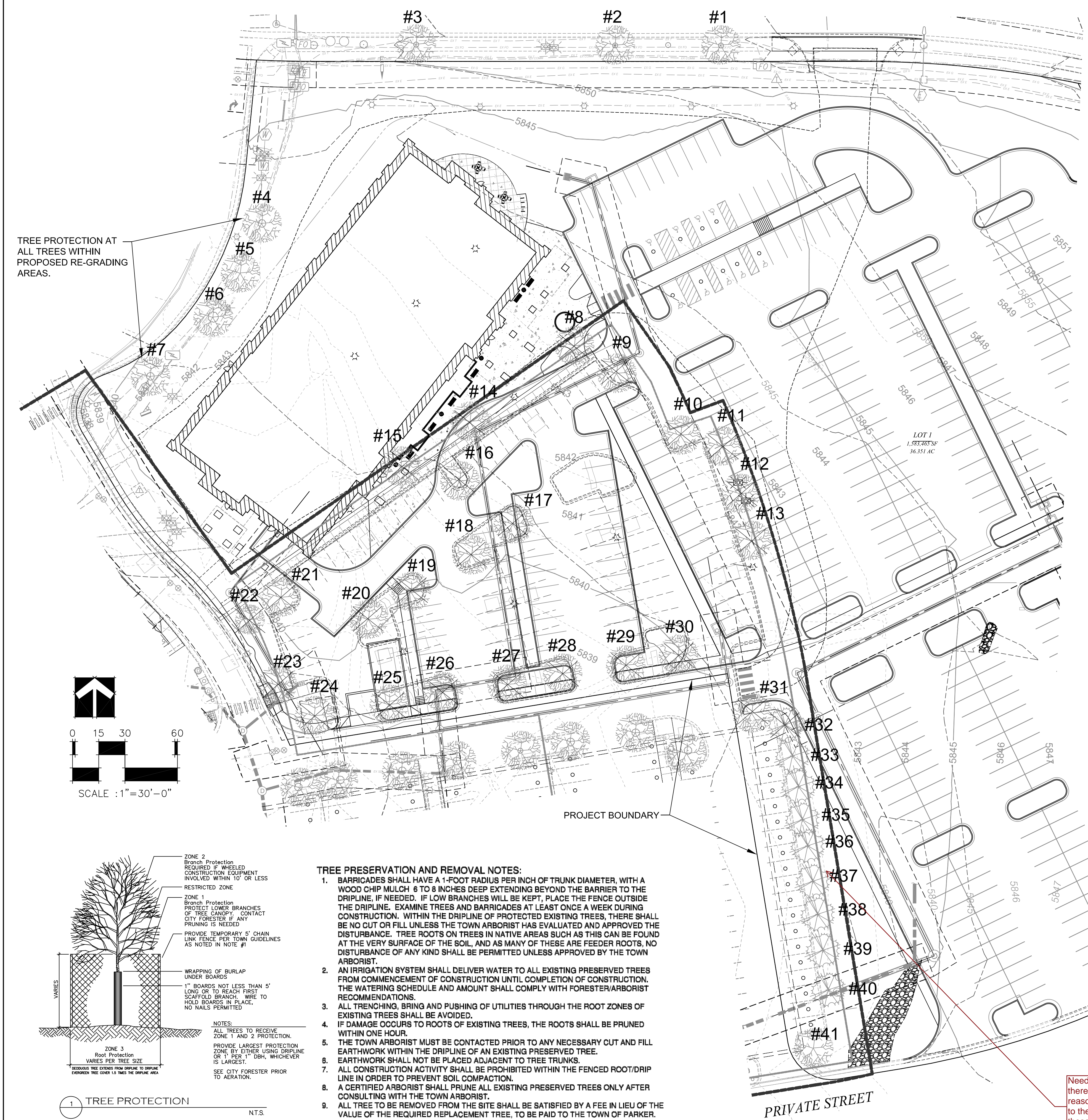
SITE PLAN
AMENDMENT

SHEET TITLE

LANDSCAPE NOTES AND DETAILS

SHEET NUMBER

4 OF 11



- LEGEND**
- EXISTING DECIDUOUS TREE TO REMAIN
 - EXISTING DECIDUOUS TREE TO BE REMOVED
 - EXISTING EVERGREEN TREE TO REMAIN
 - EXISTING EVERGREEN TREE TO BE REMOVED

Add a column to indicate if the tree will be removed or if it will remain.
13.10.110.e.3.b.

EXISTING TREE SURVEY					
LABEL	DESCRIPTION	SIZE	UNIT	REMARKS	
#1	HACKBERRY	2	INCH	CALIPER	
#2	HACKBERRY	2	INCH	CALIPER	
#3	HACKBERRY	2	INCH	CALIPER	
#4	RED SUNSET MAPLE	2.5	INCH	CALIPER	
#5	RED SUNSET MAPLE	2.5	INCH	CALIPER	
#6	HACKBERRY	5.0	INCH	CALIPER	
#7	SPRING SNOW CRABAPPLE	4.0	INCH	CALIPER	
#8	SHADEMASTER HONEYLOCUST	4.0	INCH	CALIPER	
#9	WESTERN HACKBERRY	3.0	INCH	CALIPER	
#10	WESTERN HACKBERRY	3.0	INCH	CALIPER	DEAD
#11	SHADEMASTER HONEYLOCUST	3.0	INCH	CALIPER	
#12	GINNALA MAPLE	2.0	INCH	HEIGHT	CLUMP
#13	OAK	3.0	INCH	CALIPER	
#14	SHADEMASTER HONEYLOCUST	3.0	INCH	CALIPER	
#15	SHADEMASTER HONEYLOCUST	3.0	INCH	CALIPER	
#16	PEAR	2.0	INCH	CALIPER	
#17	HACKBERRY	4.0	INCH	CALIPER	TOP DEAD
#18	HACKBERRY	4.0	INCH	CALIPER	TOP DEAD
#19	PEAR	2.0	INCH	CALIPER	DEAD
#20	PEAR	2.0	INCH	CALIPER	DEAD
#21	RED SUNSET MAPLE	3.5	INCH	CALIPER	
#22	SPRING SNOW CRABAPPLE	4.5	INCH	CALIPER	
#23	HACKBERRY	4.5	INCH	CALIPER	
#24	HACKBERRY	5.0	INCH	CALIPER	
#25	PEAR	2.0	INCH	CALIPER	
#26	PEAR	2.0	INCH	CALIPER	
#27	HACKBERRY	3.0	INCH	CALIPER	
#28	HACKBERRY	3.0	INCH	CALIPER	
#29	SPRING SNOW CRABAPPLE	4.0	INCH	CALIPER	
#30	HACKBERRY	2.5	INCH	CALIPER	
#31	HACKBERRY	4.0	INCH	CALIPER	TOP DEAD
#32	AUSTRIAN PINE	20.0	FOOT	HEIGHT	
#33	AUSTRIAN PINE	15.0	FOOT	HEIGHT	
#34	AUSTRIAN PINE	20.0	FOOT	HEIGHT	
#35	AUSTRIAN PINE	20.0	FOOT	HEIGHT	
#36	AUSTRIAN PINE	15.0	FOOT	HEIGHT	
#37	AUSTRIAN PINE	15.0	FOOT	HEIGHT	
#38	RED SUNSET MAPLE	15.0	FOOT	HEIGHT	
#39	AUSTRIAN PINE	15.0	FOOT	HEIGHT	
#40	AUSTRIAN PINE	20.0	FOOT	HEIGHT	
#41	HACKBERRY	5.0	INCH	CALIPER	
81.0	TOTAL INCHES OF DECIDUOUS TREE REMOVAL				
155.0	TOTAL FEET OF EVERGREEN TREE REMOVAL				

Only trees regulated by 13.10.110.e.

Page 1

Need to add the monetary value as determined by a certified arborist of the trees and if removed, will be required to pay a fee equal to the value of the trees.
13.10.110.f.2.

EX TREES

Need to demonstrate there is not a reasonable alternative to the removal of these trees.
13.10.110.e.2.



THE PLANS ARE REVIEWED FOR CONCEPT ONLY AND THE REVIEW DOES NOT IMPLY RESPONSIBILITY BY THE REVIEWING DEPARTMENT, THE DESIGNATED TOWN AUTHORITY OR OTHER APPOINTED PERSON, OR THE TOWN OF PARKER FOR ACCURACY AND CORRECTNESS OF CALCULATIONS, ENGINEERING, OR DESIGN. THE REVIEW DOES NOT IMPLY QUANTITIES REQUIRED. THE REVIEW WILL NOT BE CONSTRUED FOR ANY REASON AS ACCEPTANCE OF FINANCIAL RESPONSIBILITY BY THE TOWN OR REVIEWING DEPARTMENTS FOR ANY COSTS, LABOR, OR MATERIAL THAT MAY BE REQUIRED DURING CONSTRUCTION PHASE. REVIEW IS EXCLUSIVELY LIMITED TO TOWN OF PARKER PUBLIC IMPROVEMENTS.

TOWN OF PARKER, PUBLIC WORKS DIRECTOR	DATE
TOWN OF PARKER, DESIGNATED TOWN AUTHORITY	DATE
TOWN OF PARKER, DESIGNATED TOWN AUTHORITY	DATE

PARKER PROJECT NUMBER
SP18-

DRAWN BY
GSG

DATE
8/8/2018

REVISION DESCRIPTION DATE
INITIAL SUBMITTAL TO TOWN 8/8/18

M I R O
S.A. MIRO, INC.
CONSULTING ENGINEERS
4582 South Ulster Street Pkwy.
Suite 750 Denver, CO 80237
ph. 303 741 3737
fax 303 694 3134

GROUND LOGIC INC.
LANDSCAPE ARCHITECTURE
IRRIGATION DESIGN
SITE DESIGN & GIS

PROJECT
Parker Adventist Hospital MOB III
9395 CROWN CREST BLVD.
PARKER, COLORADO 80138

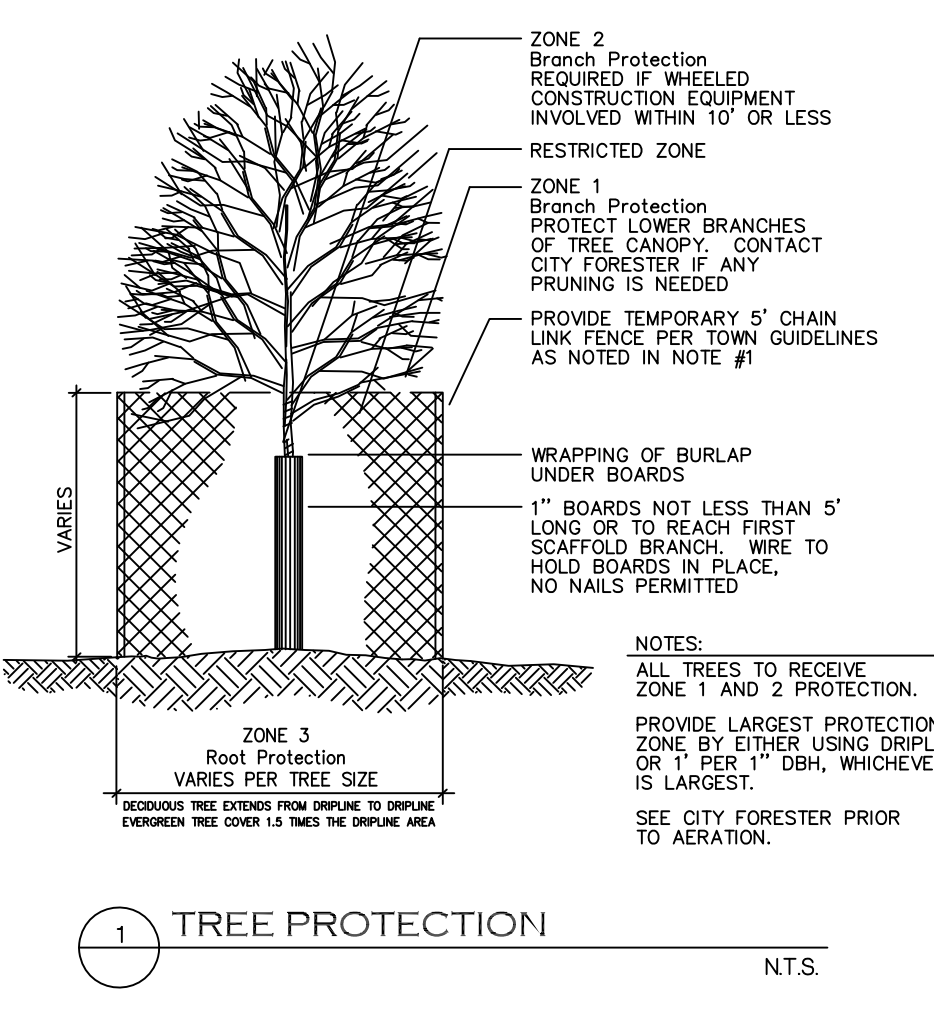
SITE PLAN AMENDMENT

SHEET TITLE
TREE PRESERVATION PLAN

SHEET NUMBER

5 OF 11

- TREE PRESERVATION AND REMOVAL NOTES:**
- BARRICADES SHALL HAVE A 1-FOOT RADIUS PER INCH OF TRUNK DIAMETER, WITH A WOOD CHIP MULCH 6 TO 8 INCHES DEEP EXTENDING BEYOND THE BARRIER TO THE DRIPLINE. IF NEEDED, IF LOW BRANCHES WILL BE KEPT, PLACE THE FENCE OUTSIDE THE DRIPLINE. EXAMINE TREES AND BARRICADES AT LEAST ONCE A WEEK DURING CONSTRUCTION. WITHIN THE DRIPLINE OF PROTECTED EXISTING TREES, THERE SHALL BE NO CUT OR FILL UNLESS THE TOWN ARBORIST HAS EVALUATED AND APPROVED THE DISTURBANCE. TREE ROOTS ON TREES IN NATIVE AREAS SUCH AS THIS CAN BE FOUND AT THE VERY SURFACE OF THE SOIL, AND AS MANY OF THESE ARE FEEDER ROOTS, NO DISTURBANCE OF ANY KIND SHALL BE PERMITTED UNLESS APPROVED BY THE TOWN ARBORIST.
 - AN IRRIGATION SYSTEM SHALL DELIVER WATER TO ALL EXISTING PRESERVED TREES FROM COMMENCEMENT OF CONSTRUCTION UNTIL COMPLETION OF CONSTRUCTION. THE WATERING SCHEDULE AND AMOUNT SHALL COMPLY WITH FORESTER/ARBORIST RECOMMENDATIONS.
 - ALL TRENCHING, BRING AND PUSHING OF UTILITIES THROUGH THE ROOT ZONES OF EXISTING TREES SHALL BE AVOIDED.
 - IF DAMAGE OCCURS TO ROOTS OF EXISTING TREES, THE ROOTS SHALL BE PRUNED WITHIN ONE HOUR.
 - THE TOWN ARBORIST MUST BE CONTACTED PRIOR TO ANY NECESSARY CUT AND FILL EARTHWORK WITHIN THE DRIPLINE OF AN EXISTING PRESERVED TREE.
 - EARTHWORK SHALL NOT BE PLACED ADJACENT TO TREE TRUNKS.
 - ALL CONSTRUCTION ACTIVITY SHALL BE PROHIBITED WITHIN THE FENCED ROOT/DRIPLINE IN ORDER TO PREVENT SOIL COMPACTION.
 - A CERTIFIED ARBORIST SHALL PRUNE ALL EXISTING PRESERVED TREES ONLY AFTER CONSULTING WITH THE TOWN ARBORIST.
 - ALL TREE TO BE REMOVED FROM THE SITE SHALL BE SATISFIED BY A FEE IN LIEU OF THE VALUE OF THE REQUIRED REPLACEMENT TREE, TO BE PAID TO THE TOWN OF PARKER.



1 TREE PROTECTION N.T.S.

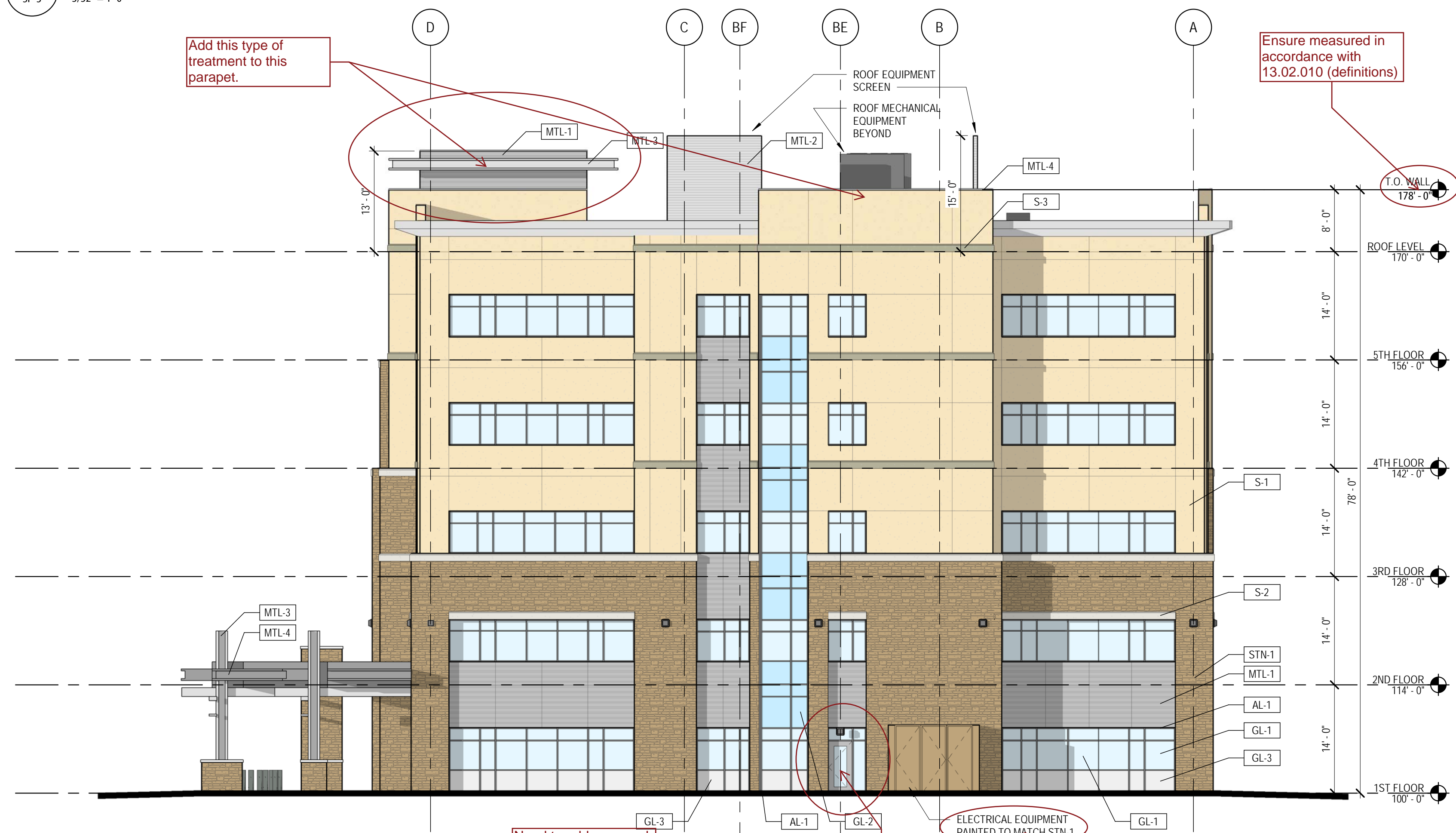
#	DESCRIPTION	DATE
0	INITIAL SUBMITTAL TO TOWN	8/8/18



19 SOUTH TEJON ST., SUITE 300
 COLORADO SPRINGS, CO. 80903
 TELE: 719-471-7566
 FAX: 719-471-1174
 www.rtaarchitects.com



2 TOWN OF PARKER NORTH ELEVATION
SP-3 3/32" = 1'-0"



1 TOWN OF PARKER EAST ELEVATION
SP-3 3/32" = 1'-0"

EXTERIOR ELEVATION LEGEND

	S-1	STUCCO LARIAT PAREX		GL-1	INSULATED VISION GLASS SOLARBAN 80 OPTIBLUE PPG
	S-2	STUCCO SNOWBALL PAREX		GL-2	INSULATED SPANDELL GLASS AG 43 GRAY (INBOARD) GUARDIAN SUNGUARD
	S-3	STUCCO BASALT PAREX		GL-3	INSULATED METAL PANEL MAPE-S-R INFILL PANEL - CITYSCAPE MAPE-S
	STN-1	STONE CHERRY CREEK LEDGE SUNSET STONE		AL-1	ALUMINUM STOREFRONT CLEAR ANODIZED KAWNEER
	MTL-1	METAL PANEL HS-8 PANEL - CITYSCAPE BERRIDGE			
	MTL-2	METAL PANEL FW-12 PANEL - CITYSCAPE BERRIDGE			
	MTL-3	METAL FASCIA AND SOFFIT CITYSCAPE BERRIDGE			
	MTL-4	METAL COPING, TRIM AND CANOPY ZINC GREY BERRIDGE			

TOWN OF PARKER SIGNATURE

THE PLANS ARE REVIEWED FOR CONCEPT ONLY AND THE REVIEW DOES NOT IMPLY RESPONSIBILITY BY THE REVIEWING DEPARTMENT, THE DESIGNATED TOWN AUTHORITY OR OTHER APPOINTED PERSON, OR THE TOWN OF PARKER FOR ACCURACY AND CORRECTNESS OF CALCULATIONS, ENGINEERING, OR DESIGN. THE REVIEW DOES NOT IMPLY QUANTITIES REQUIRED. THE REVIEW WILL NOT BE CONSTRUED FOR ANY REASON AS ACCEPTANCE OF FINANCIAL RESPONSIBILITY BY THE TOWN OR REVIEWING DEPARTMENTS FOR ANY COSTS, LABOR, OR MATERIAL THAT MAY BE REQUIRED DURING CONSTRUCTION PHASE. REVIEW IS EXCLUSIVELY LIMITED TO TOWN OF PARKER PUBLIC IMPROVEMENTS.

TOWN OF PARKER, PUBLIC WORKS DIRECTOR	DATE
TOWN OF PARKER, DESIGNATED TOWN AUTHORITY	DATE
TOWN OF PARKER, DESIGNATED TOWN AUTHORITY	DATE

B:\3001\Parker MOB III\Parker MOB III CS_ARCH_L18.rvt 8/8/2018 10:54:00 AM

#	DESCRIPTION	DATE
0	INITIAL SUBMITTAL TO TOWN	8/8/18



19 SOUTH TEJON ST., SUITE 300
 COLORADO SPRINGS, CO. 80903
 TELE: 719-471-7566
 FAX: 719-471-1174
 www.rtaarchitects.com

PROJECT

Parker Adventist Hospital MOB III

9395 CROWN CREST BLVD. PARKER, COLORADO 80138

SITE PLAN AMENDMENT

SHEET TITLE

BUILDING ELEVATIONS

SHEET NUMBER



2 TOWN OF PARKER SOUTH ELEVATION
 SP-4 3/32" = 1'-0"

Need to incorporate a clear "top" of the building per CIMF III.2.A.2.

Need to show any building mounted utility equipment to be painted to match the building or note that there is none.

EXTERIOR ELEVATION LEGEND

	S-1	STUCCO LARIAT POREX		GL-1	INSULATED VISION GLASS SOLARBAN 80 OPTIBLU PPG
	S-2	STUCCO SNOWBALL POREX		GL-2	INSULATED SPANDELL GLASS AG 43 GRAY (INBOARD) GUARDIAN SUNGUARD
	S-3	STUCCO BASALT POREX		GL-3	INSULATED METAL PANEL MAPES-R INFILL PANEL - CITYSCAPE MAPES
	STN-1	STONE CHERRY CREEK LEDGE SUNSET STONE		AL-1	ALUMINUM STOREFRONT CLEAR ANODIZED KAWNEER
	MTL-1	METAL PANEL HS-8 PANEL - CITYSCAPE BERRIDGE			
	MTL-2	METAL PANEL FW-12 PANEL - CITYSCAPE BERRIDGE			
	MTL-3	METAL FASCIA AND SOFFIT CITYSCAPE BERRIDGE			
	MTL-4	METAL COPING, TRIM AND CANOPY ZINC GREY BERRIDGE			

TOWN OF PARKER SIGNATURE

THE PLANS ARE REVIEWED FOR CONCEPT ONLY AND THE REVIEW DOES NOT IMPLY RESPONSIBILITY BY THE REVIEWING DEPARTMENT, THE DESIGNATED TOWN AUTHORITY OR OTHER APPOINTED PERSON, OR THE TOWN OF PARKER FOR ACCURACY AND CORRECTNESS OF CALCULATIONS, ENGINEERING, OR DESIGN. THE REVIEW DOES NOT IMPLY QUANTITIES REQUIRED. THE REVIEW WILL NOT BE CONSTRUED FOR ANY REASON AS ACCEPTANCE OF FINANCIAL RESPONSIBILITY BY THE TOWN OR REVIEWING DEPARTMENTS FOR ANY COSTS, LABOR, OR MATERIAL THAT MAY BE REQUIRED DURING CONSTRUCTION PHASE. REVIEW IS EXCLUSIVELY LIMITED TO TOWN OF PARKER PUBLIC IMPROVEMENTS.

TOWN OF PARKER, PUBLIC WORKS DIRECTOR	DATE
TOWN OF PARKER, DESIGNATED TOWN AUTHORITY	DATE
TOWN OF PARKER, DESIGNATED TOWN AUTHORITY	DATE



1 TOWN OF PARKER WEST ELEVATION
 SP-4 3/32" = 1'-0"

#	DESCRIPTION	DATE
0	INITIAL SUBMITTAL TO TOWN	8/8/18



19 SOUTH TEJON ST., SUITE 300
 COLORADO SPRINGS, CO. 80903
 TELE: 719-471-7566
 FAX: 719-471-1174
 www.rtaarchitects.com

PROJECT

Parker Adventist Hospital MOB III

9395 CROWN CREST BLVD. PARKER, COLORADO 80138

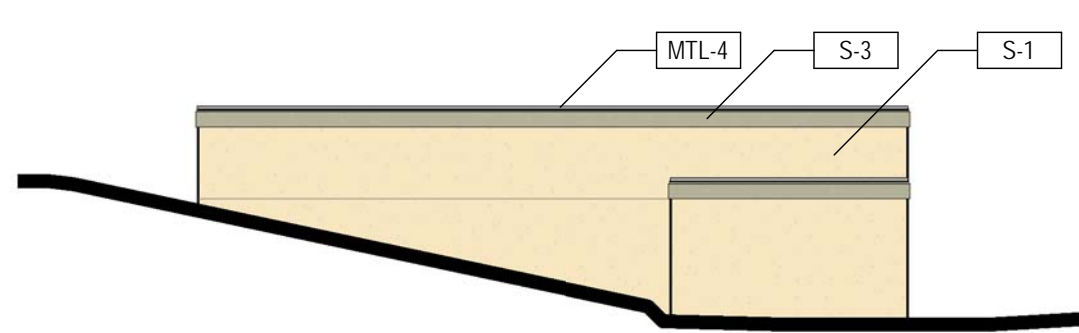
SITE PLAN AMENDMENT

SHEET TITLE

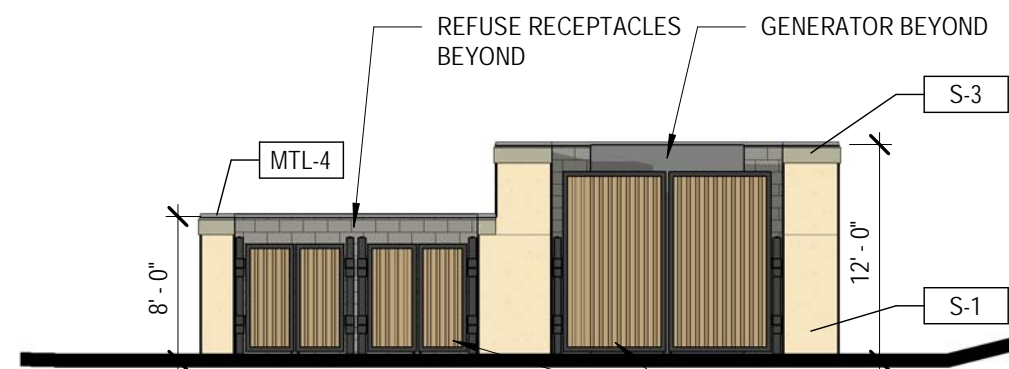
BRIDGE AND SITE ENCLOSURES ELEVATIONS

SHEET NUMBER

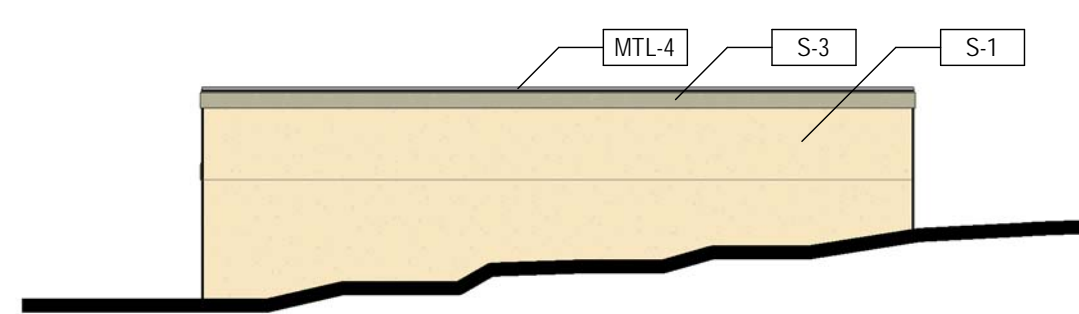
Need to call these out on the site plan.



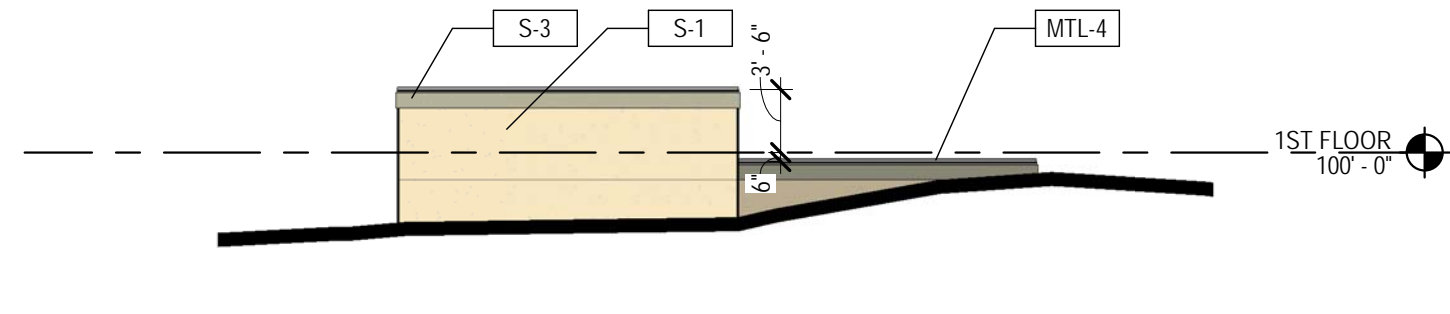
6 TOWN OF PARKER TRASH AND GENERATOR ENCLOSURES WEST ELEVATION
 SP-5 3/32" = 1'-0"



5 TOWN OF PARKER TRASH AND GENERATOR ENCLOSURES SOUTH ELEVATION
 SP-5 3/32" = 1'-0"



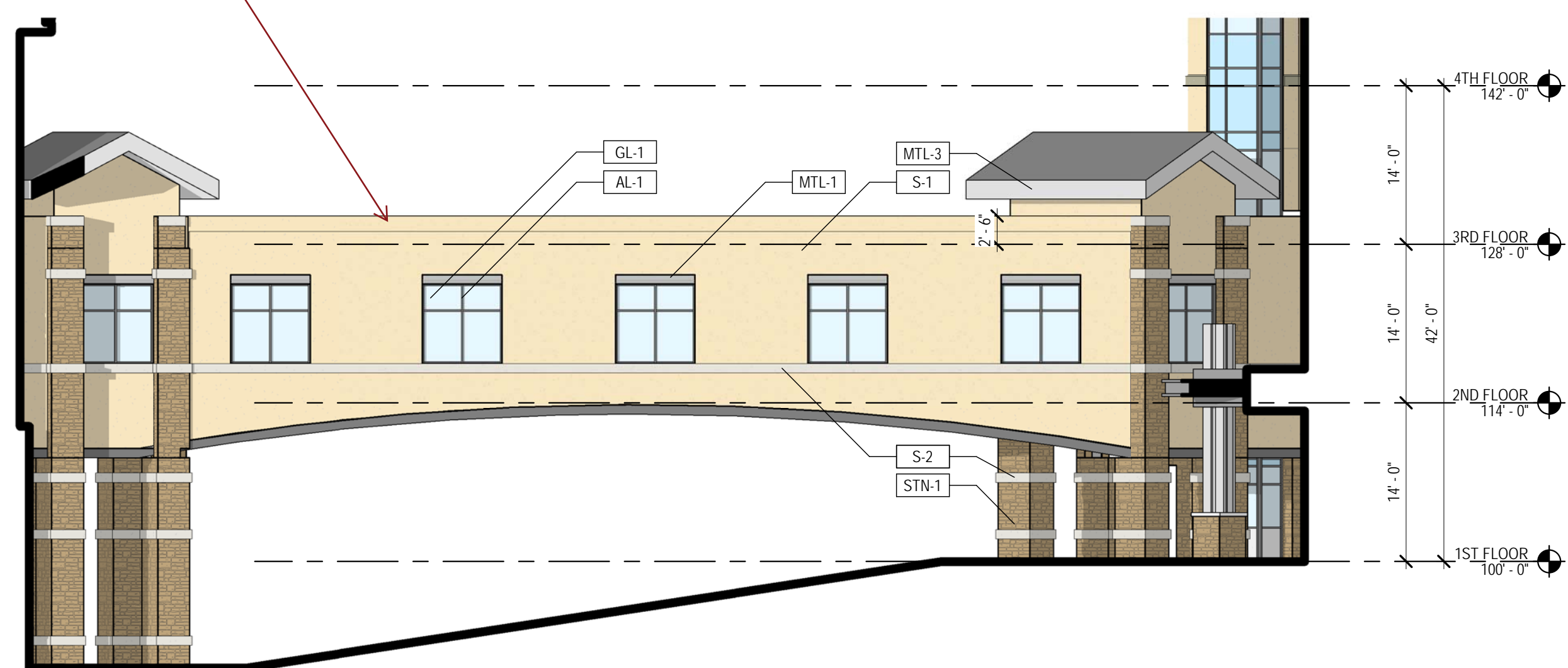
4 TOWN OF PARKER TRASH AND GENERATOR ENCLOSURES EAST ELEVATION
 SP-5 3/32" = 1'-0"



3 TOWN OF PARKER TRASH AND GENERATOR ENCLOSURES NORTH ELEVATION
 SP-5 3/32" = 1'-0"

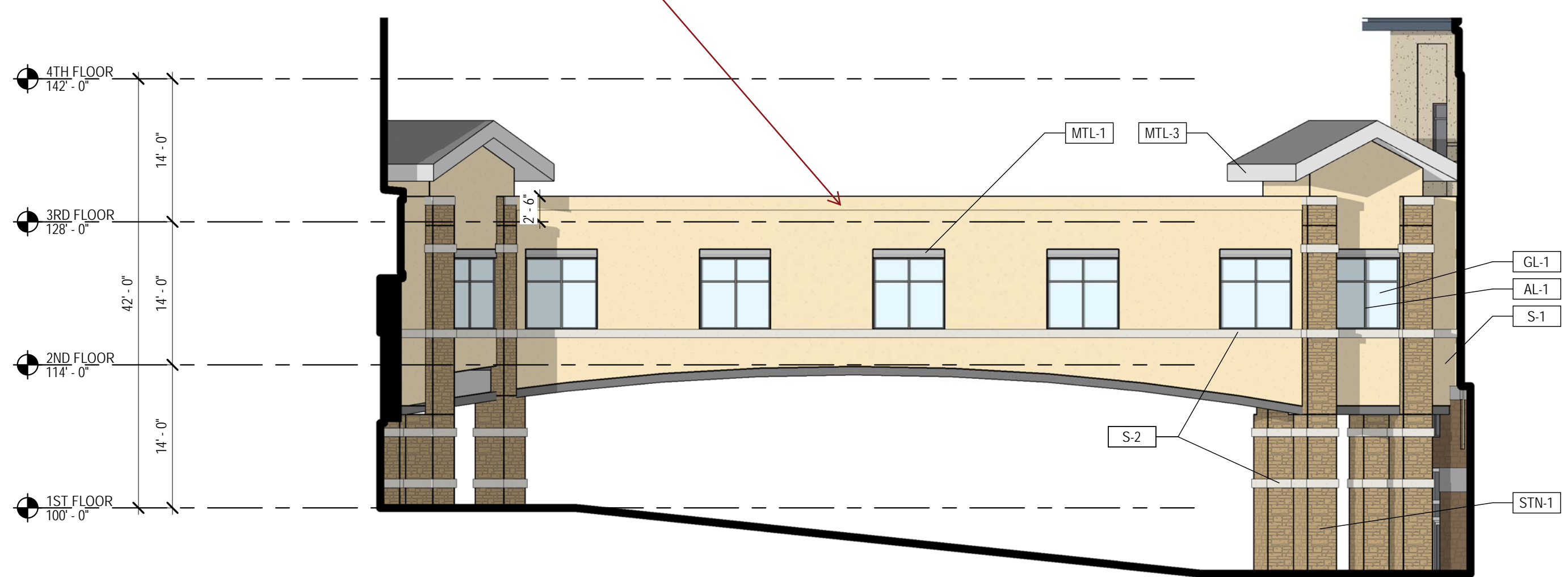
METAL DOORS PAINTED TO MATCH STN-1
 STN - 1 not found on the color and material board, please provide.

Paint this area S-3 to give this a cap?



2 TOWN OF PARKER BRIDGE SOUTH ELEVATION
 SP-5 3/32" = 1'-0"

Paint this area S-3 to give this a cap?



1 TOWN OF PARKER BRIDGE NORTH ELEVATION
 SP-5 3/32" = 1'-0"

EXTERIOR ELEVATION LEGEND

	S-1 STUCCO LARIAT PAREX		GL-1 INSULATED VISION GLASS SOLARBAN 80 OPTIBLUE PPG
	S-2 STUCCO SNOWBALL PAREX		GL-2 INSULATED SPANDREL GLASS AG 43 GRAY (INBOARD) GUARDIAN SUNGUARD
	S-3 STUCCO BASALT PAREX		GL-3 INSULATED METAL PANEL MAPE-S-R INFILL PANEL - CITYSCAPE MAPE-S
	STN-1 STONE CHERRY CREEK LEDGE SUNSET STONE		AL-1 ALUMINUM STOREFRONT CLEAR ANODIZED KAWNEER
	MTL-1 METAL PANEL HS-8 PANEL - CITYSCAPE BERRIDGE		
	MTL-2 METAL PANEL FW-12 PANEL - CITYSCAPE BERRIDGE		
	MTL-3 METAL FASCIA AND SOFFIT CITYSCAPE BERRIDGE		
	MTL-4 METAL COPING, TRIM AND CANOPY ZINC GREY BERRIDGE		

TOWN OF PARKER SIGNATURE

THE PLANS ARE REVIEWED FOR CONCEPT ONLY AND THE REVIEW DOES NOT IMPLY RESPONSIBILITY BY THE REVIEWING DEPARTMENT, THE DESIGNATED TOWN AUTHORITY OR OTHER APPOINTED PERSON, OR THE TOWN OF PARKER FOR ACCURACY AND CORRECTNESS OF CALCULATIONS, ENGINEERING, OR DESIGN. THE REVIEW DOES NOT IMPLY QUANTITIES REQUIRED. THE REVIEW WILL NOT BE CONSTRUED FOR ANY REASON AS ACCEPTANCE OF FINANCIAL RESPONSIBILITY BY THE TOWN OR REVIEWING DEPARTMENTS FOR ANY COSTS, LABOR, OR MATERIAL THAT MAY BE REQUIRED DURING CONSTRUCTION PHASE. REVIEW IS EXCLUSIVELY LIMITED TO TOWN OF PARKER PUBLIC IMPROVEMENTS.

TOWN OF PARKER, PUBLIC WORKS DIRECTOR	DATE
TOWN OF PARKER, DESIGNATED TOWN AUTHORITY	DATE
TOWN OF PARKER, DESIGNATED TOWN AUTHORITY	DATE



2
SP6 VIEW FROM NORTHWEST



1
SP6 VIEW FROM SOUTHEAST

BIM_3001/Parker MOB III/Parker MOB III_CS_ARCH_v18.rvt
 8/8/2018 10:54:45 AM

PARKER PROJECT NUMBER

SP18-

DATE

8/8/2018

REVISIONS

#	DESCRIPTION	DATE
0	INITIAL SUBMITTAL TO TOWN	8/8/18



19 SOUTH TEJON ST., SUITE 300
 COLORADO SPRINGS, CO. 80903
 TELE: 719-471-7566
 FAX: 719-471-1174
 www.rtaarchitects.com

PROJECT

**Parker Adventist
 Hospital MOB III**

9395 CROWN CREST BLVD.
 PARKER, COLORADO 80138

**SITE PLAN
 AMENDMENT**

SHEET TITLE

**BUILDING
 RENDERINGS**

SHEET NUMBER

9 of 11

TOWN OF PARKER SIGNATURE

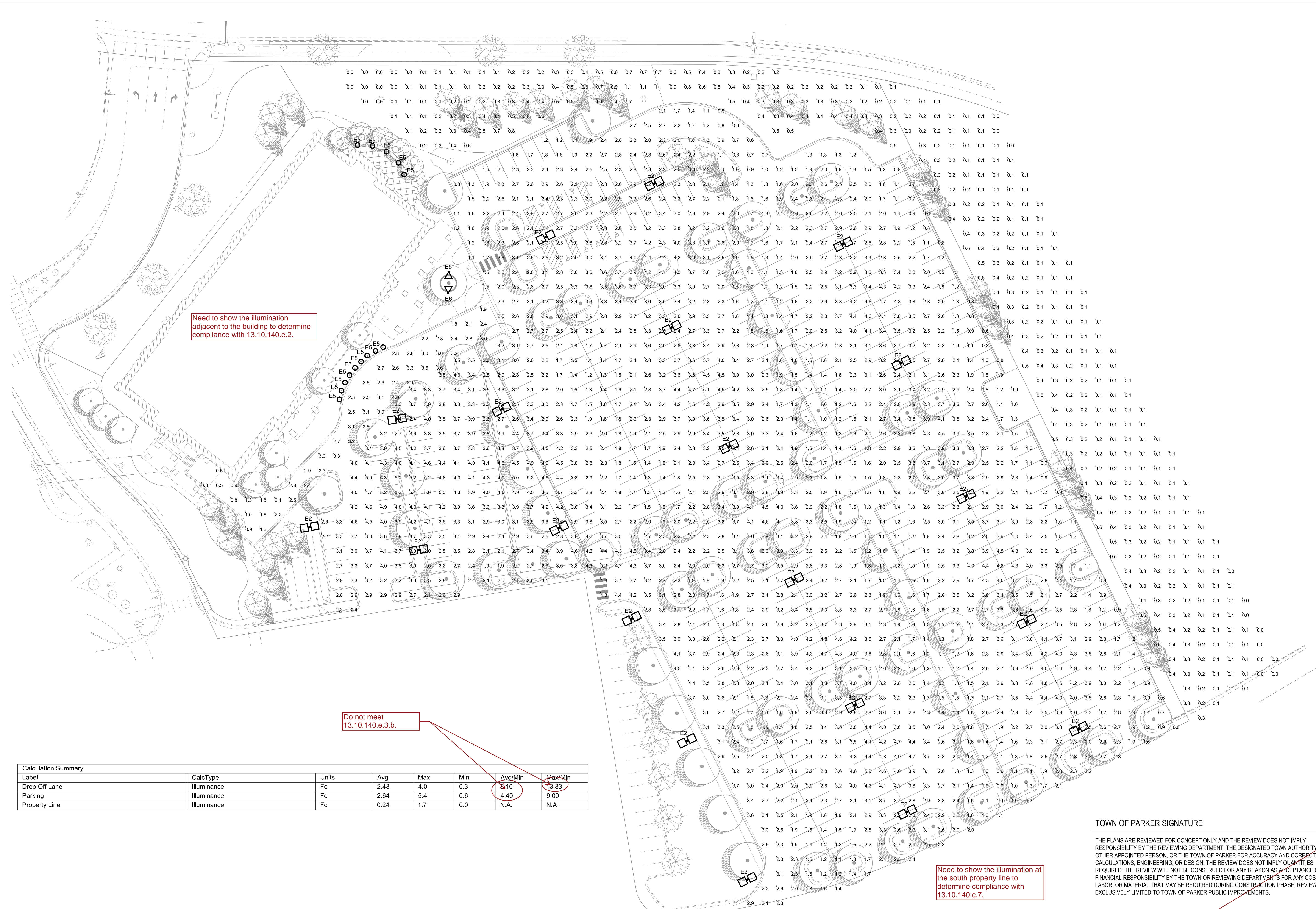
THE PLANS ARE REVIEWED FOR CONCEPT ONLY AND THE REVIEW DOES NOT IMPLY RESPONSIBILITY BY THE REVIEWING DEPARTMENT, THE DESIGNATED TOWN AUTHORITY OR OTHER APPOINTED PERSON, OR THE TOWN OF PARKER FOR ACCURACY AND CORRECTNESS OF CALCULATIONS, ENGINEERING, OR DESIGN. THE REVIEW DOES NOT IMPLY QUANTITIES REQUIRED. THE REVIEW WILL NOT BE CONSTRUED FOR ANY REASON AS ACCEPTANCE OF FINANCIAL RESPONSIBILITY BY THE TOWN OR REVIEWING DEPARTMENTS FOR ANY COSTS, LABOR, OR MATERIAL THAT MAY BE REQUIRED DURING CONSTRUCTION PHASE. REVIEW IS EXCLUSIVELY LIMITED TO TOWN OF PARKER PUBLIC IMPROVEMENTS.

TOWN OF PARKER, PUBLIC WORKS DIRECTOR DATE

TOWN OF PARKER, DESIGNATED TOWN AUTHORITY DATE

TOWN OF PARKER, DESIGNATED TOWN AUTHORITY DATE

REVISION	DESCRIPTION	DATE
0	INITIAL SUBMITTAL TO TOWN	8/8/18



Need to show the illumination adjacent to the building to determine compliance with 13.10.140.e.2.

Do not meet 13.10.140.e.3.b.

Need to show the illumination at the south property line to determine compliance with 13.10.140.c.7.

Label	CalcType	Units	Avg	Max	Min	Avg/Min	Max/Min
Drop Off Lane	Illuminance	Fc	2.43	4.0	0.3	8.10	13.33
Parking	Illuminance	Fc	2.64	5.4	0.6	4.40	9.00
Property Line	Illuminance	Fc	0.24	1.7	0.0	N.A.	N.A.

PROJECT
Parker Adventist
Hospital MOB III

9395 CROWN CREST BLVD,
PARKER, COLORADO 80138

SITE PLAN
AMENDMENT

TOWN OF PARKER SIGNATURE

THE PLANS ARE REVIEWED FOR CONCEPT ONLY AND THE REVIEW DOES NOT IMPLY RESPONSIBILITY BY THE REVIEWING DEPARTMENT, THE DESIGNATED TOWN AUTHORITY OR OTHER APPOINTED PERSON, OR THE TOWN OF PARKER FOR ACCURACY AND CORRECTNESS OF CALCULATIONS, ENGINEERING, OR DESIGN. THE REVIEW DOES NOT IMPLY QUANTITIES REQUIRED. THE REVIEW WILL NOT BE CONSTRUED FOR ANY REASON AS ACCEPTANCE OF FINANCIAL RESPONSIBILITY BY THE TOWN OR REVIEWING DEPARTMENTS FOR ANY COSTS, LABOR, OR MATERIAL THAT MAY BE REQUIRED DURING CONSTRUCTION PHASE. REVIEW IS EXCLUSIVELY LIMITED TO TOWN OF PARKER PUBLIC IMPROVEMENTS.

TOWN OF PARKER, PUBLIC WORKS DIRECTOR _____ DATE _____

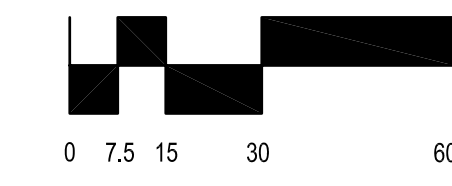
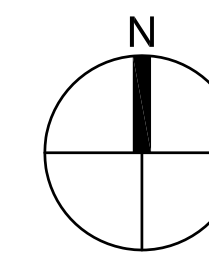
TOWN OF PARKER, DESIGNATED TOWN AUTHORITY _____ DATE _____

TOWN OF PARKER, DESIGNATED TOWN AUTHORITY _____ DATE _____

SHEET TITLE
SITE LIGHTING
PHOTOMETRIC PLAN

SHEET NUMBER

10 OF 11



KIM LIGHTING ET LED Entablature® Large PicoPrism™ LED kl_etled_spec.pdf

JOB TYPE APPROVALS

NOTES

FEATURES

- Full Cutoff PicoPrism technology
- Patented low profile luminaire
- Available in 500nm, 3000K, 4000K and 5000K standard CCT
- Type 1, 2, 3, 4, 5, R, L distributions
- 0-10V dimming drivers standard
- Sealed optical chamber, IP66 certified

Certifications

SPECIFICATIONS

Max. Weight = 45 lbs. EPA 1.8 for 1A. See Configuration for Additional EPA's.

ORDERING CODE

Configuration	EPA	Finish	Mounting	Optical Module	Fixture Finish	PhotoCell Options
1A	1.8	Black	1	2K 5000K	BL Black	A25 7-pin Photocell
2A	2.6	Black	2	2K 5000K	LG Light Gray	A30 120V Bottom Photocell
3A	3.4	Black	3	2K 5000K	PS Platinum Silver	A33 240V Bottom Photocell
4A	4.2	Black	4	2K 5000K	WH White	A34 480V Bottom Photocell
5A	5.0	Black	5	2K 5000K	CC Custom Color	A35 240V Bottom Photocell

© 2016 KIM LIGHTING | 16555 East Galia Ave. | City of Industry | CA 91745
P 626 968 5666 | F 626 369 2635 | www.kimlighting.com | Rev. 1st. 06, 2018

KIM LIGHTING GEM™1 LED Performance Bollard Aluminum Shaft

revision: 5/31/18 • kl_gem1led_spec.pdf

Type: Job: Catalog number: Approvals:

SPECIFICATIONS

GEM Models

GEM1 Maximum weight: 28 lb

Top Cap: Die-cast, low copper (< 0.6% Cu) aluminum secured to rib body by captive stainless steel allen cap screws. For lamp access, allen screws shall not require complete removal.

Supports: Die-cast, low copper (< 0.6% Cu) aluminum supports secured in place as a complete cage assembly. The top section provides a cutoff lamp compartment. The supports are secured to the shaft by four stainless steel tie rods.

Refractor: Thermally tempered soda lime glass sealed with silicone gaskets top and bottom.

Shaft: One-piece aluminum extrusion, .125" minimum wall thickness with a heavy cast aluminum anchor base concealed within the shaft. Hex socket stainless steel set screws shall lock the shaft onto the cast frangible anchor base.

LED Optical System: A total of 9 mid power LED emitters configured in a rectangular array comprised together as a module. Two (2) modules, 18 diodes for Type I version; three (3) modules, 27 diodes for Type III version; and four (4) modules, 36 diodes for Type V version. Available in 590nm Amber, 3000K, 4000K and 5000K color temperatures.

LED Driver: Universal voltage from 120 to 277V with a ±10% tolerance. -40°F. starting temperature. All drivers are Underwriters Laboratories recognized.

Anchor Bolts: Four 3/8" x 10" + 2" zinc plated J-bolts, each with two nuts, washers and a rigid pressed board template.

Finish: Each luminaire receives a fade and abrasion resistant, electrostatically applied, thermally cured, triglycidyl isocyanurate (TGIC) polyester powdercoat finish. Standard colors include (BL) Black, (DB) Dark Bronze, (WH) White, (PS) Platinum Silver, (SG) Stealth Gray, (LG) Light Gray, and (CC) Custom Color (include RAL's).

Listed to: UL 1598 Standard for Luminaires - UL 8750 Standard for Safety for Light Emitting Diode (LED) Equipment for use in Lighting Products and CSA C22.2 #250.0 Luminaires. RoHS compliant. Meets Buy American provisions within ARRA.

Warranty: Kim Lighting warrants Bollard LED products sold by Kim Lighting to be free from defects in material and workmanship for (i) a period of five (5) years for metal parts, (ii) a period of five (5) years for exterior housing paint finishes, (iii) a period of five (5) years for LED Light Engines and, (iv) a period of five (5) years for LED power components (driver, surge protector and LifeShield® device), from the date of sale of such goods to the buyer as specified in Kim Lighting shipment documents for each product.

CAUTION: Fixtures must be grounded in accordance with national, state and/or local electrical codes. Failure to do so may result in serious personal injury.

© 2016 KIM LIGHTING • 17780 ROWLAND STREET, CITY OF INDUSTRY, CA 91748 • TEL: 626/968-6666 • FAX: 626/968-2636

KIM LIGHTING Scarab™ EL700 120 to 277 Volt Die-Cast Aluminum LED

9/5/13 • kl_el700led_spec.pdf

Type: Job: Approvals:

Fixture Catalog number: Fixture Options: Date: Page: 1 of 4

SPECIFICATIONS

EL7007L 7 Light Emitting Diodes

EL7009L 9 Light Emitting Diodes

EL70012L 12 Light Emitting Diodes

Housing: Die-cast aluminum body and lens frame.

Drives: Die-cast aluminum with locking teeth and 1/2" solid brass NPT mount. Provides horizontal rotation independent of the threaded mount. Swivel locked by 1/4-20 stainless set screw. Clear anodized prior to powder coating for added corrosion resistance.

Gasketing: Silicone gaskets throughout.

Fasteners: Stainless steel.

Wiring: No. 18AWG rated 105°C.

Optical System: High performance acrylic optic securely attached to internal heat sink for maximum thermal dissipation.

Driver: Universal Voltage from 120 to 277V with a ±10% tolerance. -40°F. starting temperature. All drivers are Underwriters Laboratories recognized.

Finish: Each luminaire receives a fade and abrasion resistant, electrostatically applied, thermally cured, triglycidyl isocyanurate (TGIC) polyester powdercoat finish. Standard colors include (BL) Black, (DB) Dark Bronze, (GR) Verde Green.

Listed to: UL 1598 Standard for Luminaires - UL 8750 Standard for Safety for Light Emitting Diode (LED) Equipment for use in Lighting Products and CAN/CSA C22.2 No. 250.0 -08 Luminaires. LEDs and drivers are RoHS compliant.

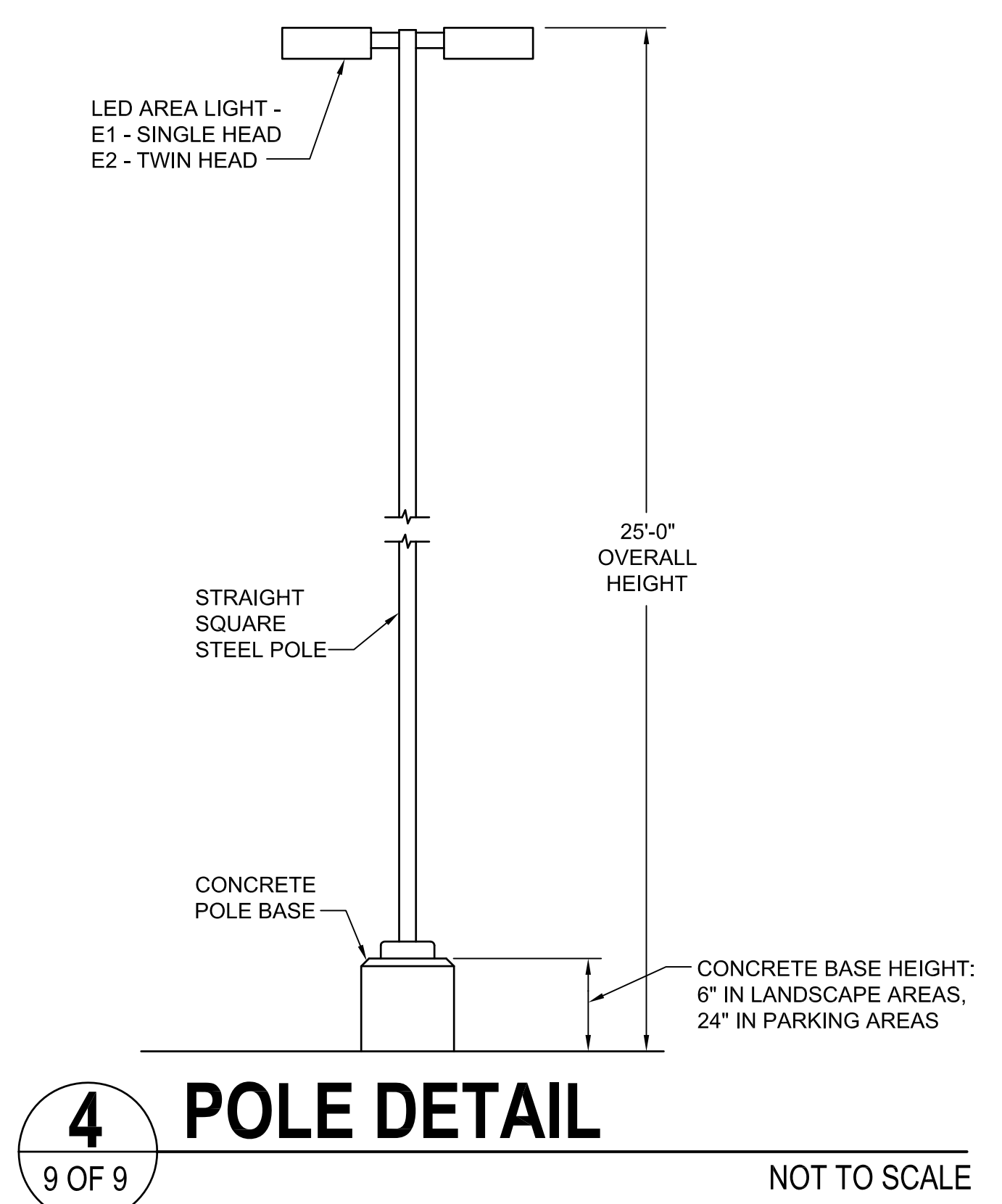
CAUTION: Fixtures must be grounded in accordance with national, state and/or local electrical codes. Failure to do so may result in serious personal injury.

© 2013 KIM LIGHTING INC. • P. O. BOX 60080, CITY OF INDUSTRY, CA 91716-0080 • TEL: 626/968-6666 • FAX: 626/968-2636

1 LUMINAIRE E1 AND E2
9 OF 9 NO SCALE

2 LUMINAIRE E5
9 OF 9 NO SCALE

3 LUMINAIRE E6
9 OF 9 NO SCALE



PARKER PROJECT NUMBER
SP18-
DRAWN BY
TAH
DATE
8/8/2018

REVISION	DESCRIPTION	DATE
0	INITIAL SUBMITTAL TO TOWN	8/8/18

PROJECT
Parker Adventist Hospital MOB III
9395 CROWN CREST BLVD,
PARKER, COLORADO 80138

SITE PLAN AMENDMENT

TOWN OF PARKER SIGNATURE

THE PLANS ARE REVIEWED FOR CONCEPT ONLY AND THE REVIEW DOES NOT IMPLY RESPONSIBILITY BY THE REVIEWING DEPARTMENT, THE DESIGNATED TOWN AUTHORITY OR OTHER APPOINTED PERSON, OR THE TOWN OF PARKER FOR ACCURACY AND CORRECTNESS OF CALCULATIONS, ENGINEERING, OR DESIGN. THE REVIEW DOES NOT IMPLY QUANTITIES REQUIRED. THE REVIEW WILL NOT BE CONSTRUED FOR ANY REASON AS ACCEPTANCE OF FINANCIAL RESPONSIBILITY BY THE TOWN OR REVIEWING DEPARTMENTS FOR ANY COSTS, LABOR, OR MATERIAL THAT MAY BE REQUIRED DURING CONSTRUCTION PHASE. REVIEW IS EXCLUSIVELY LIMITED TO TOWN OF PARKER PUBLIC IMPROVEMENTS.

TOWN OF PARKER, PUBLIC WORKS DIRECTOR	DATE
TOWN OF PARKER, DESIGNATED TOWN AUTHORITY	DATE
TOWN OF PARKER, DESIGNATED TOWN AUTHORITY	DATE

SHEET TITLE
SITE LIGHTING CUTSHEETS & DETAIL
SHEET NUMBER
11 OF 11