

# PARKER ADVENTIST HOSPITAL : SALT SHED - SITE PLAN AMMENDMENT

## PARKER, COLORADO

PROJECT NUMBER  
194160.00

DRAWN BY  
Author

DATE  
12-09-2019

REVISIONS

| REV | DESCRIPTION | DATE |
|-----|-------------|------|
|-----|-------------|------|

### ABBREVIATIONS

|             |                              |              |                                      |          |                           |
|-------------|------------------------------|--------------|--------------------------------------|----------|---------------------------|
| A/C         | air conditioning             | FND          | foundation                           | PCF      | pounds per cubic foot     |
| AB          | bolt                         | FOC          | face of concrete                     | PCT CONC | precast concrete          |
| ABV         | above                        | FOM          | face of finish                       | PERF     | perforate (d)             |
| AC          | acoustical                   | FOS          | face of stud                         | PFN      | peninsular                |
| AC BD       | acoustic board               | FPT          | face of top                          | PFN      | prefinished               |
| AC TL       | acoustic tile                | FPL          | floor plate                          | PK       | panic hardware            |
| AC          | asphaltic concrete           | FR           | fire resistant                       | PL       | plate                     |
| ACC         | access                       | FR (d) (ing) | frame (d) (ing)                      | PLAS     | plaster                   |
| ACC PNL     | access panel                 | FRC          | fire-resistant coating               | PLF      | pounds per linear foot    |
| ADH         | adhesive                     | FRF          | fire-resistant                       | PLY      | plywood                   |
| ADI         | adjacent                     | FS           | fire-resistant                       | PNE      | panel (ed) (ing)          |
| ADJ         | adjustable                   | FTG          | floor sink                           | PNT      | paint                     |
| AFF         | above finished floor         | FUR          | furred (ing)                         | PRE-FAB  | prefabricate (d)          |
| AGG         | aggregate                    | FUT          | future                               | PRE      | preformed                 |
| AL or ALUM  | aluminum                     | GA           | gage, gauge                          | PSC      | prestressed concrete      |
| ALT         | alternate                    | GALV         | galvanized                           | PSS      | pounds per square foot    |
| ALPA        | area line pressure alarm     | GAB          | grab bar                             | PT       | point                     |
| ANC         | anchor, anchorage            | GC           | general contract (or)                | PTC      | post-tensioned concrete   |
| ANOD        | anodized                     | GRD          | grade                                | PTD      | paper towel dispenser     |
| APPROX      | approximately                | GFR          | glass fiber reinforced               | PTR      | paper towel receptor      |
| ARCH        | architect (ural)             | GI           | galvanized iron                      | PVC      | poly vinyl chloride       |
| ASPH        | asphalt                      | GKT          | gasket                               | PVMT     | pavement                  |
| AUTO        | automatic                    | GL           | glass, glazing                       | QT       | quarry tile               |
| BD          | board                        | GLB          | glass block                          | R        | radius                    |
| BEL         | below                        | GLS          | glass                                | R        | riser (s)                 |
| BET         | between                      | GRN          | granite                              | RA       | return air                |
| BIT         | bituminous                   | GRV          | grout                                | RB       | rubber base               |
| BLDG        | building                     | GWB          | gypsum wallboard                     | RBT      | rabbit                    |
| BLK         | block                        | GYP BD       | gypsum board                         | RD       | roof drain                |
| BLKG        | blocking                     | GYP PLAS     | gypsum plaster                       | REF      | reference                 |
| BM          | beam                         | GYP LA       | gypsum lath                          | REG      | register                  |
| BD          | bottom of                    | GYP TL       | gypsum tile                          | REIN     | reinforce (d) (ing)       |
| BOT         | bottom                       | HB           | hose bibb                            | RES      | resilient                 |
| BOT PL      | bottom plate                 | HCB          | hollow core                          | RET      | return                    |
| BRG         | bearing                      | HCD          | heavy duty                           | REV      | revision                  |
| BRK         | brick                        | HDR          | hardware                             | RFG      | roofing                   |
| BRZ         | bronze                       | HDM          | hardware                             | RFL      | reflect (ed) (ive) (or)   |
| BSMT        | basement                     | HGT          | height                               | RM       | room                      |
| BT          | but                          | HMT          | hollow metal                         | RO       | rough opening             |
| BU BD       | bulletin board               | HORIZ        | horizontal                           | ROW      | right of way              |
| BUR         | built-up roof                | HR           | hour                                 | RVS      | reverse                   |
| BVL         | bevel                        | HTG          | heating                              | RVT      | revet                     |
| CAB         | cabinet                      | HVAC         | heating/ventilating/air conditioning | S        | slab                      |
| CB          | code blue                    | HWD          | hardwood                             | SC       | solid core                |
| CCTV        | closed circuit television    | ID           | inside diameter                      | SCN      | schedule                  |
| CEM PLAS    | cement plaster (portland)    | INCL         | include (d) (ing)                    | SCN      | screen                    |
| CEM         | cement                       | INS CONC     | insulating concrete                  | SEC      | section                   |
| CEK         | ceramic                      | INSUL        | insulate (d) (ion)                   | SE       | service sink              |
| CG          | corner guard                 | INT          | interior                             | SK       | square feet (foot)        |
| CIR         | cast iron                    | INT          | invert                               | SF       | semi-gloss                |
| CIR         | circle                       | IPS          | iron pipe size                       | SH       | sheet                     |
| CIRC        | circumference                | J            | joist                                | SHTG     | sheathing                 |
| CI          | control joint                | JAN CLO      | janitor closet                       | SL       | sleeve                    |
| CK          | caulk (ing), caulk (ing)     | JF           | joint filler                         | SMS      | sheet metal screw         |
| CL          | center line                  | JT           | joint                                | SP       | sealant                   |
| CLG HGT     | ceiling height               | K            | kitchen                              | SPC      | specification (s)         |
| CLK BD      | chick board                  | L            | length                               | SPK      | speaker                   |
| CLR         | clear                        | LAB          | laboratory                           | SQL      | special                   |
| CLS         | closure                      | LAD          | ladder                               | SS       | stainless steel           |
| CO          | concrete masonry unit (s)    | LAM          | laminate                             | STA      | station                   |
| COL         | column                       | LAV          | lavatory                             | STD      | standard                  |
| COMB        | combination                  | LBL          | label                                | STC      | seating                   |
| COMP        | compress (ed) (ion) (ible)   | LH           | left hand                            | STL      | steel                     |
| COMPO       | composition, composite       | LHP          | live load                            | STOR     | storage                   |
| COMPT       | compartment                  | LJP          | low point                            | STR      | structure (al)            |
| CONC        | concrete                     | LJ           | light                                | SUS      | suspended                 |
| CONSTR      | construction                 | LPT          | low point                            | SUP      | spray vinyl               |
| CONT        | continue, continuous         | LPT          | low point                            | SYS      | symmetry (ical)           |
| CONTR       | contract (or)                | LTL          | light                                | SYN      | synthetic                 |
| COOR        | corrugated                   | LVR          | lower                                | SYS      | system                    |
| CPR         | copper                       | LWC          | lightweight concrete                 | T & G    | tongue & groove           |
| CPT         | carpet (ed) (ing)            | M            | meter (s)                            | T        | tread (s)                 |
| CS          | countersink (sunk)           | MAP          | map                                  | TB       | terra cotta               |
| CTR         | counter                      | MAS          | masonry                              | TE       | tinted                    |
| CTR FLG     | counter flashing             | MATL         | material                             | TELE     | telephone                 |
| CU FT       | cubic foot (feet)            | MAX          | maximum                              | TEMP     | tempered                  |
| CU YD       | cubic yard (s)               | MCH          | machine bolt                         | TH       | thick (ness)              |
| CV          | cover                        | MBR          | member                               | THK      | thick (ness)              |
| D           | depth                        | MD           | medium                               | TK BD    | tile back board           |
| DBL         | double                       | MED CAB      | medicine cabinet                     | TL       | tile                      |
| DEMO        | demolish, demolition         | MFD          | metal floor decking                  | TL PL    | top of plate              |
| DF          | drinking fountain            | MFR          | manufacturer (i)                     | TOP      | top of                    |
| DIAG        | diagonal                     | MHO          | manhole                              | TOL      | tolerance                 |
| DIAM        | diameter                     | MHO          | manhole                              | TOS      | top of steel              |
| DIM         | dimension (s)                | MIN          | minimum                              | TOW      | top of wall               |
| DW          | division                     | MISC         | miscellaneous                        | TP       | transparent               |
| DL          | dead load                    | MLD          | molding, moulding                    | TPN      | transparent               |
| DN          | down                         | MM           | millimeter (s)                       | TR       | transom                   |
| DPF         | downproofing                 | MMB          | membrane                             | TRM      | thermal                   |
| DPR         | dampener                     | MO           | masonry opening                      | TS       | tube steel                |
| DR          | door                         | MOD          | modular                              | TTD      | top of slab               |
| DS          | downspout                    | MOV          | movable                              | TV       | treated                   |
| DSPR        | dispenser                    | MRE          | marble                               | TV       | television                |
| DTL         | detail                       | MRD          | metal roof deck                      | TY       | typical                   |
| DWG         | drawing                      | MT           | mount (ing)                          | TZ       | terrazzo                  |
| DWR         | drawer                       | MTD          | mounted                              | UC       | undercut                  |
| E           | east                         | MTL FUR      | metal furring                        | UNF      | unfinished                |
| EL or ELEV  | elevation                    | MUL          | metal threshold                      | UNF      | unless noted otherwise    |
| ELEC PNL BD | electric panel board         | MULL         | mullion                              | UR       | urinal                    |
| ELECT       | electric (al)                | MWK          | millwork                             | V        | vacuum                    |
| ELEV        | elevator                     | N            | nitrogen                             | VAR      | varies, variable          |
| EMERG       | emergency                    | NAT          | natural                              | VBR      | vapor barrier             |
| ENC         | enclose (ure)                | NC           | nurse call                           | VCT      | vinyl base                |
| EPY         | epoxy                        | NIC          | not in contract                      | VERT     | vertical composition tile |
| EQ          | equal                        | NMT          | nonmetallic                          | VIF      | verify in field           |
| EST         | estimate                     | NOM          | nominal                              | VIN TL   | vinyl tile                |
| ET          | elapsed timer                | NR           | noise reduction                      | VIN      | vinyl                     |
| EW          | each way                     | NRC          | noise reduction coefficient          | VJ       | vertical joint            |
| EWC         | electric water cooler        | NTS          | not to scale                         | VNR      | vernest                   |
| EX          | exposed                      | O            | oxygen                               | VRM      | vermiculite               |
| EXH         | exhaust                      | OB           | obscure                              | VWC      | vinyl wall covering       |
| EXST or E   | existing                     | OBS          | obscure                              | W        | west                      |
| EXP JT or E | expansion joint              | OC           | on center                            | W        | width, wide               |
| EXT         | exterior                     | OD           | outside diameter                     | WO       | without                   |
| FA          | fire alarm                   | OH           | opposite hand                        | WB       | wood base                 |
| FAAP        | fire alarm annunciator panel | OH           | overhead                             | WC       | water closet              |
| FAC         | face (s)                     | OJ           | open-web joist                       | WO       | wood                      |
| FB          | face brick                   | OP           | opening                              | WDW      | window                    |
| FBD         | furnished by other           | OPG          | opening                              | WH       | wall hung                 |
| FBD         | fiberboard                   | OPP          | opposite                             | WPT      | waterproof (ing)          |
| FD          | floor drain                  | OR           | operating room                       | WPT      | working point             |
| FE          | fire extinguisher            | OS           | opposite surface                     | WR       | water resistant           |
| FE          | fire extinguisher cabinet    | OS           | opposite surface                     | WR       | wire (d)                  |
| FF          | factory finish               | OS           | opposite surface                     | WSC      | wainscot                  |
| FFE         | finished floor elevation     | PAR          | parallel                             | WWM      | woven wire mesh           |
| FFL         | finished floor line          | PB           | panic bar                            | ZVB      | zone valve box            |
| FGL         | fiberglass                   | PBD          | particle board                       |          |                           |
| FHC         | fire hose cabinet            |              |                                      |          |                           |
| FHMS        | flat head machine screw      |              |                                      |          |                           |
| FHS         | fire hose station            |              |                                      |          |                           |
| FHWS        | flat head wood screw         |              |                                      |          |                           |
| FIN         | finish                       |              |                                      |          |                           |
| FIS         | fastening                    |              |                                      |          |                           |
| FIS CO      | fastening (ing)              |              |                                      |          |                           |
| FIR         | floor (ing)                  |              |                                      |          |                           |
| FL          | floor                        |              |                                      |          |                           |
| FLUOR       | fluorescent                  |              |                                      |          |                           |
| FLX         | flexible                     |              |                                      |          |                           |
| FN          | fence                        |              |                                      |          |                           |

### SYMBOL LEGEND

**VIEW REFERENCES**

**DRAWING TITLES**

1 VIEW NAME

A2, 1A6, 1 1/8" = 1'-0"

SCALE

SHEET WHERE DRAWN

SHEET WHERE REFERENCED

**WALL/DETAIL SECTIONS**

SECTION NUMBER

VIEW DIRECTION

SHEET WHERE DRAWN

**BUILDING SECTION**

SECTION NUMBER

VIEW DIRECTION

SHEET WHERE DRAWN

**PLAN/DETAIL CALLOUTS**

CALLOUT NUMBER

SHEET WHERE DRAWN

**EXTERIOR / INTERIOR ELEVATIONS**

ELEVATION NUMBER

SHEET WHERE DRAWN

**DATUM SYMBOLS**

STRUCTURAL GRIDLINE

NAME OF LEVEL

HEIGHT ABOVE

PROJECT DATUM

SPOT ELEVATION INDICATOR

TRUE NORTH

**PROJECT SYMBOLS**

ROOM NAME

ROOM NUMBER

DOOR OR OPENING NUMBER. SEE SCHEDULE.

INDICATOR. SEE WINDOW TYPES.

CEILING TYPE. - SEE CEILING SCHEDULE

PAINT TYPE, WHERE PROJECT

INDICATOR. SEE ACCESSORY SCHEDULE

EQUIPMENT SCHEDULE EQPT1-

ACCESSORY SCHEDULE INDICATOR. SEE SIGNAGE SCHEDULE

**NOTE:** SEE INDIVIDUAL SHEETS FOR ADDITIONAL SYMBOLS.

### PROJECT DIRECTORY

**OWNER**  
PARKER ADVENTIST HOSPITAL  
188 INVERNESS DRIVE WEST, SUITE 500  
PARKER CO 80138  
PHONE: 303.267.9158  
FAX: 303.804.8195

**ARCHITECT**  
BOULDER ASSOCIATES, INC.  
1426 PEARL STREET, SUITE 300  
BOULDER, CO 80302  
PHONE: 303.499.7795  
FAX: 303.499.7767

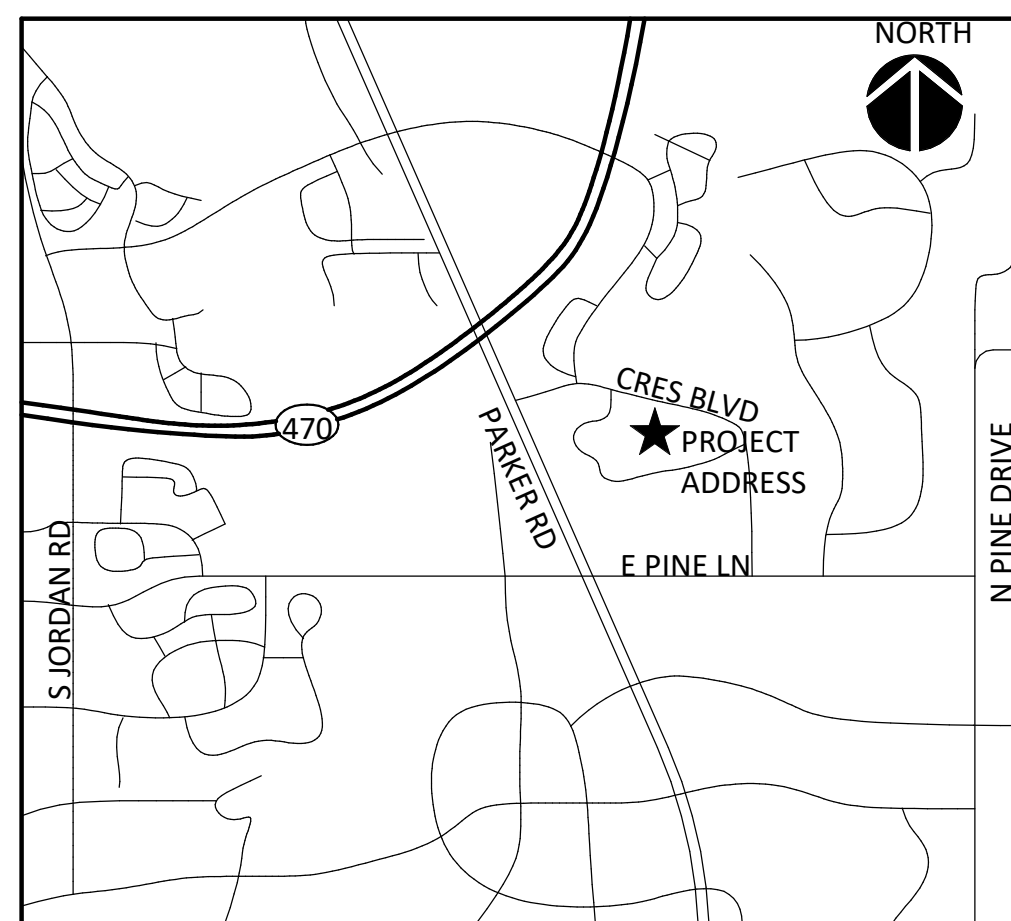
**CIVIL ENGINEER**  
S.A. MIRO, INC.  
4582 S ULSTER ST PKWY, STE 750  
DENVER, CO 80237-2639  
PHONE: 303.741.3737  
FAX: 720.407.1070

**CONTRACTOR**  
GE JOHNSON CONSTRUCTION CO.  
25 NORTH CASCADE AVENUE, SUITE 400  
COLORADO SPRINGS, CO 80903  
PHONE: 719.473.5321  
FAX: 719.473.5324

### SHEET INDEX

|                   |                                     |
|-------------------|-------------------------------------|
| 2 - ARCHITECTURAL |                                     |
| 1 of 5            | COVER SHEET                         |
| 2 of 5            | SITE PLAN                           |
| 3 of 5            | ARCHITECTURAL / LANDSCAPE SITE PLAN |
| 4 of 5            | PLAN AND ELEVATIONS                 |
| 5 of 5            | EXISTING CONDITIONS                 |

### VICINITY MAP



### PROJECT NARRATIVE

PARKER ADVENTIST HOSPITAL IS PROPOSING AN APPROXIMATELY 400 SQUARE FOOT STORAGE SHED FOR THE STORAGE OF SALT FOR SITE MAINTENANCE. THE BUILDING WILL BE CONSTRUCTED OF CONCRETE MASONRY UNIT WALLS WITH STUCCO AND METAL PANEL VENEER THAT WILL MATCH EXISTING HOSPITAL EXTERIOR FINISHES. THE ROOF WILL BE A STANDING SEAM METAL ROOF TO MATCH EXISTING HOSPITAL SLOPED ROOFS.

Comment #1: Add: SP19-129 here

Comment #2: Title should read:

Site Plan Amendment  
Parker Adventist Hospital Salt Shed Building  
Lot, Block and Subdivision Name  
Town of Parker, County of Douglas, State of Colorado  
Acreage

Comment #3: Add a table with site data as follows:

- Gross lot and net acreage of the proposed use, number of dwellings units and gross floor area, parking requirements

- Zoning

Comment #4: Remove this from the site plan

Comment #5: Add a minimum scale of 1" = 50' or similar; Add North arrow with written and graphic scale

Comment #6: Can this be condensed?

**BOULDER ASSOCIATES ARCHITECTS**

Boulder Associates, Inc.  
Architecture + Interior Design  
1426 Pearl Street, Suite 300  
Boulder, Colorado 80302  
303.499.7795 F 303.499.7767  
www.boulderassociates.com

PROJECT  
**PARKER ADVENTIST HOSPITAL: SALT SHED**

9395 CROWN CREST BLVD.  
PARKER, COLORADO 80138

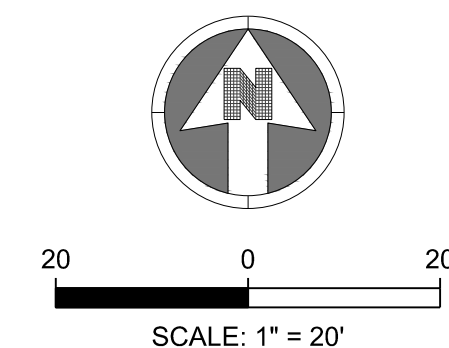
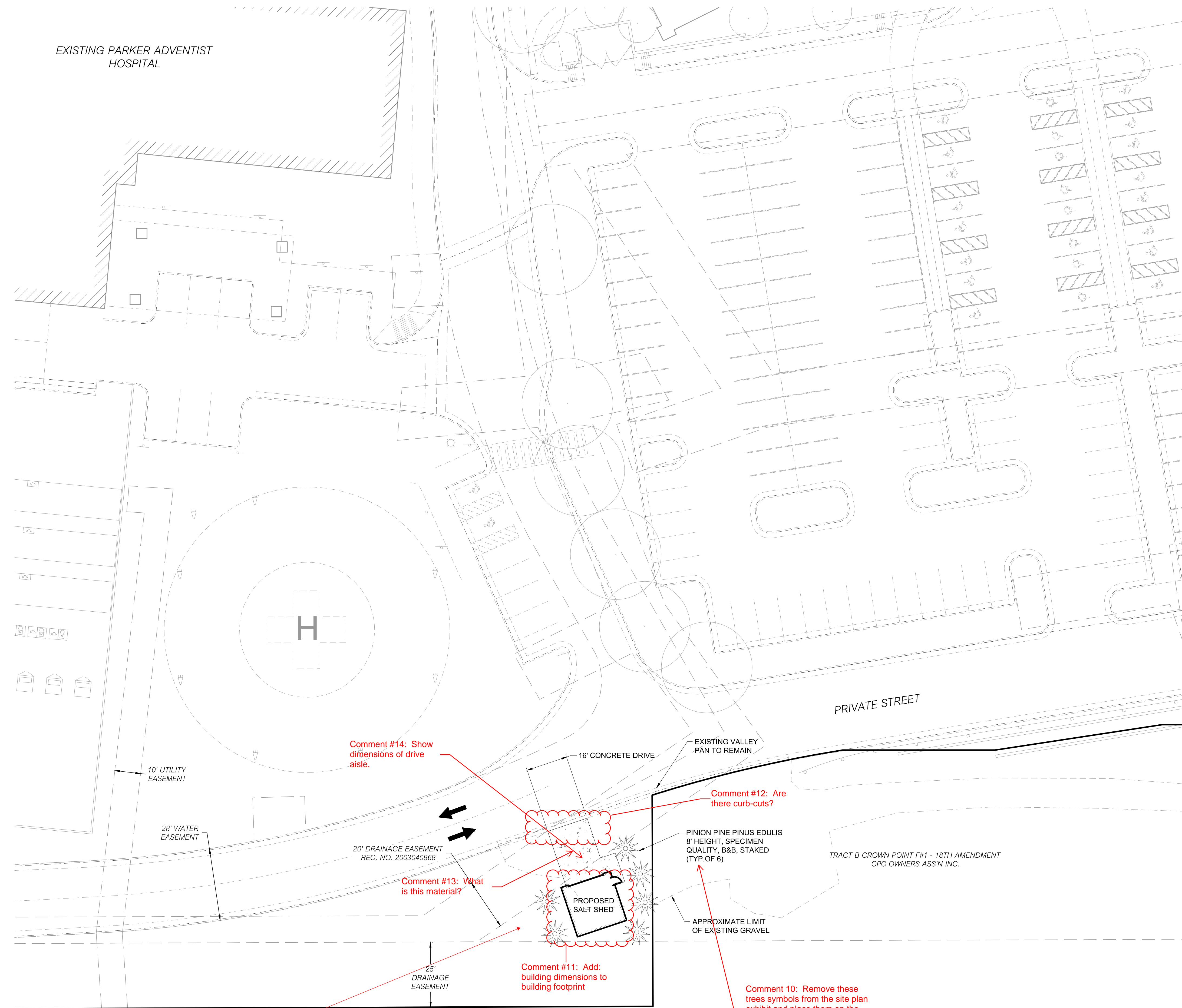
**SITE AMENDMENT**

SHEET TITLE  
**COVER SHEET**

SHEET NUMBER

**1 of 5**

EXISTING PARKER ADVENTIST HOSPITAL



LEGEND:

← TRAFFIC FLOW AREA

Comment #7: Add: existing and new easements symbols to the Legend

PROJECT NUMBER  
19130  
DRAWN BY  
MHV  
DATE  
11/07/19

| REVISIONS | DESCRIPTION | DATE |
|-----------|-------------|------|
|-----------|-------------|------|

**BOULDER ASSOCIATES**

**ARCHITECTS**

Boulder Associates, Inc.  
Architecture + Interior Design  
1426 Pearl Street, Suite 300  
Boulder, Colorado 80302  
303.499.7795 F 303.499.7767  
www.boulderassociates.com

PROJECT  
**PARKER ADVENTIST HOSPITAL: SALT SHED**

9395 CROWN CREST BLVD.  
PARKER, COLORADO 80138

**PLANNING SHEET**

SHEET TITLE  
**SITE PLAN**

SHEET NUMBER

**2 of 5**

Comment #14: Show dimensions of drive aisle.

Comment #12: Are there curb-cuts?

Comment #13: What is this material?

Comment #11: Add: building dimensions to building footprint

Comment #10: Remove these trees symbols from the site plan exhibit and place them on the landscape plan on next page.

Comment #8: Is this the Site Plan Exhibit? If so, please label accordingly.

Comment #9: Delete this from the site plan.

Comment 15: Add the following information to the site plan exhibit: The building envelope, size, setback dimensions and height of all proposed structures and all existing structures which are to be retained on the site. Also show any existing fence/walls.

Location, dimensions and names of adjacent streets, and proposed internal streets showing center line radii and curb return radii. Where applicable, proper sight triangles and sight distance criteria will be shown on the site plan as provided in the Town of Parker Roadway Design and Construction Criteria.

Draw the property line on the site plan, and draw a scale of approx 1" = 20' of the site plan amendment area. Need to include curb cuts, access drive, dimensions of all.

Show existing and proposed topography at 2 ft intervals (per Crownpoint PD Guide)

TOWN OF PARKER SIGNATURE

THE PLANS ARE REVIEWED FOR CONCEPT ONLY AND THE REVIEW DOES NOT IMPLY RESPONSIBILITY BY THE REVIEWING DEPARTMENT, THE DESIGNATED TOWN AUTHORITY OR OTHER APPOINTED PERSON, OR THE TOWN OF PARKER FOR ACCURACY AND CORRECTNESS OF CALCULATIONS, ENGINEERING, OR DESIGN. THE REVIEW DOES NOT IMPLY QUANTITIES REQUIRED. THE REVIEW WILL NOT BE CONSTRUED FOR ANY REASON AS ACCEPTANCE OF FINANCIAL RESPONSIBILITY BY THE TOWN OR REVIEWING DEPARTMENTS FOR ANY COSTS, LABOR, OR MATERIAL THAT MAY BE REQUIRED DURING CONSTRUCTION PHASE. REVIEW IS EXCLUSIVELY LIMITED TO TOWN OF PARKER PUBLIC IMPROVEMENTS.

TOWN OF PARKER, PUBLIC WORKS DIRECTOR \_\_\_\_\_ DATE \_\_\_\_\_

TOWN OF PARKER, DESIGNATED TOWN AUTHORITY \_\_\_\_\_ DATE \_\_\_\_\_

TOWN OF PARKER, DESIGNATED TOWN AUTHORITY \_\_\_\_\_ DATE \_\_\_\_\_

UNPLATTED  
BOWLEY FAMILY PARTNERSHIP LLLP

**BOULDER ASSOCIATES**

**ARCHITECTS**

Boulder Associates, Inc.  
Architecture + Interior Design  
1426 Pearl Street, Suite 300  
Boulder, Colorado 80302  
303.499.7795 F 303.499.7767  
www.boulderassociates.com

PROJECT  
**PARKER ADVENTIST HOSPITAL: SALT SHED**

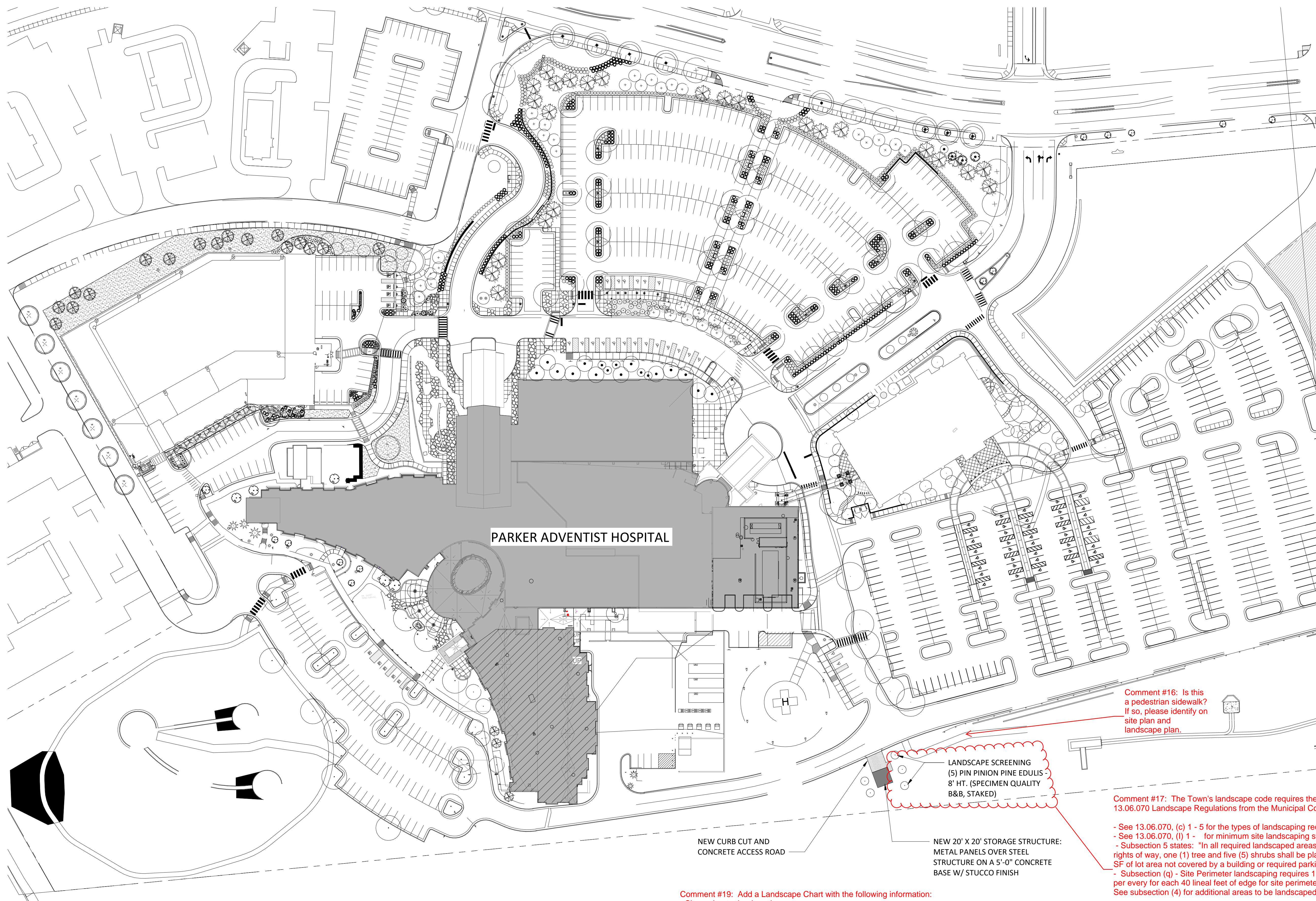
9395 CROWN CREST BLVD.  
PARKER, COLORADO 80138

SITE  
AMENDMENT

SHEET TITLE  
**ARCHITECTURAL /  
LANDSCAPE SITE  
PLAN**

SHEET NUMBER

**3 of 5**



PARKER ADVENTIST HOSPITAL

NEW CURB CUT AND CONCRETE ACCESS ROAD

NEW 20' X 20' STORAGE STRUCTURE: METAL PANELS OVER STEEL STRUCTURE ON A 5'-0" CONCRETE BASE W/ STUCCO FINISH

LANDSCAPE SCREENING  
(5) PIN PINION PINE EDULIS  
8' HT. (SPECIMEN QUALITY  
B&B, STAKED)

Comment #16: Is this a pedestrian sidewalk? If so, please identify on site plan and landscape plan.

Comment #17: The Town's landscape code requires the following (see 13.06.070 Landscape Regulations from the Municipal Code):

- See 13.06.070, (c) 1 - 5 for the types of landscaping required.
- See 13.06.070, (l) 1 - for minimum site landscaping standards.
- Subsection 5 states: "In all required landscaped areas except within public rights of way, one (1) tree and five (5) shrubs shall be planted for each 1,500 SF of lot area not covered by a building or required parking."
- Subsection (q) - Site Perimeter landscaping requires 1 tree with 5 shrubs per every for each 40 lineal feet of edge for site perimeter. See subsection (4) for additional areas to be landscaped.

Comment #19: Add a Landscape Chart with the following information:

- Site perimeter landscaping
- Streetscape landscaping
- Lot coverage data with gross lot area in acres, building floor area, total landscaped area
- Percent of total site, live plant material, deciduous trees, evergreen trees, shrubs, other proposed plant materials, mulch, etc.

Plant List Chart showing:

- Plant list, key, quantity, common/botanical name, size, height/spread, number required, number proposed

Comment #18: Per the Crownpoint Development Guide (Pg 30): Please show all plant details and notes including methods of soil preparation, erosion control, soil and vegetation removal, stockpiling and reuse. Also add required statement in 8.3.1.3.8

**1 OVERALL SITE PLAN - SALT SHED**  
A3.1 | 3 of 5 | 1" = 60'-0"

Comment #20: If possible, use a 1" = 20' scale to show more detail of the site plan amendment area?

Is this the landscape Plan? Relabel

| REV   | DESCRIPTION | DATE     |
|-------|-------------|----------|
| ASI-4 | ASI 04      | 11.03.14 |



Boulder Associates, Inc.  
Architecture + Interior Design  
1426 Pearl Street, Suite 300  
Boulder, Colorado 80302  
303.499.7795 F 303.499.7767  
www.boulderassociates.com

PROJECT  
**PARKER ADVENTIST HOSPITAL: SALT SHED**

9395 CROWN CREST BLVD.  
PARKER, COLORADO 80138

SITE  
AMENDMENT

SHEET TITLE  
**PLAN AND ELEVATIONS**

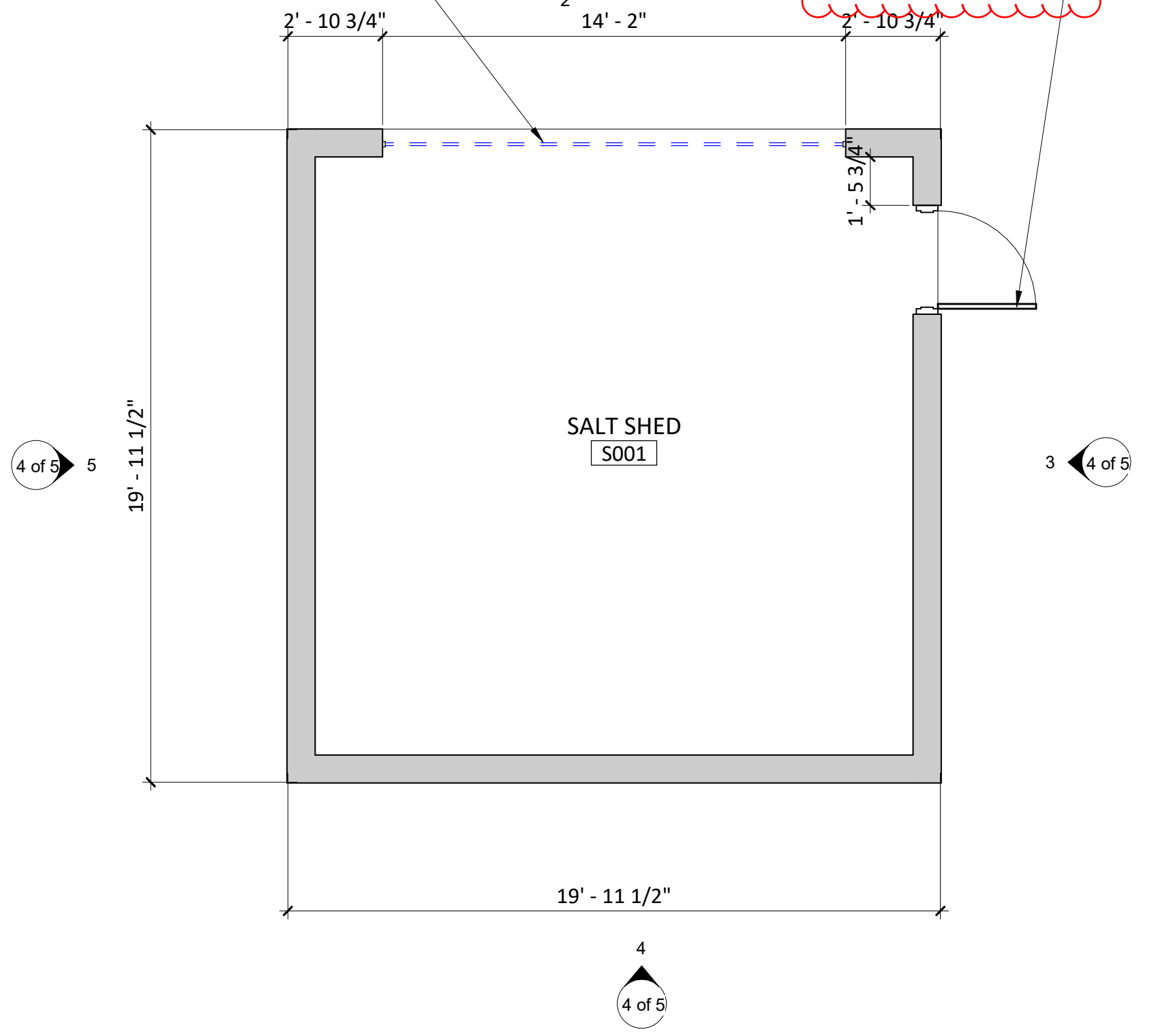
SHEET NUMBER

Comment #21: Add: Door specs to this - Color & Type. Will this be a powered door or manual? Clarify

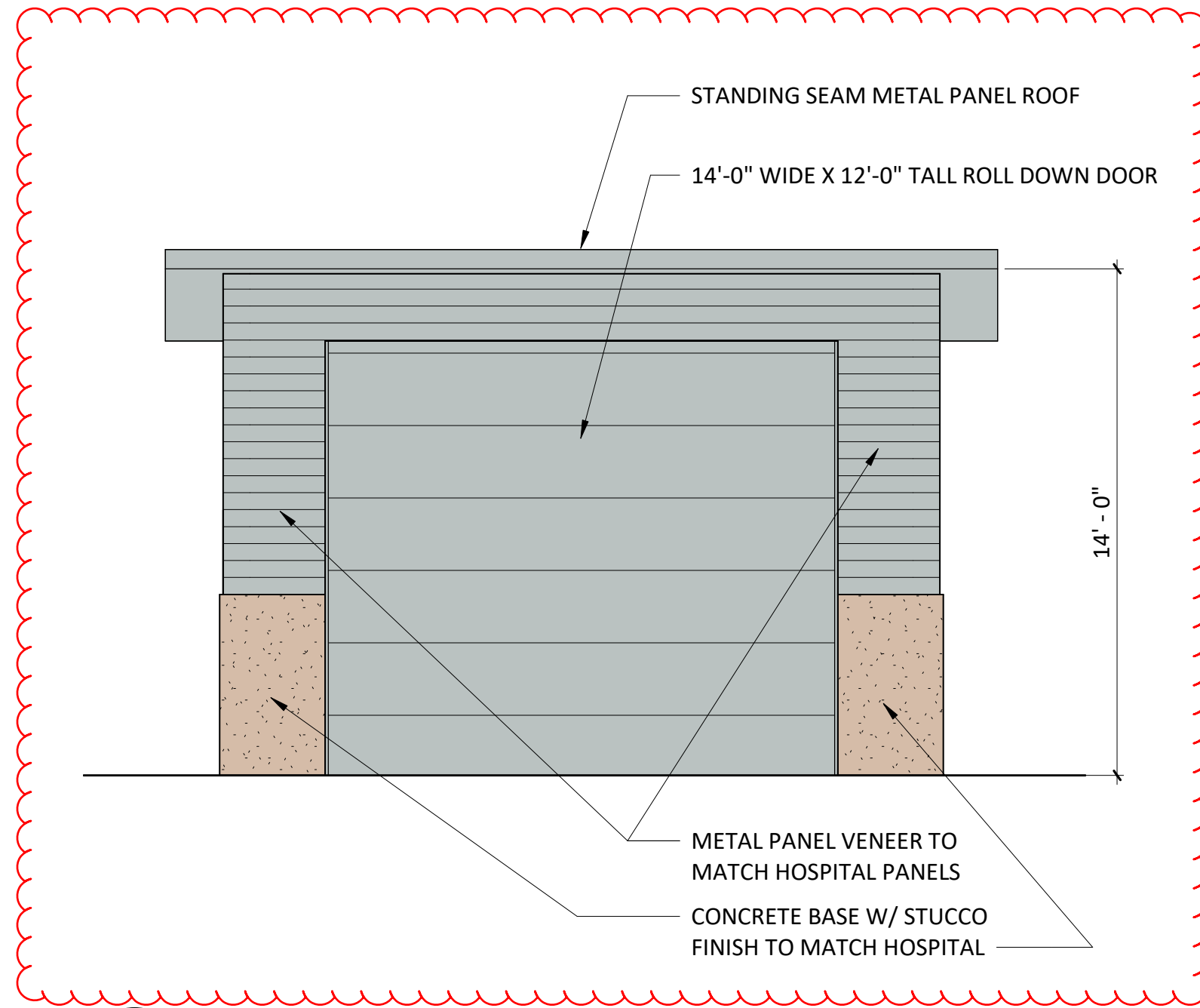
14'-0" WIDE X 10'-0" TALL ROLL DOWN DOOR

PTD HOLLOW METAL DOOR AND FRAME

Add: Door specs to this - Color & Type

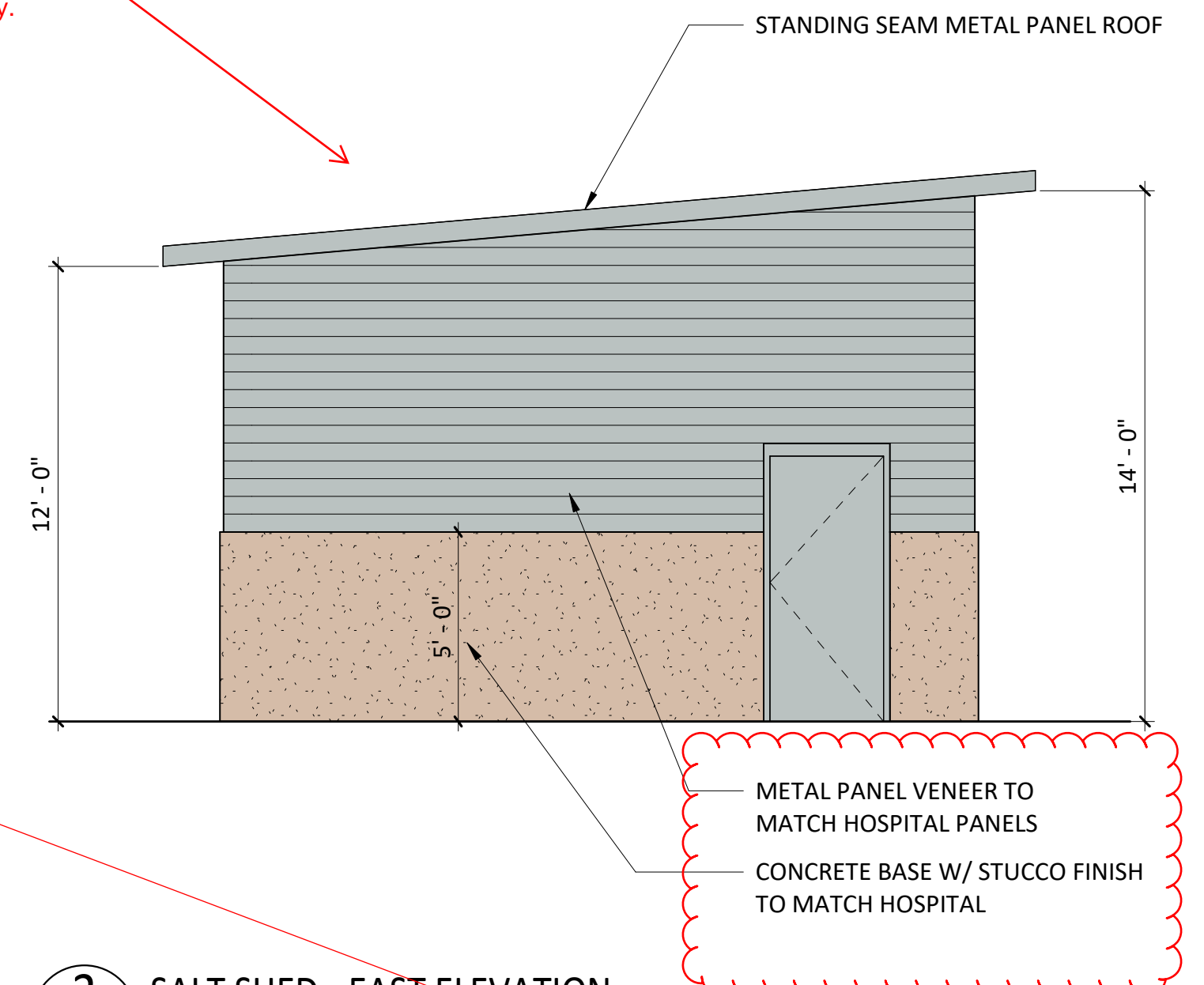


1 SALT SHED FLOOR PLAN  
A2.0A | 4 of 5 | 1/4" = 1'-0"



2 SALT SHED - NORTH ELEVATION  
4 of 5 | 4 of 5 | 1/4" = 1'-0"

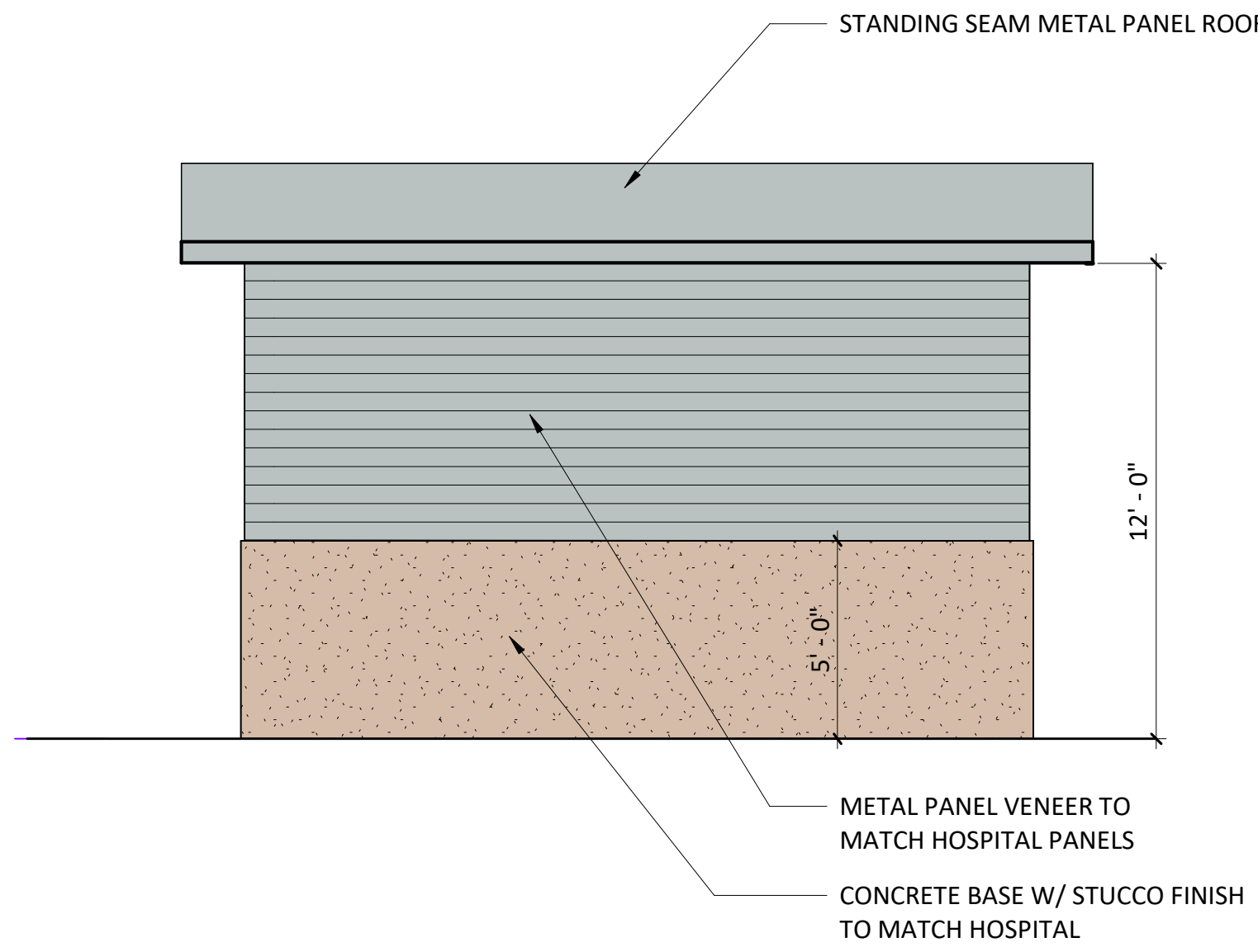
Comment #23: Will there be any vents, or mechanical equipment installed on the roof? If so, needs to be fully screened. Please clarify.



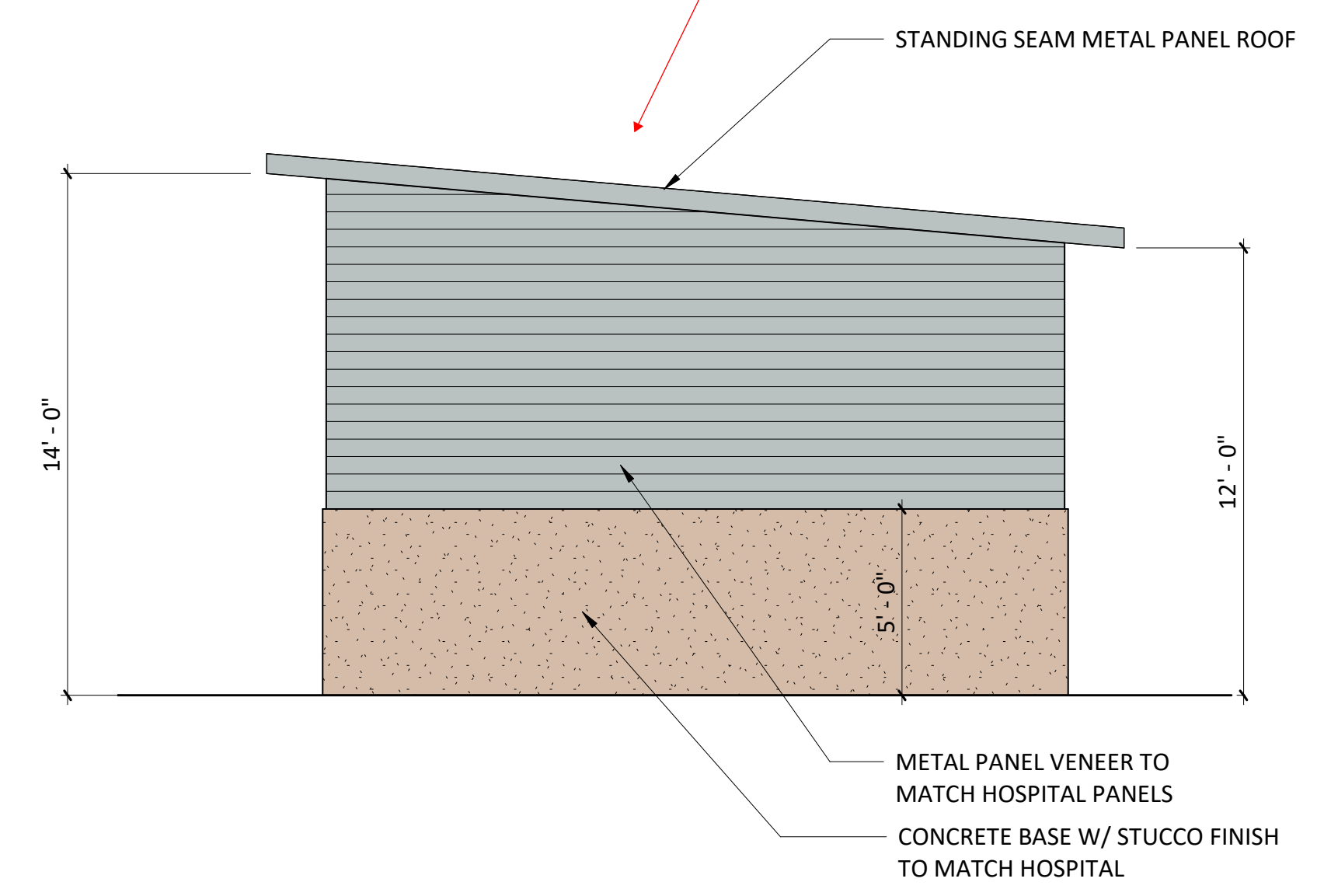
3 SALT SHED - EAST ELEVATION  
4 of 5 | 4 of 5 | 1/4" = 1'-0"

Same comment for these elevations as North Elevation

Comment #22: ADD: Colors of Exterior building materials. Also, add an Exterior Finish Chart showing materials, color that correspond to these drawings.



4 SALT SHED - SOUTH ELEVATION  
4 of 5 | 4 of 5 | 1/4" = 1'-0"



5 SALT SHED - WEST ELEVATION  
4 of 5 | 4 of 5 | 1/4" = 1'-0"

PROJECT NUMBER  
194160.00

DRAWN BY  
Author

DATE  
12-09-2019

REVISIONS  
REV DESCRIPTION DATE

**BOULDER  
ASSOCIATES**

**ARCHITECTS**

Boulder Associates, Inc.  
Architecture + Interior Design  
1426 Pearl Street, Suite 300  
Boulder, Colorado 80302  
303.499.7795 F 303.499.7767  
www.boulderassociates.com

PROJECT  
**PARKER  
ADVENTIST  
HOSPITAL: SALT  
SHED**

9395 CROWN CREST BLVD.  
PARKER, COLORADO 80138

SITE  
AMENDMENT

SHEET TITLE  
**EXISTING  
CONDITIONS**

SHEET NUMBER

**5 of 5**

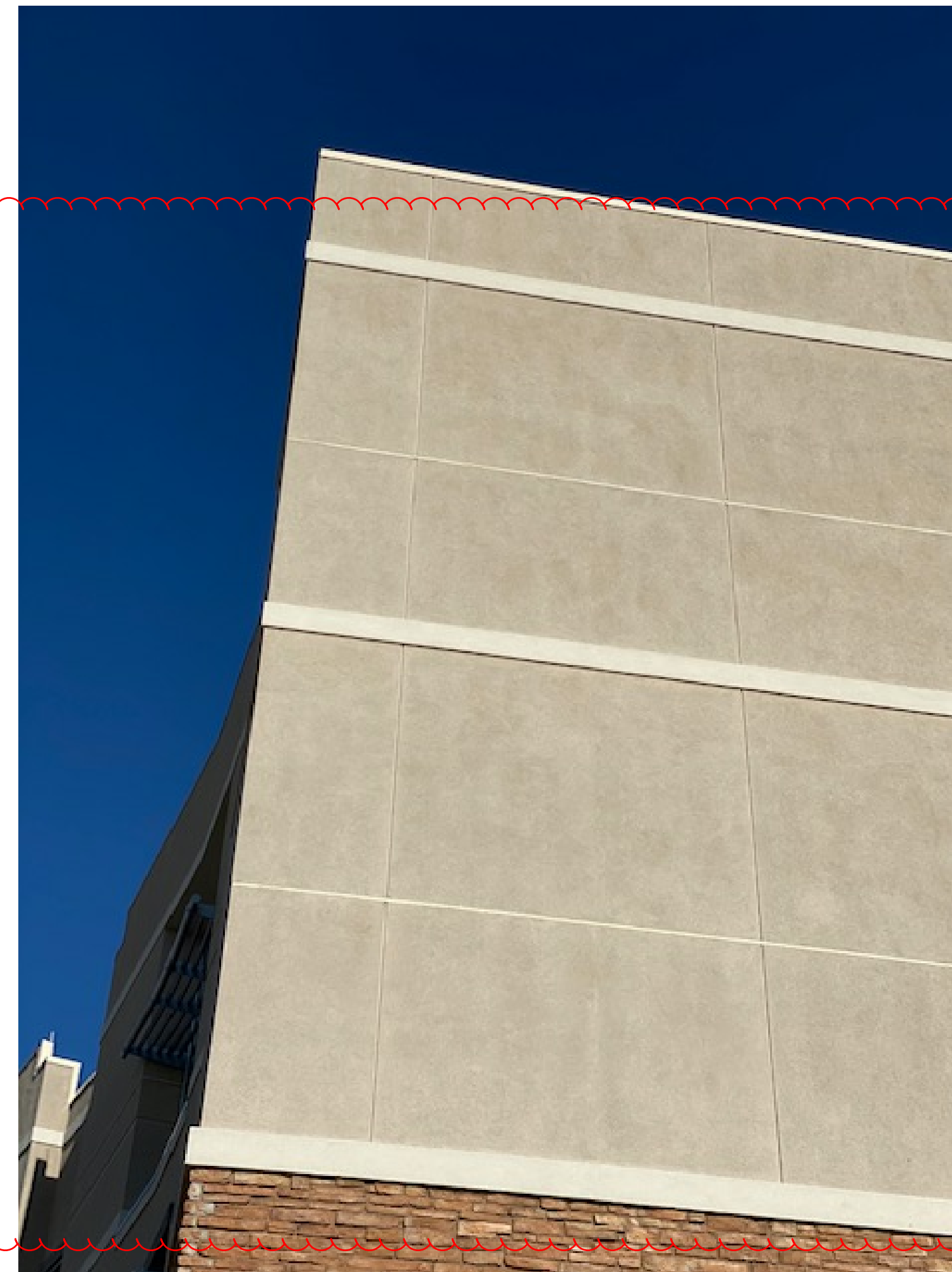


Comment #24: Add:  
Existing Conditions  
Sheet showing  
topography,  
easements, property  
line, and site plan  
area.

EXISTING SITE LOOKING SOUTH



EXISTING METAL PANEL VENEER AND COPING. SHED TO MATCH.



EXISTING STUCCO. SHED TO MATCH.

Comment #25: The  
color materials board  
will need to match  
these colors as closely  
as possible. Ensure  
that the materials  
board matches.