



**SITE PLAN AMENDMENT
PARKER ADVENTIST HOSPITAL
SALT SHED**

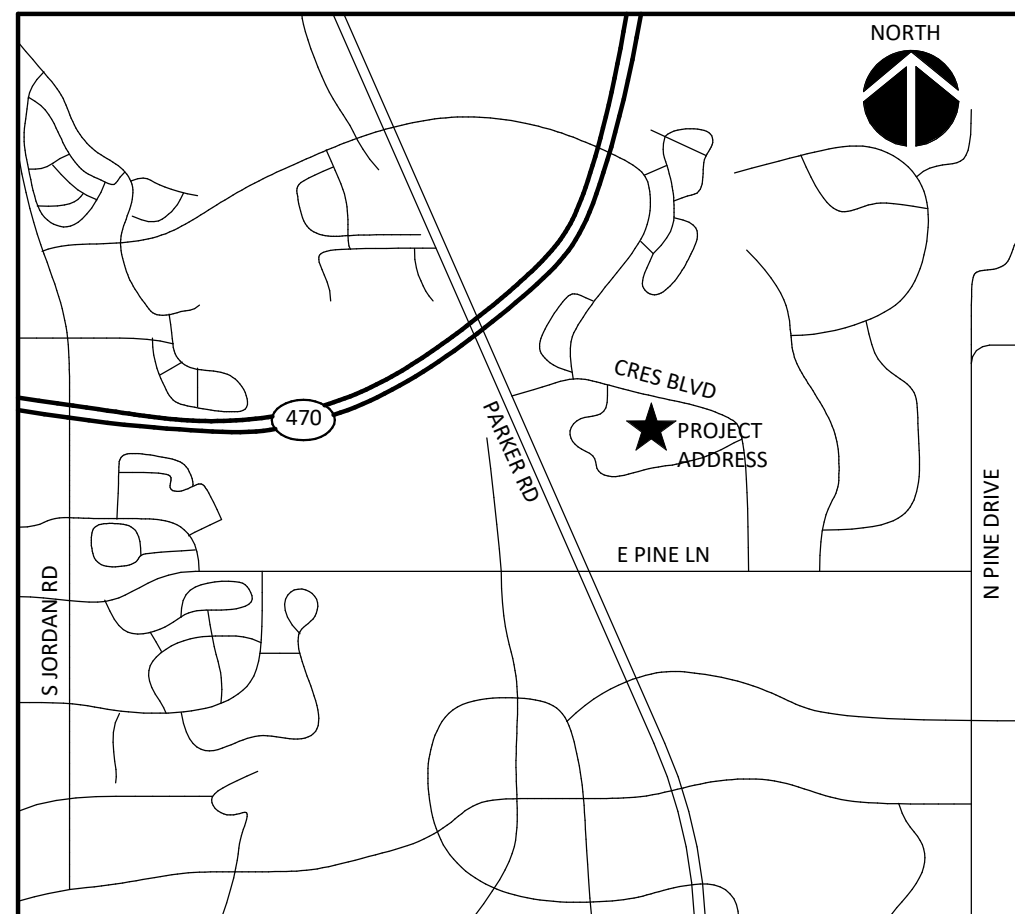
SP19-129

A PORTION OF LOT 1, CROWN POINT F1 AND 28 L1
SECTION 10, TOWNSHIP 6 S., RANGE 66W, LOT 1, FILING 1
TOWN OF PARKER, COUNTY OF DOUGLAS, STATE OF COLORADO
36.35 ACRES; .052 ACRES (SALT SHED SITE)

PROJECT DIRECTORY

OWNER PARKER ADVENTIST HOSPITAL 188 INVERNESS DRIVE WEST, SUITE 100 PARKER CO 80138 PHONE: 303.267.9158 FAX: 303.804.8195	CIVIL ENGINEER S.A. MIRO, INC. 4582 S ULSTER ST PKWY, STE 750 DENVER, CO 80237-2639 PHONE: 303.741.3737 FAX: 720.407.1070
ARCHITECT BOULDER ASSOCIATES, INC. 1426 PEARL STREET, SUITE 300 BOULDER, CO 80302 PHONE: 303.499.7795 FAX: 303.499.7767	CONTRACTOR VERTIX BUILDERS --- PHONE: --- FAX: ---
STRUCTURAL MARTIN & MARTIN ENGINEERS 12499 W COLFAX AVE LAKEWOOD, CO 80215 PHONE: 303.431.6100 FAX: 303.499.7767	

VICINITY MAP



SITE DATA

GROSS LOT AND NET ACREAGE: 36.35 ACRES TOTAL SITE AREA,
.052 ACRES (2279 SF) SALT SHED SITE AREA

DWELLING UNITS: 0

GROSS FLOOR AREA: 400 S.F.

PARKING REQUIREMENTS: NONE

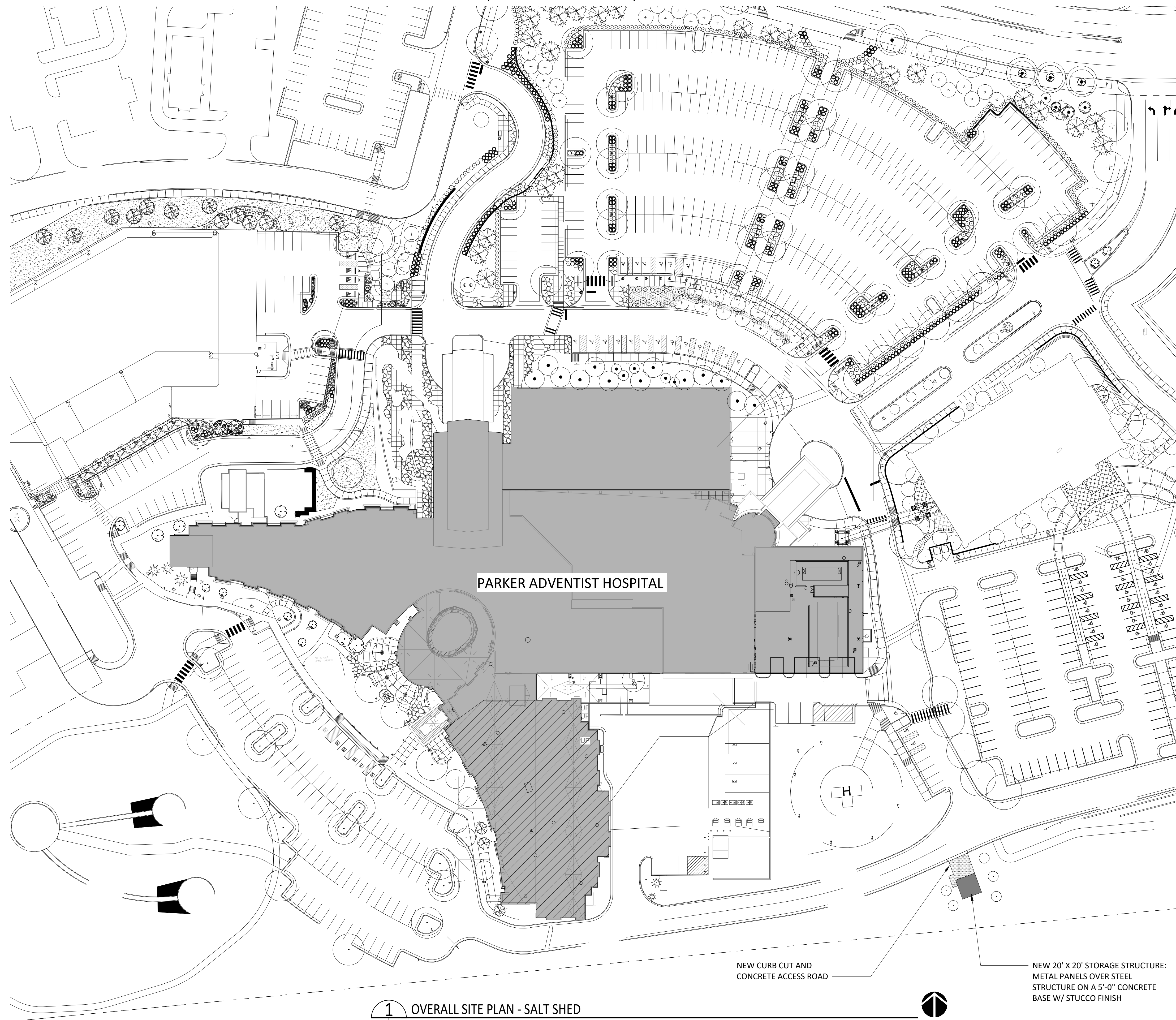
ZONING: PLANNED DEVELOPMENT

USE: MEDICAL/HOSPITAL; ACCESSORY USE -
SALT SHED FOR ROADWAY AND SIDEWALK
MAINTENANCE

SUBDIVISION: CROWNPOINT F#1, 26TH AMENDMENT

SHEET INDEX

- | | |
|--------|--------------------------|
| 1 of 7 | COVER SHEET |
| 2 of 7 | EXISTING CONDITIONS PLAN |
| 3 of 7 | SITE PLAN |
| 4 of 7 | LANDSCAPE PLAN |
| 5 of 7 | LANDSCAPE DETAILS |
| 6 of 7 | PLAN AND ELEVATIONS |
| 7 of 7 | EXISTING PHOTOS |



1 OVERALL SITE PLAN - SALT SHED
A3.1 | 1 of 7 | 1" = 50'-0"

PROJECT NUMBER
194160.00

DRAWN BY
Author

DATE
03-05-2020

REVISIONS

REV	DESCRIPTION	DATE
SDPREV1	SDP REV1	05/22/20



Boulder Associates, Inc.
Architecture + Interior Design
1426 Pearl Street, Suite 300
Boulder, Colorado 80302
303.499.7795 F 303.499.7767
www.boulderassociates.com

PROJECT
**PARKER
ADVENTIST
HOSPITAL: SALT
SHED**

9395 CROWN CREST BLVD.
PARKER, COLORADO 80138

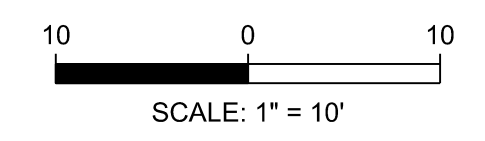
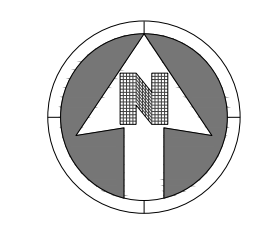
SHEET TITLE
COVER SHEET

SHEET NUMBER
1 of 7

C:\Revit Local Files\162816.00 Parker Adventist Hospital - RTU 3 Replacement-A19 Central - christiansen@boulderassociates.com.rvt 5/22/2020 2:56:15 PM TTBV, 110221

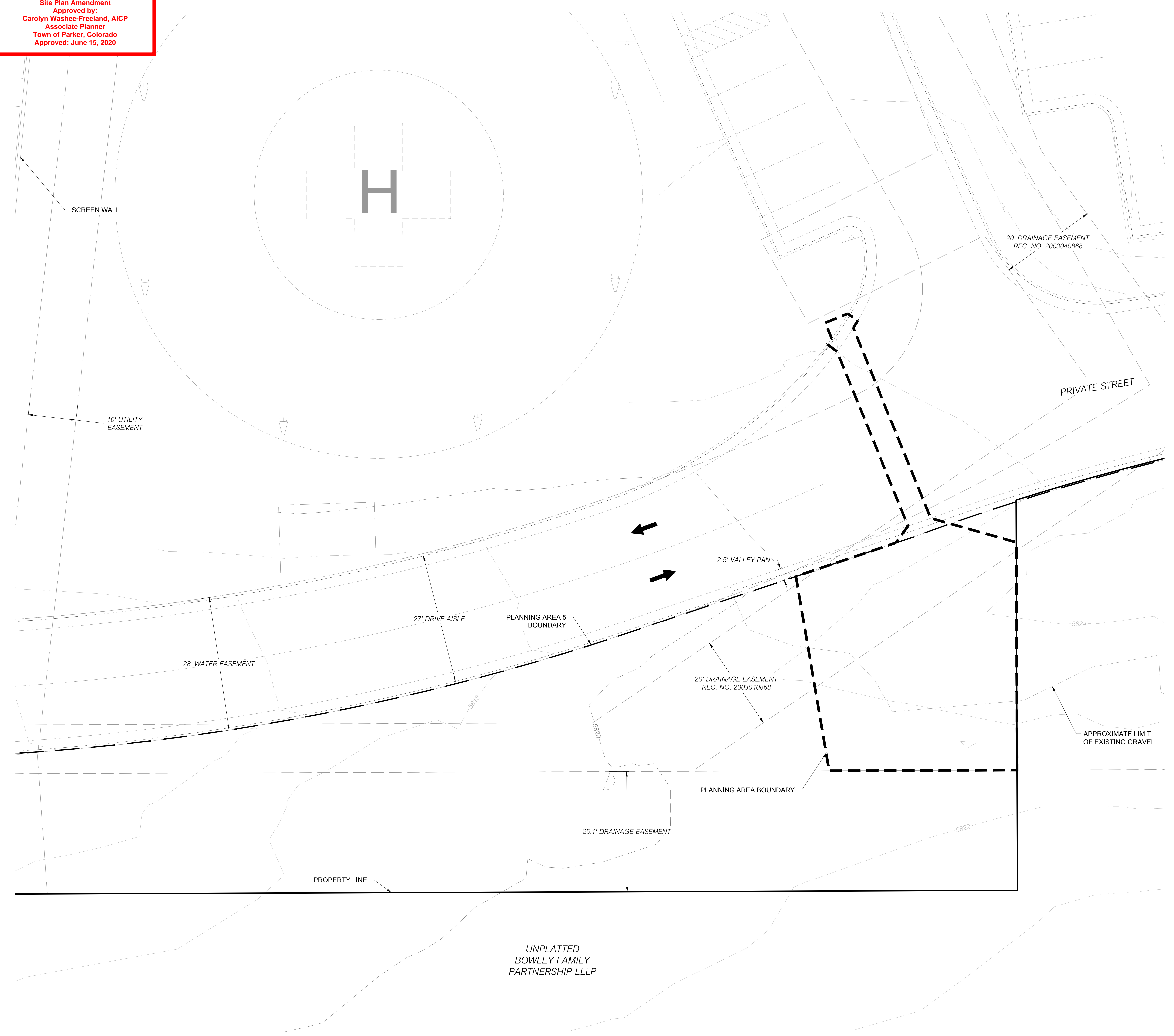
PARKER
COLORADO

Site Plan Amendment
Approved by:
Carolyn Washee-Freeland, AICP
Associate Planner
Town of Parker, Colorado
Approved: June 15, 2020



LEGEND:

- TRAFFIC FLOW AREA
- EXISTING EASEMENT
- MINOR CONTOURS
- MAJOR CONTOURS



BOULDER ASSOCIATES

ARCHITECTS

Boulder Associates, Inc.
Architecture + Interior Design
1426 Pearl Street, Suite 300
Boulder, Colorado 80302
303.499.7795 F 303.499.7767
www.boulderassociates.com

PROJECT
PARKER ADVENTIST HOSPITAL: SALT SHED

9395 CROWN CREST BLVD.
PARKER, COLORADO 80138

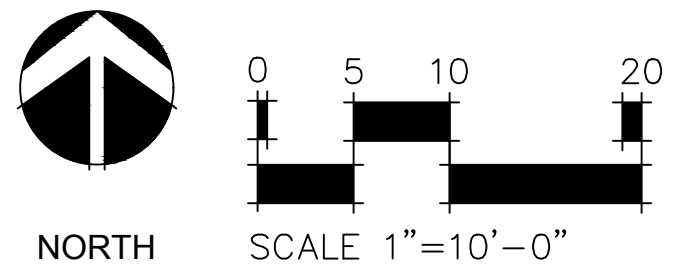
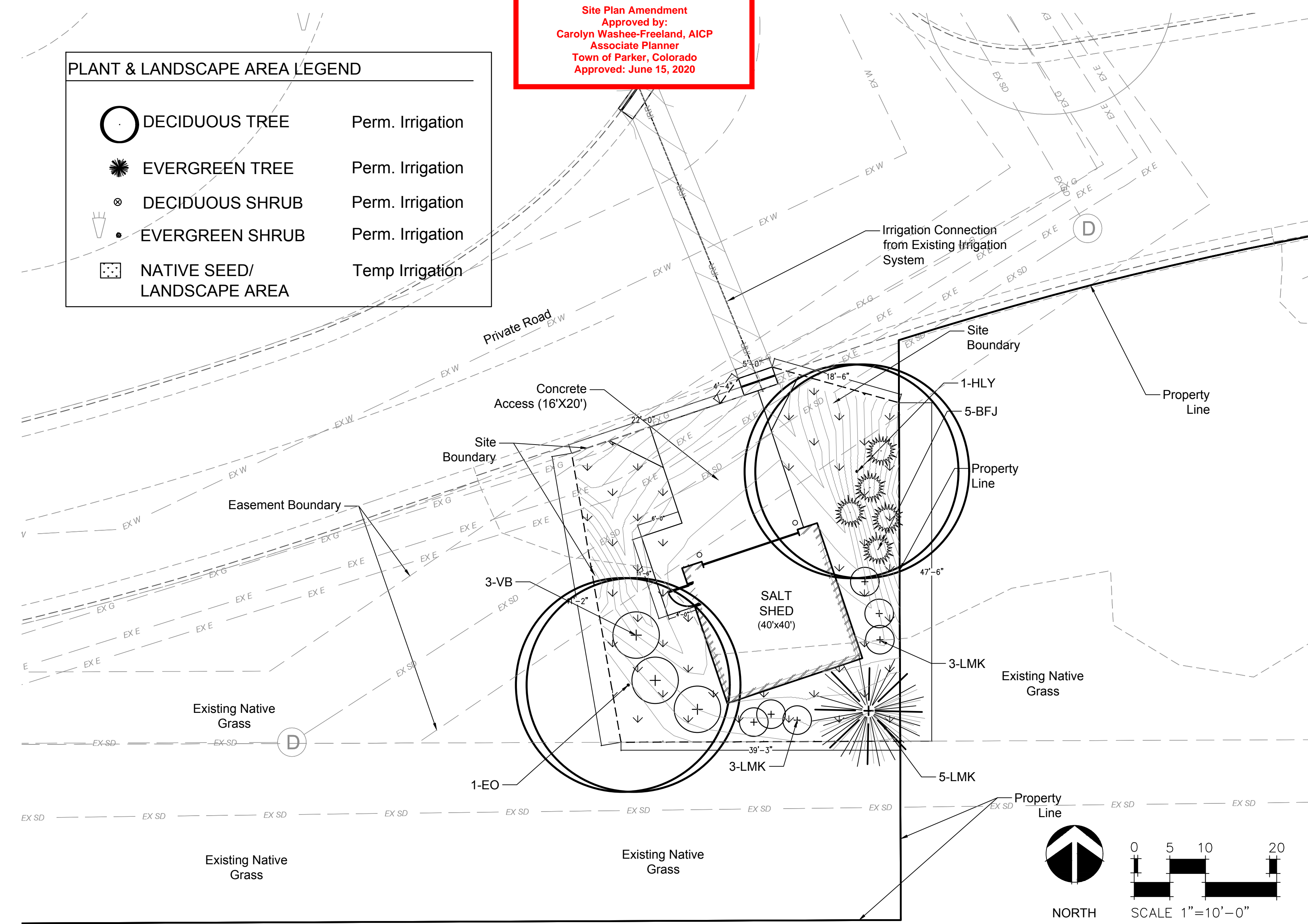
EXISTING CONDITIONS

SHEET NUMBER
2 OF 7



PLANT & LANDSCAPE AREA LEGEND

	DECIDUOUS TREE	Perm. Irrigation
	EVERGREEN TREE	Perm. Irrigation
	DECIDUOUS SHRUB	Perm. Irrigation
	EVERGREEN SHRUB	Perm. Irrigation
	NATIVE SEED/ LANDSCAPE AREA	Temp Irrigation



SITE CALCULATIONS:

Site	2,279 sf.	0.05 Acres
Landscape Area	1,203 sf.	0.03 Acres
Access Road	388 sf.	0.01 Acres
/Walk		
Salt Shed	400 sf.	0.01 Acres

SITE PERIMETER LANDSCAPE REQUIREMENTS:

South Perimeter:	Lineal Feet	1 Tree/5 Shrubs per 40 Lineal Feet	Trees Required	Shrubs Required	Trees Provided	Shrubs Provided	%Evergreen
	39		9	44	10*	74	100%*

* The 50% Evergreen, 50% Deciduous Tree Requirement was not met because only 1 tree was required.

SITE LANDSCAPE REQUIREMENTS:

Interior Landscape:	1 Tree/5 Shrubs per 1,500 s.f.	Square Footage	Trees Required	Shrubs Required	Trees Provided	Shrubs Provided
		1,203	1	5	1	14

STREETSCAPE LANDSCAPE REQUIREMENTS:

Streetscape:	Lineal Feet	Trees Require	Trees Provided
	43	1*	1*

* Tree Set Directly behind Easement Line.

LIVING VS. NON-LIVING LANDSCAPE REQUIREMENTS:

Overall Landscape:	Square Footage	% Living	% Non-Living
Native Seed	1,200 sf.	99%	0%
Wood Mulch Rings	3 sf.		1%

PLANT SCHEDULE

#	SYM	COMMON/ BOTANICAL NAME	SIZE	MATURE SIZE	COMMENTS	MATURITY
DECIDUOUS SHADE TREE						
1	EO	English Oak Quercus robur	2.0" cal.	50'Ht. & 40' Spd.	Specimen quality B&B, staked	
1	HLY	Skyline Honeylocust Gleditsia triacanthos inermis 'Skyline'	2.0" cal.	50'Ht. & 30' Spd.	Specimen quality B&B, staked	
EVEREENTREE						
1	PIN	Pinion Pine Pinus edulis	6' HT.	25'Ht. & 15' Spd.	Specimen quality B&B, staked	
DECIDUOUS/EVERGREEN SHRUBS						
6	LMK	Miss Kim Lilac Syringa meyeri 'Palibin'	5 gal.	5'Ht. & 5' Spd.	Container, 5 canes min. 24"-30" ht.	3-5 Years
5	BFJ	Armstrong Juniper Juniperus chinensis 'Armstrongii'	5 gal.	4'Ht. & 4' Spd.	Container 12"-18" ht.	3-5 Years
3	VB	Koreanspice Viburnum V. carlesii	5 gal.	6'Ht. & 6' Spd.	Container 12"-18" ht.	3-5 Years

LANDSCAPE NOTES

Minimum Plant Size Requirements: Minimum plant size requirements are 2-inch to 2.5-inch caliper for deciduous trees, 1.5-inch to 2-inch caliper for ornamental trees and 6feet to 8-feet in height for evergreen trees. Minimum size requirements for shrubs is 5gallon container, or 18-inch to 24-inch spread for junipers. Plants are required to be mixed between 25% and 50% evergreen trees excluding streetscape requirements.

Weed Barrier: No geotextile fabric shall be used in areas of perennial flower and ground cover plantings.

Mulch Requirements: Wood mulch shall consist of natural cedar fiber mulch and shall be applied a minimum of 4-inches in depth over a weed barrier. Rock or stone shall be between 2-inches and 6-inches in size and at a depth of no less than 3-inches.

Implementation and Coordination of the Landscape Plan: The developer shall ensure that the landscape plan is closely coordinated with plans prepared by other consultants so that the proposed grading, storm drainage or other construction does not conflict with or preclude the installation and maintenance of landscape elements as designated on the landscape plan.

Irrigation: All landscape areas and plant materials must be watered by an automatic irrigation system. Irrigation system design and maintenance must conform to the

standards of the Cottonwood Water and Sanitation District. Approval of this landscape plan does not constitute approval from the Parker Water and Sanitation District.

Maintenance: The developer, their successors and assigns shall be responsible for installation, maintenance and replacement of all landscape materials shown on the approved landscape plan, including the landscaping within the right-of-way.

Landscape shall be continuously maintained including necessary watering, weeding, pruning, and pest control. Replacement of dead or diseased plant material shall be of the same type of plant material as approved by the landscape plan (a tree must replace a tree or a shrub must replace a shrub). Any replacement shall occur within 45 days unless seasonal conditions prohibit the installation of landscaping. In such case, replacement shall occur in the next growing season.

This approved landscape plan shall be on file in the project file in TRAKIT. All landscaping will be installed as delineated on the plan prior to the issuance of any Certificate of Occupancy.

Vehicle Parking Note: No vehicle parking is allowed in any landscape treatment area.

Relocation Considerations: Any required plant material that cannot be installed due to site distance triangles, utility restrictions, light poles, stop sign, etc. shall be provided onsite in alternative locations as determined by the Town.

Install in Native Seed/Landscape Area. Town of Parker Seed Mix 3 (Low Growth Mix).

Species	% P.L.S./Acre
Ephraim Crested Wheatgrass	25%
Perennial Ryegrass	18%
Sheep Fescue	23%
Canada Bluegrass	13%
Blue Fescue	9%
Barley or Oats	12%
TOTAL	100%

Seeding Rate: 50 lbs. Per acre Broadcast

PARKER PROJECT NUMBER
194160.00
DRAWN BY:
RMM
DATE
4/14/2020

REVISIONS

REV.	DESCRIPTION	DATE
	SUBMITTAL 3	05-22-2020



Boulder Associates, Inc.
Architecture + Interior Design
1426 Pearl Street, Suite 300
Boulder, Colorado 80302
303.499.7795 F 303.499.7767
www.boulderassociates.com



Landscape Architecture
303.250.5108

PROJECT
Parker Adventist
Hospital: Salt Shed

9395 CROWN CREST BLVD.
PARKER, COLORADO 80138

SHEET TITLE
LANDSCAPE PLAN

SHEET NUMBER
4 OF 7

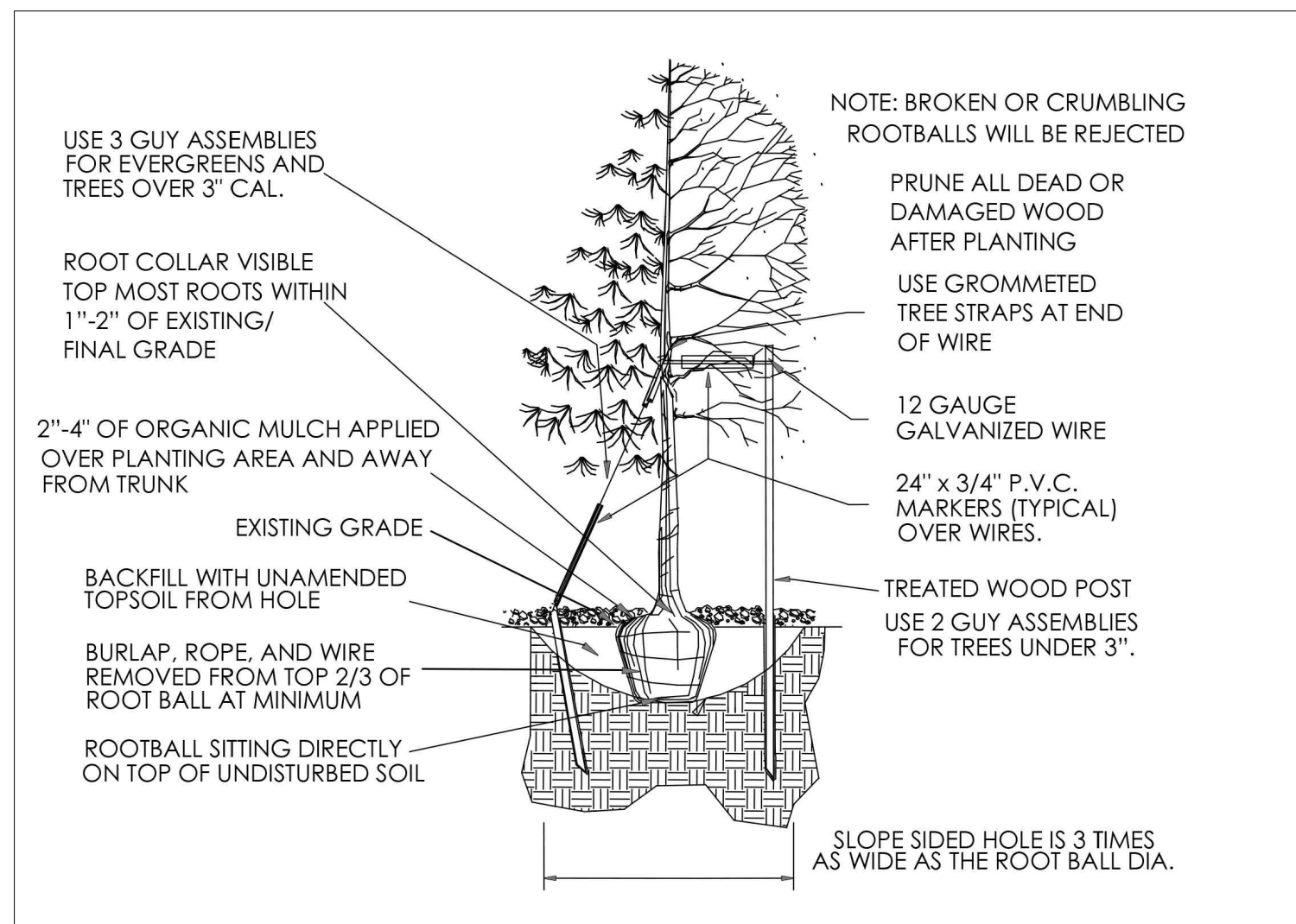
IMAGES

REFS

FILE NAME
PLOT DATE:

TTLB-110221

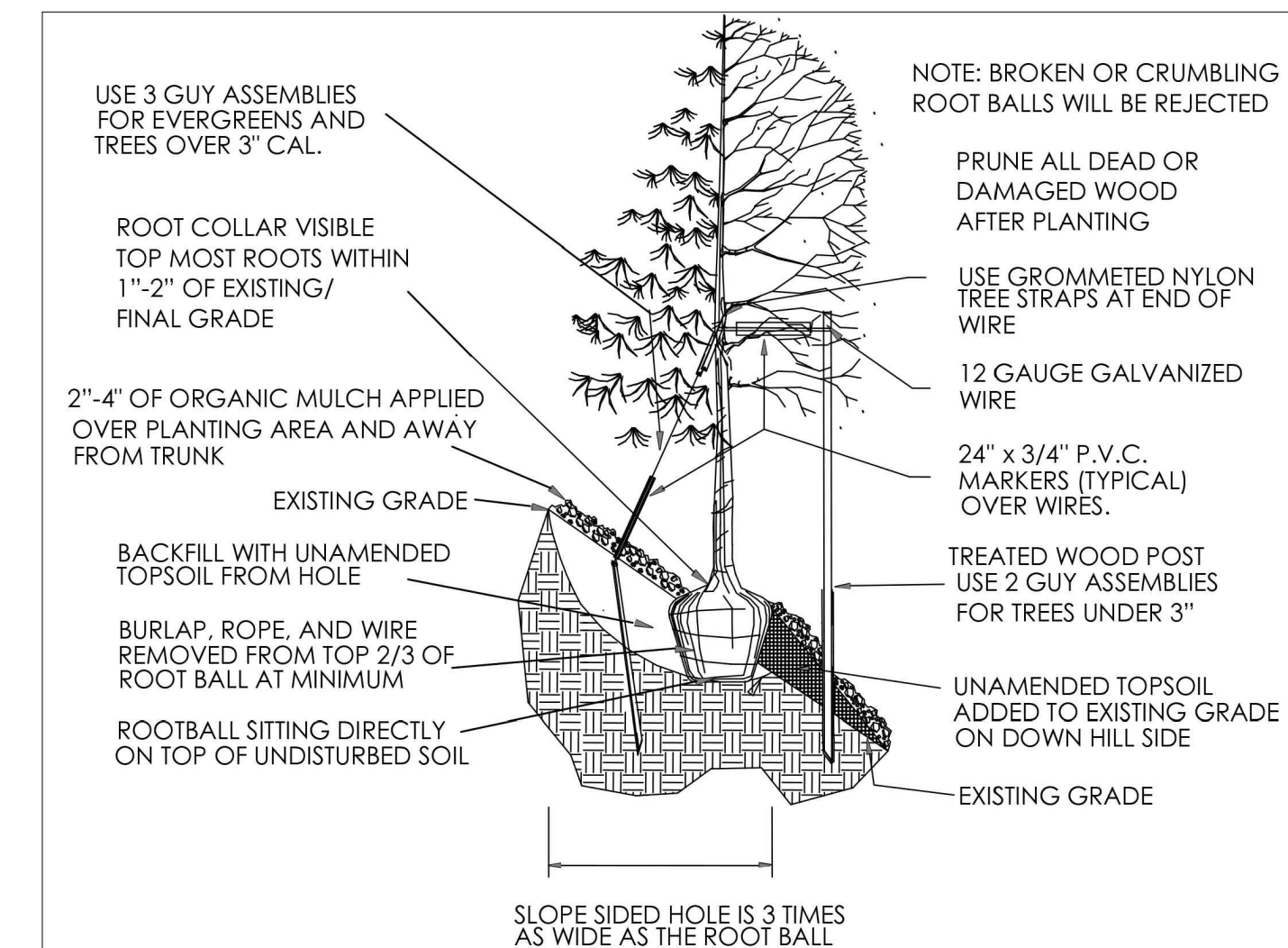
REV.	DESCRIPTION	DATE
	SUBMITTAL 3	05-22-2020



1
7

DECIDUOUS TREE PLANTING

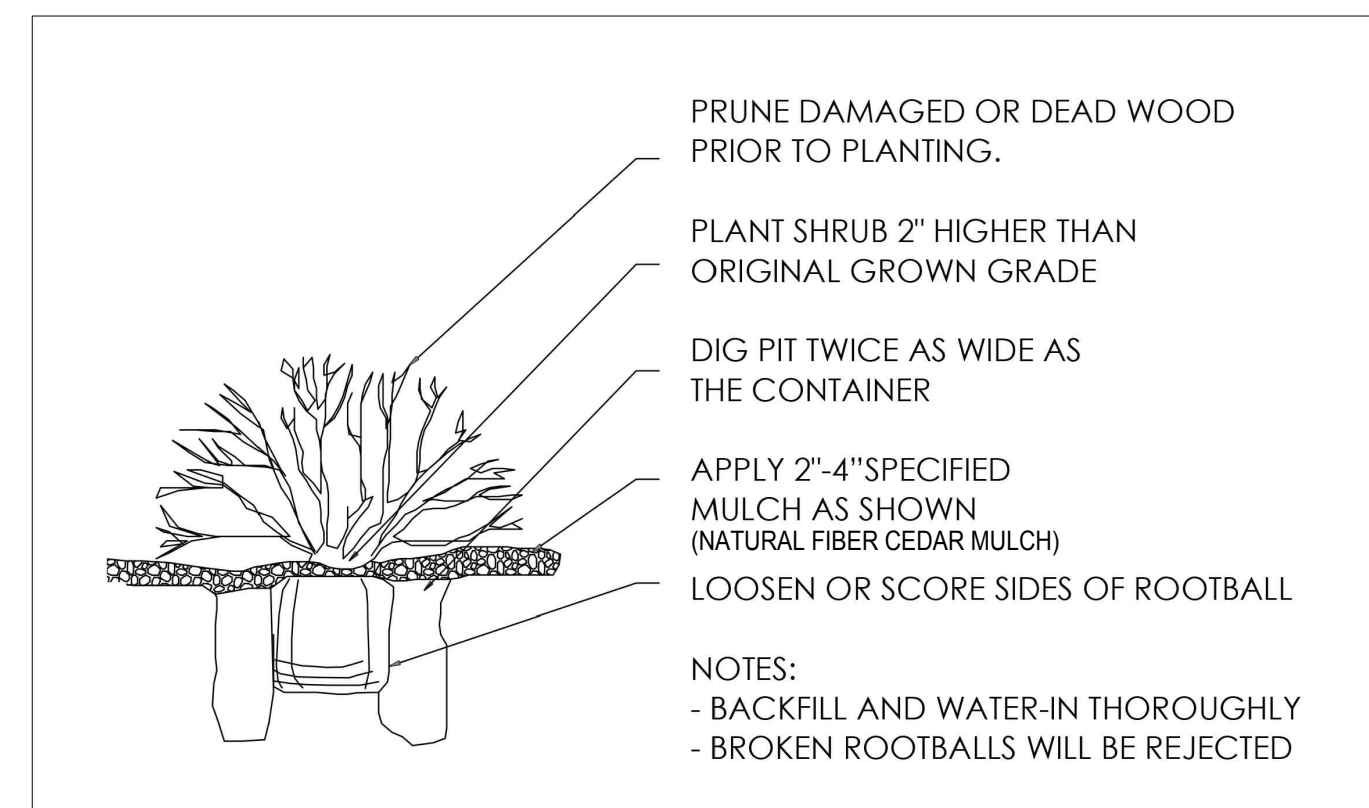
NOT TO SCALE



2
7

TREE PLANTING ON SLOPE

NOT TO SCALE



3
7

SHRUB PLANTING

NOT TO SCALE

PLANTING NOTES:

- EXCAVATE PLANTING HOLES WITH SLOPING SIDES. MAKE EXCAVATION AT LEAST THREE TIMES AS WIDE AS THE ROOT BALL DIAMETER AND NO DEEPER THAN THE DISTANCE FROM THE TOP OF MOST ROOTS IN THE ROOT BALL TO THE BOTTOM OF THE PLANTING HOLES, BUT DO SCORE THE SIDES OF THE PLANTING HOLE. THE PLANTING AREA SHALL BE LOOSEND AND AERATED AT LEAST THREE TIMES THE DIAMETER OF THE ROOT BALL. BACKFILL SHALL CONSIST OF EXISTING ON SITE TOPSOIL-NO AMENDMENTS SHALL BE USED UNLESS OTHERWISE SPECIFIED.
- TREES SHALL BE PLANTED WITH THE ROOT COLLAR/FLARE VISIBLE ABOVE GRADE AND TWO OR MORE STRUCTURAL ROOTS LOCATED WITHIN THE TOP 1" TO 2" OF ROOT BALL FINISH GRADE MEASURED 3" TO 4" FROM TRUNK. THIS INCLUDES TREES THAT ARE SET ON SLOPES (SEE SLOPE PLANTING DETAIL). TREES THAT DO NOT HAVE A VISIBLE ROOT BALL COLLAR WILL BE REJECTED. DO NOT COVER ROOT BALL WITH SOIL. WHEN ROOT BALL WILL REMAIN INTACT, CUT OFF BOTTOM 1/2 OF WIRE BASKET BEFORE PLACING TREE IN HOLE. CUT OFF REMAINDER OF BASKET AFTER TREE IS SET IN HOLE.
- REMOVE BASKET COMPLETELY. AT MINIMUM, THE TOP 3/4 OF BURLAP AND BASKET SHALL BE REMOVED FROM ROOT BALL ON ALL TREES. REMOVE ALL NYLON TIES, TWINE, ROPE AND BURLAP. REMOVE UNNECESSARY PACKING MATERIAL.
- FORM SOIL INTO 3" TO 5" TALL WATERING RING (SAUCER) AROUND PLANTING AREA. THIS IS NOT NECESSARY IN IRRIGATED TURF AREAS. APPLY 2" TO 4" DEPTH OF SPECIFIED MULCH OVER PLANTING AREA AND INSIDE SAUCERS, AWAY FROM TRUNK.
- STAKING AND GUYING OF TREES IS OPTIONAL IN MOST PLANTING SITUATIONS. IN AREAS OF EXTREME WINDS, OR ON STEEP SLOPES, STAKING MAY BE REQUIRED TO STABILIZE TREES. STAKING AND GUYING MOST BE REMOVED WITHIN 1 YEAR OF PLANTING DATE.
- TREE WRAP IS NOT TO BE USED ON ANY NEW PLANTINGS, EXCEPT LATE FALL PLANTING SITUATIONS, AND ONLY AFTER THE CONSULTATION WITH THE TOWN ARBORIST.
- RESETTING IMPROPERLY PLANTED TREE WILL ONLY BE ALLOWED IF IT IS DETERMINED THAT DOING SO WILL IN NO WAY COMPROMISE THE ROOT BALL, AND SHALL ONLY BE DONE WITH THE APPROVAL OF THE TOWN ARBORIST.



BOULDER ASSOCIATES

ARCHITECTS

Boulder Associates, Inc.
Architecture + Interior Design
1426 Pearl Street, Suite 300
Boulder, Colorado 80302
303.499.7795 F 303.499.7767
www.boulderassociates.com



Landscape Architecture
303.250.5108

PROJECT

Parker Adventist Hospital: Salt Shed

9395 CROWN CREST BLVD.
PARKER, COLORADO 80138

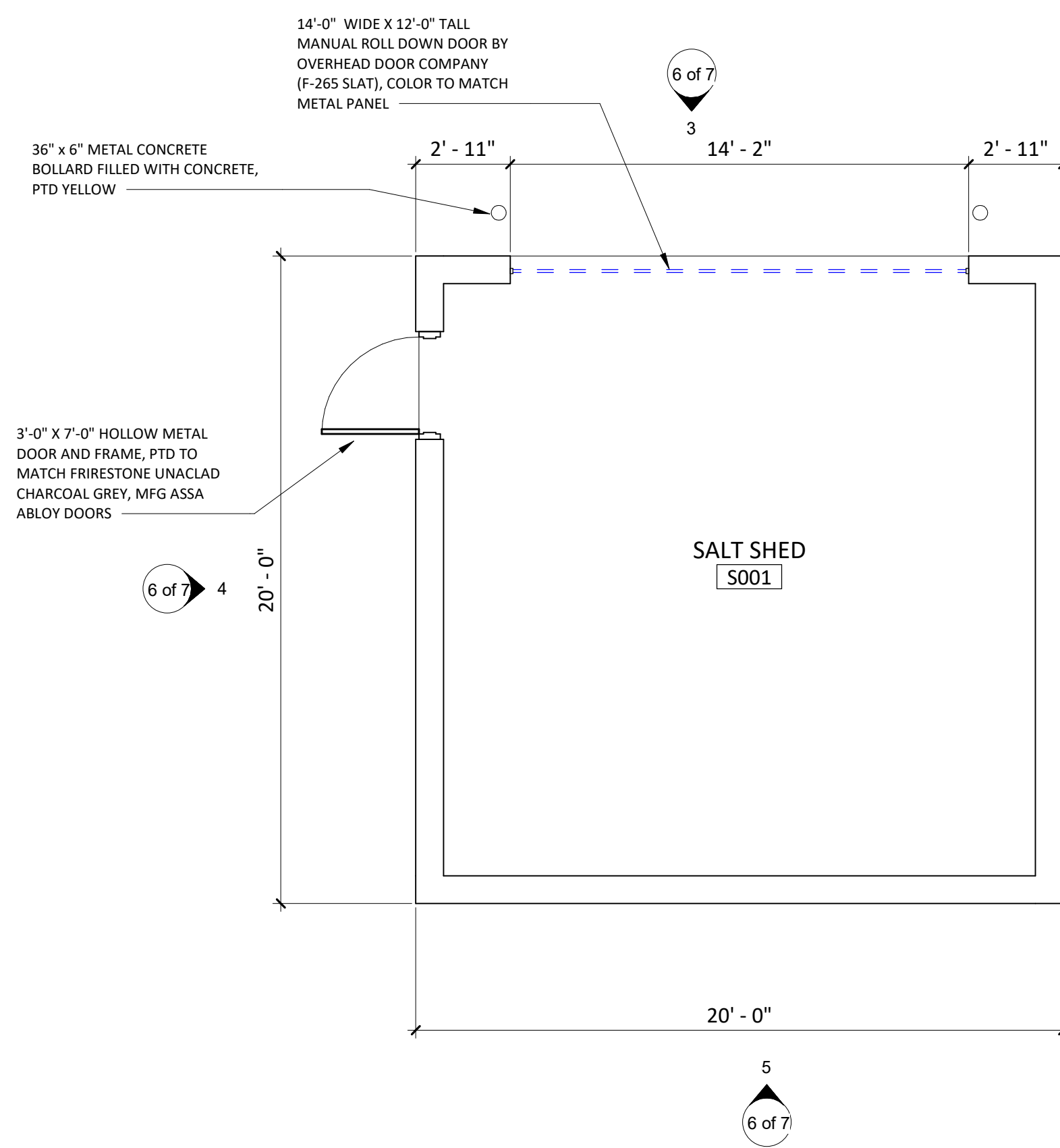
SHEET TITLE

LANDSCAPE DETAILS

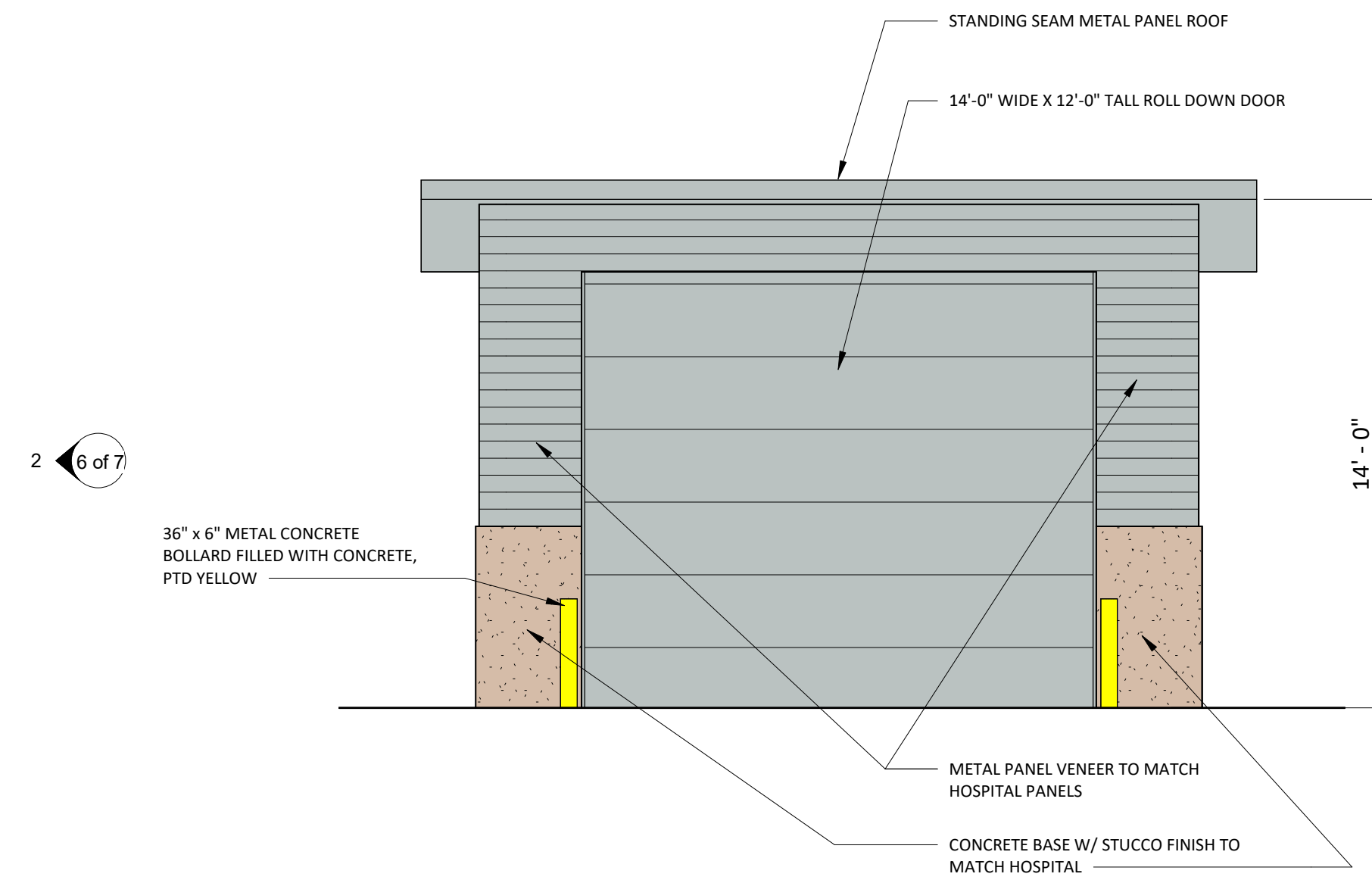
SHEET NUMBER

5 OF 7

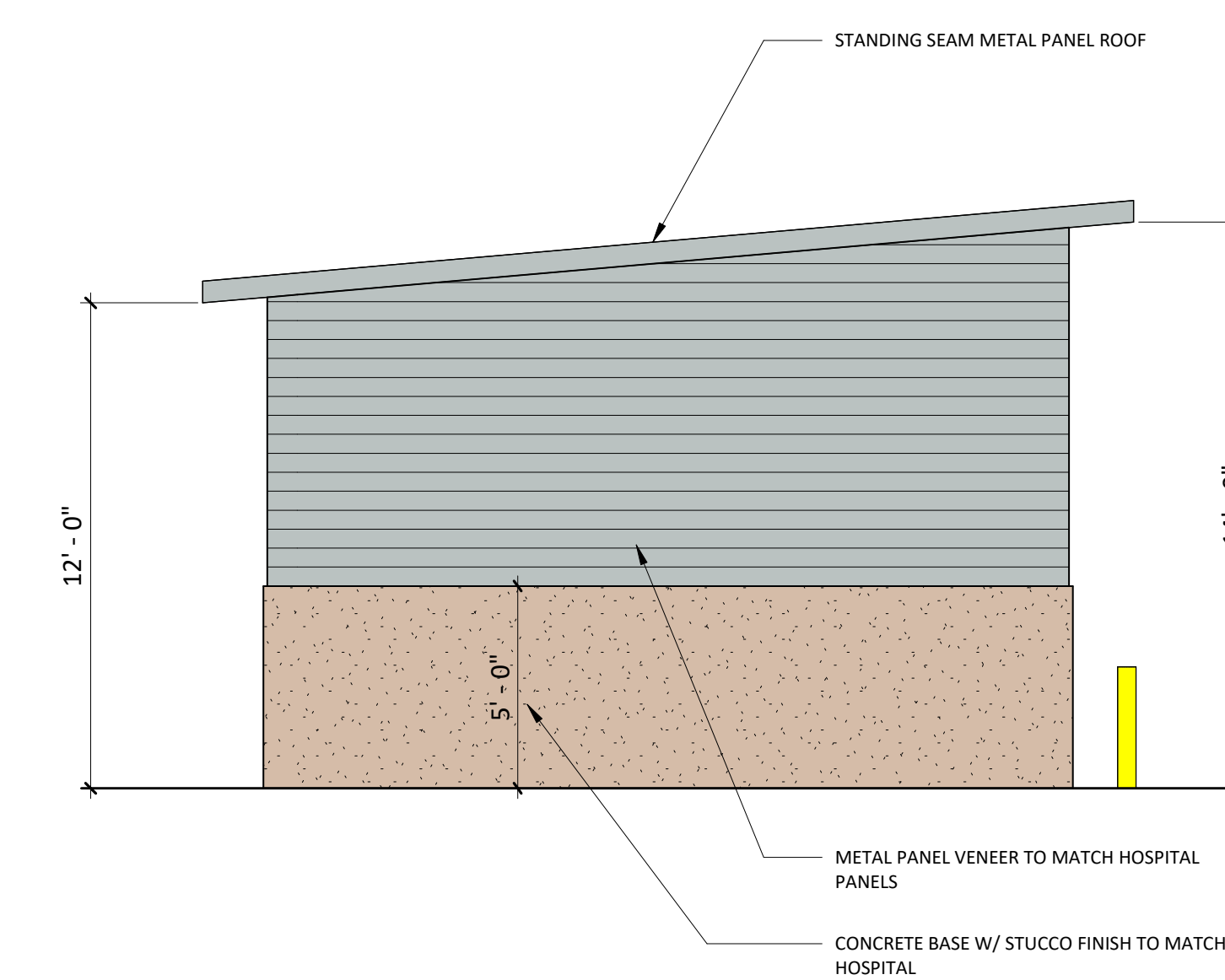
REV	DESCRIPTION	DATE
ASI-4	ASI 04	11.03.14
SDPREV1	SDP REV1	05/22/20



1 SALT SHED FLOOR PLAN
A2.0A | 6 of 7 | 1/4" = 1'-0"



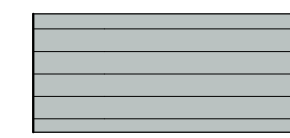
2 SALT SHED - NORTH ELEVATION
6 of 7 | 6 of 7 | 1/4" = 1'-0"



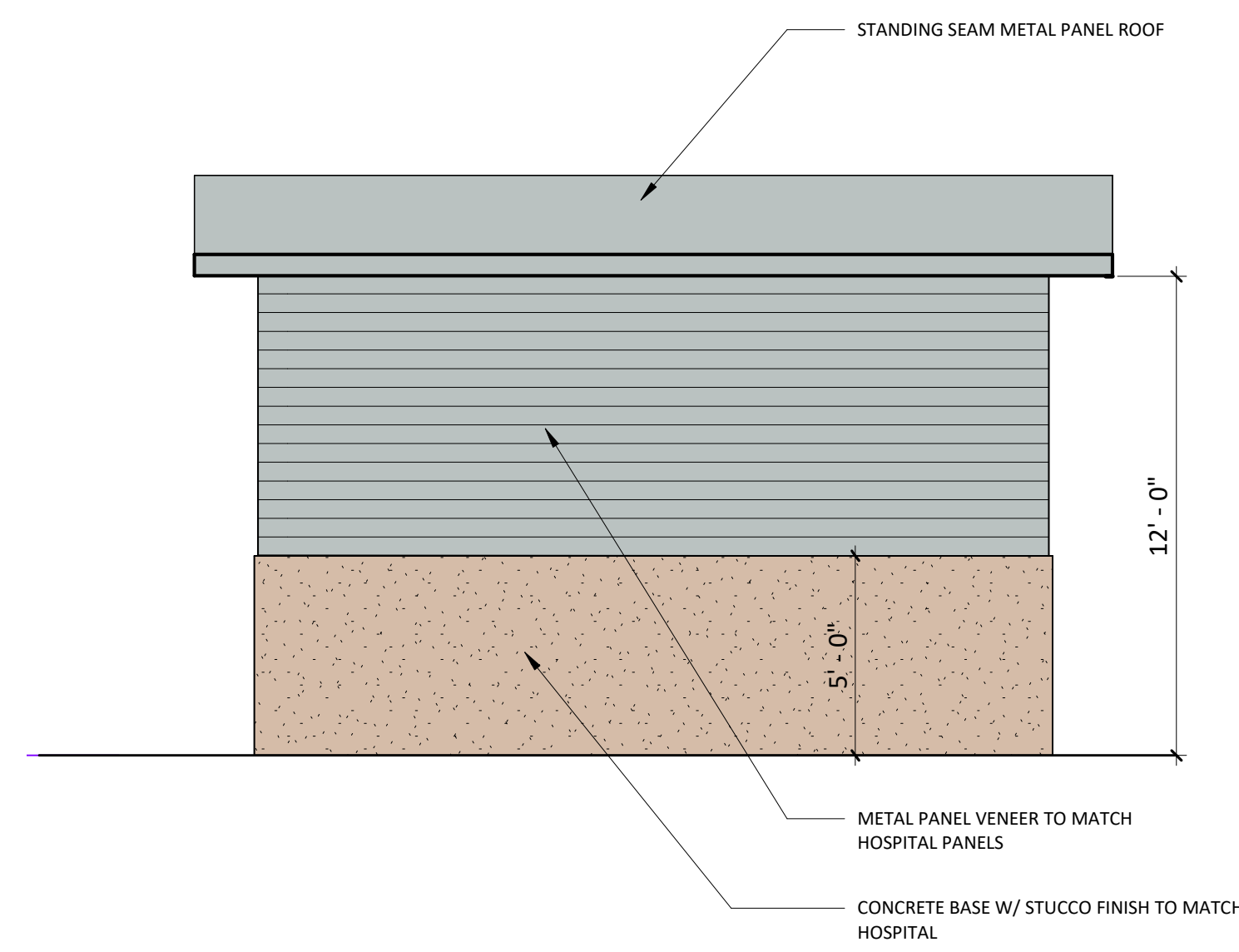
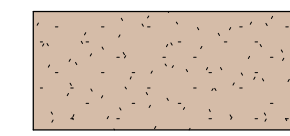
3 SALT SHED - EAST ELEVATION
6 of 7 | 6 of 7 | 1/4" = 1'-0"

SALT SHED MATERIALS LEGEND

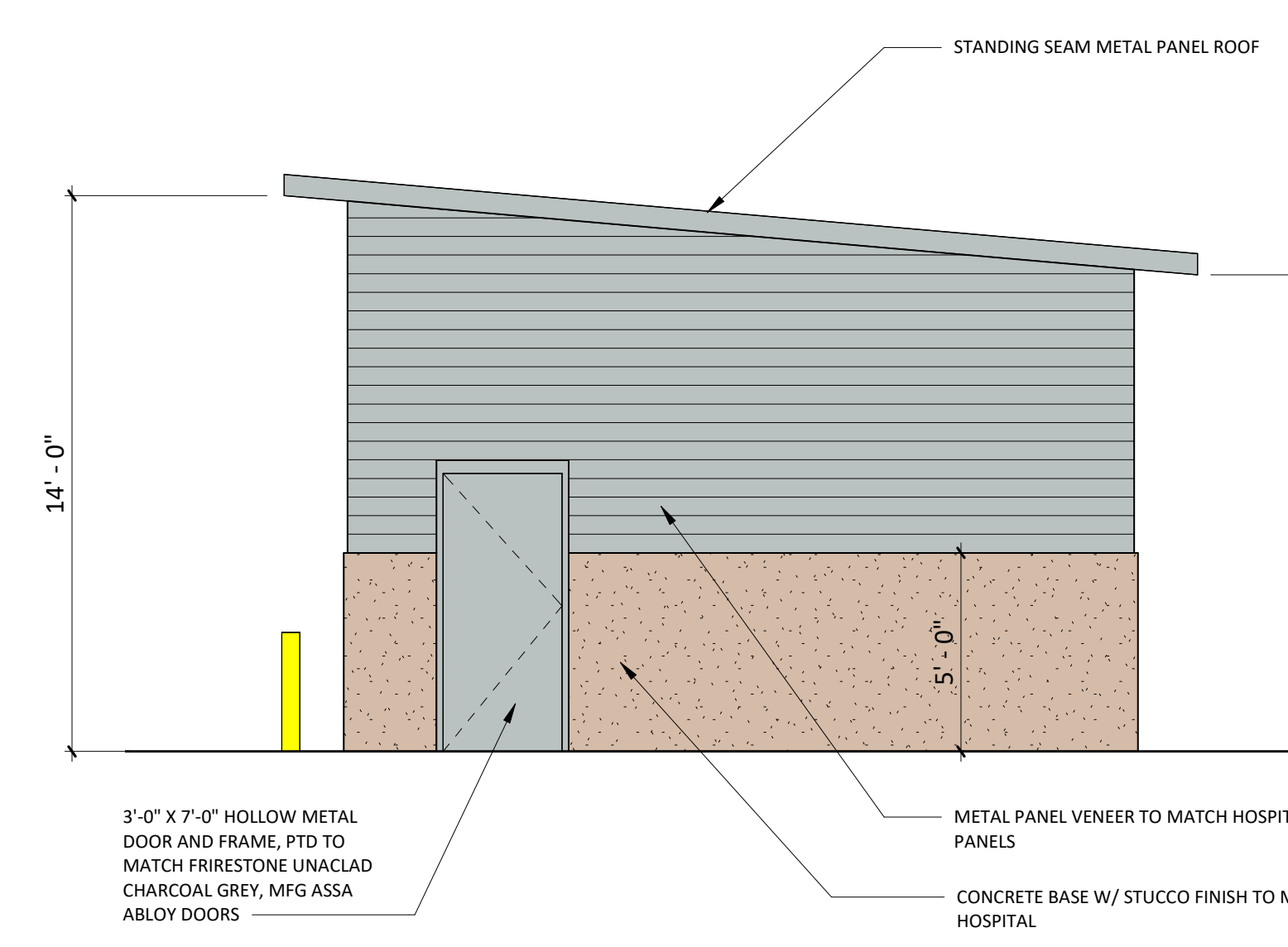
METAL PANEL, ROLL DOWN DOOR, STANDING SEAM METAL ROOF, AND HOLLOW METAL DOOR. COLOR TO MATCH FIRESTONE UNACLAD CHARCOAL GREY (MATCH EXISTING METAL PANEL)



STUCCO, TAUPE COLOR TO MATCH EXISTING HOSPITAL



4 SALT SHED - SOUTH ELEVATION
6 of 7 | 6 of 7 | 1/4" = 1'-0"



5 SALT SHED - WEST ELEVATION
6 of 7 | 6 of 7 | 1/4" = 1'-0"



Boulder Associates, Inc.
Architecture + Interior Design
1426 Pearl Street, Suite 300
Boulder, Colorado 80302
303.499.7795 F 303.499.7767
www.boulderassociates.com

PROJECT
PARKER ADVENTIST HOSPITAL: SALT SHED

9395 CROWN CREST BLVD.
PARKER, COLORADO 80138

SHEET TITLE
PLAN AND ELEVATIONS

SHEET NUMBER

6 of 7



Boulder Associates, Inc.
 Architecture + Interior Design
 1426 Pearl Street, Suite 300
 Boulder, Colorado 80302
 303.499.7795 F 303.499.7767
 www.boulderassociates.com

PROJECT
**PARKER
 ADVENTIST
 HOSPITAL: SALT
 SHED**

9395 CROWN CREST BLVD.
 PARKER, COLORADO 80138

SHEET TITLE
EXISTING PHOTOS

SHEET NUMBER



EXISTING SITE LOOKING SOUTH



EXISTING METAL PANEL VENEER AND COPING. SHED TO MATCH.



EXISTING STUCCO. SHED TO MATCH.