

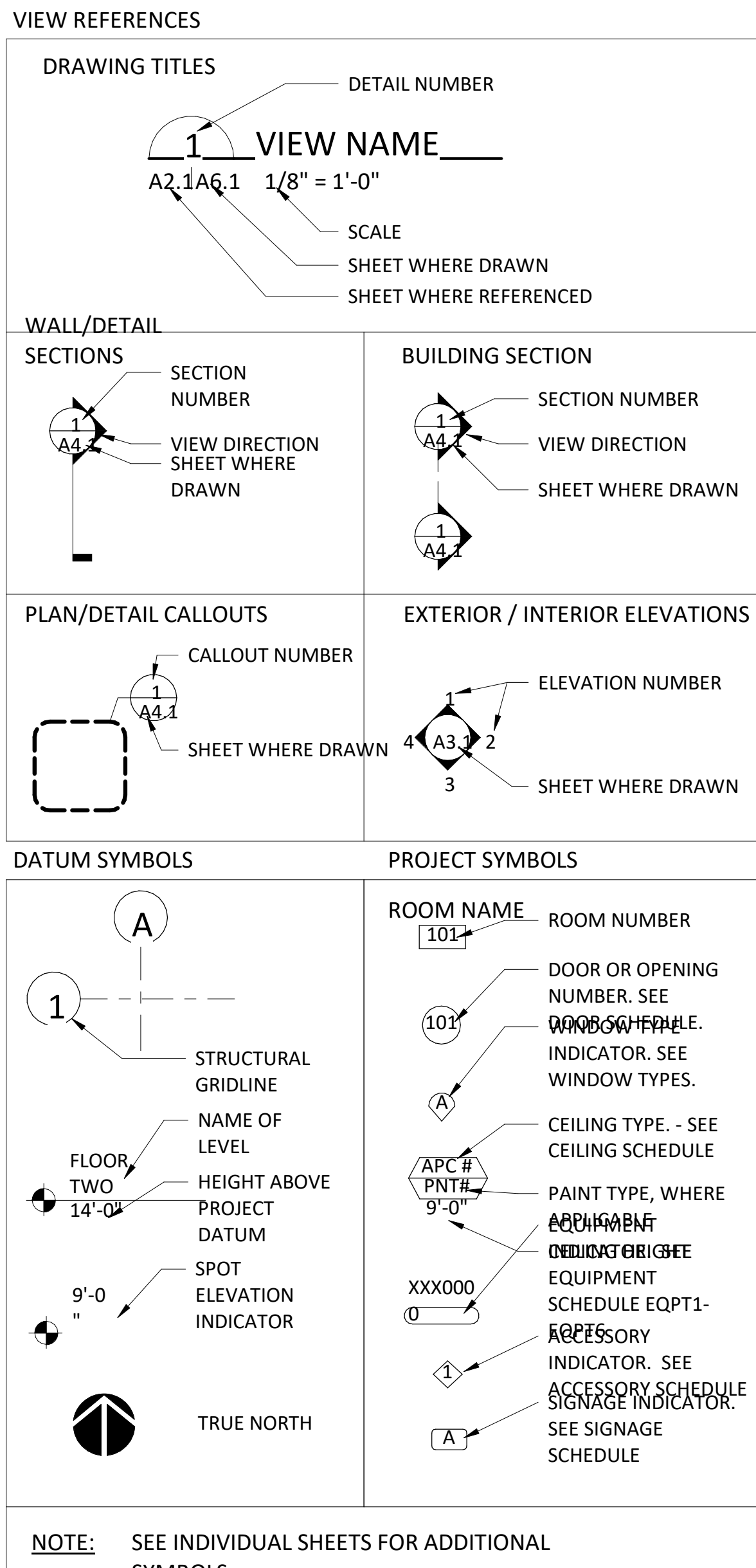
PARKER ADVENTIST HOSPITAL : SALT SHED - SITE PLAN AMMENDMENT

PARKER, COLORADO

ABBREVIATIONS

A/C	air conditioning	FND	foundation	PCF	pounds per cubic foot
AB	bolt	FOC	face of concrete	PCT CONC	precast concrete
ABV	above	FOF	face of finish	PERF	perforate (d)
AC	acoustical	FOM	face of masonry	PERI	perimeter
AC BD	acoustic board	FOS	face of stud	PFN	prefinished
AC TL	acoustic tile	FR	floor (ing)	PHW	panic hardware
AC	asphaltic concrete	FPL	floor plate	PK	parking
ACC	access	FR	fire resistant	PL	plate
ACC PNL	access panel	FR	frame (d) (ing)	PLAS	plaster
ADH	adhesive	FRC	fire-resistant coating	PLF	pounds per linear foot
ADI	adjacent	FRT	fire-resistant	PLY	plywood
ADJ	adjustable	FS	floor sink	PNT	panel (ed) (ing)
AFF	above finished floor	FTG	footing	PRE	pre
AGG	aggregate	FUR	furred (ing)	PNT	prefabricate (d)
AL or ALUM	aluminum	FUT	future	PRE-FAB	preformed
ALT	alternate	GA	gage, gauge	PSC	prestressed concrete
ALPA	area line pressure alarm	GALV	galvanized	PSC	pounds per square foot
ANC	anchor, anchorage	GAB	grab bar	PT	point
ANOD	anodized	GC	general contract (or)	PTC	post-tensioned concrete
APPROX	approximately	GR	grade	PTD	paper towel dispenser
ARCH	architect (ural)	GR	glass fiber reinforced	PTN	partition
ASPH	asphalt	GRC	concrete	PTR	paper towel receptor
AUTO	automatic	GI	galvanized iron	PVC	poly vinyl chloride
		GK	gasket	PVMT	pavement
BD	board	GL	glass, glazing		
BEL	below	GLB	glass block	QT	quarry tile
BET	between	GLS	gloss	R	radius
BIT	bituminous	GP	galvanized pipe	R	riser (s)
BLG	block	GRN	granite	RA	return air
BLKG	blocking	GR	grout	RB	rubber base
BM	beam	GR	grout	RBT	rabbit
BD	bottom of	GWB	gypsum wallboard	RD	roof drain
BOT	bottom	GYP BD	gypsum board	RE or REF	reference
BRG	bearing plate	GYP PLAS	gypsum plaster	REFR	refrigerator
BRK	brick	GYP LA	gypsum lath	REG	register
BRZ	bronze	GYP TL	gypsum tile	REIN	reinforce (d) (ing)
BSMT	basement	HB	hose bibb	REM	remove
BT	but	HBD	hardboard	RES	resilient
BU BD	bulletin board	HC	hollow core	RET	return
BUR	built-up roof	HDR	heavy duty	RFG	revision
BVL	bevel	HDR	hardware	RFL	reflect (ed) (ive) (or)
		HDM	hardwood	RH	right hand
CAB	cabinet	HGT	height	RM	room
CB	code blue	HMT	hollow metal	RO	rough opening
CCTV	cable television	HM	hour	ROW	right of way
CEM PLAS	cement plaster (portland)	HORIZ	horizontal	RVS	reverse
CEM	cement	HTG	heating	RVT	rivet
CEK	ceramic	HVAC	heating/ventilating/air conditioning	S	slab
CG	corner guard	HWD	hardwood	SC	solid core
CI	circle	ID	inside diameter	SCN	schedule
CK	caulk (ing), caulk (ing)	INCL	include (d) (ing)	SCN	screen
CL	center line	INS CONC	insulating concrete	SEC	section
CLG HGT	ceiling height	INSUL	insulate (d) (ion)	SK	square feet (foot)
CLK BD	chalkboard	INT	interior	SLS	slit
CLR	clear	INV	invert	SH	sheathing
CLS	closure	IPS	iron pipe size	SHG	similar
CO	concrete masonry unit (s)	J	joist	SL	sleeve
COL	column	JAN CLO	janitor closet	SMS	sheet metal screw
COMB	combination	JF	joint filler	SS	stainless steel
COMP	compress (ed) (ion) (ible)	JT	joint	SP	soundproof
COMPO	composition, composite	K	kitchen	SPC	spacer
COMPT	compartment	KO	knock-out	SPEC	specification (s)
CONC	concrete	L	length	SPK	speaker
CONCT	construction	LAB	laboratory	SPL	special
CONT	continue, continuous	LAD	ladder	SQ	square
CONTR	contract (or)	LAM	laminate	SS	stainless steel
CORR	corrugated	LAV	lavatory	STA	station
CPR	copper	LFT	left hand	STD	standard
CPT	carpet (ed) (ing)	LH	live load	STC	seating
CS	countersink (sunk)	LPT	low point	STL	steel
CT	counter	LPT	low point	STOR	storage
CTR	counter flashing	LTL	light	STR	structure (al)
CU FT	cubic foot (feet)	LTL	light	SUS	suspended
CU YD	cubic yard (s)	LVR	lower	SV	spray vinyl
CV	cover	LWC	lightweight concrete	SYS	symmetry (ical)
		LWC	lightweight concrete	SYN	synthetic
		LWC	lightweight concrete	SYS	system
D	depth	M	meter (s)	T & G	tongue & groove
DBL	double	MAP	med gas alarm panel	T	tread (s)
DEMO	demolish, demolition	MAS	masonry	TB	towel bar
DF	depress (ed)	MATL	material	TC	terra cotta
DF	drinking fountain	MAX	maximum	TE	tinted
DIAG	diagonal	MAX	maximum	TEL	telephone
DIAM	diameter	MCH	machine bolt	TEMP	tempered
DIM	dimension (s)	MD	medium	TH	thick (ness)
DW	division	MED	mechanical	THK	thick (ness)
DL	dead load	MED CAB	medicine cabinet	TK BD	tile back board
DN	down	MFD	metal floor decking	TL	tile
DP	dampening	MFR	manufacturer (r)	TL PL	top of plate
DPR	dampener	MH	manhole	TO	top of
DR	door	MHO	magnetic hold open	TOI	tolerance
DS	downspout	MIN	minimum	TOS	top of steel
DSPR	dispenser	MIR	mirror	TOW	top of wall
DTL	detail	MISC	miscellaneous	TP	transparent
DWG	drawing	MLD	molding, moulding	TPN	transparent
DWR	drawer	MLL	millimeter (s)	TPN	transparent
		MMB	membrane	TRSM	transom
E	east	MO	masonry opening	TRM	thermal
EL or ELEV	elevation	MOD	modular	TS	tube steel
ELEC PNL BD	electric panel board	MOV	movable	TTD	top of slab
ELECT	electric (al)	MRB	marble	TTR	treated
ELEV	elevator	MRD	metal roof deck	TV	television
EMERG	emergency	MT	mount (ing)	TY	typical
ENC	enclose (ure)	MTD	mounted	TZ	terrazzo
EPY	epoxy	MTL FUR	metal furring	UC	undercut
EQ	equal	MTL	metal	UNF	unfinished
EST	estimate	MTL THR	metal threshold	UNF	unless noted otherwise
ET	elapsed timer	MULL	mullion	UR	urinal
EW	each way	MWK	millwork		
EWC	electric water cooler	N	nitrogen	V	vacuum
EX	exposed	N	north	VAR	varies, variable
EXH	exhaust	NAT	natural	VB	vapor barrier
EXST or E	existing	NC	nurse call	VCT	vinyl base
EXP JT or E	expansion joint	NIC	not in contract	VERT	vertical
EXT	exterior	NMT	nonmetallic	VIF	verify in field
		NOM	nominal	VIN TL	vinyl tile
FA	fire alarm	NR	noise reduction	VIN	vinyl
FAAP	fire alarm annunciator panel	NRC	noise reduction coefficient	VJ	vertical joint
FAS	fasten (er)	NTS	not to scale	VNR	veneer
FB	face brick			VRM	vermiculite
FBD	furnished by other			VWC	vinyl wall covering
FBD	fiberboard	O	oxygen		
FD	floor drain	OA	overall	W	west
FE	fire extinguisher	OB	obscure	W	width, wide
FC	fixed equipment	OC	on center	W	with
FEC	fire extinguisher cabinet	OD	outside diameter	WO	without
FF	factory finish	OH	opposite hand	WB	wood base
FFE	finished floor elevation	OH	overhead	WC	water closet
FEL	finished floor line	OJ	open-web joist	WD	wood
FGL	fiberglass	OP	opening	WDO	window
FHC	fire hose cabinet	OPG	opening	WH	wall hung
FHMS	flat head machine screw	OPP	opposite	WP	waterproof (ing)
HSS	fire hose station	OR	operating room	WPT	working point
FHWS	flat head wood screw	ORD	overflow roof drain	WR	water resistant
FIN	finish	OS	opposite surface	WR	wire (d)
FLG	flashing	P LAM or PL	plastic laminate	WSCT	wainscot
FLR CO	floor cleanup	PAR	parallel	WTW	wall to wall
FLR	floor (ing)	PB	panic bar	WWM	woven wire mesh
FLT	float	PBD	particle board		
FLUOR	fluorescent			ZVB	zone valve box
FLX	flexible				
FN	fence				

SYMBOL LEGEND



PROJECT DIRECTORY

OWNER
 PARKER ADVENTIST HOSPITAL
 188 INVERNESS DRIVE WEST, SUITE 500
 PARKER CO 80138
 PHONE: 303.267.9158
 FAX: 303.804.8195

CIVIL ENGINEER
 S.A. MIRO, INC.
 4582 S ULSTER ST PKWY, STE 750
 DENVER, CO 80237-2639
 PHONE: 303.741.3737
 FAX: 720.407.1070

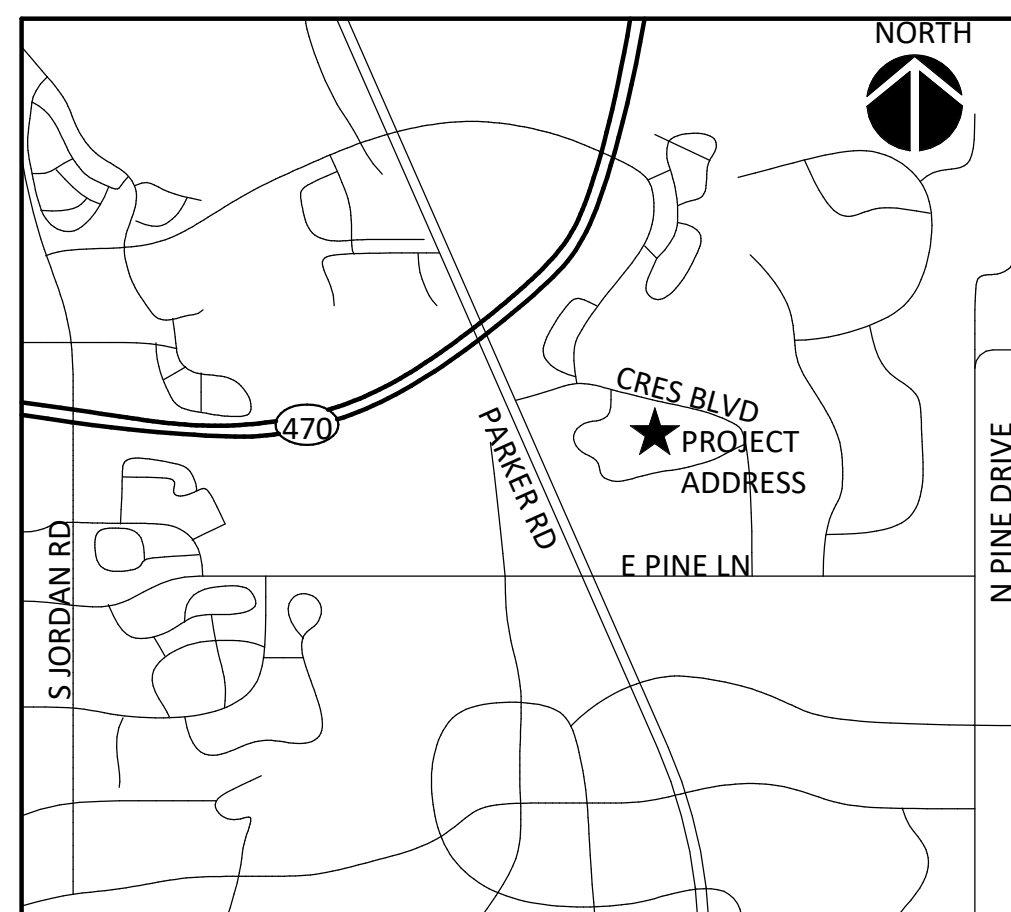
ARCHITECT
 BOULDER ASSOCIATES, INC.
 1426 PEARL STREET, SUITE 300
 BOULDER, CO 80302
 PHONE: 303.499.7795
 FAX: 303.499.7767

CONTRACTOR
 GE JOHNSON CONSTRUCTION CO.
 25 NORTH CASCADE AVENUE, SUITE 400
 COLORADO SPRINGS, CO 80903
 PHONE: 719.473.5321
 FAX: 719.473.5324

SHEET INDEX

2 - ARCHITECTURAL	
1 of 5	COVER SHEET
2 of 5	SITE PLAN
3 of 5	ARCHITECTURAL / LANDSCAPE SITE PLAN
4 of 5	PLAN AND ELEVATIONS
5 of 5	EXISTING CONDITIONS

VICINITY MAP



PROJECT NARRATIVE

PARKER ADVENTIST HOSPITAL IS PROPOSING AN APPROXIMATELY 400 SQUARE FOOT STORAGE SHED FOR THE STORAGE OF SALT FOR SITE MAINTENANCE. THE BUILDING WILL BE CONSTRUCTED OF CONCRETE MASONRY UNIT WALLS WITH STUCCO AND METAL PANEL VENEER THAT WILL MATCH EXISTING HOSPITAL EXTERIOR FINISHES. THE ROOF WILL BE A STANDING SEAM METAL ROOF TO MATCH EXISTING HOSPITAL SLOPED ROOFS.

PROJECT NUMBER
194160.00

DRAWN BY
Author

DATE
12-09-2019

REVISIONS
REV DESCRIPTION DATE



Boulder Associates, Inc.
 Architecture + Interior Design
 1426 Pearl Street, Suite 300
 Boulder, Colorado 80302
 303.499.7795 F 303.499.7767
 www.boulderassociates.com

PROJECT
PARKER ADVENTIST HOSPITAL: SALT SHED

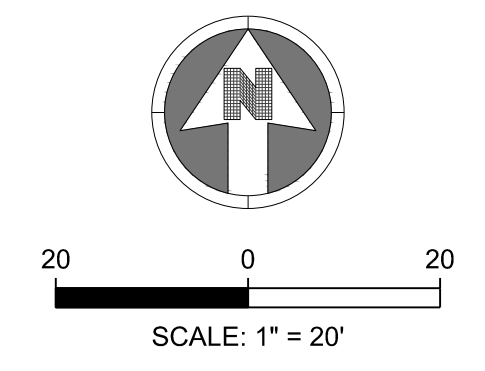
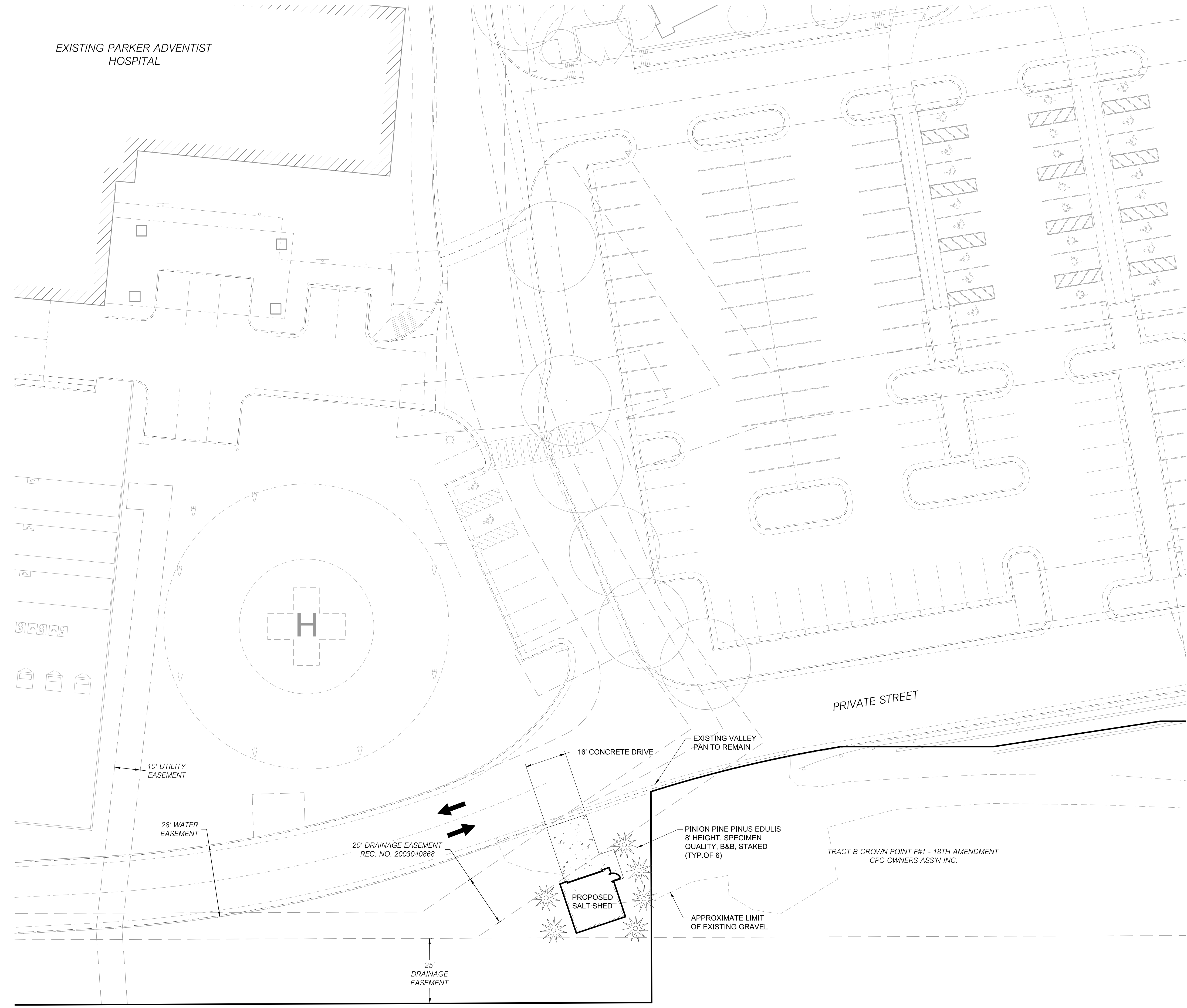
9395 CROWN CREST BLVD.
 PARKER, COLORADO 80138

SITE AMENDMENT

SHEET TITLE
COVER SHEET

SHEET NUMBER

1 of 5



LEGEND:

← TRAFFIC FLOW AREA

PROJECT NUMBER
19130

DRAWN BY
MHV

DATE
11/07/19

REVISIONS
DESCRIPTION DATE

BOULDER ASSOCIATES

ARCHITECTS

Boulder Associates, Inc.
Architecture + Interior Design
1426 Pearl Street, Suite 300
Boulder, Colorado 80302
303.499.7795 F 303.499.7767
www.boulderassociates.com

PROJECT
PARKER ADVENTIST HOSPITAL: SALT SHED

9395 CROWN CREST BLVD.
PARKER, COLORADO 80138

TOWN OF PARKER SIGNATURE

THE PLANS ARE REVIEWED FOR CONCEPT ONLY AND THE REVIEW DOES NOT IMPLY RESPONSIBILITY BY THE REVIEWING DEPARTMENT, THE DESIGNATED TOWN AUTHORITY OR OTHER APPOINTED PERSON, OR THE TOWN OF PARKER FOR ACCURACY AND CORRECTNESS OF CALCULATIONS, ENGINEERING, OR DESIGN. THE REVIEW DOES NOT IMPLY QUANTITIES REQUIRED. THE REVIEW WILL NOT BE CONSTRUED FOR ANY REASON AS ACCEPTANCE OF FINANCIAL RESPONSIBILITY BY THE TOWN OR REVIEWING DEPARTMENTS FOR ANY COSTS, LABOR, OR MATERIAL THAT MAY BE REQUIRED DURING CONSTRUCTION PHASE. REVIEW IS EXCLUSIVELY LIMITED TO TOWN OF PARKER PUBLIC IMPROVEMENTS.

TOWN OF PARKER, PUBLIC WORKS DIRECTOR	DATE
TOWN OF PARKER, DESIGNATED TOWN AUTHORITY	DATE
TOWN OF PARKER, DESIGNATED TOWN AUTHORITY	DATE

PLANNING SHEET

SHEET TITLE
SITE PLAN

SHEET NUMBER

2 of 5

PROJECT NUMBER
194160.00

DRAWN BY
Author

DATE
12-09-2019

REV	DESCRIPTION	DATE
-----	-------------	------

**BOULDER
ASSOCIATES**

ARCHITECTS

Boulder Associates, Inc.
Architecture + Interior Design
1426 Pearl Street, Suite 300
Boulder, Colorado 80302
303.499.7795 F 303.499.7767
www.boulderassociates.com

PROJECT
**PARKER
ADVENTIST
HOSPITAL: SALT
SHED**

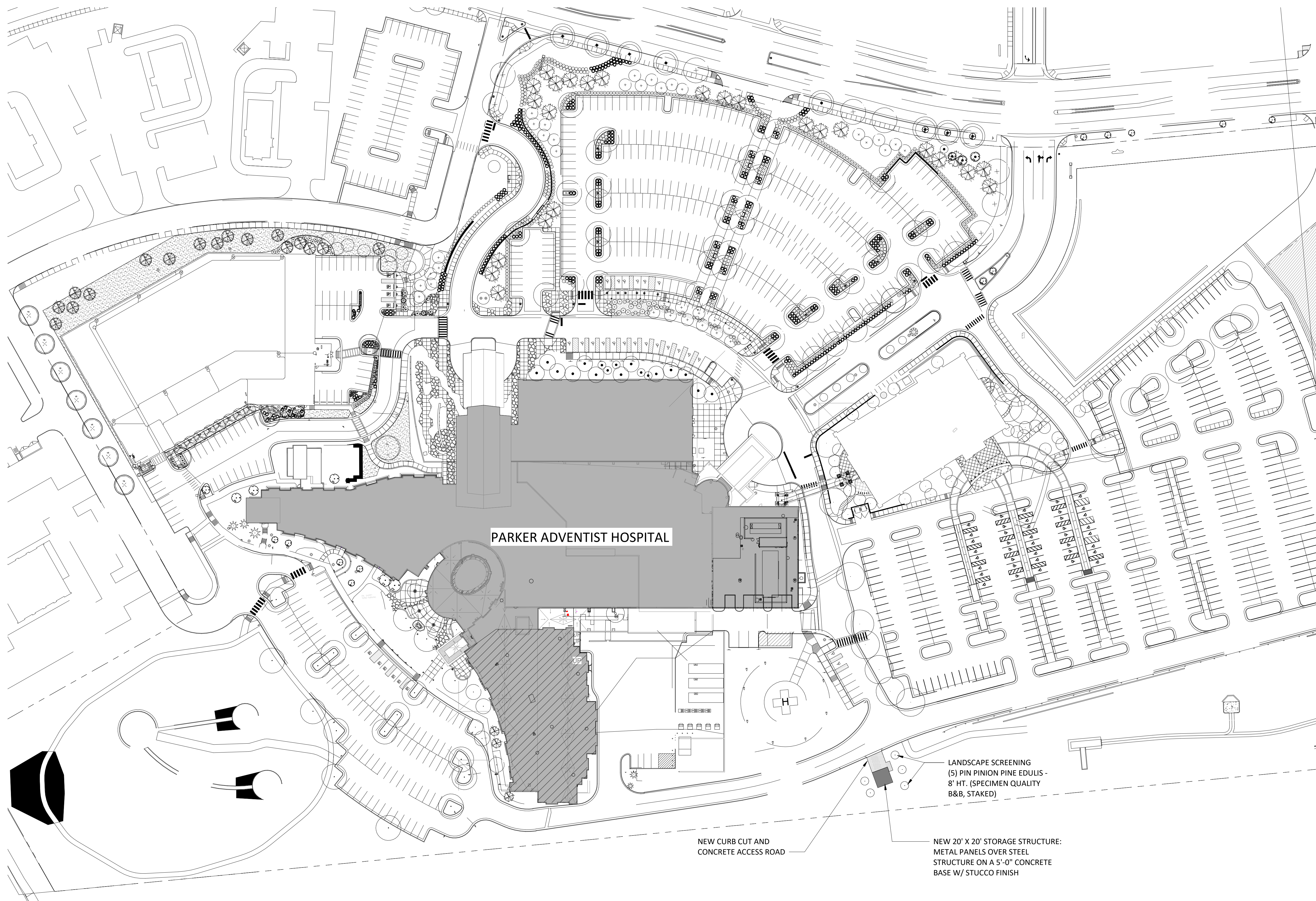
9395 CROWN CREST BLVD.
PARKER, COLORADO 80138

SITE
AMENDMENT

SHEET TITLE
**ARCHITECTURAL /
LANDSCAPE SITE
PLAN**

SHEET NUMBER

3 of 5



PARKER ADVENTIST HOSPITAL

LANDSCAPE SCREENING
(5) PIN PINION PINE EDULIS -
8' HT. (SPECIMEN QUALITY
B&B, STAKED)

NEW CURB CUT AND
CONCRETE ACCESS ROAD

NEW 20' X 20' STORAGE STRUCTURE:
METAL PANELS OVER STEEL
STRUCTURE ON A 5'-0" CONCRETE
BASE W/ STUCCO FINISH

1 OVERALL SITE PLAN - SALT SHED
A3.1 | 3 of 5 | 1" = 60'-0"



REV	DESCRIPTION	DATE
ASI-4	ASI 04	11.03.14



Boulder Associates, Inc.
Architecture + Interior Design
1426 Pearl Street, Suite 300
Boulder, Colorado 80302
303.499.7795 F 303.499.7767
www.boulderassociates.com

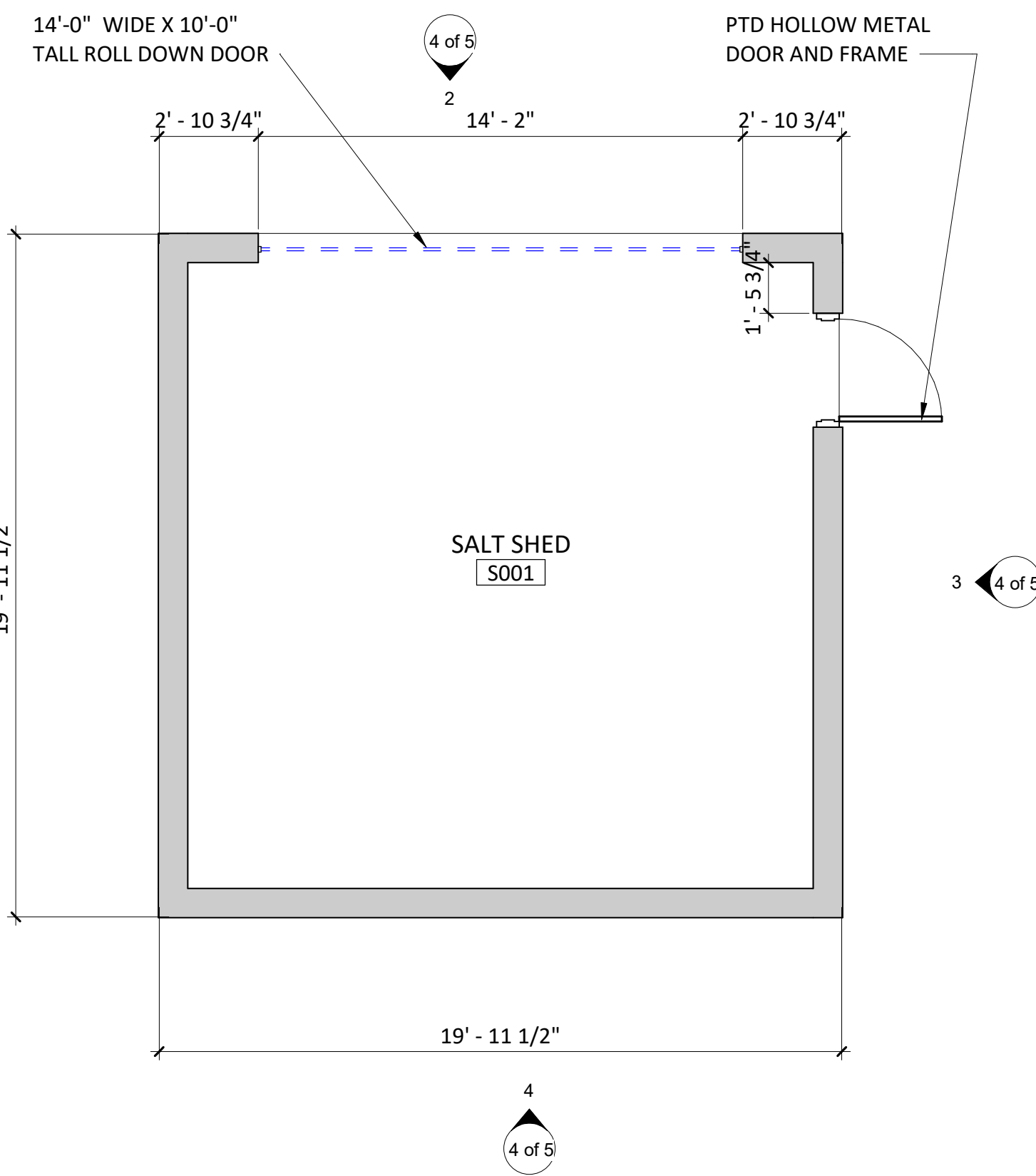
PROJECT
**PARKER
ADVENTIST
HOSPITAL: SALT
SHED**

9395 CROWN CREST BLVD.
PARKER, COLORADO 80138

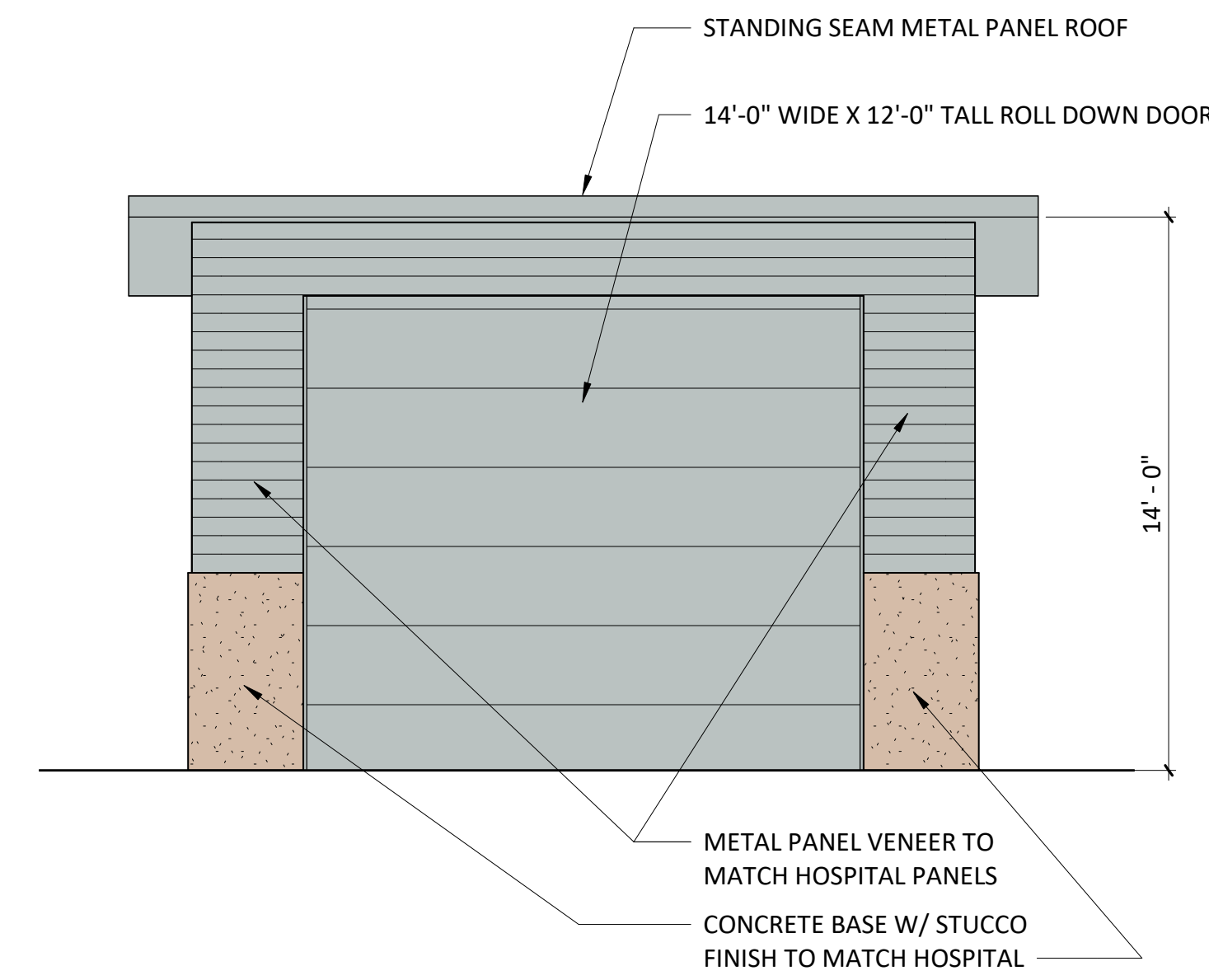
SITE
AMENDMENT

SHEET TITLE
**PLAN AND
ELEVATIONS**

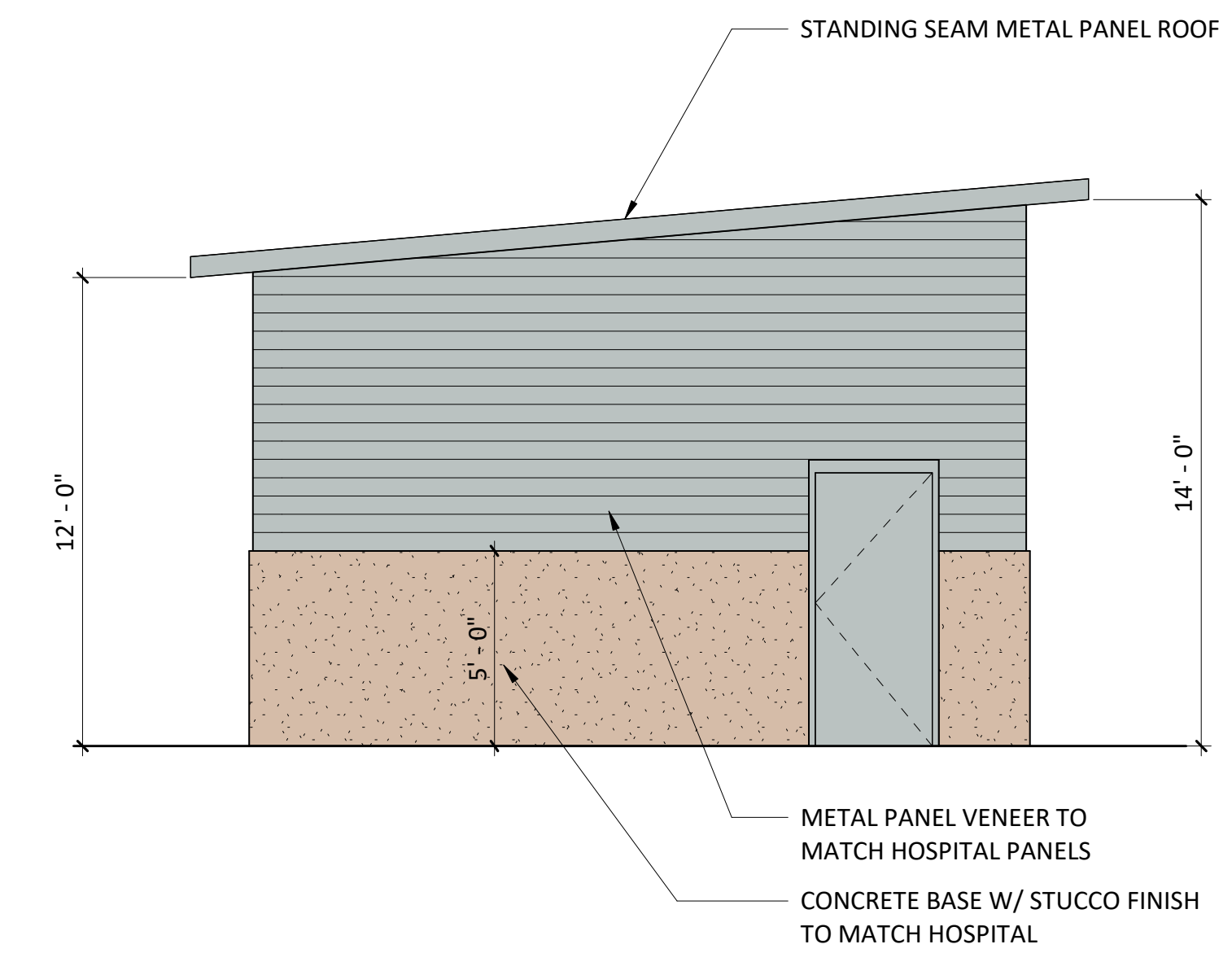
SHEET NUMBER



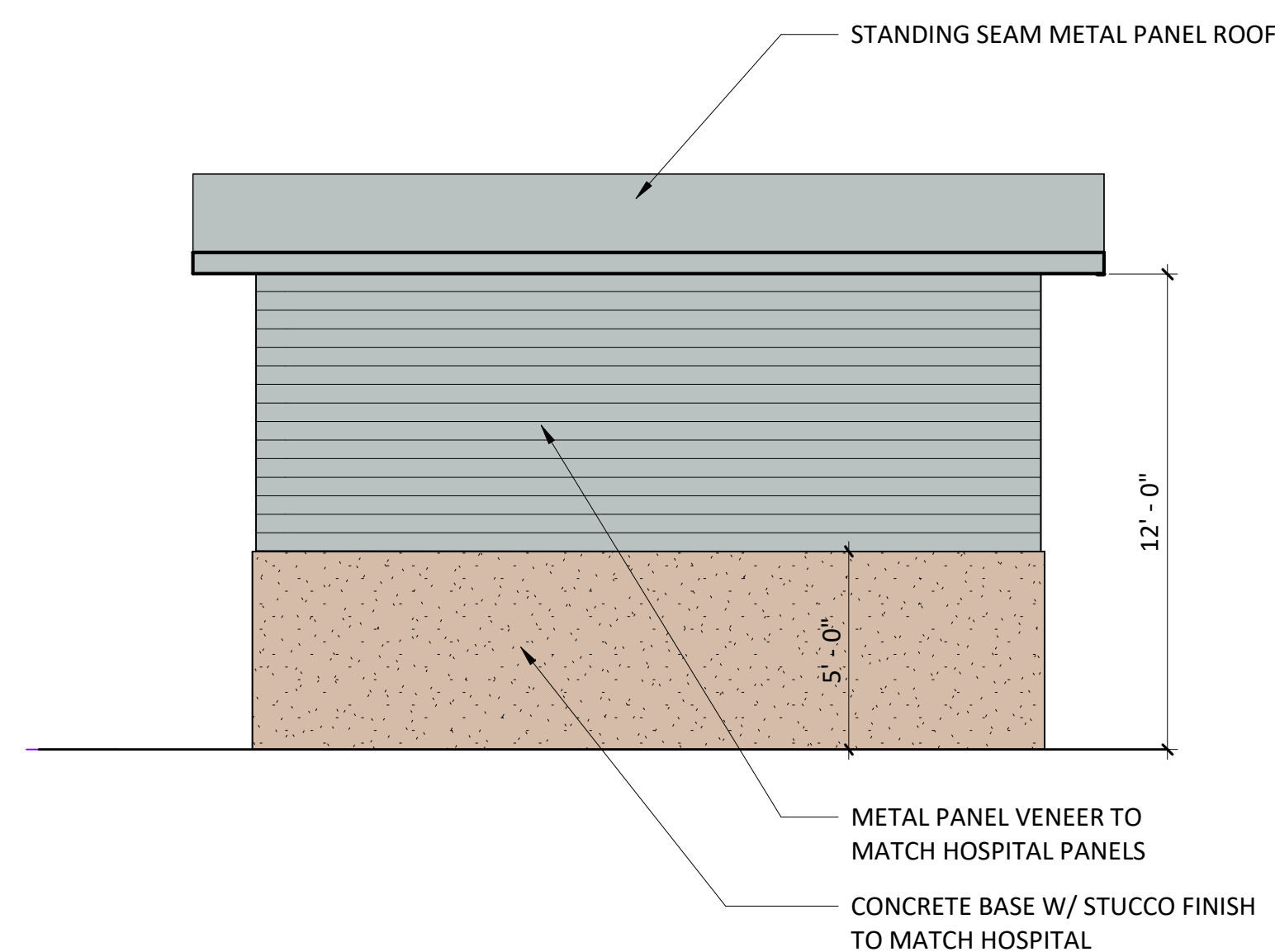
1 SALT SHED FLOOR PLAN
A2.0A | 4 of 5 | 1/4" = 1'-0"



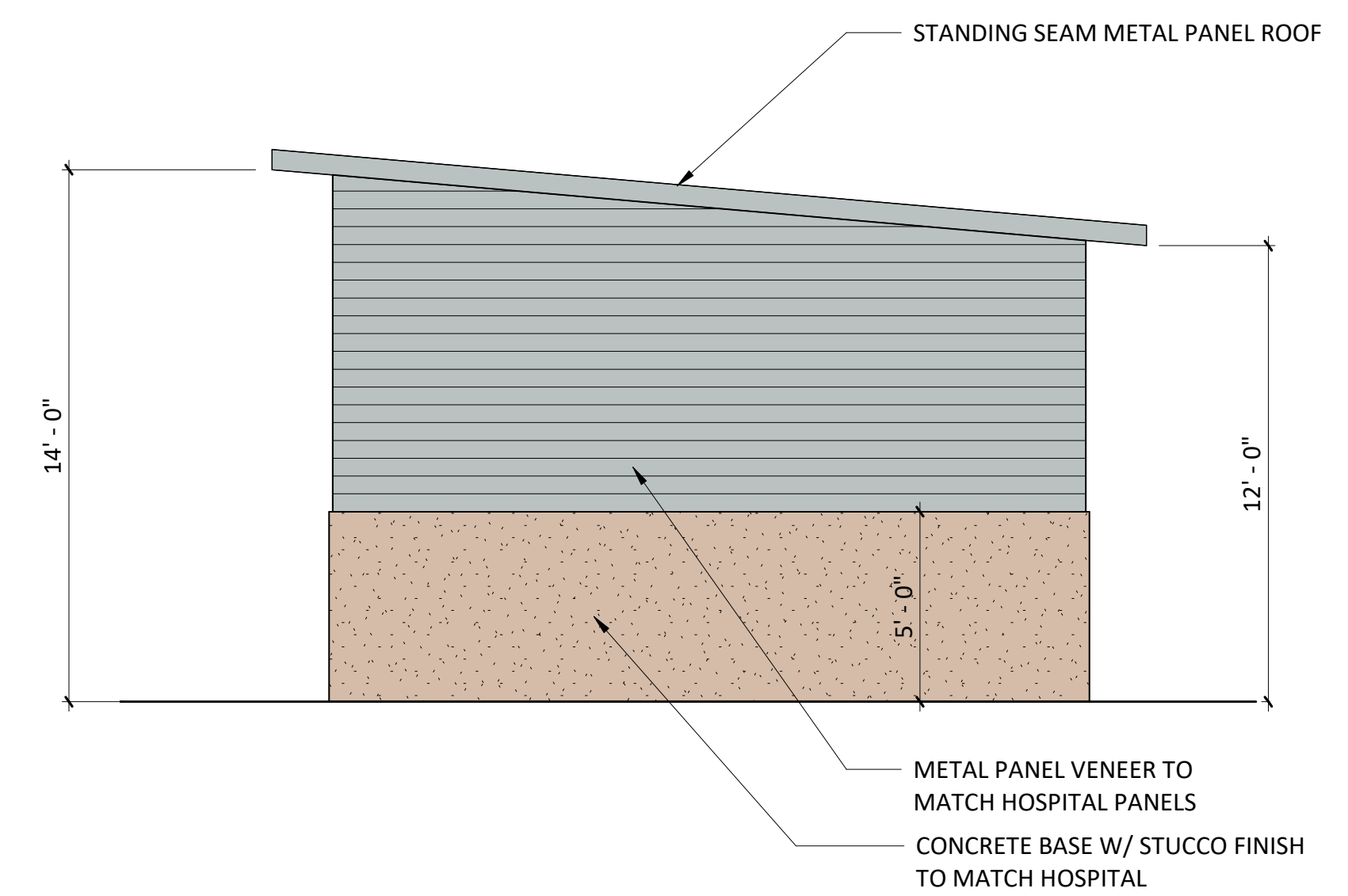
2 SALT SHED - NORTH ELEVATION
4 of 5 | 4 of 5 | 1/4" = 1'-0"



3 SALT SHED - EAST ELEVATION
4 of 5 | 4 of 5 | 1/4" = 1'-0"



4 SALT SHED - SOUTH ELEVATION
4 of 5 | 4 of 5 | 1/4" = 1'-0"



5 SALT SHED - WEST ELEVATION
4 of 5 | 4 of 5 | 1/4" = 1'-0"

PROJECT NUMBER
194160.00

DRAWN BY
Author

DATE
12-09-2019

REVISIONS

REV	DESCRIPTION	DATE
-----	-------------	------



Boulder Associates, Inc.
Architecture + Interior Design
1426 Pearl Street, Suite 300
Boulder, Colorado 80302
303.499.7795 F 303.499.7767
www.boulderassociates.com

PROJECT
**PARKER
ADVENTIST
HOSPITAL: SALT
SHED**

9395 CROWN CREST BLVD.
PARKER, COLORADO 80138

SITE
AMENDMENT

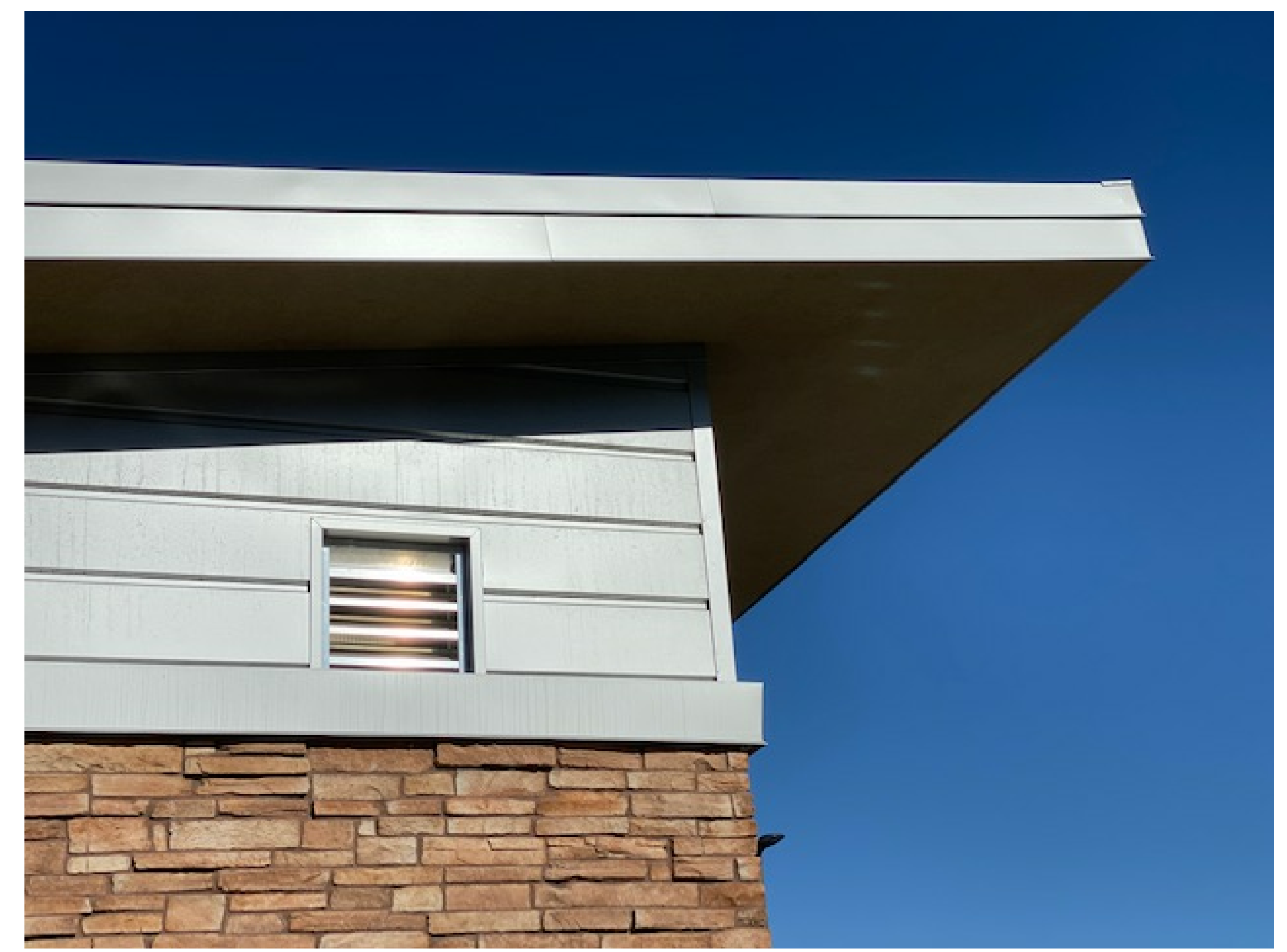
SHEET TITLE
**EXISTING
CONDITIONS**

SHEET NUMBER

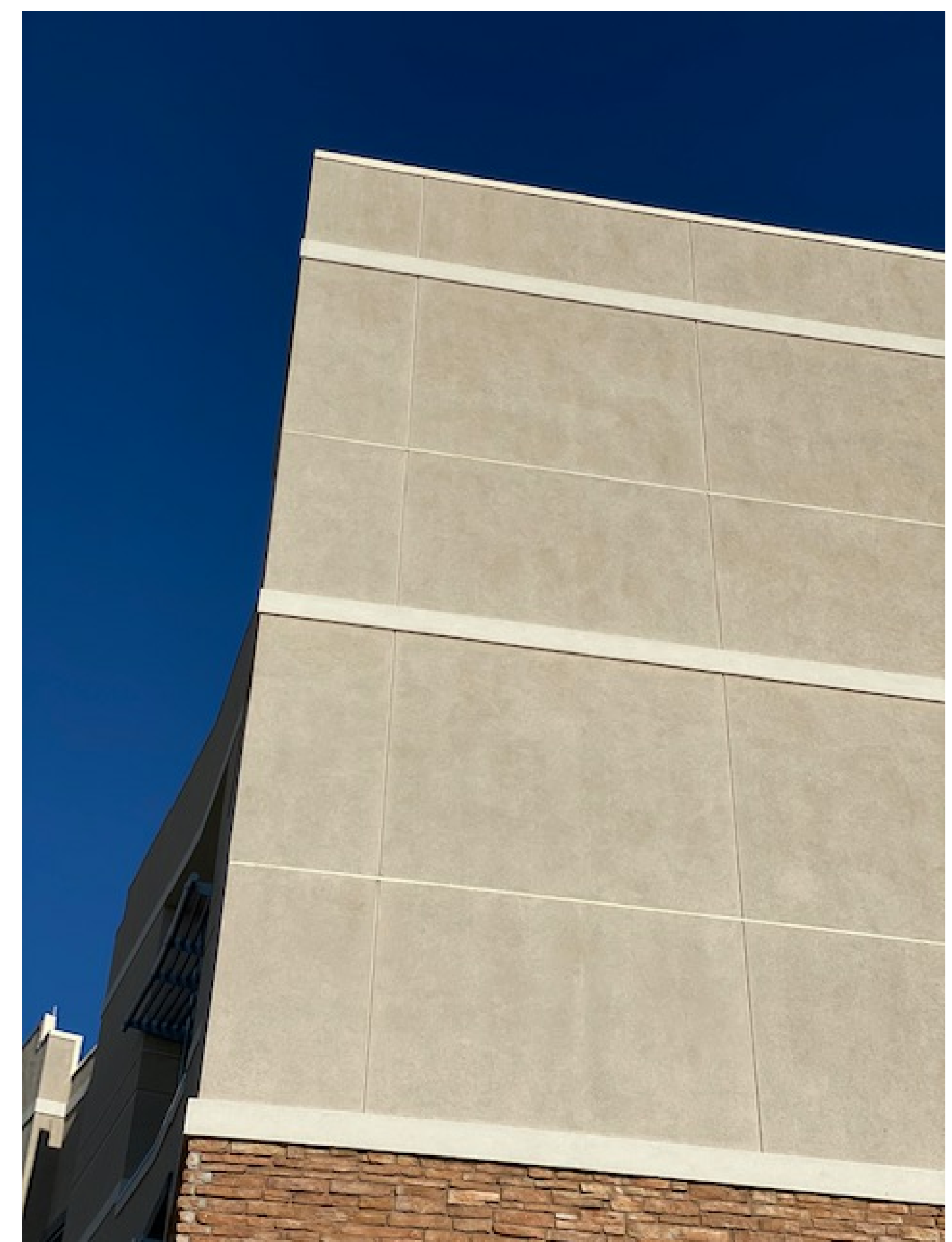
5 of 5



EXISTING SITE LOOKING SOUTH



EXISTING METAL PANEL VENEER AND COPING. SHED TO MATCH.



EXISTING STUCCO. SHED TO MATCH.