

#	DESCRIPTION	DATE
0	INITIAL SUBMITTAL TO TOWN	8/8/18
1	REVISED SUBMITTAL TO TOWN	11/26/18
2	THIRD SUBMITTAL TO TOWN	07/31/19
3	FOURTH SUBMITTAL TO TOWN	9/13/19
4	FIFTH SUBMITTAL TO TOWN	10/30/19
5	SITE PLAN AMENDMENT FIRST SUBMITTAL	12/11/2019



19 SOUTH TEJON ST., SUITE 300
 COLORADO SPRINGS, CO. 80903
 TELE: 719-471-7566
 FAX: 719-471-1174
 www.rtaarchitects.com

PROJECT

**Parker Adventist
 Hospital MOB III**

9403 CROWN CREST BLVD.
 PARKER, COLORADO
 80138

**SITE PLAN
 AMENDMENT**

SHEET TITLE

**BUILDING
 ELEVATIONS**

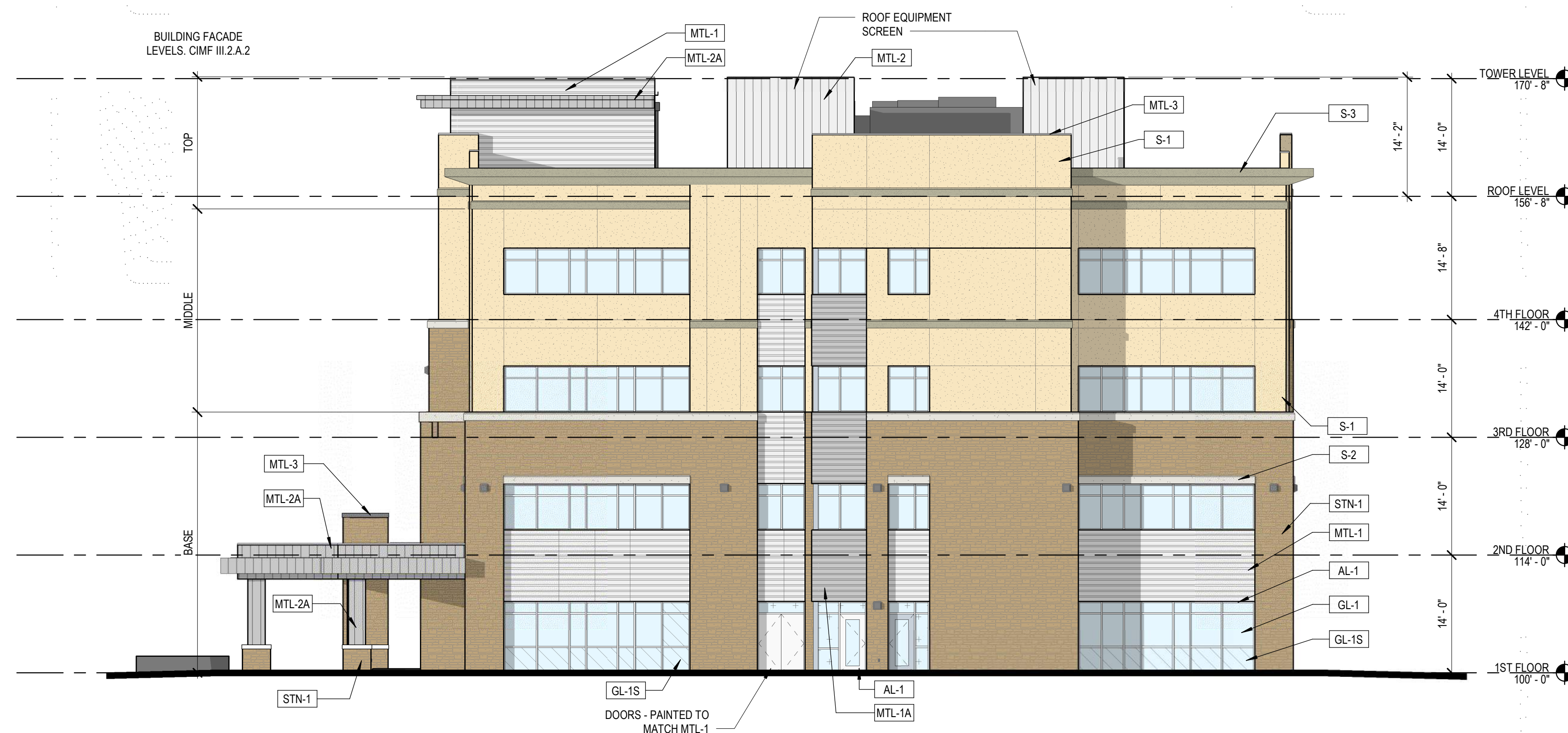
SHEET NUMBER



2 NORTH ELEVATION
 SP-3 3/32" = 1'-0"

EXTERIOR ELEVATION LEGEND

	S-1 STUCCO LARIAT PAREX		GL-1 INSULATED VISION GLASS SOLARBAN 80 OPTIBLUE PPG
	S-2 STUCCO SNOWBALL PAREX		GL-1S INSULATED SPANDEL GLASS AG 43 GRAY (INBOARD) GUARDIAN SUNGUARD
	S-3 STUCCO BASALT PAREX		AL-1 ALUMINUM STOREFRONT CLEAR ANODIZED KAWNEER
	STN-1 STONE CHERRY CREEK LEDGE SUNSET STONE		
	MTL-1 METAL PANEL HS-8 PANEL - CITYSCAPE BERRIDGE		
	MTL-1A METAL PANEL HS-8 PANEL - ZINC GREY BERRIDGE		
	MTL-2 METAL PANEL FW-12 PANEL - CITYSCAPE BERRIDGE		
	MTL-2A METAL PANEL FW-12 - CITYSCAPE BERRIDGE		
	MTL-3 METAL COPING ZINC GREY BERRIDGE		



1 EAST ELEVATION
 SP-3 3/32" = 1'-0"

#	DESCRIPTION	DATE
0	INITIAL SUBMITTAL TO TOWN	8/8/18
1	REVISED SUBMITTAL TO TOWN	11/26/18
2	THIRD SUBMITTAL TO TOWN	07/31/19
3	FOURTH SUBMITTAL TO TOWN	9/13/19
4	FIFTH SUBMITTAL TO TOWN	10/30/19
5	SITE PLAN AMENDMENT FIRST SUBMITTAL	12/11/2019



19 SOUTH TEJON ST., SUITE 300
 COLORADO SPRINGS, CO. 80903
 TELE: 719-471-7566
 FAX: 719-471-1174
 www.rtaarchitects.com

PROJECT

**Parker Adventist
 Hospital MOB III**

9403 CROWN CREST BLVD.
 PARKER, COLORADO
 80138

**SITE PLAN
 AMENDMENT**

SHEET TITLE

**BUILDING
 ELEVATIONS**

SHEET NUMBER

BUILDING FACADE
 LEVELS, CIMF III.2.A.2



2 SOUTH ELEVATION
 3/32" = 1'-0"

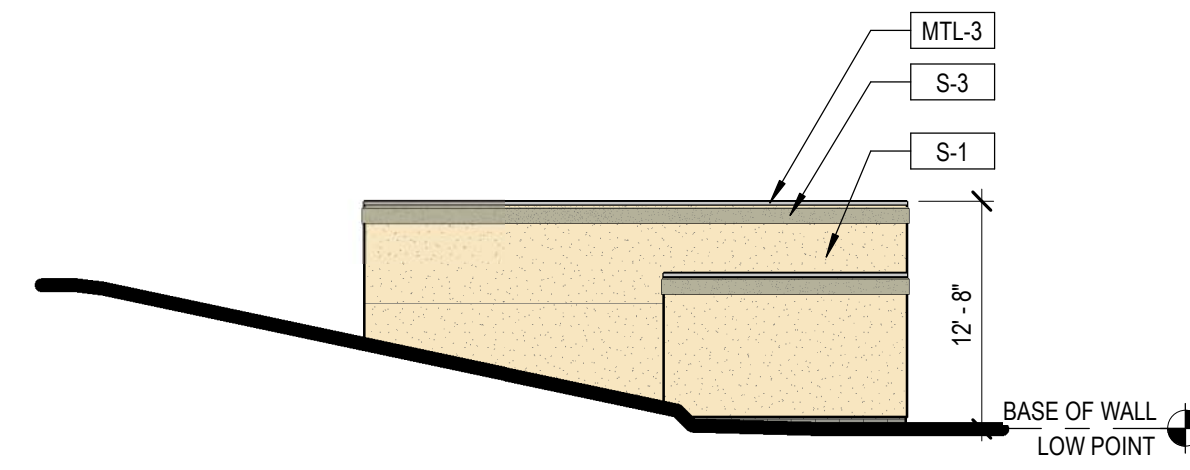
EXTERIOR ELEVATION LEGEND

	S-1 STUCCO LARIAT POREX		GL-1 INSULATED VISION GLASS SOLARBAN 80 OPTIBLUE PPG
	S-2 STUCCO SNOWBALL POREX		GL-1S INSULATED SPANDEL GLASS AG 43 GRAY (INBOARD) GUARDIAN SANGUARD
	S-3 STUCCO BASALT POREX		AL-1 ALUMINUM STOREFRONT CLEAR ANODIZED KAWNEER
	STN-1 STONE CHERRY CREEK LEDGE SUNSET STONE		
	MTL-1 METAL PANEL HS-8 PANEL - CITYSCAPE BERRIDGE		
	MTL-1A METAL PANEL HS-8 PANEL - ZINC GREY BERRIDGE		
	MTL-2 METAL PANEL FW-12 PANEL - CITYSCAPE BERRIDGE		
	MTL-2A METAL PANEL FW-12 - CITYSCAPE BERRIDGE		
	MTL-3 METAL COPING ZINC GREY BERRIDGE		



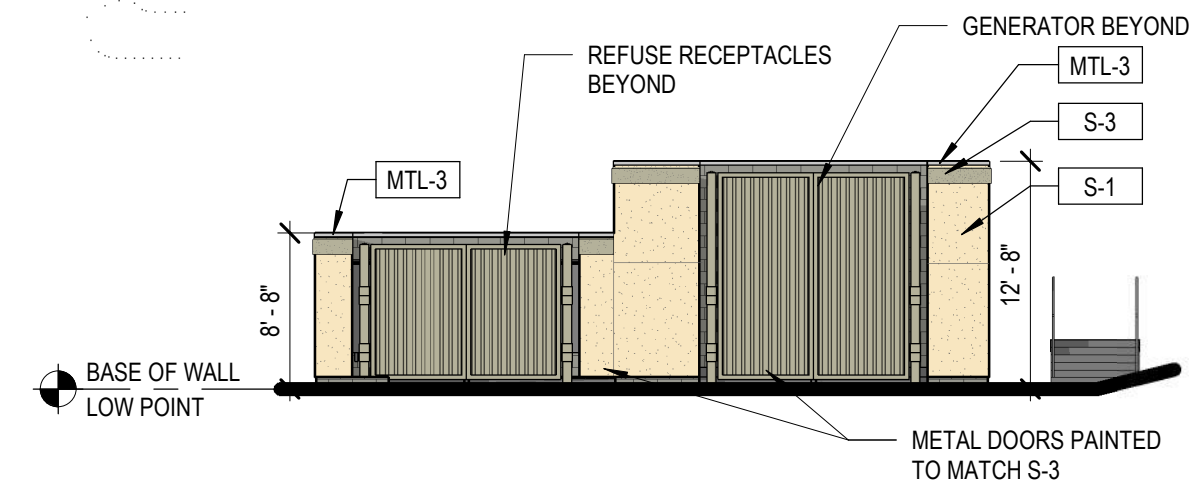
1 WEST ELEVATION
 3/32" = 1'-0"

#	DESCRIPTION	DATE
0	INITIAL SUBMITTAL TO TOWN	8/8/18
1	REVISED SUBMITTAL TO TOWN	11/26/18
2	THIRD SUBMITTAL TO TOWN	07/31/19
3	FOURTH SUBMITTAL TO TOWN	9/13/19
4	FIFTH SUBMITTAL TO TOWN	10/30/19
5	SITE PLAN AMENDMENT FIRST SUBMITTAL	12/11/2019



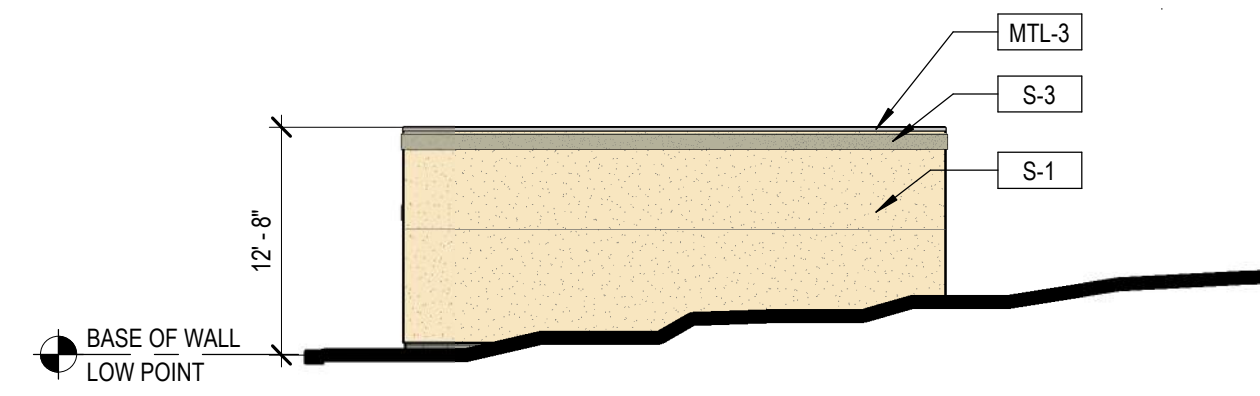
TRASH AND GENERATOR ENCLOSURES - WEST ELEVATION

4
SP-5
3/32" = 1'-0"



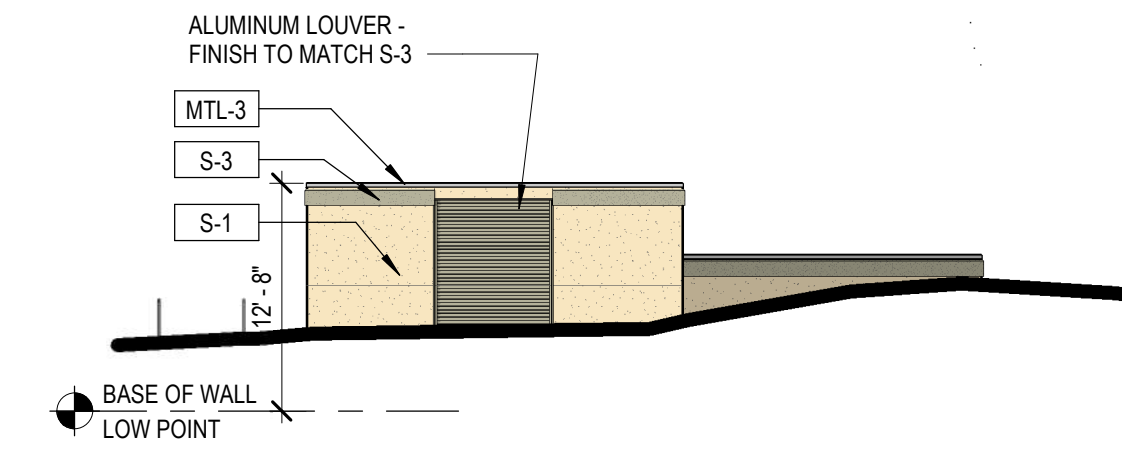
TRASH AND GENERATOR ENCLOSURES - SOUTH ELEVATION

3
SP-5
3/32" = 1'-0"



TRASH AND GENERATOR ENCLOSURES - EAST ELEVATION

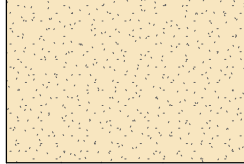
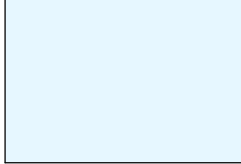


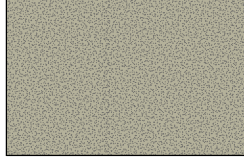

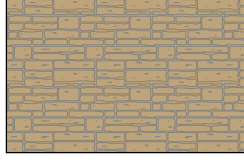
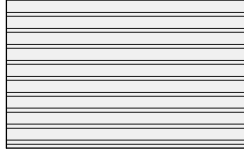
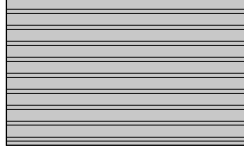
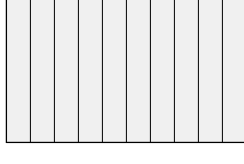
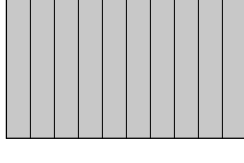

2
SP-5
3/32" = 1'-0"



TRASH AND GENERATOR ENCLOSURES - NORTH ELEVATION

1
SP-5
3/32" = 1'-0"

EXTERIOR ELEVATION LEGEND

	S-1 STUCCO LARIAT PAREX		GL-1 INSULATED VISION GLASS SOLARBAN 80 OPTIBLUE PPG
	S-2 STUCCO SNOWBALL PAREX		GL-1S INSULATED SPANDELL GLASS AG 43 GRAY (INBOARD) GUARDIAN SUNGUARD
	S-3 STUCCO BASALT PAREX		AL-1 ALUMINUM STOREFRONT CLEAR ANODIZED KAWNEER
	STN-1 STONE CHERRY CREEK LEDGE SUNSET STONE		
	MTL-1 METAL PANEL HS-8 PANEL - CITYSCAPE BERRIDGE		
	MTL-1A METAL PANEL HS-8 PANEL - ZINC GREY BERRIDGE		
	MTL-2 METAL PANEL FW-12 PANEL - CITYSCAPE BERRIDGE		
	MTL-2A METAL PANEL FW-12 - CITYSCAPE BERRIDGE		
	MTL-3 METAL COPING ZINC GREY BERRIDGE		

PROJECT

Parker Adventist Hospital MOB III

9403 CROWN CREST BLVD.
PARKER, COLORADO
80138

SITE PLAN AMENDMENT

SHEET TITLE

BRIDGE AND SITE ENCLOSURES ELEVATIONS

SHEET NUMBER



PARKER PROJECT NUMBER

SP18-081

DATE

07/31/2019

REVISIONS

#	DESCRIPTION	DATE
0	INITIAL SUBMITTAL TO TOWN	8/8/18
1	REVISED SUBMITTAL TO TOWN	11/26/18
2	THIRD SUBMITTAL TO TOWN	07/31/19
3	FOURTH SUBMITTAL TO TOWN	9/13/19
4	FIFTH SUBMITTAL TO TOWN	10/30/19
5	SITE PLAN AMENDMENT FIRST SUBMITTAL	12/11/2019



19 SOUTH TEJON ST., SUITE 300
 COLORADO SPRINGS, CO. 80903
 TELE: 719-471-7566
 FAX: 719-471-1174
 www.rtaarchitects.com

PROJECT

**Parker Adventist
 Hospital MOB III**

9403 CROWN CREST BLVD.
 PARKER, COLORADO
 80138

**SITE PLAN
 AMENDMENT**

SHEET TITLE

**BUILDING
 RENDERINGS**

SHEET NUMBER

10 OF 12

2
 SP6

VIEW FROM NORTHWEST



1
 SP6

VIEW FROM SOUTHEAST