

#	DESCRIPTION	DATE
0	INITIAL SUBMITTAL TO TOWN	8/8/18
1	REVISED SUBMITTAL TO TOWN	11/26/18
2	THIRD SUBMITTAL TO TOWN	07/31/19
3	FOURTH SUBMITTAL TO TOWN	9/13/19
4	FIFTH SUBMITTAL TO TOWN	10/30/19
5	SITE PLAN AMENDMENT FIRST SUBMITTAL	12/11/2019



19 SOUTH TEJON ST., SUITE 300  
 COLORADO SPRINGS, CO. 80903  
 TELE: 719-471-7566  
 FAX: 719-471-1174  
 www.rtaarchitects.com

PROJECT

**Parker Adventist  
 Hospital MOB III**

9403 CROWN CREST BLVD.  
 PARKER, COLORADO  
 80138

**SITE PLAN  
 AMENDMENT**

SHEET TITLE

**BUILDING  
 ELEVATIONS**

SHEET NUMBER

**7 OF 12**

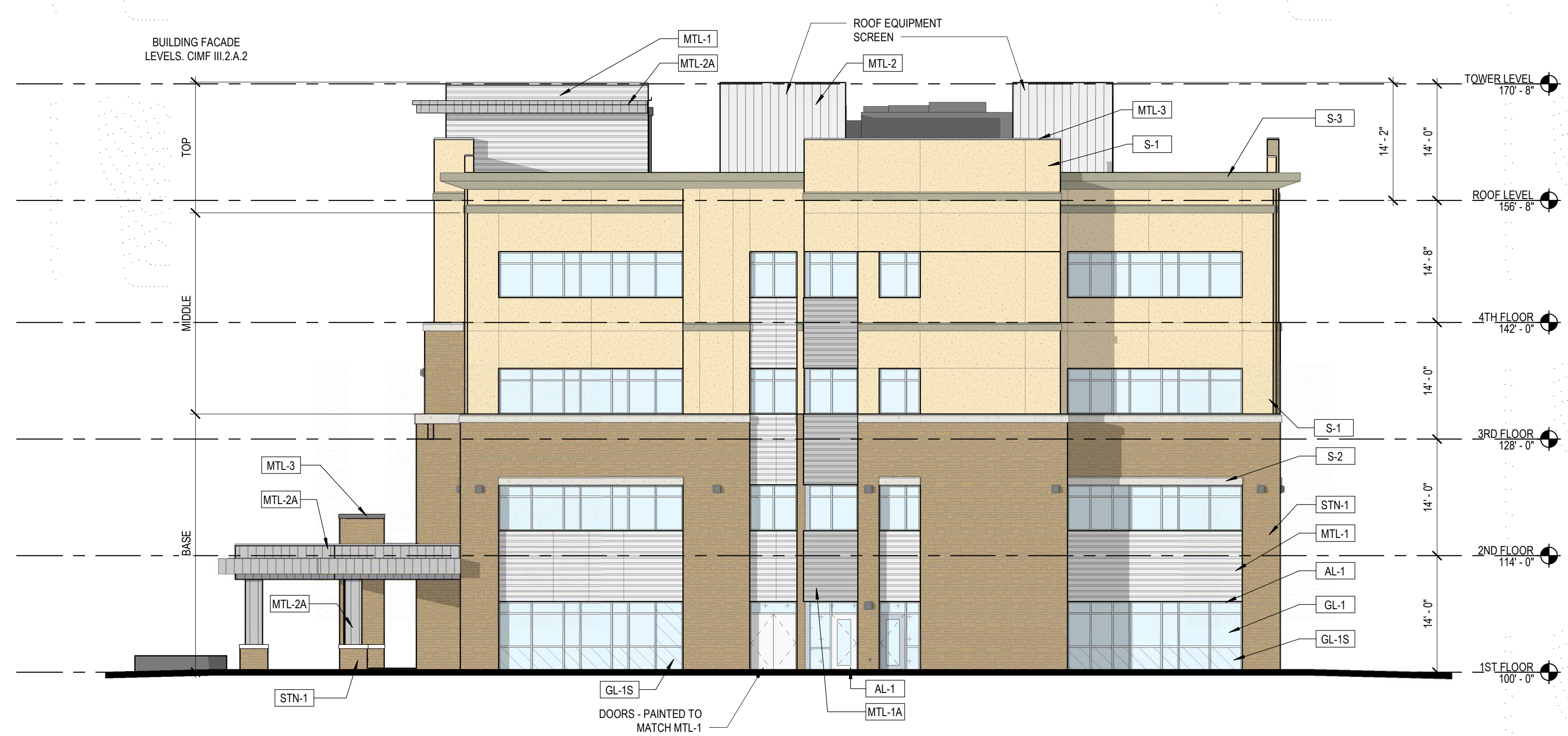


**2 NORTH ELEVATION**  
 3/32" = 1'-0"

**EXTERIOR ELEVATION LEGEND**

	S-1 STUCCO LARIAT POREX		GL-1 INSULATED VISION GLASS SOLARBAN 80 OPTIBLUE PPG
	S-2 STUCCO SNOWBALL POREX		GL-1S INSULATED SPANDELL GLASS AG 43 GRAY (INBOARD) GUARDIAN SINGUARD
	S-3 STUCCO BASALT POREX		AL-1 ALUMINUM STOREFRONT CLEAR ANODIZED KAWNEER
	STN-1 STONE CHERRY CREEK LEDGE SUNSET STONE		
	MTL-1 METAL PANEL HS-8 PANEL - CITYSCAPE BERRIDGE		
	MTL-1A METAL PANEL HS-8 PANEL - ZINC GREY BERRIDGE		
	MTL-2 METAL PANEL FW-12 PANEL - CITYSCAPE BERRIDGE		
	MTL-2A METAL PANEL FW-12 - CITYSCAPE BERRIDGE		
	MTL-3 METAL COPING ZINC GREY BERRIDGE		

**PARKER COLORADO**  
 Final Document  
 Subject to Conditions in Approval Letter  
 Approved Date: 12/27/2019  
 P.Workman



**1 EAST ELEVATION**  
 3/32" = 1'-0"

#	DESCRIPTION	DATE
0	INITIAL SUBMITTAL TO TOWN	8/8/18
1	REVISED SUBMITTAL TO TOWN	11/26/18
2	THIRD SUBMITTAL TO TOWN	07/31/19
3	FOURTH SUBMITTAL TO TOWN	9/13/19
4	FIFTH SUBMITTAL TO TOWN	10/30/19
5	SITE PLAN AMENDMENT FIRST SUBMITTAL	12/11/2019



19 SOUTH TEJON ST., SUITE 300  
 COLORADO SPRINGS, CO. 80903  
 TELE: 719-471-7566  
 FAX: 719-471-1174  
 www.rtaarchitects.com

PROJECT

Parker Adventist Hospital MOB III

9403 CROWN CREST BLVD. PARKER, COLORADO 80138

### SITE PLAN AMENDMENT

SHEET TITLE

**BUILDING ELEVATIONS**

SHEET NUMBER

BUILDING FACADE LEVELS, CIMF III.2.A.2



2 SOUTH ELEVATION  
 SP-4 3/32" = 1'-0"

### EXTERIOR ELEVATION LEGEND

	S-1 STUCCO LARIAT POREX		GL-1 INSULATED VISION GLASS SOLARBAN 80 OPTIBLUE PPG
	S-2 STUCCO SNOWBALL POREX		GL-1S INSULATED SPANDELL GLASS AG 43 GRAY (INBOARD) GUARDIAN SINGUARD
	S-3 STUCCO BASALT POREX		AL-1 ALUMINUM STOREFRONT CLEAR ANODIZED KAWNEER
	STN-1 STONE CHERRY CREEK LEDGE SUNSET STONE		
	MTL-1 METAL PANEL HS-8 PANEL - CITYSCAPE BERRIDGE		
	MTL-1A METAL PANEL HS-8 PANEL - ZINC GREY BERRIDGE		
	MTL-2 METAL PANEL FW-12 PANEL - CITYSCAPE BERRIDGE		
	MTL-2A METAL PANEL FW-12 - CITYSCAPE BERRIDGE		
	MTL-3 METAL COPING ZINC GREY BERRIDGE		

**PARKER**  
 COLORADO

Final Document  
 Subject to Conditions in Approval Letter

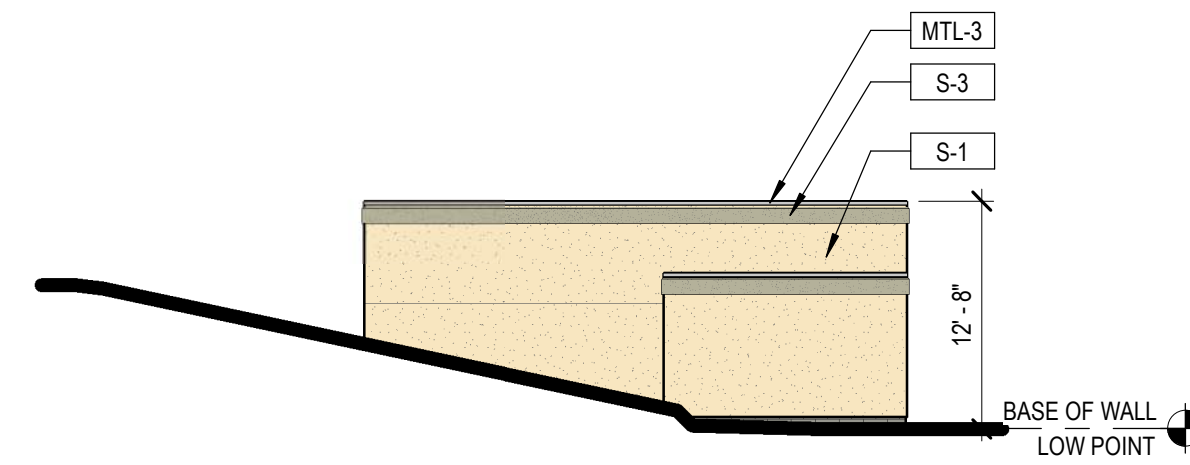
Approved Date: 12/27/2019  
 P.Workman

BUILDING FACADE LEVELS, CIMF III.2.A.2



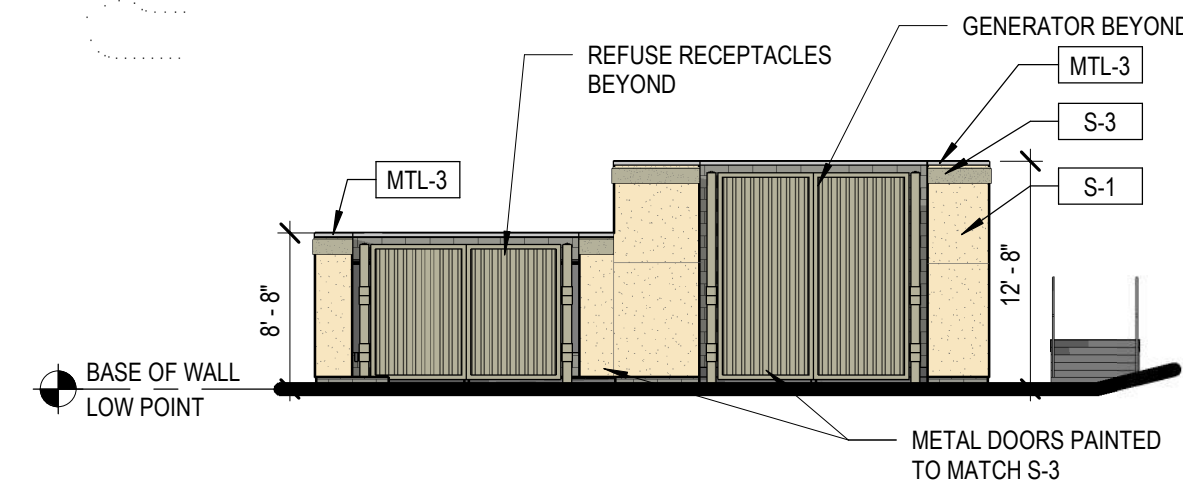
1 WEST ELEVATION  
 SP-4 3/32" = 1'-0"

#	DESCRIPTION	DATE
0	INITIAL SUBMITTAL TO TOWN	8/8/18
1	REVISED SUBMITTAL TO TOWN	11/26/18
2	THIRD SUBMITTAL TO TOWN	07/31/19
3	FOURTH SUBMITTAL TO TOWN	9/13/19
4	FIFTH SUBMITTAL TO TOWN	10/30/19
5	SITE PLAN AMENDMENT FIRST SUBMITTAL	12/11/2019



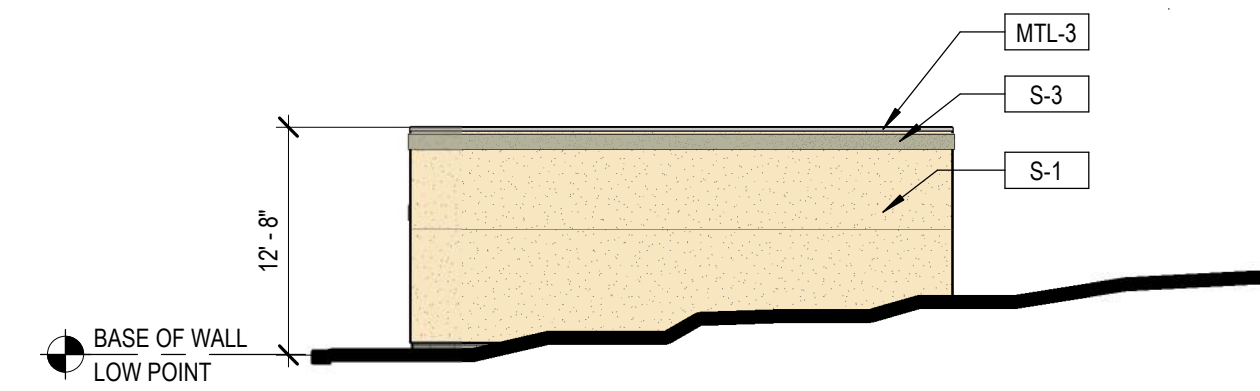
**TRASH AND GENERATOR ENCLOSURES - WEST ELEVATION**

4  
SP-5  
3/32" = 1'-0"



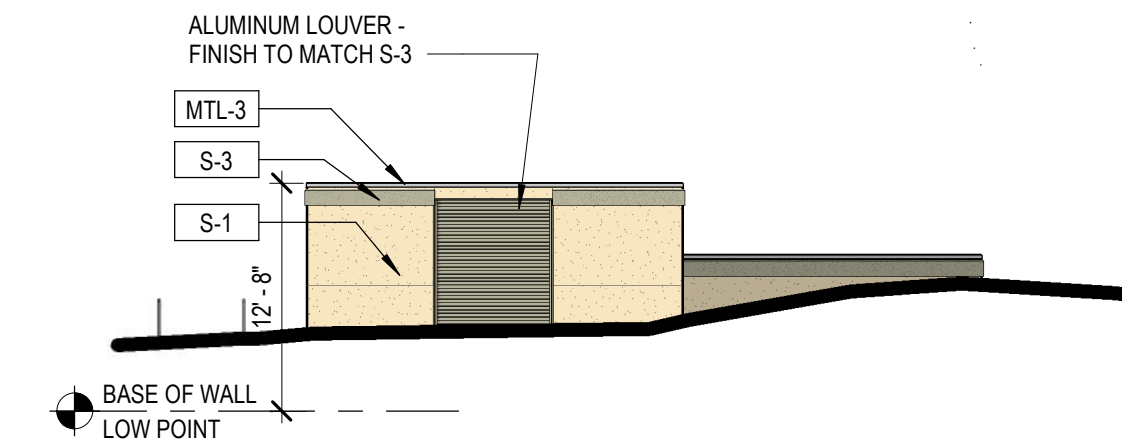
**TRASH AND GENERATOR ENCLOSURES - SOUTH ELEVATION**

3  
SP-5  
3/32" = 1'-0"



**TRASH AND GENERATOR ENCLOSURES - EAST ELEVATION**

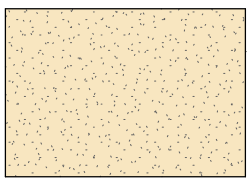
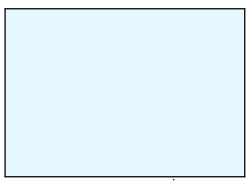

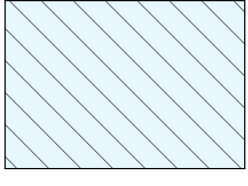
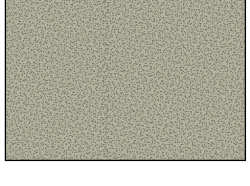

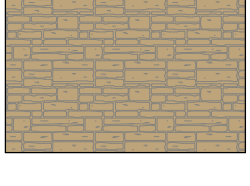
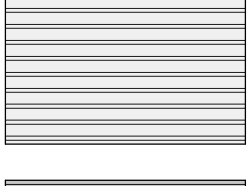
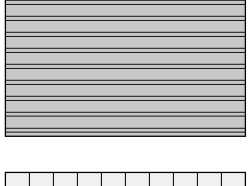
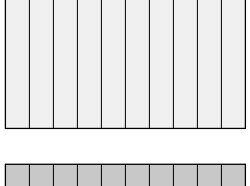
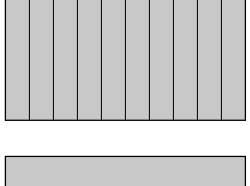

2  
SP-5  
3/32" = 1'-0"



**TRASH AND GENERATOR ENCLOSURES - NORTH ELEVATION**

1  
SP-5  
3/32" = 1'-0"

**EXTERIOR ELEVATION LEGEND**

	<b>S-1</b> STUCCO LARIAT PAREX		<b>GL-1</b> INSULATED VISION GLASS SOLARBAN 80 OPTIBLUE PPG
	<b>S-2</b> STUCCO SNOWBALL PAREX		<b>GL-1S</b> INSULATED SPANDELL GLASS AG 43 GRAY (INBOARD) GUARDIAN SUNGUARD
	<b>S-3</b> STUCCO BASALT PAREX		<b>AL-1</b> ALUMINUM STOREFRONT CLEAR ANODIZED KAWNEER
	<b>STN-1</b> STONE CHERRY CREEK LEDGE SUNSET STONE		
	<b>MTL-1</b> METAL PANEL HS-8 PANEL - CITYSCAPE BERRIDGE		
	<b>MTL-1A</b> METAL PANEL HS-8 PANEL - ZINC GREY BERRIDGE		
	<b>MTL-2</b> METAL PANEL FW-12 PANEL - CITYSCAPE BERRIDGE		
	<b>MTL-2A</b> METAL PANEL FW-12 - CITYSCAPE BERRIDGE		
	<b>MTL-3</b> METAL COPING ZINC GREY BERRIDGE		



Final Document  
Subject to Conditions in Approval Letter

Approved Date: 12/27/2019  
P.Workman



19 SOUTH TEJON ST., SUITE 300  
COLORADO SPRINGS, CO. 80903  
TELE: 719-471-7566  
FAX: 719-471-1174  
www.rtaarchitects.com

PROJECT

**Parker Adventist Hospital MOB III**

9403 CROWN CREST BLVD.  
PARKER, COLORADO  
80138

**SITE PLAN AMENDMENT**

SHEET TITLE

**BRIDGE AND SITE ENCLOSURES ELEVATIONS**

SHEET NUMBER

10 OF 12



2  
SP6 VIEW FROM NORTHWEST



1  
SP6 VIEW FROM SOUTHEAST

PARKER PROJECT NUMBER

**SP18-081**

DATE

**07/31/2019**

REVISIONS

#	DESCRIPTION	DATE
0	INITIAL SUBMITTAL TO TOWN	8/8/18
1	REVISED SUBMITTAL TO TOWN	11/26/18
2	THIRD SUBMITTAL TO TOWN	07/31/19
3	FOURTH SUBMITTAL TO TOWN	9/13/19
4	FIFTH SUBMITTAL TO TOWN	10/30/19
5	SITE PLAN AMENDMENT FIRST SUBMITTAL	12/11/2019




19 SOUTH TEJON ST., SUITE 300  
 COLORADO SPRINGS, CO. 80903  
 TELE: 719-471-7566  
 FAX: 719-471-1174  
 www.rtaarchitects.com

PROJECT

**Parker Adventist  
 Hospital MOB III**

9403 CROWN CREST BLVD.  
 PARKER, COLORADO  
 80138



**Final Document**  
 Subject to Conditions in Approval Letter

Approved Date: 12/27/2019  
 P.Workman

**SITE PLAN  
 AMENDMENT**

SHEET TITLE

**BUILDING  
 RENDERINGS**

SHEET NUMBER

**10 OF 12**