

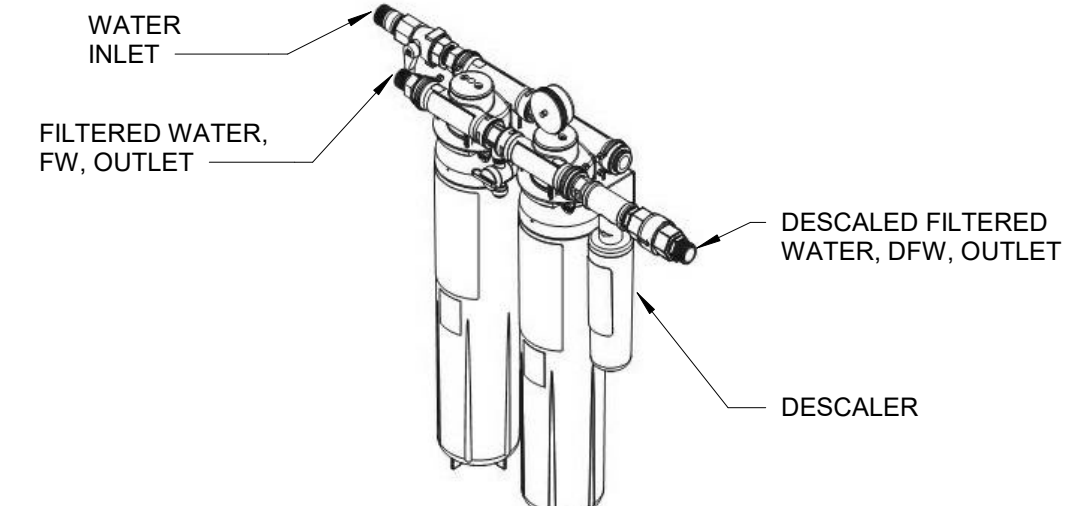


**KEYNOTES**

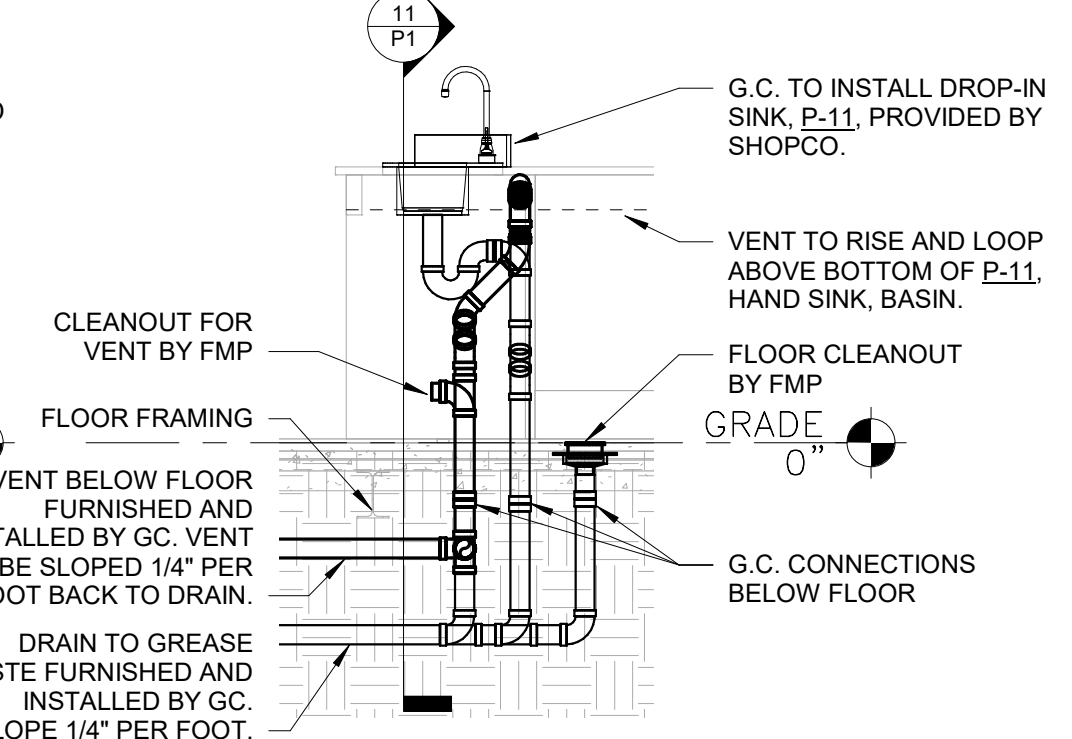
NO.	DESCRIPTION
1	G.C. CONNECTION TO SANITARY SEWER UNDER FLOOR. G.C. CONNECTION SHALL BE AT VERTICAL PIPE WHERE FIXTURE DRAIN, PROVIDED BY FMS, PENETRATES FLOOR.
2	G.C. CONNECTION TO GREASE INTERCEPTOR VENT. REFER TO CIVIL DRAWINGS FOR CONTINUATION.
3	GREASE INTERCEPTOR. REFER TO CIVIL UTILITY DRAWING FOR EXACT LOCATION.
4	1-1/2" INCOMING WATER LINE. REFER TO DETAIL 7/P1.
5	2" DRAIN MANIFOLD FOR BEVERAGE STATION. PROVIDE 2" AIR GAP FOR ALL EQUIPMENT DISCHARGE TO MANIFOLD. RECEPTORS SHALL BE 6" TO 2" PVC REDUCER. MANIFOLD SHALL DISCHARGE TO P-4 THROUGH 2" AIR GAP. G.C. RESPONSIBLE FOR FIELD CONNECTION AT MODULE LINE. REFER TO DETAIL 3/P2.
6	FMS TO ROUTE INSULATED 1/2" CW, HW, HWR, AND DFW PIPING DOWN IN WALL THROUGH SLAB, THEN HORIZONTAL UNDER FLOOR THROUGH STEEL.
7	FMS TO STUB UP INSULATED 1/2" HW, HW, HWR, AND DFW PIPING THRU FLOOR AND CAP ABOVE FLOOR FOR CONNECTION BY G.C.
8	G.C. SHALL EXTEND 1/2" CW & HW TO MIXING VALVE WITHIN MILLWORK. INSTALL MIXING VALVE IN ACCESSIBLE LOCATION WITHIN MILLWORK.
9	G.C. SHALL EXTEND 1/2" HWR WITHIN MILLWORK AND CONNECT TO 1/2" HW UPSTREAM OF MIXING VALVE, WITHIN 12" OF MIXING VALVE.
10	G.C. SHALL ROUTE 1/2" CW & TW FROM MIXING VALVE TO HANDSINK, P-11.
11	G.C. SHALL EXTEND 1/2" DFW FOR COFFEE MACHINES IN MILLWORK. PROVIDE (2X) 3/8" STUBS WITH 1/4" TURN BALL VALVES.
12	ISLAND VENT FOR HANDSINK, P-11. REFER TO DETAIL 11/P1 AND 12/P1. G.C. CONNECTION FOR P-11 HANDSINK DRAIN AND VENT SHALL BE AT VERTICAL PIPE WHERE FIXTURE DRAIN AND VENT, PROVIDED BY FMS, PENETRATES FLOOR.
13	FMS SHALL PROVIDE 6"x6" ACCESS PANEL FOR MIXING VALVES AND HOSE BIBBS.
14	INSTALL FILTERED WATER STUBS FOR ICE MACHINES AT 72" AFF.
15	INSTALL FILTERED WATER STUBS FOR ICEE MACHINES AT 21" AFF.
16	INSTALL FILTERED WATER STUBS FOR BOOSTER PUMPS AT 96" AFF.
17	REFER TO DETAIL 9/P1 FOR WATER FILTER INSTALLATION.
18	REFER TO DETAIL 3/P1 FOR 3-COMPARTMENT SINK INDIRECT WASTE PIPING INSTALLATION.
19	ROUTE 1" CONDENSATE FROM RTU'S DOWN THRU ROOF INTO WALL. CONDENSATE SHALL STUB THRU WALL AND DISCHARGE TO MOP SINK, P-7, THROUGH AIR GAP.
20	REFER TO DETAIL 10/P1 FOR EVAPORATOR MOUNTING.
21	REFER TO DETAIL 4/P1 FOR CONDENSATE PIPING INSTALLATION.
22	2" PVC CHASE FOR CO2 BY FMS TO STUB OUT OF BASE FRAME SO THAT CO2 VENDOR CAN MAKE FINAL CONNECTION.
23	FMS TO STUB UP 2" PVC FOR CO2 2" AFF.
24	FMS TO STUB UP 2" PVC IN CO2 CLOSET SO THAT THE PVC CAN BE TRIMMED BACK BY G.C. AFTER THE CONCRETE PAD IS SET.
25	UNDER FLOOR VENTILATION INTAKE. REFER TO DETAIL 5/P1.
26	UNDER FLOOR VENTILATION EXHAUST. REFER TO DETAIL 6/P1. MAINTAIN 10" SPACING BETWEEN CENTERLINES OF HOLES. REFER TO DETAIL G/P2.
27	G.C. SHALL INSTALL 6" PVC CHASE FOR SANDWICH MERCHANDISER REFRIGERATION LINES. INSTALL REFRIGERATION LINES, AND MAKE CONNECTIONS TO CONDENSER AND SANDWICH MERCHANDISER. PVC SHALL STUB UP THRU 10"x10" BLOCK-OUT.
28	G.C. CONNECTION TO GREASE WASTE UNDER FLOOR. G.C. CONNECTION SHALL BE AT VERTICAL PIPE WHERE FIXTURE DRAIN, PROVIDED BY FMS, PENETRATES FLOOR.
29	TO SANITARY SEWER ON SITE. REFER TO CIVIL UTILITY PLAN FOR CONTINUATION.
30	TO GREASE INTERCEPTOR ON SITE. REFER TO CIVIL UTILITY PLAN FOR CONTINUATION.
31	G.C. CONNECTION TO SANITARY SEWER. REFER TO DETAIL 2/P1.
32	G.C. CONNECTION TO SANITARY SEWER. REFER TO DETAIL 8/P1.
33	G.C. CONNECTION TO VENT STUB BELOW FLOOR PROVIDED BY FMS.

**GENERAL NOTES:**

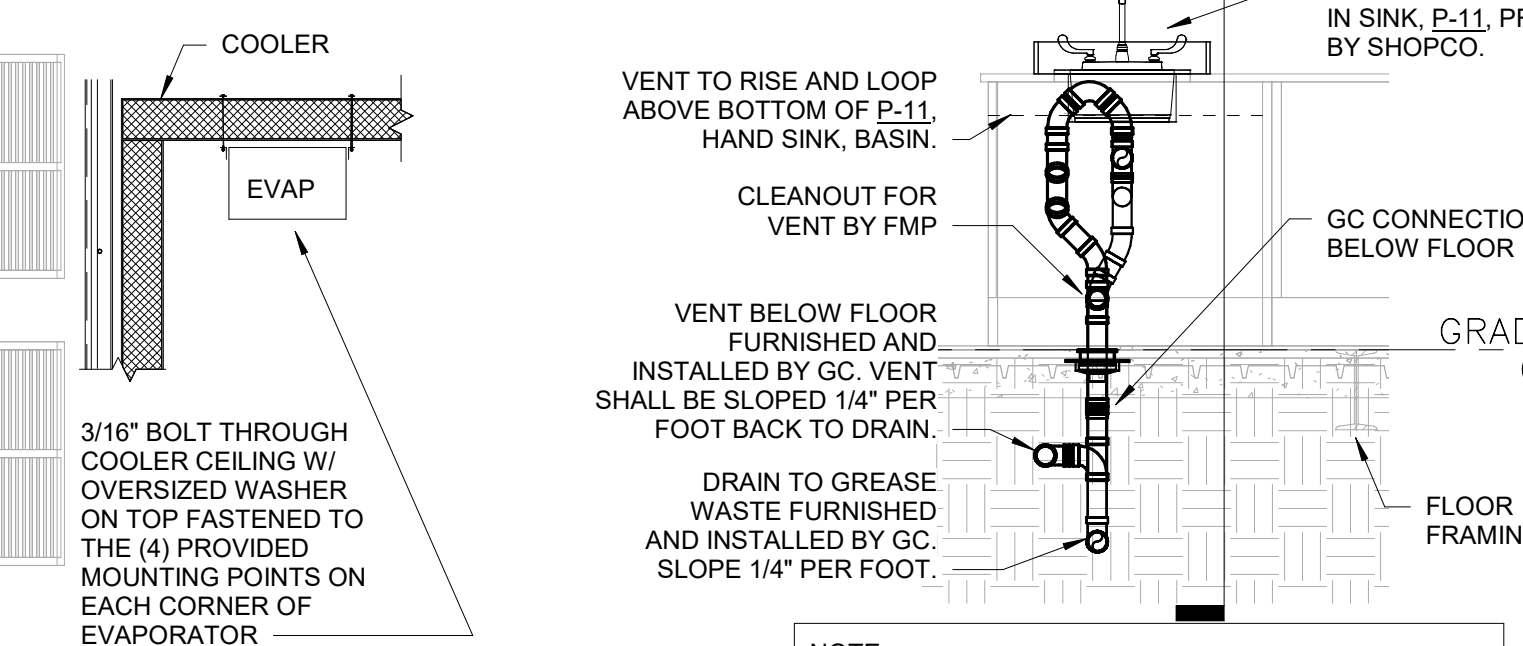
- ALL PLUMBING TO BE IN ACCORDANCE WITH THE APPLICABLE PLUMBING CODE.
- WATER LINES TO BE CPVC.
- ALL WASTE LINE PLUMBING TO BE TYPE DWV SCH 40 PVC.
- ALL VENTS THRU ROOF SHALL BE A MINIMUM OF 3" TO PREVENT FROST CLOSURE. 12" BELOW ROOF TO 12" ABOVE ROOF. (UNO)
- ALL FIELD WORK BY G.C.
- ALL VENTS ARE 2" UNLESS NOTED OTHERWISE.
- ALL DWV UNDER UTILITY AND RESTROOM ARE WITHIN THE BASE FRAME DEPTH - EXCEPT FOR P-TRAPS.
- ALL PULL DIMENSIONS ARE TO BASE FRAME.
- EQUIPMENT INSTALLER TO PROVIDE INDIVIDUAL BACKFLOW PREVENTER, MCCANN'S ABF-1 (ASSE 1022) OR EQUIVALENT BFP ASSEMBLY, FOR COFFEE MACHINE, CARBONATED BEVERAGE MACHINE, CAPPUCCINO MACHINE, TEA TOWER, ICEE MACHINE, AND WATER BOOSTER PUMP/BIB STATION.
- EQUIPMENT INSTALLER TO PROVIDE INDIVIDUAL BACKFLOW PREVENTER, WATTS LF7 OR EQUIVALENT BFP ASSEMBLY, FOR ICE MAKER.
- NO PLUMBING IS TO PROJECT THROUGH OUTSIDE BASE FRAME. PLUMBING IS TO BE STUBBED OUT FROM BOTTOM OF BLDG. & G.C. IS RESPONSIBLE FOR CONNECTION. POTABLE WATER LINES ARE CPVC, DWV IS PVC SCH. 40. PROVIDE 1" INSULATION ON ALL EXPOSED HW AND HWR THAT ARE NOT SURROUNDED BY BUILDING INSULATION WITH R-VALUE OF NOT LESS THAN 3 AND ON THE FIRST 8 FEET OF CW PIPING UPSTREAM OF THE WATER HEATER. INSTALL THERMAL EXPANSION TANK SO AS NOT TO BE SUPPORTED BY THE PIPING CONNECTED TO THE TANK.



9 WATER FILTER DETAIL N.T.S.

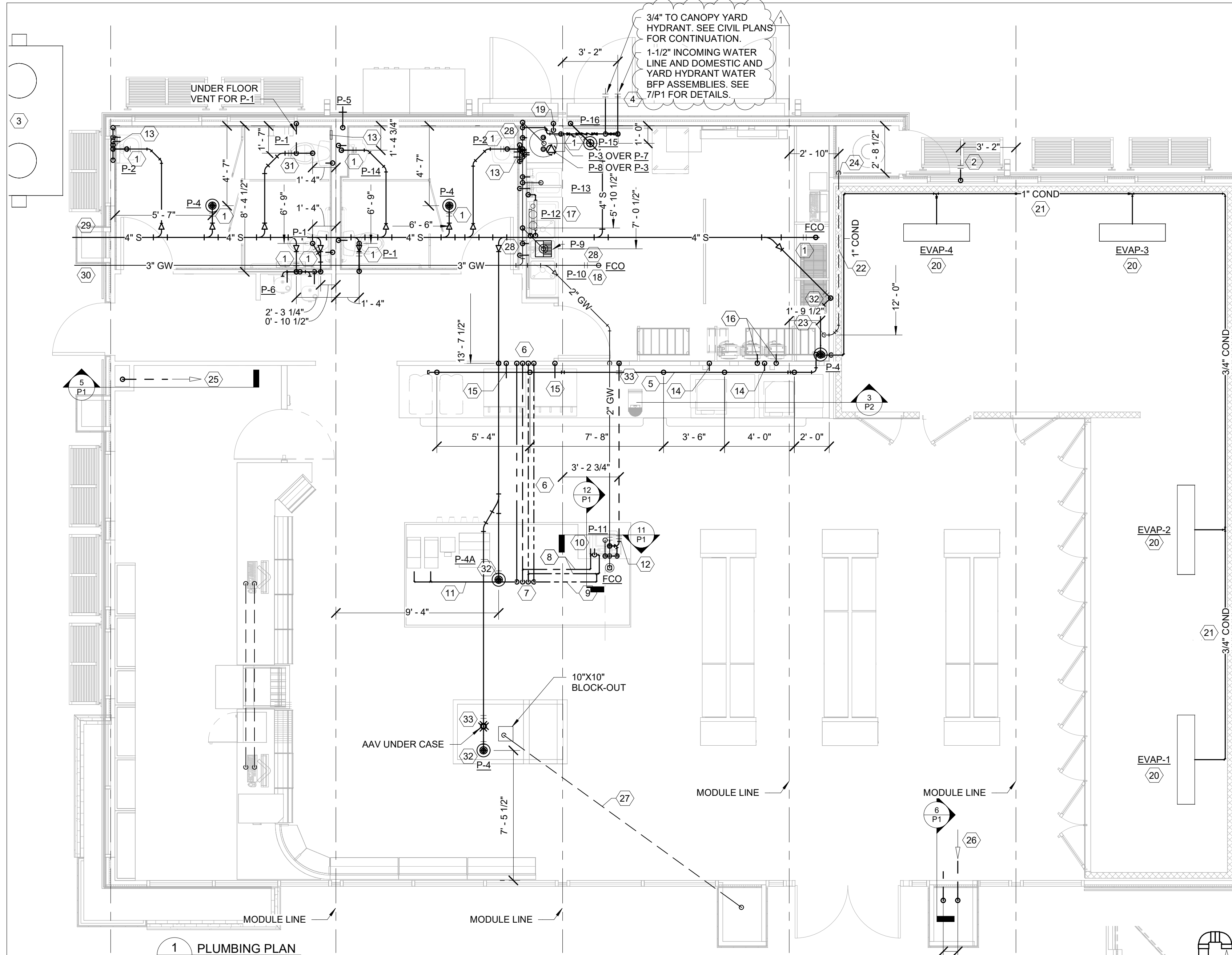


12 ISLAND VENT SIDE DETAIL 1/2" = 1'-0"

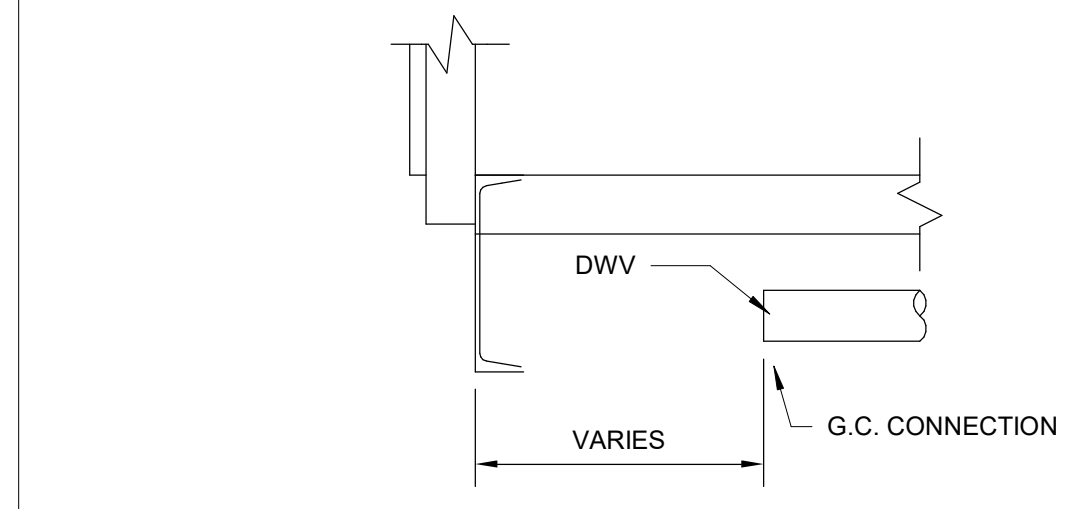


10 EVAPORATOR MOUNTING 10 P1 N.T.S.

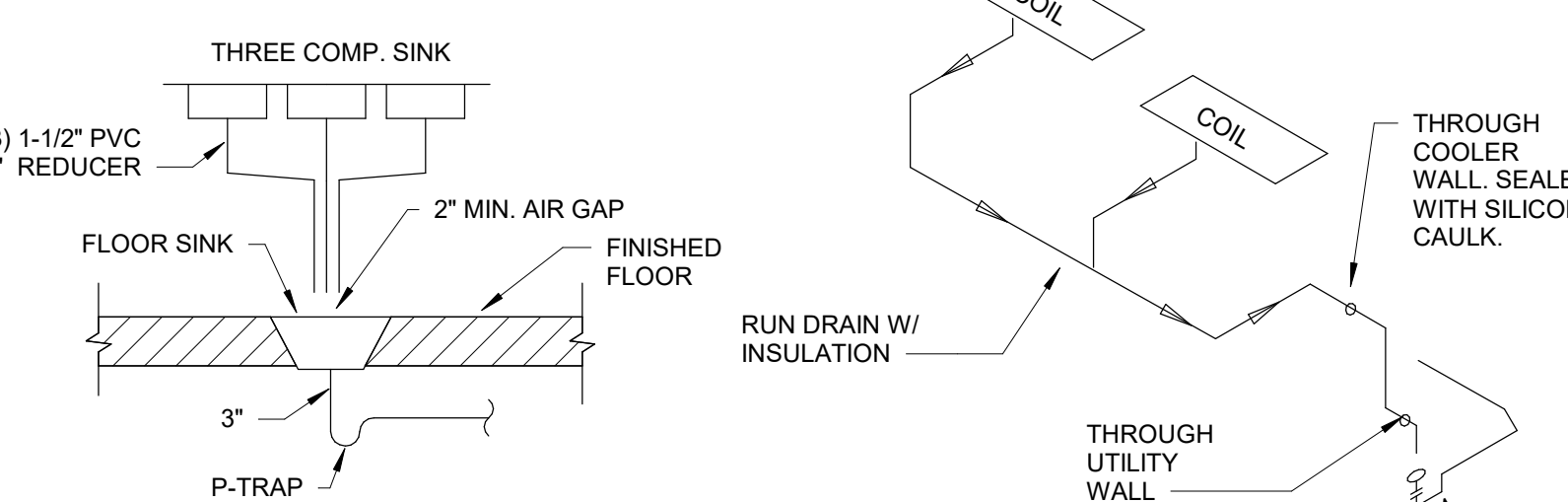
11 ISLAND VENT FRONT DETAIL 1/2" = 1'-0"



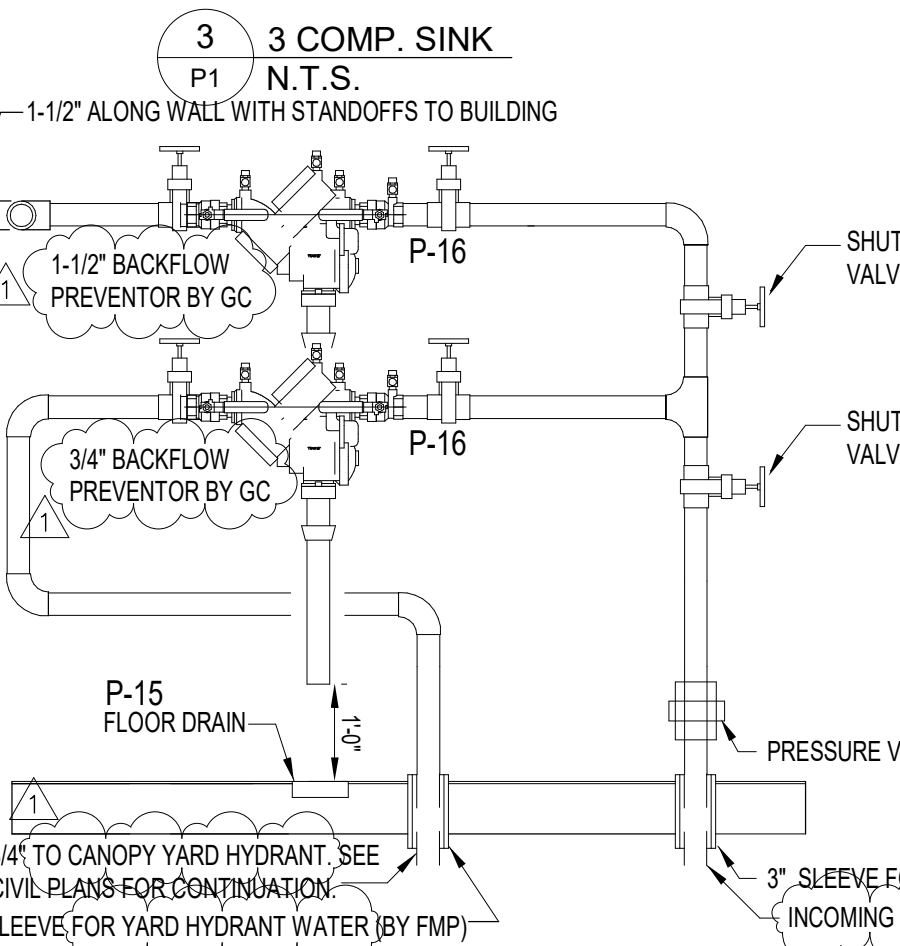
1 PLUMBING PLAN 1/4" = 1'-0"



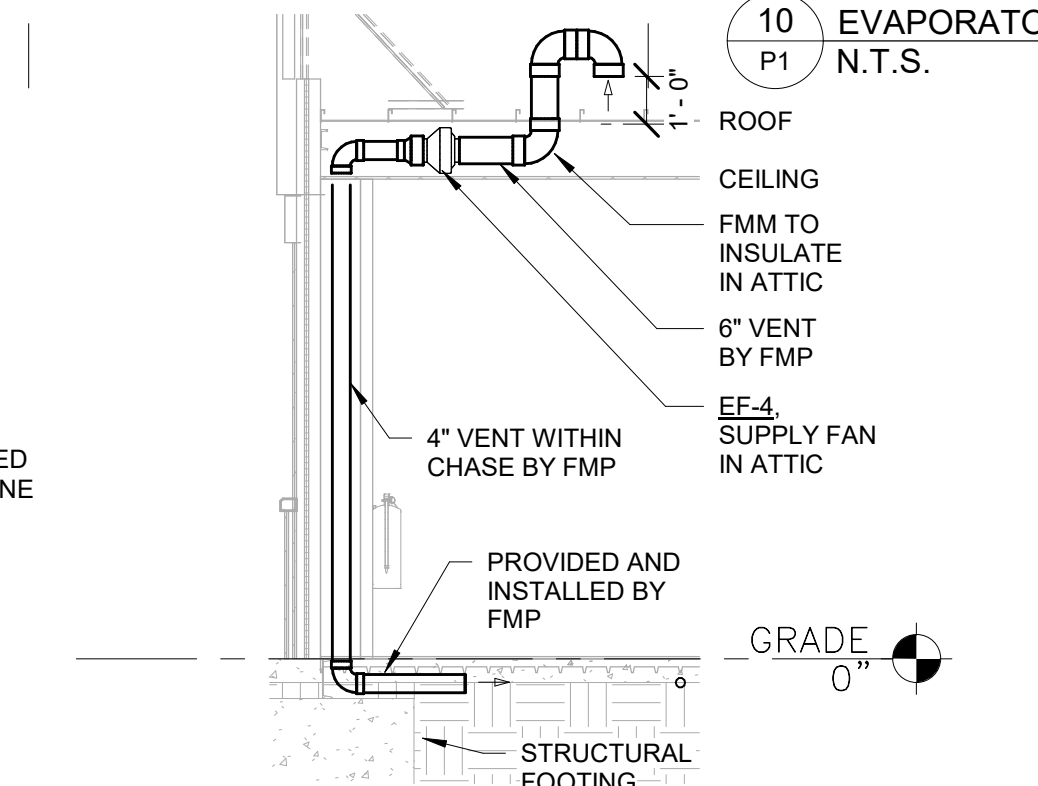
2 INTERIOR CONNECTION TO SANITARY SEWER N.T.S.



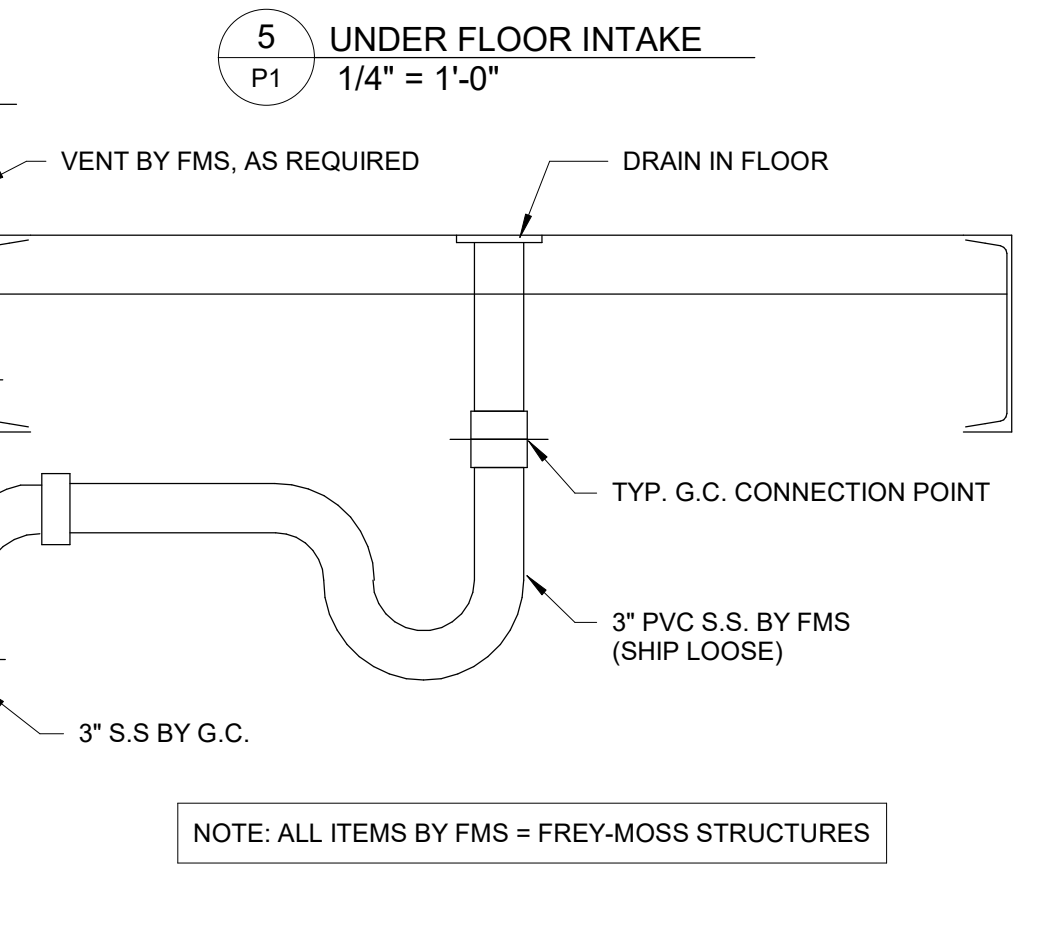
4 COOLER CONDENSATE DIAGRAM N.T.S.



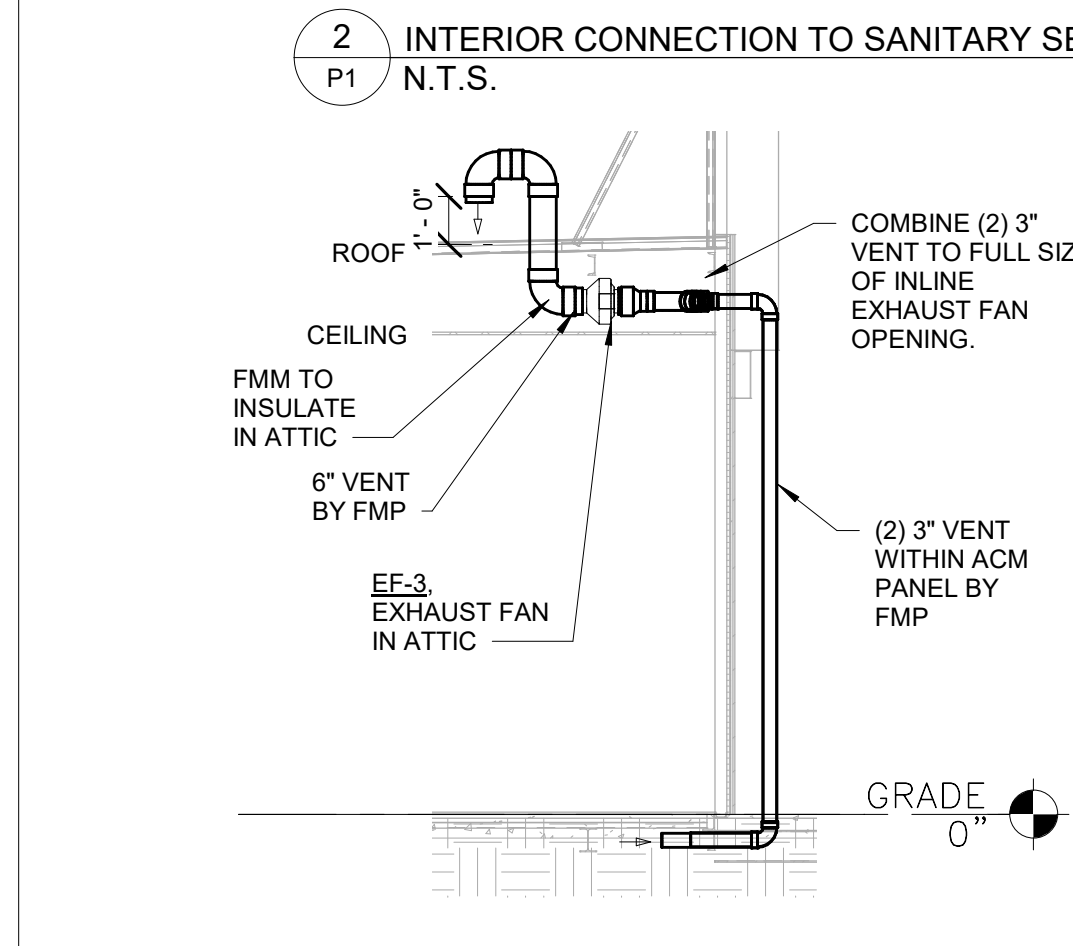
7 WATER SERVICE DETAIL N.T.S.



5 UNDER FLOOR INTAKE 1/4" = 1'-0"



8 DRAIN IN FLOOR CONNECTION DETAIL N.T.S.



6 UNDER FLOOR EXHAUST 1/4" = 1'-0"

**PLUMBING FIXTURE SCHEDULE**

ITEM #	FIXTURE	HW	CW	DRAIN	DESCRIPTION AND REMARKS (OR EQUAL)	FURNISH	INSTALL
P-1	WATER CLOSET - ADA	-	1/2"	3"	WATER CLOSET - ZURN #Z-5555 - 1.28 GPF ELONGATED BOWL, TANK AND LOCKING LID - ZURN #Z5535/45/55TNKNVL, OPEN SEAT - BENEKE 523 SS.	FMP	FMP
P-2	LAVATORY - ADA	1/2"	1/2"	1-1/4"	LAVATORY - ZURN #Z5350 19" x 17" VITREOUS CHINA WALL MOUNTED W/ NO BACK-SPLASH FAUCET - ZURN #Z-6015XLFS - SENSOR ACTIVATED, CENTERSET ON DRAIN W/ 0.5 GPM AERATOR W/ ASSE 1070 APPROVED MIXING VALVE - SLOAN #MIX-135-A.	FMP	FMP
P-3	WATER HEATER	-	3/4"	-	RHEEM #E20A-12-G 20 GALLON, 208V SINGLE PHASE, 12000 WATTS WITH WATTS #PLT-5. 2.1 GALLON EXPANSION TANK. 98% MAXIMUM RECOVERY EFFICIENCY.	FMP	FMP
P-4	FLOOR DRAIN	-	-	3"	WADE #1103-STD5-NH-6 3" FLOOR DRAIN W/ TRAP SEAL BY PROSET SYSTEMS TRAPGUARD #TG33IP WITH FUNNEL EXCEPT IN RESTROOMS	FMP	FMP
P-4A	FLOOR DRAIN	-	-	3"	WADE #1103-STD5-NH-6 3" FLOOR DRAIN. PROVIDE AND INSTALL FLOOR DRAIN WITH TEMPORARY DRAIN PLUG, CHERNE PIPE GRIPPER, OR EQUAL. PROVIDE SURE SEAL TRAP SEAL, OR EQUAL, FOR FUTURE USE.	FMP	FMP
P-5	HOSE BIBB	-	1/2"	-	WOODFORD MODEL 30 FREEZELESS, AUTOMATIC DRAINING WALL FAUCET WITH ASSE 1052 DUAL CHECK BACKFLOW PREVENTER.	FMP	FMP
P-6	DRINKING FOUNTAIN	-	1/2"	1-1/4"	HALSEY TAYLOR MODEL #HRFSEBP, BI-LEVEL.	FMP	FMP
P-7	SERVICE MOP SINK	1/2"	1/2"	3"	FIAT #MSB2424 FLOOR MOUNTED MOP SINK 24"x24"x10" W/ FIAT #830AA SERVICE SINK FAUCET @ 36" AFF, OR EQUAL (DRAIN TO GREASE TRAP).	FMP	FMP
P-8	RECIRCULATION PUMP	3/4"	-	-	TACO MODEL 007 CARTRIDGE CIRCULATOR, 115/160, 0.74 AMPS, 3250 RPM, 1/25 HP W/ AUTOMATIC TIME SWITCH CONTROLS (ASHRAE 90.1 §7.4.4.2).	FMP	FMP
P-9	FLOOR SINK	-	-	3"	PVC FLOOR SINK W/ HALF GRATE TRAP SEAL BY PROSET SYSTEMS TRAPGUARD #TG33IP (DRAIN TO GREASE TRAP).	FMP	FMP
P-10	3-COMPARTMENT SINK	3/4"	3/4"	3" (3)	ELKAY SSP - #3C10X14-2-16X, 66" GREENWORLD W/ ZURN, #Z800X0-AF-PR1, PRE-RINSE HOSE ASSEMBLY.	FMP	FMP
P-11	HAND SINK	1/2"	1/2"	1-1/2"	ADVANCED TABCO D1-1-35 DROP-IN SINK WITH ASSE 1070 APPROVED MIXING VALVE - SLOAN #MIX-135-A (DRAIN TO GREASE TRAP).	SHOPCO	G.C.
P-12	WATER FILTER	-	3/4"	-	3M WATER FILTRATION SYSTEM AQUAPURE DP290.	FMP	FMP
P-13	HAND SINK	1/2"	1/2"	1-1/2"	ADVANCE TABCO MODEL #7-PS-75 W/SPLASH MOUNT GOOSENECK FAUCET MODEL K-132, BASKET TYPE DRAIN.	FMP	FMP
P-14	URINAL	-	3/4"	2"	ZURN OMNI-FLO URINAL MODEL #Z5755-U, ADA DESIGNED WITH ZURN LOW FLOW FLUSH VALVE (0.5 GPF) MODEL #ZTR6203-EWS-LL, POWERED BY 4 "AA" LONG LIFE BATTERIES	FMP	FMP
P-15	FLOOR DRAIN	-	-	4"	WADE #1104-STD5-NH-6 4" CAST IRON FLOOR DRAIN W/TRAP SEAL BY TRAP GUARD #TG33	FMP	FMP
P-16	BACKFLOW PREVENTER	-	SEE DETAIL	-	WATTS #LF909. PROVIDE RELIEF PIPING TO FLOOR DRAIN W. AIR GAP.	OTHERS	OTHERS

C:\Users\avey\Documents\20170437.5\_P1.dwg 03/04/2021 10:58:00 AM Avery Laine