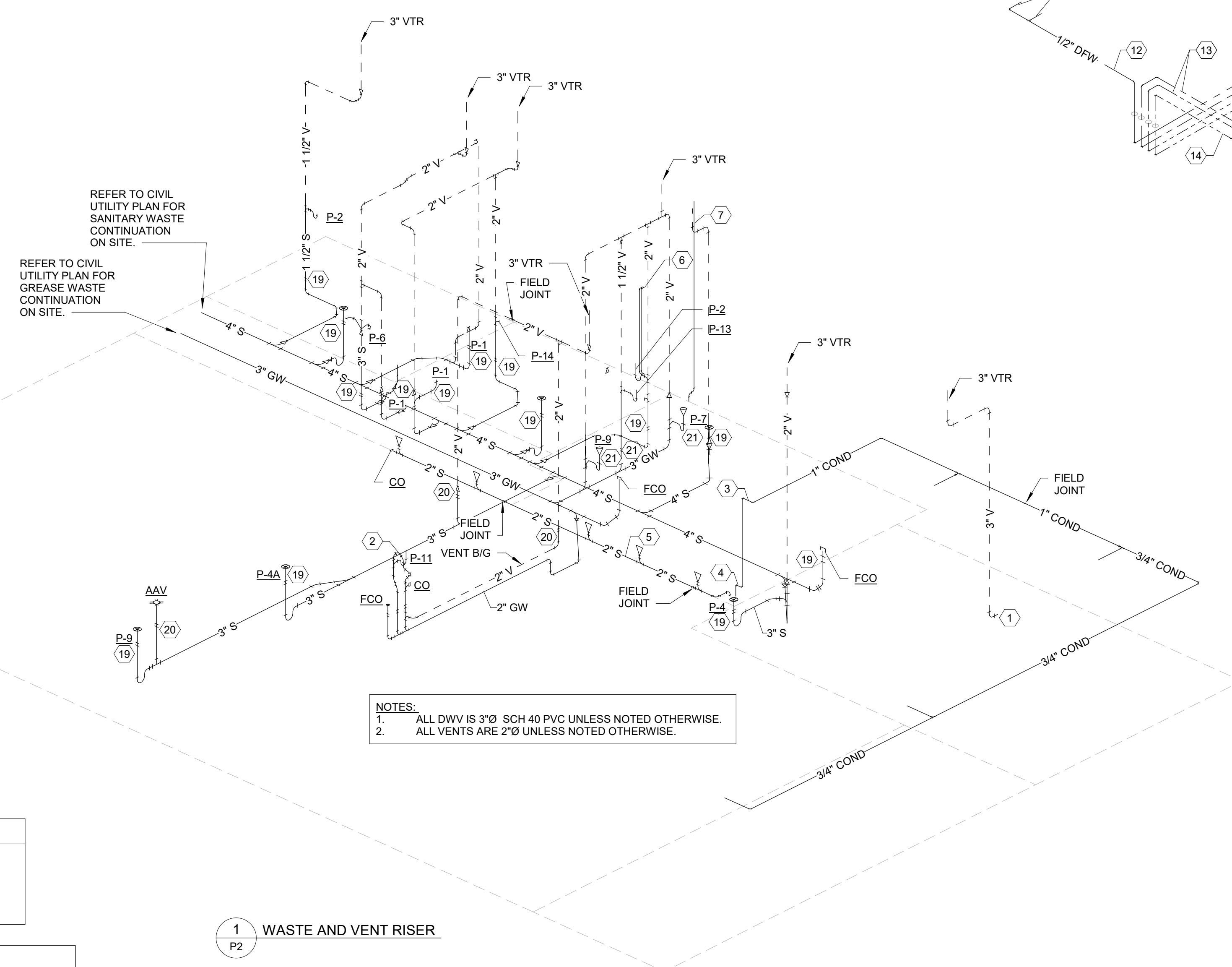
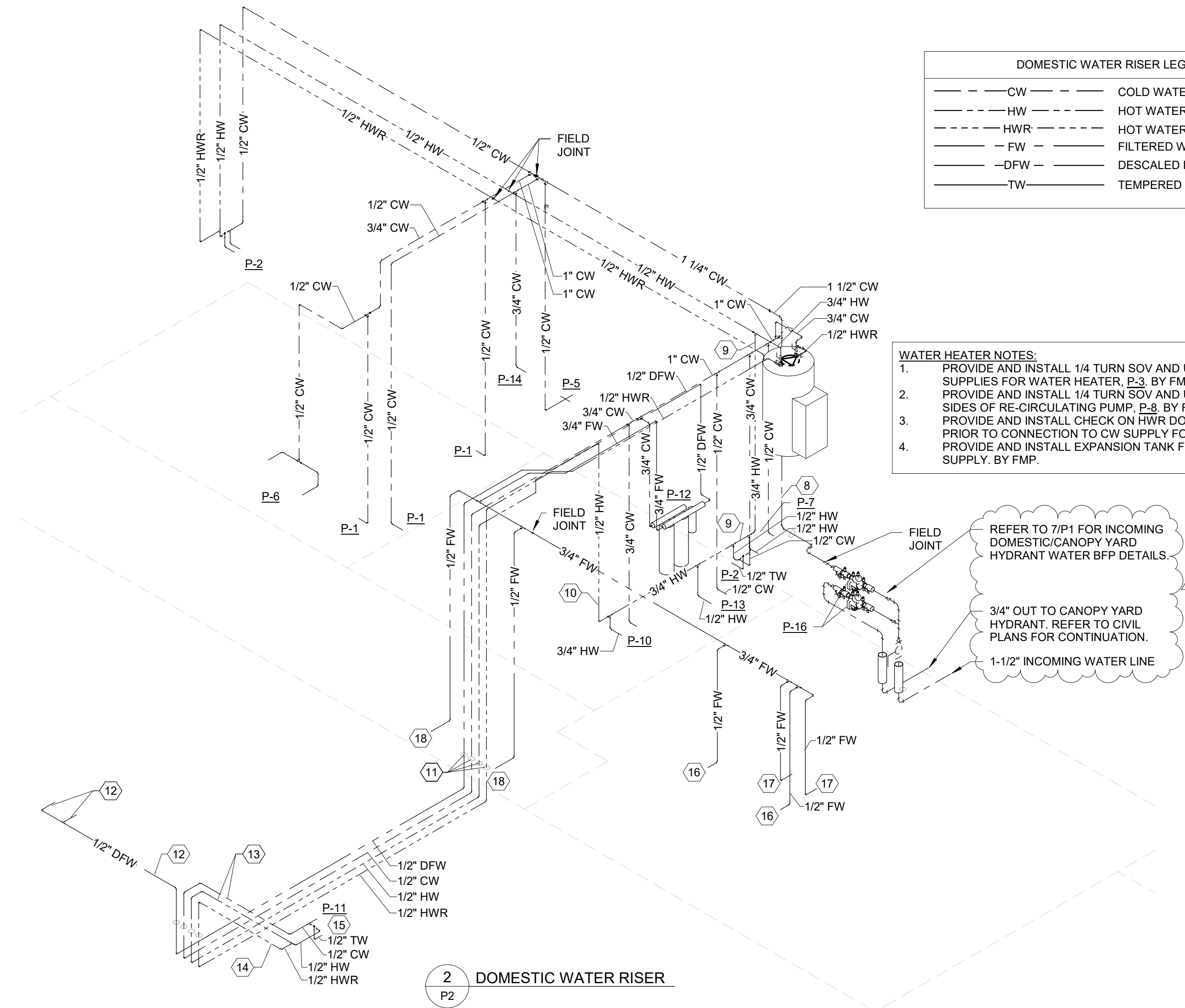
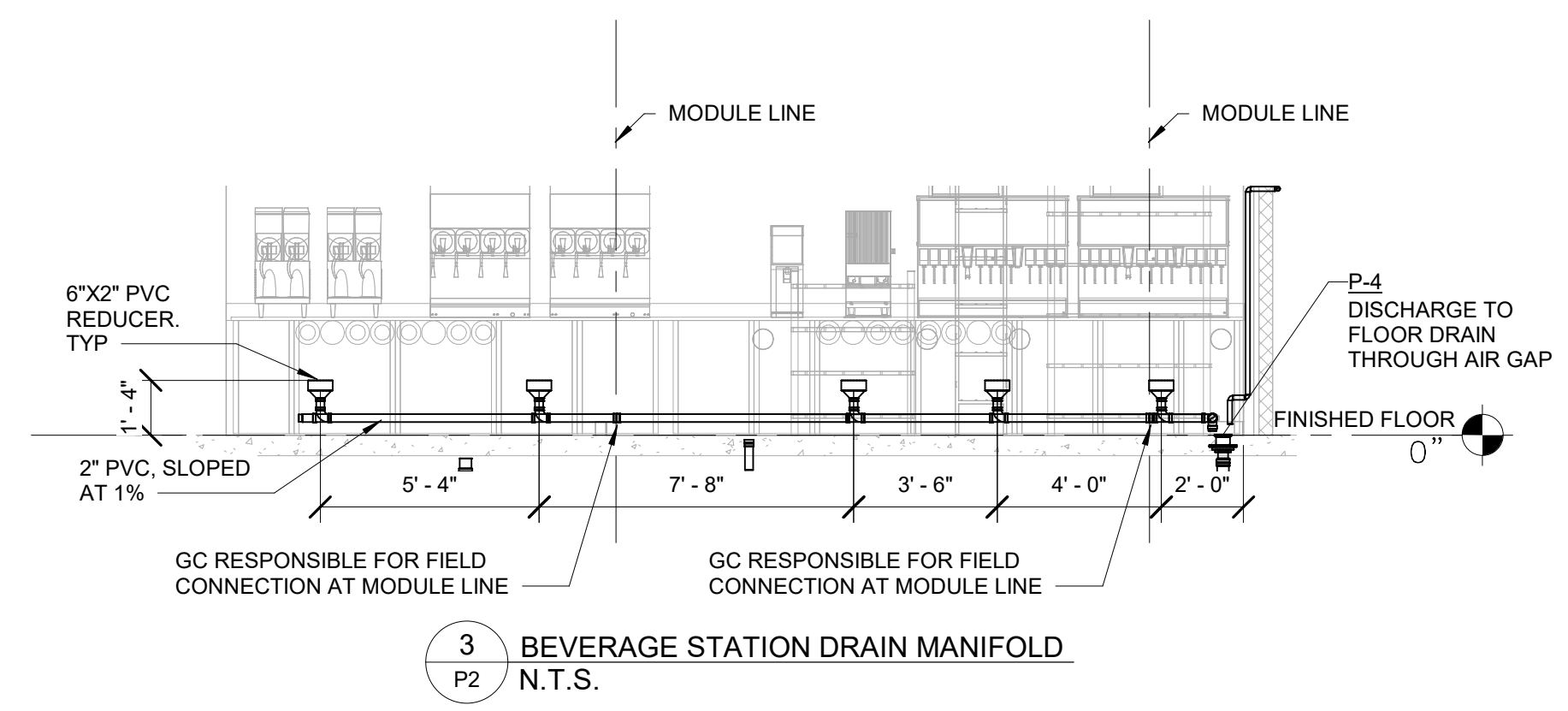


**DOMESTIC WATER RISER LEGEND**

---	CW	COLD WATER
---	HW	HOT WATER
---	HWR	HOT WATER RETURN
---	FW	FILTERED WATER
---	DFW	DESCALED FILTERED WATER
---	TW	TEMPERED WATER

- WATER HEATER NOTES:**
1. PROVIDE AND INSTALL 1/4 TURN SOV AND UNION ON HW & CW SUPPLIES FOR WATER HEATER, P-3, BY FMP.
  2. PROVIDE AND INSTALL 1/4 TURN SOV AND UNION OF BOTH SIDES OF RE-CIRCULATING PUMP, P-8, BY FMP.
  3. PROVIDE AND INSTALL CHECK ON HWR DOWNSTREAM OF P-8 PRIOR TO CONNECTION TO CW SUPPLY FOR P-3, BY FMP.
  4. PROVIDE AND INSTALL EXPANSION TANK FOR P-3 ON CW SUPPLY, BY FMP.



- NOTES:**
1. ALL DWV IS 3/10 SCH 40 PVC UNLESS NOTED OTHERWISE.
  2. ALL VENTS ARE 2" UNLESS NOTED OTHERWISE.

**WASTE AND VENT RISER LEGEND**

---	SANITARY WASTE
---	GREASE WASTE
---	VENT
---	CONDENSATE

**PIPE SUPPORT SPACING**

	HORIZONTAL	VERTICAL
CPVC ø ≤ 1-1/4"	3'	10'
CPVC ø > 1-1/4"	4'	10'
PVC	4'	10'

**KEYNOTES**

NO.	DESCRIPTION
1	G.C. CONNECTION TO GREASE INTERCEPTOR VENT. REFER TO CIVIL DRAWINGS FOR CONTINUATION.
2	ISLAND VENT FOR HANDSINK, P-11. REFER TO DETAIL 11/P1 AND 12/P1. G.C. CONNECTION FOR P-11 HANDSINK DRAIN AND VENT SHALL BE AT VERTICAL PIPE WHERE FIXTURE DRAIN AND VENT, PROVIDED BY FMS, PENETRATE FLOOR.
3	CONDENSATE PIPING THROUGH COOLER WALL.
4	CONDENSATE PIPING THROUGH UTILITY WALL.
5	2" DRAIN MANIFOLD FOR BEVERAGE STATION. PROVIDE 2" AIR GAP FOR ALL EQUIPMENT DISCHARGE TO MANIFOLD. RECEPTERS SHALL BE 6" TO 2" PVC REDUCER. MANIFOLD SHALL DISCHARGE TO P-4 THROUGH 2" AIR GAP. G.C. RESPONSIBLE FOR FIELD CONNECTION AT MODULE LINE. REFER TO DETAIL 3/P2.
6	ROUTE 3/4" DRAIN LINE FROM WATER HEATER DRAIN PAN AND SEPARATE FULL-SIZE PRESSURE RELIEF LINE FROM WATER HEATER DOWN TO P-7 WITH 2" AIR GAP.
7	ROUTE 1" CONDENSATE FROM RTU'S DOWN THRU ROOF INTO WALL. CONDENSATE SHALL STUB THRU WALL AND DISCHARGE TO MOP SINK, P-7, THROUGH AIR GAP.
8	ROUTE 1-1/2" CW UP IN WALL, THEN ROUTE HORIZONTAL ABOVE CEILING.
9	ROUTE 3/4" HW DOWN IN WALL, THEN ROUTE HORIZONTAL LOW IN WALL SO THAT INDIVIDUAL HW SUPPLIES TO FIXTURES ARE LIMITED TO 24" IN LENGTH EACH. COORDINATE WITH ALL TRADES.
10	ROUTE 1/2" HW UP IN WALL, THEN ROUTE HORIZONTAL ABOVE CEILING.
11	FMS TO ROUTE INSULATED 1/2" CW, HW, HWR, AND DFW PIPING DOWN IN WALL THROUGH SLAB, THEN HORIZONTAL UNDER FLOOR THROUGH STEEL.
12	G.C. SHALL EXTEND 1/2" DFW FOR COFFEE MACHINES IN MILLWORK. PROVIDE (2X) 3/8" STUBS WITH 1/4-TURN BALL VALVES.
13	G.C. SHALL EXTEND 1/2" CW & HW TO MIXING VALVE WITHIN MILLWORK. INSTALL MIXING VALVE IN ACCESSIBLE LOCATION WITHIN MILLWORK.
14	G.C. SHALL EXTEND 1/2" HWR WITHIN MILLWORK AND CONNECT TO 1/2" HW UPSTREAM OF MIXING VALVE, WITHIN 12" OF MIXING VALVE.
15	G.C. SHALL ROUTE 1/2" CW & TW FROM MIXING VALVE TO HANDSINK, P-11.
16	INSTALL FILTERED WATER STUBS FOR ICE MACHINES AT 72" AFF.
17	INSTALL FILTERED WATER STUBS FOR BOOSTER PUMPS AT 96" AFF.
18	INSTALL FILTERED WATER STUBS FOR ICEE MACHINES AT 21" AFF.
19	G.C. CONNECTION TO SANITARY SEWER UNDER FLOOR. G.C. CONNECTION SHALL BE AT VERTICAL PIPE WHERE FIXTURE DRAIN, PROVIDED BY FMS, PENETRATES FLOOR.
20	G.C. CONNECTION TO VENT STUB BELOW FLOOR PROVIDED BY FMS.
21	G.C. CONNECTION TO GREASE WASTE UNDER FLOOR. G.C. CONNECTION SHALL BE AT VERTICAL PIPE WHERE FIXTURE DRAIN, PROVIDED BY FMS, PENETRATES FLOOR.

**PROFESSIONAL SEAL**



03/04/2021  
**PROFESSIONAL IN CHARGE**  
ROBERT BLAKE SMITH

**PROJECT MANAGER**  
ERIC WONG

**QUALITY CONTROL**  
ERIC WONG

**DRAWN BY**  
AVERY LANE

**PROJECT NAME**



**MURPHY OIL CONVENIENCE STORE**  
12045 SOUTH PARKER RD, PARKER  
COLORADO 80138



1801 Rockdale Industrial Blvd.  
Conyers, Georgia 30012  
Voice: (800) 366-6385  
Fax: (770) 483-6037

FMS JOB NUMBER  
G20MU0117

FMS MODEL NUMBER  
XXXXXX

**PROJECT NUMBER**  
20170437.5

**SHEET TITLE**

**PLUMBING RISER**

**SHEET NUMBER**

**P2**

**PROTO V2.0 11/01/2019**