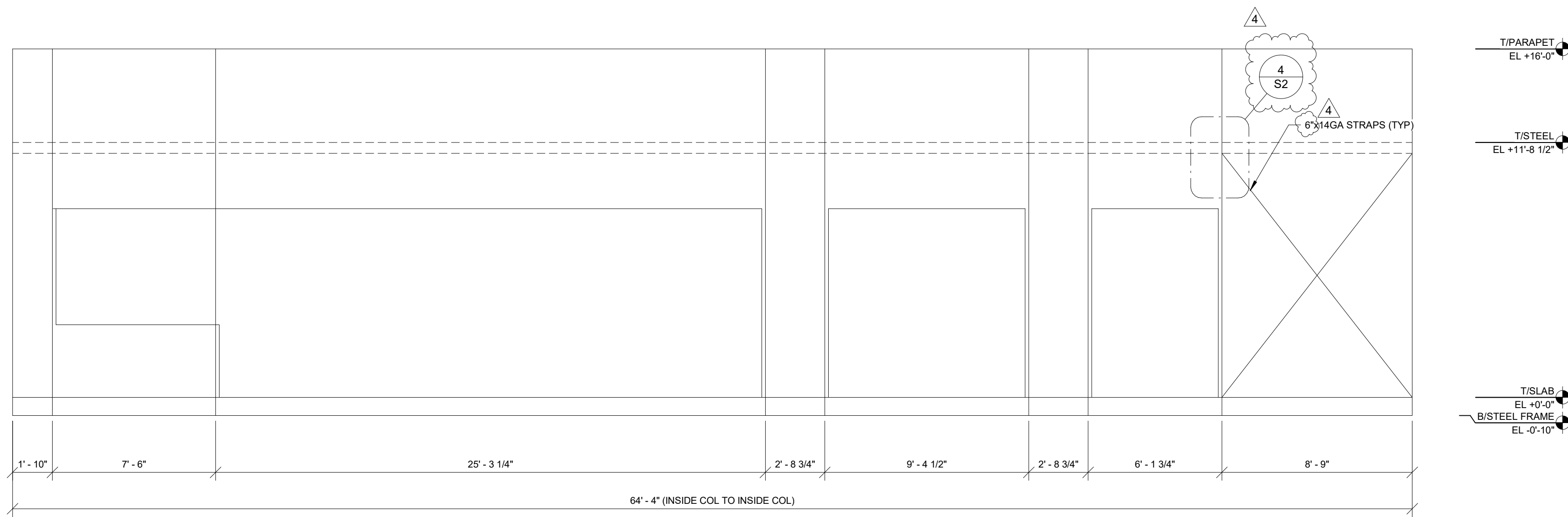


COPYRIGHT NOTICE

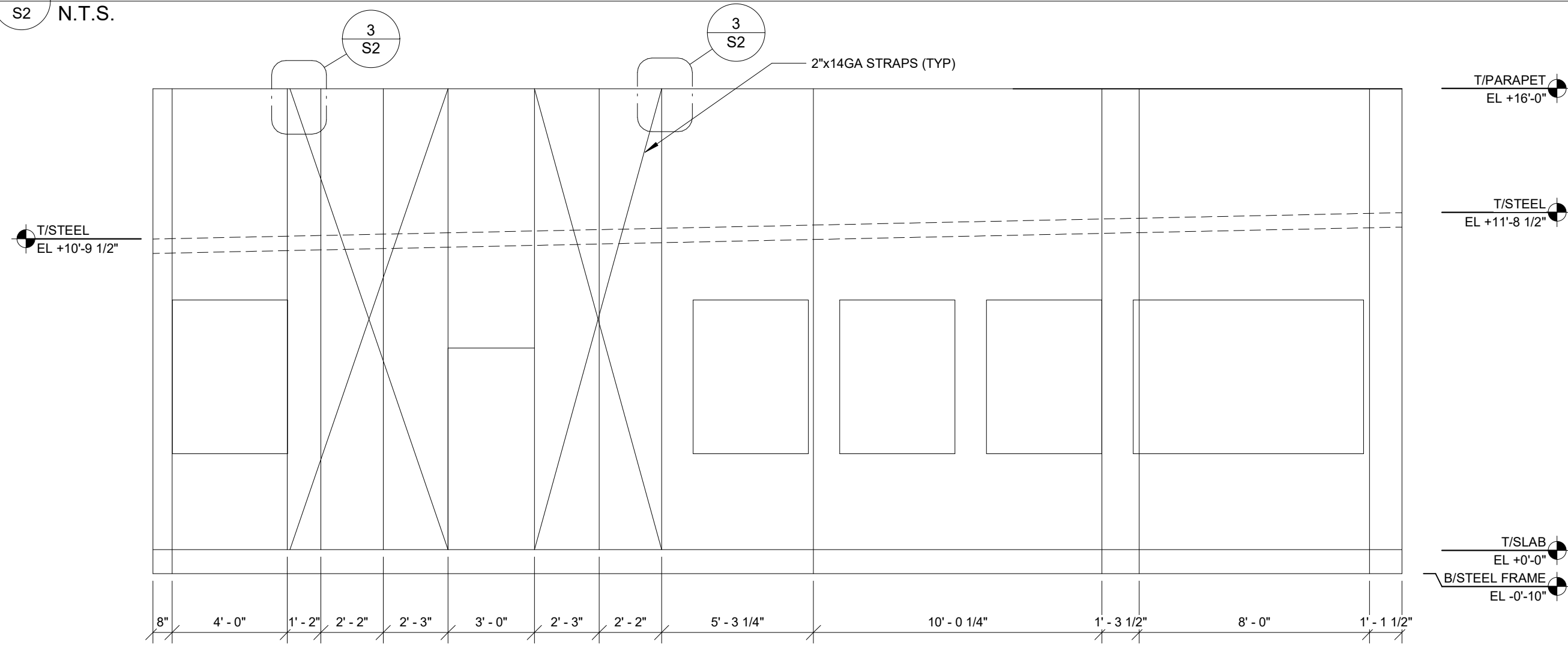
This drawing is the property of the above referenced Professional and is not to be used for any purpose other than the specific project and site named herein, and cannot be reproduced in any manner without the express written permission from the Professional.

ISSUE RECORD

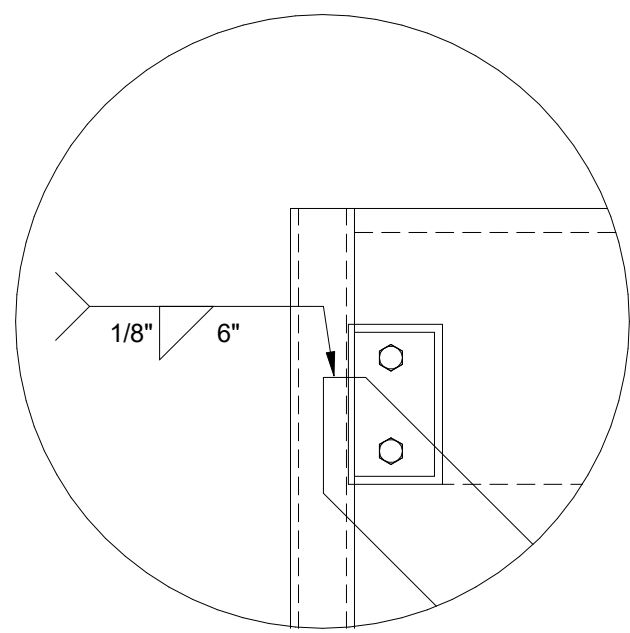
DATE	REV.	DESCRIPTION
10/23/2020		PERMIT SUBMISSION SET
05/28/2021	1	REVISED PERMIT SET
08/04/2022	4	REVISED SET PER PLANNING COMMENTS



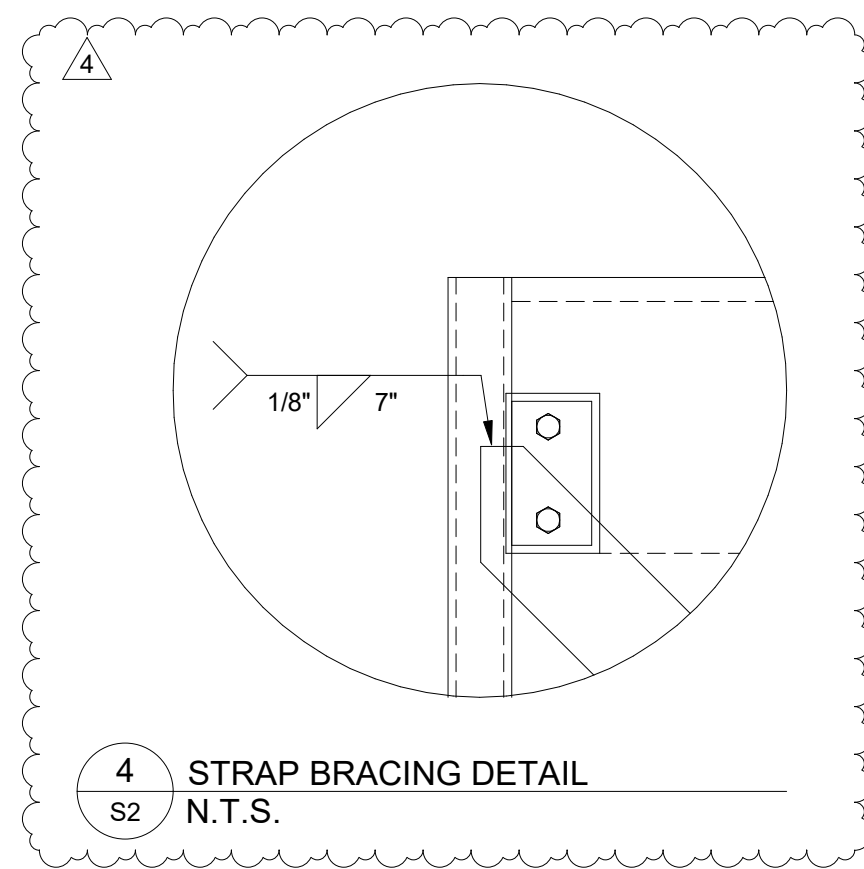
1 X-BRACES FRONT ELEVATION
S2 N.T.S.



2 X-BRACES EAST ELEVATION
S2 N.T.S.

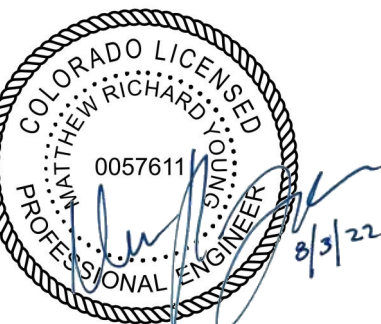


3 STRAP BRACING DETAIL
S2 N.T.S.



4 STRAP BRACING DETAIL
S2 N.T.S.

PROFESSIONAL SEAL



PROFESSIONAL IN CHARGE

M YOUNG

PROJECT MANAGER

M YOUNG

QUALITY CONTROL

B McGLADE

DRAWN BY

D MAHONEY

PROJECT NAME

MURPHY EXPRESS

MURPHY OIL CONVENIENCE STORE
12045 SOUTH PARKER RD,
PARKER
COLORADO 80138

FREY MOSS
STRUCTURE

1801 Rockdale Industrial Blvd.
Conyers, Georgia 30012
Voice: (800) 366-6385
Fax: (770) 483-6037

FMS JOB NUMBER
G20MU00117

FMS MODEL NUMBER
XXXXXX

PROJECT NUMBER

20170437.5

SHEET TITLE

STRAP BRACING DETAILS

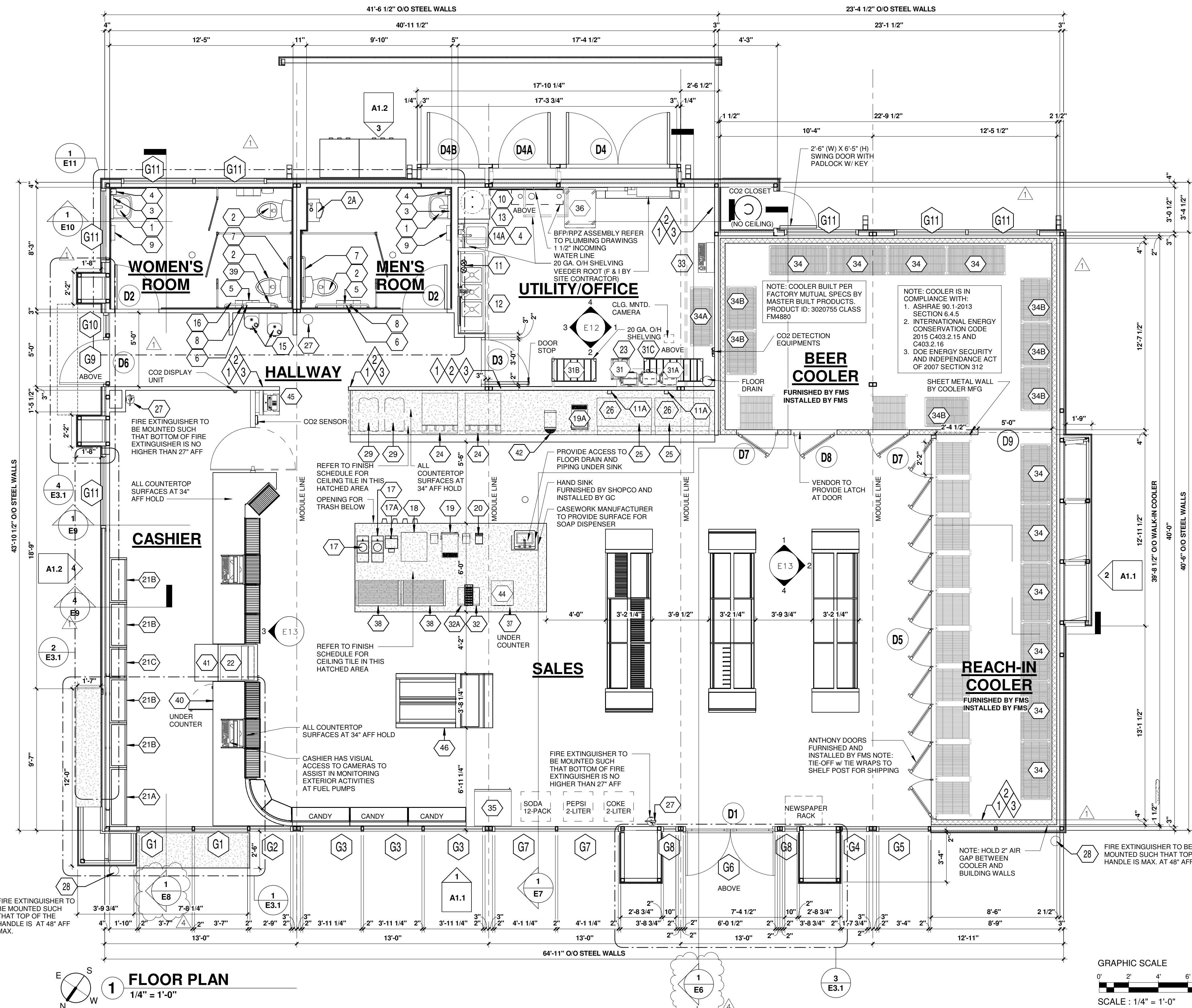
SHEET NUMBER

S2

PROTO V2.0 11/01/2019

BAKER, INGRAM, & ASSOCIATES
STRUCTURAL ENGINEERS

TWO WHITE HORSE PIKE HADDON HEIGHTS, NJ 08035
(856) 310-1491 fax: (856) 310-1829



- ### NOTES
- ALL PULL DIMENSIONS ARE TAKEN FROM OUTSIDE OF THE STEEL BASE FRAME OF THE BUILDING.
 - CASHIER COUNTERS, P.O.S. RACKS AND COFFEE COUNTERS TO BE FURNISHED AND INSTALLED BY CABINET SUPPLIER.
 - DI DOORS TO REMAIN UNLOCKED WHEN THE BUILDING IS OCCUPIED. OWNER TO PROVIDE SIGNAGE ON SITE.
 - TOILETS, URINALS, HAND SINKS, 3 COMPARTMENT SINKS, MOP SINK, PREP SINKS AND PERMANENT COUNTERS/CABINETS MUST BE SEALED TO FLOORS AND WALLS WITH A SILICONE CAULK SEALANT.
 - ACM BOTTOM TRIM TO BE CUT BACK AT DOOR THRESHOLD AND STOREFRONT FRAMING SITES THAT MEET SITE CONCRETE SURFACES SO THAT THE SITE CONCRETE SURFACES MAY BE POURED BELOW THRESHOLD AND STOREFRONT WINDOW SILLS.

- STATE LABEL LOCATION
- MGF. DATA LABEL LOCATION
- 3RD PARTY INSPECTION LABEL LOCATIONS

WT	ITEM	DESCRIPTION	FURNISH	INSTALL
1	LAVATORY - ADA COMPLIANT	LAVATORY - ZURN #5350 19" x 17" CHINA WALL MOUNTED W/ NO BACK-SPLASH FAUCET - ZURN #2615-XL - AQUASENSE BATTERY POWERED, CENTERSET ON DRAIN W/ 0.5 GPM AERATOR W/ ASSE 1070 APPROVED MIXING VALVE - SLOAN #MIX155-A	FMP	FMP
2	WATER CLOSET - ADA COMPLIANT	WATER CLOSET - ZURN #Z555- ELONGATED BOWL, TANK WITH LOCKING LID - ZURN #Z555-4555TKINVL	FMP	FMP
3A	URINAL	ZURN #Z575-5L ADA DESIGNED WITH ZURN LOW FLOW FLUSH VALVE (0.5 GPF) MODEL # ZTR020-5VW-L LOWEYER BY 4" X 14" LONG LINE BATTERIES	FMS	FMS
3B	MIRROR	#B-1555 18" x 36" FRAMELESS (OR EQUAL) 40" AFF TO BOTTOM OF REFLECTIVE SURFACE	FMS	FMS
4	SOAP DISPENSER	GOJO HAND SOAP DISPENSER	FMS	FMS
5	TOILET TISSUE DISPENSER	TSH #Z737013 STUB TISSUE DISPENSER 9" ROLL	FMS	FMS
6	42" GRAB BAR	1 1/2" ROUND GRAB BAR, 34" A.F.F. TO CENTER OF BAR	FMS	FMS
7	36" GRAB BAR	1 1/2" ROUND GRAB BAR, 34" A.F.F. TO CENTER OF BAR	FMS	FMS
8	18" GRAB BAR	1 1/2" ROUND GRAB BAR	FMS	FMS
9	ELECTRIC HAND DRYER	XLERATOR MODEL # XL-BW, THERMOSET RESIN W/ ADA ACCESS KIT	FMP	FMP
10	SERVICE MOP SINK	FIAT #MSB245 ON FLOOR MOP SINK W/ FIAT #330AA SERVICE SINK FAUCET @ 36" AFF.	FMP	FMP
11	WATER FILTERS	3M WATER FILTRATION SYSTEM AQUAPURE DP290	FMP	FMP
11A	ECO3ICE	ECO3ICE - ANTIMICROBIAL ICE PROTECTION MODEL NO ECO3ICE X4 APPROXIMATELY 3.81L X 3.81W X 8.87H (104.100 240V, 50/60 HZ FOR PROVIDED 24V, 1.25A TRANSFORMER (INTEGRATED INTO POWER CORD), 3/8" OD PUSH/PULL WATER LINE CONNECTION, TO BE INSTALLED IN THE WATER SUPPLY LINE BETWEEN FILTRATION SYSTEM AND ICE MACHINE	EQUIPMENT	EQUIPMENT
12	3-COMP SINK	ELKAY SSP - #3C10X14-2-16X, 66" GREENWORLD W/ ZURN #Z800X-AF-PR1, PRE-RINSE HOSE ASSEMBLY	FMP	FMP
13	WATER HEATER	20 GALLON RHEEM #E20A-12-G "POINT OF USE" 240V SINGLE PHASE, 12000 WATTS WITH WATTS #FL-5, 2.1 GALLON EXPANSION TANK	FMP	FMP
14A	HAND SINK	@ UTILITY ROOM WITH SPLASH MOUNT GOOSENECK FAUCET & BASKET TYPE DRAIN	FMP	FMP
15	DRINKING FOUNTAIN	ADA WALL MOUNTED DRINKING FOUNTAINS - SEE PLUMBING DRAWINGS	FMP	FMP
16	PURSE SHELF	GAMCO MS SHELF MODEL NO. MS-18 OR EQUAL, 18"L X 4"W X 1-1/4"H (SEE INTERIOR RESTROOM ELEVATION)	FMS	FMS
17	COFFEE BREWER	BUNN BREW-WISE SINGLE SH DBC SST-BLACK 120/240V, 17.5 AMPS 9.3"W X 23.1"D X 13.0"H PRODUCT NO. 388000000 WITH SERVER AND DRIP TRAY	EQUIPMENT	EQUIPMENT
17A	URN	BUNN BREW-WISE SINGLE SH SOFT HEAT SST-BLACK 120V, 0.75 AMPS 10.1"W X 13.2"D X 11.6"H PRODUCT NO. 27825.0000 WITH SERVER AND DRIP TRAY	EQUIPMENT	EQUIPMENT
18	CAPPUCCINO MACHINE	CURTIS G3 PRIMO CAPPUCCINO DISPENSING SYSTEM MODEL PCGT4 (4 STATION DISPENSER) 21"W X 23.65"D X 34.75"H 120/60HZ 1800W/15 AMP NEMA 5-15P, 1/4" FLARE WATER INLET	EQUIPMENT	EQUIPMENT
19	CREAMISER WITH STANDS	INTERNATIONAL DELIGHT MODEL 215 (2 DISPENSING STATIONS) 13"W X20.5"S X 31"H 2.9A 120V W/ STANDS ON EACH SIDE	EQUIPMENT	EQUIPMENT
19A	ICED COFFEE DISPENSER	INTERNATIONAL DELIGHT MODEL 215 (2 DISPENSING STATIONS) 13"W X20.5"S X 31"H, 2.9A 120V	EQUIPMENT	EQUIPMENT
20	CONDIMENT RACK	CONDIMENTS RACK - COFFEE CONDIMENT LINE UP WITH 4 TIERS	EQUIPMENT	EQUIPMENT
21A	48" CIGARETTE RACK	(11) 4" PACK PUSHER SHELVES, (1) ENHANCED LIT HEADER (2) BLACKOUT DOORS	EQUIPMENT	EQUIPMENT
21B	36-38" CIGARETTE RACK	(6) 3" STORAGE SHELVES, (1) 3" ENHANCED LIT HEADER, (2) 18" BLACKOUT DOORS	EQUIPMENT	EQUIPMENT
21C	25" E-CIG RACK	(10) 2" SOLID TOP PUSHER SHELVES, (1) 2" ENHANCED LIT HEADER	EQUIPMENT	EQUIPMENT
22	OPEN AIR COOLER	BEVERAGE AIR OPEN AIR CURTAIN MERCHANDISER MODEL BZ13-1-B WITH OUTLET 30"W X 32.34"D X 54.38"H	EQUIPMENT	EQUIPMENT
23	CARBONATOR	MCCANN'S E SERIES CARBONATOR, E400397, 115V 60HZ, 180-OUNCE SS TANK	EQUIPMENT	EQUIPMENT
24	ICEE MACHINE	VIPER 4 BARREL ICEE MACHINE 29"W X 32.5"D X 43.7"H (115V) / 60HZ / 30A	EQUIPMENT	EQUIPMENT
25	FOUNTAIN MACHINE	ICE DRINK DISPENSER - ENDURO 300, 44.38" W X 30" D X 34" H, 115V 60 HZ 5.2A (SINGLE 0.5 OUTLET)	EQUIPMENT	EQUIPMENT
26	ICE MACHINE	MODULAR CUBELET ICE MACHINE, FD-650M, J-C, 22"W X 24"D X 26"H	EQUIPMENT	EQUIPMENT
27	FIRE EXTINGUISHER	WALL HUNG FIRE EXTINGUISHER #10 CLASS ABC WITH UL RATING 4A-60BC. LOCATION TO BE CONFIRMED IN FIELD WITH LOCAL FIRE INSPECTOR.	GC	GC
28	FIRE EXTINGUISHER	WALL HUNG FIRE EXTINGUISHER, ANSUL C20 #429017	GC	GC
29	CARBONATOR	BUNN ULTRA - 2 CFV, 2-HOPPER, 2 HEADS EACH, STAINLESS BLACK, 12 AMP, 1.2 KW, 120 VOLT	EQUIPMENT	EQUIPMENT
31	ICE TEA BIB RACK	SINGLE DISPENSER LOCATIONS WITH MINIMAL SPACE - ALL SLANTED WIRE SHELVES, 15.64"W X 16.08"D X 7.739"H	EQUIPMENT	EQUIPMENT
31A	LANCER BIB RACK	BIB RACK / 3X5 / 30 PUMPS SIDE MOUNT WITH REGULARATORS	EQUIPMENT	EQUIPMENT
31B	ICEE BIB RACK	3 STACKED X ONE (1) BOX WIDE INCLINED 15"W X 19"D X 12"H EACH	EQUIPMENT	EQUIPMENT
31C	WATER BOOSTER	MCCANN'S WATER BOOSTER, 115V 60HZ, 2-GALLON SS TANK, 3/8" INLET/OUTLET FITTINGS, MODEL #16-2171, 14.5"W X 14.00"D X 9.5"H	EQUIPMENT	EQUIPMENT
32	CHILLI DISPENSER	GEHL'S 2.0 DISPENSER ITEM NO. G86003, 11.125" X 14.75" X 27.25"H, 110V, 2.0A	EQUIPMENT	EQUIPMENT
32A	CHEESE DISPENSER	GEHL'S 2.0 DISPENSER ITEM NO. G60003 W/ CHIP RACK, 11.125" X 14.75" X 27.25"H, 110V, 2.0A	EQUIPMENT	EQUIPMENT
33	SYSTEM SHELVING	"MOUNT IT" SYSTEM SHELVING 14"D X 148.5" TOTAL LENGTH	EQUIPMENT	EQUIPMENT
34	FOCUS WIRE SHELVING	METRO SUPER ELECTRA SHELF 24" D X 48" W X 78" H	EQUIPMENT	EQUIPMENT
34A	FOCUS WIRE SHELVING	METRO SUPER ELECTRA SHELF 18" D X 48" W X 72" H	EQUIPMENT	EQUIPMENT
34B	FOCUS WIRE SHELVING	METRO SUPER ELECTRA SHELF 24" D X 36" W X 78" H	EQUIPMENT	EQUIPMENT
35	UPRIGHT FREEZER	TRUE GDM - 26F	EQUIPMENT	EQUIPMENT
36	REFRIGERATOR	TURBO AIR MODEL #M3F24-2-N, SERVING DOOR-2, 21.7 CU.FT., 1/2 HP, 4.4 AMPS, 28.34"L X 30.34"W X 78"H	EQUIPMENT	EQUIPMENT
37	MICROWAVE	SHARP R-21 LVF 1000 WATTS MEDIUM DUTY COMMERCIAL MICROWAVE OVENS	EQUIPMENT	EQUIPMENT
38	HOT DOG ROLLER	GRILL MAX EXPRESS ROLLER GRILLS WITH BUILT-IN BUN DRAWER BY STAR MANUFACTURING MODEL #R003D, 35.75"W X 20.63"D X 12.25"H 120V, 1555 WATT, 5-15 NEMA PLUG, 12.8 AMP	EQUIPMENT	EQUIPMENT
39	SANITARY NAPKIN DISPOSAL	BOBRICK, MODEL # B-5270 OR EQUAL	EQUIPMENT	EQUIPMENT
40	SAFE	ARMOR SAFE TECHNOLOGIES, MODEL 7300, 20 7/8" W X 20"D X 31"H	EQUIPMENT	EQUIPMENT
41	LOTTERY UNIT	SCHAFFER SYSTEM INC. 3536 GAME ALL-IN-ONE UNIT, 27.5"W X 23"D X 32"H WITH LIGHT PLUG INTO EXISTING RECEPT IN SALES COUNTER	EQUIPMENT	EQUIPMENT
42	TEA DISPENSER	LANCER CORPORATION, TOUCHSCREEN TOWER, MODEL #320, 9.4"W X 18.7"D X 26.75"H, 2 AMP, 120V, 50/60HZ	EQUIPMENT	EQUIPMENT
44	STORE KIT	STORE KIT 2800	EQUIPMENT	EQUIPMENT
45	ATM	MONIMAX, 5000 CE/ 5300 XP	EQUIPMENT	EQUIPMENT
46	SANDWICH MERCHANDISER	PIPER T-CASE 6130563G W/6" RISER, 208 HZ, 44 1/8" W X 78.563"D X 64.34"H	EQUIPMENT	EQUIPMENT

DOOR SCHEDULE

MARK	SIZE	DESCRIPTION
D1	3'-0" x 7'-0"	3070 INSULATED NARROW STILE ALUMINUM CLEAR ANODIZED FINISH WITH GRAY TINTED 1" SAFETY GLASS, 4" X 1 3/4" ALUMINUM CLEAR ANODIZED FINISH FRAME W/ ROUND PUSH BAR (INTERIOR) AND PULL HANDLE (EXTERIOR), ADAMS RITE #1850-A-505 LOCK W/ BEST T-SERIES DEADBOLT 873 EXTERIOR W/ ADA COMPLIANT THUMB TURN LEVER AND ADAMS-RITE MS 1850 DEADBOLT, 4015 THRESHOLD BOLT, 4015 HEADER BOLT THREE-POINT DEADBOLT LOCKING SYSTEM OR EQUAL INTERIOR. PEMCO #229A HALF SADDLE ALUMINUM THRESHOLD 1/2" x 36" x 5", 1 1/2" PAIR 4 1/2" x 4 1/2" B.B. BUTT HINGES W/ N.R.P., PUSH SIDE MOUNT CLOSURE - LCN #4021 & 4020-18 DROP PLATE (CLEAR FINISH), DOOR SWEEP @ BOTTOM, PAINT INTERIOR WHITE TO MATCH, & EXTERIOR TO MATCH (STORE FRONT GLASS DOOR WITH (G2) GLASS ABOVE DOOR) W/ WIND CHAINS, BOTTOM RAIL OF DOOR TO BE 10" HIGH; U=0.74, SHGC=0.15, VT=0.13 - BY KAWNEER OR EQUAL
D2	3'-0" x 7'-0"	3070 SOLID WOOD DOOR W/ FRAME - PAINT GRADE - PUSH/PULL (ON THE RESTROOM SIDE), 1 1/2" PAIR 4 1/2" x 4 1/2" B.B. PRIMED BUTT HINGES W/ N.R.P., 10X2X-8" STAINLESS STEEL KICK PLATE ON BOTH SIDES, LCN #4021 PUSH SIDE MOUNT CLOSURE, FULL LENGTH ASTRAGAL, PAINTED SW SEMI-GLOSS WHITE ON BOTH SIDES.
D3	3'-0" x 7'-0"	3070 SOLID WOOD DOOR W/ FRAME - PAINT GRADE - PUSH/PULL W/ BEST T-SERIES DEADBOLT 873 W/ ADA TURN LEVER LOCK (OFFICE SIDE), 1 1/2" PAIR 4 1/2" x 4 1/2" B.B. PRIMED BUTT HINGES W/ N.R.P., 10X2X-8" STAINLESS STEEL KICK PLATE ON BOTH SIDES, PAINTED SW SEMI-GLOSS WHITE ON BOTH SIDES.
D4	3'-6" x 9'-0"	(3690) 1 3/4" HOLLOW METAL DOORS - BEST LOCK #8737K CS TUBULAR DEADBOLT (ON ACTIVE LEAF ONLY) SLIDE BOLT @ BOTTOM (ON INACTIVE LEAF ONLY), SPRING LOADED BARREL BOLT @ TOP & BOTTOM (ON INACTIVE LEAF) (2) - 6" CONTINUOUS 1 1/2" X 1 1/2" STAINLESS STEEL HINGES (ONE PER DOOR), WIND CHAINS, PAINT INTERIOR AND EXTERIOR TO MATCH EXTERIOR, FULL LENGTH ASTRAGAL.
D4A/D4B	3'-6" x 9'-0"	(3690) 1 3/4" HOLLOW METAL DOOR, SEE D4 ABOVE FOR SPECIFICATIONS & HARDWARE W/ WIND CHAINS
D4C	2'-6" x 6'-5"	(3077) 1 3/4" HOLLOW METAL DOOR, SEE D4 ABOVE FOR SPECIFICATIONS & HARDWARE W/ WIND CHAINS
D5	2'-6" x 6'-7 1/2"	ANTHONY REACH-IN COOLER DOORS (BRUSHED CHROME) FURNISHED & INSTALLED BY FMS.
D6	6'-0" x 7'-0"	3070 NARROW STILE ALUMINUM CLEAR ANODIZED FINISH WITH GRAY TINTED 1" SAFETY GLASS, 4" X 1 3/4" ALUMINUM CLEAR ANODIZED FINISH FRAME W/ PANIC EXIT PRO #510-A PANIC EXIT DEVICE # 801 SS PULL HANDLE ON EXTERIOR (OR EQUAL), 1 1/2" PAIR 4 1/2" x 4 1/2" B.B. PRIMED BUTT HINGES W/ N.R.P., LCN #4161 CLEAR FINISH, PUSH SIDE MOUNT CLOSURE, OFFSET ALUMINUM THRESHOLD, DOOR SWEEP @ BOTTOM, PAINT INTERIOR WHITE TO MATCH & EXTERIOR TO MATCH (STORE FRONT GLASS DOOR WITH (G2) GLASS ABOVE DOOR), BOTTOM RAIL OF DOOR TO BE 10" HIGH; U=0.74, SHGC=0.15, VT=0.13 - BY KAWNEER OR EQUAL
D7	2'-6" x 6'-7 1/2"	ANTHONY REACH-IN COOLER DOORS (BRUSHED CHROME) FURNISHED & INSTALLED BY FMS.
D8	3'-0" x 7'-0"	ANTHONY STYLELINE HD PLUS ENTRANCE DOOR COOLER DOORS (BRUSHED CHROME) FURNISHED & INSTALLED BY FMS.
D9	5'-0" x 9'-0"	PLASTIC COOLER STRIP CURTAIN

NOTE: ALL INTERIOR AND EXTERIOR DOORS BE PROVIDED WITH EXTERIOR CYLINDERS KEYS TO THE BUILDING MASTER

ROOM FINISH SCHEDULE

ROOM	FLOORING	INTERIOR WALLS	CEILING	CEILING HT.
CASHIER	PORCELAIN TILE-VERANDA LEATHER (P506) 20" X 20" W/ GROUT #185 NEW TAUPE BY CUSTOM BUILDING PRODUCTS, WITH JOHNSONITE 4" RUBBER COVE BASE #69 STERLING SILVER.	20 GA. STEEL PRE-FINISHED SMOOTH WHITE ACRYLIC PANELS	USG - RADAR #2310 (CLASS-A FIRE RATED) IN SUSPENDED CEILING (FLAME SPREAD INDEX-25, SMOKE DEVELOPED-50)	10'-0"
RESTROOMS (WOMEN'S, MEN'S)	MARAZZI COLOR BODY PORCELAIN RIFLESSI DE LEGNO, USN, 12"x24" WALNUT TILE W/ LATICRETE SPECTRALOCK GROUT #66 CHESTNUT BROWN. PROVIDE COVE BASE - SCHLUTER DILEX-EHK OR EQUAL	DALTEC MODEL #LW02121HD1P6 CATALINA CANYON 12" X 12" PORCELAIN TILE EPOXY GROUT TO UNDERSIDE OF CEILING - #185 NEW TAUPE EHK OR EQUAL	WHITE ACRYLIC PANELS 20 GA. STEEL PRE-FINISHED SMOOTH (BY OTHERS) (FLAME SPREAD INDEX-25, SMOKE DEVELOPED-85)	8'-8"
HALLWAY	PORCELAIN TILE-VERANDA LEATHER (P506) 20" X 20" W/ GROUT #185 NEW TAUPE BY CUSTOM BUILDING PRODUCTS, WITH JOHNSONITE 4" RUBBER COVE BASE #69 STERLING SILVER	20 GA. STEEL PRE-FINISHED SMOOTH WHITE ACRYLIC PANEL	USG - RADAR #2310 (CLASS-A FIRE RATED) IN SUSPENDED CEILING (FLAME SPREAD INDEX-25, SMOKE DEVELOPED-50)	9'-0"
UTILITY/OFFICE	12" X 12" VINYL TILE #TC-557 SHOOTING STAR BY AMERICAN TILE INC WITH JOHNSONITE 4" RUBBER COVE BASE #69 STERLING SILVER	20 GA. STEEL PRE-FINISHED EMBOSSED WHITE ACRYLIC PANELS	SHEETROCK BRAND CLIMAPLUS LAY-IN CEILING PANEL VINYL #3270 IN DONN BRAND CE SUSPENDED CEILING 2" X 4" LAY-IN CEILING TILE W/WHITE GRID (FLAME SPREAD INDEX-25, SMOKE DEVELOPED-50)	9'-0"
SALES	PORCELAIN TILE-VERANDA LEATHER (P506) 20" X 20" W/ GROUT #185 NEW TAUPE BY CUSTOM BUILDING PRODUCTS, WITH JOHNSONITE 4" RUBBER COVE BASE #69 STERLING SILVER.	20 GA. STEEL PRE-FINISHED SMOOTH WHITE ACRYLIC PANEL	USG - RADAR #2310 (CLASS-A FIRE RATED) IN SUSPENDED CEILING (FLAME SPREAD INDEX-25, SMOKE DEVELOPED-50)	10'-0"
BEER COOLER	PORCELAIN TILE-VERANDA LEATHER (P506) 20" X 20" W/ GROUT #185 NEW TAUPE BY CUSTOM BUILDING PRODUCTS, WITH JOHNSONITE 4" RUBBER COVE BASE #69 STERLING SILVER.	20 GA. STEEL PRE-FINISHED EMBOSSED WHITE ACRYLIC PANELS. (BY COOLER MANUFACTURER) (FLAME SPREAD INDEX-0, SMOKE DEVELOPED-85)	WHITE ACRYLIC PANELS 20 GA. STEEL PRE-FINISHED EMBOSSED (BY COOLER MANUFACTURER) (FLAME SPREAD INDEX-0, SMOKE DEVELOPED-85)	9'-0"
REACH-IN COOLER	SW-ARMORSEAL 1000 HS (B67 A 2001 AND B67 V 2002) DARK GREY SEALER CONCRETE	20 GA. STEEL PRE-FINISHED EMBOSSED WHITE ACRYLIC PANELS. (BY COOLER MANUFACTURER) (FLAME SPREAD INDEX-0, SMOKE DEVELOPED-85)	WHITE ACRYLIC PANELS 20 GA. STEEL PRE-FINISHED EMBOSSED (BY COOLER MANUFACTURER) (FLAME SPREAD INDEX-0, SMOKE DEVELOPED-85)	9'-0"

NOTE: THE CEILING GRID/TILES ARE TO BE INSTALLED PER ASTM C635, C636 AND E580 IN ACCORDANCE WITH THE SEISMIC DESIGN CATEGORY LISTED ON DWG 51.

GLASS SCHEDULE

MARK	SIZE		DESCRIPTION	QTY.
	WIDTH	HEIGHT		
G1	3'-7"	5'-0"		2
G2	2'-9"	8'-4"		1
G3	3'-11 1/4"	8'-4"	1" TEMPERED, INSULATED GLASS W/2X4" BLACK ALUMINUM SASH STOREFRONT SYSTEM BY KAWNEER OR EQUAL (U=0.388; SHGC=0.28, V=0.37)	3
G4	1'-7 3/4"	8'-4"		1
G5	3'-4"	8'-4"		1
G6	6'-0 1/2"	1'-4"		1
G7	4' 1 1/4"	8'-4"		2
G8	10"	8'-4"		2
G9	3'-0"	1'-4"		1
G10	1'-6"	8'-4"		1
G11	4'-8"	6'-4"	1" TEMPERED, INSULATED GRAYLITE II - CLEAR BY VITRO OR EQUAL W/2X4" BLACK ALUMINUM SASH STOREFRONT SYSTEM BY KAWNEER OR EQUAL (U=0.388; SHGC=0.28, V=0.37)	7

NOTE: ALL GLASS SUPPLIED AND INSTALLED BY FMS

GreenbergFarrow
251 West 30th Street
10th Floor
New York, New York 10001
t: 917.689.2729

COPYRIGHT NOTICE
This drawing is the property of the above referenced Professional and is not to be used for any purpose other than the specific project and site named herein, and cannot be reproduced in any manner without the express written permission from the Professional.

ISSUE RECORD

DATE	REV.	DESCRIPTION
10/28/2020	1	PERMIT SUBMISSION SET
05/28/2021	4	REVISED PERMIT SET
04/04/2022	4	REVISED PER PLANNING COMMENTS

PROFESSIONAL SEAL

SCOTT LONKITS
MICHAEL J. ARCHITECT

PROFESSIONAL IN CHARGE
SCOTT LONKITS

PROJECT MANAGER
MUDHA CHAWATHE

QUALITY CONTROL
CHRIS CERBO

DRAWN BY
SS

PROJECT NAME
MURPHY EXPRESS

MURPHY OIL CONVENIENCE STORE
SOUTH PARKER RD, PARKER COLORADO 80138

FREY MOSS STRUCTURE

1801 Rockdale Industrial Blvd.
Conkles, Georgia 30012
Voice: (800) 366-6385
Fax: (770) 483-6037

FMS JOB NUMBER
G20MU00117

FMS MODEL NUMBER
XXXXXX

PROJECT NUMBER
20170437.5

SHEET TITLE
FLOOR PLAN

SHEET NUMBER
E3

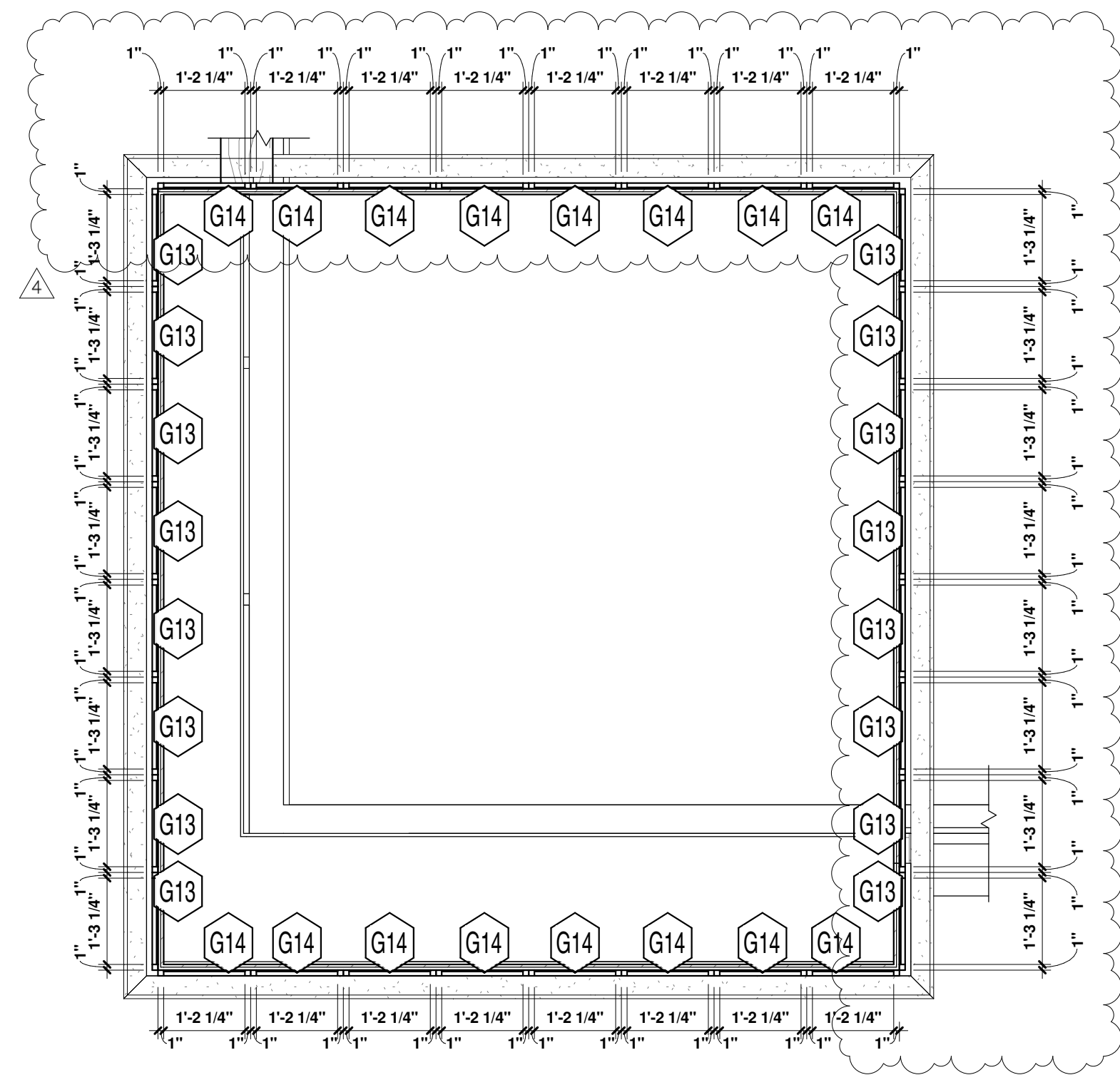
PROTO V2.0 11/01/2019

COPYRIGHT NOTICE

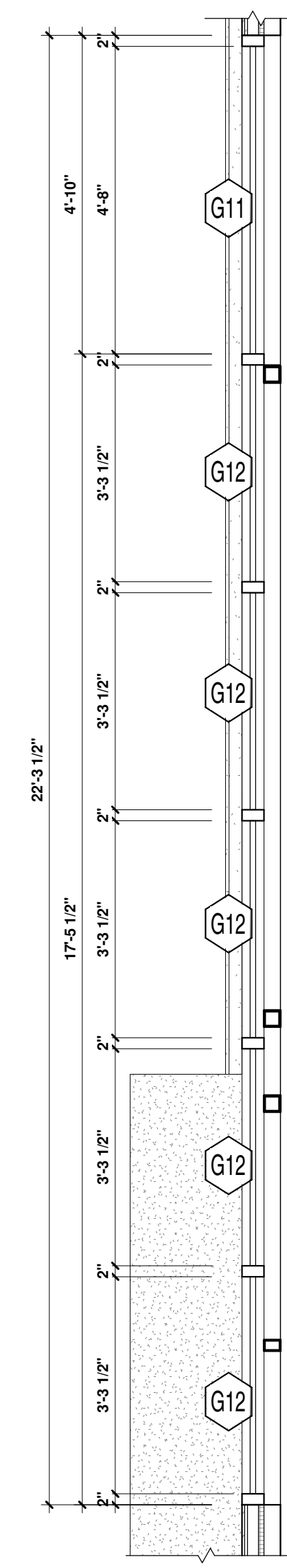
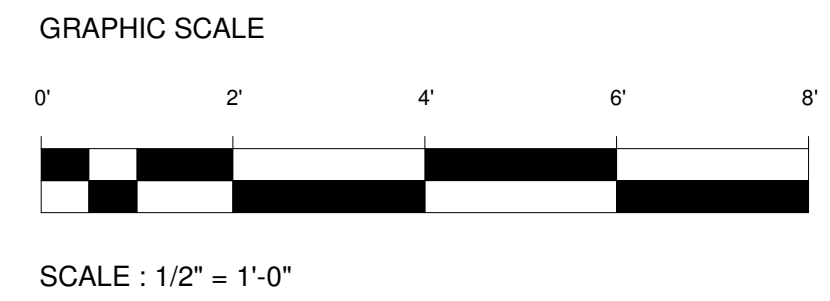
This drawing is the property of the above referenced Professional and is not to be used for any purpose other than the specific project and site named herein, and cannot be reproduced in any manner without the express written permission from the Professional.

ISSUE RECORD

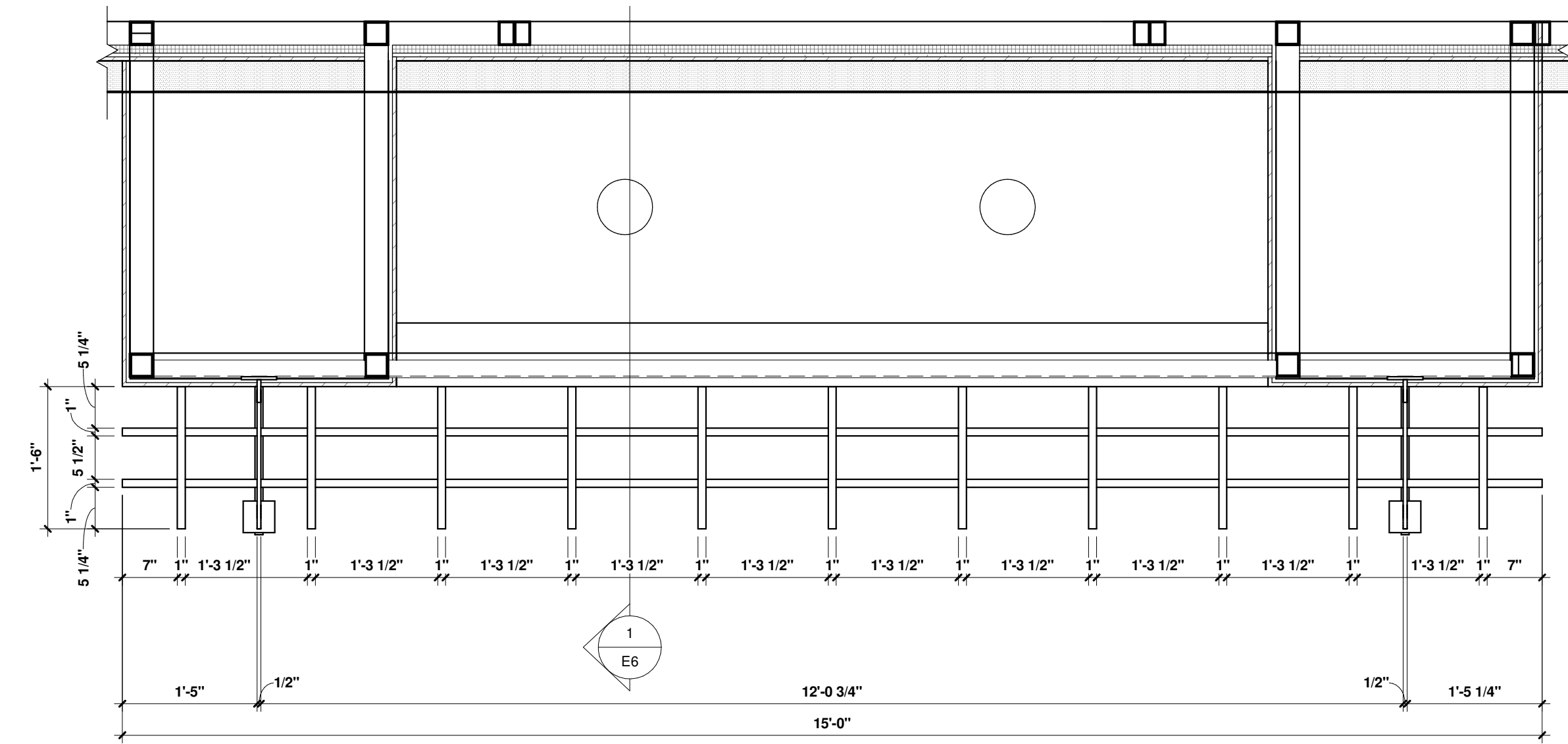
DATE	REV.	DESCRIPTION
05/28/2021	1	REVISED PERMIT SET
06/04/2022	4	REVISED PER PLANNING COMMENTS



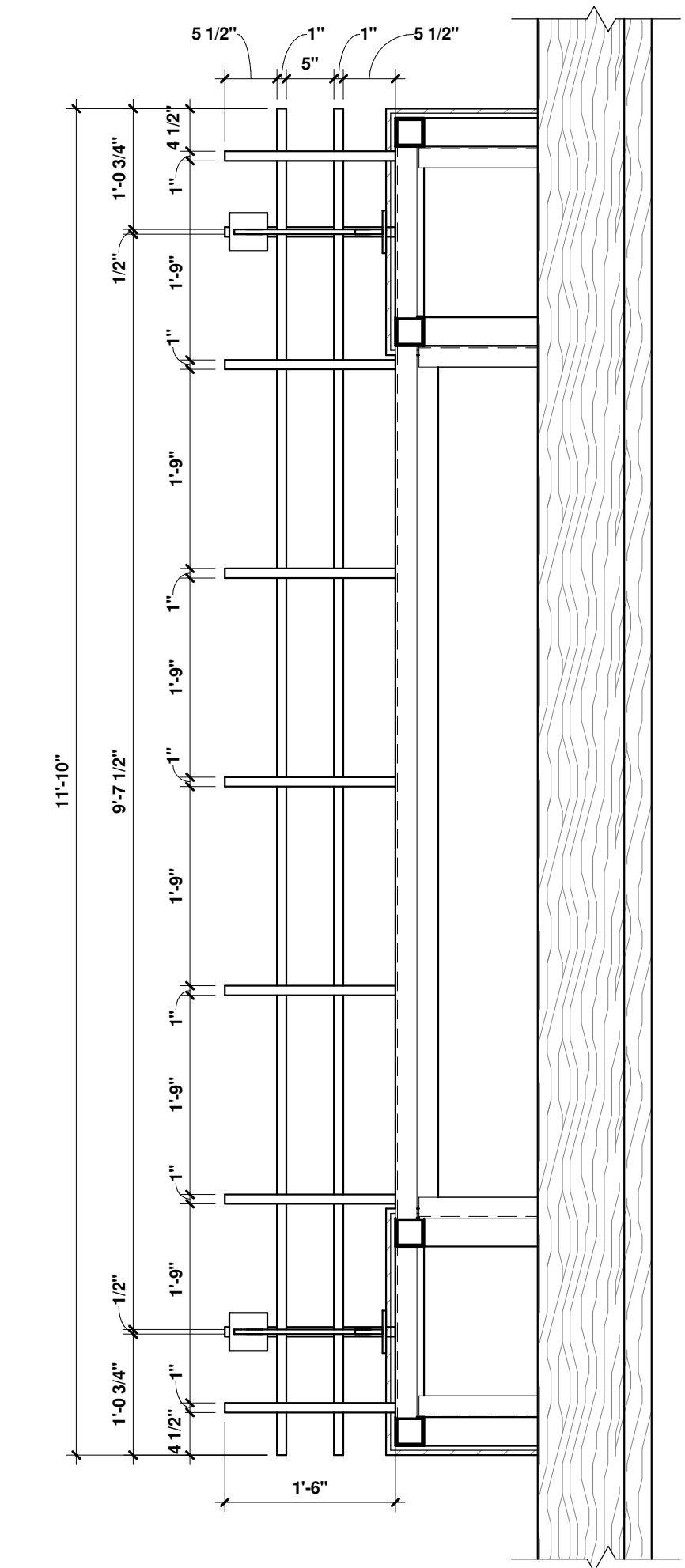
1 CORNER DETAIL @ 17'-0" AFF
1/2" = 1'-0"



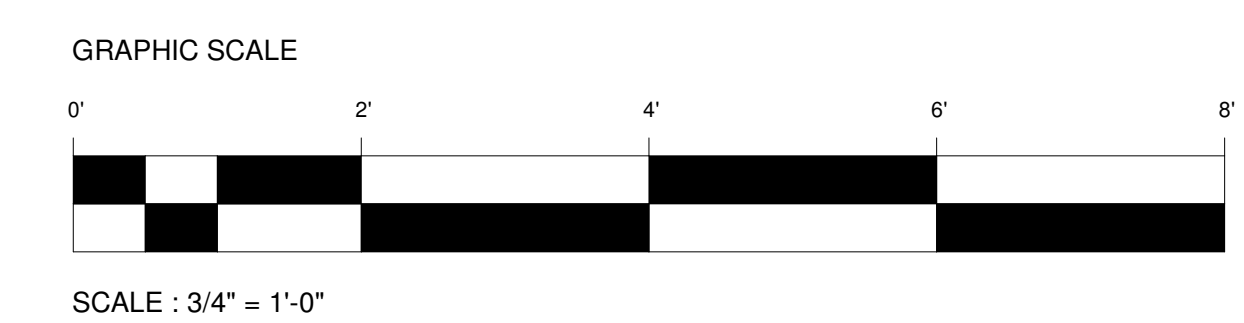
2 FLOOR PLAN DETAIL @ 8'-0" AFF
1/2" = 1'-0"



3 METAL AWNING DETAIL @ FRONT ENTRY DOOR
3/4" = 1'-0"



4 METAL AWNING @ SIDE EXIT DOOR
3/4" = 1'-0"



GLASS SCHEDULE				
MARK	SIZE		DESCRIPTION	QTY.
	WIDTH	HEIGHT		
G12	3'-3 1/2"	1'-11 1/2"	1" TEMPERED, INSULATED GLAZYTE II - CLEAR BY VITRO OR EQUAL W/2"x4" BLACK ALUMINUM SASH STOREFRONT SYSTEM BY KAWNEER OR EQUAL (U=0.388; SHGC=0.28, V=0.37)	5
G13	1'-3 1/4"	1'-4"		16
G14	1'-2 1/4"	1'-4"		16

PROFESSIONAL SEAL



8.4.22

PROFESSIONAL IN CHARGE

SCOTT LONITS

PROJECT MANAGER

MUGHA CHAWATHE

QUALITY CONTROL

CHRIS CERDO

DRAWN BY

SS

PROJECT NAME

MURPHY EXPRESS
MURPHY OIL CONVENIENCE STORE

SOUTH PARKER RD, PARKER COLORADO 80138

FREY MOSS STRUCTURE

1801 Rockdale Industrial Blvd.
Conyers, Georgia 30012
Voice: (800) 366-6385
Fax: (770) 483-6037

FMS JOB NUMBER: G20MU00117
FMS MODEL NUMBER: XXXXXX

PROJECT NUMBER
20170437.5

SHEET TITLE

PLAN DETAILS

SHEET NUMBER

E3.1

COPYRIGHT NOTICE
This drawing is the property of the above referenced Professional and is not to be used for any purpose other than the specific project and site named herein, and cannot be reproduced in any manner without the express written permission from the Professional.

ISSUE RECORD	
DATE	REV. DESCRIPTION
10/23/2020	PERMIT SUBMISSION SET
05/28/2021	1 REVISED PERMIT SET
06/04/2022	4 REVISED SET PER PLANNING COMMENTS

PROFESSIONAL SEAL



PROFESSIONAL IN CHARGE

M. YOUNG
PROJECT MANAGER
M. YOUNG
QUALITY CONTROL
B. McGLADE
DRAWN BY
D. MAHONEY

PROJECT NAME



MURPHY OIL CONVENIENCE STORE
12045 SOUTH PARKER RD,
PARKER
COLORADO 80138



1801 Rockdale Industrial Blvd.
Conyers, Georgia 30012
Voice: (800) 366-6385
Fax: (770) 483-6037
FMS JOB NUMBER
G20MU00117
FMS MODEL NUMBER
XXXXXX

PROJECT NUMBER
20170437.5

SHEET TITLE

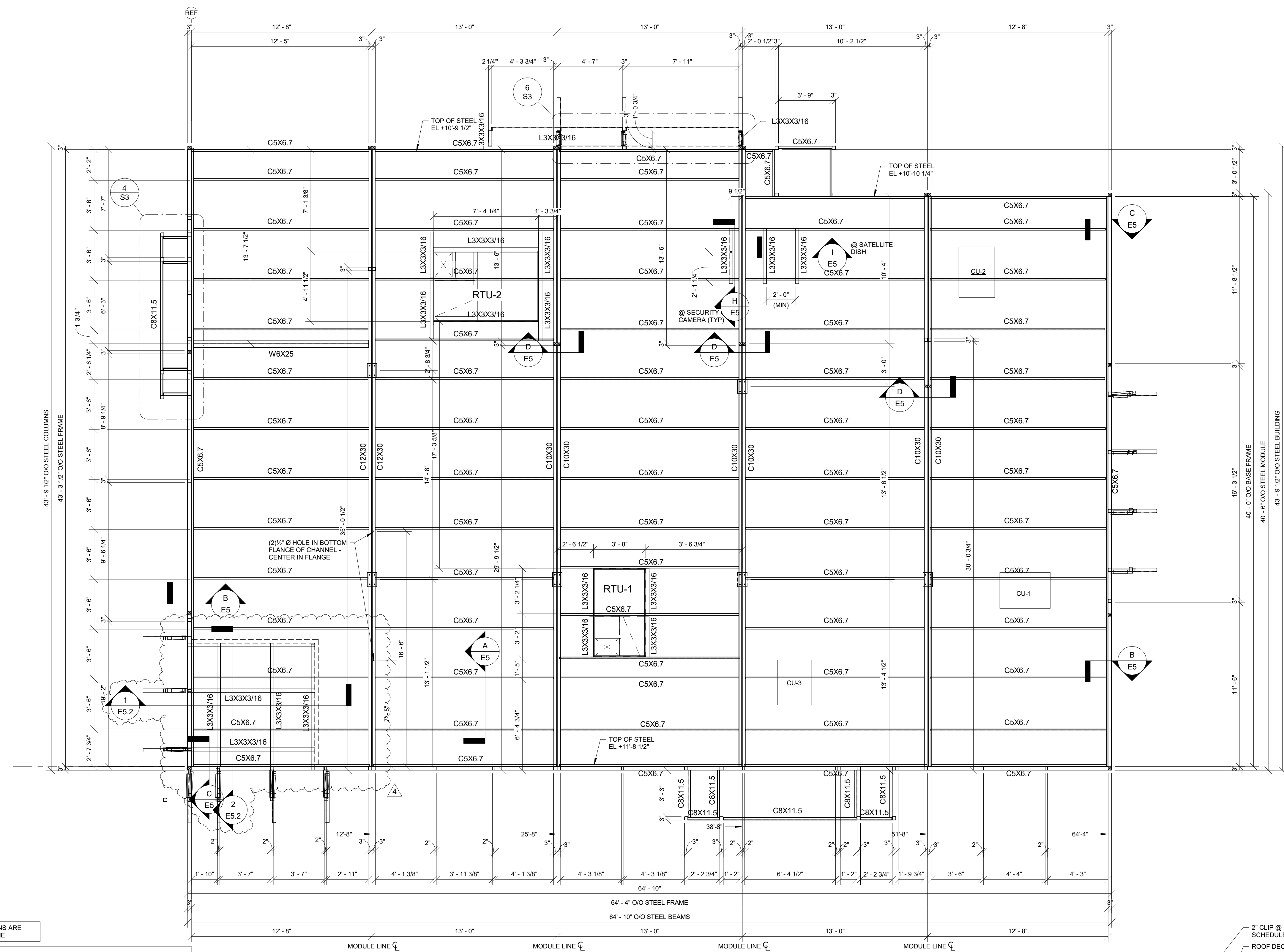
ROOF FRAMING PLAN

SHEET NUMBER

E5

BAKER, INGRAM, & ASSOCIATES
STRUCTURAL ENGINEERS

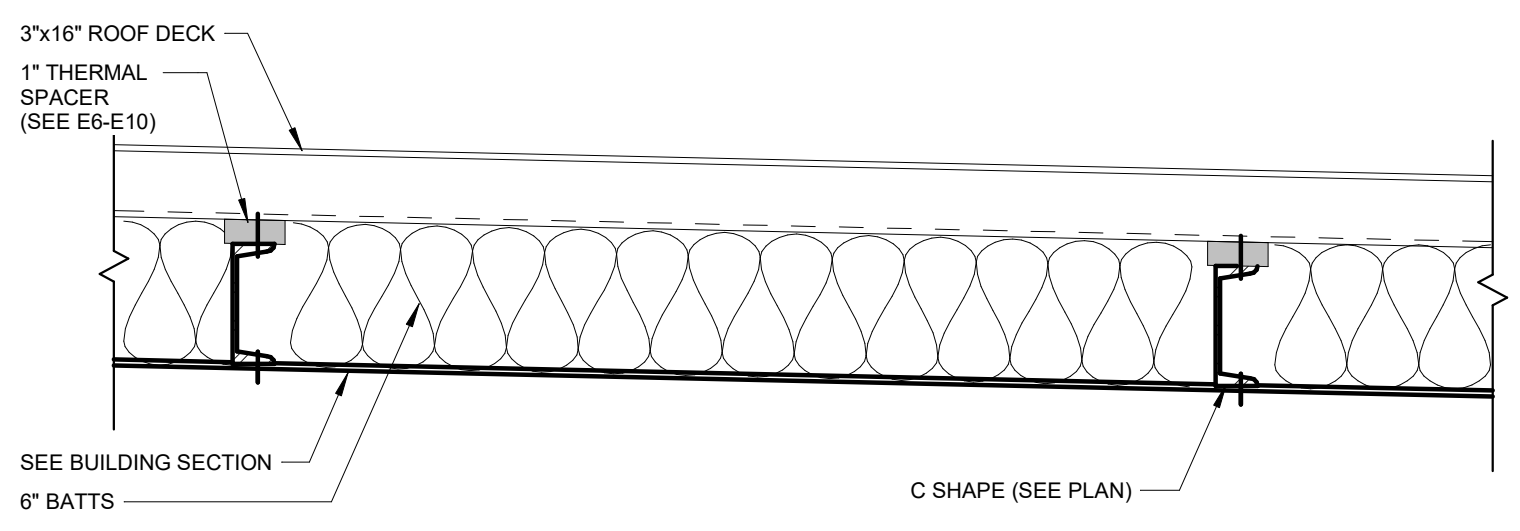
TWO WHITE HORSE PIKE HADDON HEIGHTS, NJ 08035
(856) 310-1491 fax: (856) 310-1829



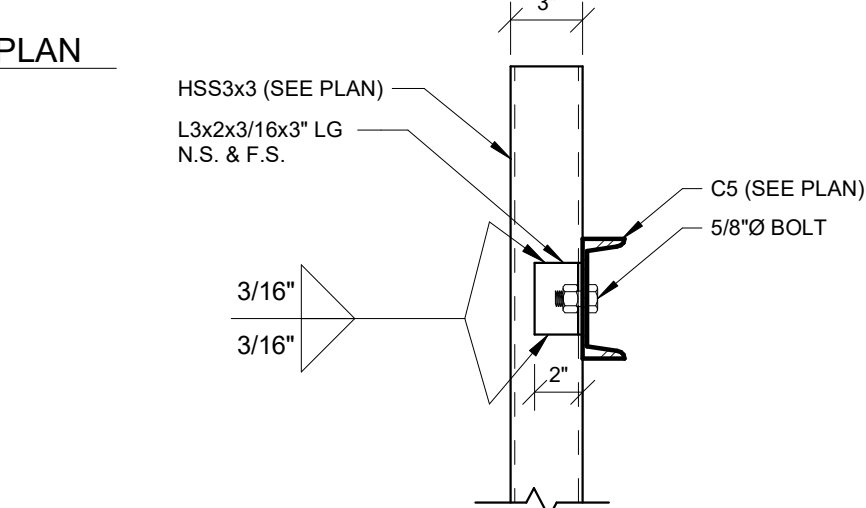
NOTE: ALL PULL DIMENSIONS ARE FROM FACE OF BLDG FRAME

FRAMING PLAN NOTES:
1. SEE SHEET S1 FOR STRUCTURAL GENERAL NOTES.
2. ALL ELEVATIONS REFERENCED FROM FINISH FLOOR ELEVATION = 0'-0" FOR REFERENCE ONLY. SEE CIVIL FOR ACTUAL FINISH FLOOR ELEVATION.
3. BOLTS SHALL BE 5/8"x1 1/2" LG (M. BOLTS) (GRADE A307 U.N.O.).
4. FOR ROOF DECK REQUIREMENTS, SEE SCHEDULE ON S1. (SEE E6-E10 FOR ADDL INFO).
5. SEE SHEET E5.1 FOR PARAPET KICKER INFO.

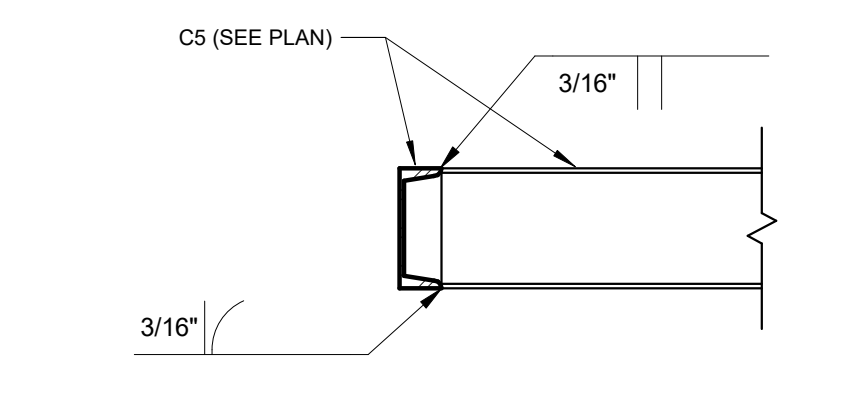
- DENOTES HSS LIFTING COLUMN
- DENOTES HSS 3 x 3 x 3/16" COLUMN
- DENOTES TS 3 x 3 x 14GA COLUMN
- DENOTES TS 3 x 2 x 14GA COLUMN
- DENOTES STL ANGLE 3 x 3 x 3/16"



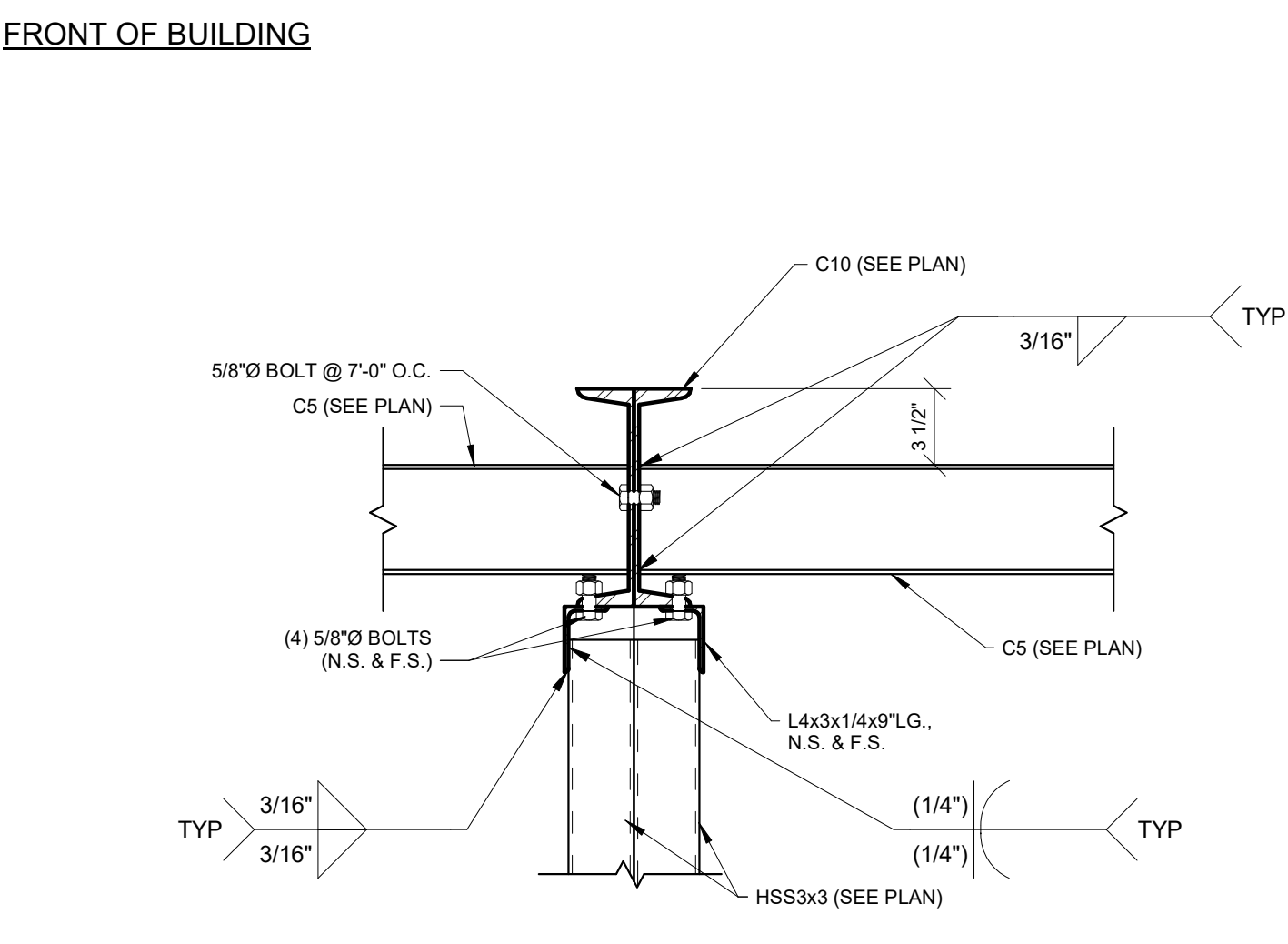
A ROOF SECTION A
1 1/2" = 1'-0"



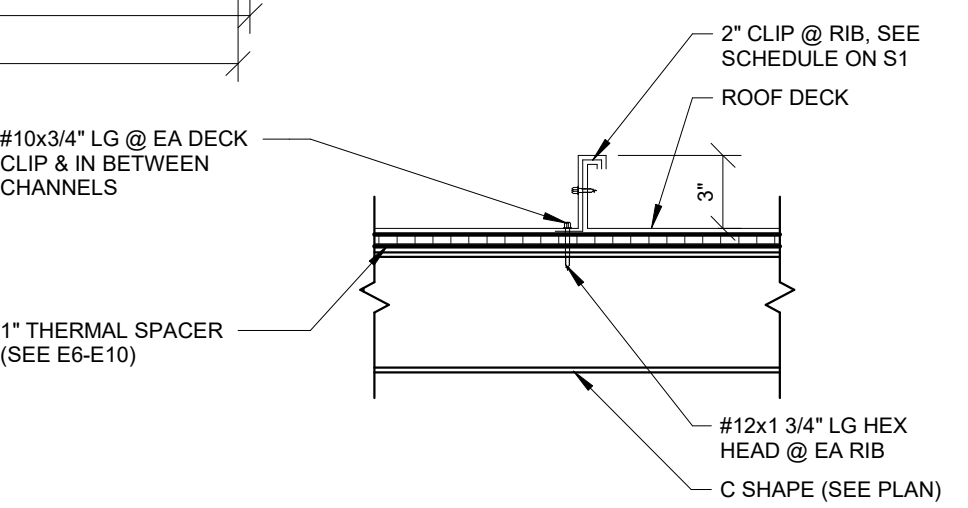
B ROOF SECTION B
1 1/2" = 1'-0"



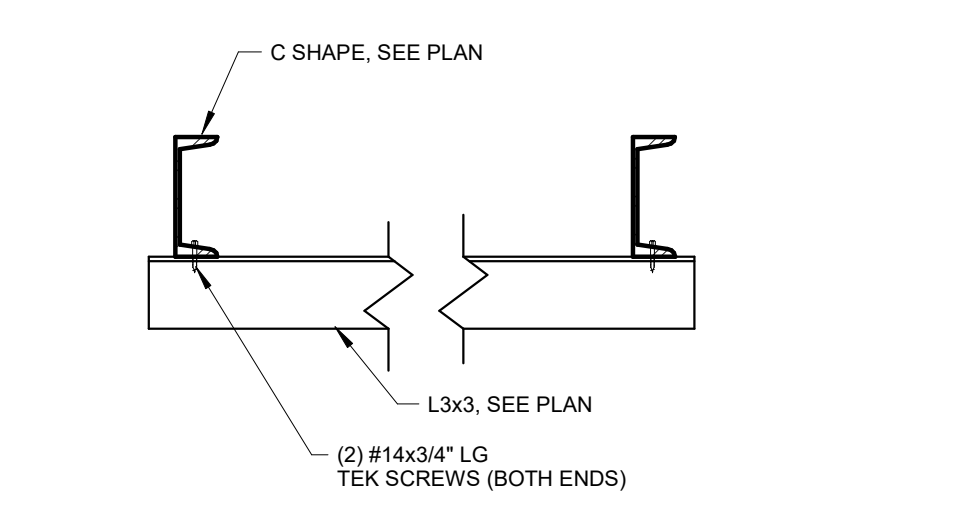
C ROOF SECTION C
1 1/2" = 1'-0"



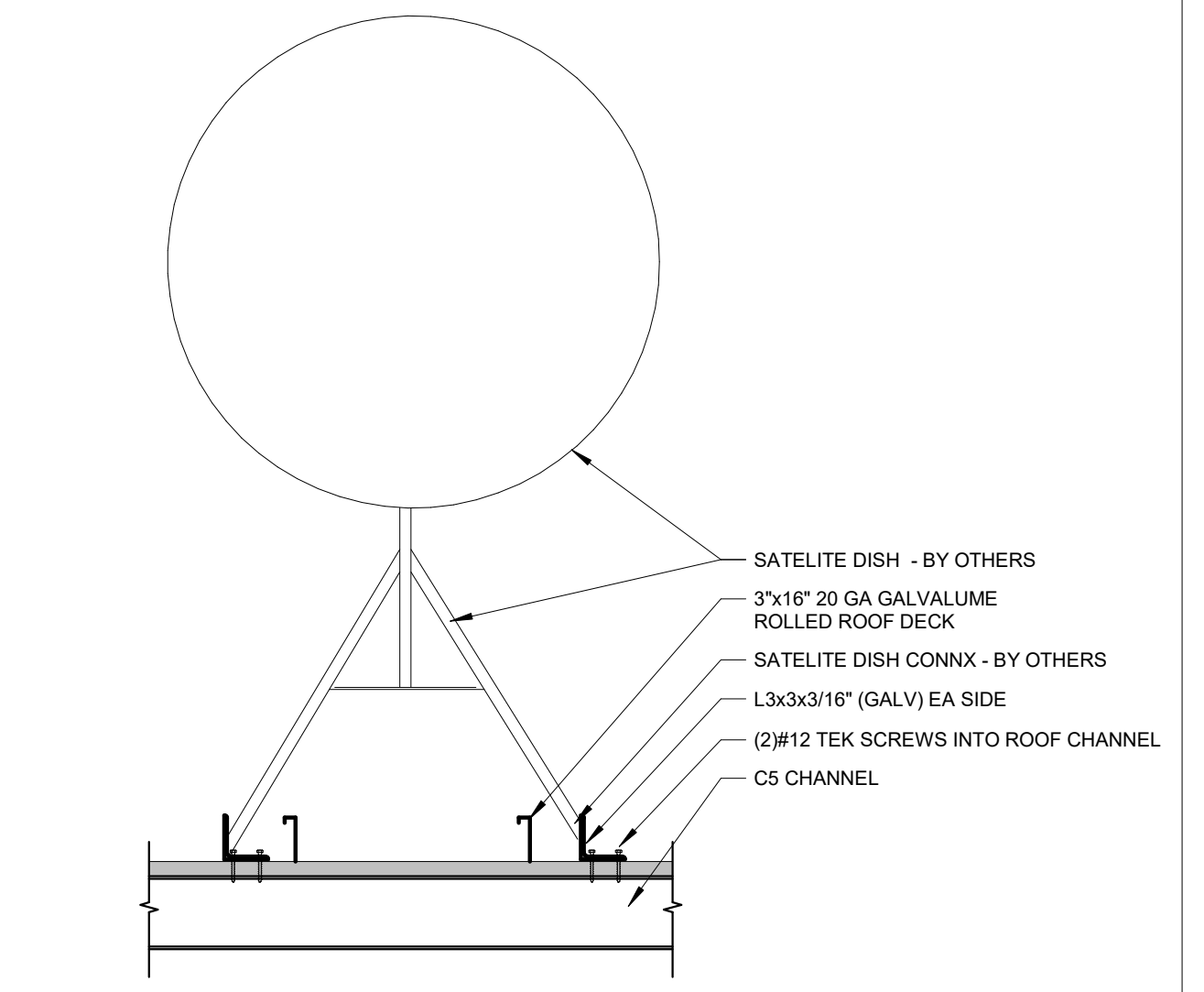
D ROOF SECTION D
1 1/2" = 1'-0"



E ROOF SECTION E
1 1/2" = 1'-0"



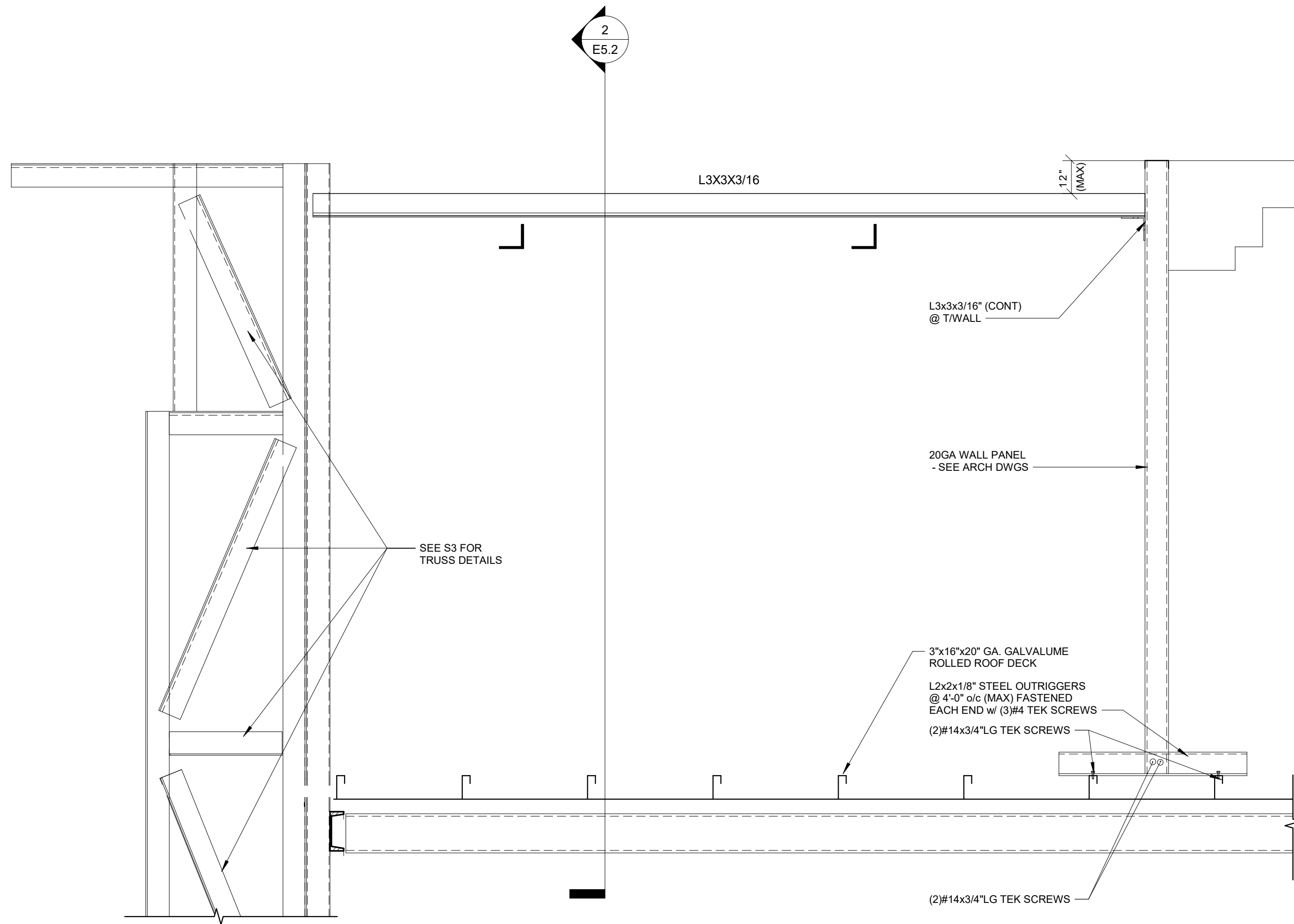
H SECTION AT SECURITY CAMERAS FRAMING
1 1/2" = 1'-0"



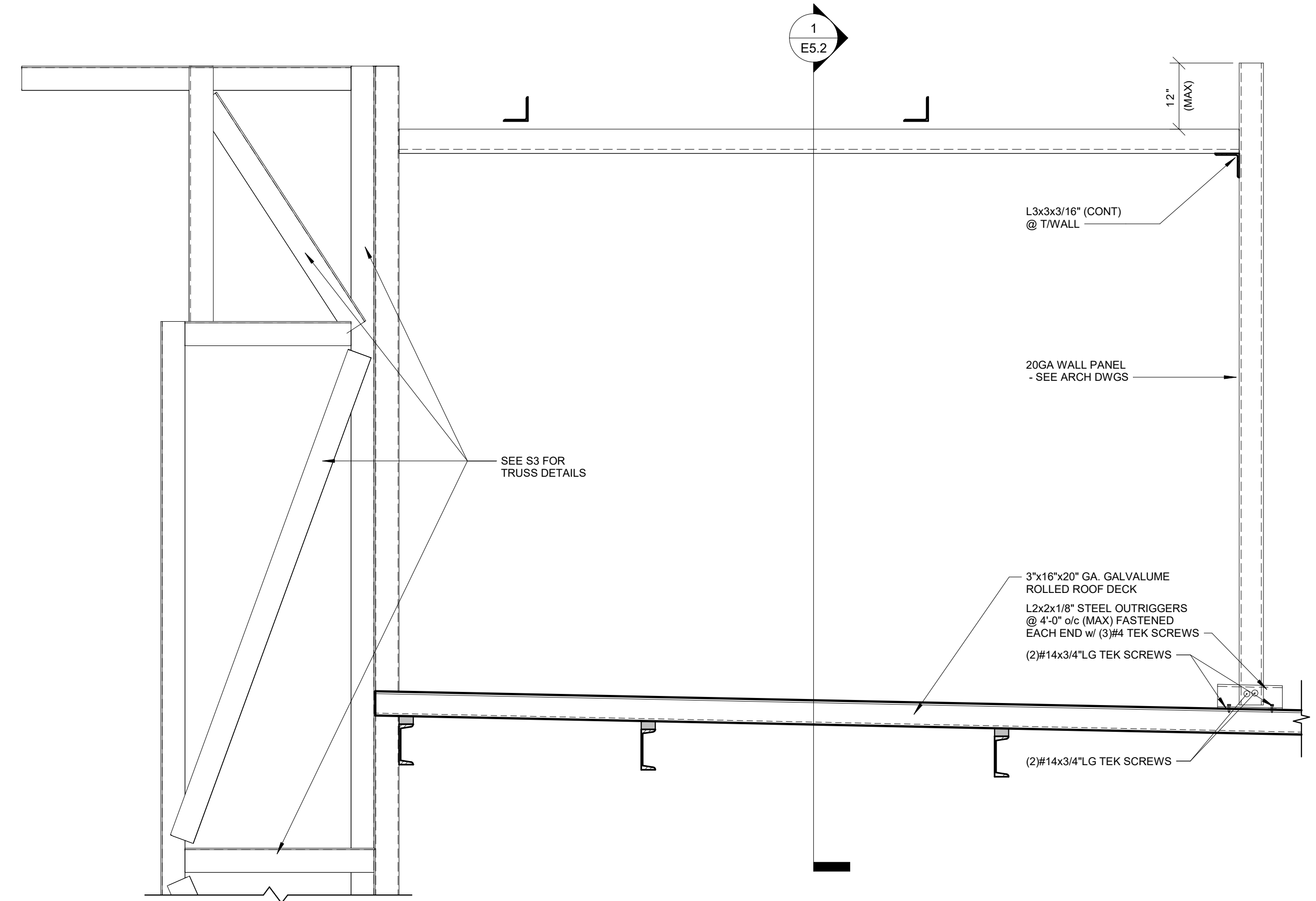
I SATELLITE DISH CONNX DETAIL
1" = 1'-0"

COPYRIGHT NOTICE
This drawing is the property of the above referenced Professional and is not to be used for any purpose other than the specific project and site named herein, and cannot be reproduced in any manner without the express written permission from the Professional.

ISSUE RECORD	
DATE	REV. DESCRIPTION
08/04/2022	4 REVISED SET PER PLANNING COMMENTS



1 SECTION @ SIDE TOWER
1" = 1'-0"



2 SECTION @ SIDE TOWER
1" = 1'-0"

PROFESSIONAL SEAL



PROFESSIONAL IN CHARGE
M YOUNG

PROJECT MANAGER
M YOUNG

QUALITY CONTROL
B McGLADE

DRAWN BY
D MAHONEY

PROJECT NAME

MURPHY EXPRESS

MURPHY OIL CONVENIENCE STORE
12045 SOUTH PARKER RD,
PARKER
COLORADO 80138

FREY MOSS
STRUCTURE

1801 Rockdale Industrial Blvd.
Conyers, Georgia 30012
Voice: (800) 366-6385
Fax: (770) 483-6037
FMS JOB NUMBER
G20MU00117
FMS MODEL NUMBER
XXXXXX

PROJECT NUMBER
20170437.5

SHEET TITLE

SIDE TOWER DETAILS

SHEET NUMBER

E5.2

PROTO V2.0 11/01/2019

BAKER, INGRAM, & ASSOCIATES
STRUCTURAL ENGINEERS

TWO WHITE HORSE PIKE HADDON HEIGHTS, NJ 08035
(856) 310-1491 fax: (856) 310-1829

