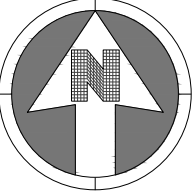


KEY MAP
NOT TO SCALE



30 0 30
SCALE: 1" = 30'

NOTES:
1. SEE LANDSCAPE PLAN SHEET FOR DETAILED LANDSCAPING INFORMATION.

LEGEND:
 TRAFFIC FLOW ARROW
 CENTER LINE OF DRIVE

LANDSCAPE PROPERTIES	AREA (SF)	PERCENT LANDSCAPED
TOTAL SITE DISTURBANCE	280,221	
TOTAL LANDSCAPE AREA	56,682	20.2%
TOTAL HARDSCAPED AREA	165,465	
BUILDING AREA	23,288	

PARKING COUNT AND REQUIREMENTS

STANDARD	PROPOSED	REQUIRED	CALCULATION
STANDARD	423	295	88,291 / 300 = 294.3
HANDICAP	9	9	
BIKE	22	10	(88,291 / 10,000) * 2 = 18
TOTAL	454	387	(NOT TO EXCEED 10)

PARKER PROJECT NUMBER
SP18-081

DATE
06/15/2020

REVISION	DESCRIPTION	DATE
0	INITIAL SUBMITTAL TO TOWN	8/8/18
1	REVISED SUBMITTAL TO TOWN	11/26/18
2	THIRD SUBMITTAL TO TOWN	07/31/19
3	FOURTH SUBMITTAL TO TOWN	09/13/19
4	FIFTH SUBMITTAL TO TOWN	10/30/19
5	SIXTH SUBMITTAL TO TOWN	06/15/20



S.A. MIRO, INC.
CONSULTING ENGINEERS
4582 South Ulster Street Pkwy.
Suite 750 Denver, CO 80237
ph. 303 741 3737
fax 303 694 3134

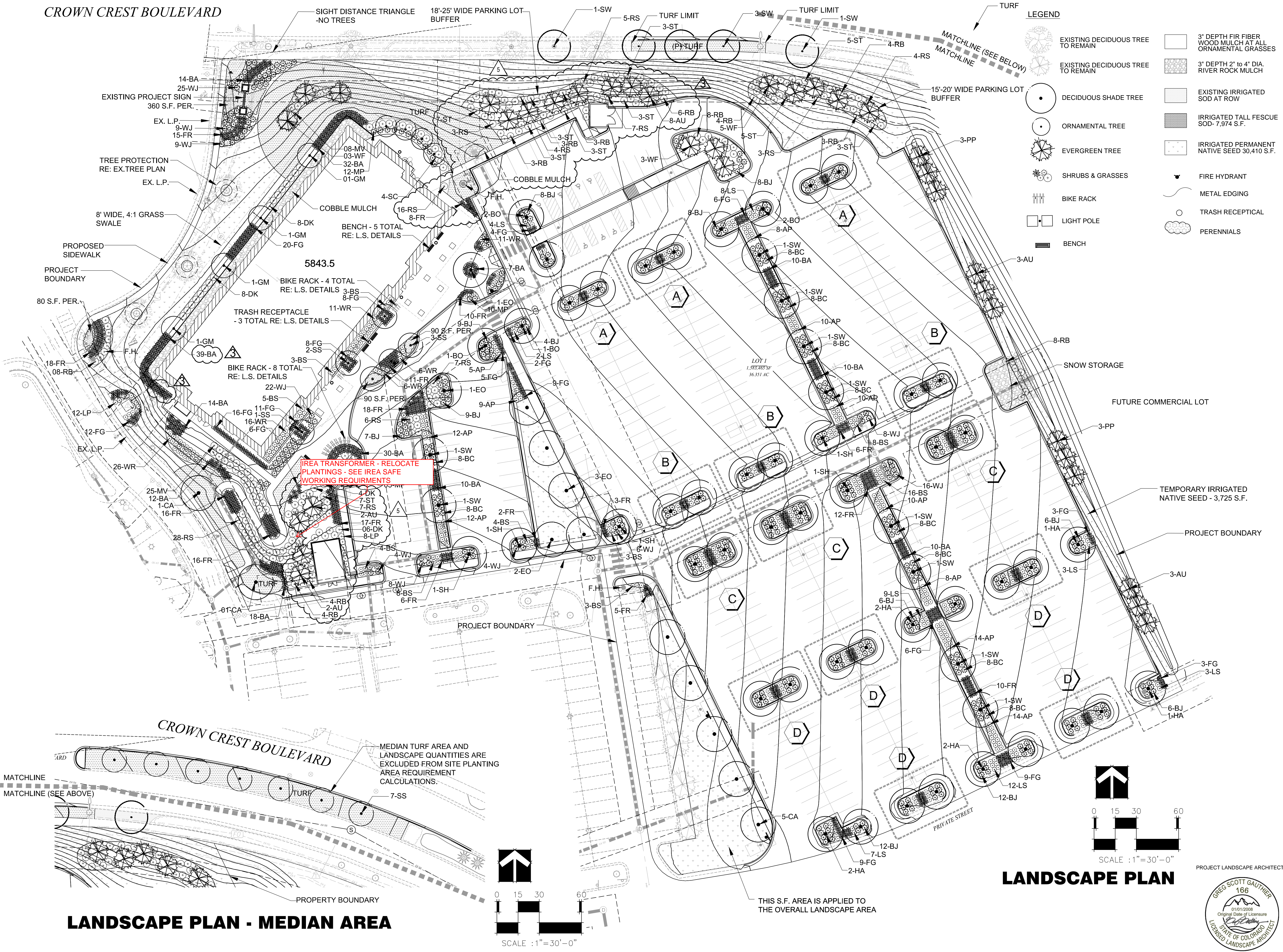
PROJECT
Parker Adventist Hospital MOB III
9403 CROWN CREST BLVD.
PARKER, COLORADO
80138

SITE PLAN AMENDMENT

SHEET TITLE
SITE PLAN

SHEET NUMBER
2 OF 12

CROWN CREST BOULEVARD



LEGEND

- EXISTING DECIDUOUS TREE TO REMAIN
- EXISTING DECIDUOUS TREE TO REMAIN
- DECIDUOUS SHADE TREE
- ORNAMENTAL TREE
- EVERGREEN TREE
- SHRUBS & GRASSES
- BIKE RACK
- LIGHT POLE
- BENCH
- 3" DEPTH FIR FIBER WOOD MULCH AT ALL ORNAMENTAL GRASSES
- 3" DEPTH 2" TO 4" DIA RIVER ROCK MULCH
- EXISTING IRRIGATED SOD AT ROW
- IRRIGATED TALL FESCUE SOD- 7,974 S.F.
- IRRIGATED PERMANENT NATIVE SEED 30,410 S.F.
- FIRE HYDRANT
- METAL EDGING
- TRASH RECEPTACLE
- PERENNIALS

PARKER PROJECT NUMBER
SP18-081

DATE
6/15/2020

DESCRIPTION	DATE
0 INITIAL SUBMITTAL TO TOWN	8/8/18
1 REVISED SUBMITTAL TO TOWN	11/26/18
2 THIRD SUBMITTAL TO TOWN	07/31/19
3 FOURTH SUBMITTAL TO TOWN	09/13/19
4 FIFTH SUBMITTAL TO TOWN	10/30/19
5 SIXTH SUBMITTAL TO TOWN	06/15/20



19 SOUTH TEJON ST., SUITE 300
 COLORADO SPRINGS, CO. 80903
 TELE. 719-471-7566
 FAX: 719-471-1174
 www.rtaarchitects.com

GROUND LOGIC INC.
 LANDSCAPE ARCHITECTURE
 IRRIGATION DESIGN
 SITE DESIGN & GIS

GROUND LOGIC, INC.
 2038 Grove Street
 Boulder, Colorado 80302
 P. 720-331-0696
 greg@groundlogic.com

PROJECT
Parker Adventist Hospital MOB III

9403 CROWN CREST BLVD.
 PARKER, COLORADO
 80138

SITE PLAN AMENDMENT

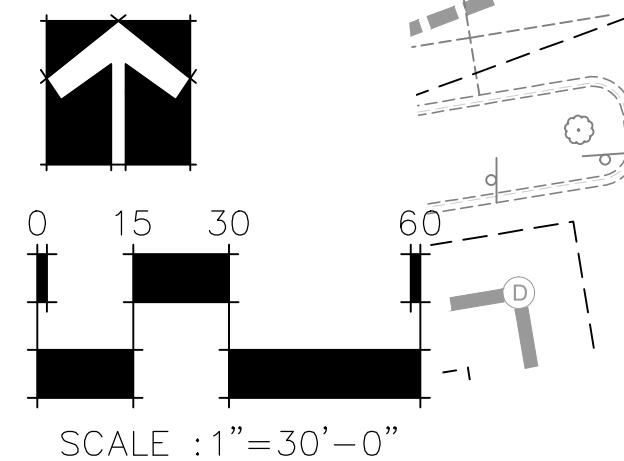
SHEET TITLE
LANDSCAPE PLAN

SHEET NUMBER

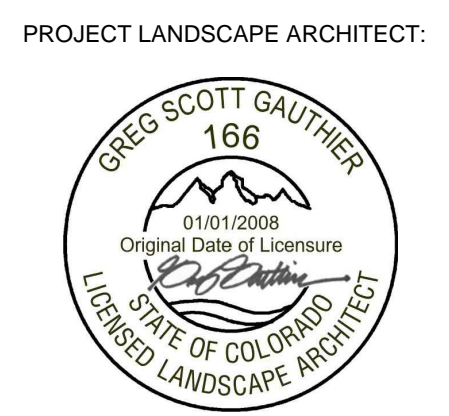
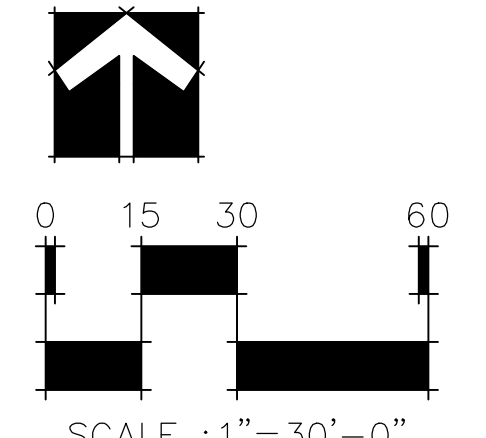
4 OF 12

BM 380: \\Parker MOB III\Parker MOB III_ReDesign_C_S_ARCH_V19.rvt
 7/15/2019 3:03:26 PM

LANDSCAPE PLAN - MEDIAN AREA



LANDSCAPE PLAN



THIS S.F. AREA IS APPLIED TO THE OVERALL LANDSCAPE AREA

MEDIAN TURF AREA AND LANDSCAPE QUANTITIES ARE EXCLUDED FROM SITE PLANTING AREA REQUIREMENT CALCULATIONS.

AREA TRANSFORMER - RELOCATE PLANTINGS - SEE AREA SAFE WORKING REQUIREMENTS