

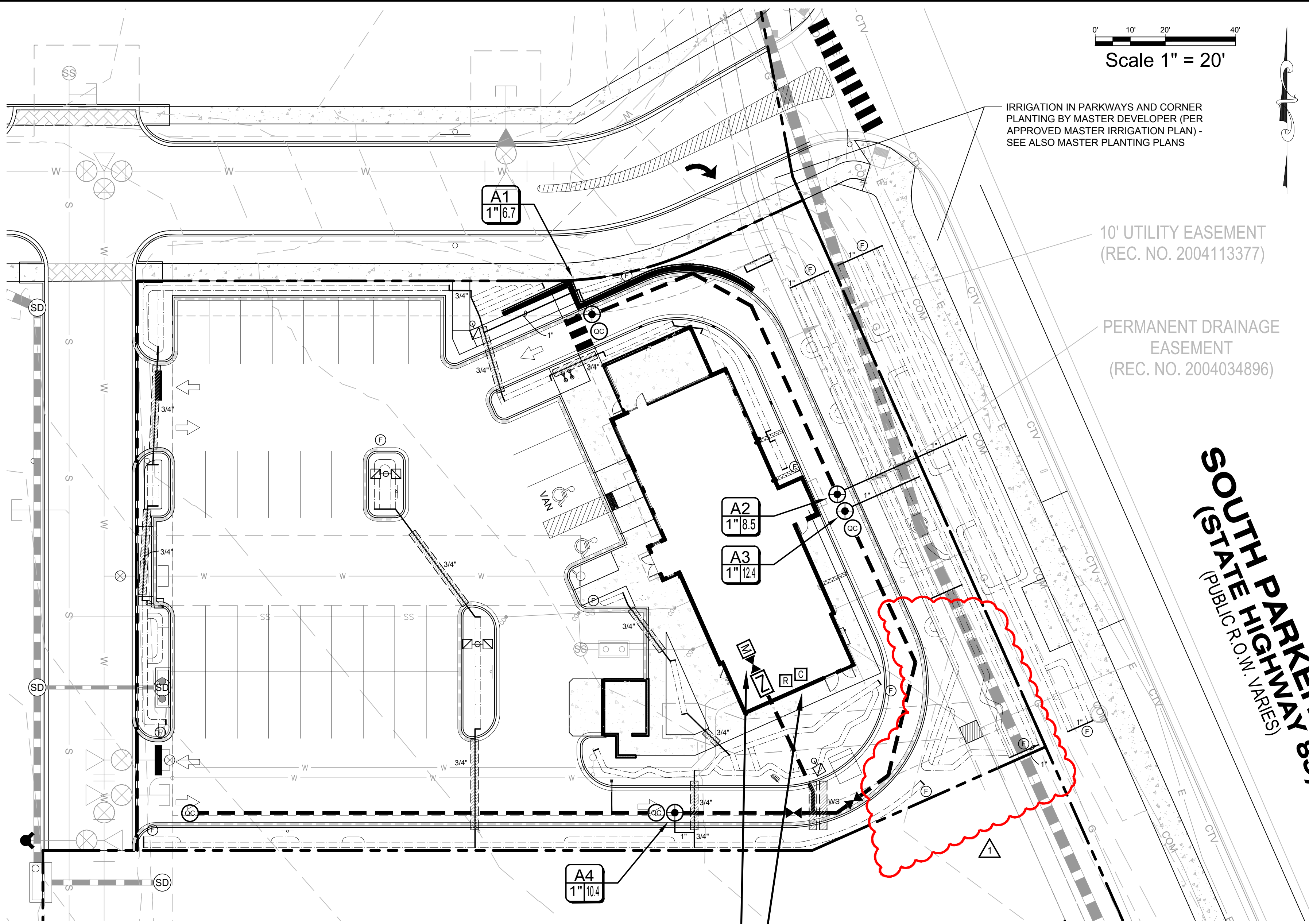
Scale 1" = 20'

IRRIGATION IN PARKWAYS AND CORNER PLANTING BY MASTER DEVELOPER (PER APPROVED MASTER IRRIGATION PLAN) - SEE ALSO MASTER PLANTING PLANS

10' UTILITY EASEMENT (REC. NO. 2004113377)

PERMANENT DRAINAGE EASEMENT (REC. NO. 2004034896)

**SOUTH PARKER ROAD**  
**(PUBLIC R.O.W. VARIES)**



**POINT OF CONNECTION**  
CONNECT MAINLINE DOWNSTREAM OF DEDICATED 3/4" WATER METER (BY OTHERS). VERIFY LOCATION IN FIELD.

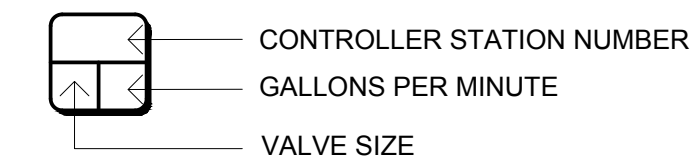
**CONTROLLER NOTE**  
LOCATE CONTROLLER AT LOCATION SHOWN ON PLAN. VERIFY LOCATION IN FIELD WITH OWNER'S REPRESENTATIVE.  
  
120 VAC POWER TO CONTROLLER LOCATION IS NOT WITHIN THE IRRIGATION CONTRACTOR'S SCOPE OF WORK, AND SHALL BE PROVIDED BY OTHERS. HOOK-UP OF CONTROLLER TO 120 VAC SHALL BE PERFORMED BY THE IRRIGATION CONTRACTOR. IRRIGATION CONTRACTOR SHALL COORDINATE LOCATION OF WIRE SLEEVE PENETRATIONS THROUGH BUILDING WITH OWNER AND GENERAL CONTRACTOR. STATION RUN ORDER SHALL MATCH PLANS.

**IRRIGATION LEGEND**

SYMBOL	MANUF.	MODEL NO.	DESCRIPTION	REMARKS/DETAIL
<b>CONTROLLERS AND SENSORS</b>				
C	RAINBIRD	ESP4ME3 w/LNK WIFI MODULE	4-STATION CONTROLLER, INTERIOR/EXTERIOR WALL MOUNT	DETAIL A1-4
R	RAINBIRD	WR2-RFC	RAIN/FREEZE SENSOR - MOUNT SENSOR ON EAVE OR PARAPET PER MANUFACTURER	DETAIL B1-4
<b>POINT OF CONNECTION</b>				
M	---	---	3/4" WATER METER (BY OTHERS)	DETAIL K1-5
Z	FEBCO	MODEL 825YA - 3/4"	BACKFLOW PREVENTER WITH LF850A Y-STRAINER. WALL-MOUNT INSIDE BUILDING.	DETAIL C1-4
<b>VALVES</b>				
+	RAINBIRD	XGZ-100-PRB-COM	DRIP CONTROL ZONE KIT (FLOWS UP TO 20 GPM)	DETAIL D1-4
⊕	RAINBIRD	33DLRC	QUICK COUPLER, 3/4"	DETAIL E1-5
⊗	NIBCO	T-FP-600A	BALL VALVE, BRASS, FULL-PORT, LINE SIZE	DETAIL F1-5
<b>MAIN LINE/LATERALS &amp; SLEEVES</b>				
---	ANY APPROVED	PRESSURIZED PVC MAIN LINE, SCH. 40, 1-1/4"		DETAIL G1-5
---	ANY APPROVED	NON-PRESSURIZED LATERAL LINE, CL. 200 PVC, SIZE AS NOTED ON PLAN		DETAIL G1-5
---	ANY APPROVED	IRRIGATION SLEEVE, SCH. 40 PVC, MIN. TWICE SIZE OF PIPE TO BE INSERTED, ONE SLEEVE PER PIPE		DETAIL G1-5
---	ANY APPROVED	CONTROL WIRING SLEEVE, SCH. 40 PVC, 2"		DETAIL G1-5
<b>DRIP IRRIGATION</b>				
---	RAINBIRD	XFS-06-18	LANDSCAPE DRIP LINE - SPACE LINES AT 18" O.C.	0.6 GPH 20 DETAILS H, I1-5
⊕	ANY APPROVED	---	FLUSH VALVE - BALL VALVE IN VALVE BOX WITH 3' LENGTH OF TUBING	DETAIL J1-5

NOTE: FOR EACH NEW TREE WITHIN AREAS COVERED BY LANDSCAPE DRIP LINE, ADD THREE PC-07 (OR EQUAL) EMITTERS WITH DIFFUSER CAPS, PER DETAILS

**VALVE KEY**



**SLEEVING / WIRING NOTES:**

IN ADDITION TO PROVIDING SLEEVES FOR ALL PIPING UNDER ROADWAYS AND WALKWAYS, THE IRRIGATION CONTRACTOR SHALL PROVIDE AND INSTALL SCH. 40 PVC SLEEVES FOR ALL CONTROLLER WIRES OCCURRING UNDER ALL ROADWAYS AND WALKWAYS. SLEEVES FOR CONTROLLER WIRES SHALL BE 2" DIA. AND CONTAIN NO MORE THAN 25 WIRES.

**IRRIGATION DISCLAIMER**

THIS DESIGN IS DIAGRAMMATIC. ALL PIPING, VALVES, AND OTHER EQUIPMENT SHOWN WITHIN PAVED AREAS OR OUT OF PROPERTY BOUNDARIES ARE FOR DESIGN CLARIFICATION ONLY, AND SHALL BE INSTALLED IN PLANTING AREAS WITHIN THE PROPERTY LINES OR LIMITS INDICATED ON PLAN. THE IRRIGATION CONTRACTOR SHALL VERIFY THE LOCATIONS OF ALL ABOVE-GRADE IRRIGATION EQUIPMENT WITH THE OWNER'S AUTHORIZED REPRESENTATIVE PRIOR TO INSTALLATION, OR IRRIGATION CONTRACTOR MAY BE REQUIRED TO MOVE SUCH ITEMS AT HIS OWN COST.

IRRIGATION CONTRACTOR IS RESPONSIBLE FOR VERIFYING ALL FINAL QUANTITIES PER DRAWINGS AND SPECIFICATIONS. ANY QUANTITIES PROVIDED ARE PROVIDED AS A CONVENIENCE TO THE CONTRACTOR ONLY AND SHALL NOT BE CONSIDERED ABSOLUTE.

**AUTOMATIC DRAIN VALVES AND AIR RELIEF VALVES**

INSTALL AUTOMATIC DRAIN VALVES AT THE LOW POINTS OF EACH LATERAL LINE (MIN. 2 PER VALVE) AS PER DETAIL L, SHEET L14. INSTALL AIR RELIEF VALVES ON DRIP SYSTEMS AT THE LOCATIONS SHOWN ON THE PLANS, AS AS PER DETAILS.

**CITY NOTES**

NO SUBSTANTIAL CHANGE FROM THE APPROVED LANDSCAPE PLAN MAY OCCUR WITHOUT PRIOR REVIEW OF THE PARKER WATER AND SANITATION DISTRICT, WHICH MAY REQUIRE ADDITIONAL IRRIGATION TAPS FOR CHANGES DUE TO MORE WATER INTENSIVE LANDSCAPING.

APPLICANT/DEVELOPER \_\_\_\_\_ DATE \_\_\_\_\_



**811**  
Know what's below. Call before you dig.  
CALL UTILITY NOTIFICATION CENTER OF COLORADO  
1-800-922-1987 or 811  
CALL 3-BUSINESS DAYS (NOT INCLUDING INITIAL DAY OF CONTACT) IN ADVANCE BEFORE YOU DIG, GRADE, OR EXCAVATE FOR THE MARKING OF UNDERGROUND MEMBER UTILITIES.

NO.	REVISION	DATE	BY
		5/26/2020	LML
LANDSCAPE REVISIONS FOR TRANSFORMER			
 EVERGREEN DESIGN GROUP (800) 680-6630 1600 Broadway, Suite 1600 Denver, CO 80202 www.EvergreenDesignGroup.com			
 EES ENGINEERING AND SOLUTIONS, INC. 501 S Cherry St, Suite 300 Glendale, CO 80246 303-572-7997 www.ees.us.com			
 Life Changing Chicken <b>SLIM CHICKENS</b> Chicken tenders - Buffalo Wings - Sandwiches - Salads - Wraps			
<b>SITE PLAN</b> <b>SLIM CHICKENS</b> SWC OF S. PARKER ROAD AND E. PINE LANE, PARKER, CO 80134 <b>IRRIGATION PLAN</b>			
PROJECT NO:	TSD003.01	DESIGNED BY:	LML
DRAWN BY:	LML	DATE:	06/15/2020
<b>L-3</b>			