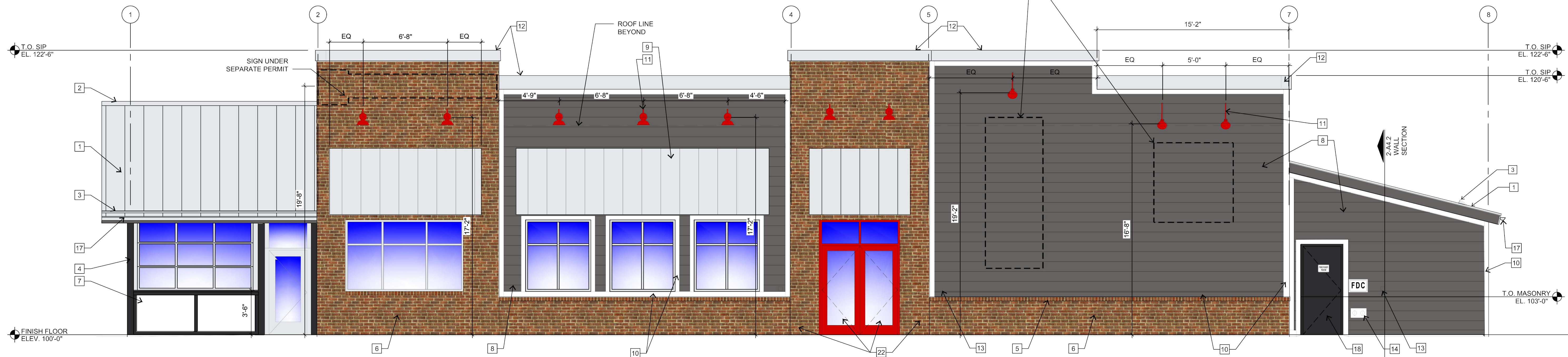


2 EAST ELEVATION
SCALE: 1/4" = 1'-0"



1 SOUTH ELEVATION
SCALE: 1/4" = 1'-0"

KEY	MATERIAL	MANUFACTURER	FINISH/STYLE	SPECIFICATIONS	LOCATION	MATERIAL NOTES
BR-1	BRICK	GENERAL SHALE	WATERTON	RUNNING BOND - ROWLOCK SILL	EXTERIOR WALLS	ALTERNATE: HEBRON - BELLTOWER
CD-1	COMPOSITE DECKING BOARDS	ENVISION	2" X 6" NOMINAL BOARDS W/ SQUARE EDGES	WEATHERED WOOD	PATIO SIGNAGE / DUMPSTER ENCLOSURE	1" GAPS BETWEEN BOARDS - FASTENED PER MFR RECOMMENDATIONS
FRP-1	FIBERGLASS REINFORCED PANEL	MARLITE OR APPROVED EQUAL	P100 WHITE	---	BACK OF HOUSE	PROVIDE MANUFACTURERS STANDARD PVC CORNER GUARDS. INSTALL ABOVE BASE.
MT-1	GALVALUME R-PANELS	METAL SALES MANUFACTURING CORP.	CLEAR	26 GAUGE	AWNINGS AND PATIO ROOF	---
MT-2	PRE-FINISHED METAL COPING	FIRESTONE	UNA-CLAD / CLEAR ANODIZED KYNAR 500 FINISH	.05" GAUGE	COPINGS	---
MT-3	GALVALUME COPING	METAL SALES MANUFACTURING CORP.	CLEAR	---	COPINGS AT DUMPSTER ENCLOSURE	---
MT-4	PRE-FINISHED METAL COPING	FIRESTONE	UNA-EDGE DE / CLEAR ANODIZED KYNAR 500 FINISH	.05" GAUGE	COPING AT DRIVE-THRU	---
P-1	PAINT	SHERWIN WILLIAMS	A-100 / SATIN	SW 7005 - PURE WHITE	EXTERIOR FIBER CEMENT BOARD TRIM	---
P-2	PRIMER	SHERWIN WILLIAMS	QUICK DRY STAIN BLOCKING PRIMER	---	EXTERIOR FIBER CEMENT BOARD TRIM	---
P-4	PAINT	SHERWIN WILLIAMS	A-100 / SATIN	SEE FINISH NOTE 2	EXTERIOR WOOD / FIBER CEMENT LAP SIDING / DUMPSTER ENCLOSURE STEEL POSTS AND CMU	---
	PRIMER	SHERWIN WILLIAMS	QUICK DRY STAIN BLOCKING PRIMER	BASE: TINT 50%	EXTERIOR WOOD / FIBER CEMENT LAP SIDING	---
	PRIMER	SHERWIN WILLIAMS	LOXON BLOCK SURFACER	BASE: TINT 50%	DUMPSTER ENCLOSURE CMU	---
	PRIMER	SHERWIN WILLIAMS	PRO-CRYL UNIVERSAL PRIMER / OFF-WHITE	BASE: TINT 50%	DUMPSTER ENCLOSURE STEEL POSTS	---
P-5	PAINT	SHERWIN WILLIAMS	DTM ACRYLIC / ULTRADEEP / SEMI-GLOSS	SW 6258 - TRICORN BLACK	HM DOORS & FRAMES	---
	PRIMER	SHERWIN WILLIAMS	PRO-CRYL UNIVERSAL PRIMER / OFF-WHITE	BASE: TINT 50%	---	---
P-6	PAINT	SHERWIN WILLIAMS	DTM ACRYLIC / SAFETY YELLOW / GLOSS	SW 4084 - SAFETY YELLOW	BOLLARDS	---
	PRIMER	SHERWIN WILLIAMS	PRO-CRYL UNIVERSAL PRIMER / OFF-WHITE	BASE: TINT 50%	---	---

- ### KEY NOTES [X] FOR SHEETS A2.1 & A2.2
- R-PANEL METAL ROOF (MT-1)
 - RIDGE CAP
 - CONTINUOUS ALUMINUM SNOW GUARD
 - STEEL POST, RE: STRUCT
 - ROWLOCK BRICK SILL
 - BRICK - RUNNING BOND (BR-1)
 - NON-ILLUMINATED FROSTED TRANSLUCENT PANEL
 - FIBER CEMENT BOARD LAP SIDING (P-4)
 - METAL AWNING (MT-1)
 - FIBER CEMENT BOARD TRIM, TYP (P-1)
 - EXTERIOR LIGHTING FIXTURE, RE: ELECTRICAL
 - PRE-FINISHED METAL COPING (MT-2)
 - KNOX BOX
 - FIRE DEPARTMENT CONNECTION
 - WALL MOUNTED TV'S ABOVE WINDOWS RE: SPECS
 - COMPOSITE DECKING BOARD (CD-1)
 - 5" HALF ROUND GALVANIZED METAL GUTTER & 4" ROUND DOWNSPOUTS TYP.
 - HOLLOW METAL DOOR AND (P-5) FRAME PAINT
 - ELECTRIC PANELS (P-1)
 - GAS METER
 - ROOF DRAIN OUTLET, RE: ROOF PLAN
 - BOLLARDS, RE: CIVIL (P-6)

- ### GENERAL NOTES
- SIGNAGE COMPANY TO PERMIT THE LARGEST POSSIBLE SIGNAGE. COORDINATE WITH AHJ.
- ### FINISH NOTES
- ALL MATERIAL SUBSTITUTIONS PROPOSED BY GENERAL CONTRACTORS MUST HAVE CORPORATE APPROVAL PRIOR TO SUBMISSION OF PROPOSAL. CONTRACTORS SUBMITTING PROPOSALS WITH MATERIALS OTHER THAN THOSE LISTED ABOVE DO SO AT THEIR OWN RISK.
 - FORMULA FOR ST-1:
1 GALLON FORMULA (TO MATCH HC-168 CHELSEA GRAY)
B1 - 18
N1 - 11
R2 - 1
Y3 - 7
W1 - 2Y
 - ALL CAULK/SEALANT USED IN PROJECT TO EXHIBIT COLOR THAT MATCHES ADJACENT FINISHES.

THE TOWN OF PARKER REVIEW CONSTITUTES GENERAL COMPLIANCE WITH THE TOWN'S STANDARDS AND APPROVED VARIANCES, SUBJECT TO THESE PLANS BEING STAMPED, SIGNED, AND DATED BY THE PROFESSIONAL ENGINEER OF RECORD. REVIEW BY THE TOWN DOES NOT CONSTITUTE APPROVAL OF THE DESIGN OR ACCURACY AND CORRECTNESS OF ENGINEERING CALCULATIONS. ERRORS IN THE PLAN OR CALCULATIONS REMAIN THE RESPONSIBILITY OF THE REGISTERED PROFESSIONAL ENGINEER WHOSE STAMP AND SIGNATURE ARE AFFIXED TO THIS DOCUMENT. THIS REVIEW DOES NOT CONSTITUTE APPROVAL OF ANY PRIVATE ON-SITE IMPROVEMENTS WHICH MAY BE SHOWN. CONSTRUCTION CANNOT COMMENCE UNTIL ALL REQUIRED DRAINAGE/TRAFFIC REPORT(S), FINAL DEVELOPMENT PLAN(S), SPECIAL REVIEW(S), GRADING PERMIT, AND/OR OTHER PERMITS ARE COMPLETE, APPROVED AND ON FILE WITH THE TOWN OF PARKER.

811 CALL UTILITY NOTIFICATION CENTER OF COLORADO
1-800-922-1987 or 811
CALL 3-BUSINESS DAYS (NOT INCLUDING INITIAL DAY OF CONTACT) IN ADVANCE BEFORE YOU DIG, GRADE, OR EXCAVATE FOR THE MARKING OF UNDERGROUND MEMBER UTILITIES.

DATE	BY	REVISION

EES ENTITLEMENT AND ENGINEERING SOLUTIONS, INC.
501 S. Cherry, St. Suite 300
Denver, CO 80246
303-572-7997 www.ees-us.com

SLIM CHICKENS
Life Changing Chicken
Chicken Tenders - Buffalo Wings - Sandwiches - Wraps

SITE PLAN
SLIM CHICKENS
BUILDING ELEVATIONS
SWC OF S. PARKER ROAD AND E. PINE LANE, PARKER, CO 80134
PROJECT NO: TSD003.01
DESIGNED BY: CAM
DRAWN BY: CAM
DATE: 06/15/2020
P4.1
SHEET 8 OF 9

P:\Projects\2020\19-0003\19-0003-01 SITE SUBMITTAL\A4.1 EXTERIOR ELEVATIONS.DWG