



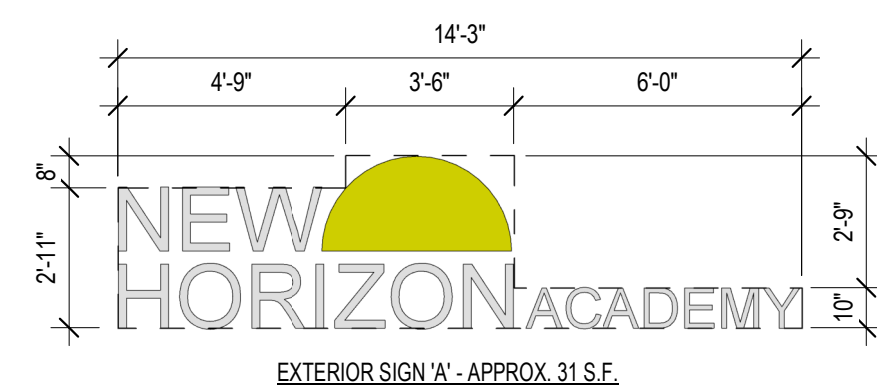
1 EAST ELEVATION  
3/16" = 1'-0"



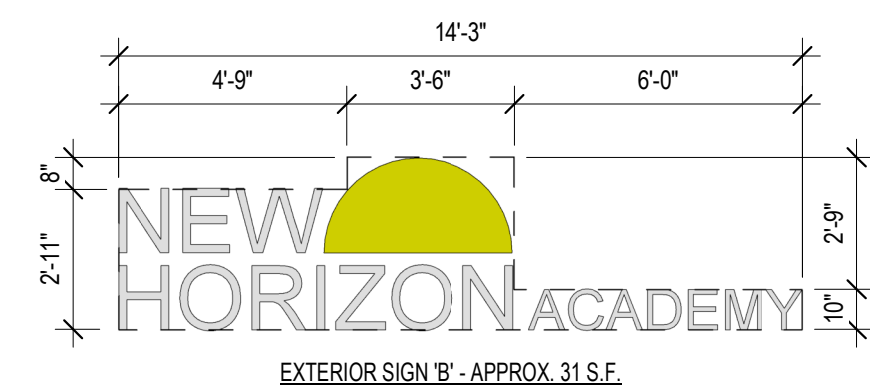
2 NORTH ELEVATION  
3/16" = 1'-0"

ELEVATION KEY NOTES (#)

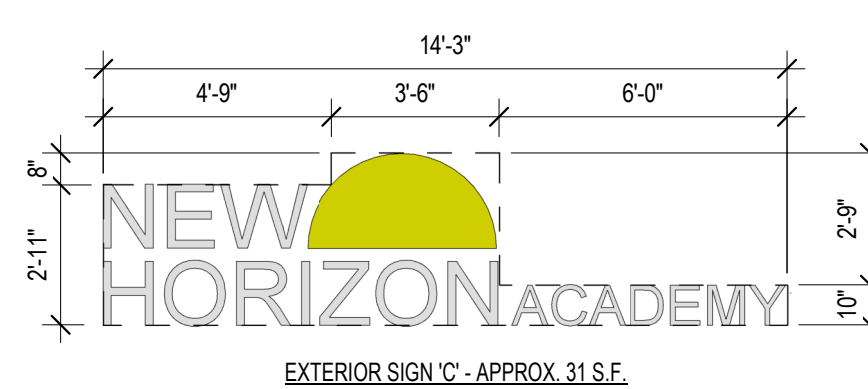
1. STONE VENEER - SOUTHERN LEDGESTONE 'CHARDONNAY' BY CULTURED STONE
2. WOOD SHAKE SIDING - HARDIESHINGLE - STRAIGHT EDGE PANEL 'NAVAJO BEIGE' BY JAMES HARDIE
3. HORIZONTAL SIDING - HARDIEPLANK - SMOOTH - 'KHAKI BROWN' BY JAMES HARDIE
4. BOARD AND BATTEN SIDING - HARDIEPANEL VERTICAL SIDING - SMOOTH - 'COBBLESTONE' WITH HARDIETRIM BOARD - SMOOTH BATTEN BOARD - 'COBBLESTONE' BY JAMES HARDIE.
5. PREFINISHED METAL COPING - 'WHITE'
6. ALUMINIUM STOREFRONT FRAMING / GLAZING ASSEMBLY - TINTED INSULATED LOW-E GLASS WITH 'DARK BRONZE' ANODIZED ALUMINUM FRAMES
7. ALUMINUM DOOR / GLAZING ASSEMBLY - TINTED INSULATED LOW-E GLASS WITH 'DARK BRONZE' ANODIZED ALUMINUM FRAMES
8. HOLLOW METAL DOOR AND FRAME - PAINT TO MATCH 'DARK BRONZE'
9. ARCHITECTURAL PRECAST CONCRETE SILL
10. EXTERIOR LED SIGNAGE. SEE ELECTRICAL DRAWINGS FOR FURTHER INFORMATION.
11. DECORATIVE COMPOSITE WOOD CORNICE - PAINT 'WHITE'
12. PREFINISHED METAL SCUPPER AND DOWNSPOUT - 'DARK BRONZE'. CONNECT DOWNSPOUT TO UNDERGROUND STORM SEWER. SEE CIVIL DRAWINGS FOR FURTHER INFORMATION.
13. LIGHT FIXTURE. SEE ELECTRICAL DRAWINGS FOR FURTHER INFORMATION.
14. 1x COMPOSITE WOOD TRIM - PAINT 'WHITE'
15. 'BLACK' FABRIC AWNING.
16. DASHED LINE DENOTES TOP OF ROOF BEYOND
17. DECORATIVE WOOD DENTAL - PAINT 'WHITE'.
18. ARCHITECTURAL PRECAST CONCRETE COLUMN CAP.
19. 8x8 COMPOSITE WOOD COLUMN. SEE STRUCTURAL FOR FURTHER INFORMATION.
20. 4x12 COMPOSITE WOOD BEAM.
21. 1x COMPOSITE WOOD TRIM - PAINT 'BLUE'
22. WALL MOUNTED CT CABINET - PAINT TO MATCH ADJACENT FINISH
23. ELECTRICAL METER - PAINT TO MATCH ADJACENT FINISH



EXTERIOR SIGN 'A' - APPROX. 31 S.F.



EXTERIOR SIGN 'B' - APPROX. 31 S.F.

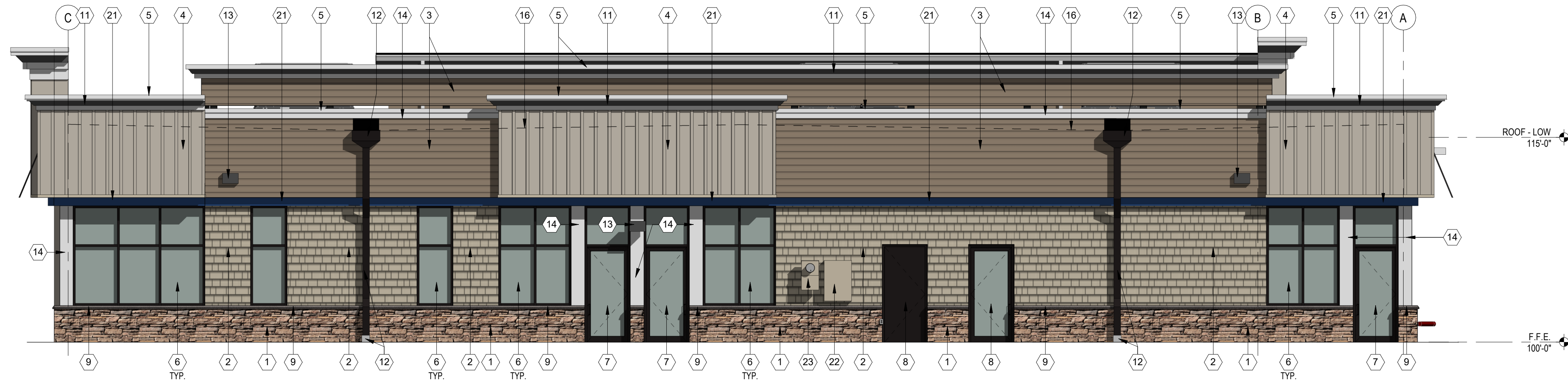


EXTERIOR SIGN 'C' - APPROX. 31 S.F.

3 EXTERIOR SIGN SCHEDULE  
1/4" = 1'-0"



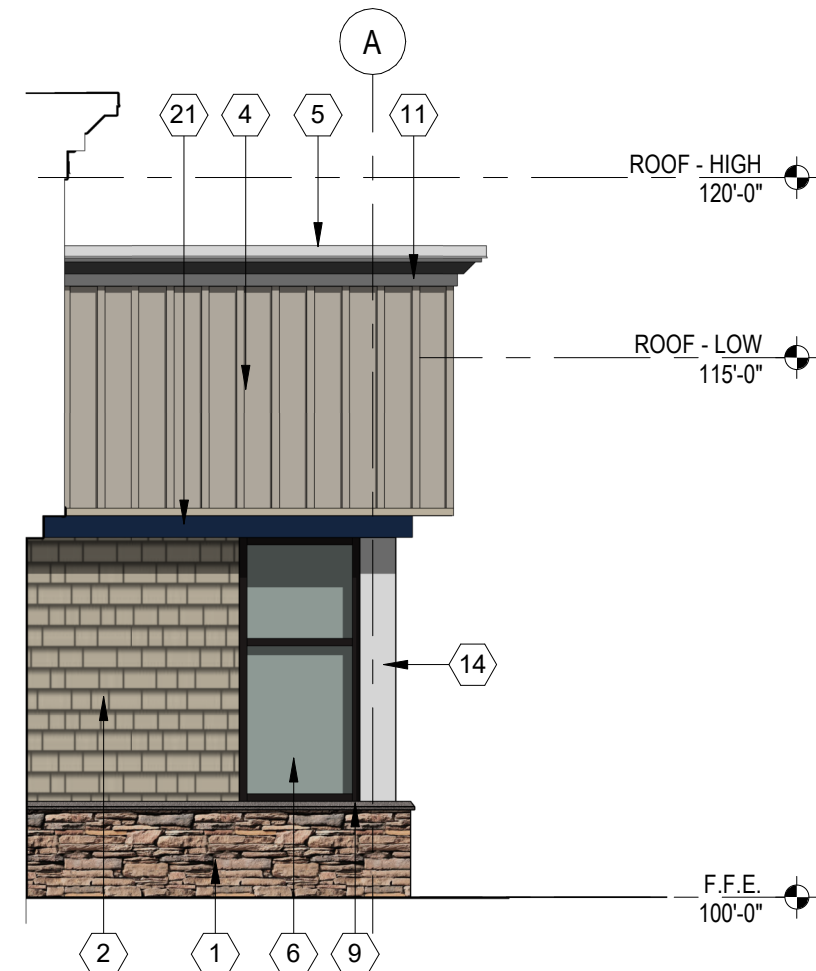
1 WEST ELEVATION  
3/16" = 1'-0"



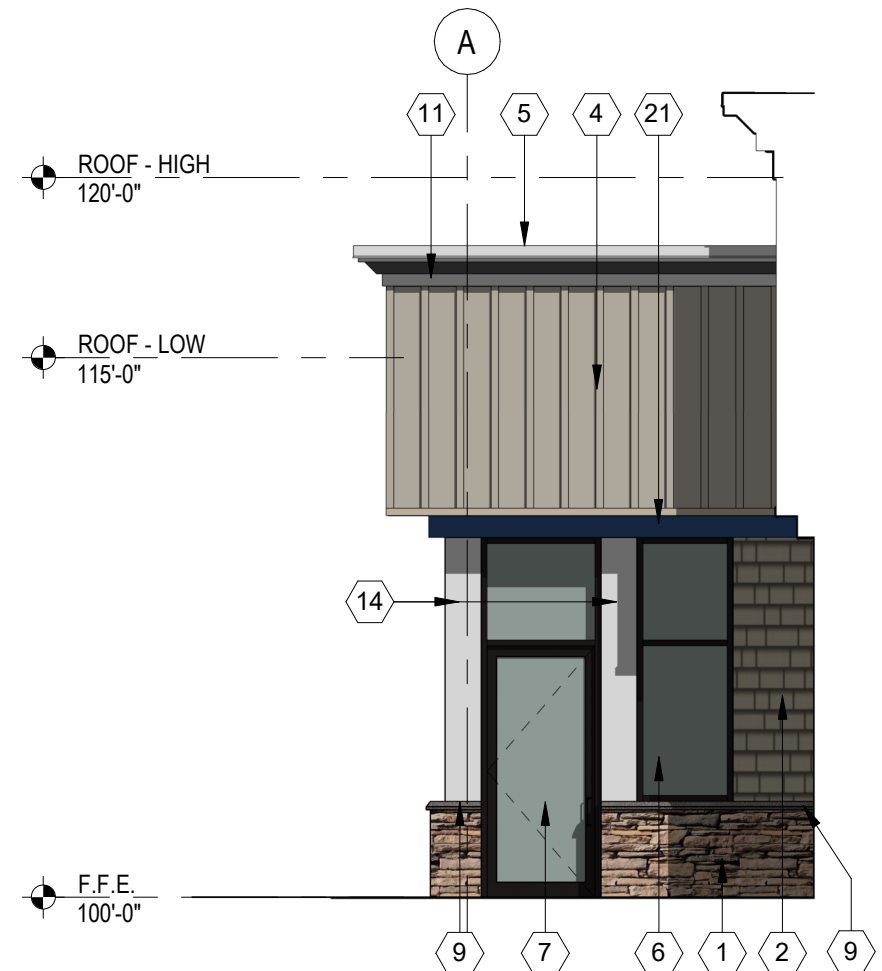
2 SOUTH ELEVATION  
3/16" = 1'-0"

ELEVATION KEY NOTES #

1. STONE VENEER - SOUTHERN LEDGESTONE 'CHARDONNAY' BY CULTURED STONE
2. WOOD SHAKE SIDING - HARDIESHINGLE - STRAIGHT EDGE PANEL 'NAVAJO BEIGE' BY JAMES HARDIE
3. HORIZONTAL SIDING - HARDIEPLANK - SMOOTH - 'KHAKI BROWN' BY JAMES HARDIE
4. BOARD AND BATTEN SIDING - HARDIEPANEL VERTICAL SIDING - SMOOTH - 'COBBLESTONE' WITH HARDIETRIM BOARD - SMOOTH BATTEN BOARD - 'COBBLESTONE' BY JAMES HARDIE
5. PREFINISHED METAL COPING - 'WHITE'
6. ALUMINUM STOREFRONT FRAMING / GLAZING ASSEMBLY - TINTED INSULATED LOW-E GLASS WITH 'DARK BRONZE' ANODIZED ALUMINUM FRAMES
7. ALUMINUM DOOR / GLAZING ASSEMBLY - TINTED INSULATED LOW-E GLASS WITH 'DARK BRONZE' ANODIZED ALUMINUM FRAMES
8. HOLLOW METAL DOOR AND FRAME - PAINT TO MATCH 'DARK BRONZE'
9. ARCHITECTURAL PRECAST CONCRETE SILL
10. EXTERIOR LED SIGNAGE. SEE ELECTRICAL DRAWINGS FOR FURTHER INFORMATION.
11. DECORATIVE COMPOSITE WOOD CORNICE - PAINT 'WHITE'
12. PREFINISHED METAL SCUPPER AND DOWNSPOUT - 'DARK BRONZE'. CONNECT DOWNSPOUT TO UNDERGROUND STORM SEWER. SEE CIVIL DRAWINGS FOR FURTHER INFORMATION.
13. LIGHT FIXTURE. SEE ELECTRICAL DRAWINGS FOR FURTHER INFORMATION.
14. 1x COMPOSITE WOOD TRIM - PAINT 'WHITE'
15. 'BLACK' FABRIC AWNING.
16. DASHED LINE DENOTES TOP OF ROOF BEYOND
17. DECORATIVE WOOD DENTAL - PAINT 'WHITE'
18. ARCHITECTURAL PRECAST CONCRETE COLUMN CAP.
19. 8x8 COMPOSITE WOOD COLUMN. SEE STRUCTURAL FOR FURTHER INFORMATION.
20. 4x12 COMPOSITE WOOD BEAM.
21. 1x COMPOSITE WOOD TRIM - PAINT 'BLUE'
22. WALL MOUNTED CT CABINET - PAINT TO MATCH ADJACENT FINISH
23. ELECTRICAL METER - PAINT TO MATCH ADJACENT FINISH



3 SOUTH ENTRY ELEVATION  
3/16" = 1'-0"



4 NORTH ENTRY ELEVATION  
3/16" = 1'-0"