

**NOT FOR
CONSTRUCTION**

Owner
New Horizon Academy
3405 Annapolis Lane
N., Suite 100
Plymouth, MN 55447
763.557.1111

Architect
Short Elliott Hendrickson, Inc.
2000 South Colorado Boulevard
Tower One, Suite 6000
Denver, Colorado 80222
720.540.6800

Landscape Architect
Short Elliott Hendrickson, Inc.
10901 Red Circle Drive
Suite 300
Minnetonka, MN 55343
952.912.2600

Civil Engineer
Short Elliott Hendrickson, Inc.
418 West Superior Street
Suite 200
Duluth, MN 55802
218.279.3000

Structural Engineer

Mechanical Engineer

Electrical Engineer

**NEW HORIZON ACADEMY -
CHAMBERS & HESS**
PARKER, CO

This drawing is an instrument of service and shall remain the property of Short Elliott Hendrickson, Inc. (SEH). This drawing and the concepts and ideas contained herein shall not be used, reproduced, revised, or retained without the express written approval of SEH.

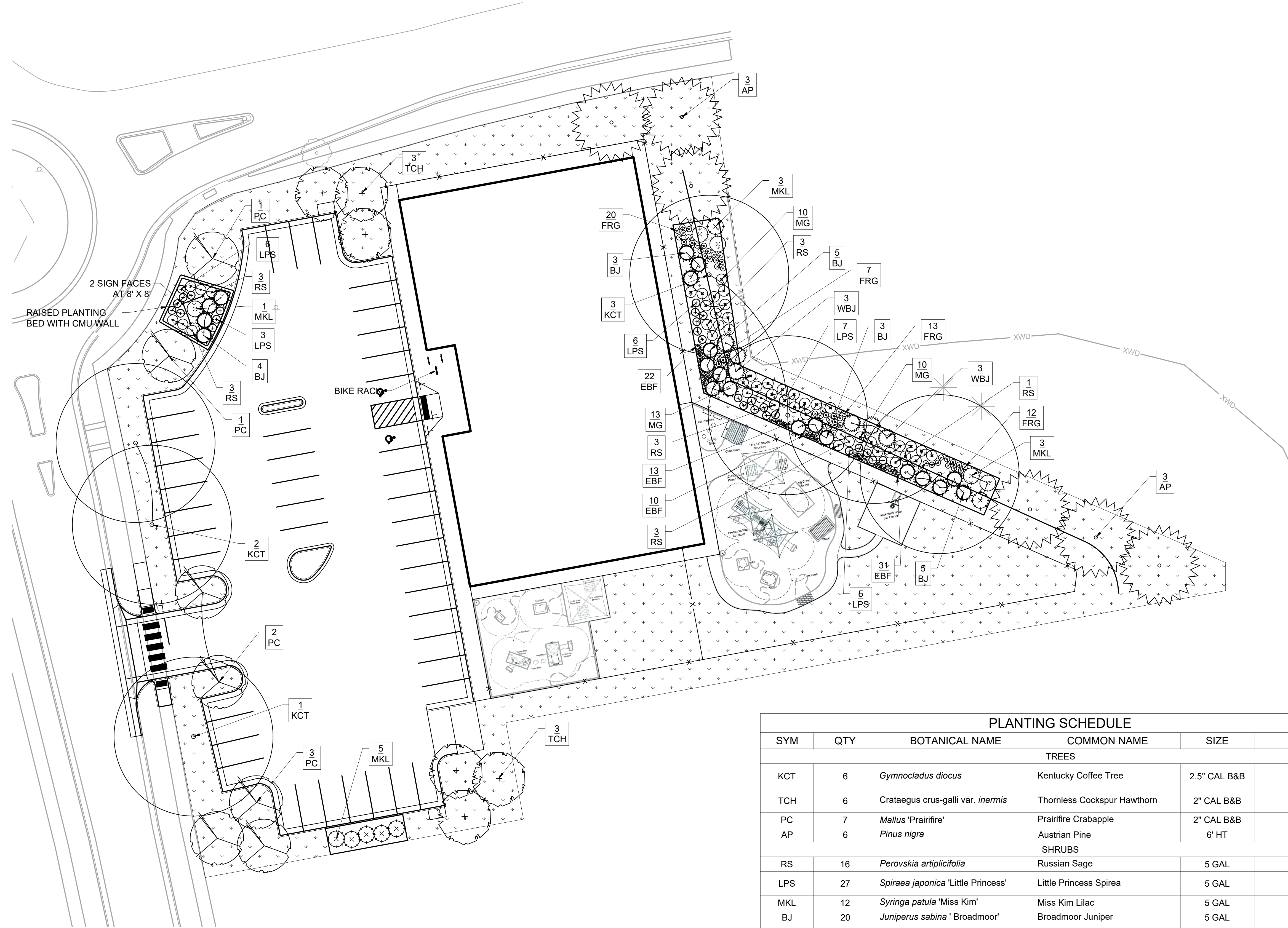
Submission or distribution of this drawing to meet official or regulatory requirements or for other purposes in connection with the project is not to be construed as publication or delegation of any of the rights of SEH.

SEH Project: NHOAC 156217
Checked By: KW
Drawn By: VT

Project Status: Issue Date

Revision Issue

Rev. # Description Date



1 LANDSCAPE PLAN
SCALE: 1" = 20'-0"

PLANTING SCHEDULE					
SYM	QTY	BOTANICAL NAME	COMMON NAME	SIZE	NOTES
TREES					
KCT	6	<i>Gymnocladus dioica</i>	Kentucky Coffee Tree	2.5" CAL B&B	
TCH	6	<i>Crataegus crus-galli</i> var. <i>inermis</i>	Thornless Cockspur Hawthorn	2" CAL B&B	
PC	7	<i>Mallus 'Prairifire'</i>	Prairifire Crabapple	2" CAL B&B	
AP	6	<i>Pinus nigra</i>	Austrian Pine	6' HT	
SHRUBS					
RS	16	<i>Perovskia artiplicifolia</i>	Russian Sage	5 GAL	
LPS	27	<i>Spiraea japonica</i> 'Little Princess'	Little Princess Spirea	5 GAL	
MKL	12	<i>Syringa patula</i> 'Miss Kim'	Miss Kim Lilac	5 GAL	
BJ	20	<i>Juniperus sabina</i> 'Broadmoor'	Broadmoor Juniper	5 GAL	
WBJ	6	<i>Juniperus scopulorum</i> 'Wichita Blue'	Wichita Blue Juniper	5 GAL	
ORNAMENTAL GRASSES					
FRG	52	<i>Calamagrostis acutiflora</i> 'Karl Foerster'	Karl Foerster Feather Reed Grass	1 GAL	
EBF	76	<i>Festuca glauca</i> 'Elijah Blue'	Elijah Blue Fescue	1 GAL	
MG	33	<i>Miscanthus sinensis</i> 'Gracillimus'	Maiden Grass	1 GAL	

Turf Seed Mixture: Seed mixture to contain native grasses such as Blue Grama and Buffalo Grass

X:\WORK\PROJECTS\156217\FINAL\050815\050815_PLAN_ARCH\NHOAC156217_LA_2016.10.22.DWG (1/15/2016 4:01 PM)



Building a Better World
for All of Us

**NOT FOR
CONSTRUCTION**

Owner
New Horizon Academy
3405 Annapolis Lane
N., Suite 100
Plymouth, MN 55447
763.557.1111

Architect
Short Elliott Hendrickson, Inc.
2000 South Colorado Boulevard
Tower One, Suite 6000
Denver, Colorado 80222
720.540.6800

Landscape Architect
Short Elliott Hendrickson, Inc.
10901 Red Circle Drive
Suite 300
Minnetonka, MN 55343
952.912.2600

Civil Engineer
Short Elliott Hendrickson, Inc.
418 West Superior Street
Suite 200
Duluth, MN 55802
218.279.3000

Structural Engineer

Mechanical Engineer

Electrical Engineer

New Horizon Academy
**NEW HORIZON ACADEMY -
CHAMBERS & HESS**
PARKER, CO

This drawing is an instrument of service and shall remain the property of Short Elliott Hendrickson, Inc. (SEH). This drawing and the concepts and ideas contained herein shall not be used, reproduced, revised, or retained without the express written approval of SEH.

Submission or distribution of this drawing to meet official or regulatory requirements or for other purposes in connection with the project is not to be construed as publication in derogation of any of the rights of SEH.

SEH Project NHOAC 156217
Checked By KW
Drawn By VT

Project Status Issue Date

- -

- -

- -

Revision Issue

Rev. # Description Date

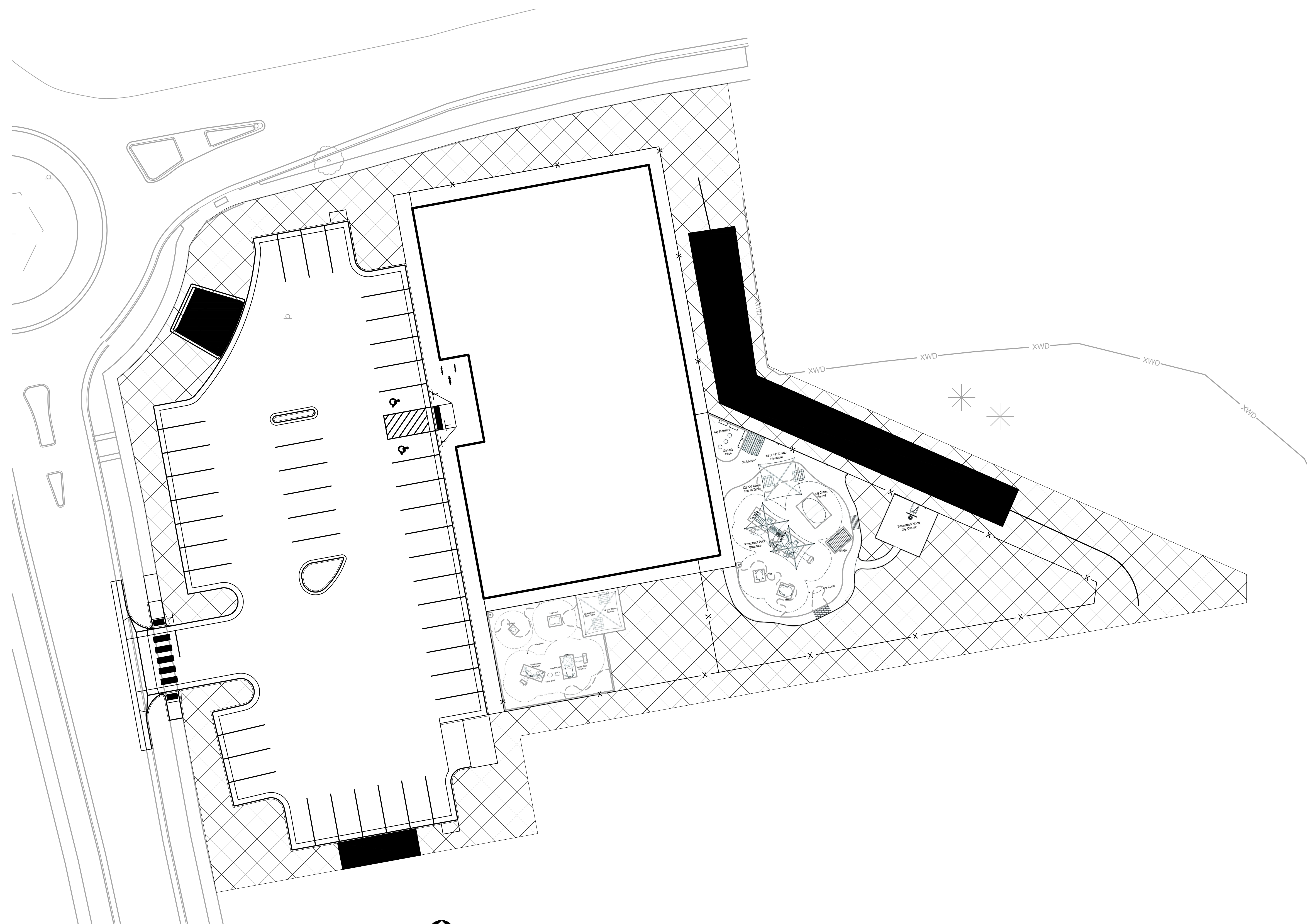
- - -

- - -

- - -

IRRIGATION DIAGRAM

L1.02



1 IRRIGATION DIAGRAM
SCALE: 1" = 20'-0"
0' 10' 20' 40' 80'



DRIP IRRIGATION
 SPRINKLER HEADS

X:\WORK\PROJECTS\156217\FINAL\050815\DRAWINGS\252\FINAL\NHOAC156217_L1_2020.10.22.DWG (1/15/2020 4:01 PM)

