



Building a Better World for All of Us®

NOT FOR CONSTRUCTION

Owner: New Horizon Academy, 3405 Annapolis Lane N., Suite 100, Plymouth, MN 55447, 763.557.1111. Architect: Short Elliott Hendrickson, Inc., 2000 South Colorado Boulevard, Tower One, Suite 6000, Denver, Colorado 80222, 720.540.6800. Landscape Architect: Short Elliott Hendrickson, Inc., 19501 Reed Circle Drive, Suite 300, Minnetonka, MN 55343, 952.912.2600. Civil Engineer: Short Elliott Hendrickson, Inc., 418 West Superior Street, Suite 200, Duluth, MN 55802, 218.279.3000. Structural Engineer: Short Elliott Hendrickson, Inc., 418 West Superior Street, Suite 200, Duluth, MN 55802, 218.279.3000.

Mechanical Engineer

Electrical Engineer

NEW HORIZON ACADEMY - DOUGLAS 234 FILING, NO. X PARKER, CO

This drawing is an instrument of service and shall remain the property of Short Elliott Hendrickson, Inc. (SEH). This drawing and the concepts and ideas contained herein shall not be used, reproduced, revised, or retained without the express written approval of SEH. Substitution or distribution of this drawing to meet official or regulatory requirements or for other purposes in connection with the project is not to be construed as publication in derogation of any of the rights of SEH.

SEH Project: NHOAC 156217. Checked By: DRH. Drawn By: AMP.

Project Status: TOWN REVIEW. Issue Date: 8/26/2020.

Revision Issue table with columns: Rev. #, Description, Date.

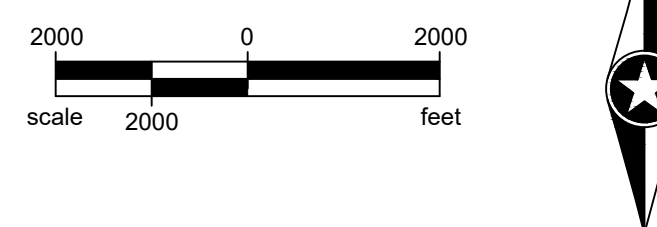
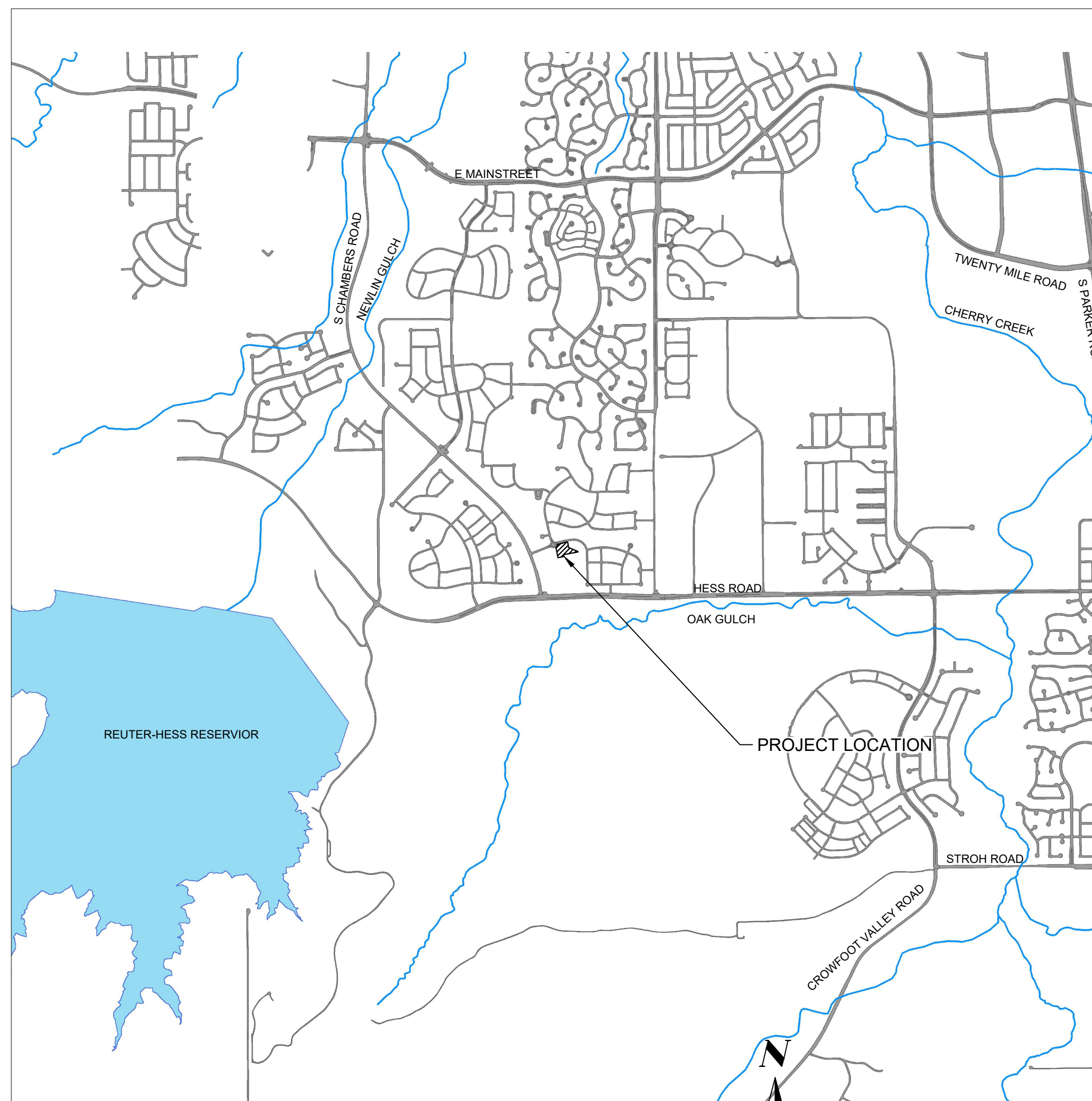
COVER SHEET

C0.0

DOUGLAS 234, FILING NO. X

A PORTION OF THE SOUTHWEST QUARTER OF THE SOUTHWEST QUARTER OF SECTION 29, TOWNSHIP 6 SOUTH, RANGE 66 WEST OF THE 6TH PRINCIPAL MERIDIAN TOWN OF PARKER, COUNTY OF DOUGLAS, STATE OF COLORADO 1.518 ACRES

SITE PLANS FOR NEW HORIZON ACADEMY



PLAN SHEET INDEX table with columns: SHEET NUMBER, SHEET TITLE. Rows include C0.0 COVER SHEET, C1.1 OVERALL SITE, C1.2 BUILDING SITE LAYOUT, C1.3 PARKING LOT SITE LAYOUT, C5.0 SIGNAGE PLAN, L1.01 LANDSCAPE PLAN, L1.02 IRRIGATION DIAGRAM, L1.03 LANDSCAPE DETAILS, A2.0 EXTERIOR ELEVATIONS, A2.1 EXTERIOR ELEVATIONS, ES.01 PHOTOMETRIC SITE PLAN.

CONTACT LIST

PARKER PUBLIC WORKS: 20120 E MAINSTREET, PARKER, CO 80138. STREETS - MIKE WAUGH. STORM WATER - JACOB JAMES. 303-840-9546.

TOWN OF PARKER POLICE DEPARTMENT: 196000 E PARKER SQUARE DR., PARKER, CO 80134. 303-841-9800.

PARKER WATER AND SANITATION DISTRICT: 18100 E. WOODMAN DR., PARKER, CO 80134. 303-841-4627.

FIRE & LIFE SAFETY: RANDALL CAPRA, 20120 E. MAINSTREET, CENTENNIAL, CO 80138. 303-205-3169.

UTILITY NOTIFICATION COMPANY OF COLORADO: 2801 S. YOUNGFIELD ST. SUITE 301, GOLDEN, CO 80401. LOCAL CALLS (811). 800-922-1987.

XCEL ENERGY: MICHELLE O'NAN, 5909 E. 38TH AVE., DENVER, CO 80207. 303-329-1618.

COMCAST: KEVIN YOUNG, 6859 S. TUCSON WAY, ENGLEWOOD, CO 80112. 720-490-3867.

CENTURY LINK: WILLIAM BENSON, 9750 E. COSTILLA AVE., ENGLEWOOD, CO 80220. 303-792-6069.

COLORADO DEPARTMENT OF HEALTH: 4210 E. 11TH AVE., DENVER, CO. 303-320-8333.

INTERMOUNTAIN RURAL ELECTRIC ASSOCIATION: JASON JENKS, 5496 NORTH US HWY 85, P.O. BOX DRAWER A, SEDALIA, CO 80135. 303-688-3100.

URBAN DRAINAGE FLOOD CONTROL DISTRICT (UDFCD): MIKE SARMENTO, 2480 W 26TH AVE. SUITE 156-B, DENVER, CO 80211. 303-455-6277.

SITE DISTANCE CERTIFICATION

I, THE UNDERSIGNED, HEREBY CERTIFY THAT THE PROPOSED SUBDIVISION IS DESIGNED IN ACCORDANCE WITH THE TOWN OF PARKER SIGHT DISTANCE CRITERIA AND WITH AASHTO POLICY ON GEOMETRIC DESIGN OF HIGHWAY & STREETS.

"COLORADO LICENSED ENGINEER" LICENSE NO.

TOWN OF PARKER APPROVAL

THE TOWN OF PARKER REVIEW CONSTITUTES GENERAL COMPLIANCE WITH THE TOWN'S STANDARDS AND APPROVED VARIANCES, SUBJECT TO THESE PLANS BEING STAMPED, SIGNED, AND DATED BY THE PROFESSIONAL ENGINEER OF RECORD. REVIEW BY THE TOWN DOES NOT CONSTITUTE APPROVAL OF THE PLAN DESIGN OR ACCURACY AND CORRECTNESS OF ENGINEERING CALCULATIONS. ERRORS IN THE DESIGN OR CALCULATIONS REMAIN THE RESPONSIBILITY OF THE REGISTERED PROFESSIONAL ENGINEER WHOSE STAMP AND SIGNATURE ARE AFFIXED TO THIS DOCUMENT.

THIS REVIEW DOES NOT CONSTITUTE APPROVAL OF ANY PRIVATE ON-SITE IMPROVEMENTS WHICH MAY BE CONSTRUCTION CANNOT COMMENCE UNTIL ALL REQUIRED DRAINAGE/TRAFFIC REPORT(S), FINAL DEVELOPMENT PLAN(S), SPECIAL REVIEW(S), GRADING PERMIT, AND/OR OTHER PERMITS ARE COMPLETE, APPROVED AND ON FILE WITH THE TOWN OF PARKER.

TOWN OF PARKER, DIRECTOR OF ENGINEERING/PUBLIC WORKS DATE

EXISTING

- RIGHT OF WAY, PERMANENT EASEMENT, PROPERTY LINE, HORIZONTAL CONTROL POINT, BENCHMARK, SURVEY MARKER, SOIL BORING, SANITARY SEWER AND MANHOLE, FORCE MAIN AND LIFT STATION, SANITARY SEWER SERVICE & CLEANOUT, WATER MAIN, HYDRANT, VALVE AND MANHOLE, WATER SERVICE AND CURB STOP BOX, STORM SEWER, MANHOLE AND CATCH BASIN, CULVERT AND APRON ENDWALL, GAS MAIN, VALVE, VENT AND METER, HANDHOLE, BURIED FIBER OPTIC CABLE AND MANHOLE, BURIED PHONE CABLE, PEDESTAL AND MANHOLE, BURIED TV CABLE, PEDESTAL AND MANHOLE, BURIED ELECTRIC CABLE, PEDESTAL, MANHOLE, TRANSFORMER AND METER, OVERHEAD WIRE, POLE AND GUY WIRE, LIGHT POLE, TRAFFIC SIGNAL, STREET NAME SIGN, SIGN (NON STREET NAME), RAILROAD TRACKS, DECIDUOUS AND CONIFEROUS TREE, BUSH / SHRUB AND STUMP, EDGE OF WOODED AREA, WETLAND, BUILDING, FENCE (UNIDENTIFIED), BARBED WIRE FENCE, CHAIN LINK FENCE, ELECTRIC WIRE FENCE, WOOD FENCE, WOVEN WIRE FENCE, PLATE BEAM GUARDRAIL, CABLE GUARDRAIL, POST / BOLLARD, RETAINING WALL.

PROPOSED

- STREET CENTERLINE, RIGHT-OF-WAY, PERMANENT EASEMENT, TEMPORARY EASEMENT, CONSTRUCTION LIMITS, SANITARY SEWER, BULKHEAD AND MANHOLE, FORCE MAIN, SANITARY SERVICE AND CLEANOUT, WATER MAIN, TEE, HYDRANT, BULKHEAD AND VALVE, WATER VALVE MANHOLE, REDUCER, BEND AND CROSS, WATER SERVICE AND CURB STOP BOX, STORM SEWER, MANHOLE AND CATCH BASIN, CULVERT AND APRON ENDWALL, DRAIN TILE, DITCH / SWALE, RIPRAP, STREET NAME SIGN, SIGN (NON STREET NAME), RETAINING WALL.

SOIL PREPARATION AND PAVEMENT DESIGN NOTE

SOIL PREPARATION AND PAVEMENT DESIGN SHALL BE PER RECOMMENDATIONS FROM A GEOTECHNICAL REPORT PREPARED FOR THIS SITE AS FOLLOWS.

GEOTECHNICAL ENGINEER: ROCKY MOUNTAIN GROUP. PROJECT NO. 167366

THE CONTRACTOR MUST FULLY REVIEW THIS REPORT AND BRING ANY CONFLICTS BETWEEN IT AND THE CONSTRUCTION PLANS AND SPECIFICATIONS TO THE ENGINEER'S ATTENTION PRIOR TO BEGINNING WORK.

BASIS OF BEARINGS:

THE SOUTH LINE OF THE SOUTHEAST QUARTER OF SECTION 29 TOWNSHIP 6 SOUTH, RANGE 66 WEST, 6TH P.M. BEARING SOUTH 89°15'13" WEST AS SHOWN ON FINAL PLAT DOUGLAS 234 FILING NO. 1.

BENCHMARK

BENCHMARK IS BY GPS OBSERVATION NAVD 88. SET SITE BENCHMARK AT NORTHWEST CORNER OF INLET ON CHAMBERS RD. APPROXIMATELY 200'+/- NORTH OF HESS RD.



Building a Better World for All of Us®

NOT FOR CONSTRUCTION

Owner
New Horizon Academy
3405 Annapolis Lane
N., Suite 100
Flynnville, MN 55447
763.557.1111

Architect
Short Elliott Hendrickson, Inc.
2000 South Colorado Boulevard
Tower One, Suite 6000
Denver, Colorado 80222
720.540.6800

Landscape Architect
Short Elliott Hendrickson, Inc.
10901 Red Circle Drive
Suite 300
Minnetonka, MN 55343
952.912.2800

Civil Engineer
Short Elliott Hendrickson, Inc.
418 West Superior Street
Suite 200
Duluth, MN 55802
218.279.3000

Structural Engineer

Mechanical Engineer

Electrical Engineer

NEW HORIZON ACADEMY -
DOUGLAS 234 FILING, NO. X
PARKER, CO

This drawing is an instrument of service and shall remain the property of Short Elliott Hendrickson, Inc. (SEH). This drawing and the concepts and ideas contained herein shall not be used, reproduced, revised, or retained without the express written approval of SEH.

Submission or distribution of this drawing to meet official or regulatory requirements or for other purposes in connection with the project is not to be construed as publication in derogation of any of the rights of SEH.

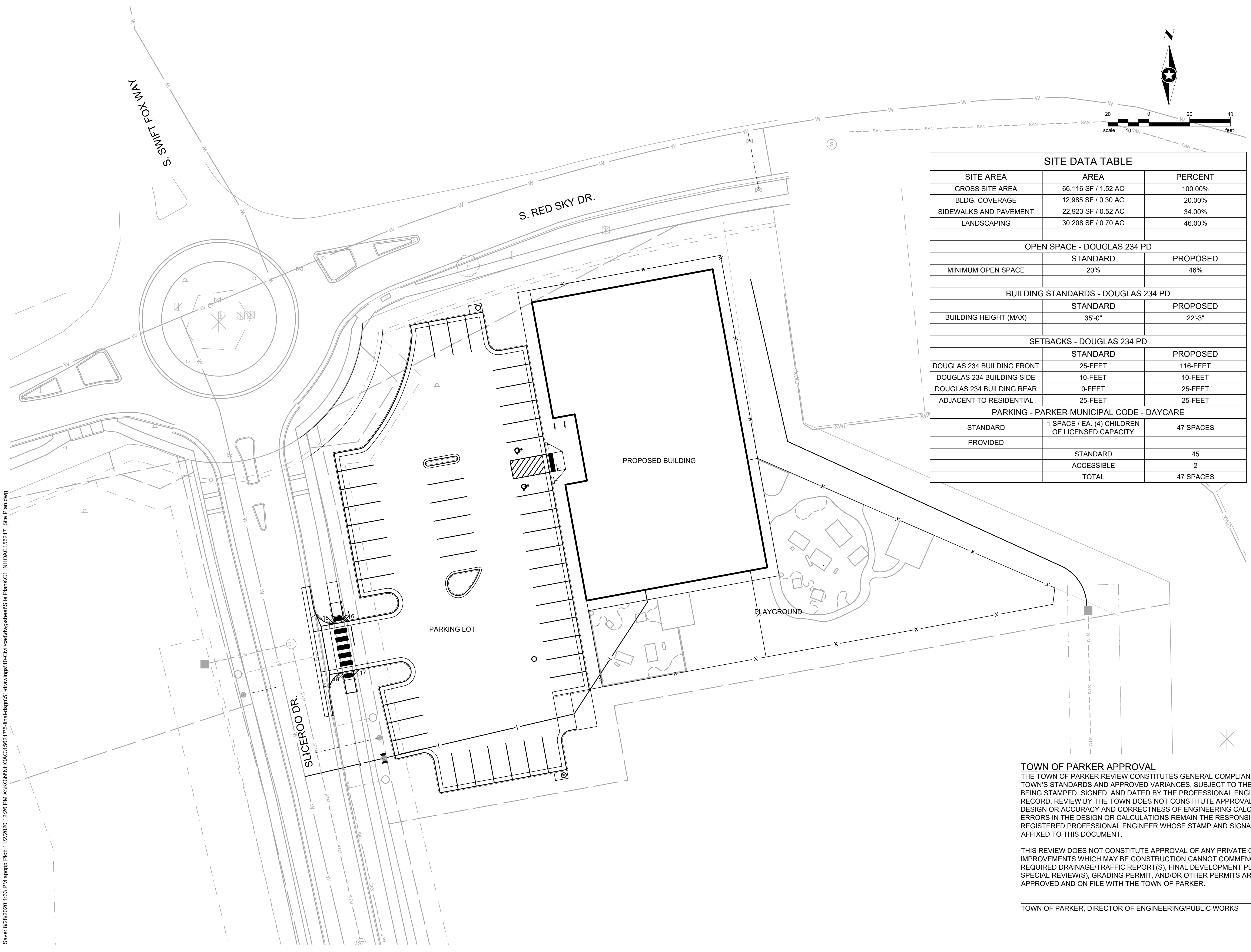
SEH Project NHOAC 156217
Checked By DRH
Drawn By AMP

Project Status Issue Date
TOWN REVIEW 8/26/2020

Revision Issue
Rev. # Description Date

OVERALL SITE

C1.1



| SITE DATA TABLE | | |
|---|---|-----------|
| SITE AREA | AREA | PERCENT |
| GROSS SITE AREA | 66,116 SF / 1.52 AC | 100.00% |
| BLDG. COVERAGE | 12,985 SF / 0.30 AC | 20.00% |
| SIDEWALKS AND PAVEMENT | 22,923 SF / 0.52 AC | 34.00% |
| LANDSCAPING | 30,208 SF / 0.70 AC | 46.00% |
| OPEN SPACE - DOUGLAS 234 PD | | |
| | STANDARD | PROPOSED |
| MINIMUM OPEN SPACE | 20% | 46% |
| BUILDING STANDARDS - DOUGLAS 234 PD | | |
| | STANDARD | PROPOSED |
| BUILDING HEIGHT (MAX) | 35'-0" | 22'-3" |
| SETBACKS - DOUGLAS 234 PD | | |
| | STANDARD | PROPOSED |
| DOUGLAS 234 BUILDING FRONT | 25- FEET | 116- FEET |
| DOUGLAS 234 BUILDING SIDE | 10- FEET | 10- FEET |
| DOUGLAS 234 BUILDING REAR | 0- FEET | 25- FEET |
| ADJACENT TO RESIDENTIAL | 25- FEET | 25- FEET |
| PARKING - PARKER MUNICIPAL CODE - DAYCARE | | |
| STANDARD | 1 SPACE / EA. (4) CHILDREN OF LICENSED CAPACITY | 47 SPACES |
| PROVIDED | | |
| | STANDARD | 45 |
| | ACCESSIBLE | 2 |
| | TOTAL | 47 SPACES |

TOWN OF PARKER APPROVAL
THE TOWN OF PARKER REVIEW CONSTITUTES GENERAL COMPLIANCE WITH THE TOWN'S STANDARDS AND APPROVED VARIANCES, SUBJECT TO THESE PLANS BEING STAMPED, SIGNED, AND DATED BY THE PROFESSIONAL ENGINEER OF RECORD. REVIEW BY THE TOWN DOES NOT CONSTITUTE APPROVAL OF THE PLAN DESIGN OR ACCURACY AND CORRECTNESS OF ENGINEERING CALCULATIONS. ERRORS IN THE DESIGN OR CALCULATIONS REMAIN THE RESPONSIBILITY OF THE REGISTERED PROFESSIONAL ENGINEER WHOSE STAMP AND SIGNATURE ARE AFFIXED TO THIS DOCUMENT.

THIS REVIEW DOES NOT CONSTITUTE APPROVAL OF ANY PRIVATE ON-SITE IMPROVEMENTS WHICH MAY BE CONSTRUCTION CANNOT COMMENCE UNTIL ALL REQUIRED DRAINAGE/TRAFFIC REPORT(S), FINAL DEVELOPMENT PLAN(S), SPECIAL REVIEW(S), GRADING PERMIT, AND/OR OTHER PERMITS ARE COMPLETE, APPROVED AND ON FILE WITH THE TOWN OF PARKER.

TOWN OF PARKER, DIRECTOR OF ENGINEERING/PUBLIC WORKS DATE

Save: 8/26/2020 1:33 PM appopp Plot: 11/2/2020 12:26 PM X:\K\N\NHOAC\156217\Final-dsgn\15-drawings\10-Civil\card.dwg\sheet\Site Plans\C1_NHOAC156217_Site Plan.dwg

**NOT FOR
CONSTRUCTION**

Owner
New Horizon Academy
3405 Annapolis Lane
N, Suite 100
Plymouth, MN 55447
763.557.1111

Architect
Short Elliott Hendrickson, Inc.
2000 South Colorado Boulevard
Tower One, Suite 6000
Denver, Colorado 80222
720.540.6800

Landscape Architect
Short Elliott Hendrickson, Inc.
10901 Red Circle Drive
Suite 300
Minnetonka, MN 55343
952.912.2600

Civil Engineer
Short Elliott Hendrickson, Inc.
418 West Superior Street
Suite 200
Duluth, MN 55802
218.279.3000

Structural Engineer

Mechanical Engineer

Electrical Engineer

**NEW HORIZON ACADEMY -
DOUGLAS 234 FILING, NO. X**
PARKER, CO

This drawing is an instrument of service and shall remain the property of Short Elliott Hendrickson, Inc. (SEH). This drawing and the concepts and ideas contained herein shall not be used, reproduced, revised, or retained without the express written approval of SEH.

Submission or distribution of this drawing to meet official or regulatory requirements or for other purposes in connection with the project is not to be construed as publication in derogation of any of the rights of SEH.

SEH Project NHOAC 156217
Checked By DRH
Drawn By AMP

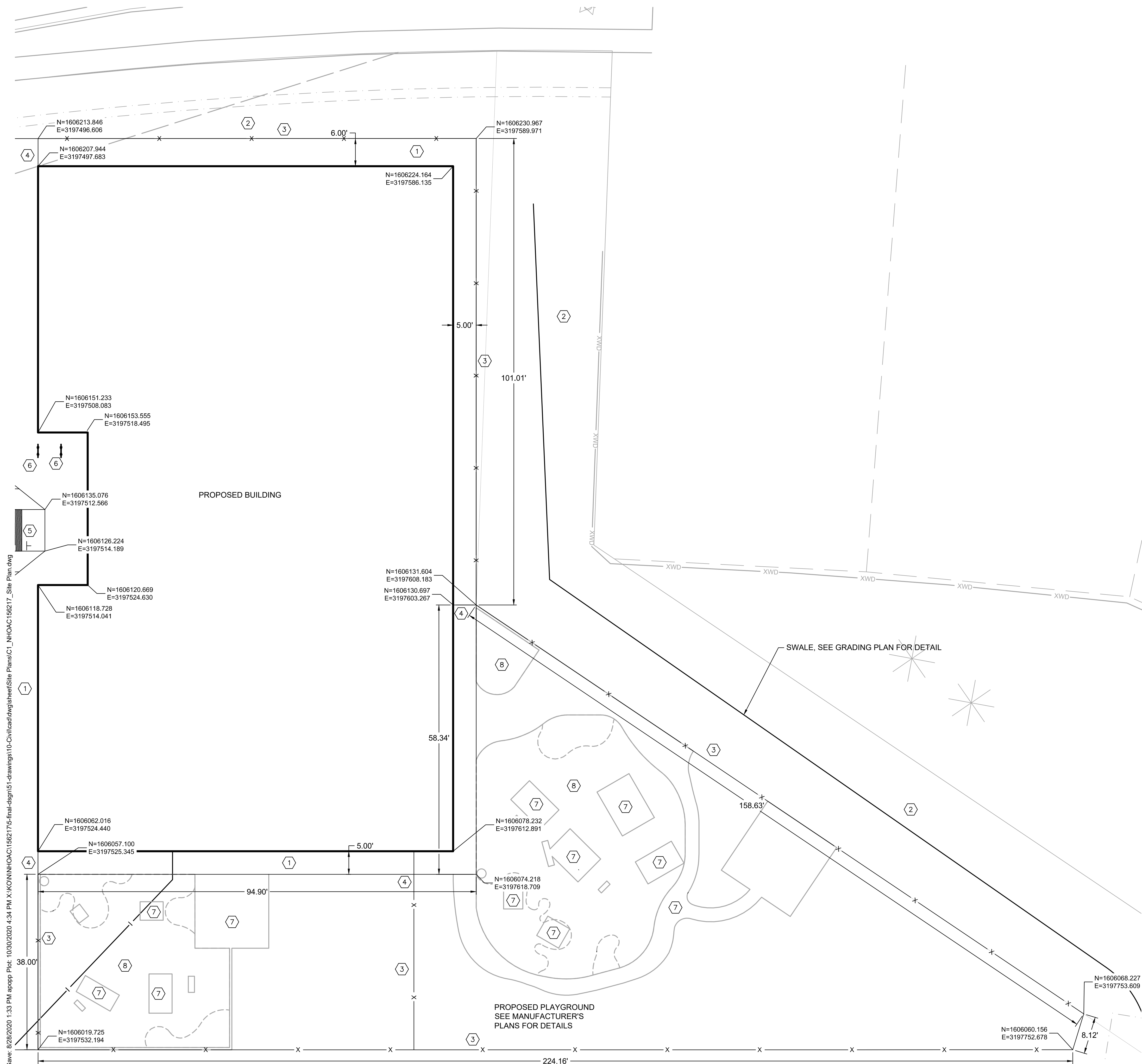
Project Status TOWN REVIEW
Issue Date 8/26/2020

Revision Issue

Rev. # Description Date

BUILDING SITE LAYOUT

C1.2



KEY NOTES

- ① CONCRETE SIDEWALK (SEE PLAN FOR WIDTH), SEE DETAIL SHEET C1.5
- ② LANDSCAPE AREA, SEE SHEET L101
- ③ PLAYGROUND FENCE, SEE DETAIL SHEET C1.5
- ④ PLAYGROUND FENCE GATE, SEE MANUFACTURER'S DETAIL
- ⑤ CURB RAMP MID BLOCK CURB RAMP, SEE DETAIL SHEET C1.4
- ⑥ BIKE RACK, SEE DETAIL SHEET L101
- ⑦ CONCRETE PLAYGROUND SECTION, SEE DETAIL SHEET C1.5
- ⑧ AGGREGATE PLAYGROUND SECTION, SEE DETAIL SHEET C1.5

GENERAL NOTES

1. CURB LOCATIONS ARE AT THE BACK OF CURB UNLESS OTHERWISE NOTED.
2. ALL WORK SHALL BE DONE IN ACCORDANCE WITH THE PLANS AND TOWN OF PARKER SPECIFICATIONS.
3. ALL NECESSARY PERMITS AND APPROVALS FROM AGENCIES GOVERNING THIS WORK SHALL BE SECURED BY THE CONTRACTOR PRIOR TO BEGINNING CONSTRUCTION.
4. SITE CONTRACTOR IS RESPONSIBLE FOR PROTECTION OF ALL PROPERTY CORNERS AND REPLACEMENT OF ALL PINS ELIMINATED OR DAMAGED DURING CONSTRUCTION.
5. SITE CONTRACTOR SHALL MATCH EXISTING PAVING AND CURB & GUTTER THAT WILL NOT BE REMOVED, IN GRADE AND ALIGNMENT.
6. ANY CURB & GUTTER OR SIDEWALK DAMAGED DURING CONSTRUCTION SHALL BE REPLACED BY SITE CONTRACTOR.

TOWN OF PARKER APPROVAL

THE TOWN OF PARKER REVIEW CONSTITUTES GENERAL COMPLIANCE WITH THE TOWN'S STANDARDS AND APPROVED VARIANCES, SUBJECT TO THESE PLANS BEING STAMPED, SIGNED, AND DATED BY THE PROFESSIONAL ENGINEER OF RECORD. REVIEW BY THE TOWN DOES NOT CONSTITUTE APPROVAL OF THE PLAN DESIGN OR ACCURACY AND CORRECTNESS OF ENGINEERING CALCULATIONS. ERRORS IN THE DESIGN OR CALCULATIONS REMAIN THE RESPONSIBILITY OF THE REGISTERED PROFESSIONAL ENGINEER WHOSE STAMP AND SIGNATURE ARE AFFIXED TO THIS DOCUMENT.

THIS REVIEW DOES NOT CONSTITUTE APPROVAL OF ANY PRIVATE ON-SITE IMPROVEMENTS WHICH MAY BE CONSTRUCTION CANNOT COMMENCE UNTIL ALL REQUIRED DRAINAGE/TRAFFIC REPORT(S), FINAL DEVELOPMENT PLAN(S), SPECIAL REVIEW(S), GRADING PERMIT, AND/OR OTHER PERMITS ARE COMPLETE, APPROVED AND ON FILE WITH THE TOWN OF PARKER.

TOWN OF PARKER, DIRECTOR OF ENGINEERING/PUBLIC WORKS DATE

Save: 8/26/2020 1:33 PM appopp Plot: 10/30/2020 4:34 PM X:\K\N\NHOAC\156217\Final-dsgn\51-drawings\10-Civil\card.dwg sheet\Site Plans\C1_NHOAC 156217_Site Plan.dwg

**NOT FOR
CONSTRUCTION**

Owner
New Horizon Academy
3405 Annapolis Lane
N, Suite 100
Plymouth, MN 55447
763.557.1111

Architect
Short Elliott Hendrickson, Inc.
2000 South Colorado Boulevard
Tower One, Suite 6000
Denver, Colorado 80222
720.540.6800

Landscape Architect
Short Elliott Hendrickson, Inc.
Suite 300
Minnetonka, MN 55343
952.912.2600

Civil Engineer
Short Elliott Hendrickson, Inc.
418 West Superior Street
Suite 200
Duluth, MN 55802
218.279.3000

Structural Engineer

Mechanical Engineer

Electrical Engineer

New Horizon Academy
**NEW HORIZON ACADEMY -
DOUGLAS 234 FILING, NO. X**
PARKER, CO

This drawing is an instrument of service and shall remain the property of Short Elliott Hendrickson, Inc. (SEH). This drawing and the concepts and ideas contained herein shall not be used, reproduced, revised, or retained without the express written approval of SEH.

Submission or distribution of this drawing to meet official or regulatory requirements or for other purposes in connection with the project is not to be construed as publication in derogation of any of the rights of SEH.

SEH Project NHOC 156217
Checked By DRH
Drawn By AMP

Project Status TOWN REVIEW
Issue Date 8/26/2020

Revision Issue

| Rev. # | Description | Date |
|--------|-------------|------|
| | | |

KEY NOTES

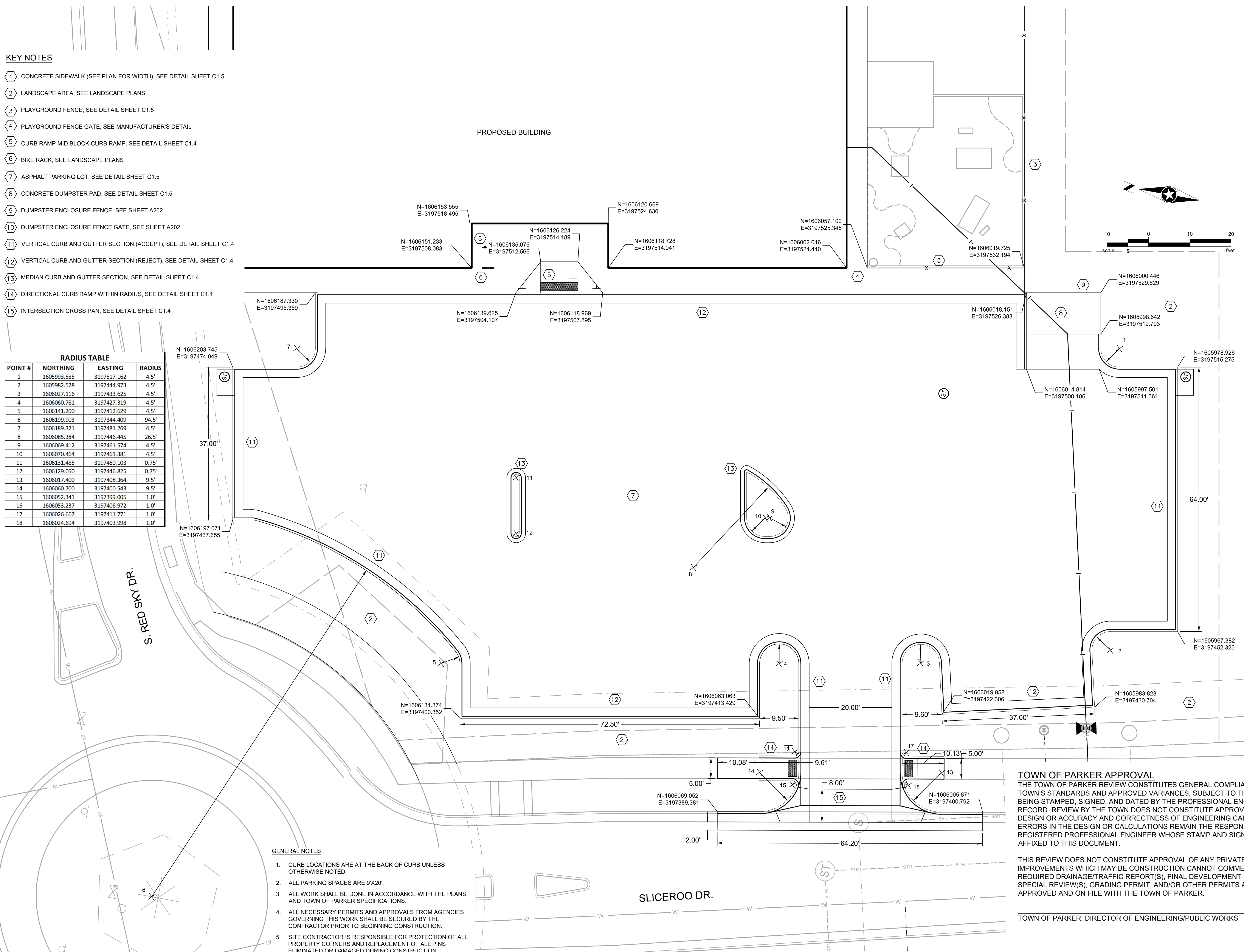
- ① CONCRETE SIDEWALK (SEE PLAN FOR WIDTH), SEE DETAIL SHEET C1.5
- ② LANDSCAPE AREA, SEE LANDSCAPE PLANS
- ③ PLAYGROUND FENCE, SEE DETAIL SHEET C1.5
- ④ PLAYGROUND FENCE GATE, SEE MANUFACTURER'S DETAIL
- ⑤ CURB RAMP MID BLOCK CURB RAMP, SEE DETAIL SHEET C1.4
- ⑥ BIKE RACK, SEE LANDSCAPE PLANS
- ⑦ ASPHALT PARKING LOT, SEE DETAIL SHEET C1.5
- ⑧ CONCRETE DUMPSTER PAD, SEE DETAIL SHEET C1.5
- ⑨ DUMPSTER ENCLOSURE FENCE, SEE SHEET A202
- ⑩ DUMPSTER ENCLOSURE FENCE GATE, SEE SHEET A202
- ⑪ VERTICAL CURB AND GUTTER SECTION (ACCEPT), SEE DETAIL SHEET C1.4
- ⑫ VERTICAL CURB AND GUTTER SECTION (REJECT), SEE DETAIL SHEET C1.4
- ⑬ MEDIAN CURB AND GUTTER SECTION, SEE DETAIL SHEET C1.4
- ⑭ DIRECTIONAL CURB RAMP WITHIN RADIUS, SEE DETAIL SHEET C1.4
- ⑮ INTERSECTION CROSS PAN, SEE DETAIL SHEET C1.4

| RADIUS TABLE | | | |
|--------------|-------------|-------------|--------|
| POINT # | NORTHING | EASTING | RADIUS |
| 1 | 1605993.585 | 3197517.162 | 4.5' |
| 2 | 1605982.528 | 3197444.973 | 4.5' |
| 3 | 1606027.116 | 3197433.625 | 4.5' |
| 4 | 1606060.781 | 3197427.319 | 4.5' |
| 5 | 1606141.200 | 3197412.629 | 4.5' |
| 6 | 1606199.903 | 3197344.409 | 94.5' |
| 7 | 1606189.321 | 3197481.269 | 4.5' |
| 8 | 1606085.384 | 3197446.445 | 26.5' |
| 9 | 1606069.412 | 3197461.574 | 4.5' |
| 10 | 1606070.464 | 3197461.381 | 4.5' |
| 11 | 1606131.485 | 3197460.103 | 0.75' |
| 12 | 1606129.050 | 3197446.825 | 0.75' |
| 13 | 1606017.400 | 3197408.364 | 9.5' |
| 14 | 1606060.700 | 3197400.543 | 9.5' |
| 15 | 1606052.341 | 3197399.005 | 1.0' |
| 16 | 1606053.237 | 3197406.972 | 1.0' |
| 17 | 1606026.667 | 3197411.771 | 1.0' |
| 18 | 1606024.694 | 3197403.998 | 1.0' |

GENERAL NOTES

1. CURB LOCATIONS ARE AT THE BACK OF CURB UNLESS OTHERWISE NOTED.
2. ALL PARKING SPACES ARE 9'X20'.
3. ALL WORK SHALL BE DONE IN ACCORDANCE WITH THE PLANS AND TOWN OF PARKER SPECIFICATIONS.
4. ALL NECESSARY PERMITS AND APPROVALS FROM AGENCIES GOVERNING THIS WORK SHALL BE SECURED BY THE CONTRACTOR PRIOR TO BEGINNING CONSTRUCTION.
5. SITE CONTRACTOR IS RESPONSIBLE FOR PROTECTION OF ALL PROPERTY CORNERS AND REPLACEMENT OF ALL PINS ELIMINATED OR DAMAGED DURING CONSTRUCTION.

Save: 8/26/2020 1:33 PM appop Plot: 10/30/2020 4:34 PM X:\K\O\N\NHOC\156217\Final\design\1-Civil\card.dwg sheet\Site Plans\C1_NHOC 156217_Site Plan.dwg



TOWN OF PARKER APPROVAL
THE TOWN OF PARKER REVIEW CONSTITUTES GENERAL COMPLIANCE WITH THE TOWN'S STANDARDS AND APPROVED VARIANCES, SUBJECT TO THESE PLANS BEING STAMPED, SIGNED, AND DATED BY THE PROFESSIONAL ENGINEER OF RECORD. REVIEW BY THE TOWN DOES NOT CONSTITUTE APPROVAL OF THE PLAN DESIGN OR ACCURACY AND CORRECTNESS OF ENGINEERING CALCULATIONS. ERRORS IN THE DESIGN OR CALCULATIONS REMAIN THE RESPONSIBILITY OF THE REGISTERED PROFESSIONAL ENGINEER WHOSE STAMP AND SIGNATURE ARE AFFIXED TO THIS DOCUMENT.

THIS REVIEW DOES NOT CONSTITUTE APPROVAL OF ANY PRIVATE ON-SITE IMPROVEMENTS WHICH MAY BE CONSTRUCTION CANNOT COMMENCE UNTIL ALL REQUIRED DRAINAGE/TRAFFIC REPORT(S), FINAL DEVELOPMENT PLAN(S), SPECIAL REVIEW(S), GRADING PERMIT, AND/OR OTHER PERMITS ARE COMPLETE, APPROVED AND ON FILE WITH THE TOWN OF PARKER.

TOWN OF PARKER, DIRECTOR OF ENGINEERING/PUBLIC WORKS DATE

**NOT FOR
CONSTRUCTION**

Owner
New Horizon Academy
3405 Annapolis Lane
N., Suite 100
Plymouth, MN 55447
763.557.1111

Architect
Short Elliott Hendrickson, Inc.
2000 South Colorado Boulevard
Tower One, Suite 6000
Denver, Colorado 80222
720.540.6800

Landscape Architect
Short Elliott Hendrickson, Inc.
19501 Red Circle Drive
Suite 300
Minnetonka, MN 55343
952.912.2600

Civil Engineer
Short Elliott Hendrickson, Inc.
418 West Superior Street
Suite 200
Duluth, MN 55802
218.279.3000

Structural Engineer

Mechanical Engineer

Electrical Engineer

**NEW HORIZON ACADEMY -
DOUGLAS 234 FILING, NO. X
PARKER, CO**

This drawing is an instrument of service and shall remain the property of Short Elliott Hendrickson, Inc. (SEH). This drawing and the concepts and ideas contained herein shall not be used, reproduced, revised, or retained without the express written approval of SEH.

Submission or distribution of this drawing to meet official or regulatory requirements or for other purposes in connection with the project is not to be construed as publication in derogation of any of the rights of SEH.

SEH Project: NHOC 156217
Checked By: DRH
Drawn By: AMP

Project Status: TOWN REVIEW
Issue Date: 8/26/2020

Revision Issue

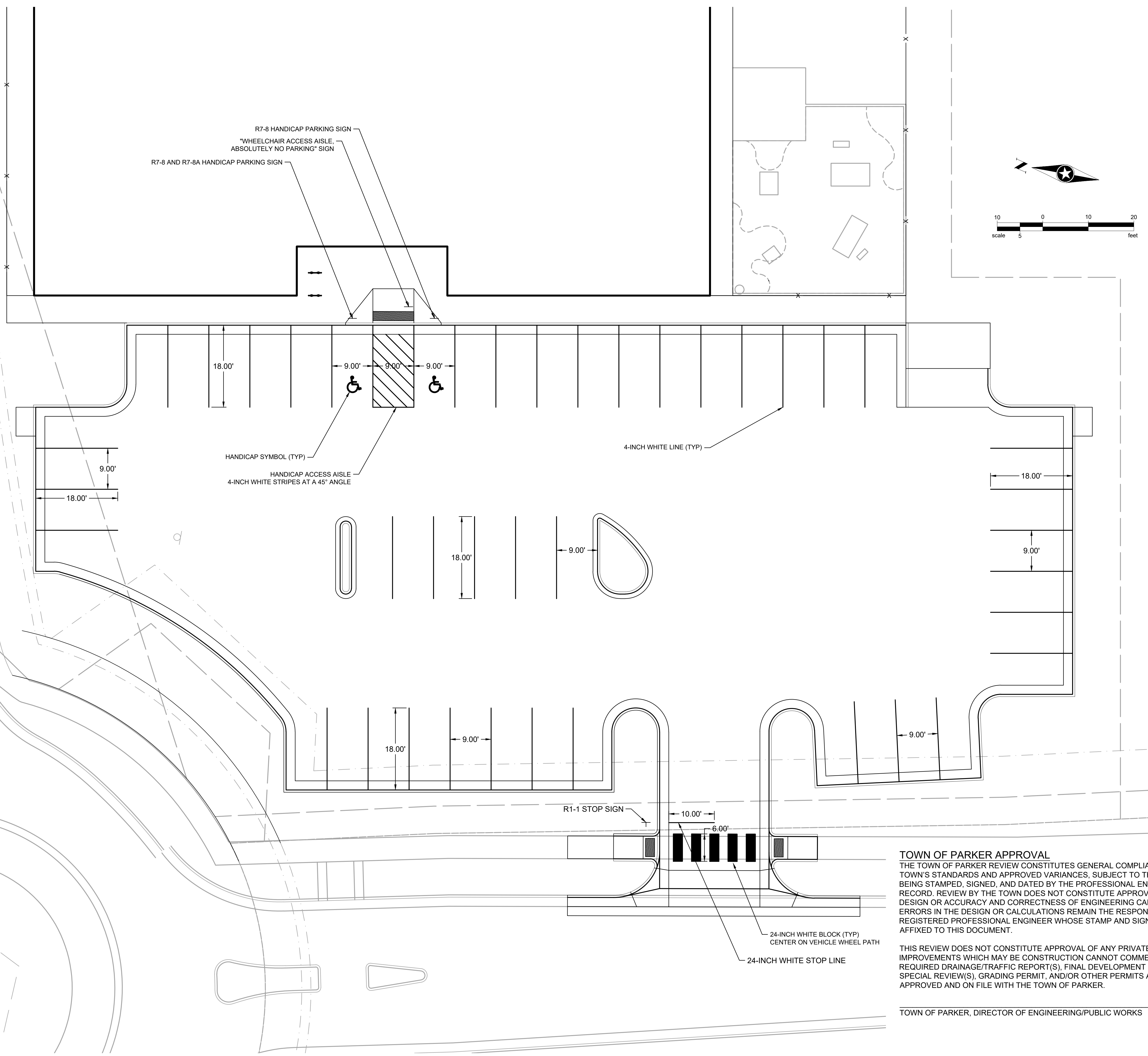
| Rev. # | Description | Date |
|--------|-------------|------|
| | | |

SIGNAGE PLAN

C5.0

Save: 8/25/2020 2:10 PM appop Plot: 10/30/2020 4:36 PM X:\KON\NHOC\156217\Final\design\1-Civil\cad.dwg\sheet\Site Plans\C5_NHOC 156217_Signage Plan.dwg

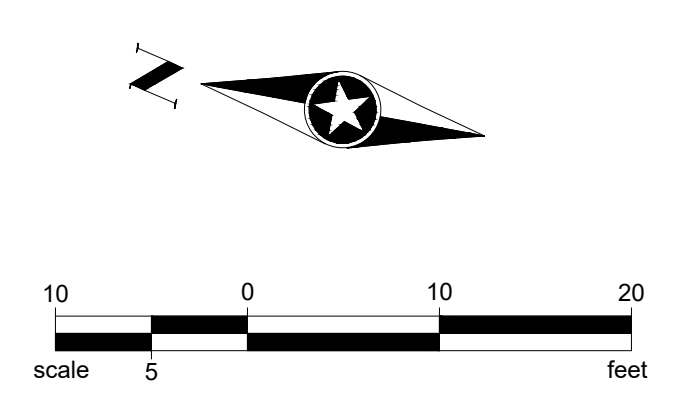
NOTE:
ALL PARKING STALLS ARE 9' X 18'



TOWN OF PARKER APPROVAL
THE TOWN OF PARKER REVIEW CONSTITUTES GENERAL COMPLIANCE WITH THE TOWN'S STANDARDS AND APPROVED VARIANCES, SUBJECT TO THESE PLANS BEING STAMPED, SIGNED, AND DATED BY THE PROFESSIONAL ENGINEER OF RECORD. REVIEW BY THE TOWN DOES NOT CONSTITUTE APPROVAL OF THE PLAN DESIGN OR ACCURACY AND CORRECTNESS OF ENGINEERING CALCULATIONS. ERRORS IN THE DESIGN OR CALCULATIONS REMAIN THE RESPONSIBILITY OF THE REGISTERED PROFESSIONAL ENGINEER WHOSE STAMP AND SIGNATURE ARE AFFIXED TO THIS DOCUMENT.

THIS REVIEW DOES NOT CONSTITUTE APPROVAL OF ANY PRIVATE ON-SITE IMPROVEMENTS WHICH MAY BE CONSTRUCTION CANNOT COMMENCE UNTIL ALL REQUIRED DRAINAGE/TRAFFIC REPORT(S), FINAL DEVELOPMENT PLAN(S), SPECIAL REVIEW(S), GRADING PERMIT, AND/OR OTHER PERMITS ARE COMPLETE, APPROVED AND ON FILE WITH THE TOWN OF PARKER.

TOWN OF PARKER, DIRECTOR OF ENGINEERING/PUBLIC WORKS _____ DATE _____



**NOT FOR
CONSTRUCTION**

Owner
New Horizon Academy
3405 Annapolis Lane
N., Suite 100
Plymouth, MN 55447
763.557.1111

Architect
Short Elliott Hendrickson, Inc.
2000 South Colorado Boulevard
Tower One, Suite 6000
Denver, Colorado 80222
720.540.6800

Landscape Architect
Short Elliott Hendrickson, Inc.
10901 Red Circle Drive
Suite 300
Minnetonka, MN 55343
952.912.2600

Civil Engineer
Short Elliott Hendrickson, Inc.
418 West Superior Street
Suite 200
Duluth, MN 55802
218.279.3000

Structural Engineer

Mechanical Engineer

Electrical Engineer

**NEW HORIZON ACADEMY -
CHAMBERS & HESS**
PARKER, CO

This drawing is an instrument of service and shall remain the property of Short Elliott Hendrickson, Inc. (SEH). This drawing and the concepts and ideas contained herein shall not be used, reproduced, revised, or retained without the express written approval of SEH.

Submission or distribution of this drawing to meet official or regulatory requirements or for other purposes in connection with the project is not to be construed as publication or delegation of any of the rights of SEH.

SEH Project: NHOAC 156217
Checked By: KW
Drawn By: VT

Project Status: Issue Date

Revision Issue

Rev. # Description Date

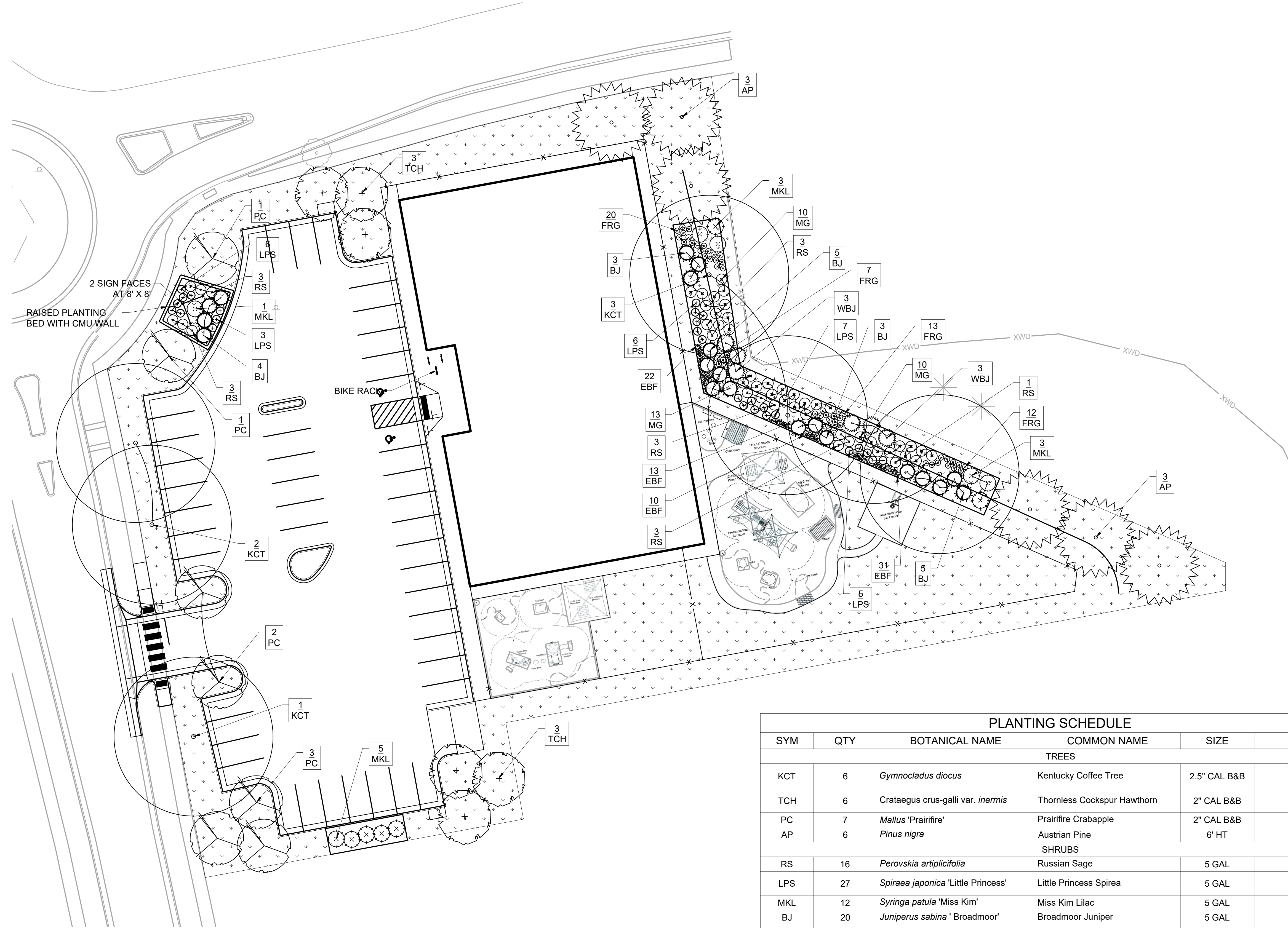
Project Status: Issue Date

Revision Issue

Rev. # Description Date

LANDSCAPE PLAN

L1.01



1 LANDSCAPE PLAN
SCALE: 1" = 20'-0"

| PLANTING SCHEDULE | | | | | |
|--------------------|-----|---|----------------------------------|--------------|-------|
| SYM | QTY | BOTANICAL NAME | COMMON NAME | SIZE | NOTES |
| TREES | | | | | |
| KCT | 6 | <i>Gymnocladus dioica</i> | Kentucky Coffee Tree | 2.5" CAL B&B | |
| TCH | 6 | <i>Crataegus crus-galli</i> var. <i>inermis</i> | Thornless Cockspur Hawthorn | 2" CAL B&B | |
| PC | 7 | <i>Mallus 'Prairifire'</i> | Prairifire Crabapple | 2" CAL B&B | |
| AP | 6 | <i>Pinus nigra</i> | Austrian Pine | 6' HT | |
| SHRUBS | | | | | |
| RS | 16 | <i>Perovskia artemisiifolia</i> | Russian Sage | 5 GAL | |
| LPS | 27 | <i>Spiraea japonica</i> 'Little Princess' | Little Princess Spirea | 5 GAL | |
| MKL | 12 | <i>Syringa patula</i> 'Miss Kim' | Miss Kim Lilac | 5 GAL | |
| BJ | 20 | <i>Juniperus sabina</i> 'Broadmoor' | Broadmoor Juniper | 5 GAL | |
| WBJ | 6 | <i>Juniperus scopulorum</i> 'Wichita Blue' | Wichita Blue Juniper | 5 GAL | |
| ORNAMENTAL GRASSES | | | | | |
| FRG | 52 | <i>Calamagrostis acutiflora</i> 'Karl Foerster' | Karl Foerster Feather Reed Grass | 1 GAL | |
| EBF | 76 | <i>Festuca glauca</i> 'Elijah Blue' | Elijah Blue Fescue | 1 GAL | |
| MG | 33 | <i>Miscanthus sinensis</i> 'Gracillimus' | Maiden Grass | 1 GAL | |

Turf Seed Mixture: Seed mixture to contain native grasses such as Blue Grama and Buffalo Grass

X:\WORK\PROJECTS\156217\FINAL\050815\DRAWINGS\LANDSCAPE\LANDSCAPE PLAN\NHOAC156217_L1_2020.10.22.DWG (1/15/2020 4:01 PM)



Building a Better World
for All of Us

**NOT FOR
CONSTRUCTION**

Owner
New Horizon Academy
3405 Annapolis Lane
N., Suite 100
Plymouth, MN 55447
763.557.1111

Architect
Short Elliott Hendrickson, Inc.
2000 South Colorado Boulevard
Tower One, Suite 6000
Denver, Colorado 80222
720.540.6800

Landscape Architect
Short Elliott Hendrickson, Inc.
10901 Red Circle Drive
Suite 300
Minnetonka, MN 55343
952.912.2600

Civil Engineer
Short Elliott Hendrickson, Inc.
418 West Superior Street
Suite 200
Duluth, MN 55802
218.279.3000

Structural Engineer

Mechanical Engineer

Electrical Engineer

New Horizon Academy
**NEW HORIZON ACADEMY -
CHAMBERS & HESS**
PARKER, CO

This drawing is an instrument of service and shall remain the property of Short Elliott Hendrickson, Inc. (SEH). This drawing and the concepts and ideas contained herein shall not be used, reproduced, revised, or retained without the express written approval of SEH.

Submission or distribution of this drawing to meet official or regulatory requirements or for other purposes in connection with the project is not to be construed as publication in derogation of any of the rights of SEH.

SEH Project NHOAC 156217
Checked By KW
Drawn By VT

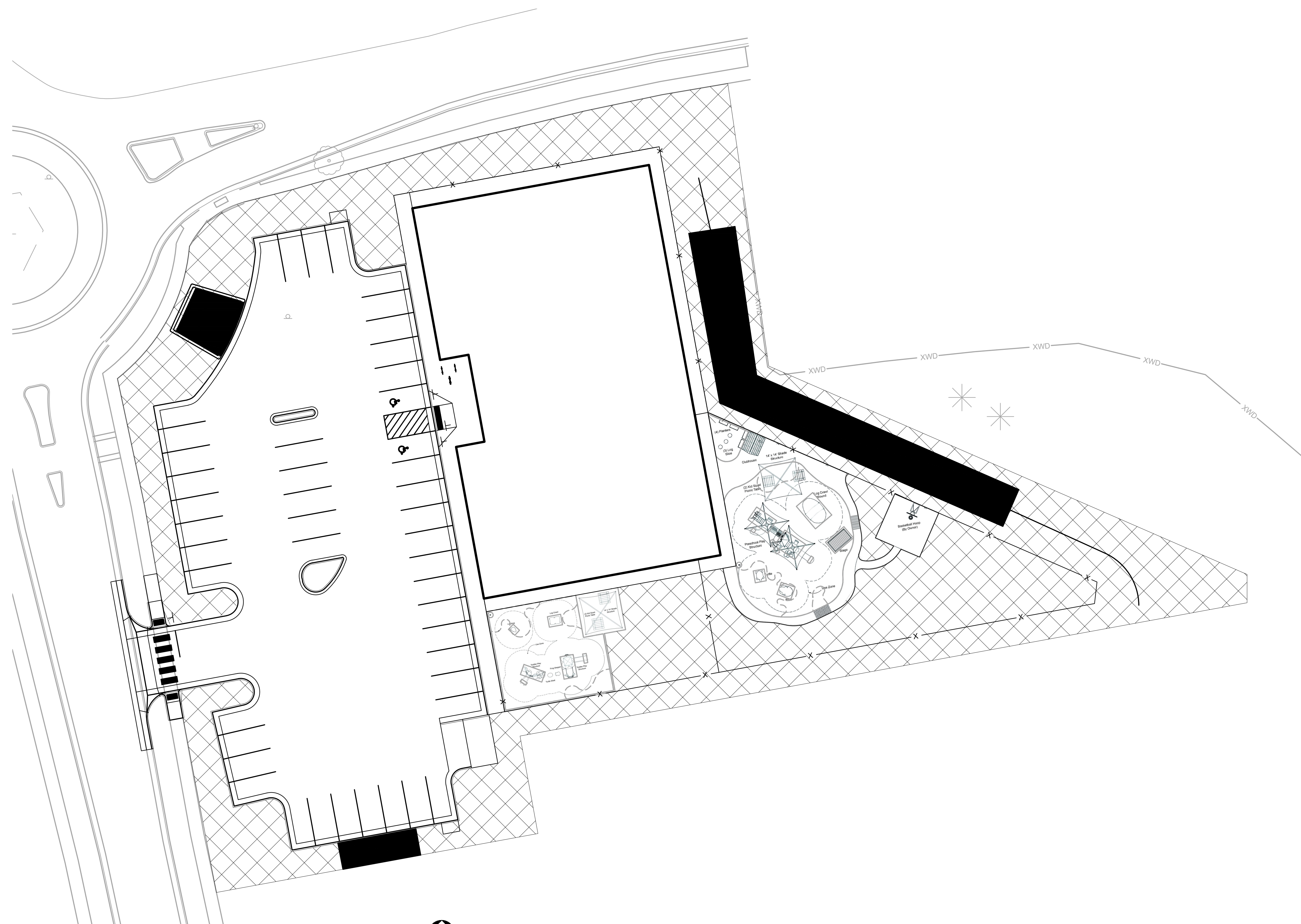
Project Status Issue Date

Revision Issue

Rev. # Description Date

IRRIGATION DIAGRAM

L1.02



1 IRRIGATION DIAGRAM
SCALE: 1" = 20'-0"
0' 10' 20' 40' 80'



DRIP IRRIGATION
 SPRINKLER HEADS

X:\WORK\PROJECTS\156217\FINAL\050815\DRAWINGS\252\FINAL\NHOAC156217_L1_2020.10.22.DWG (1/15/2020 4:01 PM)

**NOT FOR
CONSTRUCTION**

Owner
New Horizon Academy
3405 Annapolis Lane
N., Suite 100
Plymouth, MN 55447
763.557.1111

Architect
Short Elliott Hendrickson, Inc.
2000 South Colorado Boulevard
Tower One, Suite 6000
Denver, Colorado 80222
720.540.6800

Landscape Architect
Short Elliott Hendrickson, Inc.
10901 Red Circle Drive
Suite 300
Minnetonka, MN 55343
952.912.2600

Civil Engineer
Short Elliott Hendrickson, Inc.
418 West Superior Street
Suite 200
Duluth, MN 55802
218.279.3000

Structural Engineer

Mechanical Engineer

Electrical Engineer

**NEW HORIZON ACADEMY -
CHAMBERS & HESS**
PARKER, CO

This drawing is an instrument of service and shall remain the property of Short Elliott Hendrickson, Inc. (SEH). This drawing and the concepts and ideas contained herein shall not be used, reproduced, revised, or retained without the express written approval of SEH.

Submission or distribution of this drawing to meet official or regulatory requirements or for other purposes in connection with the project is not to be construed as publication in derogation of any of the rights of SEH.

SEH Project: NHDAC 152817
Checked By: KW
Drawn By: VT

Project Status: Issue Date:

Revision Issue

Rev. # Description Date

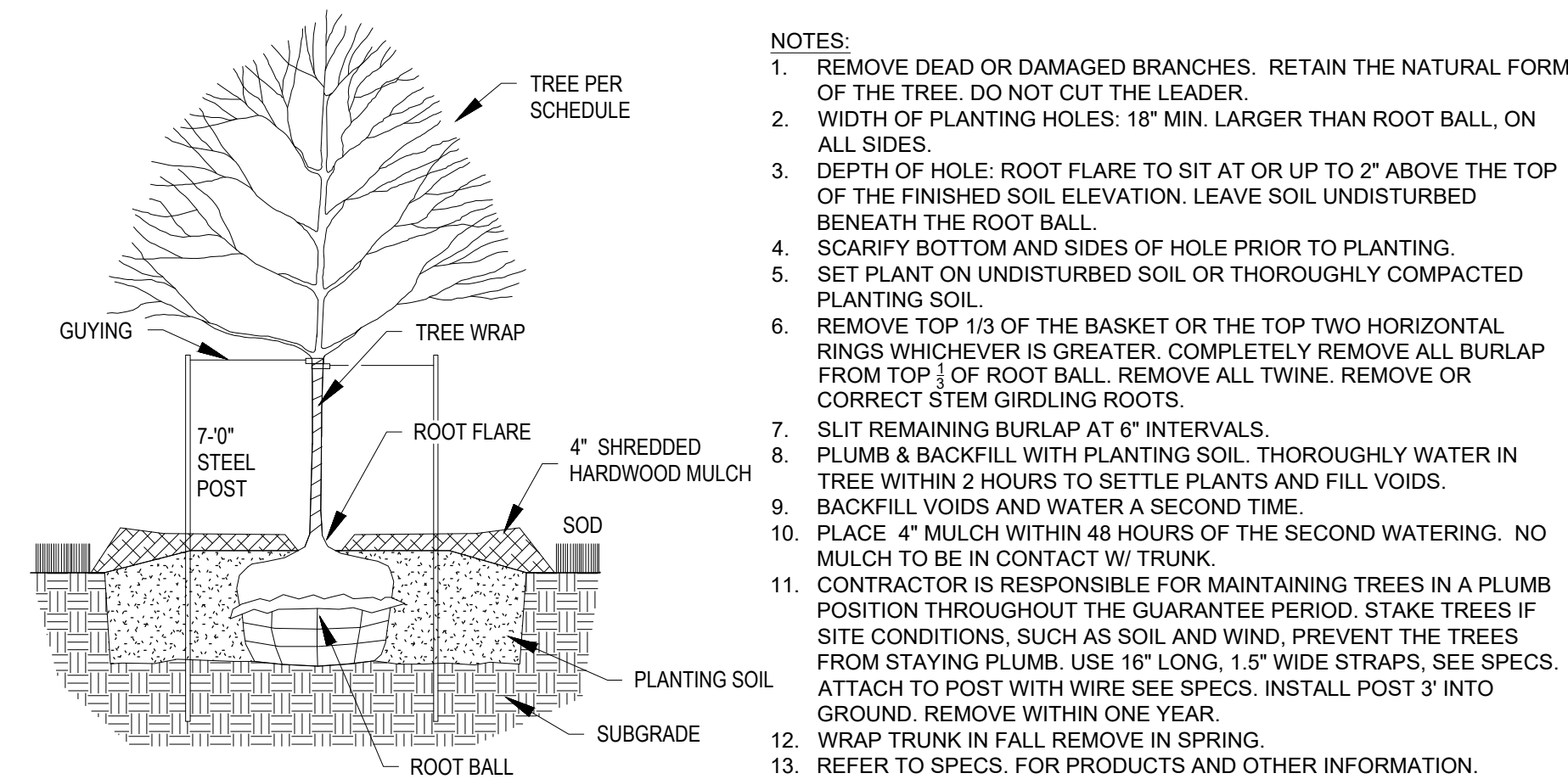
LANDSCAPE DETAILS

L1.03

LANDSCAPE SPECIFICATIONS

TREES, SHRUBS, AND PERENNIALS

1. REFERENCES
 - A. CDOT - COLORADO DEPARTMENT OF TRANSPORTATION, 2017 EDITION.
 - B. AMERICAN STANDARD FOR NURSERY STOCK, ANSI Z60.1-2014.
2. QUALITY ASSURANCE
 - A. WORK SHALL BE PERFORMED BY A LANDSCAPE CONTRACTOR WITH EXTENSIVE HORTICULTURE KNOWLEDGE, AND A MIN. OF 3 YEARS EXPERIENCE.
 - B. HANDLE PLANTS IN SUCH A WAY AS TO PROTECT FROM DAMAGE EITHER PHYSICAL OR BY EXPOSURE TO SUN AND WIND. MISHANDLED PLANTS ARE SUBJECT TO REJECTION BY LANDSCAPE ARCHITECT.
 - C. PLANTS USED ON THIS PROJECT SHALL MEET THE GRADING STANDARDS RECOMMENDED BY THE ANSI Z60.1-2014.
3. PRODUCTS
 - A. PLANTS: PROVIDE AS SPECIFIED ON PLANT SCHEDULE.
 - B. EDGING: RYERSON STEEL EDGING 3/8" X 5" W/ 18" STAKES, OR EQUAL.
 - C. MULCH: SHREDDED CEDAR FIBER MULCH, APPLIED A MINIMUM OF FOUR INCHES IN DEPTH, INSTALLED OVER A BASE OF GEOTEXTILE FABRIC.
 - D. WATER: CONTRACTOR TO PROVIDE.
 - E. PLANTING SOIL MIX: RICH SANDY LOAM, FREE OF DEBRIS AND SEEDS, AND CONFORMING TO CDOT 207 (TOPSOIL).
 - F. SOIL AMENDMENTS: CONFORMING TO CDOT 212 (SEEDING, FERTILIZER, SOIL CONDITIONS AND SODDING).
 - G. TREE WRAP: TWO-PLY WEATHER RESISTANT PAPER PRODUCT.
4. PLANTING DATES: SPRING PLANTING: APR. 1- JUNE 15. THESE DATES MAY BE EXTENDED IF DAYTIME TEMPS. REMAIN BELOW 80 DEGREES. FALL: SEPT. 30 - OCT. 30TH. DAYTIME TEMPS. NEED TO DROP BELOW 80 DEGREES BEFORE PLANTING BEGINS. AND MAY CONTINUE UNTIL FREEZE UP. CONIFEROUS TREES AUG.15- OCT. 1ST. PLANT UNDER FAVORABLE WEATHER CONDITIONS, DO NO PLANT DURING DAYS OF EXTREME HEAT.
5. EXECUTION
 - A. PLANT INTO PREPARED PLANTING BEDS.
 - B. PRIOR TO DIGGING, CONTRACTOR TO HAVE UTILITIES LOCATED AND MARKED.
 - C. CONTRACTOR TO NOTIFY LANDSCAPE ARCHITECT 3 DAYS IN ADVANCE OF WHEN PLANTING WORK WILL OCCUR.
 - D. INSTALL TREES, SHRUBS, AND PERENNIALS PER PLANTING DETAILS. ADJUST LOCATION IF IN CONFLICT WITH UTILITIES. VERIFY NEW LOCATION WITH LANDSCAPE ARCHITECT PRIOR TO PLANTING.
 - E. SEPARATE ALL SHRUB BEDS FROM SOD AREAS WITH METAL EDGER.
 - F. CLEAN-UP ENTIRE SITE FOLLOWING PLANTING OPERATIONS.
6. ACCEPTANCE OF PLANTING WORK
 - A. CONTRACTOR TO NOTIFY OWNER WHEN PLANTING WORK IS COMPLETE FOR REVIEW AND PUNCH LIST.
 - B. CONTRACTOR TO WATER AND MAINTAIN THE TREES, SHRUBS, AND PERENNIALS UNTIL OWNER ACCEPTANCE.
 - C. OWNER WILL GIVE ACCEPTANCE OF WORK, FOLLOWING SATISFACTORY CORRECTION OF PUNCH LIST ITEMS.
 - D. WATERING AND REGULAR LANDSCAPE MAINTENANCE OF TREES, SHRUBS, AND PERENNIALS WILL BE OWNERS RESPONSIBILITY FOLLOWING OWNER ACCEPTANCE OF WORK.
7. GUARANTEE PERIOD
 - A. CONTRACTOR TO WARRANTY TREES, SHRUBS, AND PERENNIALS FOR TWO YEARS FOLLOWING ACCEPTANCE OF WORK BY OWNER.
 - B. CONTRACTOR TO MAINTAIN THE TREES IN A PLUMB POSITION THROUGHOUT THE GUARANTEE PERIOD.
 - C. CONTRACTOR TO REMOVE ALL STAKING/ WIRING/ STRAPS FROM FREES AT THE END OF THE GUARANTEE PERIOD.
 - D. REPLACEMENTS: AT THE END OF THE GUARANTEE PERIOD, ALL PLANTS WHICH ARE UNHEALTHY, DEAD, NOT HAVING A NORMAL DENSITY, SIZE, SHAPE OR COLOR SHALL BE REPLACED. REPLACEMENTS SHALL MATCH CALIPER AND/OR HEIGHT OF THE OTHER PLANTS AT TIME OF REPLACEMENT. SELECTION OF REPLACEMENT MATERIAL AND INSTALLATION PRACTICES SHALL FOLLOW THE REQUIREMENTS OF THE DRAWINGS AND SPECIFICATIONS.
8. IRRIGATION
 - A. CONFORM TO THE REQUIREMENTS OF CDOT 107.14 (INTERRUPTION OF IRRIGATION WATER FLOW), CDOT 623 (IRRIGATION SYSTEM) AND ALL OTHER APPLICABLE CDOT IRRIGATION MATERIALS AND CONSTRUCTION REQUIREMENTS.

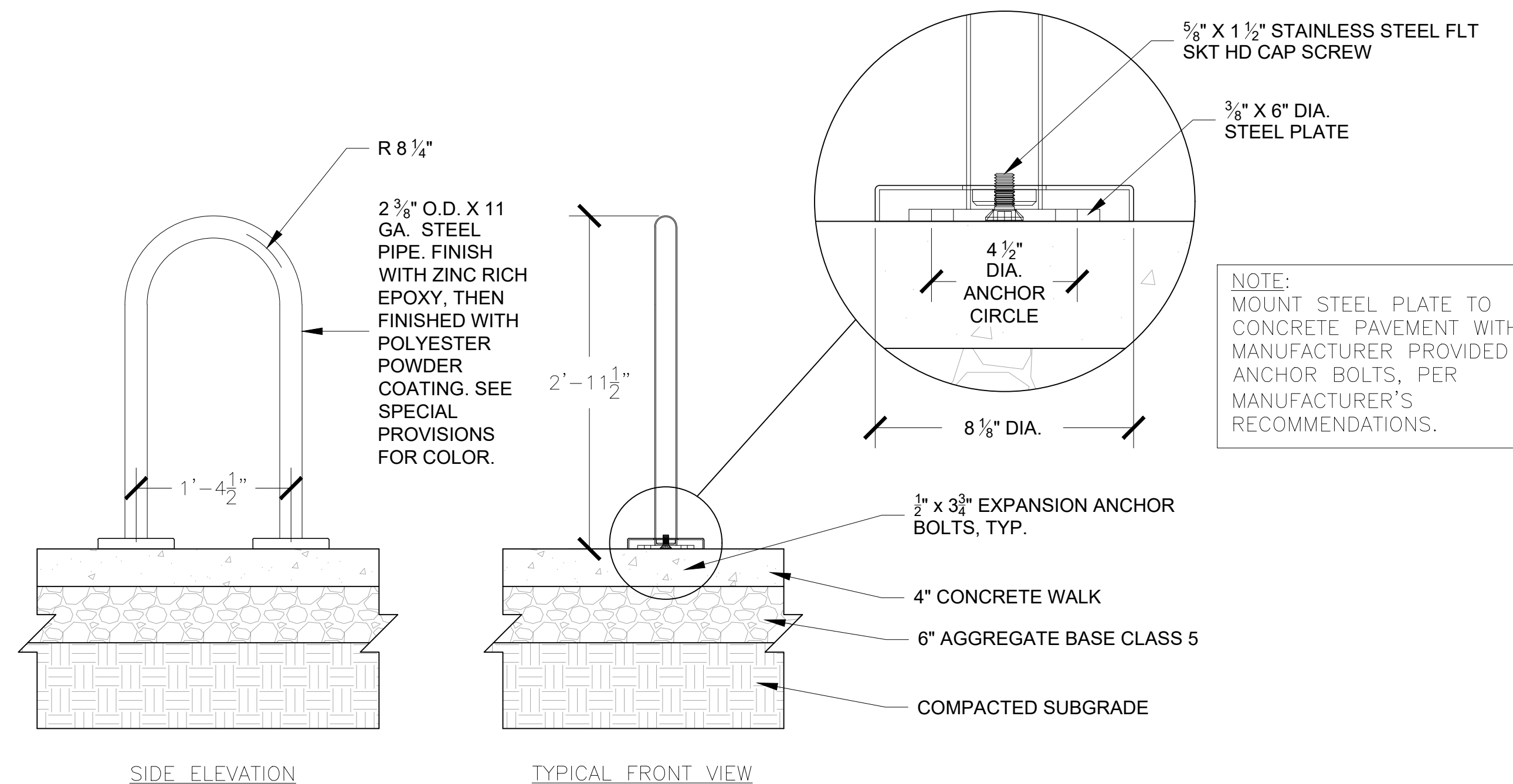


1 TREE PLANTING DETAIL

NOT TO SCALE

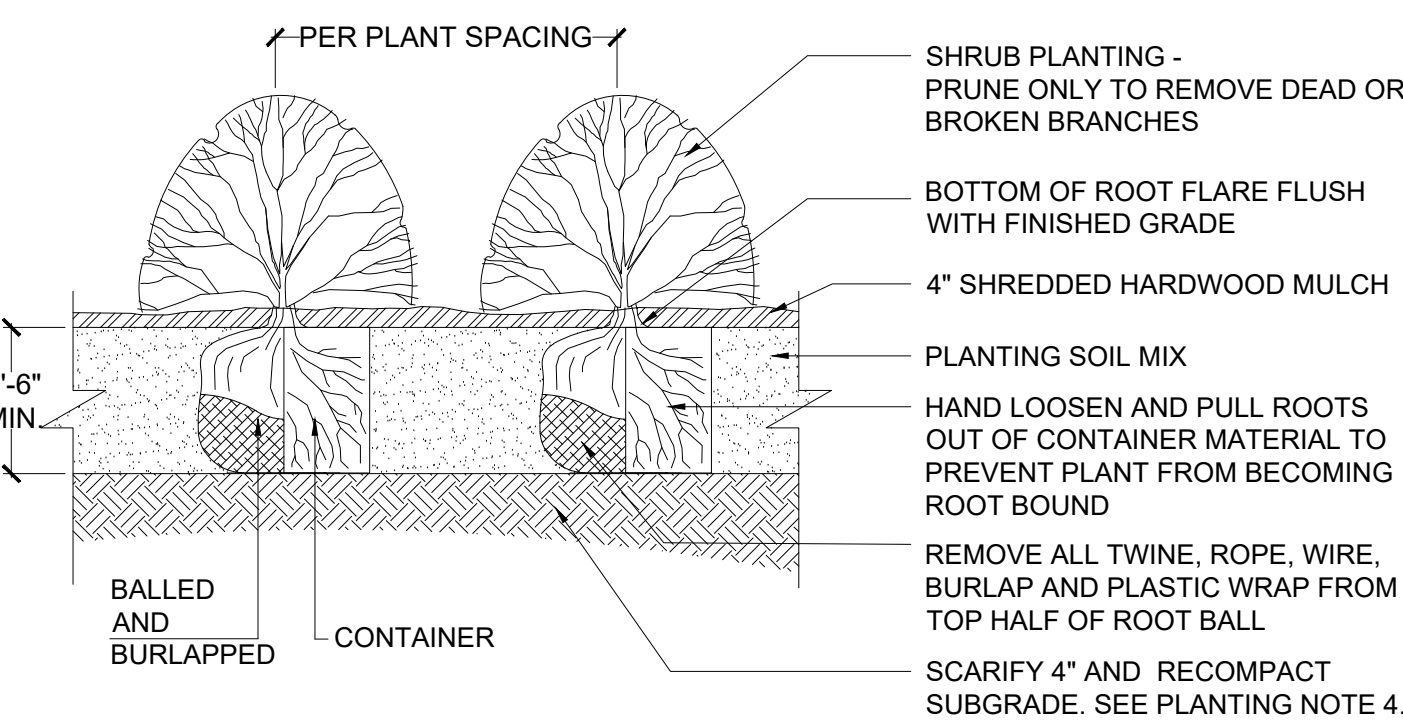
NOTES:

1. REMOVE DEAD OR DAMAGED BRANCHES. RETAIN THE NATURAL FORM OF THE TREE. DO NOT CUT THE LEADER.
2. WIDTH OF PLANTING HOLES: 18" MIN. LARGER THAN ROOT BALL, ON ALL SIDES.
3. DEPTH OF HOLE: ROOT FLARE TO SIT AT OR UP TO 2" ABOVE THE TOP OF THE FINISHED SOIL ELEVATION. LEAVE SOIL UNDISTURBED BENEATH THE ROOT BALL.
4. SCARIFY BOTTOM AND SIDES OF HOLE PRIOR TO PLANTING.
5. SET PLANT ON UNDISTURBED SOIL OR THOROUGHLY COMPACTED PLANTING SOIL.
6. REMOVE TOP 1/3 OF THE BASKET OR THE TOP TWO HORIZONTAL RINGS WHICHEVER IS GREATER. COMPLETELY REMOVE ALL BURLAP FROM TOP 1/3 OF ROOT BALL. REMOVE ALL TWINE. REMOVE OR CORRECT STEM GIRDLING ROOTS.
7. SLIT REMAINING BURLAP AT 6" INTERVALS.
8. PLUMB & BACKFILL WITH PLANTING SOIL. THOROUGHLY WATER IN TREE WITHIN 2 HOURS TO SETTLE PLANTS AND FILL VOIDS.
9. BACKFILL VOIDS AND WATER A SECOND TIME.
10. PLACE 4" MULCH WITHIN 48 HOURS OF THE SECOND WATERING. NO MULCH TO BE IN CONTACT W/ TRUNK.
11. CONTRACTOR IS RESPONSIBLE FOR MAINTAINING TREES IN A PLUMB POSITION THROUGHOUT THE GUARANTEE PERIOD. STAKE TREES IF SITE CONDITIONS, SUCH AS SOIL AND WIND, PREVENT THE TREES FROM STAYING PLUMB. USE 16" LONG, 1 1/2" WIDE STRAPS, SEE SPECS. ATTACH TO POST WITH WIRE SEE SPECS. INSTALL POST 3" INTO GROUND. REMOVE WITHIN ONE YEAR.
12. WRAP TRUNK IN FALL REMOVE IN SPRING.
13. REFER TO SPECS. FOR PRODUCTS AND OTHER INFORMATION.



3 BIKE RACK DETAIL

NOT TO SCALE



2 SHRUB PLANTING DETAIL

NOT TO SCALE

LANDSCAPING SHALL BE PLANTED AND MAINTAINED IN A NEAT, CLEAN AND HEALTHY CONDITION BY THE OWNER. THIS SHALL INCLUDE PROPER PRUNING, MOVING AND AERATION OF LAWNS, REPLACEMENT OF MULCH, WEEDING, REMOVAL OF LITTER AND THE REGULAR WATERING OF ALL PLANTINGS. IRRIGATION SHALL BE MAINTAINED TO MAXIMIZE WATER CONSUMPTION. SHOULD ANY PLANT MATERIAL DIE, THE OWNER, SUCCESSOR, OR ASSIGNS SHALL BE RESPONSIBLE FOR THE REPLACEMENT OF PLANT(S) WITHIN ONE PLANTING SEASON. REPLACEMENT OF PLANT MATERIALS SHALL OCCUR AT THE FOLLOWING RATE.

| TYPE | PLANT REPLACEMENT WITHIN | |
|------------------|---|---|
| | 1 YEAR | 2+ YEARS |
| TREE- DECIDUOUS | INCREASE CALIPER BY 1" | INCREASE CALIPER BY 1.5" |
| TREE- CONIFEROUS | INCREASE HEIGHT BY 1.5' | INCREASE HEIGHT BY 2' |
| SHRUB | REPLACE WITH PLANTS OF AT LEAST 1/2 MATURE SIZE | REPLACE WITH PLANTS OF AT LEAST 1/2 MATURE SIZE |

**NOT FOR
CONSTRUCTION**

Owner
New Horizon Academy
3405 Annapolis Lane
N., Suite 100
Plymouth, MN 55447
763.557.1111

Architect
Short Elliott Hendrickson, Inc.
2000 South Colorado Boulevard
Tower One, Suite 6000
Denver, Colorado 80222
720.540.6800

Landscape Architect
Short Elliott Hendrickson, Inc.
10501 Red Circle Drive
Suite 300
Minnetonka, MN 55343
952.912.2600

Civil Engineer
Short Elliott Hendrickson, Inc.
418 West Superior Street
Suite 200
Duluth, MN 55802
218.279.3000

Structural Engineer

Mechanical Engineer

Electrical Engineer

New Horizon Academy
**NEW HORIZON ACADEMY -
DOUGLAS XXX FILING, NO. X**
PARKER, CO

This drawing is an instrument of service and shall remain the property of Short Elliott Hendrickson, Inc. (SEH). This drawing and the concepts and ideas contained herein shall not be used, reproduced, revised, or retained without the express written approval of SEH.

Substitution or distribution of this drawing to meet official or regulatory requirements or for other purposes in connection with the project is not to be construed as publication in derogation of any of the rights of SEH.

Copyright © 2020
Short Elliott Hendrickson, Inc.
All Rights Reserved

SEH Project NHOAC 156217
Checked By
Drawn By

Project Status TOWN REVIEW
Issue Date 8/26/2020

Revision Issue

| Rev. # | Description | Date |
|--------|-------------|------|
| | | |

EXTERIOR ELEVATIONS



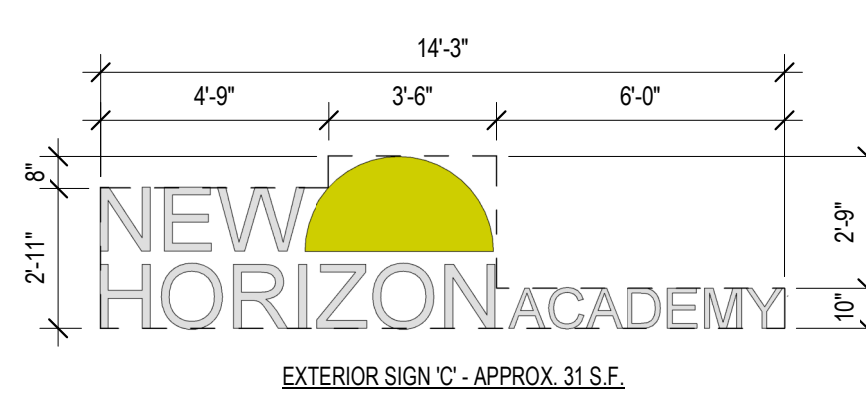
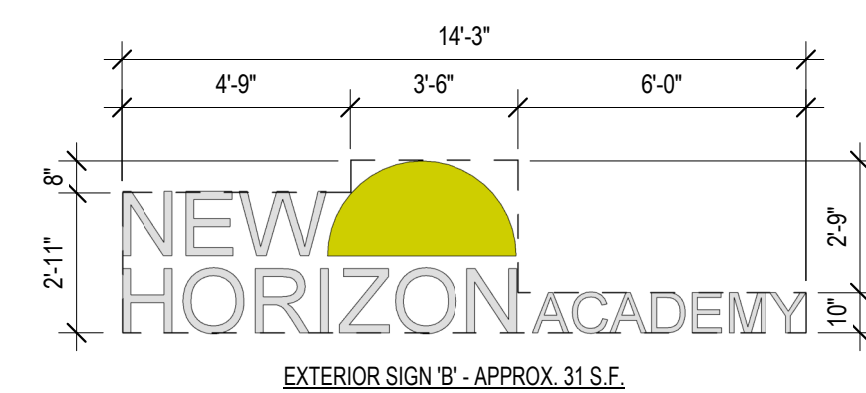
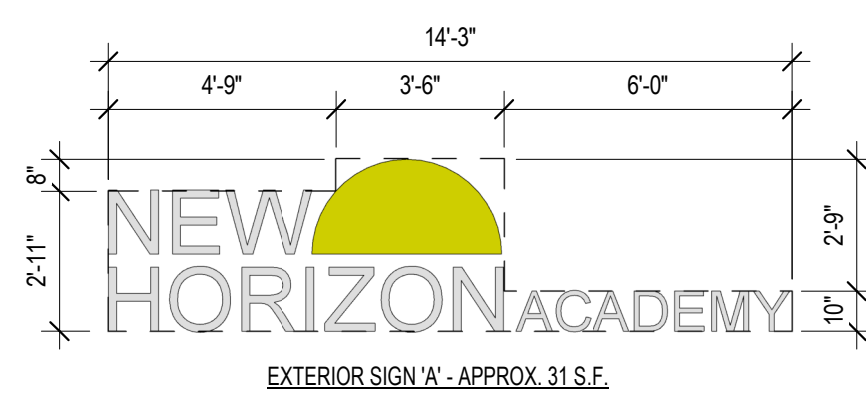
1 EAST ELEVATION
3/16" = 1'-0"



2 NORTH ELEVATION
3/16" = 1'-0"

ELEVATION KEY NOTES #

- STONE VENEER - SOUTHERN LEDGESTONE 'CHARDONNAY' BY CULTURED STONE
- WOOD SHAKE SIDING - HARDIESHINGLE - STRAIGHT EDGE PANEL 'NAVAJO BEIGE' BY JAMES HARDIE
- HORIZONTAL SIDING - HARDIEPLANK - SMOOTH - 'KHAKI BROWN' BY JAMES HARDIE
- BOARD AND BATTEN SIDING - HARDIEPANEL VERTICAL SIDING - SMOOTH - 'COBBLESTONE' WITH HARDIETRIM BOARD - SMOOTH BATTEN BOARD - 'COBBLESTONE' BY JAMES HARDIE.
- PREFINISHED METAL COPING - 'WHITE'
- ALUMINUM STOREFRONT FRAMING / GLAZING ASSEMBLY - TINTED INSULATED LOW-E GLASS WITH 'DARK BRONZE' ANODIZED ALUMINUM FRAMES
- ALUMINUM DOOR / GLAZING ASSEMBLY - TINTED INSULATED LOW-E GLASS WITH 'DARK BRONZE' ANODIZED ALUMINUM FRAMES
- HOLLOW METAL DOOR AND FRAME - PAINT TO MATCH 'DARK BRONZE'.
- ARCHITECTURAL PRECAST CONCRETE SILL
- EXTERIOR LED SIGNAGE. SEE ELECTRICAL DRAWINGS FOR FURTHER INFORMATION.
- DECORATIVE COMPOSITE WOOD CORNICE - PAINT 'WHITE'
- PREFINISHED METAL SCUPPER AND DOWNSPOUT - 'DARK BRONZE'. CONNECT DOWNSPOUT TO UNDERGROUND STORM SEWER. SEE CIVIL DRAWINGS FOR FURTHER INFORMATION.
- LIGHT FIXTURE. SEE ELECTRICAL DRAWINGS FOR FURTHER INFORMATION.
- 1x COMPOSITE WOOD TRIM - PAINT 'WHITE'
- 'BLACK' FABRIC AWNING.
- DASHED LINE DENOTES TOP OF ROOF BEYOND
- DECORATIVE WOOD DENTAL - PAINT 'WHITE'.
- ARCHITECTURAL PRECAST CONCRETE COLUMN CAP.
- 8x8 COMPOSITE WOOD COLUMN. SEE STRUCTURAL FOR FURTHER INFORMATION.
- 4x12 COMPOSITE WOOD BEAM.
- 1x COMPOSITE WOOD TRIM - PAINT 'BLUE'
- WALL MOUNTED CT CABINET - PAINT TO MATCH ADJACENT FINISH
- ELECTRICAL METER - PAINT TO MATCH ADJACENT FINISH



3 EXTERIOR SIGN SCHEDULE
1/4" = 1'-0"

**NOT FOR
CONSTRUCTION**

Owner
New Horizon Academy
3405 Annapolis Lane
N., Suite 100
Plymouth, MN 55447
763.557.1111

Architect
Short Elliott Hendrickson, Inc.
2000 South Colorado Boulevard
Tower One, Suite 6000
Denver, Colorado 80222
720.540.6800

Landscape Architect
Short Elliott Hendrickson, Inc.
10901 Red Circle Drive
Suite 300
Minnetonka, MN 55343
952.912.2600

Civil Engineer
Short Elliott Hendrickson, Inc.
418 West Superior Street
Suite 200
Duluth, MN 55802
218.279.3000

Structural Engineer

Mechanical Engineer

Electrical Engineer

New Horizon Academy
**NEW HORIZON ACADEMY -
DOUGLAS XXX FILING, NO. X**
PARKER, CO

This drawing is an instrument of service and shall remain the property of Short Elliott Hendrickson, Inc. (SEH). This drawing and the concepts and ideas contained herein shall not be used, reproduced, revised, or retained without the express written approval of SEH.

Submission or distribution of this drawing to meet official or regulatory requirements or for other purposes in connection with the project is not to be construed as publication in derogation of any of the rights of SEH.

SEH Project: NHOAC 156217
Checked By:
Drawn By:

Copyright © 2020
Short Elliott Hendrickson, Inc.
All rights reserved.

Project Status: TOWN REVIEW
Issue Date: 8/26/2020

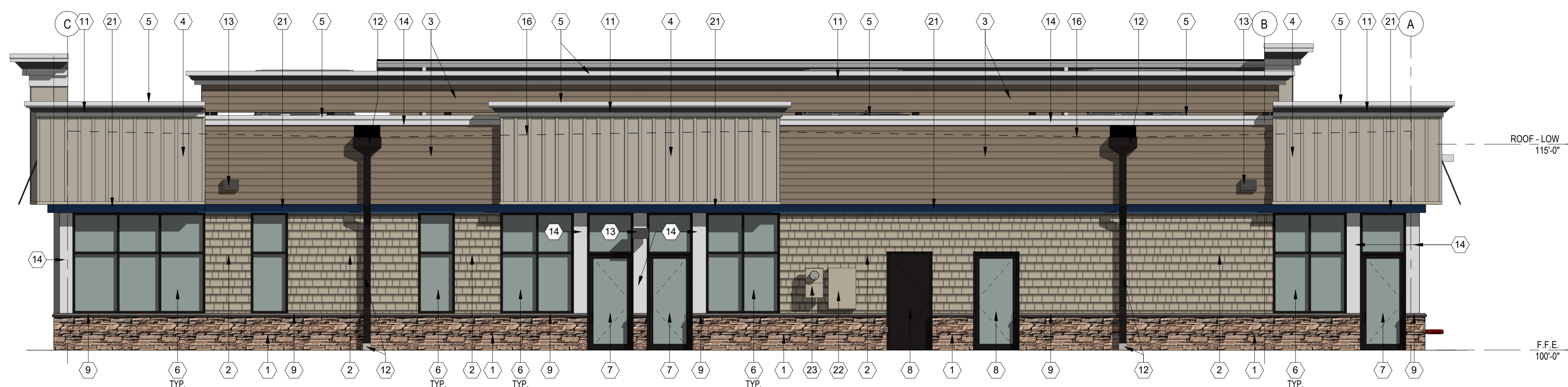
Revision Issue

| Rev. # | Description | Date |
|--------|-------------|------|
| | | |

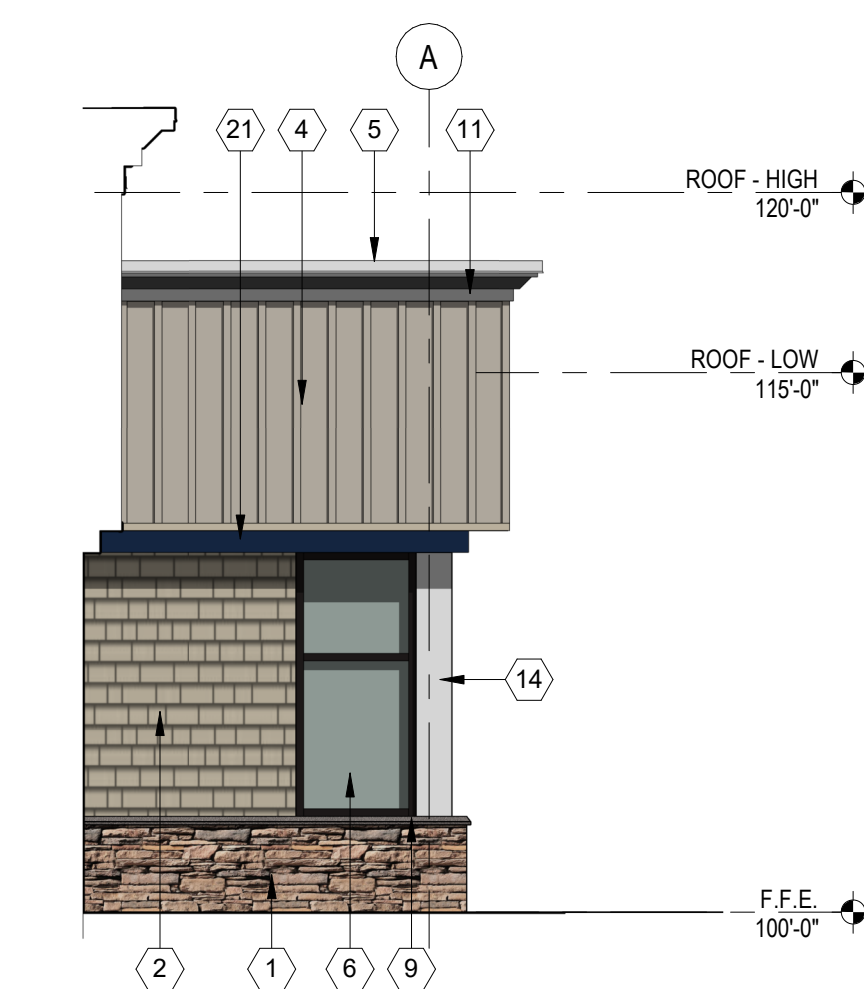
EXTERIOR ELEVATIONS



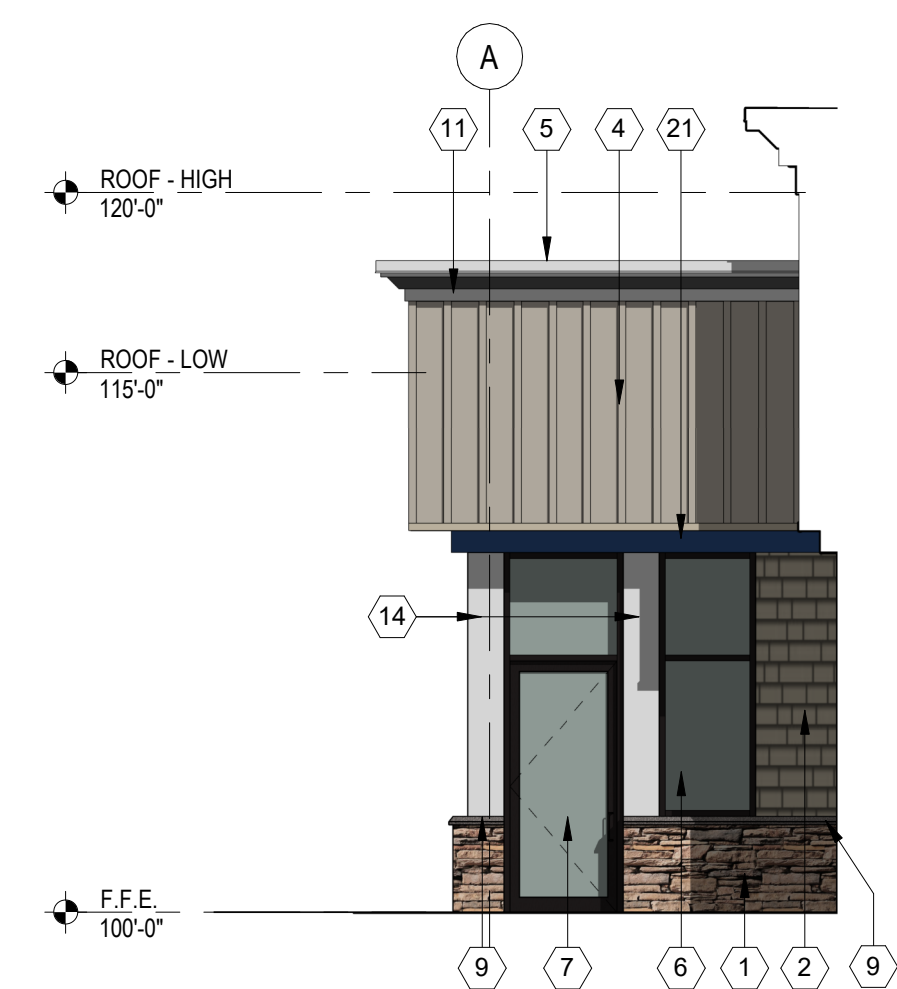
1 WEST ELEVATION
3/16" = 1'-0"



2 SOUTH ELEVATION
3/16" = 1'-0"



3 SOUTH ENTRY ELEVATION
3/16" = 1'-0"



4 NORTH ENTRY ELEVATION
3/16" = 1'-0"

ELEVATION KEY NOTES

- STONE VENEER - SOUTHERN LEDGESTONE 'CHARDONNAY' BY CULTURED STONE
- WOOD SHAKE SIDING - HARDIESHINGLE - STRAIGHT EDGE PANEL 'NAVAJO BEIGE' BY JAMES HARDIE
- HORIZONTAL SIDING - HARDIEPLANK - SMOOTH - 'KHAKI BROWN' BY JAMES HARDIE
- BOARD AND BATTEN SIDING - HARDIEPANEL VERTICAL SIDING - SMOOTH - 'COBBLESTONE' WITH HARDIETRIM BOARD - SMOOTH BATTEN BOARD - 'COBBLESTONE' BY JAMES HARDIE.
- PREFINISHED METAL COPING - 'WHITE'
- ALUMINUM STOREFRONT FRAMING / GLAZING ASSEMBLY - TINTED INSULATED LOW-E GLASS WITH 'DARK BRONZE' ANODIZED ALUMINUM FRAMES
- ALUMINUM DOOR / GLAZING ASSEMBLY - TINTED INSULATED LOW-E GLASS WITH 'DARK BRONZE' ANODIZED ALUMINUM FRAMES
- HOLLOW METAL DOOR AND FRAME - PAINT TO MATCH 'DARK BRONZE'
- ARCHITECTURAL PRECAST CONCRETE SILL
- EXTERIOR LED SIGNAGE. SEE ELECTRICAL DRAWINGS FOR FURTHER INFORMATION.
- DECORATIVE COMPOSITE WOOD CORNICE - PAINT 'WHITE'
- PREFINISHED METAL SCUPPER AND DOWNSPOUT - 'DARK BRONZE'. CONNECT DOWNSPOUT TO UNDERGROUND STORM SEWER. SEE CIVIL DRAWINGS FOR FURTHER INFORMATION.
- LIGHT FIXTURE. SEE ELECTRICAL DRAWINGS FOR FURTHER INFORMATION.
- 1x COMPOSITE WOOD TRIM - PAINT 'WHITE'
- 'BLACK' FABRIC AWNING.
- DASHED LINE DENOTES TOP OF ROOF BEYOND
- DECORATIVE WOOD DENTAL - PAINT 'WHITE'.
- ARCHITECTURAL PRECAST CONCRETE COLUMN CAP.
- 8x8 COMPOSITE WOOD COLUMN. SEE STRUCTURAL FOR FURTHER INFORMATION.
- 4x12 COMPOSITE WOOD BEAM.
- 1x COMPOSITE WOOD TRIM - PAINT 'BLUE'
- WALL MOUNTED CT CABINET - PAINT TO MATCH ADJACENT FINISH
- ELECTRICAL METER - PAINT TO MATCH ADJACENT FINISH



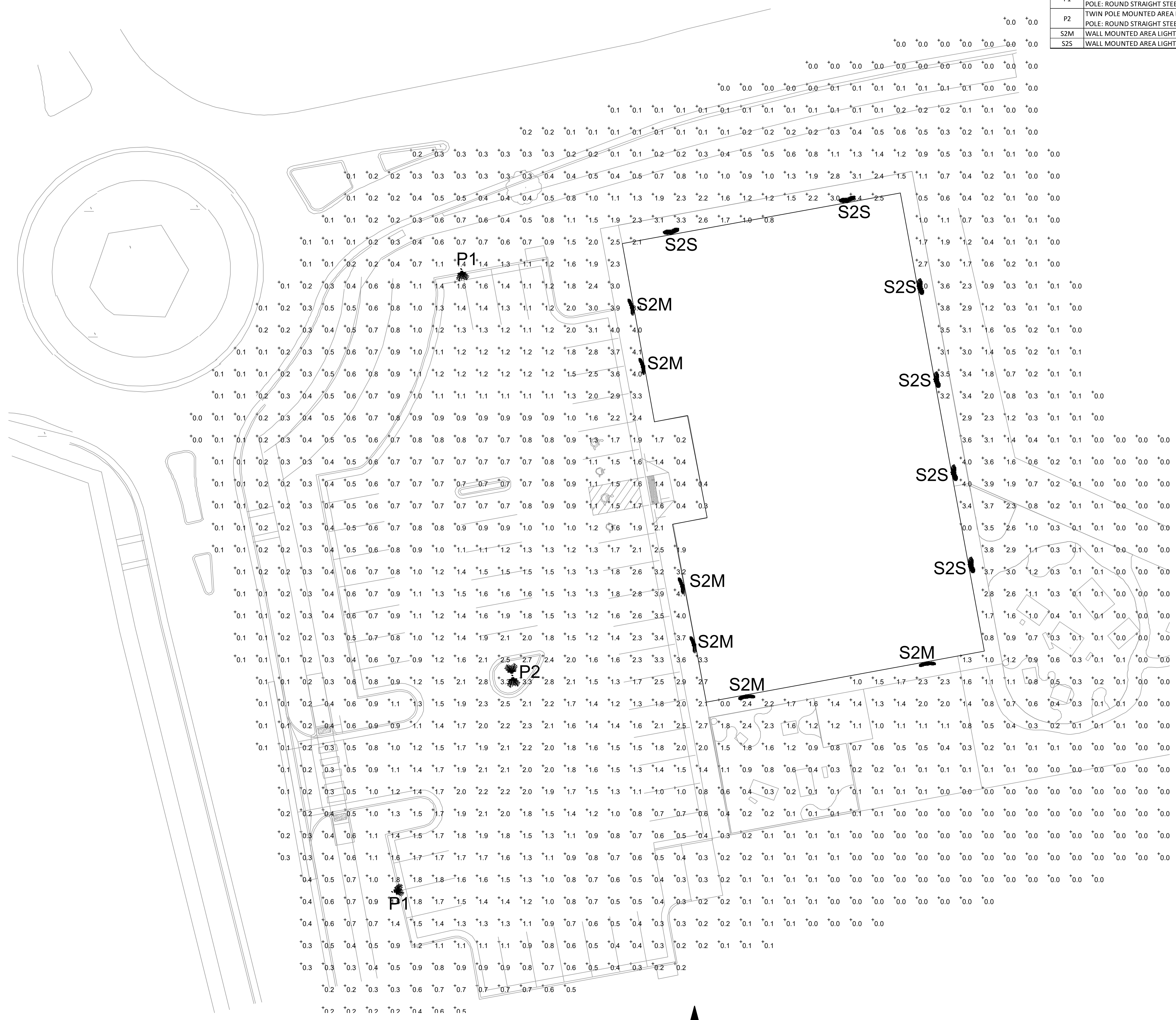
Building a Better World for All of Us®

NOT FOR CONSTRUCTION

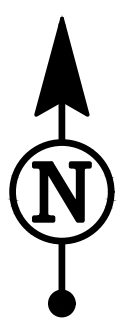
| TYPE | DESCRIPTION | CATALOG # |
|------|--|--|
| P1 | POLE MOUNTED AREA LED LIGHT FIXTURE, 4000K, TYPE TFTM FORWARD THROW DISTRIBUTION | LITHONIA LIGHTING: DSX1-LED-P2-40K-TFTM |
| | POLE: ROUND STRAIGHT STEEL, DARK BRONZE FINISH | POLE: LITHONIA LIGHTING RSS, DDBXD |
| P2 | TWIN POLE MOUNTED AREA LED LIGHT FIXTURES, 4000K, TYPE TFTM FORWARD THROW DISTRIBUTION | LITHONIA LIGHTING: DSX1-LED-P2-40K-TFTM |
| | POLE: ROUND STRAIGHT STEEL, DARK BRONZE FINISH | POLE: LITHONIA LIGHTING RSS, DDBXD |
| S2M | WALL MOUNTED AREA LIGHT FIXTURE, 4000K, TYPE 2 MEDIUM DISTRIBUTION. | LITHONIA LIGHTING: DSXW1-LED-10C-700-40K-T2M |
| S2S | WALL MOUNTED AREA LIGHT FIXTURE, 4000K, TYPE 2 SHORT DISTRIBUTION. | LITHONIA LIGHTING: DSXW1-LED-10C-700-40K-T2S |

PHOTOMETRIC SITE PLAN GENERAL NOTES:

A. ALL EXTERIOR LIGHT FIXTURES SHALL BE FULL CUTOFF.



1 PHOTOMETRIC SITE PLAN Scale: 1/16" = 1'-0"



Owner
New Horizon Academy
3405 Annapolis Lane
N., Suite 100
Plymouth, MN 55447
763.557.1111

Architect
Short Elliott Hendrickson, Inc.
2000 South Colorado Boulevard
Tower One, Suite 6000
Denver, Colorado 80222
720.540.6800

Landscape Architect
Short Elliott Hendrickson, Inc.
10901 Red Circle Drive
Suite 300
Minnetonka, MN 55343
952.912.2600

Civil Engineer
Short Elliott Hendrickson, Inc.
418 West Superior Street
Suite 200
Duluth, MN 55802
218.279.3000

Structural Engineer

Mechanical Engineer

Electrical Engineer

New Horizon Academy
NEW HORIZON ACADEMY - CHAMBERS & HESS
PARKER, CO

This drawing is an instrument of service and shall remain the property of Short Elliott Hendrickson, Inc. (SEH). This drawing and the concepts and ideas contained herein shall not be used, reproduced, revised, or retained without the express written approval of SEH.

Submission or distribution of this drawing for meet official or regulatory requirements or for other purposes in connection with the project is not to be construed as a publication in derogation of any of the rights of SEH.

Copyright © 2020
Short Elliott Hendrickson, Inc.
All Rights Reserved

SEH Project: NHOAC 156217
Checked By: KW
Drawn By: VT

Project Status: Issue Date

Revision Issue

| Rev. # | Description | Date |
|--------|-------------|------|
| | | |