

NOT FOR CONSTRUCTION

Owner:
New Horizon Academy
3405 Annapolis Lane
N. Suite 100
Plymouth, MN 55447
763.557.1111

Architect:
Short Elliott Hendrickson, Inc.
2000 South Colorado Boulevard
Tower One, Suite 6000
Denver, Colorado 80222
720.540.6800

Landscape Architect:
Short Elliott Hendrickson, Inc.
10901 Red Circle Drive
Suite 300
Minnetonka, MN 55343
952.912.2600

Civil Engineer:
Short Elliott Hendrickson, Inc.
418 West Superior Street
Suite 200
Duluth, MN 55802
218.279.3000

Structural Engineer:

Mechanical Engineer:

Electrical Engineer:

NEW HORIZON ACADEMY - CHAMBERS & HESS
PARKER, CO

This drawing is an instrument of service and shall remain the property of Short Elliott Hendrickson, Inc. (SEH). This drawing and the concepts and ideas contained herein shall not be used, reproduced, revised, or retained without the express written approval of SEH.

Submission or distribution of this drawing to meet official or regulatory requirements or for other purposes in connection with the project is not to be construed as publication in derogation of any of the rights of SEH.

SEH Project: NHOAC 152217
Checked By: KW
Drawn By: VT

Project Status: Issue Date:

Revision Issue
Rev. # 1 Description City Comments Date 01/15/2021

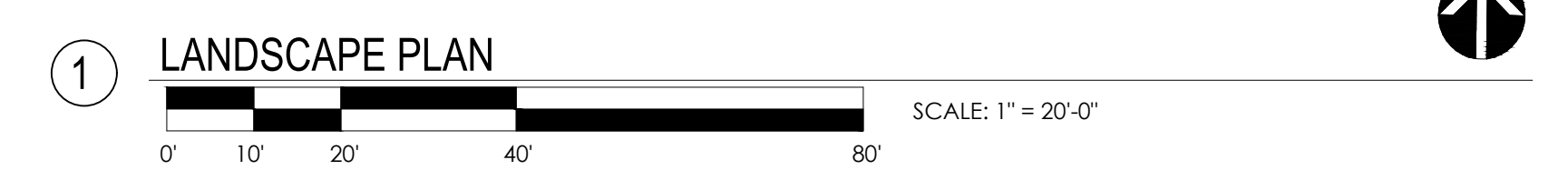
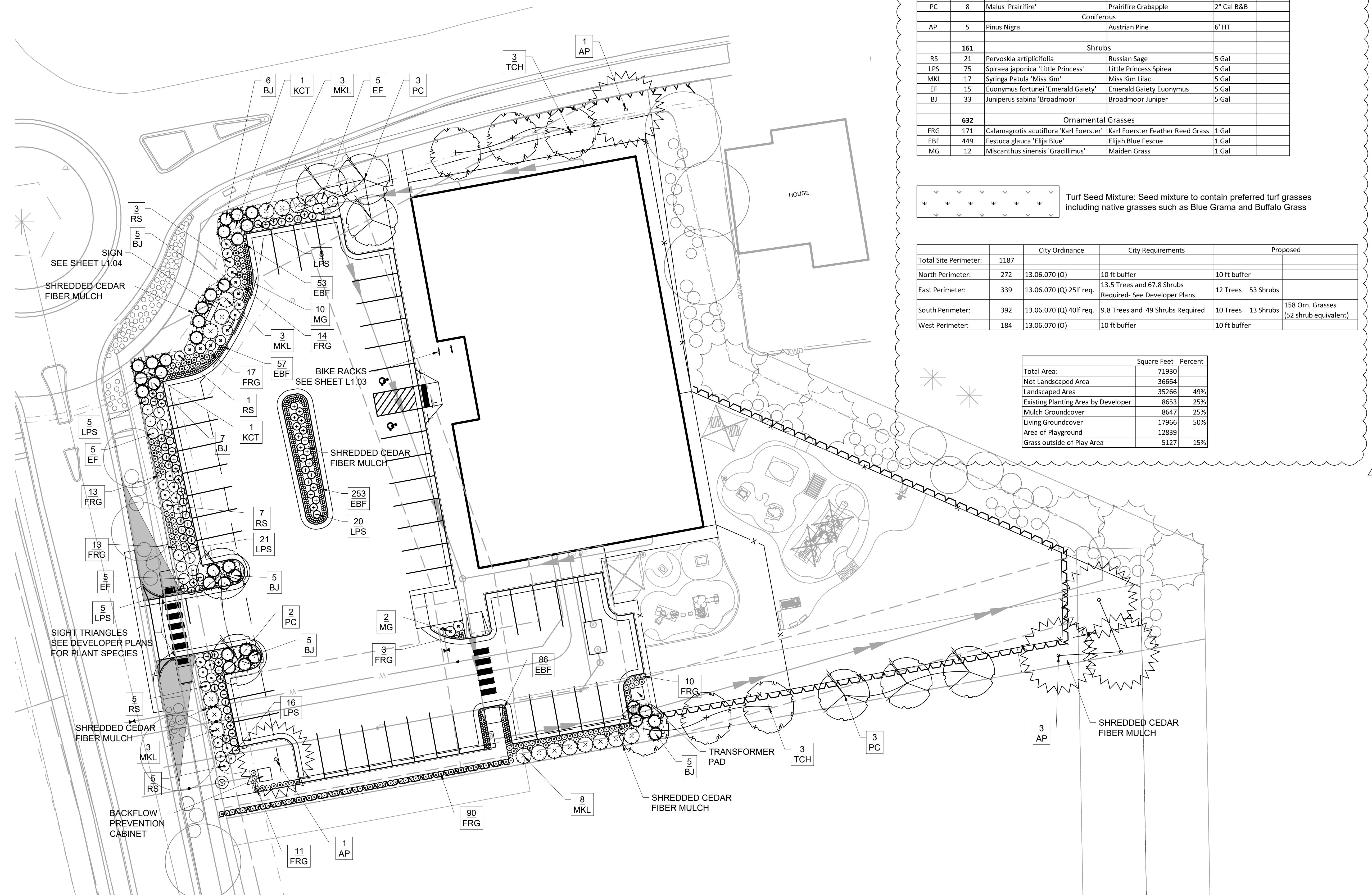
LANDSCAPE PLAN
L1.01

Planting Schedule					
SYM	QTY	Botanical Name	Common Name	Size	Notes
Trees					
Deciduous					
KCT	2	Gymnocladus dioica	Kentucky Coffee Tree	2.5" Cal B&B	
TCH	6	Crataegus crus-galli var. inermis	Thornless Cockspur Hawthorn	2" Cal B&B	
PC	8	Malus 'Prairifire'	Prairifire Crabapple	2" Cal B&B	
Coniferous					
AP	5	Pinus Nigra	Austrian Pine	6' HT	
Shrubs					
RS	21	Pervoskia arcticifolia	Russian Sage	5 Gal	
LPS	75	Spiraea japonica 'Little Princess'	Little Princess Spirea	5 Gal	
MKL	17	Syringa Patula 'Miss Kim'	Miss Kim Lilac	5 Gal	
EF	15	Euonymus fortunei 'Emerald Gaiety'	Emerald Gaiety Euonymus	5 Gal	
BJ	33	Juniperus sabinna 'Broadmoor'	Broadmoor Juniper	5 Gal	
Ornamental Grasses					
FRG	171	Calamagrotis acutiflora 'Karl Foerster'	Karl Foerster Feather Reed Grass	1 Gal	
EBF	449	Festuca glauca 'Elija Blue'	Elijah Blue Fescue	1 Gal	
MG	12	Miscanthus sinensis 'Gracillimus'	Maiden Grass	1 Gal	

Turf Seed Mixture: Seed mixture to contain preferred turf grasses including native grasses such as Blue Grama and Buffalo Grass

	City Ordinance	City Requirements	Proposed
Total Site Perimeter:	1187		
North Perimeter:	272 13.06.070 (O)	10 ft buffer	10 ft buffer
East Perimeter:	339 13.06.070 (Q) 25lf req.	13.5 Trees and 67.8 Shrubs Required- See Developer Plans	12 Trees 53 Shrubs
South Perimeter:	392 13.06.070 (Q) 40lf req.	9.8 Trees and 49 Shrubs Required	10 Trees 13 Shrubs 158 Orn. Grasses (52 shrub equivalent)
West Perimeter:	184 13.06.070 (O)	10 ft buffer	10 ft buffer

	Square Feet	Percent
Total Area:	71930	
Not Landscaped Area	36664	
Landscaped Area	35266	49%
Existing Planting Area by Developer	8653	25%
Mulch Groundcover	8647	25%
Living Groundcover	17966	50%
Area of Playground	12839	
Grass outside of Play Area	5127	15%



1 LANDSCAPE PLAN
SCALE: 1" = 20'-0"

X:\WORKING\152217\PLANS\LANDSCAPE\LANDSCAPE PLAN\NHOAC152217_L1.01.DWG 05/10/2020 4:28 PM



Building a Better World
for All of Us

**NOT FOR
CONSTRUCTION**

Owner
New Horizon Academy
3405 Annapolis Lane
N., Suite 100
Plymouth, MN 55447
763.557.1111

Architect
Short Elliott Hendrickson, Inc.
2000 South Colorado Boulevard
Tower One, Suite 6000
Denver, Colorado 80222
720.540.6800

Landscape Architect
Short Elliott Hendrickson, Inc.
10901 Red Circle Drive
Suite 300
Minnetonka, MN 55343
952.912.2600

Civil Engineer
Short Elliott Hendrickson, Inc.
418 West Superior Street
Suite 200
Duluth, MN 55802
218.279.3000

Structural Engineer

Mechanical Engineer

Electrical Engineer

New Horizon Academy
**NEW HORIZON ACADEMY -
CHAMBERS & HESS**
PARKER, CO

This drawing is an instrument of service and shall remain the property of Short Elliott Hendrickson, Inc. (SEH). This drawing and the concepts and ideas contained herein shall not be used, reproduced, revised, or retained without the express written approval of SEH.

Submission or distribution of this drawing to meet official or regulatory requirements or for other purposes in connection with the project is not to be construed as publication in derogation of any of the rights of SEH.

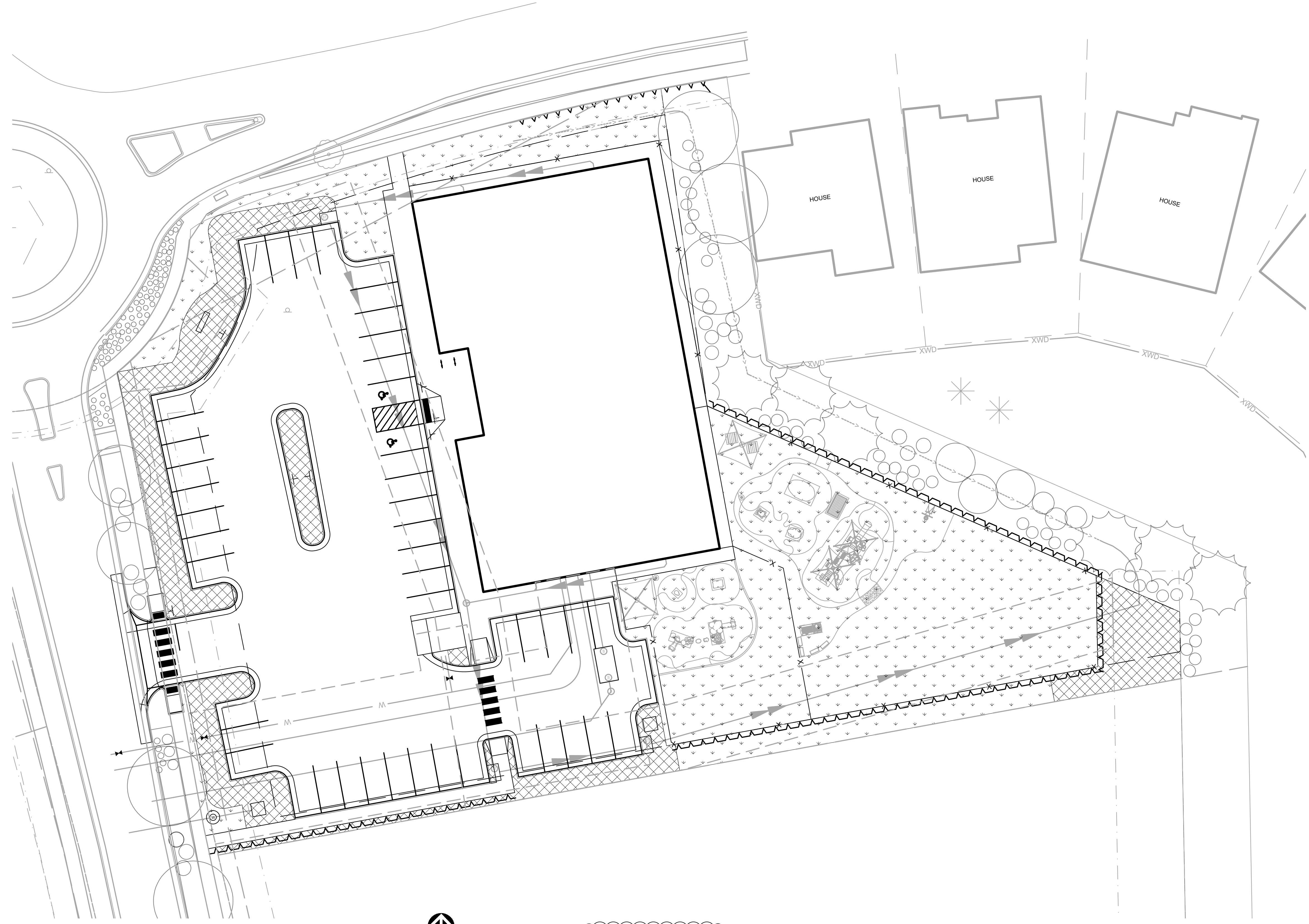
SEH Project NHOAC 156217
Checked By KW
Drawn By VT

Project Status **Issue Date**

Revision Issue
Rev. # Description Date
1 City Comments 01/15/2021

IRRIGATION DIAGRAM

L1.02



1 IRRIGATION DIAGRAM
SCALE: 1" = 20'-0"

	HIGH WATER
	LOW WATER

X:\WORK\PROJECTS\156217\FINAL\ISSUES\CONTRACTS\PLAN\ANNACD156217_L1_2021.1.5.DWG 5/10/2020 4:28 PM

**NOT FOR
CONSTRUCTION**

Owner
New Horizon Academy
3405 Annapolis Lane
N., Suite 100
Plymouth, MN 55447
763.557.1111

Architect
Short Elliott Hendrickson, Inc.
2000 South Colorado Boulevard
Tower One, Suite 6000
Denver, Colorado 80222
720.540.6800

Landscape Architect
Short Elliott Hendrickson, Inc.
10901 Red Circle Drive
Suite 300
Minnetonka, MN 55343
952.912.2600

Civil Engineer
Short Elliott Hendrickson, Inc.
418 West Superior Street
Suite 200
Duluth, MN 55802
218.279.3000

Structural Engineer

Mechanical Engineer

Electrical Engineer

**NEW HORIZON ACADEMY -
CHAMBERS & HESS**
PARKER, CO

This drawing is an instrument of service and shall remain the property of Short Elliott Hendrickson, Inc. (SEH). This drawing and the concepts and ideas contained herein shall not be used, reproduced, revised, or retained without the express written approval of SEH.

Submission or distribution of this drawing to meet official or regulatory requirements or for other purposes in connection with the project is not to be construed as publication or delegation of any of the rights of SEH.

SEH Project NHOAC 152217
Checked By KW
Drawn By VT

Project Status Issue Date

Revision Issue

Rev. # **Description** **Date**
1 City Comments 01/15/2021

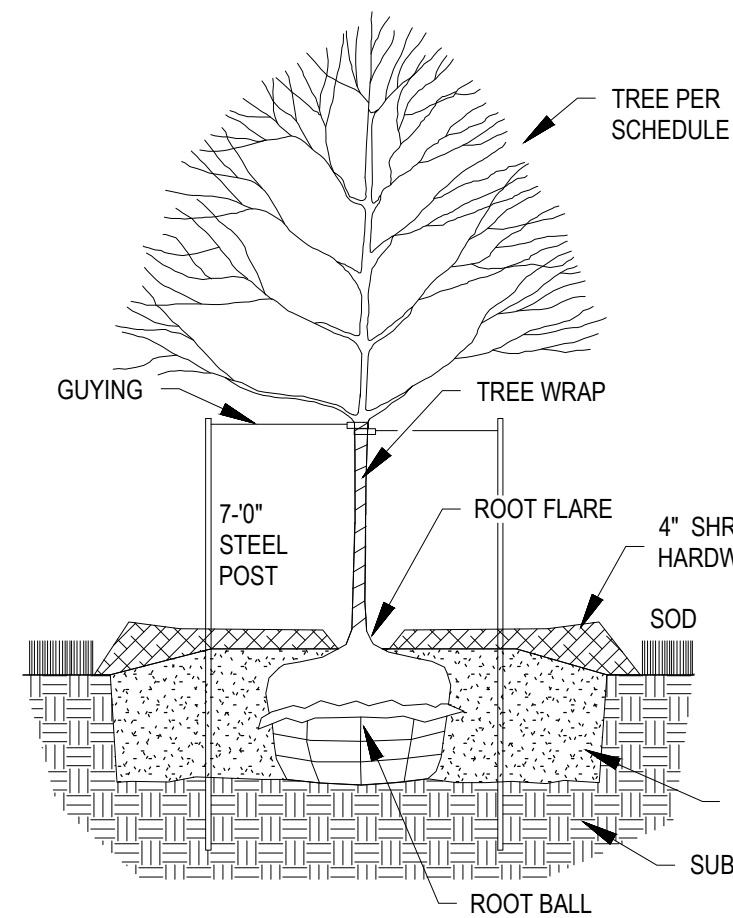
LANDSCAPE DETAILS

L1.03

LANDSCAPE SPECIFICATIONS

TREES, SHRUBS, AND PERENNIALS

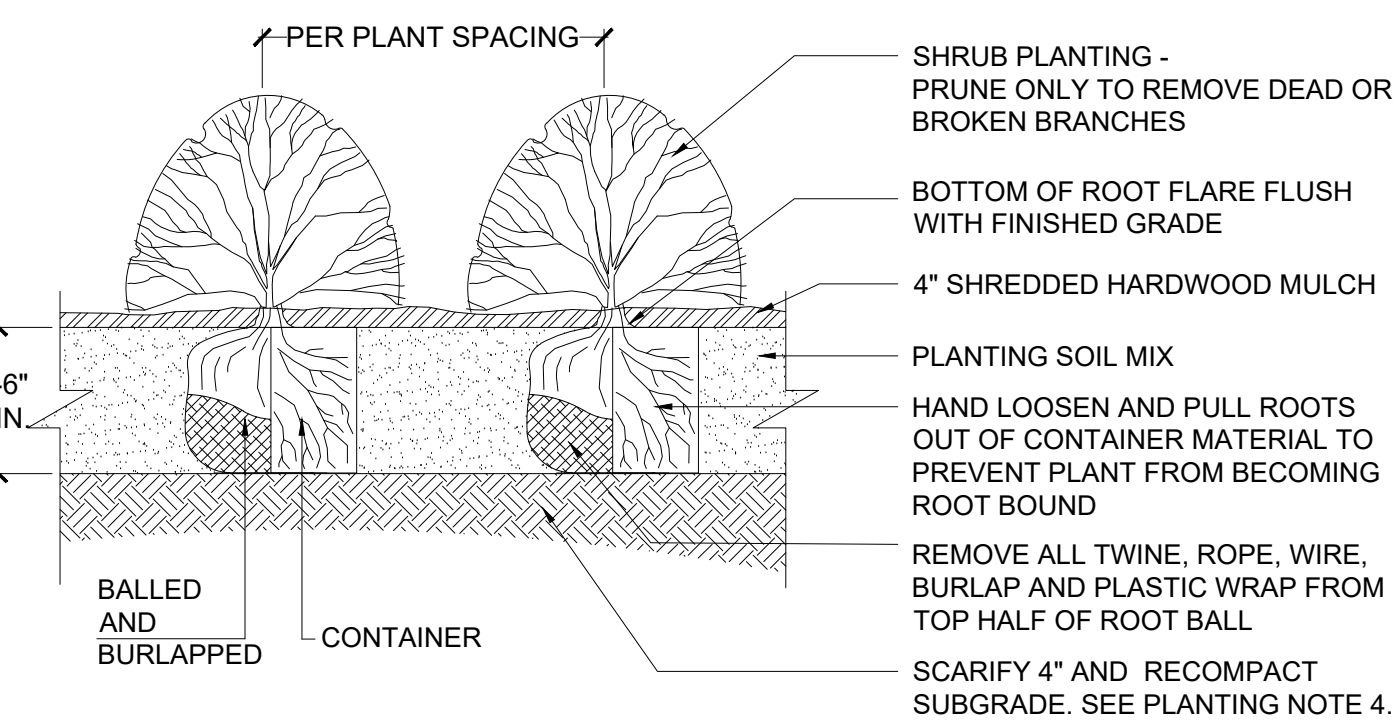
1. REFERENCES
 - A. CDOT - COLORADO DEPARTMENT OF TRANSPORTATION, 2017 EDITION.
 - B. AMERICAN STANDARD FOR NURSERY STOCK, ANSI Z60.1-2014.
2. QUALITY ASSURANCE
 - A. WORK SHALL BE PERFORMED BY A LANDSCAPE CONTRACTOR WITH EXTENSIVE HORTICULTURE KNOWLEDGE, AND A MIN. OF 3 YEARS EXPERIENCE.
- B. HANDLE PLANTS IN SUCH A WAY AS TO PROTECT FROM DAMAGE EITHER PHYSICAL OR BY EXPOSURE TO SUN AND WIND. MISHANDLED PLANTS ARE SUBJECT TO REJECTION BY LANDSCAPE ARCHITECT.
- C. PLANTS USED ON THIS PROJECT SHALL MEET THE GRADING STANDARDS RECOMMENDED BY THE ANSI Z60.1-2014.
3. PRODUCTS
 - A. PLANTS: PROVIDE AS SPECIFIED ON PLANT SCHEDULE.
 - B. EDGING: RYERSON STEEL EDGING 3/8" X 5" W/ 18" STAKES, OR EQUAL.
 - C. MULCH: SHREDDED CEDAR FIBER MULCH, APPLIED A MINIMUM OF FOUR INCHES IN DEPTH, INSTALLED OVER A BASE OF GEOTEXTILE FABRIC.
 - D. WATER: CONTRACTOR TO PROVIDE.
 - E. PLANTING SOIL MIX: RICH SANDY LOAM, FREE OF DEBRIS AND SEEDS, AND CONFORMING TO CDOT 207 (TOPSOIL).
 - F. SOIL AMENDMENTS: CONFORMING TO CDOT 212 (SEEDING, FERTILIZER, SOIL CONDITIONS AND SODDING).
 - G. TREE WRAP: TWO-PLY WEATHER RESISTANT PAPER PRODUCT.
4. PLANTING DATES: SPRING PLANTING: APR. 1- JUNE 15. THESE DATES MAY BE EXTENDED IF DAYTIME TEMPS. REMAIN BELOW 80 DEGREES. FALL: SEPT. 30 - OCT. 30TH. DAYTIME TEMPS. NEED TO DROP BELOW 80 DEGREES BEFORE PLANTING BEGINS, AND MAY CONTINUE UNTIL FREEZE UP. CONIFEROUS TREES AUG. 15- OCT. 1ST. PLANT UNDER FAVORABLE WEATHER CONDITIONS, DO NO PLANT DURING DAYS OF EXTREME HEAT.
5. EXECUTION
 - A. PLANT INTO PREPARED PLANTING BEDS.
 - B. PRIOR TO DIGGING, CONTRACTOR TO HAVE UTILITIES LOCATED AND MARKED.
 - C. CONTRACTOR TO NOTIFY LANDSCAPE ARCHITECT 3 DAYS IN ADVANCE OF WHEN PLANTING WORK WILL OCCUR.
 - D. INSTALL TREES, SHRUBS, AND PERENNIALS PER PLANTING DETAILS. ADJUST LOCATION IF IN CONFLICT WITH UTILITIES. VERIFY NEW LOCATION WITH LANDSCAPE ARCHITECT PRIOR TO PLANTING.
 - E. SEPARATE ALL SHRUB BEDS FROM SOD AREAS WITH METAL EDGER.
 - F. CLEAN-UP ENTIRE SITE FOLLOWING PLANTING OPERATIONS.
6. ACCEPTANCE OF PLANTING WORK
 - A. CONTRACTOR TO NOTIFY OWNER WHEN PLANTING WORK IS COMPLETE FOR REVIEW AND PUNCH LIST.
 - B. CONTRACTOR TO WATER AND MAINTAIN THE TREES, SHRUBS, AND PERENNIALS UNTIL OWNER ACCEPTANCE.
 - C. OWNER WILL GIVE ACCEPTANCE OF WORK, FOLLOWING SATISFACTORY CORRECTION OF PUNCH LIST ITEMS.
 - D. WATERING AND REGULAR LANDSCAPE MAINTENANCE OF TREES, SHRUBS, AND PERENNIALS WILL BE OWNERS RESPONSIBILITY FOLLOWING OWNER ACCEPTANCE OF WORK.
7. GUARANTEE PERIOD
 - A. CONTRACTOR TO WARRANTY TREES, SHRUBS, AND PERENNIALS FOR TWO YEARS FOLLOWING ACCEPTANCE OF WORK BY OWNER.
 - B. CONTRACTOR TO MAINTAIN THE TREES IN A PLUMB POSITION THROUGHOUT THE GUARANTEE PERIOD.
 - C. CONTRACTOR TO REMOVE ALL STAKING/ WIRING/ STRAPS FROM FREES AT THE END OF THE GUARANTEE PERIOD.
 - D. REPLACEMENTS: AT THE END OF THE GUARANTEE PERIOD, ALL PLANTS WHICH ARE UNHEALTHY, DEAD, NOT HAVING A NORMAL DENSITY, SIZE, SHAPE OR COLOR SHALL BE REPLACED. REPLACEMENTS SHALL MATCH CALIPER AND/OR HEIGHT OF THE OTHER PLANTS AT TIME OF REPLACEMENT. SELECTION OF REPLACEMENT MATERIAL AND INSTALLATION PRACTICES SHALL FOLLOW THE REQUIREMENTS OF THE DRAWINGS AND SPECIFICATIONS.
8. IRRIGATION
 - A. CONFORM TO THE REQUIREMENTS OF CDOT 107.14 (INTERRUPTION OF IRRIGATION WATER FLOW), CDOT 623 (IRRIGATION SYSTEM) AND ALL OTHER APPLICABLE CDOT IRRIGATION MATERIALS AND CONSTRUCTION REQUIREMENTS.



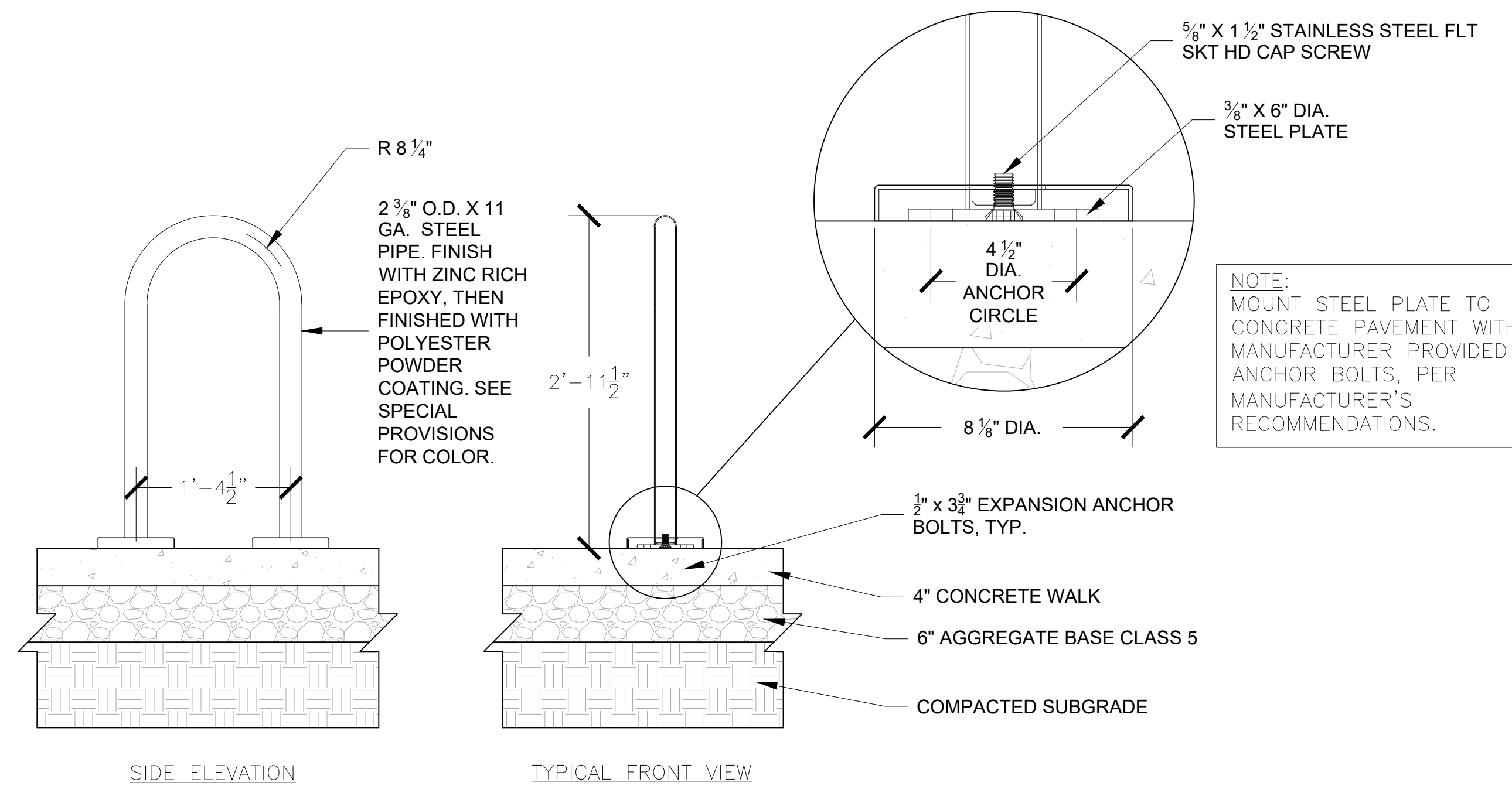
NOTES:

1. REMOVE DEAD OR DAMAGED BRANCHES. RETAIN THE NATURAL FORM OF THE TREE. DO NOT CUT THE LEADER.
2. WIDTH OF PLANTING HOLES: 18" MIN. LARGER THAN ROOT BALL, ON ALL SIDES.
3. DEPTH OF HOLE: ROOT FLARE TO SIT AT OR UP TO 2" ABOVE THE TOP OF THE FINISHED SOIL ELEVATION. LEAVE SOIL UNDISTURBED BENEATH THE ROOT BALL.
4. SCARIFY BOTTOM AND SIDES OF HOLE PRIOR TO PLANTING.
5. SET PLANT ON UNDISTURBED SOIL OR THOROUGHLY COMPACTED PLANTING SOIL.
6. REMOVE TOP 1/3 OF THE BASKET OR THE TOP TWO HORIZONTAL RINGS WHICHEVER IS GREATER. COMPLETELY REMOVE ALL BURLAP FROM TOP 1/3 OF ROOT BALL. REMOVE ALL TWINE. REMOVE OR CORRECT STEM GIRDLING ROOTS.
7. SLIT REMAINING BURLAP AT 6" INTERVALS.
8. PLUMB & BACKFILL WITH PLANTING SOIL. THOROUGHLY WATER IN TREE WITHIN 2 HOURS TO SETTLE PLANTS AND FILL VOIDS.
9. BACKFILL VOIDS AND WATER A SECOND TIME.
10. PLACE 4" MULCH WITHIN 48 HOURS OF THE SECOND WATERING. NO MULCH TO BE IN CONTACT W/ TRUNK.
11. CONTRACTOR IS RESPONSIBLE FOR MAINTAINING TREES IN A PLUMB POSITION THROUGHOUT THE GUARANTEE PERIOD. STAKE TREES IF SITE CONDITIONS, SUCH AS SOIL, AND WIND, PREVENT THE TREES FROM STAYING PLUMB. USE 16" LONG, 1 1/2" WIDE STRAPS, SEE SPECS. ATTACH TO POST WITH WIRE SEE SPECS. INSTALL POST 3" INTO GROUND. REMOVE WITHIN ONE YEAR.
12. WRAP TRUNK IN FALL REMOVE IN SPRING.
13. REFER TO SPECS. FOR PRODUCTS AND OTHER INFORMATION.

1 TREE PLANTING DETAIL



2 SHRUB PLANTING DETAIL



3 BIKE RACK DETAIL

LANDSCAPING SHALL BE PLANTED AND MAINTAINED IN A NEAT, CLEAN AND HEALTHY CONDITION BY THE OWNER. THIS SHALL INCLUDE PROPER PRUNING, MOVING AND AERATION OF LAWNS, REPLACEMENT OF MULCH, WEEDING, REMOVAL OF LITTER AND THE REGULAR WATERING OF ALL PLANTINGS. IRRIGATION SHALL BE MAINTAINED TO MAXIMIZE WATER CONSUMPTION. SHOULD ANY PLANT MATERIAL DIE, THE OWNER, SUCCESSOR, OR ASSIGNS SHALL BE RESPONSIBLE FOR THE REPLACEMENT OF PLANT(S) WITHIN ONE PLANTING SEASON. REPLACEMENT OF PLANT MATERIALS SHALL OCCUR AT THE FOLLOWING RATE.

TYPE	PLANT REPLACEMENT WITHIN	
	1 YEAR	2+ YEARS
TREE- DECIDUOUS	INCREASE CALIPER BY 1"	INCREASE CALIPER BY 1.5"
TREE- CONIFEROUS	INCREASE HEIGHT BY 1.5'	INCREASE HEIGHT BY 2'
SHRUB	REPLACE WITH PLANTS OF AT LEAST 1/2 MATURE SIZE	REPLACE WITH PLANTS OF AT LEAST 1/2 MATURE SIZE

