

Owner:
New Horizon Academy
3405 Annapolis Lane
N., Suite 100
Plymouth, MN 55447
763.557.1111

Architect:
Short Elliott Hendrickson, Inc.
2000 South Colorado Boulevard
Tower One, Suite 6000
Denver, Colorado 80222
720.540.6800

Landscape Architect:
Short Elliott Hendrickson, Inc.
10901 Red Circle Drive
Suite 300
Minnetonka, MN 55343
952.912.2600

Civil Engineer:
Short Elliott Hendrickson, Inc.
418 West Superior Street
Suite 200
Duluth, MN 55802
218.279.3000

Structural Engineer:

NHA Provided Planting Schedule						
SYM	QTY	Botanical Name	Common Name	Size	Mature Size (H x W)	Water Usage/Notes
34 Trees						
Deciduous						
GD	3	Gymnocladus dioica	Kentucky Coffee Tree	2.5" Cal B&B	60' x 50'	Xeric
CC	6	Crataegus crus-galli var. inermis	Thornless Cockspur Hawthorn	2" Cal B&B	20' x 20'	Xeric
MP	10	Malus 'Prairifire'	Prairifire Crabapple	2" Cal B&B	20' x 20'	Low
TA	7	Tilia americana 'Boulevard'	Boulevard Linden	2.5" Cal B&B	60' x 30'	Low
Coniferous						
PN	8	Pinus Nigra	Austrian Pine	6' HT	50' x 25'	Xeric
214 Shrubs						
Deciduous						
PA	10	Pervoskia arcticifolia	Russian Sage	5 Gal	4' x 4'	Xeric
SJ	83	Spiraea japonica 'Little Princess'	Little Princess Spirea	5 Gal	2' x 3'	Low
SP	23	Syringa Patula 'Miss Kim'	Miss Kim Lilac	5 Gal	7' x 6'	Low
EF	47	Euonymus fortunei 'Emerald Gaiety'	Emerald Gaiety Euonymus	5 Gal	4' x 4'	Low
Coniferous						
JS	50	Juniperus sabina 'Broadmoor'	Broadmoor Juniper	5 Gal	1' x 5'	Xeric
JC	1	Juniperus chinensis 'Spearmint'	Spearmint Juniper	5Gal	15' x 5'	Xeric
686 Ornamental Grasses						
CA	94	Calamagrotis acutiflora 'Karl Foerster'	Karl Foerster Feather Reed Grass	1 Gal	5' x 2'	Low
FG	592	Festuca glauca 'Elija Blue'	Elija Blue Fescue	1 Gal	10" x 10"	Xeric

Developer's Planting Schedule		
QTY	Botanical Name	Common Name
15 Trees		
Deciduous		
4	Catalpa Speciosa	Catalpa
Ornamental		
2	Koeleruteria panuculata	Goldernrain Tree
Coniferous		
3	Picea pungens 'Bakeri'	Bakeri Spruce
6	Pinus nigra	Austrian Pine
73 Shrubs		
Deciduous		
6	Amelanchier alnifolia	Saskatoon Serviceberry
5	Cornus sericea 'Kelseyi'	Kelsey Dogwood
15	Perovskia atriplicifolia	Russian Sage
9	Prunus besseyi 'Pawnee Buttes'	Sandcherry Pawnee Buttes
3	Rhus trilobata	Threeleaf Sumac
3	Syringa patula 'Miss Kim'	Miss Kim Dwarf Lilac
Coniferous		
5	Cytisus x 'Minstead'	Minstead Broom
7	Euonymus fortunei 'Emerald Gaiety'	Emerald Gaiety Euonymus
3	Juniperus sabina 'Arcadia'	Arcadia Juniper
17	Pinus mugo 'Mops'	Mops Mugo Pine
75 Ornamental Grasses		
75	Pennisetum alopecuroides 'Little Bunny'	Little Bunny Fountain Grass

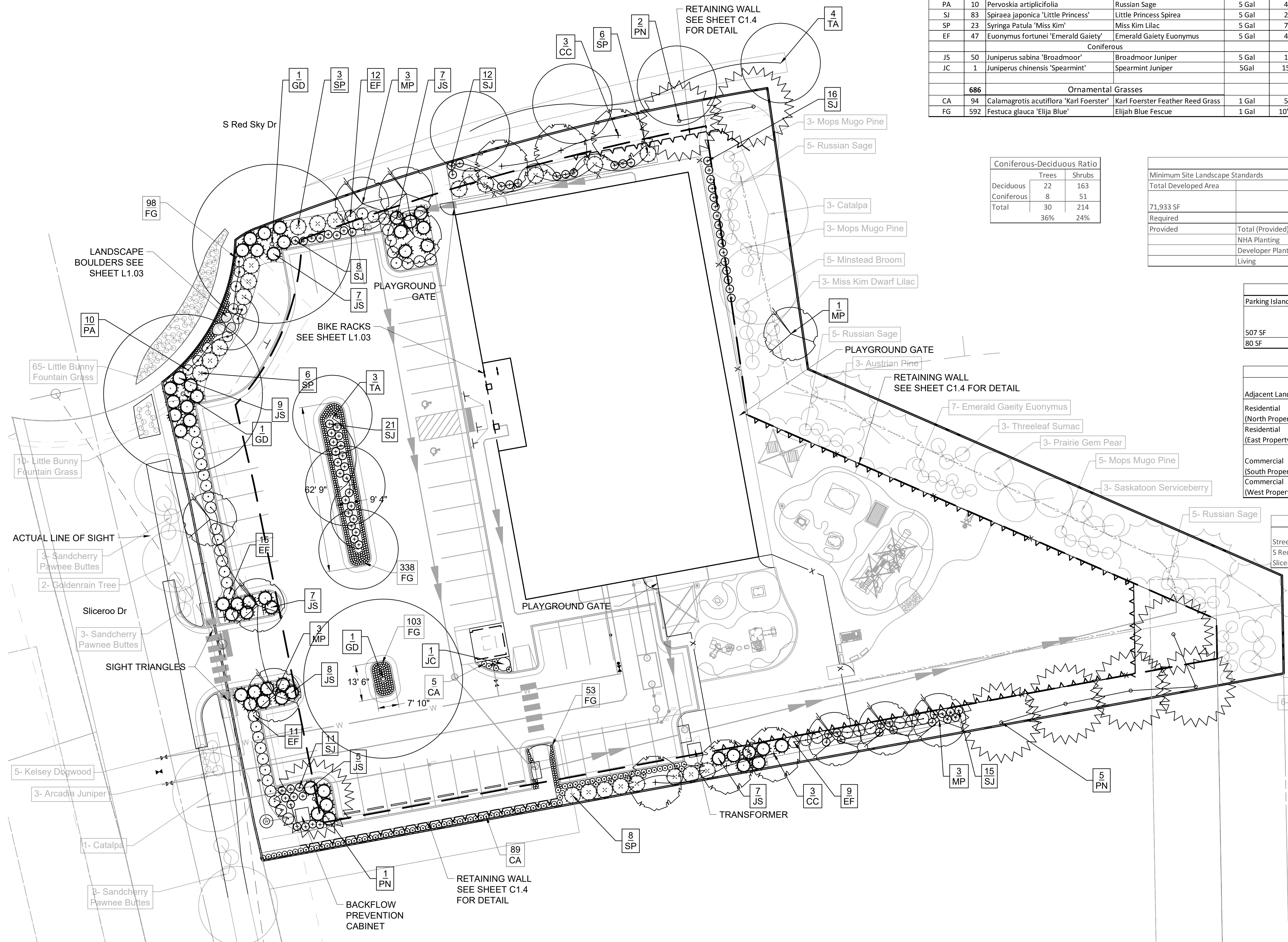
Coniferous-Deciduous Ratio		
	Trees	Shrubs
Deciduous	22	163
Coniferous	8	51
Total	30	214
	36%	24%

Landscape Requirements				
Minimum Site Landscape Standards				
Total Developed Area	Site Landscape Requirements	Site Trees	Site Shrubs	Grasses
71,933 SF		1 Tree/ 1,500 SF (1/4 Evergreen)	5 Shrubs/ 1,500 SF	3 Grasses/ 1 Shrub
Required	Landscape Area 15%	22 Trees	106 Shrubs	N/A
Provided	Total (Provided)	45	287	761
	NHA Planting	30	214	686
	Developer Planting	15	73	75
	Living	26,255 SF (82%)	N/A	N/A

Parking Lot Interior Requirements				
Parking Island Area	Required	Provided Trees	Provided Shrubs	Provided Grasses
	1 Tree and 5 shrubs each incremental 162 SF. Each additional incremental 15 SF, and additional shrub shall be planted.	(3 Req.) 3 Provided (0 Req.) 1 Provided	(16 Req.) 21 Provided (0 Req.) 0 Provided	(0 Req.) 338 Provided (0 Req.) 103 Provided
507 SF				
80 SF				

Site Perimeter Requirements					
Adjacent Land Use	Perimeter Length	Required	Total Provided	NHA Provided	Developer Provided
Residential (North Property Line)	202 LF	1 Tree and 5 Shrubs for each 25 LF of edge	8 Trees/ 40 Shrubs	8 Trees/ 54 Shrubs	8 Trees/ 54 Shrubs N/A
Residential (East Property Line)	339 LF	1 Tree and 5 Shrubs for each 25 LF of edge	14 Trees/ 70 Shrubs	14 Trees/ 72 Shrubs	2 Trees/ 16 Shrubs 56 Shrubs
Commercial (South Property Line)	392 LF	1 Tree and 5 Shrubs for each 40 LF of edge	10 Trees/ 50 Shrubs	11 Trees/ 50 Shrubs	12 Trees/ 50 Shrubs N/A
Commercial (West Property Line)	185 LF	1 Tree and 5 Shrubs for each 40 LF of edge	5 Trees/ 25 Shrubs	5 Trees/ 55 Shrubs	5 Trees/ 55 Shrubs N/A

Street Tree Requirements						
Street	Street Frontage Length	Required Trees		Provided NHA	Provided Developer	Total Trees Provided
		(1 Tree/ 40 Lineal Feet)	(1 Tree/ 40 Lineal Feet)			
S Red Sky Dr	180 LF	4	4	0	0	4
Sliceroo Dr	137 LF	3	0	3	0	3



**NOT FOR
CONSTRUCTION**

Owner
New Horizon Academy
3405 Annapolis Lane
N., Suite 100
Plymouth, MN 55447
763.557.1111

Architect
Short Elliott Hendrickson, Inc.
2000 South Colorado Boulevard
Tower One, Suite 6000
Denver, Colorado 80222
720.540.6800

Landscape Architect
Short Elliott Hendrickson, Inc.
10901 Red Circle Drive
Suite 300
Minnetonka, MN 55343
952.912.2600

Civil Engineer
Short Elliott Hendrickson, Inc.
418 West Superior Street
Suite 200
Duluth, MN 55802
218.279.3000

Structural Engineer

Mechanical Engineer

Electrical Engineer

**NEW HORIZON ACADEMY -
CHAMBERS & HESS
PARKER, CO**

This drawing is an instrument of service and shall remain the property of Short Elliott Hendrickson, Inc. (SEH). This drawing and the concepts and ideas contained herein shall not be used, reproduced, revised, or retained without the express written approval of SEH.

Submission or distribution of this drawing to meet official or regulatory requirements or for other purposes in connection with the project is not to be construed as publication in derogation of any of the rights of SEH.

COPYRIGHT ©
2020
SEH
All Rights Reserved.

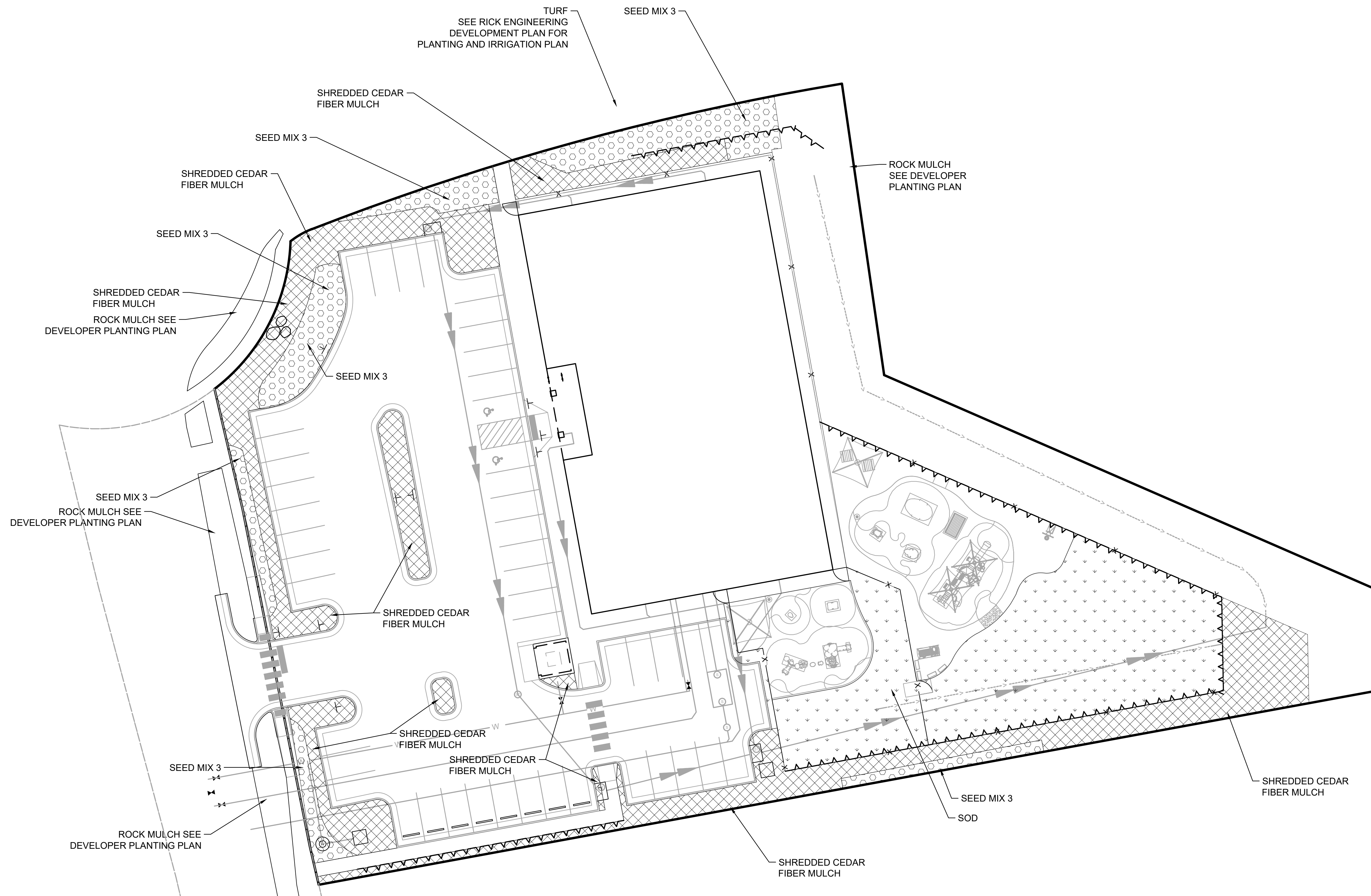
SEH Project NHOAC 156217
Checked By KW
Drawn By VT

Project Status Issue Date

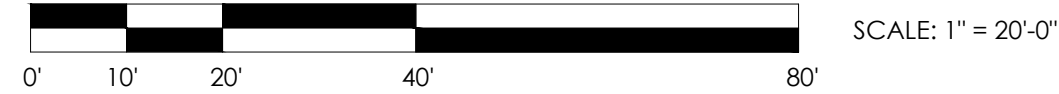
Rev. #	Description	Date
1	City Comments	01/15/2021
2	City Comments	04/09/2021
3	City Comments	06/7/2021
4	City Comments	06/25/2021

GROUNDCOVER DIAGRAM

L1.02



1 GROUNDCOVER DIAGRAM



- SOD
- SEED MIX 3
- MULCH

FINAL IRRIGATION PLAN AND SPECIFICATIONS TO BE SUPPLIED BY IRRIGATION CONTRACTOR.

NOTE:
THE LANDSCAPE WORKSHEET IS 1.8 SFE. A 1" IRRIGATION TAP IS APPROPRIATE IF THE FLOW RATE AND PRESSURE WORK FOR THE IRRIGATION DESIGN.

Groundcover Requirements	
Total Landscape Area	31,851 SF
Playground (By Other)	5,596 SF (18%)
Sod (Playground Area)	7,318 SF (23%)
Town of Parker, Seed Mix 3*	3,155 SF (10%)
Natural Cedar Fiber Mulch-minimum of 4" in depth over base of geotextile fabric.	7,134 SF (22%)
Developer installed Landscape rock	8,648 SF (27%)

* Town of Parker, Seed Mix 3 (Low-Growth Mix)	
25% Ephraim Crested Wheatgrass	
23% Sheep Fescue	
18% Perennial Ryegrass	
13% Canada Bluegrass	
12% Barley or Oats	
9% Blue Fescue	

NOT FOR CONSTRUCTION

Owner
New Horizon Academy
3405 Annapolis Lane
N., Suite 100
Plymouth, MN 55447
763.557.1111

Architect
Short Elliott Hendrickson, Inc.
2000 South Colorado Boulevard
Tower One, Suite 6000
Denver, Colorado 80222
720.540.6800

Landscape Architect
Short Elliott Hendrickson, Inc.
10901 Red Circle Drive
Suite 300
Minnetonka, MN 55343
952.912.2600

Civil Engineer
Short Elliott Hendrickson, Inc.
418 West Superior Street
Suite 200
Duluth, MN 55802
218.279.3000

Structural Engineer

Mechanical Engineer

Electrical Engineer

**NEW HORIZON ACADEMY -
CHAMBERS & HESS
PARKER, CO**

This drawing is an instrument of service and shall remain the property of Short Elliott Hendrickson, Inc. (SEH). This drawing and the concepts and ideas contained herein shall not be used, reproduced, revised, or retained without the express written approval of SEH.

Submission or distribution of this drawing to meet official or regulatory requirements or for other purposes in connection with the project is not to be construed as publication in derogation of any of the rights of SEH.

SEH Project: NHOAC 152217
Checked By: KW
Drawn By: VT

Copyright © 2020 SEH
All Rights Reserved

Project Status: Issue Date

Rev. #	Description	Date
1	City Comments	01/15/2021
2	City Comments	04/09/2021
3	City Comments	06/7/2021
4	City Comments	06/25/2021

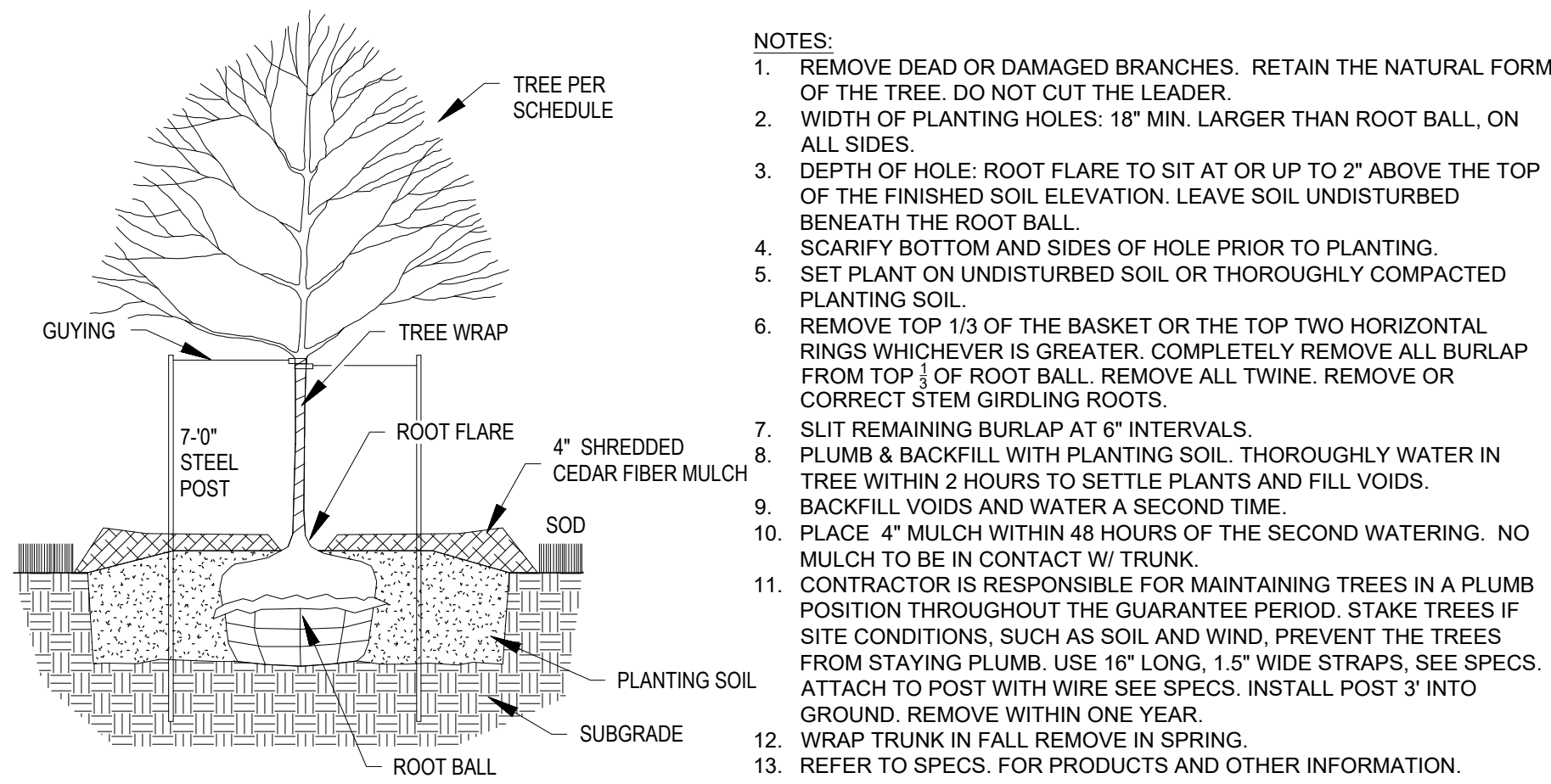
LANDSCAPE DETAILS

L1.03

LANDSCAPE SPECIFICATIONS

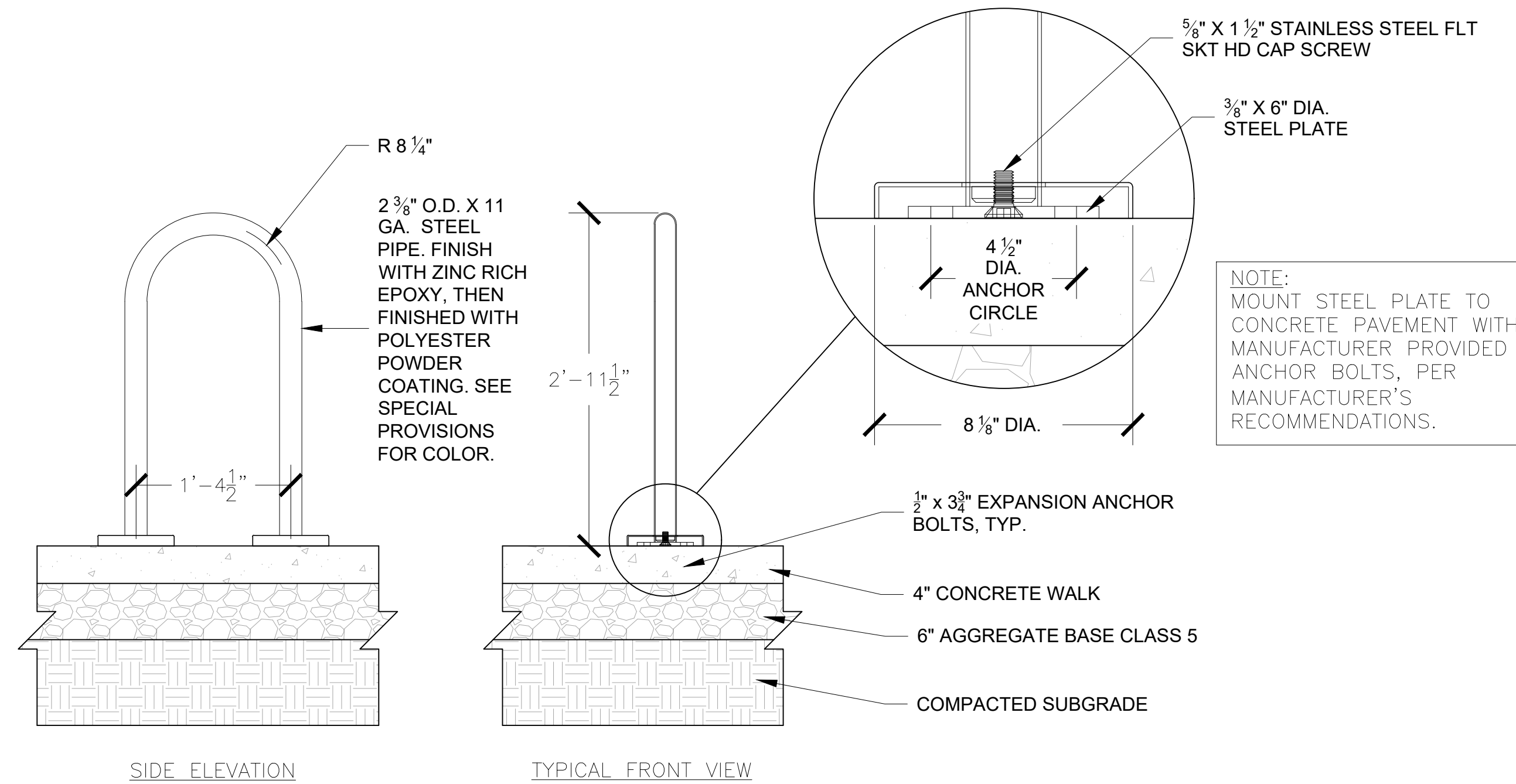
TREES, SHRUBS, AND PERENNIALS

1. REFERENCES
 - A. CDOT - COLORADO DEPARTMENT OF TRANSPORTATION, 2017 EDITION.
 - B. AMERICAN STANDARD FOR NURSERY STOCK, ANSI Z60.1-2014.
2. QUALITY ASSURANCE
 - A. WORK SHALL BE PERFORMED BY A LANDSCAPE CONTRACTOR WITH EXTENSIVE HORTICULTURE KNOWLEDGE, AND A MIN. OF 3 YEARS EXPERIENCE.
3. PRODUCTS
 - A. PLANTS: PROVIDE AS SPECIFIED ON PLANT SCHEDULE.
 - B. EDGING: RYERSON STEEL EDGING 3/8" X 5" W/ 18" STAKES, OR EQUAL.
 - C. MULCH: SHREDDED CEDAR FIBER MULCH, APPLIED A MINIMUM OF FOUR INCHES IN DEPTH, INSTALLED OVER A BASE OF GEOTEXTILE FABRIC.
 - D. WATER: CONTRACTOR TO PROVIDE.
 - E. PLANTING SOIL MIX: RICH SANDY LOAM, FREE OF DEBRIS AND SEEDS, AND CONFORMING TO CDOT 207 (TOPSOIL).
 - F. SOIL AMENDMENTS: CONFORMING TO CDOT 212 (SEEDING, FERTILIZER, SOIL CONDITIONS AND SODDING).
 - G. TREE WRAP: TWO-PLY WEATHER RESISTANT PAPER PRODUCT.
4. PLANTING DATES: SPRING PLANTING: APR. 1- JUNE 15. THESE DATES MAY BE EXTENDED IF DAYTIME TEMPS. REMAIN BELOW 80 DEGREES. FALL: SEPT. 30 - OCT. 30TH. DAYTIME TEMPS. NEED TO DROP BELOW 80 DEGREES BEFORE PLANTING BEGINS, AND MAY CONTINUE UNTIL FREEZE UP. CONIFEROUS TREES AUG. 15- OCT. 1ST. PLANT UNDER FAVORABLE WEATHER CONDITIONS, DO NO PLANT DURING DAYS OF EXTREME HEAT.
5. EXECUTION
 - A. PLANT INTO PREPARED PLANTING BEDS.
 - B. PRIOR TO DIGGING, CONTRACTOR TO HAVE UTILITIES LOCATED AND MARKED.
 - C. CONTRACTOR TO NOTIFY LANDSCAPE ARCHITECT 3 DAYS IN ADVANCE OF WHEN PLANTING WORK WILL OCCUR.
 - D. INSTALL TREES, SHRUBS, AND PERENNIALS PER PLANTING DETAILS. ADJUST LOCATION IF IN CONFLICT WITH UTILITIES. VERIFY NEW LOCATION WITH LANDSCAPE ARCHITECT PRIOR TO PLANTING.
 - E. SEPARATE ALL SHRUB BEDS FROM SOD AREAS WITH METAL EDGER.
 - F. CLEAN-UP ENTIRE SITE FOLLOWING PLANTING OPERATIONS.
6. ACCEPTANCE OF PLANTING WORK
 - A. CONTRACTOR TO NOTIFY OWNER WHEN PLANTING WORK IS COMPLETE FOR REVIEW AND PUNCH LIST.
 - B. CONTRACTOR TO WATER AND MAINTAIN THE TREES, SHRUBS, AND PERENNIALS UNTIL OWNER ACCEPTANCE.
 - C. OWNER WILL GIVE ACCEPTANCE OF WORK, FOLLOWING SATISFACTORY CORRECTION OF PUNCH LIST ITEMS.
 - D. WATERING AND REGULAR LANDSCAPE MAINTENANCE OF TREES, SHRUBS, AND PERENNIALS WILL BE OWNERS RESPONSIBILITY FOLLOWING OWNER ACCEPTANCE OF WORK.
7. GUARANTEE PERIOD
 - A. CONTRACTOR TO WARRANTY TREES, SHRUBS, AND PERENNIALS FOR TWO YEARS FOLLOWING ACCEPTANCE OF WORK BY OWNER.
 - B. CONTRACTOR TO MAINTAIN THE TREES IN A PLUMB POSITION THROUGHOUT THE GUARANTEE PERIOD. CONTRACTOR TO REMOVE ALL STAKING/ WIRING/ STRAPS FROM FREES AT THE END OF THE GUARANTEE PERIOD.
 - C. REPLACEMENTS: AT THE END OF THE GUARANTEE PERIOD, ALL PLANTS WHICH ARE UNHEALTHY, DEAD, NOT HAVING A NORMAL DENSITY, SIZE, SHAPE OR COLOR SHALL BE REPLACED. REPLACEMENTS SHALL MATCH CALIPER AND/OR HEIGHT OF THE OTHER PLANTS AT TIME OF REPLACEMENT. SELECTION OF REPLACEMENT MATERIAL AND INSTALLATION PRACTICES SHALL FOLLOW THE REQUIREMENTS OF THE DRAWINGS AND SPECIFICATIONS.
8. IRRIGATION
 - A. CONFORM TO THE REQUIREMENTS OF CDOT 107.14 (INTERRUPTION OF IRRIGATION WATER FLOW), CDOT 623 (IRRIGATION SYSTEM) AND ALL OTHER APPLICABLE CDOT IRRIGATION MATERIALS AND CONSTRUCTION REQUIREMENTS.



1 TREE PLANTING DETAIL
NOT TO SCALE

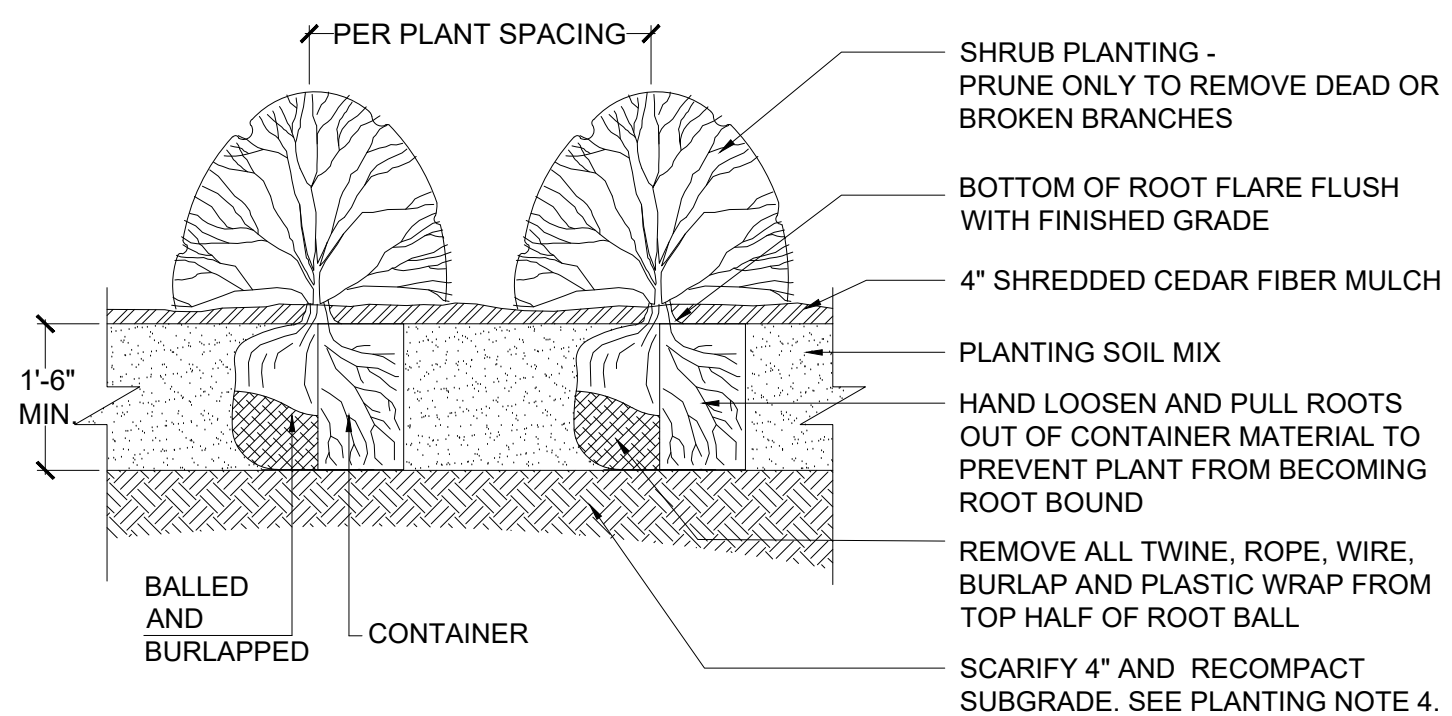
- NOTES:**
1. REMOVE DEAD OR DAMAGED BRANCHES. RETAIN THE NATURAL FORM OF THE TREE. DO NOT CUT THE LEADER.
 2. WIDTH OF PLANTING HOLES: 18" MIN. LARGER THAN ROOT BALL, ON ALL SIDES.
 3. DEPTH OF HOLE: ROOT FLARE TO SIT AT OR UP TO 2" ABOVE THE TOP OF THE FINISHED SOIL ELEVATION. LEAVE SOIL UNDISTURBED BENEATH THE ROOT BALL.
 4. SCARIFY BOTTOM AND SIDES OF HOLE PRIOR TO PLANTING.
 5. SET PLANT ON UNDISTURBED SOIL OR THOROUGHLY COMPACTED PLANTING SOIL.
 6. REMOVE TOP 1/3 OF THE BASKET OR THE TOP TWO HORIZONTAL RINGS WHICHEVER IS GREATER. COMPLETELY REMOVE ALL BURLAP FROM TOP 1/3 OF ROOT BALL. REMOVE ALL TWINE. REMOVE OR CORRECT STEM GIRDLING ROOTS.
 7. SLIT REMAINING BURLAP AT 6" INTERVALS.
 8. PLUMB & BACKFILL WITH PLANTING SOIL. THOROUGHLY WATER IN TREE WITHIN 2 HOURS TO SETTLE PLANTS AND FILL VOIDS.
 9. BACKFILL VOIDS AND WATER A SECOND TIME.
 10. PLACE 4" MULCH WITHIN 48 HOURS OF THE SECOND WATERING. NO MULCH TO BE IN CONTACT W/ TRUNK.
 11. CONTRACTOR IS RESPONSIBLE FOR MAINTAINING TREES IN A PLUMB POSITION THROUGHOUT THE GUARANTEE PERIOD. STAKE TREES IF SITE CONDITIONS, SUCH AS SOIL AND WIND, PREVENT THE TREES FROM STAYING PLUMB. USE 16" LONG, 1.5" WIDE STRAPS, SEE SPECS. ATTACH TO POST WITH WIRE SEE SPECS. INSTALL POST 3' INTO GROUND. REMOVE WITHIN ONE YEAR.
 12. WRAP TRUNK IN FALL REMOVE IN SPRING.
 13. REFER TO SPECS. FOR PRODUCTS AND OTHER INFORMATION.



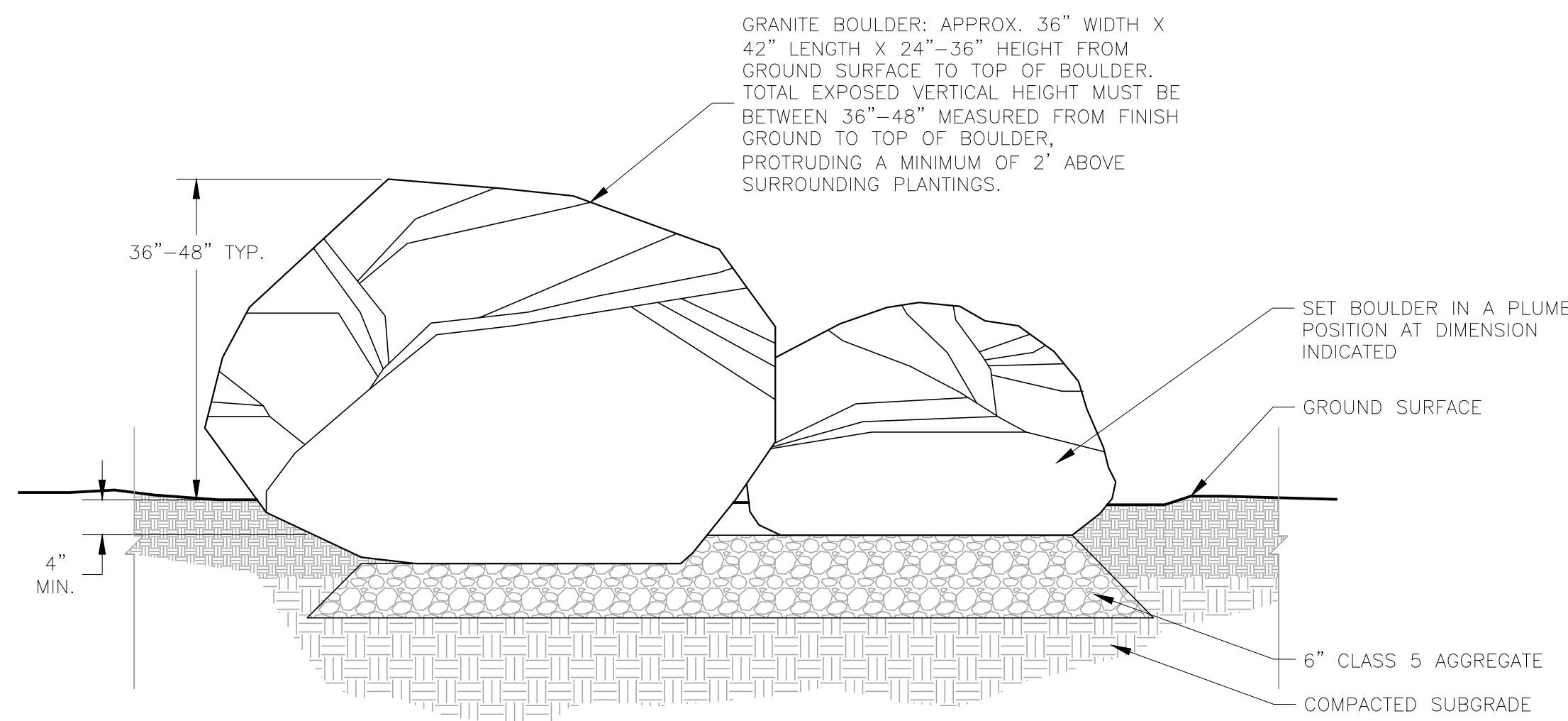
4 BIKE RACK DETAIL
NOT TO SCALE

LANDSCAPING SHALL BE PLANTED AND MAINTAINED IN A NEAT, CLEAN AND HEALTHY CONDITION BY THE CONTRACTOR. THIS SHALL INCLUDE PROPER PRUNING, MOVING AND AERATION OF LAWNS, REPLACEMENT OF MULCH, WEEDING, REMOVAL OF LITTER AND THE REGULAR WATERING OF ALL PLANTINGS. IRRIGATION SHALL BE MAINTAINED TO MAXIMIZE WATER CONSUMPTION. SHOULD ANY PLANT MATERIAL DIE, THE CONTRACTOR, SUCCESSOR, OR ASSIGNS SHALL BE RESPONSIBLE FOR THE REPLACEMENT OF PLANT(S) WITHIN ONE PLANTING SEASON. REPLACEMENT OF PLANT MATERIALS SHALL OCCUR AT THE FOLLOWING RATE.

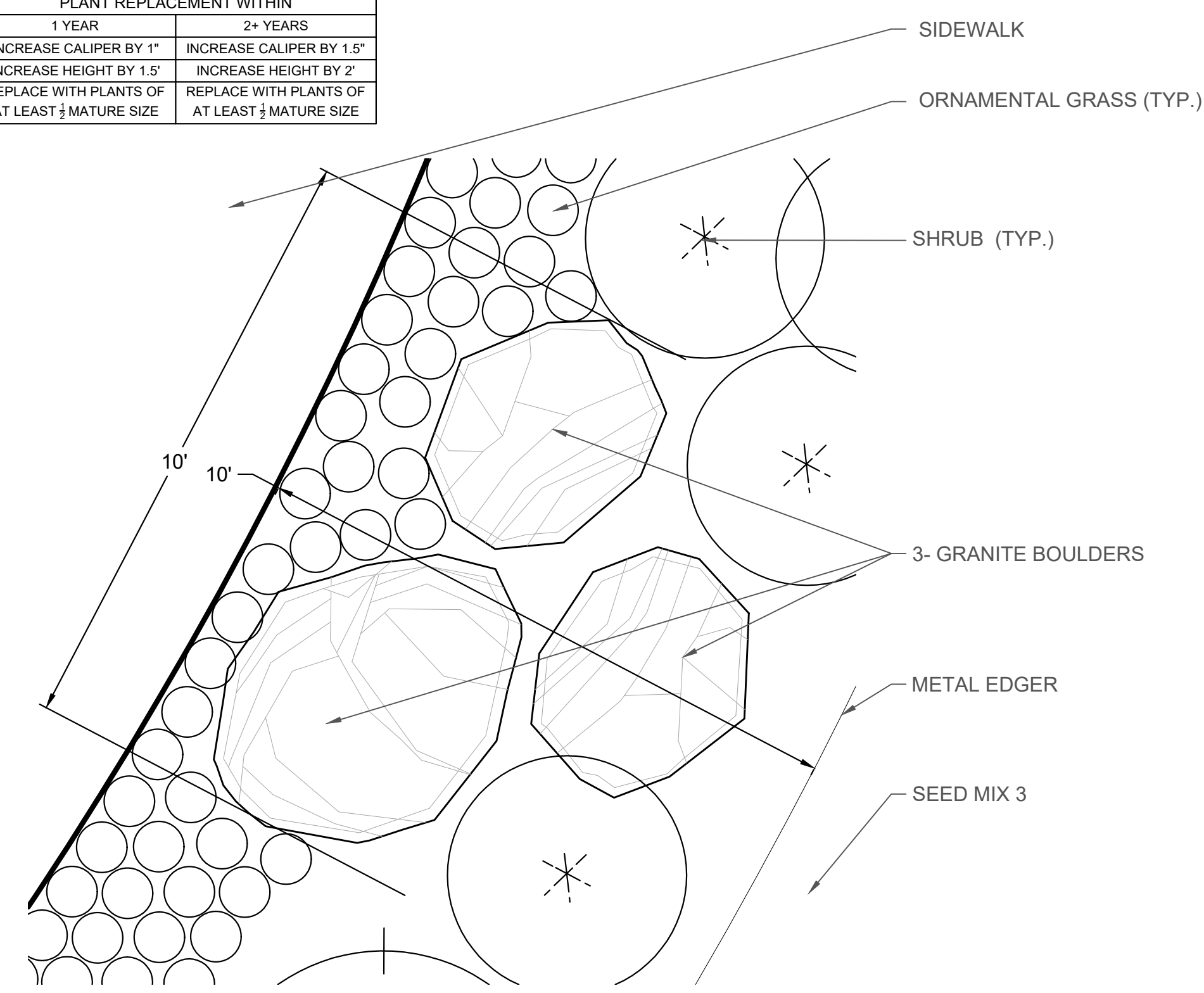
TYPE	PLANT REPLACEMENT WITHIN	
	1 YEAR	2+ YEARS
TREE- DECIDUOUS	INCREASE CALIPER BY 1"	INCREASE CALIPER BY 1.5"
TREE- CONIFEROUS	INCREASE HEIGHT BY 1.5'	INCREASE HEIGHT BY 2'
SHRUB	REPLACE WITH PLANTS OF AT LEAST 1/2 MATURE SIZE	REPLACE WITH PLANTS OF AT LEAST 1/2 MATURE SIZE



2 SHRUB PLANTING DETAIL
NOT TO SCALE



3 BOULDER SECTION \"VERTICAL HEIGHT ELEMENT\"
NOT TO SCALE



5 BOULDER PLAN VIEW \"VERTICAL HEIGHT ELEMENT\"
NOT TO SCALE

X:\WORKING\152217\FINAL\050815\CONTRACTOR\2020\PLAN\LANDSCAPE\L1.03.DWG 11/23/2020 4:28 PM