



Building a Better World for All of Us®



Owner
New Horizon Academy
3405 Annapolis Lane
N., Suite 100
Plymouth, MN 55447
763.557.1111

Architect
Short Elliott Hendrickson, Inc.
2000 South Colorado Boulevard
Tower One, Suite 6000
Denver, Colorado 80222
720.540.6800

Landscape Architect
Short Elliott Hendrickson, Inc.
10901 Reed Circle Drive
Suite 300
Minnetonka, MN 55343
952.912.2600

Civil Engineer
Short Elliott Hendrickson, Inc.
2000 South Colorado Boulevard
Tower One, Suite 6000
Denver, Colorado 80222
720.540.6800

Structural Engineer
Short Elliott Hendrickson, Inc.
3535 Vadnais Center Drive
St. Paul, MN 55110
651.490.2000

Mechanical Engineer
Short Elliott Hendrickson, Inc.
3535 Vadnais Center Drive
St. Paul, MN 55110
651.490.2000

Electrical Engineer
Short Elliott Hendrickson, Inc.
3535 Vadnais Center Drive
St. Paul, MN 55110
651.490.2000

New Horizon Academy
NEW HORIZON ACADEMY - DOUGLAS 234 FILING, NO. 6
PARKER, CO

This drawing is an instrument of service and shall remain the property of Short Elliott Hendrickson, Inc. (SEH). This drawing and the concepts and ideas contained herein shall not be used, reproduced, revised, or retained without the express written approval of SEH.

Submission or distribution of this drawing to meet official or regulatory requirements or for other purposes in connection with the project is not to be construed as publication in derogation of any of the rights of SEH.

COPYRIGHT © 2021
Short Elliott Hendrickson, Inc.
All Rights Reserved

SEH Project NHOAC 156217
Checked By DRH
Drawn By AMP

Project Status CONSTRUCTION SET
Issue Date 6/25/2021

Revision Issue

Rev. #	Description	Date

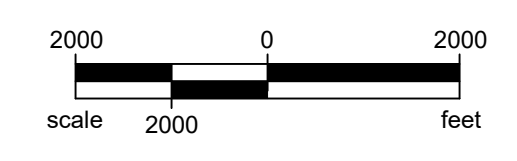
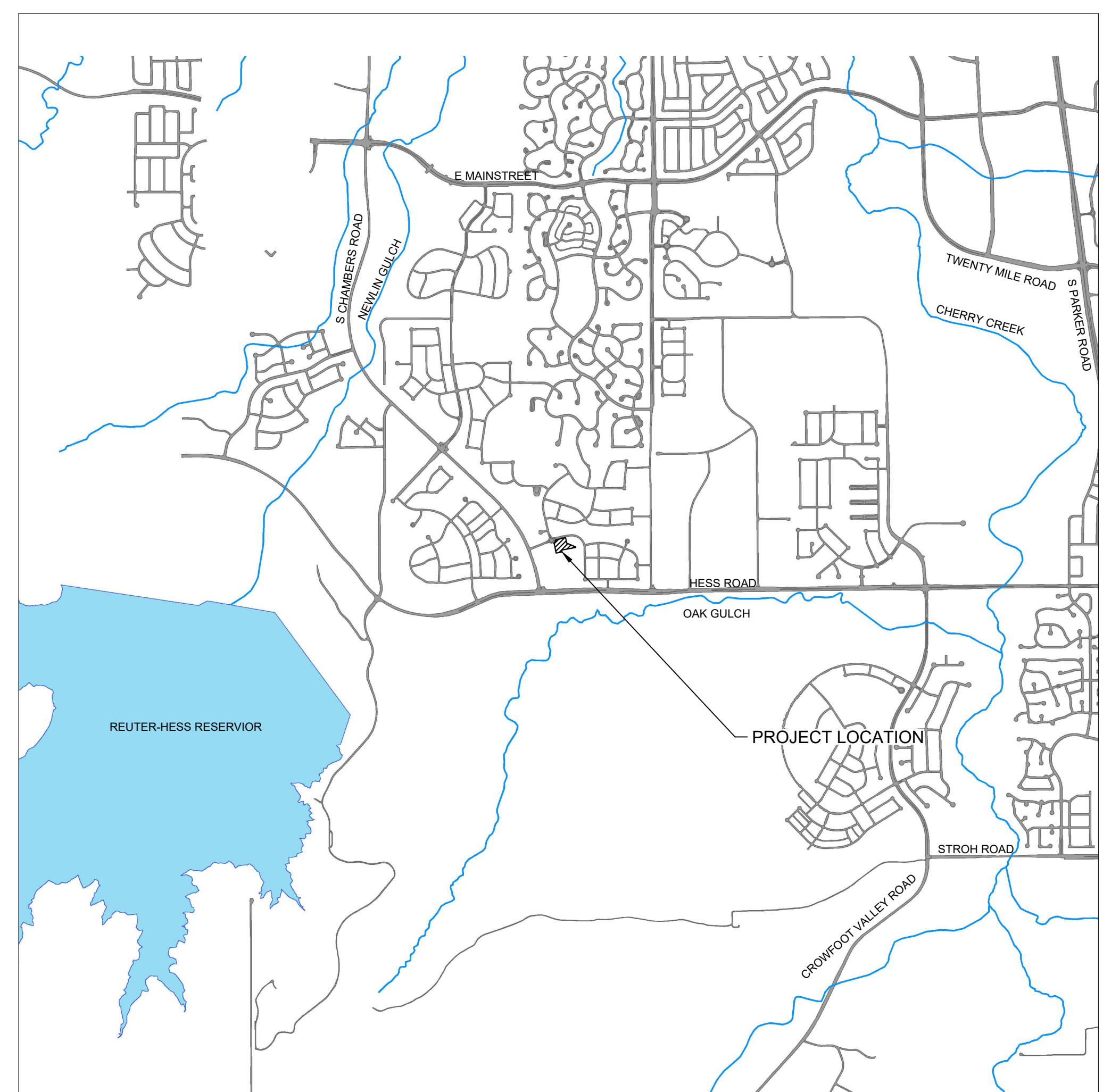
COVER SHEET

C0.0

DOUGLAS 234, FILING NO. 6

A PORTION OF THE SOUTHWEST QUARTER OF THE SOUTHWEST QUARTER OF SECTION 29,
TOWNSHIP 6 SOUTH, RANGE 66 WEST OF THE 6TH PRINCIPAL MERIDIAN
TOWN OF PARKER, COUNTY OF DOUGLAS, STATE OF COLORADO
1.651 ACRES

SITE PLANS FOR NEW HORIZON ACADEMY



PLAN SHEET INDEX	
SHEET NUMBER	SHEET TITLE
C0.0	COVER SHEET
C1.0	EXISTING CONDITIONS
C1.1	OVERALL SITE
C1.2	BUILDING SITE LAYOUT
C1.3	PARKING LOT SITE LAYOUT
C1.4	RETAINING WALL PLAN
C1.5	RETAINING WALL PROFILES
C2.0	GRADING PLAN
C5.0	SIGNAGE PLAN
A2.1 - A2.2	PRELIMINARY EXTERIOR ELEVATIONS
A2.3	PRELIMINARY ELEVATIONS
A2.4 - A2.5	PERSPECTIVES
ES.01	PHOTOMETRIC SITE PLAN
ES.02	LIGHT FIXTURE CUTSHEETS
ES.03	LIGHT FIXTURE CUTSHEETS
L1.01	LANDSCAPE PLAN
L1.02	IRRIGATION DIAGRAM
L1.03	LANDSCAPE DETAILS
	PLAYGROUND PLANS

- EXISTING**
- RIGHT OF WAY
 - PERMANENT EASEMENT
 - PROPERTY LINE
 - △ XX HORIZONTAL CONTROL POINT
 - ⊙ BENCHMARK
 - SURVEY MARKER
 - ⊙ SOIL BORING
 - SAN FM LIFT SANITARY SEWER AND MANHOLE
 - FM FORCE MAIN AND LIFT STATION
 - W SANITARY SEWER SERVICE & CLEANOUT
 - WATER MAIN, HYDRANT, VALVE AND MANHOLE
 - WATER SERVICE AND CURB STOP BOX
 - STM STORM SEWER, MANHOLE AND CATCH BASIN
 - G GULVERT AND APRON ENDWALL
 - G GAS MAIN, VALVE, VENT AND METER
 - HH HANDHOLE
 - FO BURIED FIBER OPTIC CABLE AND MANHOLE
 - T-BUR BURIED PHONE CABLE, PEDESTAL AND MANHOLE
 - TV-BUR BURIED TV CABLE, PEDESTAL AND MANHOLE
 - E BURIED ELECTRIC CABLE, PEDESTAL, MANHOLE, TRANSFORMER AND METER
 - OVERHEAD WIRE, POLE AND GUY WIRE
 - LIGHT POLE
 - TRAFFIC SIGNAL
 - STREET NAME SIGN
 - SIGN (NON STREET NAME)
 - ==== RAILROAD TRACKS
 - ⊙ DECIDUOUS AND CONIFEROUS TREE
 - ⊙ BUSH / SHRUB AND STUMP
 - EDGE OF WOODED AREA
 - WET WETLAND
 - BUILDING
 - X FENCE (UNIDENTIFIED)
 - X BARBED WIRE FENCE
 - XC CHAIN LINK FENCE
 - XE ELECTRIC WIRE FENCE
 - XWD WOOD FENCE
 - XWW WOVEN WIRE FENCE
 - PLATE BEAM GUARDRAIL
 - CABLE GUARDRAIL
 - O P POST / BOLLARD
 - RETAINING WALL
- PROPOSED**
- 6+00 --- STREET CENTERLINE
 - RIGHT-OF-WAY
 - PERMANENT EASEMENT
 - TEMPORARY EASEMENT
 - CONSTRUCTION LIMITS
 - FM SANITARY SEWER, BULKHEAD AND MANHOLE
 - SANITARY SERVICE AND CLEANOUT
 - HW WATER MAIN, TEE, HYDRANT, BULKHEAD AND VALVE
 - W WATER VALVE MANHOLE, REDUCER, BEND AND CROSS
 - WATER SERVICE AND CURB STOP BOX
 - STM STORM SEWER, MANHOLE AND CATCH BASIN
 - GULVERT AND APRON ENDWALL
 - DRAIN TILE
 - DITCH / SWALE
 - RIPRAP
 - STREET NAME SIGN
 - SIGN (NON STREET NAME)
 - RETAINING WALL

BASIS OF BEARINGS:
THE SOUTH LINE OF THE SOUTHEAST QUARTER OF SECTION 29 TOWNSHIP 6 SOUTH, RANGE 66 WEST, 6TH P.M. BEARING SOUTH 89°15'13" WEST AS SHOWN ON FINAL PLAT DOUGLAS 234 FILING NO. 1.

BENCHMARK
BENCHMARK IS BY GPS OBSERVATION NAVD 88. SET SITE BENCHMARK AT NORTHWEST CORNER OF INLET ON CHAMBERS RD. APPROXIMATELY 200'+/- NORTH OF HESS RD.

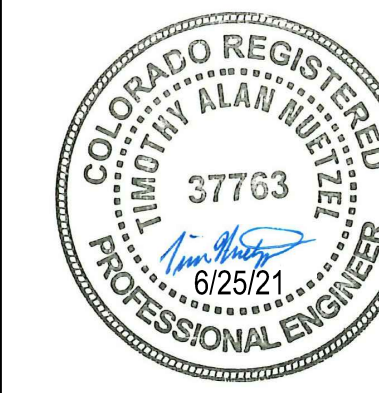
LEGAL DESCRIPTION:
THIS IS AN AS-SURVEYED PERIMETER DESCRIPTION AROUND THE SUBJECT PROPERTY AND IS NOT INTENDED TO REPLACE THE RECORD LEGAL DESCRIPTION.

LOT 11, DOUGLAS 234, FILING 6, TOWN OF PARKER, COUNTY OF DOUGLAS, STATE OF COLORADO.

Save: 6/24/2021 7:30 PM: appop Plot: 6/24/2021 11:18 PM: X:\KONNINHOC\156217\5-final-dsgn\51-drawings\10-Civil\cd\dwg\sheet\Site Plans\CD_NHOAC\156217_Site Title.dwg



Building a Better World for All of Us®



Owner
New Horizon Academy
3405 Annapolis Lane
N., Suite 100
Plymouth, MN 55447
763.557.1111

Architect
Short Elliott Hendrickson, Inc.
2000 South Colorado Boulevard
Tower One, Suite 6000
Denver, Colorado 80222
720.540.6800

Landscape Architect
Short Elliott Hendrickson, Inc.
10901 Red Circle Drive
Suite 300
Minnetonka, MN 55343
952.912.2800

Civil Engineer
Short Elliott Hendrickson, Inc.
2000 South Colorado Boulevard
Tower One, Suite 6000
Denver, Colorado 80222
720.540.6800

Structural Engineer
Short Elliott Hendrickson, Inc.
3535 Vadnais Center Drive
St. Paul, MN 55110
651.490.2000

Mechanical Engineer
Short Elliott Hendrickson, Inc.
3535 Vadnais Center Drive
St. Paul, MN 55110
651.490.2000

Electrical Engineer
Short Elliott Hendrickson, Inc.
3535 Vadnais Center Drive
St. Paul, MN 55110
651.490.2000

NEW HORIZON ACADEMY - DOUGLAS 234 FILING, NO. 6
PARKER, CO

This drawing is an instrument of service and shall remain the property of Short Elliott Hendrickson, Inc. (SEH). This drawing and the concepts and ideas contained herein shall not be used, reproduced, revised, or retained without the express written approval of SEH.

Substitution or distribution of this drawing for most official or regulatory requirements or for other purposes in connection with the project is not to be construed as modification to the original scope of the rights of SEH.

COPYRIGHT © 2021
Short Elliott Hendrickson, Inc.
All Rights Reserved

SEH Project: NHOC 156217
Checked By: DRH
Drawn By: AMP

Project Status: CONSTRUCTION SET
Issue Date: 6/25/2021

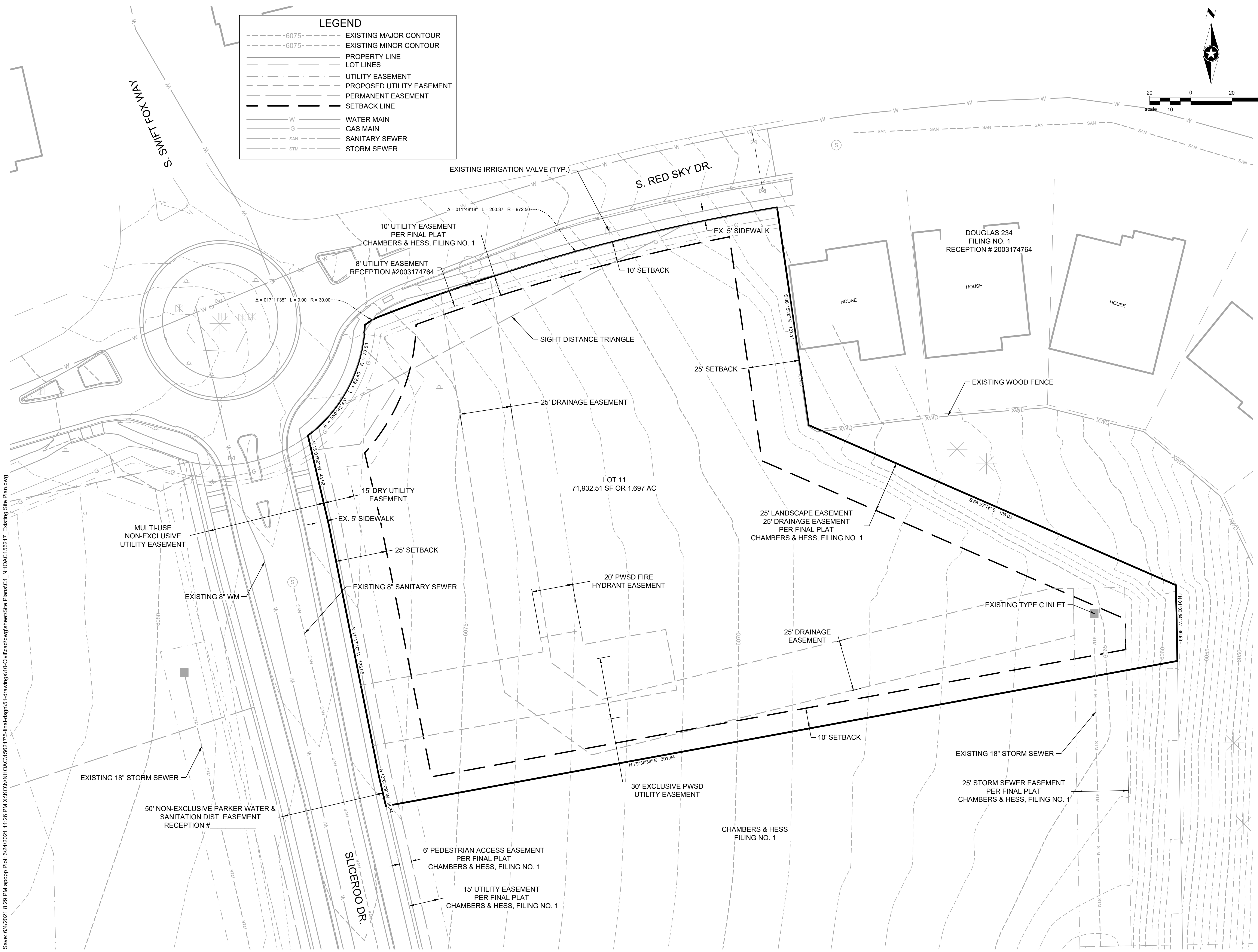
Revision Issue		
Rev. #	Description	Date

EXISTING CONDITIONS

C1.0

LEGEND

- - - - -6075- - - - - EXISTING MAJOR CONTOUR
- - - - -6075- - - - - EXISTING MINOR CONTOUR
- PROPERTY LINE
- LOT LINES
- - - - - UTILITY EASEMENT
- - - - - PROPOSED UTILITY EASEMENT
- - - - - PERMANENT EASEMENT
- SETBACK LINE
- W ——— WATER MAIN
- G ——— GAS MAIN
- SAN ——— SANITARY SEWER
- STM ——— STORM SEWER



Save: 6/4/2021 8:29 PM apopp Plot: 6/24/2021 11:26 PM X:\KON\NHOC\156217\5-final-dsgn\51-drawings\10-Civil\cd\dwg\sheet\Site Plans\C1_NHOC\156217_Existing Site Plan.dwg



Owner
New Horizon Academy
3405 Annapolis Lane
N., Suite 100
Flynnville, MN 55447
763.557.1111

Architect
Short Elliott Hendrickson, Inc.
2000 South Colorado Boulevard
Tower One, Suite 6000
Denver, Colorado 80222
720.540.6800

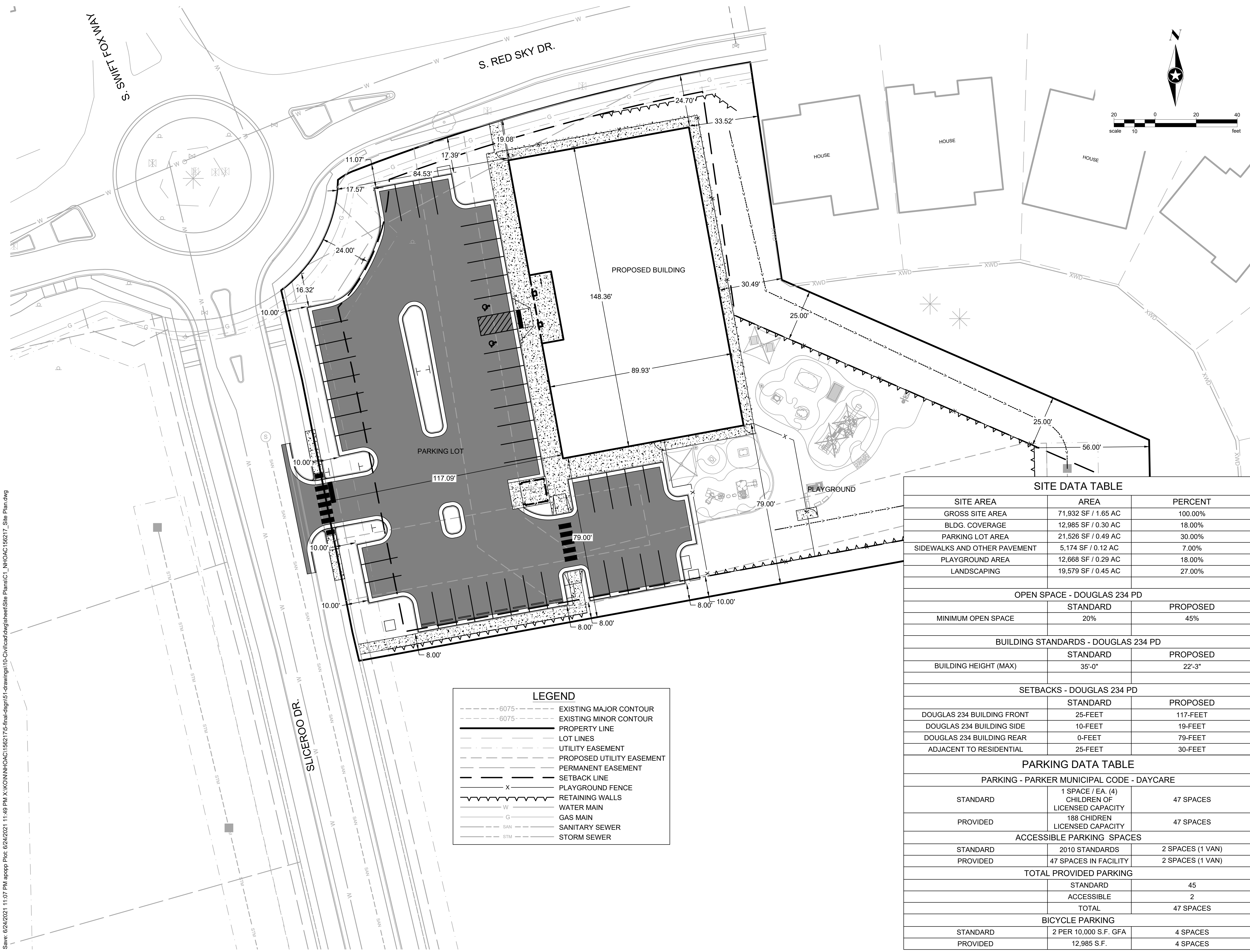
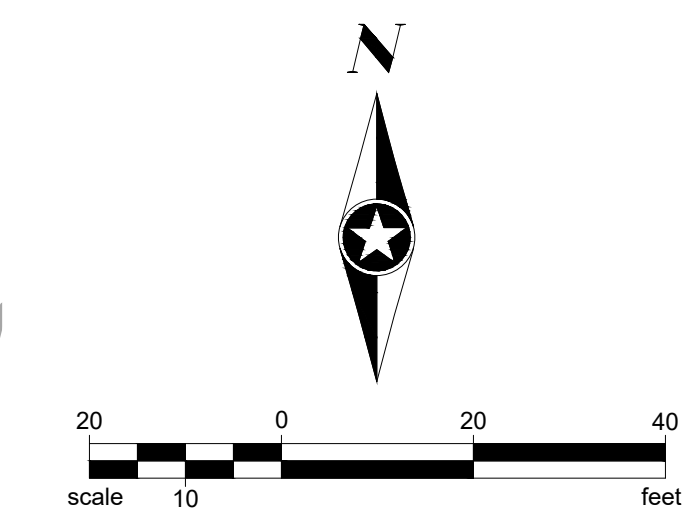
Landscape Architect
Short Elliott Hendrickson, Inc.
10901 Red Circle Drive
Suite 300
Minnetonka, MN 55343
952.912.2800

Civil Engineer
Short Elliott Hendrickson, Inc.
2000 South Colorado Boulevard
Tower One, Suite 6000
Denver, Colorado 80222
720.540.6800

Structural Engineer
Short Elliott Hendrickson, Inc.
3535 Vadnais Center Drive
St. Paul, MN 55110
651.490.2000

Mechanical Engineer
Short Elliott Hendrickson, Inc.
3535 Vadnais Center Drive
St. Paul, MN 55110
651.490.2000

Electrical Engineer
Short Elliott Hendrickson, Inc.
3535 Vadnais Center Drive
St. Paul, MN 55110
651.490.2000



LEGEND

- - - - -6075- - - - - EXISTING MAJOR CONTOUR
- - - - -6075- - - - - EXISTING MINOR CONTOUR
- PROPERTY LINE
- LOT LINES
- UTILITY EASEMENT
- PROPOSED UTILITY EASEMENT
- PERMANENT EASEMENT
- SETBACK LINE
- x ————— PLAYGROUND FENCE
- ~~~~~ RETAINING WALLS
- W ————— WATER MAIN
- G ————— GAS MAIN
- SAN ————— SANITARY SEWER
- STM ————— STORM SEWER

SITE DATA TABLE

SITE AREA	AREA	PERCENT
GROSS SITE AREA	71,932 SF / 1.65 AC	100.00%
BLDG. COVERAGE	12,985 SF / 0.30 AC	18.00%
PARKING LOT AREA	21,526 SF / 0.49 AC	30.00%
SIDEWALKS AND OTHER PAVEMENT	5,174 SF / 0.12 AC	7.00%
PLAYGROUND AREA	12,668 SF / 0.29 AC	18.00%
LANDSCAPING	19,579 SF / 0.45 AC	27.00%

OPEN SPACE - DOUGLAS 234 PD

	STANDARD	PROPOSED
MINIMUM OPEN SPACE	20%	45%

BUILDING STANDARDS - DOUGLAS 234 PD

	STANDARD	PROPOSED
BUILDING HEIGHT (MAX)	35'-0"	22'-3"

SETBACKS - DOUGLAS 234 PD

	STANDARD	PROPOSED
DOUGLAS 234 BUILDING FRONT	25-FEET	117-FEET
DOUGLAS 234 BUILDING SIDE	10-FEET	19-FEET
DOUGLAS 234 BUILDING REAR	0-FEET	79-FEET
ADJACENT TO RESIDENTIAL	25-FEET	30-FEET

PARKING DATA TABLE

PARKING - PARKER MUNICIPAL CODE - DAYCARE

	STANDARD	PROVIDED
1 SPACE / EA. (4) CHILDREN OF LICENSED CAPACITY	47 SPACES	
188 CHILDREN LICENSED CAPACITY		47 SPACES

ACCESSIBLE PARKING SPACES

	STANDARD	PROVIDED
2010 STANDARDS		2 SPACES (1 VAN)
47 SPACES IN FACILITY		2 SPACES (1 VAN)

TOTAL PROVIDED PARKING

	STANDARD	PROVIDED
TOTAL	45	47 SPACES

BICYCLE PARKING

	STANDARD	PROVIDED
2 PER 10,000 S.F. GFA	4 SPACES	
12,985 S.F.		4 SPACES

NEW HORIZON ACADEMY - DOUGLAS 234 FILING, NO. 6
PARKER, CO

This drawing is an instrument of service and shall remain the property of Short Elliott Hendrickson, Inc. (SEH). This drawing and the concepts and ideas contained herein shall not be used, reproduced, revised, or retained without the express written approval of SEH.

Substitution or distribution of this drawing to most officials or regulatory requirements or for other purposes in connection with the project is not to be construed as modification in derogation of any of the rights of SEH.

Copyright © 2021
Short Elliott Hendrickson, Inc.
All Rights Reserved.

SEH Project: NHOAC 156217
Checked By: DRH
Drawn By: AMP

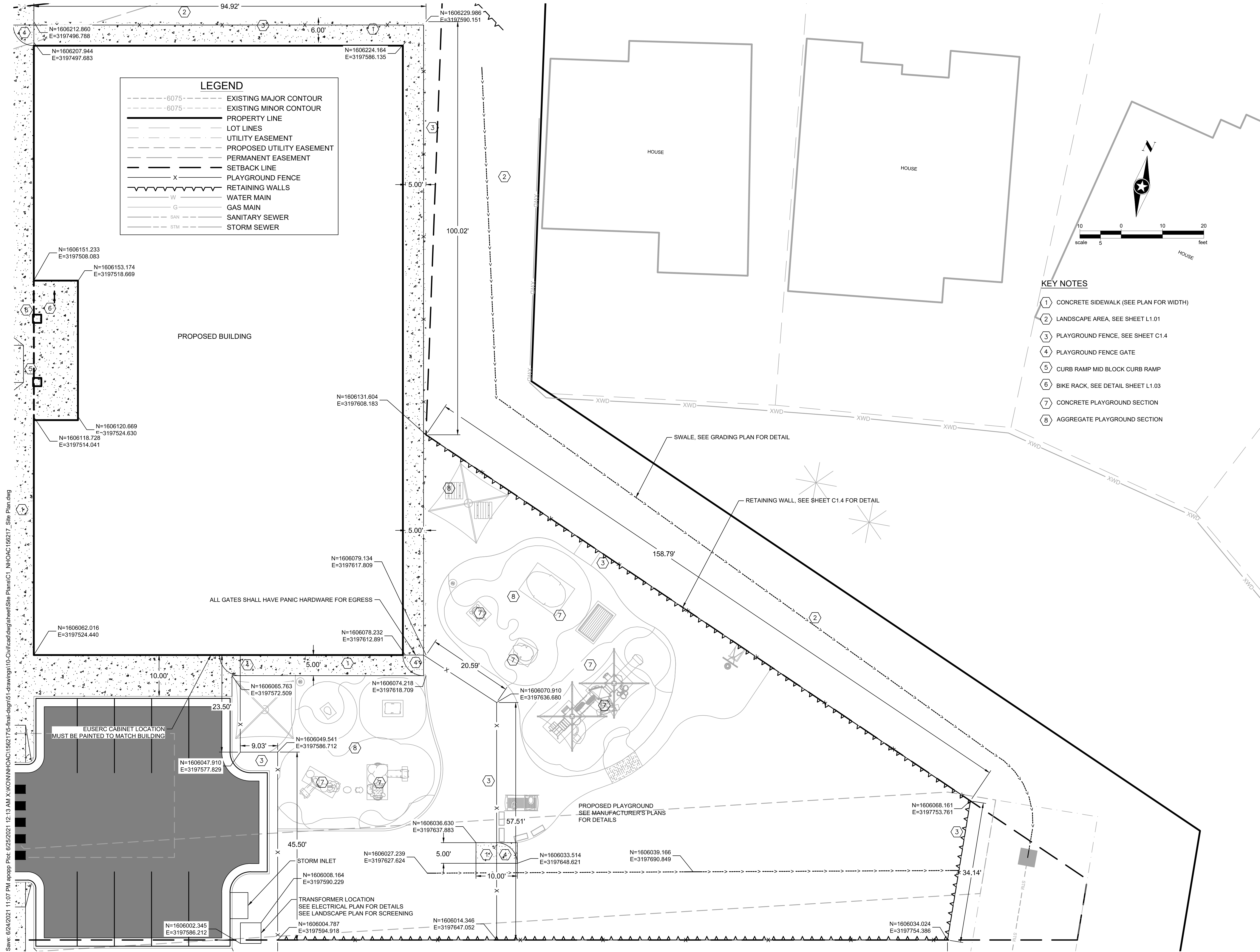
Project Status: CONSTRUCTION SET
Issue Date: 6/25/2021

Revision Issue

Rev. #	Description	Date

OVERALL SITE

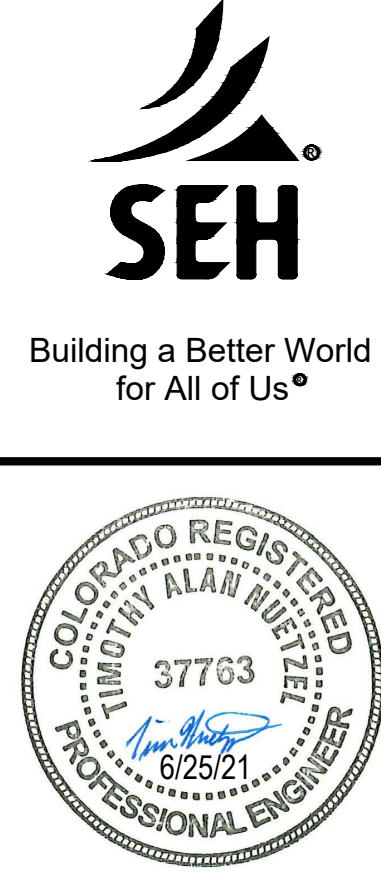
C1.1



LEGEND

- - - - -6075- - - - - EXISTING MAJOR CONTOUR
- - - - -6075- - - - - EXISTING MINOR CONTOUR
- PROPERTY LINE
- LOT LINES
- UTILITY EASEMENT
- PROPOSED UTILITY EASEMENT
- PERMANENT EASEMENT
- SETBACK LINE
- X ————— PLAYGROUND FENCE
- RETAINING WALLS
- W ————— WATER MAIN
- G ————— GAS MAIN
- SAN ————— SANITARY SEWER
- STM ————— STORM SEWER

- KEY NOTES**
- 1 CONCRETE SIDEWALK (SEE PLAN FOR WIDTH)
 - 2 LANDSCAPE AREA, SEE SHEET L1.01
 - 3 PLAYGROUND FENCE, SEE SHEET C1.4
 - 4 PLAYGROUND FENCE GATE
 - 5 CURB RAMP MID BLOCK CURB RAMP
 - 6 BIKE RACK, SEE DETAIL SHEET L1.03
 - 7 CONCRETE PLAYGROUND SECTION
 - 8 AGGREGATE PLAYGROUND SECTION



Owner
 New Horizon Academy
 3405 Annapolis Lane
 N., Suite 100
 Plymouth, MN 55447
 763.557.1111

Architect
 Short Elliott Hendrickson, Inc.
 2000 South Colorado Boulevard
 Tower One, Suite 6000
 Denver, Colorado 80222
 720.540.6800

Landscape Architect
 Short Elliott Hendrickson, Inc.
 19501 Red Circle Drive
 Suite 300
 Minnetonka, MN 55343
 952.912.2600

Civil Engineer
 Short Elliott Hendrickson, Inc.
 2000 South Colorado Boulevard
 Tower One, Suite 6000
 Denver, Colorado 80222
 720.540.6800

Structural Engineer
 Short Elliott Hendrickson, Inc.
 3535 Vadnais Center Drive
 St. Paul, MN 55110
 651.490.2000

Mechanical Engineer
 Short Elliott Hendrickson, Inc.
 3535 Vadnais Center Drive
 St. Paul, MN 55110
 651.490.2000

Electrical Engineer
 Short Elliott Hendrickson, Inc.
 3535 Vadnais Center Drive
 St. Paul, MN 55110
 651.490.2000

NEW HORIZON ACADEMY - DOUGLAS 234 FILING, NO. 6
 PARKER, CO

This drawing is an instrument of service and shall remain the property of Short Elliott Hendrickson, Inc. (SEH). This drawing and the concepts and ideas contained herein shall not be used, reproduced, revised, or retained without the express written approval of SEH.

Submission or distribution of this drawing to meet official or regulatory requirements or for other purposes in connection with the project is not to be construed as publication in derogation of any of the rights of SEH.

COPYRIGHT © 2021
 Short Elliott Hendrickson, Inc.
 All Rights Reserved

SEH Project NHOC 156217
Checked By DRH
Drawn By AMP

Project Status CONSTRUCTION SET
Issue Date 6/25/2021

Revision Issue

Rev. #	Description	Date

BUILDING SITE LAYOUT

C1.2

Save: 6/24/2021 11:07 PM appop Plot: 6/25/2021 12:13 AM X:\KON\NHOC\156217\5-final-dgn\51-drawings\10-Civil\cd\dwg\sheet\Site Plans\C1_NHOC\156217_Site Plan.dwg

KEY NOTES

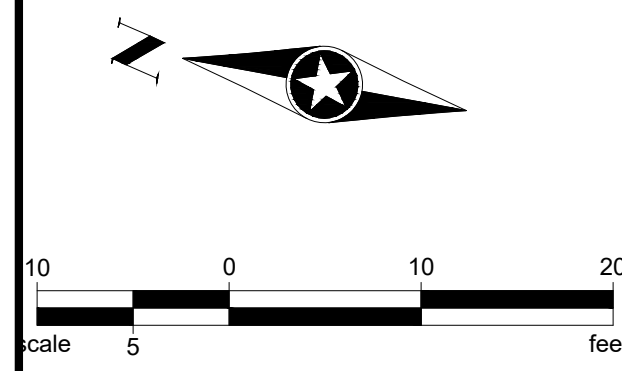
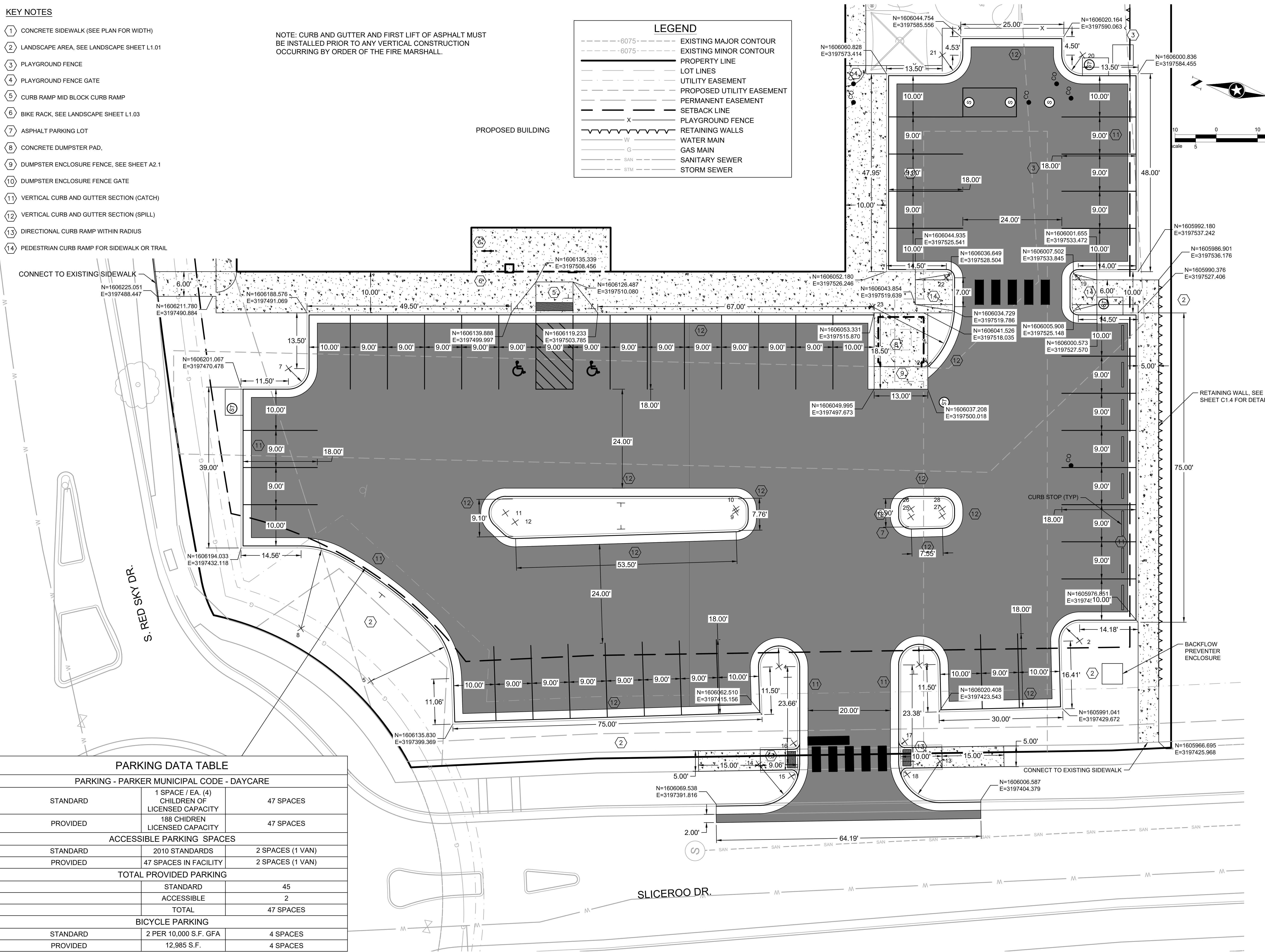
- 1 CONCRETE SIDEWALK (SEE PLAN FOR WIDTH)
- 2 LANDSCAPE AREA, SEE LANDSCAPE SHEET L1.01
- 3 PLAYGROUND FENCE
- 4 PLAYGROUND FENCE GATE
- 5 CURB RAMP MID BLOCK CURB RAMP
- 6 BIKE RACK, SEE LANDSCAPE SHEET L1.03
- 7 ASPHALT PARKING LOT
- 8 CONCRETE DUMPSTER PAD,
- 9 DUMPSTER ENCLOSURE FENCE, SEE SHEET A2.1
- 10 DUMPSTER ENCLOSURE FENCE GATE
- 11 VERTICAL CURB AND GUTTER SECTION (CATCH)
- 12 VERTICAL CURB AND GUTTER SECTION (SPILL)
- 13 DIRECTIONAL CURB RAMP WITHIN RADIUS
- 14 PEDESTRIAN CURB RAMP FOR SIDEWALK OR TRAIL

NOTE: CURB AND GUTTER AND FIRST LIFT OF ASPHALT MUST BE INSTALLED PRIOR TO ANY VERTICAL CONSTRUCTION OCCURRING BY ORDER OF THE FIRE MARSHALL.

LEGEND

- - - - -6075- EXISTING MAJOR CONTOUR
- - - - -6075- EXISTING MINOR CONTOUR
- PROPERTY LINE
- LOT LINES
- - - - - UTILITY EASEMENT
- - - - - PROPOSED UTILITY EASEMENT
- PERMANENT EASEMENT
- SETBACK LINE
- X X X X X PLAYGROUND FENCE
- ~~~~~ RETAINING WALLS
- W W W W W WATER MAIN
- G G G G G GAS MAIN
- SAN SAN SAN SAN SAN SANITARY SEWER
- STM STM STM STM STM STORM SEWER

PROPOSED BUILDING



Owner
New Horizon Academy
3405 Annapolis Lane
N., Suite 100
Plymouth, MN 55447
763.557.1111

Architect
Short Elliott Hendrickson, Inc.
2000 South Colorado Boulevard
Tower One, Suite 6000
Denver, Colorado 80222
720.540.6800

Landscape Architect
Short Elliott Hendrickson, Inc.
10501 Red Circle Drive
Suite 300
Minnetonka, MN 55343
952.912.2600

Civil Engineer
Short Elliott Hendrickson, Inc.
2000 South Colorado Boulevard
Tower One, Suite 6000
Denver, Colorado 80222
720.540.6800

Structural Engineer
Short Elliott Hendrickson, Inc.
3535 Vadnais Center Drive
St. Paul, MN 55110
651.490.2000

Mechanical Engineer
Short Elliott Hendrickson, Inc.
3535 Vadnais Center Drive
St. Paul, MN 55110
651.490.2000

Electrical Engineer
Short Elliott Hendrickson, Inc.
3535 Vadnais Center Drive
St. Paul, MN 55110
651.490.2000

NEW HORIZON ACADEMY - DOUGLAS 234 FILING, NO. 6
PARKER, CO

This drawing is an instrument of service and shall remain the property of Short Elliott Hendrickson, Inc. (SEH). This drawing and the concepts and ideas contained herein shall not be used, reproduced, revised, or retained without the express written approval of SEH.

Submission or distribution of this drawing to meet official or regulatory requirements or for other purposes in connection with the project is not to be construed as publication in derogation of any of the rights of SEH.

SEH Project Checked By Drawn By

NHOAC 156217 DRH AMP

Project Status: CONSTRUCTION SET
Issue Date: 6/25/2021

Rev. #	Description	Date

PARKING LOT SITE LAYOUT

PARKING DATA TABLE

PARKING - PARKER MUNICIPAL CODE - DAYCARE		
STANDARD	1 SPACE / EA. (4) CHILDREN OF LICENSED CAPACITY	47 SPACES
PROVIDED	188 CHIDREN LICENSED CAPACITY	47 SPACES
ACCESSIBLE PARKING SPACES		
STANDARD	2010 STANDARDS	2 SPACES (1 VAN)
PROVIDED	47 SPACES IN FACILITY	2 SPACES (1 VAN)
TOTAL PROVIDED PARKING		
	STANDARD	45
	ACCESSIBLE	2
	TOTAL	47 SPACES
BICYCLE PARKING		
STANDARD	2 PER 10,000 S.F. GFA	4 SPACES
PROVIDED	12,985 S.F.	4 SPACES

Save: 6/24/2021 11:07 PM apopp Plot: 6/25/2021 12:37 AM X:\KON\NHOAC\156217\5-final-dsgn\51-drawings\10-Civil\cad\dwg\sheet\Site Plans\C1_NHOAC156217_Site Plan.dwg

C1.3



Owner
New Horizon Academy
3405 Annapolis Lane
N., Suite 100
Plymouth, MN 55447
763.557.1111

Architect
Short Elliott Hendrickson, Inc.
2000 South Colorado Boulevard
Tower One, Suite 6000
Denver, Colorado 80222
720.540.6800

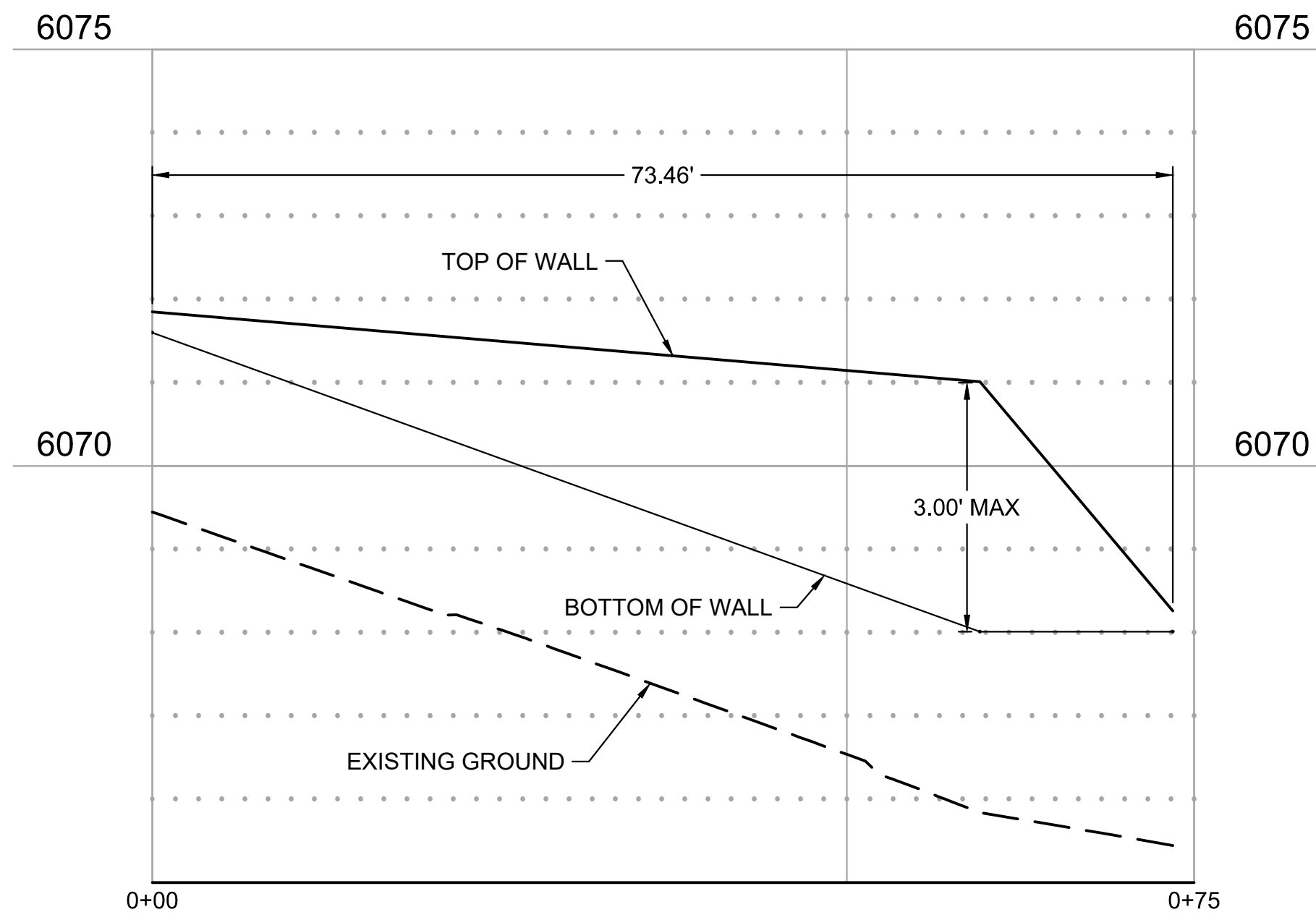
Landscape Architect
Short Elliott Hendrickson, Inc.
10901 Red Circle Drive
Suite 300
Minnetonka, MN 55343
952.912.2800

Civil Engineer
Short Elliott Hendrickson, Inc.
2000 South Colorado Boulevard
Tower One, Suite 6000
Denver, Colorado 80222
720.540.6800

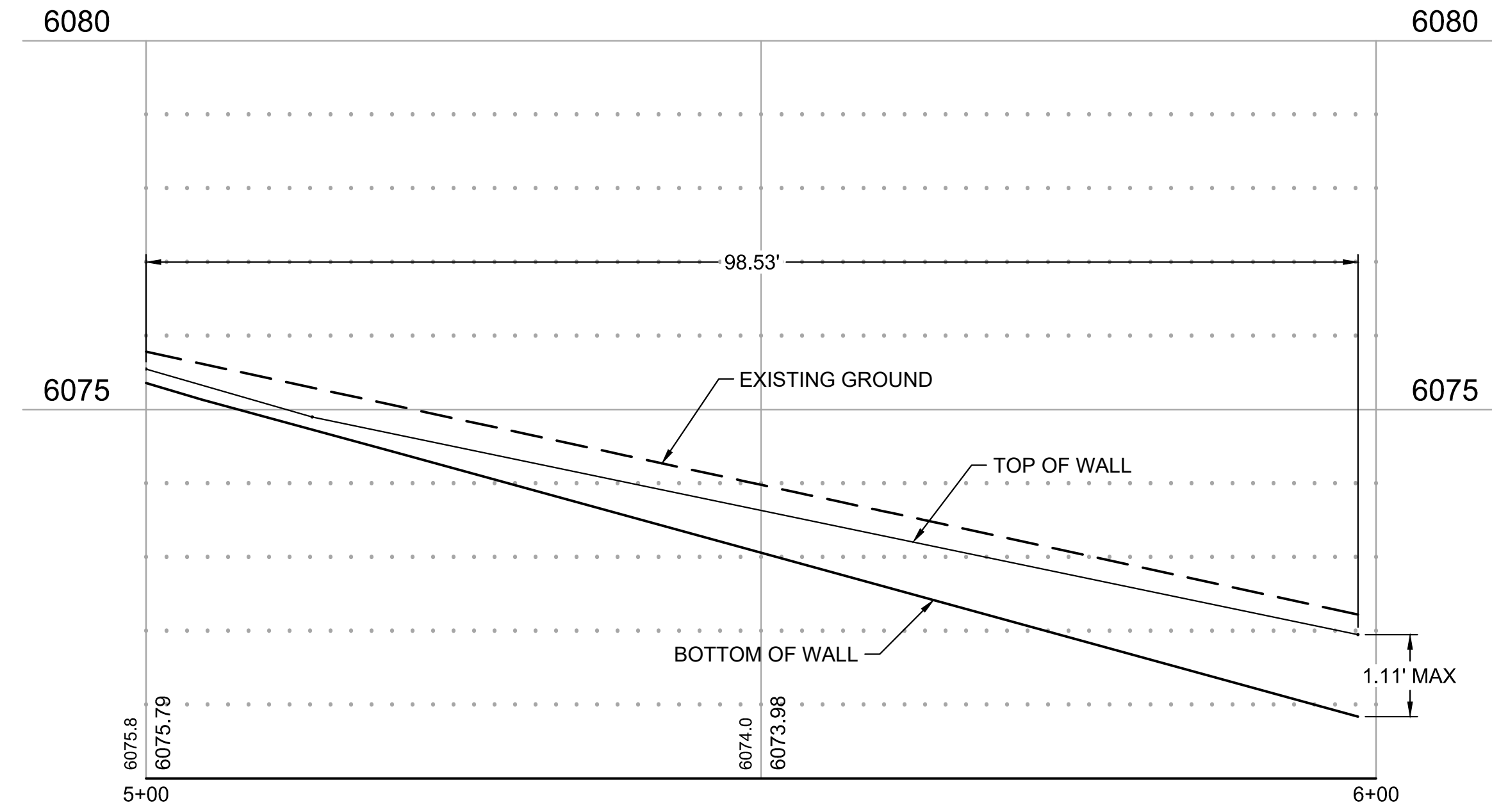
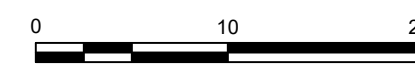
Structural Engineer
Short Elliott Hendrickson, Inc.
3535 Vadnais Center Drive
St. Paul, MN 55110
651.490.2000

Mechanical Engineer
Short Elliott Hendrickson, Inc.
3535 Vadnais Center Drive
St. Paul, MN 55110
651.490.2000

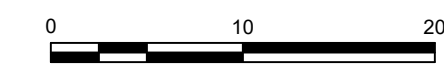
Electrical Engineer
Short Elliott Hendrickson, Inc.
3535 Vadnais Center Drive
St. Paul, MN 55110
651.490.2000



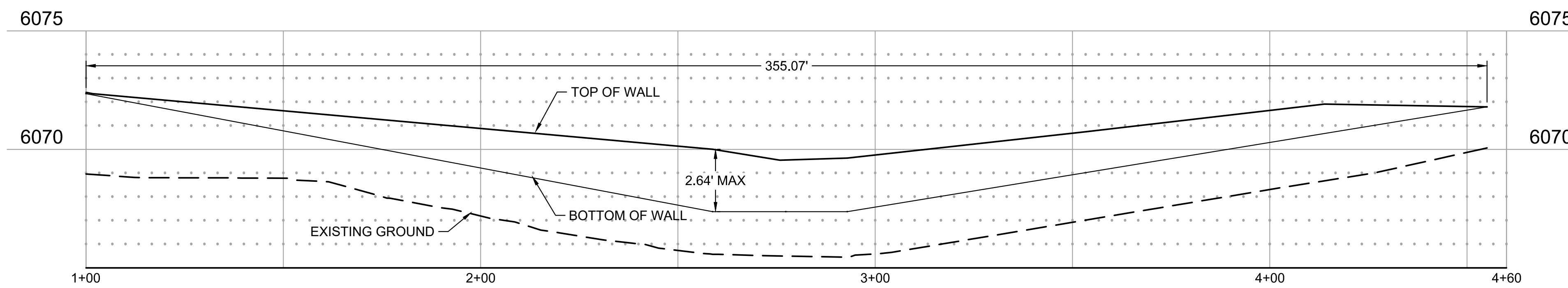
RETAINING WALL PROFILE
WALL ALONG NORTH SIDE OF BUILDING



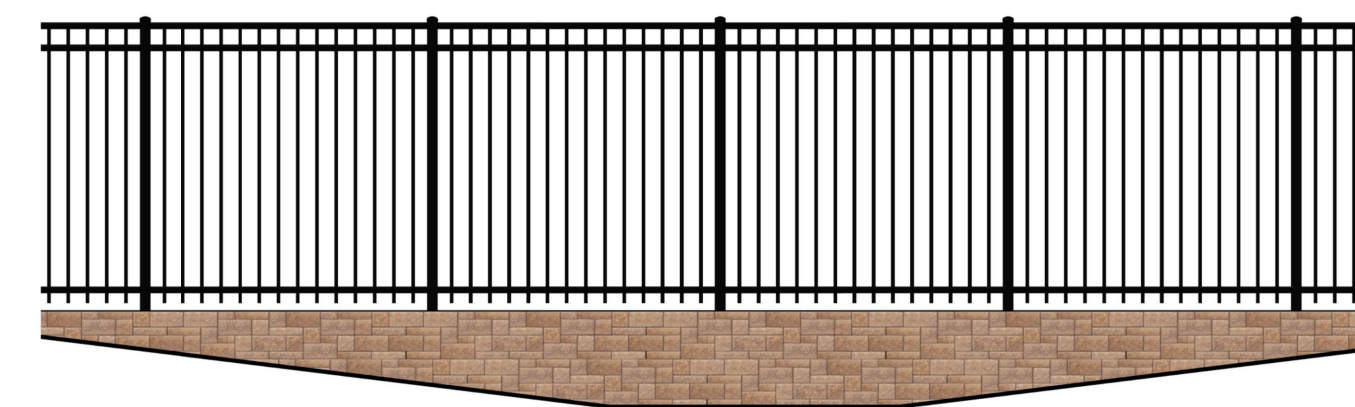
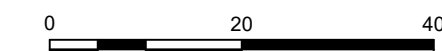
RETAINING WALL PROFILE
WALL ALONG SOUTH SIDE OF PARKING LOT



NOTE:
RETAINING WALL PROFILES ARE SHOWN FOR
REFERENCE ONLY. ELEVATIONS SHOULD BE
DETERMINED FROM PLAN SHEETS.



RETAINING WALL PROFILE
WALL ALONG PLAYGROUND FENCE



TYPICAL ELEVATION OF RETAINING
WALL WITH PLAYGROUND FENCE

This drawing is an instrument of service and shall remain the property of Short Elliott Hendrickson, Inc. (SEH). This drawing and the concepts and ideas contained herein shall not be used, reproduced, revised, or retained without the express written approval of SEH.

Substitution or distribution of this drawing to meet official or regulatory requirements or for other purposes in connection with the project is not to be construed as publication in derogation of any of the rights of SEH.

SEH Project: NHOC 156217
Checked By: DRH
Drawn By: AMP

Project Status: CONSTRUCTION SET
Issue Date: 6/25/2021

Copyright © 2021
Short Elliott Hendrickson, Inc.
All Rights Reserved

Rev. #	Description	Date



Owner
New Horizon Academy
3405 Annapolis Lane
N, Suite 100
Plymouth, MN 55447
763.557.1111

Architect
Short Elliott Hendrickson, Inc.
2000 South Colorado Boulevard
Tower One, Suite 6000
Denver, Colorado 80222
720.540.6800

Landscape Architect
Short Elliott Hendrickson, Inc.
10901 Red Circle Drive
Suite 300
Minnetonka, MN 55343
952.912.2600

Civil Engineer
Short Elliott Hendrickson, Inc.
2000 South Colorado Boulevard
Tower One, Suite 6000
Denver, Colorado 80222
720.540.6800

Structural Engineer
Short Elliott Hendrickson, Inc.
3535 Vadnais Center Drive
St. Paul, MN 55110
651.490.2000

Mechanical Engineer
Short Elliott Hendrickson, Inc.
3535 Vadnais Center Drive
St. Paul, MN 55110
651.490.2000

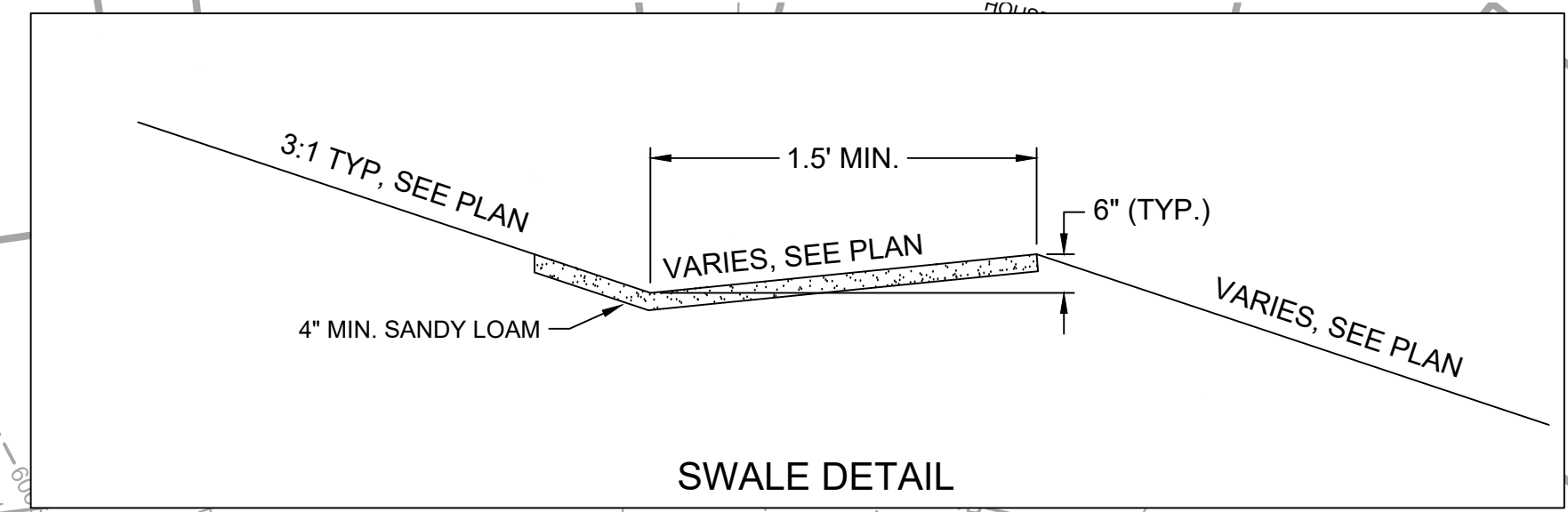
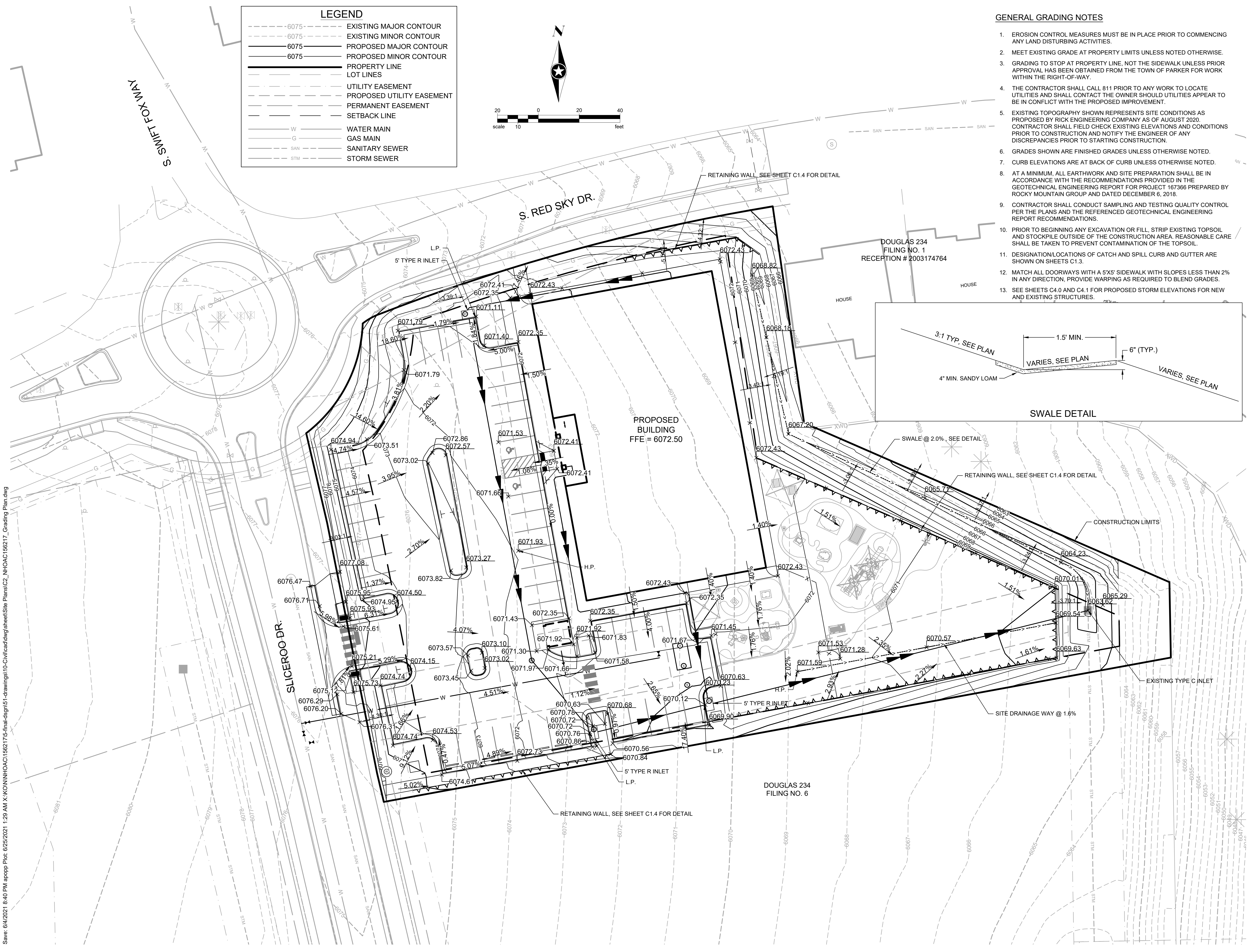
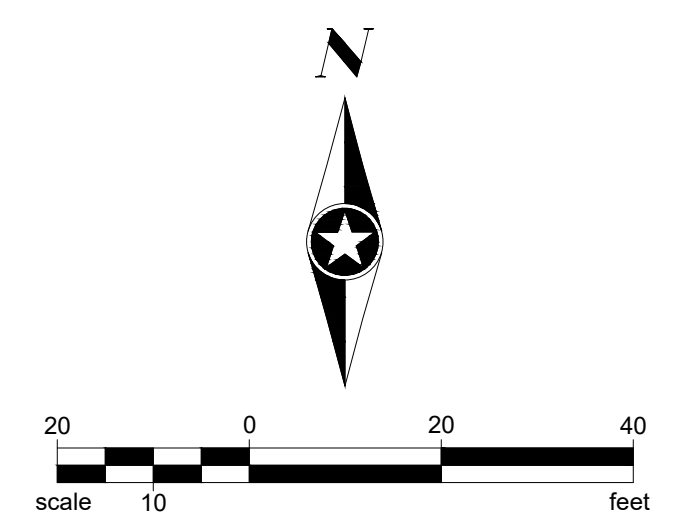
Electrical Engineer
Short Elliott Hendrickson, Inc.
3535 Vadnais Center Drive
St. Paul, MN 55110
651.490.2000

GENERAL GRADING NOTES

- EROSION CONTROL MEASURES MUST BE IN PLACE PRIOR TO COMMENCING ANY LAND DISTURBING ACTIVITIES.
- MEET EXISTING GRADE AT PROPERTY LIMITS UNLESS NOTED OTHERWISE.
- GRADING TO STOP AT PROPERTY LINE, NOT THE SIDEWALK UNLESS PRIOR APPROVAL HAS BEEN OBTAINED FROM THE TOWN OF PARKER FOR WORK WITHIN THE RIGHT-OF-WAY.
- THE CONTRACTOR SHALL CALL 811 PRIOR TO ANY WORK TO LOCATE UTILITIES AND SHALL CONTACT THE OWNER SHOULD UTILITIES APPEAR TO BE IN CONFLICT WITH THE PROPOSED IMPROVEMENT.
- EXISTING TOPOGRAPHY SHOWN REPRESENTS SITE CONDITIONS AS PROPOSED BY RICK ENGINEERING COMPANY AS OF AUGUST 2020. CONTRACTOR SHALL FIELD CHECK EXISTING ELEVATIONS AND CONDITIONS PRIOR TO CONSTRUCTION AND NOTIFY THE ENGINEER OF ANY DISCREPANCIES PRIOR TO STARTING CONSTRUCTION.
- GRADES SHOWN ARE FINISHED GRADES UNLESS OTHERWISE NOTED.
- CURB ELEVATIONS ARE AT BACK OF CURB UNLESS OTHERWISE NOTED.
- AT A MINIMUM, ALL EARTHWORK AND SITE PREPARATION SHALL BE IN ACCORDANCE WITH THE RECOMMENDATIONS PROVIDED IN THE GEOTECHNICAL ENGINEERING REPORT FOR PROJECT 167366 PREPARED BY ROCKY MOUNTAIN GROUP AND DATED DECEMBER 6, 2018.
- CONTRACTOR SHALL CONDUCT SAMPLING AND TESTING QUALITY CONTROL PER THE PLANS AND THE REFERENCED GEOTECHNICAL ENGINEERING REPORT RECOMMENDATIONS.
- PRIOR TO BEGINNING ANY EXCAVATION OR FILL, STRIP EXISTING TOPSOIL AND STOCKPILE OUTSIDE OF THE CONSTRUCTION AREA. REASONABLE CARE SHALL BE TAKEN TO PREVENT CONTAMINATION OF THE TOPSOIL.
- DESIGNATION/LOCATIONS OF CATCH AND SPILL CURB AND GUTTER ARE SHOWN ON SHEETS C1.3.
- MATCH ALL DOORWAYS WITH A 5X5' SIDEWALK WITH SLOPES LESS THAN 2% IN ANY DIRECTION. PROVIDE WARPING AS REQUIRED TO BLEND GRADES.
- SEE SHEETS C4.0 AND C4.1 FOR PROPOSED STORM ELEVATIONS FOR NEW AND EXISTING STRUCTURES.

LEGEND

---	6075	EXISTING MAJOR CONTOUR
---	6075	EXISTING MINOR CONTOUR
---	6075	PROPOSED MAJOR CONTOUR
---	6075	PROPOSED MINOR CONTOUR
---		PROPERTY LINE
---		LOT LINES
---		UTILITY EASEMENT
---		PROPOSED UTILITY EASEMENT
---		PERMANENT EASEMENT
---		SETBACK LINE
---	W	WATER MAIN
---	G	GAS MAIN
---	SAN	SANITARY SEWER
---	STM	STORM SEWER



Save: 6/4/2021 8:40 PM apopp Plot: 6/25/2021 1:28 AM X:\KON\NHOAC\156217\5-final-dgn\51-drawings\10-civil\cadd\dwg\sheet\Site Plans\C2_NHOAC\156217_Grading Plan.dwg

**NEW HORIZON ACADEMY -
DOUGLAS 234 FILING, NO. 6**

This drawing is an instrument of service and shall remain the property of Short Elliott Hendrickson, Inc. (SEH). This drawing and the concepts and ideas contained herein shall not be used, reproduced, revised, or retained without the express written approval of SEH.

Submission or distribution of this drawing to meet official or regulatory requirements or for other purposes in connection with the project is not to be construed as publication in derogation of any of the rights of SEH.

SEH Project
Checked By
Drawn By

NHOAC 156217
DRH
AMP

Project Status
CONSTRUCTION SET

Issue Date
6/25/2021

Revision Issue		
Rev. #	Description	Date

GRADING PLAN

C2.0



Building a Better World for All of Us®



Owner
 New Horizon Academy
 3405 Annapolis Lane
 N., Suite 100
 Plymouth, MN 55447
 763.557.1111

Architect
 Short Elliott Hendrickson, Inc.
 2000 South Colorado Boulevard
 Tower One, Suite 6000
 Denver, Colorado 80222
 720.540.6800

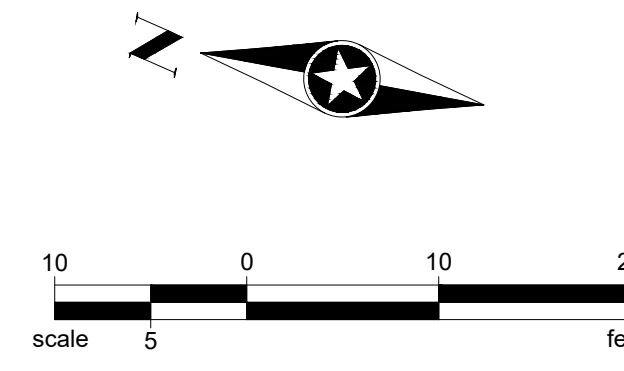
Landscape Architect
 Short Elliott Hendrickson, Inc.
 10501 Red Circle Drive
 Suite 300
 Minnetonka, MN 55343
 952.912.2600

Civil Engineer
 Short Elliott Hendrickson, Inc.
 2000 South Colorado Boulevard
 Tower One, Suite 6000
 Denver, Colorado 80222
 720.540.6800

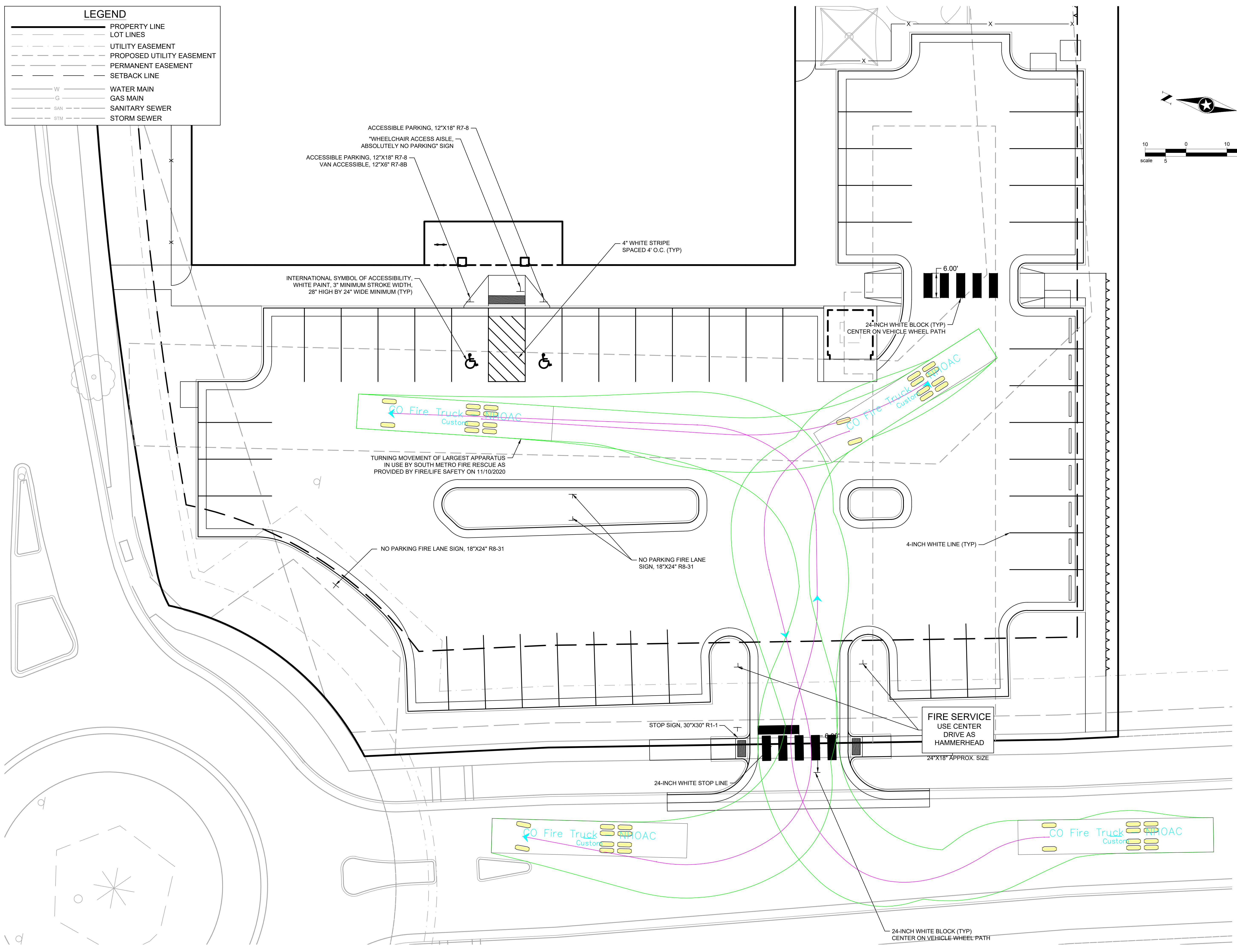
Structural Engineer
 Short Elliott Hendrickson, Inc.
 3535 Vadnais Center Drive
 St. Paul, MN 55110
 651.490.2000

Mechanical Engineer
 Short Elliott Hendrickson, Inc.
 3535 Vadnais Center Drive
 St. Paul, MN 55110
 651.490.2000

Electrical Engineer
 Short Elliott Hendrickson, Inc.
 3535 Vadnais Center Drive
 St. Paul, MN 55110
 651.490.2000



LEGEND	
	PROPERTY LINE
	LOT LINES
	UTILITY EASEMENT
	PROPOSED UTILITY EASEMENT
	PERMANENT EASEMENT
	SETBACK LINE
	WATER MAIN
	GAS MAIN
	SANITARY SEWER
	STORM SEWER



Save: 6/4/2021 4:50 PM apopp Plot: 6/25/2021 3:08 AM X:\KON\NH\HOC\156217\5-fina-dsgn\51-drawings\10-civil\cdwg\sheet\Site Plans\C5_NHOC\156217_Signage Plan.dwg

NEW HORIZON ACADEMY - DOUGLAS 234 FILING, NO. 6
 PARKER, CO

This drawing is an instrument of service and shall remain the property of Short Elliott Hendrickson, Inc. (SEH). This drawing and the concepts and ideas contained herein shall not be used, reproduced, revised, or retained without the express written approval of SEH.

Substitution or distribution of this drawing to meet official or regulatory requirements or for other purposes in connection with the project is not to be construed as publication in derogation of any of the rights of SEH.

COPYRIGHT © 2021
 Short Elliott Hendrickson, Inc.
 All Rights Reserved

SEH Project: NHOC 156217
 Checked By: DRH
 Drawn By: AMP

Project Status: CONSTRUCTION SET
 Issue Date: 6/25/2021

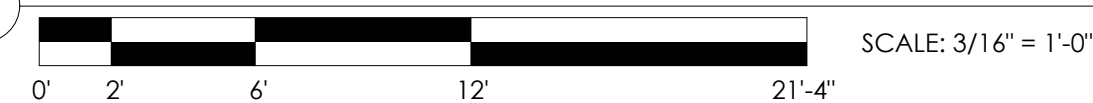
Revision Issue		
Rev. #	Description	Date

SIGNAGE PLAN

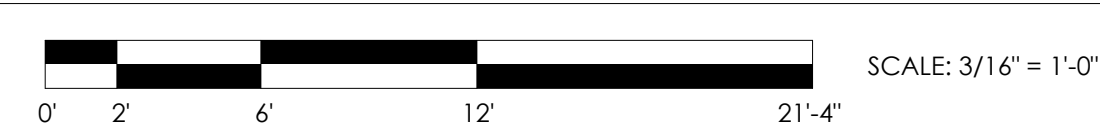
C5.0



1 WEST ELEVATION



2 NORTH ELEVATION

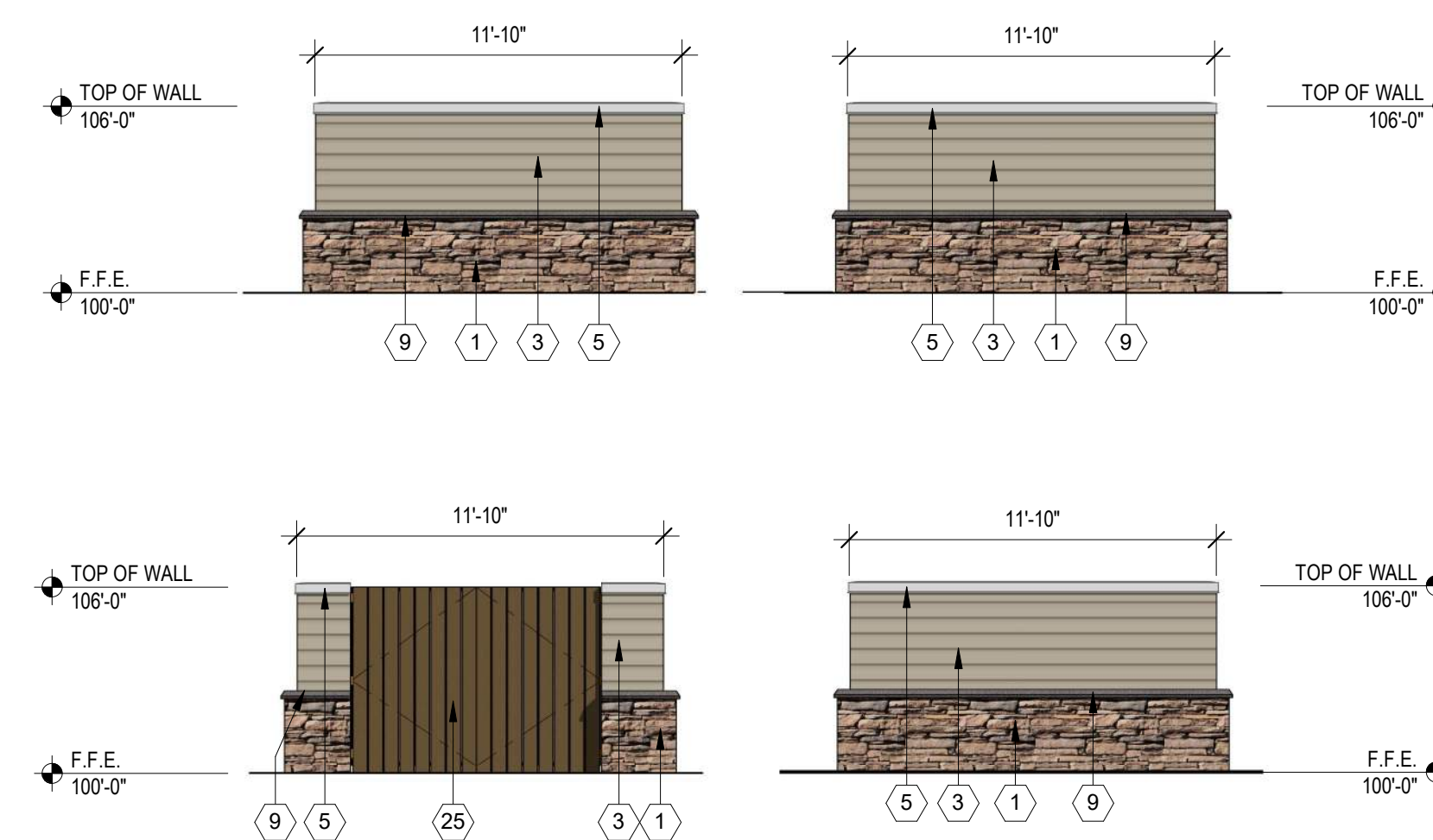


3 NORTH ENTRY ELEVATION

3/16" = 1'-0"

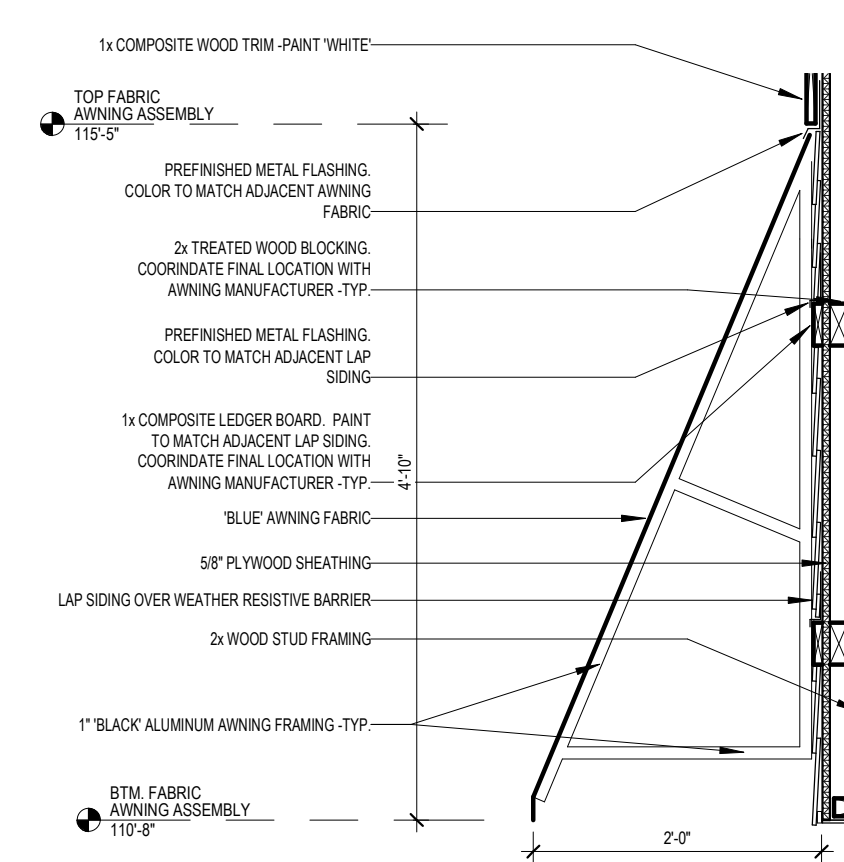
4 SOUTH ENTRY ELEVATION

3/16" = 1'-0"



5 TRASH ENCLOSURE

3/16" = 1'-0"



6 FABRIC AWNING DETAIL

3/4" = 1'-0"

ELEVATION KEY NOTES (#)

1. STONE - SOUTHERN LEDGESTONE 'CHARDONNAY' BY CULTURED STONE
2. FIBER CEMENT SHAKE SIDING - HARDIESHINGLE - STRAIGHT EDGE PANEL 'COBBLESTONE' BY JAMES HARDIE
3. FIBER CEMENT HORIZONTAL SIDING - HARDIEPLANK - SMOOTH - 'COBBLESTONE' BY JAMES HARDIE
4. FIBER CEMENT BOARD AND BATTEN SIDING - HARDIEPANEL VERTICAL SIDING - SMOOTH - 'COBBLESTONE' WITH HARDIETRIM BOARD - SMOOTH BATTEN BOARD - 'COBBLESTONE' BY JAMES HARDIE
5. PREFINISHED METAL COPING - 'WHITE'
6. ALUMINUM STOREFRONT FRAMING / GLAZING ASSEMBLY - INSULATED LOW-E GLASS WITH 'DARK BRONZE' ANODIZED ALUMINUM FRAMES
7. ALUMINUM DOOR / TRANSOM / GLAZING ASSEMBLY - INSULATED LOW-E GLASS WITH 'DARK BRONZE' ANODIZED ALUMINUM FRAMES
8. HOLLOW METAL DOOR AND FRAME - PAINT TO MATCH 'DARK BRONZE'
9. ARCHITECTURAL PRECAST CONCRETE SILL
10. 14'-3" x 3'-7" EXTERIOR LED 'NEW HORIZON ACADEMY' AND 'SUN' SIGNAGE. SEE ELECTRICAL DRAWINGS FOR FURTHER INFORMATION.
11. EIFS CORNICE - PAINT 'WHITE'
12. PREFINISHED METAL SCUPPER AND 4"x6" DOWNSPOUT - 'DARK BRONZE'. CONNECT DOWNSPOUT TO UNDERGROUND STORM SEWER. SEE CIVIL DRAWINGS FOR FURTHER INFORMATION.
13. LED LIGHT FIXTURE. SEE ELECTRICAL DRAWINGS FOR FURTHER INFORMATION
14. 1x FIBER CEMENT TRIM - PAINT 'WHITE'
15. 'BLUE' FABRIC AWNING.
16. DASHED LINE DENOTES TOP OF ROOF BEYOND
17. EIFS DENTIL MOLDING - PAINT 'WHITE'
18. ARCHITECTURAL PRECAST CONCRETE COLUMN CAP
19. 8x8 WOOD COLUMN, STAINED. SEE STRUCTURAL FOR FURTHER INFORMATION
20. 4x12 WOOD BEAM, STAINED.
21. 12" FIBER CEMENT TRIM - PAINT "BLUE"
22. WALL MOUNTED CT CABINET - PAINT TO MATCH ADJACENT FINISH
23. ELECTRICAL METER - PAINT TO MATCH ADJACENT FINISH
24. 1'-0" HIGH x 2'-0" WIDE SCUPPER OPENING
25. WOODEN TRASH ENCLOSURE GATE AND POST ASSEMBLY
26. ROOFTOP SCREENING BEYOND - SEE ROOF PLAN AND 8/A 305
27. FIRE DEPARTMENT LOCK BOX. MODEL R3-RECESSED BY THE DAMA COMPANY. VERIFY LOCATION WITH LOCAL FIRE OFFICIAL

Owner
New Horizon Academy
3405 Annapolis Lane N.
Suite 100
Plymouth, Minnesota 55447
763.557.1111

Architect
Short Elliott Hendrickson, Inc.
2000 S. Colorado Blvd., Suite 6000
Denver, Colorado 80222
720.540.6800

Landscape Architect
Short Elliott Hendrickson, Inc.
3535 Vadnais Center Drive
Suite 300
Minnetonka, Minnesota 55343
952.912.2600

Civil Engineer
Short Elliott Hendrickson, Inc.
2000 S. Colorado Blvd., Suite 6000
Denver, Colorado 80222
720.540.6800

Structural Engineer
Short Elliott Hendrickson, Inc.
2000 S. Colorado Blvd.
Suite 6000
Denver, CO 80222
303.586.5830

Mechanical Engineer
Short Elliott Hendrickson, Inc.
3535 Vadnais Center Drive
St. Paul, Minnesota 55110
651.318.0362

Electrical Engineer
Short Elliott Hendrickson, Inc.
3535 Vadnais Center Drive
St. Paul, Minnesota 55110
651.490.2166

NEW HORIZON ACADEMY -
DOUGLAS 234 FILING, NO. 6
PARKER, CO

This drawing is an instrument of service and shall remain the property of Short Elliott Hendrickson, Inc. (SEH). This drawing and the concepts and ideas contained herein shall not be used, reproduced, revised, or retained without the express written approval of SEH.

Submission or distribution of this drawing for use in connection with the project is not to be construed as publication in derogation of any of the rights of SEH.

SEH Project Checked By Drawn By
NHAC 156217 SB DRS

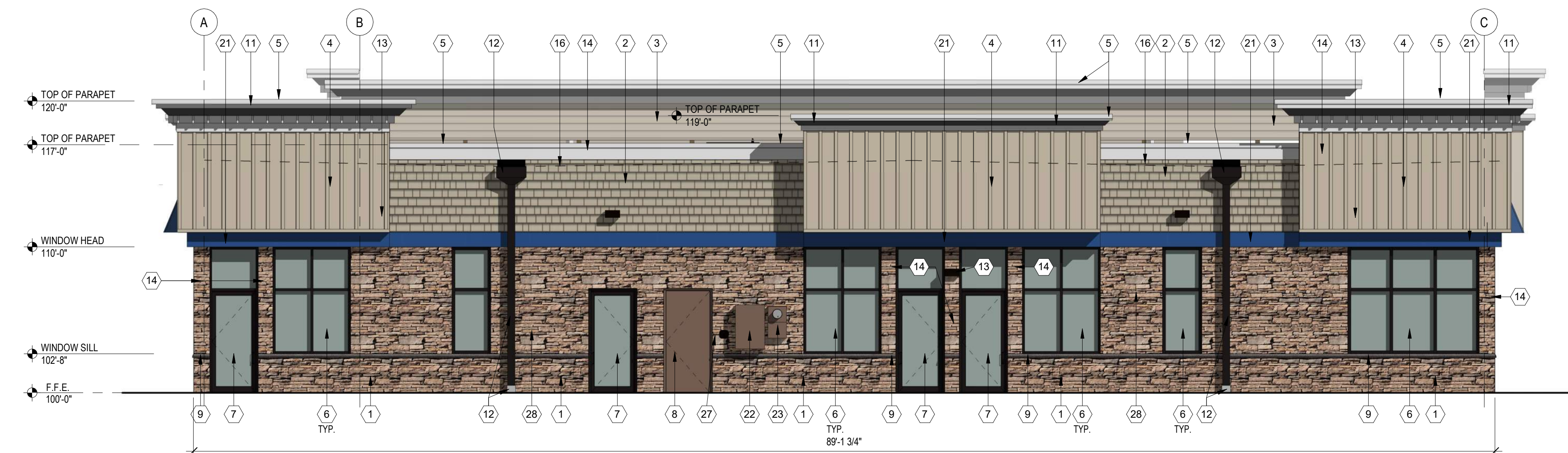
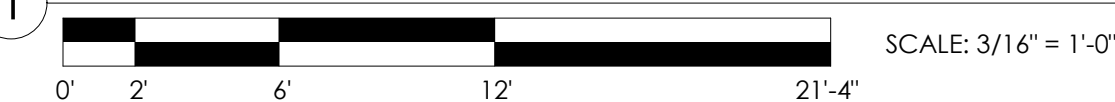
Project Status Issue Date
CONSTRUCTION SET 6/25/2021

Revision Issue
Rev. # Description Date

PRELIMINARY EXTERIOR ELEVATIONS



1 EAST ELEVATION



2 SOUTH ELEVATION



EXTERIOR FINISH SCHEDULE

MATERIAL	PRODUCT
STONE VENEER	SOUTHERN LEDGESTONE, 'CHARDONNAY', BY CULTURED STONE
FIBER CEMENT SHAKE SIDING	HARDIESHINGLE, STRAIGHT EDGE PANEL, 'COBBLESTONE', BY JAMES HARDIE
FIBER CEMENT HORIZONTAL SIDING	HARDIEPLANK, SMOOTH, 'COBBLESTONE', BY JAMES HARDIE
FIBER CEMENT BOARD AND BATTEN SIDING	HARDIEPANEL VERTICAL SIDING, SMOOTH, 'COBBLESTONE', WITH HARDIETRIM BOARD, SMOOTH BATTEN BOARD, 'COBBLESTONE' BY JAMES HARDIE
COMPOSITE WOOD TRIM	PAINT 'BLUE'
COMPOSITE WOOD TRIM	PAINT TO MATCH 'ARTIC WHITE' BY JAMES HARDIE
ARCHITECTURAL PRECAST CONCRETE	INDIANA LNESTONE
ALUMINUM STOREFRONT FRAMING	'DARK BRONZE' ANODIZED
FABRIC AWNING	'BLUE' BY SUNBRELLA

FACADE TRANSPARENCY SCHEDULE

FACADE	TOTAL S.F. OF FACADE	TRANSPARENCY REQUIRED	TRANSPARENCY PROVIDED
NORTH ELEVATION (BUILDING FRONT LESS THAN 100' IN LENGTH)	704 S.F.	40% (282 S.F.)	60% (423 S.F.)
SOUTH ELEVATION (BUILDING REAR LESS THAN 100' IN LENGTH)	712 S.F.	25% (178 S.F.)	44% (311 S.F.)
EAST ELEVATION (BUILDING SIDE MORE THAN 100' IN LENGTH)	1,178 S.F.	25% (295 S.F.)	50% (587 S.F.)
WEST ELEVATION (BUILDING FRONT MORE THAN 100' IN LENGTH)	1,179 S.F.	30% (354 S.F.)	58% (689 S.F.)

ELEVATION KEY NOTES (#)

- STONE - SOUTHERN LEDGESTONE 'CHARDONNAY' BY CULTURED STONE
- FIBER CEMENT SHAKE SIDING - HARDIESHINGLE - STRAIGHT EDGE PANEL 'COBBLESTONE' BY JAMES HARDIE
- FIBER CEMENT HORIZONTAL SIDING - HARDIEPLANK - SMOOTH - 'COBBLESTONE' BY JAMES HARDIE
- FIBER CEMENT BOARD AND BATTEN SIDING - HARDIEPANEL VERTICAL SIDING - SMOOTH - 'COBBLESTONE' WITH HARDIETRIM BOARD - SMOOTH BATTEN BOARD - 'COBBLESTONE' BY JAMES HARDIE
- PREFINISHED METAL COPING - 'WHITE'
- ALUMINUM STOREFRONT FRAMING / GLAZING ASSEMBLY - INSULATED LOW-E GLASS WITH 'DARK BRONZE' ANODIZED ALUMINUM FRAMES
- ALUMINUM DOOR / TRANSOM / GLAZING ASSEMBLY - INSULATED LOW-E GLASS WITH 'DARK BRONZE' ANODIZED ALUMINUM FRAMES
- HOLLOW METAL DOOR AND FRAME - PAINT TO MATCH 'DARK BRONZE'
- ARCHITECTURAL PRECAST CONCRETE SILL
- 14'-3" x 3'-7" EXTERIOR LED 'NEW HORIZON ACADEMY' AND 'SUN' SIGNAGE. SEE ELECTRICAL DRAWINGS FOR FURTHER INFORMATION.
- EIFS CORNICE - PAINT 'WHITE'
- PREFINISHED METAL SCUPPER AND 4"x6" DOWNSPOUT - 'DARK BRONZE'. CONNECT DOWNSPOUT TO UNDERGROUND STORM SEWER. SEE CIVIL DRAWINGS FOR FURTHER INFORMATION.
- LED LIGHT FIXTURE. SEE ELECTRICAL DRAWINGS FOR FURTHER INFORMATION.
- 1x FIBER CEMENT TRIM - PAINT 'WHITE'
- 'BLUE' FABRIC AWNING.
- DASHED LINE DENOTES TOP OF ROOF BEYOND
- EIFS DENTIL MOLDING - PAINT 'WHITE'
- ARCHITECTURAL PRECAST CONCRETE COLUMN CAP
- 8x8 WOOD COLUMN, STAINED. SEE STRUCTURAL FOR FURTHER INFORMATION
- 4x12 WOOD BEAM, STAINED.
- 12" FIBER CEMENT TRIM - PAINT 'BLUE'
- WALL MOUNTED CT CABINET - PAINT TO MATCH ADJACENT FINISH
- ELECTRICAL METER - PAINT TO MATCH ADJACENT FINISH
- 1'-0" HIGH x 2'-0" WIDE SCUPPER OPENING
- WOODEN TRASH ENCLOSURE GATE AND POST ASSEMBLY
- ROOFTOP SCREENING BEYOND - SEE ROOF PLAN AND 8/A 305
- FIRE DEPARTMENT LOCK BOX - MODEL R3-RECESSED BY THE DAMA COMPANY. VERIFY LOCATION WITH LOCAL FIRE OFFICIAL

Owner
New Horizon Academy
3405 Annapolis Lane N.
Suite 100
Plymouth, Minnesota 55447
763.557.1111

Architect
Short Elliott Hendrickson, Inc.
2000 S. Colorado Blvd., Suite 6000
Denver, Colorado 80222
720.540.6800

Landscape Architect
Short Elliott Hendrickson, Inc.
3535 Vadnais Center Drive
Suite 300
Minnetonka, Minnesota 55343
952.912.2600

Civil Engineer
Short Elliott Hendrickson, Inc.
2000 S. Colorado Blvd., Suite 6000
Denver, Colorado 80222
720.540.6800

Structural Engineer
Short Elliott Hendrickson, Inc.
2000 S. Colorado Blvd.
Suite 6000
Denver, CO 80222
303.586.5830

Mechanical Engineer
Short Elliott Hendrickson, Inc.
3535 Vadnais Center Drive
St. Paul, Minnesota 55110
651.318.0362

Electrical Engineer
Short Elliott Hendrickson, Inc.
3535 Vadnais Center Drive
St. Paul, Minnesota 55110
651.490.2166

NEW HORIZON ACADEMY -
DOUGLAS 234 FILING, NO. 6
PARKER, CO

This drawing is an instrument of service and shall remain the property of Short Elliott Hendrickson, Inc. (SEH). This drawing and the concepts and ideas contained herein shall not be used, reproduced, revised, or retained without the express written approval of SEH.

Submission or distribution of this drawing for use in connection with the project is not to be construed as publication or derogation of any of the rights of SEH.

SEH Project: NHAC 156217
Checked By: SB
Drawn By: DRS

Project Status: CONSTRUCTION SET
Issue Date: 6/25/2021

Revision Issue

Rev. # Description Date

PRELIMINARY EXTERIOR ELEVATIONS



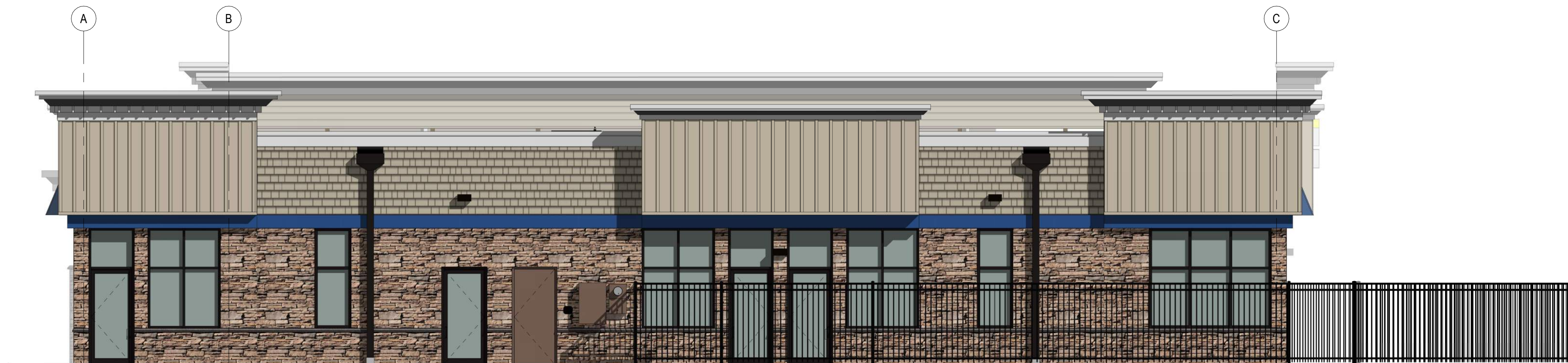
1 WEST ELEVATION
3/16" = 1'-0"



2 NORTH ELEVATION
3/16" = 1'-0"



3 EAST ELEVATION
3/16" = 1'-0"



4 SOUTH ELEVATION
3/16" = 1'-0"

Owner
New Horizon Academy
3405 Annapolis Lane N.
Suite 100
Plymouth, Minnesota 55447
763.567.1111

Architect
Short Elliott Hendrickson, Inc.
2000 S. Colorado Blvd., Suite 6000
Denver, Colorado 80222
720.540.6800

Landscape Architect
Short Elliott Hendrickson, Inc.
3535 Vadnais Center Drive
Suite 300
Minnetonka, Minnesota 55343
952.912.2600

Civil Engineer
Short Elliott Hendrickson, Inc.
2000 S. Colorado Blvd., Suite 6000
Denver, Colorado 80222
720.540.6800

Structural Engineer
Short Elliott Hendrickson, Inc.
2000 S. Colorado Blvd.
Suite 6000
Denver, CO 80222
303.586.5830

Mechanical Engineer
Short Elliott Hendrickson, Inc.
3535 Vadnais Center Drive
St. Paul, Minnesota 55110
651.318.0362

Electrical Engineer
Short Elliott Hendrickson, Inc.
3535 Vadnais Center Drive
St. Paul, Minnesota 55110
651.490.2166

NEW HORIZON ACADEMY -
DOUGLAS 234 FILING, NO. 6
PARKER, CO

This drawing is an instrument of service and shall remain the property of Short Elliott Hendrickson, Inc. (SEH). This drawing and the concepts and ideas contained herein shall not be used, reproduced, revised, or retained without the express written approval of SEH.

Submission or distribution of this drawing for use for other purposes in connection with the project is not to be construed as publication in derogation of any of the rights of SEH.

Copyright © 2021
Short Elliott Hendrickson, Inc.
All Rights Reserved.

SEH Project NHOC 156217
Checked By SB
Drawn By DRS

Project Status CONSTRUCTION SET
Issue Date 6/25/2021

Rev. #	Description	Date

PRELIMINARY ELEVATIONS



1 NORTHWEST PERSPECTIVE



2 NORTHEAST PERSPECTIVE

Owner
New Horizon Academy
3405 Annapolis Lane N.
Suite 100
Plymouth, Minnesota 55447
763.567.1111

Architect
Short Elliott Hendrickson, Inc.
2000 S. Colorado Blvd., Suite 6000
Denver, Colorado 80222
720.540.6800

Landscape Architect
Short Elliott Hendrickson, Inc.
3535 Vadnais Center Drive
Suite 300
Minnetonka, Minnesota 55343
952.912.2600

Civil Engineer
Short Elliott Hendrickson, Inc.
2000 S. Colorado Blvd., Suite 6000
Denver, Colorado 80222
720.540.6800

Structural Engineer
Short Elliott Hendrickson, Inc.
2000 S. Colorado Blvd.
Suite 6000
Denver, CO 80222
303.586.5830

Mechanical Engineer
Short Elliott Hendrickson, Inc.
3535 Vadnais Center Drive
St. Paul, Minnesota 55110
651.318.0362

Electrical Engineer
Short Elliott Hendrickson, Inc.
3535 Vadnais Center Drive
St. Paul, Minnesota 55110
651.490.2166

New Horizon Academy
**NEW HORIZON ACADEMY -
DOUGLAS 234 FILING, NO. 6**
 PARKER, CO

This drawing is an instrument of service and shall remain the property of Short Elliott Hendrickson, Inc. (SEH). This drawing and the concepts and ideas contained herein shall not be used, reproduced, revised, or retained without the express written approval of SEH.

Submission or distribution of this drawing to meet official or regulatory requirements or for other purposes in connection with the project to not be construed as publication in derogation of any of the rights of SEH.

COPYRIGHT © 2021
 Short Elliott Hendrickson, Inc.
 All Rights Reserved

SEH Project: NHOAC 156217
 Checked By: SB
 Drawn By: DRS

Project Status: CONSTRUCTION SET
 Issue Date: 6/25/2021

Revision Issue		
Rev. #	Description	Date

PERSPECTIVES



1 SOUTHWEST PERSPECTIVE



2 SOUTHEAST PERSPECTIVE

Owner
New Horizon Academy
3405 Annapolis Lane N.
Suite 100
Plymouth, Minnesota 55447
763.567.1111

Architect
Short Elliott Hendrickson, Inc.
2000 S. Colorado Blvd., Suite 6000
Denver, Colorado 80222
720.540.6800

Landscape Architect
Short Elliott Hendrickson, Inc.
3535 Vadnais Center Drive
Suite 300
Minnetonka, Minnesota 55343
952.912.2600

Civil Engineer
Short Elliott Hendrickson, Inc.
2000 S. Colorado Blvd., Suite 6000
Denver, Colorado 80222
720.540.6800

Structural Engineer
Short Elliott Hendrickson, Inc.
2000 S. Colorado Blvd.
Suite 6000
Denver, CO 80222
303.586.5830

Mechanical Engineer
Short Elliott Hendrickson, Inc.
3535 Vadnais Center Drive
St. Paul, Minnesota 55110
651.318.0362

Electrical Engineer
Short Elliott Hendrickson, Inc.
3535 Vadnais Center Drive
St. Paul, Minnesota 55110
651.490.2166

NEW HORIZON ACADEMY -
DOUGLAS 234 FILING, NO. 6
PARKER, CO

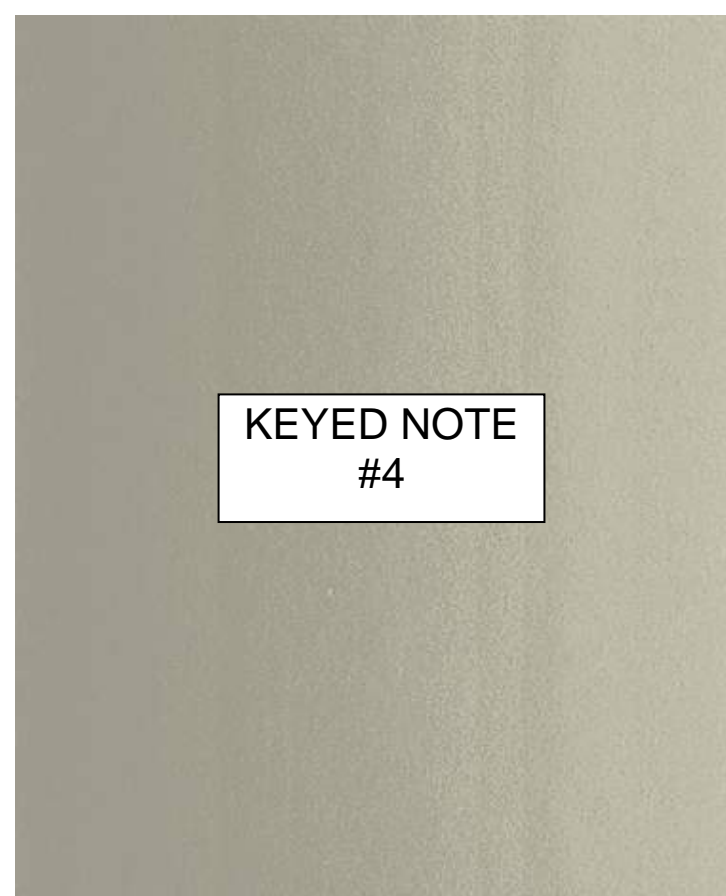
This drawing is an instrument of service and shall remain the property of Short Elliott Hendrickson, Inc. (SEH). This drawing and the concepts and ideas contained herein shall not be used, reproduced, revised, or retained without the express written approval of SEH.

Submission or distribution of this drawing to meet official or regulatory requirements or for other purposes in connection with the project is not to be construed as publication in derogation of any of the rights of SEH.

SEH Project: NHAC 156217
Checked By: SB
Drawn By: DRS

Project Status: CONSTRUCTION SET
Issue Date: 6/25/2021

Revision Issue		
Rev. #	Description	Date



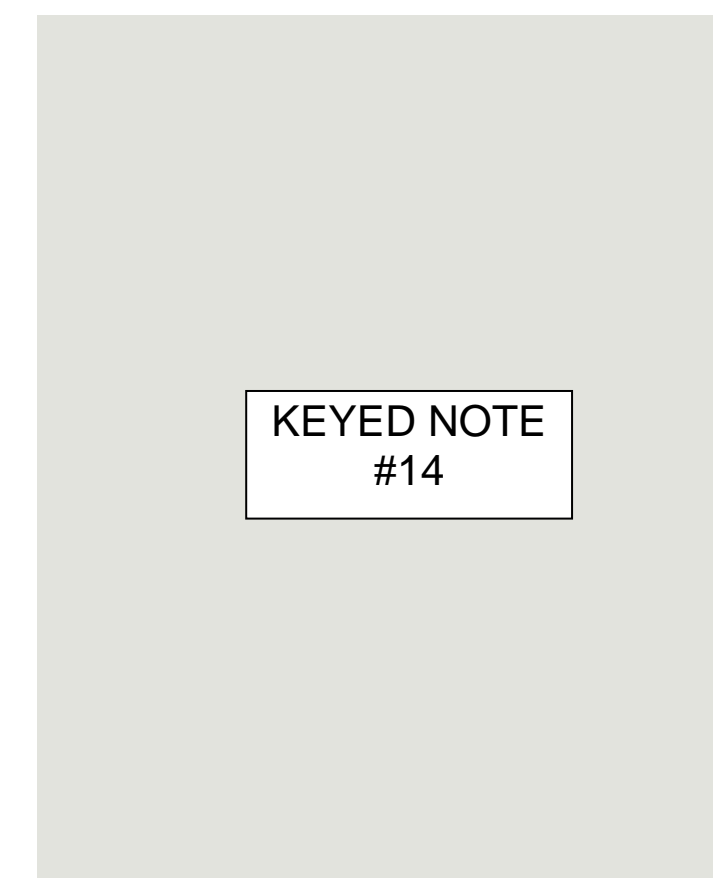
FIBER CEMENT BOARD AND BATTEN SIDING -
HARDIEPANEL VERTICAL SIDING - SMOOTH -
'COBBLESTONE' WITH HARDIETRIM BOARD -
SMOOTH BATTEN BOARD - 'COBBLESTONE' BY
JAMES HARDIE



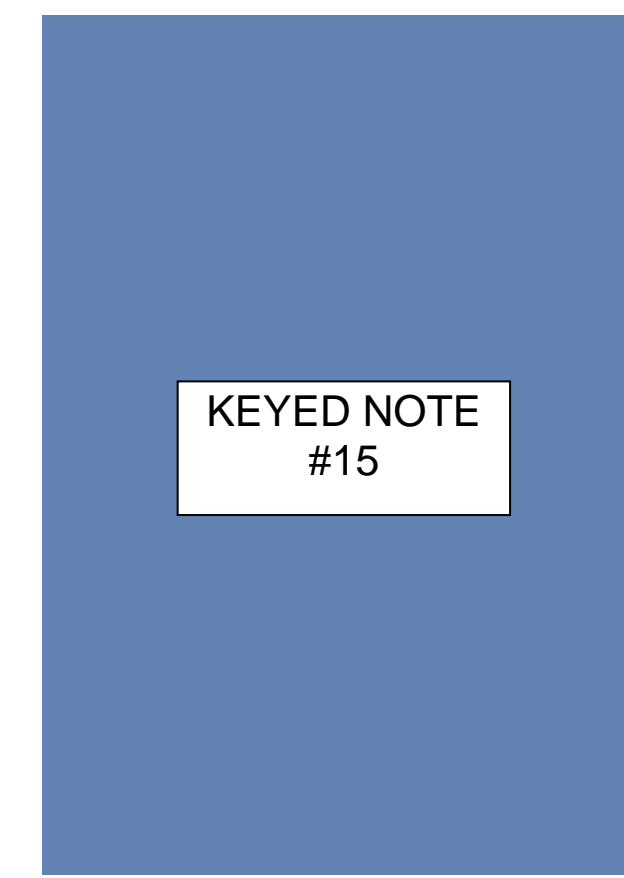
FIBER CEMENT SHAKE SIDING -
HARDIESHINGLE - STRAIGHT EDGE PANEL
'COBBLESTONE' BY JAMES HARDIE



FIBER CEMENT HORIZONTAL SIDING -
HARDIEPLANK - SMOOTH - 'COBBLESTONE'
BY JAMES HARDIE



COMPOSITE WOOD TRIM - PAINTED TO
MATCH 'ARCTIC WHITE' BY JAMES HARDIE



'BLUE' FABRIC AWNING



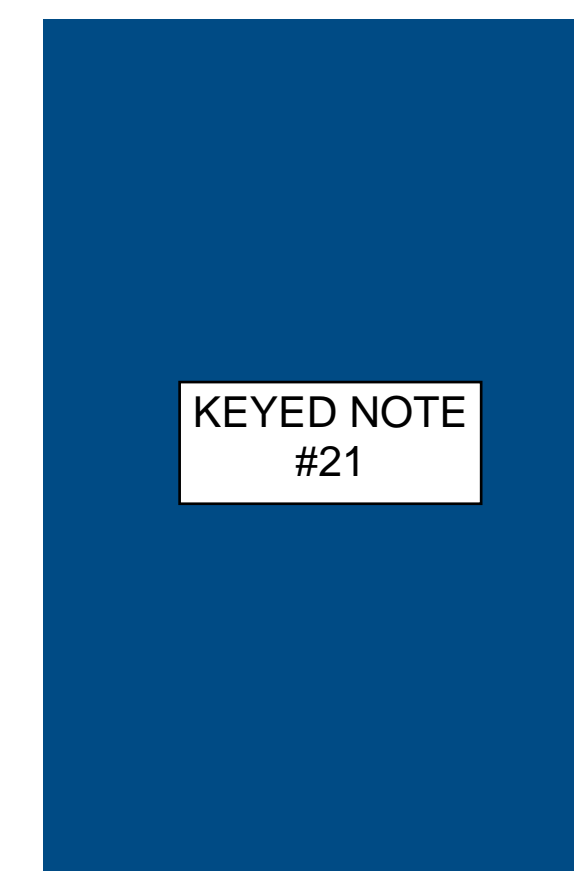
ARCHITECTURAL PRECAST CONCRETE -
INDIANA LIMESTONE



STONE VENEER - SOUTHER LEDGESTONE
'CHARDONNAY' BY CULTURED STONE



ALUMINUM STOREFRONT FRAMING -
'DARK BRONZE' ANODIZED



COMPOSITE WOOD TRIM (LIMITED
LOCATIONS) - PAINT 'BLUE'

Owner
New Horizon Academy
3405 Annapolis Lane N.
Suite 100
Plymouth, Minnesota 55447
763.557.1111

Architect
Short Elliott Hendrickson, Inc.
2000 S. Colorado Blvd., Suite 6000
Denver, Colorado 80222
720.540.6800

Landscape Architect
Short Elliott Hendrickson, Inc.
3535 Vadnais Center Drive
Suite 300
Minnetonka, Minnesota 55343
952.912.2600

Civil Engineer
Short Elliott Hendrickson, Inc.
2000 S. Colorado Blvd., Suite 6000
Denver, Colorado 80222
720.540.6800

Structural Engineer
Short Elliott Hendrickson, Inc.
2000 S. Colorado Blvd.
Suite 6000
Denver, CO 80222
303.586.5830

Mechanical Engineer
Short Elliott Hendrickson, Inc.
3535 Vadnais Center Drive
St. Paul, Minnesota 55110
651.318.0362

Electrical Engineer
Short Elliott Hendrickson, Inc.
3535 Vadnais Center Drive
St. Paul, Minnesota 55110
651.490.2166

NEW HORIZON ACADEMY -
DOUGLAS 234 FILING, NO. 6
PARKER, CO

This drawing is an instrument of service and shall remain the property of Short Elliott Hendrickson, Inc. (SEH). This drawing and the concepts and ideas contained herein shall not be used, reproduced, revised, or retained without the express written approval of SEH.
 Submission or distribution of this drawing to meet official or regulatory requirements or for other purposes in connection with the project is not to be construed as publication in derogation of any of the rights of SEH.
 COPYRIGHT © 2021
Short Elliott Hendrickson, Inc.
All Rights Reserved

SEH Project: NHAC 156217
Checked By: SB
Drawn By: DRS

Project Status: CONSTRUCTION SET
Issue Date: 6/25/2021

Revision Issue		
Rev. #	Description	Date

EXTERIOR MATERIALS BOARD



Building a Better World for All of Us

TYPE	DESCRIPTION	CATALOG #	MOUNTING
P1	POLE MOUNTED AREA LED LIGHT FIXTURE, 4000K, TYPE TFM FORWARD THROW DISTRIBUTION W/HOUSE SIDE SHIELDS POLE: ROUND STRAIGHT STEEL, DARK BRONZE FINISH	LITHONIA LIGHTING: DSX1-LED-P1-40K-TFTM-MVOLT-RPA-HS POLE: LITHONIA LIGHTING RSS, DDBXD	POLE: 22 FEET
P2	TWIN POLE MOUNTED AREA LED LIGHT FIXTURES, 4000K, TYPE 3 MEDIUM DISTRIBUTION POLE: ROUND STRAIGHT STEEL, DARK BRONZE FINISH	LITHONIA LIGHTING: DSX1-LED-P2-40K-T3M-MVOLT-RPA POLE: LITHONIA LIGHTING RSS, DDBXD	POLE: 22 FEET
P3	POLE MOUNTED AREA LED LIGHT FIXTURE, 4000K, TYPE 4 MEDIUM DISTRIBUTION W/HOUSE SIDE SHIELDS POLE: ROUND STRAIGHT STEEL, DARK BRONZE FINISH	LITHONIA LIGHTING: DSX1-LED-P1-40K-T4M-MVOLT-RPA-HS POLE: LITHONIA LIGHTING RSS, DDBXD	POLE: 22 FEET
S2M	WALL MOUNTED AREA LIGHT FIXTURE, 4000K, TYPE 2 MEDIUM DISTRIBUTION.	LITHONIA LIGHTING: DSXW1-LED-10C-700-40K-T2M	WALL: 12 FEET
S2S	WALL MOUNTED AREA LIGHT FIXTURE, 4000K, TYPE 2 SHORT DISTRIBUTION.	LITHONIA LIGHTING: DSXW1-LED-10C-700-40K-T2S	WALL: 12 FEET



PHOTOMETRIC SITE PLAN GENERAL NOTES:
 A. ALL EXTERIOR LIGHT FIXTURES SHALL BE FULL CUTOFF.

Owner
 New Horizon Academy
 3405 Annapolis Lane
 N., Suite 100
 Plymouth, MN 55447
 763.557.1111

Architect
 Short Elliott Hendrickson, Inc.
 2000 South Colorado Boulevard
 Tower One, Suite 6000
 Denver, Colorado 80222
 720.540.6800

Landscape Architect
 Short Elliott Hendrickson, Inc.
 10901 Red Circle Drive
 Suite 300
 Minnetonka, MN 55343
 952.912.2600

Civil Engineer
 Short Elliott Hendrickson, Inc.
 418 West Superior Street
 Suite 200
 Duluth, MN 55802
 218.279.3000

Structural Engineer

Mechanical Engineer

Electrical Engineer

**NEW HORIZON ACADEMY -
 DOUGLAS 234 FILING, NO. 6
 PARKER, CO**

This drawing is an instrument of service and shall remain the property of Short Elliott Hendrickson, Inc. (SEH). This drawing and the concepts and ideas contained herein shall not be used, reproduced, revised, or retained without the express written approval of SEH.

Substitution or distribution of this drawing in any form or for any purpose without the express written approval of SEH is prohibited.

SEH Project: NHOAC 158217
 Checked By: RW
 Drawn By: VT

Project Status: CONSTRUCTION SET
 Issue Date: 5/25/2021

Rev. #	Description	Date

1 PHOTOMETRIC SITE PLAN
 Scale: 1/16" = 1'-0"



D-Series Size 1 LED Wall Luminaire

DSXW1-LED-10C-700-40K-T2M
DSXW1-LED-10C-700-40K-T2S

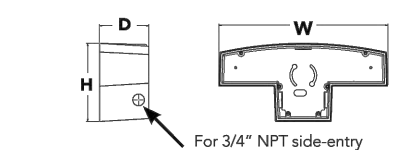


d'series

Specifications Luminaire
Width: 13-3/4" (34.9 cm)
Depth: 10" (25.4 cm)
Height: 6-3/8" (162.2 cm)

Back Box (BBW, ELCW)

BBW: 13-3/4" (34.9 cm) width, 5 lbs (2.3 kg) weight
ELCW: 4" (102 mm) depth, 10 lbs (4.5 kg) weight



Introduction

The D-Series Wall luminaire is a stylish, fully integrated LED solution for building-mount applications. It features a sleek, modern design and is carefully engineered to provide long-lasting, energy-efficient lighting with a variety of optical and control options for customized performance.

With an expected service life of over 20 years of nighttime use and up to 74% in energy savings over comparable 250W metal halide luminaires, the D-Series Wall is a reliable, low-maintenance lighting solution that produces sites that are exceptionally illuminated.

Ordering Information

EXAMPLE: DSXW1 LED 20C 1000 40K T3M MVOLT DBDXTD

Series	LEDs	Drive Current	Color Temperature	Distribution	Voltage	Mounting	Control Options
DSXW1 LED	10C	350 530 mA	30K 3000K	T2S Type I Short	MVOLT*	Shipped included (blank) Surface mounting bracket	Shipped installed PEG Photometric cell, button type
	20C	700 1070 mA	40K 4000K	T2M Type II Medium	120*		
			50K 5000K	T3S Type III Short	208*		
			AMBC Amber phosphor converted	T3M Type III Medium	240*	BBW Surface-mounted back box (for conduit entry)*	PRIR 180° motion/ambient light sensor <15 mtp/ft ²
				T4M Type III Medium	277*		
				IFTM Forward throw Medium	347**		PRIFCW Motion/ambient sensor, 8-15' mounting height, ambient sensor enabled at 16"
					347**		PRIFCW Motion/ambient sensor, 15-30' mounting height, ambient sensor enabled at 16"
					480**		ELCW Emergency battery backup (includes external component enclosure, CA Title 20 Noncompliant*)

Other Options	Finish	Accessories
Shipped installed SF Single face (120, 277 or 347V) ** DF Double face (208, 240 or 480V) ** HS House-side shield ** SPD Separate surge protection **	DBD Black DBDT Dark bronze DBAL Dark aluminum DBW White DBXTD Textured natural aluminum	DSXD Dark bronze DSDB Dark bronze DSSTD Textured sandstone

Accessories	Notes
DSXW1-HS House-side shield per luminaire	1. 20C, 1000 not available with PRIR, PRIFCW or PRIFCWV.
DSXW1-BBW Back box assembly	2. MVOLT drive operates on any line voltage from 120-277V (50/60 Hz).
DSXW1-SPD Separate surge protection **	3. Single face (SF) requires 120, 277 or 347 voltage options. Double face (DF) requires 208, 240 or 480 voltage options.

Notes:
1. 20C, 1000 not available with PRIR, PRIFCW or PRIFCWV.
2. MVOLT drive operates on any line voltage from 120-277V (50/60 Hz).
3. Single face (SF) requires 120, 277 or 347 voltage options. Double face (DF) requires 208, 240 or 480 voltage options.
4. Only available with 20C, 700mA or 1000mA. Not available with PRIR or PRIFCW.
5. Back box ships installed on luminaire. Cannot be field installed. Cannot be ordered as an accessory.
6. Photometric (PE) requires 120, 208, 240, 277 or 347 voltage option. Not available with motion/ambient light sensors (PRIR or PRIFCW).
7. Reference Motion Sensor table on page 3.
8. Cold weather (CW) rated. Not compatible with conduit entry applications. Not available with BBW mounting option. Not available with fanless. Not available with 347 or 480 voltage options. Emergency components located in back box housing. Emergency mode IES files located on product page at www.lithonia.com
9. Not available with SPD.
10. Not available with ELCW.
11. Also available as a separate accessory; see Accessories information.
12. Not available with ELCW.

Performance Data

DSXW1-LED-10C-700-40K-T2M
DSXW1-LED-10C-700-40K-T2S

Lumen values are from photometric tests performed in accordance with IESNA LM-79-08. Contact factory for performance data on any configurations not shown here.

Temp	Optic	Power Factor	Beam Spread	Beam Diameter (ft)	Beam Diameter (m)	Beam Angle (deg)	Beam Angle (rad)	Beam Area (sq ft)	Beam Area (sq m)	Beam Length (ft)	Beam Length (m)	Beam Volume (cu ft)	Beam Volume (cu m)											
10C (10/10)	350mA	13W	T2S	1415	0	0	1	109	1.520	0	0	1	117	1.530	0	0	1	118	1.540	0	0	1	119	
				1440	0	0	1	104	1.440	0	0	1	111	1.450	0	0	1	112	1.460	0	0	1	113	1.470
				1465	0	0	1	100	1.500	0	0	1	106	1.520	0	0	1	110	1.480	0	0	1	114	1.540
				1490	0	0	1	107	1.480	0	0	1	114	1.497	0	0	1	115	1.476	0	0	1	116	1.457
				1515	0	0	1	104	1.450	0	0	1	111	1.467	0	0	1	112	1.458	0	0	1	113	1.449
				1540	0	0	1	109	1.515	0	0	1	117	1.535	0	0	1	117	1.492	0	0	1	118	1.453
	530 mA	19W	T2S	2051	1	0	1	108	2.051	1	0	1	116	2.220	1	0	1	117	2.264	0	0	1	117	
				2076	1	0	1	100	2.076	1	0	1	111	2.151	1	0	1	112	2.205	0	0	1	113	
				2101	1	0	1	107	2.101	1	0	1	115	2.194	1	0	1	115	2.250	0	0	1	116	
				2126	1	0	1	106	2.126	1	0	1	114	2.172	1	0	1	114	2.227	0	0	1	115	
				2151	1	0	1	104	2.151	1	0	1	111	2.129	1	0	1	112	2.172	0	0	1	113	
				2176	1	0	1	109	2.176	1	0	1	117	2.229	1	0	1	117	2.284	0	0	1	118	
700 mA	20W	T2S	2493	1	0	1	101	2.493	1	0	1	109	2.634	1	0	1	109	2.544	0	0	1	110		
			2499	1	0	1	96	2.499	1	0	1	103	2.501	1	0	1	104	2.472	0	0	1	105		
			2505	1	0	1	99	2.505	1	0	1	106	2.574	1	0	1	107	2.537	0	0	1	108		
			2511	1	0	1	97	2.511	1	0	1	104	2.538	1	0	1	105	2.481	0	0	1	106		
			2517	1	0	1	101	2.517	1	0	1	108	2.605	1	0	1	109	2.530	0	0	1	110		
			2523	1	0	1	94	2.523	1	0	1	101	2.582	1	0	1	102	2.525	0	0	1	103		
	30W	T2S	3134	1	0	1	96	3.134	1	0	1	97	3.294	1	0	1	97	3.130	0	0	1	98		
			3144	1	0	1	91	3.144	1	0	1	90	3.198	1	0	1	91	3.143	0	0	1	92		
			3154	1	0	1	91	3.154	1	0	1	90	3.198	1	0	1	91	3.143	0	0	1	92		
			3164	1	0	1	96	3.164	1	0	1	95	3.354	1	0	1	96	3.228	0	0	1	97		
			3174	1	0	1	94	3.174	1	0	1	93	3.360	1	0	1	94	3.272	0	0	1	95		
			3184	1	0	1	117	3.184	1	0	1	116	3.694	1	0	1	116	3.694	0	0	1	116		
350 mA	23W	T4M	2294	1	0	1	120	2.294	1	0	1	120	2.294	1	0	1	120	2.294	1	0	1	120		
			2304	1	0	1	118	2.304	1	0	1	116	2.302	1	0	1	117	2.304	1	0	1	117		
			2314	1	0	1	117	2.314	1	0	1	116	2.304	1	0	1	116	2.304	1	0	1	116		
			2324	1	0	1	120	2.324	1	0	1	119	2.304	1	0	1	119	2.304	1	0	1	119		
			2334	1	0	1	120	2.334	1	0	1	119	2.304	1	0	1	119	2.304	1	0	1	119		
			2344	1	0	1	120	2.344	1	0	1	119	2.304	1	0	1	119	2.304	1	0	1	119		
	530 mA	33W	T4M	3493	1	0	1	115	3.493	1	0	1	114	3.539	1	0	1	115	3.477	1	0	1	115	
				3499	1	0	1	114	3.499	1	0	1	113	3.435	1	0	1	113	3.451	1	0	1	113	
				3505	1	0	1	112	3.505	1	0	1	111	3.497	1	0	1	111	3.497	1	0	1	111	
				3511	1	0	1	116	3.511	1	0	1	115	3.494	1	0	1	115	3.494	1	0	1	115	
				3517	1	0	1	116	3.517	1	0	1	115	3.494	1	0	1	115	3.494	1	0	1	115	
				3523	1	0	1	116	3.523	1	0	1	115	3.494	1	0	1	115	3.494	1	0	1	115	
700 mA	40W	T4M	4593	1	0	1	112	4.593	1	0	1	112	4.593	1	0	1	112	4.593	1	0	1	112		
			4599	1	0	1	110	4.599	1	0	1	110	4.599	1	0	1	110	4.599	1	0	1	110		
			4605	1	0	1	108	4.605	1	0	1	108	4.605	1	0	1	108	4.605	1	0	1	108		
			4611	1	0	1	112	4.611	1	0	1	111	4.611	1	0	1	111	4.611	1	0	1	111		
			4617	1	0	1	112	4.617	1	0	1	111	4.617	1	0	1	111	4.617	1	0	1	111		
			4623	1	0	1	112	4.623	1	0	1	111	4.623	1	0	1	111	4.623	1	0	1	111		
	1000 mA	73W	T4M	7293	1	0	1	107	7.293	1	0	1	107	7.293	1	0	1	107	7.293	1	0	1	107	
				7299	1	0	1	105	7.299	1	0	1	105	7.299	1	0	1	105	7.299	1	0	1	105	
				7305	1	0	1	103	7.305	1	0	1	103	7.305	1	0	1	103	7.305	1	0	1	103	
				7311	1	0	1	107	7.311	1	0	1	106	7.311	1	0	1	106	7.311	1	0	1	106	
				7317	1	0	1	107	7.317	1	0	1	106	7.317	1	0	1	106	7.317	1	0	1	106	
				7323	1	0	1	107	7.323	1	0	1	106	7.323	1	0	1	106	7.323	1	0	1	106	

Temp	Optic	Power Factor	Beam Spread	Beam Diameter (ft)	Beam Diameter (m)	Beam Angle (deg)	Beam Angle (rad)	Beam Area (sq ft)	Beam Area (sq m)	Beam Length (ft)	Beam Length (m)	Beam Volume (cu ft)	Beam Volume (cu m)											
20C (20/10)	350mA	13W	T2S	1415	0	0	1	109	1.520	0	0	1	117	1.530	0	0	1	118	1.540	0	0	1	119	
				1440	0	0	1	104	1.440	0	0	1	111	1.450	0	0	1	112	1.460	0	0	1	113	1.470
				1465	0	0	1	100	1.500	0	0	1	106	1.520	0	0	1	110	1.480	0	0	1	114	1.540
				1490	0	0	1	107	1.480	0	0	1	114	1.497	0	0	1	115	1.476	0	0	1	116	1.457
				1515	0	0	1	104	1.450	0	0	1	111	1.467	0	0	1	112	1.458	0	0	1	113	1.449
				1540	0	0	1	109	1.515	0	0	1	117	1.535	0	0	1	117	1.492	0	0	1	118	1.453
	530 mA	19W	T2S	2051	1	0	1	108	2.051	1	0	1	116	2.220	1	0	1	117	2.264	0	0	1	117	
				2076	1	0	1	100	2.076	1	0	1	111	2.151	1	0	1	112	2.205	0	0	1	113	
				2101	1	0	1	107	2.101	1	0	1	115	2.194	1	0	1	115	2.250	0	0	1	116	
				2126	1	0	1	106	2.126	1	0	1	114	2.172	1	0	1	114	2.227	0	0	1	115	
				2151	1	0	1	104	2.151	1	0	1	111	2.129	1	0	1	112	2.172	0	0	1	113	
				2176	1	0	1	109	2.176	1	0	1	117	2.229	1	0	1	117	2.284	0	0	1	118	
700 mA	20W	T2S	2493	1	0	1	101	2.493	1	0	1	109	2.634	1	0	1	109	2.544	0	0	1	110		
			2499	1	0	1																		

Performance Data

Lumen Ambient Temperature (LAT) Multipliers

Use these factors to determine relative lumen output for average ambient temperatures from 0-40°C (32-104°F).

Ambient Temperature	Multiplier
0°C	1.00
5°C	1.04
10°C	1.07
15°C	1.09
20°C	1.09
25°C	1.09
30°C	0.99
35°C	0.96
40°C	0.97

Projected LED Lumen Maintenance

Data references the extrapolated performance projections for the luminaire noted in a 25°C ambient, based on 100,000 hours of LED testing based per IESNA LM-80-08 and projected per IESNA TM-21-11.

Operating Hours	Lumen Maintenance Factor
0	1.00
25,000	0.96
50,000	0.92
100,000	0.85

Option	Dimmed State	High Level (stepped)	Photocell Operation	Dwell Time	Ramp-up Time	Ramp-down Time
PIR or PIRH	3V (37%) Output	10V (100%) Output	Enabled @ 5°C	5 min	3 sec	5 min
*PIR/PICH or *PIR/PICH	3V (37%) Output	10V (100%) Output	Enabled @ 1°C	5 min	3 sec	5 min

Nomenclature	Description	Functionality	Primary control device	Notes
FAO	Field adjustable output device installed inside the luminaire, used to fine-tune dimming levels.	Allows the luminaire to be manually dimmed, effectively increasing the light output.	FAO device	Cannot be used with other control options that need the FAO knob.
DS	Drivers wired independently for 50/50 lumen operation.	The luminaire is wired to two separate circuits, allowing for 50/50 operation.	Independently wired drivers	Requires two separately switched circuits. Consider night A/B as a more cost-effective alternative.
PIES or PIRH	Twist-lock photocell receptacle.	Compatible with standard twist-lock photocells. Includes a driver operation, or advanced control wires that provide 0-10V dimming signals.	Twist-lock photocell such as DLI Elite or advanced control nodes such as ROAM.	Use 4-5 ft dimming leads on driver. PIES is an capped inside luminaire.
PIR or PIRH	Motion sensor with integral photocell. PIR for 8-15' mounting; PIRH for 15-30' mounting.	Luminaire dims when an occupancy is detected.	Acuity Controls SGR8	Also available with PIR/PICH when the sensor photocell is used for dusk-to-dawn operation.
NIGHT/PIR/PIR	nLight AIR enabled luminaire for motion sensing, photocell and wireless communication.	Motion and ambient light sensing with group response. Scheduled dimming with motion sensor override when wireless connected to the nLight Edge.	nLight AIR n200	nLight AIR sensors can be programmed and commissioned from the ground using the nLight App.

One Lithonia Way • Conyers, Georgia 30012 • Phone: 1-800-705-SERV (3738) • www.lithonia.com
© 2011-2020 Acuity Brands Lighting, Inc. All rights reserved.

DSX1-LED
Rev. 01/20/20
Page 4 of 8

Electrical Load

Performance Package	IP Rating	LED Count	Driver	Voltage	Current (A)					
					120	208	240	277	347	480
P1	30	530	54	0.45	0.26	0.23	0.19	0.13	0.13	0.13
P2	30	700	70	0.59	0.34	0.30	0.25	0.20	0.16	0.16
P3	30	1050	102	0.86	0.50	0.44	0.38	0.30	0.22	0.22
P4	30	1250	125	1.06	0.60	0.52	0.46	0.37	0.27	0.27
P5	30	1400	138	1.36	0.67	0.58	0.51	0.40	0.29	0.29
P6	40	1250	163	1.36	0.78	0.68	0.59	0.47	0.34	0.34
P7	40	1400	183	1.53	0.88	0.76	0.66	0.53	0.38	0.38
P8	60	1050	207	1.74	0.98	0.87	0.76	0.64	0.49	0.49
P9	60	1250	241	2.01	1.16	1.01	0.89	0.70	0.51	0.51
P10	60	530	106	0.90	0.52	0.47	0.41	0.33	0.27	0.27
P11	60	700	137	1.15	0.67	0.60	0.53	0.42	0.32	0.32
P12	60	1050	207	1.74	0.99	0.87	0.76	0.60	0.46	0.46
P13	60	1250	231	1.93	1.12	0.97	0.86	0.67	0.49	0.49

Rotated Optics (Request LIO or RPO)

Performance Data

Lumen Output

Lumen values are from photometric tests performed in accordance with IESNA LM-79-08. Data is considered to be representative of the configurations shown, within the tolerances allowed by Lighting Facts. Contact factory for performance data on any configurations not shown here.

LED Count	Beam Cutoff	Power Package	System Watts	Dist. Type	IP65 (1000 Lx @ 100')						IP66 (1000 Lx @ 100')						IP67 (1000 Lx @ 100')								
					Lumens			lm/W			Lumens			lm/W			Lumens			lm/W					
					L	U	D	L	U	D	L	U	D	L	U	D	L	U	D	L	U	D			
30	530	P1	5W	5W	T15	6,457	2	0	2	120	8,956	2	0	2	129	7,644	2	0	2	130	7,644	2	0	2	130
					T25	6,450	2	0	2	119	8,949	2	0	2	129	7,637	2	0	2	130	7,630	2	0	2	130
					T3M	6,483	1	0	1	120	8,984	2	0	2	129	7,673	2	0	2	131	7,673	2	0	2	131
					T35	6,279	2	0	2	116	8,544	2	0	2	125	8,890	2	0	2	127	8,890	2	0	2	127
					T3M	6,468	1	0	1	120	8,960	1	0	1	129	7,656	1	0	1	131	7,656	1	0	1	131
					T4M	6,327	1	0	1	117	8,816	1	0	1	126	8,902	1	0	1	128	8,902	1	0	1	128
					FTM	6,464	1	0	1	120	8,963	1	0	1	129	7,651	1	0	1	131	7,651	1	0	1	131
					TS5	6,722	2	0	2	124	7,242	3	0	3	134	7,314	3	0	3	136	7,314	3	0	3	136
					TS5	6,728	2	0	2	125	7,248	2	0	2	134	7,340	2	0	2	136	7,340	2	0	2	136
					TSM	6,713	3	0	3	124	7,220	3	0	3	134	7,314	3	0	3	136	7,314	3	0	3	136
					TSM	6,667	3	0	3	123	7,182	3	0	3	133	7,273	3	0	3	135	7,273	3	0	3	135
					BCL	5,299	1	0	1	98	5,709	1	0	1	106	5,781	1	0	1	107	5,781	1	0	1	107
LED	1,943	1	0	1	73	4,248	1	0	1	79	4,308	1	0	1	80	4,308	1	0	1	80					
KCO	1,943	1	0	1	73	4,248	1	0	1	79	4,302	1	0	1	80	4,302	1	0	1	80					
T15	8,249	2	0	2	112	8,696	2	0	2	127	8,999	2	0	2	129	8,999	2	0	2	129					
T25	8,249	2	0	2	118	8,696	2	0	2	127	8,999	2	0	2	129	8,999	2	0	2	129					
T3M	8,283	2	0	2	118	8,923	2	0	2	127	9,036	2	0	2	129	9,036	2	0	2	129					
T35	8,023	2	0	2	115	8,641	2	0	2	125	8,733	2	0	2	125	8,733	2	0	2	125					
T3M	8,263	2	0	2	118	8,901	2	0	2	127	9,014	2	0	2	129	9,014	2	0	2	129					
T4M	8,083	2	0	2	115	8,708	2	0	2	126	8,818	2	0	2	128	8,818	2	0	2	128					
FTM	8,257	2	0	2	118	8,906	2	0	2	127	9,008	2	0	2	129	9,008	2	0	2	129					
TS5	8,388	3	0	3	123	8,252	3	0	3	132	8,369	3	0	3	134	8,369	3	0	3	134					
TS5	8,399	3	0	3	123	8,259	3	0	3	132	8,376	3	0	3	134	8,376	3	0	3	134					
TSM	8,573	3	0	3	122	8,246	3	0	3	132	8,353	3	0	3	134	8,353	3	0	3	134					
TSW	8,517	3	0	3	122	8,276	3	0	3	131	8,391	3	0	3	133	8,391	3	0	3	133					
BCL	6,979	1	0	1	97	7,293	1	0	1	104	7,386	1	0	1	106	7,386	1	0	1	106					
LED	5,038	1	0	1	72	5,427	1	0	1	78	5,496	1	0	1	79	5,496	1	0	1	79					
KCO	5,038	1	0	1	72	5,427	1	0	1	78	5,496	1	0	1	79	5,496	1	0	1	79					
T15	11,663	2	0	2	114	12,562	3	0	3	123	12,221	3	0	3	125	12,221	3	0	3	125					
T25	11,648	2	0	2	114	12,548	3	0	3	123	12,207	3	0	3	125	12,207	3	0	3	125					
T3M	11,708	2	0	2	115	12,613	2	0	2	124	12,273	2	0	2	125	12,273	2	0	2	125					
T35	11,339	2	0	2	111	12,335	3	0	3	120	12,339	3	0	3	121	12,339	3	0	3	121					
TSM	11,680	2	0	2	115	12,582	2	0	2	123	12,342	2	0	2	125	12,342	2	0	2	125					
T4M	11,438	2	0	2	112	12,389	2	0	2	121	12,465	2	0	2	122	12,465	2	0	2	122					
FTM	11,673	2	0	2	114	12,575	2	0	2	123	12,374	2	0	2	125	12,374	2	0	2	125					
TS5	12,140	3	0	3	119	13,078	3	0	3	128	13,244	3	0	3	130	13,244	3	0	3	130					
TS5	12,144	4	0	4	119	13,089	3	0	3	128	13,254	3	0	3	130	13,254	3	0	3	130					
TSM	12,119	4	0	4	119	13,056	4	0	4	128	13,221	4	0	4	130	13,221	4	0	4	130					
TSW	12,040	4	0	4	118	12,970	4	0	4	127	13,134	4	0	4	129	13,134	4	0	4	129					
BCL	9,576	1	0	1	96	10,139	1	0	1	101	10,440	1	0	1	102	10,440	1	0	1	102					
LED	7,371	1	0	1	70	7,671	1	0	1	75	7,748	1	0	1	76	7,748	1	0	1	76					
KCO	7,371	1	0	1	70	7,671	1	0	1	75	7,748	1	0	1	76	7,748	1	0	1	76					
T15	14,845	2	0	2	107	14,473	3	0	3	116	14,667	3	0	3	117	14,667	3	0	3	117					
T25	13,423	3	0	3	107	14,458	3	0	3	116	14,641	3	0	3	117	14,641	3	0	3	117					
T3M	14,840	2	0	2	108	14,532	3	0	3	116	14,716	3	0	3	118	14,716	3	0	3	118					
T35	13,064	3	0	3	105	14,074	3	0	3	113	14,252	3	0	3	114	14,252	3	0	3	114					

NHA Provided Planting Schedule							
SYM	QTY	Botanical Name	Common Name	Size	Mature Size (H x W)	Water Usage	Notes
34 Trees							
Deciduous							
GD	3	Gymnocladus dioica	Kentucky Coffee Tree	2.5" Cal B&B	60' x 50'	Xeric	
CC	6	Crataegus crus-galli var. inermis	Thornless Cockspur Hawthorn	2" Cal B&B	20' x 20'	Xeric	
MP	10	Malus 'Prairifire'	Prairifire Crabapple	2" Cal B&B	20' x 20'	Low	
TA	7	Tilia americana 'Boulevard'	Boulevard Linden	2.5" Cal B&B	60' x 30'	Low	
Coniferous							
PN	8	Pinus Nigra	Austrian Pine	6' HT	50' x 25'	Xeric	
214 Shrubs							
Deciduous							
PA	10	Pervoskia arcticifolia	Russian Sage	5 Gal	4' x 4'	Xeric	
SJ	83	Spiraea japonica 'Little Princess'	Little Princess Spirea	5 Gal	2' x 3'	Low	
SP	23	Syringa Patula 'Miss Kim'	Miss Kim Lilac	5 Gal	7' x 6'	Low	
EF	47	Euonymus fortunei 'Emerald Gaiety'	Emerald Gaiety Euonymus	5 Gal	4' x 4'	Low	
Coniferous							
JS	50	Juniperus sabina 'Broadmoor'	Broadmoor Juniper	5 Gal	1' x 5'	Xeric	
JC	1	Juniperus chinensis 'Spearmint'	Spearmint Juniper	5Gal	15' x 5'	Xeric	
686 Ornamental Grasses							
CA	94	Calamagrotis acutiflora 'Karl Foerster'	Karl Foerster Feather Reed Grass	1 Gal	5' x 2'	Low	
FG	592	Festuca glauca 'Elija Blue'	Elija Blue Fescue	1 Gal	10" x 10"	Xeric	

Developer's Planting Schedule		
QTY	Botanical Name	Common Name
15 Trees		
Deciduous		
4	Catalpa Speciosa	Catalpa
Ornamental		
2	Koeleruteria paniculata	Goldenrain Tree
Coniferous		
3	Picea pungens 'Bakeri'	Bakeri Spruce
6	Pinus nigra	Austrian Pine
73 Shrubs		
Deciduous		
6	Amelanchier alnifolia	Saskatoon Serviceberry
5	Cornus sericea 'Kelseyi'	Kelsey Dogwood
15	Perovskia atriplicifolia	Russian Sage
9	Prunus besseyi 'Pawnee Buttes'	Sandcherry Pawnee Buttes
3	Rhus trilobata	Threeleaf Sumac
3	Syringa patula 'Miss Kim'	Miss Kim Dwarf Lilac
Coniferous		
5	Cytisus x 'Minstead'	Minstead Broom
7	Euonymus fortunei 'Emerald Gaiety'	Emerald Gaiety Euonymus
3	Juniperus sabina 'Arcadia'	Arcadia Juniper
17	Pinus mugo 'Mops'	Mops Mugo Pine
75 Ornamental Grasses		
75	Pennisetum alopecuroides 'Little Bunny'	Little Bunny Fountain Grass

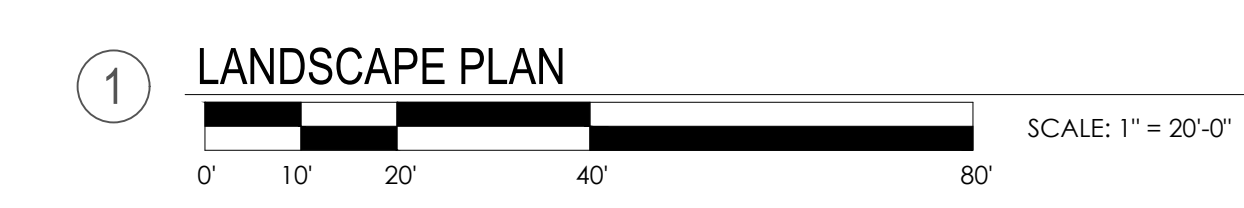
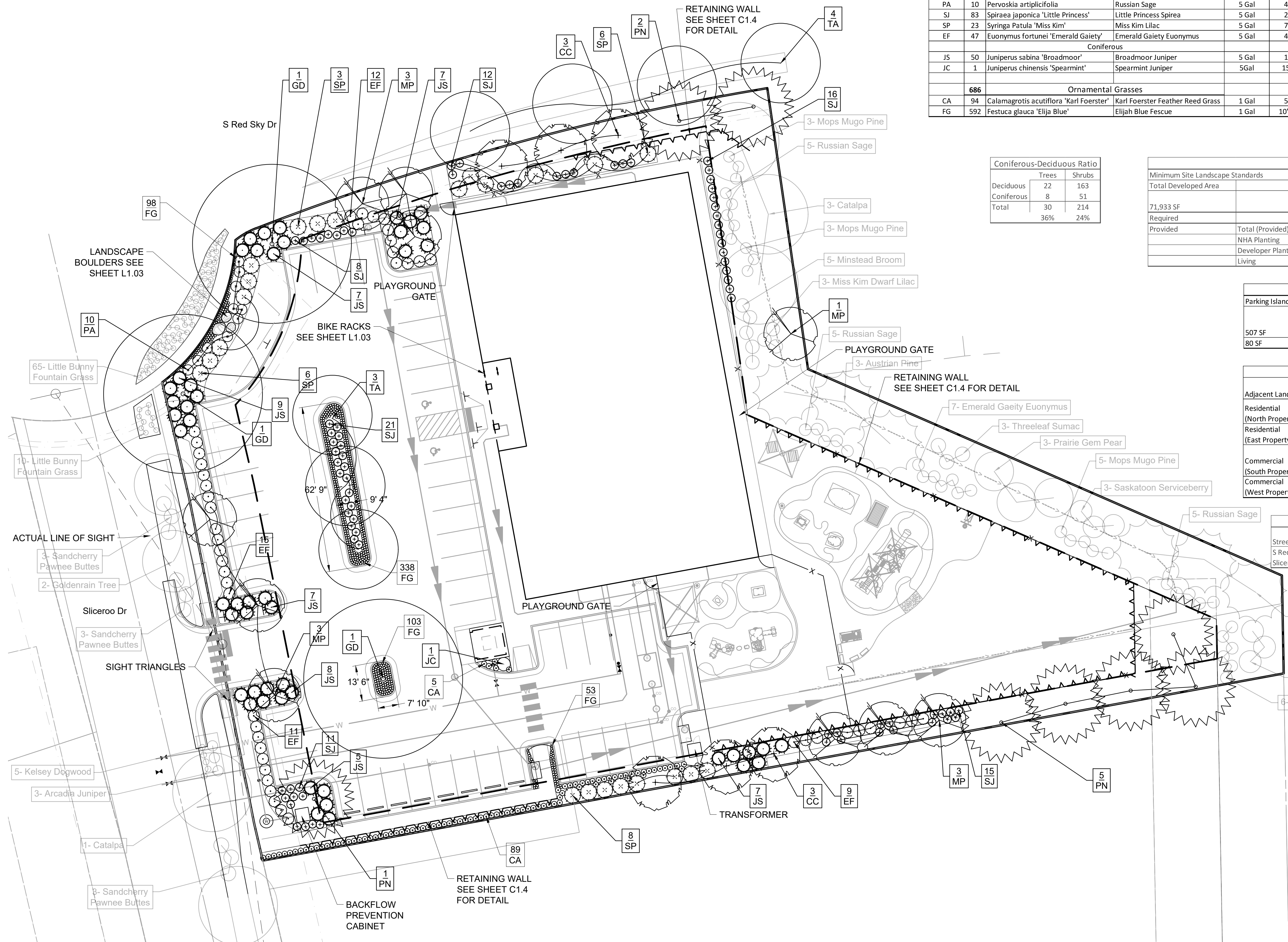
Coniferous-Deciduous Ratio		
	Trees	Shrubs
Deciduous	22	163
Coniferous	8	51
Total	30	214
	36%	24%

Landscape Requirements				
Minimum Site Landscape Standards				
Total Developed Area	Site Landscape Requirements	Site Trees	Site Shrubs	Grasses
71,933 SF		1 Tree/ 1,500 SF (1/4 Evergreen)	5 Shrubs/ 1,500 SF	3 Grasses/ 1 Shrub
Required	Landscape Area 15%	22 Trees	106 Shrubs	N/A
Provided	Total (Provided) 31,851 SF (44%)	45	287	761
	NHA Planting	30	214	686
	Developer Planting	15	73	75
	Living	26,255 SF (82%)	N/A	N/A

Parking Lot Interior Requirements				
Parking Island Area	Required	Provided Trees	Provided Shrubs	Provided Grasses
	1 Tree and 5 shrubs each incremental 162 SF. Each additional incremental 15 SF, and additional shrub shall be planted.	(3 Req.) 3 Provided (0 Req.) 1 Provided	(16 Req.) 21 Provided (0 Req.) 0 Provided	(0 Req.) 338 Provided (0 Req.) 103 Provided
507 SF				
80 SF				

Site Perimeter Requirements					
Adjacent Land Use	Perimeter Length	Required	Total Provided	NHA Provided	Developer Provided
Residential (North Property Line)	202 LF	1 Tree and 5 Shrubs for each 25 LF of edge	8 Trees/ 40 Shrubs	8 Trees/ 54 Shrubs	8 Trees/ 54 Shrubs N/A
Residential (East Property Line)	339 LF	1 Tree and 5 Shrubs for each 25 LF of edge	14 Trees/ 70 Shrubs	14 Trees/ 72 Shrubs	2 Trees/ 16 Shrubs 12 Trees/ 56 Shrubs
Commercial (South Property Line)	392 LF	1 Tree and 5 Shrubs for each 40 LF of edge	10 Trees/ 50 Shrubs	11 Trees/ 50 Shrubs	12 Trees/ 50 Shrubs N/A
Commercial (West Property Line)	185 LF	1 Tree and 5 Shrubs for each 40 LF of edge	5 Trees/ 25 Shrubs	5 Trees/ 55 Shrubs	5 Trees/ 55 Shrubs N/A

Street Tree Requirements					
Street	Street Frontage Length	Required Trees			Total Trees Provided
		(1 Tree/ 40 Lineal Feet)	Provided NHA	Provided Developer	
S Red Sky Dr	180 LF	4	4	0	4
Sliceroo Dr	137 LF	3	0	3	3



Owner
New Horizon Academy
3405 Annapolis Lane
N., Suite 100
Plymouth, MN 55447
763.557.1111

Architect
Short Elliott Hendrickson, Inc.
2000 South Colorado Boulevard
Tower One, Suite 6000
Denver, Colorado 80222
720.540.6800

Landscape Architect
Short Elliott Hendrickson, Inc.
10901 Red Circle Drive
Suite 300
Minnetonka, MN 55343
952.912.2600

Civil Engineer
Short Elliott Hendrickson, Inc.
418 West Superior Street
Suite 200
Duluth, MN 55802
218.279.3000

Structural Engineer

Mechanical Engineer

Electrical Engineer

NEW HORIZON ACADEMY - DOUGLAS 234 FILING, NO. 6
PARKER, CO

This drawing is an instrument of service and shall remain the property of Short Elliott Hendrickson, Inc. (SEH). This drawing and the concepts and ideas contained herein shall not be used, reproduced, revised, or retained without the express written approval of SEH.

Submission or distribution of this drawing to meet official or regulatory requirements or for other purposes in connection with the project is not to be construed as publication in derogation of any of the rights of SEH.

SEH Project NHOAC 156217
Checked By
Drawn By

Project Status CONSTRUCTION SET
Issue Date 6/25/2021

Revision Issue
Rev. # Description Date

LANDSCAPE PLAN
L1.01

