

**NOT FOR
CONSTRUCTION**

Owner
New Horizon Academy
3405 Annapolis Lane
N., Suite 100
Plymouth, MN 55447
763.557.1111

Architect
Short Elliott Hendrickson, Inc.
2000 South Colorado Boulevard
Tower One, Suite 6000
Denver, Colorado 80222
720.540.6800

Landscape Architect
Short Elliott Hendrickson, Inc.
10901 Red Circle Drive
Suite 300
Minnetonka, MN 55343
952.912.2800

Civil Engineer
Short Elliott Hendrickson, Inc.
418 West Superior Street
Suite 200
Duluth, MN 55802
218.279.3000

Structural Engineer

Mechanical Engineer

Electrical Engineer

New Horizon Academy
**NEW HORIZON ACADEMY -
DOUGLAS 234 FILING, NO. X**
PARKER, CO

This drawing is an instrument of service and shall remain the property of Short Elliott Hendrickson, Inc. (SEH). This drawing and the concepts and ideas contained herein shall not be used, reproduced, revised, or retained without the express written approval of SEH.

Submission or distribution of this drawing to meet official or regulatory requirements or for other purposes in connection with the project is not to be construed as publication in derogation of any of the rights of SEH.

SEH Project NHOAC 156217
Checked By DRH
Drawn By AMP

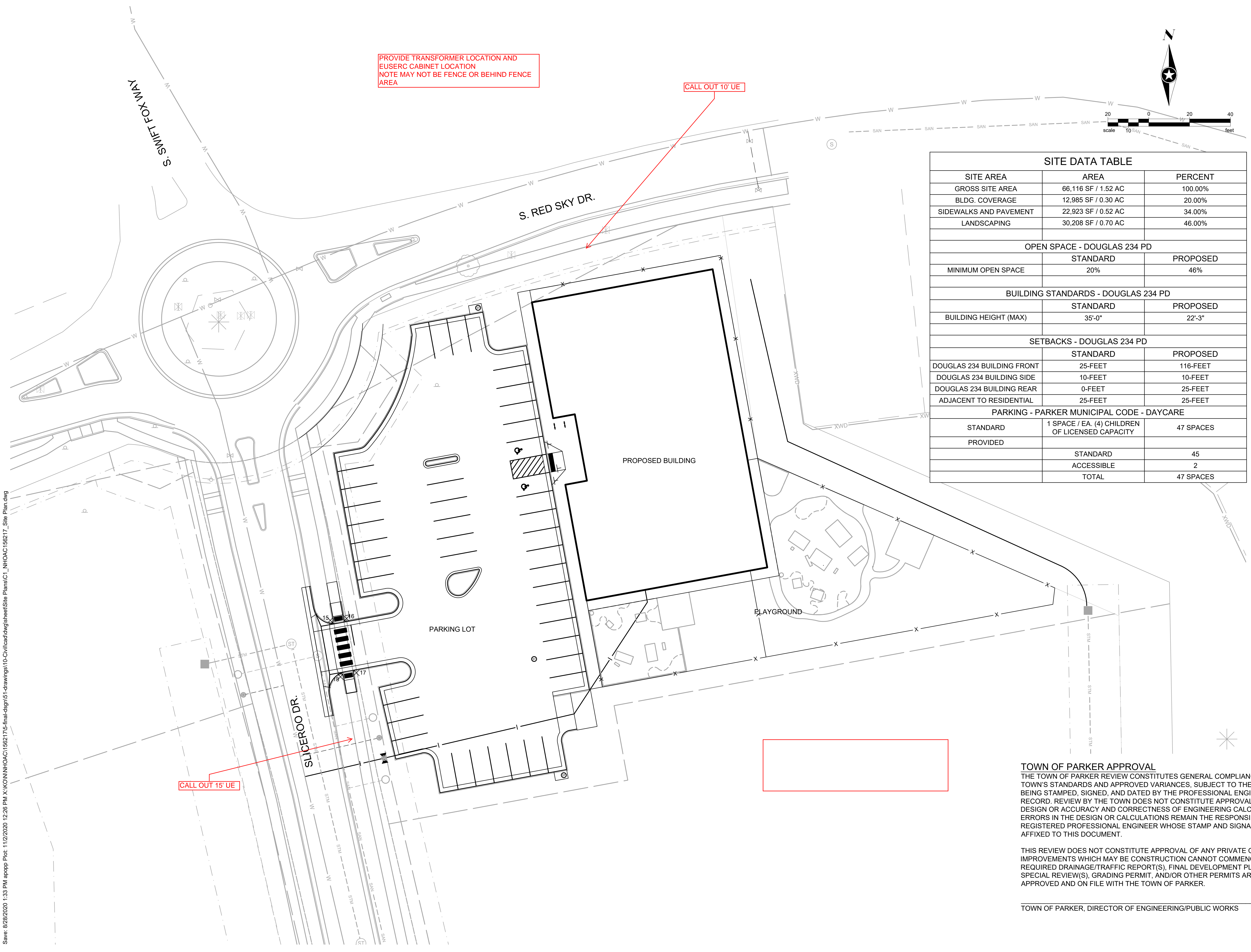
Project Status TOWN REVIEW
Issue Date 8/26/2020

Revision Issue

Rev. #	Description	Date

OVERALL SITE

C1.1



PROVIDE TRANSFORMER LOCATION AND EUSERC CABINET LOCATION
NOTE MAY NOT BE FENCE OR BEHIND FENCE AREA

CALL OUT 10' UE

CALL OUT 15' UE

SITE DATA TABLE		
SITE AREA	AREA	PERCENT
GROSS SITE AREA	66,116 SF / 1.52 AC	100.00%
BLDG. COVERAGE	12,985 SF / 0.30 AC	20.00%
SIDEWALKS AND PAVEMENT	22,923 SF / 0.52 AC	34.00%
LANDSCAPING	30,208 SF / 0.70 AC	46.00%
OPEN SPACE - DOUGLAS 234 PD		
	STANDARD	PROPOSED
MINIMUM OPEN SPACE	20%	46%
BUILDING STANDARDS - DOUGLAS 234 PD		
	STANDARD	PROPOSED
BUILDING HEIGHT (MAX)	35'-0"	22'-3"
SETBACKS - DOUGLAS 234 PD		
	STANDARD	PROPOSED
DOUGLAS 234 BUILDING FRONT	25-FEET	116-FEET
DOUGLAS 234 BUILDING SIDE	10-FEET	10-FEET
DOUGLAS 234 BUILDING REAR	0-FEET	25-FEET
ADJACENT TO RESIDENTIAL	25-FEET	25-FEET
PARKING - PARKER MUNICIPAL CODE - DAYCARE		
STANDARD	1 SPACE / EA. (4) CHILDREN OF LICENSED CAPACITY	47 SPACES
PROVIDED		
	STANDARD	45
	ACCESSIBLE	2
	TOTAL	47 SPACES

TOWN OF PARKER APPROVAL
THE TOWN OF PARKER REVIEW CONSTITUTES GENERAL COMPLIANCE WITH THE TOWN'S STANDARDS AND APPROVED VARIANCES, SUBJECT TO THESE PLANS BEING STAMPED, SIGNED, AND DATED BY THE PROFESSIONAL ENGINEER OF RECORD. REVIEW BY THE TOWN DOES NOT CONSTITUTE APPROVAL OF THE PLAN DESIGN OR ACCURACY AND CORRECTNESS OF ENGINEERING CALCULATIONS. ERRORS IN THE DESIGN OR CALCULATIONS REMAIN THE RESPONSIBILITY OF THE REGISTERED PROFESSIONAL ENGINEER WHOSE STAMP AND SIGNATURE ARE AFFIXED TO THIS DOCUMENT.

THIS REVIEW DOES NOT CONSTITUTE APPROVAL OF ANY PRIVATE ON-SITE IMPROVEMENTS WHICH MAY BE CONSTRUCTION CANNOT COMMENCE UNTIL ALL REQUIRED DRAINAGE/TRAFFIC REPORT(S), FINAL DEVELOPMENT PLAN(S), SPECIAL REVIEW(S), GRADING PERMIT, AND/OR OTHER PERMITS ARE COMPLETE, APPROVED AND ON FILE WITH THE TOWN OF PARKER.

TOWN OF PARKER, DIRECTOR OF ENGINEERING/PUBLIC WORKS DATE

Save: 8/26/2020 1:33 PM appopp Plot: 11/2/2020 12:26 PM X:\KON\NHOAC\156217\5-final-dsgn\51-drawings\10-Civil\card.dwg\sheet\Site Plans\C1_NHOAC156217_Site Plan.dwg

**NOT FOR
CONSTRUCTION**

Owner
New Horizon Academy
3405 Annapolis Lane
N., Suite 100
Plymouth, MN 55447
763.557.1111

Architect
Short Elliott Hendrickson, Inc.
2000 South Colorado Boulevard
Tower One, Suite 6000
Denver, Colorado 80222
720.540.6800

Landscape Architect
Short Elliott Hendrickson, Inc.
10901 Red Circle Drive
Suite 300
Minnetonka, MN 55343
952.912.2600

Civil Engineer
Short Elliott Hendrickson, Inc.
418 West Superior Street
Suite 200
Duluth, MN 55802
218.279.3000

Structural Engineer

Mechanical Engineer

Electrical Engineer

**NEW HORIZON ACADEMY -
CHAMBERS & HESS**
PARKER, CO

This drawing is an instrument of service and shall remain the property of Short Elliott Hendrickson, Inc. (SEH). This drawing and the concepts and ideas contained herein shall not be used, reproduced, revised, or retained without the express written approval of SEH.

Submission or distribution of this drawing to meet official or regulatory requirements or for other purposes in connection with the project is not to be construed as publication or delegation of any of the rights of SEH.

SEH Project: NHOAC 156217
Checked By: KW
Drawn By: VT

Project Status: Issue Date: .
Revision Issue: .
Rev. # Description Date

SEH Project: NHOAC 156217
Checked By: KW
Drawn By: VT

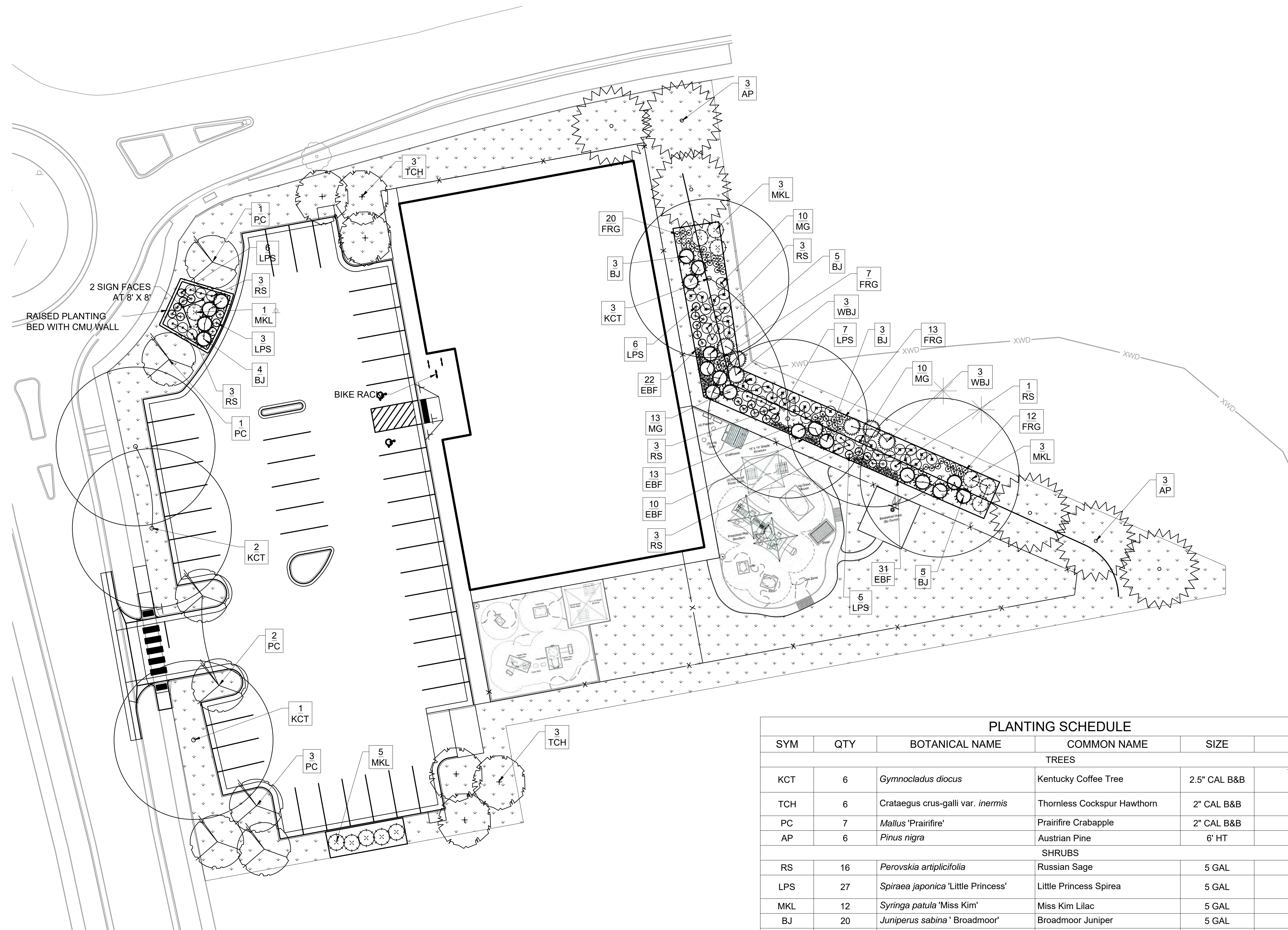
Project Status: Issue Date: .

Revision Issue: .
Rev. # Description Date

LANDSCAPE PLAN

L1.01

PROVIDE TRANSFORMER LOCATION AND EUSERC CABINET LOCATION
NOTE MAY NOT BE FENCE OR BEHIND FENCE AREA



1 LANDSCAPE PLAN
SCALE: 1" = 20'-0"
0' 10' 20' 40' 80'

PLANTING SCHEDULE					
SYM	QTY	BOTANICAL NAME	COMMON NAME	SIZE	NOTES
TREES					
KCT	6	<i>Gymnocladus dioica</i>	Kentucky Coffee Tree	2.5" CAL B&B	>
TCH	6	<i>Crataegus crus-galli</i> var. <i>inermis</i>	Thornless Cockspur Hawthorn	2" CAL B&B	>
PC	7	<i>Mallus 'Prairifire'</i>	Prairifire Crabapple	2" CAL B&B	
AP	6	<i>Pinus nigra</i>	Austrian Pine	6' HT	
SHRUBS					
RS	16	<i>Perovskia artemisiifolia</i>	Russian Sage	5 GAL	
LPS	27	<i>Spiraea japonica</i> 'Little Princess'	Little Princess Spirea	5 GAL	
MKL	12	<i>Syringa patula</i> 'Miss Kim'	Miss Kim Lilac	5 GAL	
BJ	20	<i>Juniperus sabina</i> 'Broadmoor'	Broadmoor Juniper	5 GAL	
WBJ	6	<i>Juniperus scopulorum</i> 'Wichita Blue'	Wichita Blue Juniper	5 GAL	
ORNAMENTAL GRASSES					
FRG	52	<i>Calamagrostis acutiflora</i> 'Karl Foerster'	Karl Foerster Feather Reed Grass	1 GAL	
EBF	76	<i>Festuca glauca</i> 'Elijah Blue'	Elijah Blue Fescue	1 GAL	
MG	33	<i>Miscanthus sinensis</i> 'Gracillimus'	Maiden Grass	1 GAL	

Turf Seed Mixture: Seed mixture to contain native grasses such as Blue Grama and Buffalo Grass

X:\WORK\PROJECTS\156217\LANDSCAPE\156217_LANDSCAPE_PLAN_ANNACAD_156217_L1_2020.10.22.DWG (1/15/2020 4:01 PM)

**NOT FOR
CONSTRUCTION**

Owner
New Horizon Academy
3405 Annapolis Lane
N., Suite 100
Plymouth, MN 55447
763.557.1111

Architect
Short Elliott Hendrickson, Inc.
2000 South Colorado Boulevard
Tower One, Suite 6000
Denver, Colorado 80222
720.540.6800

Landscape Architect
Short Elliott Hendrickson, Inc.
10501 Red Circle Drive
Suite 300
Minnetonka, MN 55343
952.912.2600

Civil Engineer
Short Elliott Hendrickson, Inc.
418 West Superior Street
Suite 200
Duluth, MN 55802
218.279.3000

Structural Engineer

Mechanical Engineer

Electrical Engineer



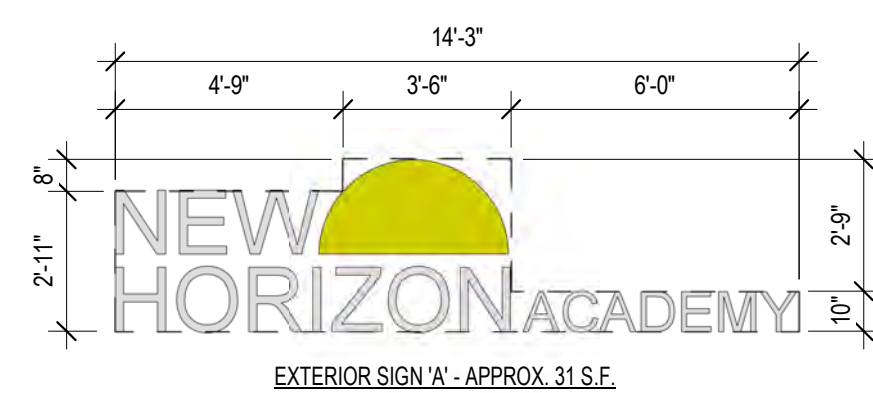
1 EAST ELEVATION
3/16" = 1'-0"



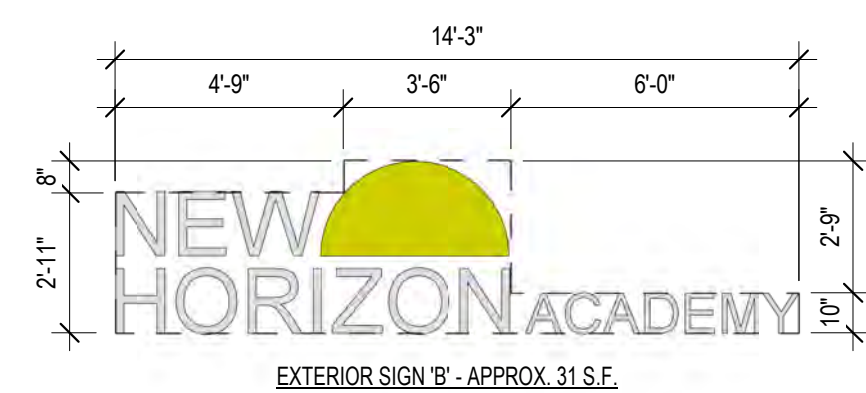
2 NORTH ELEVATION
3/16" = 1'-0"

ELEVATION KEY NOTES #

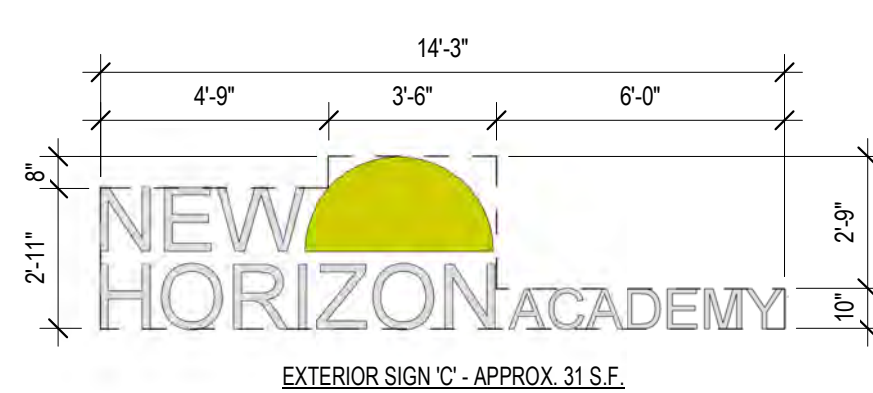
1. STONE VENEER - SOUTHERN LEDGESTONE 'CHARDONNAY' BY CULTURED STONE
2. WOOD SHAKE SIDING - HARDIESHINGLE - STRAIGHT EDGE PANEL 'NAVAJO BEIGE' BY JAMES HARDIE
3. HORIZONTAL SIDING - HARDIEPLANK - SMOOTH - 'KHAKI BROWN' BY JAMES HARDIE
4. BOARD AND BATTEN SIDING - HARDIEPANEL VERTICAL SIDING - SMOOTH - 'COBBLESTONE' WITH HARDIETRIM BOARD - SMOOTH BATTEN BOARD - 'COBBLESTONE' BY JAMES HARDIE.
5. PREFINISHED METAL COPING - 'WHITE'
6. ALUMINUM STOREFRONT FRAMING / GLAZING ASSEMBLY - TINTED INSULATED LOW-E GLASS WITH 'DARK BRONZE' ANODIZED ALUMINUM FRAMES
7. ALUMINUM DOOR / GLAZING ASSEMBLY - TINTED INSULATED LOW-E GLASS WITH 'DARK BRONZE' ANODIZED ALUMINUM FRAMES
8. HOLLOW METAL DOOR AND FRAME - PAINT TO MATCH 'DARK BRONZE'.
9. ARCHITECTURAL PRECAST CONCRETE SILL
10. EXTERIOR LED SIGNAGE. SEE ELECTRICAL DRAWINGS FOR FURTHER INFORMATION.
11. DECORATIVE COMPOSITE WOOD CORNICE - PAINT 'WHITE'
12. PREFINISHED METAL SCUPPER AND DOWNSPOUT - 'DARK BRONZE'. CONNECT DOWNSPOUT TO UNDERGROUND STORM SEWER. SEE CIVIL DRAWINGS FOR FURTHER INFORMATION.
13. LIGHT FIXTURE. SEE ELECTRICAL DRAWINGS FOR FURTHER INFORMATION.
14. 1x COMPOSITE WOOD TRIM - PAINT 'WHITE'
15. 'BLACK' FABRIC AWNING.
16. DASHED LINE DENOTES TOP OF ROOF BEYOND
17. DECORATIVE WOOD DENTAL - PAINT 'WHITE'.
18. ARCHITECTURAL PRECAST CONCRETE COLUMN CAP.
19. 8x8 COMPOSITE WOOD COLUMN. SEE STRUCTURAL FOR FURTHER INFORMATION.
20. 4x12 COMPOSITE WOOD BEAM.
21. 1x COMPOSITE WOOD TRIM - PAINT 'BLUE'
22. WALL MOUNTED CT CABINET - PAINT TO MATCH ADJACENT FINISH
23. ELECTRICAL METER - PAINT TO MATCH ADJACENT FINISH



EXTERIOR SIGN 'A' - APPROX. 31 S.F.



EXTERIOR SIGN 'B' - APPROX. 31 S.F.



EXTERIOR SIGN 'C' - APPROX. 31 S.F.

3 EXTERIOR SIGN SCHEDULE
1/4" = 1'-0"

NEW HORIZON ACADEMY -
DOUGLAS XXX FILING, NO. X
PARKER, CO

This drawing is an instrument of service and shall remain the property of Short Elliott Hendrickson, Inc. (SEH). This drawing and the concepts and ideas contained herein shall not be used, reproduced, revised, or retained without the express written approval of SEH.

Submission or distribution of this drawing to meet official or regulatory requirements or for other purposes in connection with the project is not to be construed as publication in derogation of any of the rights of SEH.

SEH Project: NHOAC 156217
Checked By:
Drawn By:

Project Status: TOWN REVIEW
Issue Date: 8/26/2020

Revision Issue

Rev. # Description Date

EXTERIOR ELEVATIONS

**NOT FOR
CONSTRUCTION**

Owner
New Horizon Academy
3405 Annapolis Lane
N., Suite 100
Plymouth, MN 55447
763.557.1111

Architect
Short Elliott Hendrickson, Inc.
2000 South Colorado Boulevard
Tower One, Suite 6000
Denver, Colorado 80222
720.540.6800

Landscape Architect
Short Elliott Hendrickson, Inc.
10901 Red Circle Drive
Suite 300
Minnetonka, MN 55343
952.912.2600

Civil Engineer
Short Elliott Hendrickson, Inc.
418 West Superior Street
Suite 200
Duluth, MN 55802
218.279.3000

Structural Engineer

Mechanical Engineer

Electrical Engineer

New Horizon Academy
**NEW HORIZON ACADEMY -
DOUGLAS XXX FILING, NO. X**
 PARKER, CO

This drawing is an instrument of service and shall remain the property of Short Elliott Hendrickson, Inc. (SEH). This drawing and the concepts and ideas contained herein shall not be used, reproduced, revised, or retained without the express written approval of SEH.

Submission or distribution of this drawing to meet official or regulatory requirements or for other purposes in connection with the project is not to be construed as publication in derogation of any of the rights of SEH.

SEH Project: NHOAC 156217
Checked By:
Drawn By:

Project Status: TOWN REVIEW
Issue Date: 8/26/2020

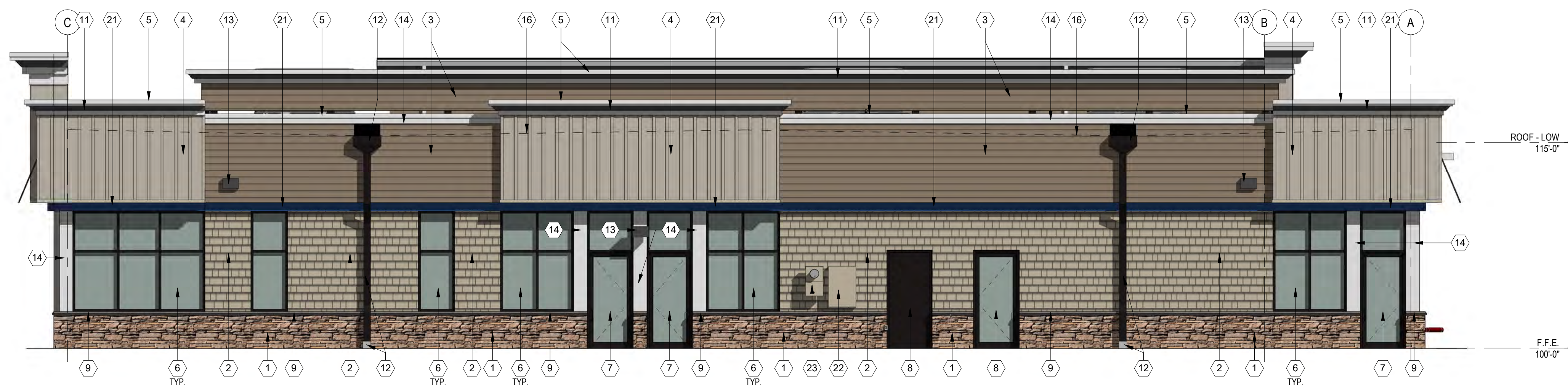
Revision Issue

Rev. #	Description	Date

EXTERIOR ELEVATIONS



1 WEST ELEVATION
3/16" = 1'-0"

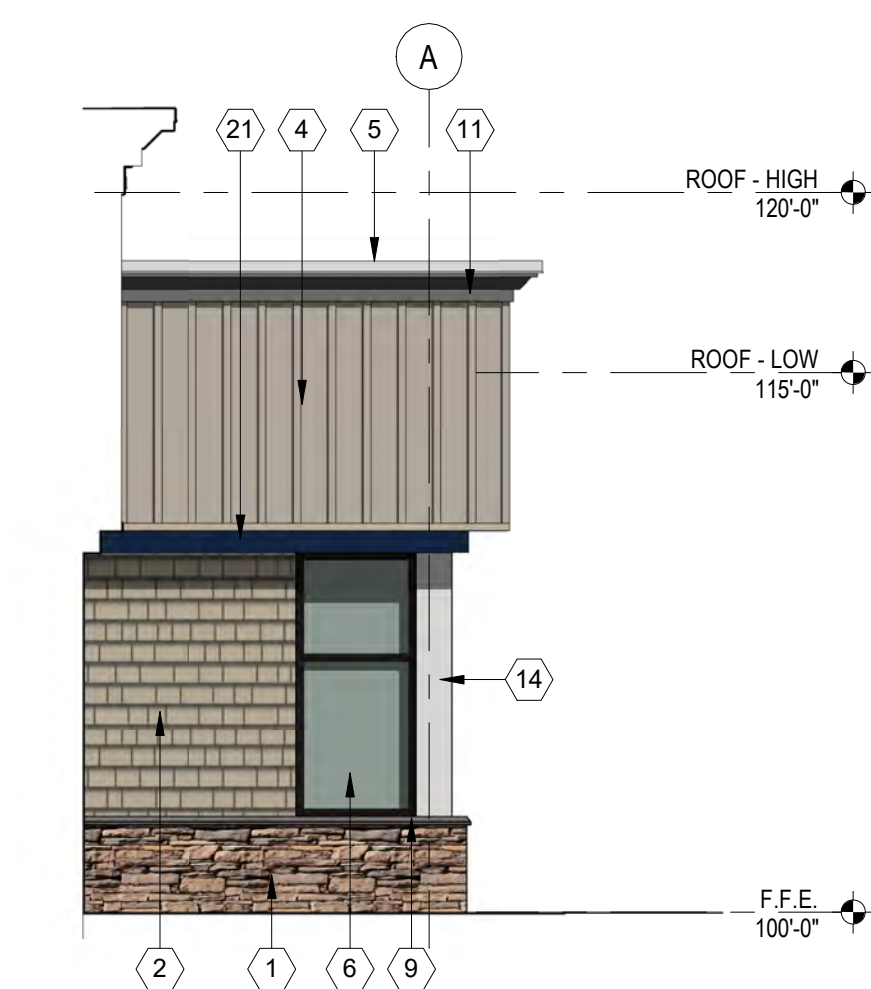


2 SOUTH ELEVATION
3/16" = 1'-0"

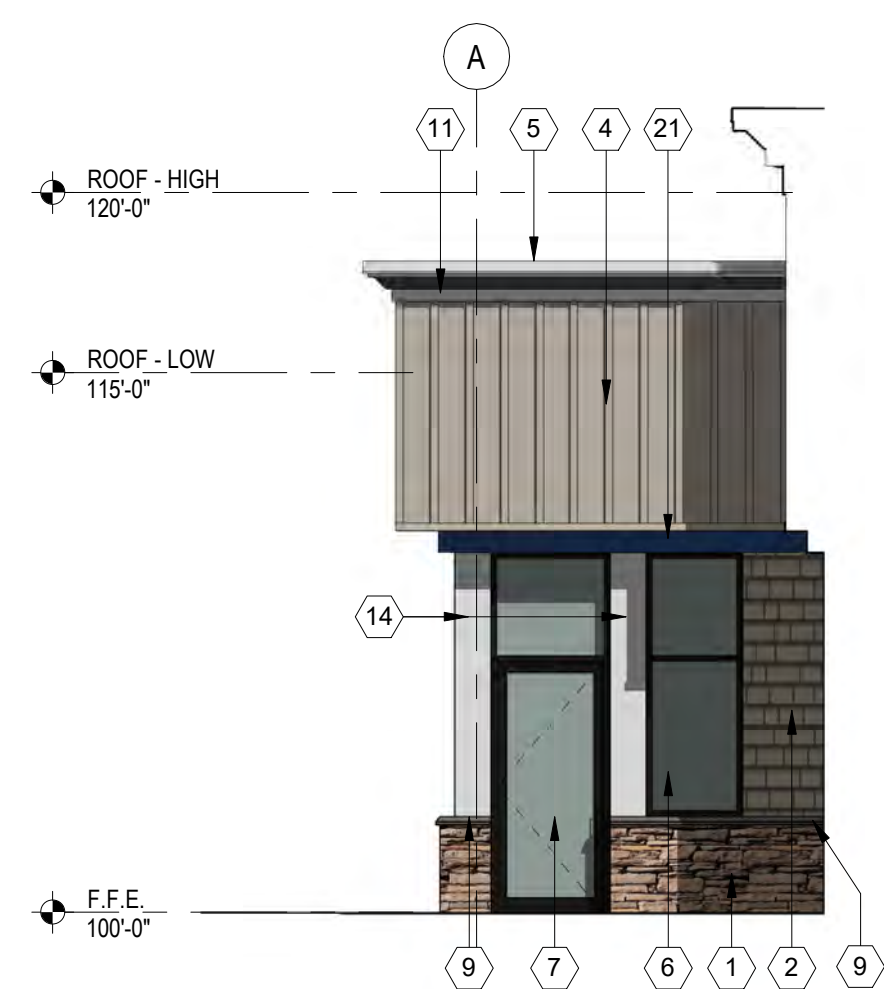
ELEVATION KEY NOTES

- STONE VENEER - SOUTHERN LEDGESTONE 'CHARDONNAY' BY CULTURED STONE
- WOOD SHAKE SIDING - HARDIESHINGLE - STRAIGHT EDGE PANEL 'NAVAJO BEIGE' BY JAMES HARDIE
- HORIZONTAL SIDING - HARDIEPLANK - SMOOTH - 'KHAKI BROWN' BY JAMES HARDIE
- BOARD AND BATTEN SIDING - HARDIEPANEL VERTICAL SIDING - SMOOTH - 'COBBLESTONE' WITH HARDIETRIM BOARD - SMOOTH BATTEN BOARD - 'COBBLESTONE' BY JAMES HARDIE.
- PREFINISHED METAL COPING - 'WHITE'
- ALUMINUM STOREFRONT FRAMING / GLAZING ASSEMBLY - TINTED INSULATED LOW-E GLASS WITH 'DARK BRONZE' ANODIZED ALUMINUM FRAMES
- ALUMINUM DOOR / GLAZING ASSEMBLY - TINTED INSULATED LOW-E GLASS WITH 'DARK BRONZE' ANODIZED ALUMINUM FRAMES
- HOLLOW METAL DOOR AND FRAME - PAINT TO MATCH 'DARK BRONZE'
- ARCHITECTURAL PRECAST CONCRETE SILL
- EXTERIOR LED SIGNAGE. SEE ELECTRICAL DRAWINGS FOR FURTHER INFORMATION.
- DECORATIVE COMPOSITE WOOD CORNICE - PAINT 'WHITE'
- PREFINISHED METAL SCUPPER AND DOWNSPOUT - 'DARK BRONZE'. CONNECT DOWNSPOUT TO UNDERGROUND STORM SEWER. SEE CIVIL DRAWINGS FOR FURTHER INFORMATION.
- LIGHT FIXTURE. SEE ELECTRICAL DRAWINGS FOR FURTHER INFORMATION.
- 1x COMPOSITE WOOD TRIM - PAINT 'WHITE'
- 'BLACK' FABRIC AWNING.
- DASHED LINE DENOTES TOP OF ROOF BEYOND
- DECORATIVE WOOD DENTAL - PAINT 'WHITE'.
- ARCHITECTURAL PRECAST CONCRETE COLUMN CAP.
- 8x8 COMPOSITE WOOD COLUMN. SEE STRUCTURAL FOR FURTHER INFORMATION.
- 4x12 COMPOSITE WOOD BEAM.
- 1x COMPOSITE WOOD TRIM - PAINT 'BLUE'
- WALL MOUNTED CT CABINET - PAINT TO MATCH ADJACENT FINISH
- ELECTRICAL METER - PAINT TO MATCH ADJACENT FINISH

EUSERC CABINET LOCATION
 NOTE MAY NOT BE FENCE OR BEHIND FENCE AREA



3 SOUTH ENTRY ELEVATION
3/16" = 1'-0"



4 NORTH ENTRY ELEVATION
3/16" = 1'-0"



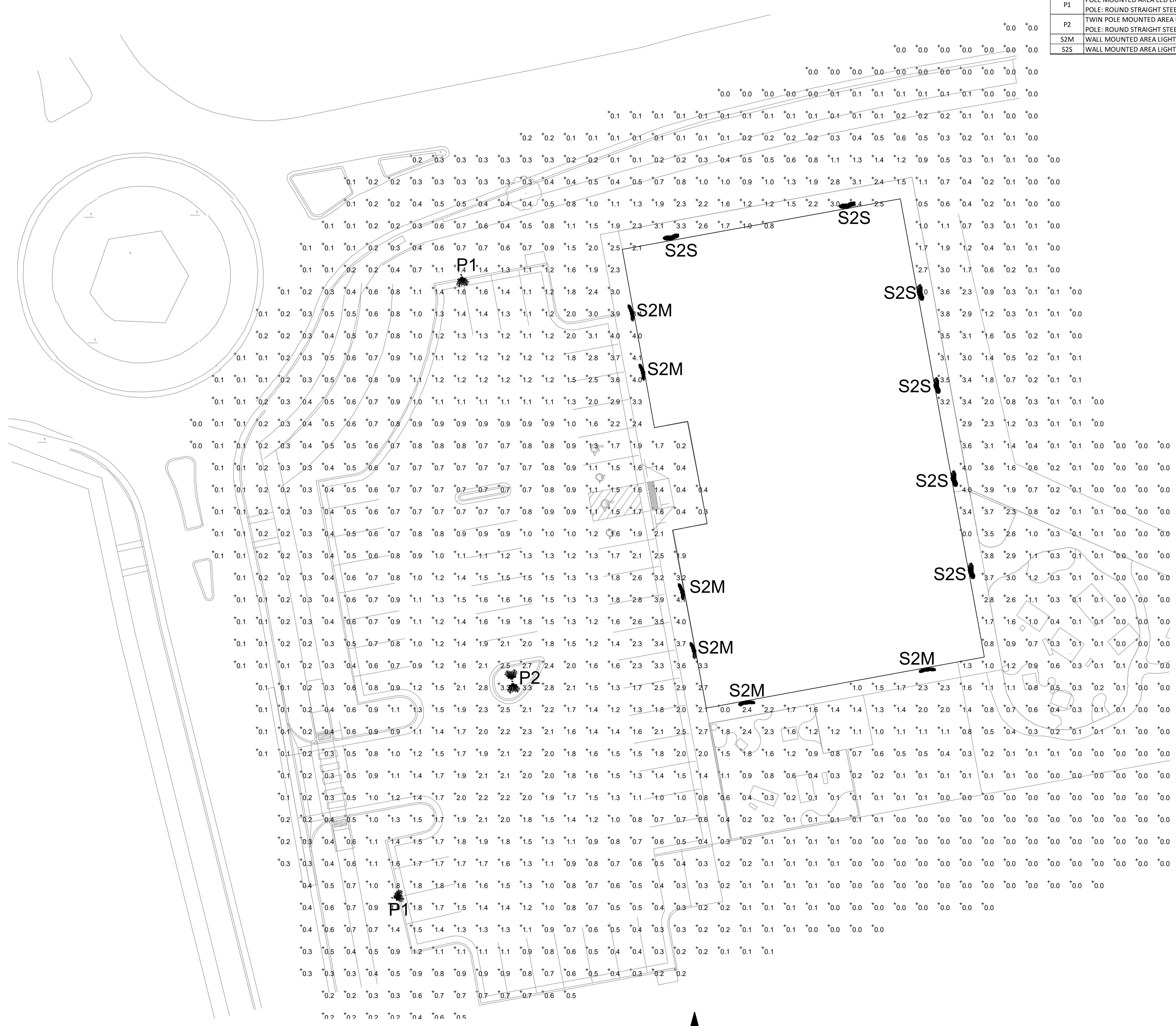
Building a Better World for All of Us®

NOT FOR CONSTRUCTION

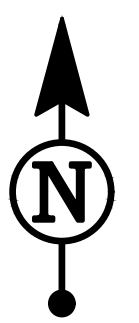
TYPE	DESCRIPTION	CATALOG #
P1	POLE MOUNTED AREA LED LIGHT FIXTURE, 4000K, TYPE TFTM FORWARD THROW DISTRIBUTION	LITHONIA LIGHTING: DSX1-LED-P2-40K-TFTM
	POLE: ROUND STRAIGHT STEEL, DARK BRONZE FINISH	POLE: LITHONIA LIGHTING RSS, DDBXD
P2	TWIN POLE MOUNTED AREA LED LIGHT FIXTURES, 4000K, TYPE TFTM FORWARD THROW DISTRIBUTION	LITHONIA LIGHTING: DSX1-LED-P2-40K-TFTM
	POLE: ROUND STRAIGHT STEEL, DARK BRONZE FINISH	POLE: LITHONIA LIGHTING RSS, DDBXD
S2M	WALL MOUNTED AREA LIGHT FIXTURE, 4000K, TYPE 2 MEDIUM DISTRIBUTION.	LITHONIA LIGHTING: DSXW1-LED-10C-700-40K-T2M
S2S	WALL MOUNTED AREA LIGHT FIXTURE, 4000K, TYPE 2 SHORT DISTRIBUTION.	LITHONIA LIGHTING: DSXW1-LED-10C-700-40K-T2S

PHOTOMETRIC SITE PLAN GENERAL NOTES:

A. ALL EXTERIOR LIGHT FIXTURES SHALL BE FULL CUTOFF.



1 PHOTOMETRIC SITE PLAN Scale: 1/16" = 1'-0"



Owner
 New Horizon Academy
 3405 Annapolis Lane
 N., Suite 100
 Plymouth, MN 55447
 763.557.1111

Architect
 Short Elliott Hendrickson, Inc.
 2000 South Colorado Boulevard
 Tower One, Suite 6000
 Denver, Colorado 80222
 720.540.6800

Landscape Architect
 Short Elliott Hendrickson, Inc.
 10901 Red Circle Drive
 Suite 300
 Minnetonka, MN 55343
 952.912.2600

Civil Engineer
 Short Elliott Hendrickson, Inc.
 418 West Superior Street
 Suite 200
 Duluth, MN 55802
 218.279.3000

Structural Engineer

Mechanical Engineer

Electrical Engineer

New Horizon Academy
**NEW HORIZON ACADEMY -
 CHAMBERS & HESS**
 PARKER, CO

This drawing is an instrument of service and shall remain the property of Short Elliott Hendrickson, Inc. (SEH). This drawing and the concepts and ideas contained herein shall not be used, reproduced, revised, or retained without the express written approval of SEH.

Submission or distribution of this drawing to meet official or regulatory requirements or for other purposes in connection with the project is not to be construed as a publication in derogation of any of the rights of SEH.

Copyright © 2020
 Short Elliott Hendrickson, Inc.
 All Rights Reserved

SEH Project: NHOAC 156217
 Checked By: KW
 Drawn By: VT

Project Status Issue Date

Revision Issue
 Rev. # Description Date