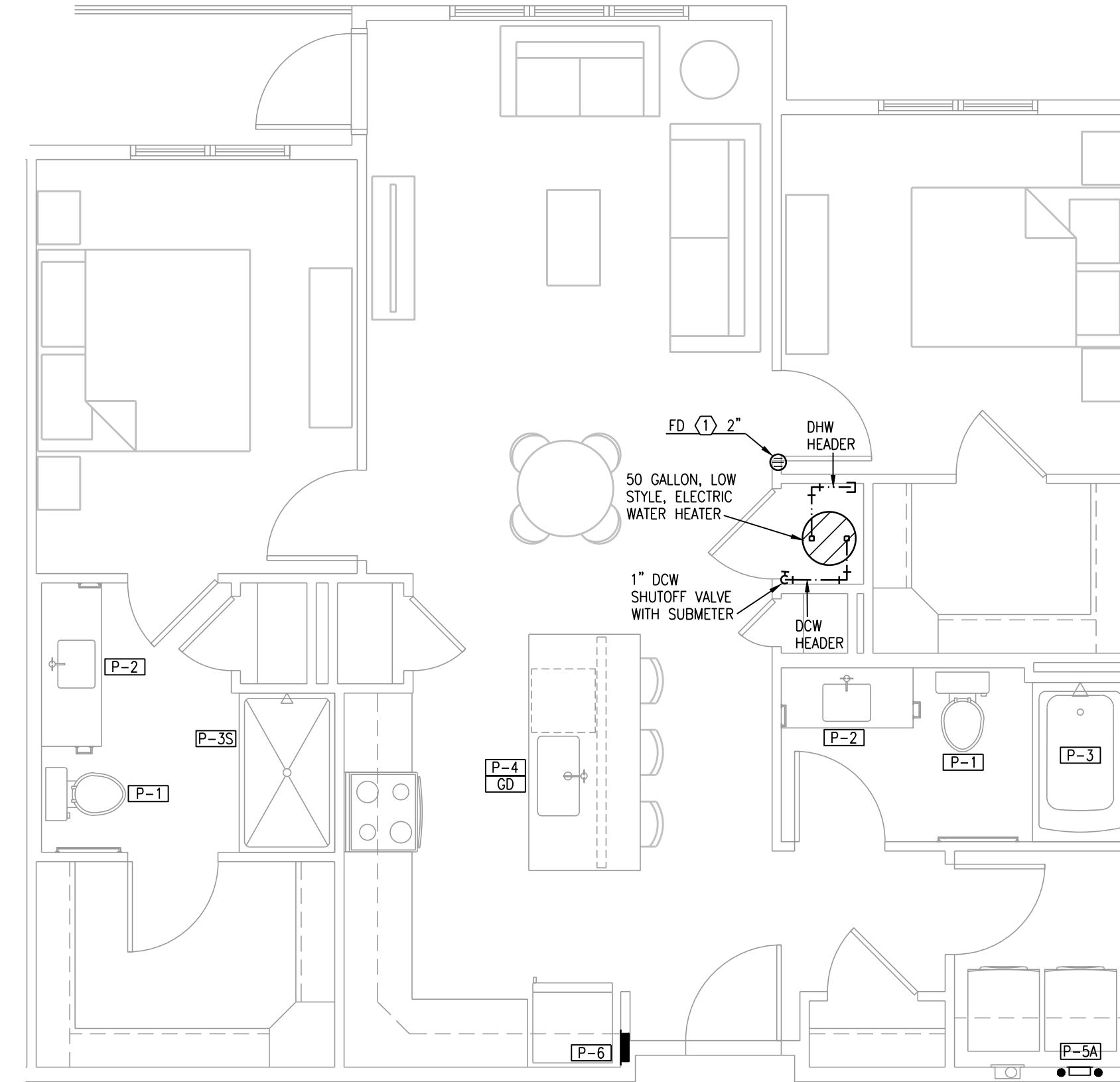
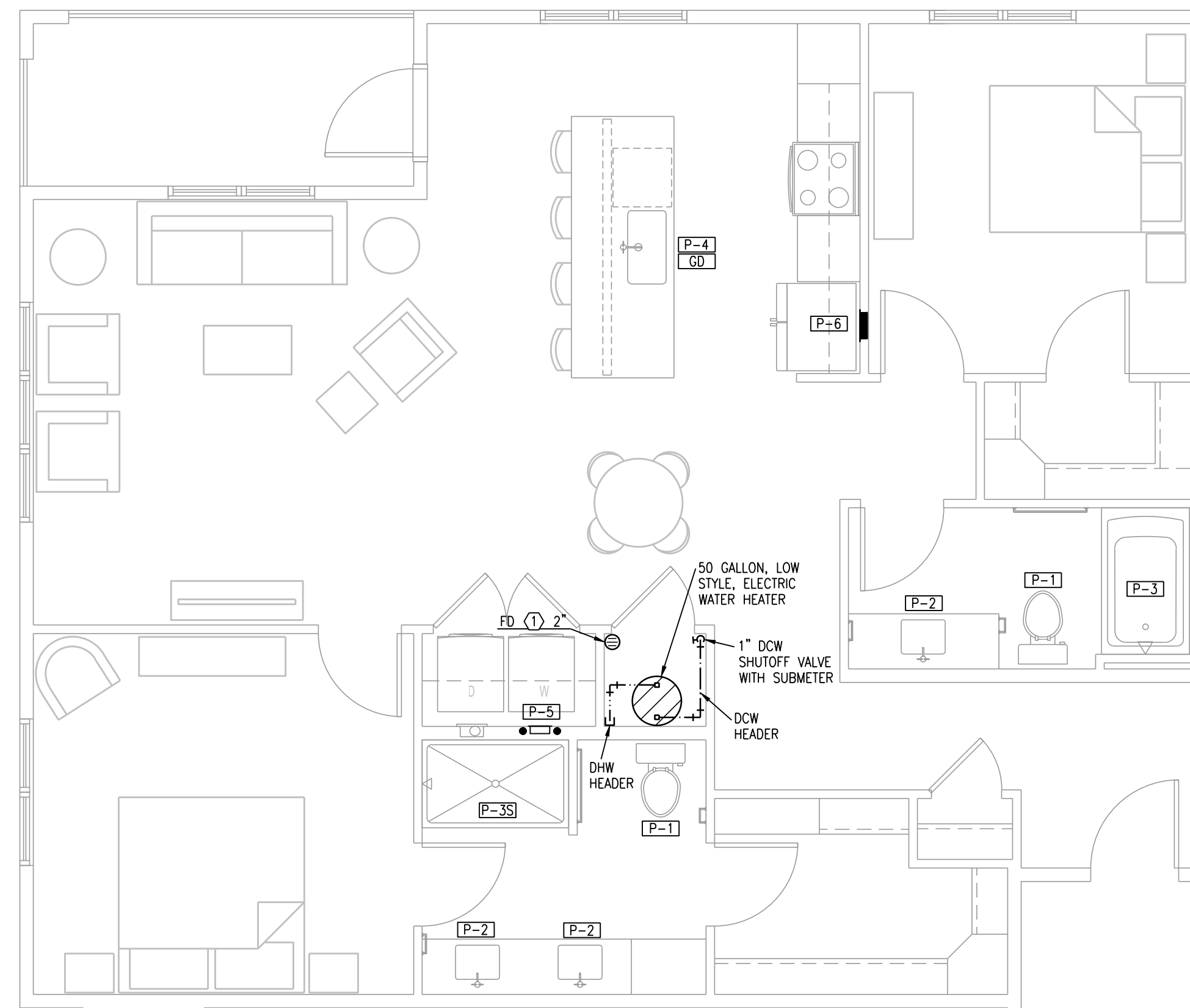


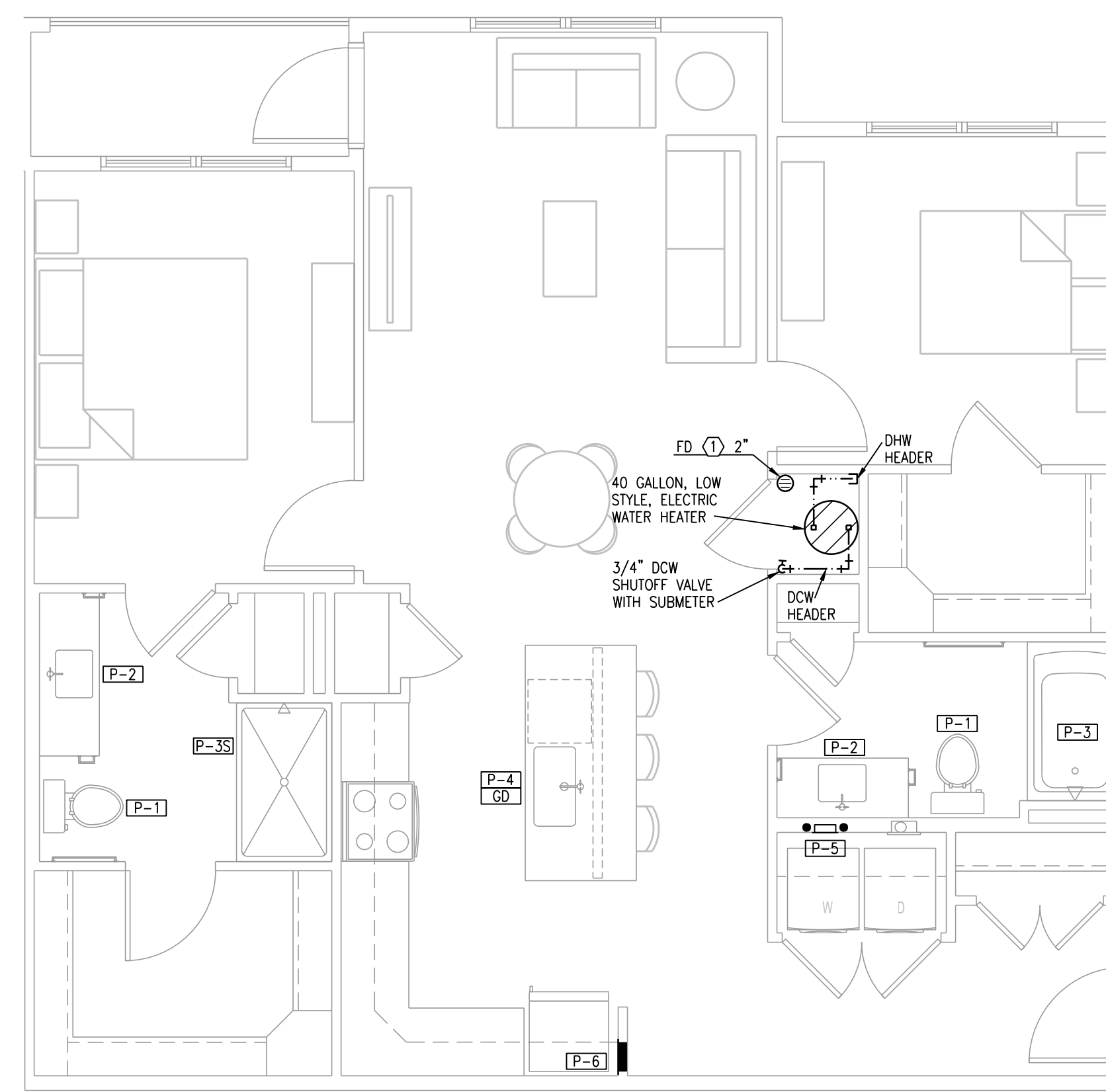
1 TYPICAL UNIT PLAN - A5
1/4"=1'-0" PLUMBING



2 TYPICAL UNIT PLAN - B1
1/4"=1'-0" PLUMBING



3 TYPICAL UNIT PLAN - B2
1/4"=1'-0" PLUMBING



4 TYPICAL UNIT PLAN - B3
1/4"=1'-0" PLUMBING

- NOTES:
- ROUTE TOP FLOOR SUPPLY PLUMBING IN CEILING BELOW. NO SUPPLY IN ATTIC.
 - PROVIDE AIR CHAMBERS ON P-4, P-5, AND P-6.
 - CONNECT DISHWASHERS, DISPOSERS, ICE MAKERS, WASHERS.
 - SUPPLY PIPING IS 1/2" UNLESS NOTED OTHERWISE.
 - PROVIDE FLOOR DRAIN ADJACENT WATER HEATER.
 - INSULATE FIRST 8 FT OF HW PIPING.
 - PROVIDE DRAIN PAN BELOW WASHING MACHINES WITH 3/4" DRAIN TO FLOOR DRAIN. PROVIDE AIR GAP.
 - PROVIDE 28"Ø DRAIN PAN BELOW WATER HEATER WITH 3/4" DRAIN TO FLOOR DRAIN. PROVIDE AIR GAP.
 - ALL DRAINS ON ADA KITCHEN SINKS SHOULD BE BACK OUTLET AT REAR OF SINK FOR ADA KNEE CLEARANCES.
 - NO EXPOSED PVC PIPING ALLOWED IN AHU/WH CLOSET. EITHER WRAP WITH INSULATION OR PROVIDE COPPER DRAIN PIPING.
 - ALL FLOOR DRAINS AT LAUNDRY AREAS AND IN MECHANICAL CLOSETS SHALL HAVE TRAP SEALS EQUAL TO RECTOR SEAL "SURE SEAL" #SS2009V.

- LEGEND:
- 1/2" DCW BACK TO DCW PEX HEADER IN CLOSET.
 - 1/2" DHW BACK TO DHW PEX HEADER IN CLOSET.
 - 3/4" DCW BACK TO DCW PEX HEADER IN CLOSET.
 - 3/4" DHW BACK TO DHW PEX HEADER IN CLOSET.

SEBREE Architects, Inc.
97 Dover Street, Suite 400, Avon, Indiana 46235-7356
Phone (317) 272-7800 FAX (317) 272-7808
Web Site: <http://www.sebreearchitects.com>

LS&A
Lester Sommers & Associates, P.A.
CONSULTING ENGINEERS
3639 SW Summerfield Drive, Suite A
Topeka, Kansas 66614-3074
8625 College Boulevard, Suite 102
Overland Park, Kansas 66210
Telephone: (785) 233-3232
Email: lsaps@lsaps.com
LSA PROJECT NO. 2007017

**PARKER + PINE APTS
BUILDING TYPE I
XX STREET
PARKER, COLORADO**

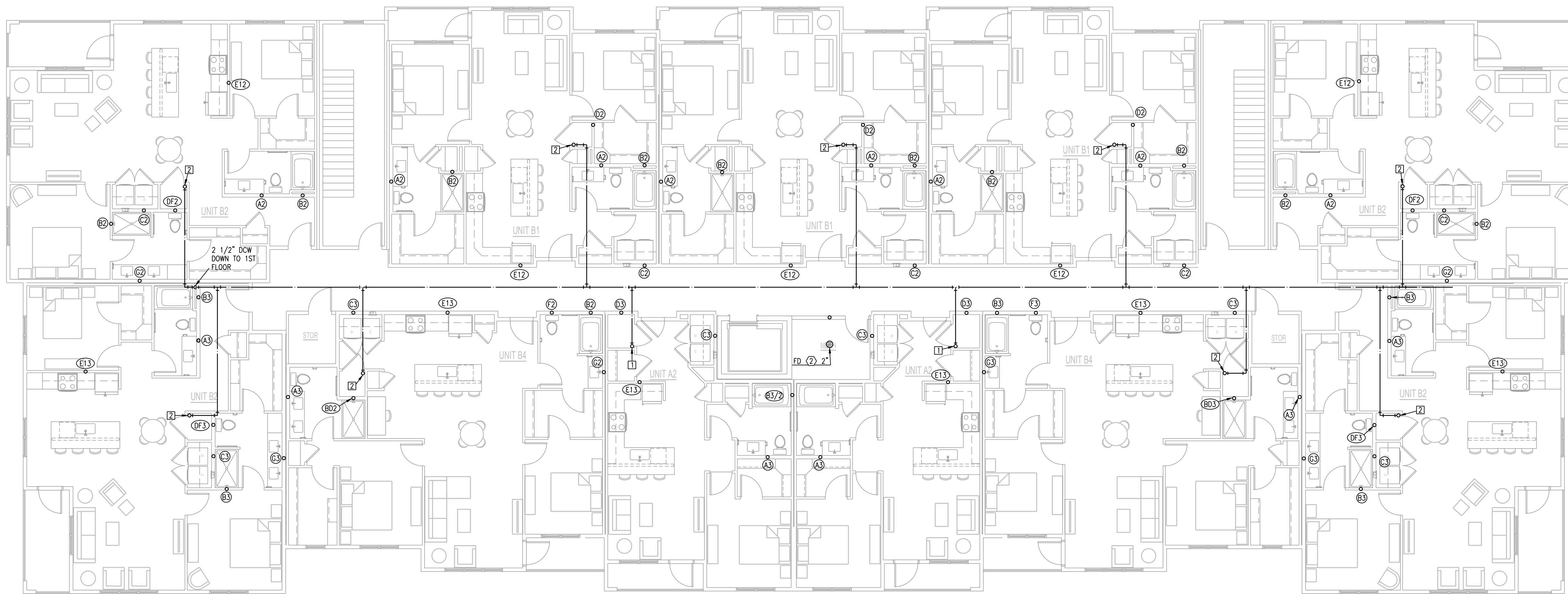
**NOT FOR
CONSTRUCTION**
CERTIFIED BY

NO.	DATE	BY	DESCRIPTION
	11.03.20		OWNER CHECK SET

PROJECT NO.	20013	CHECKED BY	
-------------	-------	------------	--

TYPICAL UNIT PLANS -
PLUMBING

BUILDING TYPE I
1P202



2 BUILDING TYPE II, SECOND FLOOR PLAN
 1/8"=1'-0" PLUMBING NORTH

- NOTES:**
- ALL 2" AND 3" WASTE PIPE AT 1/4"/FT SLOPE. 4" AND GREATER MAY BE AT 1/8"/FT SLOPE.
 - WASTE/VENT PIPING IS 2" UNLESS NOTED OTHERWISE.
 - SEE WASTE/VENT RISERS FOR SIZING INDIVIDUAL RUN-OUTS.
 - BRANCHES TO WALL HYDRANTS ARE 3/4" AND HAVE ISOLATION VALVE (ABOVE CEILING BEHIND ACCESS PANEL IF NEEDED).
 - FIRE SPRINKLER SYSTEM TO BE PROVIDED FOR ENTIRE BUILDING PER SPECS AND NFPA 13R. THIS INCLUDES A GLYCOL OR DRY TYPE SYSTEM FOR GARAGES AND PATIO BALCONIES AND CLASS 1 MANUAL STANDPIPE SYSTEM FOR STAIRS. NO PIPE SHALL BE EXPOSED TO EXTERIOR TEMPERATURES.
 - ALL CORRIDOR AND FLOOR PENETRATIONS SHALL BE FIRE CAULKED PER A U.L. DETAIL.
 - ALL VENTS THRU ROOF (VTR) ARE 3" UNLESS NOTED OTHERWISE. HORIZONTAL VENT PIPING SHOWN ON THIRD FLOOR PLAN OCCURS ON FOURTH FLOOR ONLY.
 - ALL FLOOR DRAINS ARE TYPE "1", 2" UNLESS NOTED OTHERWISE.
 - PROVIDE ISOLATION VALVE IN DCW PIPING IN CORRIDOR ON SECOND FLOOR AT EACH APARTMENT STACK BRANCH TAP. PROVIDE FIRE RATED ACCESS PANEL AT EACH VALVE.
 - ALL DISHWASHER DRAINS SHALL BE CONNECTED TO THE KITCHEN SINK WASTE WITH AN AIR GAP IN ACCORDANCE WITH IPC B02.1.6

- LEGEND:**
- ① CLASS 1 MANUAL STANDPIPE WITH VALVE.

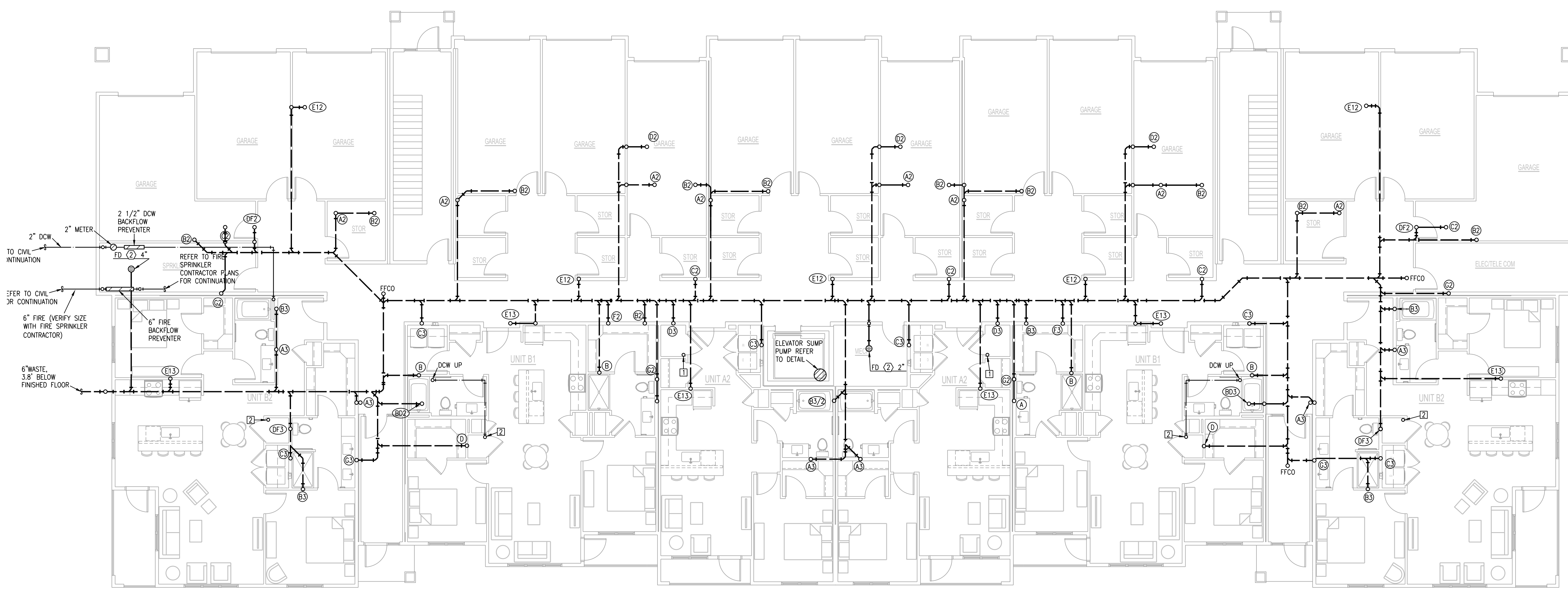
- PLUMBING SYMBOLS LIST:**
- WASTE LINE ABOVE EARTH (W).
 - FFCO ○ FLUSH FLOOR CLEAN OUT.
 - FWCO ◐ FLUSH WALL CLEAN OUT.
 - ⊙ FLOOR DRAIN.
 - ⊙-○ EXPOSED CLEAN OUT AT RISER BASE.
 - VENT LINE.
 - DOMESTIC COLD WATER SUPPLY (DCW).
 - DOMESTIC HOT WATER SUPPLY (DHW).
 - ⊕ RISE AND DROP IN PIPE.
 - REDUCER.
 - ⊕ CHECK VALVE.
 - ⊕ STOP VALVE.
 - ⊕ WH WALL HYDRANT.
 - F FIRE LINE/STANDPIPE.
 - W WATER.
 - ⊕ DENOTES DWV RISER DESIGNATION.
 - ⊕ DENOTES WATER SUPPLY RISER DESIGNATION.

SEBREE Architects, Inc.
 97 Dover Street, Suite 400, Avon, Indiana 46123-7356
 Phone (317) 272-7800 FAX (317) 272-7808
 Web Site: <http://www.sebreearchitects.com>

LS&A
 L. Sumner Sommers & Associates, P.A.
 CONSULTING ENGINEERS
 3630 SW Summerfield Drive, Suite A
 Topeka, Kansas 66614-3874
 8625 College Boulevard, Suite 102
 Overland Park, Kansas 66210
 Telephone: (785) 233-2332
 Email: lsapa@lsapa.com
 LSA PROJECT NO. 2007017

**PARKER + PINE APTS
 BUILDING TYPE II**
 XX STREET
 PARKER, COLORADO

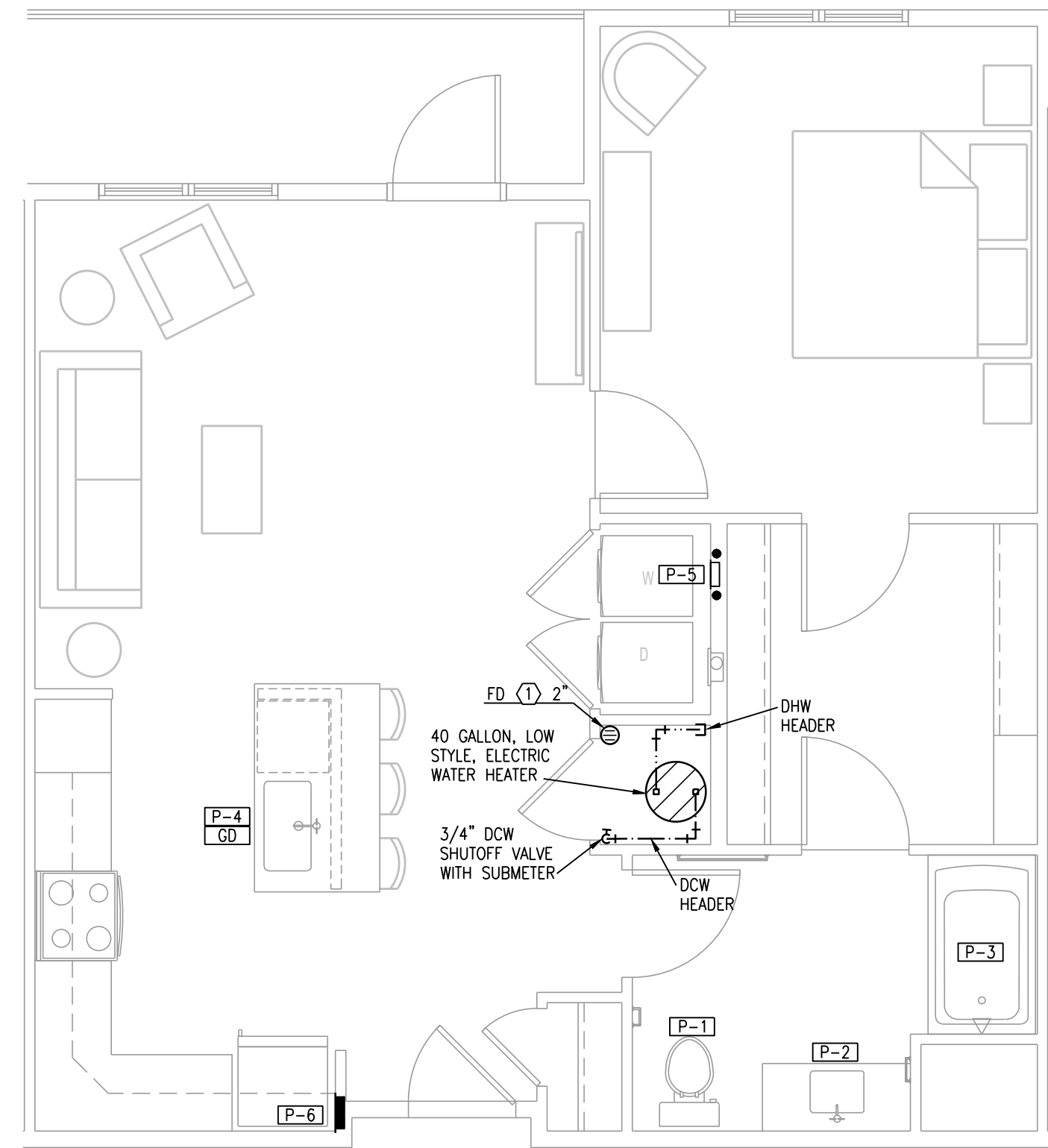
NOT FOR CONSTRUCTION
 CERTIFIED BY



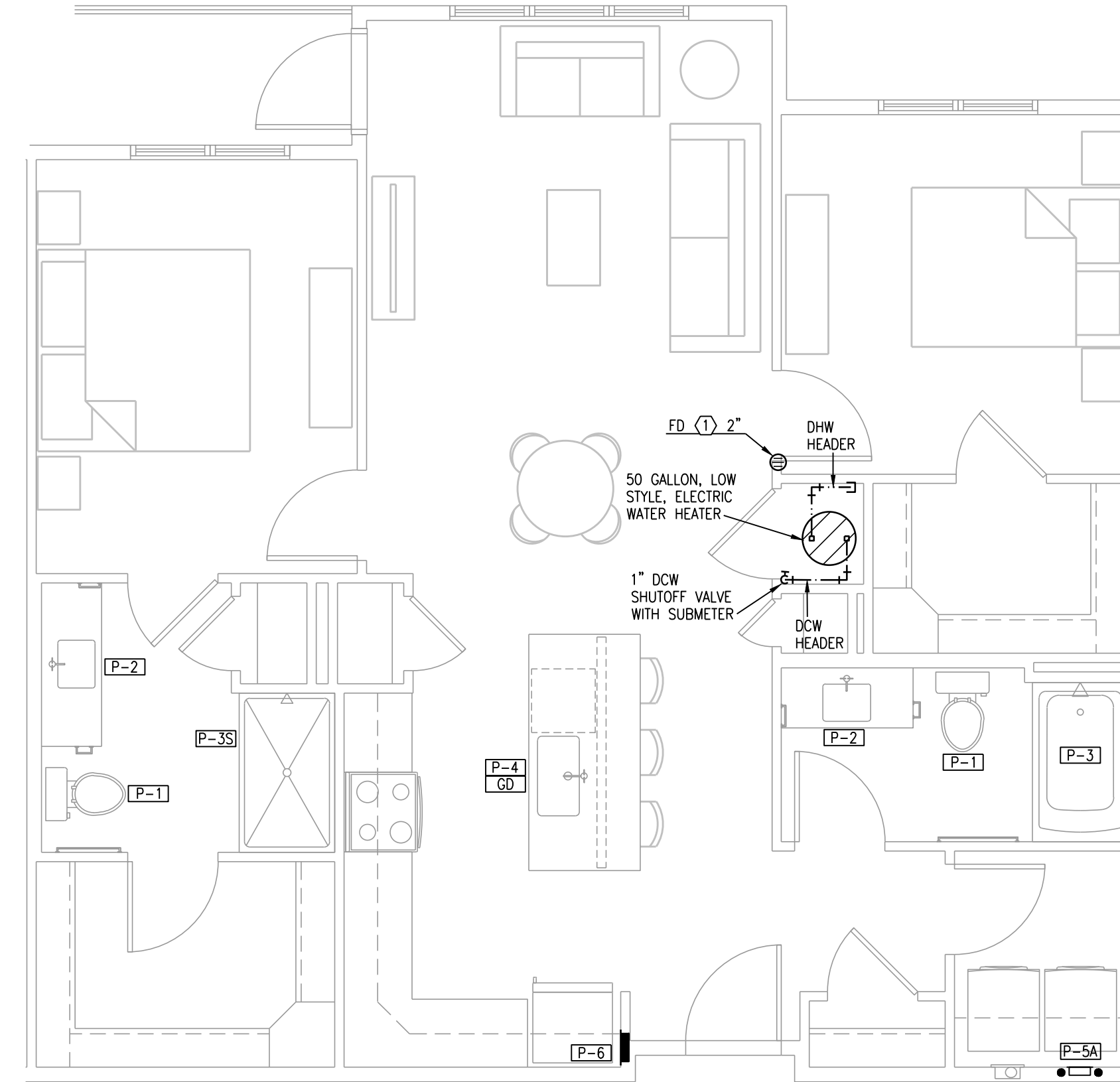
1 BUILDING TYPE II, FIRST FLOOR PLAN
 1/8"=1'-0" PLUMBING NORTH

NO.	DATE	BY	DESCRIPTION
	11.03.20		OWNER CHECK SET

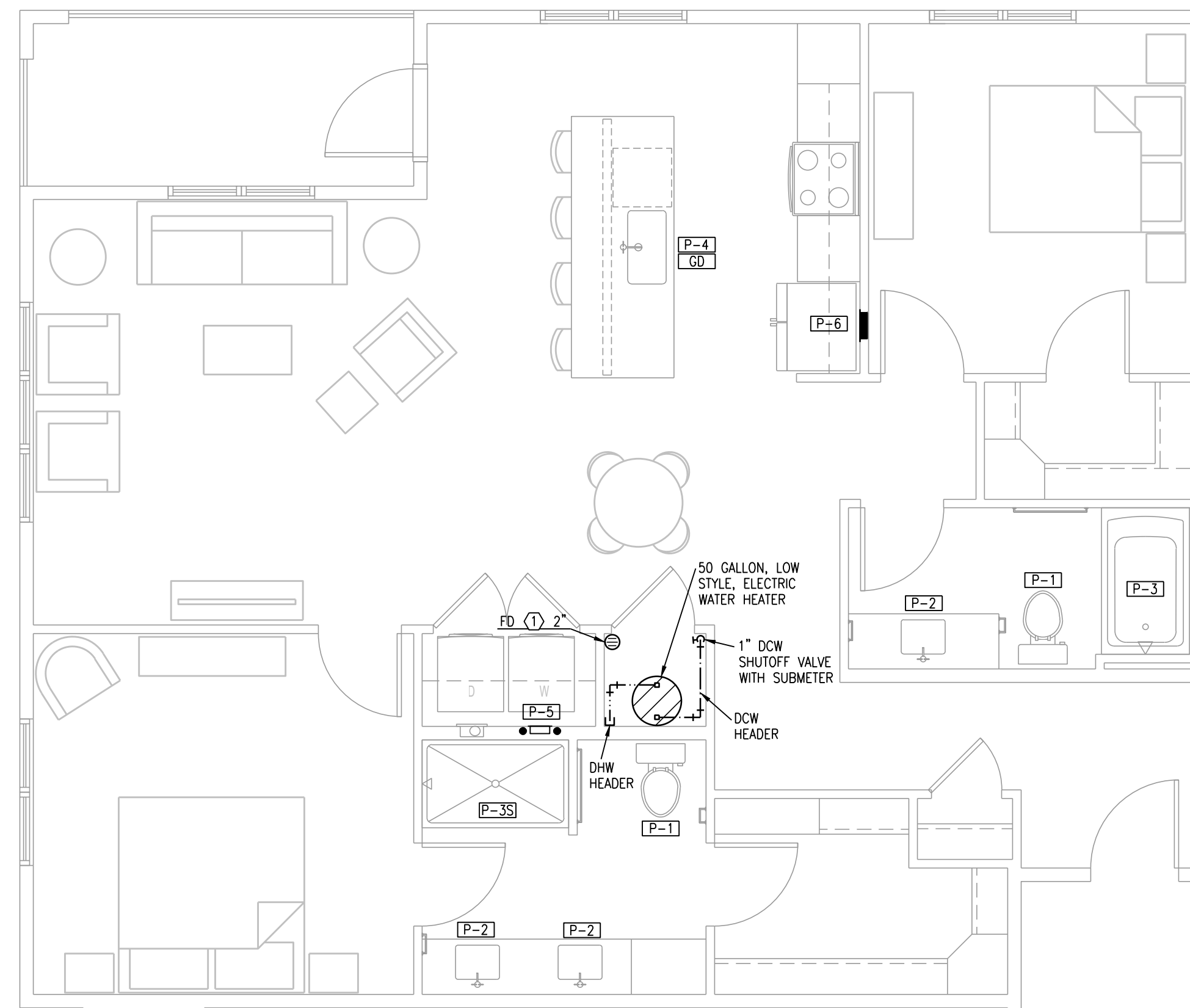
PROJECT NO.	20013	CHECKED BY	
BLDG TYPE II FIRST & SECOND FLOOR PLAN - PLUMBING			
BUILDING TYPE II			
2P101			



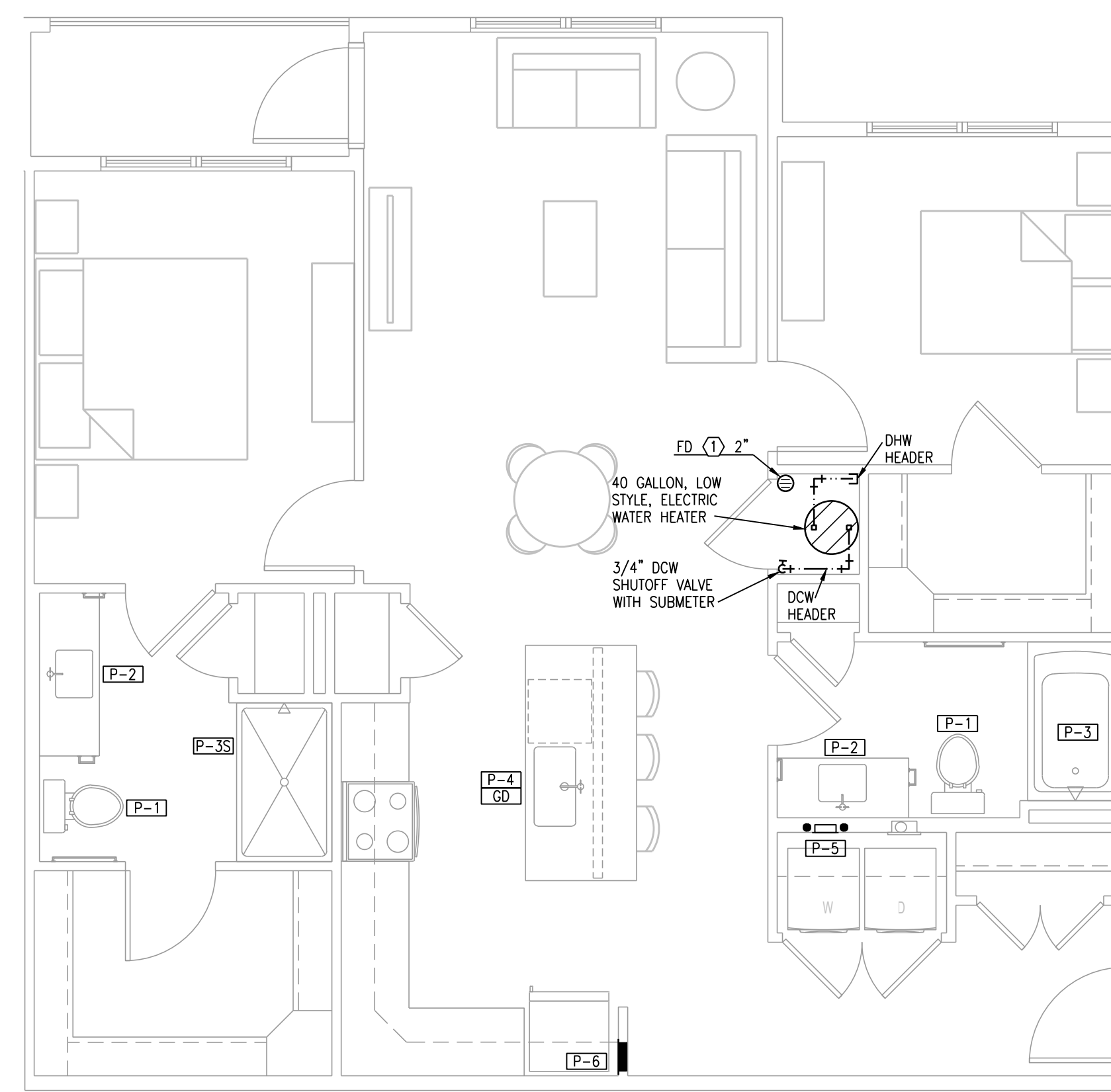
1 TYPICAL UNIT PLAN - A5
1/4"=1'-0" PLUMBING



2 TYPICAL UNIT PLAN - B1
1/4"=1'-0" PLUMBING



3 TYPICAL UNIT PLAN - B2
1/4"=1'-0" PLUMBING



4 TYPICAL UNIT PLAN - B3
1/4"=1'-0" PLUMBING

- NOTES:
- ROUTE TOP FLOOR SUPPLY PLUMBING IN CEILING BELOW. NO SUPPLY IN ATTIC.
 - PROVIDE AIR CHAMBERS ON P-4, P-5, AND P-6.
 - CONNECT DISHWASHERS, DISPOSERS, ICE MAKERS, WASHERS.
 - SUPPLY PIPING IS 1/2" UNLESS NOTED OTHERWISE.
 - PROVIDE FLOOR DRAIN ADJACENT WATER HEATER.
 - INSULATE FIRST 8 FT OF HW PIPING.
 - PROVIDE DRAIN PAN BELOW WASHING MACHINES WITH 3/4" DRAIN TO FLOOR DRAIN. PROVIDE AIR GAP.
 - PROVIDE 28"Ø DRAIN PAN BELOW WATER HEATER WITH 3/4" DRAIN TO FLOOR DRAIN. PROVIDE AIR GAP.
 - ALL DRAINS ON ADA KITCHEN SINKS SHOULD BE BACK OUTLET AT REAR OF SINK FOR ADA KNEE CLEARANCES.
 - NO EXPOSED PVC PIPING ALLOWED IN AHU/WH CLOSET. EITHER WRAP WITH INSULATION OR PROVIDE COPPER DRAIN PIPING.
 - ALL FLOOR DRAINS AT LAUNDRY AREAS AND IN MECHANICAL CLOSETS SHALL HAVE TRAP SEALS EQUAL TO RECTOR SEAL "SURE SEAL" #SS2009V.

- LEGEND:
- 1/2" DCW BACK TO DCW PEX HEADER IN CLOSET.
 - 1/2" DHW BACK TO DHW PEX HEADER IN CLOSET.
 - 3/4" DCW BACK TO DCW PEX HEADER IN CLOSET.
 - 3/4" DHW BACK TO DHW PEX HEADER IN CLOSET.

SEBREE Architects, Inc.
97 Dover Street, Suite 400, Avon, Indiana 46223-7356
Phone (317) 272-7800 FAX (317) 272-7808
Web Site: <http://www.sebreearchitects.com>

LS&A
Lester Sommers & Associates, P.A.
CONSULTING ENGINEERS
3639 SW Summerfield Drive, Suite A
Topeka, Kansas 66614-3074
8625 College Boulevard, Suite 102
Overland Park, Kansas 66210
Telephone: (785) 233-2232
Email: lsaps@lsaps.com
LSA PROJECT NO. 2007017

**PARKER + PINE APTS
BUILDING TYPE II
XX STREET
PARKER, COLORADO**

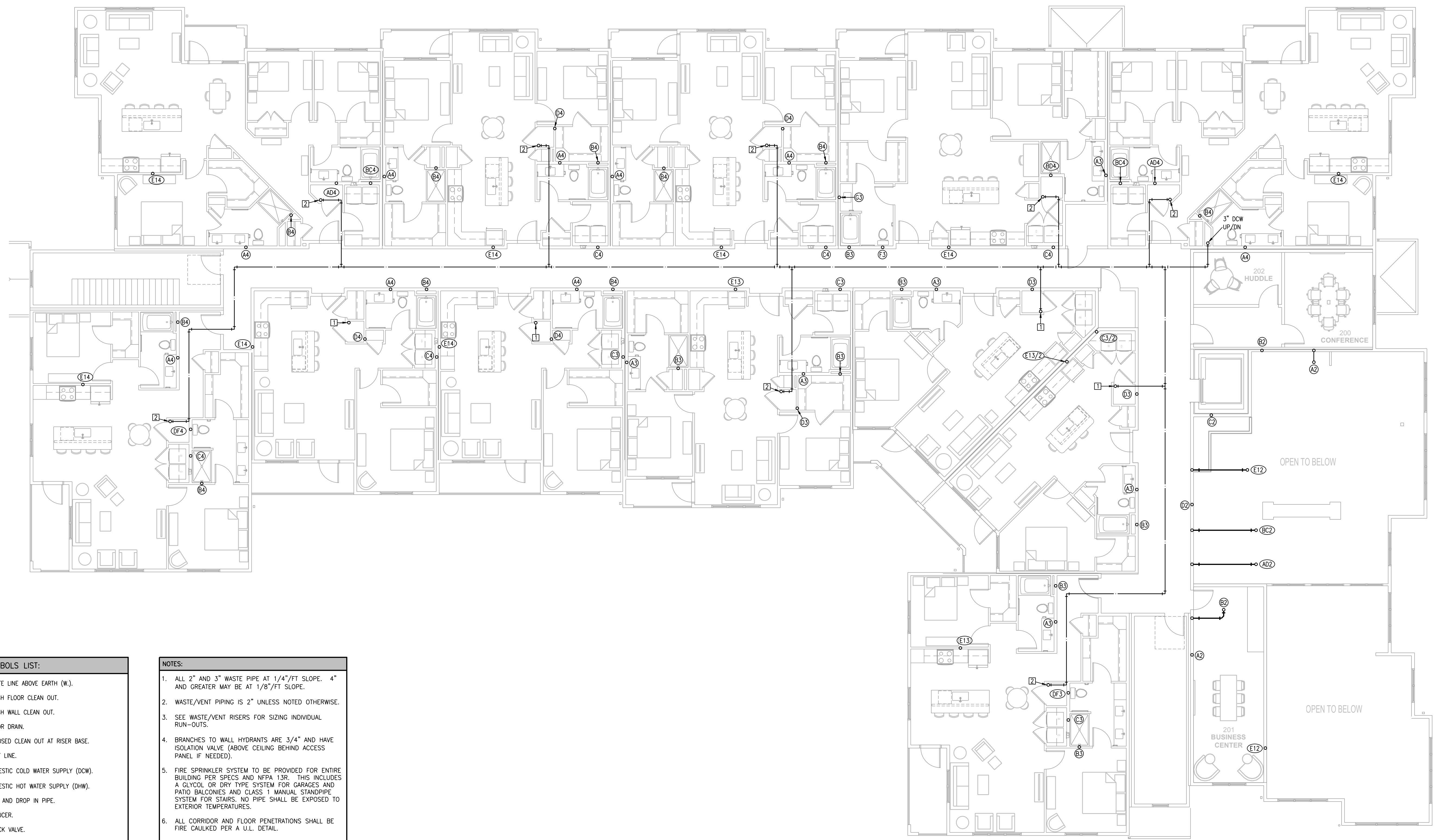
**NOT FOR
CONSTRUCTION**
CERTIFIED BY

NO.	DATE	BY	DESCRIPTION
	11.03.20		OWNER CHECK SET

PROJECT NO.	20013	CHECKED BY	
-------------	-------	------------	--

TYPICAL UNIT PLANS - PLUMBING

BUILDING TYPE II
2P202



PLUMBING SYMBOLS LIST:

—+—	WASTE LINE ABOVE EARTH (W).
FFCO ○	FLUSH FLOOR CLEAN OUT.
FWCO —○—	FLUSH WALL CLEAN OUT.
⊙	FLOOR DRAIN.
CO —+—	EXPOSED CLEAN OUT AT RISER BASE.
—	VENT LINE.
—	DOMESTIC COLD WATER SUPPLY (DCW).
—	DOMESTIC HOT WATER SUPPLY (DHW).
—○—	RISE AND DROP IN PIPE.
—>—	REDUCER.
— —	CHECK VALVE.
— —	STOP VALVE.
—E4 WH	WALL HYDRANT.
—F—	FIRE LINE/STANDPIPE.
—W—	WATER.
⊙	DENOTES DCW RISER DESIGNATION.
⊙	DENOTES WATER SUPPLY RISER DESIGNATION.

- NOTES:**
- ALL 2" AND 3" WASTE PIPE AT 1/4"/FT SLOPE. 4" AND GREATER MAY BE AT 1/8"/FT SLOPE.
 - WASTE/VENT PIPING IS 2" UNLESS NOTED OTHERWISE.
 - SEE WASTE/VENT RISERS FOR SIZING INDIVIDUAL RUN-OUTS.
 - BRANCHES TO WALL HYDRANTS ARE 3/4" AND HAVE ISOLATION VALVE (ABOVE CEILING BEHIND ACCESS PANEL IF NEEDED).
 - FIRE SPRINKLER SYSTEM TO BE PROVIDED FOR ENTIRE BUILDING PER SPECS AND NFPA 13R. THIS INCLUDES A GLYCOL OR DRY TYPE SYSTEM FOR GARAGES AND PATIO BALCONIES AND CLASS 1 MANUAL STANDPIPE SYSTEM FOR STAIRS. NO PIPE SHALL BE EXPOSED TO EXTERIOR TEMPERATURES.
 - ALL CORRIDOR AND FLOOR PENETRATIONS SHALL BE FIRE CAULKED PER A U.L. DETAIL.
 - ALL VENTS THRU ROOF (VTR) ARE 3" UNLESS NOTED OTHERWISE. HORIZONTAL VENT PIPING SHOWN ON THIRD FLOOR PLAN OCCURS ON FOURTH FLOOR ONLY.
 - ALL FLOOR DRAINS ARE TYPE "1", 2" UNLESS NOTED OTHERWISE.
 - PROVIDE ISOLATION VALVE IN DCW PIPING IN CORRIDOR ON SECOND FLOOR AT EACH APARTMENT STACK BRANCH TAP. PROVIDE FIRE RATED ACCESS PANEL AT EACH VALVE.
 - ALL DISHWASHER DRAINS SHALL BE CONNECTED TO THE KITCHEN SINK WASTE WITH AN AIR GAP IN ACCORDANCE WITH IPC 802.1.6

LEGEND:

① CLASS 1 MANUAL STANDPIPE WITH VALVE.

1 BUILDING TYPE III, SECOND FLOOR PLAN
 1/8"=1'-0"
 PLUMBING NORTH

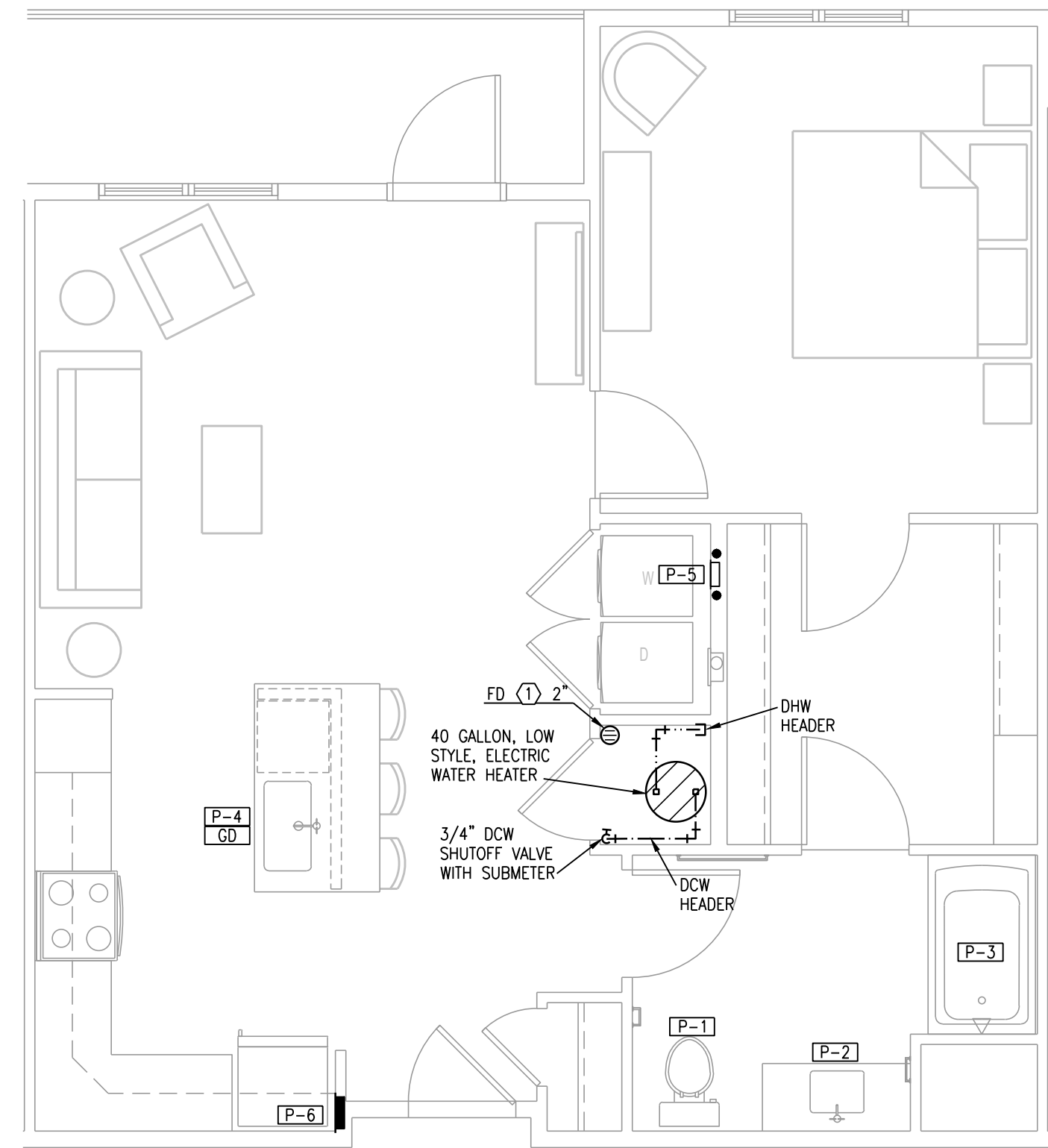
SEBREE Architects, Inc.
 97 Dover Street, Suite 400, Avon, Indiana 46123-7356
 Phone (317) 272-7800 FAX (317) 272-7808
 Web Site: <http://www.sebreearchitects.com>

LS&A
 Estimer Sommers & Associates, P.A.
 CONSULTING ENGINEERS
 3630 SW Summerfield Drive, Suite A
 Topeka, Kansas 66614-3874
 8625 College Boulevard, Suite 102
 Overland Park, Kansas 66210
 Telephone: (785) 233-0332
 Email: lsaps@lsaps.com
 LSA PROJECT NO. 2007017

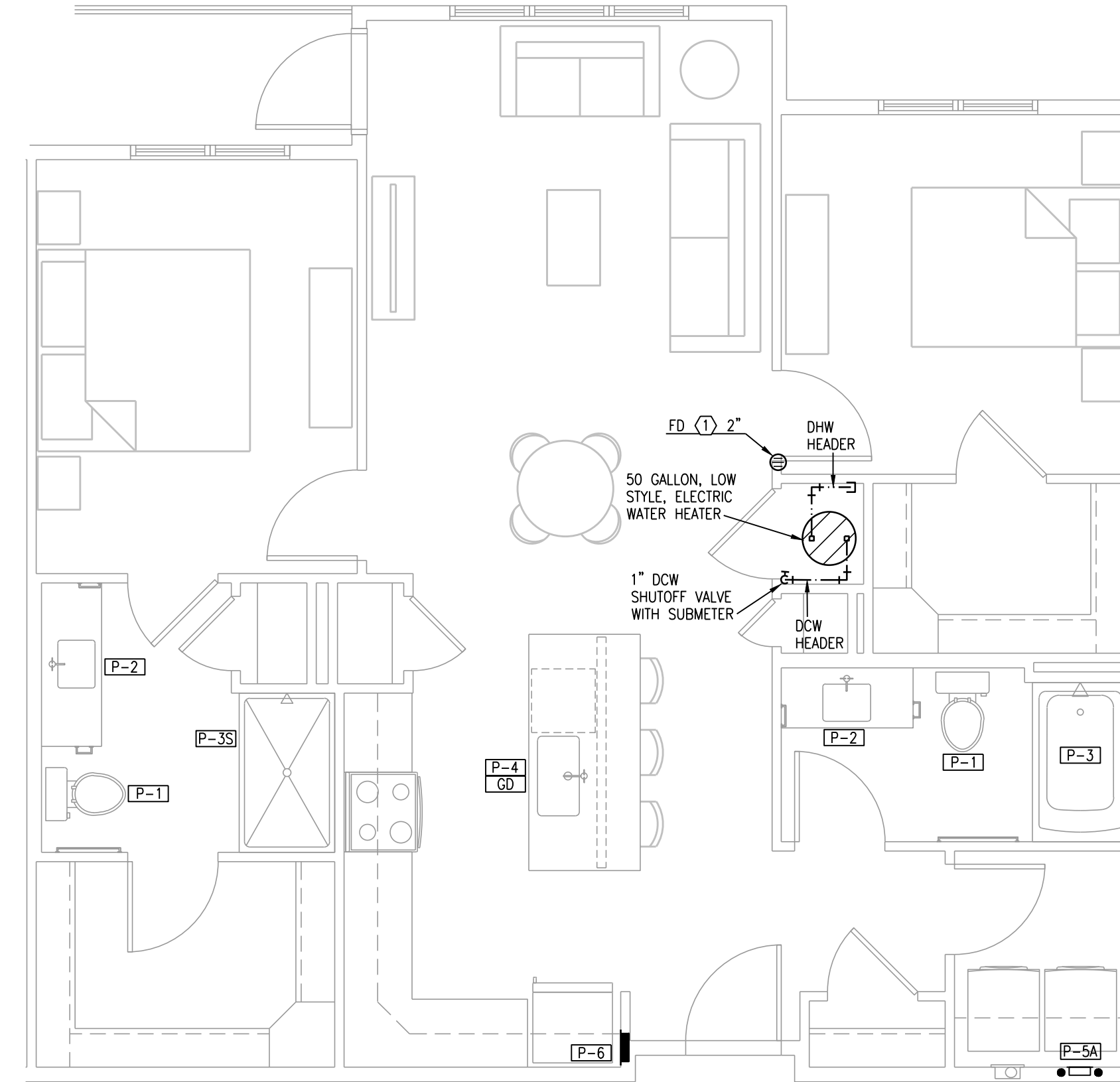
**PARKER + PINE APTS
 BUILDING TYPE III
 XX STREET
 PARKER, COLORADO**

**NOT FOR
 CONSTRUCTION**
 CERTIFIED BY

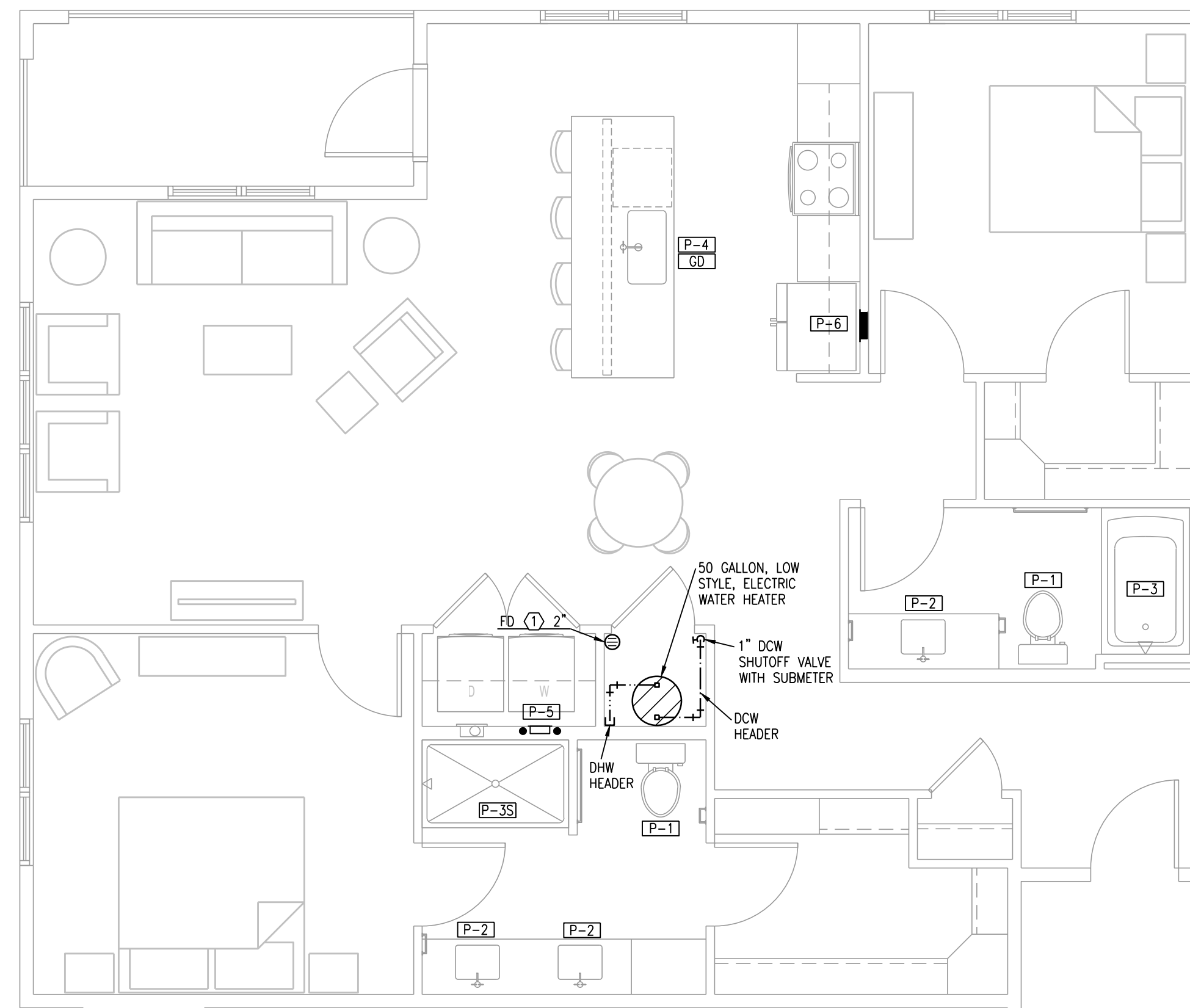
NO.	DATE	BY	DESCRIPTION
			OWNER CHECK SET
	11.03.20		
DATE	DRAWN BY		
PROJECT NO.	20013	CHECKED BY	
BLDG TYPE III SECOND FLOOR PLAN - PLUMBING			
BUILDING TYPE III 3P102			



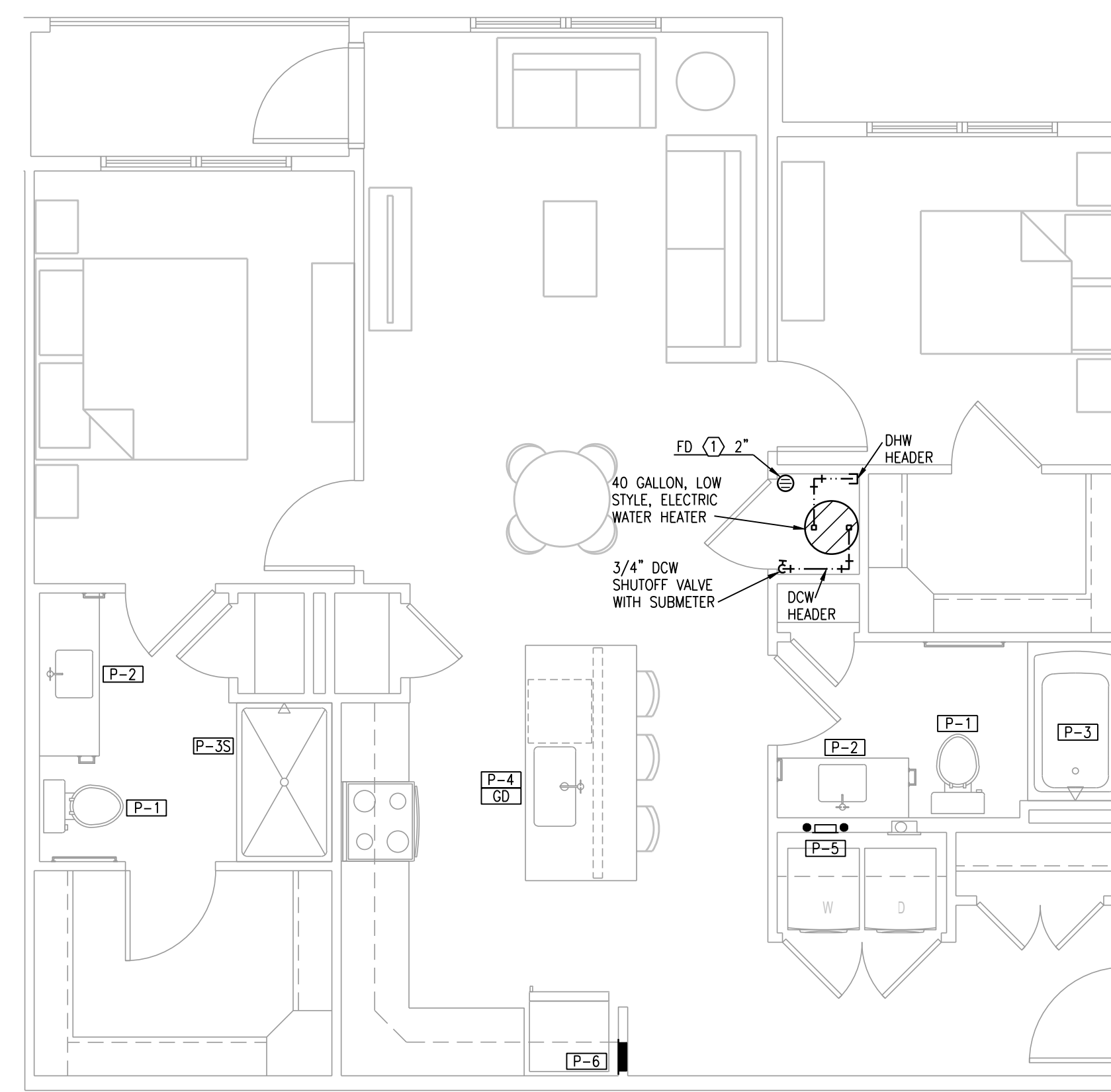
1 TYPICAL UNIT PLAN - A5
1/4"=1'-0" PLUMBING



2 TYPICAL UNIT PLAN - B1
1/4"=1'-0" PLUMBING



3 TYPICAL UNIT PLAN - B2
1/4"=1'-0" PLUMBING



4 TYPICAL UNIT PLAN - B3
1/4"=1'-0" PLUMBING

- NOTES:
- ROUTE TOP FLOOR SUPPLY PLUMBING IN CEILING BELOW. NO SUPPLY IN ATTIC.
 - PROVIDE AIR CHAMBERS ON P-4, P-5, AND P-6.
 - CONNECT DISHWASHERS, DISPOSERS, ICE MAKERS, WASHERS.
 - SUPPLY PIPING IS 1/2" UNLESS NOTED OTHERWISE.
 - PROVIDE FLOOR DRAIN ADJACENT WATER HEATER.
 - INSULATE FIRST 8 FT OF HW PIPING.
 - PROVIDE DRAIN PAN BELOW WASHING MACHINES WITH 3/4" DRAIN TO FLOOR DRAIN. PROVIDE AIR GAP.
 - PROVIDE 28"Ø DRAIN PAN BELOW WATER HEATER WITH 3/4" DRAIN TO FLOOR DRAIN. PROVIDE AIR GAP.
 - ALL DRAINS ON ADA KITCHEN SINKS SHOULD BE BACK OUTLET AT REAR OF SINK FOR ADA KNEE CLEARANCES.
 - NO EXPOSED PVC PIPING ALLOWED IN AHU/WH CLOSET. EITHER WRAP WITH INSULATION OR PROVIDE COPPER DRAIN PIPING.
 - ALL FLOOR DRAINS AT LAUNDRY AREAS AND IN MECHANICAL CLOSETS SHALL HAVE TRAP SEALS EQUAL TO RECTOR SEAL "SURE SEAL" #SS2009V.

- LEGEND:
- 1/2" DCW BACK TO DCW PEX HEADER IN CLOSET.
 - 1/2" DHW BACK TO DHW PEX HEADER IN CLOSET.
 - 3/4" DCW BACK TO DCW PEX HEADER IN CLOSET.
 - 3/4" DHW BACK TO DHW PEX HEADER IN CLOSET.

SEBREE Architects, Inc.
97 Dover Street, Suite 400, Avon, Indiana 46223-7356
Phone (317) 272-7800 FAX (317) 272-7808
Web Site: <http://www.sebreearchitects.com>

LS&A
Lester Sommers & Associates, P.A.
CONSULTING ENGINEERS
3639 SW Summerfield Drive, Suite A
Topeka, Kansas 66614-3074
8625 College Boulevard, Suite 102
Overland Park, Kansas 66210
Telephone: (785) 233-3232
Email: lsaps@lsaps.com
LSA PROJECT NO. 2007017

**PARKER + PINE APTS
BUILDING TYPE III
XX STREET
PARKER, COLORADO**

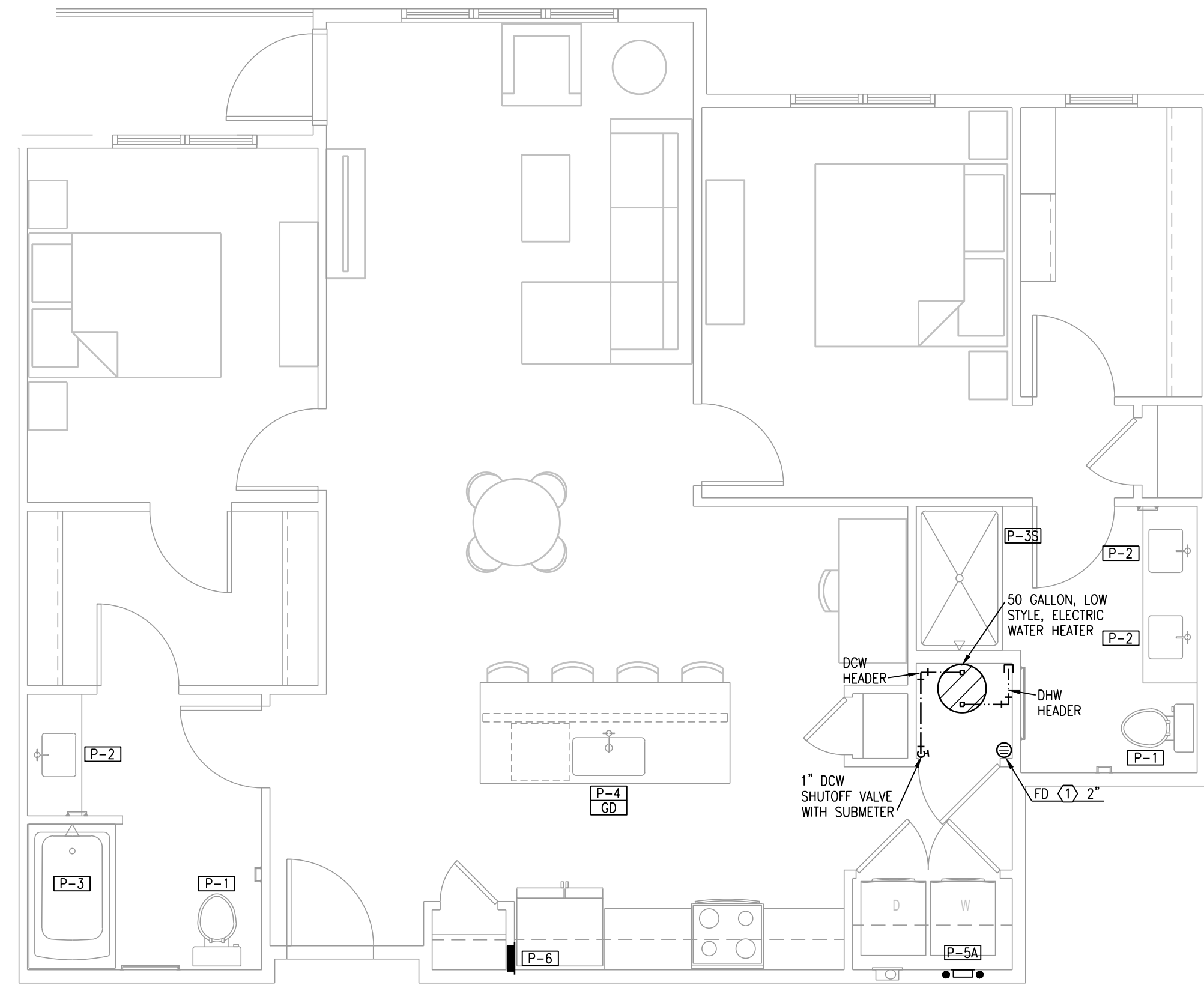
**NOT FOR
CONSTRUCTION**
CERTIFIED BY

NO.	DATE	DESCRIPTION	BY
	11.03.20	OWNER CHECK SET	

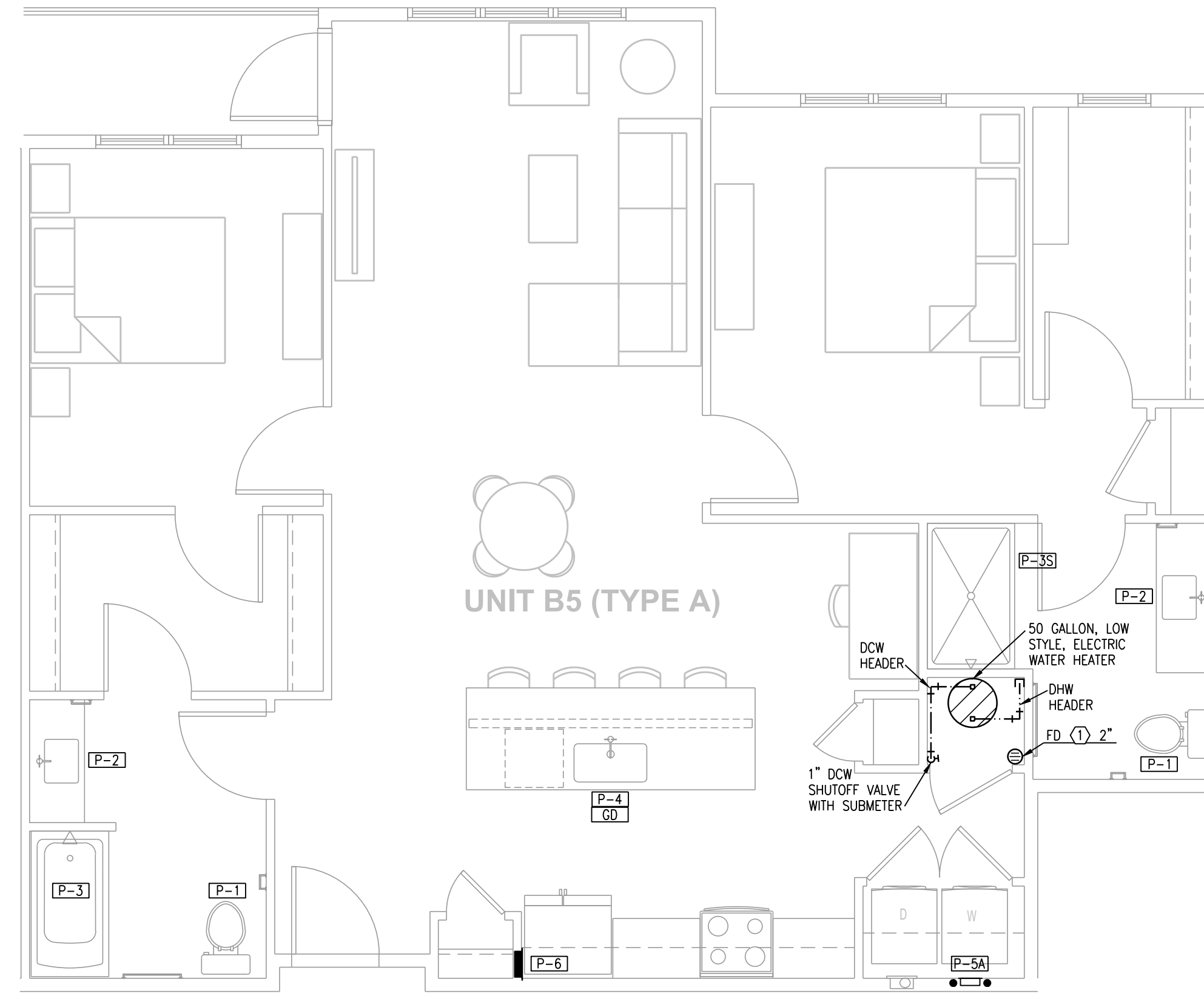
PROJECT NO.	20013	DRAWN BY	
		CHECKED BY	

TYPICAL UNIT PLANS - PLUMBING

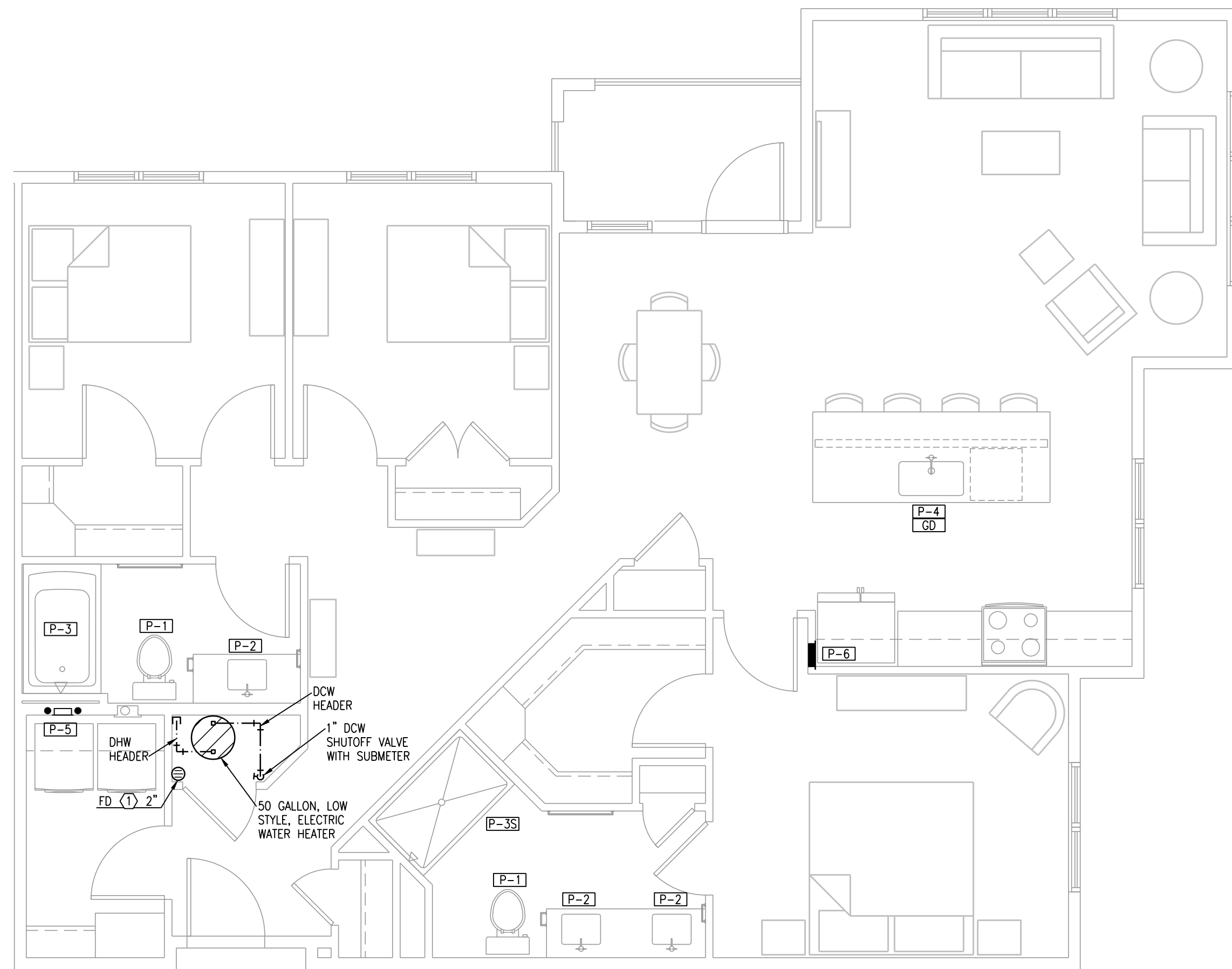
BUILDING TYPE III
3P202



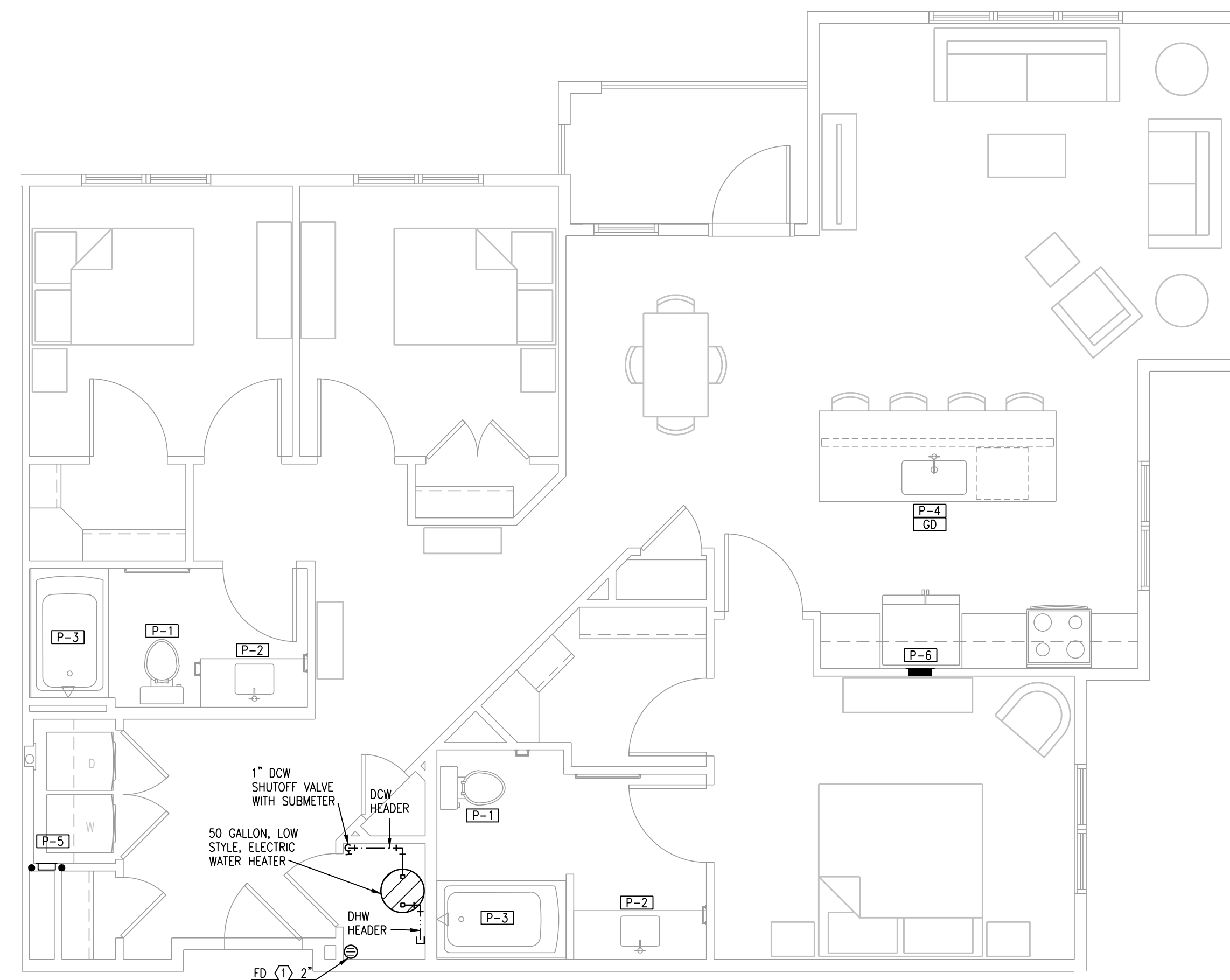
1 TYPICAL UNIT PLAN - B4
1/4"=1'-0" PLUMBING



2 TYPICAL UNIT PLAN - B5
1/4"=1'-0" PLUMBING



3 TYPICAL UNIT PLAN - C1
1/4"=1'-0" (UNITS C1.1, C1.2, C1.3 SIMILAR) PLUMBING



4 TYPICAL UNIT PLAN - C2
1/4"=1'-0" PLUMBING

- NOTES:**
- ROUTE TOP FLOOR SUPPLY PLUMBING IN CEILING BELOW. NO SUPPLY IN ATTIC.
 - PROVIDE AIR CHAMBERS ON P-4, P-5, AND P-6.
 - CONNECT DISHWASHERS, DISPOSERS, ICE MAKERS, WASHERS.
 - SUPPLY PIPING IS 1/2" UNLESS NOTED OTHERWISE.
 - PROVIDE FLOOR DRAIN ADJACENT WATER HEATER.
 - INSULATE FIRST 8 FT OF HW PIPING.
 - PROVIDE DRAIN PAN BELOW WASHING MACHINES WITH 3/4" DRAIN TO FLOOR DRAIN. PROVIDE AIR GAP.
 - PROVIDE 28"Ø DRAIN PAN BELOW WATER HEATER WITH 3/4" DRAIN TO FLOOR DRAIN. PROVIDE AIR GAP.
 - ALL DRAINS ON ADA KITCHEN SINKS SHOULD BE BACK OUTLET AT REAR OF SINK FOR ADA KNEE CLEARANCES.
 - NO EXPOSED PVC PIPING ALLOWED IN AHU/WH CLOSET. EITHER WRAP WITH INSULATION OR PROVIDE COPPER DRAIN PIPING.
 - ALL FLOOR DRAINS AT LAUNDRY AREAS AND IN MECHANICAL CLOSETS SHALL HAVE TRAP SEALS EQUAL TO RECTOR SEAL "SURE SEAL" #SS2009V.

- LEGEND:**
- 1/2" DCW BACK TO DCW PEX HEADER IN CLOSET.
 - 1/2" DHW BACK TO DHW PEX HEADER IN CLOSET.
 - 3/4" DCW BACK TO DCW PEX HEADER IN CLOSET.
 - 3/4" DHW BACK TO DHW PEX HEADER IN CLOSET.

SEBREE Architects, Inc.
97 Dover Street, Suite 400, Avon, Indiana 46223-7356
Phone (317) 272-7800 FAX (317) 272-7808
Web Site: <http://www.sebreearchitects.com>

LS&A
Lester Sommers & Associates, P.A.
CONSULTING ENGINEERS
3839 SW Summerfield Drive, Suite A
Topeka, Kansas 66614-3874
8625 College Boulevard, Suite 102
Overland Park, Kansas 66210
Telephone: (785) 233-3332
Email: lsaps@lsaps.com
LSA PROJECT NO. 2007017

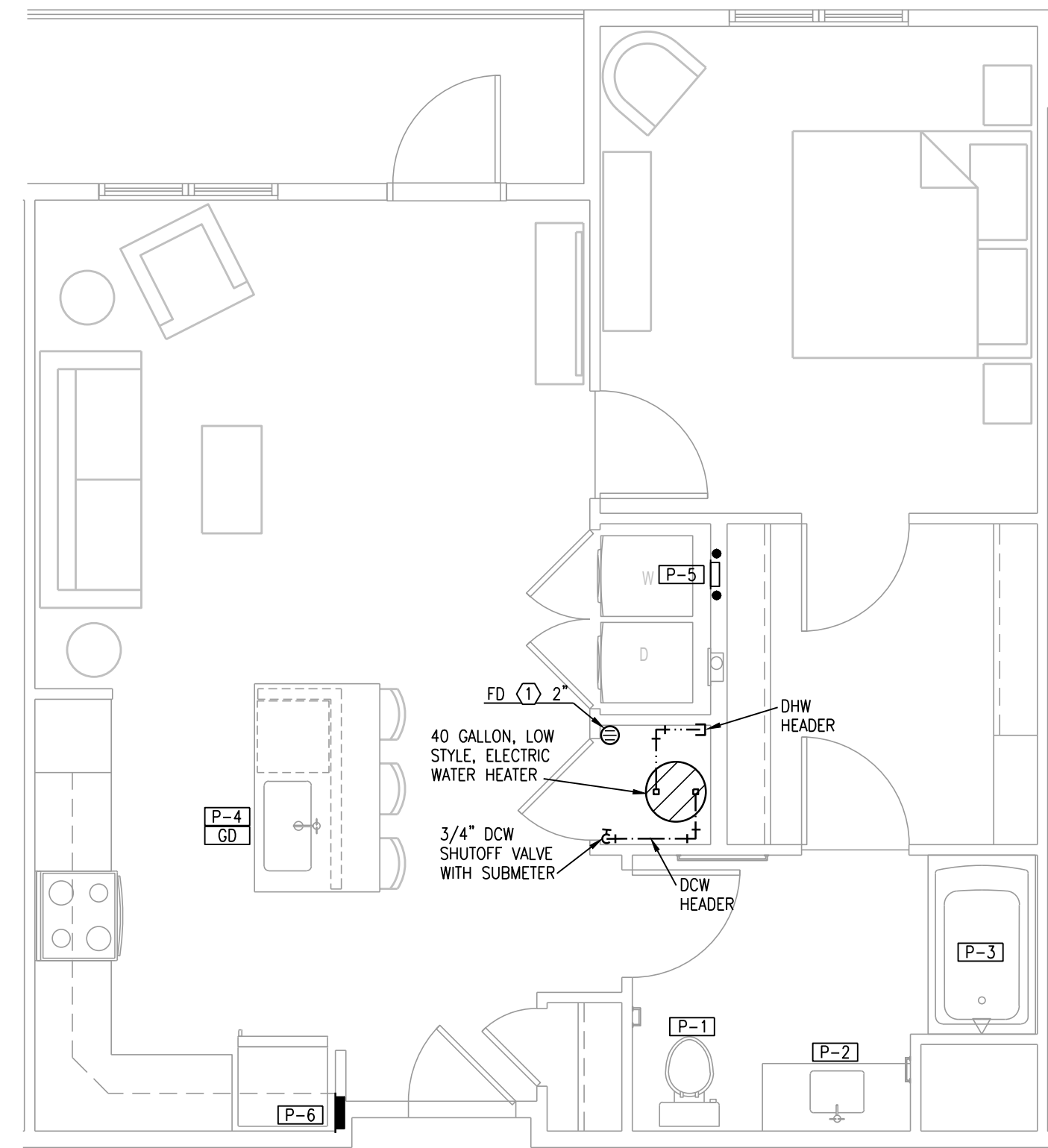
**PARKER + PINE APTS
BUILDING TYPE III**
XX STREET
PARKER, COLORADO

**NOT FOR
CONSTRUCTION**
CERTIFIED BY

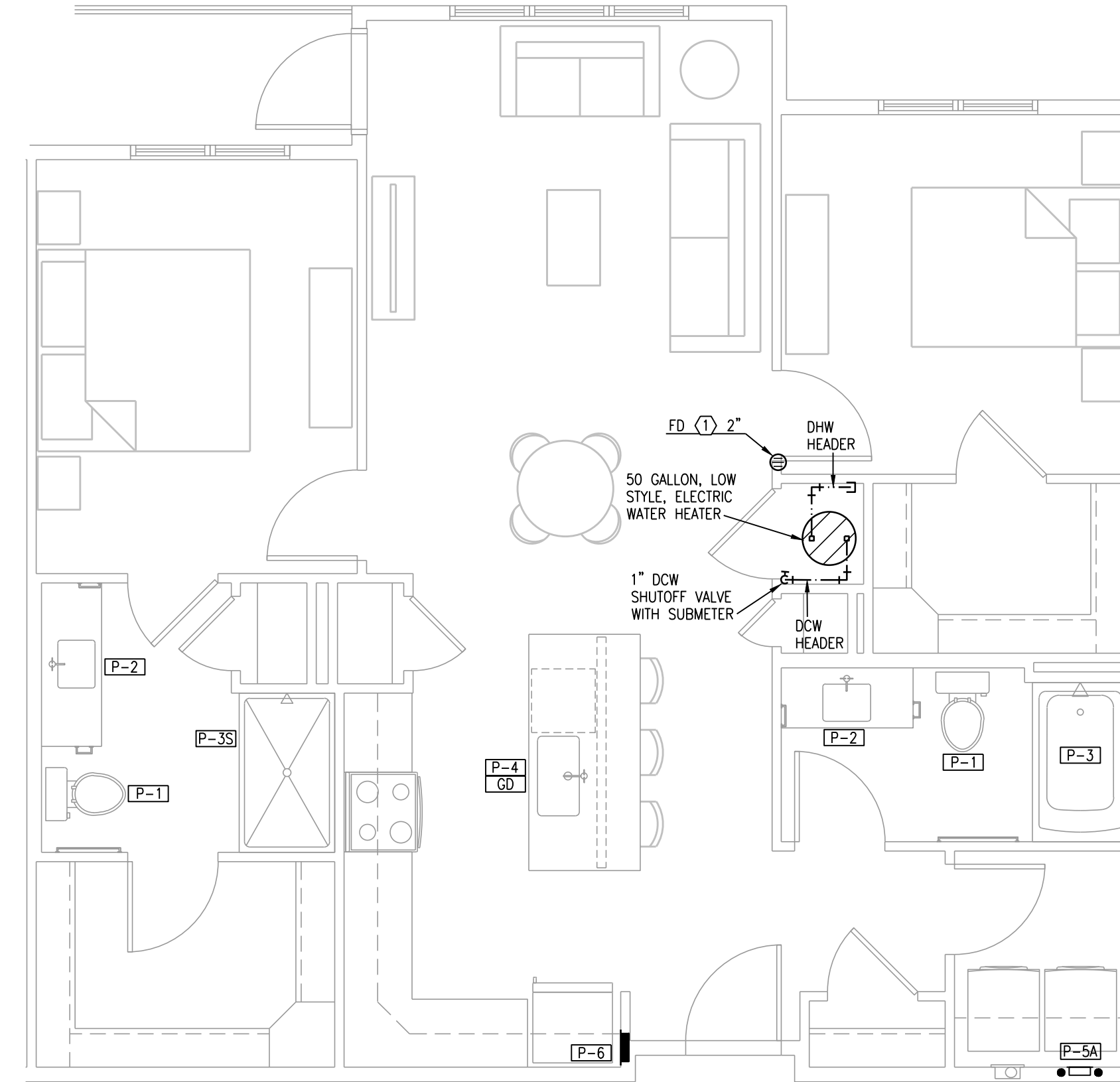
NO.	DATE	BY	DESCRIPTION
	11.03.20		OWNER CHECK SET
PROJECT NO.	20013	CHECKED BY	

TYPICAL UNIT PLANS - PLUMBING

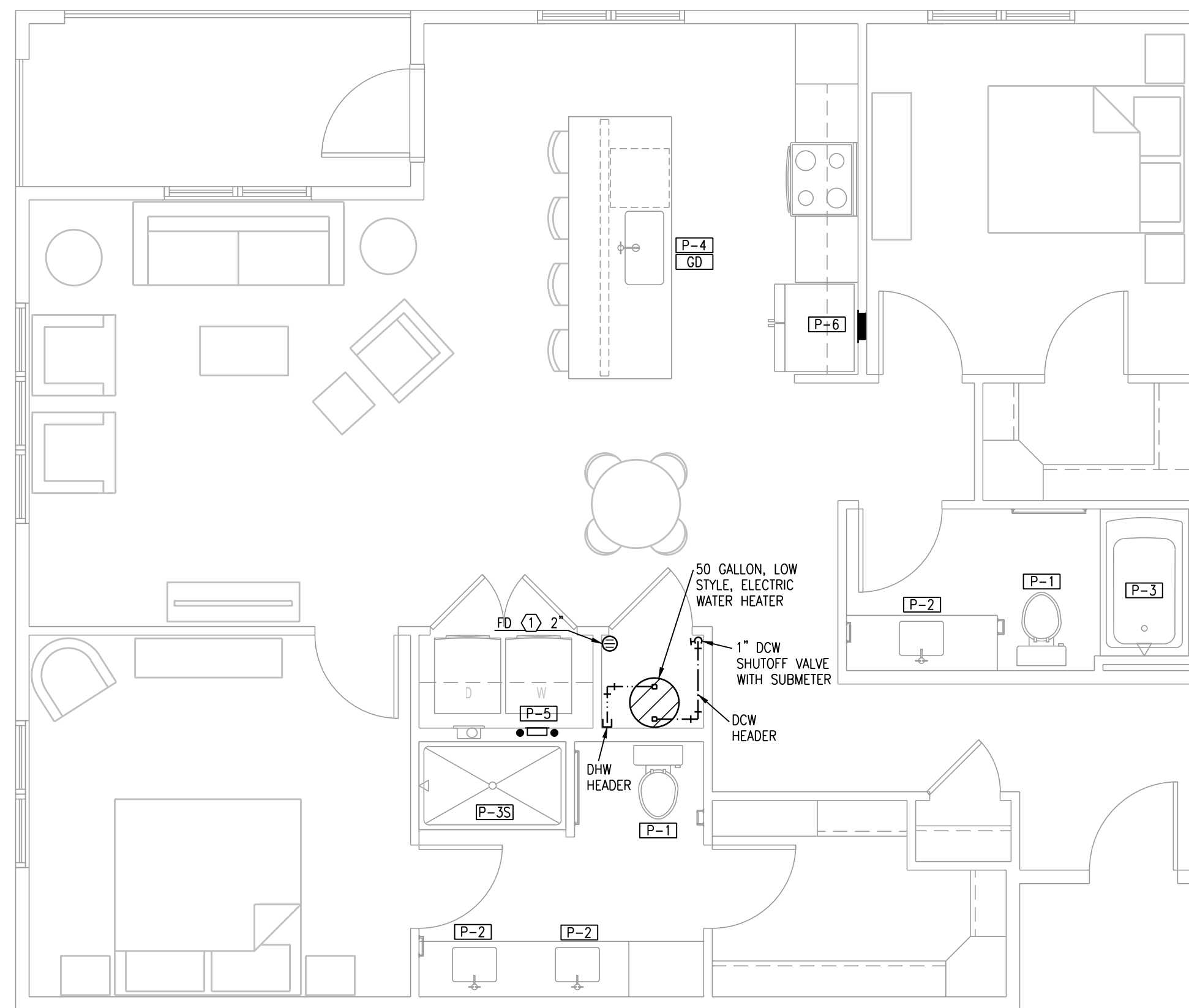
BUILDING TYPE III
3P203



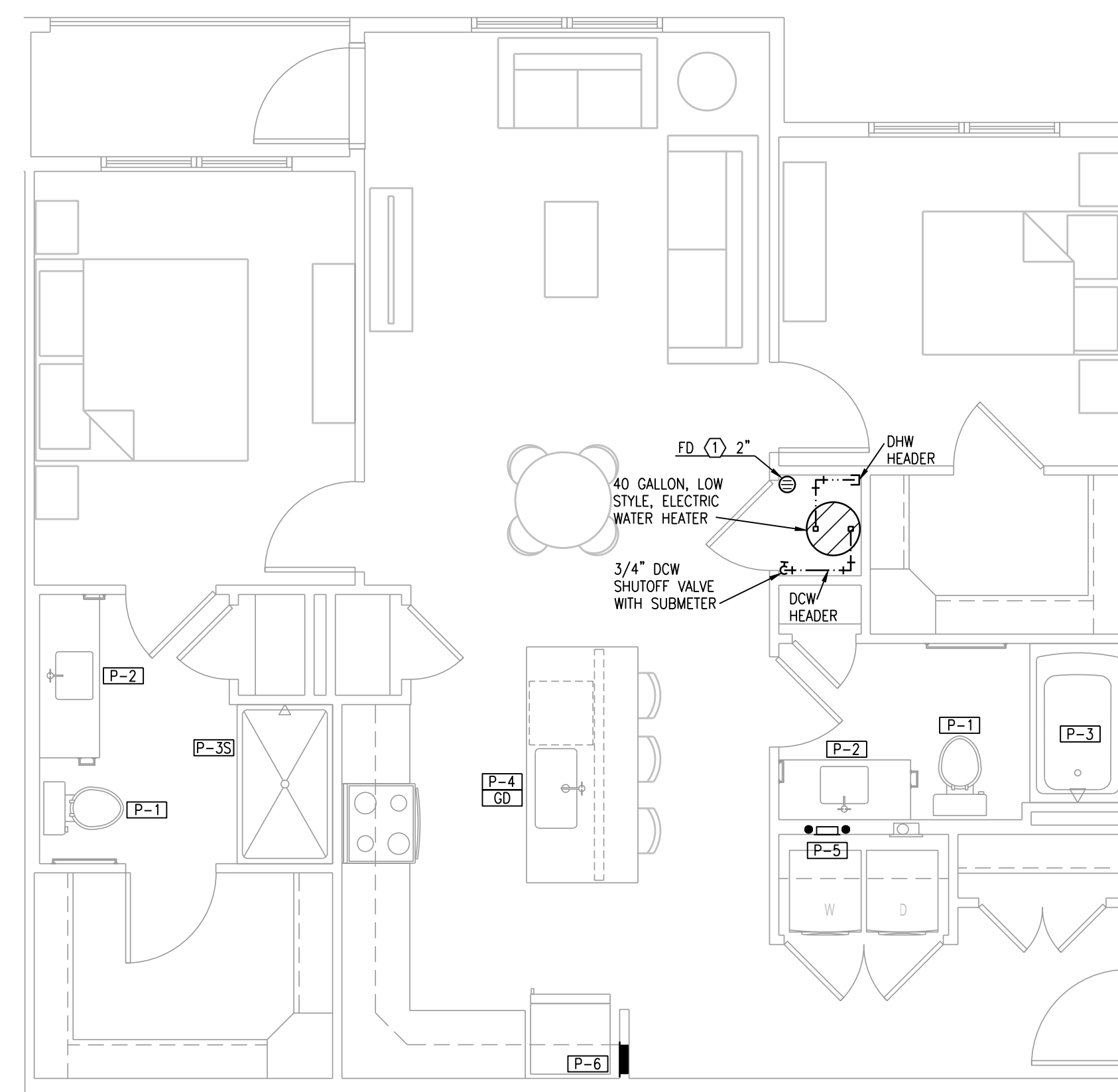
1 TYPICAL UNIT PLAN - A5
1/4"=1'-0" PLUMBING



2 TYPICAL UNIT PLAN - B1
1/4"=1'-0" PLUMBING



3 TYPICAL UNIT PLAN - B2
1/4"=1'-0" PLUMBING



4 TYPICAL UNIT PLAN - B3
1/4"=1'-0" PLUMBING

- NOTES:
- ROUTE TOP FLOOR SUPPLY PLUMBING IN CEILING BELOW. NO SUPPLY IN ATTIC.
 - PROVIDE AIR CHAMBERS ON P-4, P-5, AND P-6.
 - CONNECT DISHWASHERS, DISPOSERS, ICE MAKERS, WASHERS.
 - SUPPLY PIPING IS 1/2" UNLESS NOTED OTHERWISE.
 - PROVIDE FLOOR DRAIN ADJACENT WATER HEATER.
 - INSULATE FIRST 8 FT OF HW PIPING.
 - PROVIDE DRAIN PAN BELOW WASHING MACHINES WITH 3/4" DRAIN TO FLOOR DRAIN. PROVIDE AIR GAP.
 - PROVIDE 28"Ø DRAIN PAN BELOW WATER HEATER WITH 3/4" DRAIN TO FLOOR DRAIN. PROVIDE AIR GAP.
 - ALL DRAINS ON ADA KITCHEN SINKS SHOULD BE BACK OUTLET AT REAR OF SINK FOR ADA KNEE CLEARANCES.
 - NO EXPOSED PVC PIPING ALLOWED IN AHU/WH CLOSET. EITHER WRAP WITH INSULATION OR PROVIDE COPPER DRAIN PIPING.
 - ALL FLOOR DRAINS AT LAUNDRY AREAS AND IN MECHANICAL CLOSETS SHALL HAVE TRAP SEALS EQUAL TO RECTOR SEAL "SURE SEAL" #SS2009V.

- LEGEND:
- 1/2" DCW BACK TO DCW PEX HEADER IN CLOSET.
 - 1/2" DHW BACK TO DHW PEX HEADER IN CLOSET.
 - 3/4" DCW BACK TO DCW PEX HEADER IN CLOSET.
 - 3/4" DHW BACK TO DHW PEX HEADER IN CLOSET.

SEBREE Architects, Inc.
97 Dover Street, Suite 400, Avon, Indiana 46223-7356
Phone (317) 272-7800 FAX (317) 272-7808
Web Site: <http://www.sebreearchitects.com>

LS&A
Lester Sommers & Associates, P.A.
CONSULTING ENGINEERS
3639 SW Summerfield Drive, Suite A
Topeka, Kansas 66614-3074
8625 College Boulevard, Suite 102
Overland Park, Kansas 66210
Telephone: (785) 233-3232
Email: lsaps@lsaps.com
LSA PROJECT NO. 2007017

**PARKER + PINE APTS
BUILDING TYPE IV
XX STREET
PARKER, COLORADO**

**NOT FOR
CONSTRUCTION**
CERTIFIED BY

NO.	DATE	BY	DESCRIPTION
	11.03.20		OWNER CHECK SET

PROJECT NO. 20013 DRAWN BY

TYPICAL UNIT PLANS - PLUMBING CHECKED BY

BUILDING TYPE IV
4P202

