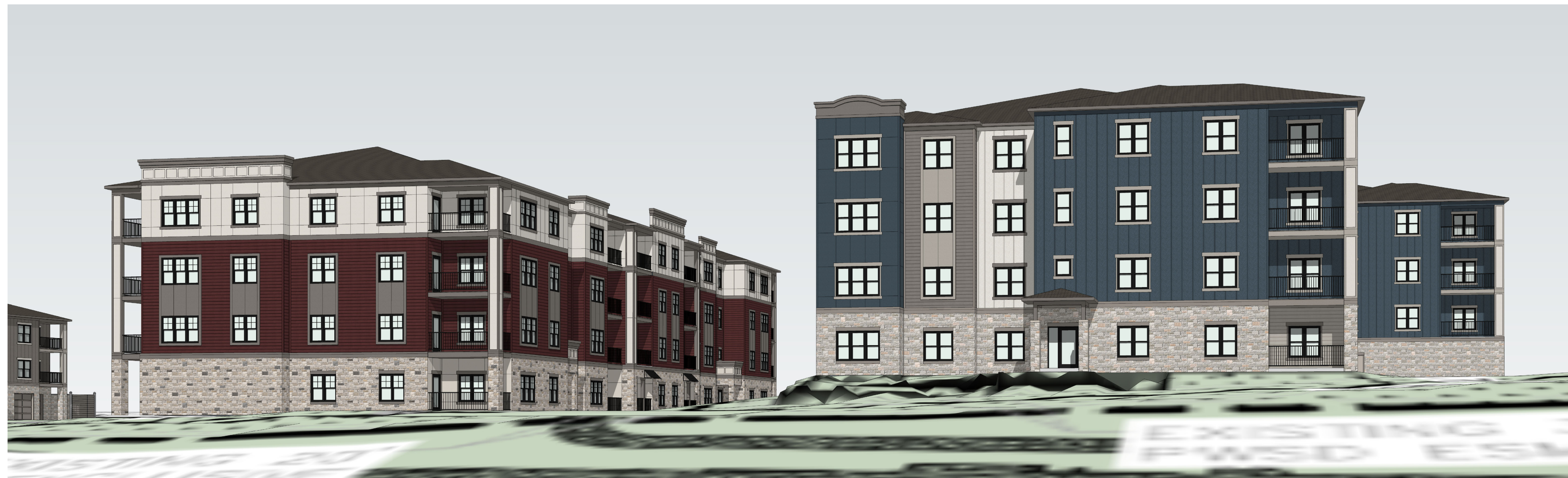






**3** BUILDINGS 2 & 3  
VIEW FROM NORTH  
NTS



**2** BUILDINGS 2 & 3  
VIEW FROM TRAIL  
NTS



**1** BUILDINGS 2 & 3  
VIEW FROM TRAIL  
NTS

*SEBREE Architects, Inc.*  
97 Dover Street, Suite 400, Avon, Indiana 46123-7356  
Phone (317) 272-7800 FAX (317) 272-7808  
Web Site: <http://www.sebreearchitects.com>

THE GARRETT COMPANIES

PARKER + PINE FILING #2  
LOTS 1-3  
MULTI-FAMILY PROJECT  
PARKER, COLORADO

NOT FOR  
CONSTRUCTION

NO.	DATE	BY	DESCRIPTION
			COMMENT RESPONSES
02	16.21		

DATE	DRAWN BY
PROJECT NO. 20013	CHECKED BY

SITE  
COLORED ELEVATIONS