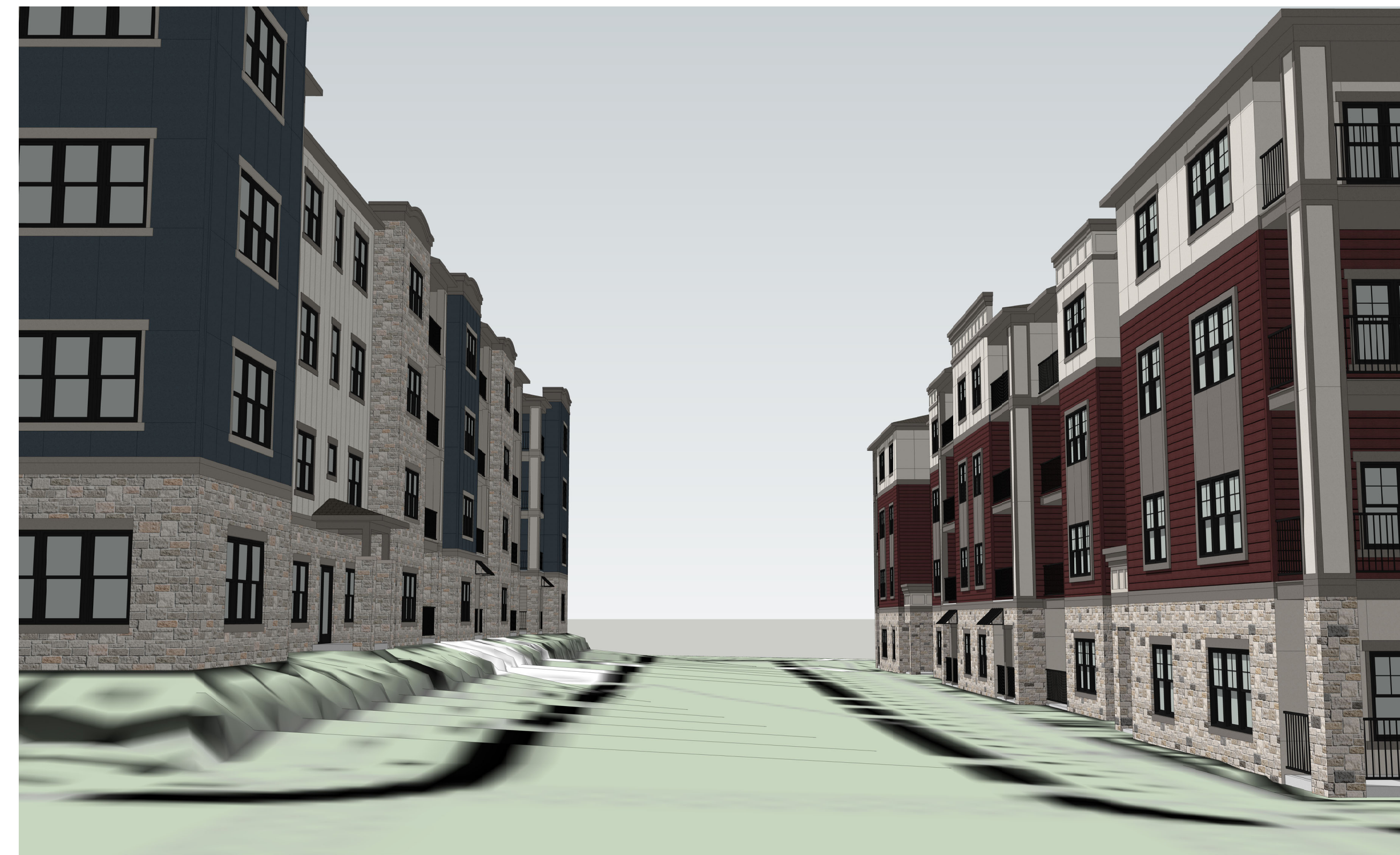


3 BUILDINGS 3 & 4
VIEW FROM EAST
NTS



2 BUILDINGS 2 & 3
VIEW FROM NORTH INTERSECTION
NTS



1 BUILDINGS 1, 2 & 3
VIEW FROM LOT 3
NTS

SEBREE Architects, Inc.
97 Dover Street, Suite 400, Avon, Indiana 46123-7356
Phone (317) 272-7800 FAX (317) 272-7808
Web Site: <http://www.sebreearchitects.com>



PARKER + PINE FILING #2
LOTS 1-3

MULTI-FAMILY PROJECT
PARKER, COLORADO

NOT FOR
CONSTRUCTION

NO.	DATE	BY	DESCRIPTION
	02.16.21		COMMENT RESPONSES

DATE	DRAWN BY
PROJECT NO. 20013	CHECKED BY

SITE
COLORED ELEVATIONS

