

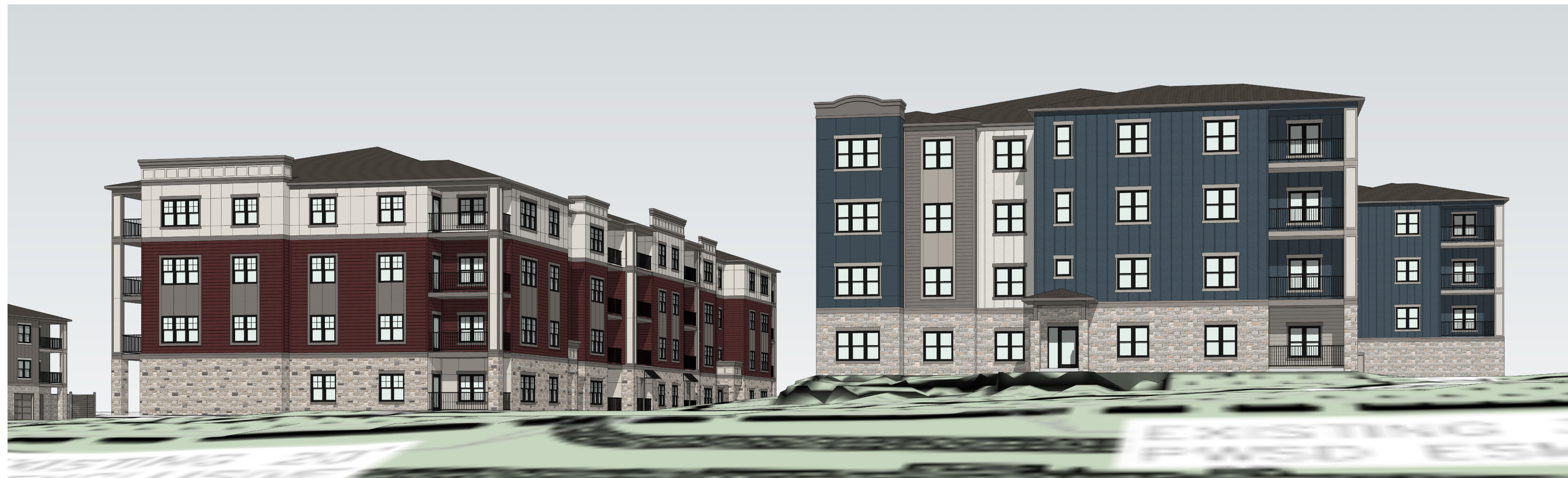




**3** BUILDINGS 2 & 3  
VIEW FROM NORTH

NTS

NOTE: THE ELEVATIONS ARE IN COMPLIANCE WITH THE PARKER AND PINE MIXED-USE DEVELOPMENT DESIGN STANDARDS.



**2** BUILDINGS 2 & 3  
VIEW FROM TRAIL

NTS



**1** BUILDINGS 2 & 3  
VIEW FROM TRAIL

NTS

**SEBREE Architects, Inc.**  
97 Dover Street, Suite 400, Avon, Indiana 46123-7356  
Phone (317) 272-7800 FAX (317) 272-7808  
Web Site: <http://www.sebreearchitects.com>

**THE GARRETT COMPANIES**

**PARKER + PINE FILING #2**  
**LOTS 1-3**

MULTI-FAMILY PROJECT  
PARKER, COLORADO

**NOT FOR CONSTRUCTION**

NO.	DATE	BY	DESCRIPTION
			COMMENT RESPONSES
04.19.21			COMMENT RESPONSES
05.27.21			

DATE	DRAWN BY
PROJECT NO. 20013	CHECKED BY

SITE  
COLORED ELEVATIONS