





**5** BUILDING 4  
VIEW FROM TRAIL  
NTS

NOTE: THE ELEVATIONS ARE IN COMPLIANCE WITH THE PARKER AND PINE MIXED-USE DEVELOPMENT DESIGN STANDARDS.



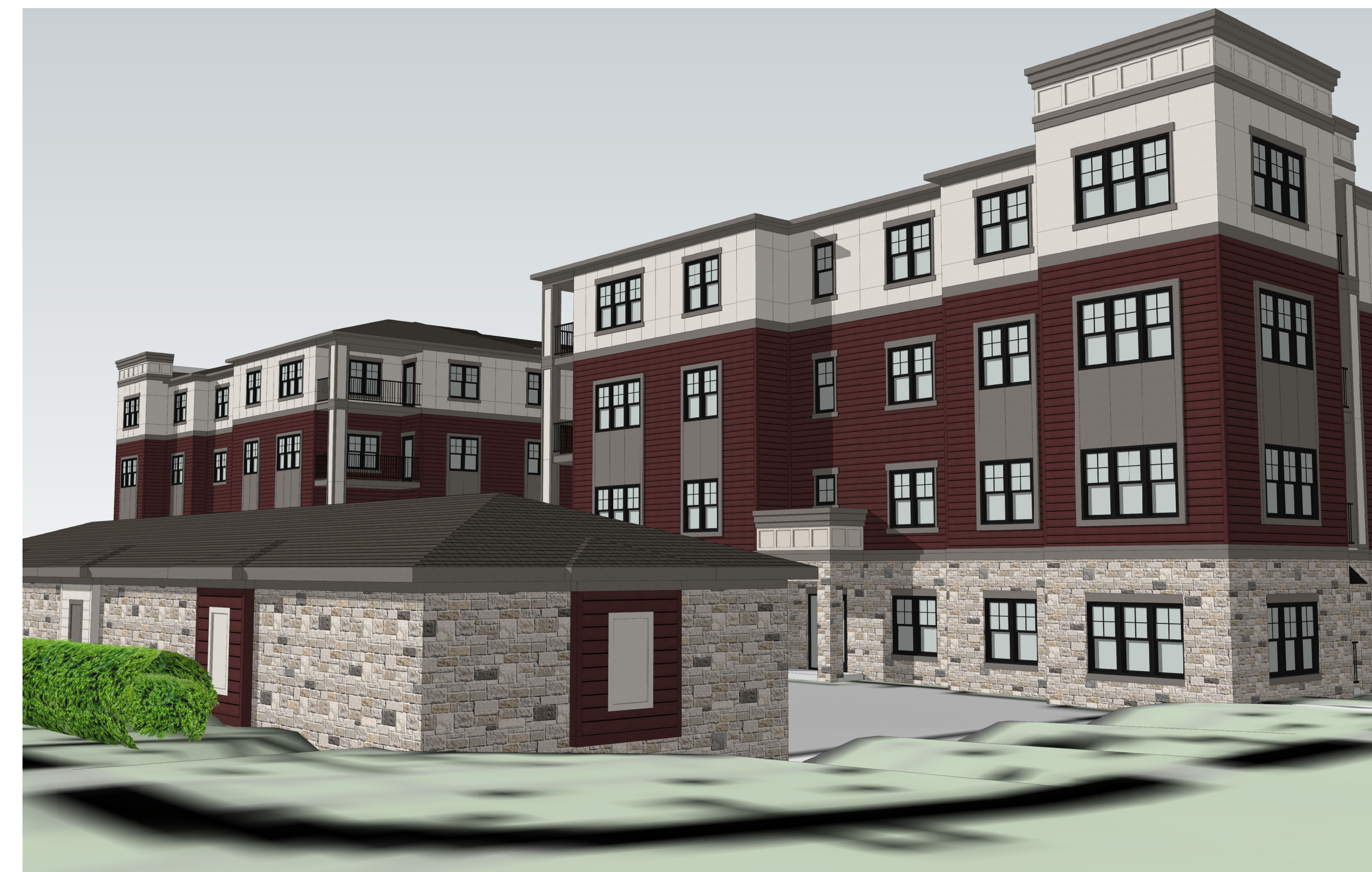
**4** BUILDING 4  
VIEW FROM TRAIL  
NTS



**3** BUILDING 4  
VIEW FROM TRAIL  
NTS



**2** BUILDING 4  
VIEW FROM EAST  
NTS



**1** BUILDING 4  
VIEW FROM NORTHEAST  
NTS

SEBREE Architects, Inc.  
97 Dover Street, Suite 400, Avon, Indiana 46123-7356  
Phone (317) 272-7800 FAX (317) 272-7808  
Web Site: <http://www.sebreearchitects.com>

THE GARRETT COMPANIES

PARKER + PINE FILING #2  
LOTS 1-3  
MULTI-FAMILY PROJECT  
PARKER, COLORADO

NOT FOR  
CONSTRUCTION

NO.	DATE	BY	DESCRIPTION
	04.19.21		COMMENT RESPONSES
	05.27.21		COMMENT RESPONSES