
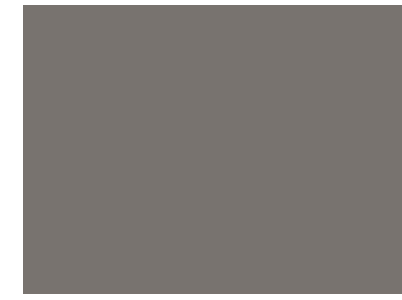








MATERIAL PALETTE

-  ASPHALT SHINGLES
-  FIBER CEMENT SIDING & TRIM
-  FIBER CEMENT SIDING & TRIM
-  FIBER CEMENT SIDING & TRIM
-  FIBER CEMENT SIDING & TRIM
-  FIBER CEMENT SIDING & TRIM
-  STONE

NOTE: THE ELEVATIONS ARE IN COMPLIANCE WITH THE PARKER AND PINE MIXED-USE DEVELOPMENT DESIGN STANDARDS.



**2** BUILDING 1  
PERSPECTIVE  
NTS



**1** BUILDING 1  
PERSPECTIVE  
NTS

**PARKER**  
COLORADO

Final Document  
Subject To Conditions In Approval Letter

APPROVED DATE: 07/16/2021

Planning Approval By: S. Nerger

**SEBREE Architects, Inc.**  
 97 Dover Street, Suite 400, Avon, Indiana 46123-7356  
 Phone (317) 272-7800 FAX (317) 272-7808  
 Web Site: <http://www.sebreearchitects.com>  
THESE PLANS AND SPECIFICATIONS ARE PROTECTED UNDER FEDERAL COPYRIGHT LAWS. © SEBREE ARCHITECTS, INC. ALL RIGHTS RESERVED.



**PARKER + PINE FILING #2**  
**LOTS 1-3**  
 MULTI-FAMILY PROJECT  
 PARKER, COLORADO

**NOT FOR CONSTRUCTION**

NO.	DATE	BY	DESCRIPTION
	04.19.21		COMMENT RESPONSES
	05.27.21		COMMENT RESPONSES

DATE	DRAWN BY
PROJECT NO. 20013	CHECKED BY
BUILDING 1 COLORED ELEVATIONS	

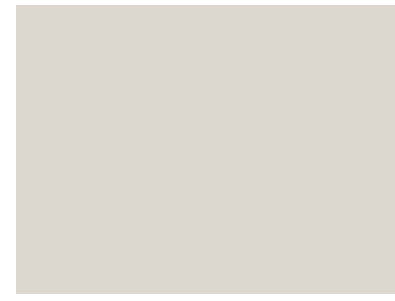
MATERIAL PALETTE



ASPHALT SHINGLES



FIBER CEMENT SIDING & TRIM



FIBER CEMENT SIDING & TRIM



FIBER CEMENT SIDING & TRIM



FIBER CEMENT SIDING & TRIM



STONE

GLAZING INFORMATION (NON GARAGE AREAS)

FIRST FLOOR: 26%  
TYPICAL UPPER LEVEL: 25%

NOTE: THE ELEVATIONS ARE IN COMPLIANCE WITH THE PARKER AND PINE MIXED-USE DEVELOPMENT DESIGN STANDARDS.



**4** BUILDING 2 EAST ELEVATION  
NTS



**3** BUILDING 2 SOUTH ELEVATION  
NTS



**2** BUILDING 2 NORTH ELEVATION  
NTS



**1** BUILDING 2 WEST ELEVATION  
NTS



Final Document  
Subject To Conditions In Approval Letter

APPROVED DATE: 07/16/2021

Planning Approval By: S. Nerger

SEBREE Architects, Inc.  
97 Dover Street, Suite 400, Avon, Indiana 46123-7356  
Phone (317) 272-7800 FAX (317) 272-7808  
Web Site: <http://www.sebreearchitects.com>



PARKER + PINE FILING #2  
LOTS 1-3  
MULTI-FAMILY PROJECT  
PARKER, COLORADO

NOT FOR CONSTRUCTION

NO.	DATE	BY	DESCRIPTION
			COMMENT RESPONSES
			COMMENT RESPONSES
04.19.21			
05.27.21			

DATE	DRAWN BY
PROJECT NO. 20013	CHECKED BY
BUILDING 2 COLORED ELEVATIONS	

MATERIAL PALETTE



ASPHALT SHINGLES

FIBER CEMENT SIDING & TRIM

FIBER CEMENT SIDING & TRIM

FIBER CEMENT SIDING & TRIM

FIBER CEMENT SIDING & TRIM

STONE

NOTE: THE ELEVATIONS ARE IN COMPLIANCE WITH THE PARKER AND PINE MIXED-USE DEVELOPMENT DESIGN STANDARDS.



**2** BUILDING 2 PERSPECTIVE  
NTS



**1** BUILDING 2 PERSPECTIVE  
NTS

**PARKER COLORADO**  
Final Document  
Subject To Conditions In Approval Letter  
APPROVED DATE: 07/16/2021  
Planning Approval By: S. Nerger

**SEBREE Architects, Inc.**  
97 Dover Street, Suite 400, Avon, Indiana 46123-7356  
Phone (317) 272-7800 FAX (317) 272-7808  
Web Site: <http://www.sebreearchitects.com>



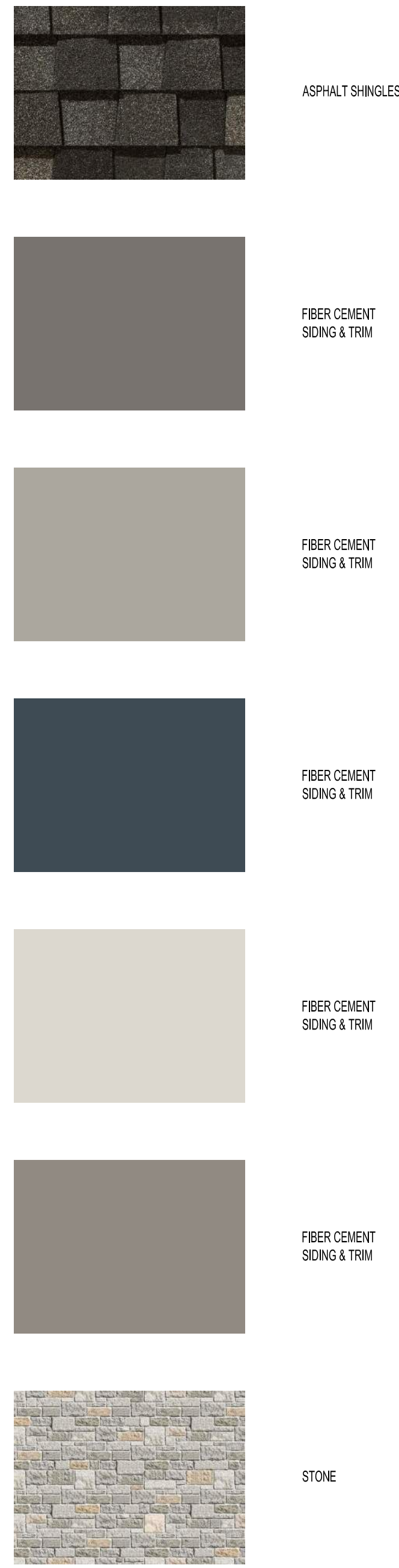
PARKER + PINE FILING #2  
LOTS 1-3  
MULTI-FAMILY PROJECT  
PARKER, COLORADO

**NOT FOR CONSTRUCTION**

NO.	DATE	BY	DESCRIPTION
	04.19.21		COMMENT RESPONSES
	05.27.21		COMMENT RESPONSES

DATE	DRAWN BY
PROJECT NO. 20013	CHECKED BY
BUILDING 2 COLORED ELEVATIONS	

MATERIAL PALETTE



GLAZING INFORMATION

FIRST FLOOR:	27%
SECOND FLOOR:	26%
TYPICAL UPPER LEVEL:	26%

NOTE: THE ELEVATIONS ARE IN COMPLIANCE WITH THE PARKER AND PINE MIXED-USE DEVELOPMENT DESIGN STANDARDS.



**4** BUILDING 3 WEST ELEVATION  
NTS



**3** BUILDING 3 SOUTH ELEVATION  
NTS



**2** BUILDING 3 NORTH ELEVATION  
NTS



**1** BUILDING 3 EAST ELEVATION  
NTS

**PARKER COLORADO**  
Final Document  
Subject To Conditions In Approval Letter  
APPROVED DATE: 07/16/2021  
Planning Approval By: S. Nerger

**SEBREE Architects, Inc.**  
97 Dover Street, Suite 400, Avon, Indiana 46123-7356  
Phone (317) 272-7800 FAX (317) 272-7808  
Web Site: <http://www.sebreearchitects.com>



PARKER + PINE FILING #2  
LOTS 1-3  
MULTI-FAMILY PROJECT  
PARKER, COLORADO

NOT FOR CONSTRUCTION

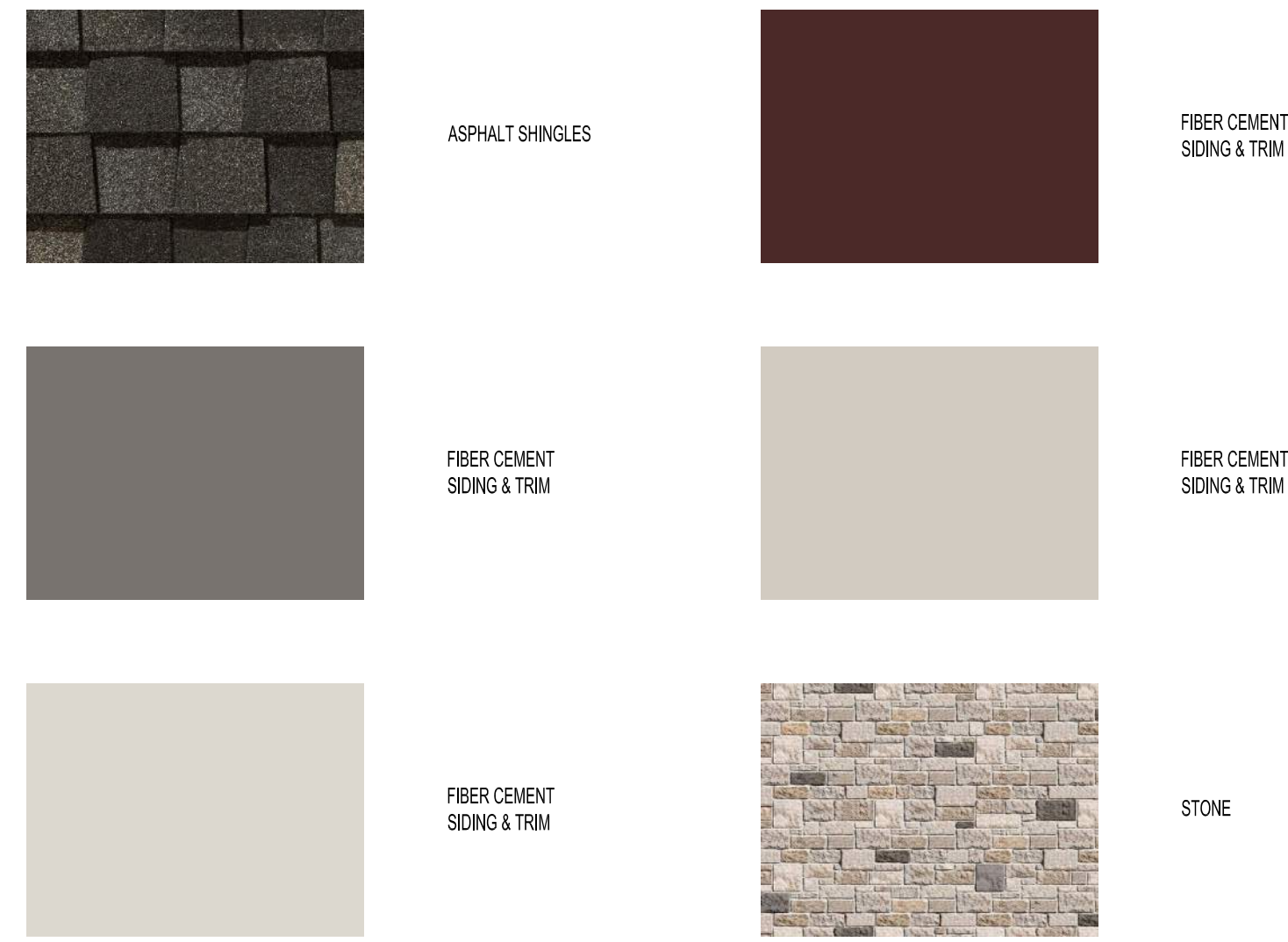
NO.	DATE	DESCRIPTION
		COMMENT RESPONSES
		COMMENT RESPONSES
04.19.21		
05.27.21		

DATE: \_\_\_\_\_ DRAWN BY: \_\_\_\_\_  
PROJECT NO. 20013 CHECKED BY: \_\_\_\_\_

BUILDING 3  
COLORED ELEVATIONS



MATERIAL PALETTE



GLAZING INFORMATION (NON GARAGE AREAS)  
 FIRST FLOOR NON-GARAGE AREAS: 31%  
 TYPICAL UPPER LEVEL: 28%

HEIGHT INFORMATION  
 APPROXIMATELY 56' ABOVE GRADE

NOTE: THE ELEVATIONS ARE IN COMPLIANCE WITH THE PARKER AND PINE MIXED-USE DEVELOPMENT DESIGN STANDARDS.



**5** BUILDING 4 WEST ELEVATION  
 NTS



**4** BUILDING 4 SOUTH ELEVATION  
 NTS



**3** BUILDING 4 NORTH ELEVATION  
 NTS



**2** BUILDING 4 COURTYARD ELEVATION  
 NTS



**1** BUILDING 4 EAST ELEVATION  
 NTS

SEBREE Architects, Inc.  
 97 Dover Street, Suite 400, Avon, Indiana 46123-7356  
 Phone (317) 272-7800 FAX (317) 272-7808  
 Web Site: <http://www.sebreearchitects.com>



PARKER + PINE FILING #2  
 LOTS 1-3  
 MULTI-FAMILY PROJECT  
 PARKER, COLORADO

NOT FOR CONSTRUCTION

NO.	DATE	BY	DESCRIPTION
04.19.21			COMMENT RESPONSES
05.27.21			COMMENT RESPONSES

DATE: 07/16/2021  
 APPROVED DATE: 07/16/2021  
 Planning Approval By: S. Neger

PROJECT NO: 20013  
 BUILDING 4 COLORED ELEVATIONS