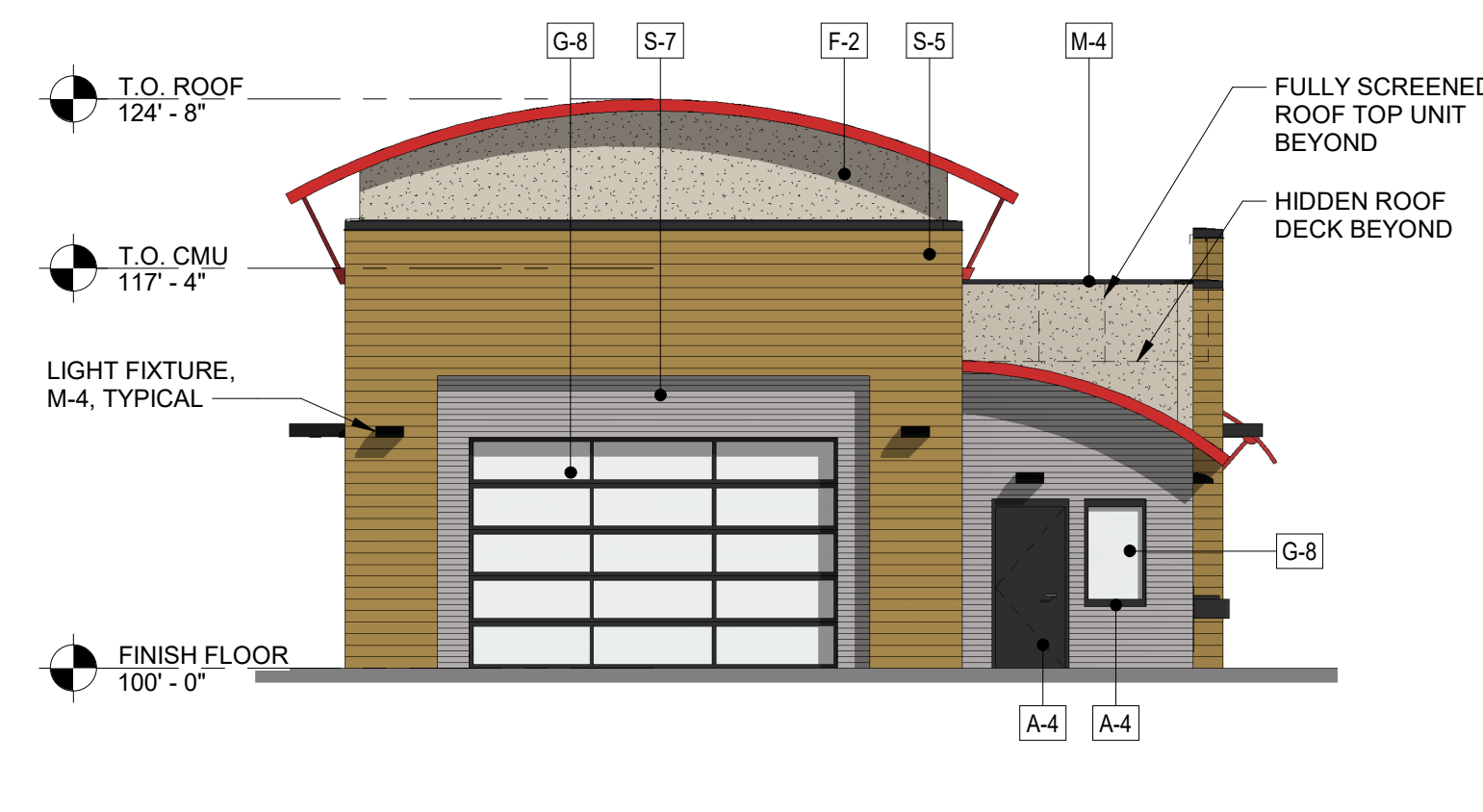
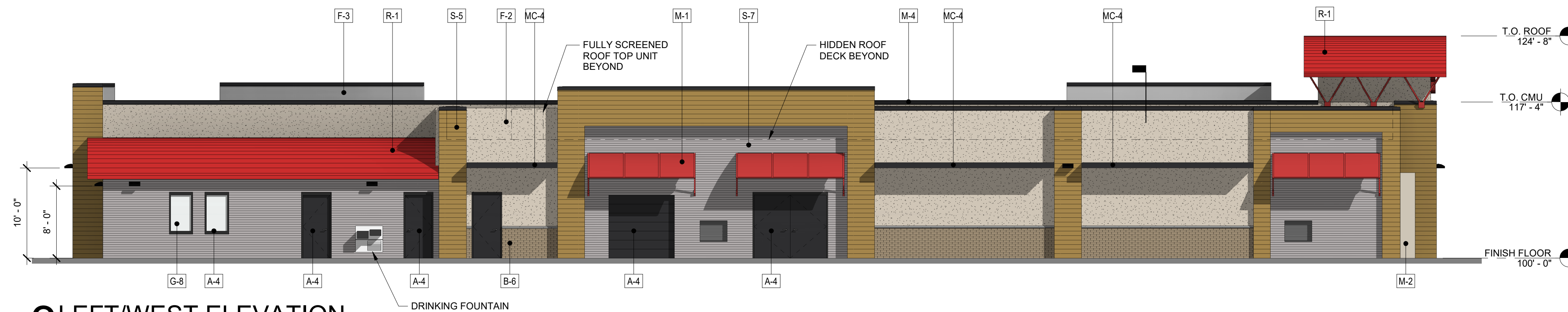
 **1 FLOOR PLAN**
1/8" = 1'-0"



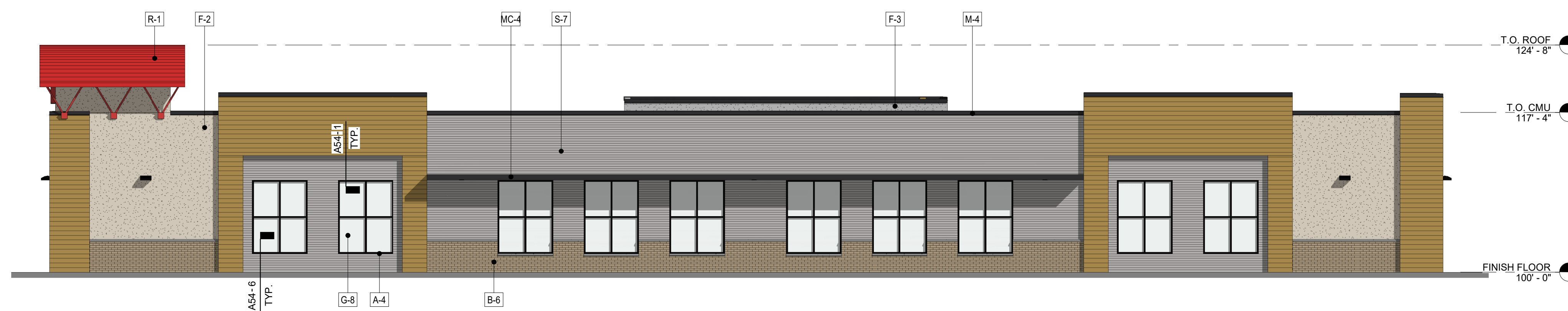
1 EXIT/SOUTH ELEVATION
1/8" = 1'-0"



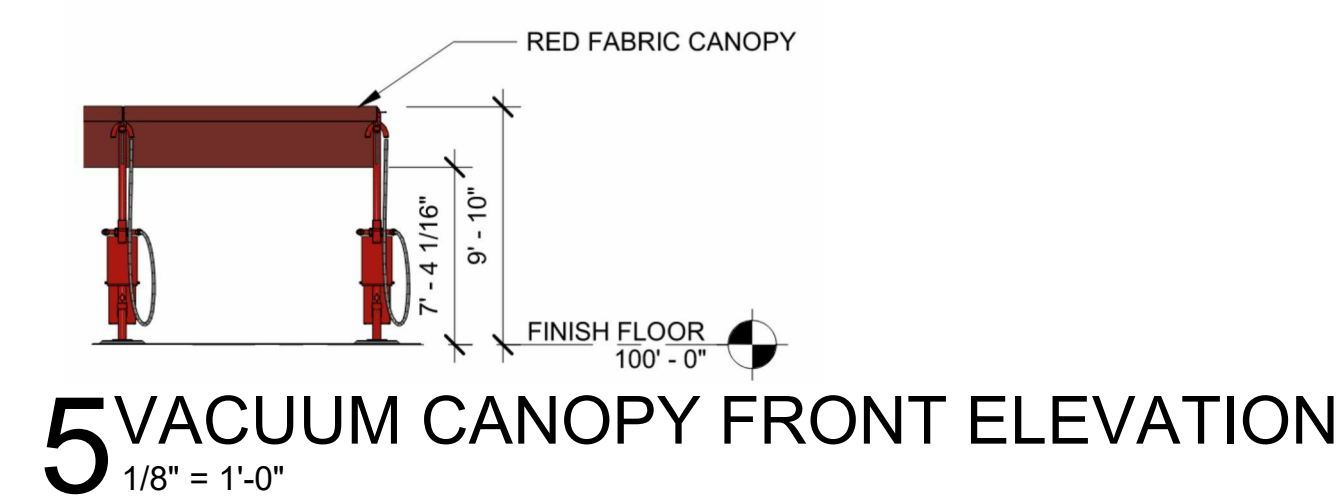
2 ENTRY/NORTH ELEVATION
1/8" = 1'-0"



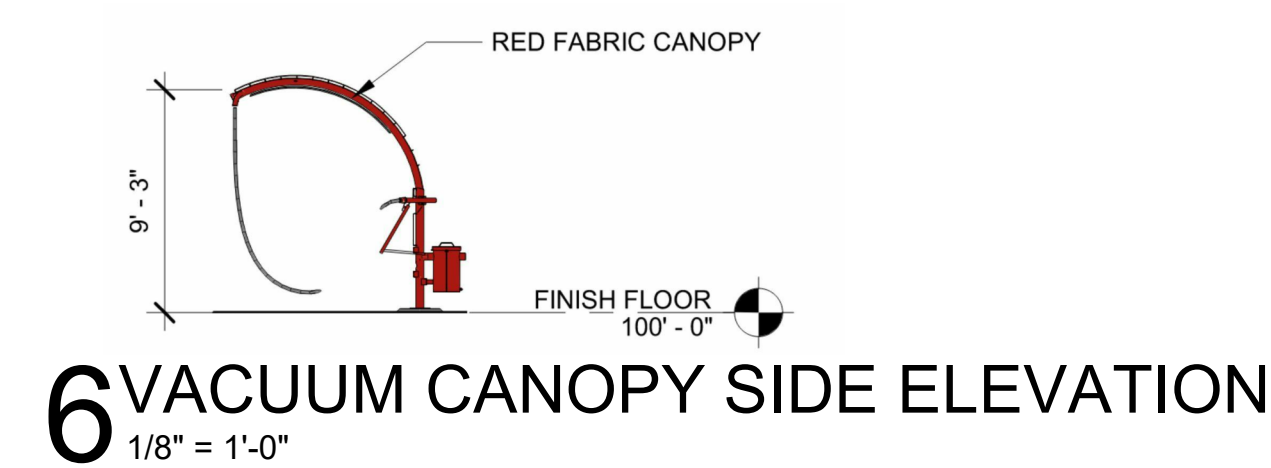
3 LEFT/WEST ELEVATION
1/8" = 1'-0"



4 RIGHT/EAST ELEVATION
1/8" = 1'-0"



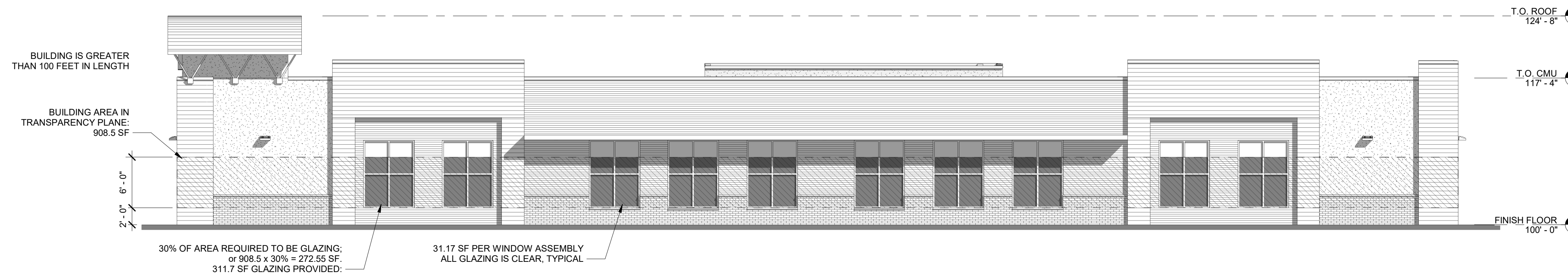
5 VACUUM CANOPY FRONT ELEVATION
1/8" = 1'-0"



6 VACUUM CANOPY SIDE ELEVATION
1/8" = 1'-0"

MATERIALS & FINISH SCHEDULE:

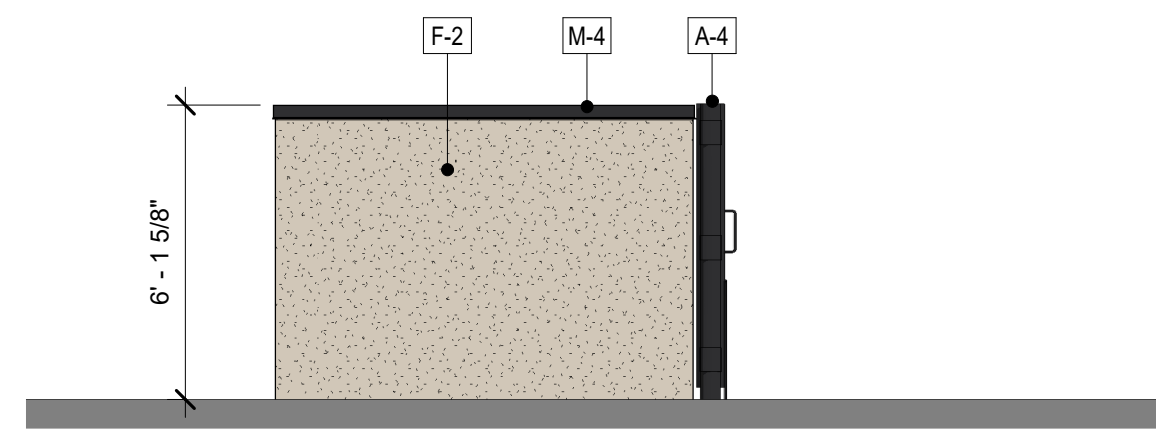
X	MATERIAL	PERCENTAGES				X	FINISH/COLOR
		N	S	E	W		
	M-1 METAL CANOPIES	0%	0%	0%	10%	1	QUICK N' CLEAN RED: BENAJMIN MOORE 2001-01 "RUBY RED"
	M-2 METAL SES	(EQUIPMENT, NOT INCLUDED)				2	SHERWIN WILLIAMS 7036 "ACCESSIBLE BEIGE"
	M-4 METAL COPING	2%	2%	3%	4%	3	SHERWIN WILLIAMS 7067 "CITY SCAPE"
	MC-4 METAL CANOPIES	0%	0%	2%	2%	4	SHERWIN WILLIAMS 6990 "CAVIAR"
	F-2 STUCCO	18%	31%	12%	27%	5	HARDIE BOARD SIDING KAHKI BROWN
	F-3 STUCCO	0%	0%	1%	3%	6	GENERAL SHALE "PEPPERMILL"
	S-5 HARDIE BOARD SIDING	36%	38%	20%	19%	7	HARDIE BOARD SIDING NIGHT GREY
	S-7 HARDIE BOARD SIDING	20%	7%	36%	22%	8	VITRO GLASS SOLARBAN 70XL CLEAR GLASS
	A-4 PAINTED ALUMINUM AT WINDOWS AND PAINTED HOLLOW METAL AT DOORS	24%	18%	16%	7%		(INCLUDES WINDOW GLAZING)
	B-6 BRICK VENEER	0%	4%	10%	6%		
	R-1 STANDING SEAM METAL ROOF						
	G-8 CLEAR GLAZING						



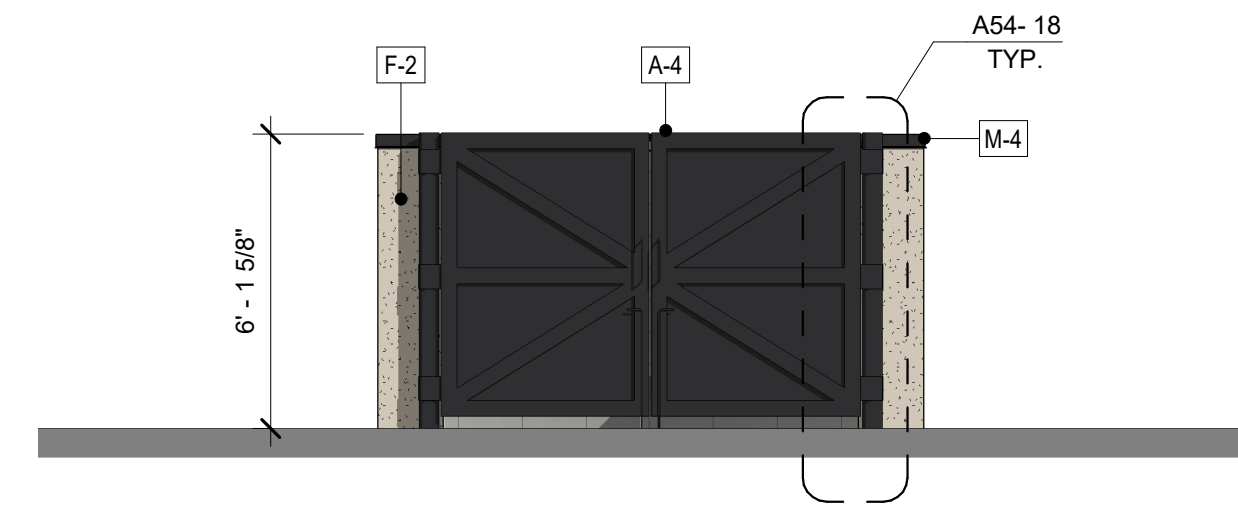
1 RIGHT/EAST ELEVATION TRANSPARENCY DIAGRAM
1/8" = 1'-0"



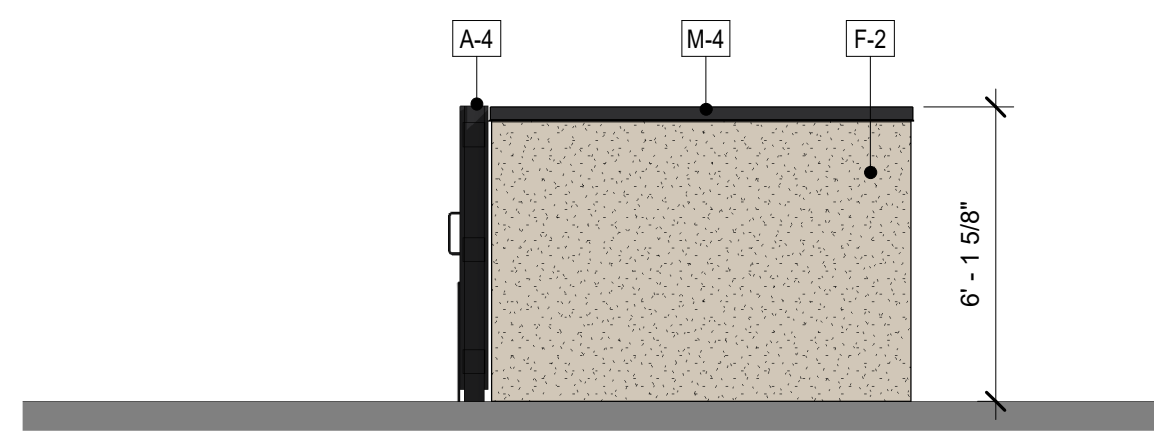
2 EXIT/SOUTH ELEVATION TRANSPARENCY DIAGRAM
1/8" = 1'-0"



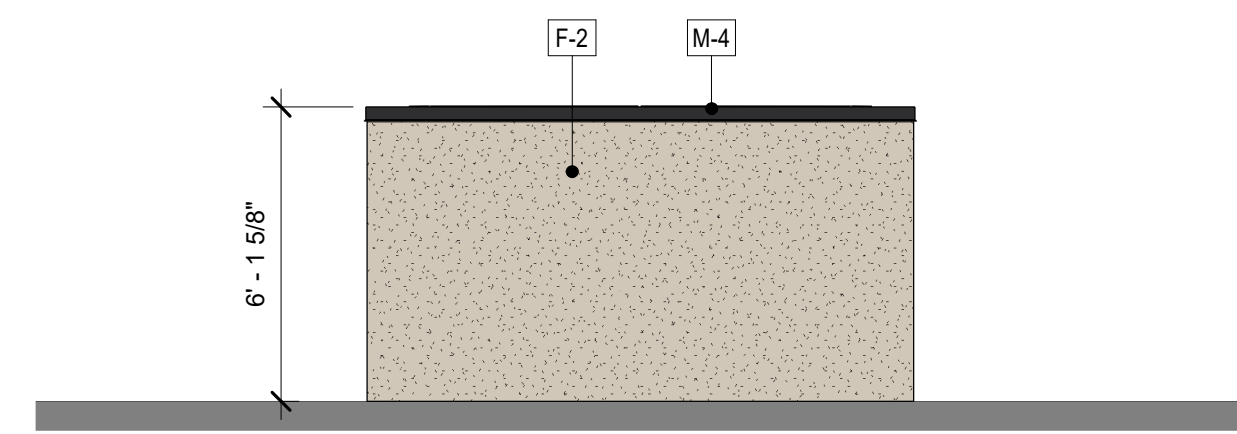
1 TRASH ENCLOSURE LEFT SIDE ELEVATION
1/4" = 1'-0"



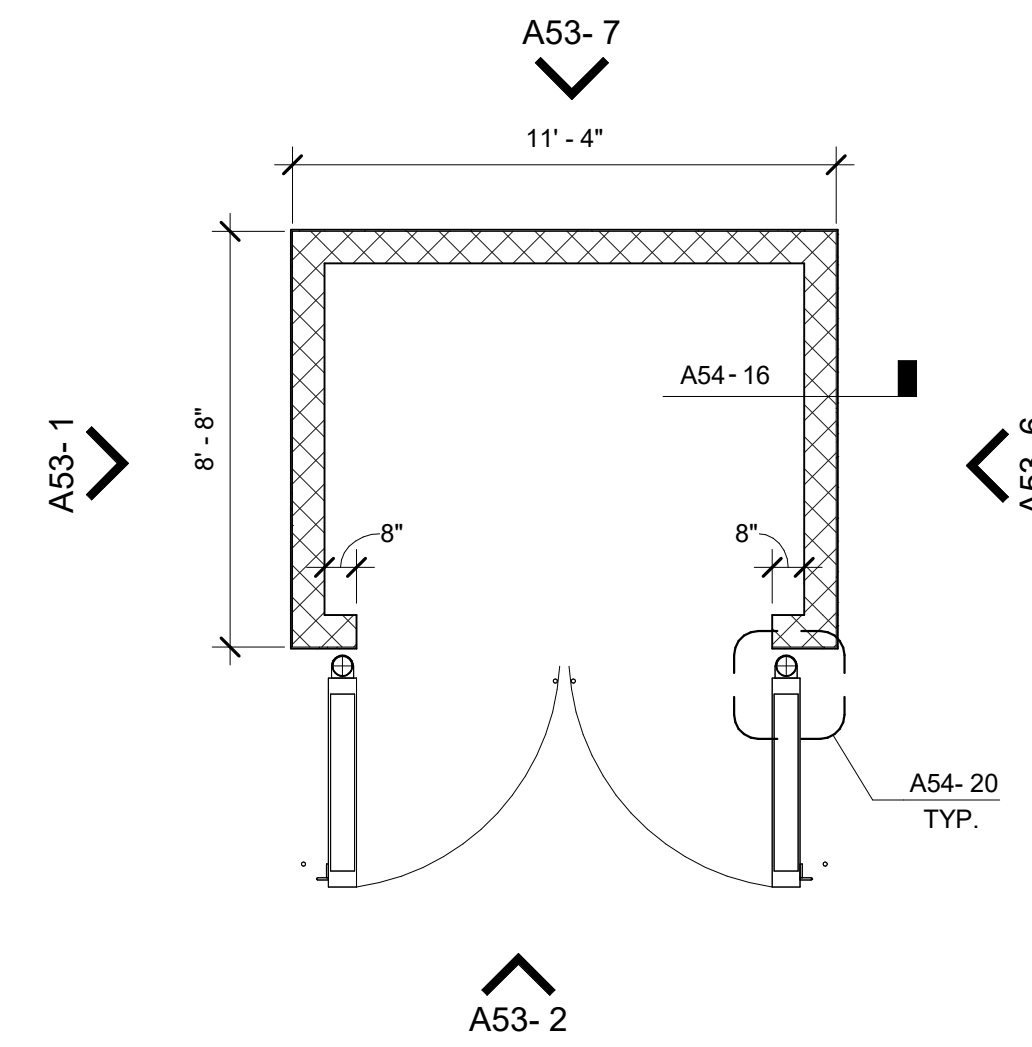
2 TRASH ENCLOSURE FRONT ELEVATION
1/4" = 1'-0"



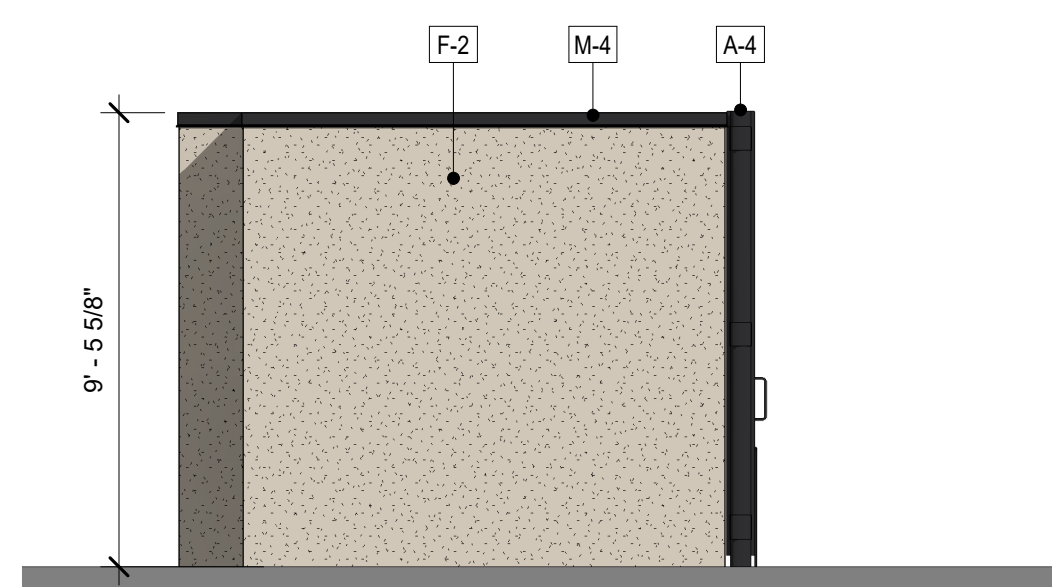
6 TRASH ENCLOSURE RIGHT SIDE ELEVATION
1/4" = 1'-0"



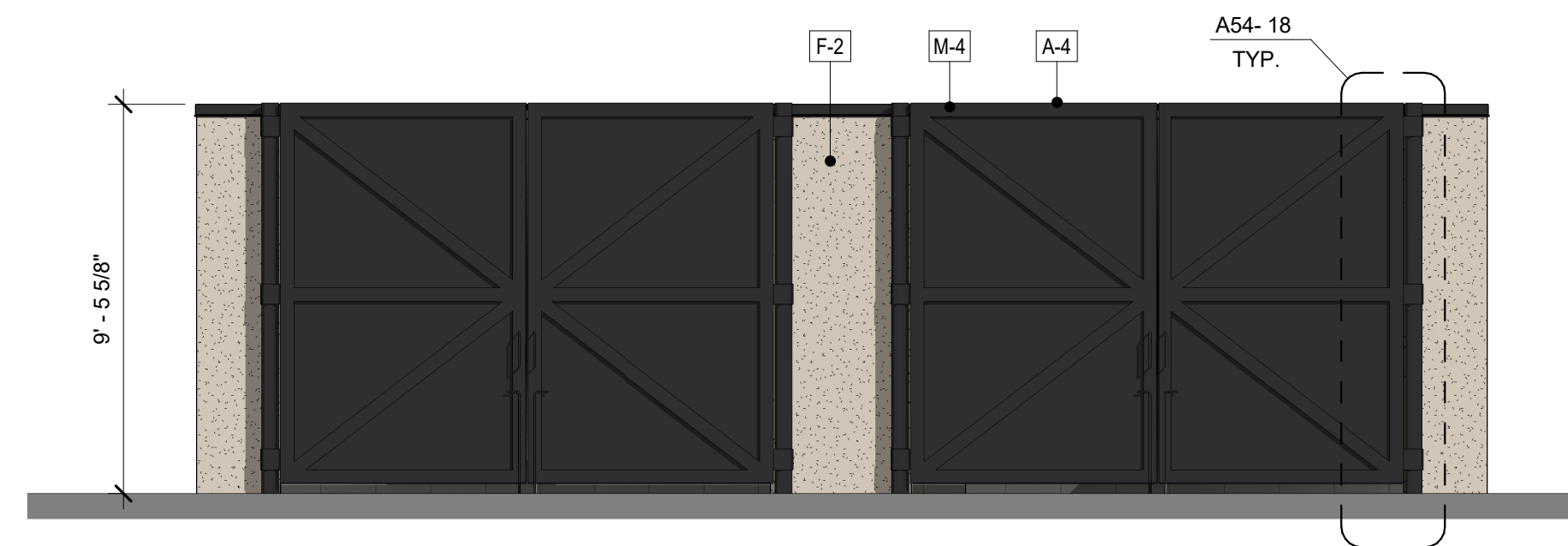
7 TRASH ENCLOSURE REAR ELEVATION
1/4" = 1'-0"



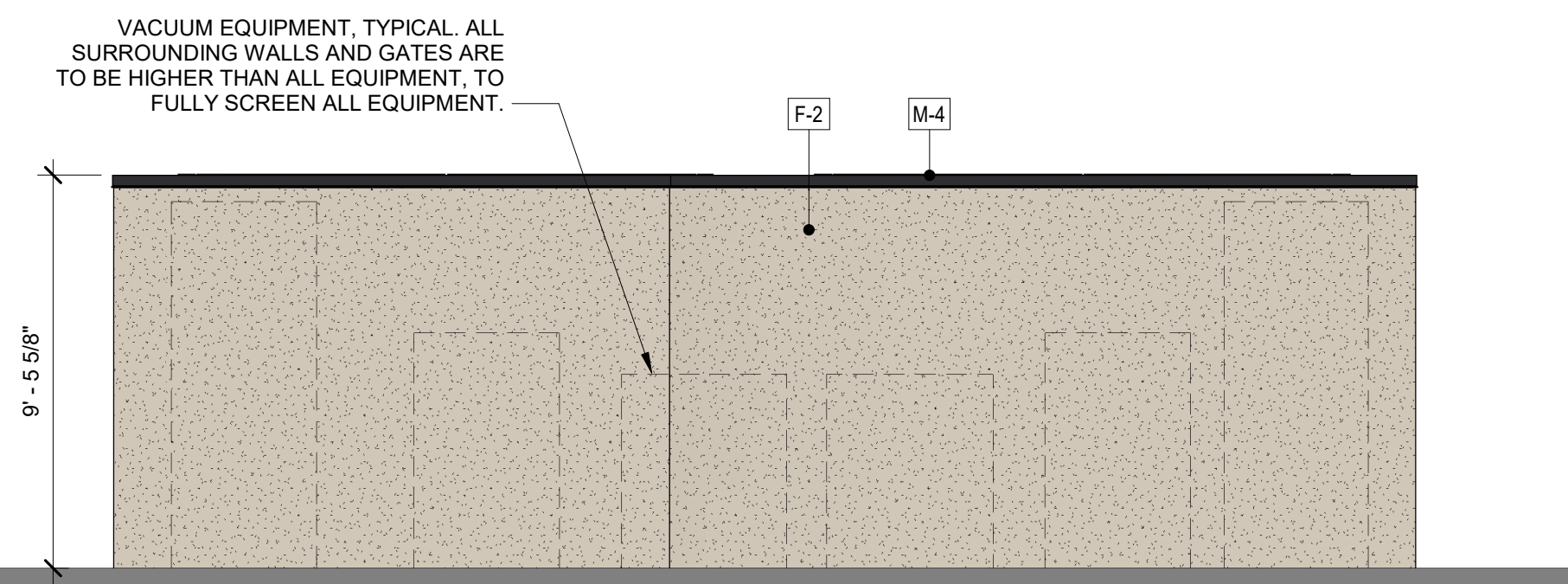
8 TRASH ENCLOSURE PLAN
1/4" = 1'-0"



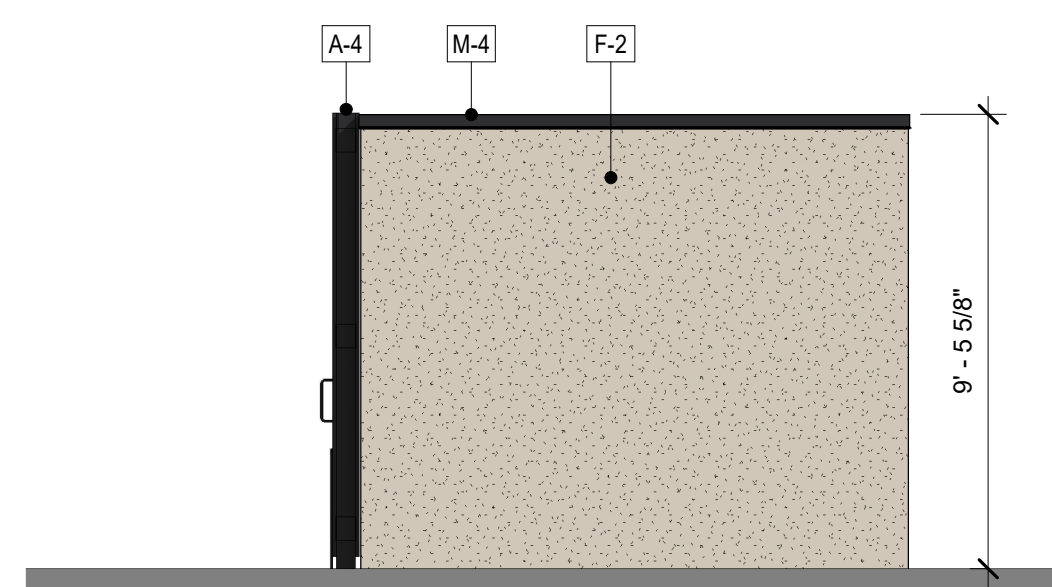
11 VACUUM ENCLOSURE LEFT SIDE ELEVATION
1/4" = 1'-0"



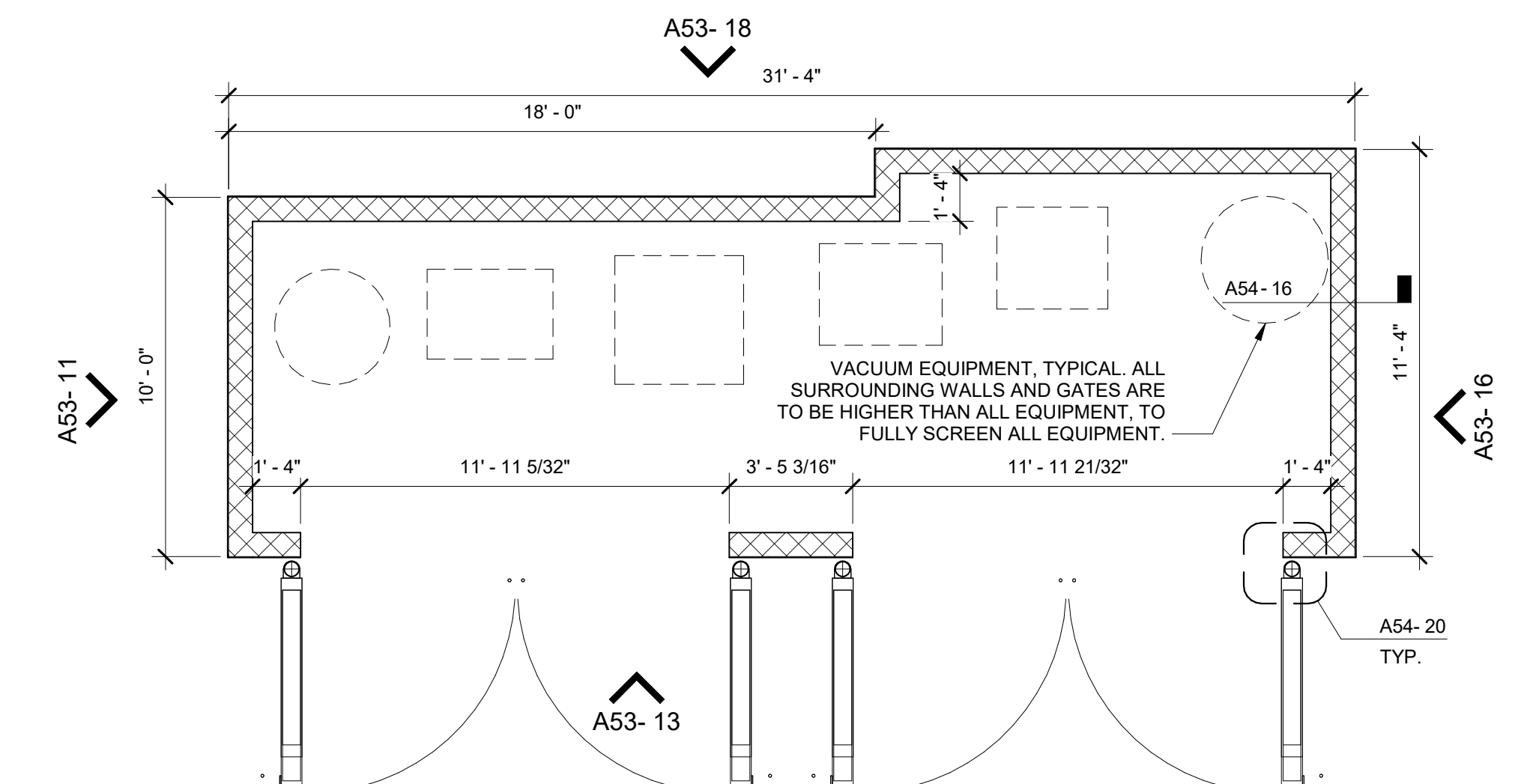
13 VACUUM ENCLOSURE FRONT ELEVATION
1/4" = 1'-0"



18 VACUUM ENCLOSURE REAR ELEVATION
1/4" = 1'-0"



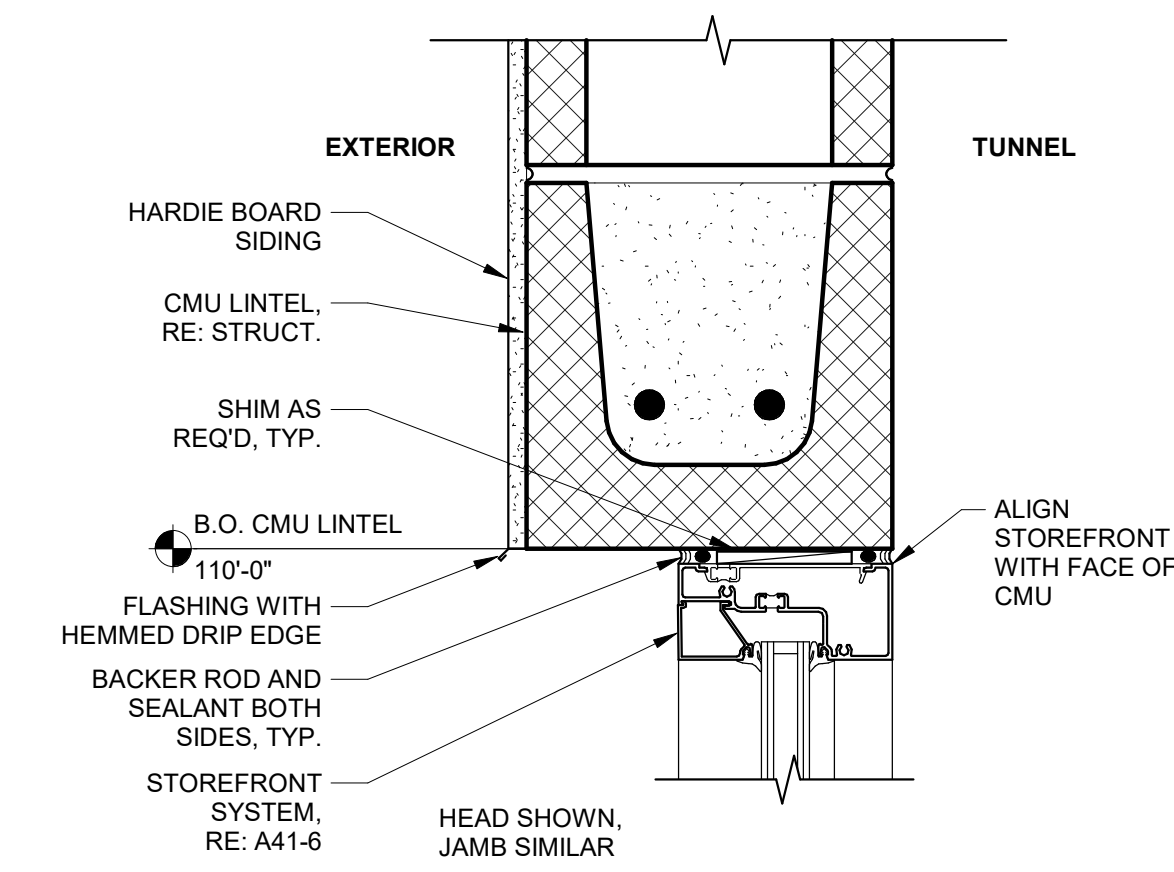
16 VACUUM ENCLOSURE RIGHT SIDE ELEVATION
1/4" = 1'-0"



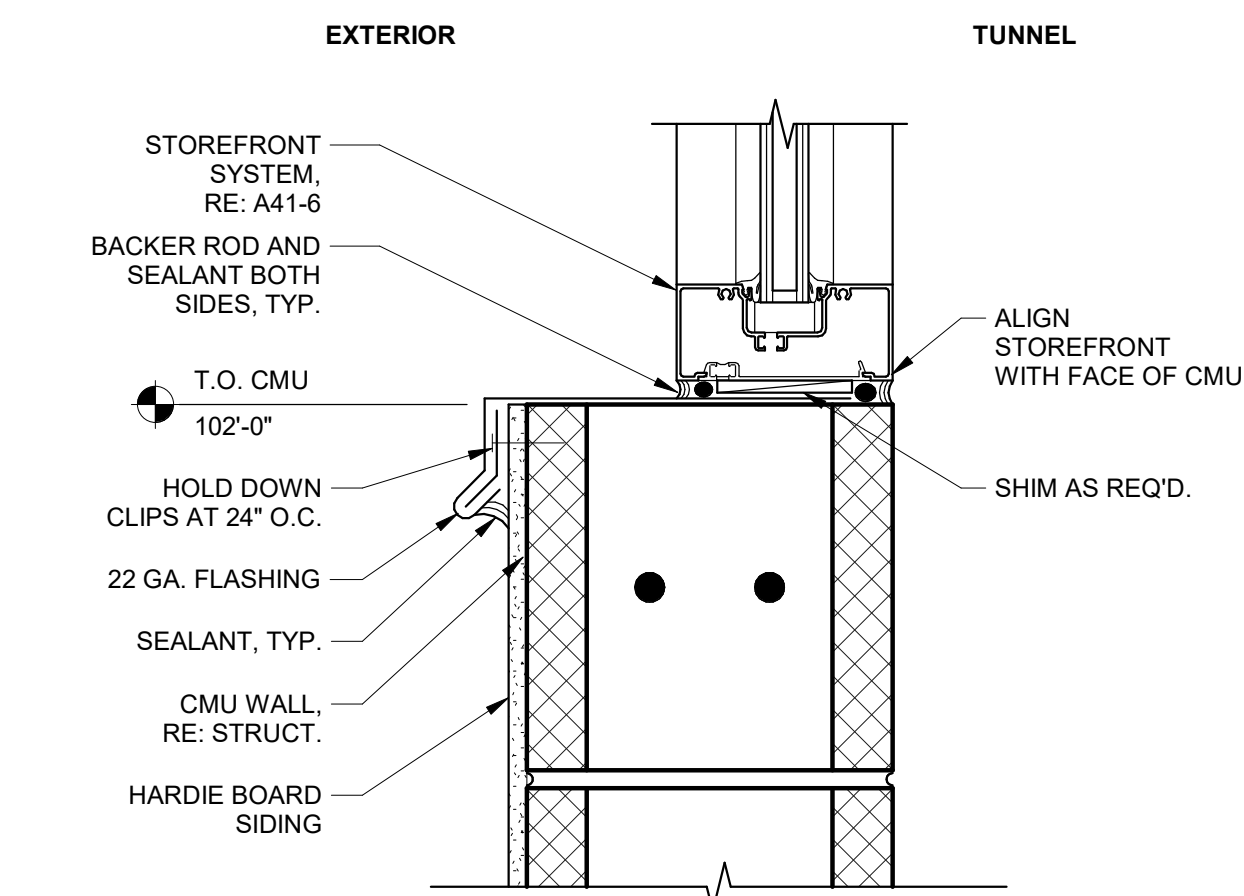
19 VACUUM ENCLOSURE PLAN
1/4" = 1'-0"

MATERIALS & FINISH SCHEDULE:

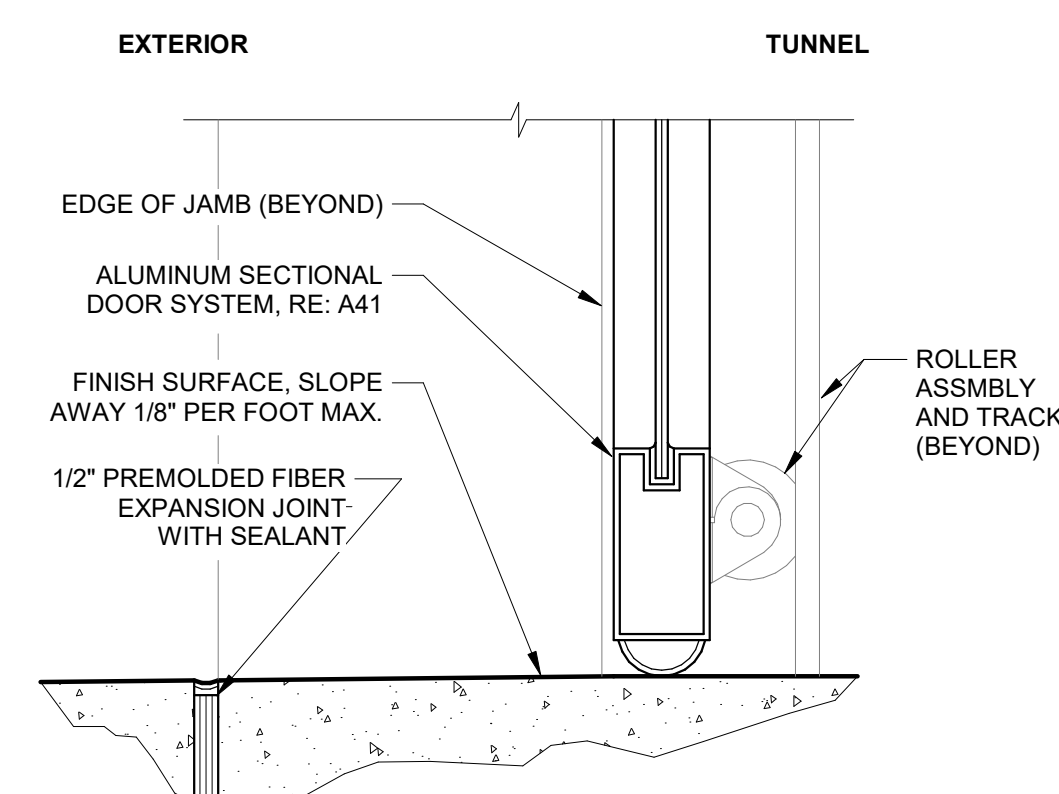
X	MATERIAL	PERCENTAGES				X	FINISH/COLOR
		N	S	E	W		
	M-1 METAL CANOPIES	0%	0%	0%	10%	1	QUICK N' CLEAN RED: BENAJMIN MOORE 2001-01 "RUBY RED"
	M-2 METAL SES	(EQUIPMENT, NOT INCLUDED)				2	SHERWIN WILLIAMS 7036 "ACCESIBLE BEIGE"
	M-4 METAL COPING	2%	2%	3%	4%	3	SHERWIN WILLIAMS 7067 "CITY SCAPE"
	MC-4 METAL CANOPIES	0%	0%	2%	2%	4	SHERWIN WILLIAMS 6990 "CAVIAR"
	F-2 STUCCO	18%	31%	12%	27%	5	HARDIE BOARD SIDING KAHKI BROWN
	F-3 STUCCO	0%	0%	1%	3%	6	GENERAL SHALE "PEPPERMILL"
	S-5 HARDIE BOARD SIDING	36%	38%	20%	19%	7	HARDIE BOARD SIDING NIGHT GREY
	S-7 HARDIE BOARD SIDING	20%	7%	36%	22%	8	VITRO GLASS SOLARBAN 70XL. CLEAR GLASS
	A-4 PAINTED ALUMINUM AT WINDOWS AND PAINTED HOLLOW METAL AT DOORS	24%	18%	16%	7%		(INCLUDES WINDOW GLAZING)
	B-6 BRICK VENEER	0%	4%	10%	6%		
	R-1 STANDING SEAM METAL ROOF						
	G-8 CLEAR GLAZING						



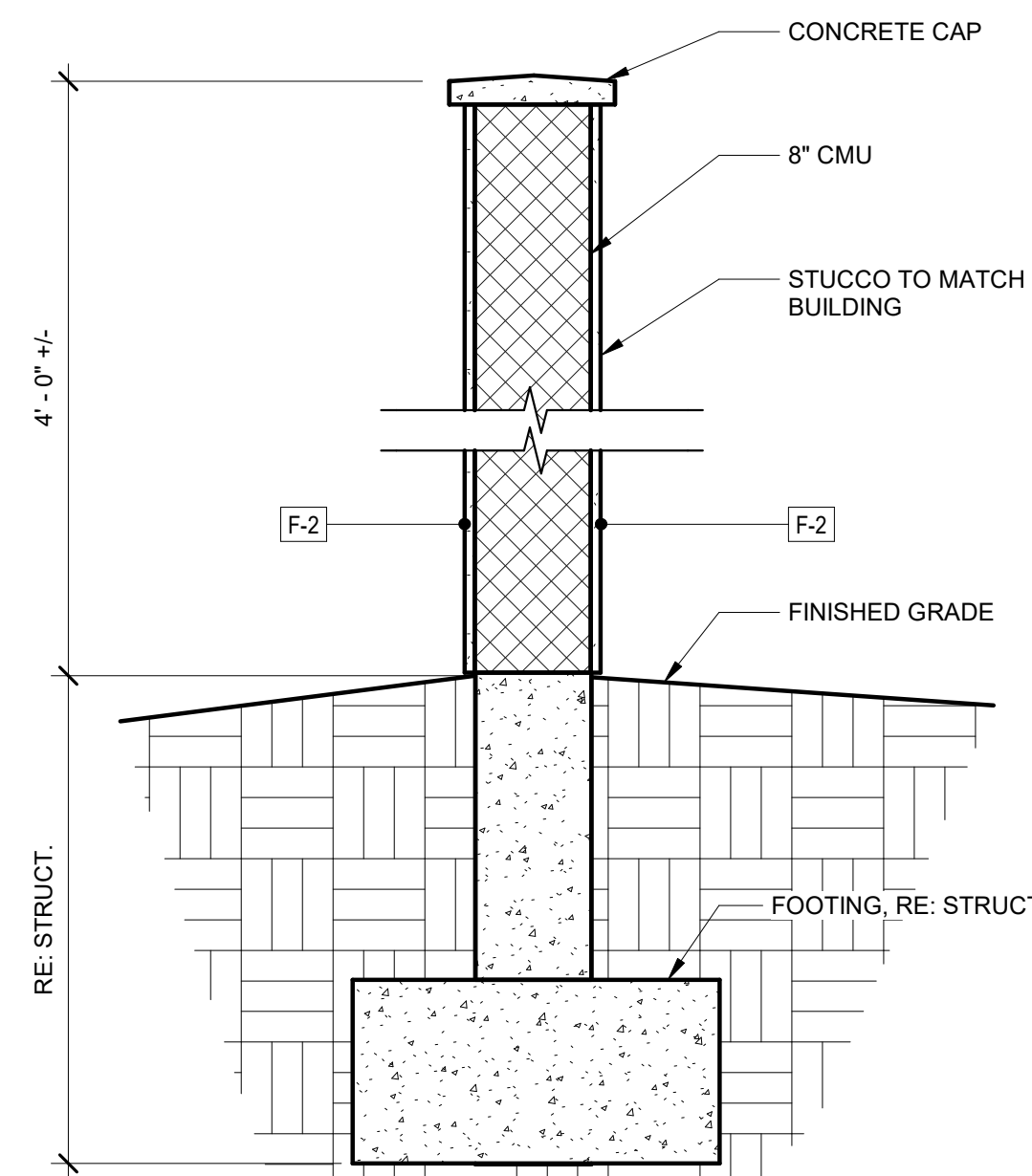
1 STOREFRONT HEAD - JAMB
3" = 1'-0"



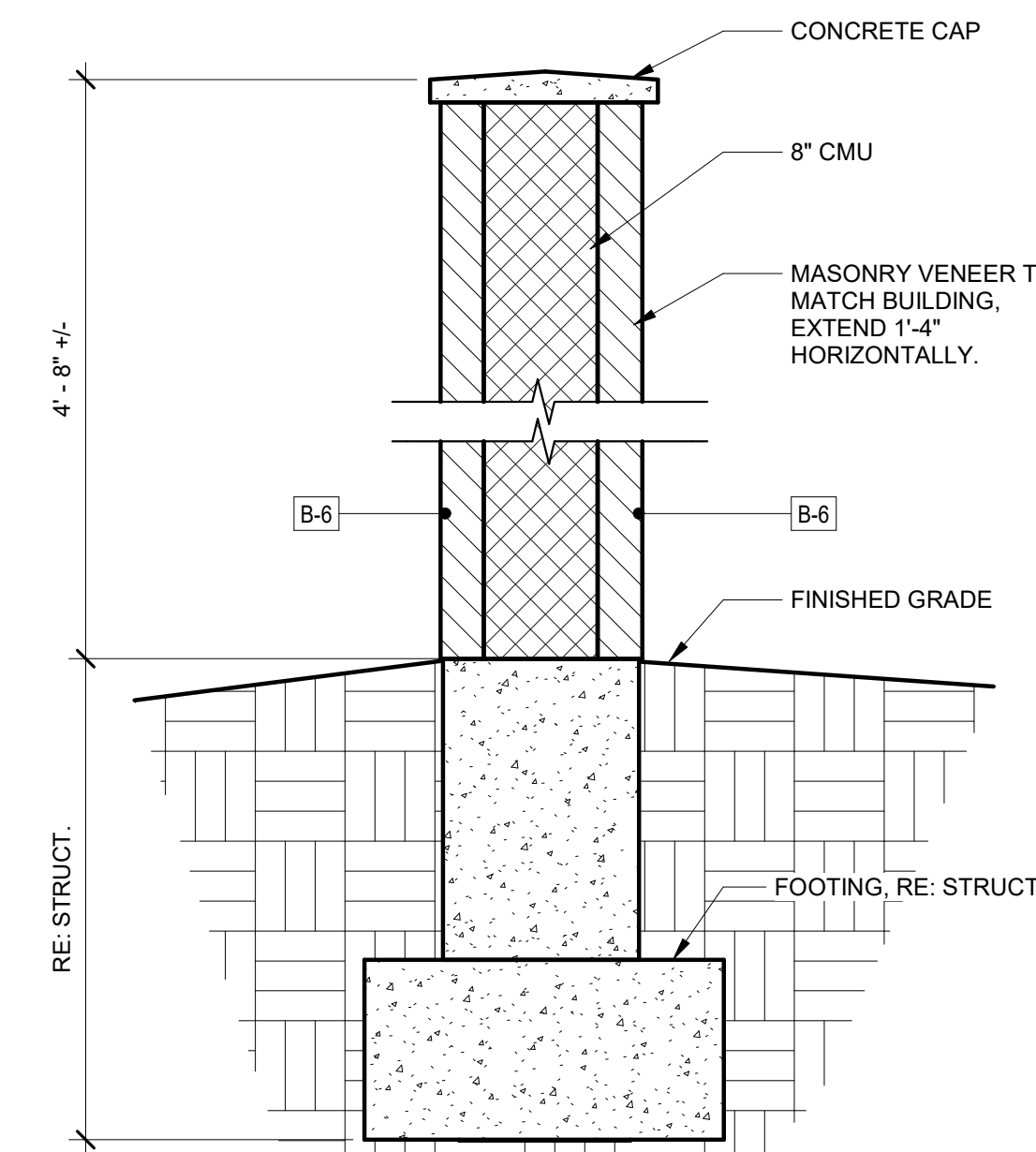
6 STOREFRONT SILL
3" = 1'-0"



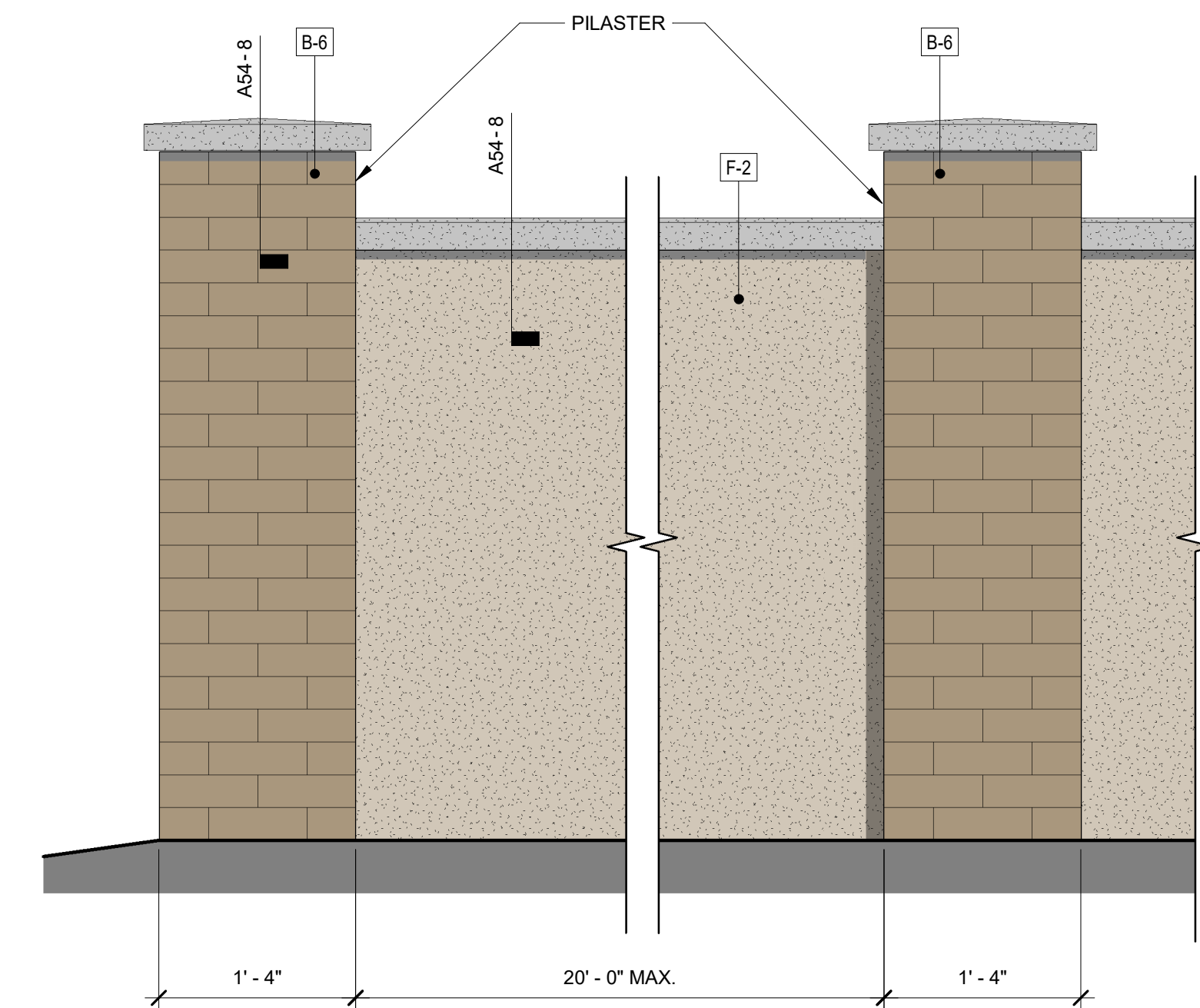
7 SECTIONAL DOOR SILL
3" = 1'-0"



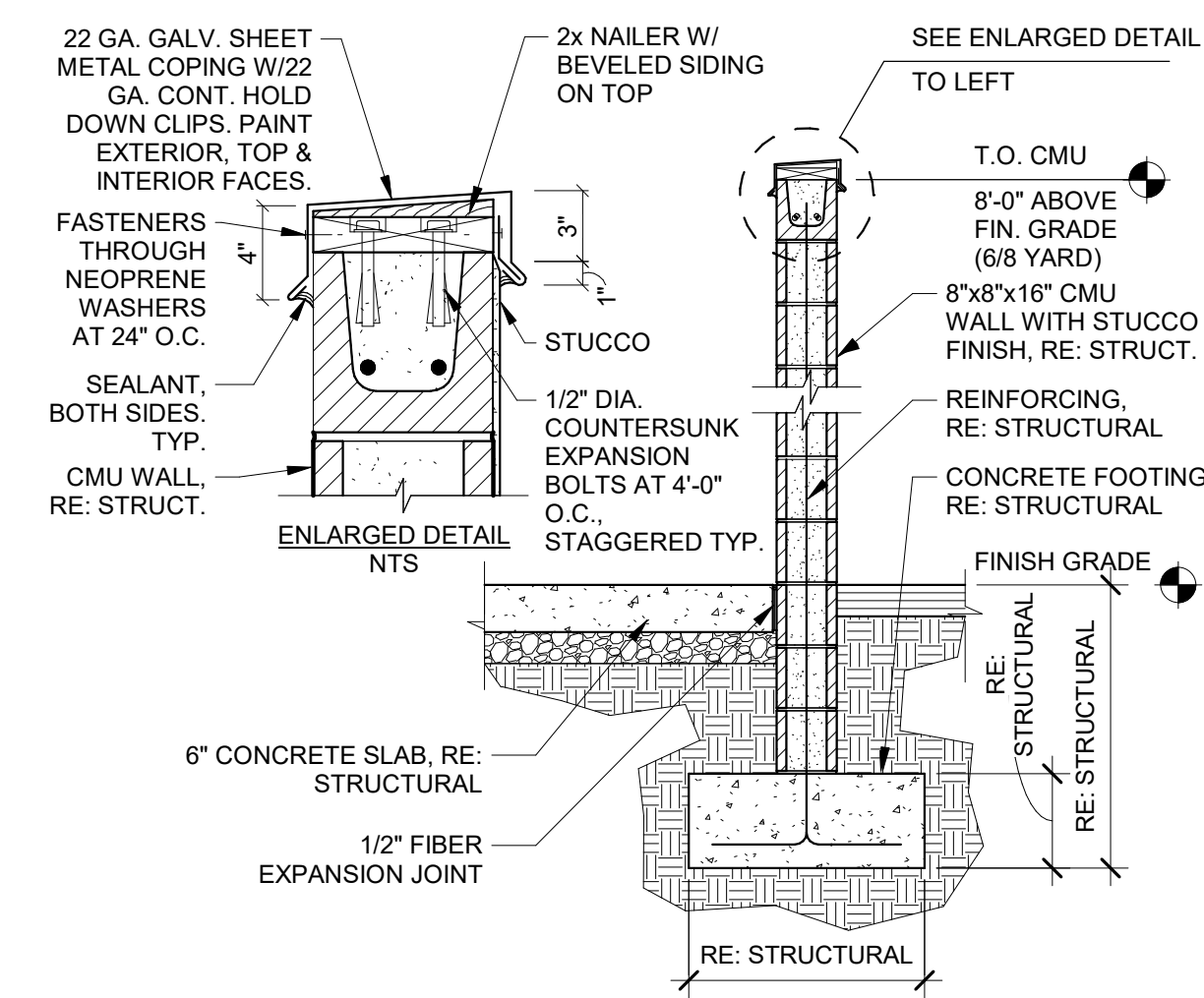
8 SCREEN WALL
1" = 1'-0"



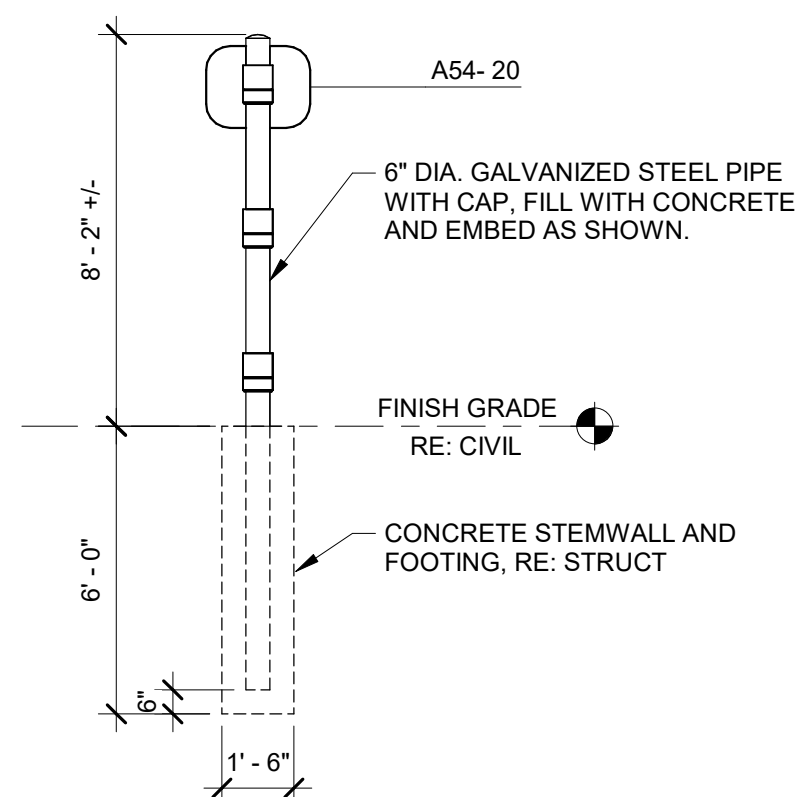
AT PILASTER LOCATIONS
PILASTERS LOCATED AT WALL ENDS AND AT 20'-0" ON CENTER, MAXIMUM.



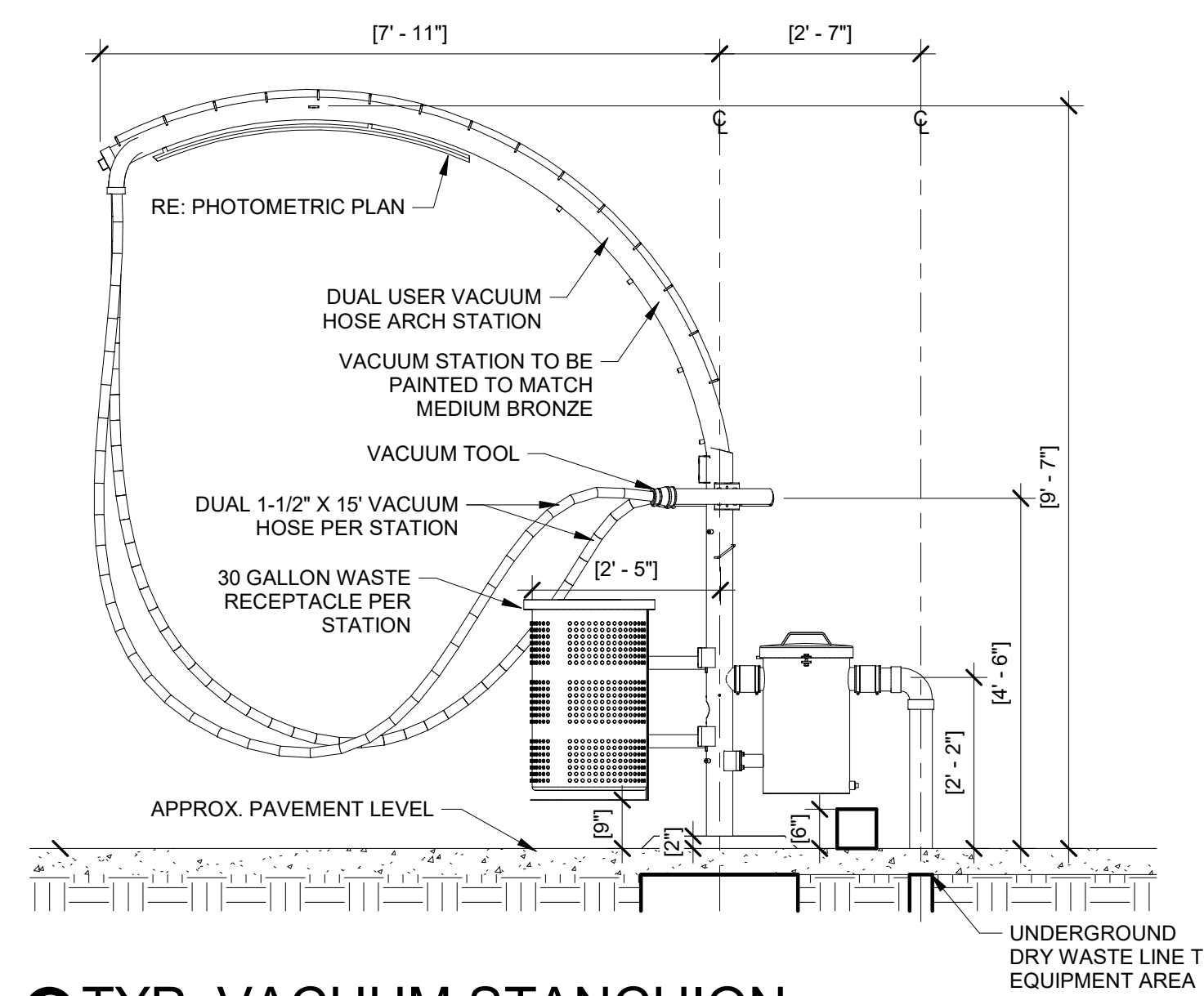
10 SITE WALL ELEVATION
1" = 1'-0"



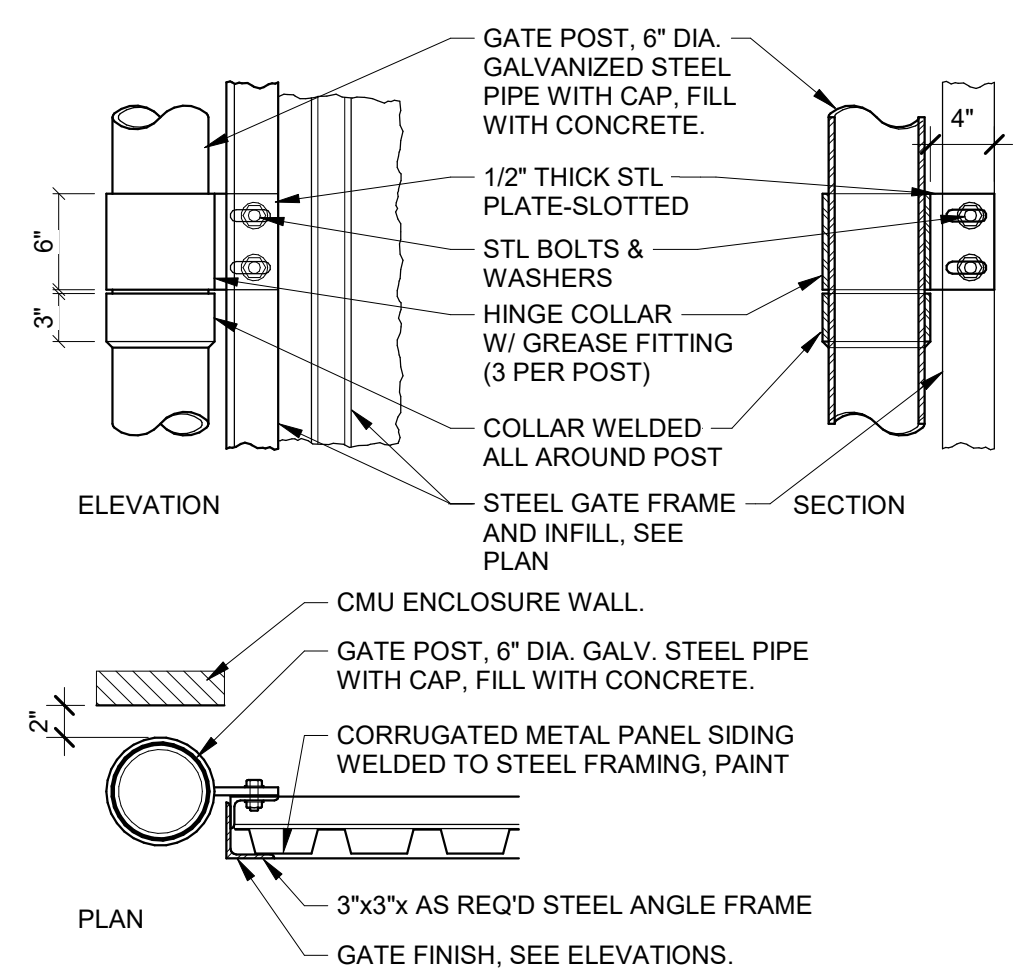
16 TRASH ENCLOSURE SECTION
1/2" = 1'-0"



18 GATE POST
1/4" = 1'-0"



19 TYP. VACUUM STANCHION
12" = 1'-0"



20 GATE DETAILS
1" = 1'-0"