

GENERAL NOTES

- CONTRACTOR IS RESPONSIBLE FOR ENSURING THAT ALL PROPOSED LANDSCAPING IS INSTALLED IN ACCORDANCE WITH PLANS, DETAILS, SPECIFICATIONS (IF APPLICABLE) AND ALL LOCAL CODES AND REQUIREMENTS.
- CONTRACTOR TO INSPECT SITE AND VERIFY CONDITIONS AND DIMENSIONING PRIOR TO PROCEEDING WITH WORK DESCRIBED HERE IN. NOTIFY LANDSCAPE ARCHITECT OF ANY DISCREPANCIES PRIOR TO BEGINNING ANY CONSTRUCTION.
- QUANTITIES PROVIDED IN THE PLANT LIST ARE FOR GENERAL USE ONLY. CONTRACTOR IS RESPONSIBLE FOR VERIFICATION OF ALL PLANT AND LANDSCAPE MATERIAL QUANTITIES. SYMBOL COUNT ON PLAN TAKES PRECEDENCE OVER TABLE QUANTITIES.
- IMMEDIATELY AFTER AWARD OF CONTRACT, NOTIFY THE OWNER'S REPRESENTATIVE AND/OR THE LANDSCAPE ARCHITECT OF UNAVAILABILITY OF SPECIFIED PLANT MATERIAL FROM COMMERCIAL NURSERIES. THE OWNER'S REPRESENTATIVE AND/OR LANDSCAPE ARCHITECT WILL PROVIDE ALTERNATE PLANT MATERIAL SELECTIONS IF UNAVAILABILITY OCCURS. SUCH CHANGES SHALL NOT ALTER THE ORIGINAL BID PRICE UNLESS A CREDIT IS DUE TO THE OWNER.
- ALL PLANT MATERIALS TO CONFORM TO THE AMERICAN STANDARD FOR NURSERY STOCK ANSI Z60.1.
- CONTAINER GROWN STOCK SHOULD HAVE GROWN IN A CONTAINER LONG ENOUGH FOR THE ROOT SYSTEM TO HAVE DEVELOPED SUFFICIENTLY TO HOLD ITS SOIL TOGETHER.
- ANY PLANT SUBSTITUTIONS, RELOCATION, OR REQUIRED CHANGE SHALL REQUIRE THE WRITTEN APPROVAL OF THE LANDSCAPE ARCHITECT OR OWNER.
- THE OWNER'S REPRESENTATIVE AND/OR LANDSCAPE ARCHITECT RESERVE THE RIGHT TO REFUSE ANY MATERIAL THEY DEEM UNACCEPTABLE.
- COORDINATE WITH PROJECT REPRESENTATIVE FOR DISTURBED SITE TREATMENTS OUTSIDE LANDSCAPE IMPROVEMENTS. SEE CIVIL PLANS FOR SOIL STABILIZATION FOR EROSION CONTROL.
- IF REQUIRED, CONTRACTOR TO ENSURE THAT AN AUTOMATED IRRIGATION SYSTEM THAT PROVIDES COMPLETE COVERAGE OF THE SITE IS INSTALLED PRIOR TO INSTALLING TREES/PALMS (SEE IRRIGATION PLAN SHEET IF PROVIDED). IF NO PLAN IS PROVIDED THE CONTRACTOR SHALL SUBMIT A PROPOSED DESIGN TO THE LANDSCAPE ARCHITECT/ENGINEER FOR APPROVAL PRIOR TO INSTALLATION. THE PROPOSED DESIGN MUST HAVE AN APPROVED BACKFLOW DEVICE AND RAIN SENSOR INSTALLED TO STOP IRRIGATION DURING RAIN EVENTS. CONTRACTOR SHALL ENSURE THAT THERE IS POSITIVE DRAINAGE AND NO PONDING OF WATER AT ROOT AREA.
- ALL SLOPES AND AREAS DISTURBED BY CONSTRUCTION SHALL BE GRADED SMOOTH AND FOUR INCHES OF TOPSOIL APPLIED. IF ADEQUATE TOPSOIL IS NOT AVAILABLE ON SITE, THE CONTRACTOR SHALL PROVIDE TOPSOIL, APPROVED BY THE OWNER, AS NEEDED. THE AREA SHALL THEN BE SEEDED/SODDED, FERTILIZED, MULCHED, WATERED AND MAINTAINED UNTIL HARDY GRASS GROWTH IS ESTABLISHED IN ALL AREAS. ANY RELOCATED TREES SHALL BE MAINTAINED UNTIL SUCH POINT AS TREE IS RE-ESTABLISHED. ANY AREAS DISTURBED FOR ANY REASON PRIOR TO FINAL ACCEPTANCE OF THE PROJECT SHALL BE CORRECTED BY THE CONTRACTOR AT NO ADDITIONAL COST TO THE OWNER.
- PRIOR TO CONSTRUCTION, THE CONTRACTOR SHALL BE RESPONSIBLE FOR LOCATING ALL UNDERGROUND UTILITIES AND SHALL AVOID DAMAGE TO ALL UTILITIES DURING THE COURSE OF THE WORK. LOCATIONS OF EXISTING BURIED UTILITY LINES SHOWN ON THE PLANS ARE BASED UPON BEST AVAILABLE INFORMATION AND ARE TO BE CONSIDERED APPROXIMATE. IT SHALL BE THE RESPONSIBILITY OF THE CONTRACTOR 1) TO VERIFY THE LOCATIONS OF UTILITY LINES AND ADJACENT TO THE WORK AREA 2) TO PROTECT OF ALL UTILITY LINES DURING THE CONSTRUCTION PERIOD 3) TO REPAIR ANY AND ALL DAMAGE TO UTILITIES, STRUCTURES, SITE APPURTENANCES, ETC. WHICH OCCURS AS A RESULT OF THE CONSTRUCTION AT NO COST TO THE OWNER.
- WEED MAT IS REQUIRED IN LANDSCAPED ISLANDS AS SPECIFIED.
- ALL PLANT MATERIAL QUANTITIES SHOWN ARE APPROXIMATE. CONTRACTOR SHALL BE RESPONSIBLE FOR COMPLETE COVERAGE OF ALL PLANTING BEDS AT SPACING SHOWN.
- IF A SWPPP PLAN IS PROVIDED THIS PLAN IS TO BE IMPLEMENTED COOPERATIVELY WITH SWPPP PLAN, AS NEEDED, TO MAXIMIZE THE EFFECTIVENESS OF THE SWPPP PLAN FOR THIS SITE.
- THE CONTRACTOR IS ENCOURAGED TO COMPLETE TEMPORARY OR PERMANENT SEEDING OR SODDING IN STAGES FOR SOIL STABILIZATION AS AREAS ARE COMPLETED AFTER GRADING.
- ALL DISTURBED AREAS AS DESIGNATED ON THE GRADING PLAN SHALL BE SOWN WITH GRASS SEED MIX OF 40% KENTUCKY BLUEGRASS, 40% TALL FESCUE, 20% PERENNIAL RYEGRASS BY WEIGHT @ 3 LBS / 1000 SF.
- SEEDING ON SLOPES: HYDROSEED WITH GRASS SEED AS INDICATED ON PLANS. SEE LEGEND FOR SPECIFIC GRASS SEED TYPE. SEEDING SHALL BE ACCOMPLISHED IMMEDIATELY AFTER BED PREPARATION. HYDROSEED MIXTURE SHALL CONTAIN CELLULOSE MULCH APPLIED AT A RATE OF 2,000 LBS/ACRE, WITH A MAXIMUM OF 50 LBS/100 GAL. OF WATER. IF SEEDING IS DELAYED AFTER MIXING 1/2 - 2 HOURS ADD AN ADDITIONAL 50% OF SEED MIX. IF DELAY IS LONGER THAN 2 HOURS, BEGIN WITH NEW MIXTURE. ALL SLOPES 2:1 OR GREATER SHALL BE COVERED WITH EROSION CONTROL BLANKET AS SHOWN IN THE EROSION CONTROL BLANKET DETAIL. SEE SPECIFICATIONS FOR SEED ESTABLISHMENT REQUIREMENTS.
- ALL PLANT MATERIAL IN TREE HOLDING AREAS SHALL BE MANUALLY WATERED/IRRIGATED TO KEEP MOIST UNTIL PLANTED.
- THE LANDSCAPE CONTRACTOR SHALL HAVE A SOILS ANALYSIS TEST CONDUCTED ON THE SITE PRIOR TO INSTALLATION OF ANY LANDSCAPE MATERIALS. THE CONTRACTOR SHALL BE RESPONSIBLE FOR COMPLETING THE SOIL SAMPLING AND SUBMITTING THE SAMPLES TO A SOILS TESTING LAB FOR RESULTS. THIS WILL INCLUDE A SEPARATE LAB TEST REPORT AND RECOMMENDATIONS (AMENDMENTS/FERTILIZER AMOUNTS AND APPLICATION RATES) FOR EACH TYPE OF PROPOSED LANDSCAPING (SHRUBS, SOD, TREES). THE SOILS LAB RESULTS AND RECOMMENDATIONS ARE REQUIRED TO BE REVIEWED AND APPROVED BY THE DESIGN LANDSCAPE ARCHITECT PRIOR TO INSTALLING ANY LANDSCAPING MATERIALS ONSITE.

PLANTING NOTES

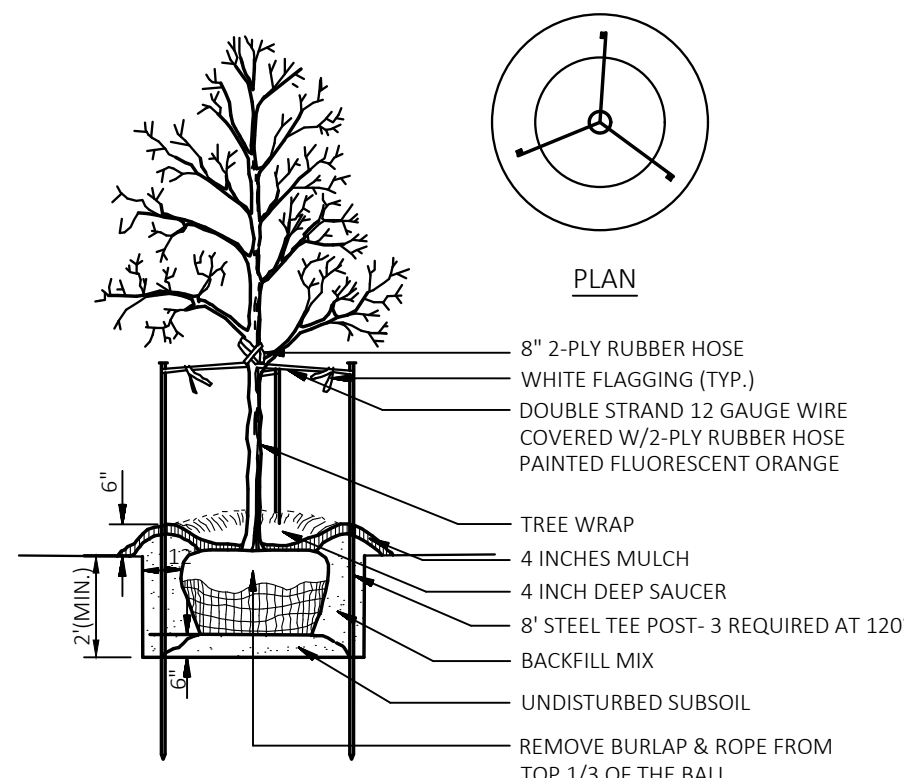
- LANDSCAPE CONTRACTOR SHALL BE RESPONSIBLE FOR PREPARING ALL PLANTED AREAS. ALL DELETERIOUS MATERIALS SUCH AS ROCK, TRASH, CONSTRUCTION DEBRIS, AGGREGATE BASE MATERIAL, ASPHALT, ETC. SHALL BE REMOVED PRIOR TO ANY FILL OPERATIONS. FILL ALL PLANTING AREAS WITH CLEAN EARTHEN FILL. SOIL SHALL BE FREE OF HEAVY, STIFF CLAY AND ANY DELETERIOUS MATERIAL OVER ONE INCH IN SIZE. THE TOP SIX INCHES OF FILL MATERIAL STRIPPED FROM SITE MAY BE UTILIZED FOR PLANTER OR TOPSOIL FILL IF PRIOR APPROVAL HAS BEEN OBTAINED FROM THE OWNER'S REPRESENTATIVE AND/OR LANDSCAPE ARCHITECT.
- FINISH GRADE OF LANDSCAPE AREAS (TOP OF TURF AND MULCH) MUST BE GRADED TO 1 1/2" BELOW ADJACENT PAVEMENT SURFACES.
- LOCATE SHRUBS A DISTANCE OF HALF OF THEIR AVERAGE MATURE SPREAD AWAY FROM WALKS, STRUCTURES, CONCRETE PADS, ETC. LOCATE GROUND COVER PLANTINGS A MINIMUM OF 2' FROM WALKS, STRUCTURES, CONCRETE PADS, ETC.
- ALL LAWN AREAS NOT OTHERWISE BORDERED BY WALKS, OR OTHER STRUCTURES, SHALL HAVE MANUFACTURED EDGING AS REQUIRED.
- TREES PLANTED ADJACENT TO PUBLIC ROADS AND PEDESTRIAN SIDEWALKS SHALL BE PRUNED SUFFICIENTLY TO AVOID VISUAL BLOCKS TO INTERSECTING VEHICULAR ACCESS OR INTERFERENCE WITH PEDESTRIAN WALKWAYS. TREES WITH A 4" OR LARGER CALIPER SHALL BE PRUNED UP TO 6'-0" ABOVE PAVEMENTS.
- ALL TREES WITHIN 4' OF PAVED SURFACES (SUCH AS CURBS, WALLS, BUILDINGS AND SIDEWALKS) SHALL BE PROVIDED WITH A DEEP ROOT BARRIER CONTROL DEVICE OR EQUAL. INSTALL PER MFR'S SPECIFICATIONS.
- TOPSOIL DEPTH SHALL BE AS FOLLOWS: PLANTER BEDS - 12" MINIMUM GRASS/SOD AREAS - 4" MINIMUM (AFTER COMPACTION)
- BACKFILL ALL TREES, SHRUBS, GROUND COVER WITH A MIXTURE OF 2 PARTS NATIVE SOIL AND 1 PART SOIL CONDITIONING WITH WOOD MULCH.
- THE LANDSCAPE CONTRACTOR SHALL WATER TEST ALL PLANTING HOLE PRIOR TO PLANTING. IF HOLES DO NOT DRAIN PROPERLY, EXCAVATE FURTHER UNTIL IMPERMEABLE LAYER IS BREACHED. EXCAVATED PLANT PITS SHALL HAVE POSITIVE DRAINAGE. PLANT PITS (WHEN FULLY FLOODED WITH WATER) SHALL DRAIN WITHIN 1 HOUR OF FILLING. ENSURE THAT ALL PLANT PITS HAVE POSITIVE DRAINAGE.
- ALL PLANTING BEDS SHALL BE TREATED WITH A PRE-EMERGENT HERBICIDE. PRE-EMERGENT HERBICIDE SHALL BE APPLIED PER MANUFACTURER'S RECOMMENDATIONS AND SHALL OCCUR AFTER TOPSOIL PLACEMENT AND PRIOR TO INSTALLATION OF PLANT MATERIALS AND MULCH.
- FERTILIZE ALL PLANTS AT THE TIME OF PLANTING WITH A TIME RELEASE FERTILIZER PER BRAND'S SPECIFIED APPLICATION RATES.
- ALL PLANTING BED SOILS SHALL BE AMENDED WITH 2" OF ORGANIC COMPOST
- ALL TREES AND SHRUBS SHALL BE PLANTED IN SUCH A MANNER AS TO ENSURE THEIR SURVIVAL.
- ANY ROPE OR WIRE BINDING THE BALL SHALL BE CUT PRIOR TO PREVENT GIRDLING OF THE TREE. REMOVE WIRE, TWINE, AND BURLAP FROM THE TOP HALF OF ALL B&B PLANT MATERIAL.
- IF A NON-BIODEGRADABLE MATERIAL IS USED AROUND THE BALL, IT SHALL BE COMPLETELY REMOVED PRIOR TO BACKFILLING.
- PRIOR TO INSTALLATION, THE ROOTS OF CONTAINER GROWN STOCK SHALL BE SEPARATED OR SPLIT TO ENSURE PROPER ROOT DEVELOPMENT.
- CONTRACTOR SHALL BE RESPONSIBLE FOR DELIVERY SCHEDULE AND PROTECTION BETWEEN DELIVERY AND PLANTING TO MAINTAIN HEALTHY PLANT CONDITIONS.
- ANY PLANT MATERIAL WHICH IS DISEASED, DISTRESSED, DEAD, OR REJECTED (PRIOR TO SUBSTANTIAL COMPLETION) SHALL BE PROMPTLY REMOVED FROM THE SITE AND REPLACED WITH MATERIAL OF THE SAME SPECIES, QUANTITY, AND SIZE AND MEETING ALL PLANT LIST SPECIFICATIONS. TREES & SHRUBS SHALL BE PLANTED AS SOON AS POSSIBLE AFTER DELIVERY.
- ALL TREES MUST BE STRAIGHT-TRUNKED, FULL-HEADED AND MEET ALL REQUIREMENTS SPECIFIED.
- ALL TREES MUST BE STAKED AS SHOWN IN THE DETAILS.
- NO SUBSTITUTIONS OR ALTERNATIVES WILL BE ALLOWED FOR GROUND SURFACE MATERIALS UNLESS APPROVED IN WRITING BY THE LANDSCAPE ARCHITECT OR OWNER.
- MAINTAIN 5' MIN. HORIZONTAL SEPARATION BETWEEN TREE PLANTINGS AND ALL UTILITIES UNLESS OTHERWISE SPECIFIED.
- A FOUR INCH (4") TOP DRESSING/MULCHING OF 2" - 3" WASHED GRANITE ROCK MULCH SHALL BE PLACED IN ALL PLANT BEDS AND AROUND ALL TREES. SINGLE TREES OR SHRUBS SHALL HAVE TOP DRESSING TO THE OUTSIDE EDGE OF THE MANUFACTURED EDGING OR LANDSCAPE ISLAND. (SEE PLANTING DETAIL) TOP DRESSINGS CAN BE WOOD MULCH, ROCK, OR ANY OTHER DECORATIVE MATERIAL SPECIFIED ON PLANS. SEE LANDSCAPE PLAN FOR TYPE.
- THE FOLLOWING PLANTING SEASONS ARE RECOMMENDED:
EVERGREEN SHRUBBERY OCT-APR
DECIDUOUS SHRUBBERY & TREES OCT-APR
EVERGREEN TREES OCT-APR

PLANT GUARANTEE, REPLACEMENT AND MAINTENANCE

- GUARANTEE:
ACCEPTANCE OF GRADING AND SEEDING SHALL BE BY LANDSCAPE ARCHITECT AND/OR OWNER. THE CONTRACTOR SHALL ASSUME MAINTENANCE RESPONSIBILITIES UNTIL FINAL ACCEPTANCE. MAINTENANCE SHALL INCLUDE WATERING, WEEDING, RESEEDING AND OTHER OPERATIONS NECESSARY TO KEEP ALL LAWN AREAS IN A THRIVING CONDITION. UPON FINAL ACCEPTANCE, OWNER SHALL ASSUME ALL MAINTENANCE RESPONSIBILITIES. AFTER LAWN AREAS HAVE GERMINATED, AREAS WHICH FAIL TO SHOW A UNIFORM STAND OF GRASS FOR ANY REASON WHATSOEVER SHALL BE RE-SEEDED REPEATEDLY UNTIL ALL AREAS ARE COVERED WITH A SATISFACTORY STAND OF GRASS. MINIMUM ACCEPTANCE OF SEEDED LAWN AREAS MAY INCLUDE SCATTERED BARE SPOTS, NONE OF WHICH ARE LARGER THAN 1 SQUARE FOOT, AND WHEN COMBINED DO NOT EXCEED 2% OF TOTAL SEEDED LAWN AREA.
- REPLACEMENT:
ANY PLANT UNDER THIS SPEC WHICH IS DEAD, MISSING, UNHEALTHY, OR OTHERWISE NOT ACCEPTABLE AND NOT IN SATISFACTORY GROWING CONDITION DURING CONSTRUCTION MAINTENANCE PERIOD, OR AT THE END OF THE GUARANTEE PERIOD, SHALL BE REMOVED FROM SITE AND REPLACED WITH SUITABLE, ACCEPTABLE PLANT AS SPECIFIED, WITHIN FIVE (5) DAYS.
- MAINTENANCE:
GENERAL CONTRACTOR SHALL PROVIDE ONE YEAR OF LANDSCAPE MAINTENANCE, FROM THE TIME THE PROJECT RECEIVES THE CERTIFICATE OF OCCUPANCY AND THERE AFTER, FOR ALL NEW LANDSCAPE. IF EXISTING LANDSCAPE EXISTS ON-SITE, GENERAL CONTRACTOR IS TO PROVIDE THE OPTION OF MAINTENANCE FOR THE OWNER'S REVIEW.

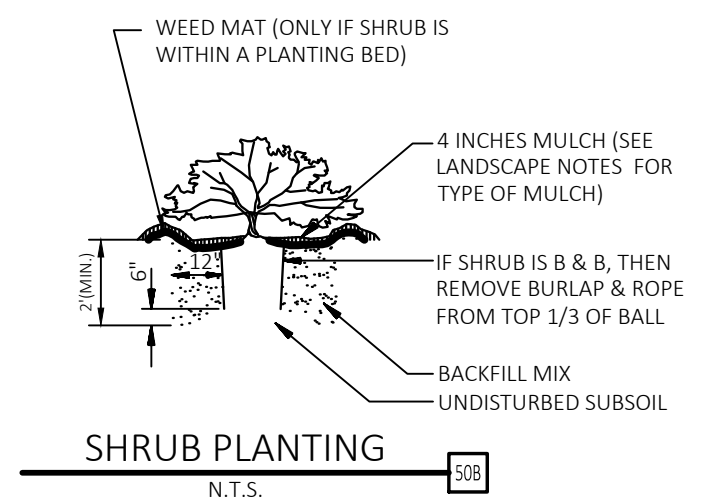
HERBICIDES NOTES

- APPLICATION OF HERBICIDES SHALL BE IN COMPLIANCE WITH STATE PESTICIDES REGULATIONS. IT IS THE RESPONSIBILITY OF THE LANDSCAPE CONTRACTOR TO CONSULT WITH THE REGULATORY AGENCIES FOR LOCAL HERBICIDES APPLICATION REQUIREMENTS.
- IF THERE IS A DISCREPANCY BETWEEN STATE REGULATIONS AND ADDITIONAL REQUIREMENTS BELOW, MOST STRINGENT SHALL RULE.
- NO AERIAL APPLICATION OF HERBICIDES IS PERMITTED ON SITE.
- CARCINOGENS AND EPA TOXIC CATEGORY I AND II ARE PROHIBITED TO USE ON SITE.

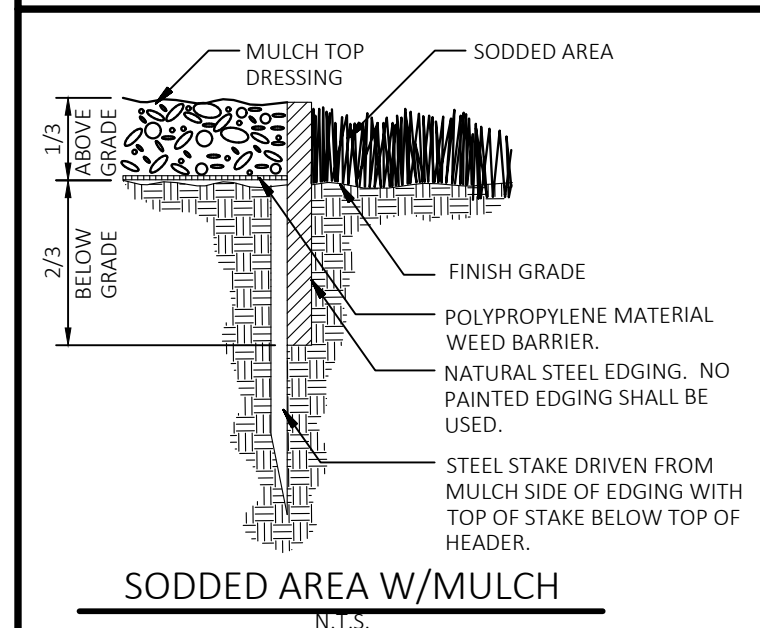


NOTE: SEE LANDSCAPE NOTES FOR THE TYPE OF MULCH MATERIAL TO USE.

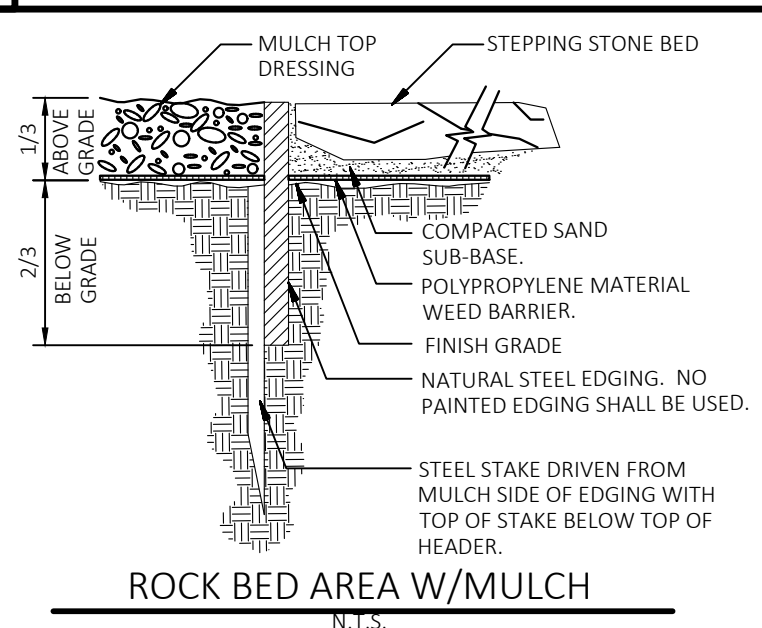
TREE PLANTING
N.T.S.



SHRUB PLANTING
N.T.S.



SODDED AREA W/MULCH
N.T.S.



ROCK BED AREA W/MULCH
N.T.S.

STEEL EDGING
N.T.S.

DRAWING LOCATION: P:\33000\33072\DRAWINGS\DESIGN\WORKING\33072-0.DWG. SAVED BY: MPARKS



CEI ENGINEERING ASSOCIATES, INC.
710 W. PINEDALE AVE.
FRESNO, CA 93711
PHONE: (559) 447-3119
FAX: (559) 447-3129



CLIENT
3K1 CONSULTING SERVICES, LLC.
11811 N. TATUM BOULEVARD,
PHOENIX, ARIZONA 85028
PHONE: (602) 850-8101



PLANS PREPARED FOR
QUICK N CLEAN
7291 E. ADOBE DRIVE, SUITE 115
SCOTTSDALE, AZ 85255
PHONE: (480) 707-3531

REVISION

NO.	DESCRIPTION	DATE

QUICK N CLEAN
PARKER RD. & PINE LANE AVE.
PARKER, COLORADO



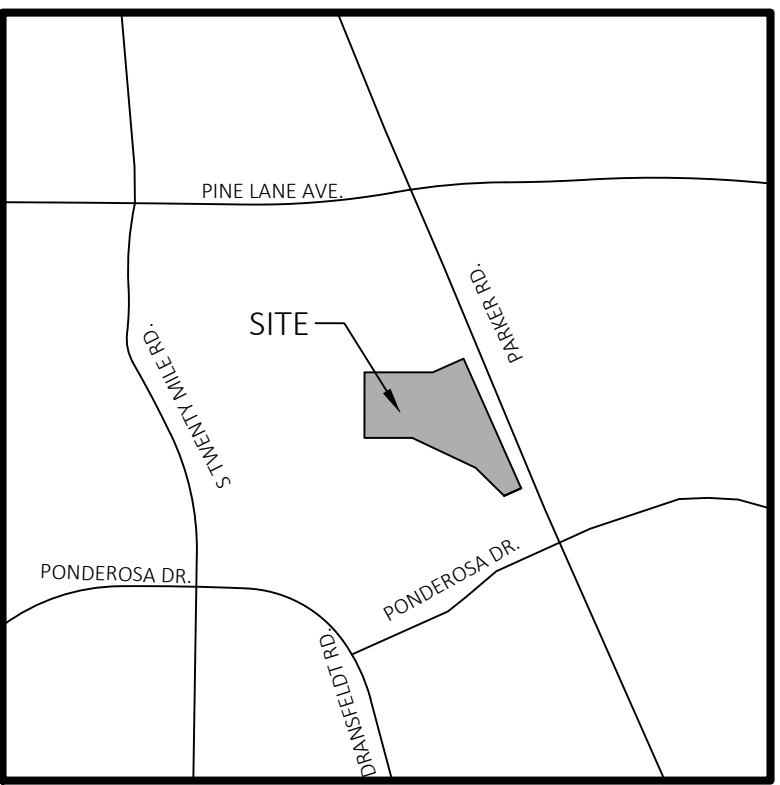
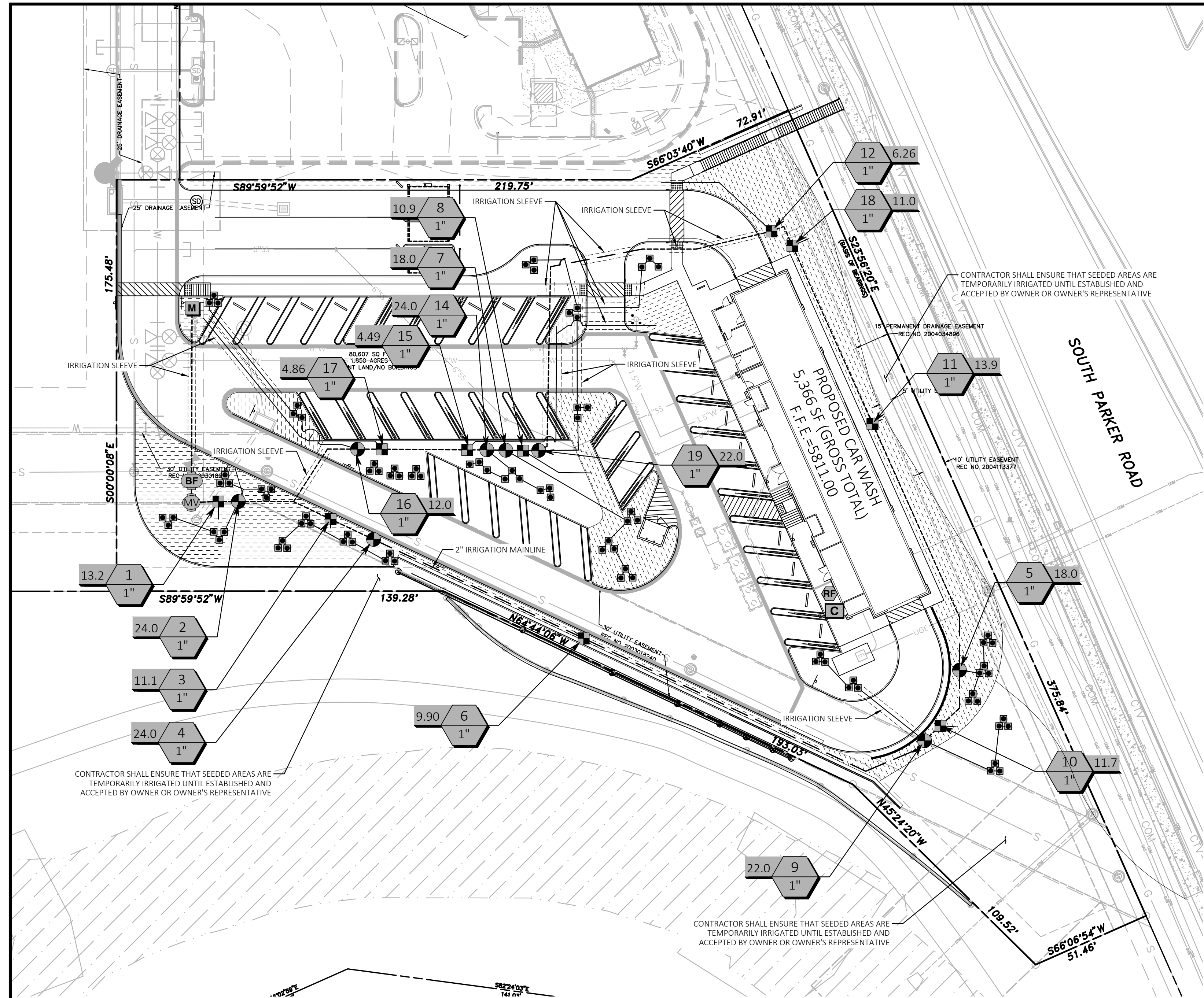
7/11/2022

PROFESSIONAL OF RECORD	TAB
PROJECT MANAGER	ASD
DESIGNER	RM
CEI PROJECT NUMBER	31672
DATE	7/8/2022
REVISION	REV-4

LANDSCAPE NOTES

SHEET TITLE
SHEET NUMBER

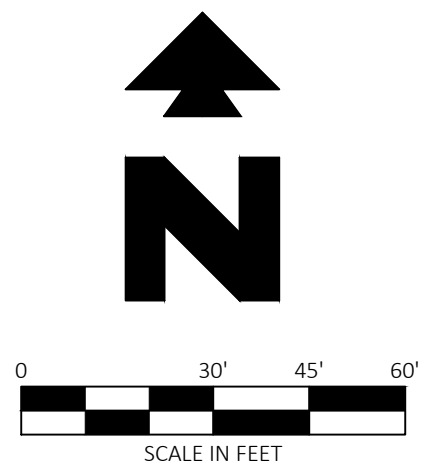
L2



Vicinity Map
Not to Scale



Know what's below.
Call before you dig.

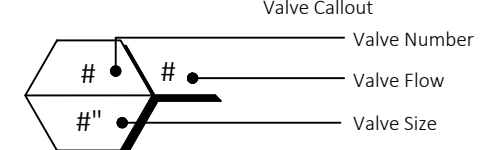


PROPOSED LEGEND

- BOUNDARY LINE/RIGHT OF WAY LINE
- STORM DRAIN

IRRIGATION SCHEDULE

SYMBOL	MANUFACTURER/MODEL/DESCRIPTION	QTY	PSI	DETAIL
1401 1402 1404 1408	RAIN BIRD RWS-B-C-SOCK 1401 ROOT WATERING SYSTEM WITH 4.0" DIAMETER X 36.0" LONG WITH LOCKING GRATE, SEMI-RIGID MESH TUBE. CHECK VALVE AND SAND SOCK. RAIN BIRD BUBBLER OPTION AS INDICATED: 1401 0.25 GPM, 1402 0.5 GPM, 1404 1.0 GPM, 1408 2.0 GPM.	90	30	
	RAIN BIRD XCZ-100-PRB-COM 1" WIDE FLOW DRIP CONTROL KIT FOR COMMERCIAL APPLICATIONS. 1" BALL VALVE WITH 1" PESB VALVE AND 1" PRESSURE REGULATING 40PSI QUICK-CHECK BASKET FILTER. 0.3GPM TO 20GPM.	10		
	AREA TO RECEIVE DRILLING RAIN BIRD XFS-CV-09-18 XFS-CV ON-SURFACE LANDSCAPE DRILLING WITH A HEAVY-DUTY 4.3 PSI CHECK VALVE. 0.9 GPH EMITTERS AT 18" O.C. DRILLING LATERALS SPACED AT 18" APART. WITH EMITTERS OFFSET FOR TRIANGULAR PATTERN. SPECIFY XF INSERT FITTINGS.	9,062 L.F.		
	RAIN BIRD PESB-PRS-D 1" 1", 1-1/2", 2" PLASTIC INDUSTRIAL VALVES. LOW FLOW OPERATING CAPABILITY, GLOBE CONFIGURATION. WITH PRESSURE REGULATING MODULE, AND SCRUBBER TECHNOLOGY FOR RELIABLE PERFORMANCE IN DIRTY WATER IRRIGATION APPLICATIONS.	8		
	SHUT OFF VALVE	1		
	RAIN BIRD PESB-PRS-D 1" 1", 1-1/2", 2" PLASTIC INDUSTRIAL VALVES. LOW FLOW OPERATING CAPABILITY, GLOBE CONFIGURATION. WITH PRESSURE REGULATING MODULE, AND SCRUBBER TECHNOLOGY FOR RELIABLE PERFORMANCE IN DIRTY WATER IRRIGATION APPLICATIONS.	1		
	ZURN 975XL 1" REDUCED PRESSURE BACKFLOW DEVICE	1		
	RAIN BIRD ESP/ALM/ME WITH (02) ESP/ALM/M12 32 STATION COMMERCIAL CONTROLLER. MOUNTED ON A PLASTIC WALL MOUNT.	1		
	RAIN BIRD WR2-RFS WIRELESS RAIN/FREEZE SENSOR.	1		
	WATER METER 1"	1		
	IRRIGATION LATERAL LINE: PVC CLASS 200 SDR 21	70.7 L.F.		
	IRRIGATION LATERAL LINE: PVC CLASS 200 SDR 21 1/2"	439.7 L.F.		
	IRRIGATION LATERAL LINE: PVC CLASS 200 SDR 21 3/4"	308.8 L.F.		
	IRRIGATION LATERAL LINE: PVC CLASS 200 SDR 21 1"	233.3 L.F.		
	IRRIGATION LATERAL LINE: PVC CLASS 200 SDR 21 1 1/4"	123.3 L.F.		
	IRRIGATION MAINLINE: PVC SCHEDULE 40 2"	965.3 L.F.		
	PIPE SLEEVE: PVC SCHEDULE 40	368.9 L.F.		



CRITICAL ANALYSIS

Generated: 2022-07-08 10:15

P.O.C. NUMBER: 01
Water Source Information:

FLOW AVAILABLE
Water Meter Size: 1"
Flow Available: 37.5 GPM

PRESSURE AVAILABLE
Static Pressure at POC: 65.00 PSI
Elevation Change: 0.00 ft
Service Line Size: 1 1/2"
Length of Service Line: 10 ft
Pressure Available: 64.00 psi

DESIGN ANALYSIS
Maximum Station Flow: 24 GPM
Flow Available at POC: 37.5 GPM
Residual Flow Available: 13.5 GPM

Critical Station:
Design Pressure: 11
Friction Loss: 30 PSI
Fittings Loss: 0.11 PSI
Elevation Loss: 0.01 PSI
Loss through Valve: 0 PSI
Pressure Req. at Critical Station: 11.75 PSI
Loss for Fittings: 41.87 PSI
Loss for Main Line: 0.04 PSI
Loss for POC to Valve Elevation: 0.42 PSI
Loss for Backflow: 0 PSI
Loss for Master Valve: 11.8 PSI
Loss for Water Meter: 2.23 PSI
Critical Station Pressure at POC: 1.09 PSI
Pressure Available: 57.45 PSI
Residual Pressure Available: 6.55 PSI

GENERAL IRRIGATION NOTES

- THE CONTRACTOR IS RESPONSIBLE FOR OBTAINING A COPY OF THE PROJECT SPECIFICATIONS PRIOR TO BIDDING. THE PROJECT SPECIFICATIONS ARE A PART OF THESE PLANS AND SHALL BE CONSULTED BY THE IRRIGATION CONTRACTOR. THE CONTRACTOR IS RESPONSIBLE FOR IMPLEMENTING WORK AS SPECIFIED IN THE PROJECT SPECIFICATIONS AND ON THE PLANS.
- CONTRACTOR SHALL VERIFY ALL DIMENSIONS, ELEVATIONS, EQUIPMENT QUANTITIES, AND UTILITY LOCATIONS PRIOR TO BEGINNING WORK.
- CONTRACTOR SHALL NOTIFY LANDSCAPE ARCHITECT OR LICENSED IRRIGATOR OF ANY DISCREPANCIES IN PLANS OR SPECIFICATIONS PRIOR TO BEGINNING OR CONTINUING WORK.
- THE CONTRACTOR SHALL MAKE NO SUBSTITUTIONS, DELETIONS, OR ADDITIONS TO THIS PLAN WITHOUT APPROVAL OF THE LANDSCAPE ARCHITECT OR LICENSED IRRIGATOR.
- ALL CONSTRUCTION SHALL CONFORM TO CITY, COUNTY, STATE, AND FEDERAL REQUIREMENTS. IT SHALL BE THE RESPONSIBILITY OF THE IRRIGATION CONTRACTOR TO ENSURE THAT ALL IRRIGATION EQUIPMENT MEETS GOVERNMENT REGULATIONS. CONTRACTOR SHALL ALSO BE RESPONSIBLE FOR OBTAINING ANY NECESSARY PERMITS OR APPROVALS.
- CONTRACTOR IS TO VERIFY ACTUAL AVAILABLE WATER PRESSURE BEFORE BEGINNING INSTALLATION. CONTRACTOR SHALL NOTIFY LANDSCAPE ARCHITECT OR LICENSED IRRIGATOR IF AVAILABLE WATER PRESSURE EXCEEDS 5 PSI HIGHER OR LOWER THAN THE DESIGN WATER PRESSURE OF 65 PSI.
- IRRIGATION SYSTEMS CONNECTED TO POTABLE WATER SUPPLY, SHALL HAVE A BACKFLOW PREVENTER INSTALLED PER LOCAL REQUIREMENTS.
- ANY EXISTING TREES TO REMAIN ARE TO BE PROTECTED FROM DAMAGE. DO NOT TRENCH OR EXCAVATE WITHIN THE CRITICAL ROOT ZONE OF ANY TREE.
- SUPPLY LINE AND METER TO BE PROVIDED BY GENERAL CONTRACTOR. BACKFLOW PREVENTER TO BE PROVIDED BY IRRIGATION CONTRACTOR. IRRIGATION CONTRACTOR'S POINT OF CONNECTION TO BEGIN AFTER THE IRRIGATION WATER METER.
- IRRIGATION CONTRACTOR SHALL REVIEW WINTERIZATION PROCEDURES FOR IRRIGATION SYSTEM WITH OWNERS REPRESENTATIVE.
- IRRIGATION CONTRACTOR IS RESPONSIBLE FOR INSTALLING MANUAL DRAIN VALVES AT LOWEST POSSIBLE ELEVATION ON IRRIGATION MAIN SO AS TO PROVIDE POSITIVE DRAINAGE OF IRRIGATION MAIN DURING WINTER MONTHS, OR PROVIDE BLOWOUT ASSEMBLY.
- ALL LATERAL LINES SHALL BE EQUIPPED WITH AUTOMATIC DRAIN VALVES AT LOW POINTS.
- IRRIGATION CONTRACTOR SHALL COORDINATE CONTROLLER LOCATION WITH GENERAL CONTRACTOR. GENERAL CONTRACTOR SHALL PROVIDE (2) 1" ELECTRICAL CONDUITS FOR IRRIGATION CONTRACTOR'S POWER/DATA CONNECTION TO CONTROLLER. SEE ARCHITECTURAL ELECTRICAL PLAN FOR ELECTRICAL CONNECTION TO THE IRRIGATION CONTROLLER. IRRIGATION CONTRACTOR SHALL COORDINATE CONSTRUCTION OF IRRIGATION SYSTEM WITH GENERAL CONTRACTOR AND LANDSCAPE CONTRACTOR PRIOR TO COMMENCEMENT OF CONSTRUCTION.
- THE CONTRACTOR IS SPECIFICALLY CAUTIONED THAT THE LOCATION AND/OR ELEVATION OF EXISTING UTILITIES AS SHOWN ON THESE PLANS IS BASED ON RECORDS OF THE VARIOUS UTILITY COMPANIES, AND WHERE POSSIBLE, MEASUREMENTS TAKEN IN THE FIELD. THE INFORMATION IS NOT TO BE RELIED ON AS BEING EXACT OR COMPLETE. THE CONTRACTOR MUST CALL THE APPROPRIATE UTILITY COMPANIES AT LEAST 72 HOURS BEFORE ANY EXCAVATION TO REQUEST EXACT FIELD LOCATION OF UTILITIES. IT SHALL BE THE RESPONSIBILITY OF THE CONTRACTOR TO RELOCATE ALL EXISTING UTILITIES WHICH CONFLICT WITH THE PROPOSED IMPROVEMENTS SHOWN ON THE PLANS.
- ALL BELOW GRADE LOW VOLTAGE WIRING CONNECTIONS SHALL BE INSTALLED PER WIRE CONNECTION DETAIL.
- DO NOT INSTALL IRRIGATION AT PYLON / MONUMENT SIGN LOCATION UNTIL SIGN HAS BEEN INSTALLED.
- LOCATION FOR IRRIGATION SYSTEM AS SHOWN IS FOR DRAWING PURPOSES ONLY. UNSLEEVED PIPES MAY BE SHOWN IN PAVEMENT AREAS FOR CLARITY ONLY. INSTALL THESE PIPES IN ADJACENT LANDSCAPE AREAS WHERE NECESSARY. CONTRACTOR SHALL VERIFY THE EXACT LOCATION IN FIELD PRIOR TO THE COMMENCEMENT OF CONSTRUCTION OF PROPOSED IRRIGATION SYSTEM. ALL PROPOSED IRRIGATION LINES AND EQUIPMENT SHALL BE INSTALLED WITHIN THE BOUNDARIES OF THE PROJECT SITE. CONTRACTOR SHALL NOTIFY LANDSCAPE ARCHITECT OR LICENSED IRRIGATOR IF THE DESIGN AS SHOWN IS NOT ACHIEVABLE.
- MINIMUM COVER FROM TOP OF PIPING TO FINISHED GRADE SHALL BE AS PER DETAIL 64A.
- IRRIGATION CONTRACTOR SHALL COORDINATE IRRIGATION INSTALLATION WITH PLANTING PLAN AND SITE CONDITIONS TO PROVIDE COMPLETE COVERAGE WITH MINIMUM OVERSPRAY. THE IRRIGATION CONTRACTOR SHALL MAKE MINOR ADJUSTMENTS TO ENSURE PROPER COVERAGE AT NO ADDITIONAL COST TO THE OWNER.
- VALVE BOXES SHALL BE INSTALLED FLUSH WITH GRADE, SUPPORTED BY BRICKS IF NEEDED, WITH 3" OF CLEAN PEA GRAVEL LOCATED BELOW THE VALVE.
- ALL MAIN LINE PIPING, NON-PRESSURE PIPING AND CONTROL WIRE SLEEVING SHALL BE INSTALLED IN SEPARATE SLEEVES. ALL LATERAL LINE PIPING UNDER PAVING SHALL BE PVC SCHEDULE 40 AND SHALL BE INSTALLED PRIOR TO ANY HARDSCAPE MATERIAL. IRRIGATION CONTRACTOR TO PROVIDE SLEEVES BETWEEN 12" AND 15" BELOW GRADE AT ALL DRIVE ENTRANCES AND SIDEWALKS. MAINLINE SLEEVE SIZE SHALL BE A MINIMUM OF TWICE (2X) THE DIAMETER OF THE PIPE TO BE SLEEVED. CONTROL WIRE SLEEVES SHALL BE OF SUFFICIENT SIZE FOR THE REQUIRED NUMBER OF WIRES.
- IT IS THE RESPONSIBILITY OF THE IRRIGATION CONTRACTOR TO FAMILIARIZE HIMSELF WITH ALL GRADE DIFFERENCES, LOCATION OF FENCES, RETAINING WALLS, AND UTILITIES. THE IRRIGATION CONTRACTOR SHALL REPAIR OR REPLACE ALL ITEMS DAMAGED BY HIS WORK. HE SHALL COORDINATE HIS WORK WITH OTHER CONTRACTORS FOR THE LOCATION AND INSTALLATION OF PIPE SLEEVES AND LATERALS THROUGH WALLS, UNDER ROADWAYS AND PAVING AND TIMING, ETC. REFER TO CIVIL ENGINEERING PLANS FOR GRADING, METHODS OF DRAINAGE, IRRIGATION METERS, AND BACKFLOW PREVENTION DEVICE LOCATION.
- ALL IRRIGATION EQUIPMENT NOT OTHERWISE DETAILED OR SPECIFIED, SHALL BE INSTALLED AS PER MANUFACTURER'S RECOMMENDATIONS, DETAILS AND SPECIFICATIONS. ACCEPTABLE MANUFACTURERS INCLUDE RAINBIRD, HUNTER, TORQ, OR NETAFIM
- ANY DRIP SYSTEM PIPING IN PLANTING BEDS IS DIAGRAMMATIC. CONTRACTOR CAN ROUTE PIPING IN A FREEFORM MANNER (AVOIDING OBJECTS SUCH AS LIGHT POLES, TRANSFORMER PADS, EQUIPMENT VAULTS, SUBSURFACE ROCK TOO LARGE TO REMOVE, ETC...) AS LONG AS ALL PLANT MATERIAL RECEIVES THE PROPER NUMBER OF EMITTERS PER SCHEDULE AND THE VINYL DISTRIBUTION TUBING DOES NOT EXCEED THE MAXIMUM DESIGN LENGTHS PER MANUFACTURER'S RECOMMENDATIONS.
- UNLESS OTHERWISE REQUIRED, BACKFLOW PREVENTION DEVICES LESS THAN 2" SHALL BE PLACED IN A WIRE MESH BASKET ENCLOSURE AND PAINTED TO MATCH THE PRIMARY BUILDING COLORS. SEE CIVIL PLANS FOR LOCATION.
- ALL JOINTS AND BENDS 2" OR LARGER SHALL HAVE CONCRETE THRUST BLOCKING. THRUST BLOCKING SHALL BE A MINIMUM OF 1 CUBIC FOOT OF CONCRETE. PIPE SHALL NOT BE ENCASED IN CONCRETE. SEE DETAIL 31C FOR THRUST BLOCKING.
- CONTRACTOR WILL PROVIDE OWNER WITH A COMPLETE AND REPRODUCIBLE DRAWING OR IRRIGATION SYSTEM LAYOUT AS IT WAS INSTALLED. DRAWING SHOULD INCLUDE, BUT NOT BE LIMITED TO, LOCATION OF ZONES VALVES, MAIN, LATERAL AND DISTRIBUTION LINES, SLEEVES, WATER METER, BACKFLOW PREVENTION DEVICES, SENSORS AND CONTROLLER.
- ALL LATERAL LINE SIZING SHALL REFER TO PIPE SCHEDULE ON THIS PLAN.



CEI ENGINEERING ASSOCIATES, INC.
710 W. PINEDALE AVE.
FRESNO, CA 93711
PHONE: (559) 447-3119
FAX: (559) 447-3129



CLIENT
3K1 CONSULTING SERVICES, LLC.
11811 N. TATUM BOULEVARD,
SCOTTSDALE, AZ 85255
PHONE: (602) 850-8101

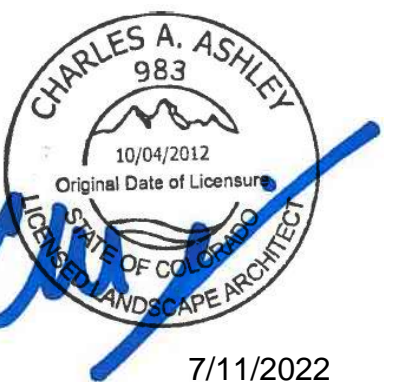


PLANS PREPARED FOR
QUICK N CLEAN
7291 E. ADOBE DRIVE, SUITE 115
SCOTTSDALE, AZ 85255
PHONE: (480) 707-3531

REVISION

NO.	DESCRIPTION	DATE

QUICK N CLEAN
PARKER RD. & PINE LANE AVE.
PARKER, COLORADO



7/11/2022

PROFESSIONAL OF RECORD	TAB
PROJECT MANAGER	ASD
DESIGNER	RM
CEI PROJECT NUMBER	31672
DATE	7/8/2022
REVISION	REV-4

IRRIGATION PLAN

SHEET TITLE
SHEET NUMBER

L3