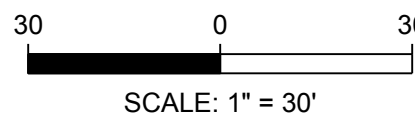
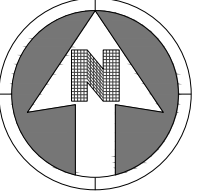


**KEY MAP**

NOT TO SCALE



SCALE: 1" = 30'

**NOTES:**

- 1. SEE LANDSCAPE PLAN SHEET FOR DETAILED LANDSCAPING INFORMATION.

**LEGEND:**

- TRAFFIC FLOW ARROW
- CENTER LINE OF DRIVE

LANDSCAPE PROPERTIES	AREA (SF)	PERCENT LANDSCAPED
TOTAL SITE DISTURBANCE	280,221	
TOTAL LANDSCAPE AREA	56,682	20.2%
TOTAL HARDSCAPED AREA	165,465	
BUILDING AREA	23,288	

**PARKING COUNT AND REQUIREMENTS**

STANDARD	PROPOSED	REQUIRED	CALCULATION
	423	295	88,291 / 300 = 294.3
HANDICAP	9	9	
BIKE	22	10	(88,291 / 10,000) * 2 = 18
TOTAL	454	387	(NOT TO EXCEED 10)

PARKER PROJECT NUMBER

**SP18-081**

DATE

**12/11/2020**

REVISION	DESCRIPTION	DATE
0	INITIAL SUBMITTAL TO TOWN	8/8/18
1	REVISED SUBMITTAL TO TOWN	11/26/18
2	THIRD SUBMITTAL TO TOWN	07/31/19
3	FOURTH SUBMITTAL TO TOWN	09/13/19
4	FIFTH SUBMITTAL TO TOWN	10/30/19
5	SIXTH SUBMITTAL TO TOWN	06/15/20
6	SEVENTH SUBMITTAL TO TOWN	9/9/2020
7	EIGHTH SUBMITTAL TO TOWN	10/7/2020
8	NINTH SUBMITTAL TO TOWN	12/11/2020



**S.A. MIRO, INC.**  
 CONSULTING ENGINEERS  
 4582 South Ulster Street Pkwy.  
 Suite 750 Denver, CO 80237  
 ph. 303 741 3737  
 fax 303 694 3134

PROJECT

**Parker Adventist  
 Hospital MOB III**

9403 CROWN CREST BLVD.  
 PARKER, COLORADO  
 80138

**SITE PLAN  
 AMENDMENT**

SHEET TITLE

**SITE PLAN**

SHEET NUMBER

**2 OF 12**

REVISION	DESCRIPTION	DATE
0	INITIAL SUBMITTAL TO TOWN	8/8/18
1	REVISED SUBMITTAL TO TOWN	11/28/18
2	THIRD SUBMITTAL TO TOWN	07/31/19
3	FOURTH SUBMITTAL TO TOWN	09/13/19
4	FIFTH SUBMITTAL TO TOWN	10/30/19
5	SIXTH SUBMITTAL TO TOWN	06/15/20
6	SEVENTH SUBMITTAL TO TOWN	9/9/2020
7	EIGHTH SUBMITTAL TO TOWN	10/7/2020
8	NINTH SUBMITTAL TO TOWN	12/11/2020



19 SOUTH TEJON ST., SUITE 300  
 COLORADO SPRINGS, CO. 80903  
 TELE: 719-471-7566  
 FAX: 719-471-1174  
 www.rtaarchitects.com

PROJECT

**Parker Adventist  
 Hospital MOB III**

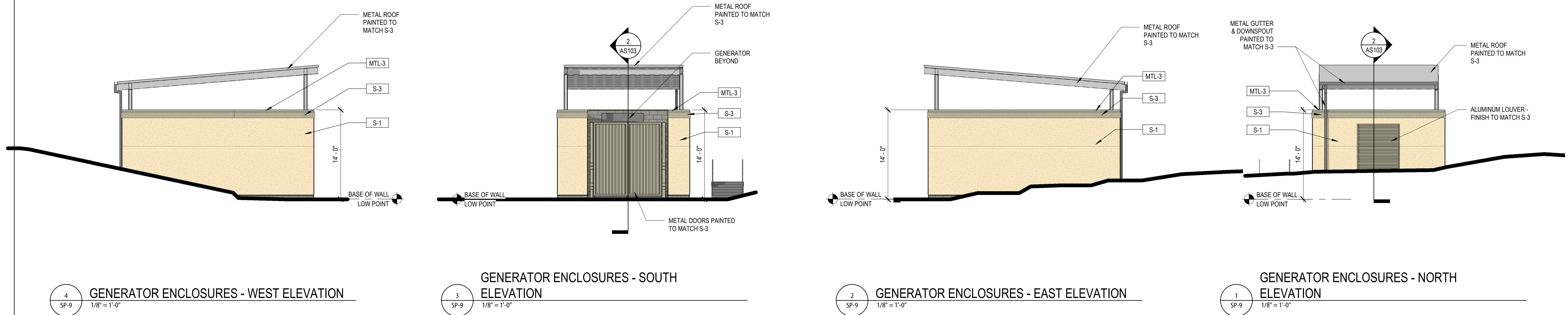
9403 CROWN CREST BLVD.  
 PARKER, COLORADO  
 80138

**SITE PLAN  
 AMENDMENT**

SHEET TITLE

**SITE ENCLOSURE  
 AND RETAINING  
 WALL ELEVATIONS**

SHEET NUMBER

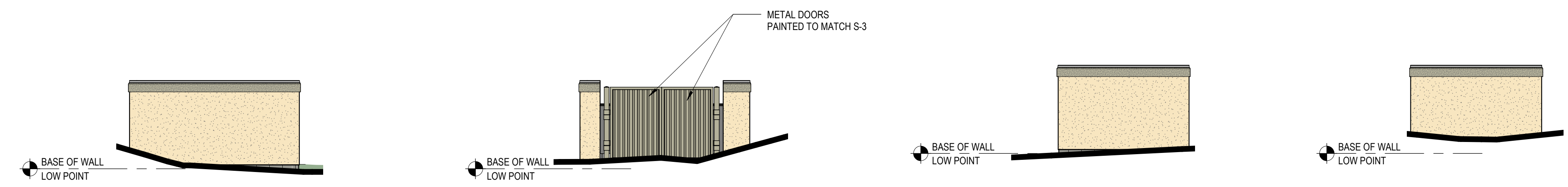


**4 GENERATOR ENCLOSURES - WEST ELEVATION**  
 SP-9 1/8" = 1'-0"

**3 GENERATOR ENCLOSURES - SOUTH ELEVATION**  
 SP-9 1/8" = 1'-0"

**2 GENERATOR ENCLOSURES - EAST ELEVATION**  
 SP-9 1/8" = 1'-0"

**1 GENERATOR ENCLOSURES - NORTH ELEVATION**  
 SP-9 1/8" = 1'-0"



**8 TRASH ENCLOSURE WEST ELEVATION**  
 SP-9 1/8" = 1'-0"

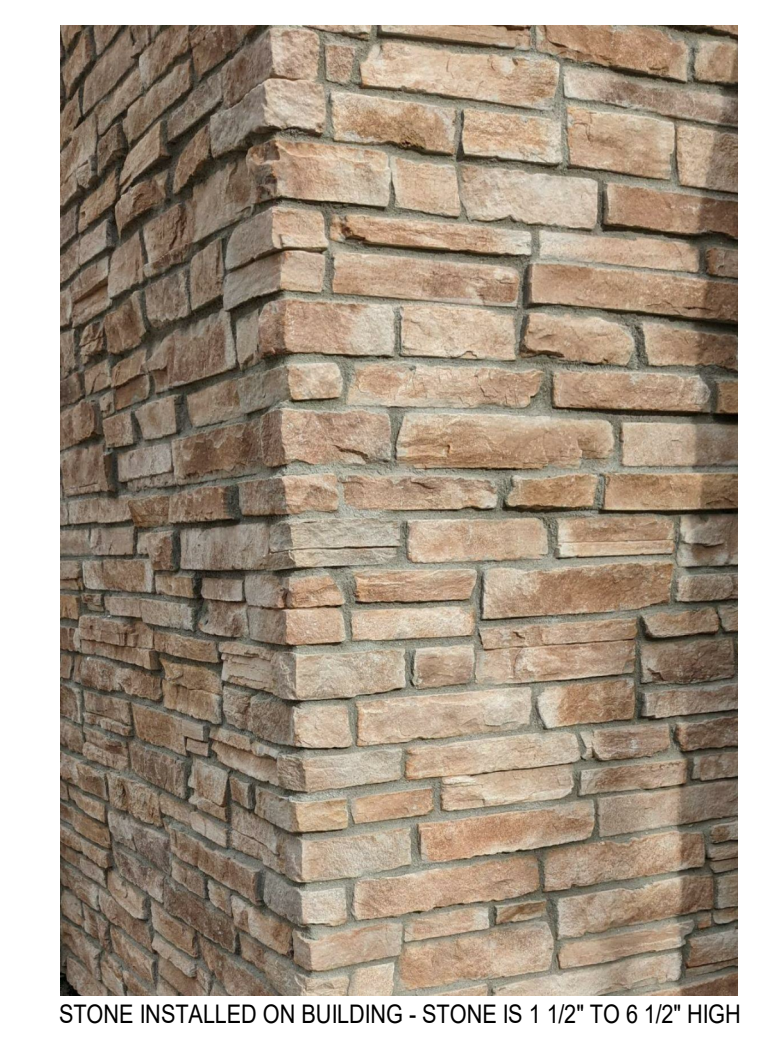
**7 TRASH ENCLOSURE EAST ELEVATION**  
 SP-9 1/8" = 1'-0"

**6 TRASH ENCLOSURE SOUTH ELEVATION**  
 SP-9 1/8" = 1'-0"

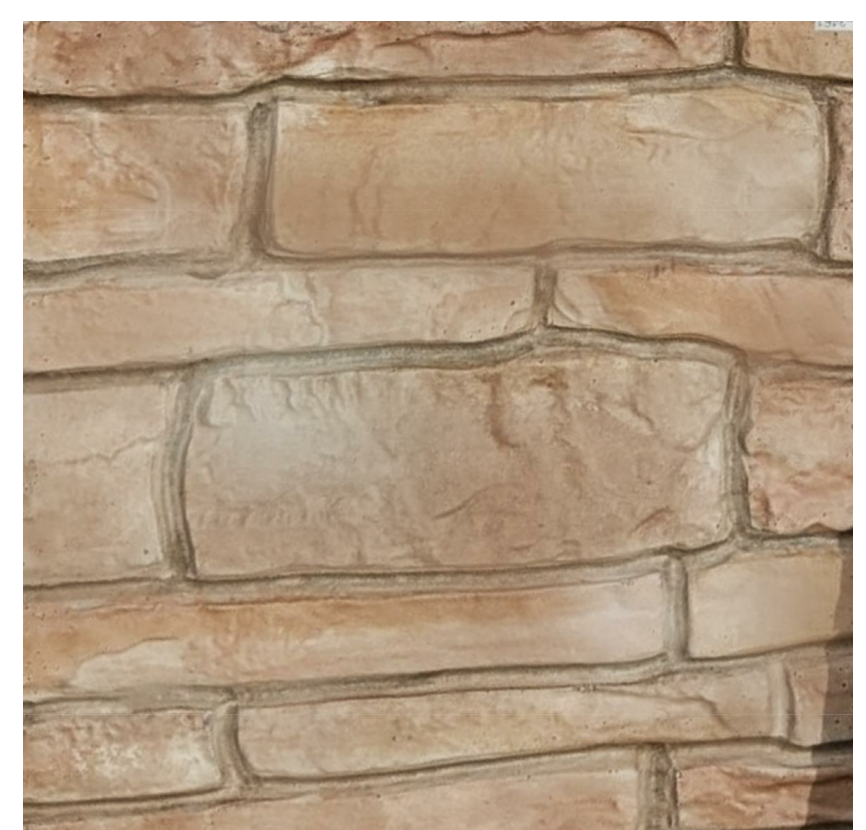
**5 TRASH ENCLOSURE NORTH ELEVATION**  
 SP-9 1/8" = 1'-0"

**EXTERIOR ELEVATION LEGEND**

	S-1	STUCCO LARIAT PAREX		GL-1	INSULATED VISION GLASS SOLARBAN 80 OPTIBLUE PPG
	S-2	STUCCO SNOWBALL PAREX		GL-1S	INSULATED SPANDELL GLASS AG 43 GRAY (INBOARD) GUARDIAN SUNGUARD
	S-3	STUCCO BASALT PAREX		AL-1	ALUMINUM STOREFRONT CLEAR ANODIZED KAWNEER
	STN-1	STONE CHERRY CREEK LEDGE SUNSET STONE			
	MTL-1	METAL PANEL HS-8 PANEL - CITYSCAPE BERRIDGE			
	MTL-1A	METAL PANEL HS-8 PANEL - ZINC GREY BERRIDGE			
	MTL-2	METAL PANEL FW-12 PANEL - CITYSCAPE BERRIDGE			
	MTL-2A	METAL PANEL FW-12 PANEL - CITYSCAPE BERRIDGE			
	MTL-3	METAL COPING ZINC GREY BERRIDGE			

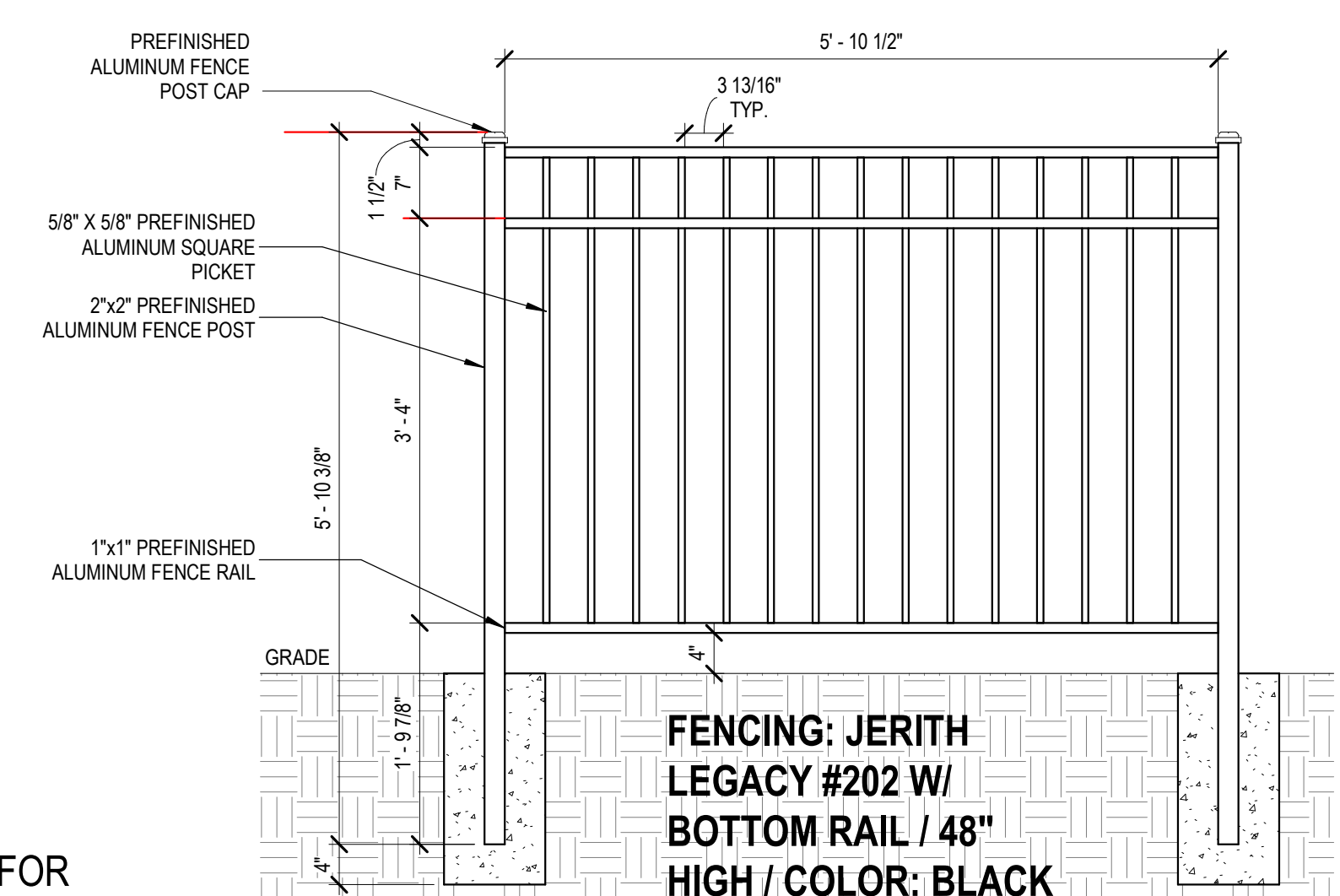


STONE INSTALLED ON BUILDING - STONE IS 1 1/2" TO 6 1/2" HIGH

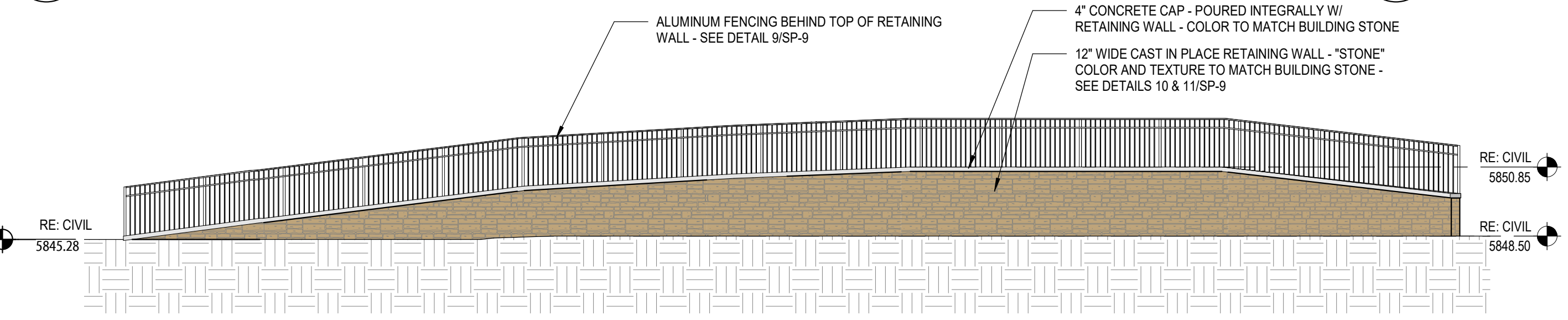


\*STONE\* COLOR AND TEXTURE TO MATCH BUILDING STONE - \*STONE\* IS 1 1/2" TO 6 1/2" HIGH

**PROPOSED CONCRETE STAMP "STONE" FOR RETAINING WALL**  
 SP-9 3/4" = 1'-0"



**9 ALUMINUM FENCE ELEVATION**  
 SP-9 3/4" = 1'-0"



**12 RETAINING WALL/FENCE ELEVATION**  
 SP-9 1/8" = 1'-0"

BIM 3001/Parker MOB III/Parker MOB III\_Redesign C-S\_ARCH\_V19.rvt  
 12/10/2020 9:58:49 AM