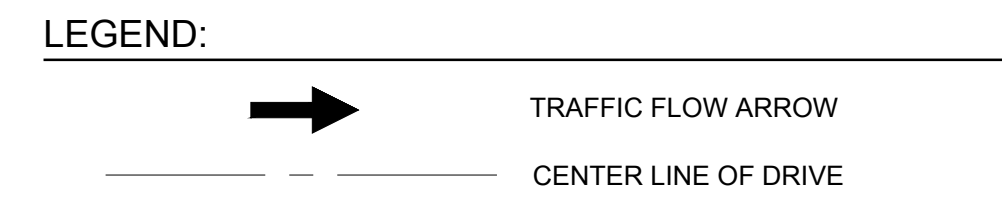


NOTES:
1. SEE LANDSCAPE PLAN SHEET FOR DETAILED LANDSCAPING INFORMATION.



LANDSCAPE PROPERTIES	AREA (SF)	PERCENT LANDSCAPED
TOTAL SITE DISTURBANCE	280,221	
TOTAL LANDSCAPE AREA	56,682	20.2%
TOTAL HARDSCAPED AREA	165,465	
BUILDING AREA	23,288	

PARKING COUNT AND REQUIREMENTS

STANDARD	PROPOSED	REQUIRED	CALCULATION
STANDARD	423	295	88,291 / 300 = 294.3
HANDICAP	9	9	
BIKE	22	10	(88,291 / 10,000) * 2 = 18
TOTAL	454	387	(NOT TO EXCEED 10)

PARKER PROJECT NUMBER
SP18-081

DATE
01/14/2021

REVISION	DESCRIPTION	DATE
0	INITIAL SUBMITTAL TO TOWN	8/8/18
1	REVISED SUBMITTAL TO TOWN	11/26/18
2	THIRD SUBMITTAL TO TOWN	7/31/19
3	FOURTH SUBMITTAL TO TOWN	9/13/19
4	FIFTH SUBMITTAL TO TOWN	10/30/19
5	SIXTH SUBMITTAL TO TOWN	6/15/20
6	SEVENTH SUBMITTAL TO TOWN	9/9/20
7	EIGHTH SUBMITTAL TO TOWN	10/7/20
8	NINTH SUBMITTAL TO TOWN	12/11/20



PROJECT
Parker Adventist Hospital MOB III

9403 CROWN CREST BLVD.
PARKER, COLORADO
80138

SITE PLAN AMENDMENT

SHEET TITLE
SITE PLAN

REVISION	DESCRIPTION	DATE
0	INITIAL SUBMITTAL TO TOWN	8/8/18
1	REVISED SUBMITTAL TO TOWN	11/28/18
2	THIRD SUBMITTAL TO TOWN	07/31/19
3	FOURTH SUBMITTAL TO TOWN	09/13/19
4	FIFTH SUBMITTAL TO TOWN	10/30/19
5	SIXTH SUBMITTAL TO TOWN	06/15/20
6	SEVENTH SUBMITTAL TO TOWN	9/9/2020
7	EIGHTH SUBMITTAL TO TOWN	10/7/2020
8	NINTH SUBMITTAL TO TOWN	12/11/2020



19 SOUTH TEJON ST., SUITE 300
 COLORADO SPRINGS, CO. 80903
 TELE: 719-471-7566
 FAX: 719-471-1174
 www.rtaarchitects.com

PROJECT

**Parker Adventist
 Hospital MOB III**

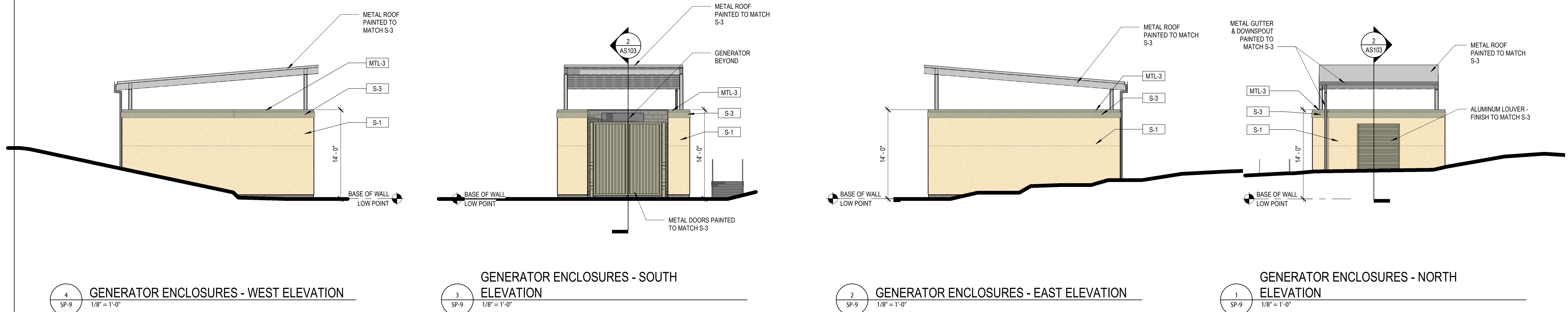
9403 CROWN CREST BLVD.
 PARKER, COLORADO
 80138

**SITE PLAN
 AMENDMENT**

SHEET TITLE

**SITE ENCLOSURE
 AND RETAINING
 WALL ELEVATIONS**

SHEET NUMBER

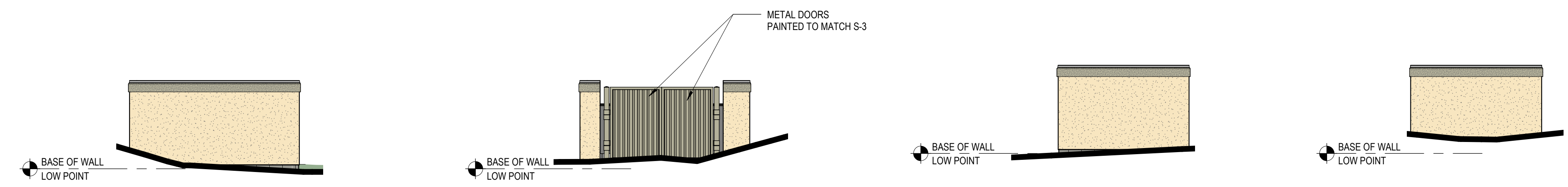


4 GENERATOR ENCLOSURES - WEST ELEVATION
 SP-9 1/8" = 1'-0"

3 GENERATOR ENCLOSURES - SOUTH ELEVATION
 SP-9 1/8" = 1'-0"

2 GENERATOR ENCLOSURES - EAST ELEVATION
 SP-9 1/8" = 1'-0"

1 GENERATOR ENCLOSURES - NORTH ELEVATION
 SP-9 1/8" = 1'-0"



8 TRASH ENCLOSURE WEST ELEVATION
 SP-9 1/8" = 1'-0"

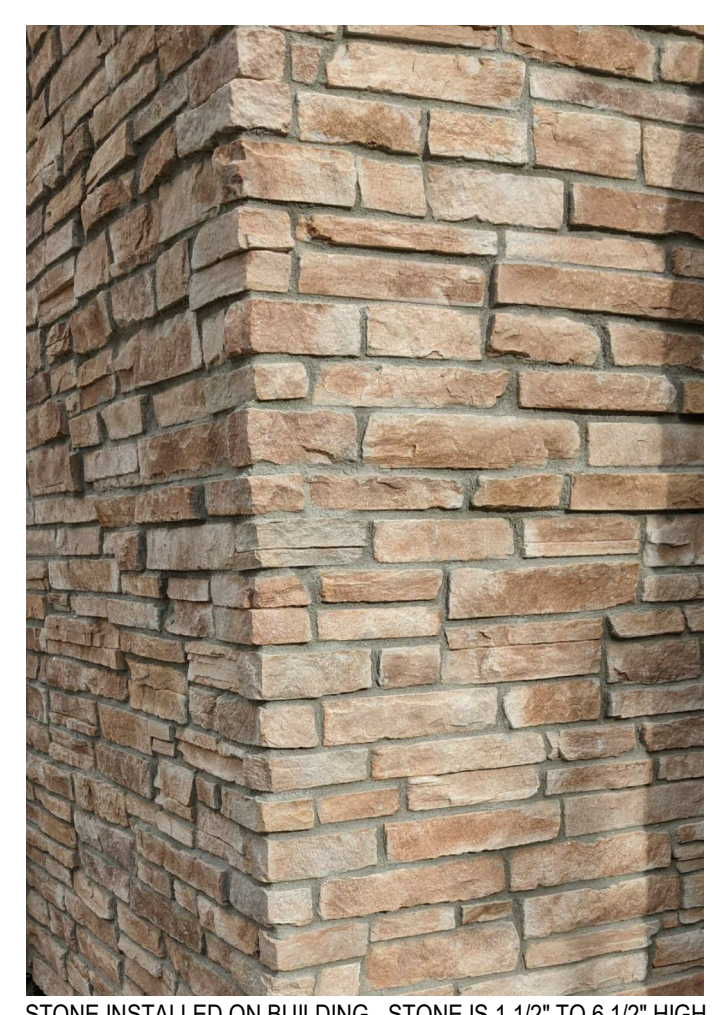
7 TRASH ENCLOSURE EAST ELEVATION
 SP-9 1/8" = 1'-0"

6 TRASH ENCLOSURE SOUTH ELEVATION
 SP-9 1/8" = 1'-0"

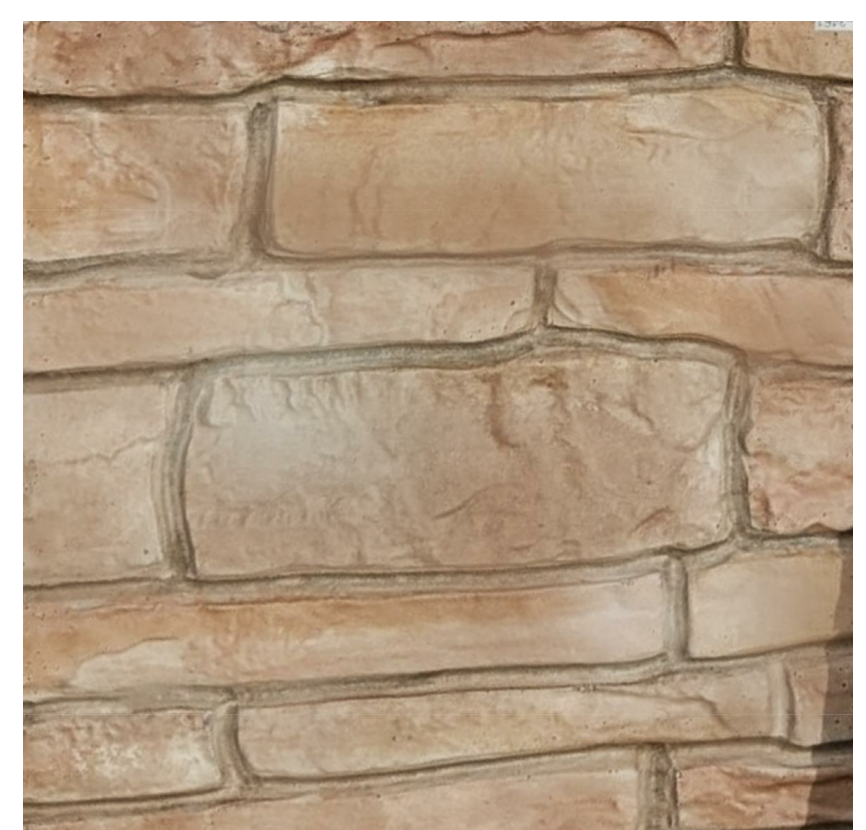
5 TRASH ENCLOSURE NORTH ELEVATION
 SP-9 1/8" = 1'-0"

EXTERIOR ELEVATION LEGEND

	S-1	STUCCO LARIAT PAREX		GL-1	INSULATED VISION GLASS SOLARBAN 80 OPTIBLUE PPG
	S-2	STUCCO SNOWBALL PAREX		GL-1S	INSULATED SPANDELL GLASS AG 43 GRAY (INBOARD) GUARDIAN SUNGUARD
	S-3	STUCCO BASALT PAREX		AL-1	ALUMINUM STOREFRONT CLEAR ANODIZED KAWNEER
	STN-1	STONE CHERRY CREEK LEDGE SUNSET STONE			
	MTL-1	METAL PANEL HS-8 PANEL - CITYSCAPE BERRIDGE			
	MTL-1A	METAL PANEL HS-8 PANEL - ZINC GREY BERRIDGE			
	MTL-2	METAL PANEL FW-12 PANEL - CITYSCAPE BERRIDGE			
	MTL-2A	METAL PANEL FW-12 PANEL - CITYSCAPE BERRIDGE			
	MTL-3	METAL COPING ZINC GREY BERRIDGE			

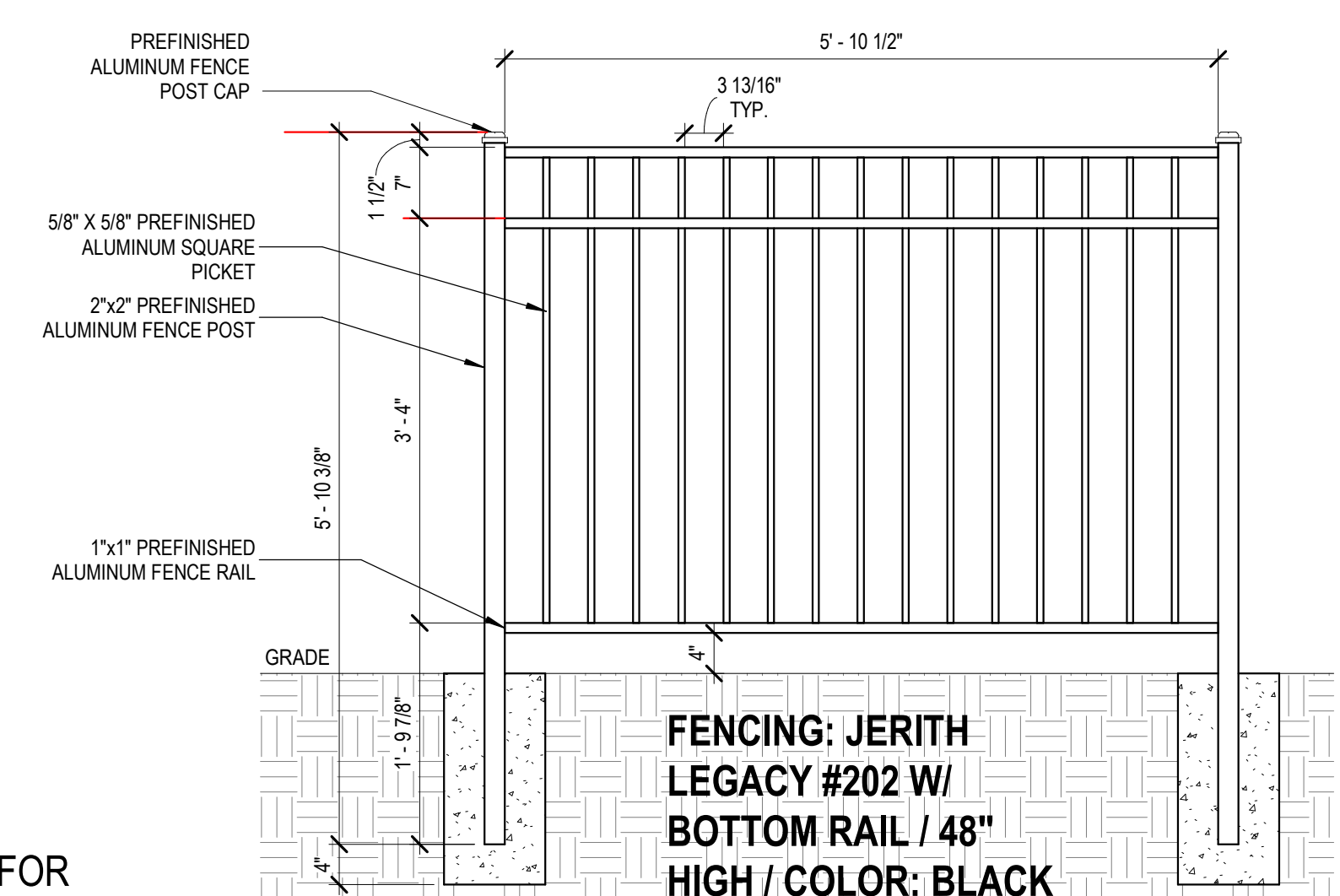


STONE INSTALLED ON BUILDING - STONE IS 1 1/2" TO 6 1/2" HIGH



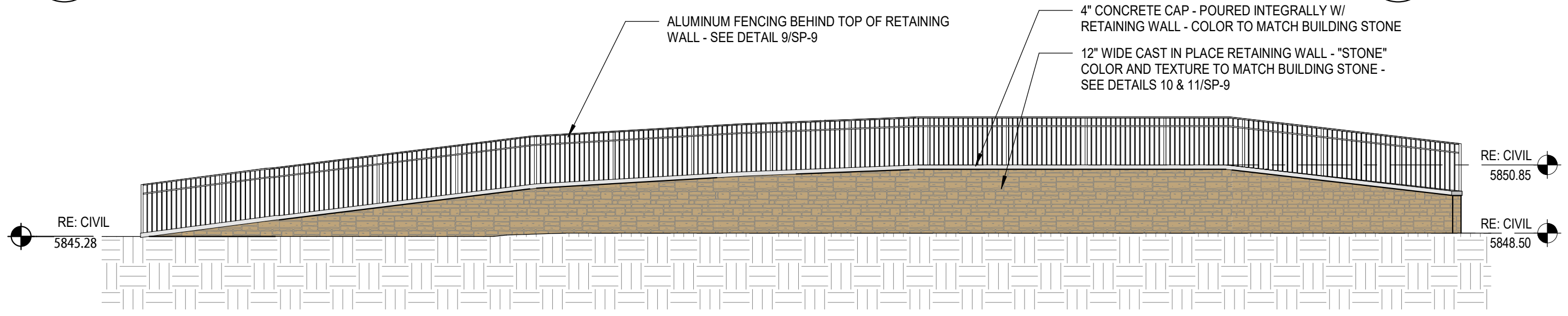
STONE COLOR AND TEXTURE TO MATCH BUILDING STONE - *STONE* IS 1 1/2" TO 6 1/2" HIGH

PROPOSED CONCRETE STAMP "STONE" FOR RETAINING WALL



FENCING: JERITH LEGACY #202 W/ BOTTOM RAIL / 48" HIGH / COLOR: BLACK

9 ALUMINUM FENCE ELEVATION
 SP-9 3/4" = 1'-0"



12 RETAINING WALL/FENCE ELEVATION
 SP-9 1/8" = 1'-0"

BIM 3001/Parker MOB III/Parker MOB III_Redesign C-S_ARCH_V19.rvt
 12/10/2020 9:58:49 AM