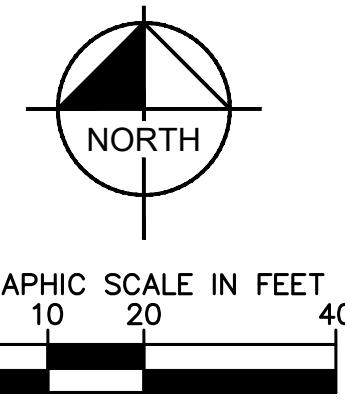
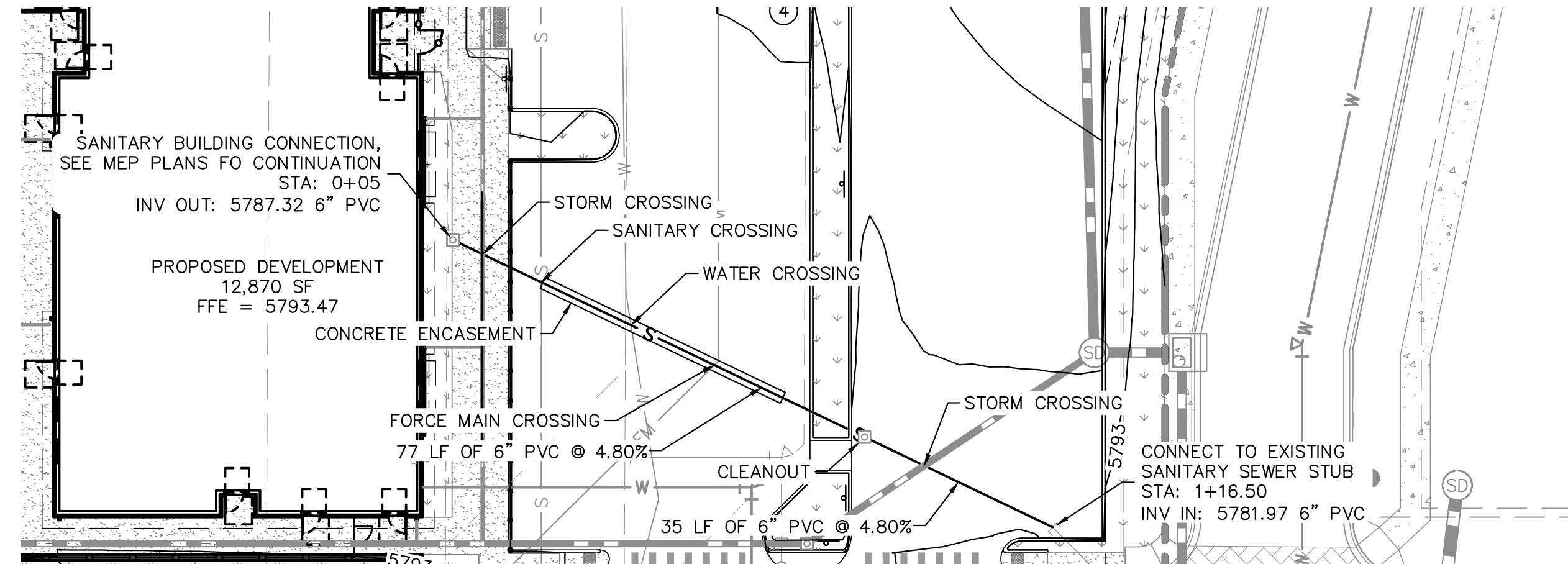








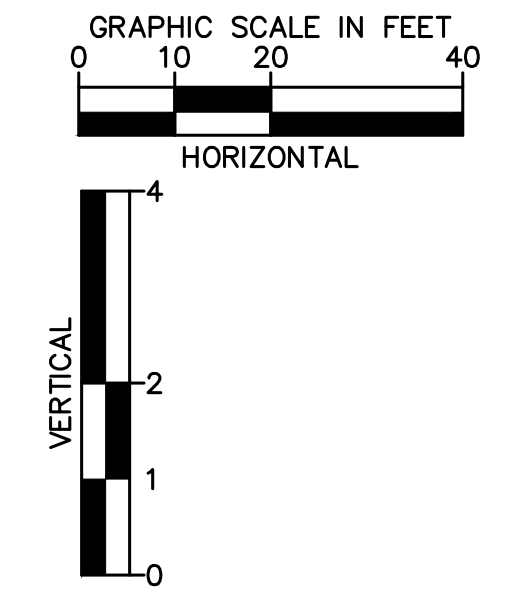
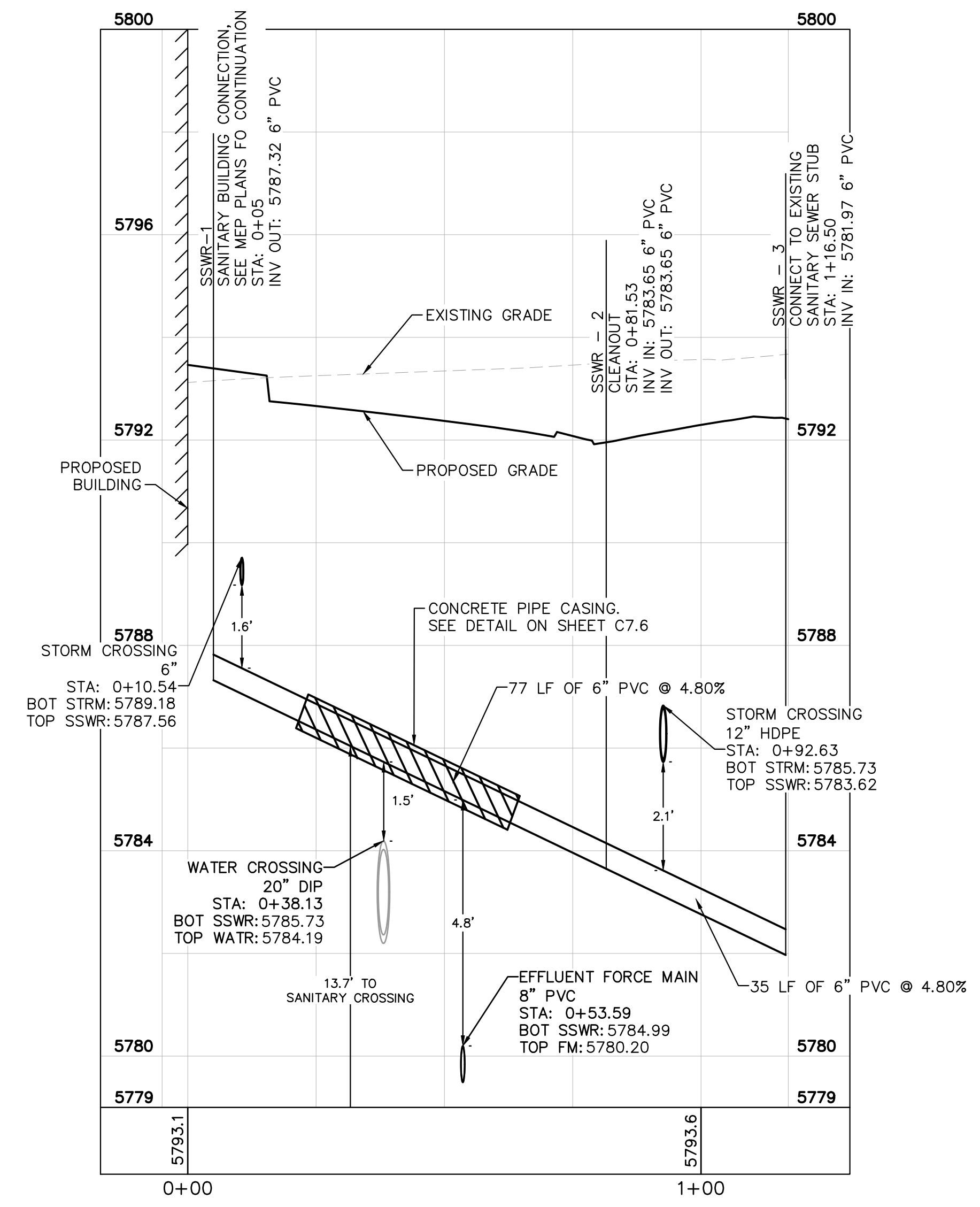
K:\DEV\_CAD\096895001 - Lot 6 Parker and Pine\096895001UT\_SSWR.dwg, News from: Mr. [REDACTED]  
 THIS DOCUMENT CONTAINS UNFINISHED CONCEPTS AND DESIGNS PREPARED HEREIN AS AN INSTRUMENT OF SERVICE FOR THE CLIENT ONLY. IT IS NOT TO BE USED FOR ANY OTHER PROJECT OR FOR WHICH IT WAS PREPARED. REUSE OF AND IMPROPER RELEASE OF THIS DOCUMENT WITHOUT WRITTEN AUTHORIZATION AND ADAPTATION BY KIMLEY-HORN AND ASSOCIATES, INC. SHALL BE WITHOUT LIABILITY TO KIMLEY-HORN AND ASSOCIATES, INC.



**UTILITY LEGEND**

|  |                                       |
|--|---------------------------------------|
|  | EXISTING PROPERTY LINE                |
|  | EXISTING EASEMENT                     |
|  | PROPOSED EASEMENT                     |
|  | FM PROPOSED SANITARY SEWER FORCE MAIN |
|  | EXISTING STORM DRAINAGE LINE          |
|  | EXISTING GAS LINE                     |
|  | EXISTING WATER LINE                   |
|  | EXISTING SANITARY SEWER LINE          |
|  | EXISTING ELECTRIC LINE                |
|  | EXISTING SANITARY SEWER MANHOLE       |

**NOTES:**  
 1. CONTRACTOR TO FIELD VERIFY SIZE, INVERT, AND LOCATION OF ALL EXISTING UTILITIES.



| NO. | REVISION | BY | DATE | APPR |
|-----|----------|----|------|------|
|     |          |    |      |      |

**Kimley»Horn**  
 2021 KIMLEY-HORN AND ASSOCIATES, INC.  
 4582 South Ulster Street, Suite 1500  
 Denver, Colorado 80237 (303) 728-2300

DESIGNED BY: MCN  
 DRAWN BY: NMH  
 CHECKED BY: DLS  
 DATE: 05/07/2021

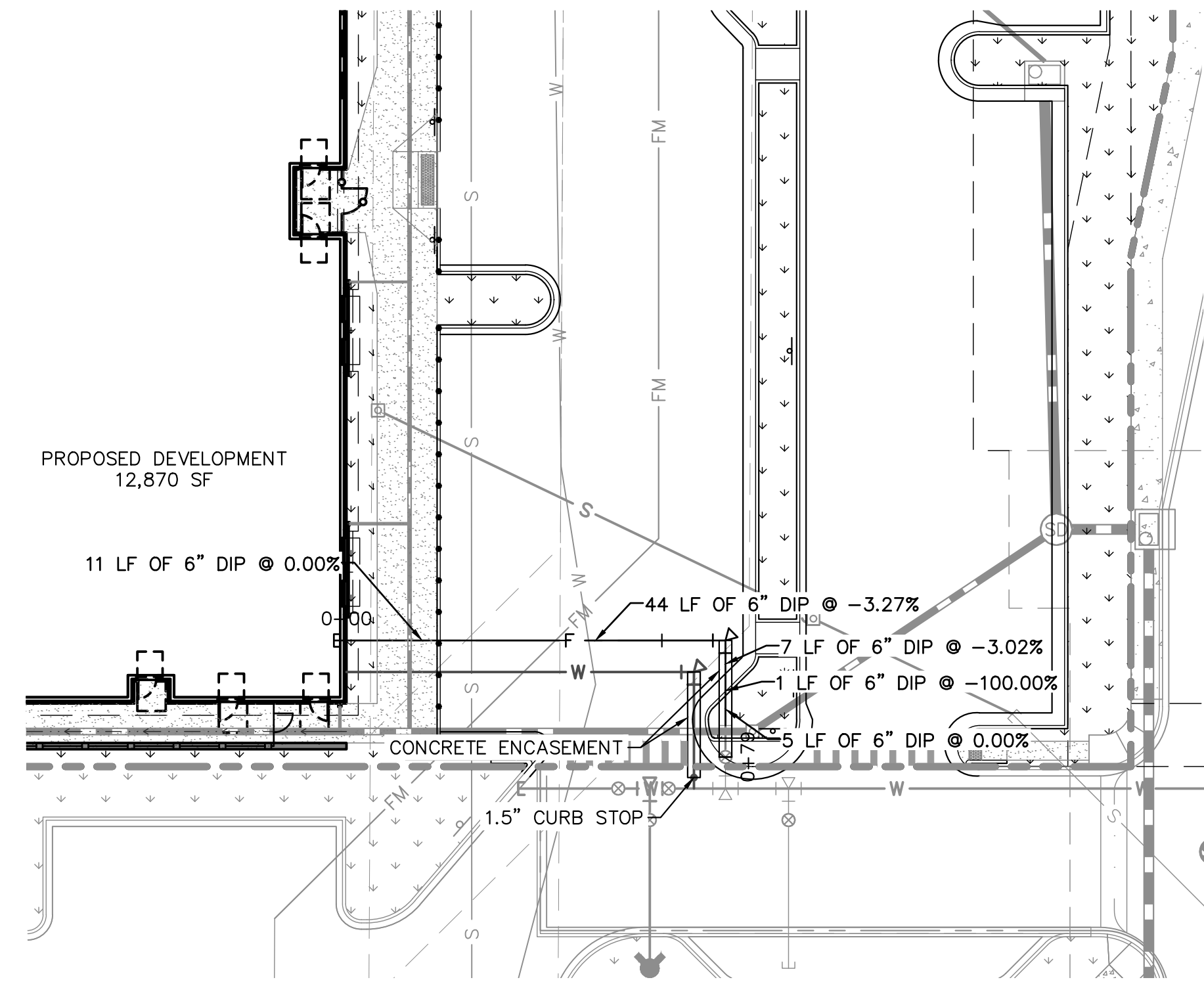
**LOT 6 PARKER AND PINE FILING 1**  
 PARKER, CO  
 EVERBROOK ACADEMY CONSTRUCTION DOCUMENTS  
 SANITARY SEWER LINE PLAN AND PROFILE



PROJECT NO.  
 096895001  
 DRAWING NAME  
 096895001UT\_SSWR

C7.3

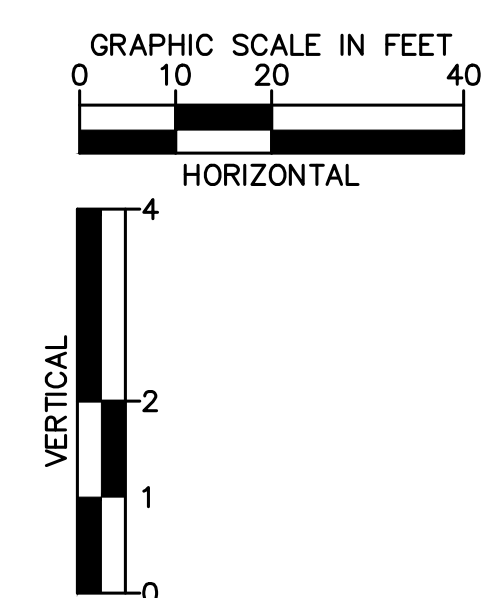
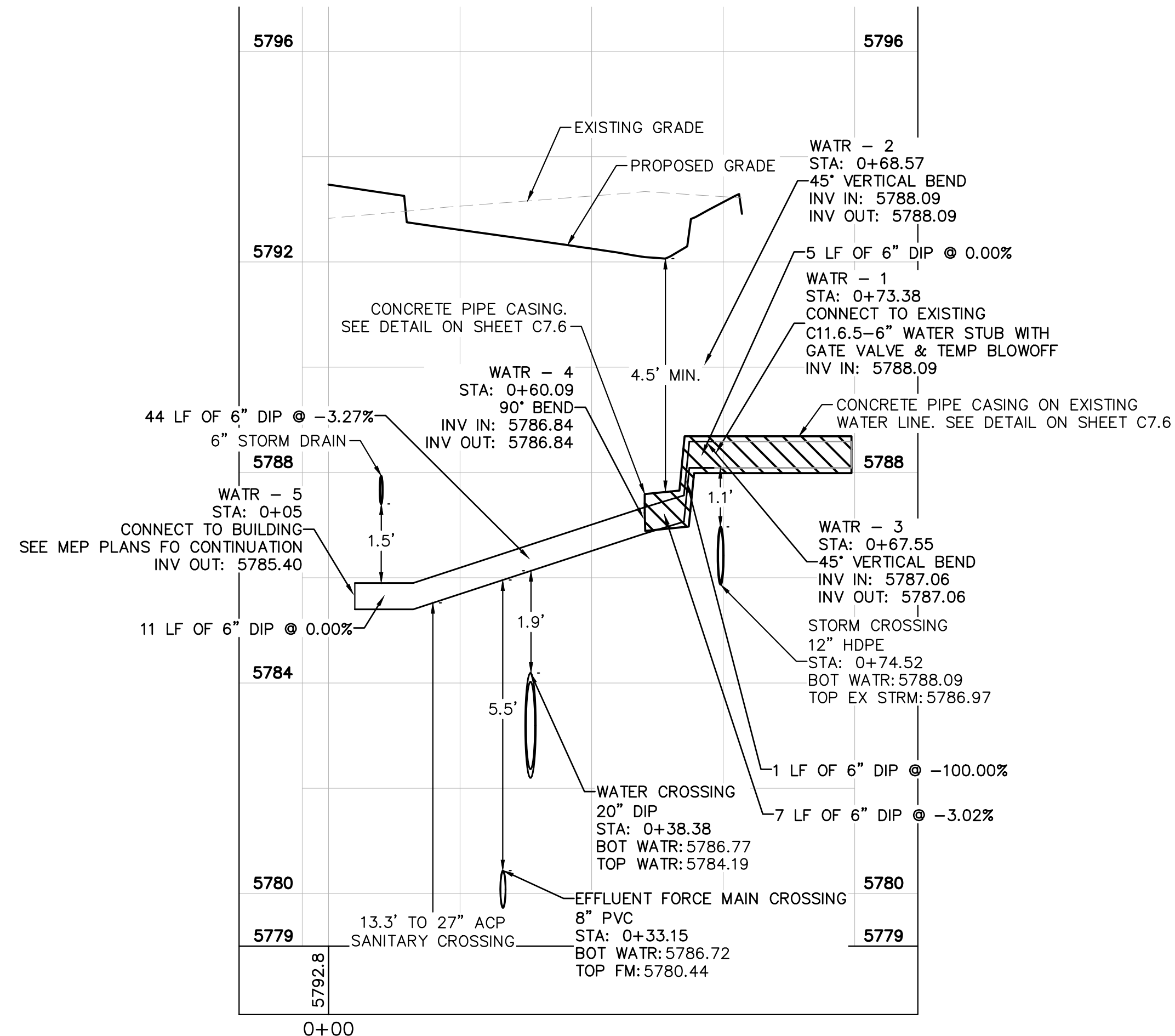
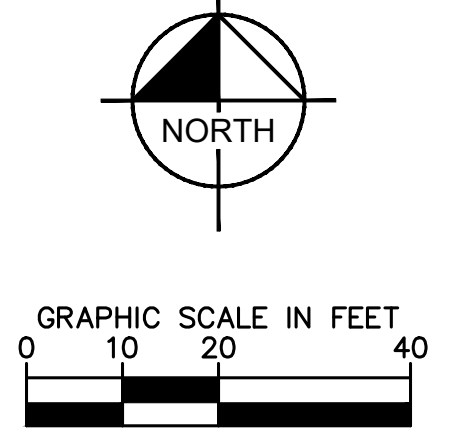
K:\DEV\_CAD\096895001 - Lot 6 Parker & Pine\096895001UT\_WATR.dwg  
 News: 1/1/2021 10:00 AM  
 THE DOCUMENT CONTAINS CONCEPTS AND DESIGNS PREPARED HEREIN, AS AN INSTRUMENT OF SERVICE, FOR THE EXCLUSIVE USE OF THE CLIENT FOR WHICH IT WAS PREPARED. REUSE OR IMPROPER RELEASE ON THIS DOCUMENT WITHOUT WRITTEN AUTHORIZATION AND ADAPTATION BY KIMLEY-HORN AND ASSOCIATES, INC. SHALL BE WITHOUT LIABILITY TO KIMLEY-HORN AND ASSOCIATES, INC.



**LEGEND:**

|  |                              |
|--|------------------------------|
|  | PROPERTY LINE                |
|  | EXISTING WATER LINE          |
|  | PROPOSED WATER LINE          |
|  | EXISTING SANITARY SEWER LINE |
|  | PROPOSED SANITARY SEWER LINE |
|  | PROPOSED STORM LINE          |
|  | PROPOSED FIRE LINE           |
|  | PROPOSED FORCE MAIN          |

- WATER NOTES**
- CONTRACTOR TO POTHOLE EXISTING UTILITY LINES AT WATER LINE CROSSING AREAS PRIOR TO CONSTRUCTION.
  - WATER LINE CONNECTION ELEVATION TO EXISTING WATER MAINS IS APPROXIMATE. CONTRACTOR TO POTHOLE AND VERIFY TIE IN ELEVATION PRIOR TO CONSTRUCTION OF WATER MAIN.
  - CONTRACTOR TO MEET THE INSTALLATION REQUIREMENTS BY THE PARKER WATER AND SANITATION DISTRICT DESIGN STANDARDS AND CONSTRUCTION SPECIFICATIONS.
  - VERTICAL BENDS AND DEFLECTIONS MAYBE UTILIZED TO PROVIDE VERTICAL CHANGES IN ACCORDANCE WITH PWSD STANDARDS AS NEEDED.
  - ALL WATER LINES SHALL BE INSTALLED AT LEAST 4.5 FEET BELOW THE SURFACE OF THE GROUND.



| NO. | REVISION | BY | DATE | APPR |
|-----|----------|----|------|------|
|     |          |    |      |      |

**Kimley»Horn**  
 2021 KIMLEY-HORN AND ASSOCIATES, INC.  
 4582 South Ulster Street, Suite 1500  
 Denver, Colorado 80237 (303) 728-2300

DESIGNED BY: MCN  
 DRAWN BY: NMH  
 CHECKED BY: DLS  
 DATE: 05/07/2021

**LOT 6 PARKER AND PINE FILING 1**  
 PARKER, CO  
 EVERBROOK ACADEMY CONSTRUCTION DOCUMENTS  
 WATER LINE PLAN AND PROFILE



PROJECT NO.  
096895001

DRAWING NAME  
096895001UT\_WATR

C7.4



K:\DEV\_CAD\096895001 - Lot 6 Parker and Pine Filing 1 - Everbrook Academy Construction Documents - Water & Sanitary Sewer Details - 05/07/2021.dwg - Newsprint - Max. The document contains information that is the property of Kimley-Horn and Associates, Inc. and is intended for the use of the client for whom it was prepared. Release of this document without written authorization and adaptation by Kimley-Horn and Associates, Inc. shall be without liability to Kimley-Horn and Associates, Inc.

**INSPECTION POLICY:**

1. ALL SERVICE INSPECTIONS MUST BE SCHEDULED WITH THE DISTRICT OFFICE AT LEAST 24 HOURS IN ADVANCE OF THE REQUESTED INSPECTION.
2. IF THE CONTRACTOR IS NOT READY FOR INSPECTION WHEN THE INSPECTOR ARRIVES AT THE SITE, A RE-INSPECTION WILL HAVE TO BE SCHEDULED IN ACCORDANCE WITH NOTE 1 ABOVE AND A RE-INSPECTION FEE CHARGED.
3. SHOULD THE SERVICE LINES BE DAMAGED BY LATER CONSTRUCTION, AN INSPECTION OF THE REPAIR WILL BE REQUIRED IN ACCORDANCE WITH NOTES 1 AND 2 ABOVE.
4. THE CONTRACTOR SHALL LEAVE ALL PIPE AND FITTINGS EXPOSED FOR THE INSPECTOR TO OBSERVE. INSPECTORS WILL NOT ENTER ANY EXCAVATIONS TO CHECK MATERIALS. THE TOP LAYER OF BEDDING CAN BE ADDED AFTER THE INSPECTION HAS BEEN COMPLETED.
5. ALL EXCAVATIONS SHALL BE IN ACCORDANCE WITH OSHA STANDARDS.
6. LOTS WITHOUT BUILDING ADDRESSES OR LOT AND BLOCK NUMBERS BEFORE DISTRICT INSPECTION OR METER SET WILL FAIL AUTOMATICALLY.
7. CONTRACTOR MUST BE PRESENT AT TIME OF INSPECTION UNLESS COORDINATED WITH DISTRICT INSPECTOR.

**INSTALLATION NOTES:**

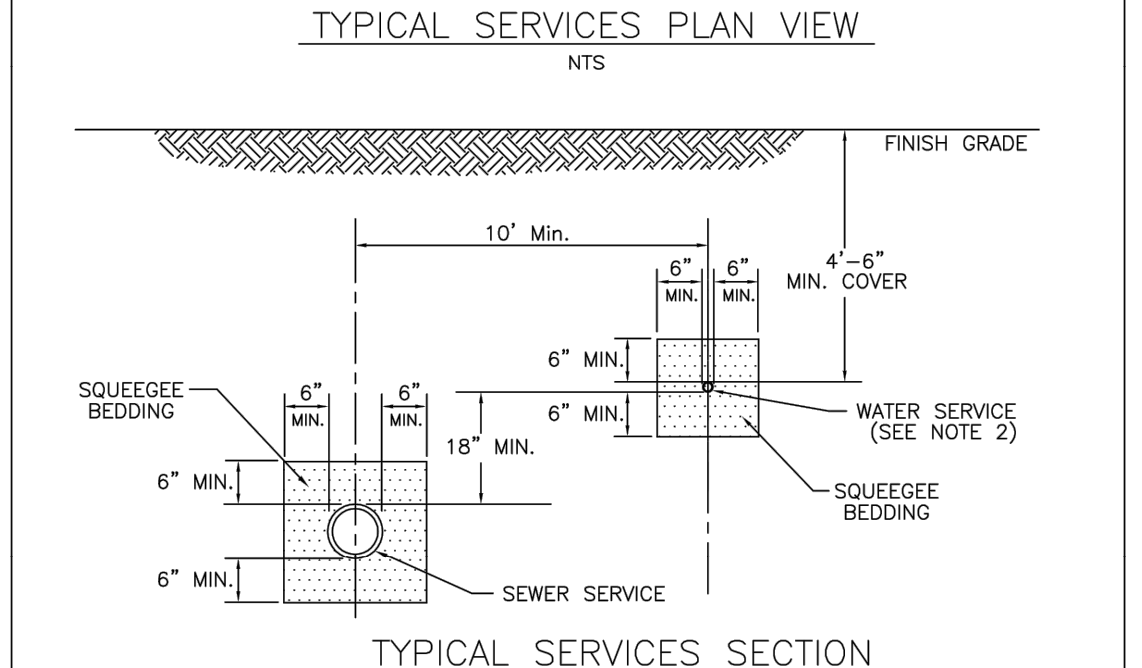
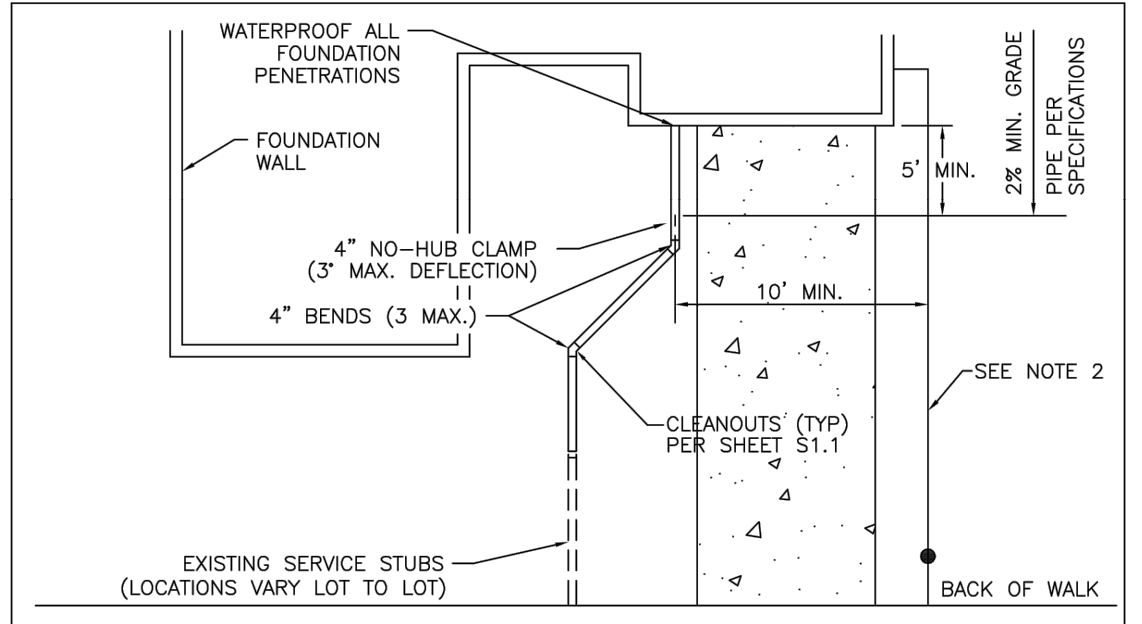
**SEWER:**

1. ACCEPTABLE PIPE MATERIALS ARE TO BE SDR 35 PVC PIPE, ABS PIPE AND PVC SCHD 40 PIPE. APPROVED BEDDING IS TO BE SQUEEGEE.
2. NO-HUB CLAMPS SHALL BE USED TO JOIN 2 MALE PIPE ENDS WITH A MAXIMUM DEFLECTION OF 3".
3. MINIMUM GRADE SHALL BE 2X.
4. INSTALLATION SHALL INCLUDE NO MORE THAN 3 BENDS. 90° BENDS ARE NOT ALLOWED. SOLVENT WELDED PIPE WILL NOT BE ALLOWED.
5. CLEAN-OUTS SHALL BE INSTALLED AT 100' INTERVALS AND EVERY CHANGE IN DIRECTION. CLEAN-OUTS ARE NOT REQUIRED FOR SERVICES LESS THAN 100' UNLESS THERE ARE CHANGES IN DIRECTION. PROVIDE DUAL CLEAN-OUT WITHIN 5 FEET OF FOUNDATION.
6. STRESSING OF THE PIPE BETWEEN FITTINGS WILL NOT BE ALLOWED.
7. SEWER SERVICE LINE SHALL NOT BE LOCATED UNDER CONCRETE SURFACE.
8. ALL SERVICES WILL BE PERMANENTLY MARKED ON CURB FACE AS FOLLOWS:  
 "S" FOR SANITARY SEWER SERVICE  
 "W" FOR WATER SERVICES

**PARKER WATER & SANITATION DISTRICT**  
DISTRICT POLICIES & INSTALLATION NOTES FOR SEWER SERVICES

|                         |      |       |       |
|-------------------------|------|-------|-------|
| SCALE:                  | NONE | DATE: | 2/96  |
| APPROVED:               | PVR  | 1/08  | 10/16 |
| DIRECTOR OF ENGINEERING |      | 1/18  |       |

SHEET S1.1

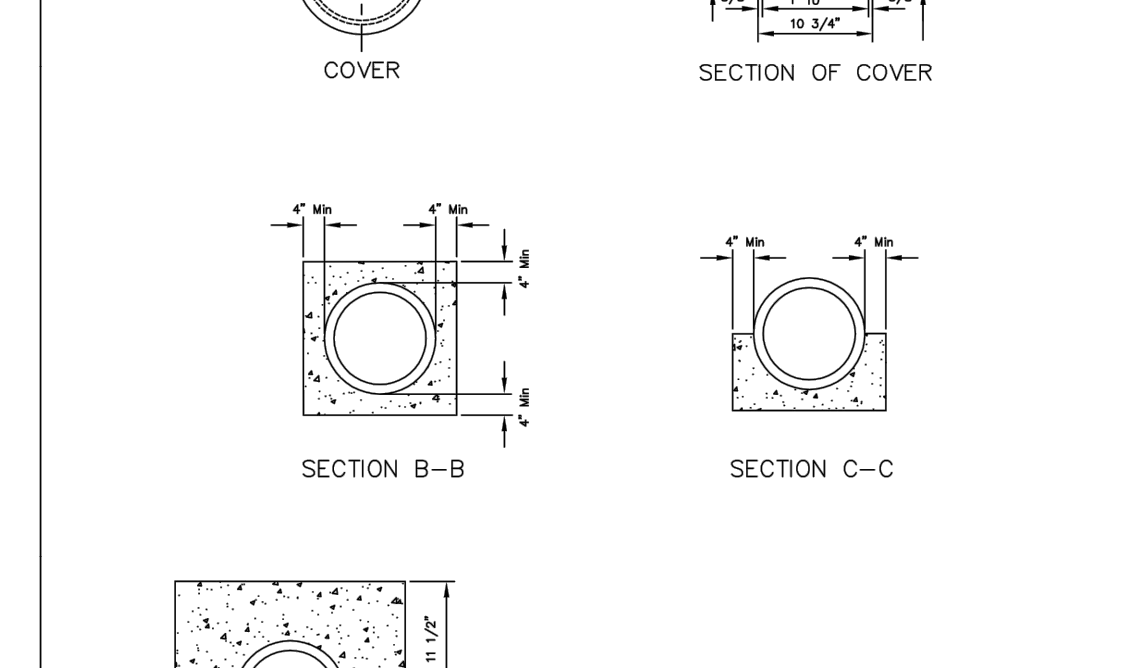
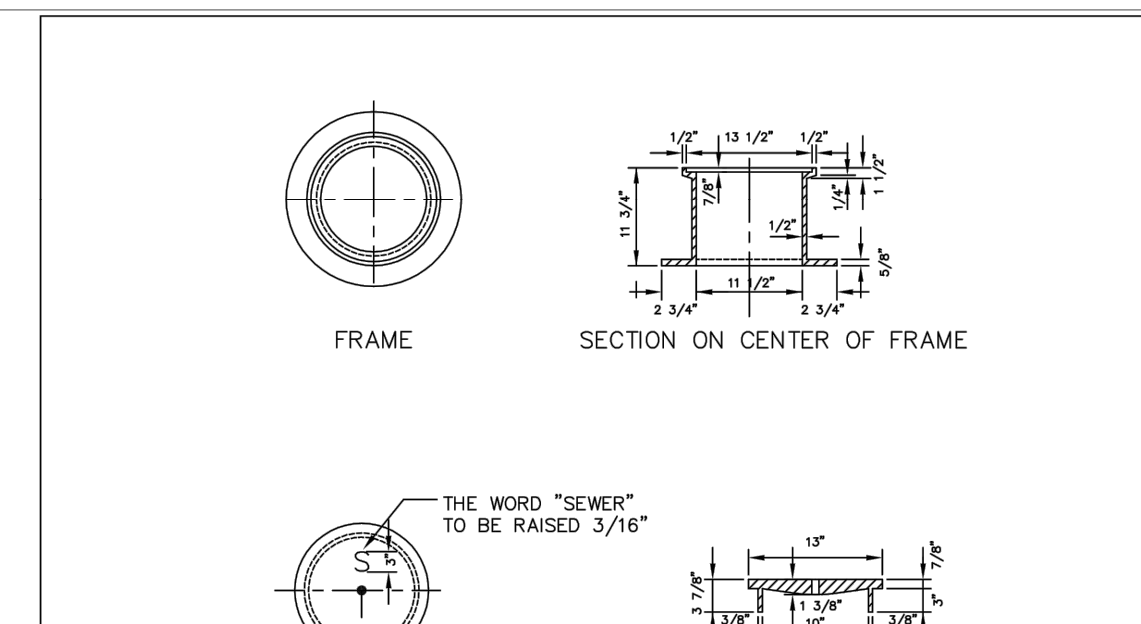


**PARKER WATER & SANITATION DISTRICT**  
TYPICAL SEWER SERVICES

NOTE:  
1. SEE SHEET S1.1 FOR DISTRICT POLICIES AND INSTALLATION NOTES.  
2. TYPICAL WATER SERVICES SHOWN ON SHEET W1.2 IN WATER DETAILS.

|                         |      |       |       |
|-------------------------|------|-------|-------|
| SCALE:                  | NONE | DATE: | 2/96  |
| APPROVED:               | PVR  | 2/00  | 10/16 |
| DIRECTOR OF ENGINEERING |      | 10/16 |       |

SHEET S1.2



**PARKER WATER & SANITATION DISTRICT**  
IN-LINE CLEANOUT SECTIONS

|                         |      |       |       |
|-------------------------|------|-------|-------|
| SCALE:                  | NONE | DATE: | 2/96  |
| APPROVED:               | PVR  | 2/00  | 10/16 |
| DIRECTOR OF ENGINEERING |      | 10/16 |       |

SHEET S4.12

**INSPECTION POLICY:**

1. ALL SERVICE INSPECTIONS MUST BE SCHEDULED AT LEAST 24 HOURS IN ADVANCE OF THE REQUESTED INSPECTION.
2. SERVICE INSPECTIONS WILL OCCUR BETWEEN 1:00 P.M. AND 3:00 P.M. SPECIFIC INSPECTION TIMES ARE NOT AVAILABLE.
3. IF THE CONTRACTOR IS NOT READY FOR INSPECTION WHEN THE INSPECTOR ARRIVES AT THE SITE OR SERVICE FAILS, A RE-INSPECTION WILL HAVE TO BE SCHEDULED IN ACCORDANCE WITH NOTES 1 AND 2 ABOVE AND A RE-INSPECTION FEE CHARGED.
4. SHOULD THE SERVICE LINES BE DAMAGED BY LATER CONSTRUCTION, AN INSPECTION OF THE REPAIR WILL BE REQUIRED IN ACCORDANCE WITH NOTES 1 AND 2 ABOVE.
5. THE CONTRACTOR SHALL LEAVE ALL PIPE AND FITTINGS EXPOSED FOR THE INSPECTOR TO OBSERVE. INSPECTORS WILL NOT ENTER ANY EXCAVATIONS TO CHECK MATERIALS. THE TOP LAYER OF BEDDING CAN BE ADDED AFTER THE INSPECTION HAS BEEN COMPLETED.
6. ALL EXCAVATIONS SHALL BE IN ACCORDANCE WITH OSHA STANDARDS.
7. LOTS WITHOUT BUILDING ADDRESSES BEFORE DISTRICT INSPECTION OR METER SET WILL FAIL AUTOMATICALLY.
8. CONTRACTOR MUST BE PRESENT AT TIME OF INSPECTION UNLESS COORDINATED WITH DISTRICT INSPECTOR.

**INSTALLATION NOTES:**

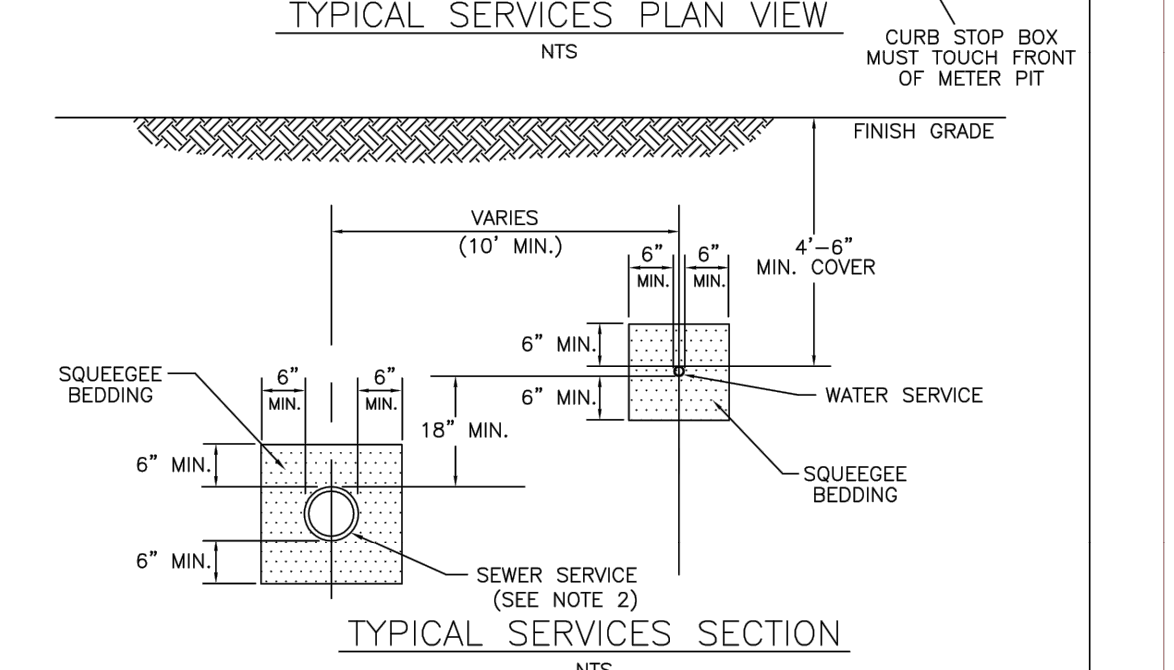
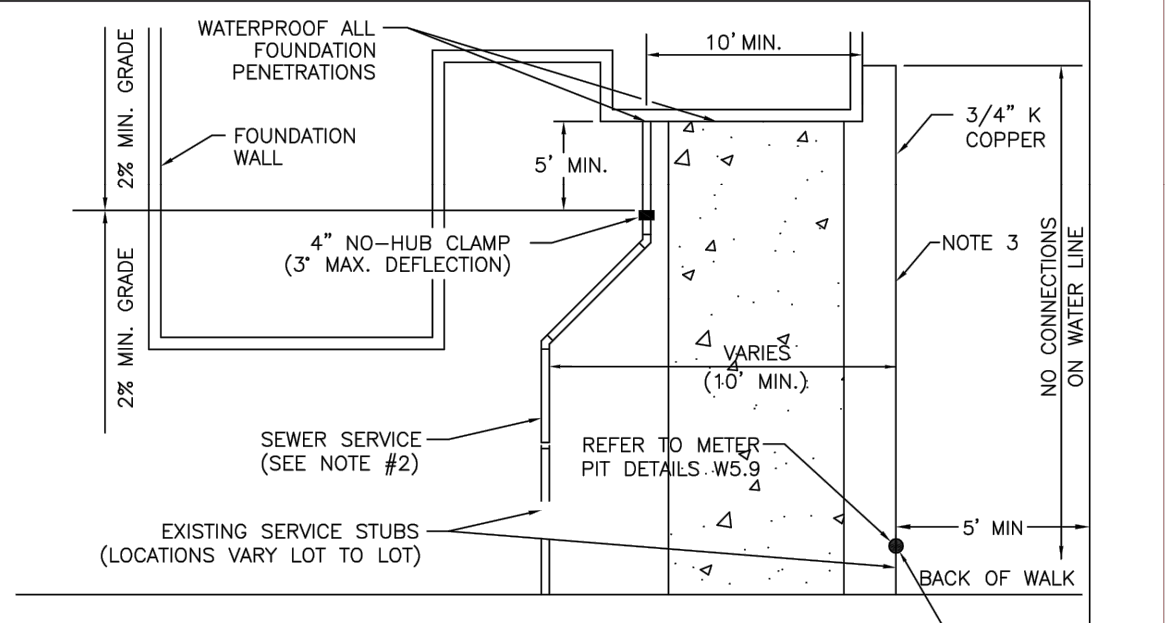
**WATER:**

1. ACCEPTABLE PIPE MATERIALS SHALL BE K-COPPER TUBING (3/4" MIN.).
2. APPROVED BEDDING TO BE SQUEEGEE.
3. ONLY ONE COUPLING WILL BE ALLOWED BETWEEN THE STUB-IN AND BUILDING. COMPRESSION COUPLINGS WILL NOT BE ALLOWED ON NEW CONSTRUCTION. SILVER SOLDERED JOINTS MUST BE USED ON SERVICES LARGER THAN 3/4". SILVER SOLDERED JOINTS MUST BE INSPECTED BY PWSD PRIOR TO BURIAL. FLARED COUPLINGS WILL BE ALLOWED ON ALL SERVICES 3/4" AND SMALLER.
4. A WATER SERVICE WHICH CROSSES A SEWER SERVICE CAN DO SO ONLY AT A 45-90° ANGLE. WATER SERVICES SHALL BE LOCATED A MINIMUM OF 18" ABOVE SEWER SERVICE.
5. WATER SERVICE FOUNDATION PENETRATIONS SHALL BE WATERPROOFED USING MASTIC OR OTHER APPROVED METHOD. CRAWL SPACE REQUIRES CONTINUOUS COPPER WITH A 1" BURF.
6. CURB STOP MUST BE PLUMB AND CENTERED OVER THE NIT. IT SHOULD BE STRAPPED TO THE METER PIT (RESIDENTIAL INSTALLATIONS) OR CENTERED OVER THE EASEMENT LINE (COMMERCIAL INSTALLATIONS). THE ASSEMBLY MUST BE AT OR SLIGHTLY ABOVE FINISHED GRADE.
7. MOVED CURB BOXES MUST BE INSPECTED BY PWSD PRIOR TO BURIAL.
8. WATERLINE MUST BE ATTACHED TO A SUPPORT BOARD THAT IS MOUNTED TO THE WALL.
9. NO VOIDS ALLOWED UNDER WATERLINES FROM STOP BOX TO FOUNDATION.
10. CURBSTOP BOXES AND METER PITS CANNOT BE IN DRIVEWAYS.
11. ONLY 3/4" (JUMPER) PIPES (RESIDENCES) ARE ALLOWED. (JUMPER) PIPES WILL BE REMOVED PRIOR TO METER SET DATE.
12. ALL SERVICES WILL BE PERMANENTLY MARKED ON CURB FACE AS FOLLOWS:  
 "S" FOR SANITARY SEWER SERVICE  
 "W" FOR WATER SERVICES
13. NO SPLICES OR FLARED COUPLINGS ALLOWED ON SERVICES LARGER THAN 3/4". SILVER SOLDERED JOINTS MUST BE USED IN MOVING STOPBOXES ON SERVICES LARGER THAN 3/4". SILVER SOLDERED JOINTS MUST BE INSPECTED BY PWSD PRIOR TO BURIAL. FLARED COUPLINGS WILL BE ALLOWED ON ALL SERVICES 3/4" AND SMALLER.

**PARKER WATER & SANITATION DISTRICT**  
DISTRICT POLICIES & INSTALLATION NOTES FOR WATER SERVICES

|                         |      |       |       |
|-------------------------|------|-------|-------|
| SCALE:                  | NONE | DATE: | 2/96  |
| APPROVED:               | PVR  | 1/04  | 10/16 |
| DIRECTOR OF ENGINEERING |      | 10/16 |       |

SHEET W1.1

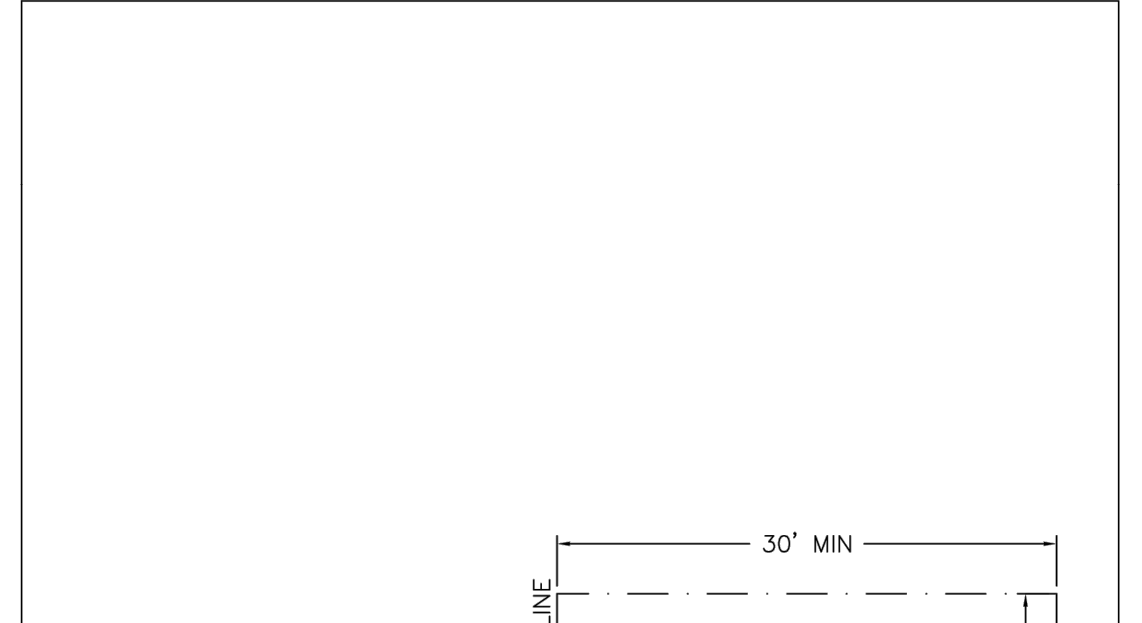


**PARKER WATER & SANITATION DISTRICT**  
TYPICAL WATER SERVICES

NOTE:  
1. SEE SHEET W1.1 FOR DISTRICT POLICIES AND INSTALLATION NOTES.  
2. REFER TO SEWER SERVICES DETAIL SHEET S1.2.  
3. 4" PVC SLEEVES REQUIRED FOR SERVICE LINES UNDER CONCRETE SURFACE.

|                         |      |       |       |
|-------------------------|------|-------|-------|
| SCALE:                  | NONE | DATE: | 2/96  |
| APPROVED:               | PVR  | 1/04  | 10/16 |
| DIRECTOR OF ENGINEERING |      | 12/07 | 1/16  |

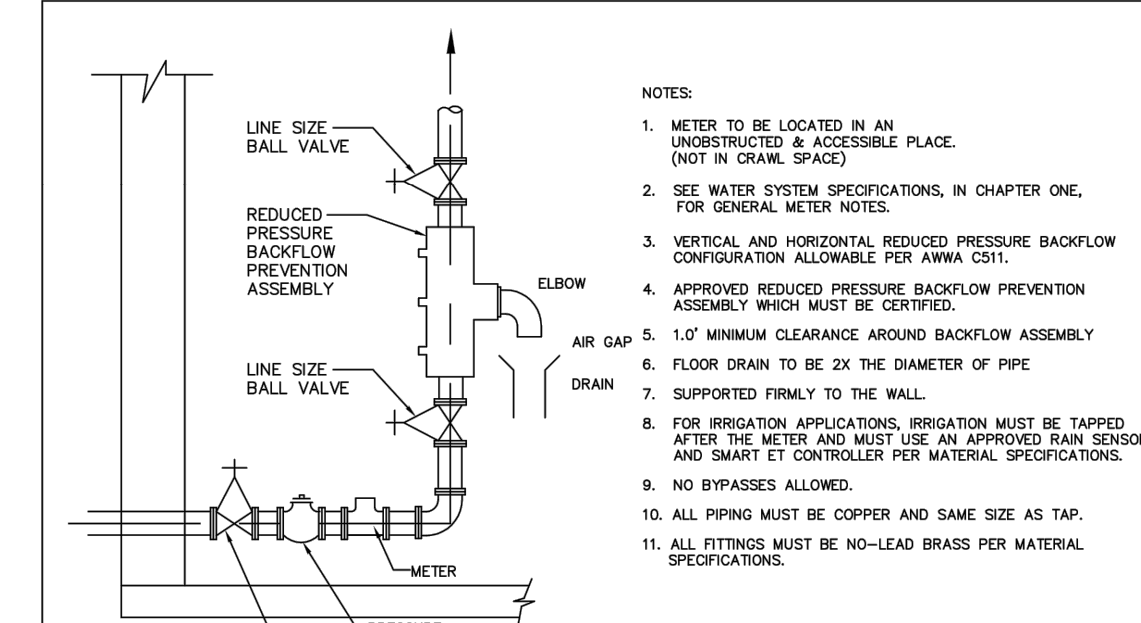
SHEET W1.2



**PARKER WATER & SANITATION DISTRICT**  
TYPICAL WATER SERVICES STUB-OUT CONFIGURATIONS

|                         |      |       |       |
|-------------------------|------|-------|-------|
| SCALE:                  | NONE | DATE: | 2/96  |
| APPROVED:               | PVR  | 1/16  | 10/16 |
| DIRECTOR OF ENGINEERING |      | 10/16 |       |

SHEET W3.5

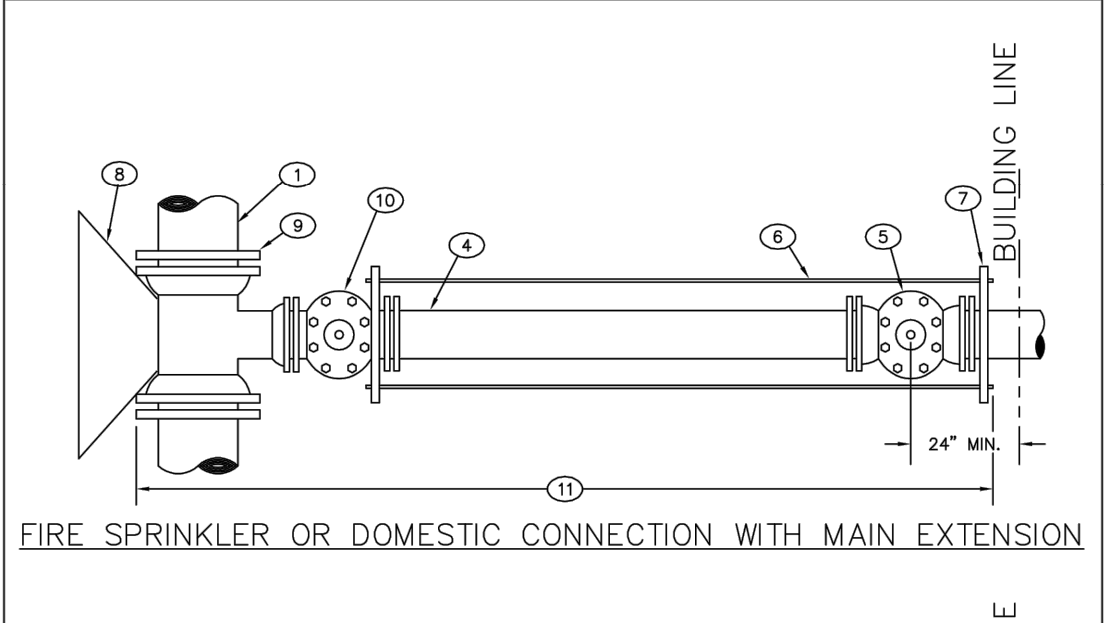


**PARKER WATER & SANITATION DISTRICT**  
INSIDE COMMERCIAL METER INSTALLATION FOR 6" & SMALLER PIPE

NOTE:  
1. METER TO BE LOCATED IN AN UNOBSTRUCTED & ACCESSIBLE PLACE. (NOT IN GRADE SPACE)  
2. SEE WATER SYSTEM SPECIFICATIONS, IN CHAPTER ONE, FOR GENERAL METER NOTES.  
3. VERTICAL AND HORIZONTAL REDUCED PRESSURE BACKFLOW PREVENTION CONFIGURATION ALLOWABLE PER ANWA C611.  
4. APPROVED REDUCED PRESSURE BACKFLOW PREVENTION ASSEMBLY WHICH MUST BE CERTIFIED.  
5. 1.0' MINIMUM CLEARANCE AROUND BACKFLOW ASSEMBLY.  
6. FLOOR DRAIN TO BE 2X THE DIAMETER OF PIPE.  
7. SUPPORTED FIRMLY TO THE WALL.  
8. FOR IRRIGATION APPLICATIONS, IRRIGATION MUST BE TAPPED AFTER THE METER AND MUST USE AN APPROVED RAIN SENSOR AND SMART IY CONTROLLER PER MATERIAL SPECIFICATIONS.  
9. NO BYPASSES ALLOWED.  
10. ALL PIPING MUST BE COPPER AND SAME SIZE AS TAP.  
11. ALL FITTINGS MUST BE NO-LEAD BRASS PER MATERIAL SPECIFICATIONS.

|                         |      |       |       |
|-------------------------|------|-------|-------|
| SCALE:                  | NONE | DATE: | 2/96  |
| APPROVED:               | PVR  | 2/98  | 1/16  |
| DIRECTOR OF ENGINEERING |      | 2/00  | 10/16 |

SHEET W5.6



**PARKER WATER & SANITATION DISTRICT**  
3" AND LARGER DOMESTIC AND FIRE SPRINKLER CONNECTIONS

LEGEND:  
 ① EXISTING MAIN  
 ② TAPPING VALVE  
 ③ DOUBLE SPOUT PIPE  
 ④ PROPERTY LINE VALVE  
 ⑤ TEE  
 ⑥ PIPE CLAMP  
 ⑦ CONCRETE KICKBLOCK  
 ⑧ M.J. ANCHORING TEE (SWIVEL TEE)  
 ⑨ M.J. VALVE  
 ⑩ POLYETHYLENE WRAPPED

|                         |      |       |       |
|-------------------------|------|-------|-------|
| SCALE:                  | NONE | DATE: | 2/96  |
| APPROVED:               | PVR  | 1/16  | 10/16 |
| DIRECTOR OF ENGINEERING |      | 10/16 |       |

SHEET W5.18

| NO. | REVISION | BY | DATE |
|-----|----------|----|------|
|     |          |    |      |
|     |          |    |      |
|     |          |    |      |

**Kimley»Horn**

2021 KIMLEY-HORN AND ASSOCIATES, INC.  
4582 South Ulster Street, Suite 1500  
Denver, Colorado 80237 • (303) 728-2300

DESIGNED BY: MCN  
DRAWN BY: NMH  
CHECKED BY: DLS  
DATE: 05/07/2021

LOT 6 PARKER AND PINE FILING 1  
PARKER, CO  
EVERBROOK ACADEMY CONSTRUCTION DOCUMENTS  
WATER & SANITARY SEWER DETAILS

**PARKER WATER & SANITATION DISTRICT**  
46391

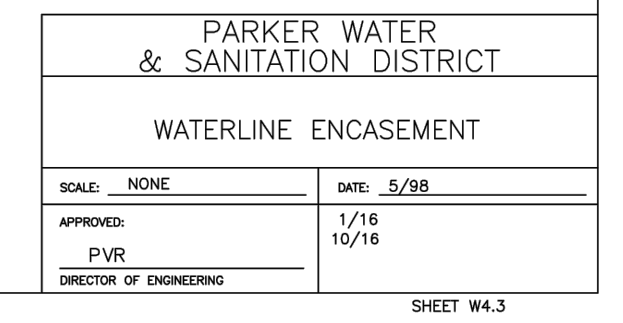
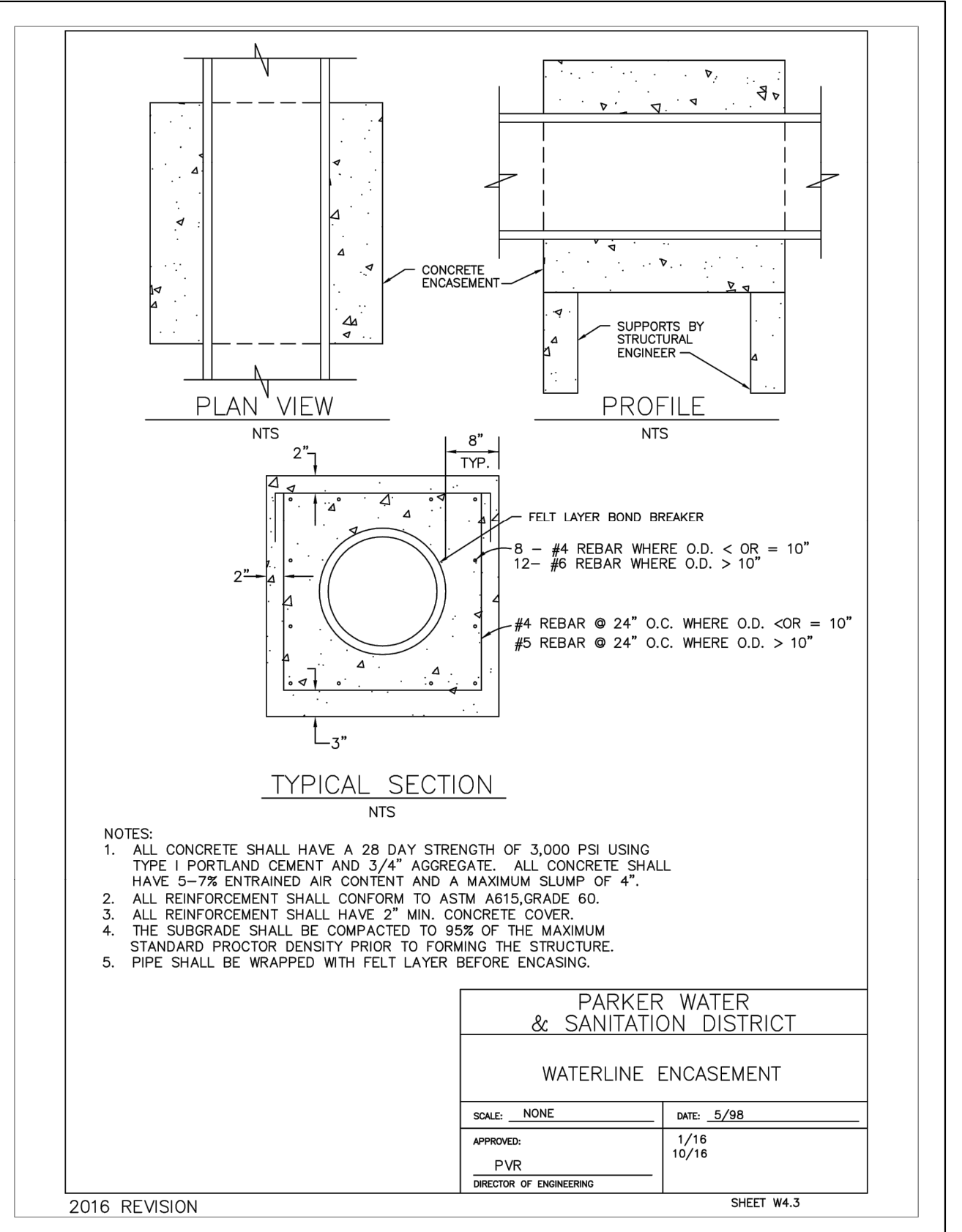
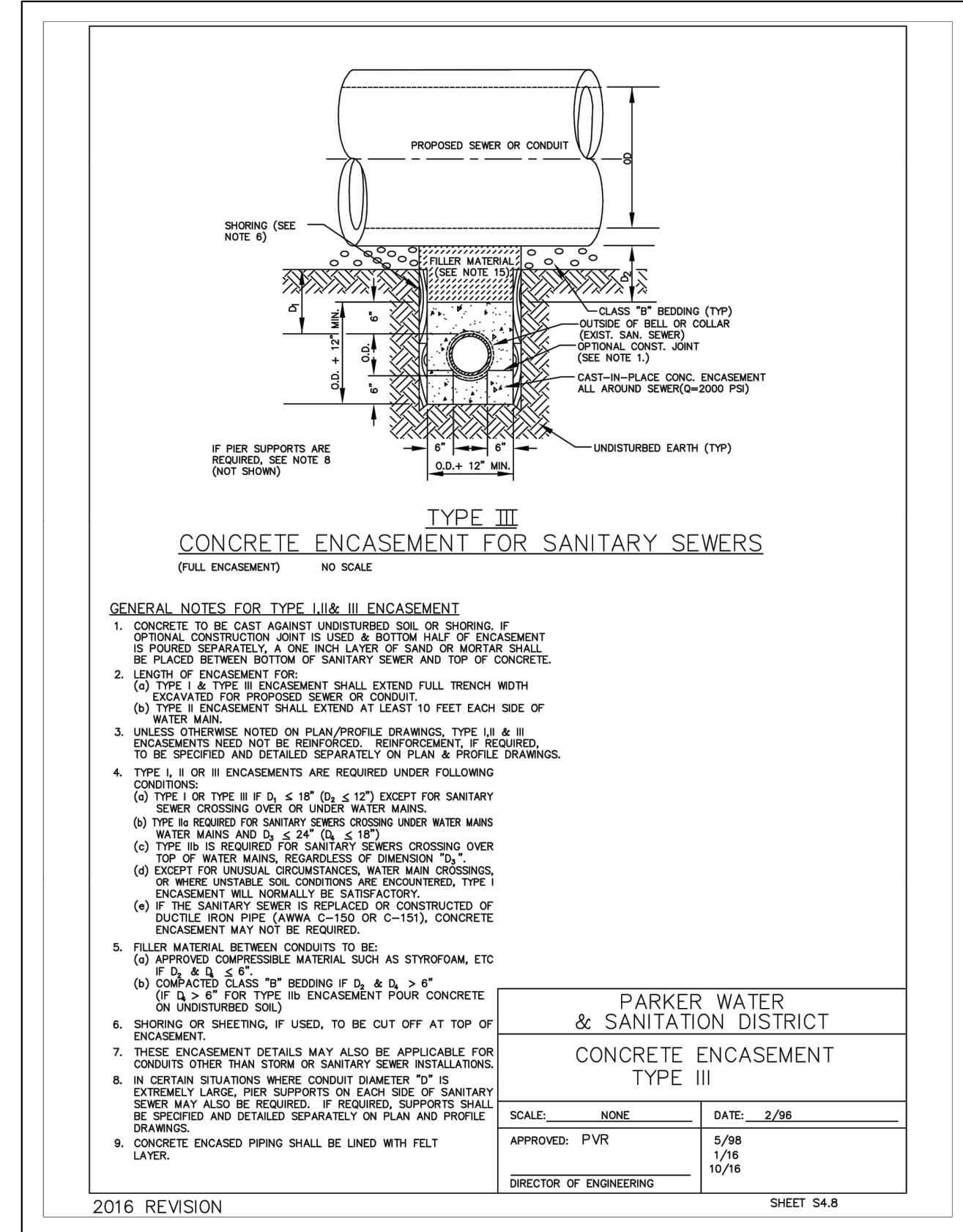
PROJECT NO.  
096895001

DRAWING NAME  
096895001UT\_DTLS

C7.5



K:\DEV\_CAD\096895001 - Lot 6 Parker & Sanitation Districts\096895001UT\_DTLS.dwg - Newstest.mxd  
 THE DOCUMENT CONTAINS UNREVIEWED CONCEPTS AND DESIGNS PRESENTED HEREIN AS AN INSTRUMENT OF SERVICE. IT IS INTENDED ONLY FOR THE USE OF THE CLIENT AND IS NOT TO BE REPRODUCED OR TRANSMITTED IN ANY FORM OR BY ANY MEANS, ELECTRONIC OR MECHANICAL, WITHOUT THE WRITTEN PERMISSION OF KIMLEY-HORN AND ASSOCIATES, INC.



| NO. | REVISION | BY | DATE | APPR |
|-----|----------|----|------|------|
|     |          |    |      |      |
|     |          |    |      |      |
|     |          |    |      |      |
|     |          |    |      |      |

**Kimley»Horn**  
 2021 KIMLEY-HORN AND ASSOCIATES, INC.  
 4582 South Ulster Street, Suite 1500  
 Denver, Colorado 80237 (303) 728-2300

DESIGNED BY: MCN  
 DRAWN BY: NMH  
 CHECKED BY: DLS  
 DATE: 05/07/2021

**LOT 6 PARKER AND PINE FILING 1**  
 PARKER, CO  
 EVERBROOK ACADEMY CONSTRUCTION DOCUMENTS  
 WATER & SANITARY SEWER DETAILS



PROJECT NO.  
096895001

DRAWING NAME  
096895001UT\_DTLS

C7.6

