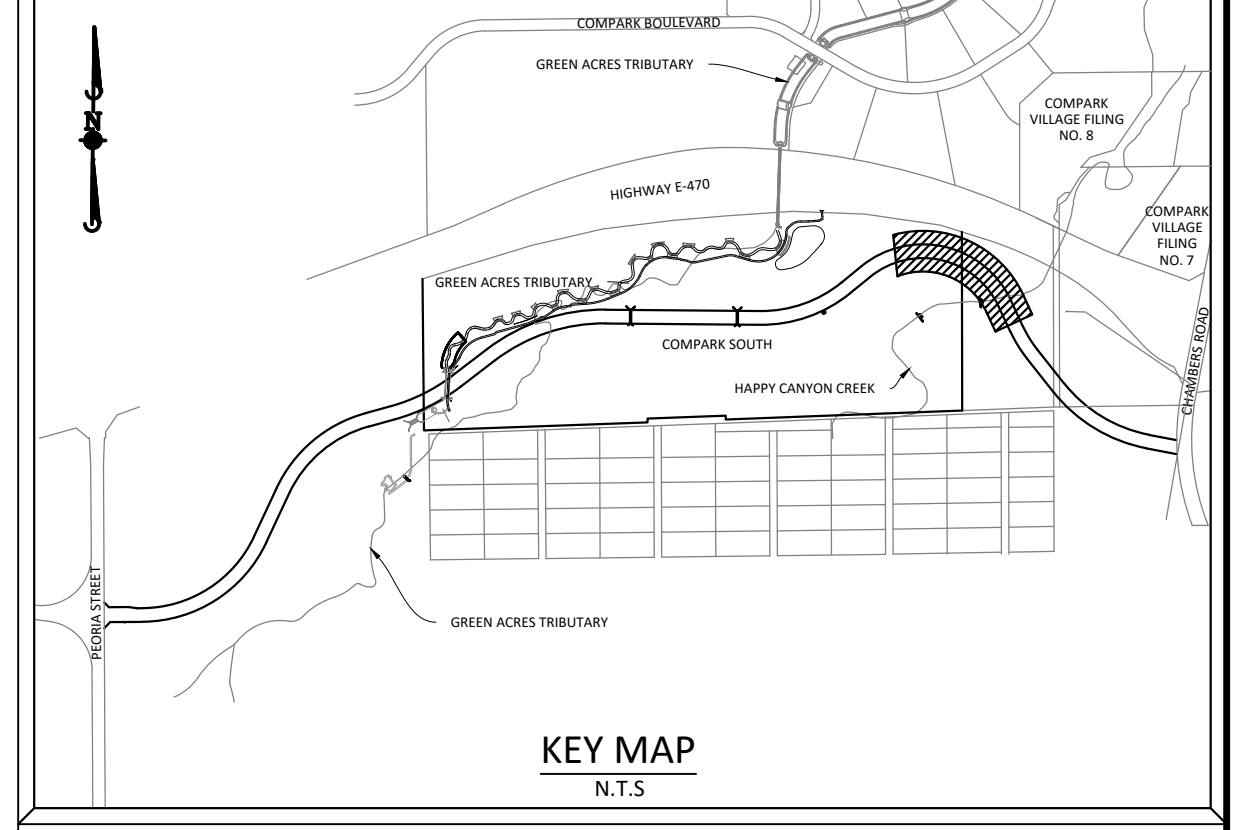
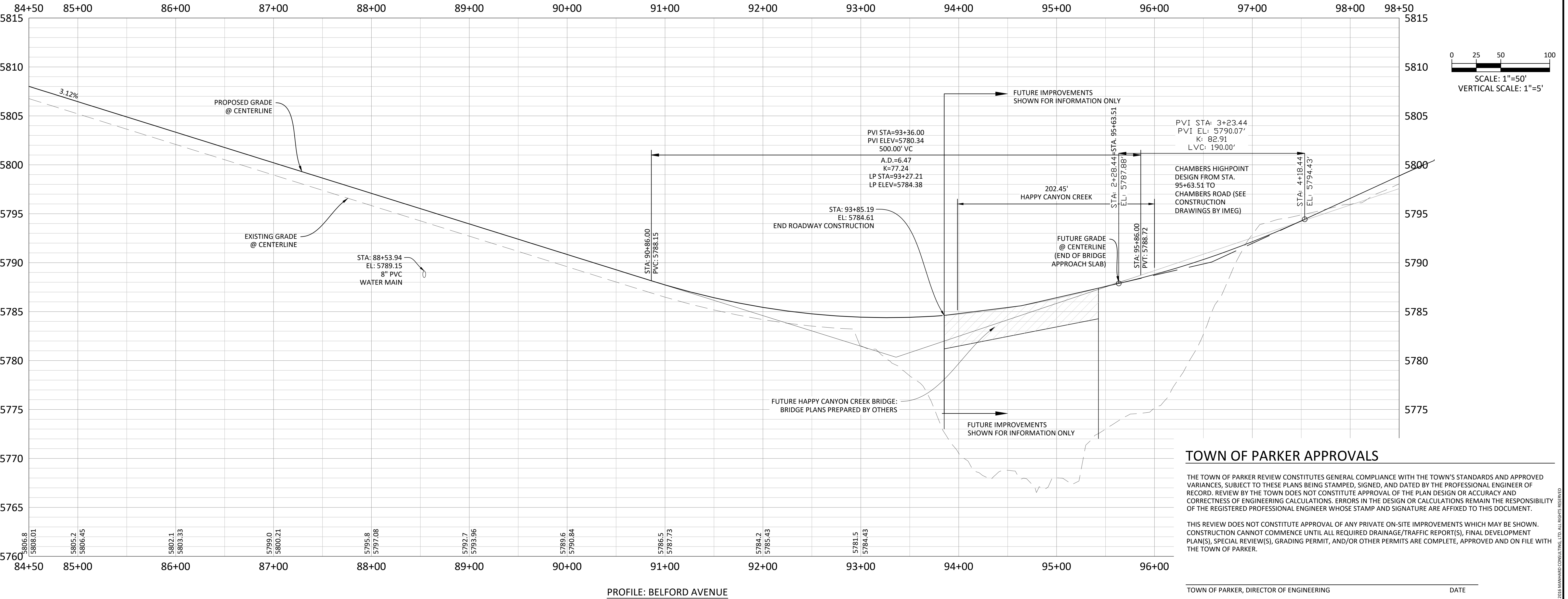


PLAN: BELFORD AVENUE



**SOURCE BENCHMARKS:**  
 DOUGLAS COUNTY BM 1.115010  
 A DOUGLAS COUNTY GIS MONUMENT SET IN CONCRETE LOCATED APPROXIMATELY 130 FEET SOUTHWESTERLY OF THE CENTERLINE OF CHAMBERS ROAD AND 95 FEET NORTHWESTERLY OF THE CENTERLINE OF COMPARK BOULEVARD. ELEVATION = 5752.84 (NAVD 88)

- NOTES:**
- 1) REFER TO GENERAL NOTES ON SHEET 2 FOR ALL APPLICABLE CONSTRUCTION STANDARDS
  - 2) ALL STATIONING IS CENTERLINE UNLESS OTHERWISE NOTED. REFER TO FINAL PLAT FOR RIGHT-OF-WAY AND CENTERLINE DIMENSIONS AND HORIZONTAL CONTROL.
  - 3) ALL ELEVATIONS ARE FL UNLESS OTHERWISE NOTED. TC INDICATES BACK OF WALK FOR COMBINATION CURB, GUTTER, AND WALK, OR TOP OF CURB FOR CURB AND GUTTER.
  - 4) REFER TO STONEGATE VILLAGE METRO DISTRICT APPROVED WATER AND SANITARY SEWER CONSTRUCTION PLANS FOR ALL PROPOSED WATER AND SANITARY SEWER LOCATIONS.
  - 5) TFI INDICATES TOP FRONT OF INLET ELEVATION. TFI ELEVATIONS SHOWN ON INLETS IN PLAN VIEW ARE AT FRONT CORNERS OF INLET. REFER TO SPECIFIC INLET DETAILS ON STORM SEWER PLAN AND PROFILE.
  - 3) REFER TO SHEET 28-30 FOR STREET AND CURB DETAILS. REFER TO SHEET 31-33 FOR STORM SEWER DETAILS.



PROFILE: BELFORD AVENUE

**TOWN OF PARKER APPROVALS**

THE TOWN OF PARKER REVIEW CONSTITUTES GENERAL COMPLIANCE WITH THE TOWN'S STANDARDS AND APPROVED VARIANCES, SUBJECT TO THESE PLANS BEING STAMPED, SIGNED, AND DATED BY THE PROFESSIONAL ENGINEER OF RECORD. REVIEW BY THE TOWN DOES NOT CONSTITUTE APPROVAL OF THE PLAN DESIGN OR ACCURACY AND CORRECTNESS OF ENGINEERING CALCULATIONS. ERRORS IN THE DESIGN OR CALCULATIONS REMAIN THE RESPONSIBILITY OF THE REGISTERED PROFESSIONAL ENGINEER WHOSE STAMP AND SIGNATURE ARE AFFIXED TO THIS DOCUMENT.

THIS REVIEW DOES NOT CONSTITUTE APPROVAL OF ANY PRIVATE ON-SITE IMPROVEMENTS WHICH MAY BE SHOWN. CONSTRUCTION CANNOT COMMENCE UNTIL ALL REQUIRED DRAINAGE/TRAFFIC REPORT(S), FINAL DEVELOPMENT PLAN(S), SPECIAL REVIEW(S), GRADING PERMIT, AND/OR OTHER PERMITS ARE COMPLETE, APPROVED AND ON FILE WITH THE TOWN OF PARKER.

TOWN OF PARKER, DIRECTOR OF ENGINEERING \_\_\_\_\_ DATE \_\_\_\_\_

**Manhard CONSULTING LTD.**  
 7600 East Orchard Road, Suite 100, Greenwood Village, CO 80111, Phone: 303.788.0500  
 Civil Engineering | Surveying | Geospatial Services | Construction Management  
 Water Resource Management

DATE	REVISIONS
12-16-2021	ADD BRIDGE DEPARTURE GUARDRAIL
10-14-2021	APPROVED PLANS
08-31-2021	THIRD SUBMITTAL - RESPOND TO TOP COMMENTS
06-18-2021	SECOND SUBMITTAL - RESPOND TO TOP COMMENTS

**TOWN OF PARKER, COLORADO**  
**BELFORD AVENUE - PLAN & PROFILE**

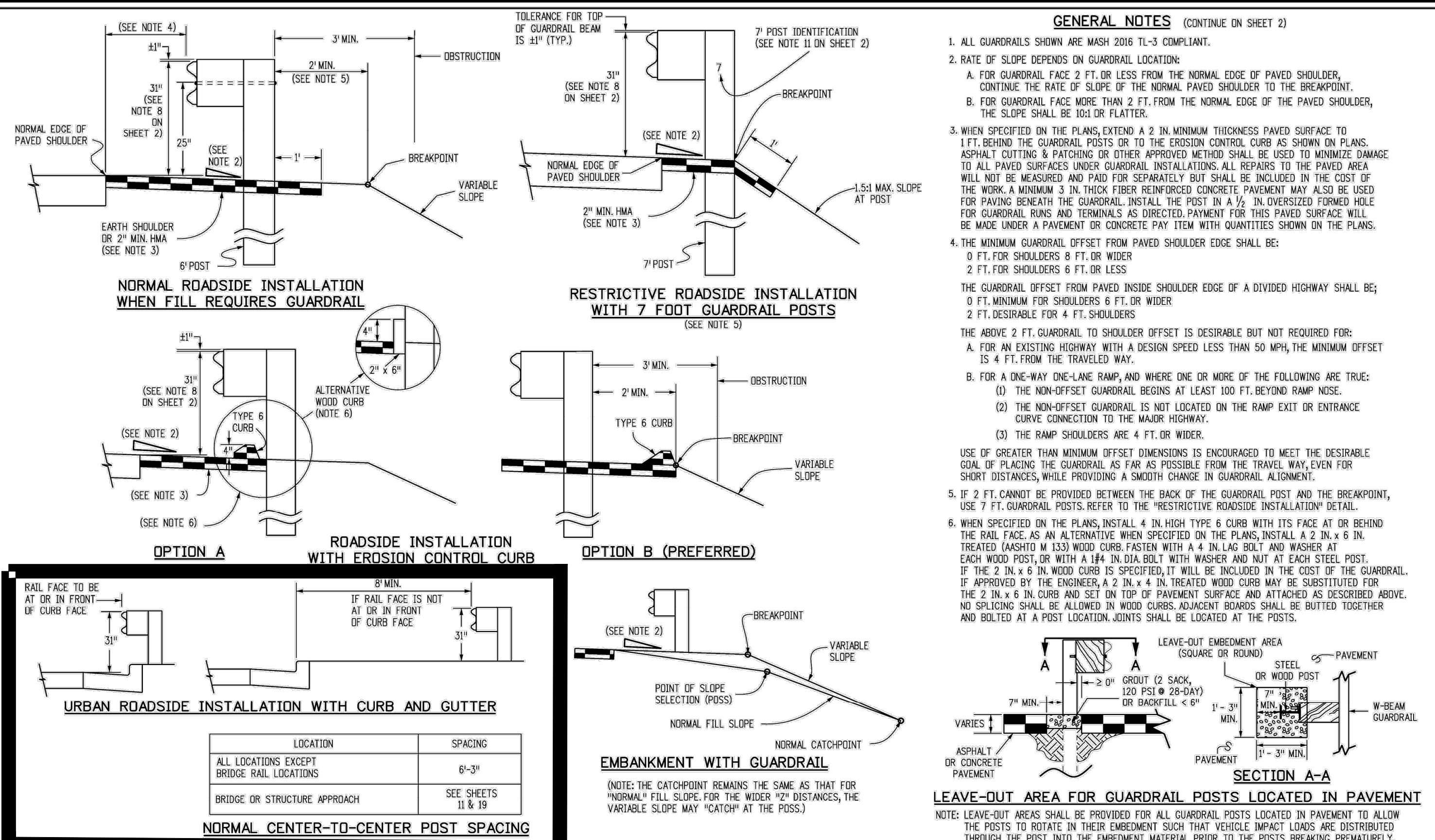
COMPARK VILLAGE SOUTH, F1 - BELFORD AVE SITE PLAN AMD

PROFESSIONAL ENGINEER  
 37642  
 12-16-2021

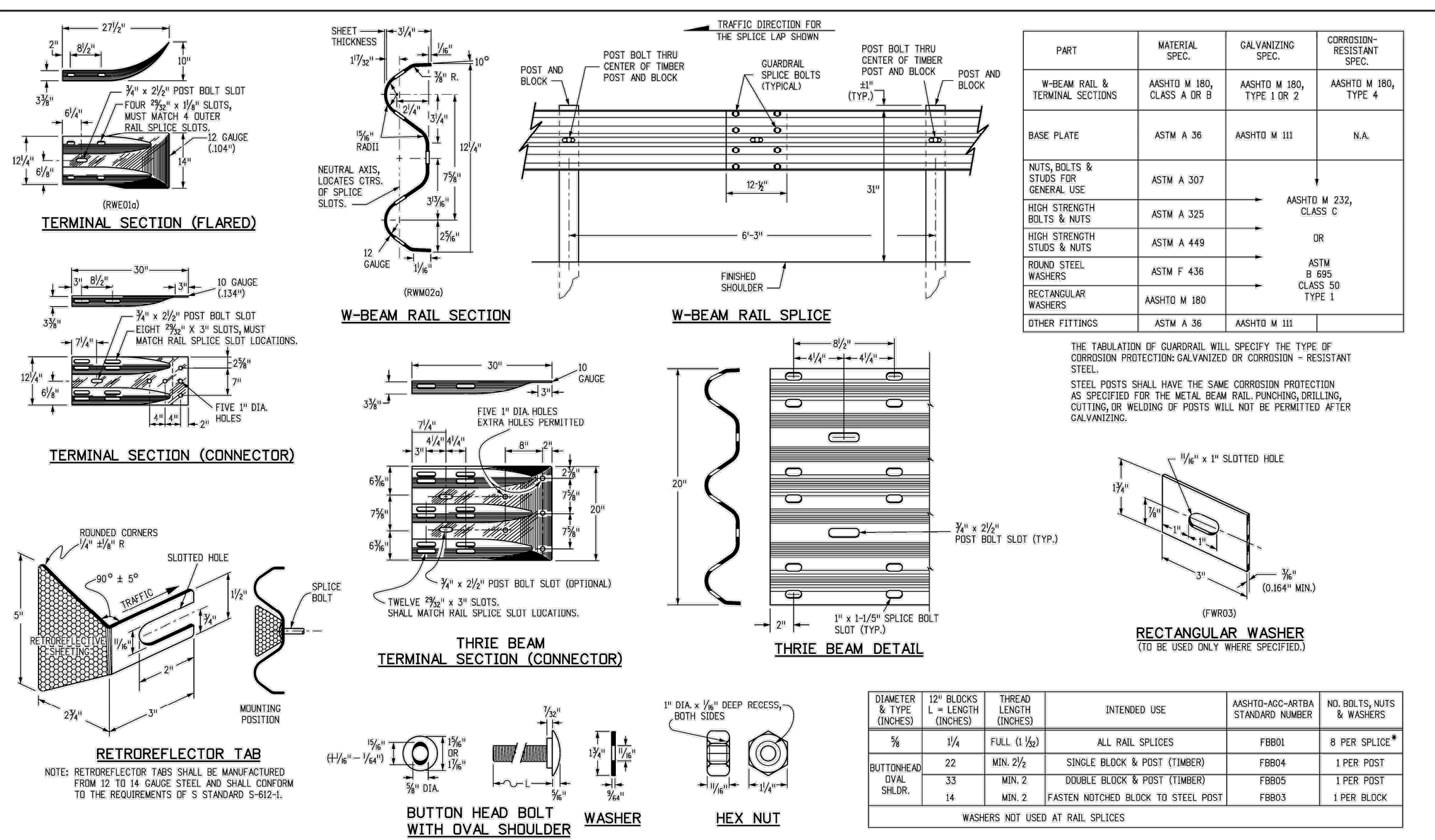
PROJ. MGR.: GTT  
 PROJ. ASSOC.: ASD  
 DRAWN BY: JMP  
 DATE: 03/15/2021

SHEET  
**7 OF 35**  
 CLCPK3

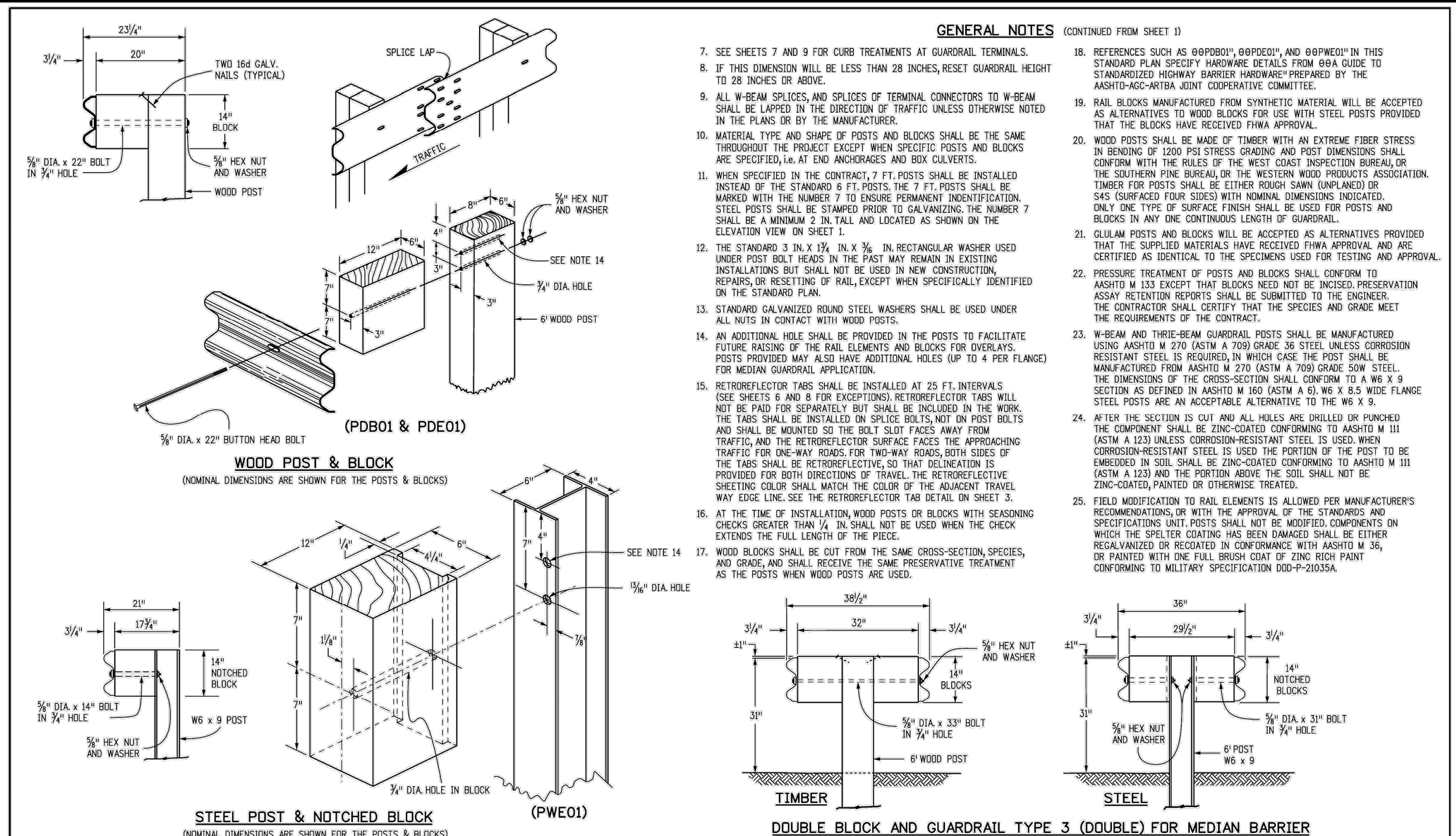
Plotted: 1/20/2022 2:25 PM. Draw Name: P:\Clcpc3\CompSouth09 - Belford Ave East\Draw\Enk\Final Drawings\Plan Set\VP - BELFORD AVE.dwg. Updated By: ADrucker



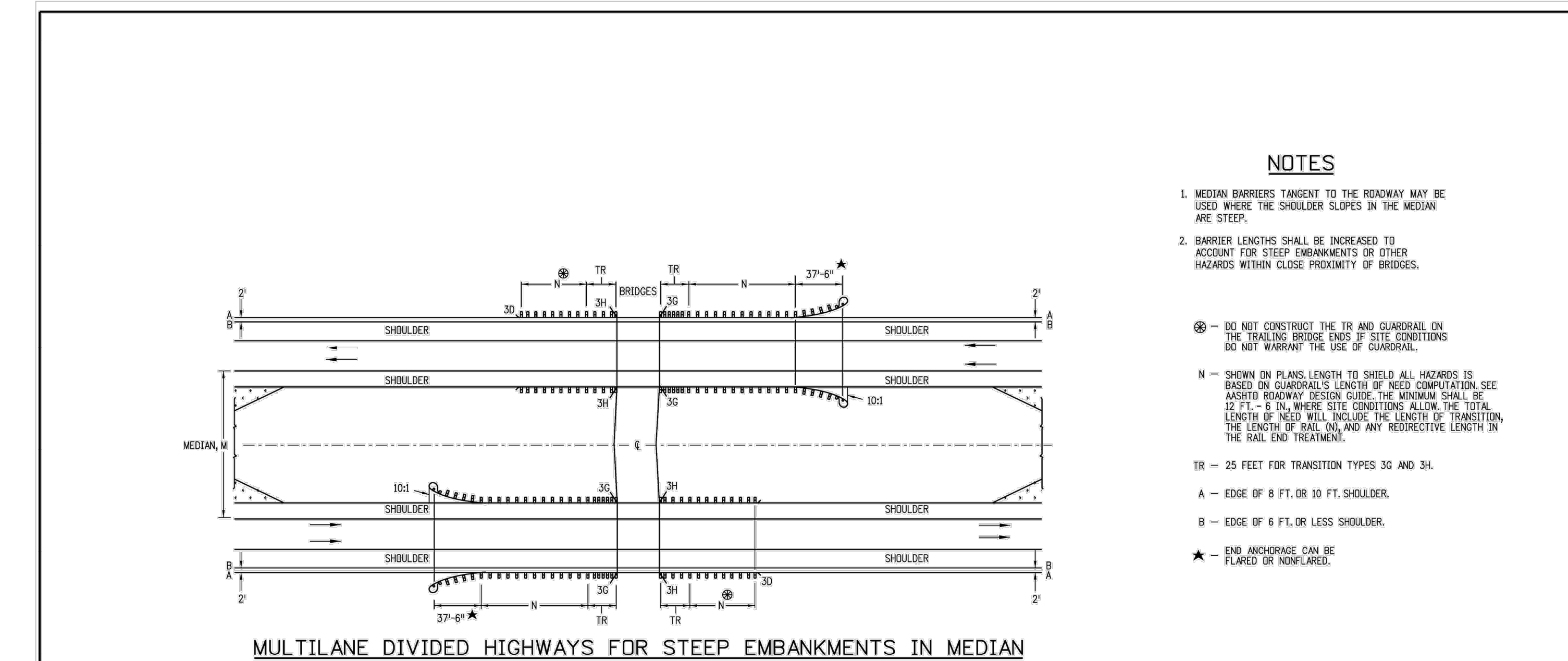
<b>Computer File Information</b>		<b>Sheet Revisions</b>		<b>Colorado Department of Transportation</b>		<b>MIDWEST GUARDRAIL SYSTEM (MGS) TYPE 3 W-BEAM 31 INCHES</b>		<b>STANDARD PLAN NO. M-606-1</b>	
Creation Date: 07/31/19	Date: 03/05/20	Revised	Comments	2829 West Howard Place	Denver, CO 80204	303-757-9021	FAX: 303-757-9868	Project Development Branch	JBK
Designer Initials: JBK	Checked: [initials]	Approved: [initials]	Comments	Issued by the Project Development Branch: July 31, 2019					
Last Modification Date: 03/05/20	Checked: [initials]	Approved: [initials]	Comments	Project Sheet No. 1 of 19					
Detailer Initials: LTA	Checked: [initials]	Approved: [initials]	Comments	Project Sheet Number:					
CAD Ver: MicroStation V8	Scale: Not to Scale	Units: English	Comments						



<b>Computer File Information</b>		<b>Sheet Revisions</b>		<b>Colorado Department of Transportation</b>		<b>MIDWEST GUARDRAIL SYSTEM (MGS) TYPE 3 W-BEAM 31 INCHES</b>		<b>STANDARD PLAN NO. M-606-1</b>	
Creation Date: 07/31/19	Date: 03/05/20	Revised	Comments	2829 West Howard Place	Denver, CO 80204	303-757-9021	FAX: 303-757-9868	Project Development Branch	JBK
Designer Initials: JBK	Checked: [initials]	Approved: [initials]	Comments	Issued by the Project Development Branch: July 31, 2019					
Last Modification Date: 03/05/20	Checked: [initials]	Approved: [initials]	Comments	Project Sheet No. 3 of 19					
Detailer Initials: LTA	Checked: [initials]	Approved: [initials]	Comments	Project Sheet Number:					
CAD Ver: MicroStation V8	Scale: Not to Scale	Units: English	Comments						



<b>Computer File Information</b>		<b>Sheet Revisions</b>		<b>Colorado Department of Transportation</b>		<b>MIDWEST GUARDRAIL SYSTEM (MGS) TYPE 3 W-BEAM 31 INCHES</b>		<b>STANDARD PLAN NO. M-606-1</b>	
Creation Date: 07/31/19	Date: 03/05/20	Revised	Comments	2829 West Howard Place	Denver, CO 80204	303-757-9021	FAX: 303-757-9868	Project Development Branch	JBK
Designer Initials: JBK	Checked: [initials]	Approved: [initials]	Comments	Issued by the Project Development Branch: July 31, 2019					
Last Modification Date: 03/05/20	Checked: [initials]	Approved: [initials]	Comments	Project Sheet No. 2 of 19					
Detailer Initials: LTA	Checked: [initials]	Approved: [initials]	Comments	Project Sheet Number:					
CAD Ver: MicroStation V8	Scale: Not to Scale	Units: English	Comments						



<b>Computer File Information</b>		<b>Sheet Revisions</b>		<b>Colorado Department of Transportation</b>		<b>MIDWEST GUARDRAIL SYSTEM (MGS) TYPE 3 W-BEAM 31 INCHES</b>		<b>STANDARD PLAN NO. M-606-1</b>	
Creation Date: 07/31/19	Date: 03/05/20	Revised	Comments	2829 West Howard Place	Denver, CO 80204	303-757-9021	FAX: 303-757-9868	Project Development Branch	JBK
Designer Initials: JBK	Checked: [initials]	Approved: [initials]	Comments	Issued by the Project Development Branch: July 31, 2019					
Last Modification Date: 03/05/20	Checked: [initials]	Approved: [initials]	Comments	Project Sheet No. 14 of 19					
Detailer Initials: LTA	Checked: [initials]	Approved: [initials]	Comments	Project Sheet Number:					
CAD Ver: MicroStation V8	Scale: Not to Scale	Units: English	Comments						

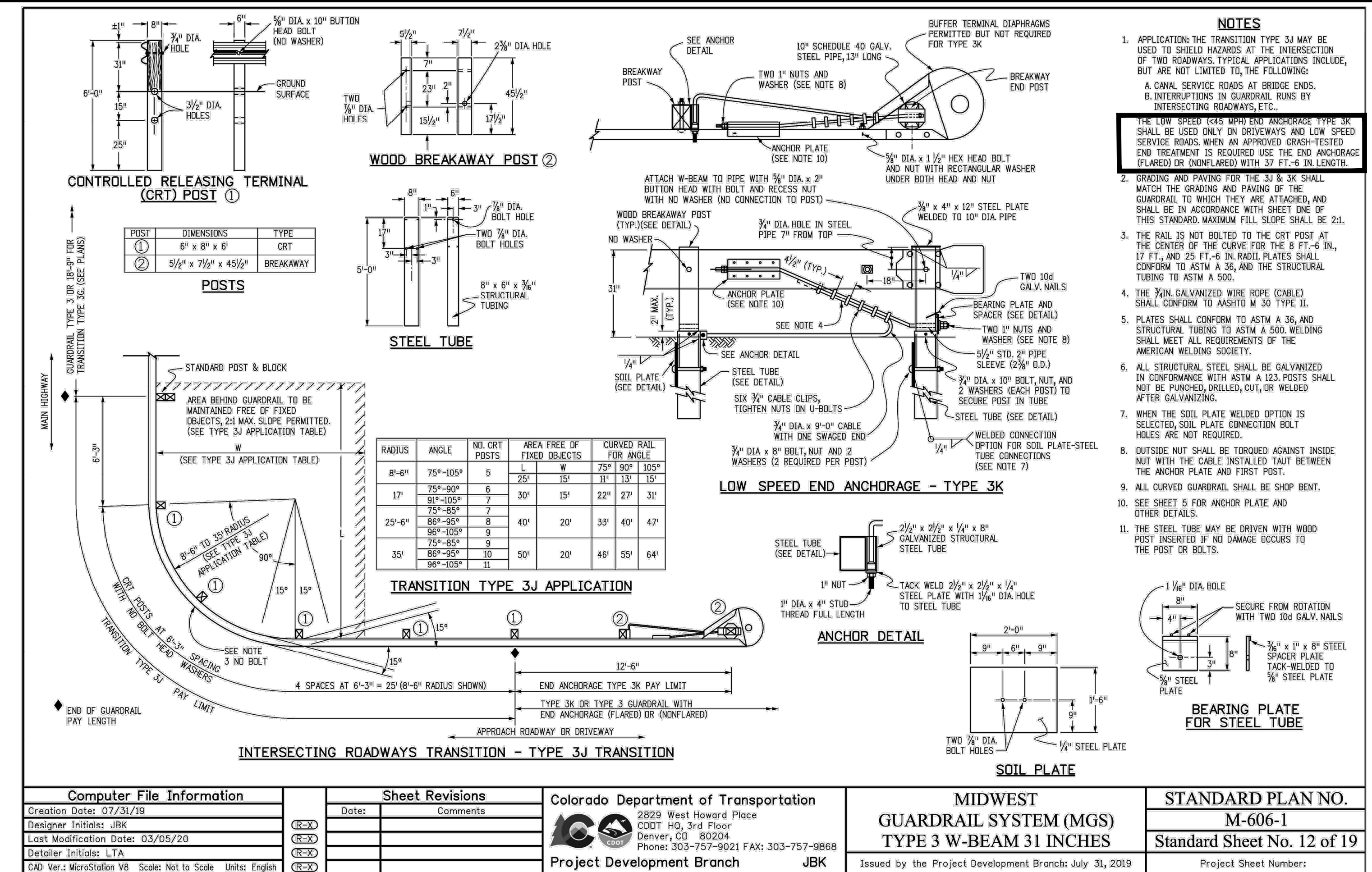
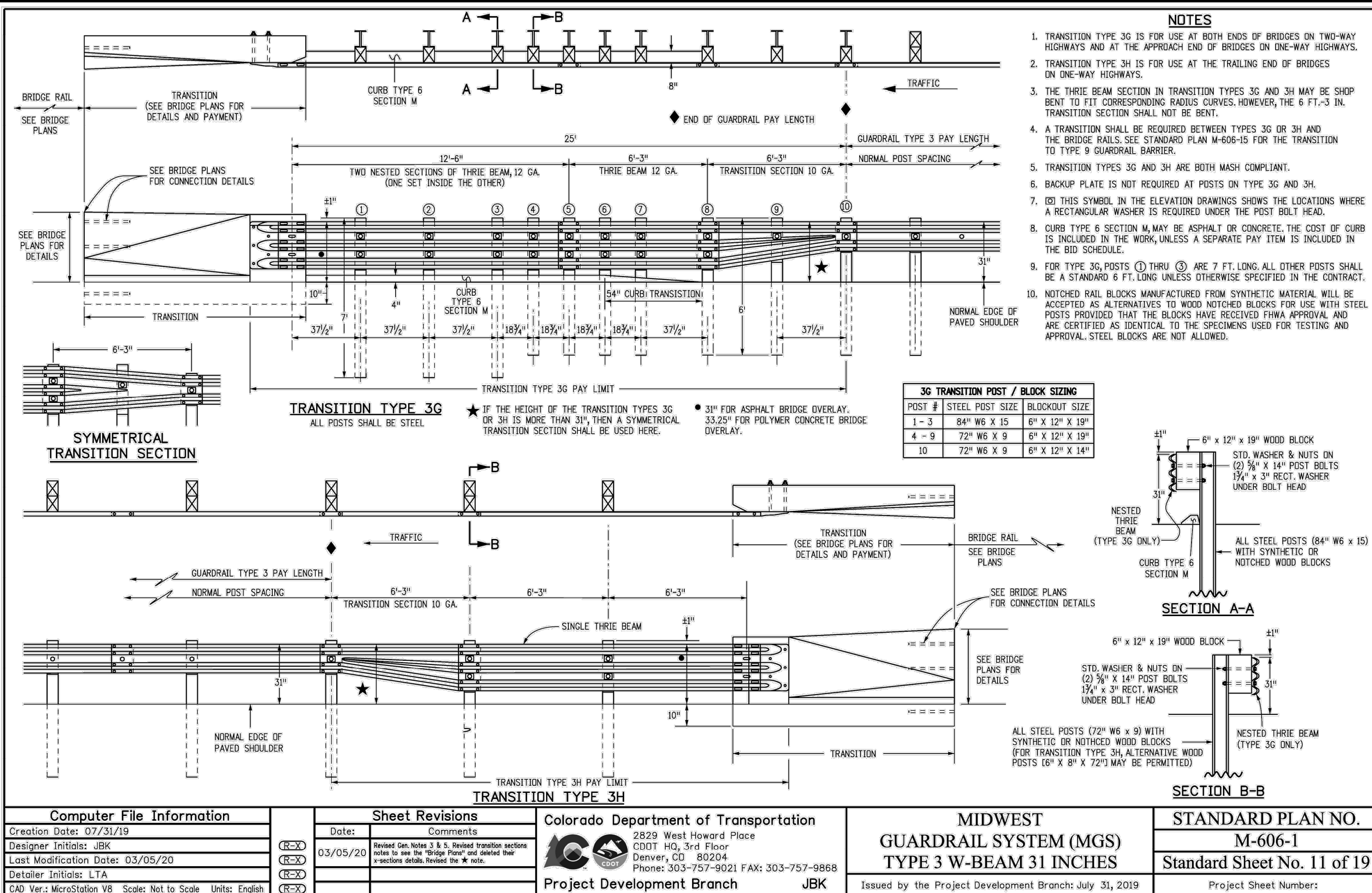
17/07/2022 2:25 PM - Draw Name: P:\CLCPK3\CompSour99 - Belford Ave. Each\Draw\Enk\Final Drawings\Plan Set\Guardrail\Details.dwg - Updated By: ADrucker

**Manhard CONSULTING LTD.**  
 7600 East Orchard Road, Suite 100-30, Greenwood Village, CO 80120, Phone: 303.778.0500, manhard.com  
 Civil Engineering | Surveying & Geospatial Services | Construction Management | Water Resource Management

**COMPARK VILLAGE SOUTH, F1 - BELFORD AVE SITE PLAN AMD**  
**TOWN OF PARKER, COLORADO**  
**GUARDRAIL DETAILS**

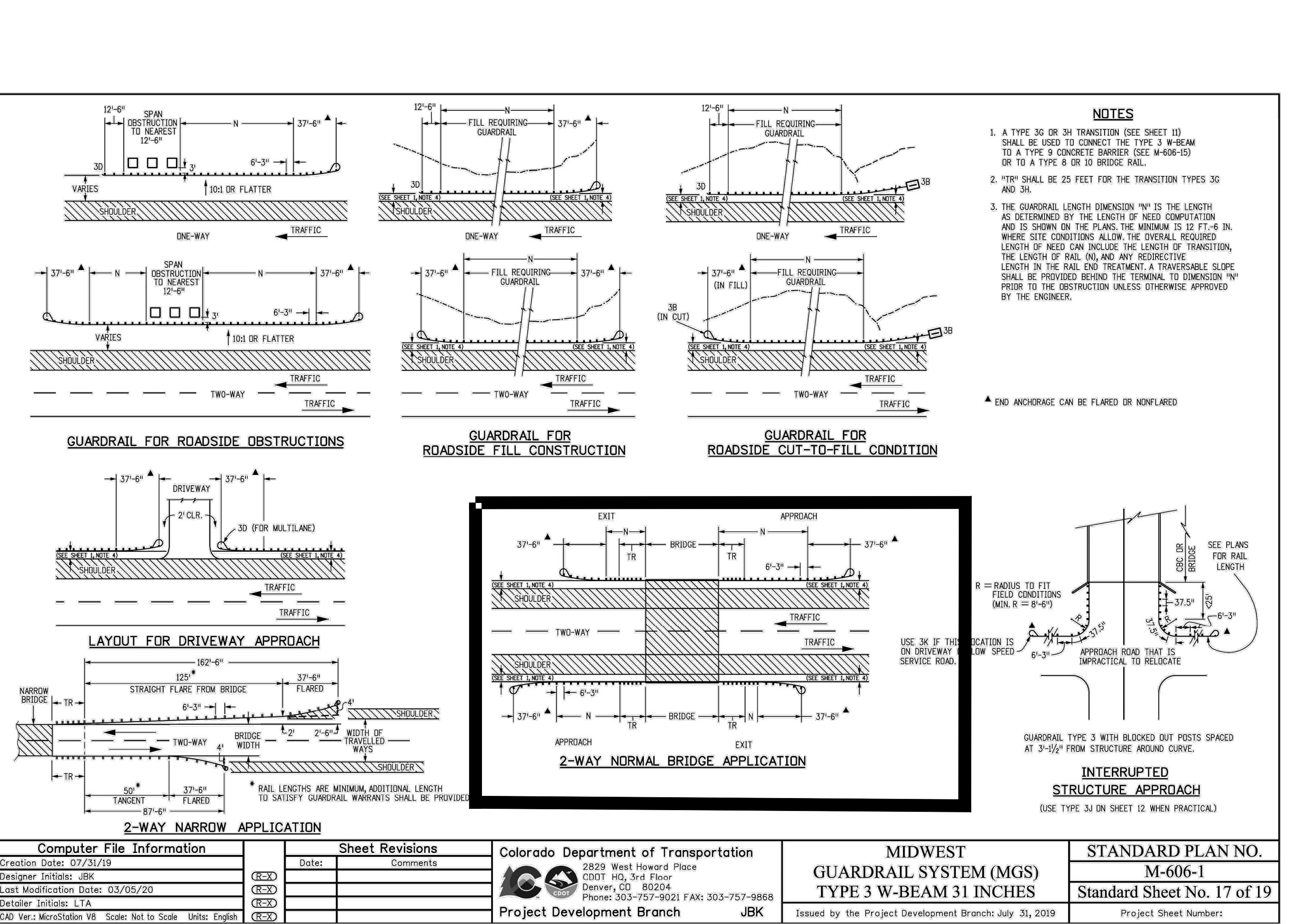
PROJ. MGR.: GTT  
 PROJ. ASSOC.: ASD  
 DRAWN BY: JMP  
 DATE: 03/15/2021

**34 of 35**  
 CLCPK3 CLCPK3



<b>Computer File Information</b> Creation Date: 07/31/19 Designer Initials: JBK Last Modification Date: 03/05/20 Detailer Initials: LTA CAD Ver: MicroStation V8 Scale: Not to Scale Units: English	<b>Sheet Revisions</b> Date: 03/05/20 Comments: Revised transition section notes to see the "bridge frame" and correct the connection details between the notes.	<b>Colorado Department of Transportation</b> 2829 West Howard Place CODOT HQ, 3rd Floor Denver, CO 80204 Phone: 303-757-9021 FAX: 303-757-9858 Project Development Branch JBK	<b>MIDWEST GUARDRAIL SYSTEM (MGS) TYPE 3 W-BEAM 31 INCHES</b> Issued by the Project Development Branch July 31, 2019	<b>STANDARD PLAN NO. M-606-1</b> Standard Sheet No. 11 of 19 Project Sheet Number:
--	--	--	---	--

<b>Computer File Information</b> Creation Date: 07/31/19 Designer Initials: JBK Last Modification Date: 03/05/20 Detailer Initials: LTA CAD Ver: MicroStation V8 Scale: Not to Scale Units: English	<b>Sheet Revisions</b> Date: 03/05/20 Comments: Revised transition section notes to see the "bridge frame" and correct the connection details between the notes.	<b>Colorado Department of Transportation</b> 2829 West Howard Place CODOT HQ, 3rd Floor Denver, CO 80204 Phone: 303-757-9021 FAX: 303-757-9858 Project Development Branch JBK	<b>MIDWEST GUARDRAIL SYSTEM (MGS) TYPE 3 W-BEAM 31 INCHES</b> Issued by the Project Development Branch July 31, 2019	<b>STANDARD PLAN NO. M-606-1</b> Standard Sheet No. 12 of 19 Project Sheet Number:
--	--	--	---	--



<b>Computer File Information</b> Creation Date: 07/31/19 Designer Initials: JBK Last Modification Date: 03/05/20 Detailer Initials: LTA CAD Ver: MicroStation V8 Scale: Not to Scale Units: English	<b>Sheet Revisions</b> Date: 03/05/20 Comments: Revised transition section notes to see the "bridge frame" and correct the connection details between the notes.	<b>Colorado Department of Transportation</b> 2829 West Howard Place CODOT HQ, 3rd Floor Denver, CO 80204 Phone: 303-757-9021 FAX: 303-757-9858 Project Development Branch JBK	<b>MIDWEST GUARDRAIL SYSTEM (MGS) TYPE 3 W-BEAM 31 INCHES</b> Issued by the Project Development Branch July 31, 2019	<b>STANDARD PLAN NO. M-606-1</b> Standard Sheet No. 17 of 19 Project Sheet Number:
--	--	--	---	--

<b>Computer File Information</b> Creation Date: 07/31/19 Designer Initials: JBK Last Modification Date: 03/05/20 Detailer Initials: LTA CAD Ver: MicroStation V8 Scale: Not to Scale Units: English	<b>Sheet Revisions</b> Date: 03/05/20 Comments: Revised transition section notes to see the "bridge frame" and correct the connection details between the notes.	<b>Colorado Department of Transportation</b> 2829 West Howard Place CODOT HQ, 3rd Floor Denver, CO 80204 Phone: 303-757-9021 FAX: 303-757-9858 Project Development Branch JBK	<b>MIDWEST GUARDRAIL SYSTEM (MGS) TYPE 3 W-BEAM 31 INCHES</b> Issued by the Project Development Branch July 31, 2019	<b>STANDARD PLAN NO. M-606-1</b> Standard Sheet No. 17 of 19 Project Sheet Number:
--	--	--	---	--

**Manhard CONSULTING LTD.**  
7600 East Orchard Road, Suite 100-303, Greenwood Village, CO 80120, phone: 303.770.0500, manhard.com  
Civil Engineering | Surveying & Geospatial Services | Construction Management | Water Resource Management

**COMPARK VILLAGE SOUTH, F1 - BELFORD AVE SITE PLAN AMD**  
TOWN OF PARKER, COLORADO  
GUARDRAIL DETAILS

PROJ. MGR.: GTT  
PROJ. ASSOC.: ASD  
DRAWN BY: JMP  
DATE: 03/15/2021

**37642**  
12-16-2021  
PROFESSIONAL ENGINEER

**35** OF **35**  
CLCPK3 CLCPK3