

#	DESCRIPTION	DATE
0	INITIAL SUBMITTAL TO TOWN	8/8/18
1	REVISED SUBMITTAL TO TOWN	11/26/18
2	THIRD SUBMITTAL TO TOWN	7/31/19
3	FOURTH SUBMITTAL TO TOWN	9/13/19
4	FIFTH SUBMITTAL TO TOWN	10/30/19
5	SIXTH SUBMITTAL TO TOWN	6/15/20
6	SEVENTH SUBMITTAL TO TOWN	9/9/20
7	EIGHTH SUBMITTAL TO TOWN	10/7/20
8	NINTH SUBMITTAL TO TOWN	12/11/20
9	TENTH SUBMITTAL TO TOWN	1/8/21
10	ELEVENTH SUBMITTAL TO TOWN	4/12/21



19 SOUTH TEJON ST., SUITE 300
 COLORADO SPRINGS, CO. 80903
 TELE: 719-471-7566
 FAX: 719-471-1174
 www.rtaarchitects.com

PROJECT

**Parker Adventist
 Hospital MOB III**

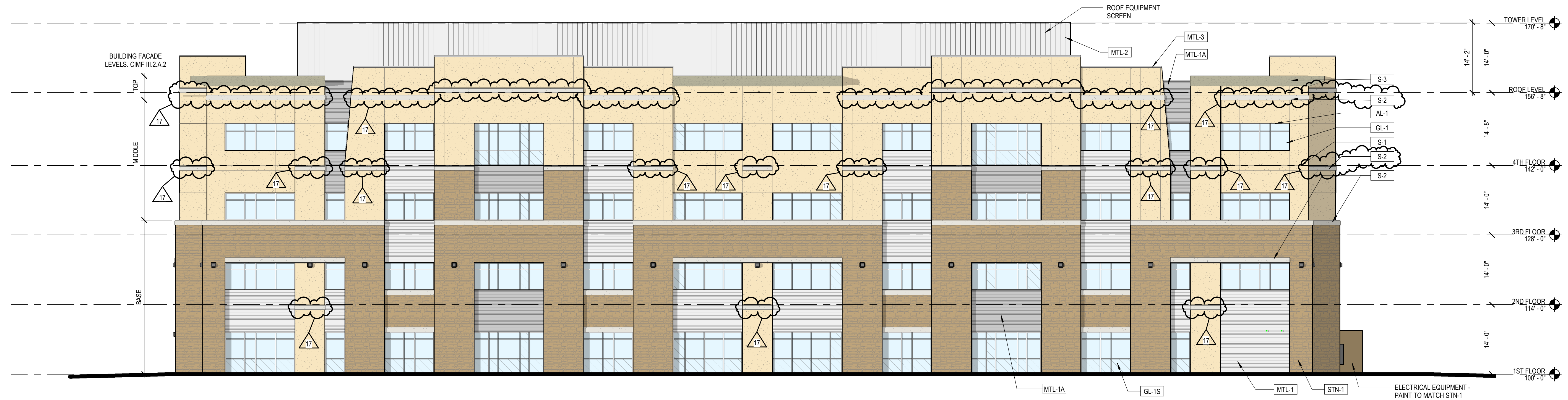
9403 CROWN CREST BLVD.
 PARKER, COLORADO
 80138

**SITE PLAN
 AMENDMENT**

SHEET TITLE

**BUILDING
 ELEVATIONS**

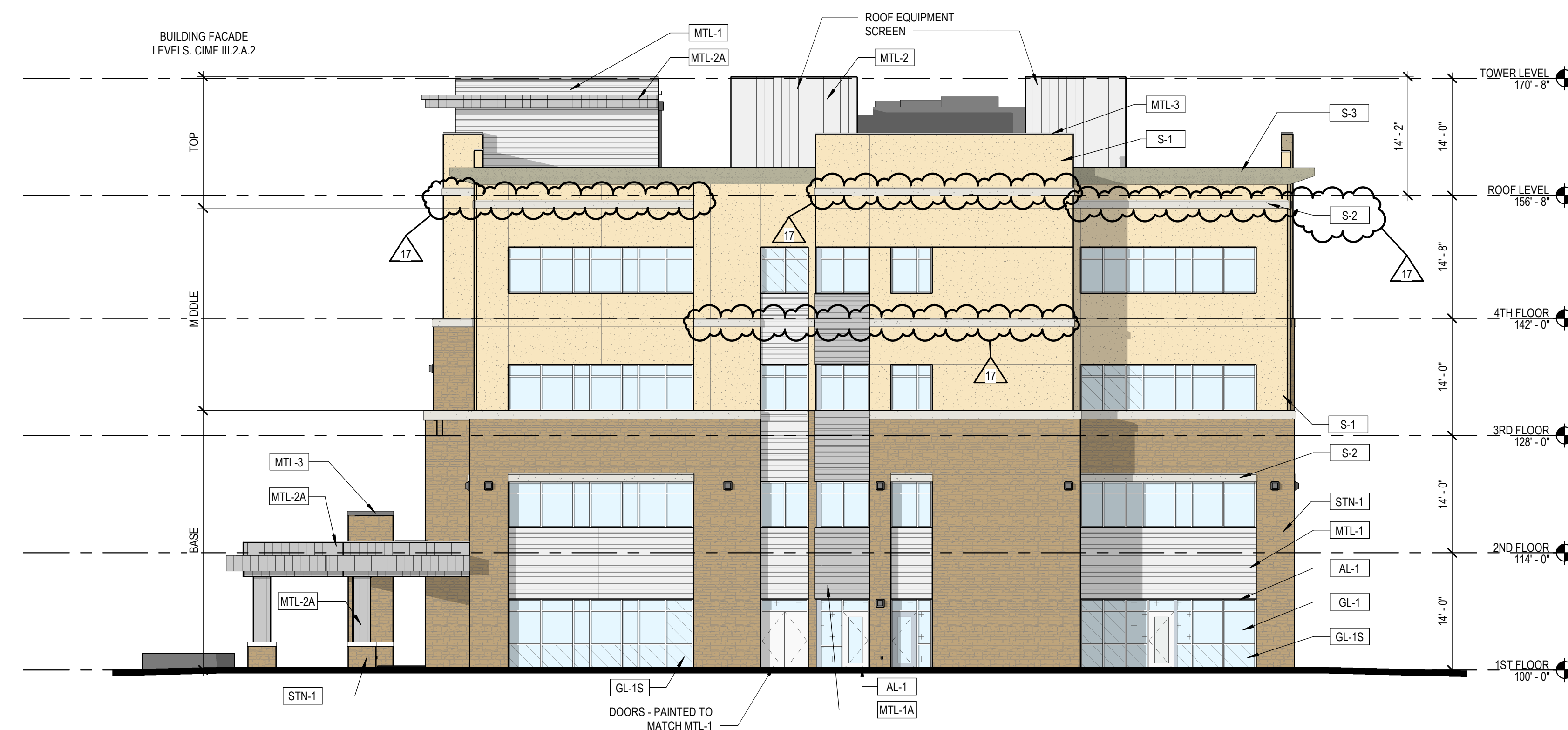
SHEET NUMBER



2 NORTH ELEVATION
 SP-3 3/32" = 1'-0"

EXTERIOR ELEVATION LEGEND

	S-1 STUCCO LARIAT POREX		GL-1 INSULATED VISION GLASS SOLARBAN 80 OPTIBLUE PPG
	S-2 STUCCO SNOWBALL POREX		GL-1S INSULATED SPANDELL GLASS AG 43 GRAY (INBOARD) GUARDIAN SUNGUARD
	S-3 STUCCO BASALT POREX		AL-1 ALUMINUM STOREFRONT CLEAR ANODIZED KAWNEER
	STN-1 STONE CHERRY CREEK LEDGE SUNSET STONE		
	MTL-1 METAL PANEL HS-8 PANEL - CITYSCAPE BERRIDGE		
	MTL-1A METAL PANEL HS-8 PANEL - ZINC GREY BERRIDGE		
	MTL-2 METAL PANEL FW-12 PANEL - CITYSCAPE BERRIDGE		
	MTL-2A METAL PANEL FW-12 - CITYSCAPE BERRIDGE		
	MTL-3 METAL COPING ZINC GREY BERRIDGE		



1 EAST ELEVATION
 SP-3 3/32" = 1'-0"

#	DESCRIPTION	DATE
0	INITIAL SUBMITTAL TO TOWN	8/8/18
1	REVISED SUBMITTAL TO TOWN	11/26/18
2	THIRD SUBMITTAL TO TOWN	7/31/19
3	FOURTH SUBMITTAL TO TOWN	9/13/19
4	FIFTH SUBMITTAL TO TOWN	10/30/19
5	SIXTH SUBMITTAL TO TOWN	6/15/20
6	SEVENTH SUBMITTAL TO TOWN	9/9/20
7	EIGHTH SUBMITTAL TO TOWN	10/7/20
8	NINTH SUBMITTAL TO TOWN	12/11/20
9	TENTH SUBMITTAL TO TOWN	1/8/21
10	ELEVENTH SUBMITTAL TO TOWN	4/12/21



19 SOUTH TEJON ST., SUITE 300
 COLORADO SPRINGS, CO. 80903
 TELE: 719-471-7566
 FAX: 719-471-1174
 www.rtaarchitects.com

PROJECT

**Parker Adventist
 Hospital MOB III**

9403 CROWN CREST BLVD.
 PARKER, COLORADO
 80138

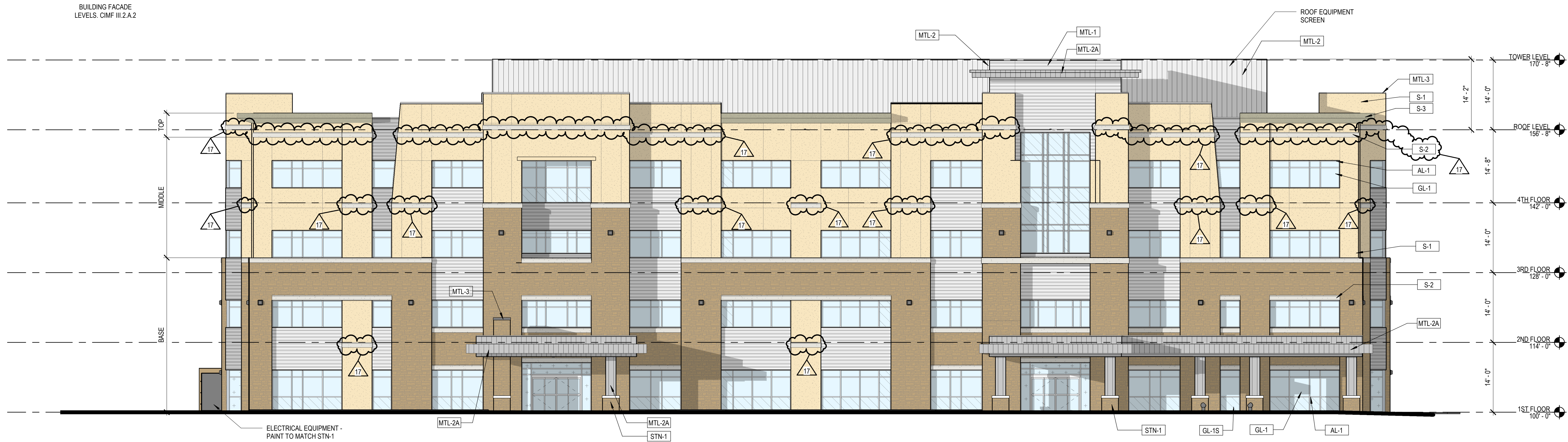
**SITE PLAN
 AMENDMENT**

SHEET TITLE

**BUILDING
 ELEVATIONS**

SHEET NUMBER

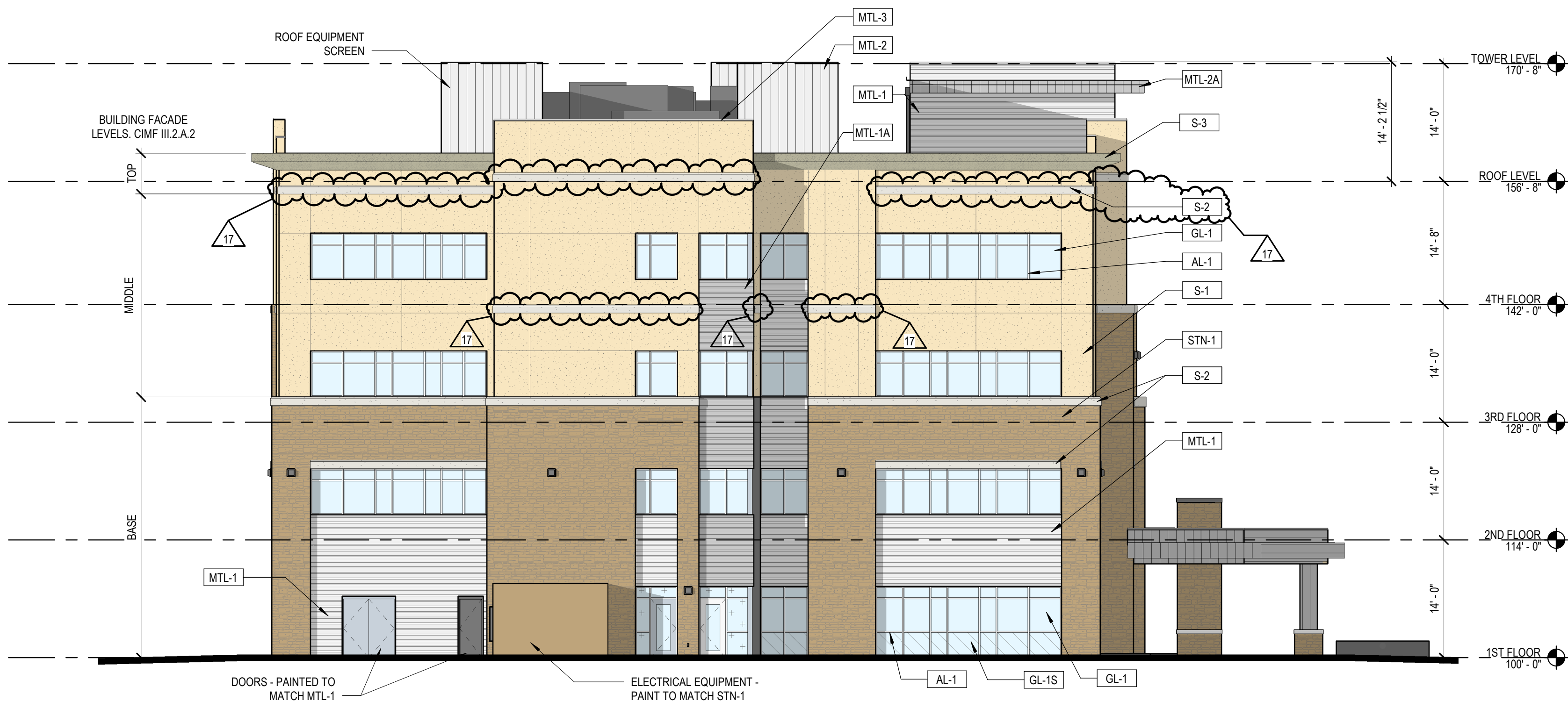
BUILDING FACADE
 LEVELS, CIMF III.2.A.2



2 SOUTH ELEVATION
 SP-4 3/32" = 1'-0"

EXTERIOR ELEVATION LEGEND

	S-1 STUCCO LARIAT POREX		GL-1 INSULATED VISION GLASS SOLARBAN 80 OPTIBLUE PPG
	S-2 STUCCO SNOWBALL POREX		GL-1S INSULATED SPANDEL GLASS AG 43 GRAY (INBOARD) GUARDIAN SUNGUARD
	S-3 STUCCO BASALT POREX		AL-1 ALUMINUM STOREFRONT CLEAR ANODIZED KAWNEER
	STN-1 STONE CHERRY CREEK LEDGE SUNSET STONE		
	MTL-1 METAL PANEL HS-8 PANEL - CITYSCAPE BERRIDGE		
	MTL-1A METAL PANEL HS-8 PANEL - ZINC GREY BERRIDGE		
	MTL-2 METAL PANEL FW-12 PANEL - CITYSCAPE BERRIDGE		
	MTL-2A METAL PANEL FW-12 - CITYSCAPE BERRIDGE		
	MTL-3 METAL COPING ZINC GREY BERRIDGE		



1 WEST ELEVATION
 SP-4 3/32" = 1'-0"



2
SP6 VIEW FROM NORTHWEST



1
SP6 VIEW FROM SOUTHEAST

PARKER PROJECT NUMBER

SP18-081

DATE

7/31/2019

REVISIONS

#	DESCRIPTION	DATE
0	INITIAL SUBMITTAL TO TOWN	8/8/18
1	REVISED SUBMITTAL TO TOWN	11/26/18
2	THIRD SUBMITTAL TO TOWN	7/31/19
3	FOURTH SUBMITTAL TO TOWN	9/13/19
4	FIFTH SUBMITTAL TO TOWN	10/30/19
5	SIXTH SUBMITTAL TO TOWN	6/15/20
6	SEVENTH SUBMITTAL TO TOWN	9/9/20
7	EIGHTH SUBMITTAL TO TOWN	10/7/20
8	NINTH SUBMITTAL TO TOWN	12/11/20
9	TENTH SUBMITTAL TO TOWN	1/8/21
10	ELEVENTH SUBMITTAL TO TOWN	4/12/21



19 SOUTH TEJON ST., SUITE 300
 COLORADO SPRINGS, CO. 80903
 TELE: 719-471-7566
 FAX: 719-471-1174
 www.rtaarchitects.com

PROJECT

**Parker Adventist
 Hospital MOB III**

9403 CROWN CREST BLVD.
 PARKER, COLORADO
 80138

**SITE PLAN
 AMENDMENT**

SHEET TITLE

**BUILDING
 RENDERINGS**

SHEET NUMBER

10 OF 12