

UTILITY PLANS

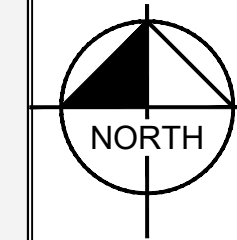
MCDONALD'S CHAMBERS

DOUGLAS 234, FILING NO. 6, BLOCK 1, LOT 3
NEC CHAMBERS ROAD AND HESS ROAD
PARKER, CO

SHEET INDEX	
SHEET NUMBER	SHEET TITLE
PWSD	
C2.0	COVER SHEET
C2.1	NOTES
C2.2	UTILITY PLAN
C2.3	PWSD DETAILS
C2.4	PWSD DETAILS



VICINITY MAP



PROJECT CONTACTS:

DEVELOPER:
MCDONALD'S USA, LLC
4643 S. ULSTER STREET, SUITE 1300
DENVER, CO 80237
TEL: (303) 519-4001
CONTACT: KORTNEY PEDIGO

ARCHITECT:
CORESTATES GROUP
135 WATER STREET, SUITE 201
NAPERVILLE, IL 60540
TEL: (224) 585-4582
CONTACT: KELLY TESKA

ENGINEER:
KIMLEY-HORN AND ASSOCIATES, INC.
2 NEVADA NORTH AVE., SUITE 300
COLORADO SPRINGS, CO 80903
TEL: (719) 453-0180
CONTACT: JESSICA MCCALLUM, P.E.

SURVEYOR:
ENGINEERING SERVICE CO.
14190 EAST EVANS AVENUE
AURORA CO, 80014
TEL: (719) 582-1270
CONTACT: CHIP BECKSTROM, P.L.S.

LANDSCAPE ARCHITECT:
KIMLEY-HORN AND ASSOCIATES, INC.
2 NEVADA NORTH AVE., SUITE 300
COLORADO SPRINGS, CO 80903
TEL: (719) 453-0180
CONTACT: JEREMY POWELL, P.L.A.

MUNICIPAL CONTACT LIST:

TOWN OF PARKER

PLANNING AND INSPECTIONS DEPARTMENT
PLANNING DIVISION
20120 E MAIN STREET
PARKER, CO 80138
TEL: (303) 805-3338
CONTACT: BRIANNA SIMON

PLANNING AND INSPECTIONS DEPARTMENT-INSPECTIONS DIVISION
20120 E MAIN STREET
PARKER, CO 80138
TEL: TBD
CONTACT: TBD

CAPITAL IMPROVEMENT PROJECTS/ENGINEERING DEPARTMENT
20120 E MAIN STREET
PARKER, CO 80138
TEL: (303) 940-9546
CONTACT: TYLER SANDT

TRANSPORTATION DEPARTMENT
COLORADO DEPARTMENT OF TRANSPORTATION
TEL: (303) 757-9356
CONTACT: RICK SOLOMON

CITY FIRE DEPARTMENT
20120 E MAIN STREET
PARKER, CO 80138
TEL: (303) 805-3169
CONTACT: RANDY CAPRA

PARKER WATER AND SANITATION DISTRICT
18100 E WOODMAN DRIVE
PARKER, CO 80134
TEL: (303) 841-4627
CONTACT: DRAYTON SANDERSON

GAS COMPANY
XCEL ENERGY
1800 LARIMER STREET
DENVER, CO 80202
TEL: (800) 895-1999
CONTACT: RON JOHNSON

ELECTRIC COMPANY
IREA
5496 US HWY 85
SEDALIA, CO 80135
TEL: (720) 733-5493
CONTACT: BROOKS KAUFMAN

TELEPHONE COMPANY
CENTURY LINK
1801 CALIFORNIA STREET, SUITE 240
DENVER, CO 80202
TEL: (855) 891-4083
CONTACT: IZZY MILLER

BENCHMARK

BENCHMARK: NGS DESIGNATION C 355 (PID:KK0205); STANDARD NGS BM LOCATED 2 MI SE FROM SEDALIA, 2.0 MILES SOUTHEAST ALONG THE DENVER AND RIO GRANDE WESTERN RAILROAD FROM THE STATION AT SEDALIA, 0.5 MILE NORTHWEST OF MILEPOST 27, 32 FEET NORTH OF THE NORTH RAIL, 53 FEET SOUTH OF THE CENTER LINE OF U.S. HIGHWAY 85, 2 FEET WEST OF A WITNESS POST, SET IN THE TOP OF A CONCRETE POST WHICH PROJECTS 0.4 FOOT ABOVE THE GROUND.

BASIS OF BEARINGS

BEARINGS ARE BASED ON THE SOUTH LINE OF THE SE 1/4 OF SECTION 29, T.6S., R.66W., OF THE 6TH P.M. BEARING S89°35'27"W AND BOUNDED BY A 3 1/4" ALUMINUM CAP AT THE S 1/4 CORNER OF SECTION 29 AND A 3 1/4" ALUMINUM CAP AT THE SE CORNER OF SECTION 29. THE MONUMENTS ARE STAMPED AS SHOWN HEREON.

LEGAL DESCRIPTION

LOT 3, DOUGLAS 234, FILING NO. 6 WITHIN A PORTION OF THE SOUTHEAST 1/4 OF THE SECTION 29, TOWNSHIP 6 SOUTH, RANGE 66 WEST OF THE 6TH P.M. TOWN OF PARKER, COUNTY OF DOUGLAS, STATE OF COLORADO

DISTRICT ACCEPTANCE NOTE

- UPON COMPLETION OF SANITARY AND WATER CONSTRUCTION AND TESTING, THE DEVELOPER OR CONTRACTOR SHALL CONTACT THE DISTRICT FOR PROBATIONARY ACCEPTANCE INSPECTION. A PUNCHLIST WILL BE PROVIDED FOR THE DEVELOPER AND CONTRACTOR UPON COMPLETION OF THE INITIAL WALK-THRU AND PROBATIONARY ACCEPTANCE WILL BE ISSUED FOLLOWING COMPLETION AND ACCEPTANCE OF THE WORK OUTLINED IN THE PUNCHLIST.
- THE CONTRACTOR WILL BE HELD RESPONSIBLE FOR THE PROPER FUNCTIONING OF THE LINES FOR UP TO TWO (2) YEARS FROM THE DATE OF PROBATIONARY ACCEPTANCE OF THE LINES BY THE DISTRICT. ANY MALFUNCTION DURING THIS PERIOD OF GUARANTEE SHALL BE REMEDIED BY THE CONTRACTOR TO THE SATISFACTION OF THE DISTRICT ENGINEER AT NO EXPENSE TO THE DISTRICT.
- THE DATE OF FINAL ACCEPTANCE WILL BE INDICATED IN THE CONDITION OF THE RESPONSIBLE FOR CONTACTING THE DISTRICT FOR FINAL INSPECTION AND FINAL ACCEPTANCE.

MATERIAL LIST

DESCRIPTION	QTY.	UNIT
1.5" TYPE K CU	145	LF
6" PVC	421	LF
1.5" DOMESTIC WATER METER	1	EA
3/4" IRRIGATION WATER METER	1	EA
6" 45° BEND	4	EA
6" 11.25° BEND	1	EA
3/4" CURB STOP	1	EA
1.5" CURB STOP	1	EA
8" GATE VALVE	2	EA
TEE	2	EA
HYDRANT	1	EA
4" PVC	34	LF
CLEANOUT	3	EA
GREASE INTERCEPTOR	1	EA
SAMPLING MANHOLE	1	EA

FIRE CODE REVIEW BLOCK:

ALL FIRE HYDRANTS SHALL BE INSTALLED ACCORDING TO WATER UTILITY STANDARDS. THE NUMBER AND LOCATIONS OF THE FIRE HYDRANTS AS SHOWN ON THE OVERALL UTILITY PLAN ARE CORRECT AS SPECIFIED BY THE TOWN OF PARKER, COMMUNITY DEVELOPMENT DEPARTMENT.

Drayton Sanderson 06/22/2022
FIRE CODE OFFICIAL OR DESIGNATED REPRESENTATIVE DATE

(NOTE - UNDERGROUND FIRE LINE (UFL) SUBMITTAL DOCUMENTS MUST MEET THE REQUIREMENT OF NFPA 24 WHEN SUBMITTING FOR REVIEW.)

THE DISTRICT INSPECTOR MUST BE NOTIFIED AT LEAST 48 HOURS PRIOR TO START OF CONSTRUCTION. CALL PARKER WATER AND SANITATION DISTRICT AT 303-841-4627. THE DISTRICT WILL PROVIDE PERIODIC INSPECTIONS OF THE WORK. 24 HOUR NOTICE TO THE INSPECTOR IS REQUIRED FOR SCHEDULING INSPECTIONS. ANY WORK ACCOMPLISHED WITHOUT THE APPROVAL OF THE INSPECTOR WILL BE SUBJECT TO REJECTION.

REVIEWED FOR CONFORMANCE TO PARKER WATER AND SANITATION DISTRICT STANDARDS:

BY: *Drayton Sanderson* (DISTRICT REPRESENTATIVE)
DATE: Jun 23 2022

APPROVED FOR CONSTRUCTION:
PARKER WATER AND SANITATION DISTRICT

BY: *Rebecca Pedigo* (DISTRICT ENGINEER)
DATE: Jun 23 2022

TITLE	UTILITY PLANS	DRAWN BY JUM	JUM	4/8/22	REVISION #4	DESCRIPTION
	COVER SHEET		JUM	3/9/22	REVISION #3	
			JUM	11/22/21	REVISION #2	
			JUM	9/21/21	REVISION #1	
			REV	DATE	DESCRIPTION	BY

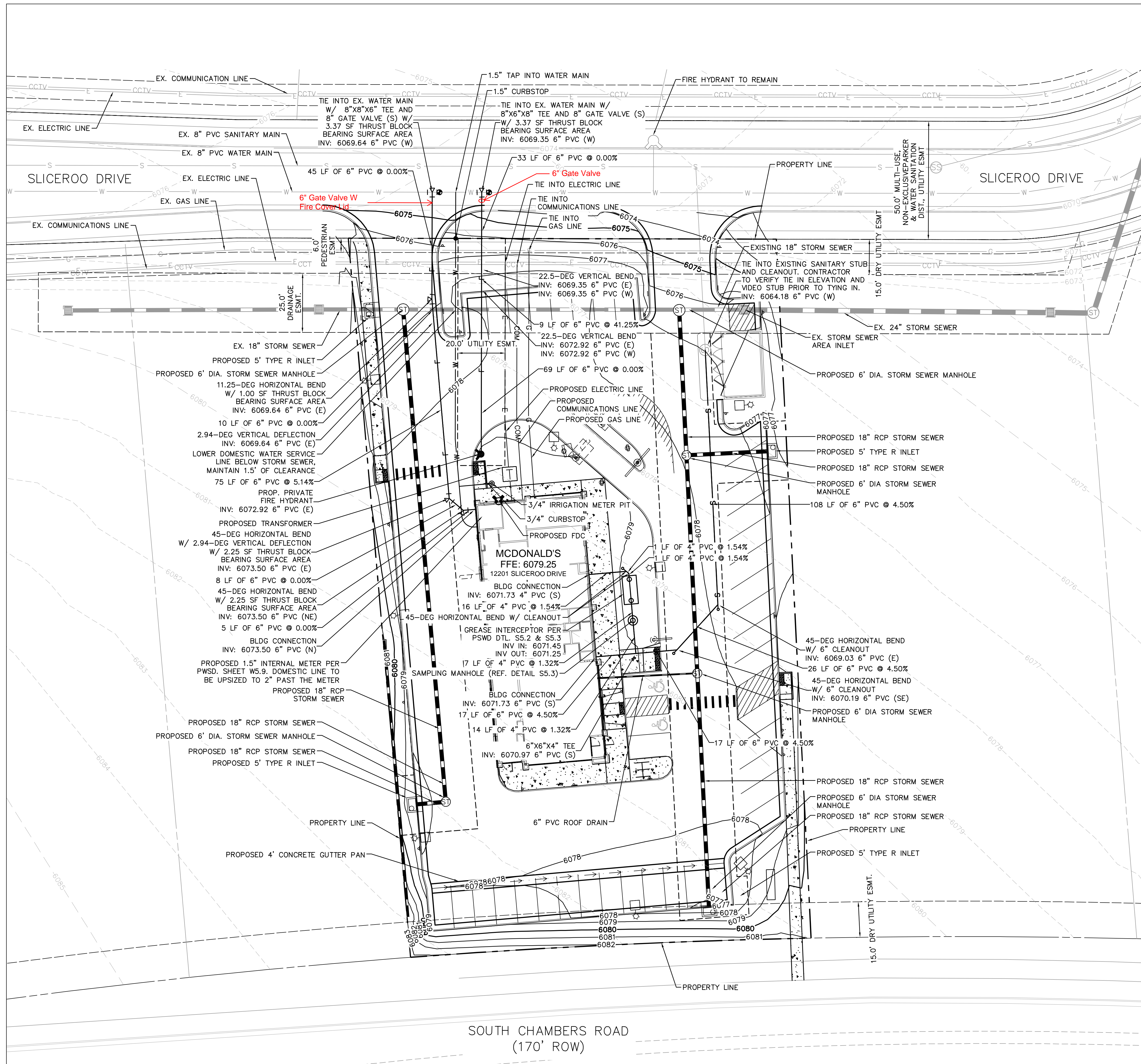
PREPARED BY: **Kimley-Horn**

PROFESSIONAL ENGINEER
JESSICA MCCALLUM
59054
6/21/22

McDonald's USA, LLC
These drawings and specifications are the confidential and proprietary property of McDonald's USA, LLC and shall not be copied or reproduced without written authorization. The contract documents prepared in connection with these drawings are not suitable for use on a different site or at a later time. Use of these drawings for reference or example on another project requires the approval of the engineer of record. Use of the contract documents for reuse on another project is not authorized.

UTILITY PLANS
DESCRIPTION
COVER SHEET
SITE ADDRESS
0050785 LOT 3, DOUGLAS 234 FILING NO. 6





- LEGEND:**
- PROPERTY LINE
 - EASEMENT
 - SCREEN WALL
 - W — EX. WATER LINE
 - S — EX. SANITARY LINE
 - G — EX. STORM SEWER
 - CCTV — EX. PHONE LINE
 - E — EX. ELECTRIC LINE
 - G — EX. GAS LINE
 - W — PROP. WATER LINE
 - S — PROP. SANITARY LINE
 - G — PROP. STORM SEWER
 - CCTV — PROP. PHONE LINE
 - E — PROP. ELECTRIC LINE
 - G — PROP. GAS LINE

- GENERAL NOTES:**
- ALL EXISTING UTILITIES ARE TO REMAIN UNLESS OTHERWISE NOTED.
 - LIGHT POLES SHALL BE SETBACK AT LEAST 18" FROM TOP BACK OF CURB ADJACENT TO HEAD IN PARKING STALLS.
 - CONTRACTOR VIDEO EXISTING SANITARY SEWER FROM END OF EXISTING STUB TO EXISTING MAIN TO VERIFY CONDITION PRIOR TO CONNECTION.

- CAUTION NOTES:**
- CONTRACTOR TO VERIFY TIE IN LOCATIONS TO EXISTING UTILITIES.
 - CONTRACTOR TO MAINTAIN AT LEAST 18" OF VERTICAL SEPARATION BETWEEN UTILITIES.

APPROVED
 Jun 23 2022
PARKER WATER AND SANITATION DISTRICT

ALL FIRE HYDRANTS SHALL BE INSTALLED ACCORDING TO WATER UTILITY STANDARDS. THE NUMBER AND LOCATIONS OF THE FIRE HYDRANTS AS SHOWN ON THE OVERALL UTILITY PLAN ARE CORRECT AS SPECIFIED BY THE TOWN OF PARKER, COMMUNITY DEVELOPMENT DEPARTMENT.

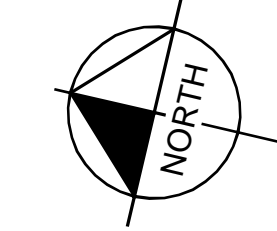
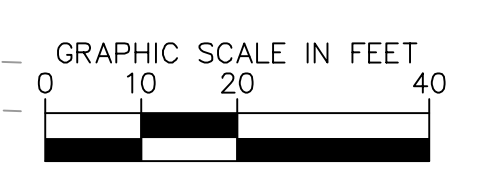
[Signature] 06/22/2022
 FIRE CODE OFFICIAL OR DESIGNATED REPRESENTATIVE DATE

(NOTE - UNDERGROUND FIRE LINE (UFL) SUBMITTAL DOCUMENTS MUST MEET THE REQUIREMENT OF NFPA 24 WHEN SUBMITTING FOR REVIEW.)

The Town of Parker review constitutes general compliance with the Town's Standards and approved variances, subject to these plans being stamped, signed, and dated by the professional engineer of record. Review by the Town does not constitute approval of the plan design or accuracy and correctness of engineering calculations. Errors in the design or calculations remain the responsibility of the registered professional engineer whose stamp and signature are affixed to this document.

This review does not constitute approval of any private on-site improvements which may be shown. Construction cannot commence until all required drainage/traffic report(s), final development plan(s), special review(s), grading permit, and/or other permits are complete, approved and on file with the Town of Parker.

[Signature] 06/24/2022
 Town of Parker, Director of Engineering Date



TITLE	UTILITY PLANS	DATE	4/8/22	REVISION #4	JJM
DESCRIPTION	UTILITY PLAN	DATE	3/9/22	REVISION #3	JJM
SITE ADDRESS	LOT 3, DOUGLAS 234 FILING NO. 6	DATE	11/22/21	REVISION #2	JJM
		DATE	9/21/21	REVISION #1	JJM
		DATE		REV	BY

INSPECTION POLICY:

1. ALL SERVICE INSPECTIONS MUST BE SCHEDULED AT LEAST 24 HOURS IN ADVANCE OF THE REQUESTED INSPECTION.
2. SERVICE INSPECTIONS WILL OCCUR BETWEEN 1:00 P.M. AND 3:00 P.M. SPECIFIC INSPECTION TIMES ARE NOT AVAILABLE.
3. IF THE CONTRACTOR IS NOT READY FOR INSPECTION WHEN THE INSPECTOR ARRIVES AT THE SITE OR SERVICE FAILS, A RE-INSPECTION WILL HAVE TO BE SCHEDULED IN ACCORDANCE WITH NOTES 1 AND 2 ABOVE AND A RE-INSPECTION FEE CHARGED.
4. SHOULD THE SERVICE LINES BE DAMAGED BY LATER CONSTRUCTION, AN INSPECTION OF THE REPAIR WILL BE REQUIRED IN ACCORDANCE WITH NOTES 1 AND 2 ABOVE.
5. THE CONTRACTOR SHALL LEAVE ALL PIPE AND FITTINGS EXPOSED FOR THE INSPECTOR TO OBSERVE. INSPECTORS WILL NOT ENTER ANY EXCAVATIONS TO CHECK MATERIALS. THE TOP LAYER OF BEDDING CAN BE ADDED AFTER THE INSPECTION HAS BEEN COMPLETED.
6. ALL EXCAVATIONS SHALL BE IN ACCORDANCE WITH OSHA STANDARDS.
7. LOTS WITHOUT BUILDING ADDRESSES BEFORE DISTRICT INSPECTION OR METER SET WILL FAIL AUTOMATICALLY.
8. CONTRACTOR MUST BE PRESENT AT TIME OF INSPECTION. UNLESS COORDINATED WITH DISTRICT INSPECTOR.

INSTALLATION NOTES:

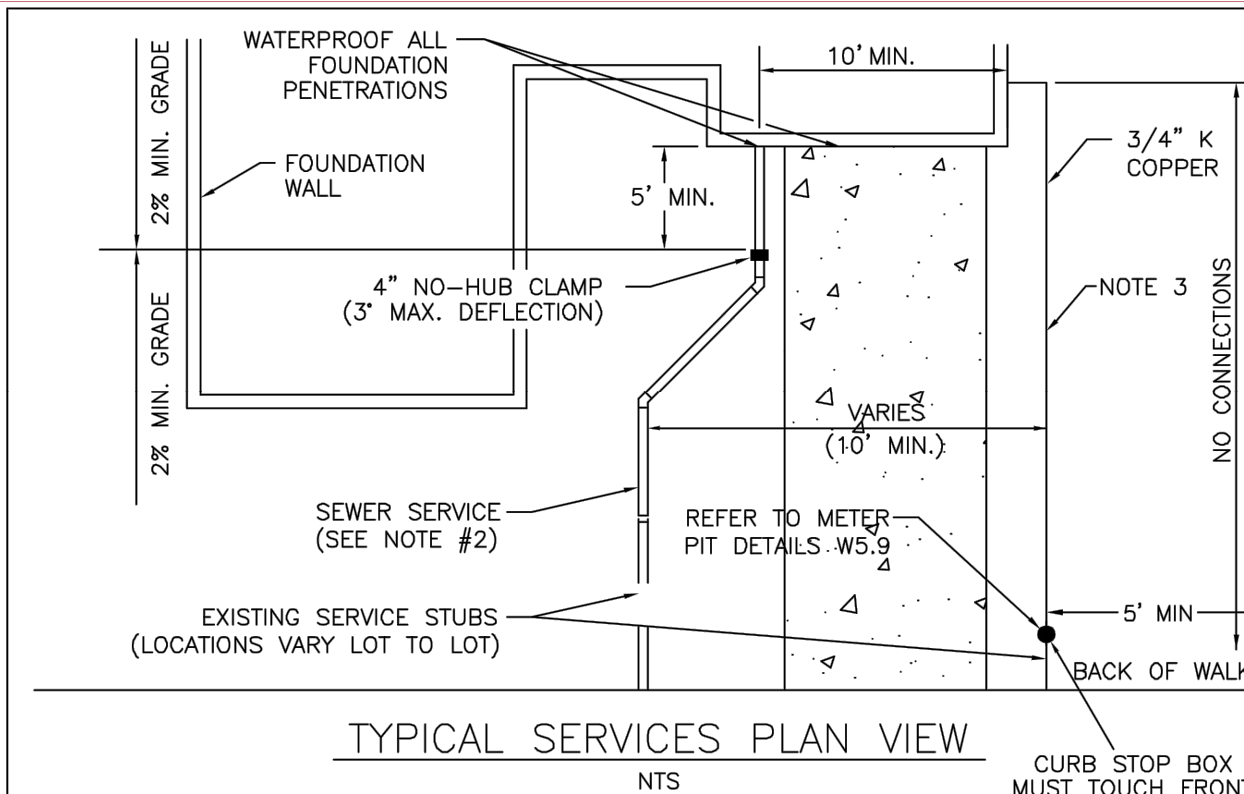
- WATER**
1. ACCEPTABLE PIPE MATERIALS SHALL BE K-COPPER TUBING. (3/4" MIN.)
 2. APPROVED BEDDING TO BE SQUEEGEE.
 3. ONLY ONE COUPLING WILL BE ALLOWED BETWEEN THE STUB-IN AND BUILDING. COMPRESSION COUPLINGS WILL NOT BE ALLOWED ON NEW CONSTRUCTION. SILVER SOLDERED JOINTS MUST BE USED ON SERVICES LARGER THAN 3/4". SILVER SOLDERED JOINTS MUST BE INSPECTED BY PWSO PRIOR TO BURIAL. FLARED COUPLINGS WILL BE ALLOWED ON ALL SERVICES 3/4" AND SMALLER.
 4. A WATER SERVICE WHICH CROSSES A SEWER SERVICE CAN DO SO ONLY AT A 45-90° ANGLE. WATER SERVICES SHALL BE LOCATED A MINIMUM OF 18" ABOVE SEWER SERVICE.
 5. WATER SERVICE FOUNDATION PENETRATIONS SHALL BE WATERPROOFED USING MASTIC OR OTHER APPROVED METHOD. CRAWL SPACE REQUIRES CONTINUOUS COPPER WITH A 1" BURY.
 6. CURB STOP MUST BE PLUMB AND CENTERED OVER THE NUT. IT SHOULD BE STRAPPED TO THE METER PIT (RESIDENTIAL INSTALLATIONS) OR CENTERED OVER THE EASEMENT LINE (COMMERCIAL INSTALLATIONS). THE ASSEMBLY MUST BE AT OR SLIGHTLY ABOVE FINISHED GRADE.
 7. MOVED CURB BOXES MUST BE INSPECTED BY PWSO PRIOR TO BURIAL.
 8. WATERLINE MUST BE ATTACHED TO A SUPPORT BOARD THAT IS MOUNTED TO THE WALL.
 9. NO VOIDS ALLOWED UNDER WATERLINES FROM STOP BOX TO FOUNDATION.
 10. CURBSTOP BOXES AND METER PITS CANNOT BE IN DRIVEWAYS.
 11. ONLY 3/4" (JUMPER) PIPES (RESIDENCES) ARE ALLOWED. (JUMPER) PIPES WILL BE REMOVED PRIOR TO METER SET DATE.
 12. ALL SERVICES WILL BE PERMANENTLY MARKED ON CURB FACE AS FOLLOWS:
 "X" FOR SANITARY SEWER SERVICE
 "W" FOR WATER SERVICES
 13. NO SPLICES OR FLARED COUPLINGS ALLOWED ON SERVICES LARGER THAN 3/4". SILVER SOLDERED JOINTS MUST BE USED IN MOVING STOPBOXES ON SERVICES LARGER THAN 3/4". SILVER SOLDERED JOINTS MUST BE INSPECTED BY PWSO PRIOR TO BURIAL. FLARED COUPLINGS WILL BE ALLOWED ON ALL SERVICES 3/4" AND SMALLER.

PARKER WATER & SANITATION DISTRICT
DISTRICT POLICIES & INSTALLATION NOTES FOR WATER SERVICES

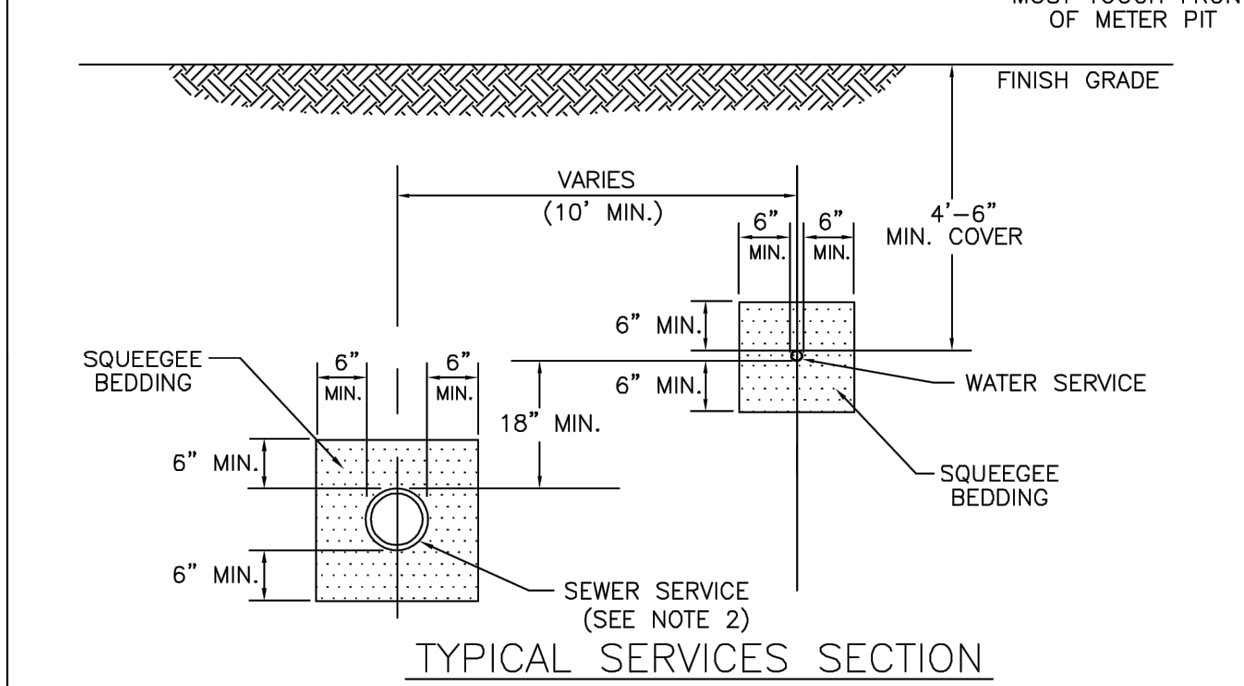
SCALE: NONE	DATE: 2/96
APPROVED: PVR	1/04 1/16 10/16
DIRECTOR OF ENGINEERING	

SHEET W1.1

2016 REVISION



TYPICAL SERVICES PLAN VIEW



TYPICAL SERVICES SECTION

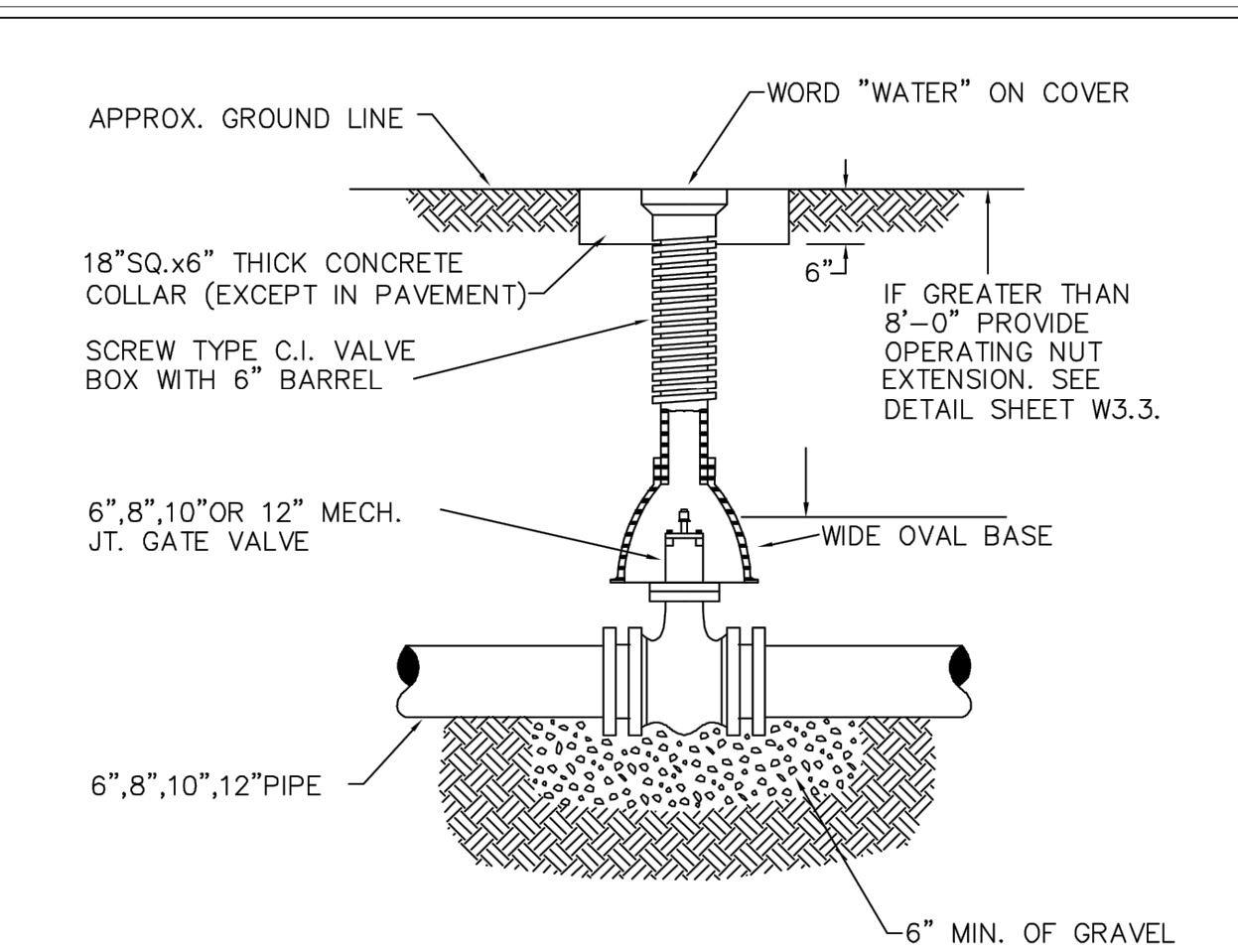
PARKER WATER & SANITATION DISTRICT
TYPICAL WATER SERVICES

NOTE:
1. SEE SHEET W1.1 FOR DISTRICT POLICIES AND INSTALLATION NOTES.
2. REFER TO SEWER SERVICES DETAIL SHEET S1.2.
3. 4" PVC SLEEVES REQUIRED FOR SERVICE LINES UNDER CONCRETE SURFACE.

SCALE: NONE	DATE: 2/96
APPROVED: PVR	1/04 10/16 06/05 12/07 1/16
DIRECTOR OF ENGINEERING	

SHEET W1.2

2016 REVISION



6-INCH VALVE BOXES
CHECK MATERIAL SPECIFICATIONS

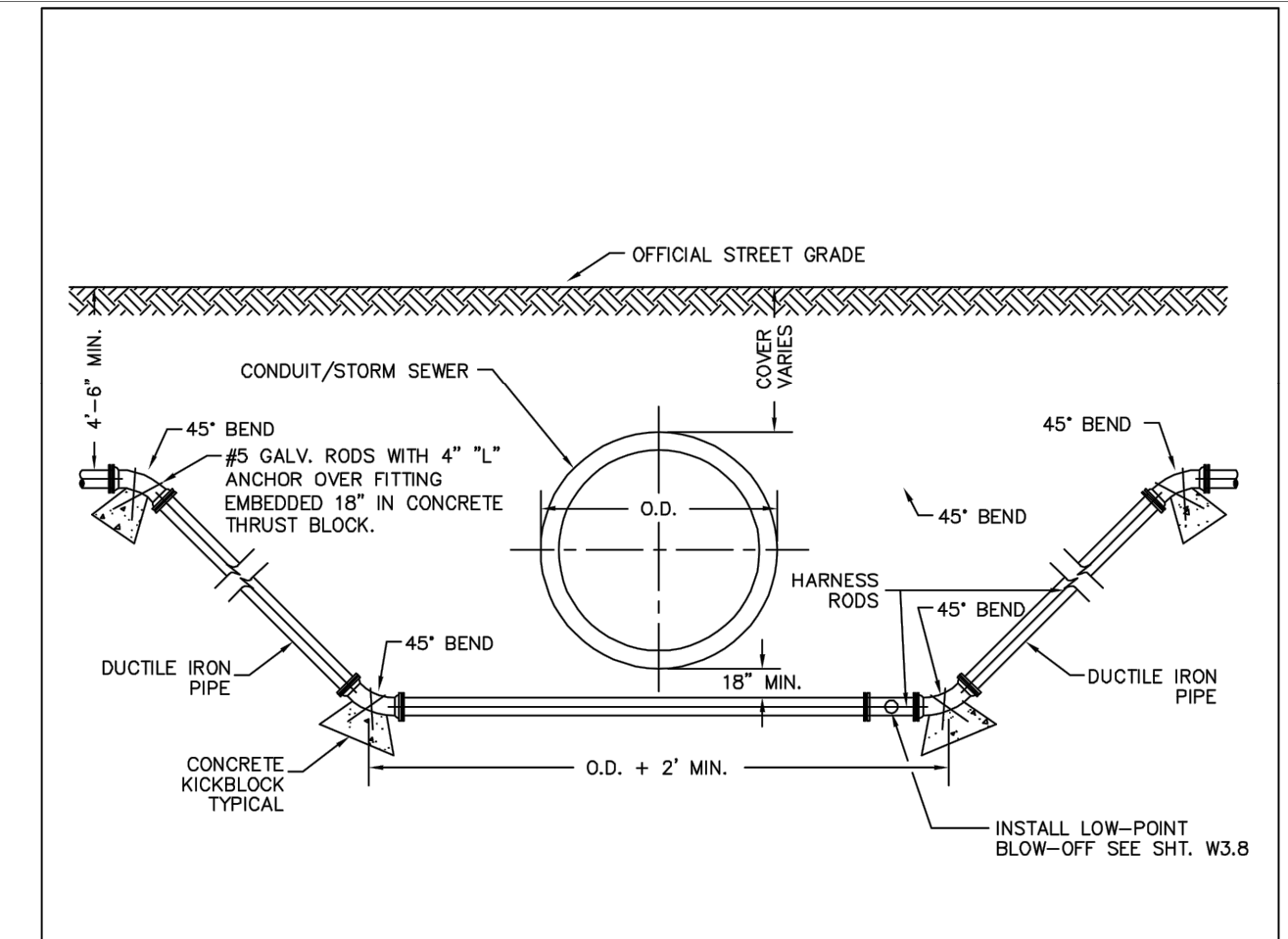
PARKER WATER & SANITATION DISTRICT
VALVE BOX DETAIL

NOTE:
1. ALL C.I. SHALL BE WRAPPED WITH 8 MIL. MIN. THICKNESS POLYETHYLENE.
2. VALVE NUT SHALL BE CENTERED.
3. VALVE BOX SHALL BE PLUMB.
4. SEE MATERIAL SPECIFICATIONS FOR VALVE BOX WITH GREATER THAN BURIED DEPTH OF 4.5 FT.

SCALE: NONE	DATE: 2/96
APPROVED: PVR	5/98 10/16 6/99 12/07 1/16
DIRECTOR OF ENGINEERING	

SHEET W3.10

2016 REVISION



PARKER WATER & SANITATION DISTRICT
CONDUIT OR STORM SEWER CROSSING

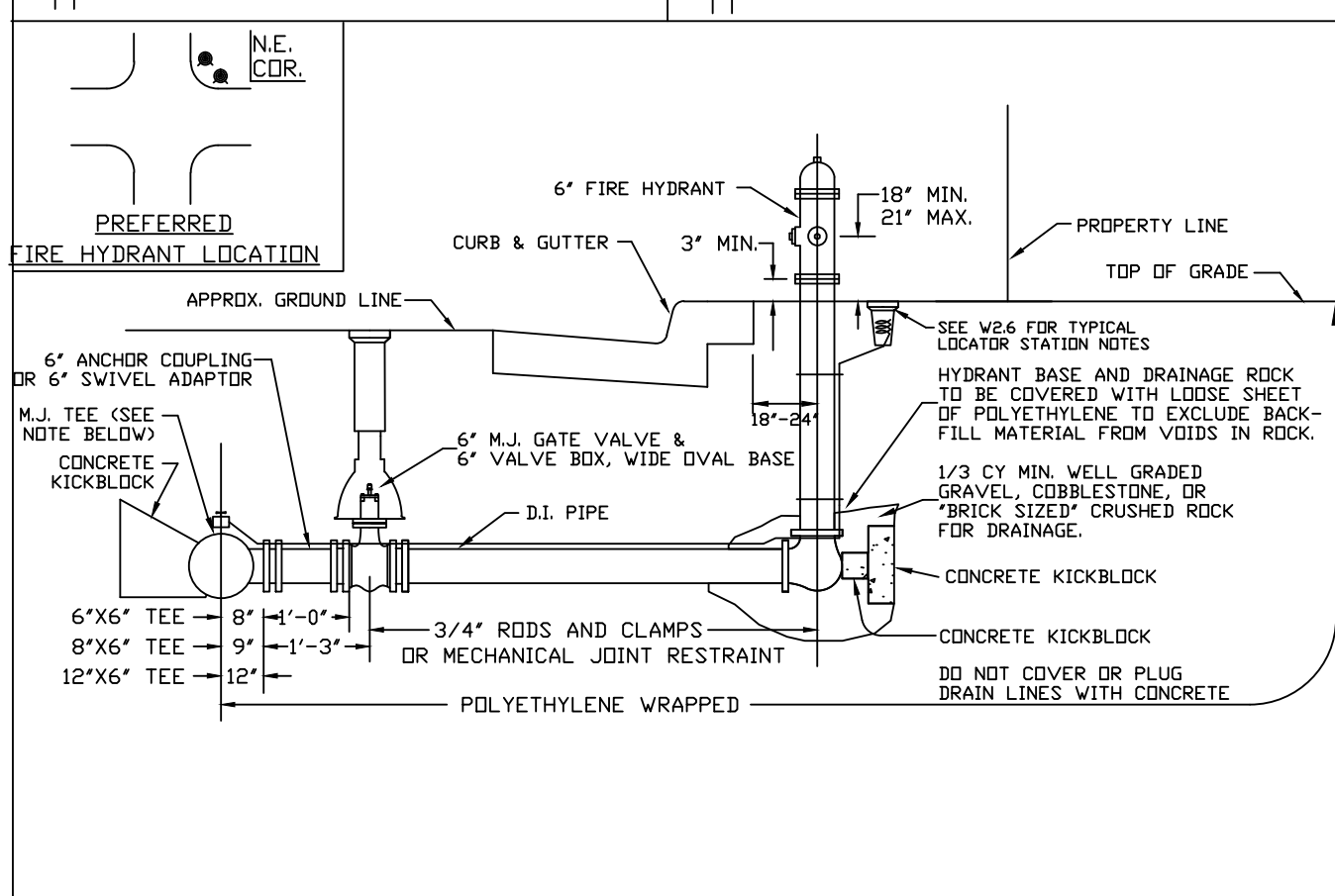
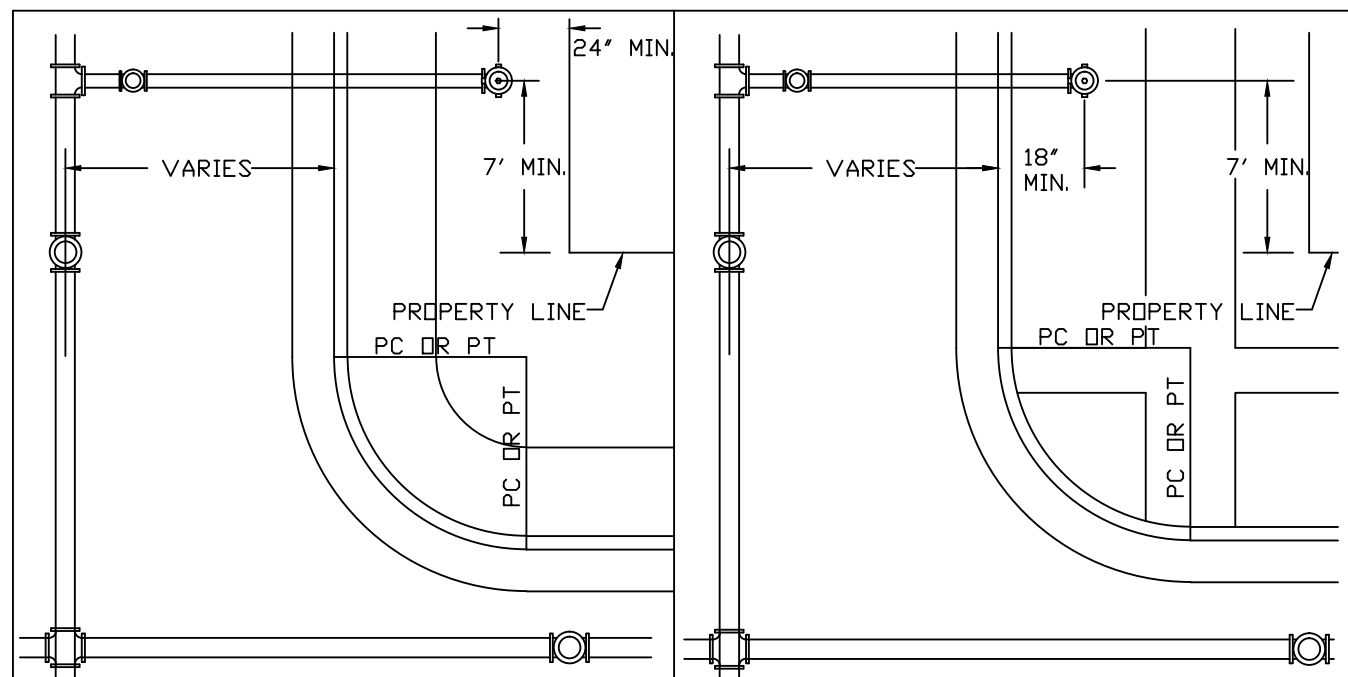
PARKER WATER & SANITATION DISTRICT
CONDUIT OR STORM SEWER CROSSING

NOTE:
1. LENGTH OF EXTENSION OF PIPE AND HARNESS RODS SHALL BE IN ACCORDANCE WITH THESE ENGINEERING STANDARDS.
2. ALL WATER MAINS TWELVE (12") INCHES OR SMALLER, WHICH CROSS UNDER CONDUITS/STORM SEWER SHALL BE DUCTILE IRON OR PVC PER SPECIFICATIONS.
3. A BORED CROSSING MAY BE REQUIRED BY THE ENGINEER.
4. CONCRETE KICKLOCKS PER SHEET W3.18.

SCALE: NONE	DATE: 2/96
APPROVED: PVR	5/98 10/16 2/00 12/07 1/16
DIRECTOR OF ENGINEERING	

SHEET W4.6

2016 REVISION



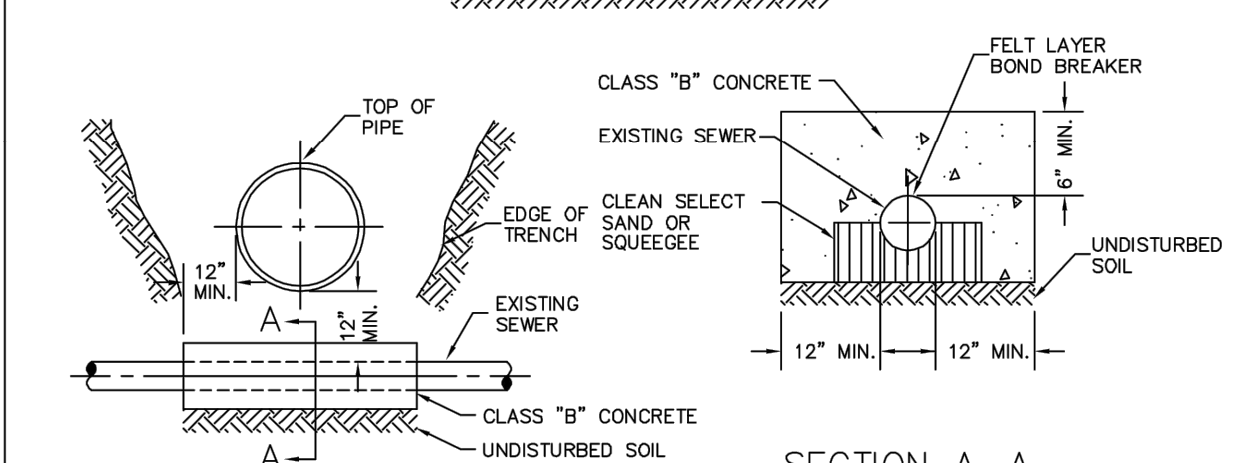
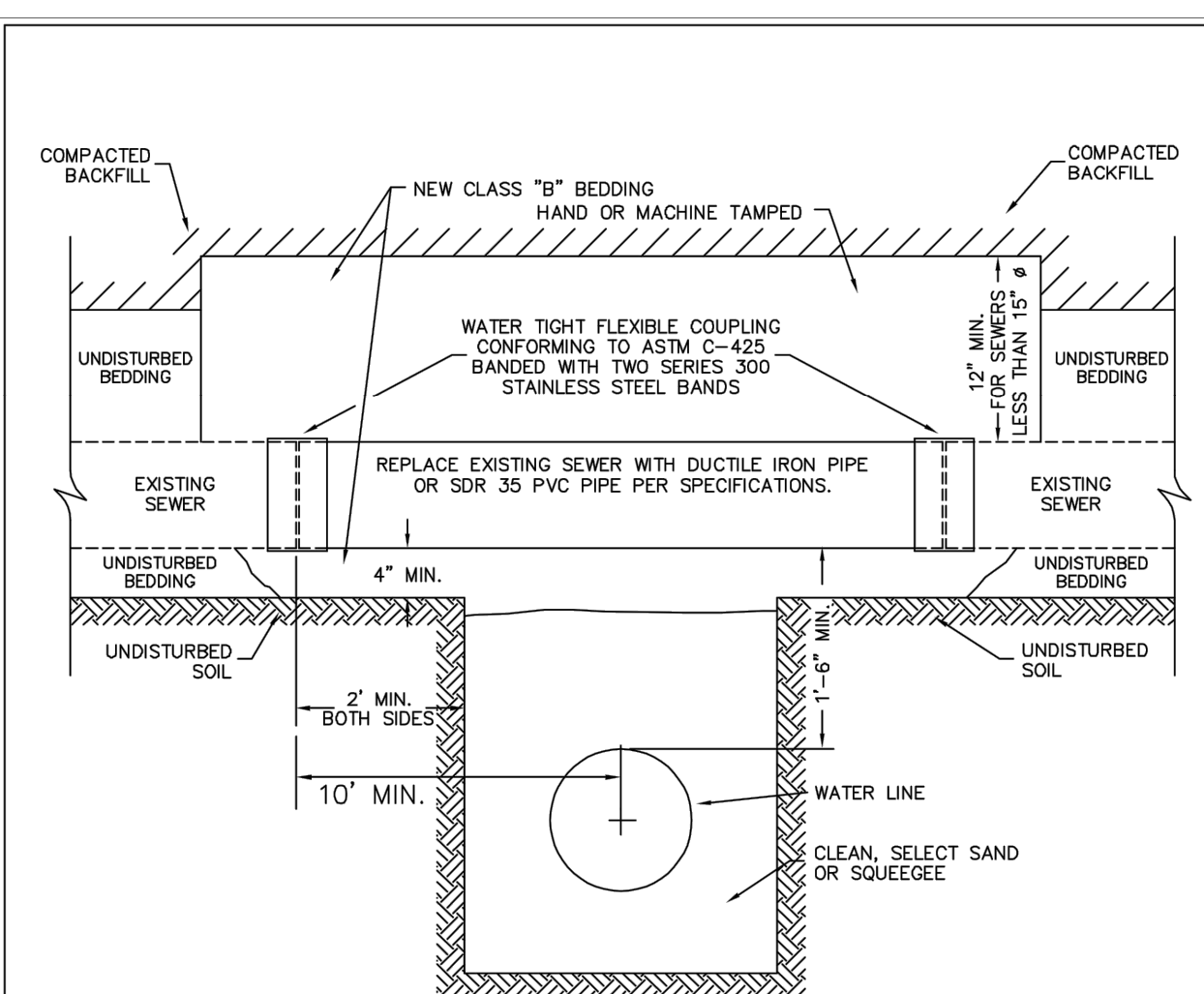
PARKER WATER & SANITATION DISTRICT
FIRE HYDRANTS LOCATION & INSTALLATION

NOTE:
1. ALTERNATE TO THE ABOVE: FASTEN M.J. VALVE DIRECTLY TO A M.J. ANCHOR TEE (ALSO CALLED SUIVVEL TEE)
2. NO HORIZONTAL OR VERTICAL BENDS ARE ALLOWED IN FIRE HYDRANT BRANCH
4. NO PORTION OF FIRE HYDRANT MAY
5. FIRE HYDRANT EXTENSIONS MAY NOT BE IN THE SIDEWALK AREA.

SCALE: NONE	DATE: 2/96
APPROVED: RWT	4/01 10/16 01/02 11/19 12/07 1/16
DIRECTOR OF ENGINEERING	

SHEET W2.5

2020 REVISION



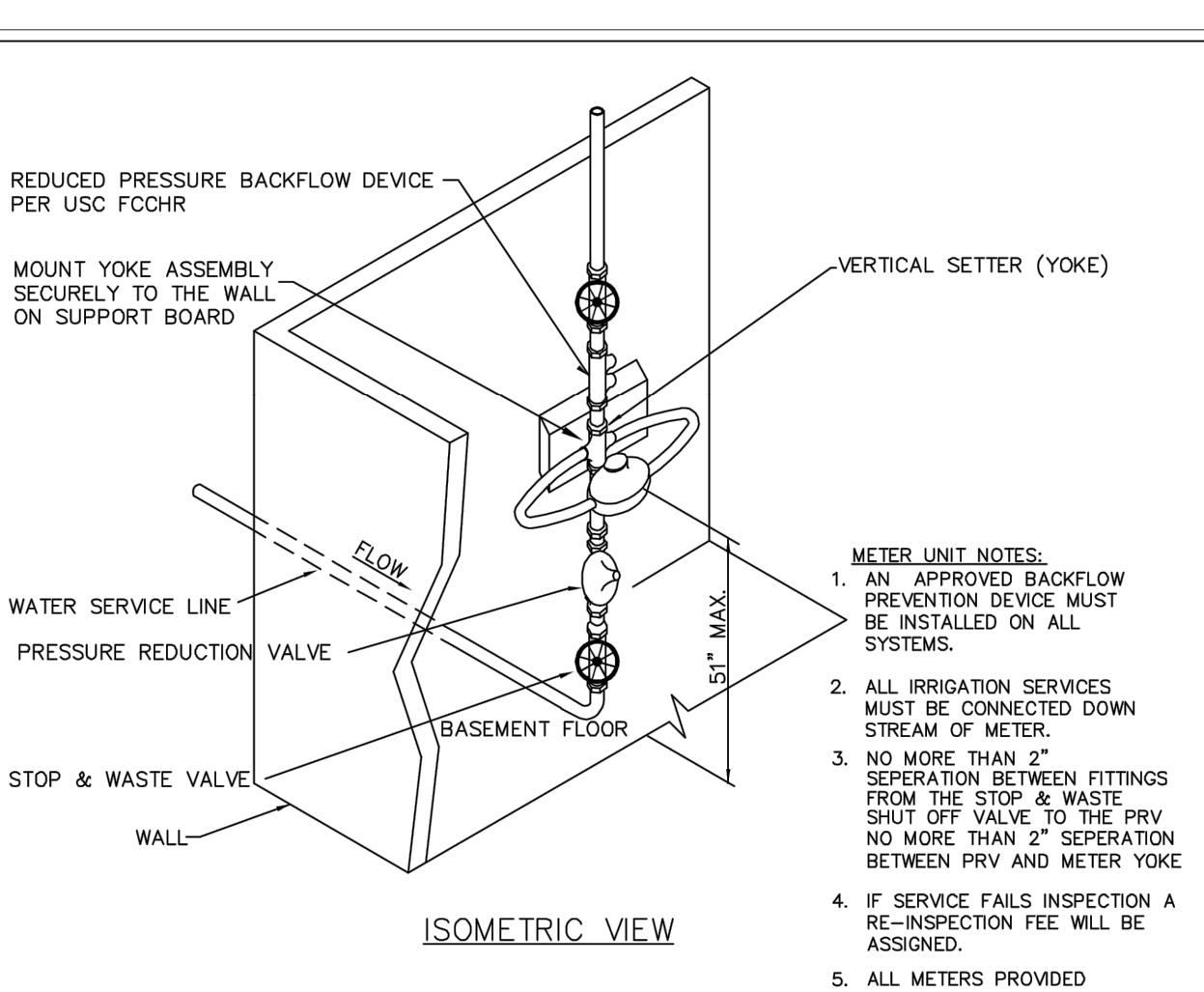
PARKER WATER & SANITATION DISTRICT
CROSSING STORM & SANITARY SEWERS

NOTE:
1. PIPE SHALL BE WRAPPED WITH FELT LAYER BEFORE ENCASING.

SCALE: NONE	DATE: 2/96
APPROVED: PVR	1/16 10/16
DIRECTOR OF ENGINEERING	

SHEET W4.7

2016 REVISION



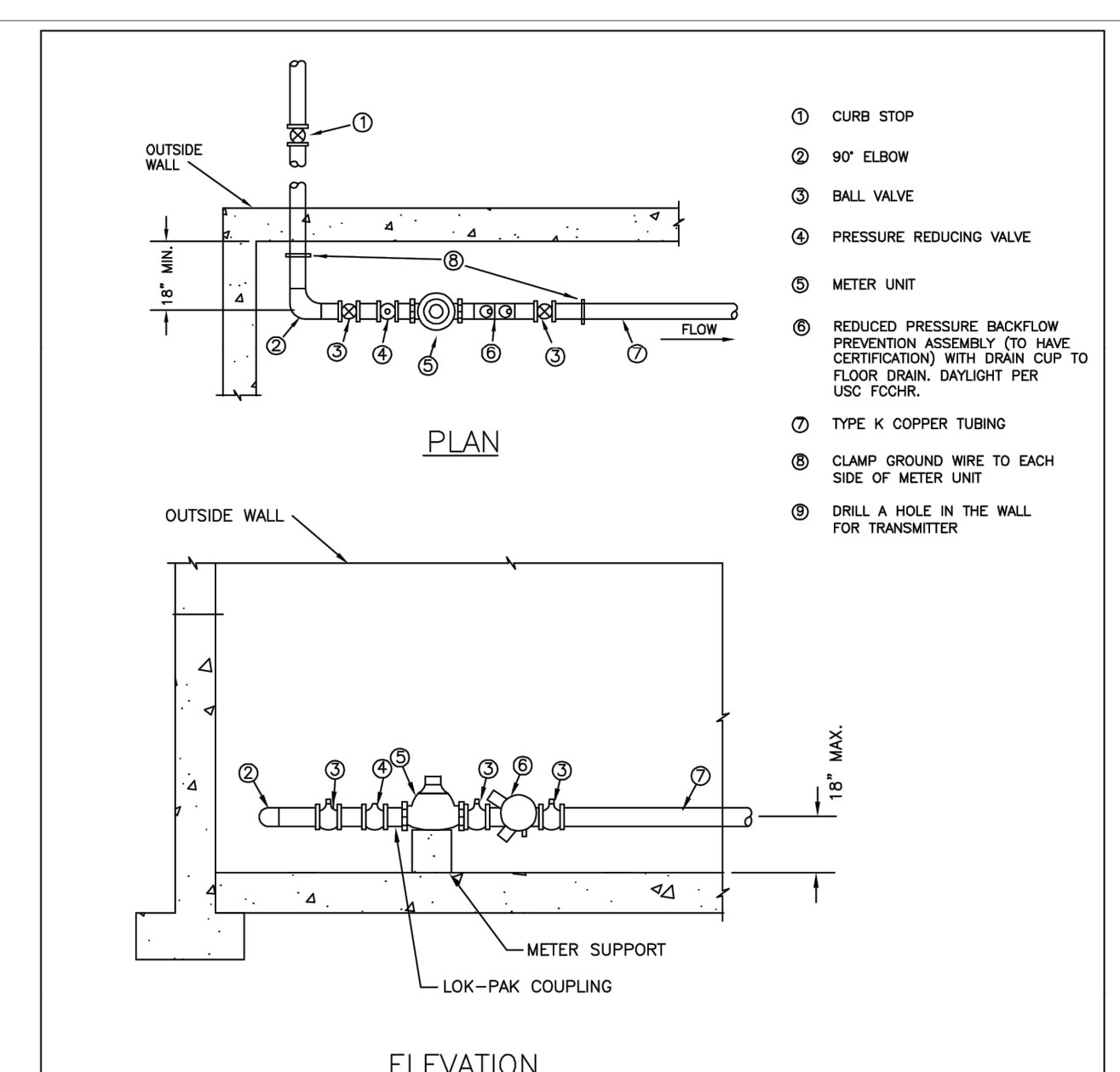
PARKER WATER & SANITATION DISTRICT
SERVICE LINE, STOP BOX & INSIDE METER SETTING (COMMERCIAL ONLY)

NOTE:
1. AN APPROVED BACKFLOW PREVENTION DEVICE MUST BE INSTALLED ON ALL SYSTEMS.
2. ALL IRRIGATION SERVICES MUST BE CONNECTED DOWN STREAM OF METER.
3. NO MORE THAN 2" SEPARATION BETWEEN FITTINGS FROM THE STOP & WASTE SHUT OFF VALVE TO THE PRV NO MORE THAN 2" SEPARATION BETWEEN PRV AND METER YOKE
4. IF SERVICE FAILS INSPECTION A RE-INSPECTION FEE WILL BE ASSIGNED.
5. ALL METERS PROVIDED BY PWSO.

SCALE: NONE	DATE: 2/96
APPROVED: PVR	5/99 10/16 06/05 1/16
DIRECTOR OF ENGINEERING	

SHEET W5.9

2016 REVISION



PARKER WATER & SANITATION DISTRICT
INSIDE SETTING FOR 1 1/2 & 2" METER

NOTE:
1 - PIPE JOINT SHALL BE THREADED OR SOLDERED WITH SILVER SOLDER.
2 - INSTALLATION MUST ALLOW ACCESS FOR MAINTENANCE AND BE PROTECTED FROM FREEZING.
3 - SEE WATER SYSTEM SPECIFICATIONS FOR GENERAL METER NOTES.
4 - COMPANION FLANGES SHALL BE BRASS.
5 - METER SUPPORT SHALL BE EITHER CONCRETE OR ADJ. STEEL PIPE (SEE SHEET W3.10)
6 - 1.0" MINIMUM CLEARANCE AROUND BACKFLOW DEVICE
7 - FLOOR DRAIN TO BE 2X PIPE SIZE
8 - FOR IRRIGATION USES, ADD RAIN SENSOR AND SMART I.T. CONTROLLER.

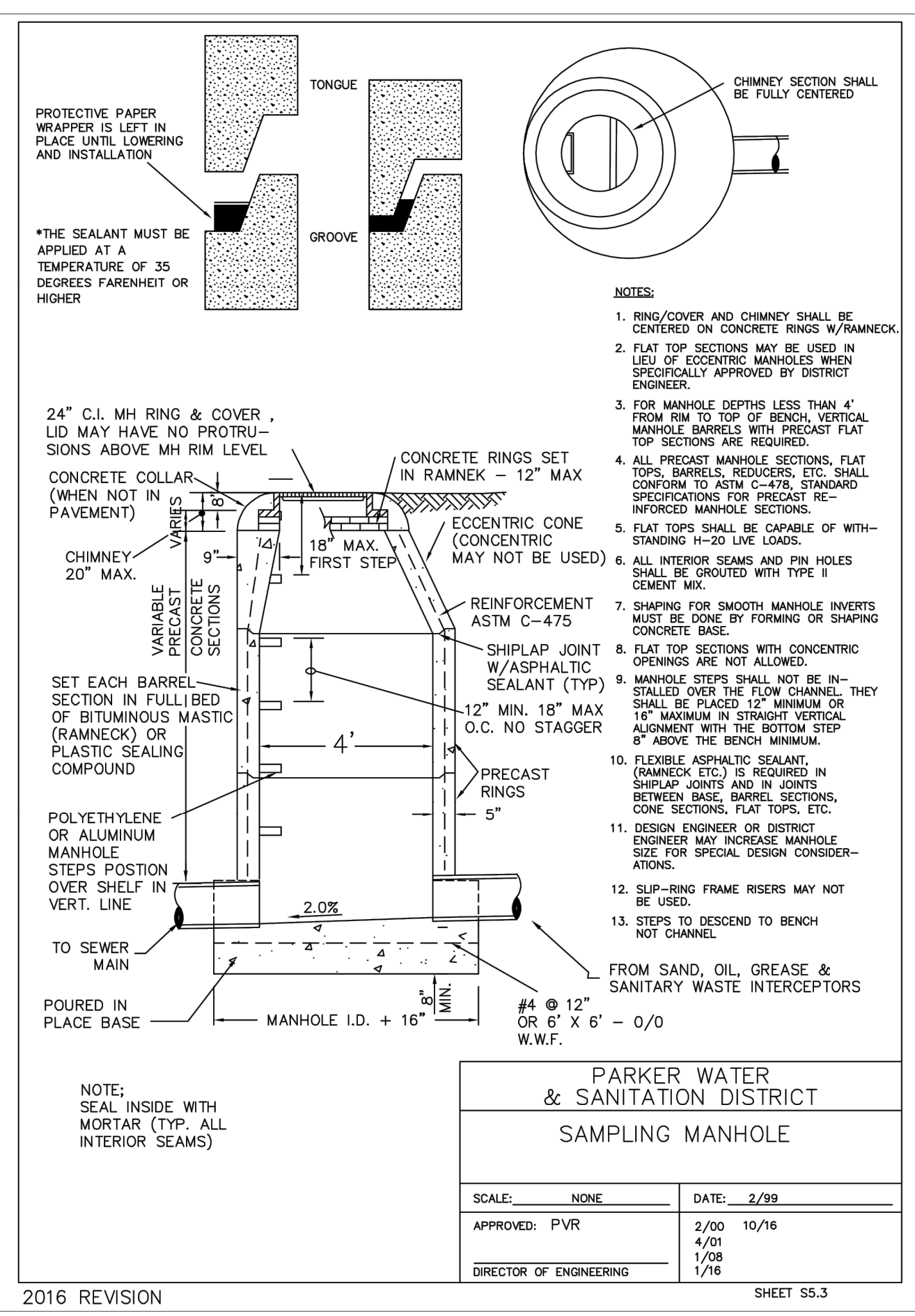
SCALE: NONE	DATE: 2/96
APPROVED: PVR	5/99 01/02 01/16 2/00 06/05 10/16 4/01 07/06
DIRECTOR OF ENGINEERING	

SHEET W5.14

2016 REVISION

APPROVED
Jun 23 2022
PARKER WATER AND SANITATION DISTRICT

JUN	JUN	JUN	JUN	JUN	JUN	JUN	JUN	JUN	BY
4	3	2	1	REV	DATE	DESCRIPTION			
4	3	2	1	REV	DATE	DESCRIPTION			
4	3	2	1	REV	DATE	DESCRIPTION			
4	3	2	1	REV	DATE	DESCRIPTION			
4	3	2	1	REV	DATE	DESCRIPTION			
4	3	2	1	REV	DATE	DESCRIPTION			
4	3	2	1	REV	DATE	DESCRIPTION			
4	3	2	1	REV	DATE	DESCRIPTION			
4	3	2	1	REV	DATE	DESCRIPTION			
4	3	2	1	REV	DATE	DESCRIPTION			
4	3	2	1	REV	DATE	DESCRIPTION			
4	3	2	1	REV	DATE	DESCRIPTION			
4	3	2	1	REV	DATE	DESCRIPTION			
4	3	2	1	REV	DATE	DESCRIPTION			
4	3	2	1	REV	DATE	DESCRIPTION			
4	3	2	1	REV	DATE	DESCRIPTION			
4	3	2	1	REV	DATE	DESCRIPTION			
4	3	2	1	REV	DATE	DESCRIPTION			
4	3	2	1	REV	DATE	DESCRIPTION			
4	3	2	1	REV	DATE	DESCRIPTION			
4	3	2	1	REV	DATE	DESCRIPTION			
4	3	2	1	REV	DATE	DESCRIPTION			
4	3	2	1	REV	DATE	DESCRIPTION			
4	3	2	1	REV	DATE	DESCRIPTION			
4	3	2	1	REV	DATE	DESCRIPTION			
4	3	2	1	REV	DATE	DESCRIPTION			
4	3	2	1	REV	DATE	DESCRIPTION			
4	3	2	1	REV	DATE	DESCRIPTION			
4	3	2	1	REV	DATE	DESCRIPTION			
4	3	2	1	REV	DATE	DESCRIPTION			
4	3	2	1	REV	DATE	DESCRIPTION			
4	3	2	1	REV	DATE	DESCRIPTION			
4	3	2	1	REV	DATE	DESCRIPTION			
4	3	2	1	REV	DATE	DESCRIPTION			
4	3	2	1	REV	DATE	DESCRIPTION			
4	3	2	1	REV	DATE	DESCRIPTION			
4	3	2	1	REV	DATE	DESCRIPTION			
4	3	2	1	REV	DATE	DESCRIPTION			
4	3	2	1	REV	DATE	DESCRIPTION			
4	3	2	1	REV	DATE	DESCRIPTION			
4	3	2	1	REV	DATE	DESCRIPTION			
4	3	2	1	REV	DATE	DESCRIPTION			
4	3	2	1	REV	DATE	DESCRIPTION			
4	3	2	1	REV	DATE	DESCRIPTION			
4	3	2	1	REV	DATE	DESCRIPTION			
4	3	2	1	REV	DATE	DESCRIPTION			
4	3	2	1	REV	DATE	DESCRIPTION			
4	3	2	1	REV	DATE	DESCRIPTION			
4	3	2	1	REV	DATE	DESCRIPTION			
4	3	2	1	REV	DATE	DESCRIPTION			
4	3	2	1	REV	DATE	DESCRIPTION			
4	3	2	1	REV	DATE	DESCRIPTION			
4	3	2	1	REV	DATE	DESCRIPTION			
4	3	2	1	REV	DATE	DESCRIPTION			
4	3	2	1	REV	DATE	DESCRIPTION			
4	3	2	1	REV	DATE	DESCRIPTION			
4	3	2	1	REV	DATE	DESCRIPTION			
4	3	2	1	REV	DATE	DESCRIPTION			
4	3	2	1	REV	DATE	DESCRIPTION			
4	3	2	1	REV	DATE	DESCRIPTION			
4	3	2	1	REV	DATE	DESCRIPTION			
4	3	2	1	REV	DATE	DESCRIPTION			
4	3	2	1	REV	DATE	DESCRIPTION			
4	3	2	1	REV	DATE	DESCRIPTION			
4	3	2	1	REV	DATE	DESCRIPTION			
4	3	2	1	REV	DATE	DESCRIPTION			
4	3	2	1	REV	DATE	DESCRIPTION			
4	3	2	1	REV	DATE	DESCRIPTION			
4	3	2	1	REV	DATE				



**PARKER WATER & SANITATION DISTRICT
SAMPLING MANHOLE**

SCALE: NONE DATE: 2/99
APPROVED: PVR 2/00 10/16
1/08 1/16
DIRECTOR OF ENGINEERING

2016 REVISION SHEET S5.3

INSPECTION POLICY:

- ALL SERVICE INSPECTIONS MUST BE SCHEDULED WITH THE DISTRICT OFFICE AT LEAST 24 HOURS IN ADVANCE OF THE REQUESTED INSPECTION.
- IF THE CONTRACTOR IS NOT READY FOR INSPECTION WHEN THE INSPECTOR ARRIVES AT THE SITE, A RE-INSPECTION WILL HAVE TO BE SCHEDULED IN ACCORDANCE WITH NOTE 1 ABOVE AND A RE-INSPECTION FEE CHARGED.
- SHOULD THE SERVICE LINES BE DAMAGED BY LATER CONSTRUCTION, AN INSPECTION OF THE REPAIR WILL BE REQUIRED IN ACCORDANCE WITH NOTES 1 AND 2 ABOVE.
- THE CONTRACTOR SHALL LEAVE ALL PIPE AND FITTINGS EXPOSED FOR THE INSPECTOR TO OBSERVE. INSPECTORS WILL NOT ENTER ANY EXCAVATIONS TO CHECK MATERIALS. THE TOP LAYER OF BEDDING CAN BE ADDED AFTER THE INSPECTION HAS BEEN COMPLETED.
- ALL EXCAVATIONS SHALL BE IN ACCORDANCE WITH OSHA STANDARDS.
- LOTS WITHOUT BUILDING ADDRESSES OR LOT AND BLOCK NUMBERS BEFORE DISTRICT INSPECTION OR METER SET WILL FAIL AUTOMATICALLY.
- CONTRACTOR MUST BE PRESENT AT TIME OF INSPECTION UNLESS COORDINATED WITH DISTRICT INSPECTOR.

INSTALLATION NOTES:

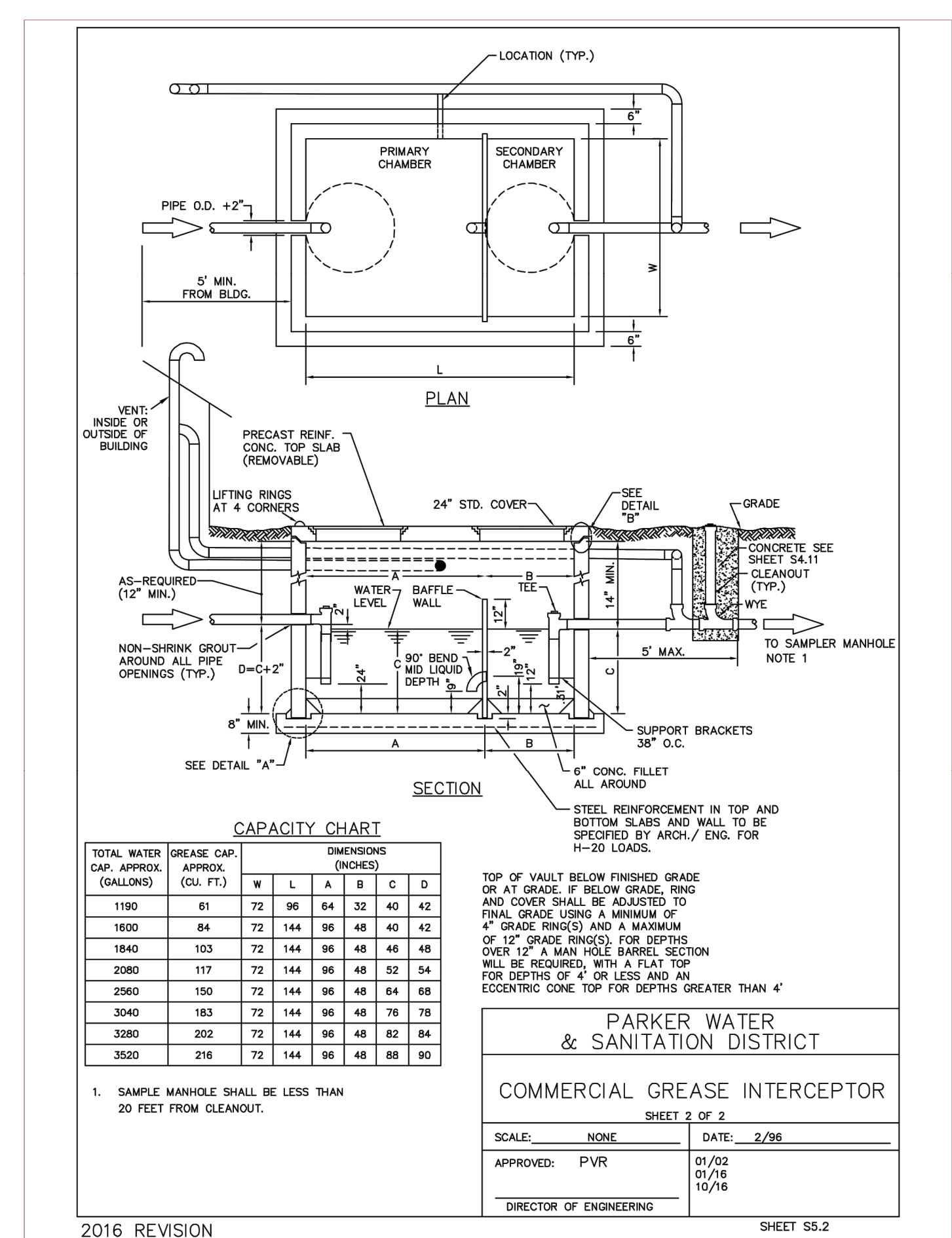
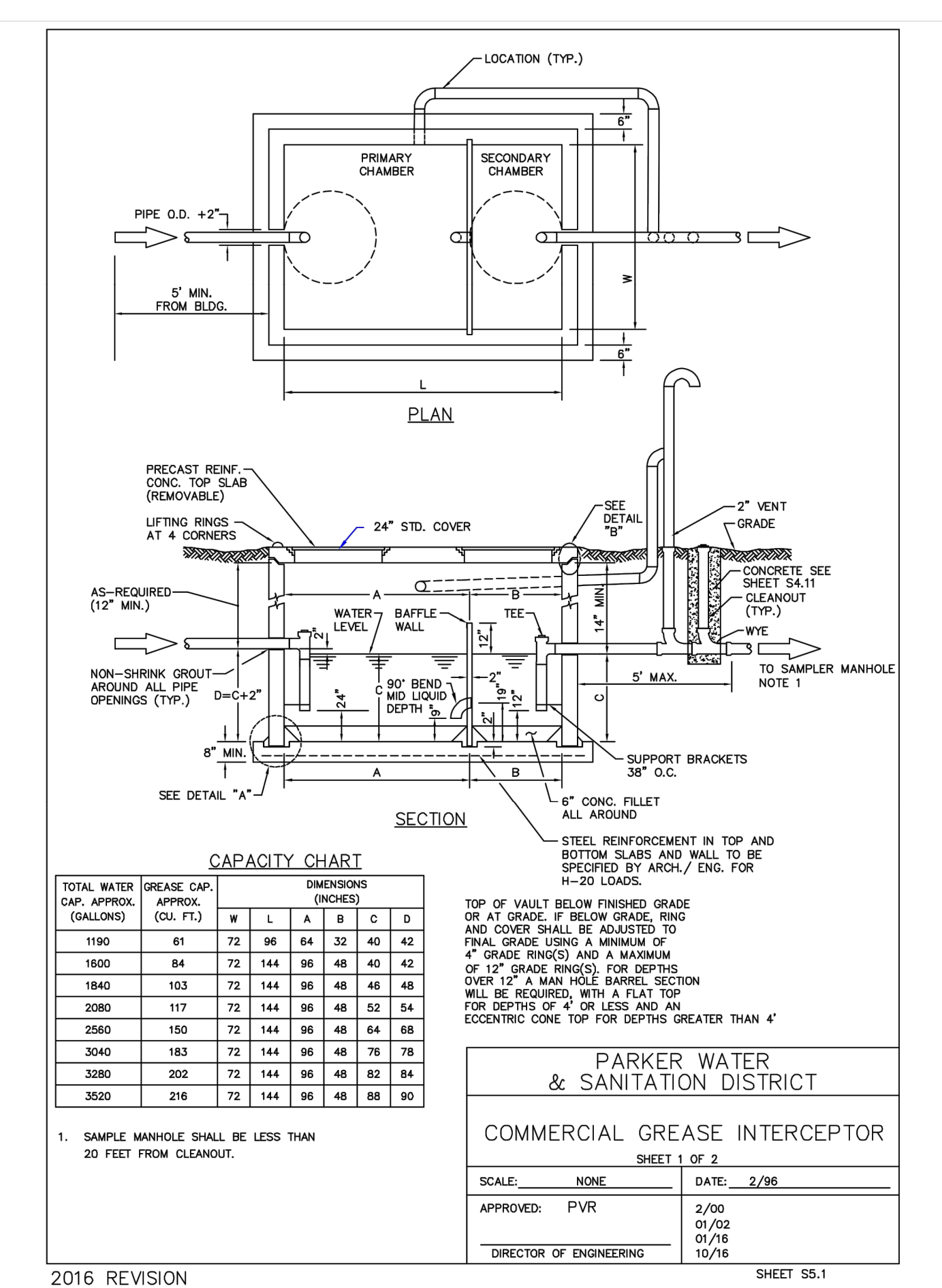
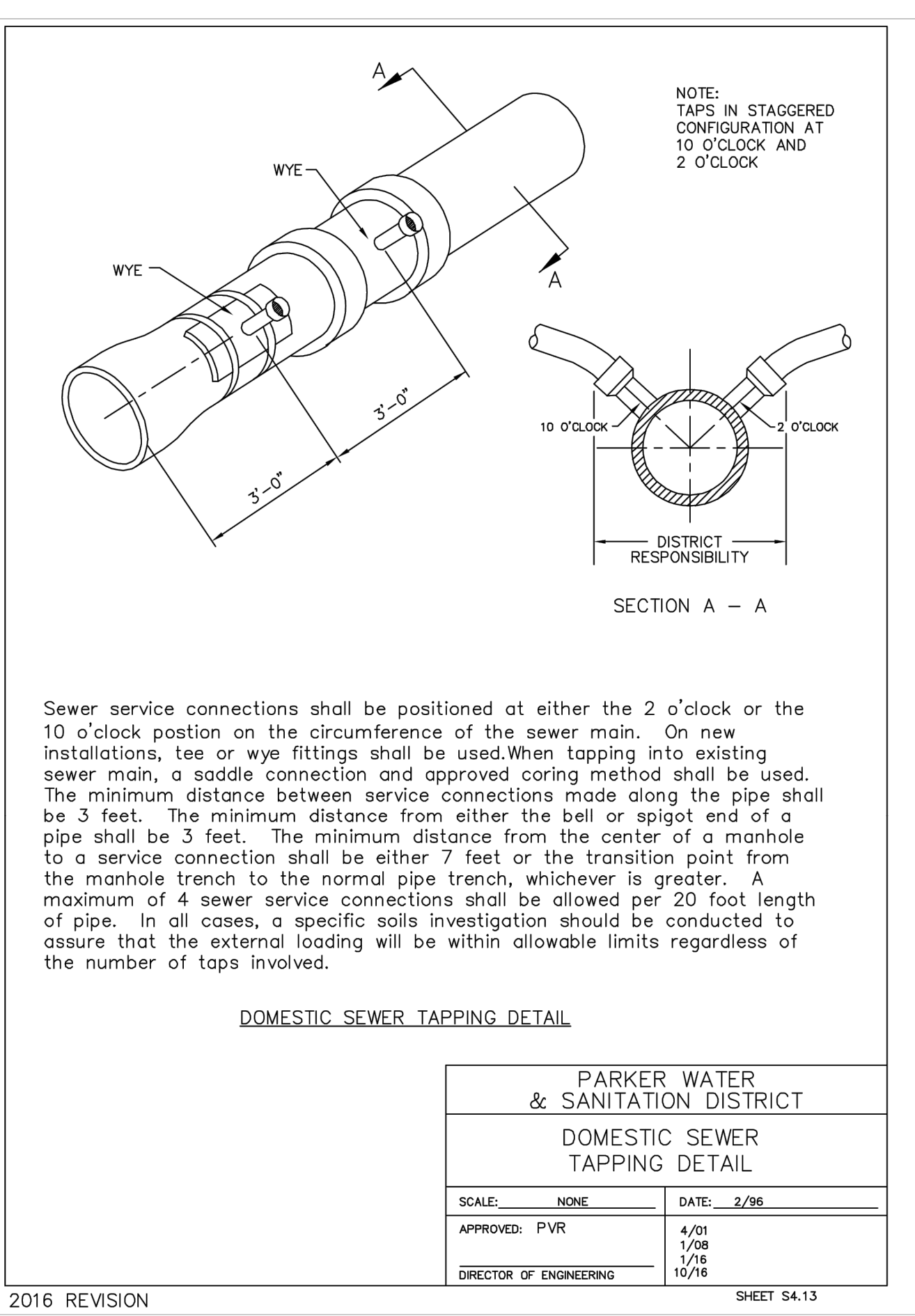
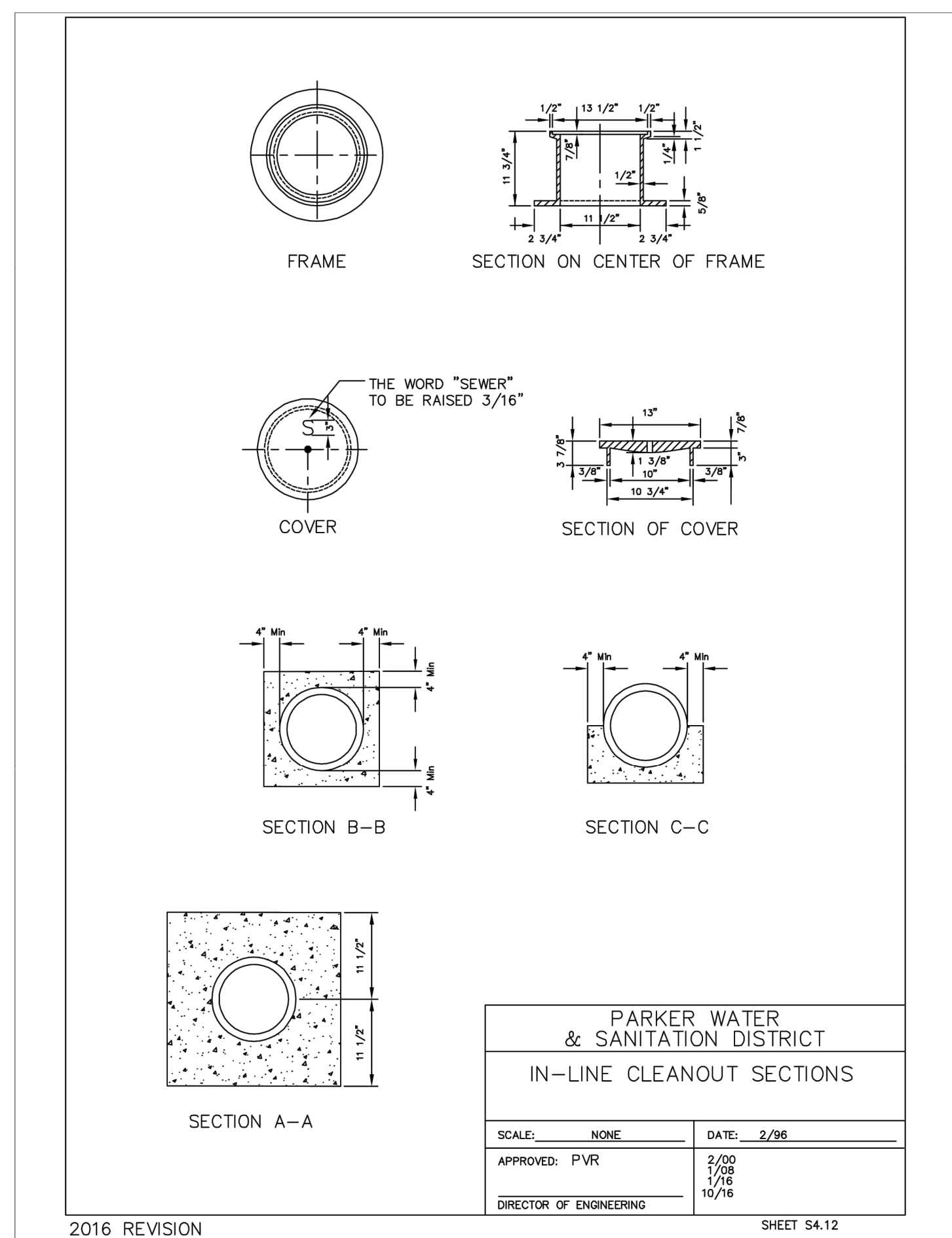
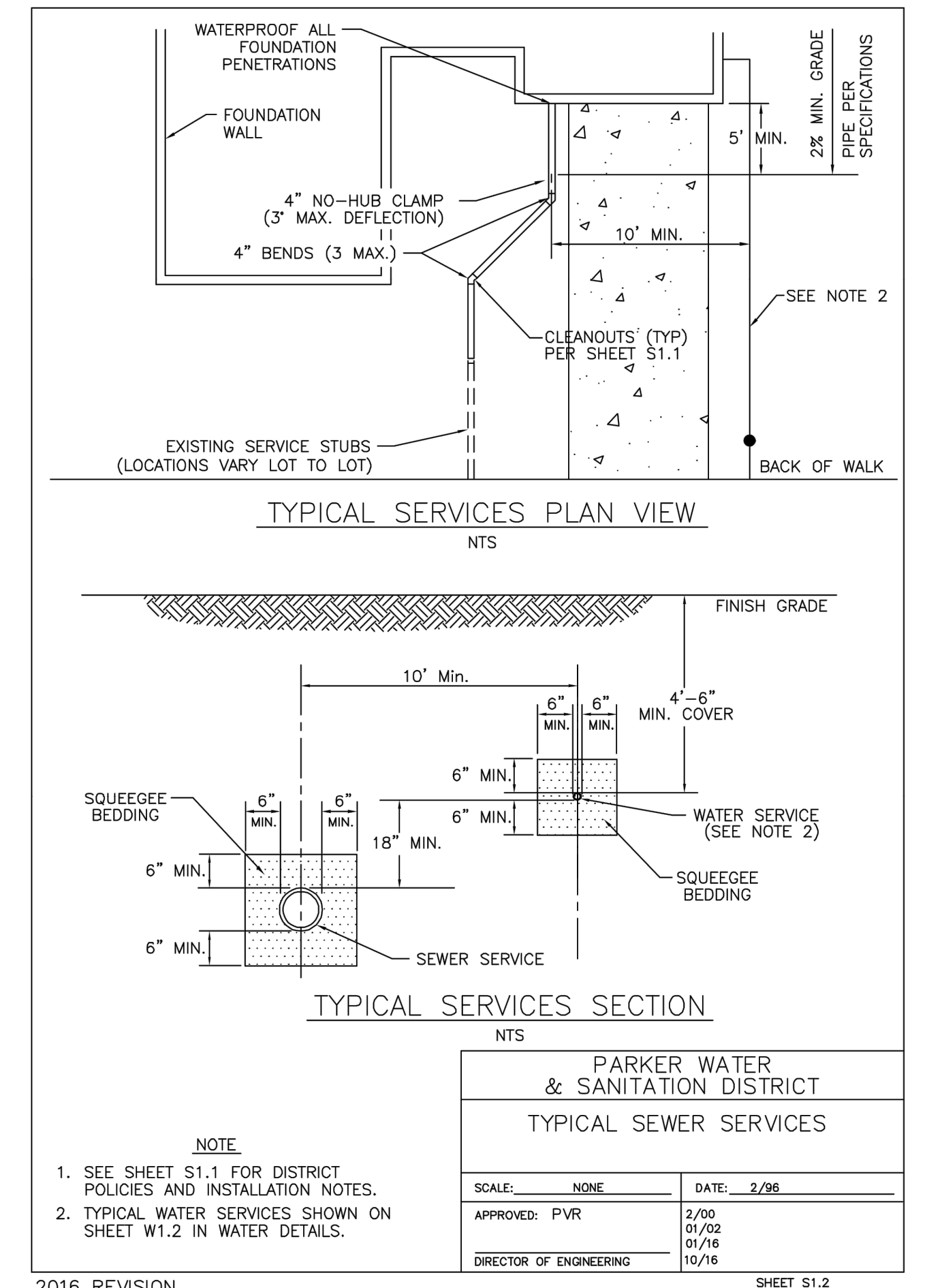
SEWER

- ACCEPTABLE PIPE MATERIALS ARE TO BE SDR 35 PVC PIPE, ABS PIPE AND PVC SCHD 40 PIPE. APPROVED BEDDING IS TO BE SQUEEGEE.
- NO-HUB CLAMPS SHALL BE USED TO JOIN 2 MALE PIPE ENDS WITH A MAXIMUM DEFLECTION OF 3".
- MINIMUM GRADE SHALL BE 2%.
- INSTALLATION SHALL INCLUDE NO MORE THAN 3 BENDS. 90° BENDS ARE NOT ALLOWED. SOLVENT WELDED PIPE WILL NOT BE ALLOWED.
- CLEAN-OUTS SHALL BE INSTALLED AT 100' INTERVALS AND EVERY CHANGE IN DIRECTION. CLEAN-OUTS ARE NOT REQUIRED FOR SERVICES LESS THAN 100' UNLESS THERE ARE CHANGES IN DIRECTION. PROVIDE DUAL CLEAN-OUT WITHIN 5 FEET OF FOUNDATION.
- STRESSING OF THE PIPE BETWEEN FITTINGS WILL NOT BE ALLOWED.
- SEWER SERVICE LINE SHALL NOT BE LOCATED UNDER CONCRETE SURFACE.
- ALL SERVICES WILL BE PERMANENTLY MARKED ON CURB FACE AS FOLLOWS:
"X" FOR SANITARY SEWER SERVICE
"V" FOR WATER SERVICES

**PARKER WATER & SANITATION DISTRICT
DISTRICT POLICIES & INSTALLATION NOTES FOR SEWER SERVICES**

SCALE: NONE DATE: 2/96
APPROVED: PVR 2/00 10/16
1/08 1/16
DIRECTOR OF ENGINEERING

2016 REVISION SHEET S1.1



APPROVED
Jun 23 2022
**PARKER WATER AND
SANITATION DISTRICT**

McDonald's USA, LLC
These drawings and specifications are the confidential and proprietary property of McDonald's USA, LLC and shall not be copied or reproduced without written authorization. The contract documents were prepared not suitable for use on a different site or at a later time. Use of these drawings for reference or example on another project requires the the contract documents for reuse on another project is not authorized.

Kimley»Horn
COLORADO LICENSED PROFESSIONAL ENGINEER
59054
6/21/22

UTILITY PLANS
PWSD DETAILS

TITLE: UTILITY PLANS
DESCRIPTION: PWSD DETAILS
SITE ADDRESS: LOT 3, DOUGLAS 234 FLNG. NO. 6
050785

PREPARED BY: JMM
DATE: 07/1/21
REVIEWED BY: JRH
DATE ISSUED: 07/1/21

REVISION #4: 4/8/22
REVISION #3: 3/9/22
REVISION #2: 1/22/21
REVISION #1: 9/21/21

DATE: REV. DATE DESCRIPTION