

UTILITY PLANS

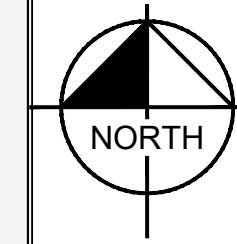
MCDONALD'S CHAMBERS

DOUGLAS 234, FILING NO. 6, BLOCK 1, LOT 3
NEC CHAMBERS ROAD AND HESS ROAD
PARKER, CO

SHEET INDEX	
SHEET NUMBER	SHEET TITLE
PWS	
C2.0	COVER SHEET
C2.1	NOTES
C2.2	UTILITY PLAN
C2.3	PWS DETAILS
C2.4	PWS DETAILS



VICINITY MAP



PROJECT CONTACTS:

DEVELOPER:
MCDONALD'S USA, LLC
4643 S. ULSTER STREET, SUITE 1300
DENVER, CO 80237
TEL: (303) 519-4001
CONTACT: KORTNEY PEDIGO

ARCHITECT:
CORESTATES GROUP
135 WALTER STREET, SUITE 201
NAPERVILLE, IL 60540
TEL: (224) 585-4582
CONTACT: KELLY TESKA

ENGINEER:
KIMLEY-HORN AND ASSOCIATES, INC.
2 NEVADA NORTH AVE., SUITE 300
COLORADO SPRINGS, CO 80903
TEL: (719) 453-0180
CONTACT: JESSICA MCCALLUM, P.E.

SURVEYOR:
ENGINEERING SERVICE CO.
14190 EAST EVANS AVENUE
AURORA CO, 80014
TEL: (719) 582-1270
CONTACT: CHIP BECKSTROM, P.L.S.

LANDSCAPE ARCHITECT:
KIMLEY-HORN AND ASSOCIATES, INC.
2 NEVADA NORTH AVE., SUITE 300
COLORADO SPRINGS, CO 80903
TEL: (719) 453-0180
CONTACT: JEREMY POWELL, P.L.A.

MUNICIPAL CONTACT LIST:

TOWN OF PARKER

PLANNING AND INSPECTIONS DEPARTMENT
PLANNING DIVISION
20120 E MAINSTREET
PARKER, CO 80138
TEL: (303) 805-3338
CONTACT: BRIANNA SIMON

PLANNING AND INSPECTIONS DEPARTMENT-INSPECTIONS DIVISION
20120 E MAINSTREET
PARKER, CO 80138
TEL: TBD
CONTACT: TBD

CAPITAL IMPROVEMENT PROJECTS/ENGINEERING DEPARTMENT
20120 E MAINSTREET
PARKER, CO 80138
TEL: (303) 940-9546
CONTACT: TYLER SANDT

TRANSPORTATION DEPARTMENT
COLORADO DEPARTMENT OF TRANSPORTATION
TEL: (303) 757-9356
CONTACT: RICK SOLOMON

CITY FIRE DEPARTMENT
18100 E WOODMAN DRIVE
PARKER, CO 80134
TEL: (303) 841-4627
CONTACT: DRAYTON SANDERSON

PARKER WATER AND SANITATION DISTRICT
18100 E WOODMAN DRIVE
PARKER, CO 80134
TEL: (303) 841-4627
CONTACT: DRAYTON SANDERSON

GAS COMPANY
XCEL ENERGY
1800 LARIMER STREET
DENVER, CO 80202
TEL: (800) 895-1999
CONTACT: RON JOHNSON

ELECTRIC COMPANY
IREA
5496 US HWY 85
SEDALIA, CO 80135
TEL: (720) 733-5493
CONTACT: BROOKS KAUFMAN

TELEPHONE COMPANY
CENTURY LINK
1801 CALIFORNIA STREET, SUITE 240
DENVER, CO 80202
TEL: (855) 891-4083
CONTACT: IZZY MILLER

BENCHMARK

BENCHMARK: NGS DESIGNATION C 355 (PID:KK0205); STANDARD NGS BM LOCATED 2 MI SE FROM SEDALIA, 2.0 MILES SOUTHEAST ALONG THE DENVER AND RIO GRANDE WESTERN RAILROAD FROM THE STATION AT SEDALIA, 0.5 MILE NORTHWEST OF MILEPOST 27, 32 FEET NORTH OF THE NORTH RAIL, 53 FEET SOUTH OF THE CENTER LINE OF U.S. HIGHWAY 85, 2 FEET WEST OF A WITNESS POST, SET IN THE TOP OF A CONCRETE POST WHICH PROJECTS 0.4 FOOT ABOVE THE GROUND.

BASIS OF BEARINGS

BEARINGS ARE BASED ON THE SOUTH LINE OF THE SE 1/4 OF SECTION 29, T.6S., R.66W., OF THE 6TH P.M. BEARING S89°35'27"W AND BOUNDED BY A 3 1/4" ALUMINUM CAP AT THE S 1/4 CORNER OF SECTION 29 AND A 3 1/4" ALUMINUM CAP AT THE SE CORNER OF SECTION 29. THE MONUMENTS ARE STAMPED AS SHOWN HEREON.

LEGAL DESCRIPTION

LOT 3, DOUGLAS 234, FILING NO. 6 WITHIN A PORTION OF THE SOUTHEAST 1/4 OF THE SECTION 29, TOWNSHIP 6 SOUTH, RANGE 66 WEST OF THE 6TH P.M. TOWN OF PARKER, COUNTY OF DOUGLAS, STATE OF COLORADO

DISTRICT ACCEPTANCE NOTE

- UPON COMPLETION OF SANITARY AND WATER CONSTRUCTION AND TESTING, THE DEVELOPER OR CONTRACTOR SHALL CONTACT THE DISTRICT FOR PROBATIONARY ACCEPTANCE INSPECTION. A PUNCHLIST WILL BE PROVIDED FOR THE DEVELOPER AND CONTRACTOR UPON COMPLETION OF THE INITIAL WALK-THRU AND PROBATIONARY ACCEPTANCE WILL BE ISSUED FOLLOWING COMPLETION AND ACCEPTANCE OF THE WORK OUTLINED IN THE PUNCHLIST.
- THE CONTRACTOR WILL BE HELD RESPONSIBLE FOR THE PROPER FUNCTIONING OF THE LINES FOR UP TO TWO (2) YEARS FROM THE DATE OF PROBATIONARY ACCEPTANCE OF THE LINES BY THE DISTRICT. ANY MALFUNCTION DURING THIS PERIOD OF GUARANTEE SHALL BE REMEDIED BY THE CONTRACTOR TO THE SATISFACTION OF THE DISTRICT ENGINEER AT NO EXPENSE TO THE DISTRICT.
- THE DATE OF FINAL ACCEPTANCE WILL BE INDICATED IN THE CONDITION OF THE RESPONSIBLE FOR CONTACTING THE DISTRICT FOR FINAL INSPECTION AND FINAL ACCEPTANCE.

FIRE CODE REVIEW BLOCK:

ALL FIRE HYDRANTS SHALL BE INSTALLED ACCORDING TO WATER UTILITY STANDARDS. THE NUMBER AND LOCATIONS OF THE FIRE HYDRANTS AS SHOWN ON THE OVERALL UTILITY PLAN ARE CORRECT AS SPECIFIED BY THE TOWN OF PARKER, COMMUNITY DEVELOPMENT DEPARTMENT.

FIRE CODE OFFICIAL OR DESIGNATED REPRESENTATIVE _____ DATE _____

(NOTE - UNDERGROUND FIRE LINE (UFL) SUBMITTAL DOCUMENTS MUCH MEET THE REQUIREMENTS OF NFPA 24 WHEN SUBMITTING FOR REVIEW.)

THE DISTRICT INSPECTOR MUST BE NOTIFIED AT LEAST 48 HOURS PRIOR TO START OF CONSTRUCTION. CALL PARKER WATER AND SANITATION DISTRICT AT 303-841-4627. THE DISTRICT WILL PROVIDE PERIODIC INSPECTIONS OF THE WORK. 24 HOUR NOTICE TO THE INSPECTOR IS REQUIRED FOR SCHEDULING INSPECTIONS. ANY WORK ACCOMPLISHED WITHOUT THE APPROVAL OF THE INSPECTOR WILL BE SUBJECT TO REJECTION.

REVIEWED FOR CONFORMANCE TO PARKER WATER AND SANITATION DISTRICT STANDARDS.

BY: _____ (DISTRICT REPRESENTATIVE)

DATE: _____

APPROVED FOR CONSTRUCTION:
PARKER WATER AND SANITATION DISTRICT

BY: _____ (DISTRICT ENGINEER)

DATE: _____

TITLE	UTILITY PLANS	DRAWN BY	JJM	STD ISSUE DATE	07/1/21	REVIEWED BY	JRH	DATE ISSUED	07/1/21	DESCRIPTION	COVER SHEET	SITE ID	0050785	LOT 3, DOUGLAS 234 FILING NO. 6	REV	DATE	DESCRIPTION	BY
	C2.0																	



PREPARED BY:
FOR REVIEW ONLY
NOT FOR
CONSTRUCTION
Kimley-Horn and Associates, Inc.

McDonald's USA, LLC

These drawings and specifications are the confidential and proprietary property of McDonald's USA, LLC and shall not be copied or reproduced without written authorization. The contract documents were prepared in accordance with the contract documents for the project. Use of these drawings for reference or example on another project requires the approval of the engineer of record. Use of these drawings on any other project without the approval of the engineer of record is not authorized.



INSPECTION POLICY:

1. ALL SERVICE INSPECTIONS MUST BE SCHEDULED AT LEAST 24 HOURS IN ADVANCE OF THE REQUESTED INSPECTION.
2. SERVICE INSPECTIONS WILL OCCUR BETWEEN 1:00 P.M. AND 3:00 P.M. SPECIFIC INSPECTION TIMES ARE NOT AVAILABLE.
3. IF THE CONTRACTOR IS NOT READY FOR INSPECTION WHEN THE INSPECTOR ARRIVES AT THE SITE OR SERVICE FAILS, A RE-INSPECTION WILL HAVE TO BE SCHEDULED IN ACCORDANCE WITH NOTES 1 AND 2 ABOVE AND A RE-INSPECTION FEE CHARGED.
4. SHOULD THE SERVICE LINES BE DAMAGED BY LATER CONSTRUCTION, AN INSPECTION OF THE REPAIR WILL BE REQUIRED IN ACCORDANCE WITH NOTES 1 AND 2 ABOVE.
5. THE CONTRACTOR SHALL LEAVE ALL PIPE AND FITTINGS EXPOSED FOR THE INSPECTOR TO OBSERVE. INSPECTORS WILL NOT ENTER ANY EXCAVATIONS TO CHECK MATERIALS. THE TOP LAYER OF BEDDING CAN BE ADDED AFTER THE INSPECTION HAS BEEN COMPLETED.
6. ALL EXCAVATIONS SHALL BE IN ACCORDANCE WITH OSHA STANDARDS.
7. LOTS WITHOUT BUILDING ADDRESSES BEFORE DISTRICT INSPECTION OR METER SET WILL FAIL AUTOMATICALLY.
8. CONTRACTOR MUST BE PRESENT AT TIME OF INSPECTION. UNLESS COORDINATED WITH DISTRICT INSPECTOR.

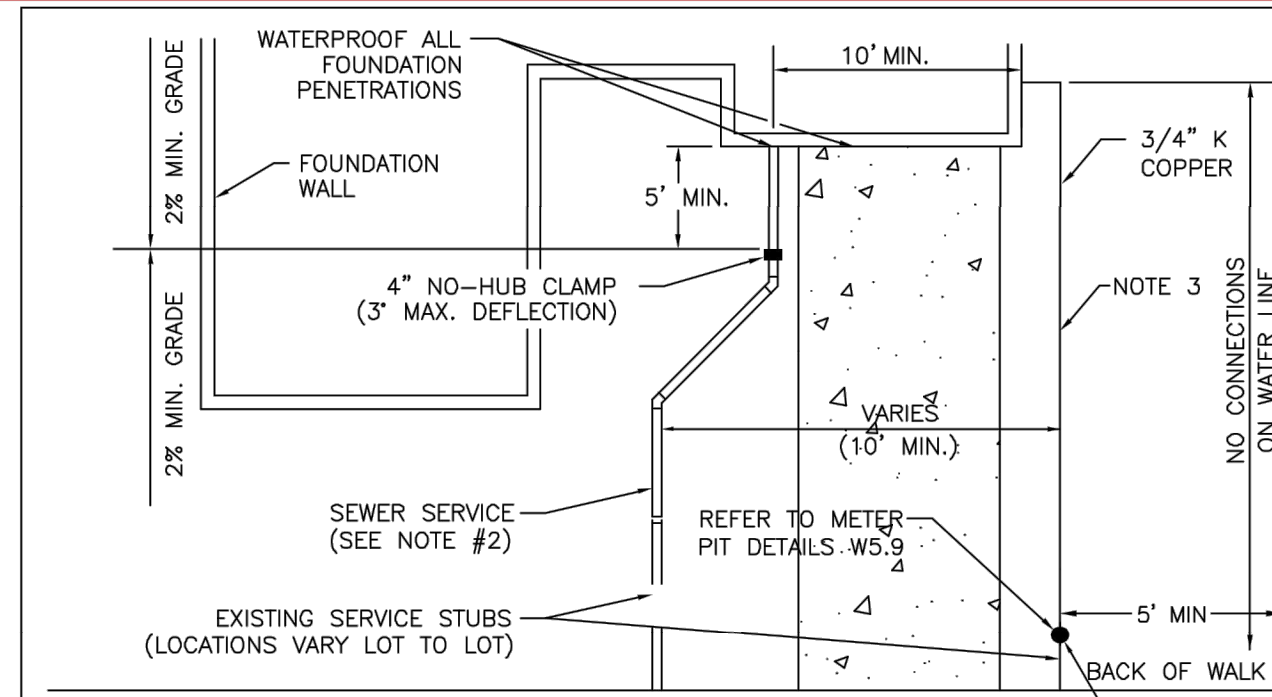
INSTALLATION NOTES:

- WATER**
1. ACCEPTABLE PIPE MATERIALS SHALL BE K-COPPER TUBING. (3/4" MIN.)
 2. APPROVED BEDDING TO BE SQUEEGEE.
 3. ONLY ONE COUPLING WILL BE ALLOWED BETWEEN THE STUB-IN AND BUILDING. COMPRESSION COUPLINGS WILL NOT BE ALLOWED ON NEW CONSTRUCTION. SILVER SOLDERED JOINTS MUST BE USED ON SERVICES LARGER THAN 3/4". SILVER SOLDERED JOINTS MUST BE INSPECTED BY PWSO PRIOR TO BURIAL. FLARED COUPLINGS WILL BE ALLOWED ON ALL SERVICES 3/4" AND SMALLER.
 4. A WATER SERVICE WHICH CROSSES A SEWER SERVICE CAN DO SO ONLY AT A 45-90° ANGLE. WATER SERVICES SHALL BE LOCATED A MINIMUM OF 18" ABOVE SEWER SERVICE.
 5. WATER SERVICE FOUNDATION PENETRATIONS SHALL BE WATERPROOFED USING MASTIC OR OTHER APPROVED METHOD. CRAWL SPACE REQUIRES CONTINUOUS COPPER WITH A 1" BURY.
 6. CURB STOP MUST BE PLUMB AND CENTERED OVER THE NUT. IT SHOULD BE STRAPPED TO THE METER PIT (RESIDENTIAL INSTALLATIONS) OR CENTERED OVER THE EASEMENT LINE (COMMERCIAL INSTALLATIONS). THE ASSEMBLY MUST BE AT OR SLIGHTLY ABOVE FINISHED GRADE.
 7. MOVED CURB BOXES MUST BE INSPECTED BY PWSO PRIOR TO BURIAL.
 8. WATERLINE MUST BE ATTACHED TO A SUPPORT BOARD THAT IS MOUNTED TO THE WALL.
 9. NO VOIDS ALLOWED UNDER WATERLINES FROM STOP BOX TO FOUNDATION.
 10. CURBSTOP BOXES AND METER PITS CANNOT BE IN DRIVEWAYS.
 11. ONLY 3/4" (JUMPER) PIPES (RESIDENCES) ARE ALLOWED. (JUMPER) PIPES WILL BE REMOVED PRIOR TO METER SET DATE.
 12. ALL SERVICES WILL BE PERMANENTLY MARKED ON CURB FACE AS FOLLOWS:
 "X" FOR SANITARY SEWER SERVICE
 "W" FOR WATER SERVICES
 13. NO SPLICES OR FLARED COUPLINGS ALLOWED ON SERVICES LARGER THAN 3/4". SILVER SOLDERED JOINTS MUST BE USED IN MOVING STOPBOXES ON SERVICES LARGER THAN 3/4". SILVER SOLDERED JOINTS MUST BE INSPECTED BY PWSO PRIOR TO BURIAL. FLARED COUPLINGS WILL BE ALLOWED ON ALL SERVICES 3/4" AND SMALLER.

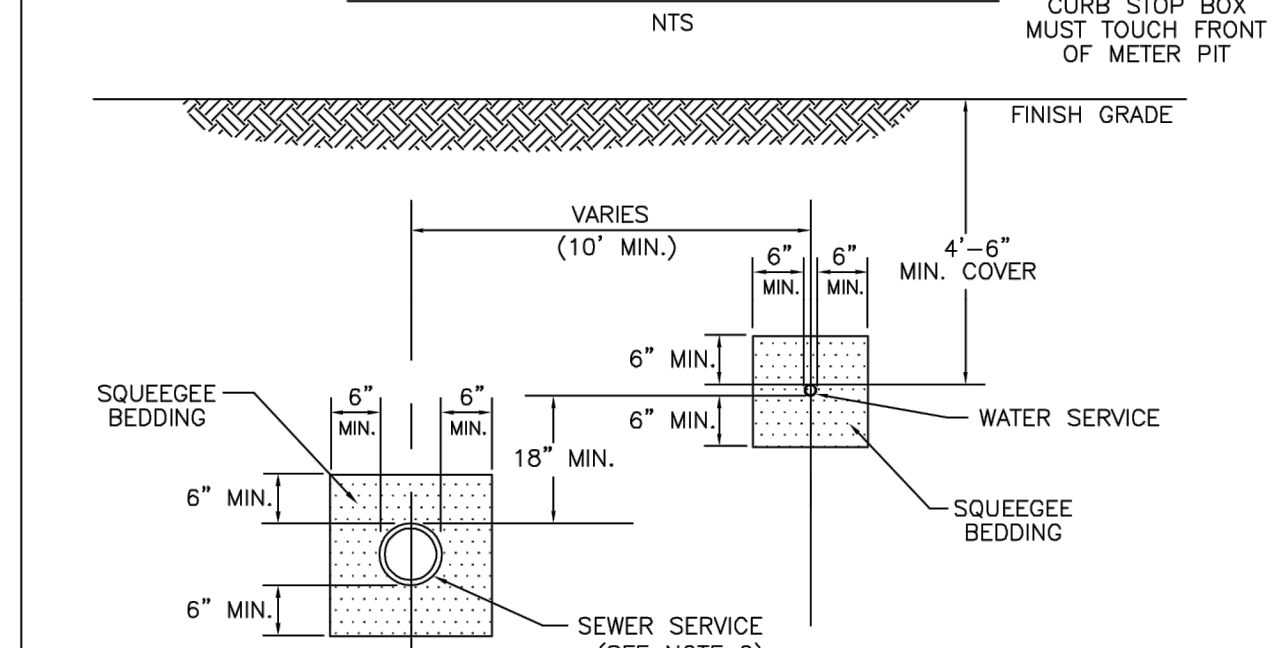
PARKER WATER & SANITATION DISTRICT	
DISTRICT POLICIES & INSTALLATION NOTES FOR WATER SERVICES	
SCALE: NONE	DATE: 2/96
APPROVED: NONE	5/98 10/16
PVR	2/00 12/07
DIRECTOR OF ENGINEERING	1/16

2016 REVISION

SHEET W1.1



TYPICAL SERVICES PLAN VIEW



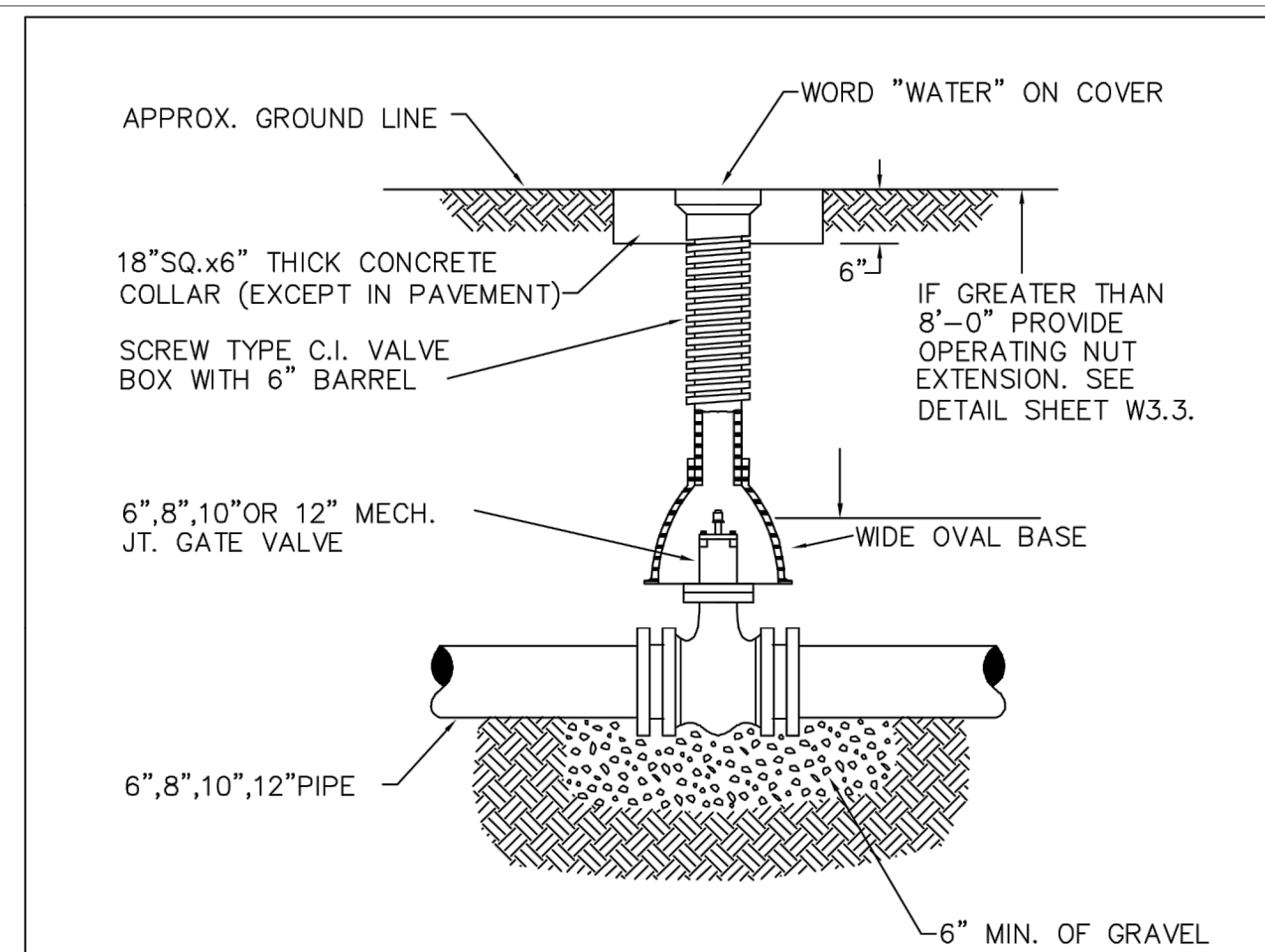
TYPICAL SERVICES SECTION

NOTE:
 1. SEE SHEET W1.1 FOR DISTRICT POLICIES AND INSTALLATION NOTES.
 2. REFER TO SEWER SERVICES DETAIL SHEET S1.2.
 3. 4" PVC SLEEVES REQUIRED FOR SERVICE LINES UNDER CONCRETE SURFACE.

PARKER WATER & SANITATION DISTRICT	
TYPICAL WATER SERVICES	
SCALE: NONE	DATE: 2/96
APPROVED: NONE	1/04 10/16
PVR	06/05 12/07
DIRECTOR OF ENGINEERING	1/16

2016 REVISION

SHEET W1.2



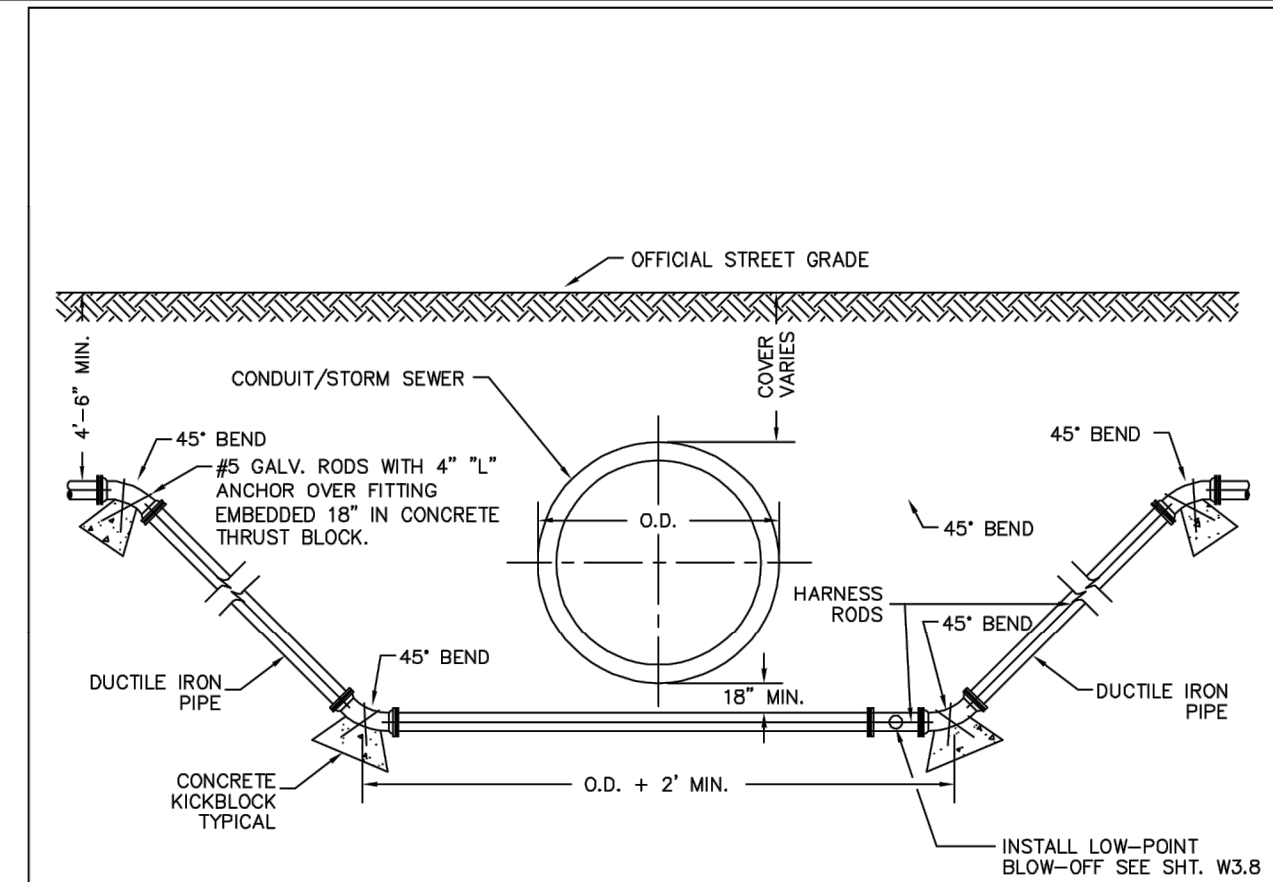
6-INCH VALVE BOXES

- NOTES:
 1. ALL C.I. SHALL BE WRAPPED WITH 8 MIL. MIN. THICKNESS POLYETHYLENE.
 2. VALVE NUT SHALL BE CENTERED.
 3. VALVE BOX SHALL BE PLUMB.
 4. SEE MATERIAL SPECIFICATIONS FOR VALVE BOX WITH GREATER THAN BURIED DEPTH OF 4.5 FT.

PARKER WATER & SANITATION DISTRICT	
VALVE BOX DETAIL	
SCALE: NONE	DATE: 2/96
APPROVED: NONE	5/98 10/16
PVR	6/99 12/07
DIRECTOR OF ENGINEERING	1/16

2016 REVISION

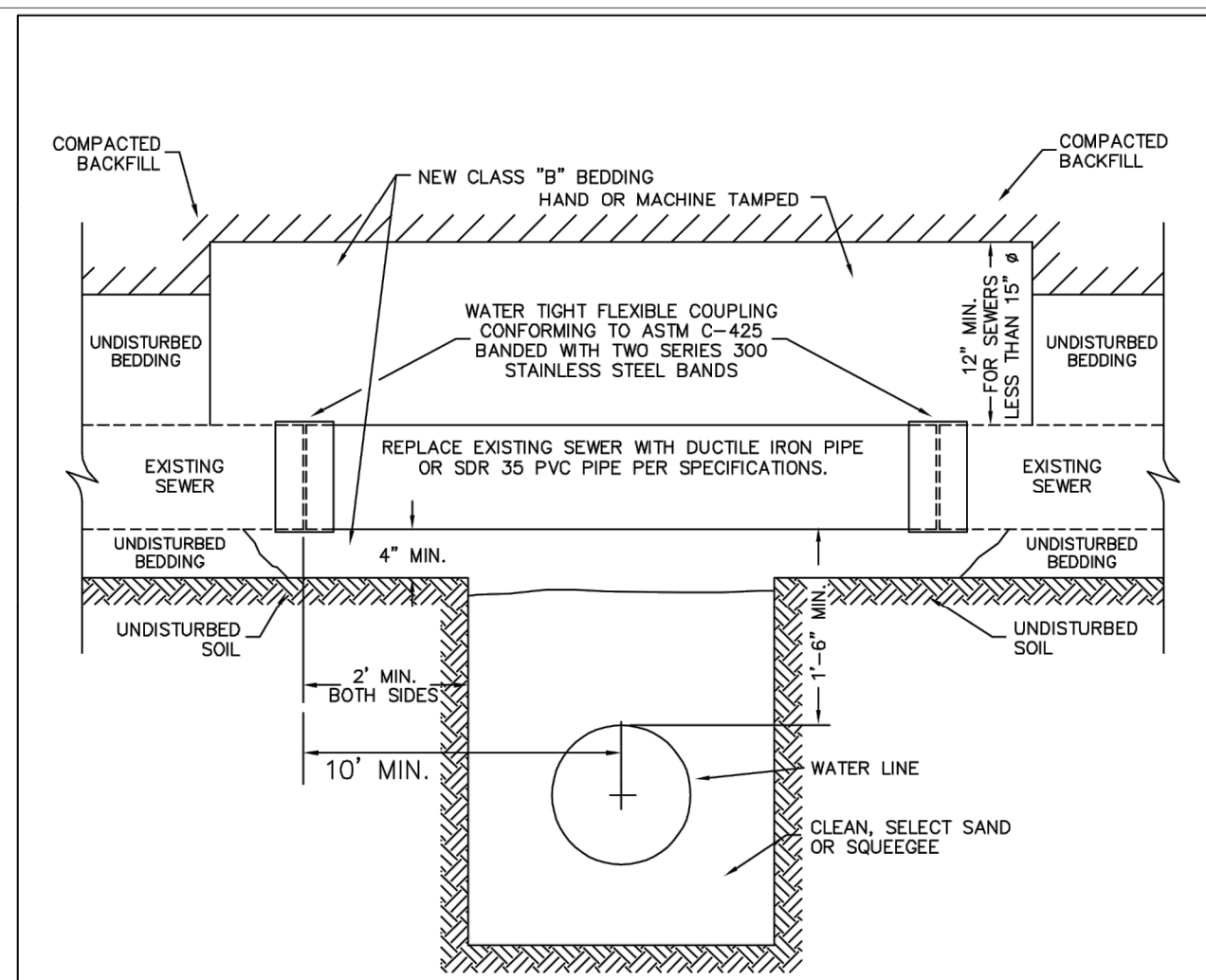
SHEET W3.10



PARKER WATER & SANITATION DISTRICT	
CONDUIT OR STORM SEWER CROSSING	
SCALE: NONE	DATE: 2/96
APPROVED: NONE	5/98 10/16
PVR	2/00 12/07
DIRECTOR OF ENGINEERING	1/16

2016 REVISION

SHEET W4.6

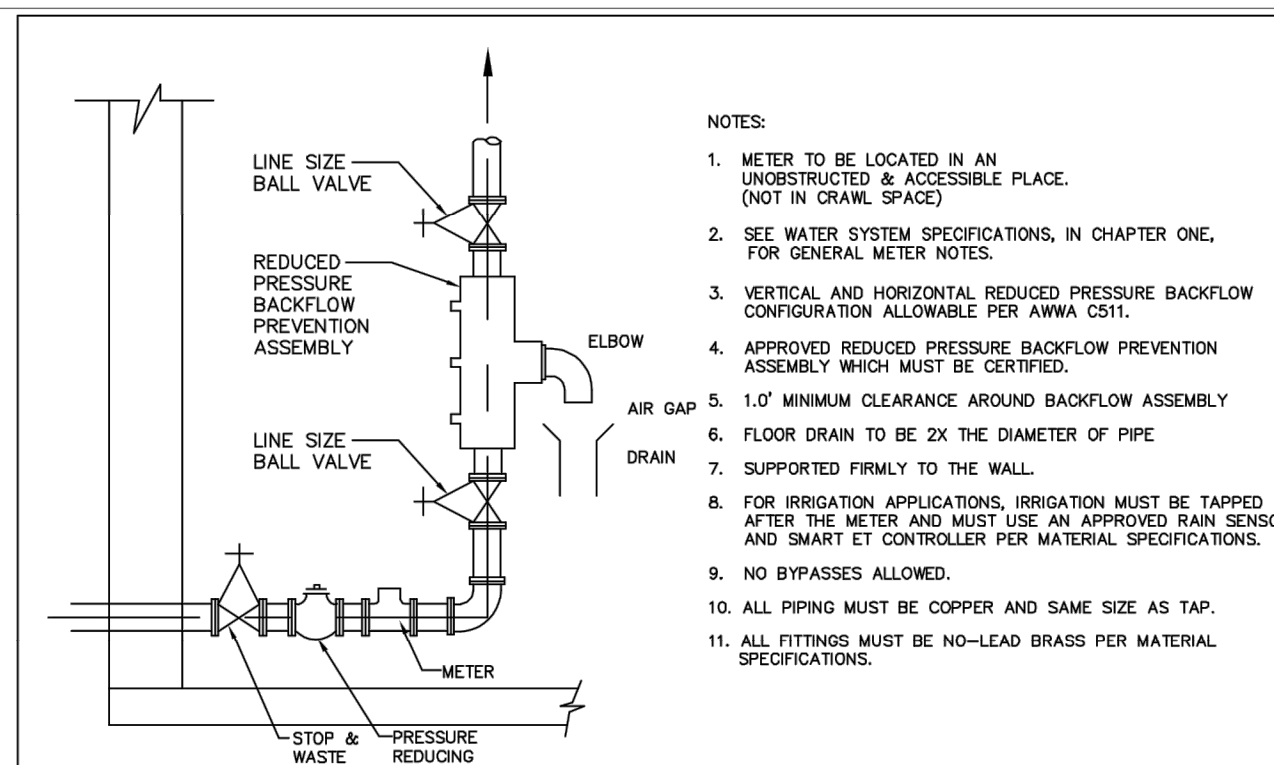


PARKER WATER & SANITATION DISTRICT
 CROSSING STORM & SANITARY SEWERS

PARKER WATER & SANITATION DISTRICT	
CROSSING STORM & SANITARY SEWERS	
SCALE: NONE	DATE: 2/96
APPROVED: NONE	1/16 10/16
PVR	06/05 12/07
DIRECTOR OF ENGINEERING	1/16

2016 REVISION

SHEET W4.7

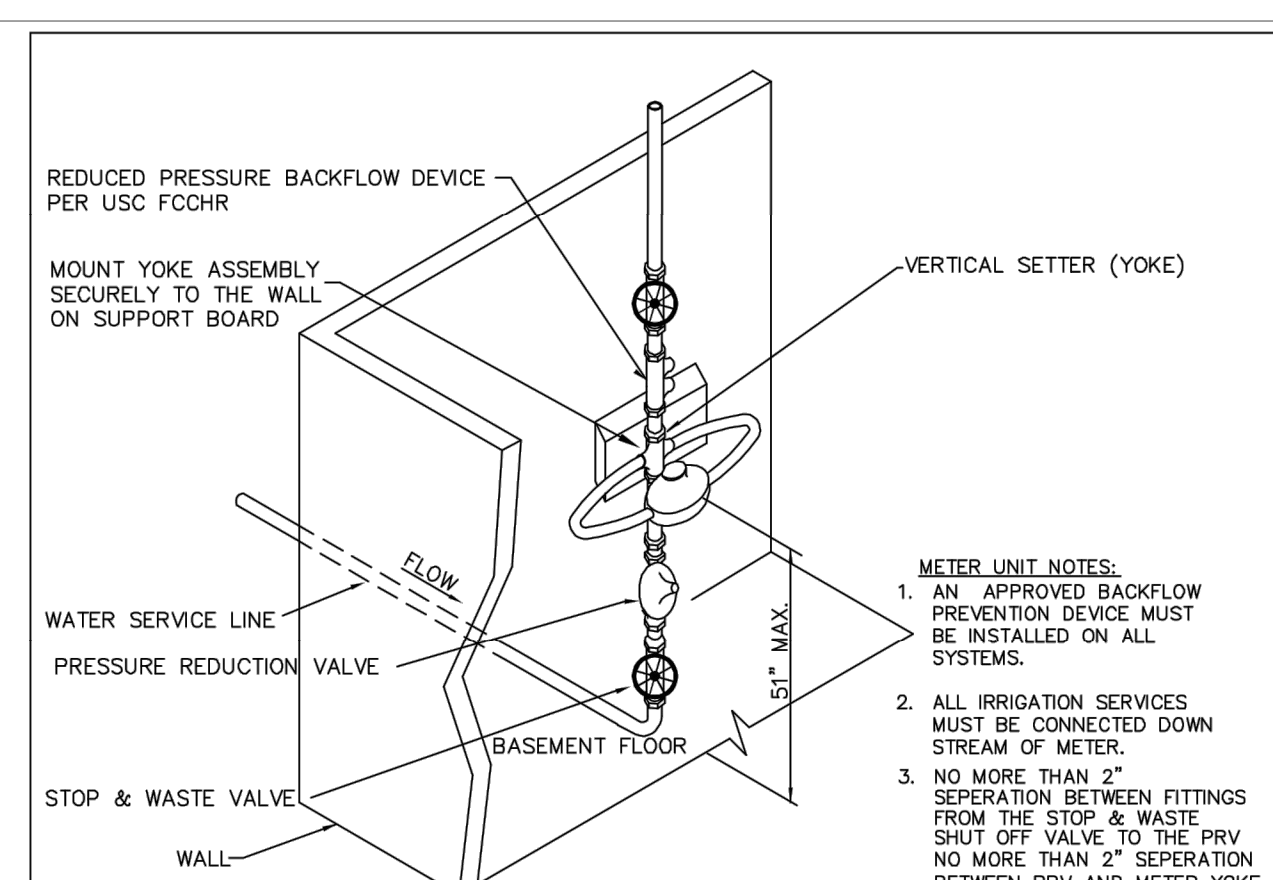


PARKER WATER & SANITATION DISTRICT
 INSIDE COMMERCIAL METER INSTALLATION FOR 6" & SMALLER PIPE

PARKER WATER & SANITATION DISTRICT	
INSIDE COMMERCIAL METER INSTALLATION FOR 6" & SMALLER PIPE	
SCALE: NONE	DATE: 2/96
APPROVED: NONE	5/98 1/16
PVR	2/00 10/16
DIRECTOR OF ENGINEERING	4/01 06/05
	02/02

2016 REVISION

SHEET W5.8



PARKER WATER & SANITATION DISTRICT
 SERVICE LINE, STOP BOX & INSIDE METER SETTING (COMMERCIAL ONLY)

PARKER WATER & SANITATION DISTRICT	
SERVICE LINE, STOP BOX & INSIDE METER SETTING (COMMERCIAL ONLY)	
SCALE: NONE	DATE: 2/96
APPROVED: PVR	* ADDITION 07/04 10/16
DIRECTOR OF ENGINEERING	06/05 1/16

2016 REVISION

SHEET W5.9

TITLE	UTILITY PLANS	DESCRIPTION	PWSO DETAILS
DATE	07/1/21	DATE	07/1/21
BY		DATE	

Kimley»Horn

PRELIMINARY FOR REVIEW ONLY NOT FOR CONSTRUCTION

PREPARED FOR: **McDonald's USA, LLC**
 These drawings and specifications are the confidential and proprietary property of McDonald's USA, LLC and shall not be copied or reproduced without written authorization. The contract documents were prepared by Kimley-Horn and Associates, Inc. in accordance with the contract documents for use on a different site or at a later time. Use of these drawings for reference or example on another project requires the contract documents for reuse on another project is not authorized.

DRAWN BY	JJM	DATE	07/1/21
STD ISSUE		DATE	07/1/21
REVIEWED BY	JRH	DATE	07/1/21
DATE ISSUED		DATE	07/1/21

SITE ADDRESS: LOT 3, DOUGLAS 234 FLNG NO. 6

INSPECTION POLICY:

1. ALL SERVICE INSPECTIONS MUST BE SCHEDULED WITH THE DISTRICT OFFICE AT LEAST 24 HOURS IN ADVANCE OF THE REQUESTED INSPECTION.
2. IF THE CONTRACTOR IS NOT READY FOR INSPECTION WHEN THE INSPECTOR ARRIVES AT THE SITE, A RE-INSPECTION WILL HAVE TO BE SCHEDULED IN ACCORDANCE WITH NOTE 1 ABOVE AND A RE-INSPECTION FEE CHARGED.
3. SHOULD THE SERVICE LINES BE DAMAGED BY LATER CONSTRUCTION, AN INSPECTION OF THE REPAIR WILL BE REQUIRED IN ACCORDANCE WITH NOTES 1 AND 2 ABOVE.
4. THE CONTRACTOR SHALL LEAVE ALL PIPE AND FITTINGS EXPOSED FOR THE INSPECTOR TO OBSERVE. INSPECTORS WILL NOT ENTER ANY EXCAVATIONS TO CHECK MATERIALS. THE TOP LAYER OF BEDDING CAN BE ADDED AFTER THE INSPECTION HAS BEEN COMPLETED.
5. ALL EXCAVATIONS SHALL BE IN ACCORDANCE WITH OSHA STANDARDS.
6. LOTS WITHOUT BUILDING ADDRESSES OR LOT AND BLOCK NUMBERS BEFORE DISTRICT INSPECTION OR METER SET WILL FAIL AUTOMATICALLY.
7. CONTRACTOR MUST BE PRESENT AT TIME OF INSPECTION UNLESS COORDINATED WITH DISTRICT INSPECTOR.

INSTALLATION NOTES:

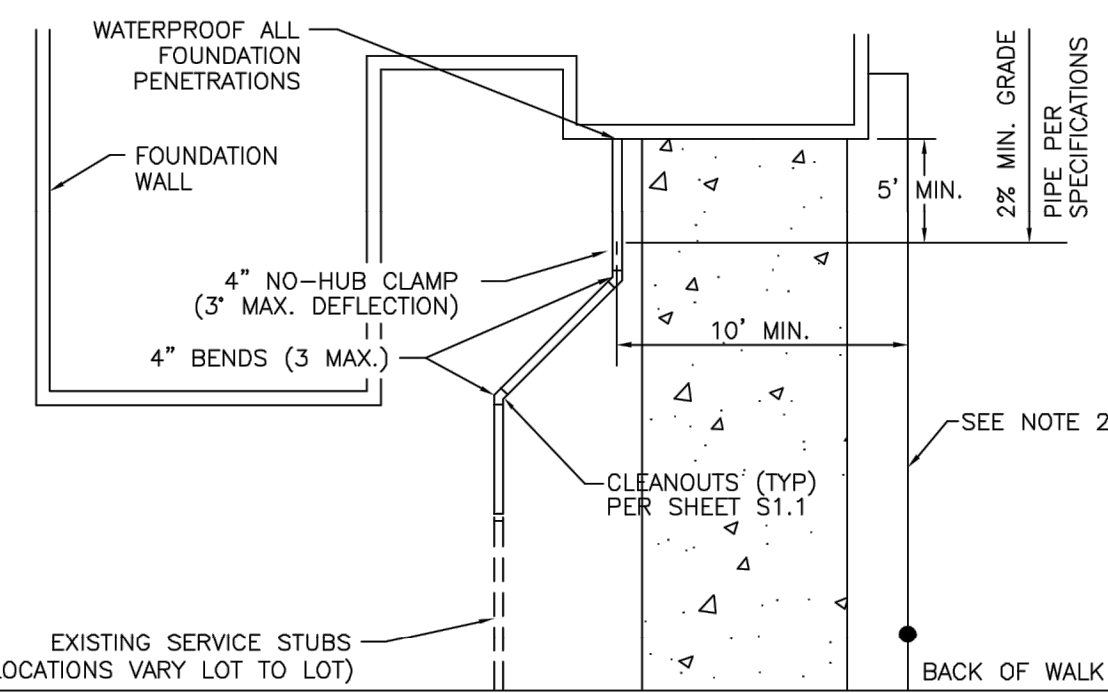
- SEWER**
1. ACCEPTABLE PIPE MATERIALS ARE TO BE SDR 35 PVC PIPE, ABS PIPE AND PVC SCHD 40 PIPE. APPROVED BEDDING IS TO BE SQUEEGEE.
 2. NO-HUB CLAMPS SHALL BE USED TO JOIN 2 MALE PIPE ENDS WITH A MAXIMUM DEFLECTION OF 3".
 3. MINIMUM GRADE SHALL BE 2%.
 4. INSTALLATION SHALL INCLUDE NO MORE THAN 3 BENDS. 90° BENDS ARE NOT ALLOWED. SOLVENT WELDED PIPE WILL NOT BE ALLOWED.
 5. CLEAN-OUTS SHALL BE INSTALLED AT 100' INTERVALS AND EVERY CHANGE IN DIRECTION. CLEAN-OUTS ARE NOT REQUIRED FOR SERVICES LESS THAN 100' UNLESS THERE ARE CHANGES IN DIRECTION. PROVIDE DUAL CLEAN-OUT WITHIN 5 FEET OF FOUNDATION.
 6. STRESSING OF THE PIPE BETWEEN FITTINGS WILL NOT BE ALLOWED.
 7. SEWER SERVICE LINE SHALL NOT BE LOCATED UNDER CONCRETE SURFACE.
 8. ALL SERVICES WILL BE PERMANENTLY MARKED ON CURB FACE AS FOLLOWS:
"X" FOR SANITARY SEWER SERVICE
"V" FOR WATER SERVICES

**PARKER WATER & SANITATION DISTRICT
DISTRICT POLICIES & INSTALLATION
NOTES FOR SEWER SERVICES**

SCALE: NONE	DATE: 2/96
APPROVED: PVR	2/00 01/02 1/08 10/16
DIRECTOR OF ENGINEERING	

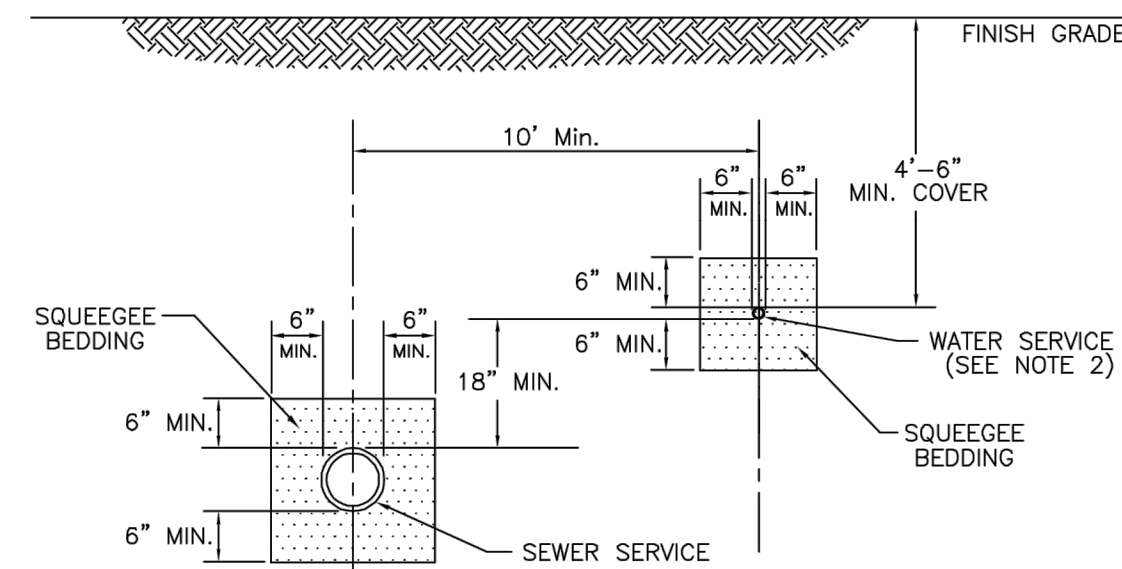
2016 REVISION

SHEET S1.1



TYPICAL SERVICES PLAN VIEW

NTS



TYPICAL SERVICES SECTION

NTS

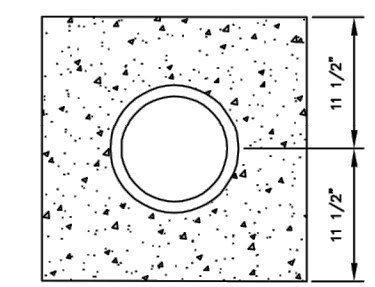
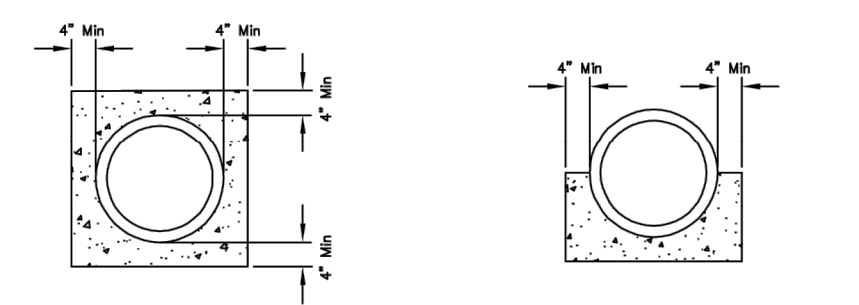
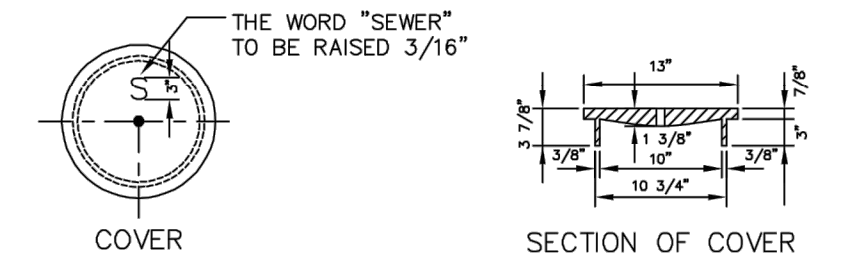
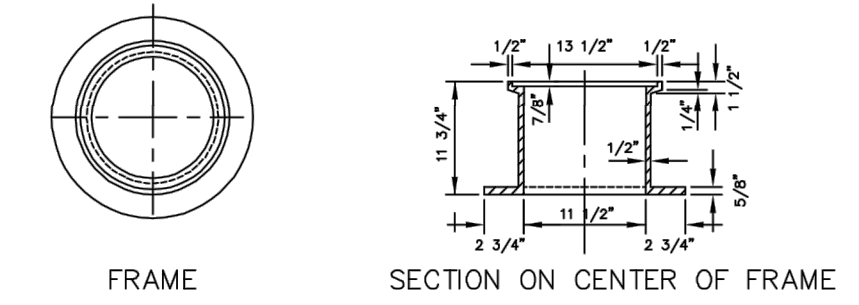
- NOTE:**
1. SEE SHEET S1.1 FOR DISTRICT POLICIES AND INSTALLATION NOTES.
 2. TYPICAL WATER SERVICES SHOWN ON SHEET W1.2 IN WATER DETAILS.

**PARKER WATER & SANITATION DISTRICT
TYPICAL SEWER SERVICES**

SCALE: NONE	DATE: 2/96
APPROVED: PVR	2/00 01/02 01/16 10/16
DIRECTOR OF ENGINEERING	

2016 REVISION

SHEET S1.2

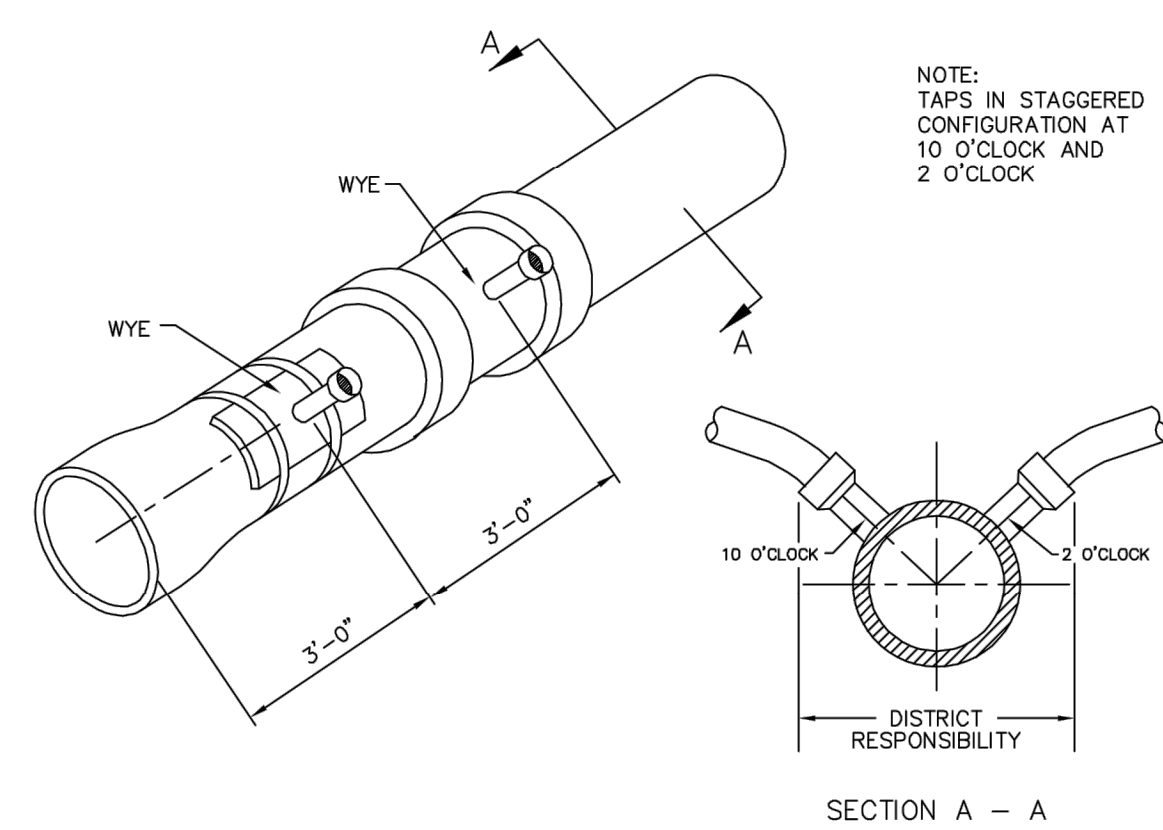


**PARKER WATER & SANITATION DISTRICT
IN-LINE CLEANOUT SECTIONS**

SCALE: NONE	DATE: 2/96
APPROVED: PVR	2/00 1/08 10/16
DIRECTOR OF ENGINEERING	

2016 REVISION

SHEET S4.12



NOTE: TAPS IN STAGGERED CONFIGURATION AT 10 O'CLOCK AND 2 O'CLOCK

SECTION A - A

DISTRICT RESPONSIBILITY

Sewer service connections shall be positioned at either the 2 o'clock or the 10 o'clock position on the circumference of the sewer main. On new installations, tee or wye fittings shall be used. When tapping into existing sewer main, a saddle connection and approved coring method shall be used. The minimum distance between service connections made along the pipe shall be 3 feet. The minimum distance from either the bell or spigot end of a pipe shall be 3 feet. The minimum distance from the center of a manhole to a service connection shall be either 7 feet or the transition point from the manhole trench to the normal pipe trench, whichever is greater. A maximum of 4 sewer service connections shall be allowed per 20 foot length of pipe. In all cases, a specific soils investigation should be conducted to assure that the external loading will be within allowable limits regardless of the number of taps involved.

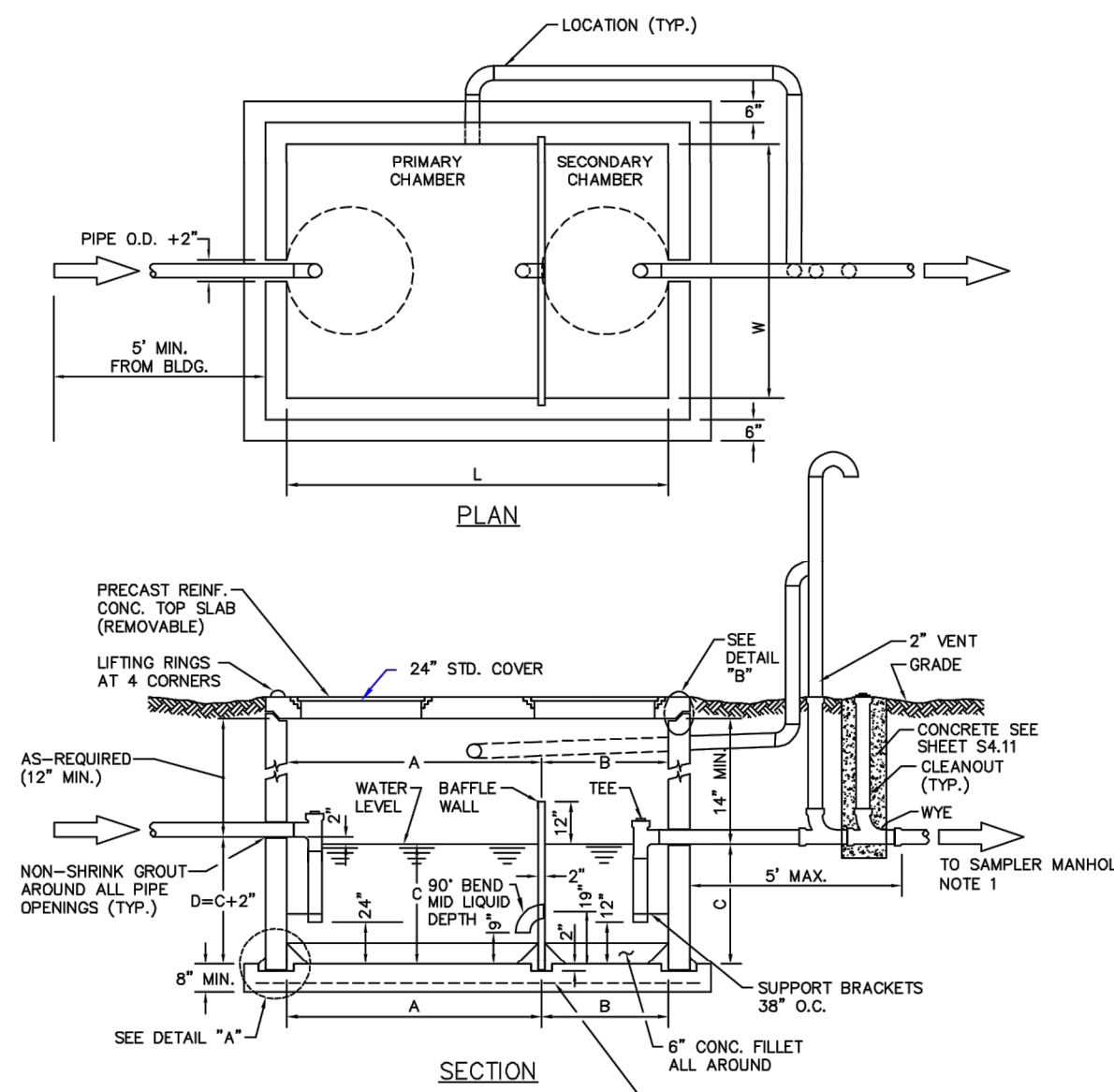
DOMESTIC SEWER TAPPING DETAIL

**PARKER WATER & SANITATION DISTRICT
DOMESTIC SEWER TAPPING DETAIL**

SCALE: NONE	DATE: 2/96
APPROVED: PVR	4/01 1/08 1/16 10/16
DIRECTOR OF ENGINEERING	

2016 REVISION

SHEET S4.13



CAPACITY CHART

TOTAL WATER CAP. APPROX. (GALLONS)	GREASE CAP. APPROX. (CU. FT.)	DIMENSIONS (INCHES)			
		W	L	A	B
1190	61	72	96	32	40
1500	84	72	144	96	48
1840	103	72	144	96	48
2080	117	72	144	96	48
2560	150	72	144	96	48
3040	183	72	144	96	48
3280	202	72	144	96	48
3520	216	72	144	96	48

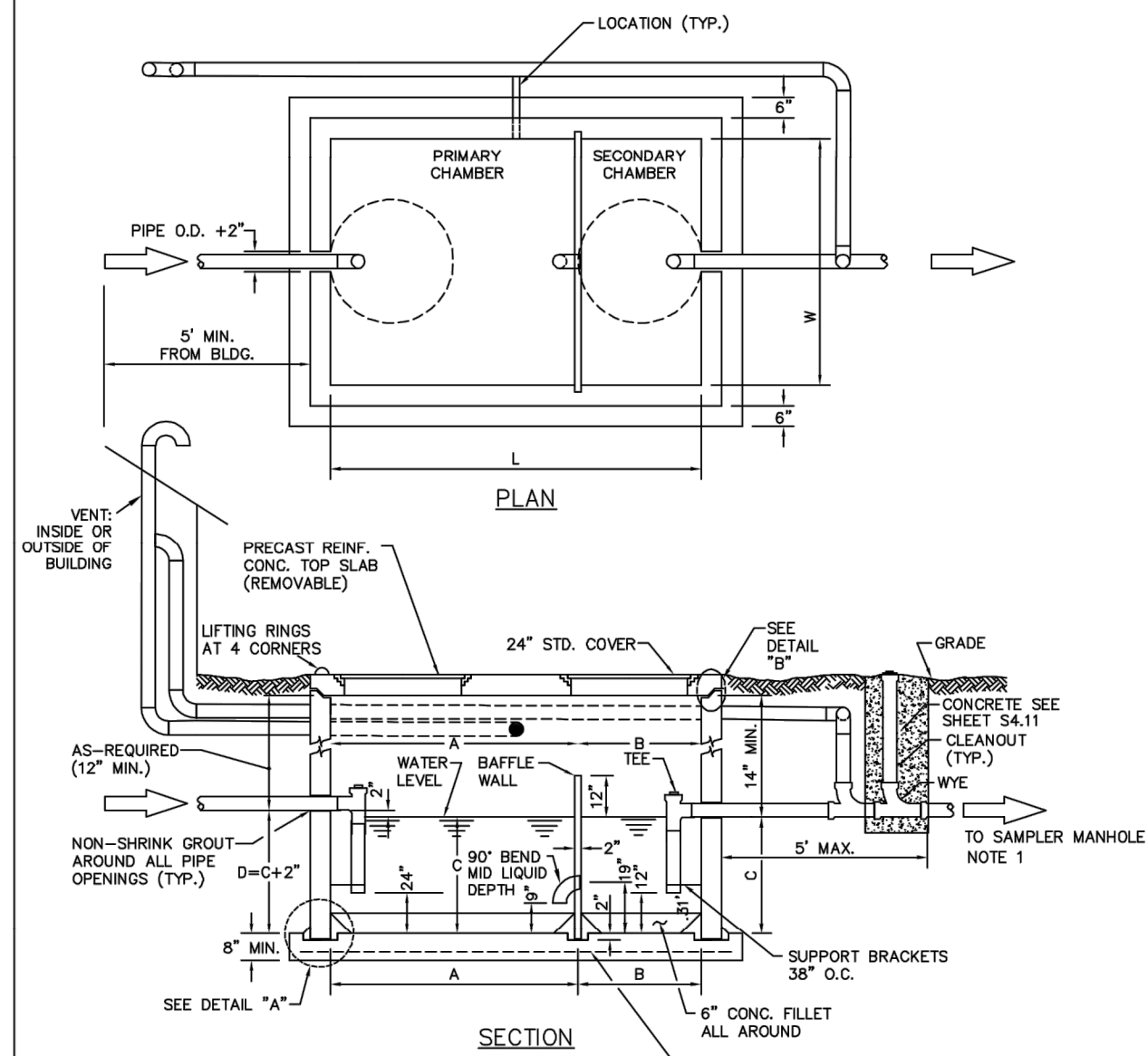
TOP OF VAULT BELOW FINISHED GRADE OR AT GRADE IF BELOW GRADE RING AND COVER SHALL BE ADJUSTED TO FINAL GRADE USING A MINIMUM OF 4" GRADE RINGS AND A MAXIMUM OF 12" GRADE RINGS. FOR DEPTHS OVER 12" A MAN HOLE BARREL SECTION WILL BE REQUIRED WITH A FLAT TOP FOR DEPTHS OF 4' OR LESS AND AN ECCENTRIC CONE TOP FOR DEPTHS GREATER THAN 4'

**PARKER WATER & SANITATION DISTRICT
COMMERCIAL GREASE INTERCEPTOR**

SCALE: NONE	DATE: 2/96
APPROVED: PVR	2/00 01/02 01/16 10/16
DIRECTOR OF ENGINEERING	

2016 REVISION

SHEET S5.1



CAPACITY CHART

TOTAL WATER CAP. APPROX. (GALLONS)	GREASE CAP. APPROX. (CU. FT.)	DIMENSIONS (INCHES)			
		W	L	A	B
1190	61	72	96	32	40
1500	84	72	144	96	48
1840	103	72	144	96	48
2080	117	72	144	96	48
2560	150	72	144	96	48
3040	183	72	144	96	48
3280	202	72	144	96	48
3520	216	72	144	96	48

TOP OF VAULT BELOW FINISHED GRADE OR AT GRADE IF BELOW GRADE RING AND COVER SHALL BE ADJUSTED TO FINAL GRADE USING A MINIMUM OF 4" GRADE RINGS AND A MAXIMUM OF 12" GRADE RINGS. FOR DEPTHS OVER 12" A MAN HOLE BARREL SECTION WILL BE REQUIRED WITH A FLAT TOP FOR DEPTHS OF 4' OR LESS AND AN ECCENTRIC CONE TOP FOR DEPTHS GREATER THAN 4'

**PARKER WATER & SANITATION DISTRICT
COMMERCIAL GREASE INTERCEPTOR**

SCALE: NONE	DATE: 2/96
APPROVED: PVR	01/02 01/16 10/16
DIRECTOR OF ENGINEERING	

2016 REVISION

SHEET S5.2

UTILITY PLANS

DESCRIPTION: PWSH DETAILS

PREPARED BY: McDonald's USA, LLC

FOR REVIEW ONLY NOT FOR CONSTRUCTION

Kimley-Horn and Associates, Inc.

DATE: 07/1/21

REV: 07/1/21

DATE: 07/1/21

DESCRIPTION: 0050785 LOT 3, DOUGLAS 234 FILING NO. 6

C2.4