

PARKER WATER AND SANITATION GENERAL NOTES

- ALL MATERIALS AND WORKMANSHIP SHALL BE IN CONFORMANCE WITH THE PWSO ENGINEERING STANDARDS AND SPECIFICATIONS, LATEST VERSION.
- THE CONTRACTOR SHALL CONTACT ALL APPROPRIATE UTILITY COMPANIES AND THE TOWN OF PARKER, DOUGLAS COUNTY AND OTHER NEIGHBORING CITIES AND TOWNS PRIOR TO THE BEGINNING OF ANY CONSTRUCTION. CONTRACTOR SHALL BE RESPONSIBLE FOR LOCATING AND EXISTING UTILITY (INCLUDING DEPTHS) WHICH MAY CONFLICT WITH THE PROPOSED CONSTRUCTION. ALL EXISTING UTILITIES SHALL BE PROTECTED FROM DAMAGE BY THE CONTRACTOR. DAMAGED UTILITIES SHALL BE REPAIRED BY THE CONTRACTOR AT HIS OWN EXPENSE.
- ALL ITEMS SHOWN ON THE PLANS AS EXISTING ARE SHOWN IN APPROXIMATE LOCATIONS ONLY. THE ACTUAL LOCATIONS MAY VARY FROM THE PLANS, ESPECIALLY IN THE CASE OF UNDERGROUND UTILITIES. WHENEVER THE CONTRACTOR DISCOVERS A DISCREPANCY IN THE LOCATIONS CONTACT THE PWSO IMMEDIATELY.
- PWSO ENGINEER AND OTHER APPROVING AGENCIES ARE TO BE NOTIFIED 48 HOURS PRIOR TO CONSTRUCTION.
- THE CONTRACTOR SHALL OBTAIN, AT HIS EXPENSE, ALL PERMITS NECESSARY TO PERFORM THE PROPOSED WORK.
- ALL CONCRETE SHALL BE A MINIMUM OF CLASS A, 6 SACK, TYPE II, 3000-POUND COMPRESSION STRENGTH.
- THE DESIGN ENGINEER SHALL SUBMIT ONE (1) SET OF AS-BUILT DRAWINGS AND ELECTRONIC FILES TO THE DISTRICT ENGINEER FOR APPROVAL BY DISTRICT. AFTER APPROVAL HAS BEEN GRANTED BY THE DISTRICT ENGINEER, FULL SIZE PRINTS SHALL BE TRANSMITTED TO THE PWSO OFFICE.
- NO WORK SHALL BE BACKFILLED UNTIL THE CONSTRUCTION HAS BEEN INSPECTED AND APPROVED FOR BACKFILLING BY THE DISTRICT ENGINEER OR REPRESENTATIVE OF THE DISTRICT ENGINEER. ALL BACKFILL MATERIAL SHALL BE COMPACTED TO 95% STANDARD PROCTOR DENSITY. COMPACTION TESTS MUST BE SUBMITTED TO DISTRICT ENGINEER PRIOR TO PROBATIONARY ACCEPTANCE.
- TRENCHES SHALL BE EXCAVATED AND THE PIPE EXPOSED FOR THE INSPECTION AT ANY LOCATION ON THE PROJECT IF SO ORDERED BY THE INSPECTOR.
- THE CONTRACTOR WILL BE HELD RESPONSIBLE FOR THE PROPER FUNCTIONING OF LINES (WATER AND SEWER) FOR UP TO TWO (2) YEARS FROM THE DATE OF PROBATIONARY ACCEPTANCE OF THE LINES BY THE DISTRICT. ANY MALFUNCTION DURING THIS PERIOD OF GUARANTEE SHALL BE REMEDIED BY THE CONTRACTOR TO THE SATISFACTION OF THE DISTRICT ENGINEER AT NO EXPENSE TO THE DISTRICT.
- SURFACE GRADES ARE TO BE WITHIN PLUS OR MINUS ONE FOOT OF FINISHED GRADE AND VERIFICATION OF COMPACTION RESULTS OBTAINED PRIOR TO THE INSTALLATION OF WATER AND SEWER LINES. RESULTS MUST BE SUBMITTED TO THE DISTRICT ENGINEER.
- ALL SERVICES WILL BE PERMANENTLY MARKED ON CURB FACE AS FOLLOWS:
 "X" FOR SANITARY SEWER SERVICES
 "V" FOR WATER SERVICES
- NO TREES ALLOWED IN EASEMENT OR WITHIN 8' OF WATER OR SANITARY MAINS IN RIGHT OF WAY.
- THE CONTRACTOR SHALL HAVE IN HIS POSSESSION AT ALL TIMES ONE (1) SIGNED COPY OF THE PLANS WHICH HAVE BEEN APPROVED BY THE PWSO AND THE DISTRICT ENGINEER AND ONE (1) COPY OF THE LATEST PWSO SPECIFICATION MANUAL.

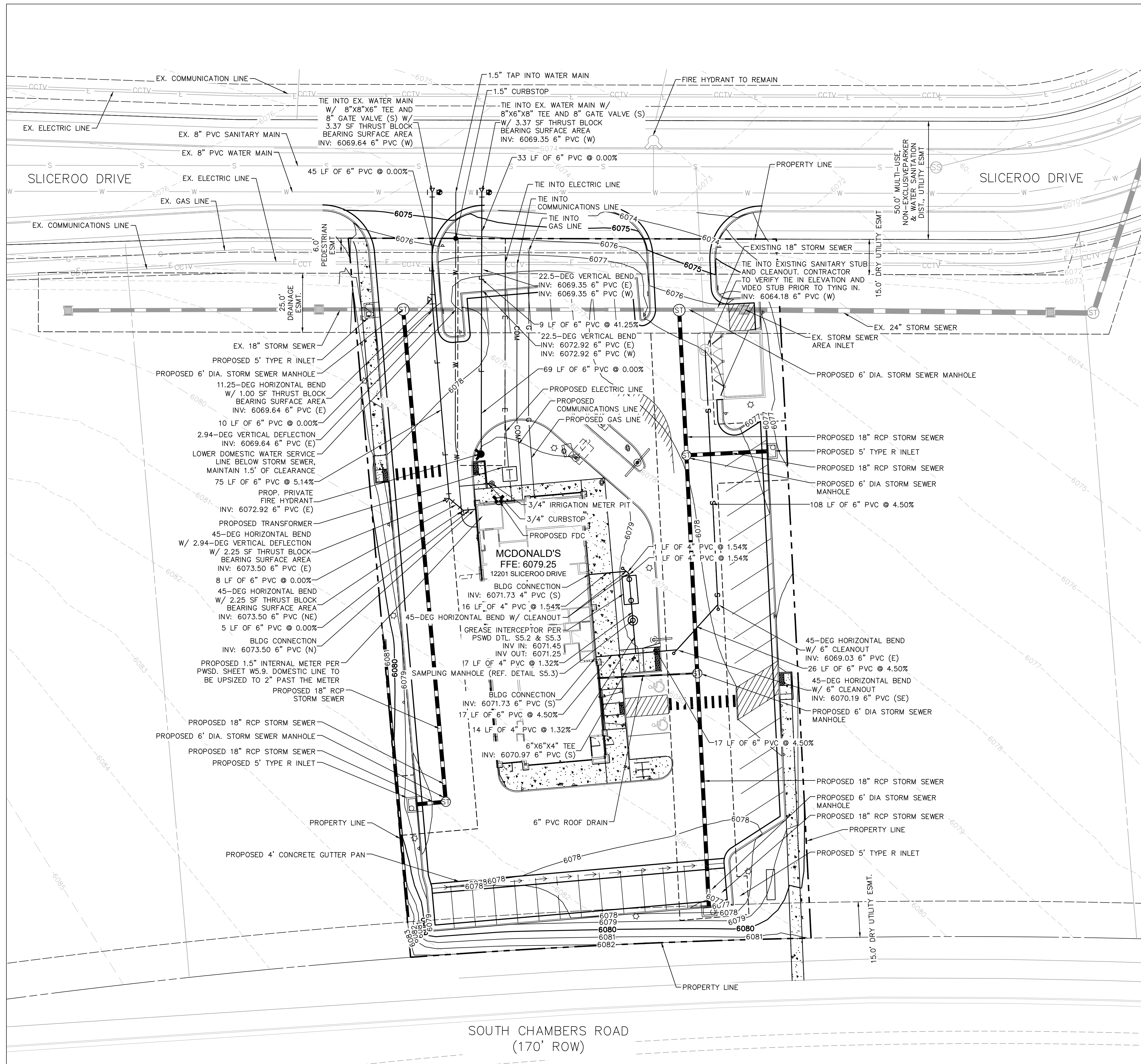
WATER SYSTEM NOTES

- ALL MATERIALS AND WORKMANSHIP SHALL BE IN CONFORMANCE WITH THE PWSO ENGINEERING STANDARDS AND SPECIFICATIONS, LATEST VERSION.
- ALL WATER MAINS SHALL BE PER PWSO MATERIALS SPECIFICATIONS. ALL MATERIALS IN CONTACT WITH POTABLE WATER SHALL BE SUITABLE FOR CHLORINATED AND CHLORAMINATED WATER.
- ALL BENDS, PLUGS, REDUCERS, AND FIRE HYDRANTS TO BE RODDED OR MEGA-LUGGED. ALL FITTINGS SHALL BE WRAPPED PER PWSO MATERIALS SPECIFICATIONS.
- THERE SHALL BE A MINIMUM OF 4.5 FEET OVER ALL WATER MAINS.
- FIRE HYDRANTS SHALL CONFORM TO AWWA C-502 "DRY BARREL FIRE HYDRANTS" PIPE HYDRANT ASSEMBLIES PER PWSO SPECIFICATIONS.
- ALL BENDS, TEES, FIRE HYDRANTS, BLOW OFFS, AND PLUGS AT DEAD-END MAINS SHALL BE PROTECTED FROM THRUST WITH CONCRETE THRUST BLOCKS.
- PRECAUTIONS SHALL BE TAKEN TO PROTECT THE INTERIOR OF PIPES, FITTINGS, AND VALVES AGAINST CONTAMINATION. ALL OPENINGS IN THE PIPELINE SHALL BE CLOSED WITH WATERTIGHT PLUGS WHEN PIPE LAYING IS STOPPED AT THE CLOSE OF THE DAY'S WORK OR FOR OTHER REASONS, SUCH AS REST BREAKS OR MEAL PERIODS.
- VALVES IN STREETS ARE TO BE LOCATED AT PROPERTY LINE EXTENSIONS EXCEPT FOR TAPPING FEES; WHERE AN ADDITIONAL VALVE SHALL BE PLACED ON THE TAPPING TEE. OTHER LOCATIONS SHOWN ON THE PLANS.
- WHEN NECESSARY TO LOWER OR RAISE WATER LINES AT STORM DRAINS AND OTHER UTILITY CROSSINGS, A MINIMUM CLEARANCE OF 1.5 FEET SHALL BE MAINTAINED BETWEEN OUTSIDE OF PIPES.
- THE CONTRACTOR SHALL NOTIFY THE PWSO AT LEAST 48 HOURS PRIOR TO ANY CONSTRUCTION. IF WORK IS SUSPENDED FOR ANY PERIOD OF TIME AFTER INITIAL START-UP, THE CONTRACTOR MUST NOTIFY THE DISTRICT ENGINEER 48 HOURS PRIOR TO RE-START.
- PIPE BEDDING SHALL BE CLEAN, WELL-GRADED SAND OR SQUEEGEE SAND IN ACCORDANCE WITH PWSO STANDARDS AND SPECIFICATIONS, LATEST REVISION.
- THE CONTRACTOR SHALL NOTIFY THE PUBLIC UTILITY COMPANIES AND DETERMINE THE LOCATION OF ALL EXISTING UNDERGROUND UTILITIES PRIOR TO PROCEEDING WITH EXCAVATION. ALL WORK PERFORMED IN THE AREA OF THE PUBLIC UTILITIES SHALL BE PERFORMED ACCORDING TO THE REQUIREMENTS OF THESE AGENCIES.
- COMPACTION OF ALL TRENCHES MUST BE ATTAINED IN ACCORDANCE WITH THE SOILS REPORTS AND COMPACTION TEST RESULTS SUBMITTED TO THE DISTRICT ENGINEER PRIOR TO PROBATIONARY ACCEPTANCE.
- AT LEAST FIVE (5) DAYS PRIOR TO THE START OF CONSTRUCTION, A PRE-CONSTRUCTION MEETING WILL BE HELD AT THE OFFICE OF THE DISTRICT ENGINEER AND ATTENDED BY THE CONTRACTOR, DESIGN ENGINEER, AND REPRESENTATIVE OF OTHER APPROVING AGENCIES.
- CHLORINATION AND FLUSHING: ALL WATER MAINS SHALL BE INSTALLED AND CHLORINATED PER PWSO SPECIFICATIONS. CHLORINATION OF FINISHED PIPELINE COMPLETED BEFORE HYDROSTATIC TESTING.
- HYDROSTATIC TESTING: ALL WATER MAINS SHALL BE TESTED PER THE REQUIREMENTS OF THE PWSO SPECIFICATIONS UP TO MINIMUM OF 150 PSI IN THE PRESENCE OF A PWSO INSPECTOR/ENGINEER.

SEWER SYSTEM NOTES

- ALL MATERIALS AND WORKMANSHIP SHALL BE IN CONFORMANCE WITH THE PWSO ENGINEERING STANDARDS AND SPECIFICATIONS, LATEST VERSION.
- ALL SEWER MAINS SHALL BE PVC, ASTM D-3034, SDR 35 OR APPROVED EQUAL. ALL SEWER MAIN SIZE IS 8" IN DIAMETER UNLESS OTHERWISE NOTED.
- SEWER LINES SHALL BE INSTALLED 5.0 FEET SOUTH OR WEST OF STREET CENTERLINE, UNLESS OTHERWISE SHOWN ON PLANS. SEWER LINES SHALL BE 10.00 FEET FROM WATER LINES EXCEPT WHEN CROSSING EACH OTHER. SEWER LINES WHICH CROSS LESS THAN 1.50 FEET VERTICALLY FROM THE WATER MAIN SHALL BE ENCASED IN CONCRETE AS PER PWSO SPECIFICATIONS. USE RUBBER GASKETS FOR PVC ENCASEMENT.
- SEWER RIM ELEVATIONS SHOWN ARE APPROPRIATE ONLY AND ARE NOT TO BE TAKEN AS FINAL ELEVATIONS. RING AND COVER SHALL BE SET IN CENTERED CONCRETE RINGS WITH RAM-NECK FOR ADJUSTMENT TO MATCH FINAL PAVEMENT ELEVATIONS.
- THE CONTRACTOR AND SURVEY CREW SHALL VERIFY ELEVATIONS OF EXISTING SEWER LINES AND MANHOLES TO BE TIED TO PRIOR TO CONSTRUCTION OR STAKING OF SANITARY SEWER.
- NO UNDERDRAIN SYSTEM WILL BE ALLOWED TO BE PLACED IN MAINLINE OR SEWER SERVICE TRENCHES.
- SEWER SERVICE TEES FOR EACH UNTIL SHALL BE STAKED BY A SURVEY CREW AND FURNISHED AND INSTALLED BY THE CONTRACTOR. THE CONTRACTOR SHALL FURNISH TO THE ENGINEER "AS CONSTRUCTED" LOCATION OF TEES. SEWER WYES SHALL BE USED RATHER THAN TEES.
- ALL MANHOLES SHALL BE 48-INCHES IN DIAMETER WITH 24-INCH RING AND COVER, ECCENTRIC CONE UNLESS OTHERWISE SPECIFIED. ALL MANHOLES SHALL HAVE SHAPED INVERTS.
- PIPE BEDDING SHALL BE CLASS "B" AND SHALL CONFORM TO ASTM C-33 OR D-448 GRADATION NO. 6 OR NO. 67.
- AT LEAST FIVE (5) DAYS PRIOR TO START OF CONSTRUCTION, A PRE-CONSTRUCTION MEETING WILL BE HELD AT THE OFFICE OF THE DISTRICT ENGINEER AND ATTENDED BY THE CONTRACTOR AND REPRESENTATIVES OF THE OTHER APPROVING AGENCIES. IT WILL BE THE RESPONSIBILITY OF THE CONTRACTOR TO CONTACT THE DISTRICT ENGINEER TO SCHEDULE THIS MEETING.
- THE CONTRACTOR SHALL HAVE IN HIS POSSESSION AT ALL TIMES ONE (1) SIGNED COPY OF THE PLANS WHICH HAVE BEEN APPROVED BY THE PWSO AND THE DISTRICT ENGINEER AND ONE (1) COPY OF THE LATEST PWSO SPECIFICATION MANUAL.
- ALL SEWER LINES SHALL BE TESTED IN ACCORDANCE WITH THE PWSO STANDARDS AND SPECIFICATIONS PRIOR TO ACCEPTANCE OR ANY CONNECTION TO AN EXISTING SEWER LINE.
- PRIOR TO STARTING WORK WHERE SEWER MAIN IS TO BE CONNECTED TO EXISTING PWSO SEWER SYSTEMS, THE NEAREST MANHOLE TO THE POINT OF TIE-IN SHALL BE PLUGGED WITH A PLUMBER'S PLUG ON THE INLET SIDE BY THE CONTRACTOR. THIS PLUG SHALL REMAIN IN PLACE UNTIL FINAL PROBATIONARY ACCEPTANCE BY PWSO. THE CONTRACTOR SHALL BE RESPONSIBLE FOR PUMPING AND CLEANING THESE MANHOLES AND REMOVING THE PLUG WHEN INSTRUCTED BY THE DISTRICT.
- PRIOR TO PROBATIONARY ACCEPTANCE WALK-THROUGH, THE CONTRACTOR SHALL JET CLEAN THE ENTIRE SANITARY SEWER SYSTEM AND PUMP OUT AT THE PLUGGED MANHOLE.

TITLE	UTILITY PLANS	DRAWN BY	JJM	DATE	07/1/21	REVISION #1	JJM	DATE	07/1/21	REVISION #2	JJM	DATE	07/1/21	REVISION #3	JJM	DATE	07/1/21	REVISION #4	JJM	DATE	07/1/21	REVISION #5	JJM	DATE	07/1/21	REVISION #6	JJM	DATE	07/1/21	REVISION #7	JJM	DATE	07/1/21	REVISION #8	JJM	DATE	07/1/21	REVISION #9	JJM	DATE	07/1/21	REVISION #10	JJM	DATE	07/1/21	REVISION #11	JJM	DATE	07/1/21	REVISION #12	JJM	DATE	07/1/21	REVISION #13	JJM	DATE	07/1/21	REVISION #14	JJM	DATE	07/1/21	REVISION #15	JJM	DATE	07/1/21	REVISION #16	JJM	DATE	07/1/21	REVISION #17	JJM	DATE	07/1/21	REVISION #18	JJM	DATE	07/1/21	REVISION #19	JJM	DATE	07/1/21	REVISION #20	JJM	DATE	07/1/21	REVISION #21	JJM	DATE	07/1/21	REVISION #22	JJM	DATE	07/1/21	REVISION #23	JJM	DATE	07/1/21	REVISION #24	JJM	DATE	07/1/21	REVISION #25	JJM	DATE	07/1/21	REVISION #26	JJM	DATE	07/1/21	REVISION #27	JJM	DATE	07/1/21	REVISION #28	JJM	DATE	07/1/21	REVISION #29	JJM	DATE	07/1/21	REVISION #30	JJM	DATE	07/1/21	REVISION #31	JJM	DATE	07/1/21	REVISION #32	JJM	DATE	07/1/21	REVISION #33	JJM	DATE	07/1/21	REVISION #34	JJM	DATE	07/1/21	REVISION #35	JJM	DATE	07/1/21	REVISION #36	JJM	DATE	07/1/21	REVISION #37	JJM	DATE	07/1/21	REVISION #38	JJM	DATE	07/1/21	REVISION #39	JJM	DATE	07/1/21	REVISION #40	JJM	DATE	07/1/21	REVISION #41	JJM	DATE	07/1/21	REVISION #42	JJM	DATE	07/1/21	REVISION #43	JJM	DATE	07/1/21	REVISION #44	JJM	DATE	07/1/21	REVISION #45	JJM	DATE	07/1/21	REVISION #46	JJM	DATE	07/1/21	REVISION #47	JJM	DATE	07/1/21	REVISION #48	JJM	DATE	07/1/21	REVISION #49	JJM	DATE	07/1/21	REVISION #50	JJM	DATE	07/1/21	REVISION #51	JJM	DATE	07/1/21	REVISION #52	JJM	DATE	07/1/21	REVISION #53	JJM	DATE	07/1/21	REVISION #54	JJM	DATE	07/1/21	REVISION #55	JJM	DATE	07/1/21	REVISION #56	JJM	DATE	07/1/21	REVISION #57	JJM	DATE	07/1/21	REVISION #58	JJM	DATE	07/1/21	REVISION #59	JJM	DATE	07/1/21	REVISION #60	JJM	DATE	07/1/21	REVISION #61	JJM	DATE	07/1/21	REVISION #62	JJM	DATE	07/1/21	REVISION #63	JJM	DATE	07/1/21	REVISION #64	JJM	DATE	07/1/21	REVISION #65	JJM	DATE	07/1/21	REVISION #66	JJM	DATE	07/1/21	REVISION #67	JJM	DATE	07/1/21	REVISION #68	JJM	DATE	07/1/21	REVISION #69	JJM	DATE	07/1/21	REVISION #70	JJM	DATE	07/1/21	REVISION #71	JJM	DATE	07/1/21	REVISION #72	JJM	DATE	07/1/21	REVISION #73	JJM	DATE	07/1/21	REVISION #74	JJM	DATE	07/1/21	REVISION #75	JJM	DATE	07/1/21	REVISION #76	JJM	DATE	07/1/21	REVISION #77	JJM	DATE	07/1/21	REVISION #78	JJM	DATE	07/1/21	REVISION #79	JJM	DATE	07/1/21	REVISION #80	JJM	DATE	07/1/21	REVISION #81	JJM	DATE	07/1/21	REVISION #82	JJM	DATE	07/1/21	REVISION #83	JJM	DATE	07/1/21	REVISION #84	JJM	DATE	07/1/21	REVISION #85	JJM	DATE	07/1/21	REVISION #86	JJM	DATE	07/1/21	REVISION #87	JJM	DATE	07/1/21	REVISION #88	JJM	DATE	07/1/21	REVISION #89	JJM	DATE	07/1/21	REVISION #90	JJM	DATE	07/1/21	REVISION #91	JJM	DATE	07/1/21	REVISION #92	JJM	DATE	07/1/21	REVISION #93	JJM	DATE	07/1/21	REVISION #94	JJM	DATE	07/1/21	REVISION #95	JJM	DATE	07/1/21	REVISION #96	JJM	DATE	07/1/21	REVISION #97	JJM	DATE	07/1/21	REVISION #98	JJM	DATE	07/1/21	REVISION #99	JJM	DATE	07/1/21	REVISION #100	JJM	DATE	07/1/21	REVISION #101	JJM	DATE	07/1/21	REVISION #102	JJM	DATE	07/1/21	REVISION #103	JJM	DATE	07/1/21	REVISION #104	JJM	DATE	07/1/21	REVISION #105	JJM	DATE	07/1/21	REVISION #106	JJM	DATE	07/1/21	REVISION #107	JJM	DATE	07/1/21	REVISION #108	JJM	DATE	07/1/21	REVISION #109	JJM	DATE	07/1/21	REVISION #110	JJM	DATE	07/1/21	REVISION #111	JJM	DATE	07/1/21	REVISION #112	JJM	DATE	07/1/21	REVISION #113	JJM	DATE	07/1/21	REVISION #114	JJM	DATE	07/1/21	REVISION #115	JJM	DATE	07/1/21	REVISION #116	JJM	DATE	07/1/21	REVISION #117	JJM	DATE	07/1/21	REVISION #118	JJM	DATE	07/1/21	REVISION #119	JJM	DATE	07/1/21	REVISION #120	JJM	DATE	07/1/21	REVISION #121	JJM	DATE	07/1/21	REVISION #122	JJM	DATE	07/1/21	REVISION #123	JJM	DATE	07/1/21	REVISION #124	JJM	DATE	07/1/21	REVISION #125	JJM	DATE	07/1/21	REVISION #126	JJM	DATE	07/1/21	REVISION #127	JJM	DATE	07/1/21	REVISION #128	JJM	DATE	07/1/21	REVISION #129	JJM	DATE	07/1/21	REVISION #130	JJM	DATE	07/1/21	REVISION #131	JJM	DATE	07/1/21	REVISION #132	JJM	DATE	07/1/21	REVISION #133	JJM	DATE	07/1/21	REVISION #134	JJM	DATE	07/1/21	REVISION #135	JJM	DATE	07/1/21	REVISION #136	JJM	DATE	07/1/21	REVISION #137	JJM	DATE	07/1/21	REVISION #138	JJM	DATE	07/1/21	REVISION #139	JJM	DATE	07/1/21	REVISION #140	JJM	DATE	07/1/21	REVISION #141	JJM	DATE	07/1/21	REVISION #142	JJM	DATE	07/1/21	REVISION #143	JJM	DATE	07/1/21	REVISION #144	JJM	DATE	07/1/21	REVISION #145	JJM	DATE	07/1/21	REVISION #146	JJM	DATE	07/1/21	REVISION #147	JJM	DATE	07/1/21	REVISION #148	JJM	DATE	07/1/21	REVISION #149	JJM	DATE	07/1/21	REVISION #150	JJM	DATE	07/1/21	REVISION #151	JJM	DATE	07/1/21	REVISION #152	JJM	DATE	07/1/21	REVISION #153	JJM	DATE	07/1/21	REVISION #154	JJM	DATE	07/1/21	REVISION #155	JJM	DATE	07/1/21	REVISION #156	JJM	DATE	07/1/21	REVISION #157	JJM	DATE	07/1/21	REVISION #158	JJM	DATE	07/1/21	REVISION #159	JJM	DATE	07/1/21	REVISION #160	JJM	DATE	07/1/21	REVISION #161	JJM	DATE	07/1/21	REVISION #162	JJM	DATE	07/1/21	REVISION #163	JJM	DATE	07/1/21	REVISION #164	JJM	DATE	07/1/21	REVISION #165	JJM	DATE	07/1/21	REVISION #166	JJM	DATE	07/1/21	REVISION #167	JJM	DATE	07/1/21	REVISION #168	JJM	DATE	07/1/21	REVISION #169	JJM	DATE	07/1/21	REVISION #170	JJM	DATE	07/1/21	REVISION #171	JJM	DATE	07/1/21	REVISION #172	JJM	DATE	07/1/21	REVISION #173	JJM	DATE	07/1/21	REVISION #174	JJM	DATE	07/1/21	REVISION #175	JJM	DATE	07/1/21	REVISION #176	JJM	DATE	07/1/21	REVISION #177	JJM	DATE	07/1/21	REVISION #178	JJM	DATE	07/1/21	REVISION #179	JJM	DATE	07/1/21	REVISION #180	JJM	DATE	07/1/21	REVISION #181	JJM	DATE	07/1/21	REVISION #182	JJM	DATE	07/1/21	REVISION #183	JJM	DATE	07/1/21	REVISION #184	JJM	DATE	07/1/21	REVISION #185	JJM	DATE	07/1/21	REVISION #186	JJM	DATE	07/1/21	REVISION #187	JJM	DATE	07/1/21	REVISION #188	JJM	DATE	07/1/21	REVISION #189	JJM	DATE	07/1/21	REVISION #190	JJM	DATE	07/1/21	REVISION #191	JJM	DATE	07/1/21	REVISION #192	JJM	DATE	07/1/21	REVISION #193	JJM	DATE	07/1/21	REVISION #194	JJM	DATE	07/1/21	REVISION #195	JJM	DATE	07/1/21	REVISION #196	JJM	DATE	07/1/21	REVISION #197	JJM	DATE	07/1/21	REVISION #198	JJM	DATE	07/1/21	REVISION #199	JJM	DATE	07/1/21	REVISION #200	JJM	DATE	07/1/21	REVISION #201	JJM	DATE	07/1/21	REVISION #202	JJM	DATE	07/1/21	REVISION #203	JJM	DATE	07/1/21	REVISION #204	JJM	DATE	07/1/21	REVISION #205	JJM	DATE	07/1/21	REVISION #206	JJM	DATE	07/1/21	REVISION #207	JJM	DATE	07/1/21	REVISION #208	JJM	DATE	07/1/21	REVISION #209	JJM	DATE	07/1/21	REVISION #210	JJM	DATE	07/1/21	REVISION #211	JJM	DATE	07/1/21	REVISION #212	JJM	DATE	07/1/21	REVISION #213	JJM	DATE	07/1/21	REVISION #214	JJM	DATE	07/1/21	REVISION #215	JJM	DATE	07/1/21	REVISION #216	JJM	DATE	07/1/21	REVISION #217	JJM	DATE	07/1/21	REVISION #218	JJM	DATE	07/1/21	REVISION #219	JJM	DATE	07/1/21	REVISION #220	JJM	DATE	07/1/21	REVISION #221	JJM	DATE	07/1/21	REVISION #222	JJM	DATE	07/1/21	REVISION #223	JJM	DATE	07/1/21	REVISION #224	JJM	DATE	07/1/21	REVISION #225	JJM	DATE	07/1/21	REVISION #226	JJM	DATE	07/1/21	REVISION #227	JJM	DATE	07/1/21	REVISION #228	JJM	DATE	07/1/21	REVISION #229	JJM	DATE	07/1/21	REVISION #230	JJM	DATE	07/1/21	REVISION #231	JJM	DATE	07/1/21	REVISION #232	JJM	DATE	07/1/21	REVISION #233	JJM	DATE	07/1/21	REVISION #234	JJM	DATE	07/1/21	REVISION #235	JJM	DATE	07/1/21	REVISION #236	JJM	DATE	07/1/21	REVISION #237	JJM	DATE	07/1/21	REVISION #238	JJM	DATE	07/1/21	REVISION #239	JJM	DATE	07/1/21	REVISION #240	JJM	DATE	07/1/21	REVISION #241	JJM	DATE	07/1/21	REVISION #242	JJM	DATE	07/1/21	REVISION #243	JJM	DATE	07/1/21	REVISION #244	JJM	DATE	07/1/21	REVISION #245</
-------	---------------	----------	-----	------	---------	-------------	-----	------	---------	-------------	-----	------	---------	-------------	-----	------	---------	-------------	-----	------	---------	-------------	-----	------	---------	-------------	-----	------	---------	-------------	-----	------	---------	-------------	-----	------	---------	-------------	-----	------	---------	--------------	-----	------	---------	--------------	-----	------	---------	--------------	-----	------	---------	--------------	-----	------	---------	--------------	-----	------	---------	--------------	-----	------	---------	--------------	-----	------	---------	--------------	-----	------	---------	--------------	-----	------	---------	--------------	-----	------	---------	--------------	-----	------	---------	--------------	-----	------	---------	--------------	-----	------	---------	--------------	-----	------	---------	--------------	-----	------	---------	--------------	-----	------	---------	--------------	-----	------	---------	--------------	-----	------	---------	--------------	-----	------	---------	--------------	-----	------	---------	--------------	-----	------	---------	--------------	-----	------	---------	--------------	-----	------	---------	--------------	-----	------	---------	--------------	-----	------	---------	--------------	-----	------	---------	--------------	-----	------	---------	--------------	-----	------	---------	--------------	-----	------	---------	--------------	-----	------	---------	--------------	-----	------	---------	--------------	-----	------	---------	--------------	-----	------	---------	--------------	-----	------	---------	--------------	-----	------	---------	--------------	-----	------	---------	--------------	-----	------	---------	--------------	-----	------	---------	--------------	-----	------	---------	--------------	-----	------	---------	--------------	-----	------	---------	--------------	-----	------	---------	--------------	-----	------	---------	--------------	-----	------	---------	--------------	-----	------	---------	--------------	-----	------	---------	--------------	-----	------	---------	--------------	-----	------	---------	--------------	-----	------	---------	--------------	-----	------	---------	--------------	-----	------	---------	--------------	-----	------	---------	--------------	-----	------	---------	--------------	-----	------	---------	--------------	-----	------	---------	--------------	-----	------	---------	--------------	-----	------	---------	--------------	-----	------	---------	--------------	-----	------	---------	--------------	-----	------	---------	--------------	-----	------	---------	--------------	-----	------	---------	--------------	-----	------	---------	--------------	-----	------	---------	--------------	-----	------	---------	--------------	-----	------	---------	--------------	-----	------	---------	--------------	-----	------	---------	--------------	-----	------	---------	--------------	-----	------	---------	--------------	-----	------	---------	--------------	-----	------	---------	--------------	-----	------	---------	--------------	-----	------	---------	--------------	-----	------	---------	--------------	-----	------	---------	--------------	-----	------	---------	--------------	-----	------	---------	--------------	-----	------	---------	--------------	-----	------	---------	--------------	-----	------	---------	--------------	-----	------	---------	--------------	-----	------	---------	--------------	-----	------	---------	--------------	-----	------	---------	--------------	-----	------	---------	--------------	-----	------	---------	--------------	-----	------	---------	--------------	-----	------	---------	--------------	-----	------	---------	---------------	-----	------	---------	---------------	-----	------	---------	---------------	-----	------	---------	---------------	-----	------	---------	---------------	-----	------	---------	---------------	-----	------	---------	---------------	-----	------	---------	---------------	-----	------	---------	---------------	-----	------	---------	---------------	-----	------	---------	---------------	-----	------	---------	---------------	-----	------	---------	---------------	-----	------	---------	---------------	-----	------	---------	---------------	-----	------	---------	---------------	-----	------	---------	---------------	-----	------	---------	---------------	-----	------	---------	---------------	-----	------	---------	---------------	-----	------	---------	---------------	-----	------	---------	---------------	-----	------	---------	---------------	-----	------	---------	---------------	-----	------	---------	---------------	-----	------	---------	---------------	-----	------	---------	---------------	-----	------	---------	---------------	-----	------	---------	---------------	-----	------	---------	---------------	-----	------	---------	---------------	-----	------	---------	---------------	-----	------	---------	---------------	-----	------	---------	---------------	-----	------	---------	---------------	-----	------	---------	---------------	-----	------	---------	---------------	-----	------	---------	---------------	-----	------	---------	---------------	-----	------	---------	---------------	-----	------	---------	---------------	-----	------	---------	---------------	-----	------	---------	---------------	-----	------	---------	---------------	-----	------	---------	---------------	-----	------	---------	---------------	-----	------	---------	---------------	-----	------	---------	---------------	-----	------	---------	---------------	-----	------	---------	---------------	-----	------	---------	---------------	-----	------	---------	---------------	-----	------	---------	---------------	-----	------	---------	---------------	-----	------	---------	---------------	-----	------	---------	---------------	-----	------	---------	---------------	-----	------	---------	---------------	-----	------	---------	---------------	-----	------	---------	---------------	-----	------	---------	---------------	-----	------	---------	---------------	-----	------	---------	---------------	-----	------	---------	---------------	-----	------	---------	---------------	-----	------	---------	---------------	-----	------	---------	---------------	-----	------	---------	---------------	-----	------	---------	---------------	-----	------	---------	---------------	-----	------	---------	---------------	-----	------	---------	---------------	-----	------	---------	---------------	-----	------	---------	---------------	-----	------	---------	---------------	-----	------	---------	---------------	-----	------	---------	---------------	-----	------	---------	---------------	-----	------	---------	---------------	-----	------	---------	---------------	-----	------	---------	---------------	-----	------	---------	---------------	-----	------	---------	---------------	-----	------	---------	---------------	-----	------	---------	---------------	-----	------	---------	---------------	-----	------	---------	---------------	-----	------	---------	---------------	-----	------	---------	---------------	-----	------	---------	---------------	-----	------	---------	---------------	-----	------	---------	---------------	-----	------	---------	---------------	-----	------	---------	---------------	-----	------	---------	---------------	-----	------	---------	---------------	-----	------	---------	---------------	-----	------	---------	---------------	-----	------	---------	---------------	-----	------	---------	---------------	-----	------	---------	---------------	-----	------	---------	---------------	-----	------	---------	---------------	-----	------	---------	---------------	-----	------	---------	---------------	-----	------	---------	---------------	-----	------	---------	---------------	-----	------	---------	---------------	-----	------	---------	---------------	-----	------	---------	---------------	-----	------	---------	---------------	-----	------	---------	---------------	-----	------	---------	---------------	-----	------	---------	---------------	-----	------	---------	---------------	-----	------	---------	---------------	-----	------	---------	---------------	-----	------	---------	---------------	-----	------	---------	---------------	-----	------	---------	---------------	-----	------	---------	---------------	-----	------	---------	---------------	-----	------	---------	---------------	-----	------	---------	---------------	-----	------	---------	---------------	-----	------	---------	---------------	-----	------	---------	---------------	-----	------	---------	---------------	-----	------	---------	---------------	-----	------	---------	---------------	-----	------	---------	---------------	-----	------	---------	---------------	-----	------	---------	---------------	-----	------	---------	---------------	-----	------	---------	---------------	-----	------	---------	---------------	-----	------	---------	---------------	-----	------	---------	---------------	-----	------	---------	---------------	-----	------	---------	---------------	-----	------	---------	---------------	-----	------	---------	---------------	-----	------	---------	---------------	-----	------	---------	---------------	-----	------	---------	---------------	-----	------	---------	-----------------



LEGEND:

---	PROPERTY LINE
- - - -	EASEMENT
=====	SCREEN WALL
---	EX. WATER LINE
---	EX. SANITARY LINE
---	EX. STORM SEWER
---	EX. PHONE LINE
---	EX. ELECTRIC LINE
---	EX. GAS LINE
---	PROP. WATER LINE
---	PROP. SANITARY LINE
---	PROP. STORM SEWER
---	PROP. PHONE LINE
---	PROP. ELECTRIC LINE
---	PROP. GAS LINE

- GENERAL NOTES:**
1. ALL EXISTING UTILITIES ARE TO REMAIN UNLESS OTHERWISE NOTED.
 2. LIGHT POLES SHALL BE SETBACK AT LEAST 18" FROM TOP BACK OF CURB ADJACENT TO HEAD IN PARKING STALLS.
 3. CONTRACTOR VIDEO EXISTING SANITARY SEWER FROM END OF EXISTING STUB TO EXISTING MAIN TO VERIFY CONDITION PRIOR TO CONNECTION.

- CAUTION NOTES:**
1. CONTRACTOR TO VERIFY TIE IN LOCATIONS TO EXISTING UTILITIES.
 2. CONTRACTOR TO MAINTAIN AT LEAST 18" OF VERTICAL SEPARATION BETWEEN UTILITIES.

ALL FIRE HYDRANTS SHALL BE INSTALLED ACCORDING TO WATER UTILITY STANDARDS. THE NUMBER AND LOCATIONS OF THE FIRE HYDRANTS AS SHOWN ON THE OVERALL UTILITY PLAN ARE CORRECT AS SPECIFIED BY THE TOWN OF PARKER, COMMUNITY DEVELOPMENT DEPARTMENT.

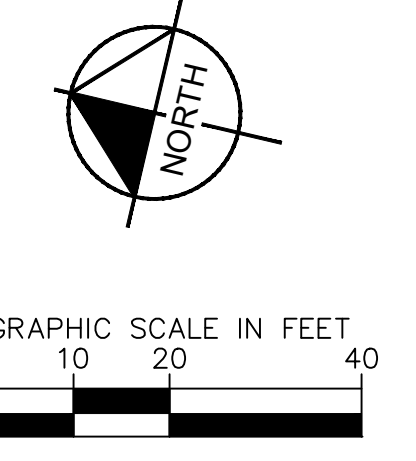
FIRE CODE OFFICIAL OR DESIGNATED REPRESENTATIVE DATE

(NOTE - UNDERGROUND FIRE LINE (UFL) SUBMITTAL DOCUMENTS MUST MEET THE REQUIREMENTS OF NFPA 24 WHEN SUBMITTING FOR REVIEW.)

THE TOWN OF PARKER REVIEW CONSTITUTES GENERAL COMPLIANCE WITH THE TOWN'S STANDARDS AND APPROVED VARIANCES. SUBJECT TO THESE PLANS BEING STAMPED, SIGNED, AND DATED BY THE PROFESSIONAL ENGINEER OF RECORD, REVIEW BY THE TOWN DOES NOT CONSTITUTE APPROVAL OF THE PLAN DESIGN OR ACCURACY AND CORRECTNESS OF ENGINEERING CALCULATIONS. ERRORS IN THE DESIGN OR CALCULATIONS REMAIN THE RESPONSIBILITY OF REGISTERED PROFESSIONAL ENGINEER WHOSE STAMP AND SIGNATURE ARE AFFIXED TO THIS DOCUMENT.

THIS REVIEW DOES NOT CONSTITUTE APPROVAL OF ANY PRIVATE ON-SITE IMPROVEMENTS WHICH MAY BE SHOWN. CONSTRUCTION CANNOT COMMENCE UNTIL ALL REQUIRED DRAINAGE/TRAFFIC REPORT(S), FINAL DEVELOPMENT PLAN(S), SPECIAL REVIEW(S), GRADING PERMIT, AND/OR OTHER PERMITS ARE COMPLETE, APPROVED AND ON FILE WITH THE TOWN OF PARKER.

TOWN OF PARKER, DIRECTOR OF ENGINEERING DATE



TITLE	UTILITY PLANS	DATE	07/1/21
DESCRIPTION	UTILITY PLAN	DATE ISSUED	07/1/21
SITE ID	0050785	SITE ADDRESS	LOT 3, DOUGLAS 234 FILING NO. 6
PREPARED BY:	McDonald's USA, LLC	REVIEWED BY:	JRH
DATE:	3/9/22	DATE:	11/22/21
REVISION #3	REVISION #2	REVISION #1	REV
REVISION #3	REVISION #2	REVISION #1	DATE
REVISION #3	REVISION #2	REVISION #1	DESCRIPTION
JJM	JJM	JJM	BY

Kimley»Horn

PRELIMINARY
FOR REVIEW ONLY
NOT FOR
CONSTRUCTION

McDonald's USA, LLC

DRAWN BY: JJM
STD ISSUE DATE: 07/1/21

REVIEWED BY: JJM

DATE ISSUED: 07/1/21

UTILITY PLANS

C2.2

INSPECTION POLICY:

1. ALL SERVICE INSPECTIONS MUST BE SCHEDULED AT LEAST 24 HOURS IN ADVANCE OF THE REQUESTED INSPECTION.
2. SERVICE INSPECTIONS WILL OCCUR BETWEEN 1:00 P.M. AND 3:00 P.M. SPECIFIC INSPECTION TIMES ARE NOT AVAILABLE.
3. IF THE CONTRACTOR IS NOT READY FOR INSPECTION WHEN THE INSPECTOR ARRIVES AT THE SITE OR SERVICE FAILS, A RE-INSPECTION WILL HAVE TO BE SCHEDULED IN ACCORDANCE WITH NOTES 1 AND 2 ABOVE AND A RE-INSPECTION FEE CHARGED.
4. SHOULD THE SERVICE LINES BE DAMAGED BY LATER CONSTRUCTION, AN INSPECTION OF THE REPAIR WILL BE REQUIRED IN ACCORDANCE WITH NOTES 1 AND 2 ABOVE.
5. THE CONTRACTOR SHALL LEAVE ALL PIPE AND FITTINGS EXPOSED FOR THE INSPECTOR TO OBSERVE. INSPECTORS WILL NOT ENTER ANY EXCAVATIONS TO CHECK MATERIALS. THE TOP LAYER OF BEDDING CAN BE ADDED AFTER THE INSPECTION HAS BEEN COMPLETED.
6. ALL EXCAVATIONS SHALL BE IN ACCORDANCE WITH OSHA STANDARDS.
7. LOTS WITHOUT BUILDING ADDRESSES BEFORE DISTRICT INSPECTION OR METER SET WILL FAIL AUTOMATICALLY.
8. CONTRACTOR MUST BE PRESENT AT TIME OF INSPECTION. UNLESS COORDINATED WITH DISTRICT INSPECTOR.

INSTALLATION NOTES:

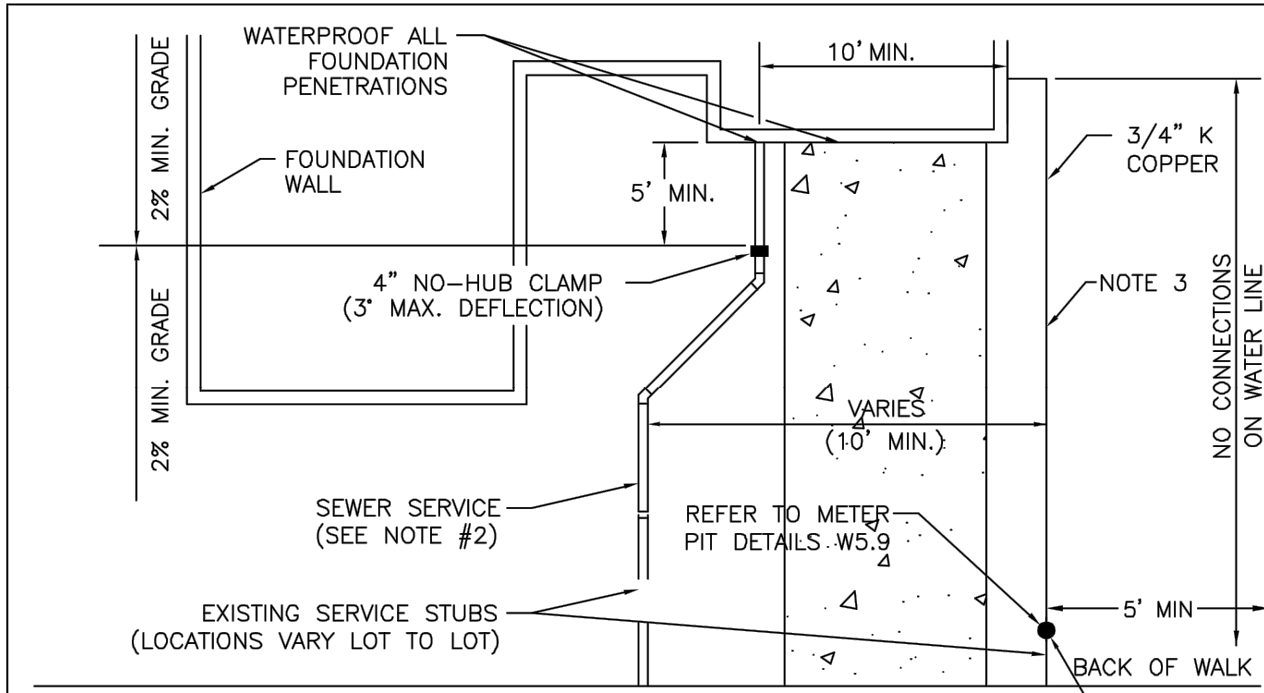
- WATER**
1. ACCEPTABLE PIPE MATERIALS SHALL BE K-COPPER TUBING. (3/4" MIN.)
 2. APPROVED BEDDING TO BE SQUEEGEE.
 3. ONLY ONE COUPLING WILL BE ALLOWED BETWEEN THE STUB-IN AND BUILDING. COMPRESSION COUPLINGS WILL NOT BE ALLOWED ON NEW CONSTRUCTION. SILVER SOLDERED JOINTS MUST BE USED ON SERVICES LARGER THAN 3/4". SILVER SOLDERED JOINTS MUST BE INSPECTED BY PWS BEFORE BURIAL. FLARED COUPLINGS WILL BE ALLOWED ON ALL SERVICES 3/4" AND SMALLER.
 4. A WATER SERVICE WHICH CROSSES A SEWER SERVICE CAN DO SO ONLY AT A 45-90 ANGLE. WATER SERVICES SHALL BE LOCATED A MINIMUM OF 18" ABOVE SEWER SERVICE.
 5. WATER SERVICE FOUNDATION PENETRATIONS SHALL BE WATERPROOFED USING MASTIC OR OTHER APPROVED METHOD, CRAWL SPACE REQUIRES CONTINUOUS COPPER WITH A 1" BURY.
 6. CURB STOP MUST BE PLUMB AND CENTERED OVER THE NUT. IT SHOULD BE STRAPPED TO THE METER PIT (RESIDENTIAL INSTALLATIONS) OR CENTERED OVER THE EASEMENT LINE (COMMERCIAL INSTALLATIONS). THE ASSEMBLY MUST BE AT OR SLIGHTLY ABOVE FINISHED GRADE.
 7. MOVED CURB BOXES MUST BE INSPECTED BY PWS BEFORE BURIAL.
 8. WATERLINE MUST BE ATTACHED TO A SUPPORT BOARD THAT IS MOUNTED TO THE WALL.
 9. NO VOIDS ALLOWED UNDER WATERLINES FROM STOP BOX TO FOUNDATION.
 10. CURBSTOP BOXES AND METER PITS CANNOT BE IN DRIVEWAYS.
 11. ONLY 3/4" (JUMPER) PIPES (RESIDENCES) ARE ALLOWED. (JUMPER) PIPES WILL BE REMOVED PRIOR TO METER SET DATE.
 12. ALL SERVICES WILL BE PERMANENTLY MARKED ON CURB FACE AS FOLLOWS:
"X" FOR SANITARY SEWER SERVICE
"W" FOR WATER SERVICES
 13. NO SPLICES OR FLARED COUPLINGS ALLOWED ON SERVICES LARGER THAN 3/4". SILVER SOLDERED JOINTS MUST BE USED IN MOVING STOPBOXES ON SERVICES LARGER THAN 3/4". SILVER SOLDERED JOINTS MUST BE INSPECTED BY PWS BEFORE BURIAL. FLARED COUPLINGS WILL BE ALLOWED ON ALL SERVICES 3/4" AND SMALLER.

PARKER WATER & SANITATION DISTRICT
DISTRICT POLICIES & INSTALLATION NOTES FOR WATER SERVICES

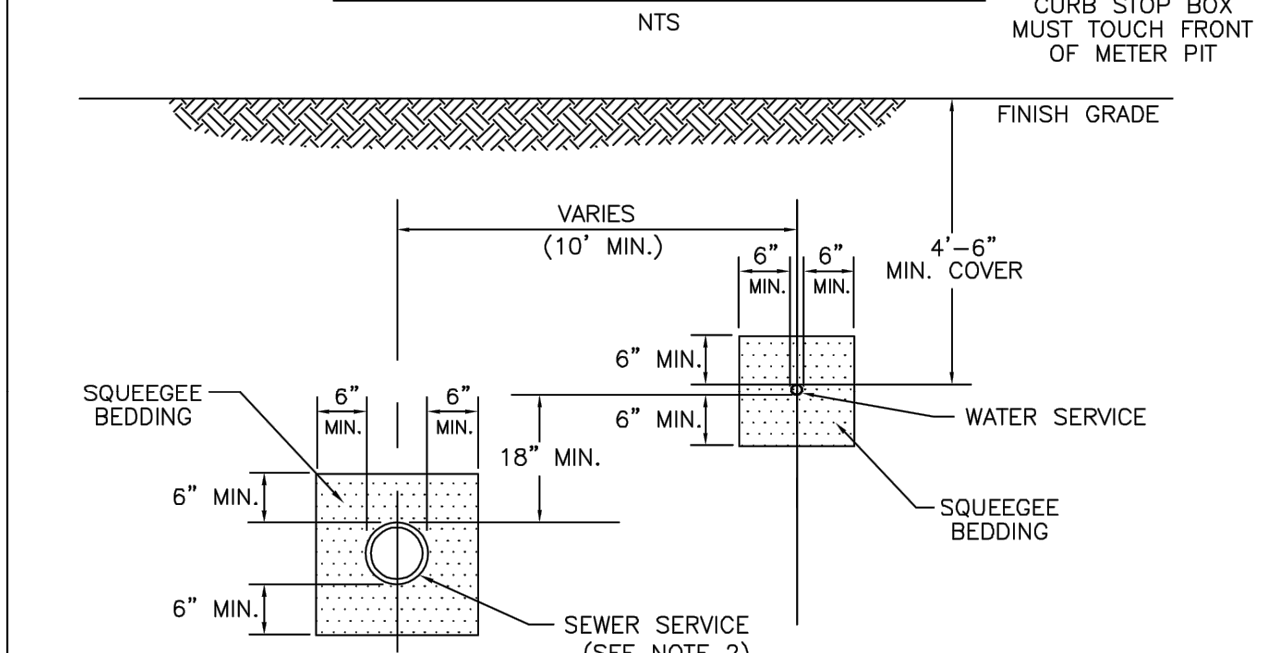
SCALE: NONE	DATE: 2/96
APPROVED: PVR	1/04 1/16 10/16
DIRECTOR OF ENGINEERING	

SHEET W1.1

2016 REVISION



TYPICAL SERVICES PLAN VIEW



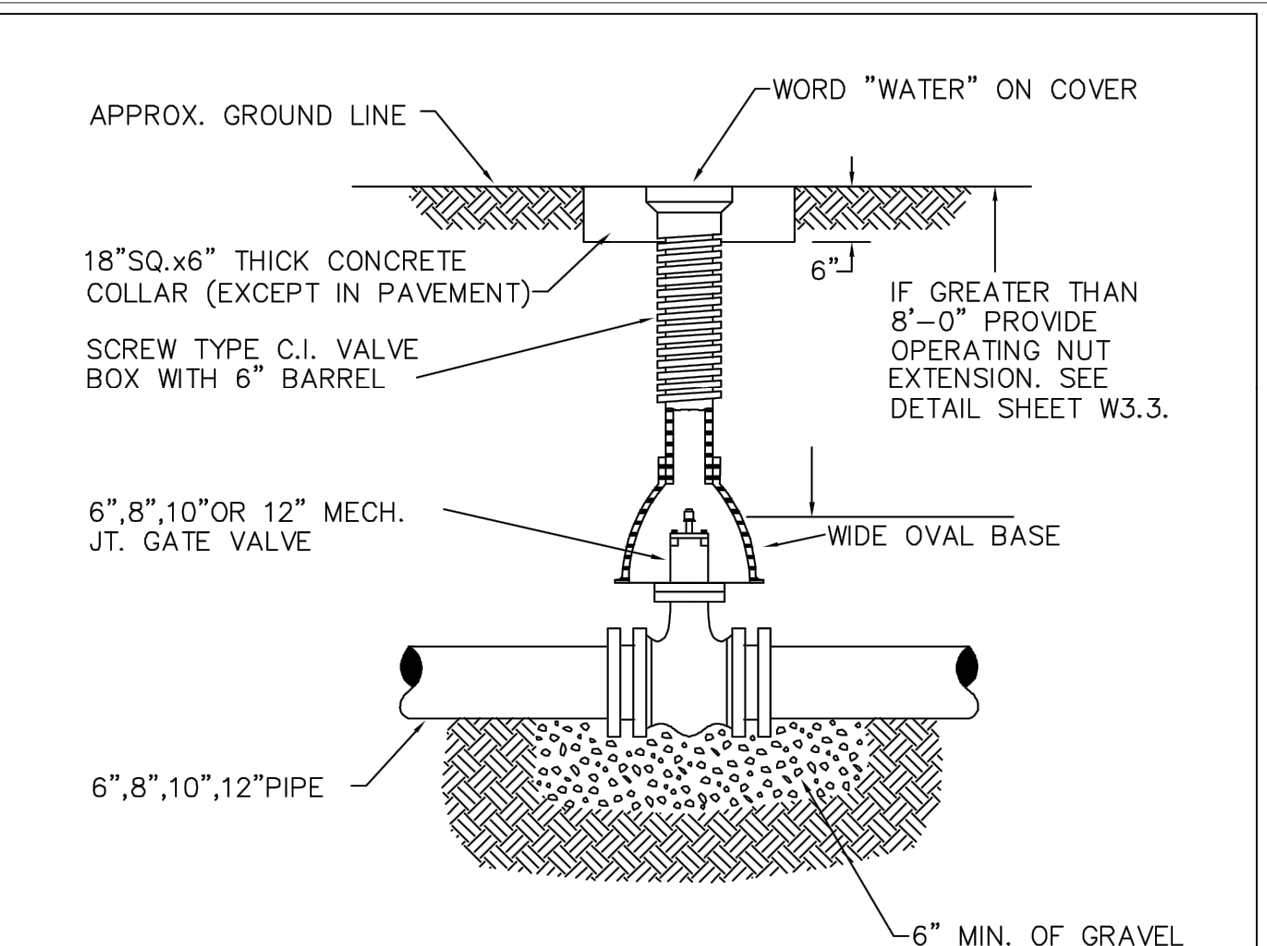
TYPICAL SERVICES SECTION

PARKER WATER & SANITATION DISTRICT
TYPICAL WATER SERVICES

SCALE: NONE	DATE: 2/96
APPROVED: PVR	1/04 10/16 06/05 12/07 1/16
DIRECTOR OF ENGINEERING	

SHEET W1.2

2016 REVISION



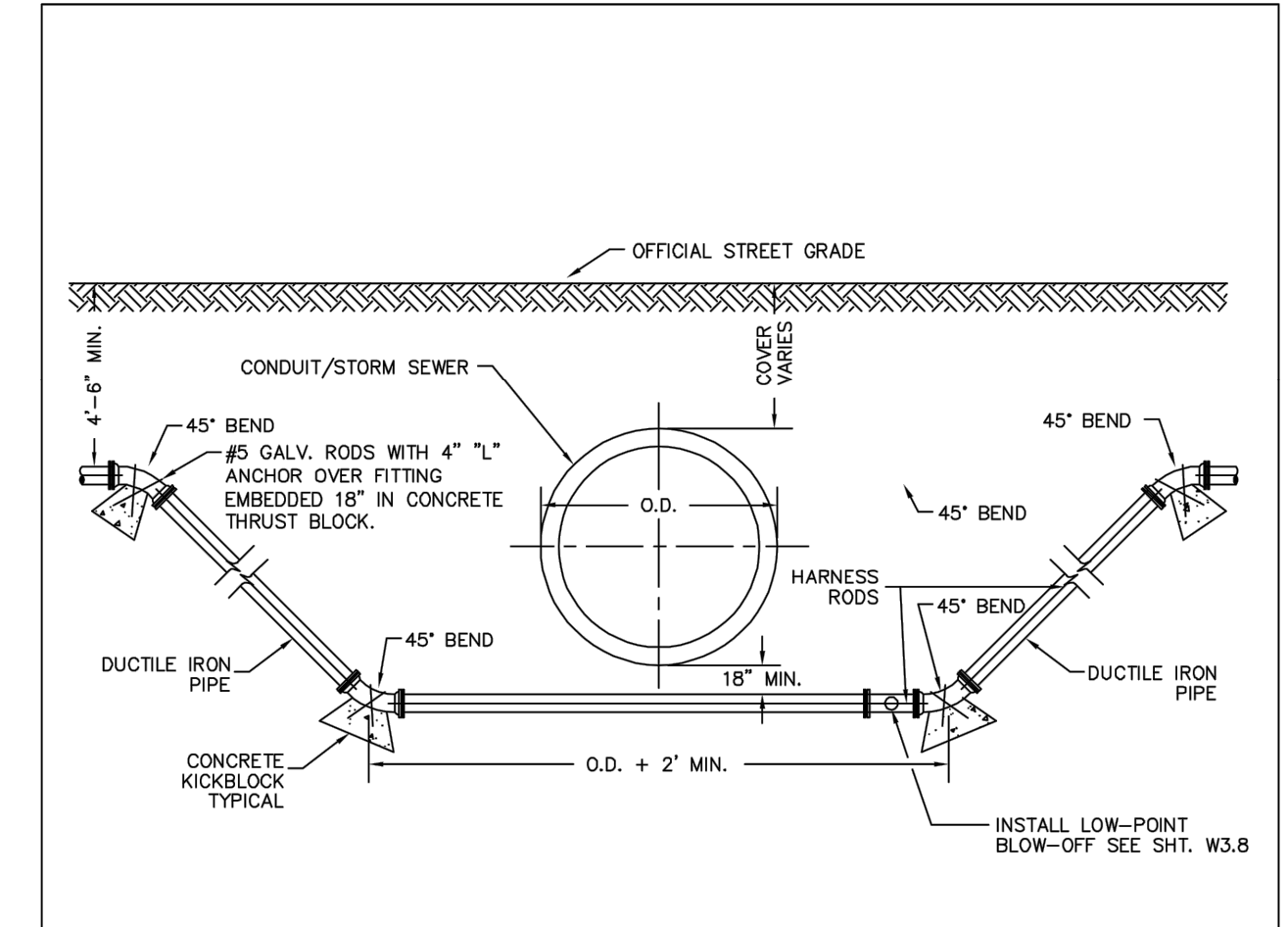
6-INCH VALVE BOXES
VALVE BOX DETAIL

PARKER WATER & SANITATION DISTRICT
VALVE BOX DETAIL

SCALE: NONE	DATE: 2/96
APPROVED: PVR	5/98 10/16 6/99 12/07 1/16
DIRECTOR OF ENGINEERING	

SHEET W3.10

2016 REVISION



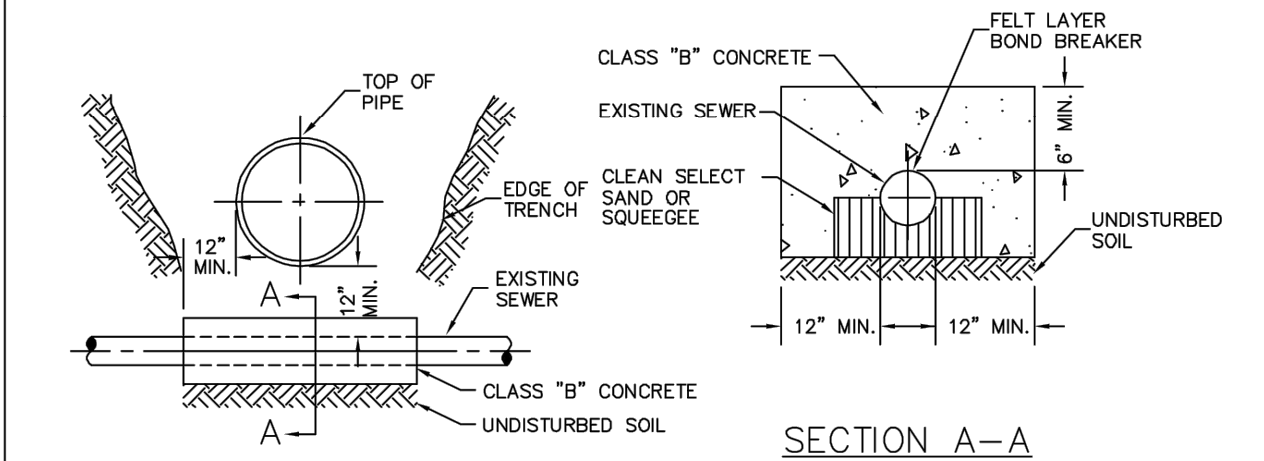
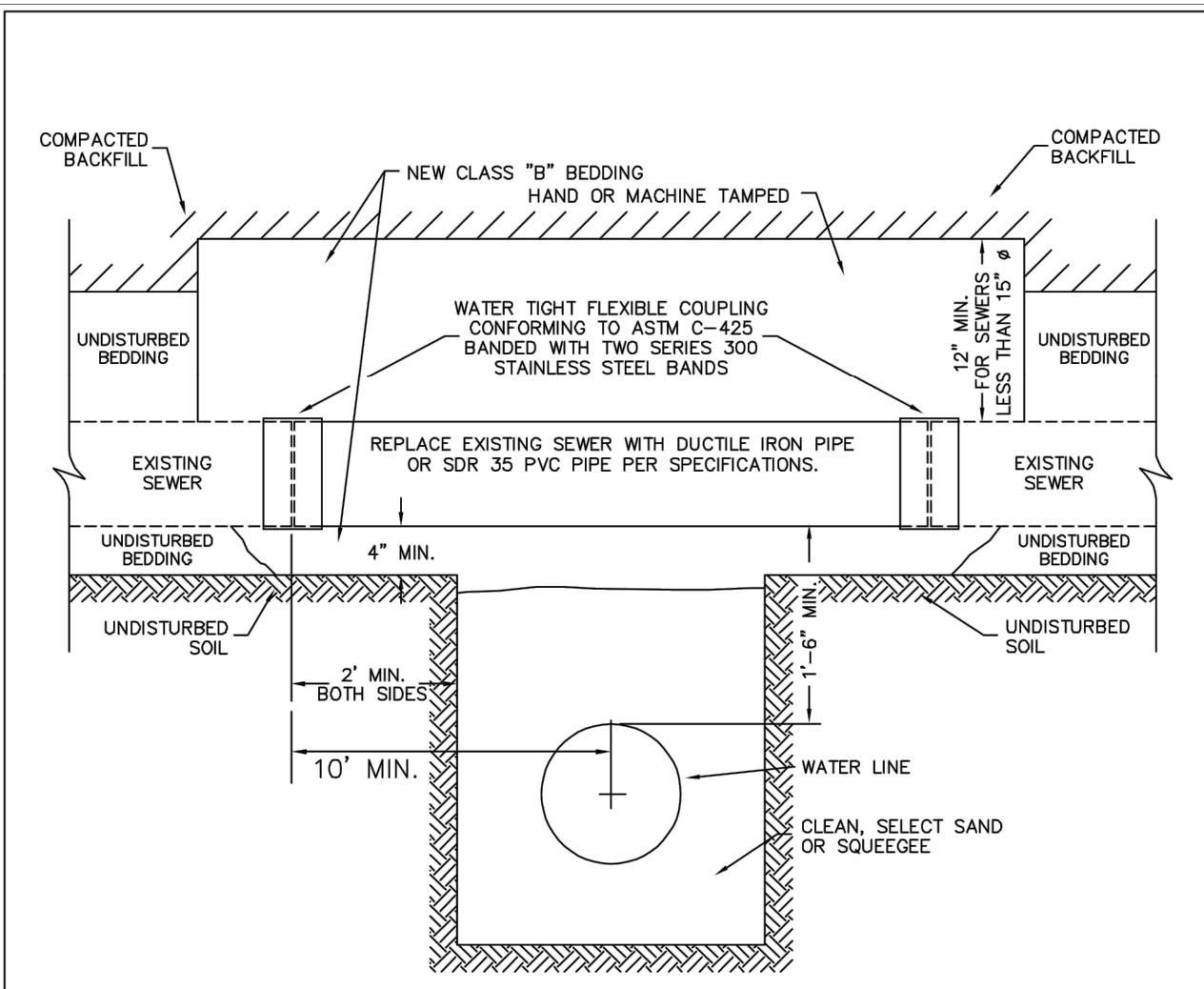
CONDUIT OR STORM SEWER CROSSING

PARKER WATER & SANITATION DISTRICT
CONDUIT OR STORM SEWER CROSSING

SCALE: NONE	DATE: 2/96
APPROVED: PVR	5/98 10/16 2/00 12/07 1/16
DIRECTOR OF ENGINEERING	

SHEET W4.6

2016 REVISION

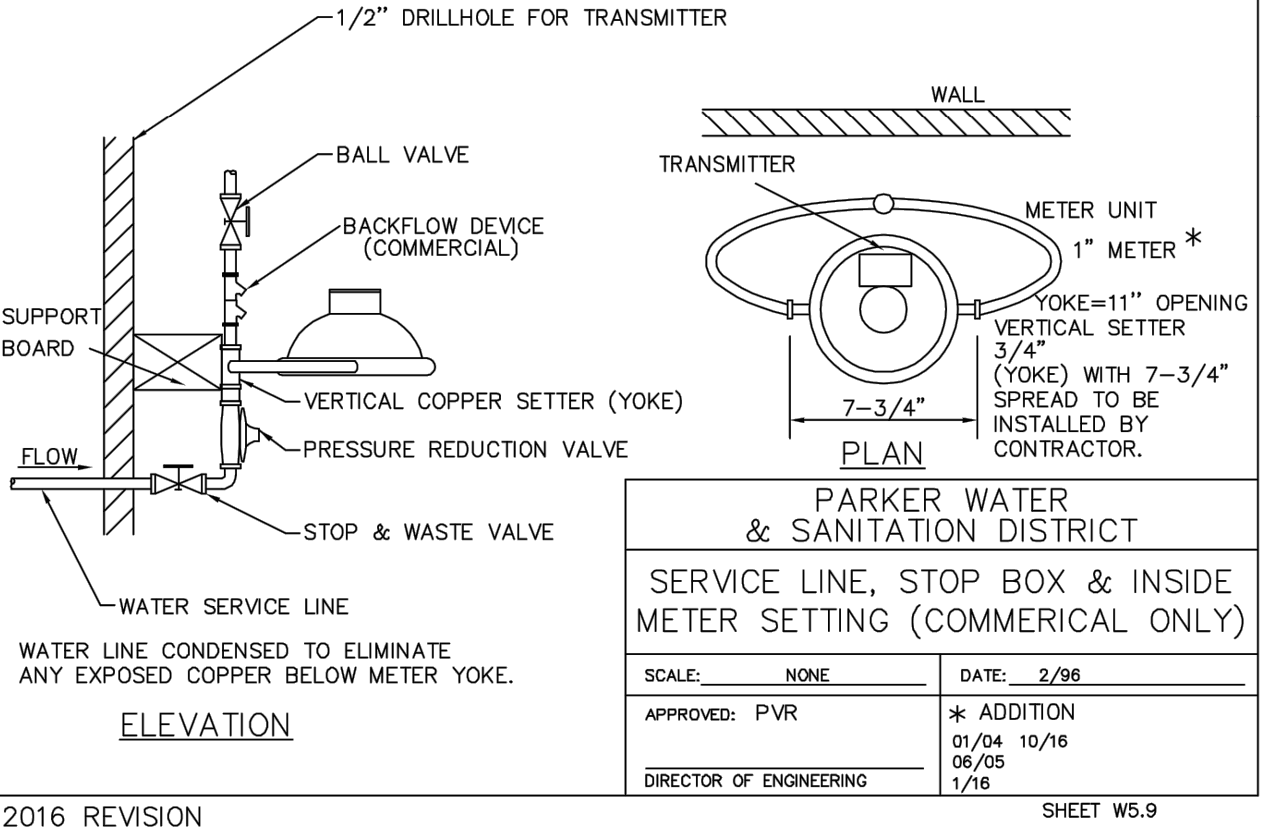
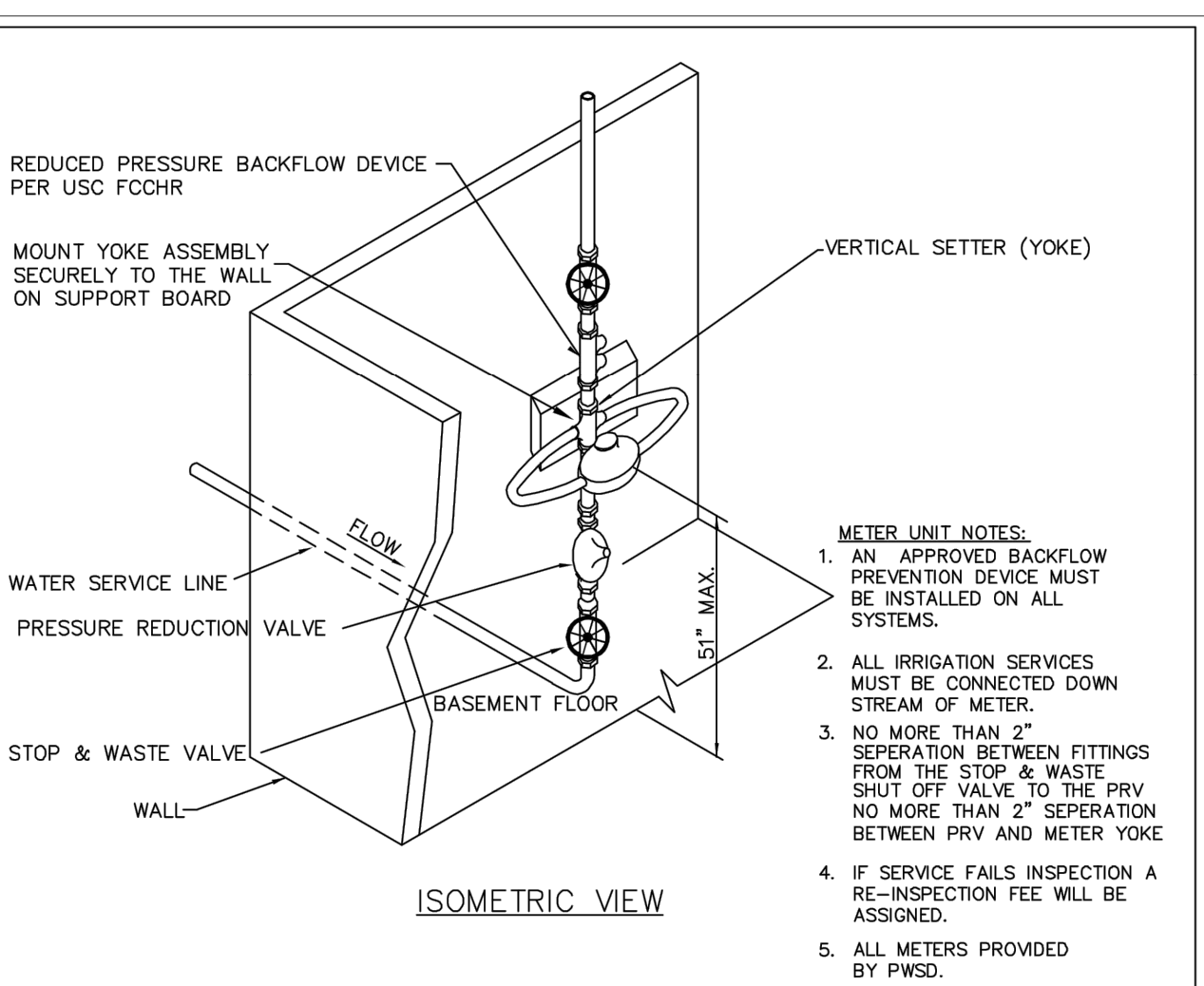


PARKER WATER & SANITATION DISTRICT
CROSSING STORM & SANITARY SEWERS

SCALE: NONE	DATE: 2/96
APPROVED: PVR	1/16 10/16
DIRECTOR OF ENGINEERING	

SHEET W4.7

2016 REVISION

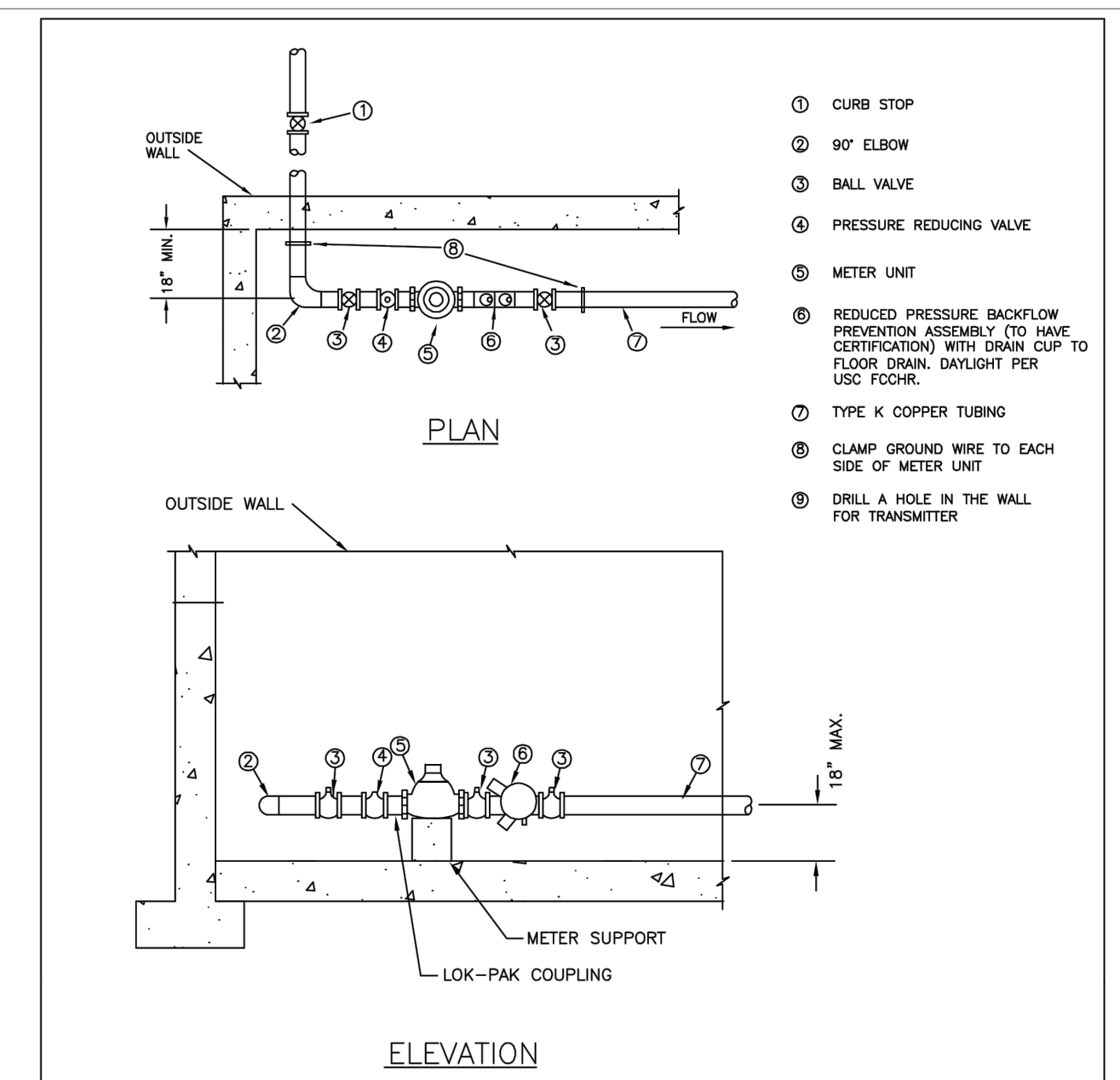


PARKER WATER & SANITATION DISTRICT
SERVICE LINE, STOP BOX & INSIDE METER SETTING (COMMERCIAL ONLY)

SCALE: NONE	DATE: 2/96
APPROVED: PVR	5/99 01/02 01/16 01/04 10/16 06/05 1/16
DIRECTOR OF ENGINEERING	

SHEET W5.9

2016 REVISION



PARKER WATER & SANITATION DISTRICT
INSIDE SETTING FOR 1 1/2 & 2\"/>

SCALE: NONE	DATE: 2/96
APPROVED: PVR	5/99 01/02 01/16 2/00 06/05 10/16 5/01 07/06
DIRECTOR OF ENGINEERING	

SHEET W5.14

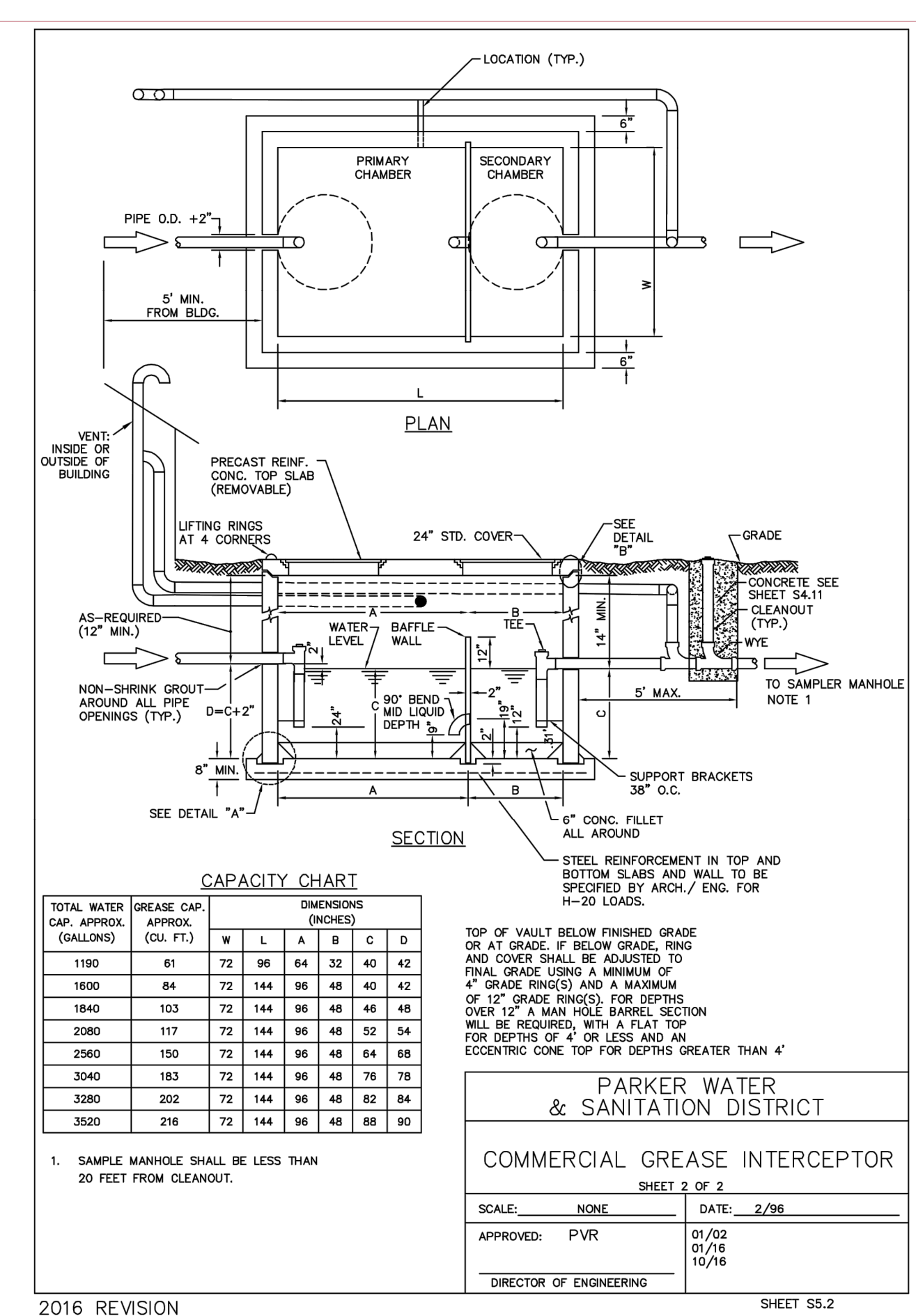
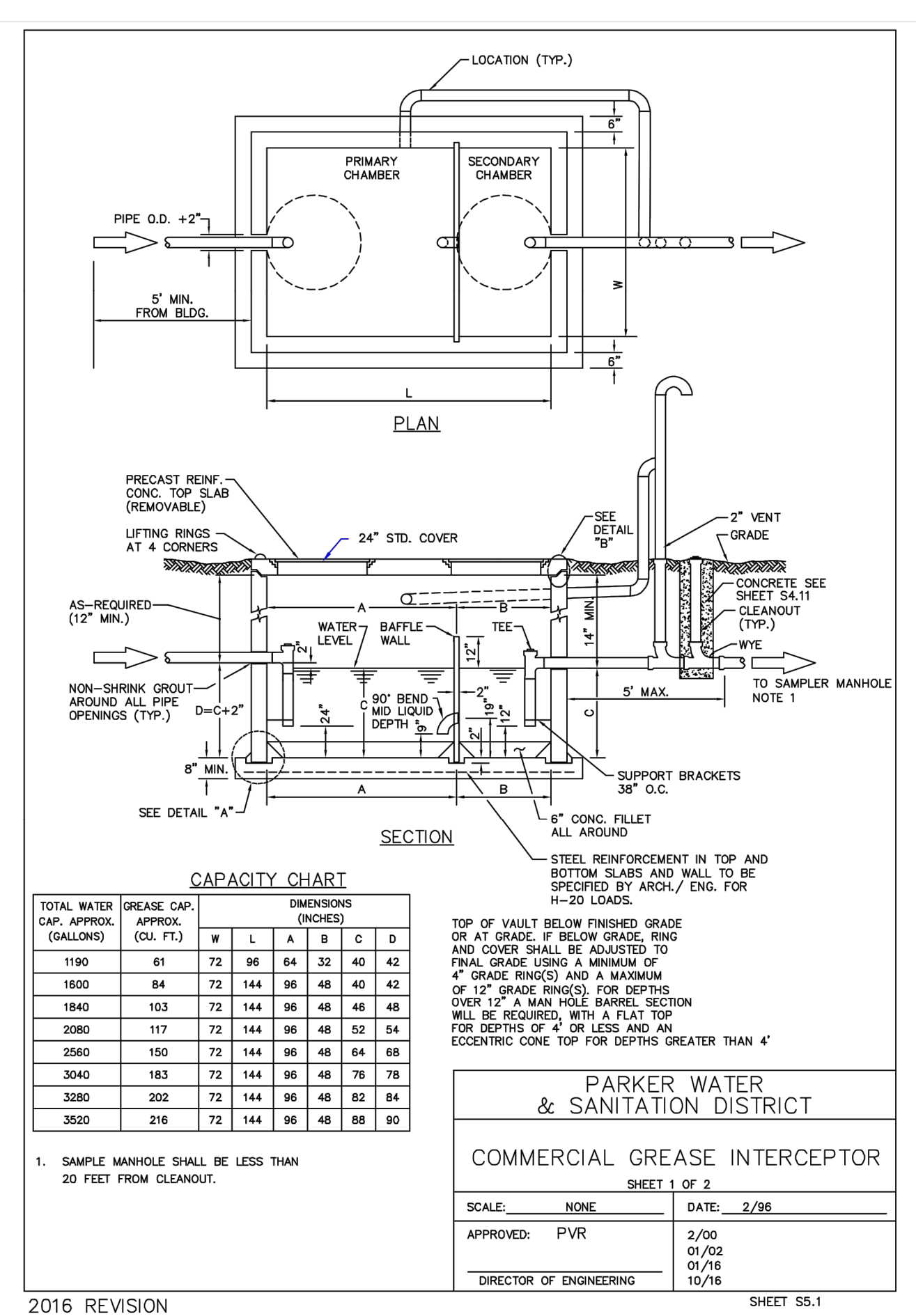
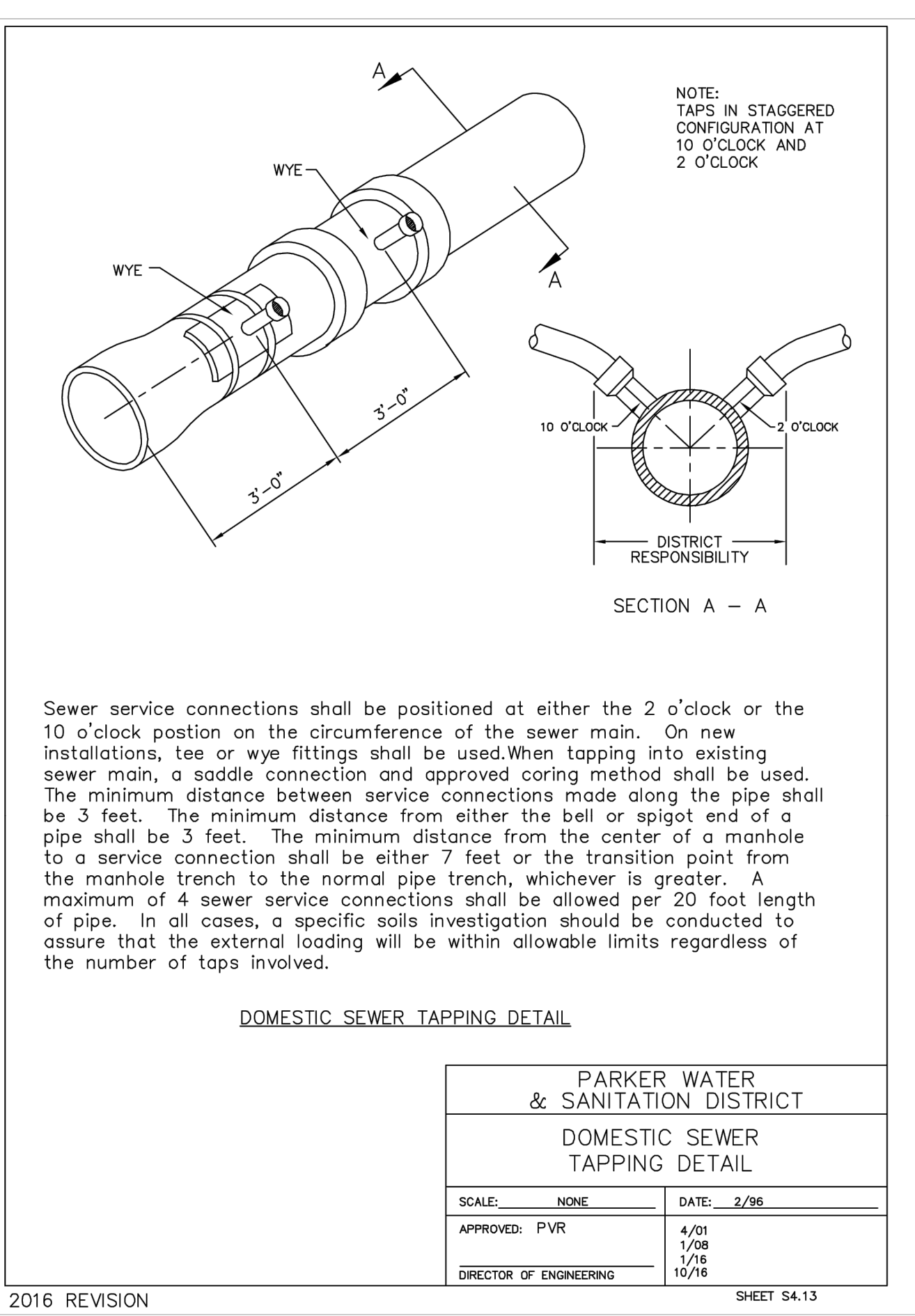
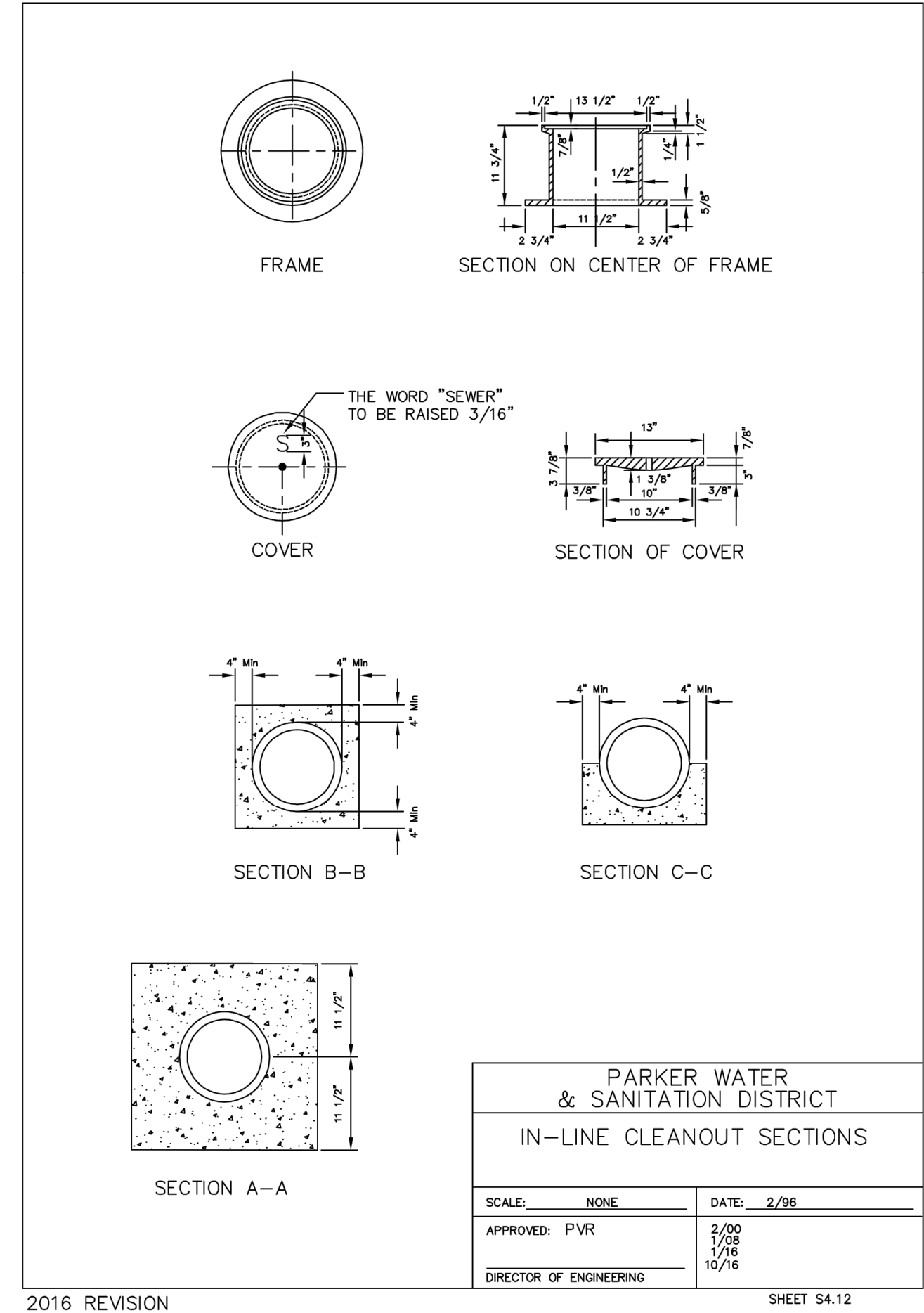
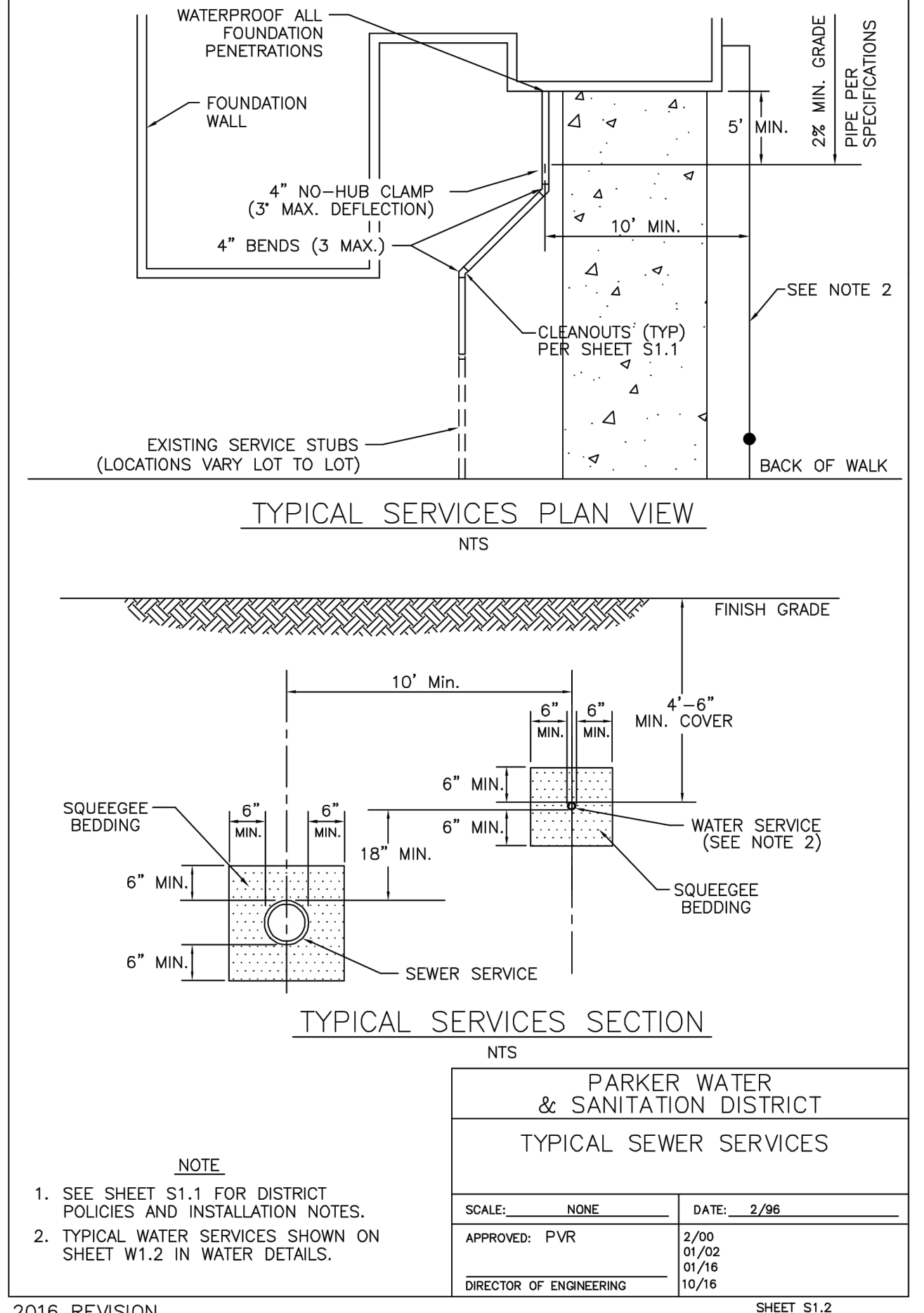
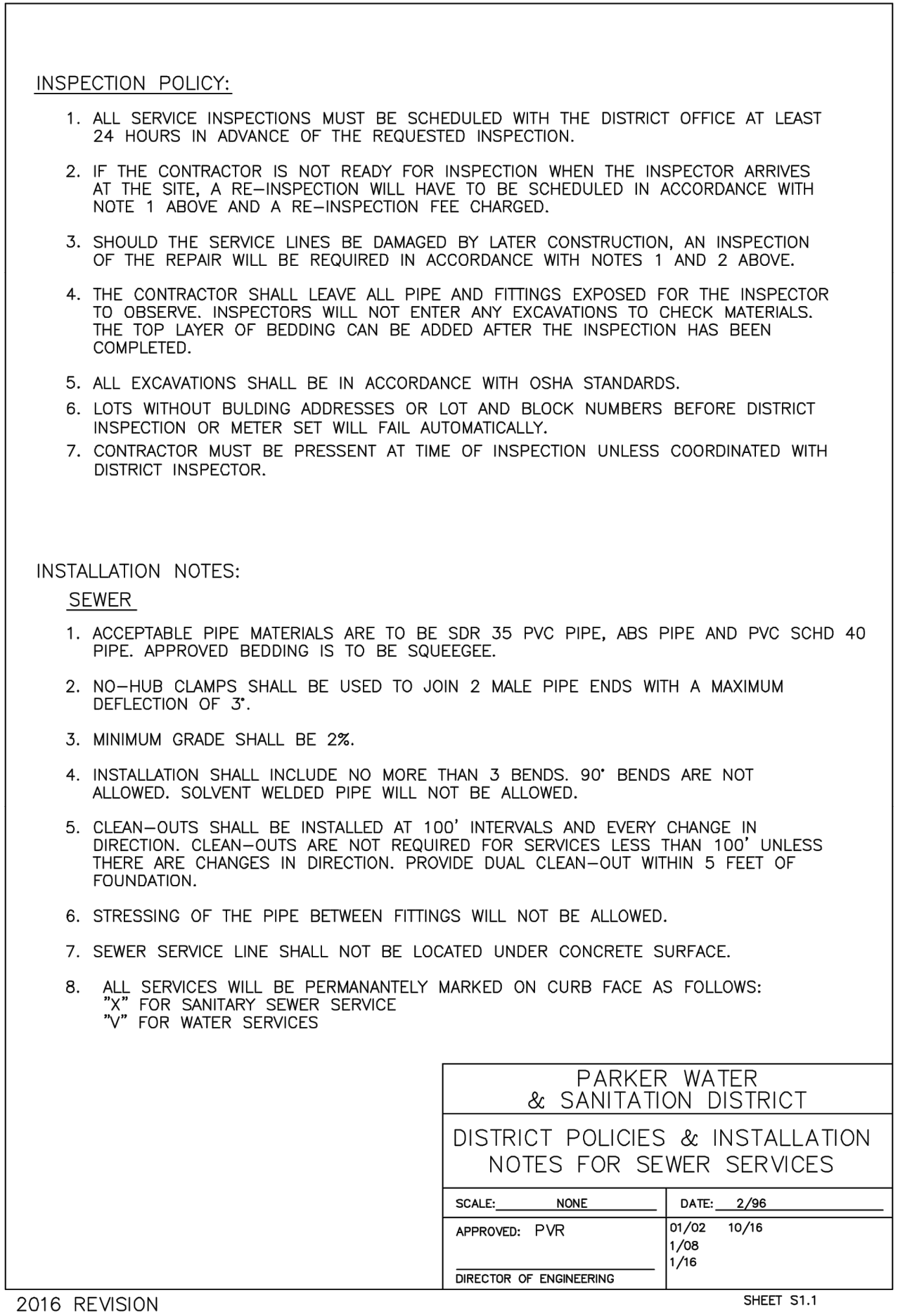
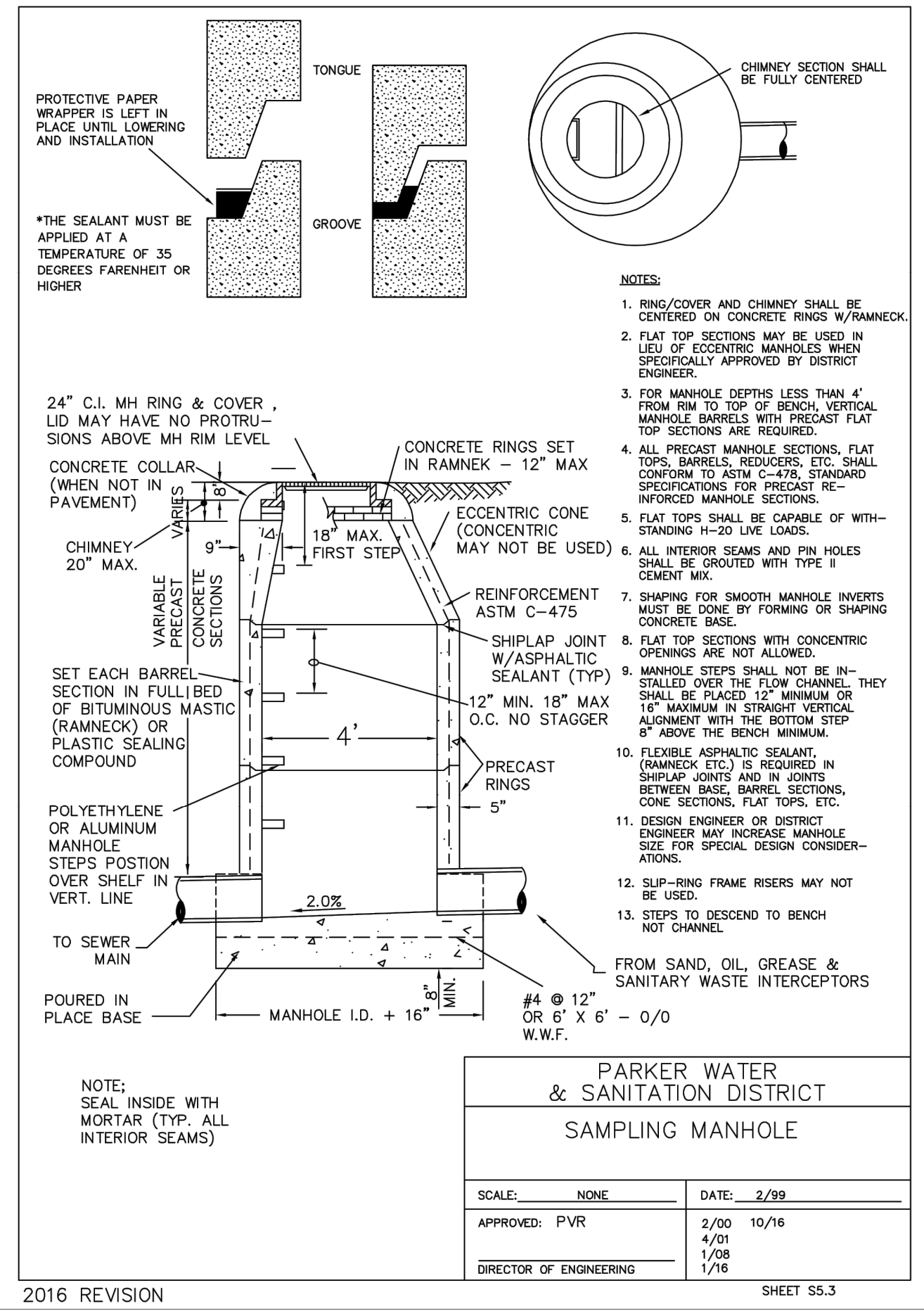
2016 REVISION

REV	DATE	DESCRIPTION
1	9/21/21	
2	11/22/21	
3	3/9/22	
REVISION #3		
REVISION #2		
REVISION #1		

Kimley»Horn

McDonald's USA, LLC
These drawings and specifications are the confidential and proprietary property of McDonald's USA, LLC and shall not be copied or reproduced without written authorization. The contract documents were prepared not suitable for use on a different site or at a later time. Use of these drawings for reference or example on another project requires the contract documents for reuse on another project is not authorized.

TITLE	UTILITY PLANS
DESCRIPTION	PWS DETAILS
SITE ADDRESS	LOT 3, DOUGLAS 234 FILING NO. 6
DATE	07/1/21
REVIEWED BY	JRH
DATE ISSUED	07/1/21
DRAWN BY	JJM
STD ISSUE DATE	07/1/21
PREPARED FOR:	McDonald's USA, LLC



McDonald's USA, LLC

Kimley»Horn

PREPARED BY: JMM
DRAWN BY: JMM
DATE: 07/1/21
DATE: 07/1/21
DATE: 07/1/21

REVISION #3 3/9/22
REVISION #2 11/22/21
REVISION #1 9/21/21

DATE: 07/1/21

DESCRIPTION: PWD DETAILS

UTILITY PLANS

LOT 3, DOUGLAS 234 FLNG. NO. 6

050785

C2.4