

November 22, 2022

**Town of Parker**  
**Planning Department**  
20120 E. Mainstreet  
Parker, CO 80138

**Subject:** *McDonald's Parker – Douglas 234 Field Change Narrative 1*

This memorandum provides a summary of the field change required for the proposed McDonald's under construction at 12201 Sliceroo Drive near the intersection of Chambers Road and Hess Road in the Douglas 234 commercial development.

### **Location**

The 1.204-acre Project is located on Lot 3 of the Douglas 234 Filing No. 6 commercial development located at the northeast corner of South Chambers Road and Hess Road in Parker, Colorado (the "Site"). The proposed Project consists of a new single-story McDonald's fast-food restaurant with dual drive-thru lanes, drive aisles, parking on the south, east, and west side of the building, landscaping, and associated utility improvements (the "Project").

### **Field Change Information**

During construction, it was discovered that the electrical cabinet was too close to the crew room window on the east elevation of the McDonald's building. Therefore, the crew room window was raised to have a header height of 10'-8".

### **Conclusion**

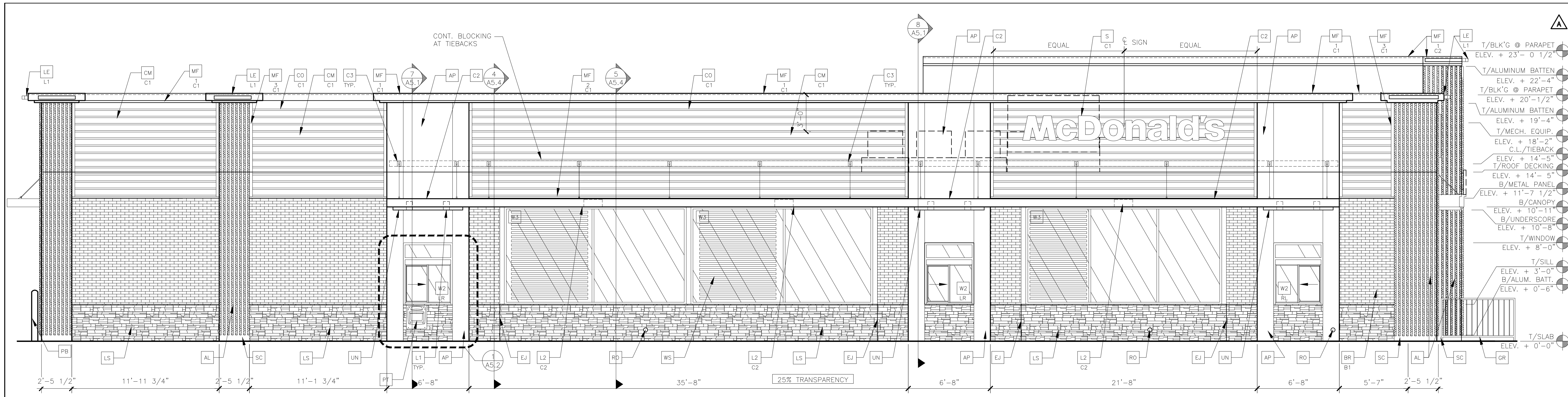
We hereby request that the field change information shown in this memorandum be approved by the Town of Parker.

Sincerely,

KIMLEY-HORN AND ASSOCIATES, INC.



Jessica McCallum, P.E.



1 DRIVE THRU ELEVATION (SOUTH)  
1/4" = 1'-0"

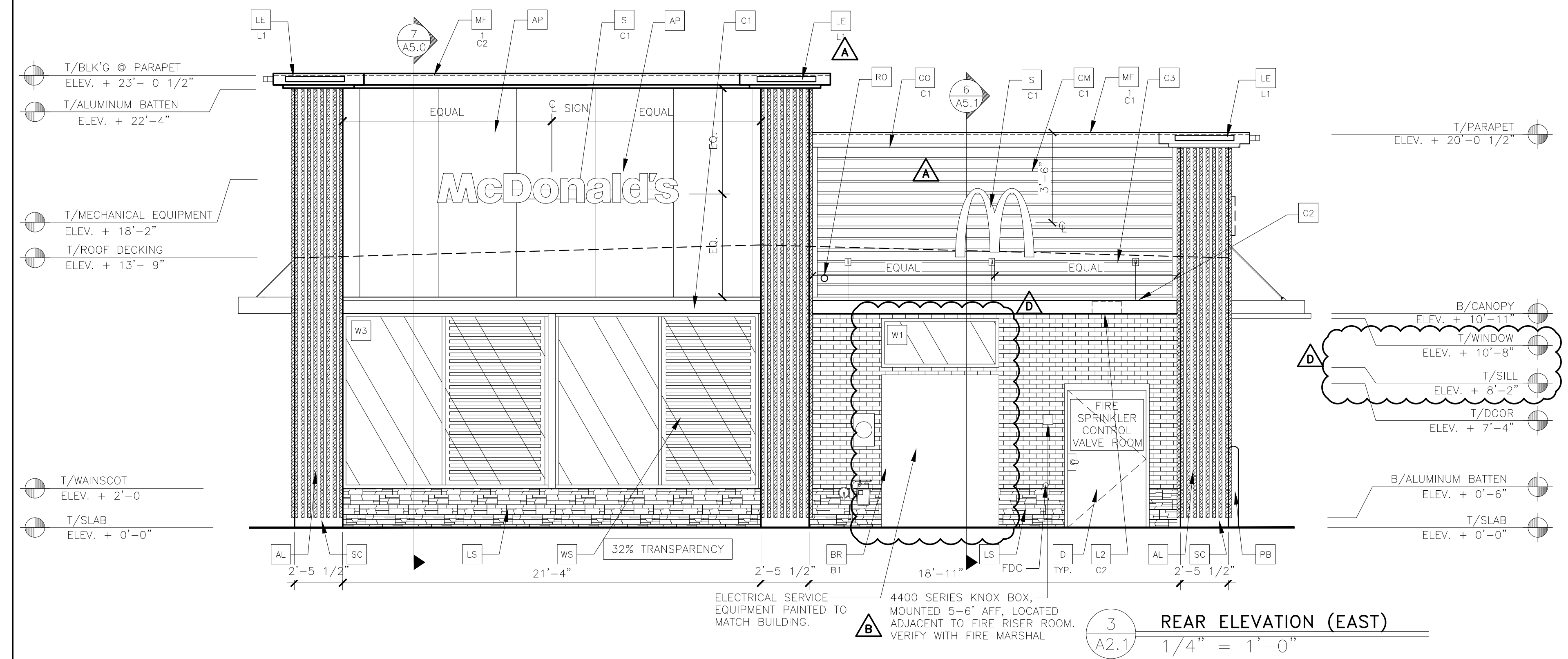
NOTE: WINDOWS NOTED TO BE BACKLIT WILL HAVE A CONCEALED LED STRIP LIGHT AT THE HEADER BETWEEN THE WINDOW AND THE DRYWALL BACKING.



**Final Document**  
**Subject To Conditions In Approval Letter**

**APPROVED DATE: 12/08/2022**

**Planning Approval By: J. Fettig**



3 REAR ELEVATION (EAST)  
1/4" = 1'-0"

- KEY NOTES:**
- AL ALUMINUM BATTEN SYSTEM  
SIZE: 2"x2" PROFILE  
COLOR: WOOD GRAIN, BACKRAIL UNFINISHED, ENDCAP PAINTED TO MATCH SUBSTRATE; 1/2" EXTERIOR HIGH DENSITY OVERLAY (HDO) PLYWOOD, BB, GROUP 1, HDO BOTH FACES, APA TRADEMARKED, COURSE GRIT SAND SURFACES PRIOR TO PRIMING, PRIME AND PAINT BOTH SIDES AND ALL EDGES.  
SUBSTRATE COLOR: "IRON ORE" 7069 BY SHERWIN WILLIAMS
  - AP ALPOLIC METAL PANEL (COLOR: RAL 7022)
  - BM BRAKE METAL PANEL  
COLOR: PAINT "HARVEST MOON" #232-5 BY VALSPAR
  - BR MODULAR FACE BRICK  
BT-COLOR:  
B1 = "ONYX" SMOOTH, BY SUMMIT BRICK
  - C1 ALUMINUM CANOPY SYSTEM W/FASCIA  
COLOR: WHITE
  - C2 ALUMINUM CANOPY SYSTEM  
COLOR: RAL 7022
  - C3 ALUMINUM CANOPY TIEBACK  
COLOR: RAL 7022  
GC TO PROVIDE CONTINUOUS BLOCKING ON WALL BEHIND TIEBACKS
  - CJ CONTROL JOINT  
1-TYPE: 1 = ALPOLIC
  - CM 7" REVEAL METAL WALL PANEL SYSTEM BY METAL ERA  
C1-COLOR:  
C1 = WEATHERED ZINC
  - CO CORNICE  
C1-COLOR: WEATHER ZINC
  - D HOLLOW METAL DOOR  
PAINT: "GAUNTLET GRAY" SW-7017 BY SHERWIN WILLIAMS
  - DE DECAL BY GRAPHICS SUPPLIER  
SURFACE APPLIED, FIELD INSTALLED, PRE CUT, PRE SPACED.  
SUPPLIERS:  
VOMELA (865) 330-7337, ann.bowen@vomela.com  
GFX INTERNATIONAL (847) 543-4600, mcdonaldsdecor@gfx.com
  - EJ EXPANSION JOINT, SEE DETAIL 7/A4.1
  - FB CO2 = BULK CO2 FILL BOX (EQPM SCHEDULE ITEM 49.00)  
BO = BULK OIL FILL BOX (EQPM SCHEDULE ITEM 700.18)
  - GR GUARD RAIL -SEE CIVIL SITE PLAN FOR EXACT LOCATION AND LENGTH  
PAINT: "IRON ORE" 7069 BY SHERWIN WILLIAMS
  - L1 RECESSED DOWN LIGHT FIXTURE - SEE ELECTRICAL  
COLOR: GOLD
  - L2 RADIAL SCENCE LIGHT FIXTURE - SEE ELECTRICAL  
C1-COLOR:  
C1 = WHITE  
C2 = PLATINUM SILVER
  - LE ACCENT LIGHTING - SEE ELECTRICAL  
L1-LED LIGHT:  
L1 = SUM LED (DOWN ONLY)  
L2 = INTEGRAL CANOPY FIXTURE  
L3 = UP ONLY FLOOD FIXTURE
  - LS HERITAGE THIN STONE BY TELLURIDE  
COLOR: BILTMORE  
(TO BE VERIFIED WITH McDONALDS ACM)
  - MF METAL FASCIA  
1-TYPE:  
1 = PRE-FAB ANCHOR-TITE FASCIA  
2 = BOTTOM TRIM AT METAL REVEAL PANEL  
3 = VERTICAL TRIM AT METAL REVEAL PANEL CORNERS, CLOSURES  
COLOR:  
C1 = WEATHERED ZINC (FLAT FACTORY FINISHED)  
C2 = RAL 7022 (FLAT FACTORY FINISHED)
  - PB PIPE BOLLARD - PAINTED YELLOW
  - PT (RMHC) COIN COLLECTOR  
MODEL: #WPT STD CALL 1-888-743-7435 TO ORDER
  - RO ROOF DRAIN OVERFLOW PIPE PAINT TO MATCH SURROUNDING MATERIAL
  - S McDONALD'S SIGNAGE BY OTHERS - UNDER SEPARATE PERMIT.  
C1-COLOR:  
C1 = WEATHERED ZINC RACEWAY  
C2 = RAL 7022 RACEWAY
  - SC STUCCO  
C1-PAINT TO MATCH HARDIE PLANK SIDING OR GAUNTLET GRAY SW7019 BY SHERWIN WILLIAMS
  - SP SPANDREL GLASS
  - UN METAL UNDERSCORE  
COLOR: GOLD
  - W1 EXTERIOR WINDOW ASSEMBLY - TEMPERED GLASS  
COLOR: DARK BRONZE
  - W2 DRIVE-THRU WINDOW BY READY ACCESS  
MODEL: 600 SERIES, 36" SERVICE HEIGHT WITH TRANSOM, MANUAL OPEN; ELECTRONIC RELEASE  
COLOR: DEEP BRONZE  
SLIDE DIRECTION: RL = RIGHT TO LEFT  
LR = LEFT TO RIGHT
  - W3 EXTERIOR WINDOW ASSEMBLY - TEMPERED GLASS  
COLOR: DARK BRONZE  
BACK LIT GLAZING
  - W5 INTERIOR WINDOW SHADE - BY DECOR

STATE OF COLORADO	PATRICK G. BLEES	400150	11/22/22
CORE STATES GROUP	11 Parker Ave. Suite 400	472.247.3300	corestates.com
PREPARED FOR:	McDonald's USA, LLC	© 2022 McDonald's USA, LLC	These drawings and specifications are the confidential and proprietary property of McDonald's USA, LLC and shall not be copied or reproduced without written authorization. The contract documents were prepared not suitable for use on a different site or at a later time. Use of these drawings for reference or example on another project requires the the contract documents for reuse on another project is not authorized.
DRAWN BY:	B.ARDALLA	2021_05	
STD ISSUE DATE:	2021_05		
REVIEWED BY:	MARC PELINI	DATE ISSUED:	12/17/21
C.S.G. PROJECT #	MCD_32406		
TITLE	2017 STANDARD BUILDING - BB20		
DESCRIPTION	4597 - WOOD/WOOD		
SHEET NO.	A2.1		
ELEVATIONS			