

LEGEND

- ■ ■ ■ ■ PROPERTY LINE
- - - - - EASEMENT
- - - - - 5430 - EXISTING MAJOR CONTOUR
- - - - - 5431 - EXISTING MINOR CONTOUR
- 5430 — PROPOSED MAJOR CONTOUR
- 5431 — PROPOSED MINOR CONTOUR
- ▭ LANDSCAPE
- ▭ CONCRETE
- W EX. WATER LINE
- S EX. SANITARY LINE
- EX. STORM SEWER
- EX. PHONE LINE
- E EX. ELECTRIC LINE
- G EX. GAS LINE
- W PROP. WATER LINE
- S PROP. SANITARY LINE
- PROP. STORM SEWER
- PROP. PHONE LINE
- E PROP. ELECTRIC LINE
- G PROP. GAS LINE

CAUTION NOTES:

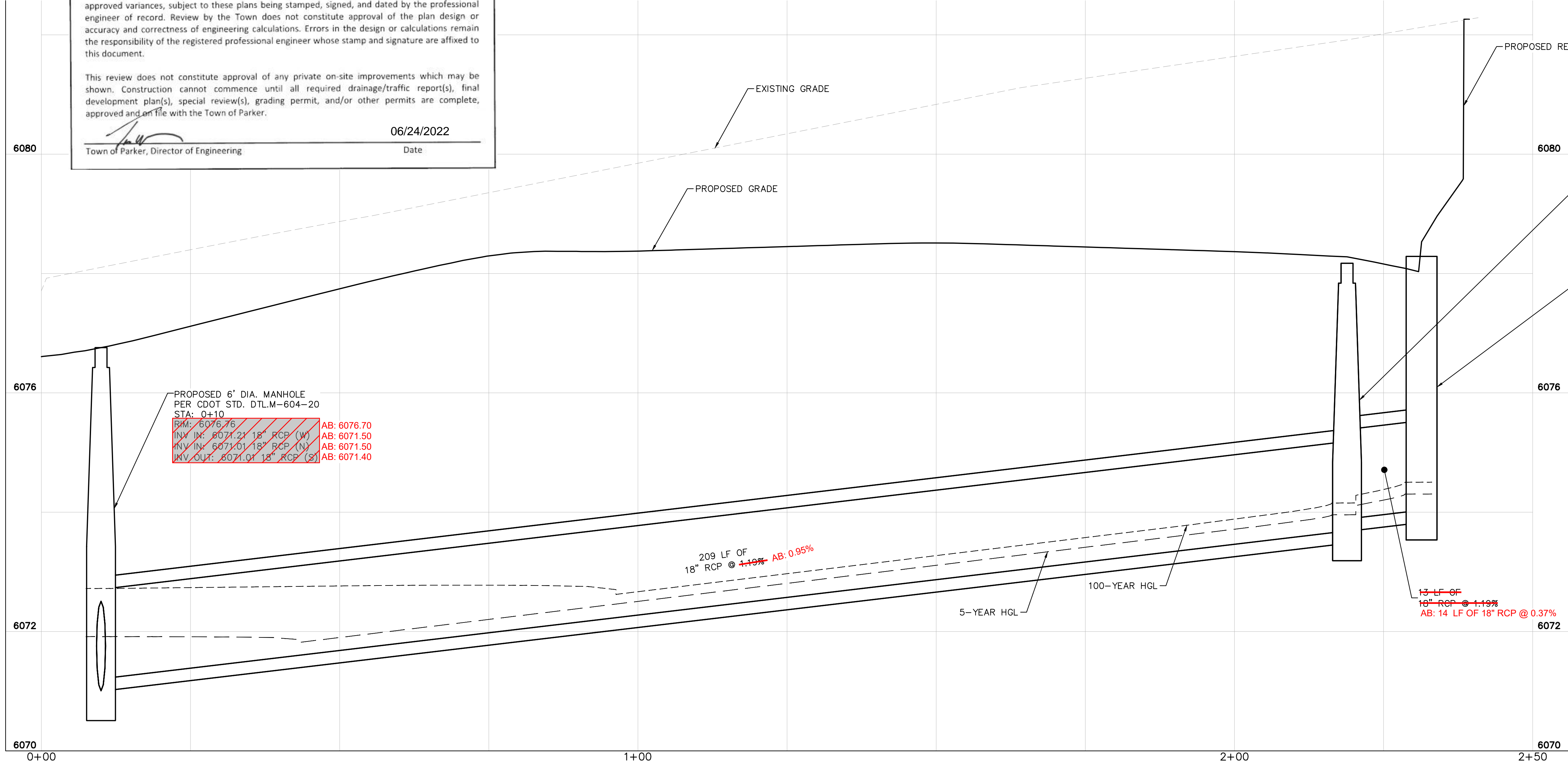
- CONTRACTOR TO VERIFY TIE IN LOCATIONS TO EXISTING UTILITIES.
- CONTRACTOR TO MAINTAIN AT LEAST 18" OF VERTICAL SEPARATION BETWEEN UTILITIES.

STORM SEWER A PLAN VIEW

The Town of Parker review constitutes general compliance with the Town's Standards and approved variances, subject to these plans being stamped, signed, and dated by the professional engineer of record. Review by the Town does not constitute approval of the plan design or accuracy and correctness of engineering calculations. Errors in the design or calculations remain the responsibility of the registered professional engineer whose stamp and signature are affixed to this document.

This review does not constitute approval of any private on-site improvements which may be shown. Construction cannot commence until all required drainage/traffic report(s), final development plan(s), special review(s), grading permit, and/or other permits are complete, approved and on file with the Town of Parker.

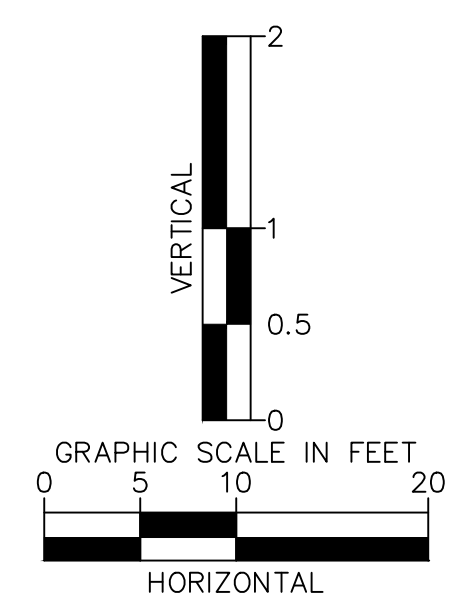
[Signature]
Town of Parker, Director of Engineering
Date: 06/24/2022



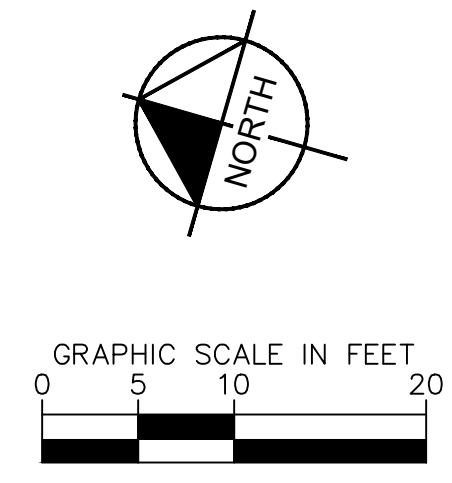
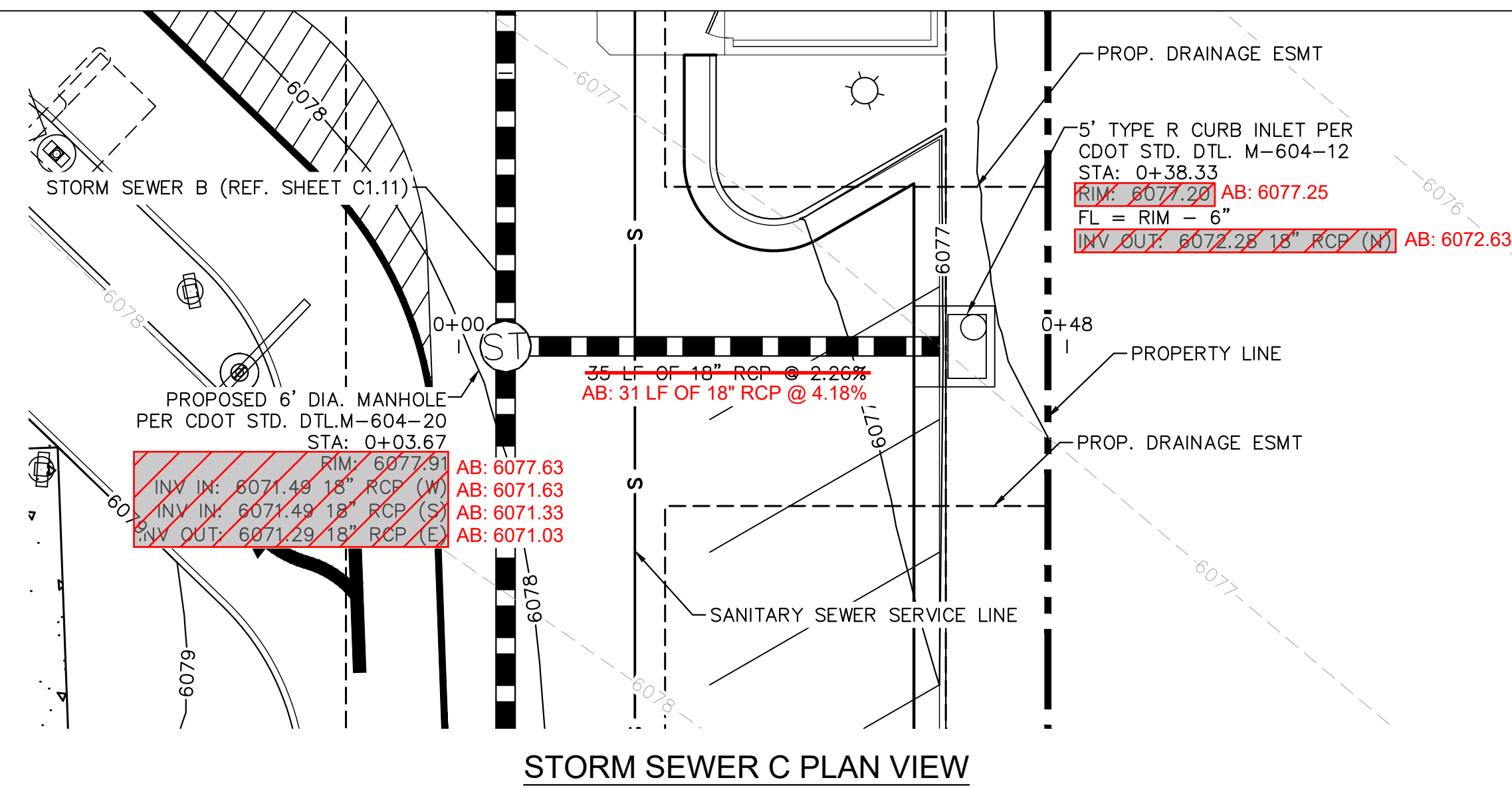
STORM SEWER A PROFILE VIEW

RECORD DRAWING

THESE RECORD DRAWINGS HAVE BEEN PREPARED BY KIMLEY-HORN AND ASSOCIATES, INC. BASED ON SURVEY INFORMATION PROVIDED BY COMPASS SURVEYING & MAPPING, LLC DATED 11/02/23. THESE RECORD DRAWINGS ARE NOT GUARANTEED TO BE "AS-BUILT", BUT RATHER BASED ON THE INFORMATION MADE AVAILABLE.



TITLE	CONSTRUCTION DOCUMENTS		REVISION #4	JJM	BY
	DESCRIPTION		REVISION #3	JJM	
	STORM SEWER A PLAN AND PROFILE VIEW		REVISION #2	JJM	
	SITE ADDRESS		REVISION #1	JJM	
SITE ID		DATE	REV	DESCRIPTION	
0050785		12/20/21	1	9/27/21	
12201 SLICEROO DRIVE, PARKER, CO					
		<p>PREPARED FOR: McDonald's USA, LLC</p> <p>These drawings and specifications are the confidential and proprietary property of McDonald's USA, LLC and shall not be copied or reproduced without written authorization. The contract documents were prepared not suitable for use on a different site or at a later time. Use of these drawings for reference or example on another project requires the contract documents for reuse on another project is not authorized.</p>			
		<p>DRAWN BY: JJM</p> <p>STD ISSUE DATE: 07/1/21</p> <p>REVIEWED BY: JRH</p> <p>DATE ISSUED: 07/1/21</p>			
		<p>811 Know what's below. Call before you dig.</p>			
		<p>C1.10</p>			



LEGEND

—	PROPERTY LINE
- - -	EASEMENT
---	EXISTING MAJOR CONTOUR
---	EXISTING MINOR CONTOUR
---	5430 PROPOSED MAJOR CONTOUR
---	5431 PROPOSED MINOR CONTOUR
[Symbol]	LANDSCAPE
[Symbol]	CONCRETE
W	EX. WATER LINE
S	EX. SANITARY LINE
---	EX. STORM SEWER
---	EX. PHONE LINE
E	EX. ELECTRIC LINE
G	EX. GAS LINE
W	PROP. WATER LINE
S	PROP. SANITARY LINE
---	PROP. STORM SEWER
---	PROP. PHONE LINE
E	PROP. ELECTRIC LINE
G	PROP. GAS LINE

CAUTION NOTES:

- CONTRACTOR TO VERIFY TIE IN LOCATIONS TO EXISTING UTILITIES.
- CONTRACTOR TO MAINTAIN AT LEAST 18" OF VERTICAL SEPARATION BETWEEN UTILITIES.

PROPOSED 6" DIA. MANHOLE PER CDOT STD. DTL.M-604-20 STA: 0+03.67

RIM: 6077.31

INV. IN: 6071.49 18" RCP (W) AB: 6071.63

INV. IN: 6071.49 18" RCP (S) AB: 6071.33

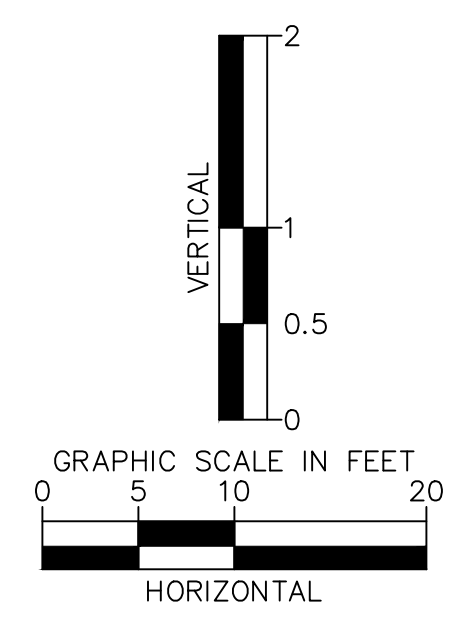
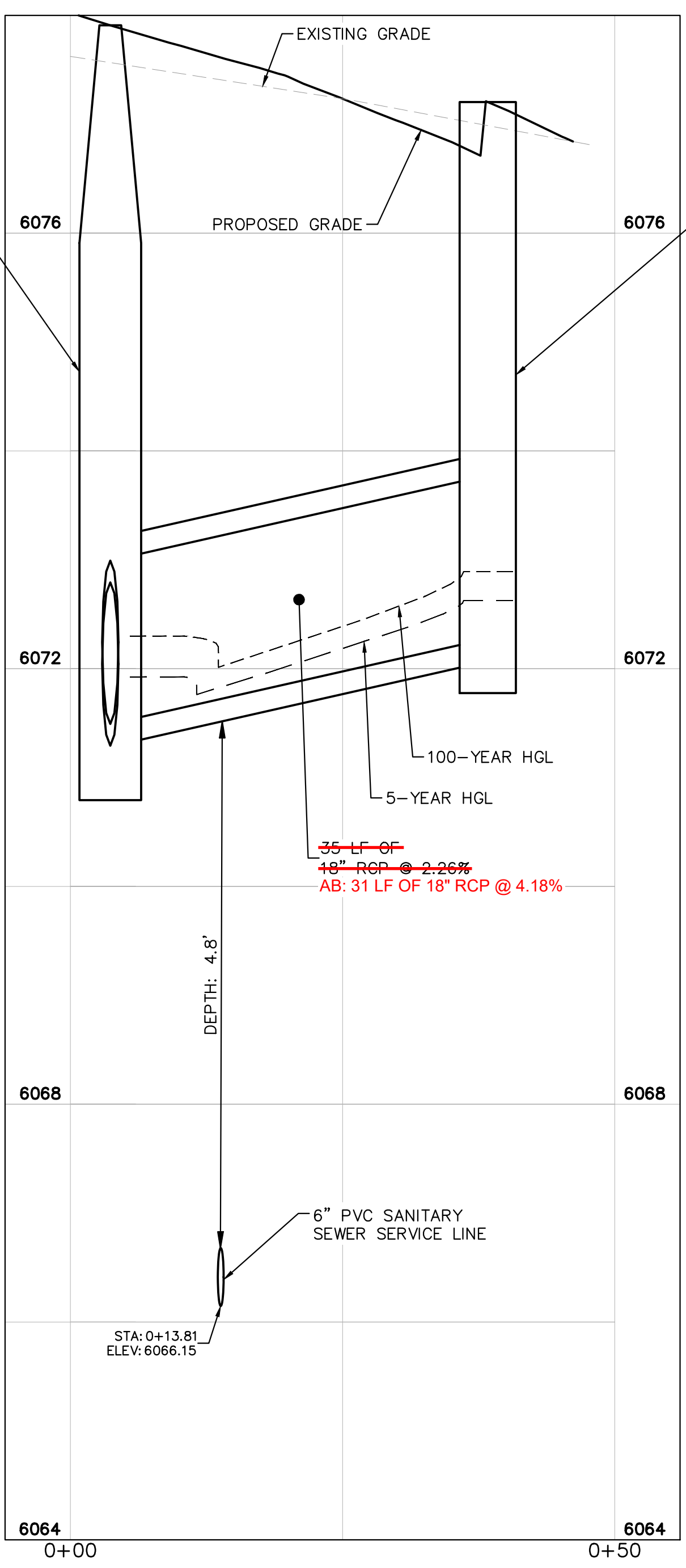
INV. OUT: 6071.29 18" RCP (E) AB: 6071.03

5' TYPE R CURB INLET PER CDOT STD. DTL. M-604-12 STA: 0+38.33

RIM: 6077.20 AB: 6077.25

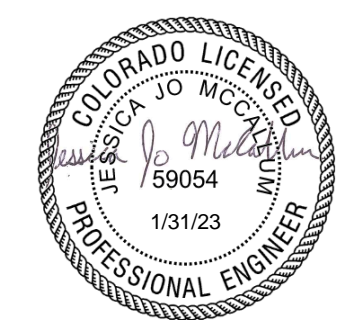
FL = RIM - 6"

INV. OUT: 6072.28 18" RCP (N) AB: 6072.63



RECORD DRAWING

THESE RECORD DRAWINGS HAVE BEEN PREPARED BY KIMLEY-HORN AND ASSOCIATES, INC. BASED ON SURVEY INFORMATION PROVIDED BY COMPASS SURVEYING & MAPPING, LLC DATED 1/10/23. THESE RECORD DRAWINGS ARE NOT GUARANTEED TO BE "AS-BUILT", BUT RATHER BASED ON THE INFORMATION MADE AVAILABLE.



The Town of Parker review constitutes general compliance with the Town's Standards and approved variances, subject to these plans being stamped, signed, and dated by the professional engineer of record. Review by the Town does not constitute approval of the plan design or accuracy and correctness of engineering calculations. Errors in the design or calculations remain the responsibility of the registered professional engineer whose stamp and signature are affixed to this document.

This review does not constitute approval of any private on-site improvements which may be shown. Construction cannot commence until all required drainage/traffic report(s), final development plan(s), special review(s), grading permit, and/or other permits are complete, approved and on file with the Town of Parker.

Town of Parker, Director of Engineering

06/24/2022

Date

DRAWN BY		JJM
STD ISSUE DATE		07/1/21
REVIEWED BY		JRH
DATE ISSUED		07/1/21
TITLE		CONSTRUCTION DOCUMENTS
DESCRIPTION		STORM SEWER C PLAN AND PROFILE VIEW
SITE ID		0050785
SITE ADDRESS		12201 SLICEROOD DRIVE, PARKER, CO
PREPARED FOR:	McDonald's USA, LLC	
PREPARED BY:	Jessica Jo McDonald	
PROFESSIONAL ENGINEER		
LICENSE NO.		59054
EXPIRES		6/21/22
REVISION #	DATE	DESCRIPTION
4	4/8/22	REVISION #4
3	3/9/22	REVISION #3
2	11/22/21	REVISION #2
1	9/27/21	REVISION #1
REV	DATE	DESCRIPTION
JJM		BY
JJM		
JJM		
JJM		

