

# UTILITY PLANS

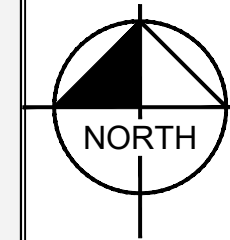
## MCDONALD'S CHAMBERS

DOUGLAS 234, FILING NO. 6, BLOCK 1, LOT 3  
NEC CHAMBERS ROAD AND HESS ROAD  
PARKER, CO

| SHEET INDEX  |              |
|--------------|--------------|
| SHEET NUMBER | SHEET TITLE  |
| PWSD         |              |
| C2.0         | COVER SHEET  |
| C2.1         | NOTES        |
| C2.2         | UTILITY PLAN |
| C2.3         | PWSD DETAILS |
| C2.4         | PWSD DETAILS |



VICINITY MAP



**PROJECT CONTACTS:**

**DEVELOPER:**  
MCDONALD'S USA, LLC  
4643 S. ULSTER STREET, SUITE 1300  
DENVER, CO 80237  
TEL: (303) 519-4001  
CONTACT: KORTNEY PEDIGO

**ARCHITECT:**  
CORESTATES GROUP  
135 WATER STREET, SUITE 201  
NAPERVILLE, IL 60540  
TEL: (224) 585-4582  
CONTACT: KELLY TESKA

**ENGINEER:**  
KIMLEY-HORN AND ASSOCIATES, INC.  
2 NEVADA NORTH AVE., SUITE 300  
COLORADO SPRINGS, CO 80903  
TEL: (719) 453-0180  
CONTACT: JESSICA MCCALLUM, P.E.

**SURVEYOR:**  
ENGINEERING SERVICE CO.  
14190 EAST EVANS AVENUE  
AURORA CO, 80014  
TEL: (719) 582-1270  
CONTACT: CHIP BECKSTROM, P.L.S.

**LANDSCAPE ARCHITECT:**  
KIMLEY-HORN AND ASSOCIATES, INC.  
2 NEVADA NORTH AVE., SUITE 300  
COLORADO SPRINGS, CO 80903  
TEL: (719) 453-0180  
CONTACT: JEREMY POWELL, P.L.A.

**MUNICIPAL CONTACT LIST:**

**TOWN OF PARKER**

**PLANNING AND INSPECTIONS DEPARTMENT**  
PLANNING DIVISION  
20120 E MAINSTREET  
PARKER, CO 80138  
TEL: (303) 805-3338  
CONTACT: BRIANNA SIMON

**PLANNING AND INSPECTIONS DEPARTMENT-INSPECTIONS DIVISION**  
20120 E MAINSTREET  
PARKER, CO 80138  
TEL: TBD  
CONTACT: TBD

**CAPITAL IMPROVEMENT PROJECTS/ENGINEERING DEPARTMENT**  
20120 E MAINSTREET  
PARKER, CO 80138  
TEL: (303) 940-9546  
CONTACT: TYLER SANDT

**TRANSPORTATION DEPARTMENT**  
COLORADO DEPARTMENT OF TRANSPORTATION  
TEL: (303) 757-9356  
CONTACT: RICK SOLOMON

**CITY FIRE DEPARTMENT**  
20120 E MAINSTREET  
PARKER, CO 80138  
TEL: (303) 805-3169  
CONTACT: RANDY CAPRA

**PARKER WATER AND SANITATION DISTRICT**  
18100 E WOODMAN DRIVE  
PARKER, CO 80134  
TEL: (303) 841-4627  
CONTACT: DRAYTON SANDERSON

**GAS COMPANY**  
XCEL ENERGY  
1800 LARIMER STREET  
DENVER, CO 80202  
TEL: (800) 895-1999  
CONTACT: RON JOHNSON

**ELECTRIC COMPANY**  
IREA  
5496 US HWY 85  
SEDALIA, CO 80135  
TEL: (720) 733-5493  
CONTACT: BROOKS KAUFMAN

**TELEPHONE COMPANY**  
CENTURY LINK  
1801 CALIFORNIA STREET, SUITE 240  
DENVER, CO 80202  
TEL: (855) 891-4083  
CONTACT: IZZY MILLER

**BENCHMARK**

BENCHMARK: NGS DESIGNATION C 355 (PID:KK0205); STANDARD NGS BM LOCATED 2 MI SE FROM SEDALIA, 2.0 MILES SOUTHEAST ALONG THE DENVER AND RIO GRANDE WESTERN RAILROAD FROM THE STATION AT SEDALIA, 0.5 MILE NORTHWEST OF MILEPOST 27, 32 FEET NORTH OF THE NORTH RAIL, 53 FEET SOUTH OF THE CENTER LINE OF U.S. HIGHWAY 85, 2 FEET WEST OF A WITNESS POST, SET IN THE TOP OF A CONCRETE POST WHICH PROJECTS 0.4 FOOT ABOVE THE GROUND.

**BASIS OF BEARINGS**

BEARINGS ARE BASED ON THE SOUTH LINE OF THE SE 1/4 OF SECTION 29, T.6S., R.66W., OF THE 6TH P.M. BEARING S89°35'27"W AND BOUNDED BY A 3 1/4" ALUMINUM CAP AT THE S 1/4 CORNER OF SECTION 29 AND A 3 1/4" ALUMINUM CAP AT THE SE CORNER OF SECTION 29. THE MONUMENTS ARE STAMPED AS SHOWN HEREON.

**LEGAL DESCRIPTION**

LOT 3, DOUGLAS 234, FILING NO. 6 WITHIN A PORTION OF THE SOUTHEAST 1/4 OF THE SECTION 29, TOWNSHIP 6 SOUTH, RANGE 66 WEST OF THE 6TH P.M. TOWN OF PARKER, COUNTY OF DOUGLAS, STATE OF COLORADO

**DISTRICT ACCEPTANCE NOTE**

- UPON COMPLETION OF SANITARY AND WATER CONSTRUCTION AND TESTING, THE DEVELOPER OR CONTRACTOR SHALL CONTACT THE DISTRICT FOR PROBATIONARY ACCEPTANCE INSPECTION. A PUNCHLIST WILL BE PROVIDED FOR THE DEVELOPER AND CONTRACTOR UPON COMPLETION OF THE INITIAL WALK-THRU AND PROBATIONARY ACCEPTANCE WILL BE ISSUED FOLLOWING COMPLETION AND ACCEPTANCE OF THE WORK OUTLINED IN THE PUNCHLIST.
- THE CONTRACTOR WILL BE HELD RESPONSIBLE FOR THE PROPER FUNCTIONING OF THE LINES FOR UP TO TWO (2) YEARS FROM THE DATE OF PROBATIONARY ACCEPTANCE OF THE LINES BY THE DISTRICT. ANY MALFUNCTION DURING THIS PERIOD OF GUARANTEE SHALL BE REMEDIED BY THE CONTRACTOR TO THE SATISFACTION OF THE DISTRICT ENGINEER AT NO EXPENSE TO THE DISTRICT.
- THE DATE OF FINAL ACCEPTANCE WILL BE INDICATED IN THE CONDITION OF THE RESPONSIBLE FOR CONTACTING THE DISTRICT FOR FINAL INSPECTION AND FINAL ACCEPTANCE.

**MATERIAL LIST**

| DESCRIPTION                 | QTY. | UNIT |
|-----------------------------|------|------|
| 1.5" TYPE K CU              | 145  | LF   |
| 6" PVC                      | 421  | LF   |
| 1.5" DOMESTIC WATER METER   | 1    | EA   |
| 3/4" IRRIGATION WATER METER | 1    | EA   |
| 6" 45° BEND                 | 4    | EA   |
| 6" 11.25° BEND              | 1    | EA   |
| 3/4" CURB STOP              | 1    | EA   |
| 1.5" CURB STOP              | 1    | EA   |
| 8" GATE VALVE               | 2    | EA   |
| TEE                         | 2    | EA   |
| HYDRANT                     | 1    | EA   |
| 4" PVC                      | 34   | LF   |
| CLEANOUT                    | 3    | EA   |
| GREASE INTERCEPTOR          | 1    | EA   |
| SAMPLING MANHOLE            | 1    | EA   |

**FIRE CODE REVIEW BLOCK:**

ALL FIRE HYDRANTS SHALL BE INSTALLED ACCORDING TO WATER UTILITY STANDARDS. THE NUMBER AND LOCATIONS OF THE FIRE HYDRANTS AS SHOWN ON THE OVERALL UTILITY PLAN ARE CORRECT AS SPECIFIED BY THE TOWN OF PARKER, COMMUNITY DEVELOPMENT DEPARTMENT.

*Drayton Sanderson* 06/22/2022  
FIRE CODE OFFICIAL OR DESIGNATED REPRESENTATIVE DATE

(NOTE - UNDERGROUND FIRE LINE (UFL) SUBMITTAL DOCUMENTS MUST MEET THE REQUIREMENT OF NFPA 24 WHEN SUBMITTING FOR REVIEW.)

THE DISTRICT INSPECTOR MUST BE NOTIFIED AT LEAST 48 HOURS PRIOR TO START OF CONSTRUCTION. CALL PARKER WATER AND SANITATION DISTRICT AT 303-841-4627. THE DISTRICT WILL PROVIDE PERIODIC INSPECTIONS OF THE WORK. 24 HOUR NOTICE TO THE INSPECTOR IS REQUIRED FOR SCHEDULING INSPECTIONS. ANY WORK ACCOMPLISHED WITHOUT THE APPROVAL OF THE INSPECTOR WILL BE SUBJECT TO REJECTION.

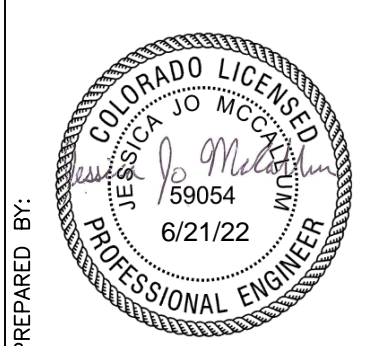
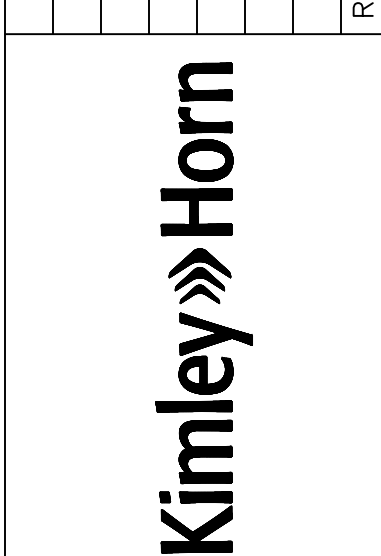
REVIEWED FOR CONFORMANCE TO PARKER WATER AND SANITATION DISTRICT STANDARDS:

BY: *Drayton Sanderson* (DISTRICT REPRESENTATIVE)  
DATE: Jun 23 2022

APPROVED FOR CONSTRUCTION:  
PARKER WATER AND SANITATION DISTRICT

BY: *Rebecca Pedigo* (DISTRICT ENGINEER)  
DATE: Jun 23 2022

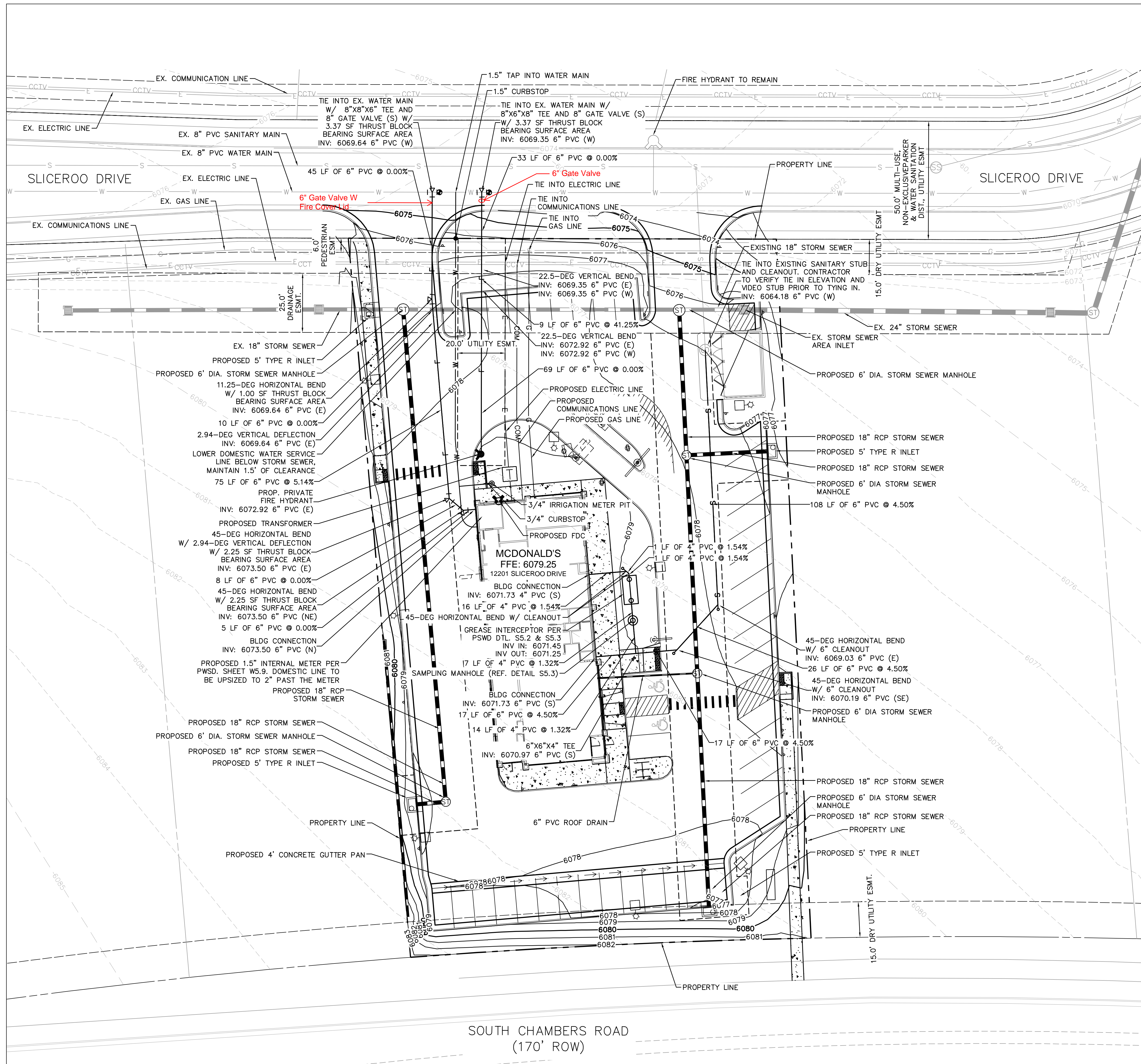
|               |             |                                 |      |
|---------------|-------------|---------------------------------|------|
| JUN           | REVISION #4 | 4/8/22                          | DATE |
|               | REVISION #3 | 3/9/22                          |      |
|               | REVISION #2 | 11/22/21                        |      |
|               | REVISION #1 | 9/21/21                         |      |
| DESCRIPTION   |             | REV                             | BY   |
| UTILITY PLANS |             |                                 |      |
| COVER SHEET   |             |                                 |      |
| SITE ADDRESS  |             | LOT 3, DOUGLAS 234 FILING NO. 6 |      |
| TITLE         |             | C2.0                            |      |



**McDonald's USA, LLC**  
These drawings and specifications are the confidential and proprietary property of McDonald's USA, LLC and shall not be copied or reproduced without written authorization. The contract documents were prepared not suitable for use on a different site or at a later time. Use of these drawings for reference or example on another project requires the approval of the engineer of record. The contract documents for reuse on another project is not authorized.







**LEGEND:**

|     |                     |
|-----|---------------------|
| --- | PROPERTY LINE       |
| --- | EASEMENT            |
| --- | SCREEN WALL         |
| --- | EX. WATER LINE      |
| --- | EX. SANITARY LINE   |
| --- | EX. STORM SEWER     |
| --- | EX. PHONE LINE      |
| --- | EX. ELECTRIC LINE   |
| --- | EX. GAS LINE        |
| --- | PROP. WATER LINE    |
| --- | PROP. SANITARY LINE |
| --- | PROP. STORM SEWER   |
| --- | PROP. PHONE LINE    |
| --- | PROP. ELECTRIC LINE |
| --- | PROP. GAS LINE      |

- GENERAL NOTES:**
1. ALL EXISTING UTILITIES ARE TO REMAIN UNLESS OTHERWISE NOTED.
  2. LIGHT POLES SHALL BE SETBACK AT LEAST 18" FROM TOP BACK OF CURB ADJACENT TO HEAD IN PARKING STALLS.
  3. CONTRACTOR VIDEO EXISTING SANITARY SEWER FROM END OF EXISTING STUB TO EXISTING MAIN TO VERIFY CONDITION PRIOR TO CONNECTION.

- CAUTION NOTES:**
1. CONTRACTOR TO VERIFY TIE IN LOCATIONS TO EXISTING UTILITIES.
  2. CONTRACTOR TO MAINTAIN AT LEAST 18" OF VERTICAL SEPARATION BETWEEN UTILITIES.

**APPROVED**  
 Jun 23 2022  
**PARKER WATER AND SANITATION DISTRICT**

ALL FIRE HYDRANTS SHALL BE INSTALLED ACCORDING TO WATER UTILITY STANDARDS. THE NUMBER AND LOCATIONS OF THE FIRE HYDRANTS AS SHOWN ON THE OVERALL UTILITY PLAN ARE CORRECT AS SPECIFIED BY THE TOWN OF PARKER, COMMUNITY DEVELOPMENT DEPARTMENT.

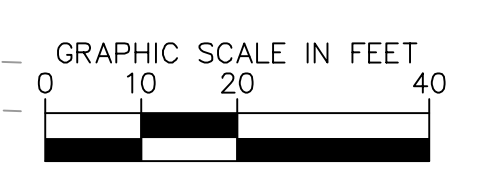
*[Signature]* 06/22/2022  
 FIRE CODE OFFICIAL OR DESIGNATED REPRESENTATIVE DATE

(NOTE - UNDERGROUND FIRE LINE (UFL) SUBMITTAL DOCUMENTS MUST MEET THE REQUIREMENT OF NFPA 24 WHEN SUBMITTING FOR REVIEW.)

THE TOWN OF PARKER REVIEW CONSTITUTES GENERAL COMPLIANCE WITH THE TOWN'S STANDARDS AND APPROVED VARIANCES. SUBJECT TO THESE PLANS BEING STAMPED, SIGNED, AND DATED BY THE PROFESSIONAL ENGINEER OF RECORD, REVIEW BY THE TOWN DOES NOT CONSTITUTE APPROVAL OF THE PLAN DESIGN OR ACCURACY AND CORRECTNESS OF ENGINEERING CALCULATIONS. ERRORS IN THE DESIGN OR CALCULATIONS REMAIN THE RESPONSIBILITY OF REGISTERED PROFESSIONAL ENGINEER WHOSE STAMP AND SIGNATURE ARE AFFIXED TO THIS DOCUMENT.

THIS REVIEW DOES NOT CONSTITUTE APPROVAL OF ANY PRIVATE ON-SITE IMPROVEMENTS WHICH MAY BE SHOWN. CONSTRUCTION CANNOT COMMENCE UNTIL ALL REQUIRED DRAINAGE/TRAFFIC REPORT(S), FINAL DEVELOPMENT PLAN(S), SPECIAL REVIEW(S), GRADING PERMIT, AND/OR OTHER PERMITS ARE COMPLETE, APPROVED AND ON FILE WITH THE TOWN OF PARKER.

TOWN OF PARKER, DIRECTOR OF ENGINEERING DATE



|              |                                 |      |          |             |     |
|--------------|---------------------------------|------|----------|-------------|-----|
| TITLE        | UTILITY PLANS                   | DATE | 4/8/22   | REVISION #4 | JJM |
| DESCRIPTION  | UTILITY PLAN                    | DATE | 3/9/22   | REVISION #3 | JJM |
| SITE ID      | 0050785                         | DATE | 11/22/21 | REVISION #2 | JJM |
| SITE ADDRESS | LOT 3, DOUGLAS 234 FILING NO. 6 | DATE | 9/21/21  | REVISION #1 | JJM |
|              |                                 | REV  |          |             | BY  |

**McDonald's USA, LLC**

These drawings and specifications are the confidential and proprietary property of McDonald's USA, LLC and shall not be copied or reproduced without written authorization. The contract documents were prepared not suitable for use on a different site or at a later time. Use of these drawings for reference or example on another project requires the contract documents for reuse on another project is not authorized.

**Kimley-Horn**

PREPARED BY: JESSICA JO MCCOY, PROFESSIONAL ENGINEER, LICENSE NO. 60454, 6/21/22

**INSPECTION POLICY:**

1. ALL SERVICE INSPECTIONS MUST BE SCHEDULED AT LEAST 24 HOURS IN ADVANCE OF THE REQUESTED INSPECTION.
2. SERVICE INSPECTIONS WILL OCCUR BETWEEN 1:00 P.M. AND 3:00 P.M. SPECIFIC INSPECTION TIMES ARE NOT AVAILABLE.
3. IF THE CONTRACTOR IS NOT READY FOR INSPECTION WHEN THE INSPECTOR ARRIVES AT THE SITE OR SERVICE FAILS, A RE-INSPECTION WILL HAVE TO BE SCHEDULED IN ACCORDANCE WITH NOTES 1 AND 2 ABOVE AND A RE-INSPECTION FEE CHARGED.
4. SHOULD THE SERVICE LINES BE DAMAGED BY LATER CONSTRUCTION, AN INSPECTION OF THE REPAIR WILL BE REQUIRED IN ACCORDANCE WITH NOTES 1 AND 2 ABOVE.
5. THE CONTRACTOR SHALL LEAVE ALL PIPE AND FITTINGS EXPOSED FOR THE INSPECTOR TO OBSERVE. INSPECTORS WILL NOT ENTER ANY EXCAVATIONS TO CHECK MATERIALS. THE TOP LAYER OF BEDDING CAN BE ADDED AFTER THE INSPECTION HAS BEEN COMPLETED.
6. ALL EXCAVATIONS SHALL BE IN ACCORDANCE WITH OSHA STANDARDS.
7. LOTS WITHOUT BUILDING ADDRESSES BEFORE DISTRICT INSPECTION OR METER SET WILL FAIL AUTOMATICALLY.
8. CONTRACTOR MUST BE PRESENT AT TIME OF INSPECTION. UNLESS COORDINATED WITH DISTRICT INSPECTOR.

**INSTALLATION NOTES:**

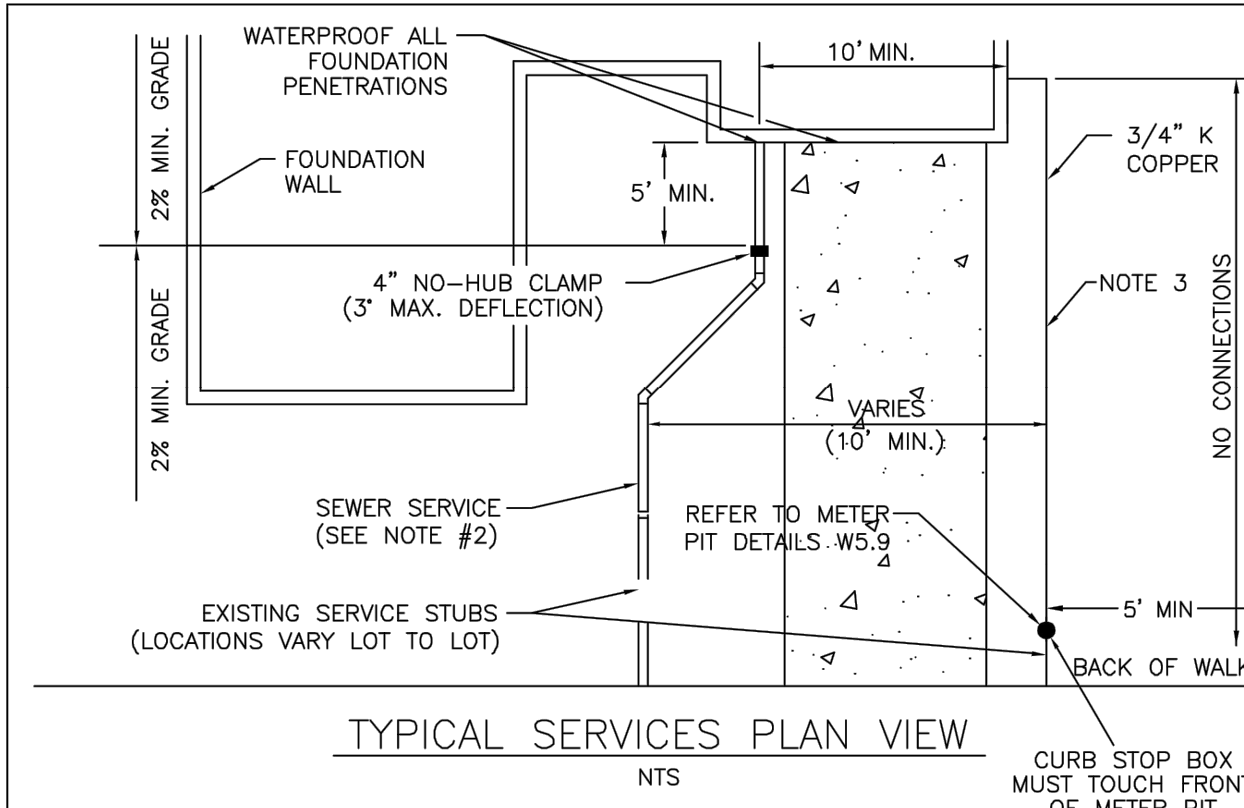
- WATER**
1. ACCEPTABLE PIPE MATERIALS SHALL BE K-COPPER TUBING. (3/4" MIN.)
  2. APPROVED BEDDING TO BE SQUEEGEE.
  3. ONLY ONE COUPLING WILL BE ALLOWED BETWEEN THE STUB-IN AND BUILDING. COMPRESSION COUPLINGS WILL NOT BE ALLOWED ON NEW CONSTRUCTION. SILVER SOLDERED JOINTS MUST BE USED ON SERVICES LARGER THAN 3/4". SILVER SOLDERED JOINTS MUST BE INSPECTED BY PWS BEFORE BURIAL. FLARED COUPLINGS WILL BE ALLOWED ON ALL SERVICES 3/4" AND SMALLER.
  4. A WATER SERVICE WHICH CROSSES A SEWER SERVICE CAN DO SO ONLY AT A 45-90° ANGLE. WATER SERVICES SHALL BE LOCATED A MINIMUM OF 18" ABOVE SEWER SERVICE.
  5. WATER SERVICE FOUNDATION PENETRATIONS SHALL BE WATERPROOFED USING MASTIC OR OTHER APPROVED METHOD. CRAWL SPACE REQUIRES CONTINUOUS COPPER WITH A 1" BURY.
  6. CURB STOP MUST BE PLUMB AND CENTERED OVER THE NUT. IT SHOULD BE STRAPPED TO THE METER PIT (RESIDENTIAL INSTALLATIONS) OR CENTERED OVER THE EASEMENT LINE (COMMERCIAL INSTALLATIONS). THE ASSEMBLY MUST BE AT OR SLIGHTLY ABOVE FINISHED GRADE.
  7. MOVED CURB BOXES MUST BE INSPECTED BY PWS BEFORE BURIAL.
  8. WATERLINE MUST BE ATTACHED TO A SUPPORT BOARD THAT IS MOUNTED TO THE WALL.
  9. NO VOIDS ALLOWED UNDER WATERLINES FROM STOP BOX TO FOUNDATION.
  10. CURBSTOP BOXES AND METER PITS CANNOT BE IN DRIVEWAYS.
  11. ONLY 3/4" (JUMPER) PIPES (RESIDENCES) ARE ALLOWED. (JUMPER) PIPES WILL BE REMOVED PRIOR TO METER SET DATE.
  12. ALL SERVICES WILL BE PERMANENTLY MARKED ON CURB FACE AS FOLLOWS:  
"X" FOR SANITARY SEWER SERVICE  
"W" FOR WATER SERVICES
  13. NO SPLICES OR FLARED COUPLINGS ALLOWED ON SERVICES LARGER THAN 3/4". SILVER SOLDERED JOINTS MUST BE USED IN MOVING STOPBOXES ON SERVICES LARGER THAN 3/4". SILVER SOLDERED JOINTS MUST BE INSPECTED BY PWS BEFORE BURIAL. FLARED COUPLINGS WILL BE ALLOWED ON ALL SERVICES 3/4" AND SMALLER.

**PARKER WATER & SANITATION DISTRICT**  
DISTRICT POLICIES & INSTALLATION NOTES FOR WATER SERVICES

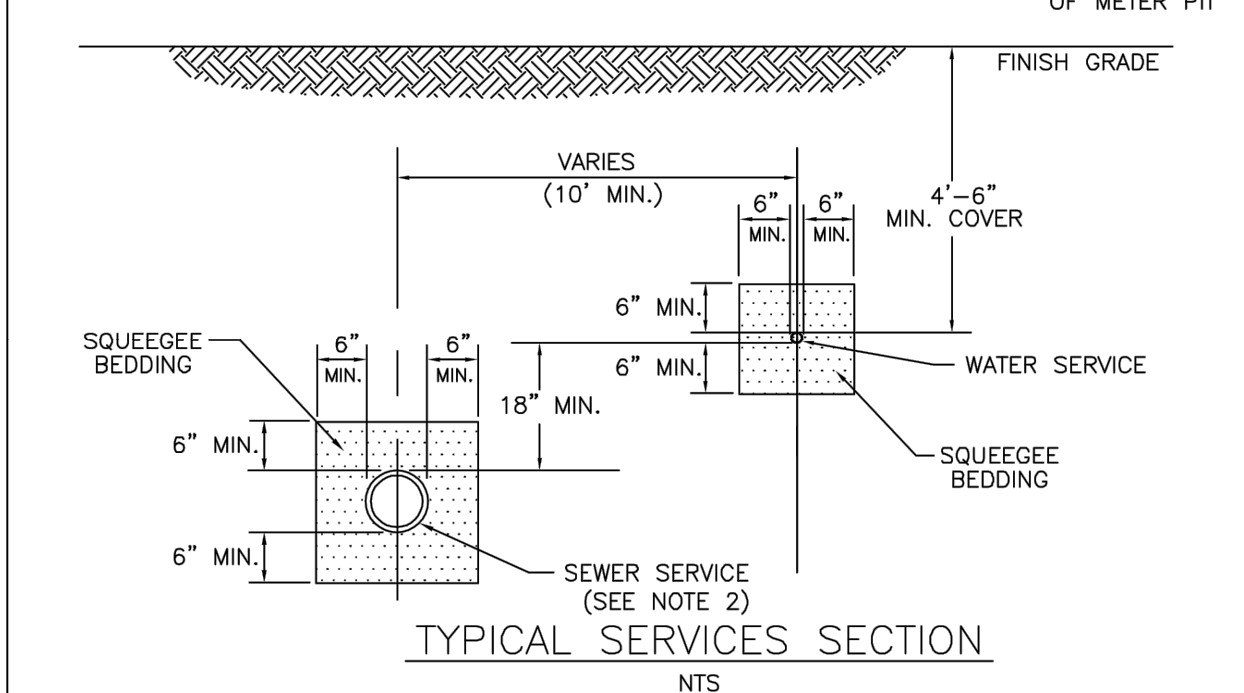
|                         |                       |
|-------------------------|-----------------------|
| SCALE: NONE             | DATE: 2/96            |
| APPROVED: PVR           | 1/04<br>1/16<br>10/16 |
| DIRECTOR OF ENGINEERING |                       |

SHEET W1.1

2016 REVISION



TYPICAL SERVICES PLAN VIEW



TYPICAL SERVICES SECTION

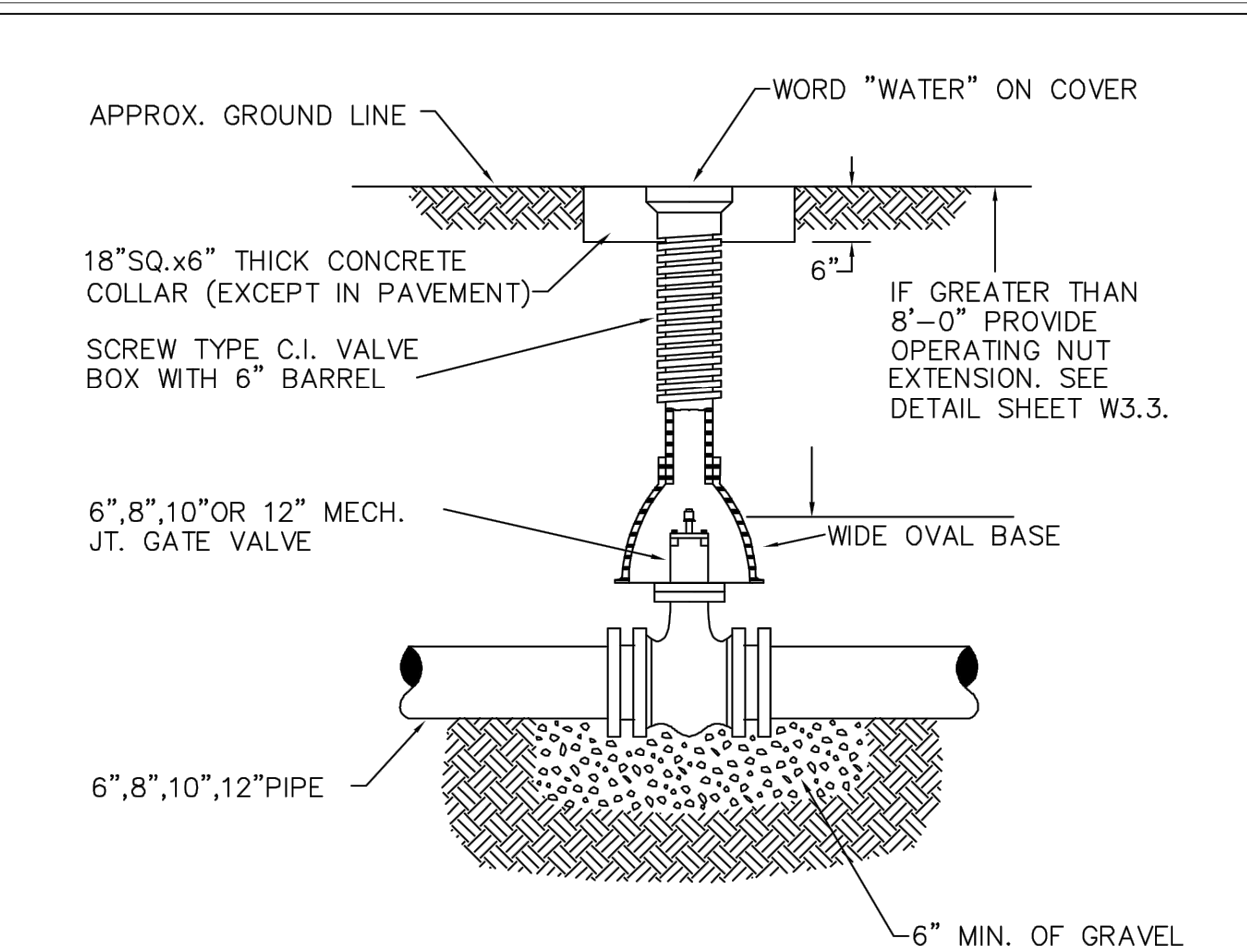
**PARKER WATER & SANITATION DISTRICT**  
TYPICAL WATER SERVICES

NOTE:  
1. SEE SHEET W1.1 FOR DISTRICT POLICIES AND INSTALLATION NOTES.  
2. REFER TO SEWER SERVICES DETAIL SHEET S1.2.  
3. 4" PVC SLEEVES REQUIRED FOR SERVICE LINES UNDER CONCRETE SURFACE.

|                         |                                      |
|-------------------------|--------------------------------------|
| SCALE: NONE             | DATE: 2/96                           |
| APPROVED: PVR           | 1/04 10/16<br>06/05<br>12/07<br>1/16 |
| DIRECTOR OF ENGINEERING |                                      |

SHEET W1.2

2016 REVISION



6-INCH VALVE BOXES  
CHECK MATERIAL SPECIFICATIONS

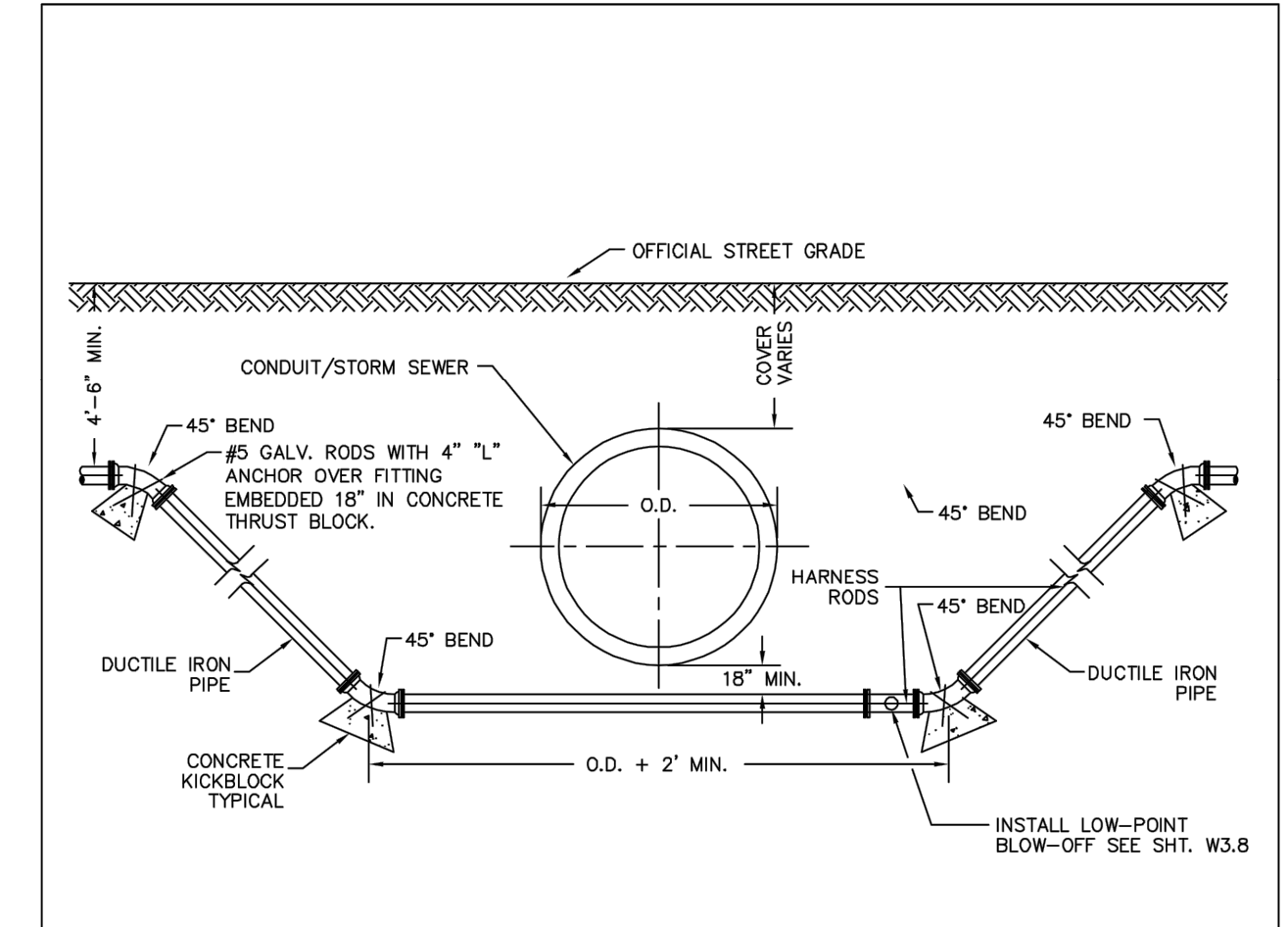
**PARKER WATER & SANITATION DISTRICT**  
VALVE BOX DETAIL

NOTE:  
1. ALL C.I. SHALL BE WRAPPED WITH 8 MIL. MIN. THICKNESS POLYETHYLENE.  
2. VALVE NUT SHALL BE CENTERED.  
3. VALVE BOX SHALL BE PLUMB.  
4. SEE MATERIAL SPECIFICATIONS FOR VALVE BOX WITH GREATER THAN BURIED DEPTH OF 4.5 FT.

|                         |                                     |
|-------------------------|-------------------------------------|
| SCALE: NONE             | DATE: 2/96                          |
| APPROVED: PVR           | 5/98 10/16<br>6/99<br>12/07<br>1/16 |
| DIRECTOR OF ENGINEERING |                                     |

SHEET W3.10

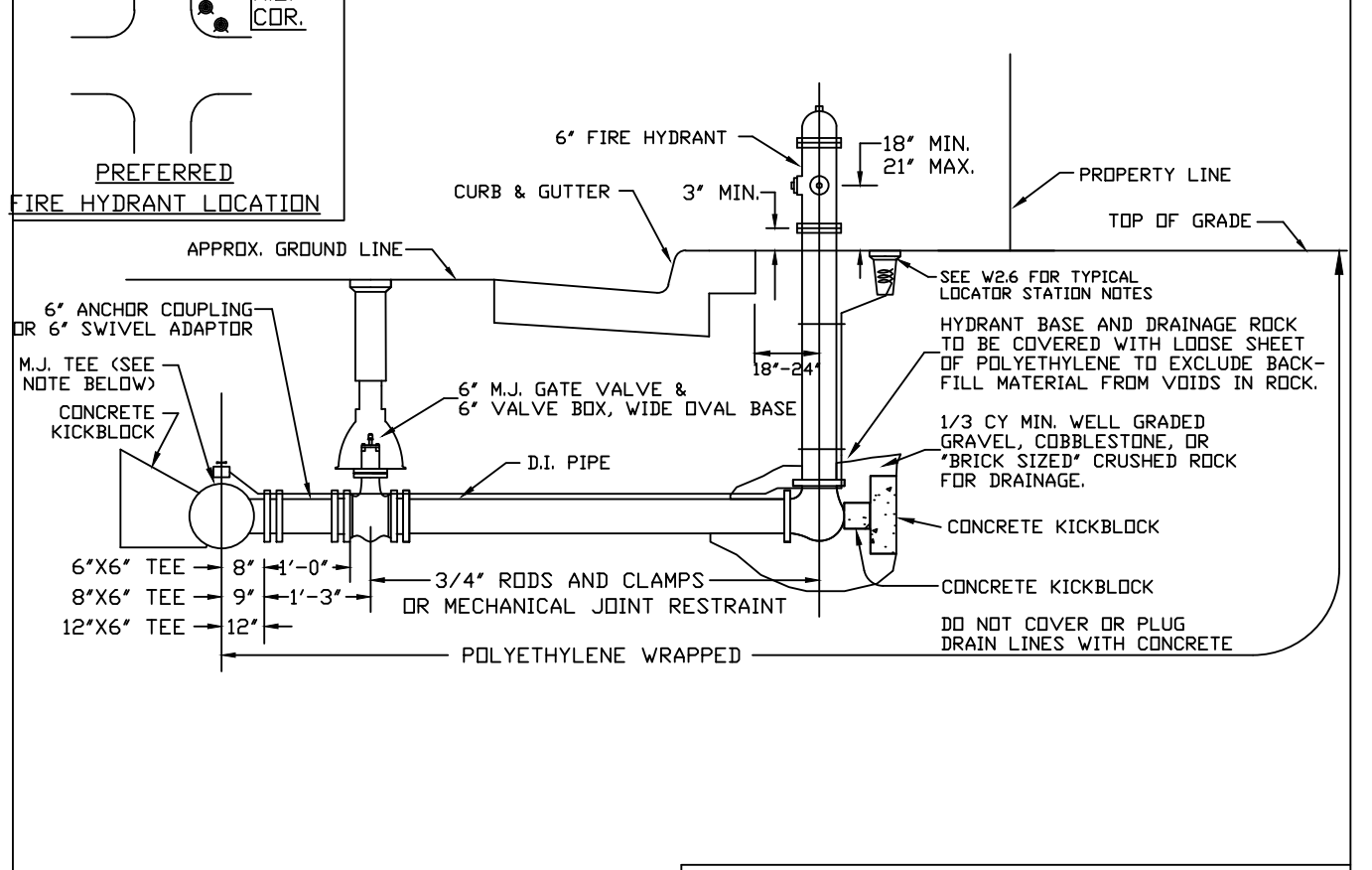
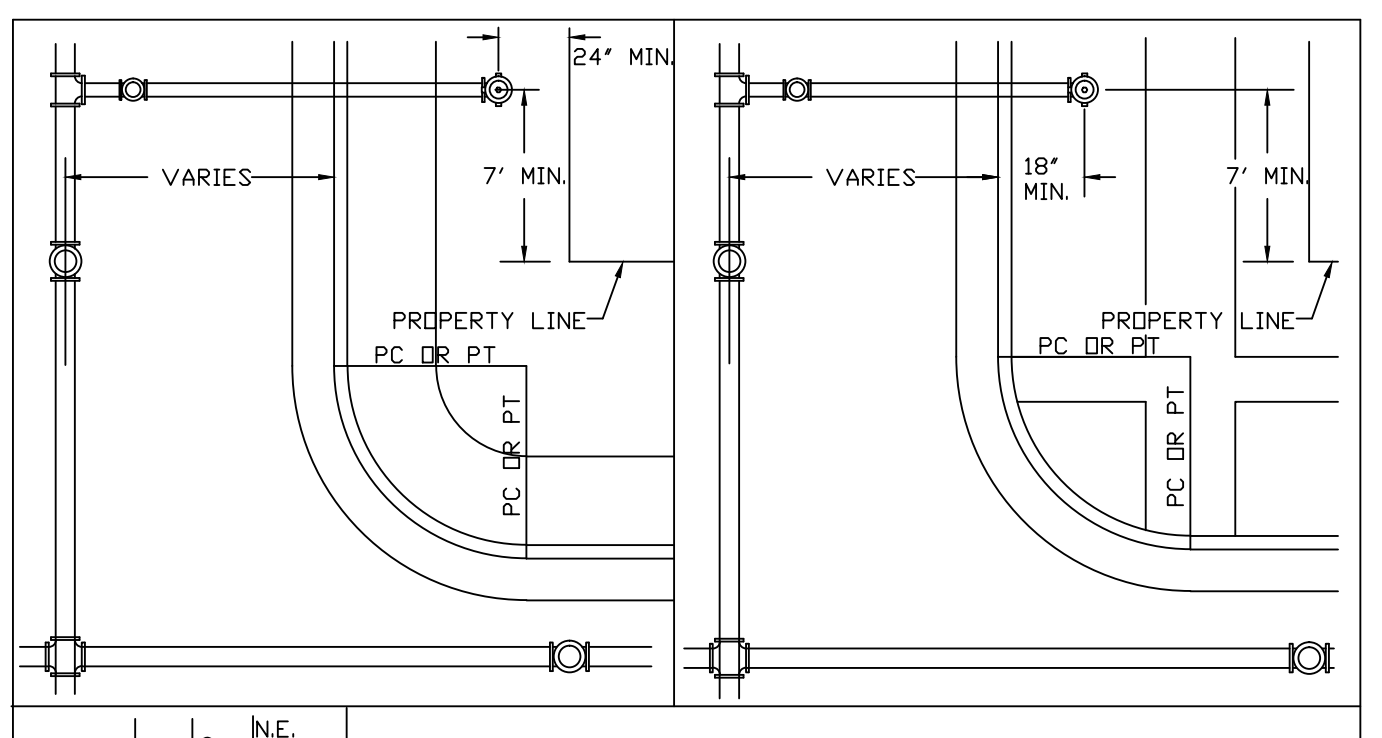
2016 REVISION



PARKER WATER & SANITATION DISTRICT  
CONDUIT OR STORM SEWER CROSSING

- NOTE:  
1. LENGTH OF EXTENSION OF PIPE AND HARNESS RODS SHALL BE IN ACCORDANCE WITH THESE ENGINEERING STANDARDS.  
2. ALL WATER MAINS TWELVE (12") INCHES OR SMALLER, WHICH CROSS UNDER CONDUITS/STORM SEWER SHALL BE DUCTILE IRON OR PVC PER SPECIFICATIONS.  
3. A BORED CROSSING MAY BE REQUIRED BY THE ENGINEER.  
4. CONCRETE KICKLOCKS PER SHEET W3.18.

2016 REVISION



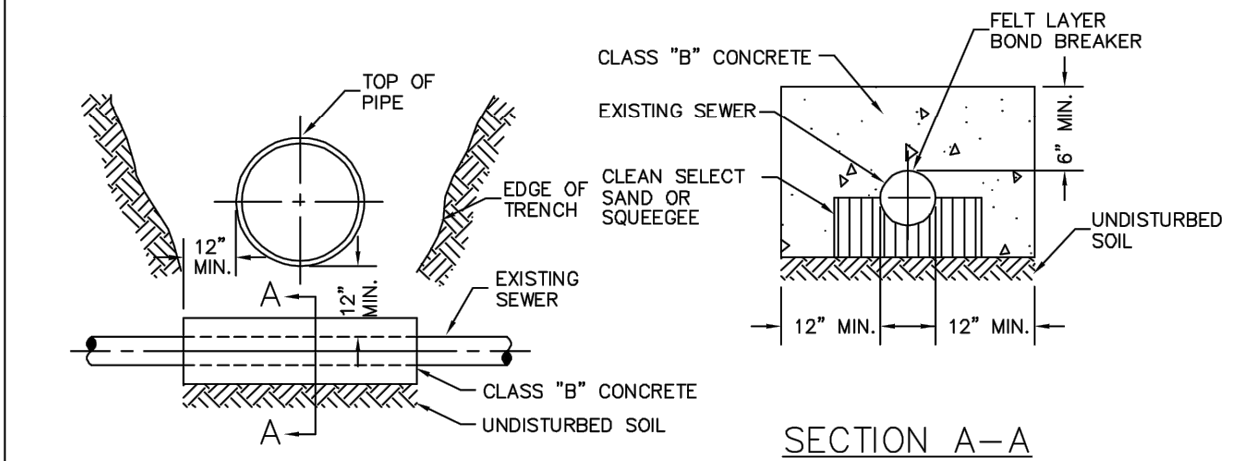
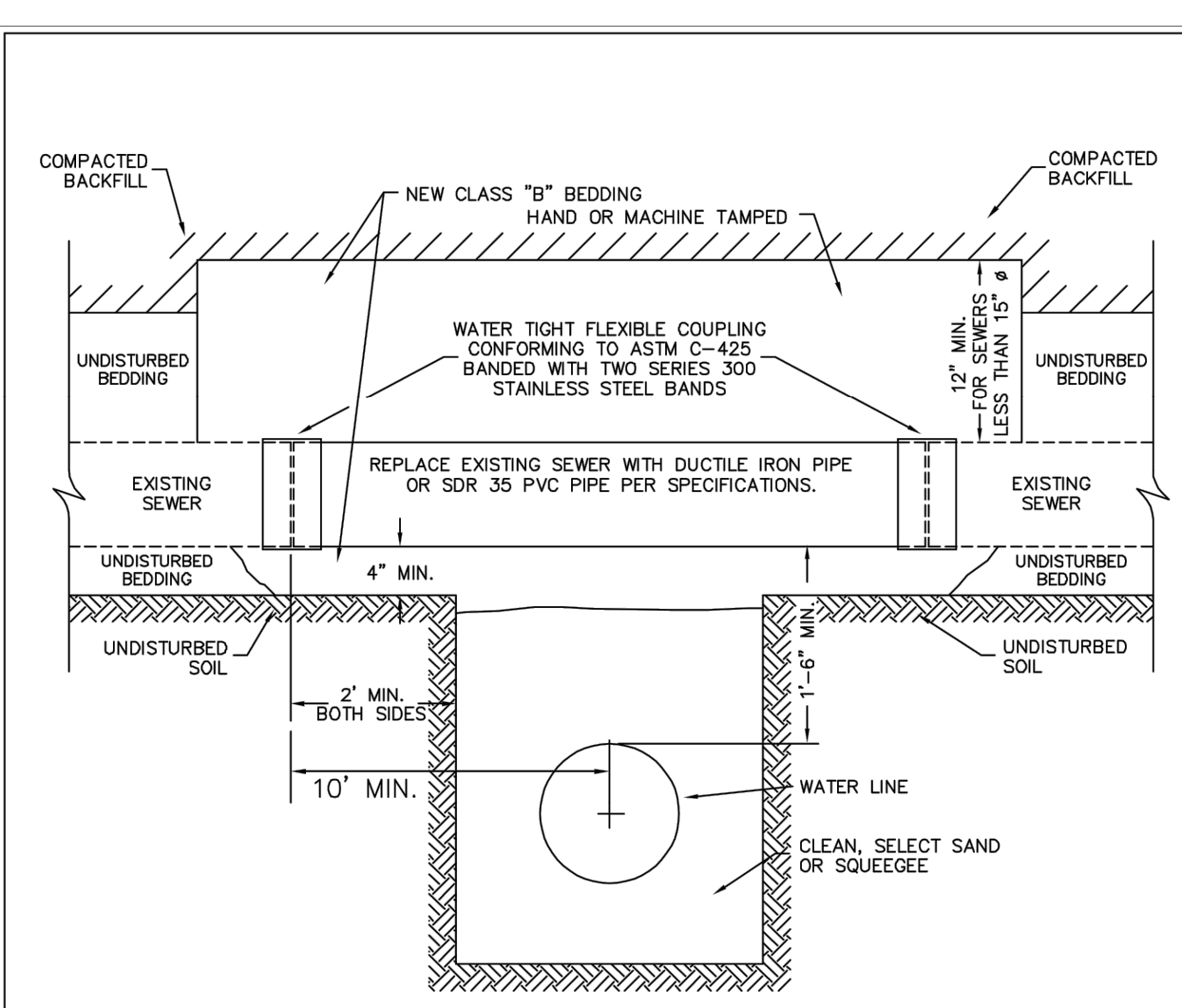
**PARKER WATER & SANITATION DISTRICT**  
FIRE HYDRANTS LOCATION & INSTALLATION

NOTE:  
1. ALTERNATE TO THE ABOVE: FASTEN M.J. VALVE DIRECTLY TO A M.J. ANCHOR TEE (CALLED SUVVEL TEE)  
2. NO HORIZONTAL OR VERTICAL BENDS ARE ALLOWED IN FIRE HYDRANT BRANCH  
4. NO PORTION OF FIRE HYDRANT MAY  
5. FIRE HYDRANT EXTENSIONS MAY NOT BE IN THE 50' SWALK AREA.

|                         |                                    |
|-------------------------|------------------------------------|
| SCALE: NONE             | DATE: 2/96                         |
| APPROVED: RWT           | 4/01 10/16<br>01/02 11/19<br>12/07 |
| DIRECTOR OF ENGINEERING |                                    |

SHEET W2.5

2020 REVISION



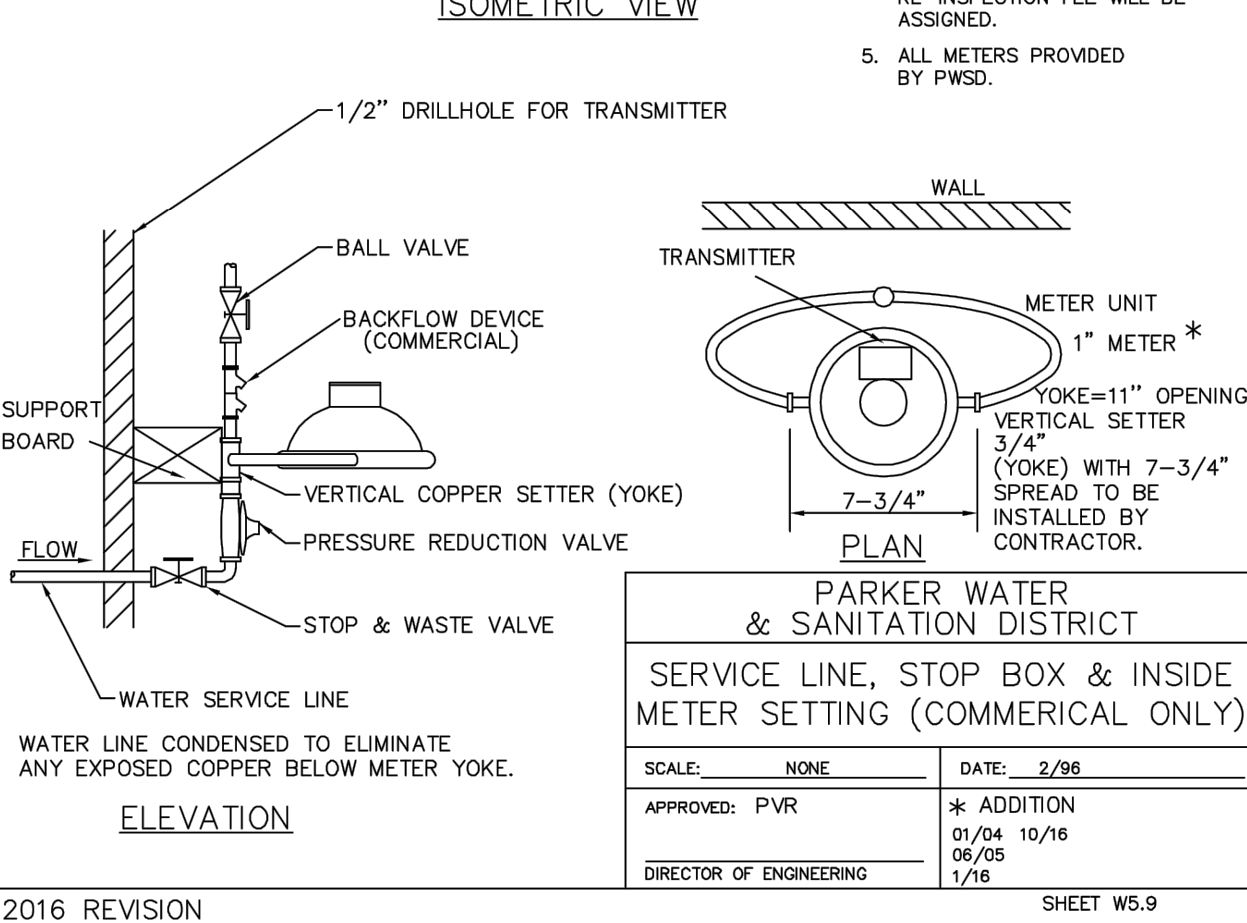
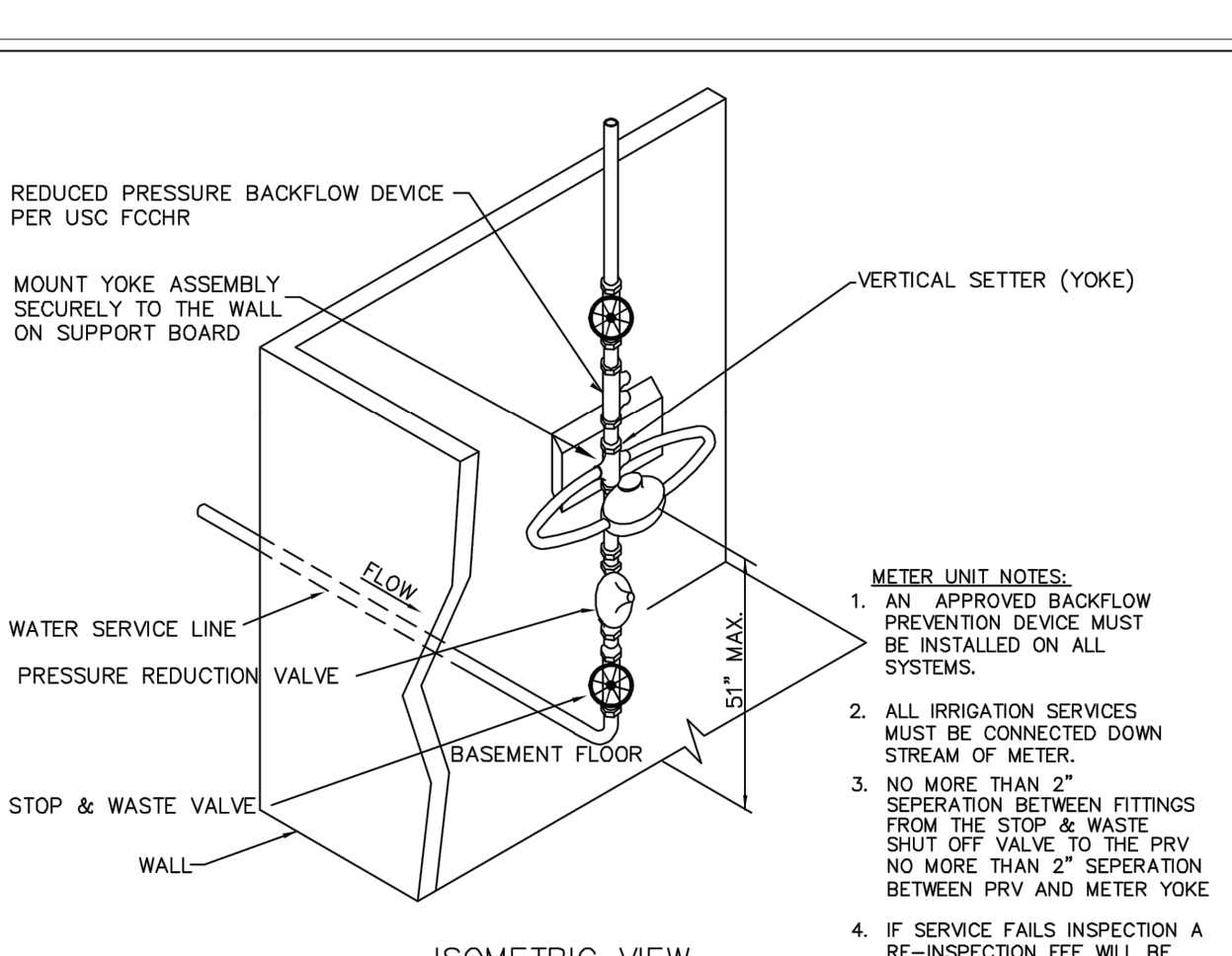
**PARKER WATER & SANITATION DISTRICT**  
CROSSING STORM & SANITARY SEWERS

NOTE:  
1. PIPE SHALL BE WRAPPED WITH FELT LAYER BEFORE ENCASING.

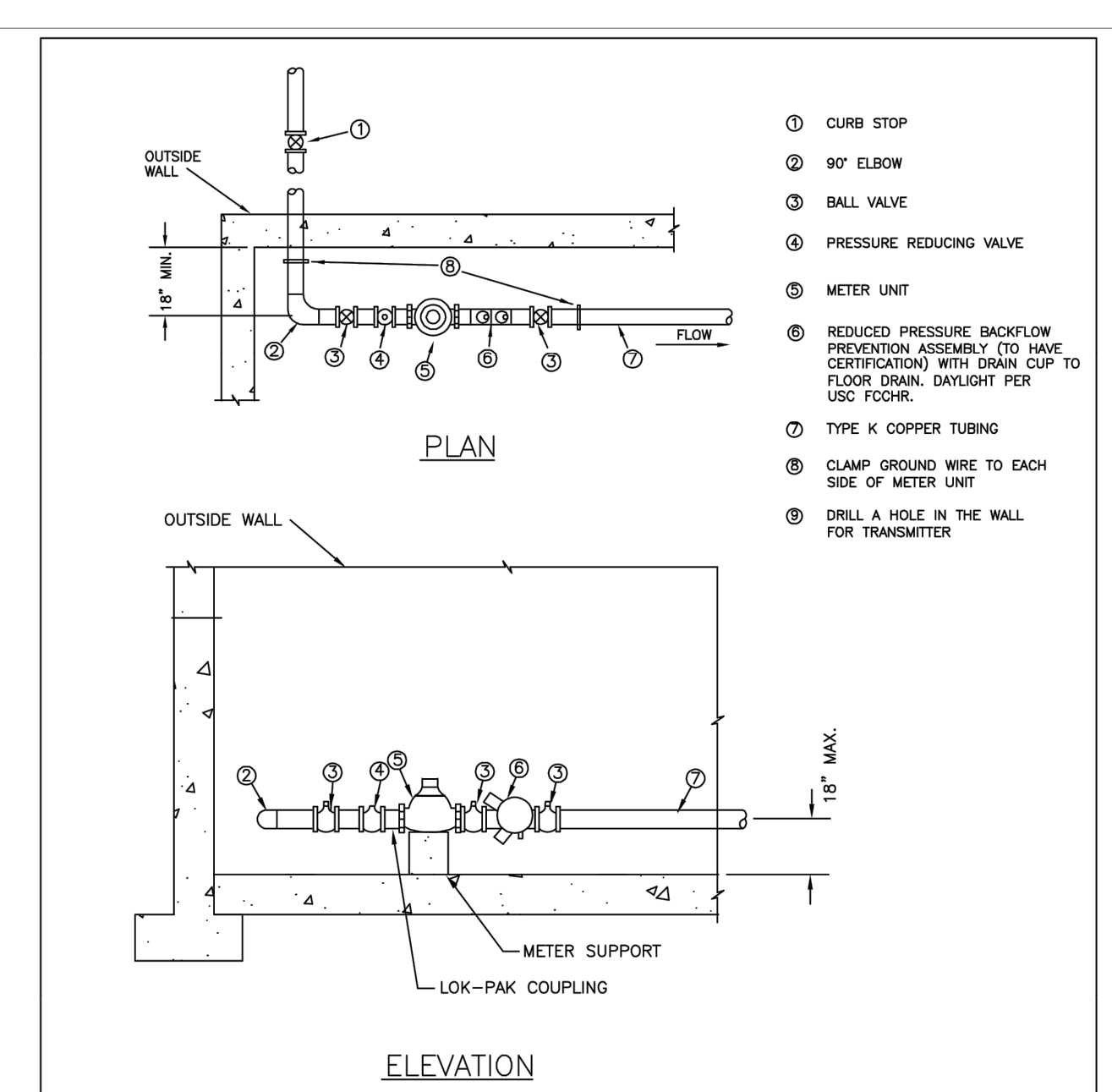
|                         |               |
|-------------------------|---------------|
| SCALE: NONE             | DATE: 2/96    |
| APPROVED: PVR           | 1/16<br>10/16 |
| DIRECTOR OF ENGINEERING |               |

SHEET W4.7

2016 REVISION



2016 REVISION



**PARKER WATER & SANITATION DISTRICT**  
INSIDE SETTING FOR 1 1/2 & 2" METER

NOTE:  
1 - PIPE JOINT SHALL BE THREADED OR SOLDERED WITH SILVER SOLDER.  
2 - INSTALLATION MUST ALLOW ACCESS FOR MAINTENANCE AND BE PROTECTED FROM FREEZING.  
3 - SEE WATER SYSTEM SPECIFICATIONS FOR GENERAL METER NOTES.  
4 - COMPANION FLANGES SHALL BE BRASS.  
5 - METER SUPPORT SHALL BE EITHER CONCRETE OR ADJ. STEEL PIPE (SEE SHEET W3.10)  
6 - 1.0" MINIMUM CLEARANCE AROUND BACKFLOW DEVICE  
7 - FLOOR DRAIN TO BE 2X PIPE SIZE  
8 - FOR IRRIGATION USES, ADD RAIN SENSOR AND SMART I.T. CONTROLLER

|                         |  |
|-------------------------|--|
| SCALE: NONE             | DATE: 2/96   |
| APPROVED: PVR           | 5/99 01/02 01/16<br>2/02 06/05 10/16<br>4/01 07/06 |
| DIRECTOR OF ENGINEERING |  |

SHEET W5.14

2016 REVISION

**APPROVED**  
Jun 23 2022  
**PARKER WATER AND SANITATION DISTRICT**

**Kimley»Horn**

**McDonald's USA, LLC**

**UTILITY PLANS**

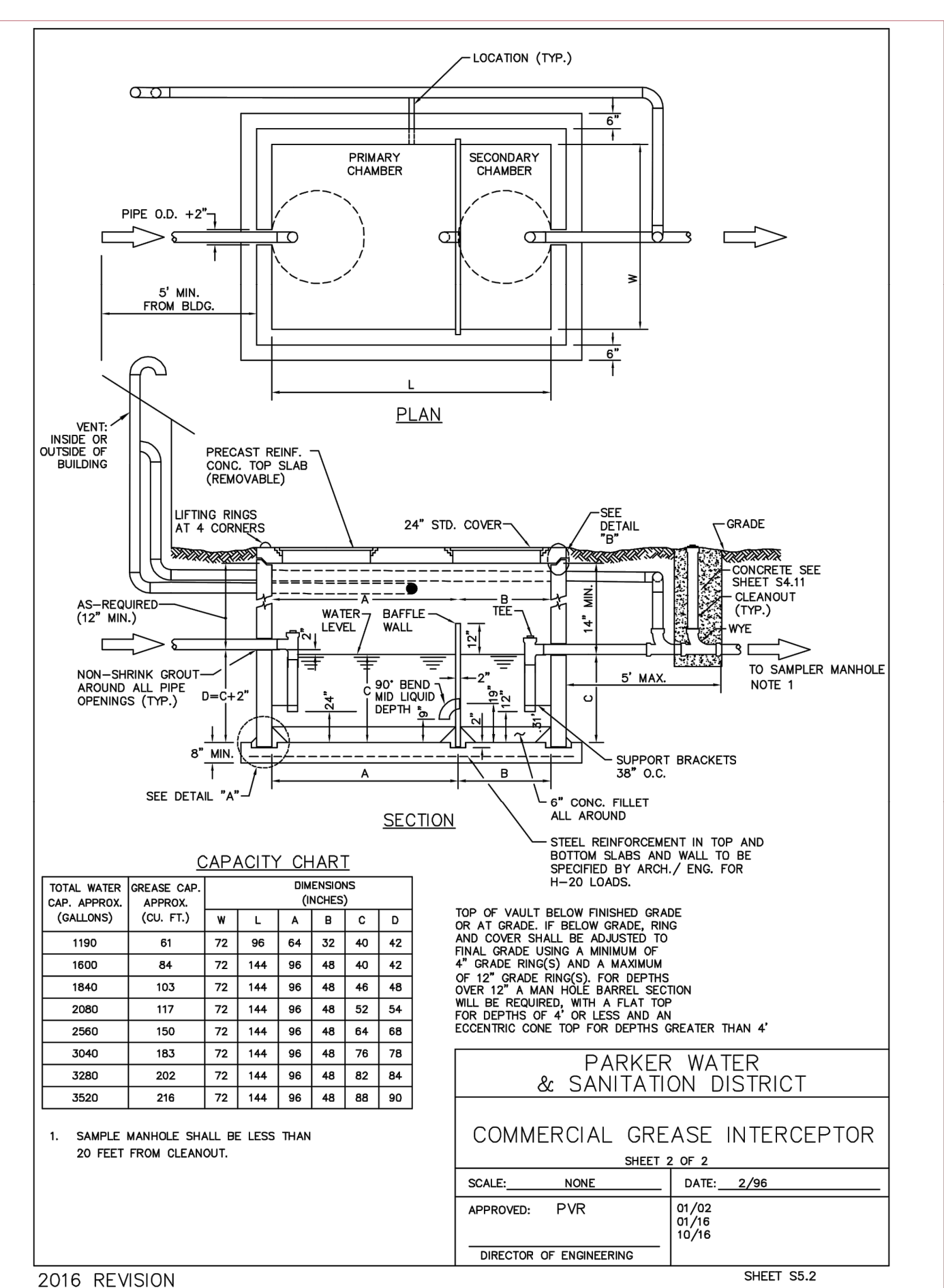
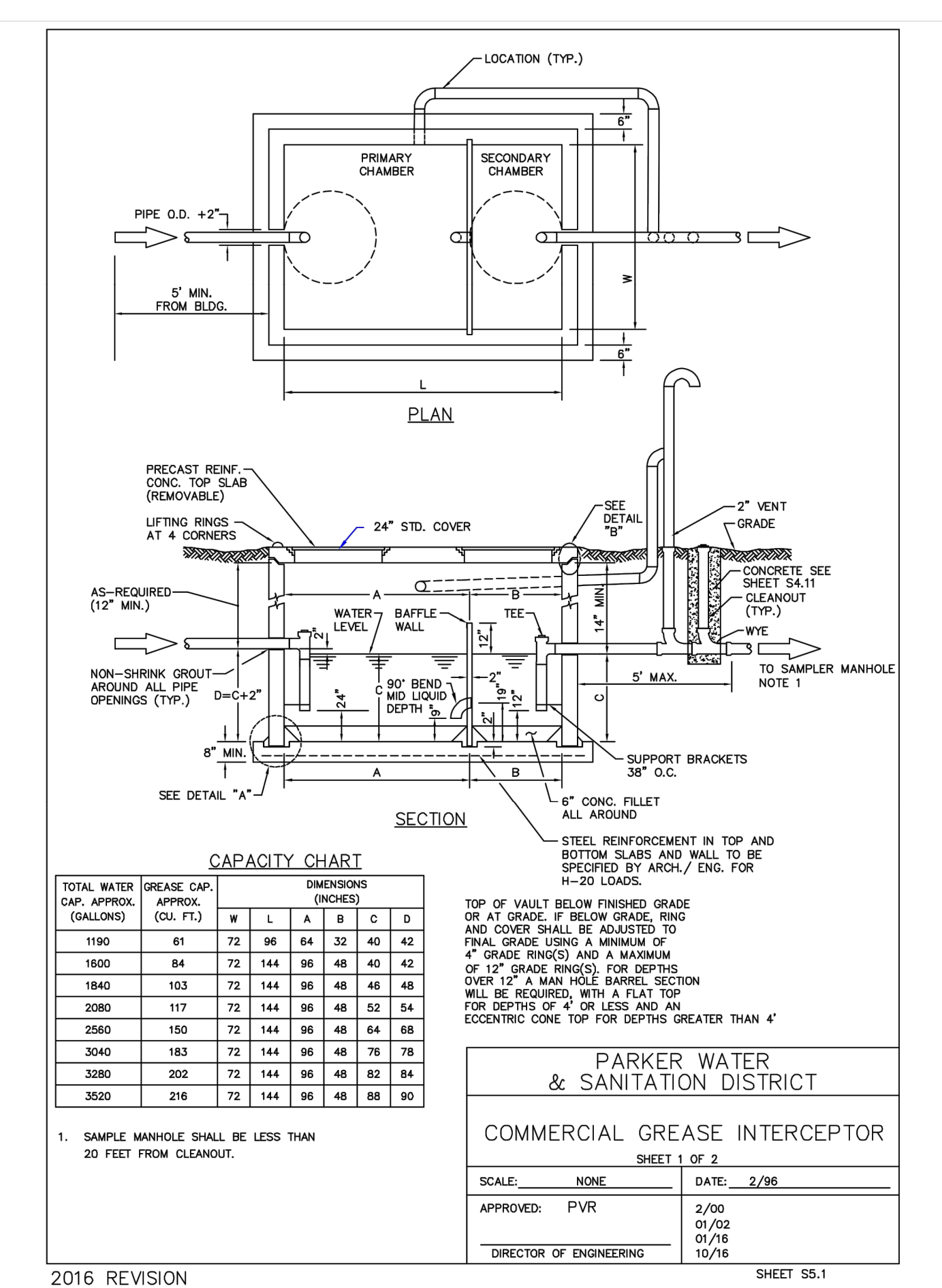
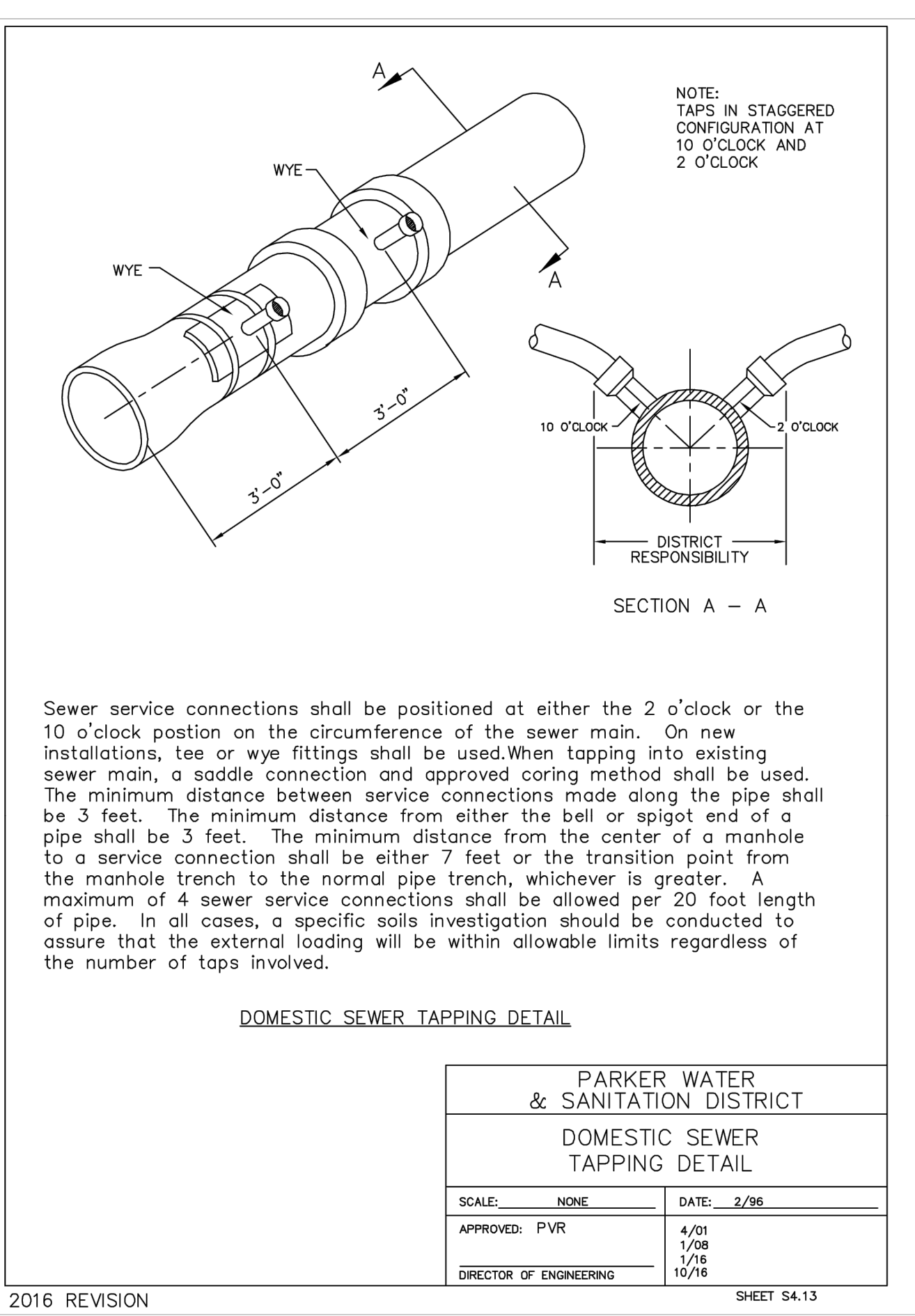
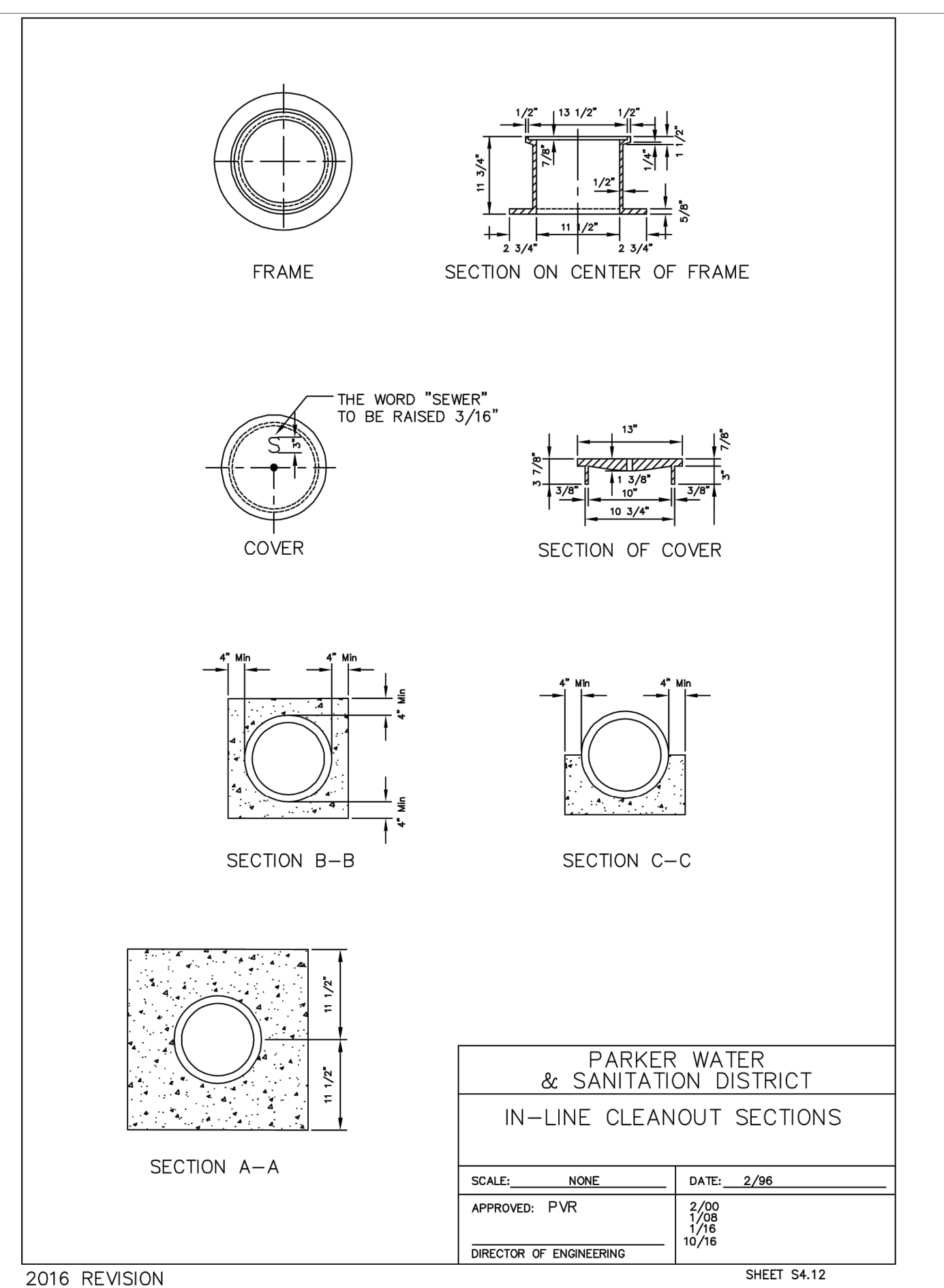
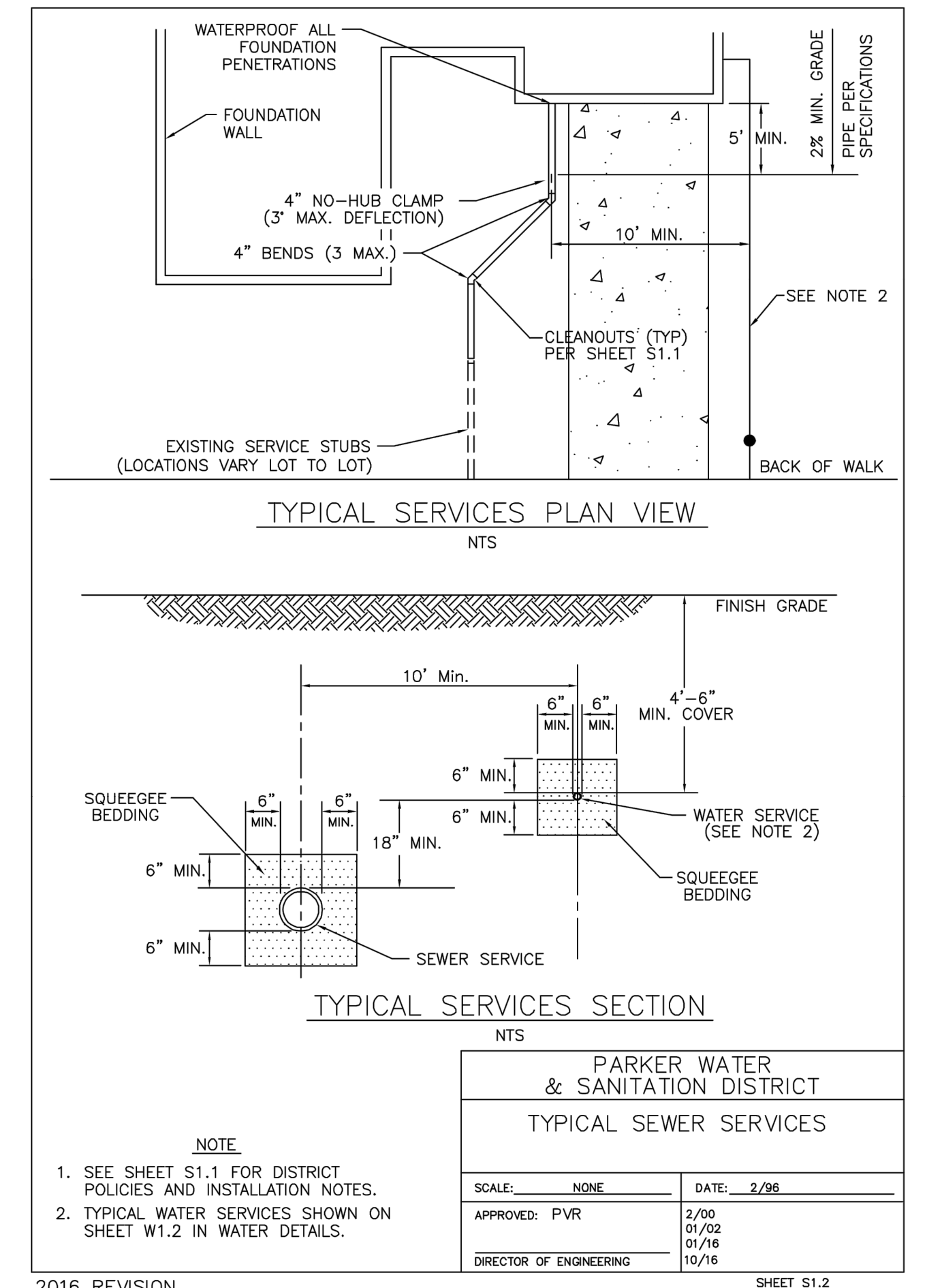
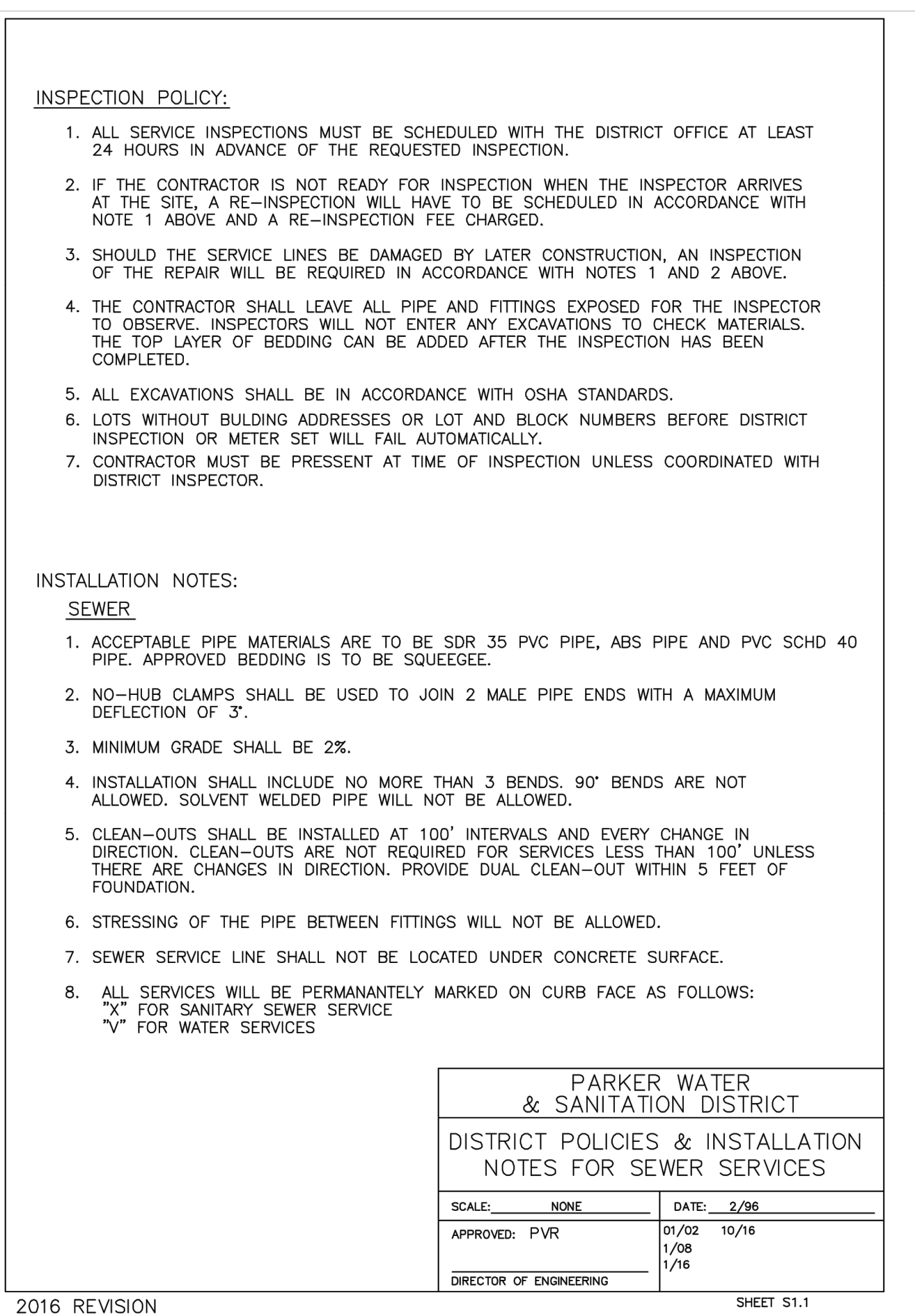
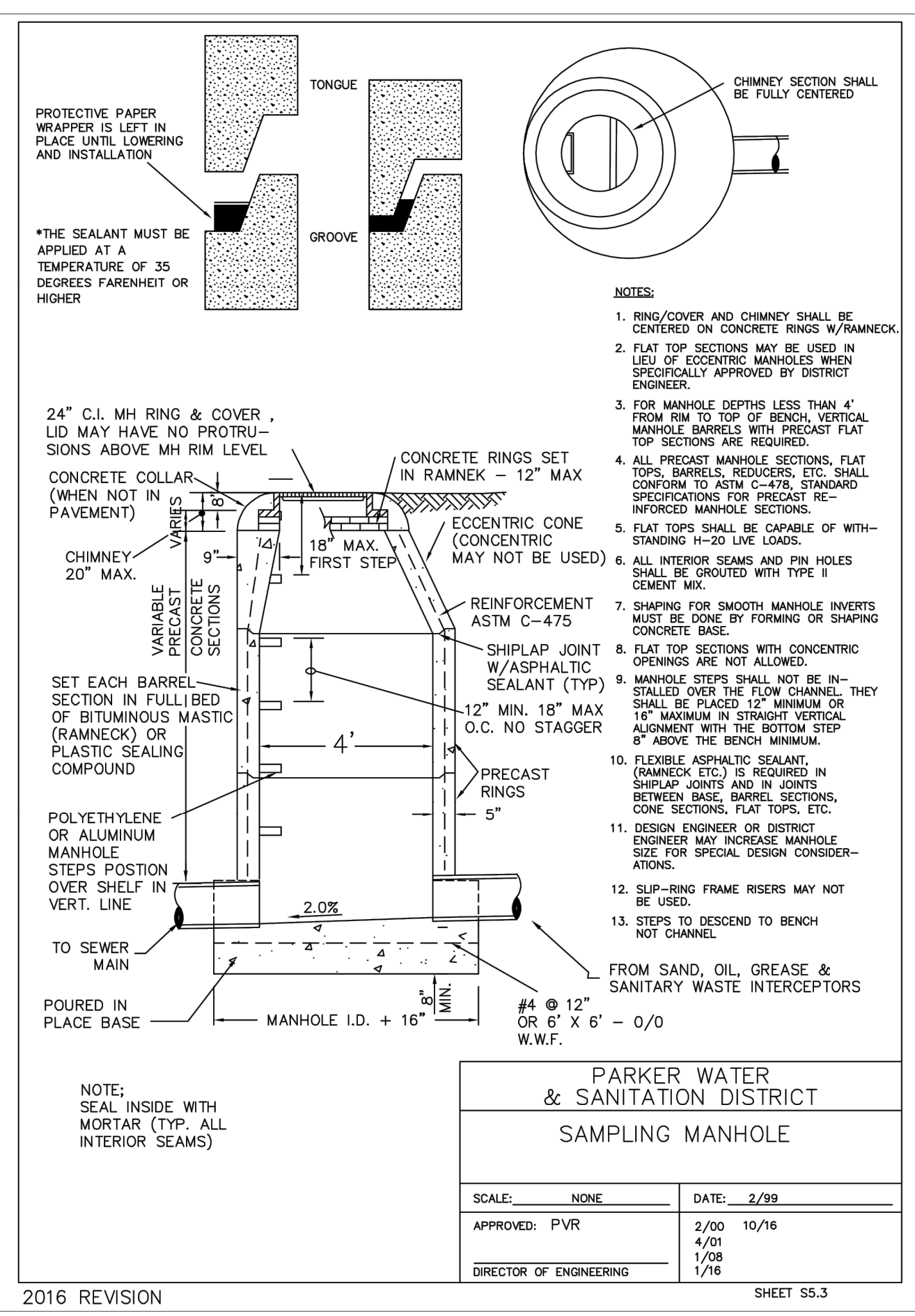
**PWSD DETAILS**

TITLE: UTILITY PLANS  
DESCRIPTION: PWSD DETAILS  
SITE ADDRESS: LOT 3, DOUGLAS 234 FLNG. NO. 6  
SITE ID: 0050785

|     |          |             |      |
|-----|----------|-------------|------|
| JJM | 4/8/22   | REVISION #4 |      |
| JJM | 3/9/22   | REVISION #3 |      |
| JJM | 11/22/21 | REVISION #2 |      |
| JJM | 9/21/21  | REVISION #1 |      |
| BY  |          | REV         | DATE |

PREPARED BY: JESSICA JO MEYER, PROFESSIONAL ENGINEER  
6/21/22

DRAWN BY: JJM  
STD ISSUE DATE: 07/1/21  
REVIEWED BY: JRM  
DATE ISSUED: 07/1/21



**APPROVED**  
Jun 23 2022  
**PARKER WATER AND  
SANITATION DISTRICT**

UTILITY PLANS  
PWSH DETAILS

REVISION #4 4/8/22  
REVISION #3 3/9/22  
REVISION #2 1/22/21  
REVISION #1 9/21/21

DATE REV DESCRIPTION

PREPARED BY: **Kimley»Horn**

PROFESSIONAL ENGINEER

McDonald's USA, LLC

These drawings and specifications are the confidential and proprietary property of McDonald's USA, LLC and shall not be copied or reproduced without written authorization. The contract documents were prepared in accordance with the contract documents for the project. Use of these drawings for reference or example on another project requires the written approval of McDonald's USA, LLC. The contract documents for the project are available for review at the project site. Use of these drawings for any other purpose is not authorized.

DRAWN BY: JMM  
DATE: 07/1/21  
REVIEWED BY: JRH  
DATE ISSUED: 07/1/21

TITLE: UTILITY PLANS  
DESCRIPTION: PWSH DETAILS  
SITE ADDRESS: LOT 3, DOUGLAS 234 FLING NO. 6  
05050785

C2.4