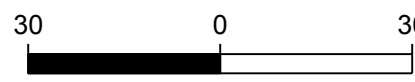
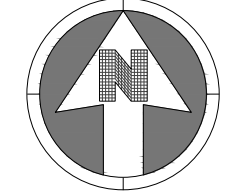


**KEY MAP**

NOT TO SCALE

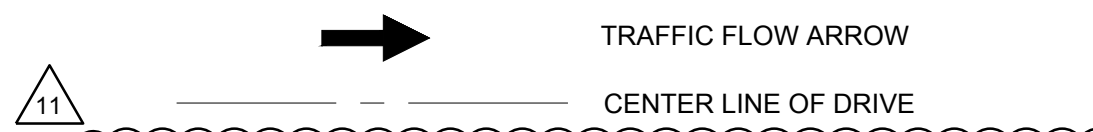


SCALE: 1" = 30'

**NOTES:**

- 1. SEE LANDSCAPE PLAN SHEET FOR DETAILED LANDSCAPING INFORMATION.

**LEGEND:**



LANDSCAPE PROPERTIES	AREA (SF)	PERCENT LANDSCAPED
TOTAL SITE DISTURBANCE	280,221	
TOTAL LANDSCAPE AREA	56,304	20.1%
TOTAL HARDSCAPED AREA	165,843	
BUILDING AREA	23,288	

**PARKING COUNT AND REQUIREMENTS**

STANDARD	PROPOSED	REQUIRED	CALCULATION
STANDARD	423	295	88,291 / 300 = 294.3
HANDICAP	9	9	
BIKE	22	10	(88,291 / 10,000) * 2 = 18
TOTAL	454	387	(NOT TO EXCEED 10)

PARKER PROJECT NUMBER

**SP18-081**

DATE

**08/23/2021**

REVISION DESCRIPTION DATE

- 0 INITIAL SUBMITTAL TO TOWN 8/8/18
- 1 REVISED SUBMITTAL TO TOWN 11/26/18
- 2 THIRD SUBMITTAL TO TOWN 7/31/19
- 3 FOURTH SUBMITTAL TO TOWN 9/13/19
- 4 FIFTH SUBMITTAL TO TOWN 10/30/19
- 5 SIXTH SUBMITTAL TO TOWN 6/15/20
- 6 SEVENTH SUBMITTAL TO TOWN 9/9/20
- 7 EIGHTH SUBMITTAL TO TOWN 10/7/20
- 8 NINTH SUBMITTAL TO TOWN 12/11/20
- 9 TENTH SUBMITTAL TO TOWN 1/8/21
- 10 ELEVENTH SUBMITTAL TO TOWN 4/12/21
- 11 TWELFTH SUBMITTAL TO TOWN 8/23/21



**S.A. MIRO, INC.**  
 CONSULTING ENGINEERS  
 4582 South Ulster Street Pkwy.  
 Suite 750 Denver, CO 80237  
 ph. 303 741 3737  
 fax 303 694 3134

PROJECT

**Parker Adventist Hospital MOB III**

9403 CROWN CREST BLVD.  
 PARKER, COLORADO  
 80138

**SITE PLAN AMENDMENT**

SHEET TITLE

**SITE PLAN**

SHEET NUMBER

**2 OF 12**