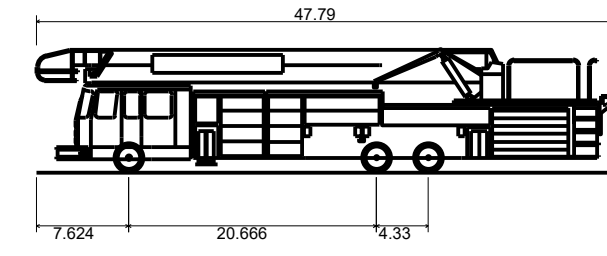
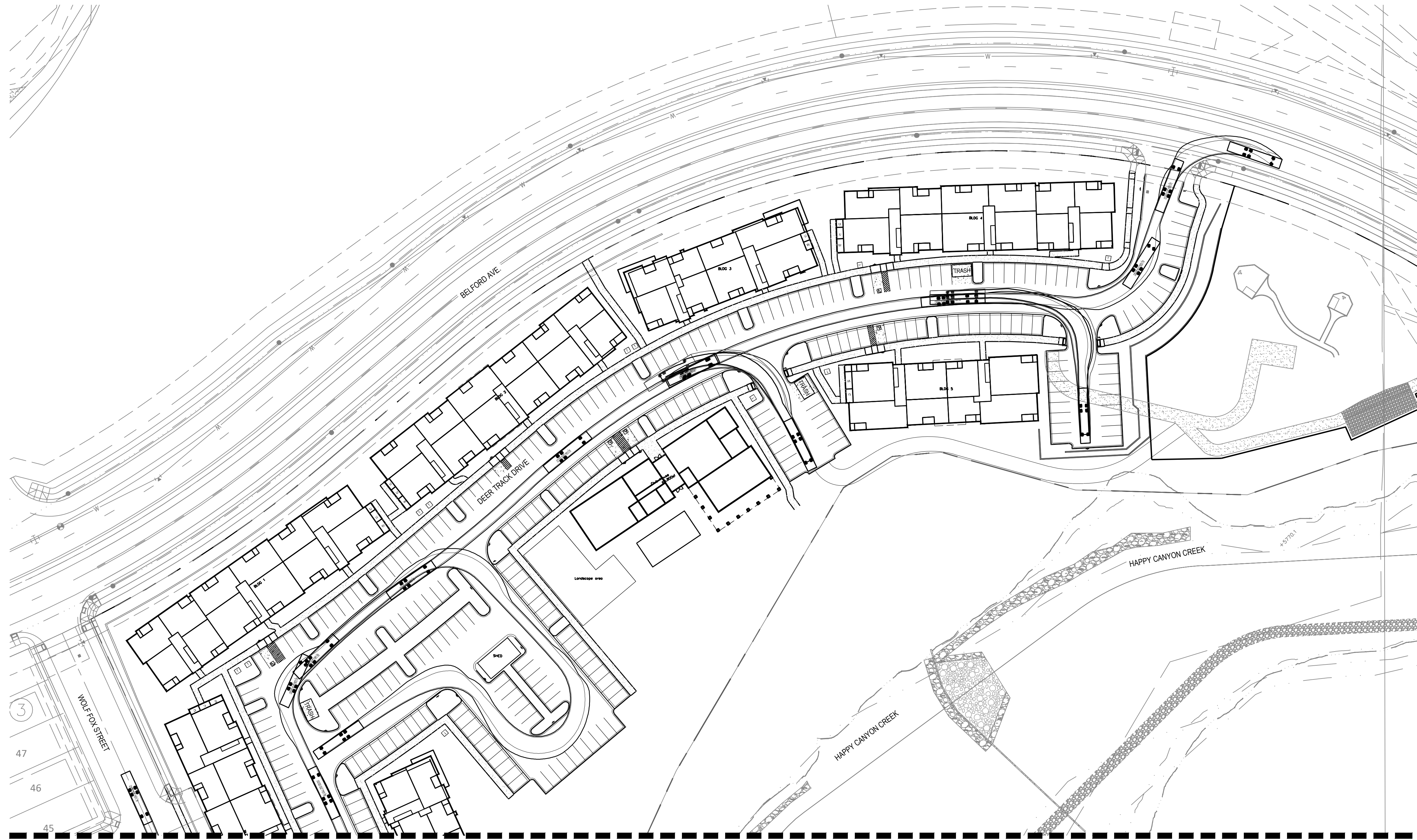
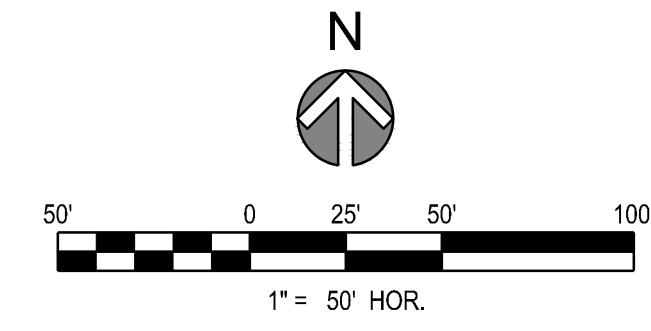


COMPARK VILLAGE SOUTH  
F1 AMD 2 - MULTIFAMILY  
SITE PLAN

LOT 2, COMPARK VILLAGE FILING NO. 1, AMEND NO. 2  
SOUTH HALF SECTION 6, TOWNSHIP 6 SOUTH, RANGE 66 WEST OF THE 6TH PRINCIPAL MERIDIAN  
TOWN OF PARKER, COUNTY OF DOUGLAS, STATE OF COLORADO



colorado south metro fire	47.790ft
Overall Length	8.410ft
Overall Width	10.243ft
Overall Body Height	0.673ft
Min Body Ground Clearance	6.920ft
Track Width	4.00s
Lock-to-lock time	46.666ft
Wall to Wall Turning Radius	

MATCH LINE SEE SHEET FA2

PROJECT NUMBER  
65120950

DRAWN BY  
TV

DATE  
01/12/2022

Engineering / Architecture / Design-Build / Surveying /  
Planning / Geospatial Solutions

5970 GREENWOOD PLAZA BLVD.  
GREENWOOD VILLAGE, CO. 80111  
303-751-0741  
www.merrick.com

PREPARED FOR CENTURY  
COMMUNITIES



PROJECT  
**COMPARK  
VILLAGE  
SOUTH**

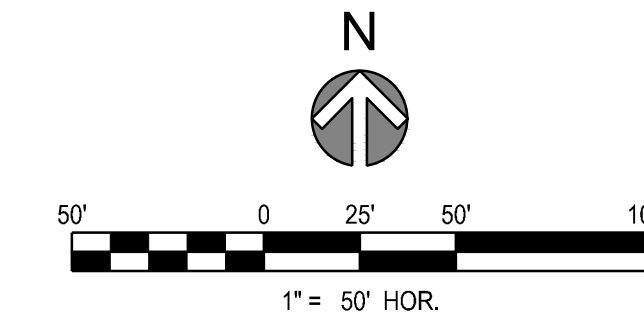
TOWN OF PARKER, COUNTY  
OF DOUGLAS, COLORADO  
80134

SHEET TITLE  
**FIRE TRUCK TURN  
ANALYSIS**

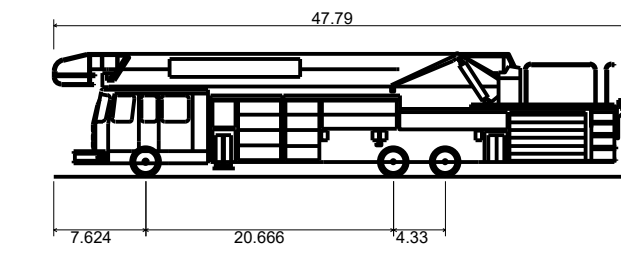
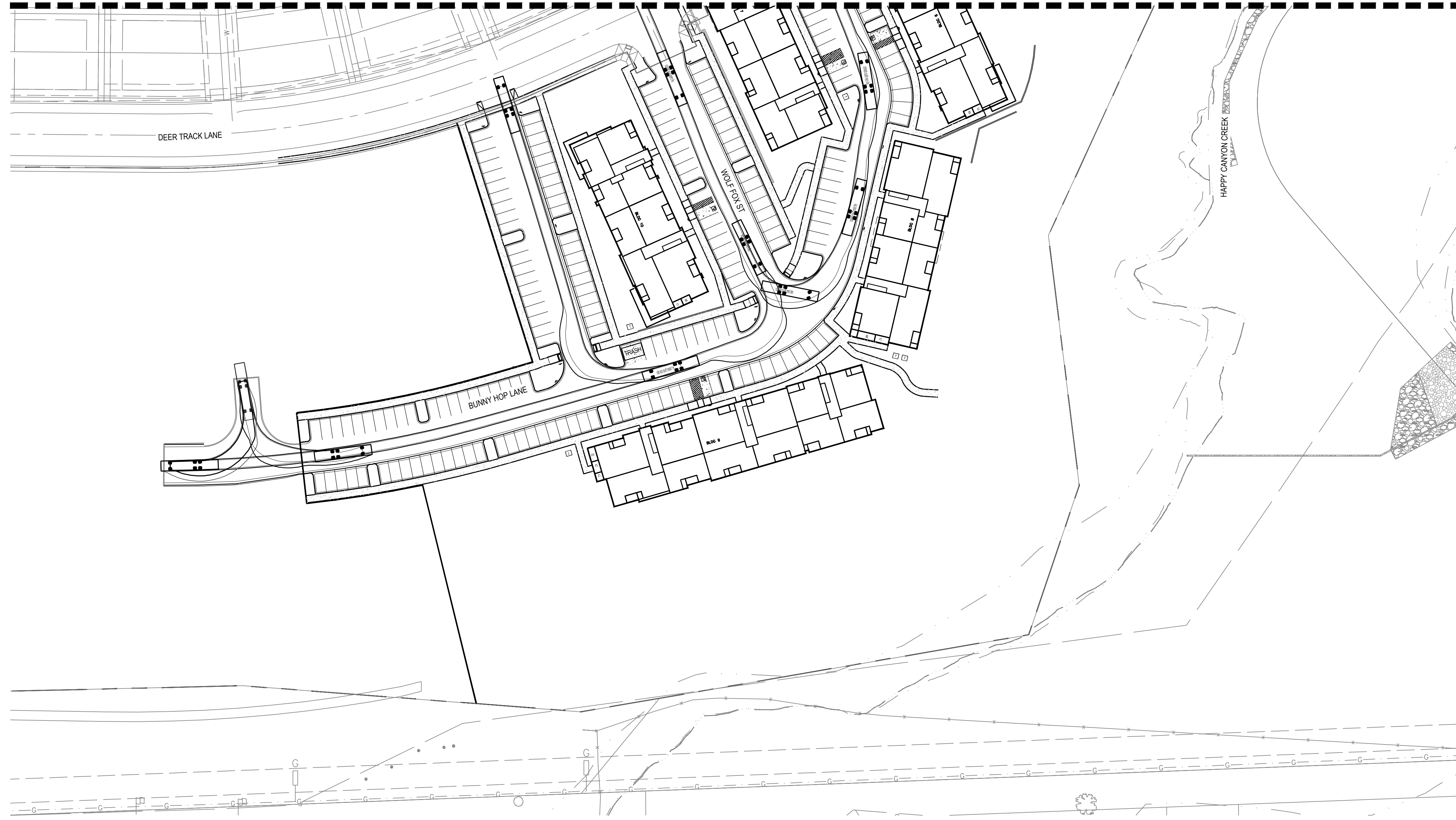
SHEET NUMBER  
**FA 1**

COMPARK VILLAGE SOUTH  
F1 AMD 2 - MULTIFAMILY  
SITE PLAN

LOT 2, COMPARK VILLAGE FILING NO. 1, AMEND NO. 2  
SOUTH HALF SECTION 6, TOWNSHIP 6 SOUTH, RANGE 66 WEST OF THE 6TH PRINCIPAL MERIDIAN  
TOWN OF PARKER, COUNTY OF DOUGLAS, STATE OF COLORADO



MATCH LINE SEE SHEET FA1



colorado south metro fire  
Overall Length 47.79ft  
Overall Width 8.41ft  
Overall Body Height 10.24ft  
Min Body Ground Clearance 0.67ft  
Track Width 6.92ft  
Lock-to-lock time 4.09s  
Wall to Wall Turning Radius 46.66ft

PROJECT NUMBER  
65120950  
  
DRAWN BY  
TV  
  
DATE  
01/12/2022

**MERRICK**  
Engineering | Architecture | Design-Build | Surveying |  
Planning | Geospatial Solutions  
5970 GREENWOOD PLAZA BLVD.  
GREENWOOD VILLAGE, CO. 80111  
303-751-0741  
www.merrick.com

PREPARED FOR CENTURY  
COMMUNITIES



PROJECT  
**COMPARK  
VILLAGE  
SOUTH**

TOWN OF PARKER, COUNTY  
OF DOUGLAS, COLORADO  
80134

SHEET TITLE  
**FIRE TRUCK TURN  
ANALYSIS**

SHEET NUMBER  
**FA 2**