

**COMPARK VILLAGE SOUTH
F1 AMD 2 - MULTIFAMILY
SITE PLAN**
LOT 1, COMPARK VILLAGE FILING NO. 1, AMEND NO. 2
SOUTH HALF SECTION 6, TOWNSHIP 6 SOUTH, RANGE 66 WEST OF THE 6TH PRINCIPAL MERIDIAN
TOWN OF PARKER, COUNTY OF DOUGLAS, STATE OF COLORADO



MODEL: SUSPENSION TRAINER
ITEM #: FAZ10101
SIZE: 12'10"L x 3'6"W x 10'11"H
COLOR: ORANGE
NOTE:
INSTALL PER MANUFACTURER'S SPECS.
SUPPLIER: KOMPAN
WEBSITE: KOMPAN.US

1 **OUTDOOR FITNESS EQUIPMENT**
Scale: NTS



DUAL SLOPE SHELTER WITH STANDING SEAM ROOF PANELS OR APPROVED EQUAL
SIZE: 16'X16'
ROOF COLOR: POWER COAT, BASALT GRAY
NOTE:
• INSTALL PER MANUFACTURER'S SPECS.
• MANUFACTURER TO PROVIDE PROPER DETAILING AND STRUCTURAL INFORMATION
SUPPLIER: ICON SHELTERS
WEBSITE: ICONSHELTERS.COM

2 **SHELTER**
Scale: NTS



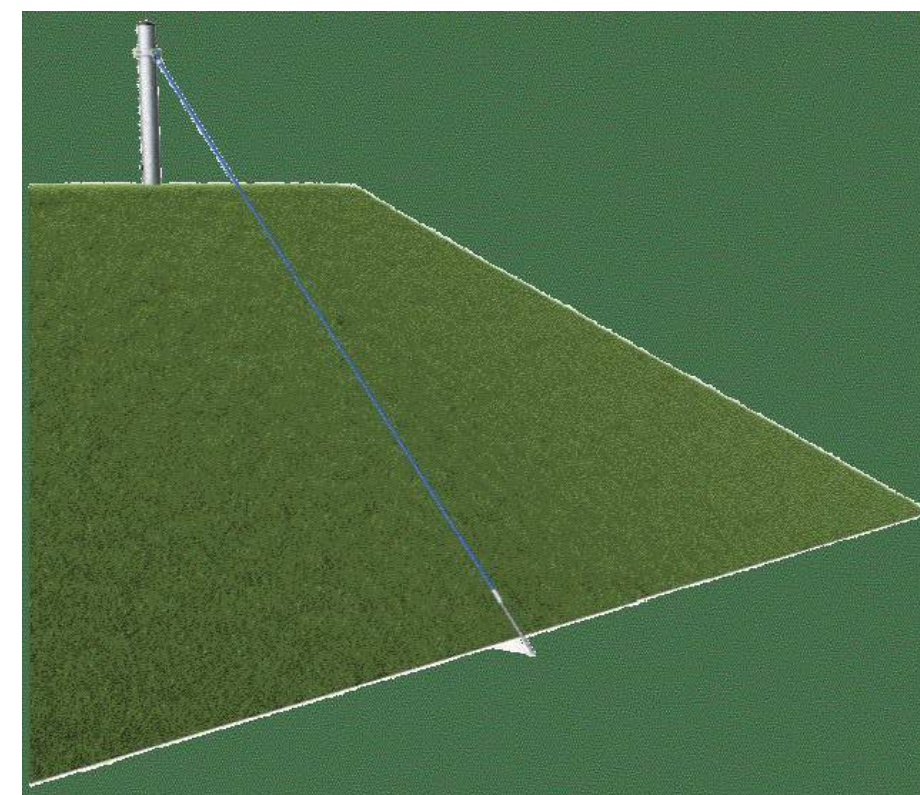
ITEM: S BALANCE BEAM OR APPROVED EQUAL
COLOR: BLUE
NOTE:
INSTALL PER MANUFACTURER'S SPECS
SUPPLIER: BURKE
WEBSITE: BCIBURKE.COM

3 **BALANCE BEAM**
Scale: NTS



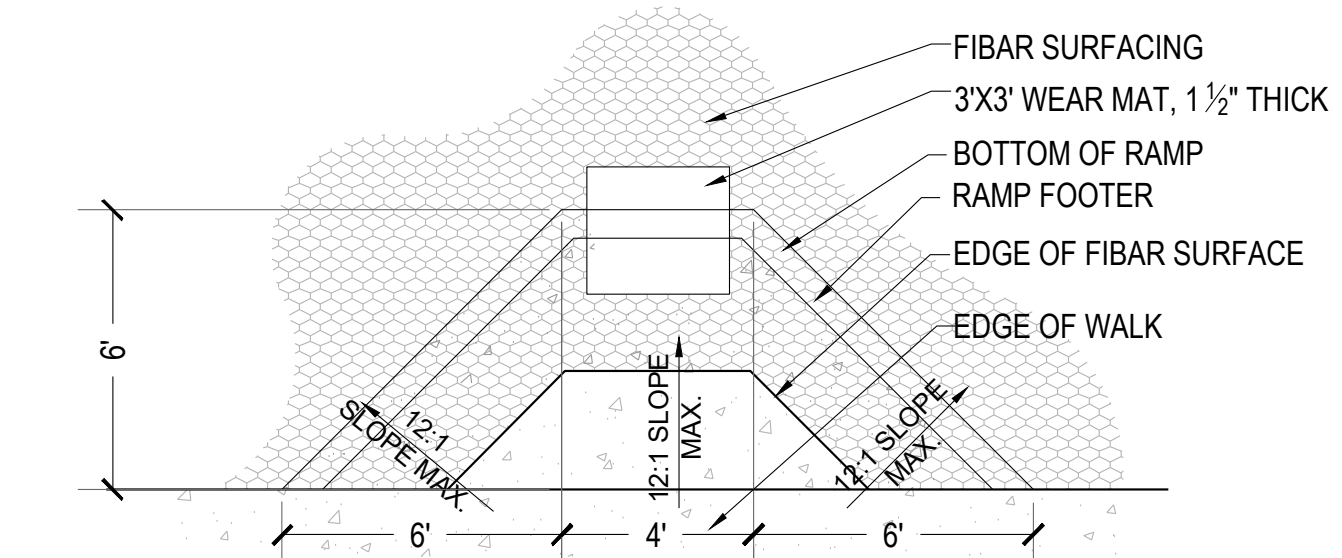
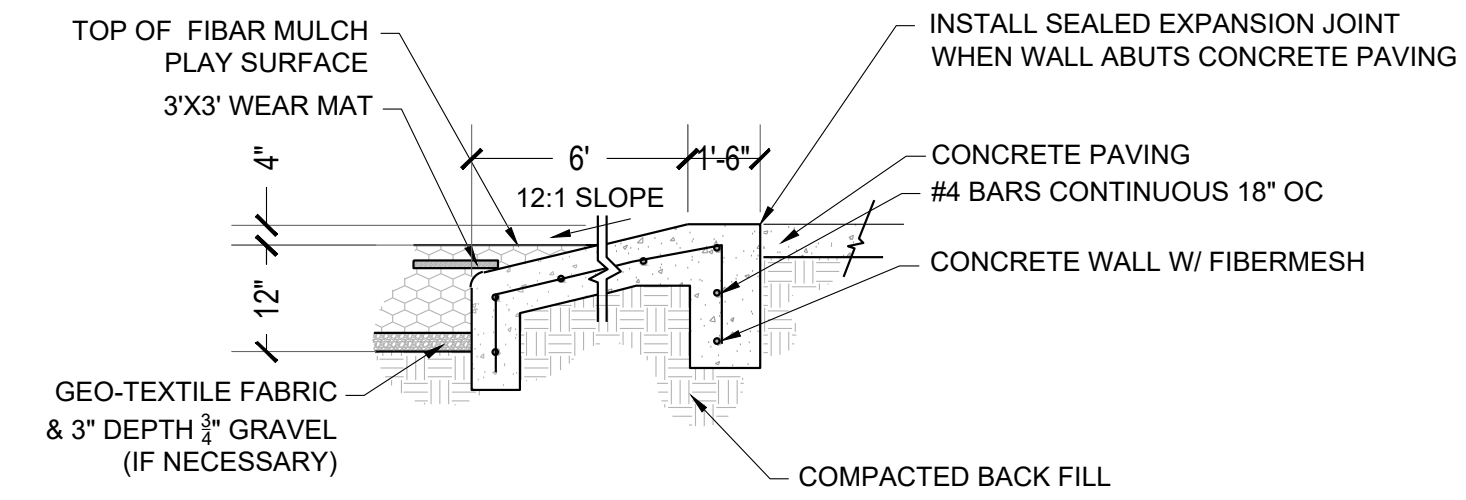
ITEM: EMBANKMENT SLIDE OR APPROVED EQUAL
SLIDE SIZE: 15' 2" x 5' 3" x 3' 7"
MATERIAL: PLASTIC
COLOR: LIME
NOTE:
INSTALL PER MANUFACTURER'S SPECS
SUPPLIER: KOMPAN
WEBSITE: KOMPAN.US

4 **EMBANKMENT SLIDE**
Scale: NTS

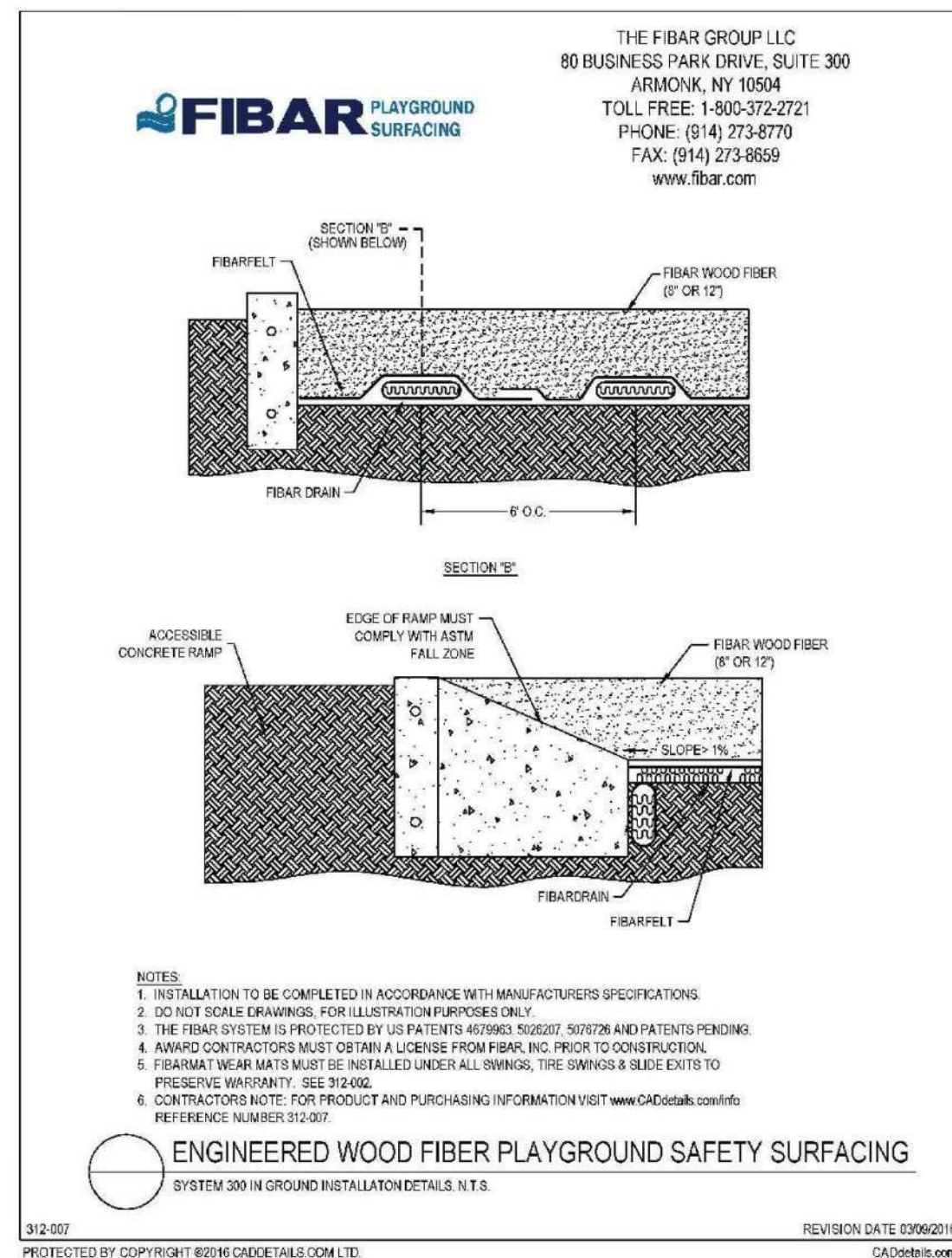


ITEM: HILL CLIMBER ROPE, TYPE 6 OR APPROVED EQUAL
SLIDE SIZE: 16' 8" x 0' 9" x 13' 9"
COLOR: LIGHT BLUE
NOTE:
INSTALL PER MANUFACTURER'S SPECS
SUPPLIER: KOMPAN
WEBSITE: KOMPAN.US

5 **ROPE CLIMBER**
Scale: NTS

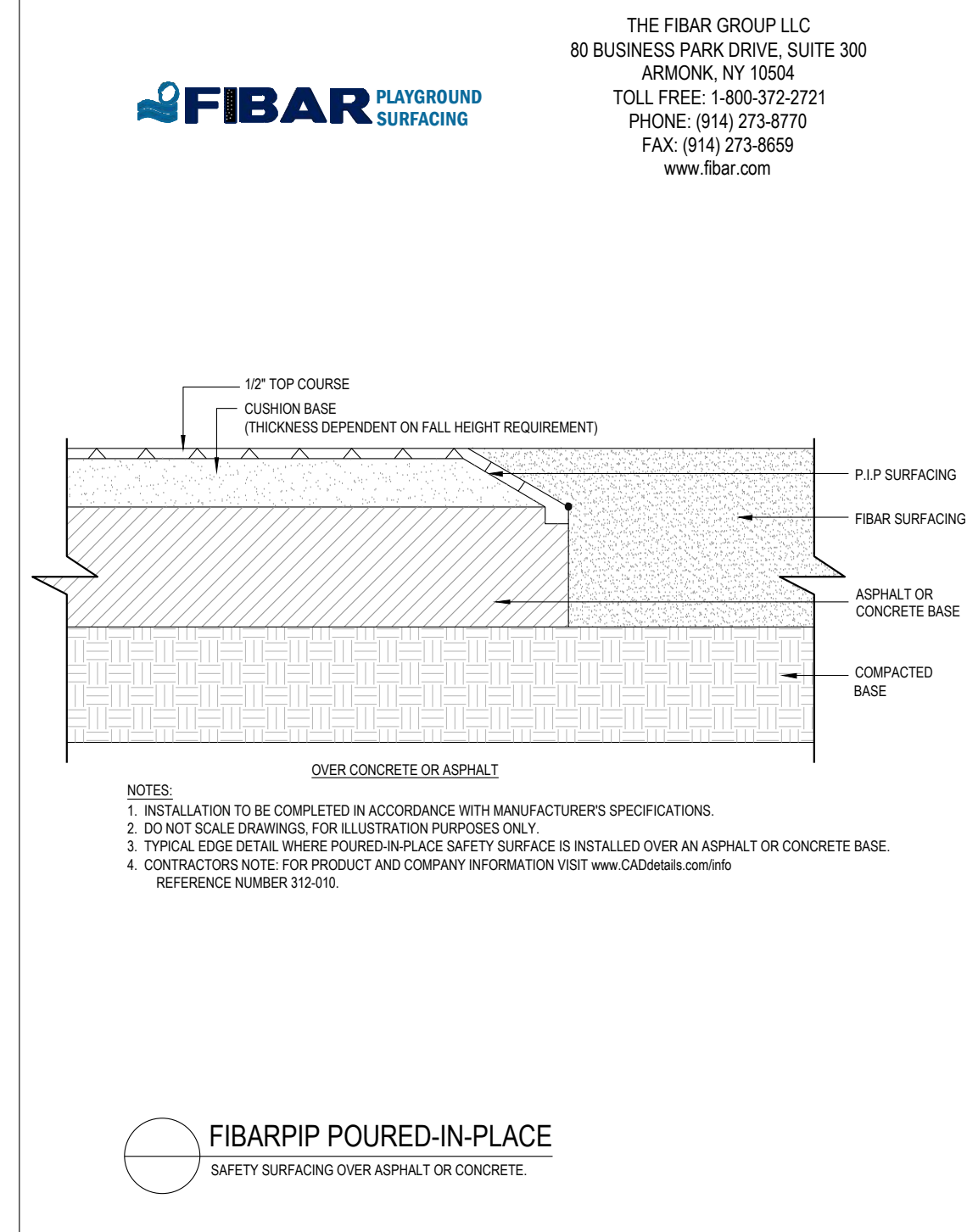


6 **ADA PLAYGROUND RAMP**
Scale: NTS



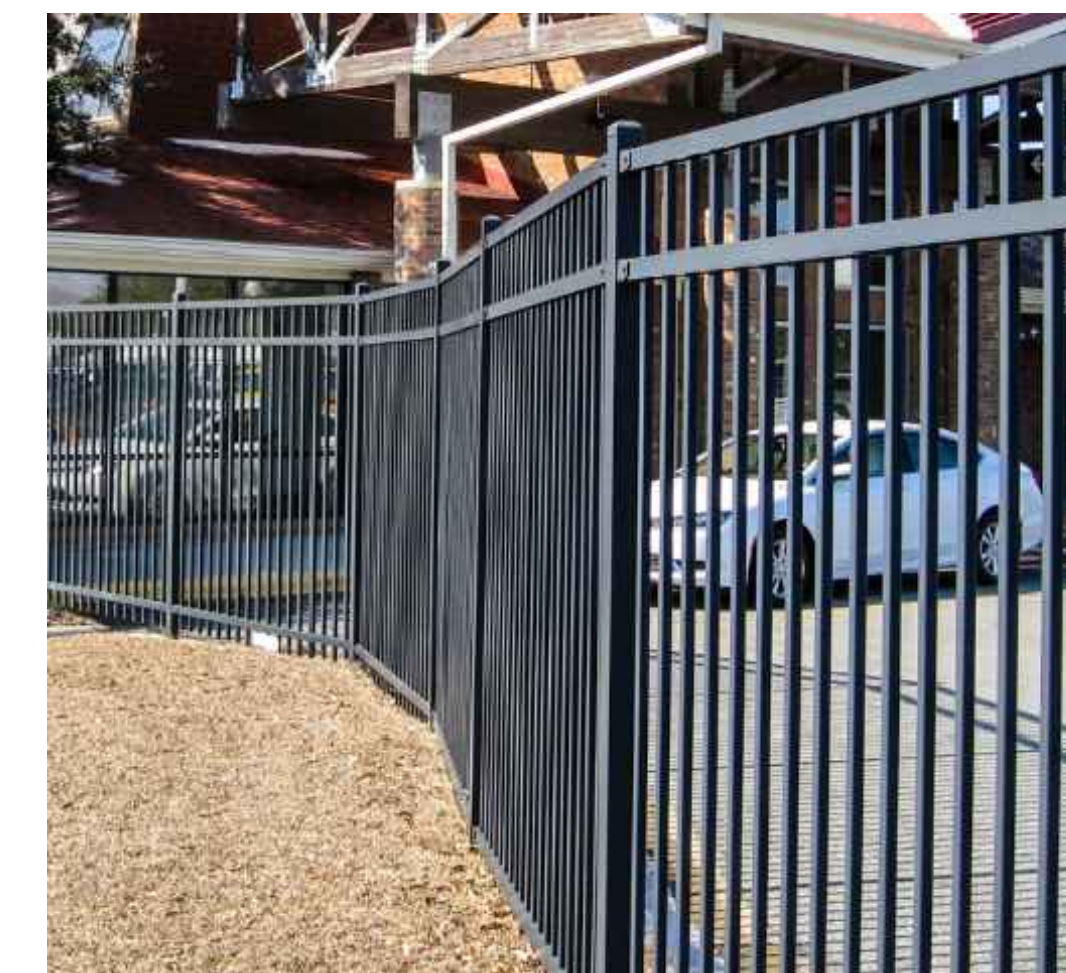
FIBAR 100 SURFACING OR APPROVED EQUAL
NOTE:
INSTALL PER MANUFACTURER'S SPECS.
SUPPLIER: RECREATION PLUS
WEBSITE: RECREATIONPLUS.COM

7 **FIBAR SURFACING**
Scale: NTS



POURED IN PLACE RUBBER PLAYGROUND SURFACE OR APPROVED EQUAL
COLOR: GREEN 067
NOTE:
INSTALL PER MANUFACTURER'S SPECS.
SUPPLIER: RECREATION PLUS
WEBSITE: RECREATIONPLUS.COM

8 **P.I.P. SURFACING**
Scale: NTS



MODEL: ECHELON II OR APPROVED EQUAL
STYLE: MAJESTIC
HEIGHT: 4'-0" MIN.
COLOR: BLACK
NOTE:
• INSTALL PER MANUFACTURER'S INSTRUCTIONS
• STRUCTURAL ENGINEER TO PROVIDE STRUCTURAL DETAILING AND TO STAMP DRAWINGS.
• SEE CIVIL DRAWINGS FOR INFORMATION ON SLEEVE IT SYSTEM FOR INSTALLATION OF FENCE ON TOP OF RETAINING WALL.
SUPPLIER: AMERISTAR
WEBSITE: AMERISTARPERIMETER.COM

9 **PLAYGROUND FENCE**
Scale: NTS

PROJECT NUMBER
65120950
DRAWN BY
AML/MLH
DATE
09/02/2022
people creating spaces
pcs group inc. www.pcsgroupco.com
p.o. box 18287
denver, co 80218
1.303.531.4905 1.303.531.4908

MERRICK
Engineering | Architecture | Design-Build | Surveying |
Planning | Geospatial Solutions
5970 GREENWOOD PLAZA BLVD.
GREENWOOD VILLAGE, CO. 80111
303-751-0741
www.merrick.com

PREPARED FOR CENTURY COMMUNITIES

CENTURY LIVING

COMPARK VILLAGE SOUTH

TOWN OF PARKER, COUNTY OF DOUGLAS, COLORADO 80134

SHEET TITLE
SITE DETAILS

SHEET NUMBER
34 of 66

COMPARK VILLAGE SOUTH
F1 AMD 2 - MULTIFAMILY
SITE PLAN

LOT 1, COMPARK VILLAGE FILING NO. 1, AMEND NO. 2
SOUTH HALF SECTION 6, TOWNSHIP 6 SOUTH, RANGE 66 WEST OF THE 6TH PRINCIPAL MERIDIAN
TOWN OF PARKER, COUNTY OF DOUGLAS, STATE OF COLORADO

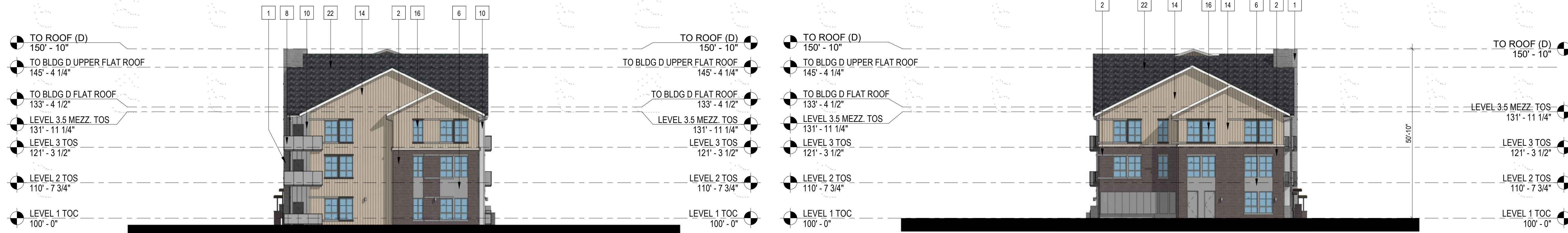
PROJECT NUMBER
210512

DRAWN BY

DATE
06/01/2022



Architecture + Planning
820 16th Street, Suite 500
Denver, CO 80202
ktgy.com
303.825.6400



3 BUILDING D - SIDE ELEVATION
1/16" = 1'-0"

4 BUILDING D - SIDE ELEVATION
1/16" = 1'-0"

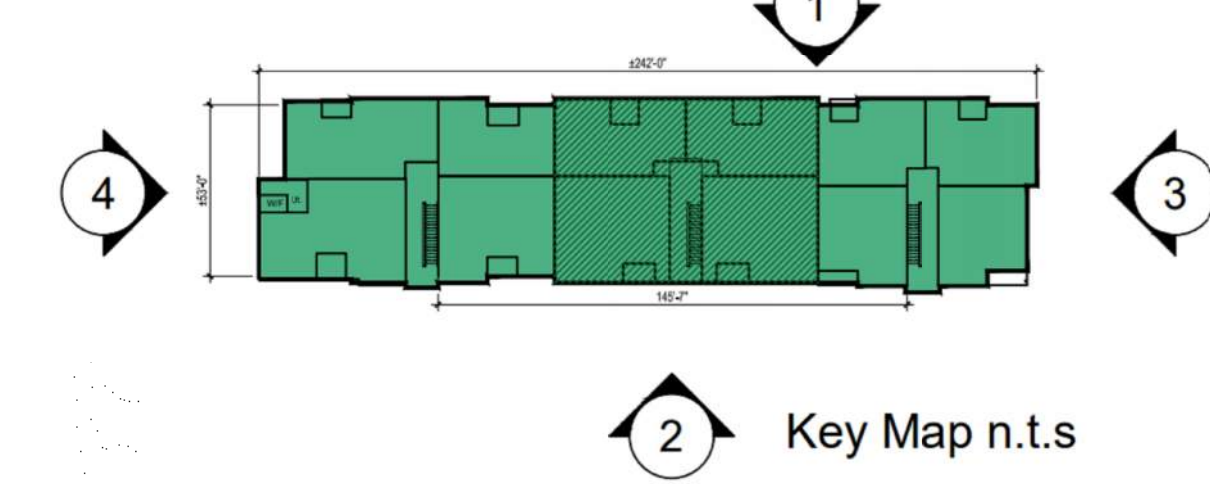


2 BUILDING D - REAR ELEVATION
1/16" = 1'-0"



1 BUILDING D - FRONT ELEVATION
1/16" = 1'-0"

Building D - 36plex w/ Mezzanines
(3-Story Plus)



KEYNOTES - SIP

- | # | KEYNOTES - SIP |
|----|--|
| 1 | BRICK - RUNNING - COLOR 1 |
| 2 | BRICK - RUNNING - COLOR 2 |
| 3 | FIBER CEMENT PANELING - COLOR 1 |
| 4 | FIBER CEMENT PANELING - COLOR 2 |
| 5 | FIBER CEMENT PANELING - COLOR 3 |
| 6 | FIBER CEMENT PANELING - COLOR 4 |
| 7 | METAL PANEL - COLOR 1 |
| 8 | METAL PANEL - COLOR 2 |
| 9 | BOARD AND BATTEN - COLOR 1 |
| 10 | BOARD AND BATTEN - COLOR 2 |
| 11 | VERTICAL SIDING - COLOR 1 |
| 12 | VERTICAL SIDING - COLOR 2 |
| 13 | VERTICAL SIDING - COLOR 3 |
| 14 | VERTICAL SIDING - COLOR 4 |
| 15 | VERTICAL SIDING - COLOR 5 |
| 16 | VINYL WINDOW |
| 18 | METAL RAILING |
| 19 | MECHANICAL SCREEN - 58% OPEN WIRE MESH - COLOR 1 (BLACK) |
| 20 | STOREFRONT |
| 21 | COLUMN |
| 22 | ASPHALT SHINGLE ROOFING |
| 23 | BOARD & BATTEN - COLOR 3 - DARK GREY |
| 24 | STONE - COLOR 1 |
| 25 | EXTERIOR LIGHT FIXTURE |
| 26 | HORIZONTAL SIDING - COLOR 1 |
| 27 | HORIZONTAL SIDING - COLOR 2 |
| 28 | HORIZONTAL SIDING - COLOR 3 |
| 29 | HORIZONTAL SIDING - COLOR 4 |
| 30 | HORIZONTAL SIDING - COLOR 5 |
| 32 | DOWNSPOUT |

- NOTES:
1. SEE MATERIAL BOARDS FOR MORE INFORMATION.
2. SEE SITE PLAN FOR DIMENSIONS BETWEEN ENTRIES.
3. GROUND FLOOR TRANSPARENCY TO BE MIN. OF 25% MEASURED AS A PERCENTAGE OF GLAZING AT THE BASE OF THE BUILDING.
4. UPPER FLOOR TRANSPARENCY TO BE MIN. OF 15% GLAZING MEASURED AS A PERCENTAGE OF GLAZING ON THE MIDDLE OF THE BUILDING.
5. TRIM AROUND WINDOWS SHALL BE A MINIMUM OF THREE AND ONE-HALF (3 1/2) INCHES WIDE, AND TRIM AROUND DOORS SHOULD BE A MINIMUM OF TWO (2) INCHES WIDE.

PREPARED FOR CENTURY COMMUNITIES



PROJECT
COMPARK VILLAGE SOUTH

TOWN OF PARKER, COUNTY OF DOUGLAS, COLORADO 80134

SHEET TITLE
BUILDING D ELEVATIONS

SHEET NUMBER
59

COMPARK VILLAGE SOUTH
F1 AMD 2 - MULTIFAMILY
SITE PLAN

LOT 1, COMPARK VILLAGE FILING NO. 1, AMEND NO. 2
SOUTH HALF SECTION 6, TOWNSHIP 6 SOUTH, RANGE 66 WEST OF THE 6TH PRINCIPAL MERIDIAN
TOWN OF PARKER, COUNTY OF DOUGLAS, STATE OF COLORADO

PROJECT NUMBER
210512

DRAWN BY

DATE
06/01/2022



KEY MAP - n.t.s
BUILDING D

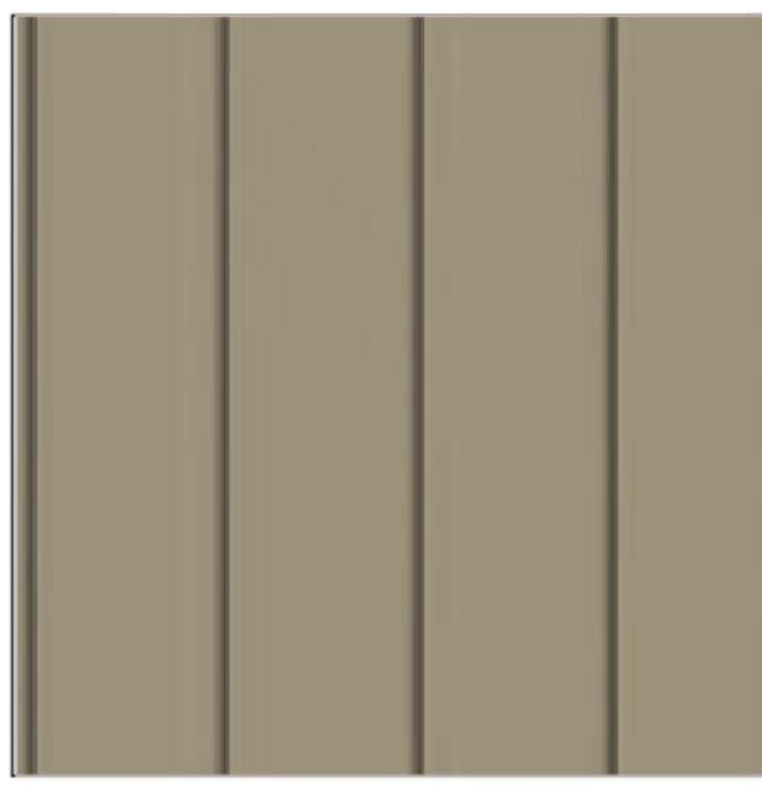


FRONT ELEVATION
Note: Trim around windows shall be minimum of three and one-half (3-1/2) inches wide, and trim around doors shall be a minimum of (2) inches wide.

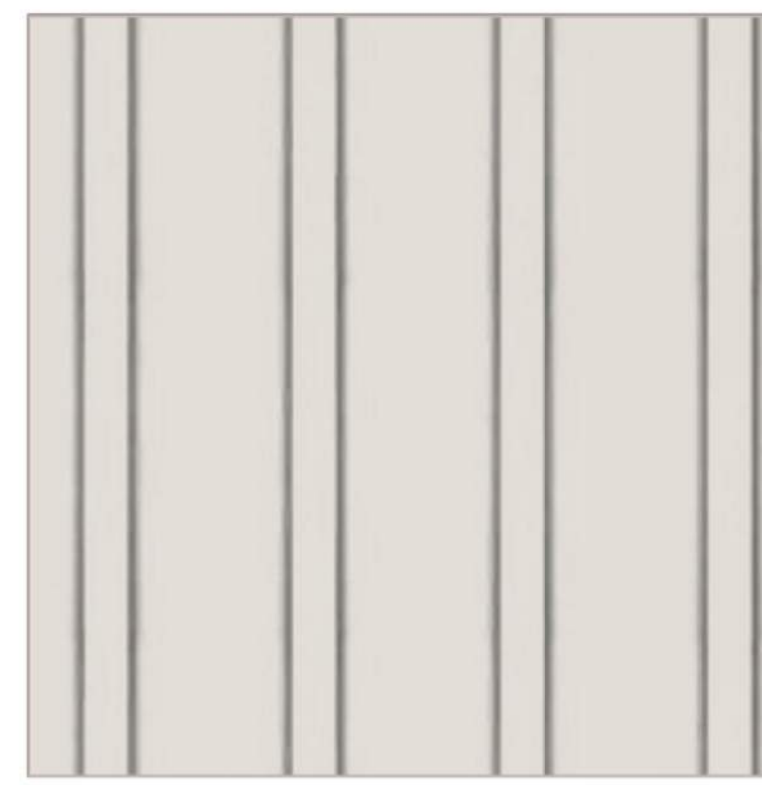
BRICK LIGHT BRICK



14 VERTICAL SIDING (WOOD TONE)



19 VERTICAL SIDING (V-GROOVE)



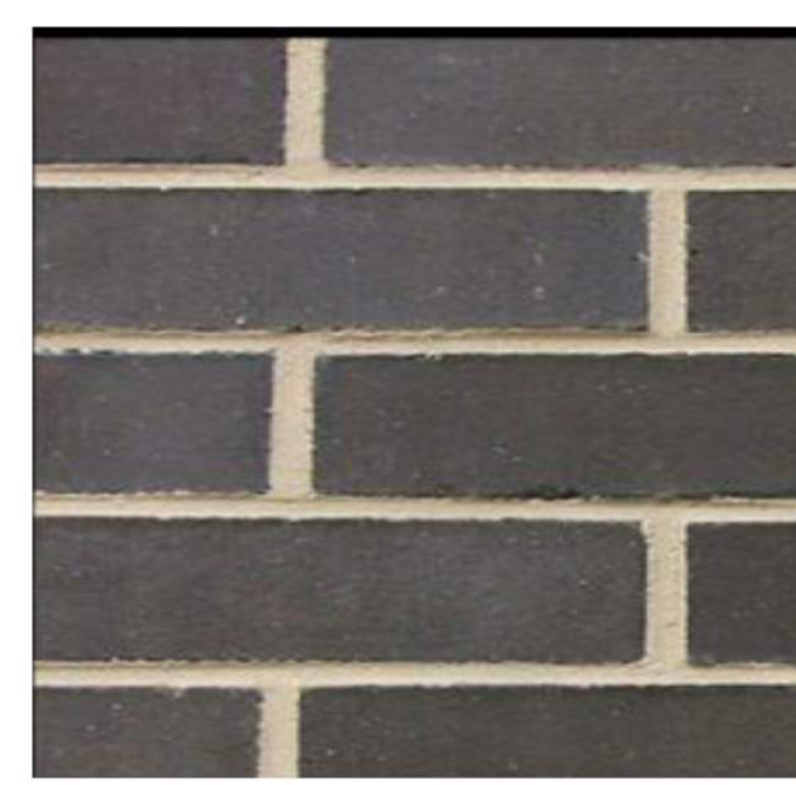
4 CEMENTITIOUS PANEL W/ REVEAL



28 HORIZONTAL SIDING (V-GROOVE)



BRICK DARK BRICK



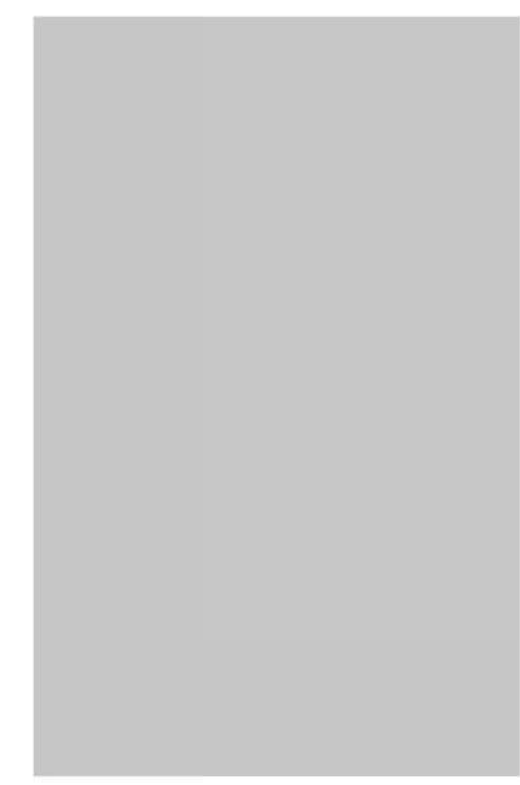
8 METAL PANEL



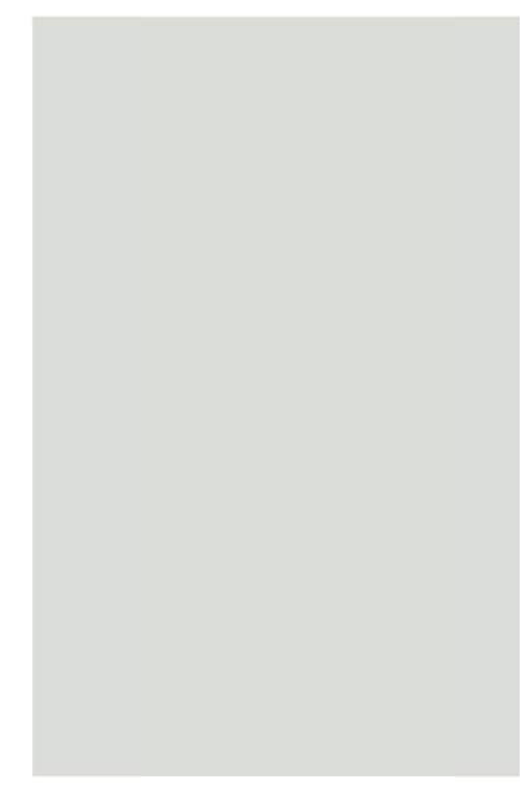
5 CEMENTITIOUS PANEL



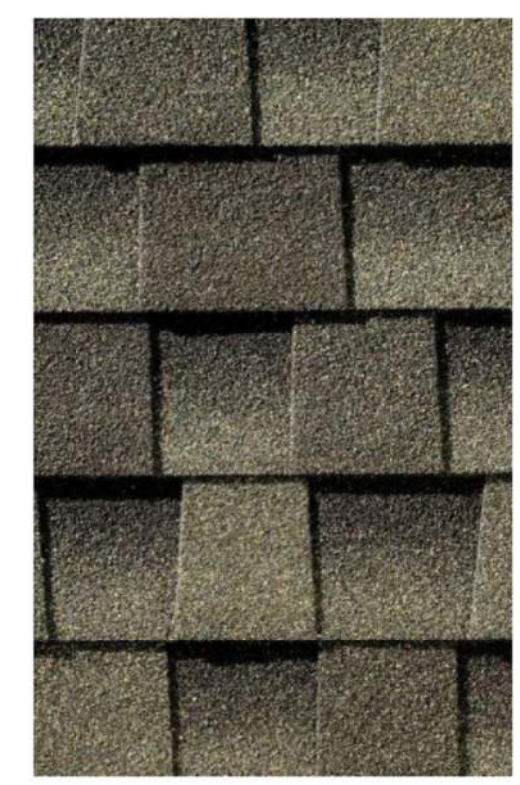
6 CEMENTITIOUS PANEL



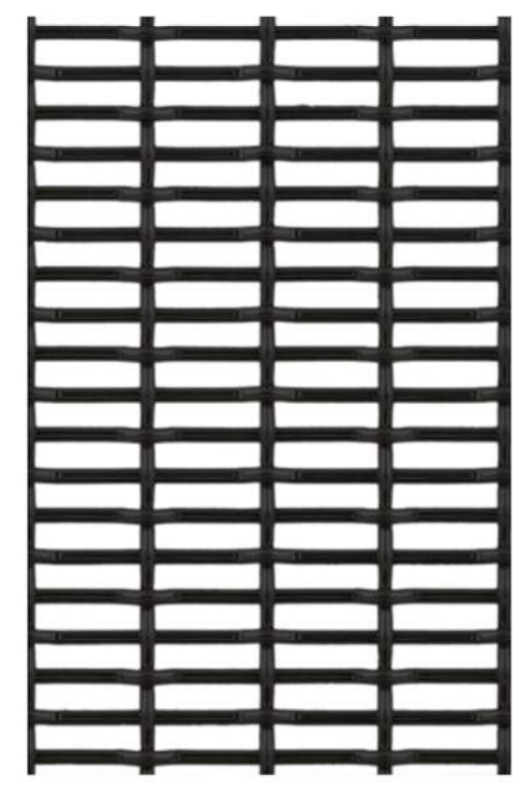
**ADOBE (NON-WHITE)
16 WINDOW FRAME**



22 ROOF



19 ROOF SCREEN



PREPARED FOR CENTURY
COMMUNITIES



PROJECT

**COMPARK
VILLAGE
SOUTH**

TOWN OF PARKER,
COUNTY
OF DOUGLAS, COLORADO
80134

SHEET TITLE

**BLDG D
MATERIAL
BOARD**

SHEET NUMBER
60

COMPARK VILLAGE SOUTH
F1 AMD 2 - MULTIFAMILY
SITE PLAN

LOT 1, COMPARK VILLAGE FILING NO. 1, AMEND NO. 2
SOUTH HALF SECTION 6, TOWNSHIP 6 SOUTH, RANGE 66 WEST OF THE 6TH PRINCIPAL MERIDIAN
TOWN OF PARKER, COUNTY OF DOUGLAS, STATE OF COLORADO

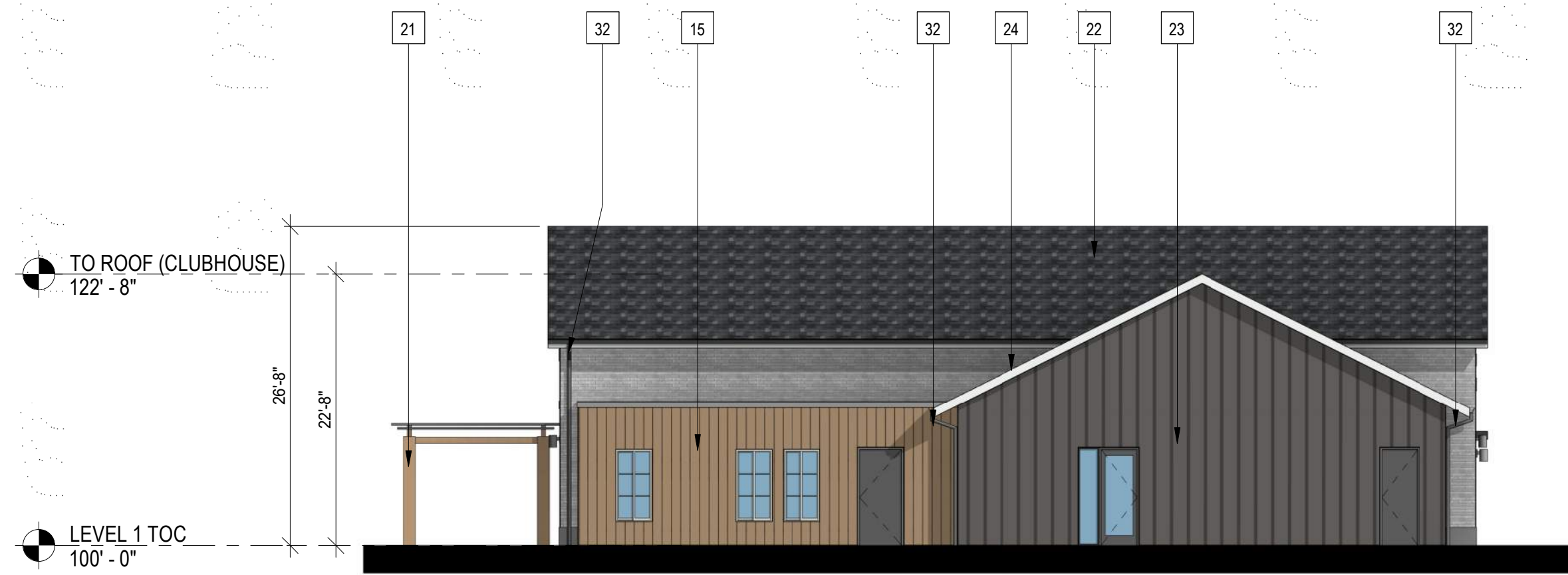
PROJECT NUMBER
210512

DRAWN BY

DATE
06/01/2022



Architecture + Planning
820 16th Street, Suite 500
Denver, CO 80202
ktgy.com
303.825.6400



4 CLUBHOUSE - SIDE ELEVATION
3/32" = 1'-0"



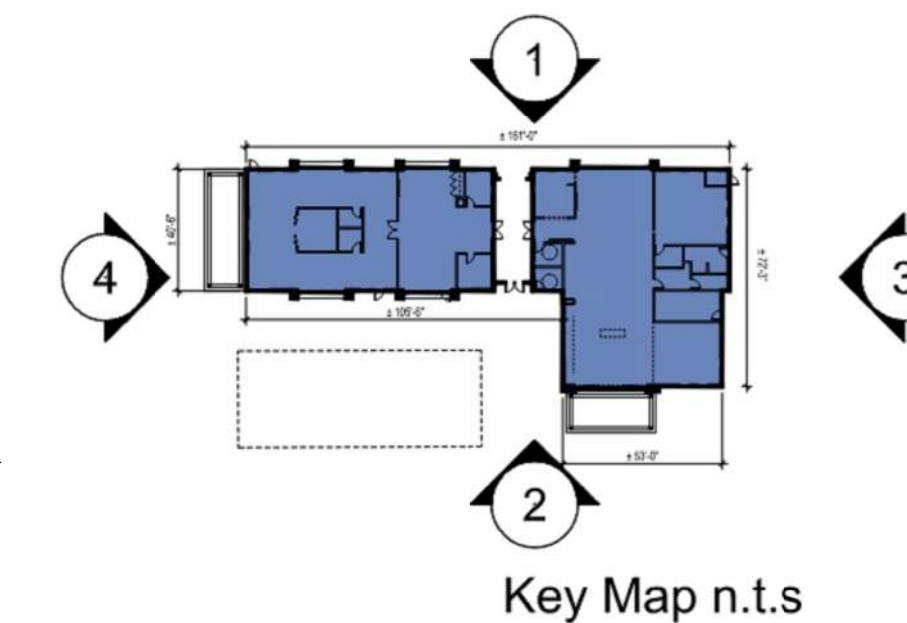
3 CLUBHOUSE - SIDE ELEVATION
3/32" = 1'-0"



2 CLUBHOUSE - REAR ELEVATION
3/32" = 1'-0"



1 CLUBHOUSE - FRONT ELEVATION
3/32" = 1'-0"



#	KEYNOTES - SIP
1	BRICK - RUNNING - COLOR 1
2	BRICK - RUNNING - COLOR 2
3	FIBER CEMENT PANELING - COLOR 1
4	FIBER CEMENT PANELING - COLOR 2
5	FIBER CEMENT PANELING - COLOR 3
6	FIBER CEMENT PANELING - COLOR 4
7	METAL PANEL - COLOR 1
8	METAL PANEL - COLOR 2
9	BOARD AND BATTEN - COLOR 1
10	BOARD AND BATTEN - COLOR 2
11	VERTICAL SIDING - COLOR 1
12	VERTICAL SIDING - COLOR 2
13	VERTICAL SIDING - COLOR 3
14	VERTICAL SIDING - COLOR 4
15	VERTICAL SIDING - COLOR 5
16	VINYL WINDOW
18	METAL RAILING
19	MECHANICAL SCREEN - 58% OPEN WIRE MESH - COLOR 1 (BLACK)
20	STOREFRONT
21	COLUMN
22	ASPHALT SHINGLE ROOFING
23	BOARD & BATTEN - COLOR 3 - DARK GREY
24	STONE - COLOR 1
25	EXTERIOR LIGHT FIXTURE
26	HORIZONTAL SIDING - COLOR 1
27	HORIZONTAL SIDING - COLOR 2
28	HORIZONTAL SIDING - COLOR 3
29	HORIZONTAL SIDING - COLOR 4
30	HORIZONTAL SIDING - COLOR 5
32	DOWNSPOUT

NOTES:
1. SEE MATERIAL BOARDS FOR MORE INFORMATION.
2. SEE SITE PLAN FOR DIMENSIONS BETWEEN ENTRIES.
3. GROUND FLOOR TRANSPARENCY TO BE MIN. OF 25% MEASURED AS A PERCENTAGE OF GLAZING AT THE BASE OF THE BUILDING.
4. TRIM AROUND WINDOWS SHALL BE A MINIMUM OF THREE AND ONE-HALF (3 1/2) INCHES WIDE, AND TRIM AROUND DOORS SHOULD BE A MINIMUM OF TWO (2) INCHES WIDE.

PREPARED FOR CENTURY
COMMUNITIES



PROJECT

COMPARK
VILLAGE
SOUTH

TOWN OF PARKER,
COUNTY
OF DOUGLAS, COLORADO
80134

SHEET TITLE

CLUBHOUSE
BUILDING
ELEVATIONS

SHEET NUMBER

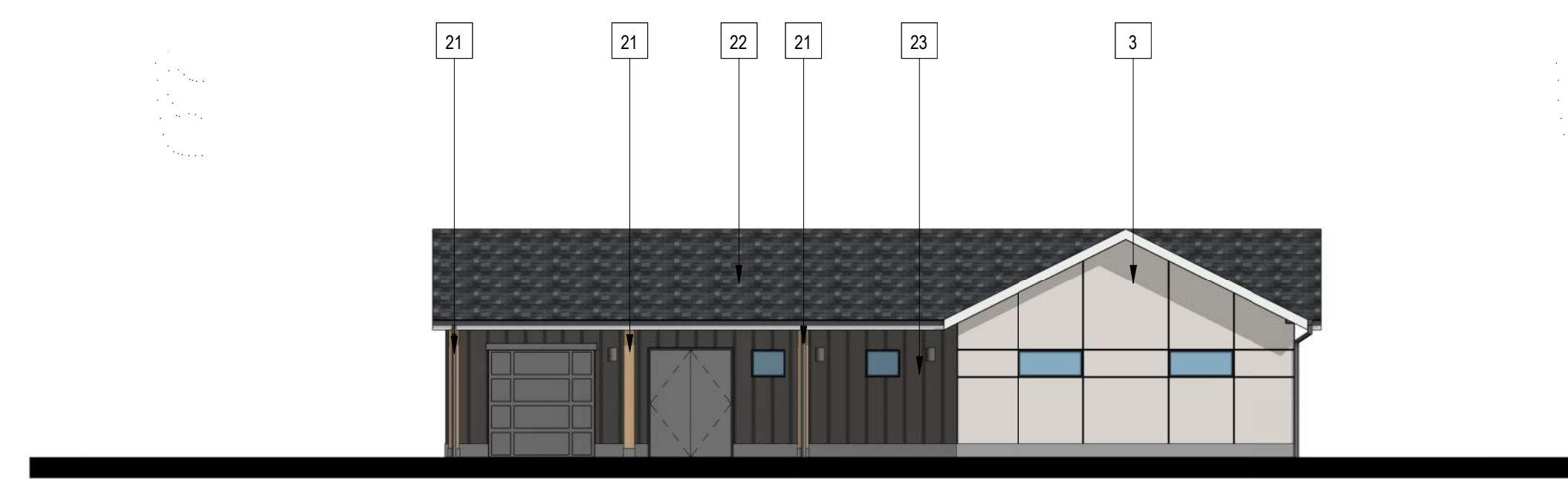
61

COMPARK VILLAGE SOUTH
F1 AMD 2 - MULTIFAMILY
SITE PLAN

LOT 1, COMPARK VILLAGE FILING NO. 1, AMEND NO. 2
SOUTH HALF SECTION 6, TOWNSHIP 6 SOUTH, RANGE 66 WEST OF THE 6TH PRINCIPAL MERIDIAN
TOWN OF PARKER, COUNTY OF DOUGLAS, STATE OF COLORADO



KEY MAP - n.t.s
**CLUBHOUSE / MAINTENANCE
SHED**



FRONT ELEVATION
Note: Trim around windows shall be minimum of three and one-half (3-1/2) inches wide, and trim around doors shall be a minimum of (2) inches wide.



FRONT ELEVATION
Note: Trim around windows shall be minimum of three and one-half (3-1/2) inches wide, and trim around doors shall be a minimum of (2) inches wide.

24 STONE LIGHT STONE



23 BOARD AND BATTEN



15 VERTICAL SIDING (WOOD TONE)



3 CEMENTITIOUS PANEL W/ REVEAL



21 COMPOSITE WOOD



ADOBE (NON-WHITE)
16 WINDOW FRAME



20 WINDOW FRAME



PROJECT NUMBER
210512
DRAWN BY
DATE
06/01/2022



Architecture + Planning
820 16th Street, Suite 500
Denver, CO 80202
ktgy.com
303.825.6400

PREPARED FOR CENTURY
COMMUNITIES



PROJECT
**COMPARK
VILLAGE
SOUTH**

TOWN OF PARKER,
COUNTY
OF DOUGLAS, COLORADO
80134

SHEET TITLE
**CLUBHOUSE
AND SHED
MATERIAL
BOARD**
SHEET NUMBER
62

COMPARK VILLAGE SOUTH
F1 AMD 2 - MULTIFAMILY
SITE PLAN

LOT 1, COMPARK VILLAGE FILING NO. 1, AMEND NO. 2
SOUTH HALF SECTION 6, TOWNSHIP 6 SOUTH, RANGE 66 WEST OF THE 6TH PRINCIPAL MERIDIAN
TOWN OF PARKER, COUNTY OF DOUGLAS, STATE OF COLORADO

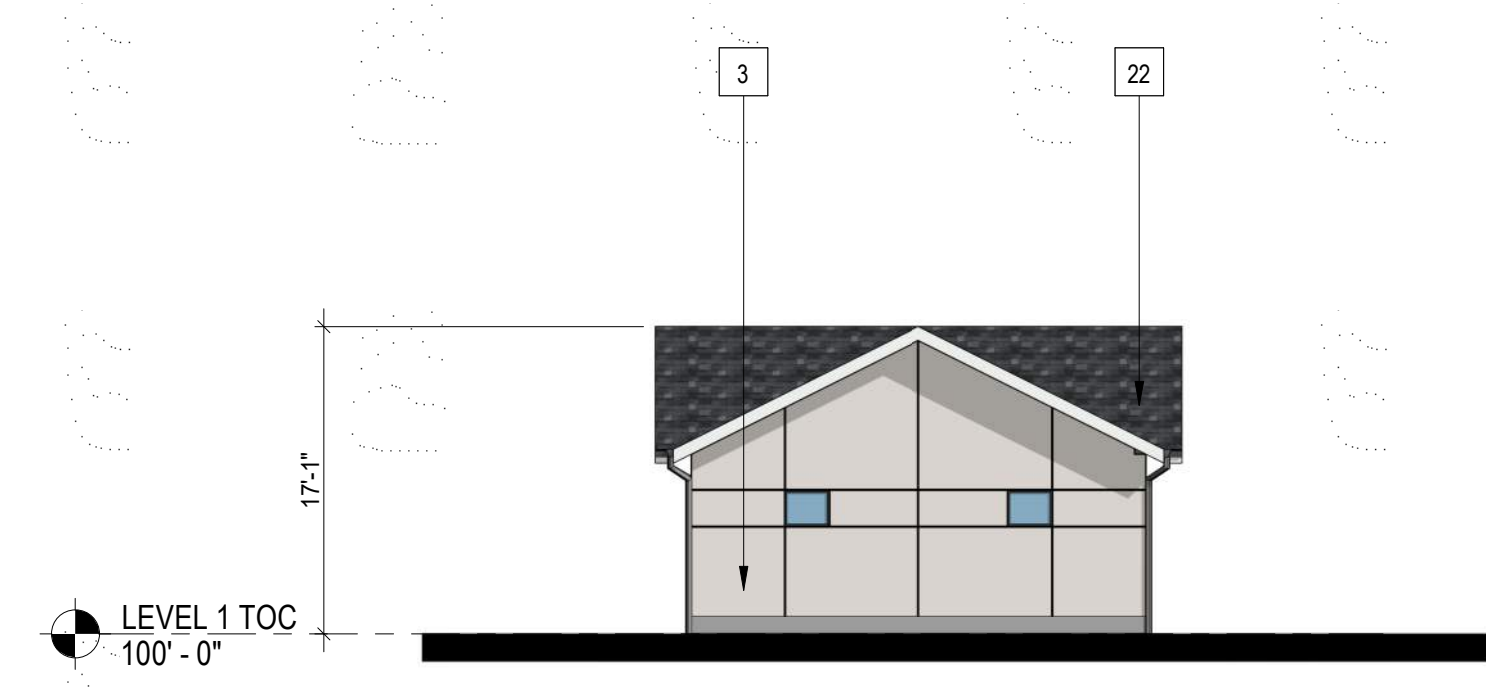
PROJECT NUMBER
210512

DRAWN BY

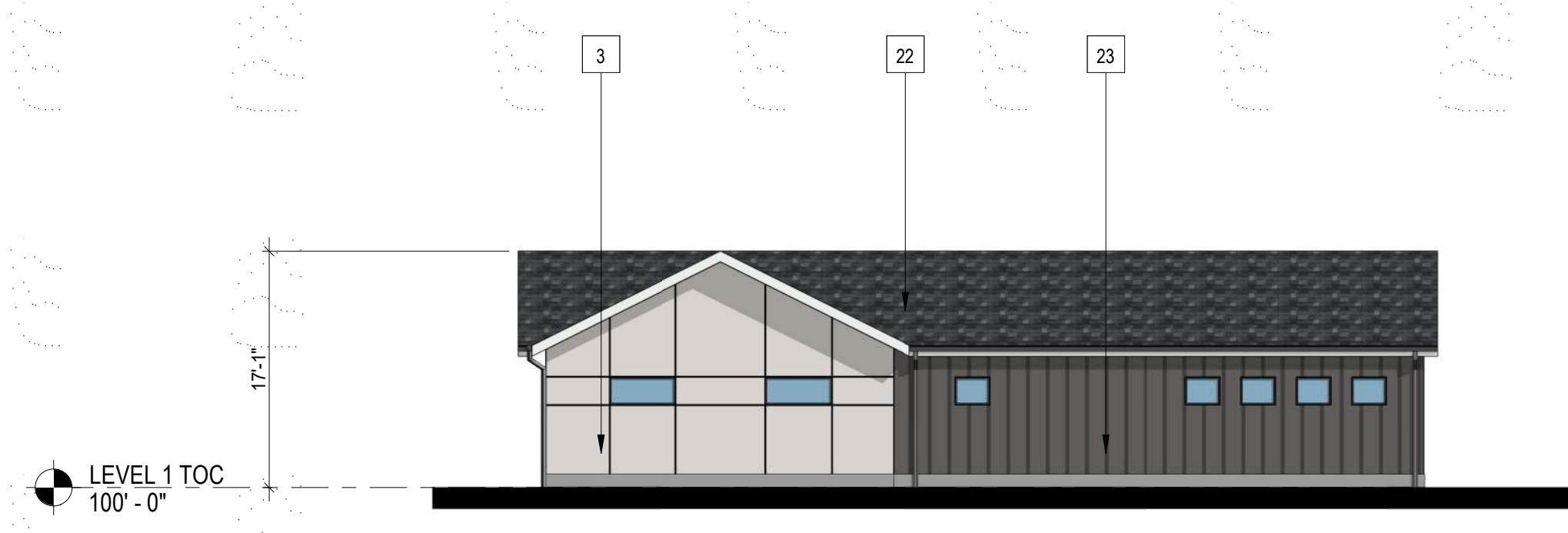
DATE
06/01/2022



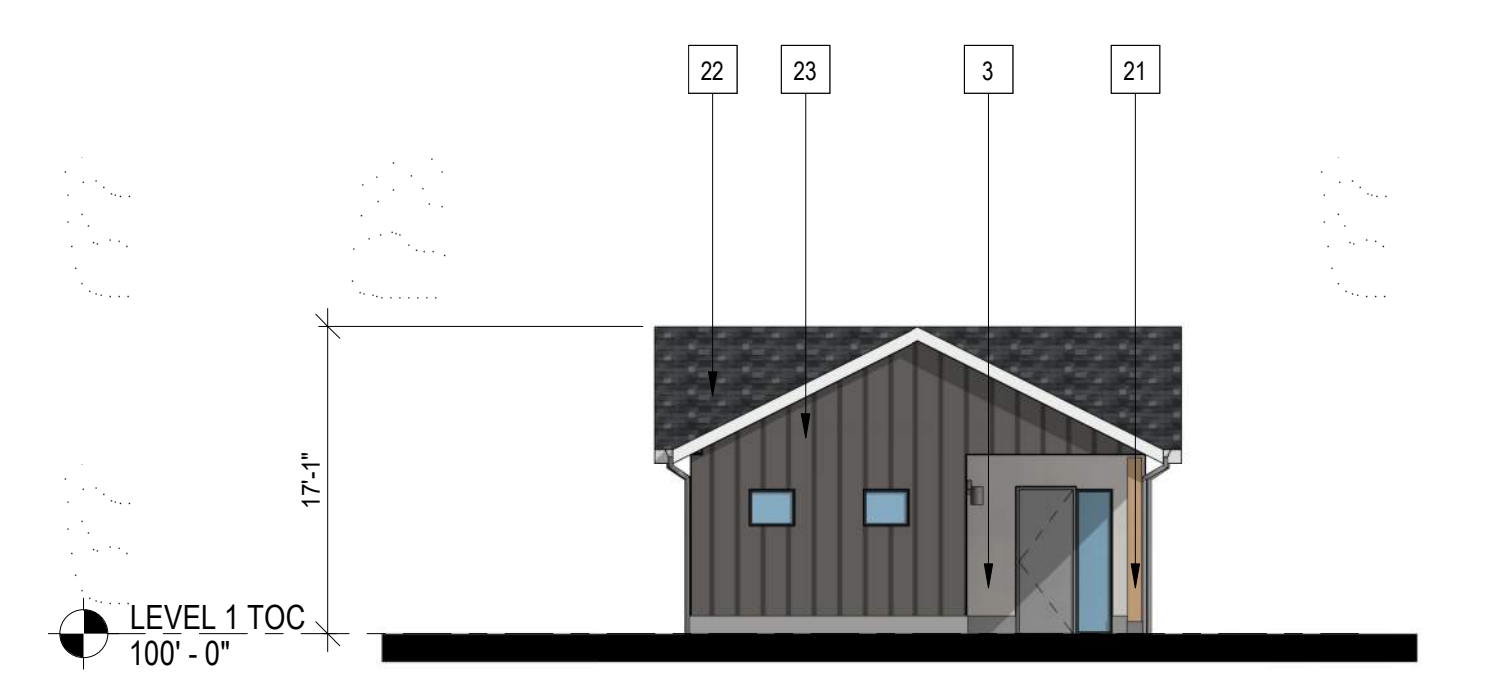
Architecture + Planning
820 16th Street, Suite 500
Denver, CO 80202
ktgy.com
303.825.6400



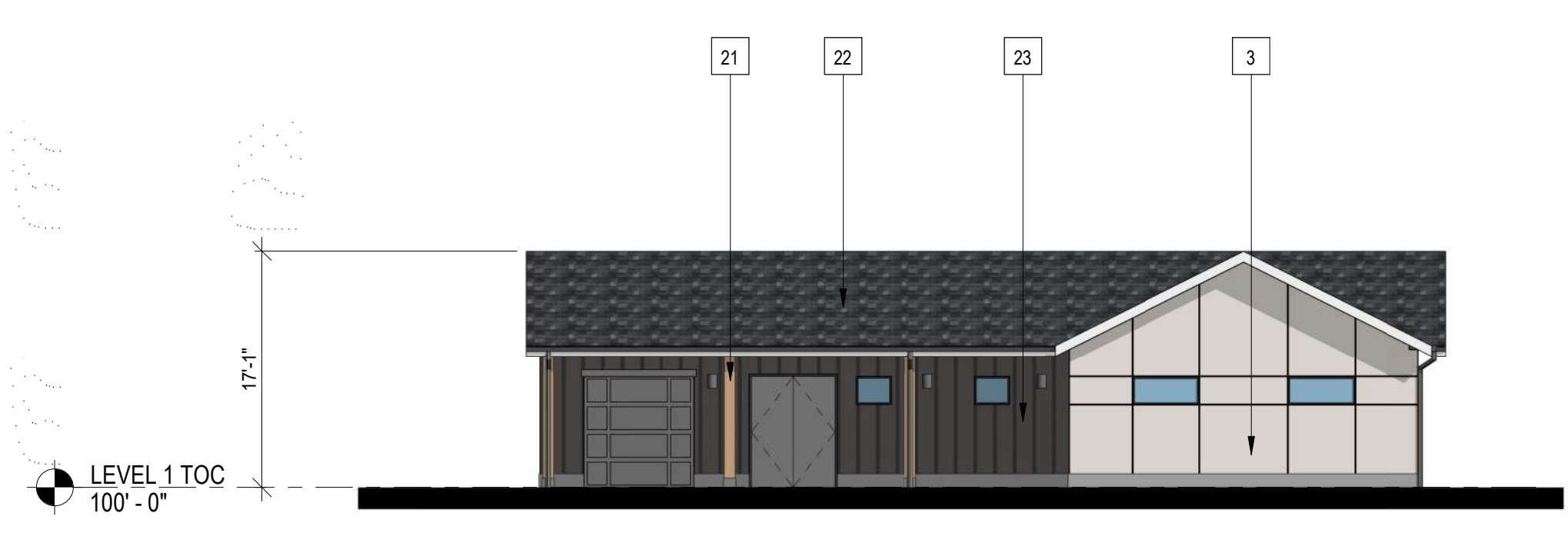
4 BUILDING E - SIDE ELEVATION
3/32" = 1'-0"



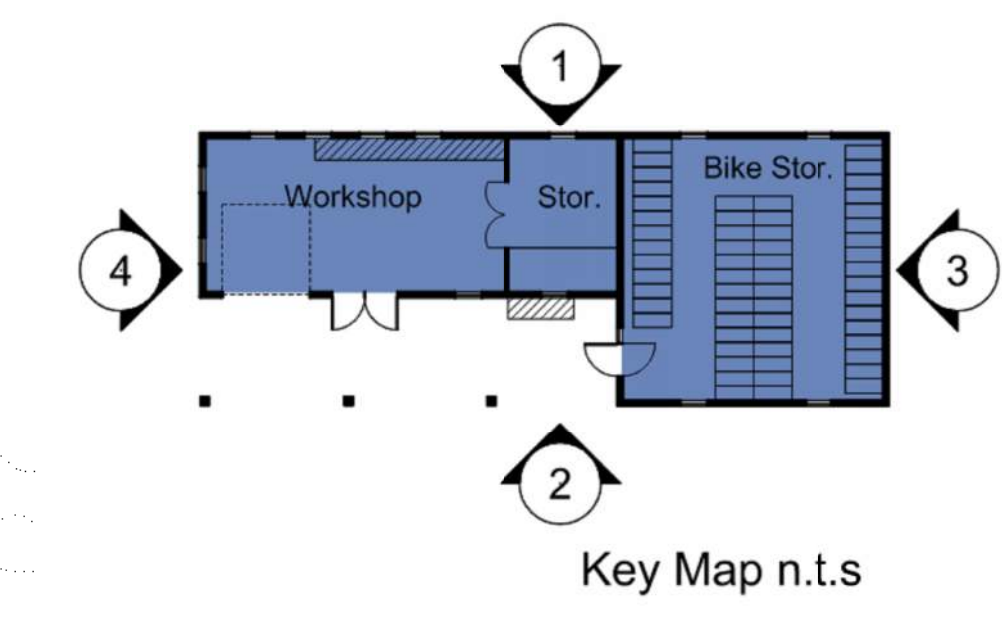
2 BUILDING E - REAR ELEVATION
3/32" = 1'-0"



3 BUILDING E - SIDE ELEVATION
3/32" = 1'-0"



1 BUILDING E - FRONT ELEVATION
3/32" = 1'-0"



#	KEYNOTES - SIP
1	BRICK - RUNNING - COLOR 1
2	BRICK - RUNNING - COLOR 2
3	FIBER CEMENT PANELING - COLOR 1
4	FIBER CEMENT PANELING - COLOR 2
5	FIBER CEMENT PANELING - COLOR 3
6	FIBER CEMENT PANELING - COLOR 4
7	METAL PANEL - COLOR 1
8	METAL PANEL - COLOR 2
9	BOARD AND BATTEN - COLOR 1
10	BOARD AND BATTEN - COLOR 2
11	VERTICAL SIDING - COLOR 1
12	VERTICAL SIDING - COLOR 2
13	VERTICAL SIDING - COLOR 3
14	VERTICAL SIDING - COLOR 4
15	VERTICAL SIDING - COLOR 5
16	VINYL WINDOW
18	METAL RAILING
19	MECHANICAL SCREEN - 58% OPEN WIRE MESH - COLOR 1 (BLACK)
20	STOREFRONT
21	COLUMN
22	ASPHALT SHINGLE ROOFING
23	BOARD & BATTEN - COLOR 3 - DARK GREY
24	STONE - COLOR 1
25	EXTERIOR LIGHT FIXTURE
26	HORIZONTAL SIDING - COLOR 1
27	HORIZONTAL SIDING - COLOR 2
28	HORIZONTAL SIDING - COLOR 3
29	HORIZONTAL SIDING - COLOR 4
30	HORIZONTAL SIDING - COLOR 5
32	DOWNSPOUT

NOTES:
1. SEE MATERIAL BOARDS FOR MORE INFORMATION.
2. SEE SITE PLAN FOR DIMENSIONS BETWEEN ENTRIES.
3. GROUND FLOOR TRANSPARENCY TO BE MIN. OF 25% MEASURED AS A PERCENTAGE OF GLAZING AT THE BASE OF THE BUILDING.
4. TRIM AROUND WINDOWS SHALL BE A MINIMUM OF THREE AND ONE-HALF (3 1/2) INCHES WIDE, AND TRIM AROUND DOORS SHOULD BE A MINIMUM OF TWO (2) INCHES WIDE.

PREPARED FOR CENTURY COMMUNITIES



PROJECT

COMPARK VILLAGE SOUTH

TOWN OF PARKER, COUNTY OF DOUGLAS, COLORADO 80134

SHEET TITLE

MAINTENANCE SHED ELEVATIONS

SHEET NUMBER

COMPARK VILLAGE SOUTH
F1 AMD 2 - MULTIFAMILY
SITE PLAN

LOT 1, COMPARK VILLAGE FILING NO. 1, AMEND NO. 2
SOUTH HALF SECTION 6, TOWNSHIP 6 SOUTH, RANGE 66 WEST OF THE 6TH PRINCIPAL MERIDIAN
TOWN OF PARKER, COUNTY OF DOUGLAS, STATE OF COLORADO



GENERAL NOTES:

1. ANY PROPOSED LIGHT FIXTURES INSTALLED ON PRIVATE PROPERTY, ADJACENT TO THE PUBLIC RIGHT-OF-WAY, SHALL BE ORIENTED IN SUCH A MANNER OR LIMITED IN LUMEN OUTPUT TO PREVENT GLARE PROBLEMS AND SHALL NOT EXCEED NATIONAL I.E.S. LIGHTING STANDARDS FOR DISABILITY GLARE.

SITE LIGHT FIXTURE SCHEDULE

TYPE	SERVES	DESCRIPTION	MANUFACTURER CATALOG NO.	LAMPS	NOTES
S41	SITE	POLE MOUNTED FIXTURE	GARDCO ECF-S-32L-530-WW-G2-LCL	55 W	20'
S42	SITE	POLE MOUNTED FIXTURE	GARDCO ECF-S-32L-530-WW-G2-RCL	55 W	20'
S43	SITE	POLE MOUNTED FIXTURE	GARDCO ECF-S-32L-530-WW-G2-HIS	55 W	20'
S44	SITE	POLE MOUNTED FIXTURE	GARDCO ECF-S-32L-530-WW-G2-2-HIS	55 W	20'
SB	SITE	POLE MOUNTED FIXTURE	GARDCO P20-C-A01-830-T2S-EHS	21 W	10'
SC	SITE	POLE MOUNTED FIXTURE	GARDCO ECF-S-32L-700-WW-G2-4-HIS	73 W	10'
SD	SITE	WALL SCONCE	GARDCO_111L-16L-350-NW-G2-4	18 W	10'

REFER TO SITE PLAN SYMBOLS AND LIGHTING TAGS FOR LIGHT FIXTURE MOUNTING AND NUMBER OF FIXTURES PER POLE

CALCULATION SUMMARY

LABEL	UNITS	AVG	MAX	MIN	AVG/MIN	MAX/MIN
LANDSCAPE PATH	FC	1.22	4	0.1	12.2	40
LANDSCAPE RAMP	FC	1.01	2.5	0.3	3.37	8.33
LANDSCAPE STEPS	FC	0.96	1.8	0.5	1.92	3.6
PARKING	FC	2.03	4.8	0.8	2.54	6
PATH 1	FC	2.58	3.9	1.1	2.35	3.55
PATH 2	FC	1.92	3.4	0.8	2.4	4.25
PATH 3	FC	1.99	3.8	0.9	2.21	4.22
PATH 4	FC	1.67	3.3	1.1	1.52	3
PATH 5	FC	1.95	3	0.9	2.17	3.33
PATH 6	FC	2.21	5.1	0.5	4.42	10.2
PATH 7	FC	2.08	3.7	0.7	2.97	5.29
PROP LINE TRACT 2	FC	0.27	0.9	0	N.A.	N.A.
PROP LINE TRACT G	FC	0.06	0.9	0	N.A.	N.A.
POOL DECK	FC	14.58	22	10.3	1.42	2.14

1 SITE PHOTOMETRIC PLAN
SCALE: 1" = 70'-0"

PROJECT NUMBER
65120950

DRAWN BY
TV

DATE
08/12/2022



PREPARED FOR CENTURY COMMUNITIES



PROJECT
COMPARK VILLAGE SOUTH

TOWN OF PARKER, COUNTY OF DOUGLAS, COLORADO 80134

SHEET TITLE
SITE PHOTOMETRIC PLAN & SCHEDULES

SHEET NUMBER
64

COMPARK VILLAGE SOUTH
F1 AMD 2 - MULTIFAMILY
SITE PLAN

LOT 1, COMPARK VILLAGE FILING NO. 1, AMEND NO. 2
SOUTH HALF SECTION 6, TOWNSHIP 6 SOUTH, RANGE 66 WEST OF THE 6TH PRINCIPAL MERIDIAN
TOWN OF PARKER, COUNTY OF DOUGLAS, STATE OF COLORADO



GARDCO
by **signify**

Site & Area
EcoForm
ECF-S small area light

Gardco EcoForm Gen-2 combines economy with performance in an LED area luminaire. Capable of delivering up to 27,800 lumens or more in a compact, low profile LED luminaire, EcoForm offers a new level of customer value. EcoForm features an innovative retrofit arm kit, simplifying site conversions to LED by eliminating the need to drill additional holes in most existing poles. Integral control systems available for further energy savings. Includes Service Tag, our innovative way to provide assistance throughout the life of the product.

Project: _____
Location: _____
Cat.No: _____
Type: _____
Lamp: _____ Qty: _____
Notes: _____

Ordering guide example: ECF-S-64L-90-NW-G2-AR-5-120-HIS-MGY

Units	Number of LEDs	Drive Current	LED Color - Generation	Mounting	Orientation	Voltage
ECF-S						
ECF-S EcoForm site and area, small	32L 32 LEDs (2 modules)	366 365mA 700 700mA 1A 1000mA 1.2A 1200mA	WW-G2 Warm White 3000K, 70CRI Generation 2 NW-G2 Neutral White 4000K, 70CRI Generation 2 CW-G2 Cool White 5000K, 70CRI Generation 2	AM* Arm Mount (standard) The following mounting kits must be ordered separately (See accessories) SP* Slip Fitter Mount (fits 2 1/2" O.D. tenon) WS Wall mount with surface conduit rear entry permitted RAM Retrofit arm mount kit	Type 2 2-90 Rotated left 90° 2-270 Rotated right 270° Type 3 3-90 Rotated left 90° 3-270 Rotated right 270° Type 4 4-90 Rotated left 90° 4-270 Rotated right 270° Type 5 5-90 Type 5 5-270 Type 5W	120 120V 208 208V 240 240V 277 277V 347 347V 480 480V UNV 120-277V (50/60Hz) HW 140-480V (50/60Hz)
	48L 48 LEDs (3 modules)	900 900mA 1A 1000mA 1.2A 1200mA				
	64L 64 LEDs (4 modules)	900 900mA 1A 1000mA 1.2A 1200mA				

Accessories	Accessories	Accessories	Accessories	Accessories	Accessories
DD* 0-10V External dimming (for controls by others) DCC** Dual Circuit Control FAWS*** Field Adjustable Wattage Selector LIC**** Integral wireless module BL**** Bi-level functionality SRD**** SR driver connected to Zhaga socket	IMRS** Integral with #3 lens IMRS** Integral with #7 lens	FCB** Photocell TLRD5** Twist Lock Receptacle TLRD7** 5 Pin Twist Lock Receptacle TLRPO** Twist Lock Receptacle w/ Protocol	Fusing FP* Single (100, 277, 347VAC) FP2* Double (208, 240, 480VAC) Pole Mount Fusing FPF* Single (100, 277, 347VAC) FPF2* Double (208, 240, 480VAC) FPF3* Canadian Double Pole (208, 240, 480VAC) SP2* Surge Protection (ULCA standard)	Square Pole Adapter Included in standard product TB* Terminal Block RPA* Round Pole Adapter (fits to 3" - 3 1/2" O.D. pole) HIS** Internal House Side Shield CC Custom color (Must supply color chip for required factory quote)	Textured BK White BR Bronze BZ Dark Gray MGY Medium Gray Customer specified RAL Specify optional color or RAL (see RAL7014) CC Custom color (Must supply color chip for required factory quote)

- BL-IMRS7 equipped with out-boarded sensor housing when voltage is 140V (247-480V)
- Mounts to a 4" round pole with adapter included for square poles.
- Limited to a maximum of 45 degrees aiming above horizontal.
- Not available with other dimming control options.
- Not available with motion sensor.
- Not available with photocell.
- Must specify motion sensor lens.
- Not available in 347 or 480V.
- Must specify input voltage.
- BL-IMRS7 equipped with out-boarded sensor housing when voltage is 140V (247-480V)
- Not available with other dimming control options.
- Not available with motion sensor.
- Not available with photocell.
- Must specify motion sensor lens.
- Not available in 347 or 480V.
- Must specify input voltage.



ECF-S EcoForm small
Area luminaire

EcoForm Accessories²¹ (ordered separately, field installed)

Shading Accessories

House Side shield

Standard optic orientation:
HIS-32-H²⁰ Internal House Side Shield for 32 LEDs (2 modules)
HIS-48-H²⁰ Internal House Side Shield for 48 LEDs (3 modules)
HIS-64-H²⁰ Internal House Side Shield for 64 LEDs (4 modules)

Optic at 90 or 270 orientation:
HIS-32-V²⁰ Internal House Side Shield for 32 LEDs (2 modules)
HIS-48-V²⁰ Internal House Side Shield for 48 LEDs (3 modules)
HIS-64-V²⁰ Internal House Side Shield for 64 LEDs (4 modules)

Luminaire Accessories

Footnotes
20. Not available with Type 5 or 5W optics
21. Consult Signify to confirm whether specific accessories are BAA-compliant.

Accessories	Accessories	Accessories
ECF-BD-G2 Bird deterrent ECF-RAM-G2-FF Patrol Arm mount kit ECF-SF-G2-FF Slip Fitter Mount (fits to 2 3/8" O.D. tenon) ECF-HS-G2-FF Wall mount with surface conduit rear entry permitted	EcoForm PTF2 (pole top fitter fits 23.8-21.2" OD x 4" depth tenon) PTF2-ECF-S/L-1-90-FF 1 luminaire at 90° PTF2-ECF-S/L-2-90-FF 2 luminaires at 90° PTF2-ECF-S/L-2-180-FF 2 luminaires at 180° PTF2-ECF-S/L-3-90-FF 3 luminaires at 90° PTF2-ECF-S/L-4-90-FF 4 luminaires at 90° PTF2-ECF-S/L-3-120-FF 3 luminaires at 120° FF) - Specify finish	EcoForm PTF3 (pole top fitter fits 3-31/2" OD x 6" depth tenon) PTF3-ECF-S/L-1-90-FF 1 luminaire at 90° PTF3-ECF-S/L-2-90-FF 2 luminaires at 90° PTF3-ECF-S/L-2-180-FF 2 luminaires at 180° PTF3-ECF-S/L-3-90-FF 3 luminaires at 90° PTF3-ECF-S/L-4-90-FF 4 luminaires at 90° PTF3-ECF-S/L-3-120-FF 3 luminaires at 120° EcoForm PTF4 (pole top fitter fits 31-2" OD x 6" depth tenon) PTF4-ECF-S/L-1-90-FF 1 luminaire at 90° PTF4-ECF-S/L-2-90-FF 2 luminaires at 90° PTF4-ECF-S/L-2-180-FF 2 luminaires at 180° PTF4-ECF-S/L-3-90-FF 3 luminaires at 90° PTF4-ECF-S/L-4-90-FF 4 luminaires at 90° PTF4-ECF-S/L-3-120-FF 3 luminaires at 120°

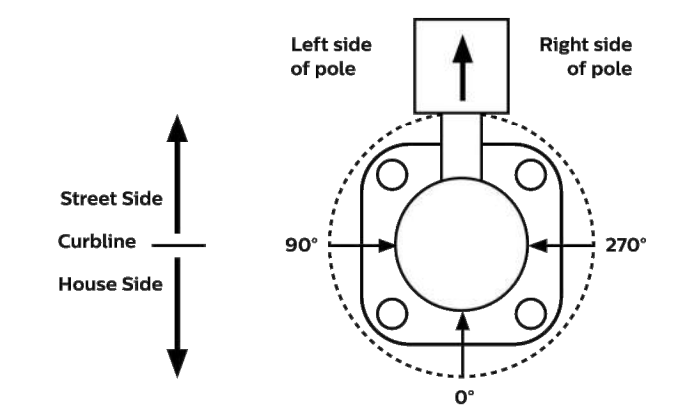
Ready to Go configurations (when ordered with the "RS-" catalog code, the following configurations will ship in 2 weeks):

Catalog Number	12NC	Catalog Number	12NC
RS-ECF-S-32L-1A-NW-G2-AR-3-UNV-BZ	912401466002	RS-ECF-S-64L-1A-NW-G2-AR-3-UNV-BK	912401534560
RS-ECF-S-32L-1A-NW-G2-AR-3-UNV-MGY	912401466003	RS-ECF-S-64L-1A-NW-G2-AR-4-UNV-BZ	912401466016
RS-ECF-S-32L-1A-NW-G2-AR-3-UNV-BK	912401534554	RS-ECF-S-64L-1A-NW-G2-AR-4-UNV-MGY	912401466017
RS-ECF-S-32L-1A-NW-G2-AR-4-UNV-BK	912401466004	RS-ECF-S-64L-1A-NW-G2-AR-5-UNV-BZ	912401534561
RS-ECF-S-32L-1A-NW-G2-AR-4-UNV-MGY	912401466005	RS-ECF-S-64L-1A-NW-G2-AR-5-UNV-BK	912401466018
RS-ECF-S-32L-1A-NW-G2-AR-4-UNV-BK	912401534555	RS-ECF-S-64L-1A-NW-G2-AR-5-UNV-MGY	912401466019
RS-ECF-S-32L-1A-NW-G2-AR-5-UNV-BZ	912401466006	RS-ECF-S-64L-1A-NW-G2-AR-5-UNV-BK	912401534562
RS-ECF-S-32L-1A-NW-G2-AR-5-UNV-MGY	912401466007	RS-ECF-RAM-G2-DGY	912401466487
RS-ECF-S-32L-1A-NW-G2-AR-5-UNV-BK	912401534556	RS-ECF-RAM-G2-MGY	912401466488
RS-ECF-S-48L-1A-NW-G2-AR-3-UNV-BZ	912401466008	RS-ECF-RAM-G2-WH	912401466489
RS-ECF-S-48L-1A-NW-G2-AR-3-UNV-MGY	912401466009	RS-HIS-32-H	912401466491
RS-ECF-S-48L-1A-NW-G2-AR-3-UNV-BK	912401534557	RS-HIS-48-H	912401466491
RS-ECF-S-48L-1A-NW-G2-AR-4-UNV-BZ	912401466010	RS-HIS-64-H	912401466493
RS-ECF-S-48L-1A-NW-G2-AR-4-UNV-MGY	912401466011		
RS-ECF-S-48L-1A-NW-G2-AR-4-UNV-BK	912401534558		
RS-ECF-S-48L-1A-NW-G2-AR-5-UNV-BZ	912401466012		
RS-ECF-S-48L-1A-NW-G2-AR-5-UNV-MGY	912401466013		
RS-ECF-S-48L-1A-NW-G2-AR-5-UNV-BK	912401534559		
RS-ECF-S-64L-1A-NW-G2-AR-3-UNV-BZ	912401466014		
RS-ECF-S-64L-1A-NW-G2-AR-3-UNV-MGY	912401466015		

ECF-S EcoForm small
Area luminaire

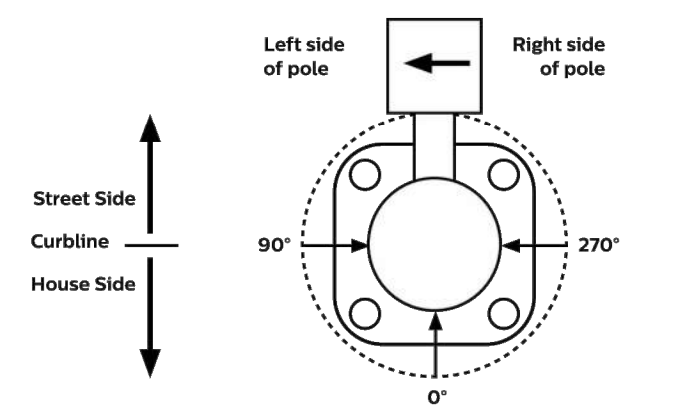
Optical Orientation Information

Standard Optic Position
Luminaires ordered with asymmetric optical systems in the standard optic position will have the optical system oriented as shown below:



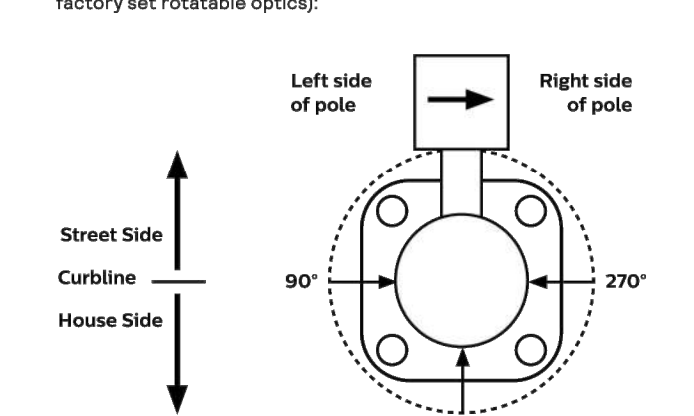
Note: The hand hole will normally be located on the pole at the 0° point.

Optic Rotated Left (90°) Optic Position
Luminaires ordered with optical systems in the Optic Rotated Left (90°) optic position will have the optical system oriented as shown below (Type 5 and 5W optics are not available with factory set rotatable optics):



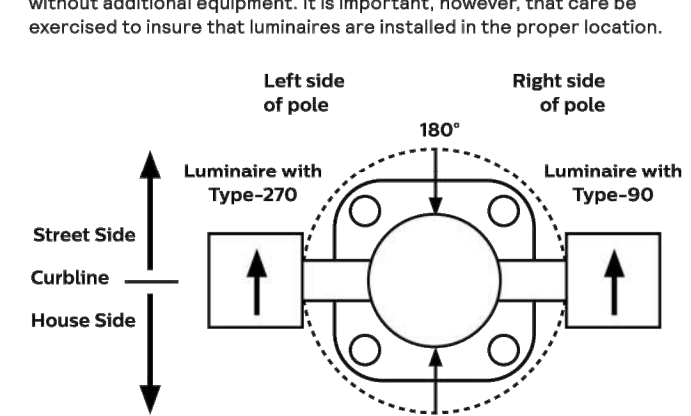
Note: The hand hole will normally be located on the pole at the 0° point.

Optic Rotated Right (270°) Optic Position
Luminaires ordered with optical systems in the Optic Rotated Right (270°) optic position will have the optical system oriented as shown below (Type 5 and 5W optics are not available with factory set rotatable optics):



Note: The hand hole will normally be located on the pole at the 0° point.

Twin Luminaire Assemblies with Type-90/Type-270 Rotated Optical Systems
Twin luminaire assemblies installed with rotated optical systems are an excellent way to direct light toward the interior of the site (Street Side) without additional equipment. It is important, however, that care be exercised to insure that luminaires are installed in the proper location.



Note: The hand hole location will depend on the drilling configuration ordered for the pole.

PROJECT NUMBER
65120950

DRAWN BY
TV

DATE
08/12/2022



PREPARED FOR CENTURY COMMUNITIES



PROJECT
COMPARK VILLAGE SOUTH

TOWN OF PARKER, COUNTY OF DOUGLAS, COLORADO 80134

SHEET TITLE
LIGHT FIXTURE SPEC SHEETS

SHEET NUMBER
65

SITE LIGHT FIXTURE 'SA1, SA2, SA3, SA4, & SC'

COMPARK VILLAGE SOUTH
F1 AMD 2 - MULTIFAMILY
SITE PLAN

LOT 1, COMPARK VILLAGE FILING NO. 1, AMEND NO. 2
SOUTH HALF SECTION 6, TOWNSHIP 6 SOUTH, RANGE 66 WEST OF THE 6TH PRINCIPAL MERIDIAN
TOWN OF PARKER, COUNTY OF DOUGLAS, STATE OF COLORADO

PROJECT NUMBER
65120950
DRAWN BY
TV
DATE
08/12/2022



Gardco PureForm LED area small round comfort P20 features a sleek, low profile design. Comfort optics are designed to enhance visual comfort by reducing glare and are ideally suited for pedestrian scale applications. Multiple optical distributions and color temperatures are available to allow you to customize your selection.

Project: _____
Location: _____
Cat.No: _____
Type: _____
Lumens: _____ City: _____
Notes: _____

Profile	Optic Technology	Configurable (total lumens)	Color Temperature	Distribution	Mounting	Voltage
P20	C					
P20	PureForm area small, 20" round	A01 2,000 lumens A02 4,000 lumens A03 6,000 lumens A04 8,000 lumens A06 10,000 lumens A08 12,000 lumens A07 14,000 lumens A09 16,000 lumens	A30 80CRI 3000K A40 80CRI 4000K A50 70CRI 5000K	T15 Type 1 Short T25 Type 2 Short T45 Type 4 Short TCD Type 4 Concentrated Downlight T55 Type 5 Short	ARP Arm mount (Standard) RAN Retrofit arm mount kit WAL Wall mount	120 120V 208 208V 240 240V 277 277V 347 347V 480 480V UNV 120-277V (60/60Hz) HVV 347-480V (50/60Hz)

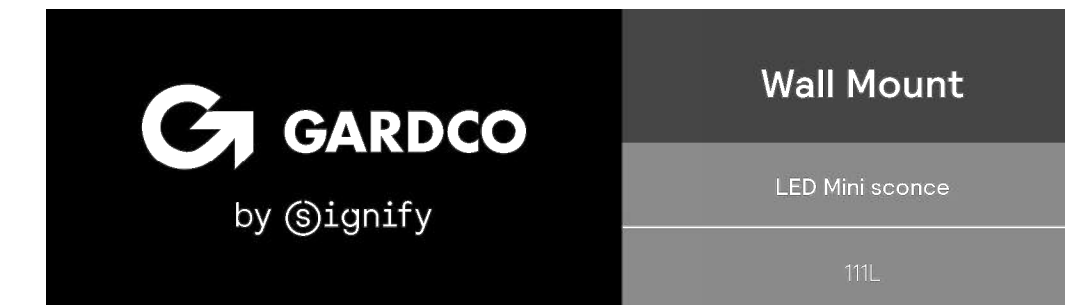
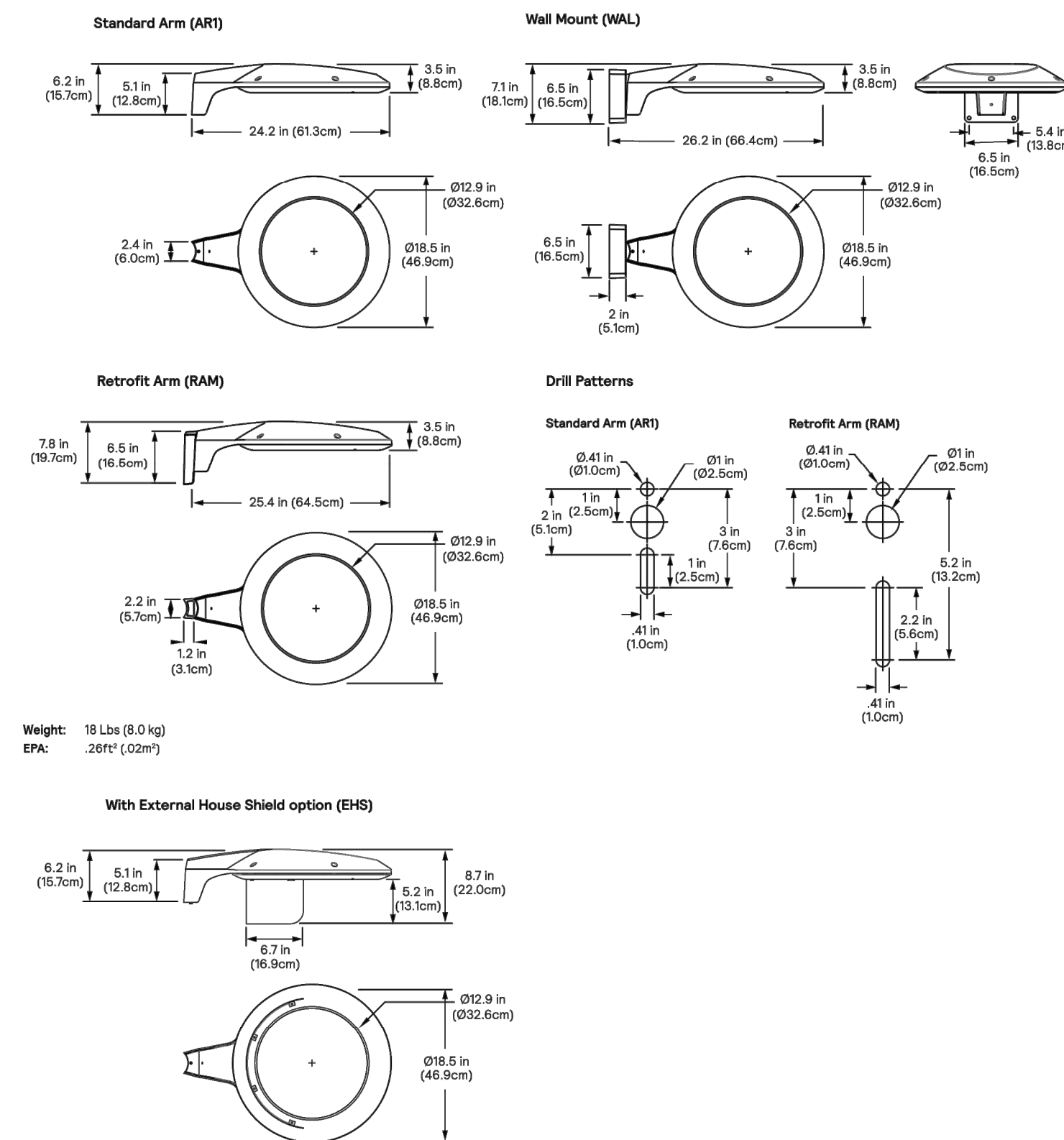
Options	Mounting	Electrical/Dimming	Finish
(0-10V dimming driver standard) DLEA Dimming Leads Externally Accessible (controls by others) FAWS Field Adjustable Wattage Selector BL30 Bi-level set at 30% dimming SIR4 SR driver connected to Zigbee SRDR SR driver connected to Zigbee DataDimmer Automatic Profile Dimming CS60 Security 50% Dimming, 7 hours CM50 Median 50% Dimming, 8 hours CS30 Security 30% Dimming, 7 hours CM30 Median 30% Dimming, 8 hours	L2 FIR Sensor #2 lens L3 FIR Sensor #3 lens MW Microwave HF Sensor	PCB Photocontrol Button TR7 7-pin Twist Lock Receptacle TL7 7-pin Twist Lock Receptacle w/ 3-pin Photocontrol SP2 Increased 20A FB1 Single Fuse (220, 277, 347VAC) FB2 Double Fuse (208, 240, 480VAC) The following option must be ordered separately (See accessories) EHS External house side shield	EMAXX Emergency battery pack Textured BK Black WH White BZ Bronze DG Dark Gray MG Medium Gray Customer specified RAL Specify optional color or RAL (see RAL7024) CC Custom color (Must supply color chip for required factory quote)

- Only available with symmetrical optics (T15 and T55).
- Extended lead times apply. Contact factory for details.
- Mounts to a 4"-5" OD round pole with adapter included for square poles.
- Not available with other dimming control options (mutually exclusive).
- Not available with motion sensor.
- BL30 must be specified with a motion sensor lens (L2 or L3).
- BL30 must be specified with Microwave HF Sensor (MW).
- Not available with photocontrol.
- Not available in 347 or 480V.
- Available only in 120 or 277V.
- Must specify input voltage.
- All 7 pins in NEMA receptacle are connected to SR driver.
- Not available in 480V. Order photocontrol separately with TR7.
- Not available with DLEA and FAWS dimming control options.
- Not available with DLEA, SRDR, FAWS, CS50, CM50, CS30, and CM30 dimming control options.
- Product ships standard with 10A.
- Only available with A01 and A03.
- Only available in 120/277/347V.
- When ordering SRDR with L2 or L3, controller to be used on socket must be SR compatible (See specifications for more details).



P20 PureForm LED small round
Area light with comfort optics

Dimensions



Philips Gardco 111 LED mini sconce luminaires are compact in size, perfect for low mounting height wall mount applications. T11 LED luminaires are designed to integrate naturally to wall surfaces. T11 LED luminaires are available with three (3) different distribution patterns, providing full cutoff performance (in the normal downlight position) and featuring LED arrays. Luminaires provide performance excellence and advanced Philips Gardco LED thermal management technology. High performance Class 1 LED systems offer potential energy savings of 50 % or more compared to HID systems. T11 LED luminaires are also available with 0-10V Dimming.



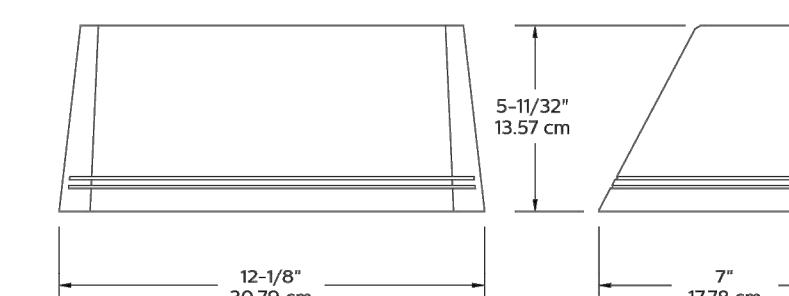
Project: _____
Location: _____
Cat.No: _____
Type: _____
Lamp: _____ City: _____
Notes: _____

Ordering guide

Profile	No. of LEDs	Drive Current	Color / Generation	Distribution	Voltage	Options	Electrical/Luminaire	Finish
T11L	16							
T11L Triaxial Wedge LED	HL 16 LED module	350 350mA 550 550mA 750 750mA	CW-G2 Cool White 5700K, 70 CRI generation 2 NW-G2 Neutral White 4000K, 70 CRI generation 2 WW-G2 Warm White 3000K, 70 CRI generation 2	2 Type II Wide Throw Optic, with maximized lateral throw 3 Type II Preferred Wide Throw Optic with improved forward throw 4 Type IV Maximized forward throw optic	UNV 120-277V 50Hz/60Hz 120 120V 208 208V 240 240V 277 277V	PCB Photocontrol Button DD 0-10V Dimming	F1 Single fusing (30, 277VAC) F2 Double fusing (208, 240VAC) F3 Canadian double pull fusing (208, 240VAC) DL Diffusing Lens WS Wall Mounted Box for Surface Conduit	Textured BK Black WH White BZ Bronze DG Dark Gray MG Medium Gray Customer specified RAL Specify optional color or RAL (see RAL7024) CC Custom color (must supply color chip for required factory quote)

- Provide specific input voltage.

Dimensions



Note: Mounting plate center is located in the center of the luminaire width and 2.38" (6.03cm) above the luminaire bottom (lens down position). Splices must be made in the J-box (by others). Mounting plate must be secured by max. 1/4" (6.4mm) diameter bolts (by others) structurally to the wall.



PREPARED FOR CENTURY COMMUNITIES



PROJECT

COMPARK VILLAGE SOUTH

TOWN OF PARKER, COUNTY OF DOUGLAS, COLORADO 80134

SHEET TITLE
LIGHT FIXTURE SPEC SHEETS

SHEET NUMBER
66

SITE LIGHT FIXTURE 'SB'

SITE LIGHT FIXTURE 'SB'

SITE LIGHT FIXTURE 'SD'

**COMPARK VILLAGE SOUTH
F1 AMD 2 - MULTIFAMILY
SITE PLAN**

LOT 1, COMPARK VILLAGE FILING NO. 1, AMEND NO. 2
SOUTH HALF SECTION 6, TOWNSHIP 6 SOUTH, RANGE 66 WEST OF THE 6TH PRINCIPAL MERIDIAN
TOWN OF PARKER, COUNTY OF DOUGLAS, STATE OF COLORADO



ML4: 4' PRO BEACH NET

SIZE: 39"H X 30"W
NET COLOR: WHITE
OPTIONS: STANDARD TOP & BOTTOM LINES, STANDARD SIDE TENSION

NOTE:
INSTALL PER MANUFACTURER'S SPECS.

SUPPLIER: VOLLEYBALL USA
WEBSITE: VOLLEYBALLUSA.COM



UV-5000 OUTDOOR ALUMINUM POLES OR APPROVED EQUAL

SIZE: 10'6"H

NOTE:
INSTALL PER MANUFACTURER'S SPECS.

SUPPLIER: VOLLEYBALL USA
WEBSITE: VOLLEYBALLUSA.COM



RUBBER VOLLEYBALL CURB OR APPROVED EQUAL

SIZE: 6"W X 6"H X 72"L SECTIONS
TOTAL LF: 148'
MATERIAL: RUBBER
COLOR: BLACK

NOTE:
INSTALL PER MANUFACTURER'S SPECS.

SUPPLIER: VOLLEYBALL USA
WEBSITE: VOLLEYBALLUSA.COM

1 VOLLEYBALL NETS
Scale: NTS

2 VOLLEYBALL POLLS
Scale: NTS

3 VOLLEYBALL RUBBER CURB
Scale: NTS



2 INCH PRO ADJUSTABLE BOUNDARY LINES OR APPROVED EQUAL

COLOR: BLACK

NOTE:
INSTALL PER MANUFACTURER'S SPECS

SUPPLIER: VOLLEYBALL USA
WEBSITE: VOLLEYBALLUSA.COM



CUSTOM SIGN PLAQUE

COLOR: ALUMINUM EDGE
STAND: 4X4 CEDAR POST

NOTES:
SIGN PLAQUE DESIGN, ILLUSTRATIVE/ INFORMATION AND MATERIALS TO BE COMPLETED BY OTHERS



MODEL: KEYSTONE COMPAC OR APPROVED EQUAL

STYLE: REGENCY
COLOR: BROWN

NOTE:

- INSTALL PER MANUFACTURER'S INSTRUCTIONS
- STRUCTURAL ENGINEER TO PROVIDE STRUCTURAL DETAILING AND TO STAMP DRAWINGS.
- SEE CIVIL DRAWINGS FOR INFORMATION ON RAILING AND SLEEVE IT RAILING SYSTEM

SUPPLIER: KEYSTONE
WEBSITE: KEYSTONEWALLS.COM

4 VOLLEYBALL BOUNDARIES
Scale: NTS

5 SIGN PLAQUE
Scale: NTS

6 RETAINING WALL
Scale: NTS

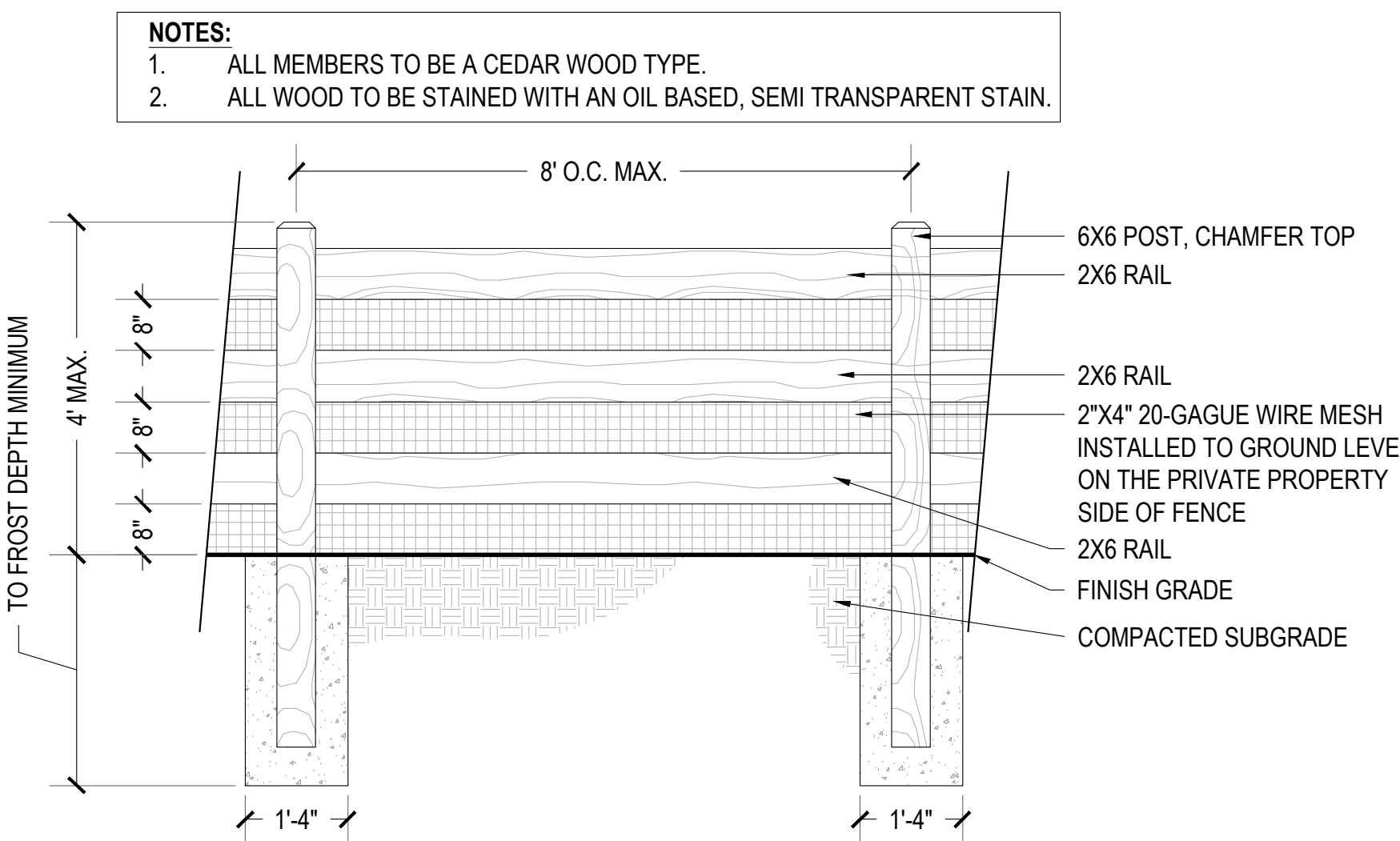


DECORATIVE CONCRETE
COLOR: TBD
SAW CUT JOINTS
INSTALL PER MANUFACTURER'S SPECS. OR APPROVED EQUAL.



CUSTOM MONUMENT SIGN MATERIALS TO MATCH ARCHITECTURE

*MONUMENT IMAGES ARE FOR CONCEPTUAL REFERENCE ONLY. MONUMENT SIGN TO BE APPROVED THROUGH SEPARATE SIGN SUBMITTAL PROCESS. SHOP DRAWINGS TO BE SUBMITTED BY CONTRACTOR FOR CONSTRUCTION. COMMUNITY NAME IS CONCEPTUAL AND HAS NOT BEEN DETERMINED AT THIS POINT IN TIME.



7 DECORATIVE PAVING
Scale: NTS

8 MONUMENT SIGN
Scale: NTS

9 3-RAIL FENCE
Scale: NTS

PROJECT NUMBER
65120950

DRAWN BY
AML/ MLH

DATE
09/02/2022



PREPARED FOR CENTURY COMMUNITIES



PROJECT
COMPARK VILLAGE SOUTH

TOWN OF PARKER, COUNTY OF DOUGLAS, COLORADO 80134

SHEET TITLE

SITE DETAILS

SHEET NUMBER

COMPARK VILLAGE SOUTH
F1 AMD 2 - MULTIFAMILY
SITE PLAN
LOT 1, COMPARK VILLAGE FILING NO. 1, AMEND NO. 2
SOUTH HALF SECTION 6, TOWNSHIP 6 SOUTH, RANGE 66 WEST OF THE 6TH PRINCIPAL MERIDIAN
TOWN OF PARKER, COUNTY OF DOUGLAS, STATE OF COLORADO

PROJECT NUMBER
210512
DRAWN BY
DATE
06/01/2022



Architecture + Planning
820 16th Street, Suite 500
Denver, CO 80202
303.825.6400
ktgy.com



PREPARED FOR CENTURY
COMMUNITIES



PROJECT

COMPARK
VILLAGE
SOUTH

TOWN OF PARKER, COUNTY
OF DOUGLAS, COLORADO
80134

SHEET TITLE

COVER
SHEET

ARCHITECTURAL EXHIBITS

SHEET NUMBER
36

COMPARK VILLAGE SOUTH
F1 AMD 2 - MULTIFAMILY
SITE PLAN

LOT 1, COMPARK VILLAGE FILING NO. 1, AMEND NO. 2
SOUTH HALF SECTION 6, TOWNSHIP 6 SOUTH, RANGE 66 WEST OF THE 6TH PRINCIPAL MERIDIAN
TOWN OF PARKER, COUNTY OF DOUGLAS, STATE OF COLORADO

Building Type A - 24 Plex							
Unit Type	Units per level	Units per bldg	Bedrooms	*NRSF area	No. of bldg	Total units	Total area
P0-1/1A	1	3	1	540		6	3240
P1-2/1D	1	3	1	800		6	4800
P1-3/1E	1	3	1	735		6	4410
P2-1/2B	1	3	2	1060		6	6360
P2-3/2D	(Level 1)	1	2	1125		2	2250
P2-4/2F	2	6	2	1125		12	13500
P3-0/3A	(Level 1)	1	3	1300		10	13000
	(Level 2/3)	2					
Total	8	24			2	48	47,560

Building Type B - 36 Plex							
Unit Type	Units per level	Units per bldg	Bedrooms	*NRSF area	No. of bldg	Total units	Total area
P1-2/1D	1	3	1	800		6	4800
P1-3/1E	3	9	1	735		18	13230
P1-5/1G	1	3	1	980		6	5880
P1-7/1J	1	3	1	790		6	4740
P1-8/1K	(Level 1)	1	1	750		2	1500
P2-0/2A	1	3	2	1050		6	6300
P2-1/2B	(Level 1)	3	2	1060		22	23320
	(Level 2/3)	4					
P2-4/2F	1	3	2	1125		6	6750
Total	8	36			2	72	66,520

Building Type C - 24 Plex							
Unit Type	Units per level	Units per bldg	Bedrooms	*NRSF area	No. of bldg	Total units	Total area
P0-1/1A	1	3	1	540		9	4860
P1-0/1B	1	3	1	790		9	7110
P1-2/1D	1	3	1	800		9	7200
P1-3/1E	2	6	1	735		18	13230
P2-1/2B	1	3	2	1060		9	9540
P2-2/2C	1	3	2	1225		9	11025
P2-7/2J	(Level 1)	1	2	1220		3	3660
P3-1/3B	(Level 2/3)	1	3	1380		6	8280
Total	8	24			3	72	64,905

Building Type D - 36 Plex with mezzanine in center							
Unit Type	Units per level	Units per bldg	Bedrooms	*NRSF area	No. of bldg	Total units	Total area
P1-1/1C	1	3	1	830		9	7470
P1-2/1D	2	6	1	800		18	14400
P1-3/1E	1	3	1	735		9	6615
P1-4/1F	(Level 1/2)	2	4	870		12	10440
P1-6/1H	1	3	1	810		9	7290
P1-9/1L	(Level 3)	2	2	1170		6	7020
P2-0/2A	1	3	2	1050		9	9450
P2-1/2B	1	3	2	1060		9	9540
P2-5/2G	(Level 1/2)	2	2	1085		6	6510
P2-6/2H	(Level 3)	2	1	2 + Den		3	4275
P2-7/2J	(Level 1)	1	4	1220		12	14640
P3-1/3B	(Level 2/3)	1	2	1380		6	8280
Total	12	36			3	108	83,010

*NRSF = Net rentable square footage: To outside face of stud + 1" air gap; does not include balcony

Site Summary	
**Net Site Area	± 9.74 AC
Dwelling Units	300 DU
Net Density	31 DU/AC

**Net Site Area = Lot 1 area only, does not include Tract 1 + 2.

Plan Summary						
Plan	Beds	*NRSF area	Quantity	%	Total NRSF	Avg. NRSF
P0-1/1A	1	550	15	5.0%		
P1-0/1B	1	790	9	3.0%		
P1-1/1C	1	830	9	3.0%		
P1-2/1D	1	830	39	13.0%		
P1-3/1E	1	730	51	17.0%		
P1-4/1F	1	880	12	4.0%		
P1-5/1G	1	980	6	2.0%		
P1-6/1H	1	810	9	3.0%		
P1-7/1J	1	780	6	2.0%		
P1-8/1K	1+Den	770	2	0.7%		
P1-9/1L	1+Mezz	1195	6	2.0%		
P2-0/2A	2	1050	15	5.0%		
P2-1/2B	2	1080	46	15.3%		
P2-2/2C	2	1215	9	3.0%		
P2-3/2D	2	1150	2	0.7%		
P2-4/2E	2	1155	6	2.0%		
P2-5/2F	2	1105	12	4.0%		
P2-6/2G	2+Den	1460	6	2.0%		
P2-7/2H	2	1200	6	2.0%		
P2-8/2J	2	1140	12	4.0%		
P3-0/3A	3	1306	10	3.3%		
P3-1/3B	3	1400	12	4.0%		
Total			300	100%	265,825	886.1
Type			No. Units	Mix		
1 Bedroom Total			164	54.7%		
2 Bedroom Total			114	38.0%		
3 Bedroom Total			22	7.3%		
Total			300	100.0%		

*NRSF = Net rentable square footage: To outside face of stud + 1" air gap; does not include balcony

PROJECT NUMBER
210512

DRAWN BY

DATE
06/01/2022



Architecture + Planning
820 16th Street, Suite 500
Denver, CO 80202
303.825.6400
ktgy.com

PREPARED FOR CENTURY
COMMUNITIES



PROJECT

COMPARK
VILLAGE
SOUTH

TOWN OF PARKER, COUNTY
OF DOUGLAS, COLORADO
80134

SHEET TITLE

PROJECT
DATA

SHEET NUMBER

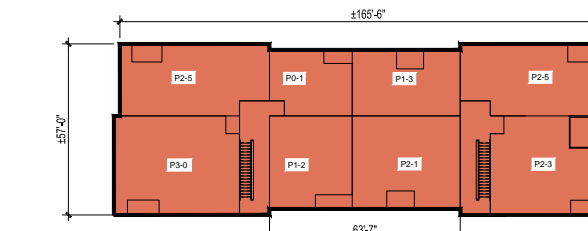
37

COMPARK VILLAGE SOUTH
F1 AMD 2 - MULTIFAMILY
SITE PLAN

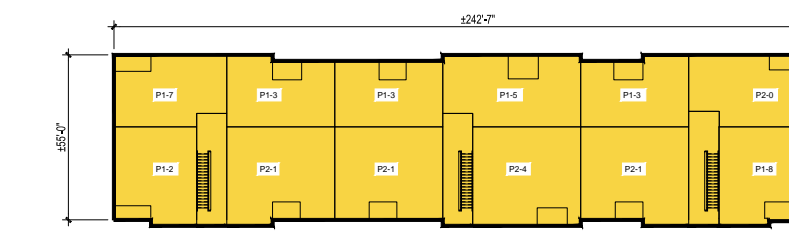
LOT 1, COMPARK VILLAGE FILING NO. 1, AMEND NO. 2
SOUTH HALF SECTION 6, TOWNSHIP 6 SOUTH, RANGE 66 WEST OF THE 6TH PRINCIPAL MERIDIAN
TOWN OF PARKER, COUNTY OF DOUGLAS, STATE OF COLORADO



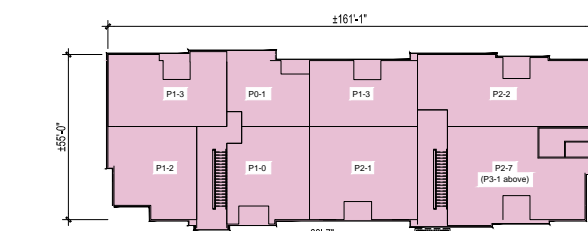
Building A - 24plex
(3-story)



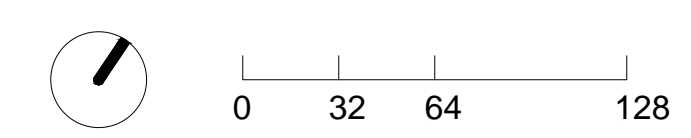
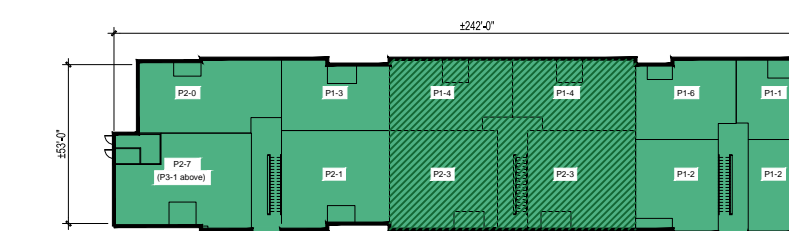
Building B - 36plex
(3-story)



Building C - 24plex w/ Wrap Porches
(3-story)



Building D - 36plex w/ Mezzanines
(3-Story Plus)



PROJECT NUMBER
210512

DRAWN BY

DATE
06/01/2022



PREPARED FOR CENTURY COMMUNITIES



PROJECT
COMPARK VILLAGE SOUTH

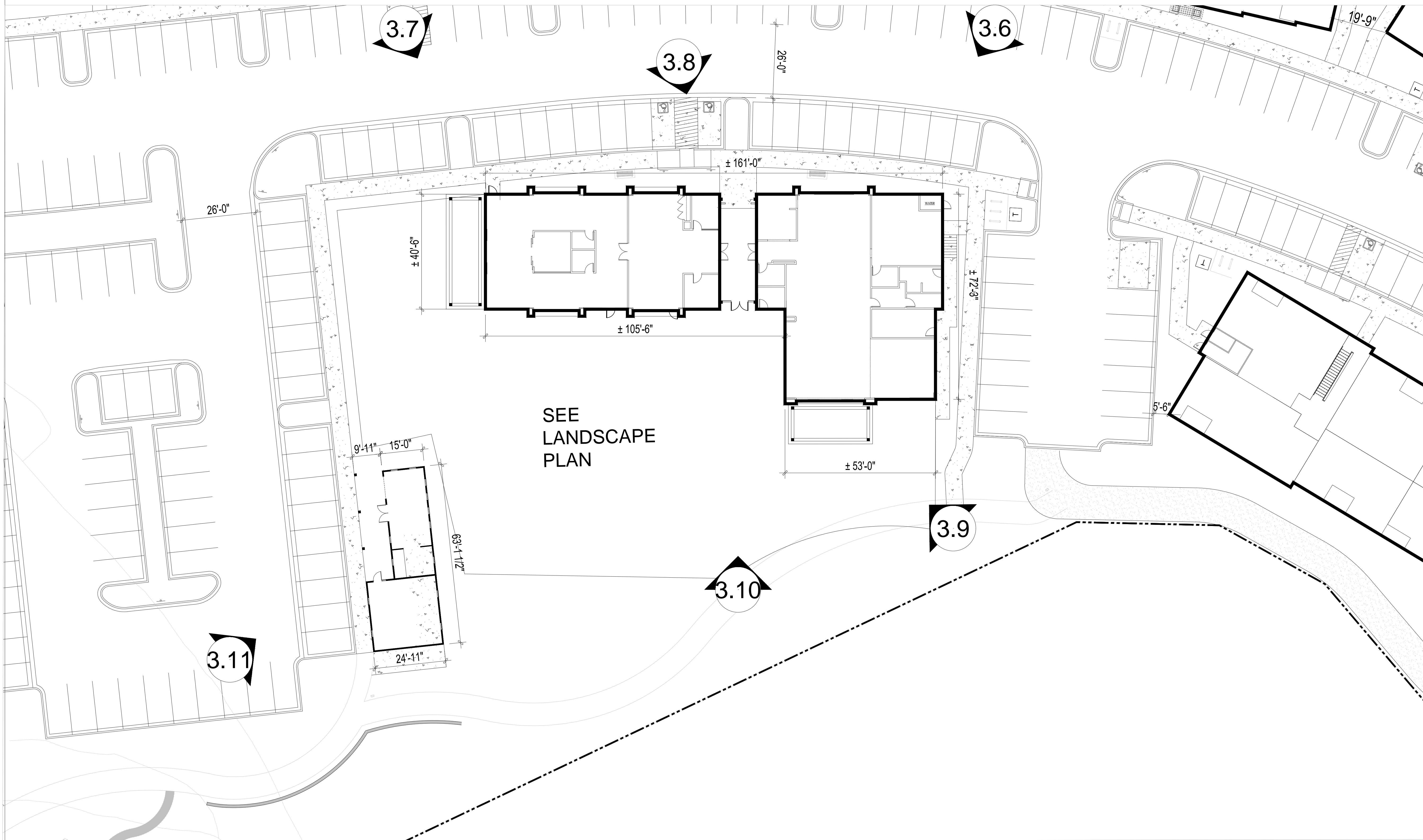
TOWN OF PARKER, COUNTY OF DOUGLAS, COLORADO 80134

SHEET TITLE
BUILDING KEY PLAN - GROUND LEVEL

SHEET NUMBER
38

COMPARK VILLAGE SOUTH
F1 AMD 2 - MULTIFAMILY
SITE PLAN

LOT 1, COMPARK VILLAGE FILING NO. 1, AMEND NO. 2
SOUTH HALF SECTION 6, TOWNSHIP 6 SOUTH, RANGE 66 WEST OF THE 6TH PRINCIPAL MERIDIAN
TOWN OF PARKER, COUNTY OF DOUGLAS, STATE OF COLORADO



PROJECT NUMBER
210512
DRAWN BY
DATE
06/01/2022



PREPARED FOR CENTURY
COMMUNITIES

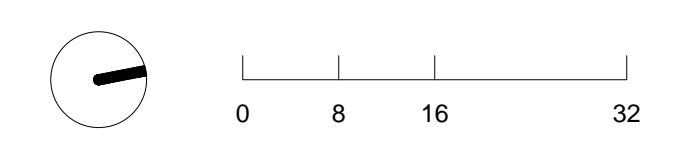


PROJECT
COMPARK
VILLAGE
SOUTH

TOWN OF PARKER, COUNTY
OF DOUGLAS, COLORADO
80134

SHEET TITLE
CLUBHOUSE
BUILDING PLAN

SHEET NUMBER
39



COMPARK VILLAGE SOUTH
F1 AMD 2 - MULTIFAMILY
SITE PLAN

LOT 1, COMPARK VILLAGE FILING NO. 1, AMEND NO. 2
SOUTH HALF SECTION 6, TOWNSHIP 6 SOUTH, RANGE 66 WEST OF THE 6TH PRINCIPAL MERIDIAN
TOWN OF PARKER, COUNTY OF DOUGLAS, STATE OF COLORADO

PROJECT NUMBER
210512

DRAWN BY

DATE
06/01/2022

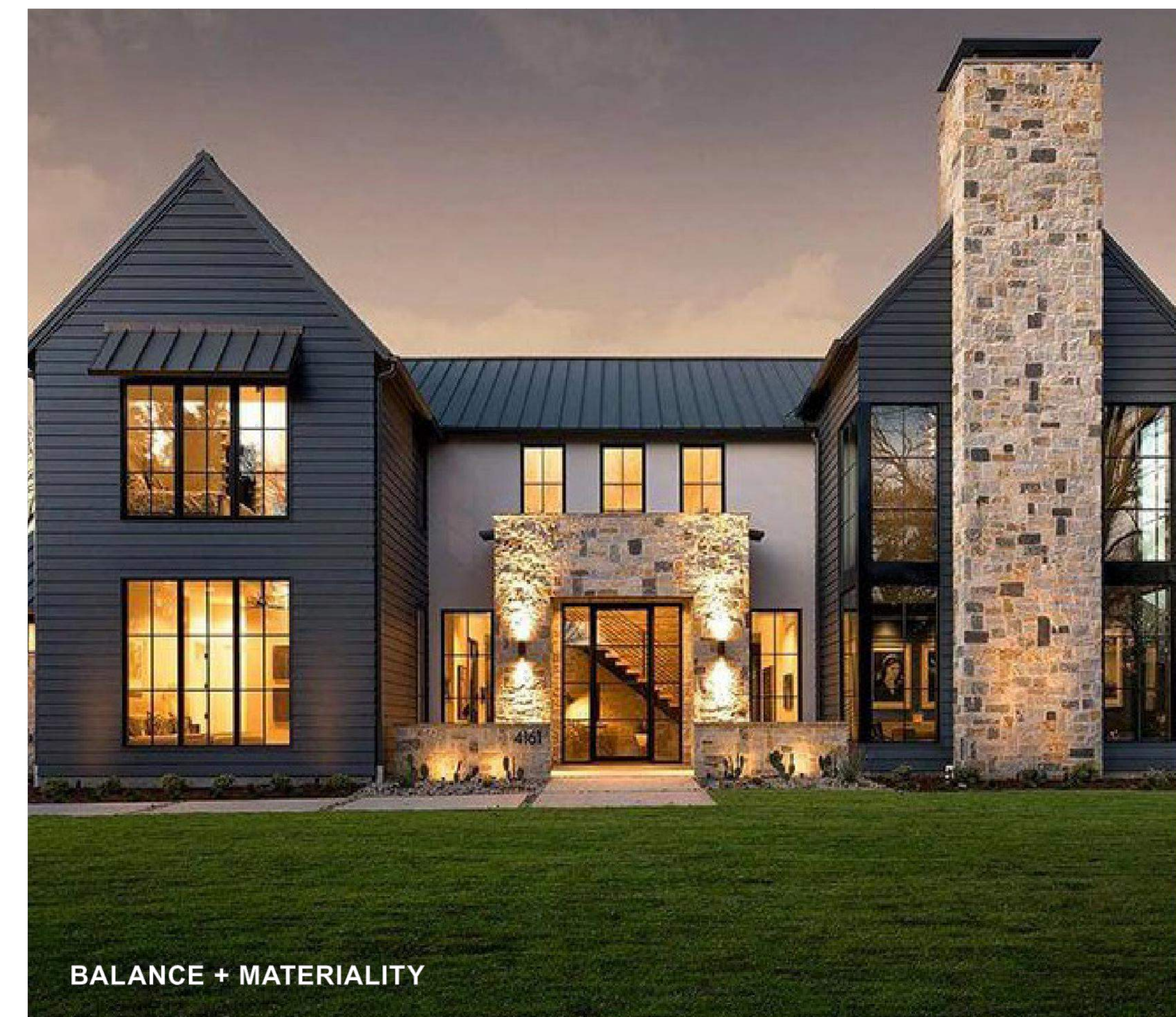
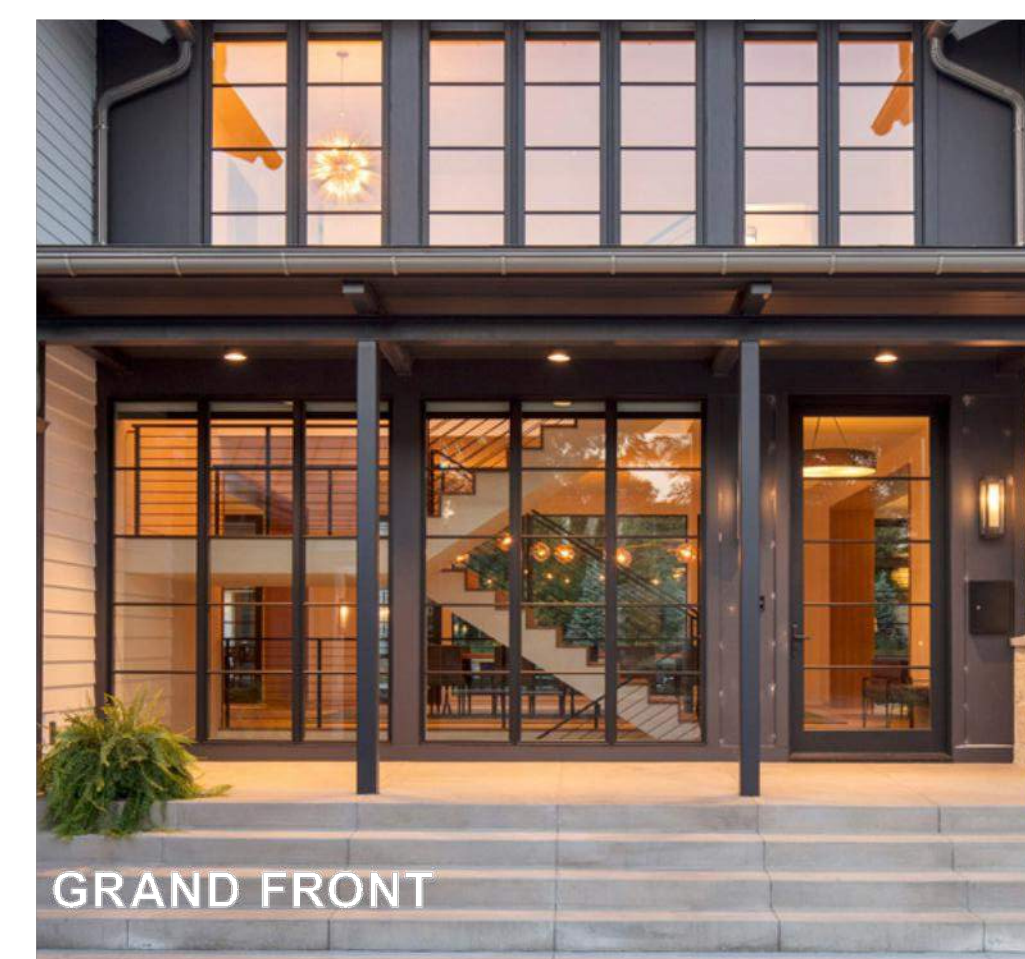
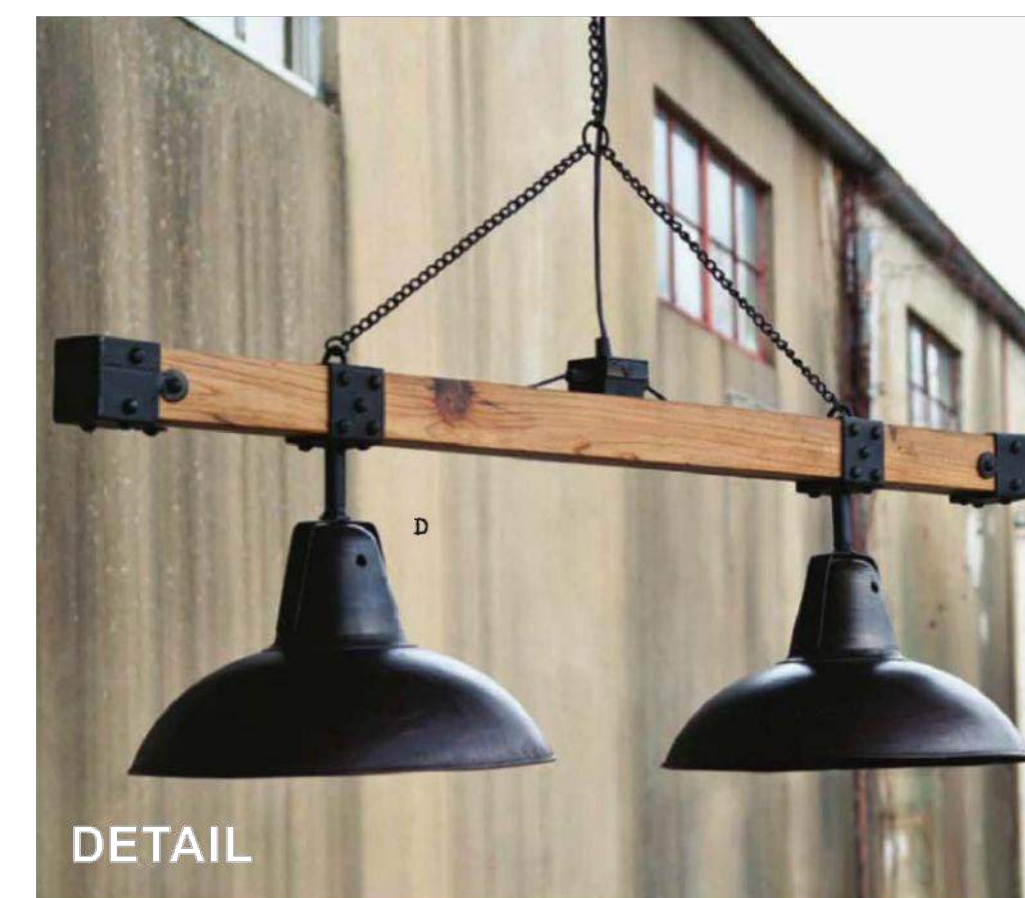
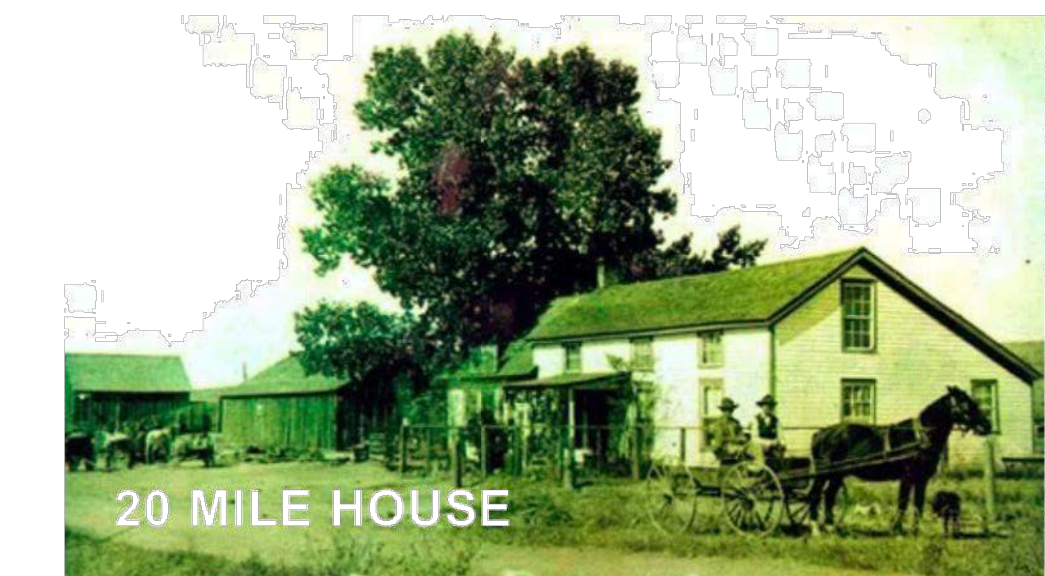


Architecture + Planning
820 16th Street, Suite 500
Denver, CO 80202
303.825.6400
ktgy.com

DESIGN APPROACH

Proposed is a balance of the past + future with a farmhouse modern style.

Refreshingly new, with hints to Parkers agricultural past of high pitched roofs, clean forms, and gridded windows. Rustic yet fresh, the buildings are envisioned to sit quaintly within the existing context.



PREPARED FOR CENTURY COMMUNITIES



PROJECT

COMPARK VILLAGE SOUTH

TOWN OF PARKER, COUNTY OF DOUGLAS, COLORADO 80134

SHEET TITLE
IMAGE BOARD

SHEET NUMBER
40

COMPARK VILLAGE SOUTH
F1 AMD 2 - MULTIFAMILY
SITE PLAN

LOT 1, COMPARK VILLAGE FILING NO. 1, AMEND NO. 2
SOUTH HALF SECTION 6, TOWNSHIP 6 SOUTH, RANGE 66 WEST OF THE 6TH PRINCIPAL MERIDIAN
TOWN OF PARKER, COUNTY OF DOUGLAS, STATE OF COLORADO

PROJECT NUMBER
210512

DRAWN BY

DATE
06/01/2022



Architecture + Planning
820 16th Street, Suite 500
Denver, CO 80202
303.825.6400
ktgy.com



PREPARED FOR CENTURY
COMMUNITIES



PROJECT

COMPARK
VILLAGE
SOUTH

TOWN OF PARKER, COUNTY
OF DOUGLAS, COLORADO
80134

SHEET TITLE
CONCEPTUAL
RENDERINGS

CLUBHOUSE AMENITY BUILDING

SHEET NUMBER
50

COMPARK VILLAGE SOUTH
F1 AMD 2 - MULTIFAMILY
SITE PLAN

LOT 1, COMPARK VILLAGE FILING NO. 1, AMEND NO. 2
SOUTH HALF SECTION 6, TOWNSHIP 6 SOUTH, RANGE 66 WEST OF THE 6TH PRINCIPAL MERIDIAN
TOWN OF PARKER, COUNTY OF DOUGLAS, STATE OF COLORADO

PROJECT NUMBER
210512

DRAWN BY

DATE
06/01/2022



Architecture + Planning
820 16th Street, Suite 500
Denver, CO 80202
303.825.6400
ktgy.com

PREPARED FOR CENTURY
COMMUNITIES



PROJECT

COMPARK
VILLAGE
SOUTH

TOWN OF PARKER, COUNTY
OF DOUGLAS, COLORADO
80134

SHEET TITLE
CONCEPTUAL
RENDERINGS

SHEET NUMBER

41



BUILDING # 8 PERSPECTIVE VIEW LOOKING NORTH
BUILDING TYPE A

COMPARK VILLAGE SOUTH
F1 AMD 2 - MULTIFAMILY
SITE PLAN

LOT 1, COMPARK VILLAGE FILING NO. 1, AMEND NO. 2
SOUTH HALF SECTION 6, TOWNSHIP 6 SOUTH, RANGE 66 WEST OF THE 6TH PRINCIPAL MERIDIAN
TOWN OF PARKER, COUNTY OF DOUGLAS, STATE OF COLORADO

PROJECT NUMBER
210512

DRAWN BY

DATE
06/01/2022



Architecture + Planning
820 16th Street, Suite 500
Denver, CO 80202
303.825.6400
ktgy.com



PREPARED FOR CENTURY
COMMUNITIES



PROJECT

COMPARK
VILLAGE
SOUTH

TOWN OF PARKER, COUNTY
OF DOUGLAS, COLORADO
80134

SHEET TITLE
CONCEPTUAL
RENDERINGS

SHEET NUMBER
42

BUILDING # 2 PERSPECTIVE VIEW LOOKING WEST
BUILDING TYPE B

COMPARK VILLAGE SOUTH
F1 AMD 2 - MULTIFAMILY
SITE PLAN

LOT 1, COMPARK VILLAGE FILING NO. 1, AMEND NO. 2
SOUTH HALF SECTION 6, TOWNSHIP 6 SOUTH, RANGE 66 WEST OF THE 6TH PRINCIPAL MERIDIAN
TOWN OF PARKER, COUNTY OF DOUGLAS, STATE OF COLORADO

PROJECT NUMBER
210512

DRAWN BY

DATE
06/01/2022



Architecture + Planning
820 16th Street, Suite 500
Denver, CO 80202
303.825.6400
ktgy.com



PREPARED FOR CENTURY
COMMUNITIES



PROJECT

COMPARK
VILLAGE
SOUTH

TOWN OF PARKER, COUNTY
OF DOUGLAS, COLORADO
80134

SHEET TITLE
CONCEPTUAL
RENDERINGS

BUILDING # 6 PERSPECTIVE VIEW LOOKING SOUTH
BUILDING TYPE C

SHEET NUMBER
43

COMPARK VILLAGE SOUTH
F1 AMD 2 - MULTIFAMILY
SITE PLAN

LOT 1, COMPARK VILLAGE FILING NO. 1, AMEND NO. 2
SOUTH HALF SECTION 6, TOWNSHIP 6 SOUTH, RANGE 66 WEST OF THE 6TH PRINCIPAL MERIDIAN
TOWN OF PARKER, COUNTY OF DOUGLAS, STATE OF COLORADO



BUILDING # 4 PERSPECTIVE VIEW LOOKING NORTH
BUILDING TYPE D

PROJECT NUMBER
210512

DRAWN BY

DATE
06/01/2022



Architecture + Planning
820 16th Street, Suite 500
Denver, CO 80202
303.825.6400
ktgy.com

PREPARED FOR CENTURY
COMMUNITIES



PROJECT

COMPARK
VILLAGE
SOUTH

TOWN OF PARKER, COUNTY
OF DOUGLAS, COLORADO
80134

SHEET TITLE
CONCEPTUAL
RENDERINGS

SHEET NUMBER

44

COMPARK VILLAGE SOUTH
F1 AMD 2 - MULTIFAMILY
SITE PLAN

LOT 1, COMPARK VILLAGE FILING NO. 1, AMEND NO. 2
SOUTH HALF SECTION 6, TOWNSHIP 6 SOUTH, RANGE 66 WEST OF THE 6TH PRINCIPAL MERIDIAN
TOWN OF PARKER, COUNTY OF DOUGLAS, STATE OF COLORADO

PROJECT NUMBER
210512

DRAWN BY

DATE
06/01/2022



Architecture + Planning
820 16th Street, Suite 500
Denver, CO 80202
303.825.6400
ktgy.com



PREPARED FOR CENTURY
COMMUNITIES



PROJECT

COMPARK
VILLAGE
SOUTH

TOWN OF PARKER, COUNTY
OF DOUGLAS, COLORADO
80134

SHEET TITLE
CONCEPTUAL
RENDERINGS

SHEET NUMBER
45

NORTHERN ENTRY LOOKING AT BUILDING # 4
BUILDING TYPE D

COMPARK VILLAGE SOUTH
F1 AMD 2 - MULTIFAMILY
SITE PLAN

LOT 1, COMPARK VILLAGE FILING NO. 1, AMEND NO. 2
SOUTH HALF SECTION 6, TOWNSHIP 6 SOUTH, RANGE 66 WEST OF THE 6TH PRINCIPAL MERIDIAN
TOWN OF PARKER, COUNTY OF DOUGLAS, STATE OF COLORADO

PROJECT NUMBER
210512

DRAWN BY

DATE
06/01/2022



Architecture + Planning
820 16th Street, Suite 500
Denver, CO 80202
303.825.6400
ktgy.com



PREPARED FOR CENTURY
COMMUNITIES



PROJECT

COMPARK
VILLAGE
SOUTH

TOWN OF PARKER, COUNTY
OF DOUGLAS, COLORADO
80134

SHEET TITLE
CONCEPTUAL
RENDERINGS

SHEET NUMBER

46

BUILDING # 10 PERSPECTIVE VIEW LOOKING SOUTH
BUILDING TYPE C

COMPARK VILLAGE SOUTH
F1 AMD 2 - MULTIFAMILY
SITE PLAN

LOT 1, COMPARK VILLAGE FILING NO. 1, AMEND NO. 2
SOUTH HALF SECTION 6, TOWNSHIP 6 SOUTH, RANGE 66 WEST OF THE 6TH PRINCIPAL MERIDIAN
TOWN OF PARKER, COUNTY OF DOUGLAS, STATE OF COLORADO

PROJECT NUMBER
210512

DRAWN BY

DATE
06/01/2022



Architecture + Planning
820 16th Street, Suite 500
Denver, CO 80202
303.825.6400
ktgy.com



PREPARED FOR CENTURY
COMMUNITIES



PROJECT

COMPARK
VILLAGE
SOUTH

TOWN OF PARKER, COUNTY
OF DOUGLAS, COLORADO
80134

SHEET TITLE
CONCEPTUAL
RENDERINGS

CLUBHOUSE AMENITY BUILDING

SHEET NUMBER

47

COMPARK VILLAGE SOUTH
F1 AMD 2 - MULTIFAMILY
SITE PLAN

LOT 1, COMPARK VILLAGE FILING NO. 1, AMEND NO. 2
SOUTH HALF SECTION 6, TOWNSHIP 6 SOUTH, RANGE 66 WEST OF THE 6TH PRINCIPAL MERIDIAN
TOWN OF PARKER, COUNTY OF DOUGLAS, STATE OF COLORADO

PROJECT NUMBER
210512

DRAWN BY

DATE
06/01/2022



Architecture + Planning
820 16th Street, Suite 500
Denver, CO 80202
303.825.6400
ktgy.com



PREPARED FOR CENTURY
COMMUNITIES



PROJECT

COMPARK
VILLAGE
SOUTH

TOWN OF PARKER, COUNTY
OF DOUGLAS, COLORADO
80134

SHEET TITLE
CONCEPTUAL
RENDERINGS

CLUBHOUSE AMENITY BUILDING

SHEET NUMBER
48

COMPARK VILLAGE SOUTH
F1 AMD 2 - MULTIFAMILY
SITE PLAN

LOT 1, COMPARK VILLAGE FILING NO. 1, AMEND NO. 2
SOUTH HALF SECTION 6, TOWNSHIP 6 SOUTH, RANGE 66 WEST OF THE 6TH PRINCIPAL MERIDIAN
TOWN OF PARKER, COUNTY OF DOUGLAS, STATE OF COLORADO

PROJECT NUMBER
210512

DRAWN BY

DATE
06/01/2022



Architecture + Planning
820 16th Street, Suite 500
Denver, CO 80202
303.825.6400
ktgy.com



PREPARED FOR CENTURY
COMMUNITIES



PROJECT

COMPARK
VILLAGE
SOUTH

TOWN OF PARKER, COUNTY
OF DOUGLAS, COLORADO
80134

SHEET TITLE
CONCEPTUAL
RENDERINGS

SHEET NUMBER

49

CLUBHOUSE AMENITY BUILDING

COMPARK VILLAGE SOUTH
F1 AMD 2 - MULTIFAMILY
SITE PLAN

LOT 1, COMPARK VILLAGE FILING NO. 1, AMEND NO. 2
SOUTH HALF SECTION 6, TOWNSHIP 6 SOUTH, RANGE 66 WEST OF THE 6TH PRINCIPAL MERIDIAN
TOWN OF PARKER, COUNTY OF DOUGLAS, STATE OF COLORADO

PROJECT NUMBER
210512

DRAWN BY

DATE
06/01/2022



Architecture + Planning
820 16th Street, Suite 500
Denver, CO 80202
303.825.6400
ktgy.com



PREPARED FOR CENTURY
COMMUNITIES



PROJECT

COMPARK
VILLAGE
SOUTH

TOWN OF PARKER, COUNTY
OF DOUGLAS, COLORADO
80134

SHEET TITLE
CONCEPTUAL
RENDERINGS

CLUBHOUSE AMENITY BUILDING

SHEET NUMBER

51

COMPARK VILLAGE SOUTH
F1 AMD 2 - MULTIFAMILY
SITE PLAN

LOT 1, COMPARK VILLAGE FILING NO. 1, AMEND NO. 2
SOUTH HALF SECTION 6, TOWNSHIP 6 SOUTH, RANGE 66 WEST OF THE 6TH PRINCIPAL MERIDIAN
TOWN OF PARKER, COUNTY OF DOUGLAS, STATE OF COLORADO

PROJECT NUMBER
210512

DRAWN BY

DATE
06/01/2022



Architecture + Planning
820 16th Street, Suite 500
Denver, CO 80202
303.825.6400
ktgy.com



PREPARED FOR CENTURY
COMMUNITIES



PROJECT

COMPARK
VILLAGE
SOUTH

TOWN OF PARKER, COUNTY
OF DOUGLAS, COLORADO
80134

SHEET TITLE
CONCEPTUAL
RENDERINGS

SHEET NUMBER

52

MAINTENANCE SHED BUILDING

COMPARK VILLAGE SOUTH
F1 AMD 2 - MULTIFAMILY
SITE PLAN

LOT 1, COMPARK VILLAGE FILING NO. 1, AMEND NO. 2
SOUTH HALF SECTION 6, TOWNSHIP 6 SOUTH, RANGE 66 WEST OF THE 6TH PRINCIPAL MERIDIAN
TOWN OF PARKER, COUNTY OF DOUGLAS, STATE OF COLORADO

PROJECT NUMBER
210512

DRAWN BY

DATE
06/01/2022



Architecture + Planning
820 16th Street, Suite 500
Denver, CO 80202
ktgy.com
303.825.6400



3 BUILDING A - SIDE ELEVATION
1/16" = 1'-0"



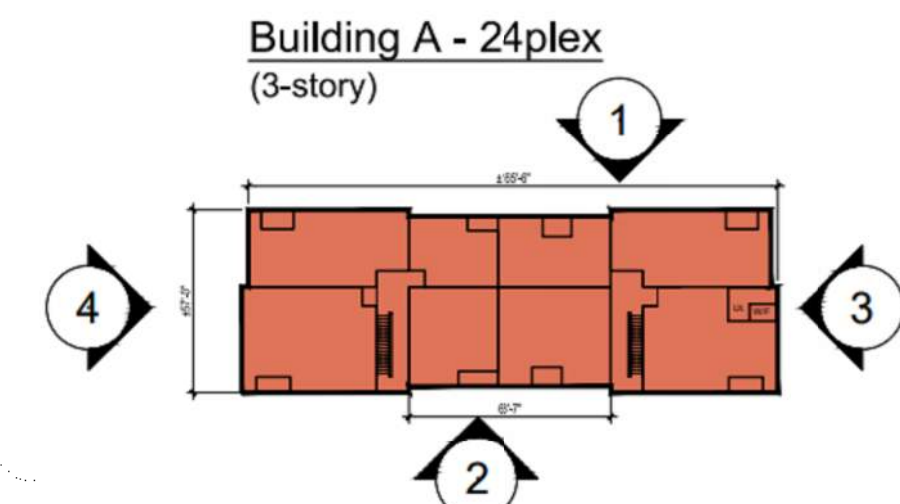
4 BUILDING A - SIDE ELEVATION
1/16" = 1'-0"



2 BUILDING A - REAR ELEVATION
1/16" = 1'-0"



1 BUILDING A - FRONT ELEVATION
1/16" = 1'-0"



Key Map n.t.s

#	KEYNOTES - SIP
1	BRICK - RUNNING - COLOR 1
2	BRICK - RUNNING - COLOR 2
3	FIBER CEMENT PANELING - COLOR 1
4	FIBER CEMENT PANELING - COLOR 2
5	FIBER CEMENT PANELING - COLOR 3
6	FIBER CEMENT PANELING - COLOR 4
7	METAL PANEL - COLOR 1
8	METAL PANEL - COLOR 2
9	BOARD AND BATTEN - COLOR 1
10	BOARD AND BATTEN - COLOR 2
11	VERTICAL SIDING - COLOR 1
12	VERTICAL SIDING - COLOR 2
13	VERTICAL SIDING - COLOR 3
14	VERTICAL SIDING - COLOR 4
15	VERTICAL SIDING - COLOR 5
16	VINYL WINDOW
18	METAL RAILING
19	MECHANICAL SCREEN - 58% OPEN WIRE MESH - COLOR 1 (BLACK)
20	STOREFRONT
21	COLUMN
22	ASPHALT SHINGLE ROOFING
23	BOARD & BATTEN - COLOR 3 - DARK GREY
24	STONE - COLOR 1
25	EXTERIOR LIGHT FIXTURE
26	HORIZONTAL SIDING - COLOR 1
27	HORIZONTAL SIDING - COLOR 2
28	HORIZONTAL SIDING - COLOR 3
29	HORIZONTAL SIDING - COLOR 4
30	HORIZONTAL SIDING - COLOR 5
32	DOWNSPOUT

NOTES:
1. SEE MATERIAL BOARDS FOR MORE INFORMATION.
2. SEE SITE PLAN FOR DIMENSIONS BETWEEN ENTRIES.
3. GROUND FLOOR TRANSPARENCY TO BE MIN. OF 25% MEASURED AS A PERCENTAGE OF GLAZING AT THE BASE OF THE BUILDING.
4. UPPER FLOOR TRANSPARENCY TO BE MIN. OF 15% GLAZING MEASURED AS A PERCENTAGE OF GLAZING ON THE MIDDLE OF THE BUILDING.
5. TRIM AROUND WINDOWS SHALL BE A MINIMUM OF THREE AND ONE-HALF (3 1/2) INCHES WIDE, AND TRIM AROUND DOORS SHOULD BE A MINIMUM OF TWO (2) INCHES WIDE.

PREPARED FOR CENTURY COMMUNITIES



PROJECT

COMPARK VILLAGE SOUTH

TOWN OF PARKER, COUNTY OF DOUGLAS, COLORADO 80134

SHEET TITLE

BUILDING A ELEVATIONS

SHEET NUMBER

53

COMPARK VILLAGE SOUTH
F1 AMD 2 - MULTIFAMILY
SITE PLAN

LOT 1, COMPARK VILLAGE FILING NO. 1, AMEND NO. 2
SOUTH HALF SECTION 6, TOWNSHIP 6 SOUTH, RANGE 66 WEST OF THE 6TH PRINCIPAL MERIDIAN
TOWN OF PARKER, COUNTY OF DOUGLAS, STATE OF COLORADO



KEY MAP - n.t.s
BUILDING A

PROJECT NUMBER
210512
DRAWN BY
DATE
06/01/2022



Architecture + Planning
820 16th Street, Suite 500
Denver, CO 80202
ktgy.com
303.825.6400

PREPARED FOR CENTURY
COMMUNITIES



PROJECT
**COMPARK
VILLAGE
SOUTH**

TOWN OF PARKER,
COUNTY
OF DOUGLAS, COLORADO
80134

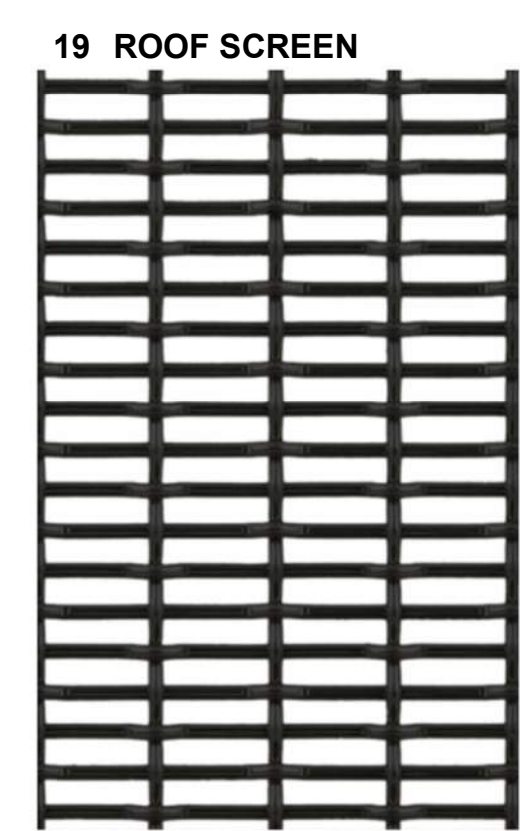
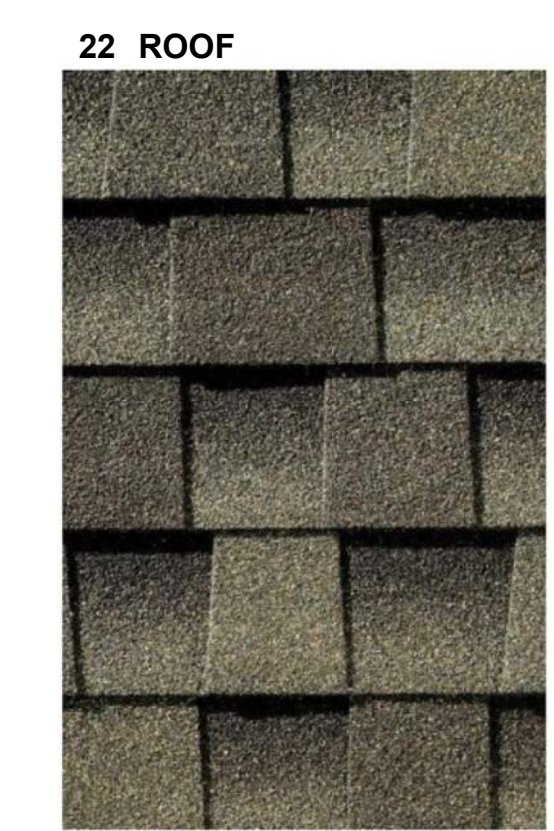
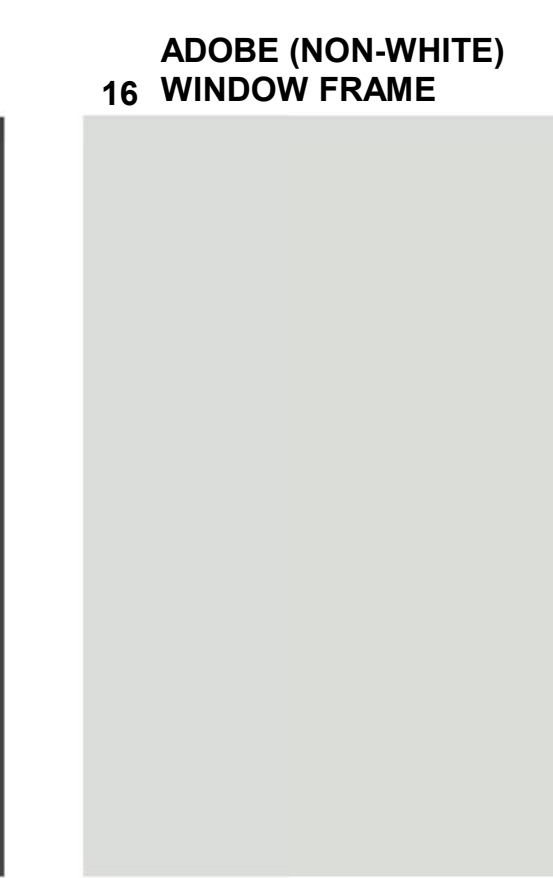
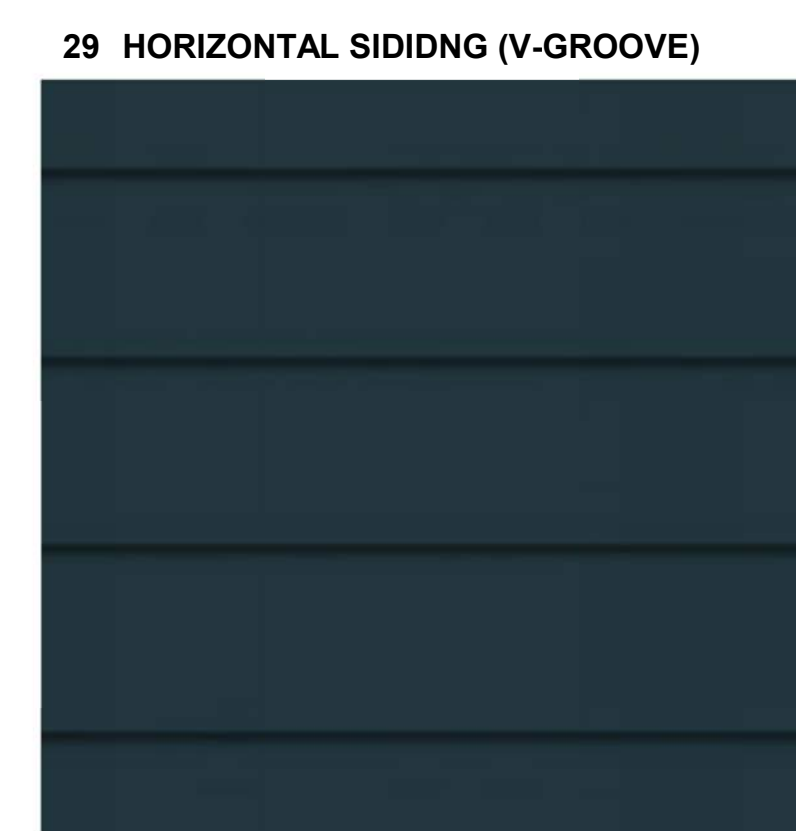
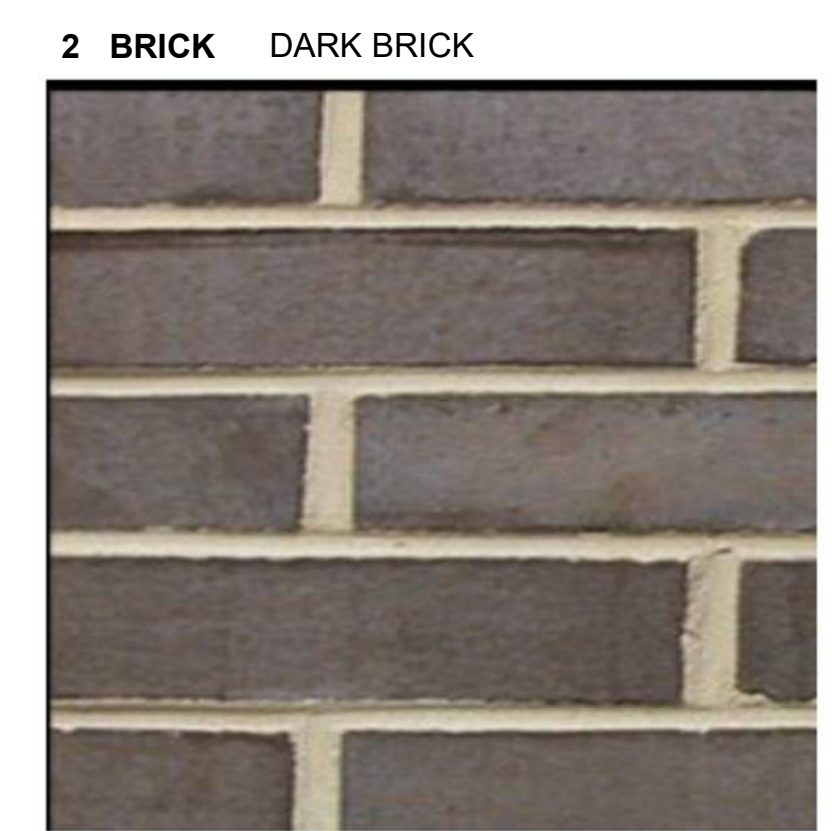
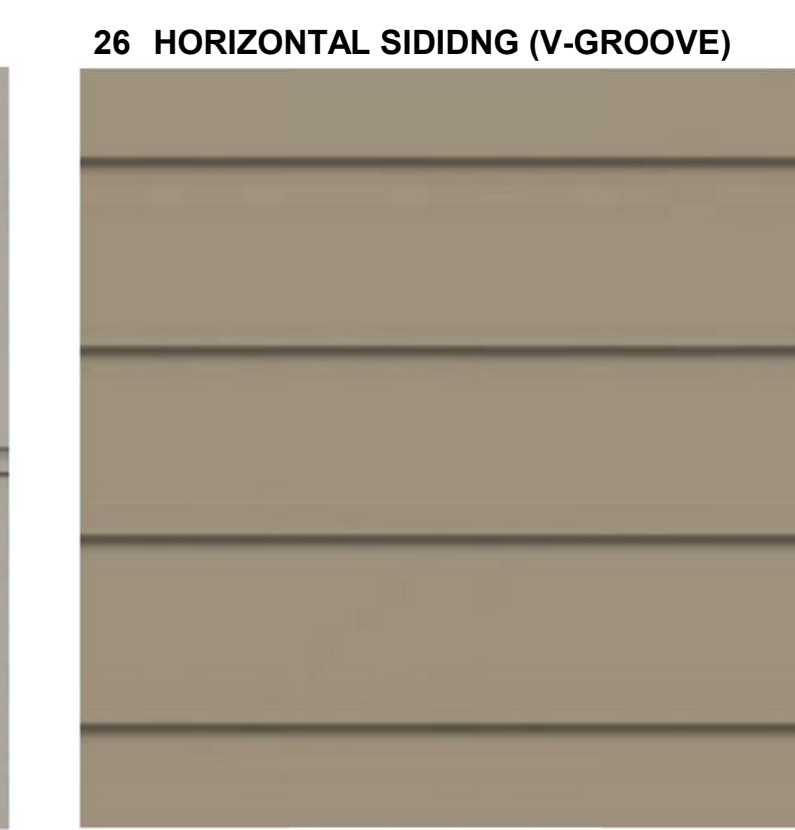
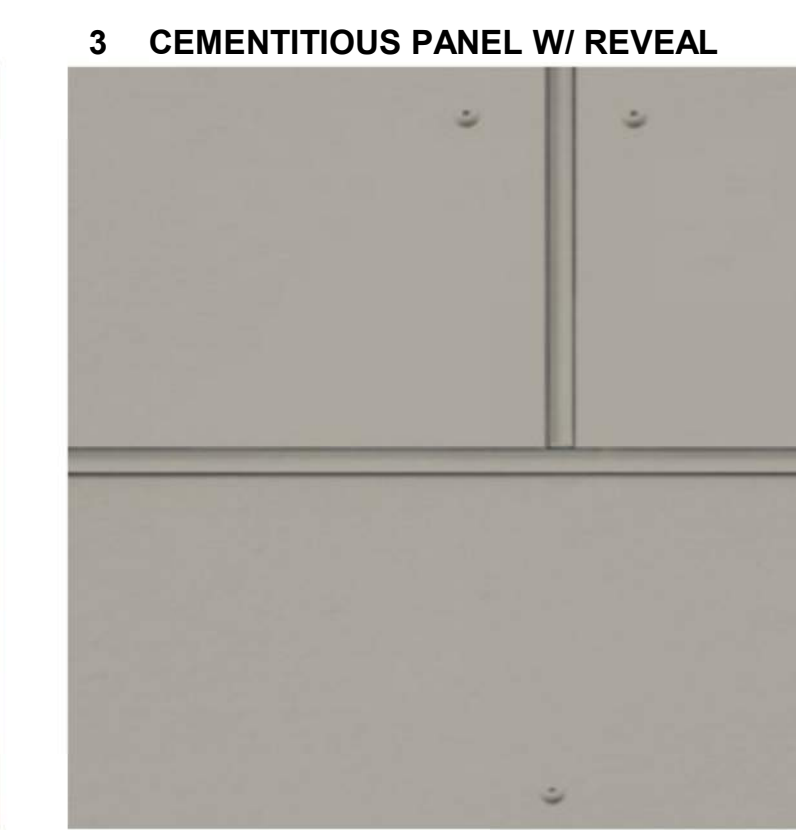
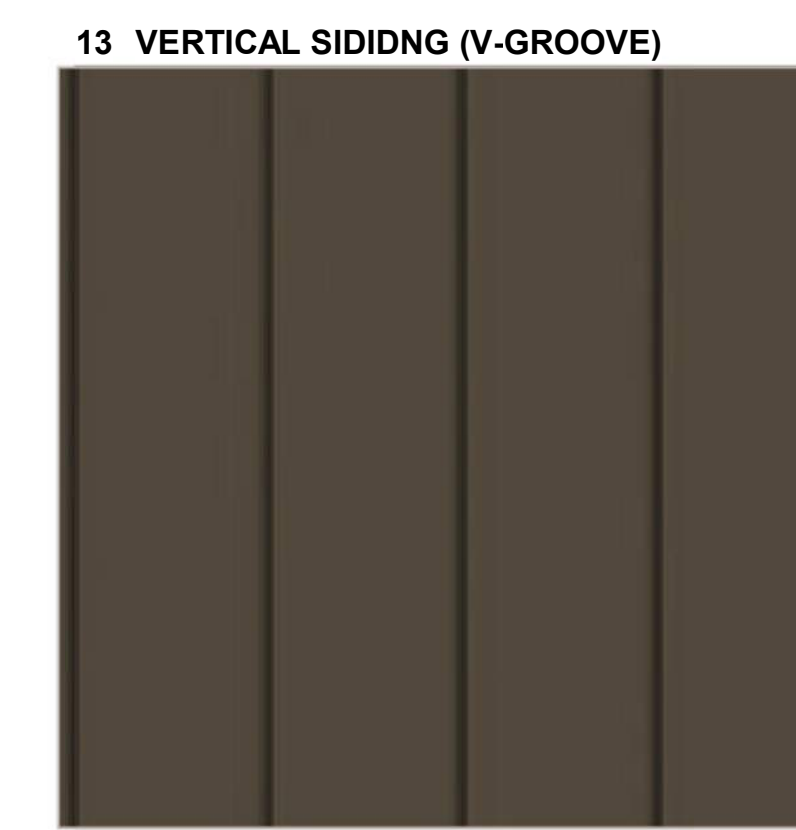
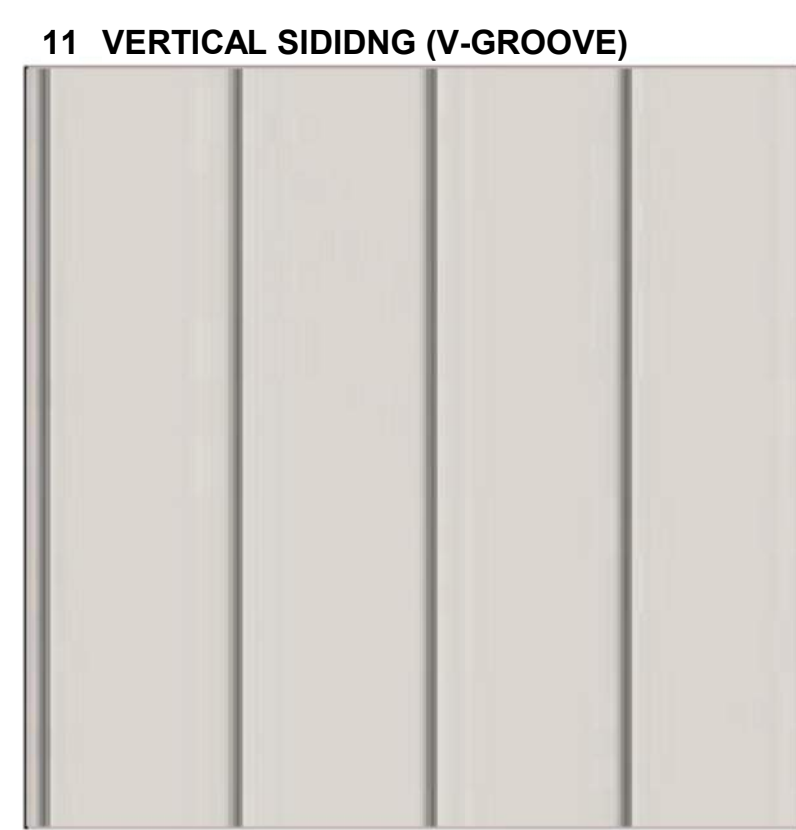
SHEET TITLE
**BLDG A
MATERIAL
BOARD**

SHEET NUMBER
54

1 16 11 29 27 7 5 12 22 19 1 13 30 27 18 3 26 27 5 13 12 5 7 27 29 11 1



FRONT ELEVATION
Note: Trim around windows shall be minimum of three and one-half (3-1/2) inches wide, and trim around doors shall be a minimum of (2) inches wide.



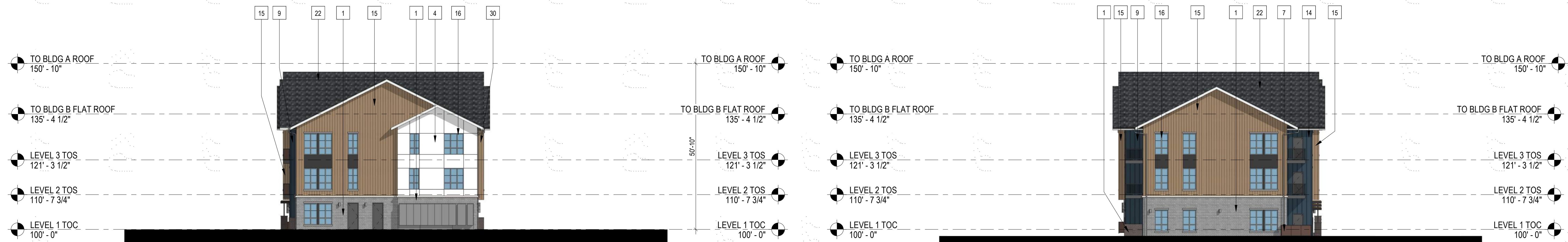
COMPARK VILLAGE SOUTH
F1 AMD 2 - MULTIFAMILY
SITE PLAN

LOT 1, COMPARK VILLAGE FILING NO. 1, AMEND NO. 2
SOUTH HALF SECTION 6, TOWNSHIP 6 SOUTH, RANGE 66 WEST OF THE 6TH PRINCIPAL MERIDIAN
TOWN OF PARKER, COUNTY OF DOUGLAS, STATE OF COLORADO

PROJECT NUMBER
210512
DRAWN BY
DATE
06/01/2022



Architecture + Planning
820 16th Street, Suite 500
Denver, CO 80202
ktgy.com
303.825.6400



3 BUILDING B - SIDE ELEVATION
1/16" = 1'-0"

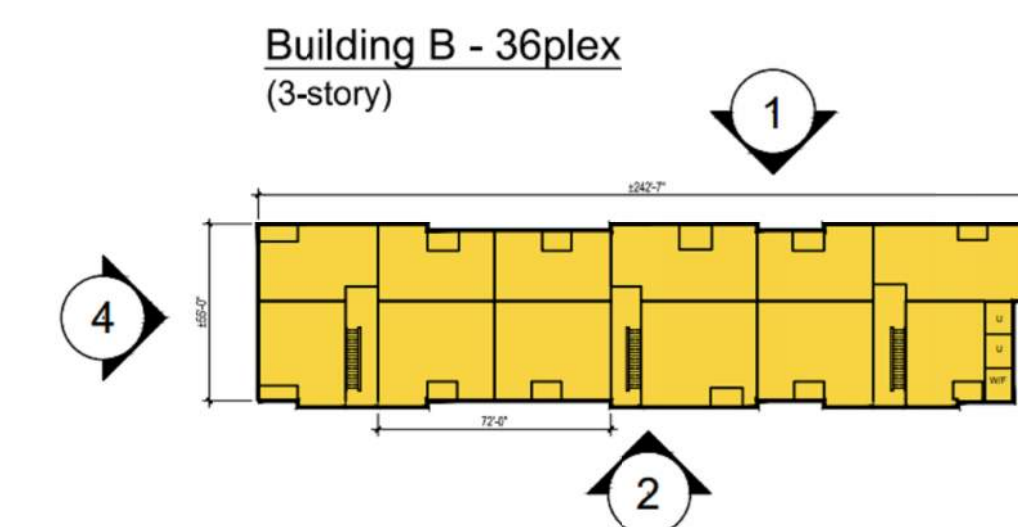
4 BUILDING B - SIDE ELEVATION
1/16" = 1'-0"



2 BUILDING B - REAR ELEVATION
1/16" = 1'-0"



1 BUILDING B - FRONT ELEVATION
1/16" = 1'-0"



#	KEYNOTES - SIP
1	BRICK - RUNNING - COLOR 1
2	BRICK - RUNNING - COLOR 2
3	FIBER CEMENT PANELING - COLOR 1
4	FIBER CEMENT PANELING - COLOR 2
5	FIBER CEMENT PANELING - COLOR 3
6	FIBER CEMENT PANELING - COLOR 4
7	METAL PANEL - COLOR 1
8	METAL PANEL - COLOR 2
9	BOARD AND BATTEN - COLOR 1
10	BOARD AND BATTEN - COLOR 2
11	VERTICAL SIDING - COLOR 1
12	VERTICAL SIDING - COLOR 2
13	VERTICAL SIDING - COLOR 3
14	VERTICAL SIDING - COLOR 4
15	VERTICAL SIDING - COLOR 5
16	VINYL WINDOW
17	METAL RAILING
18	MECHANICAL SCREEN - 58% OPEN WIRE MESH - COLOR 1 (BLACK)
19	STOREFRONT
20	COLUMN
21	ASPHALT SHINGLE ROOFING
22	BOARD & BATTEN - COLOR 3 - DARK GREY
23	STONE - COLOR 1
24	EXTERIOR LIGHT FIXTURE
25	HORIZONTAL SIDING - COLOR 1
26	HORIZONTAL SIDING - COLOR 2
27	HORIZONTAL SIDING - COLOR 3
28	HORIZONTAL SIDING - COLOR 4
29	HORIZONTAL SIDING - COLOR 5
30	DOWNSPOUT

NOTES:
1. SEE MATERIAL BOARDS FOR MORE INFORMATION.
2. SEE SITE PLAN FOR DIMENSIONS BETWEEN ENTRIES.
3. GROUND FLOOR TRANSPARENCY TO BE MIN. OF 25% MEASURED AS A PERCENTAGE OF GLAZING AT THE BASE OF THE BUILDING.
4. UPPER FLOOR TRANSPARENCY TO BE MIN. OF 15% GLAZING MEASURED AS A PERCENTAGE OF GLAZING ON THE MIDDLE OF THE BUILDING.
5. TRIM AROUND WINDOWS SHALL BE A MINIMUM OF THREE AND ONE-HALF (3 1/2) INCHES WIDE, AND TRIM AROUND DOORS SHOULD BE A MINIMUM OF TWO (2) INCHES WIDE.

PREPARED FOR CENTURY COMMUNITIES



PROJECT
COMPARK VILLAGE SOUTH

TOWN OF PARKER, COUNTY OF DOUGLAS, COLORADO 80134

SHEET TITLE
BUILDING B ELEVATIONS

SHEET NUMBER
55

COMPARK VILLAGE SOUTH
F1 AMD 2 - MULTIFAMILY
SITE PLAN

LOT 1, COMPARK VILLAGE FILING NO. 1, AMEND NO. 2
SOUTH HALF SECTION 6, TOWNSHIP 6 SOUTH, RANGE 66 WEST OF THE 6TH PRINCIPAL MERIDIAN
TOWN OF PARKER, COUNTY OF DOUGLAS, STATE OF COLORADO

PROJECT NUMBER
210512

DRAWN BY

DATE
06/01/2022



Architecture + Planning
820 16th Street, Suite 500
Denver, CO 80202
ktgy.com
303.825.6400



KEY MAP - n.t.s
BUILDING B



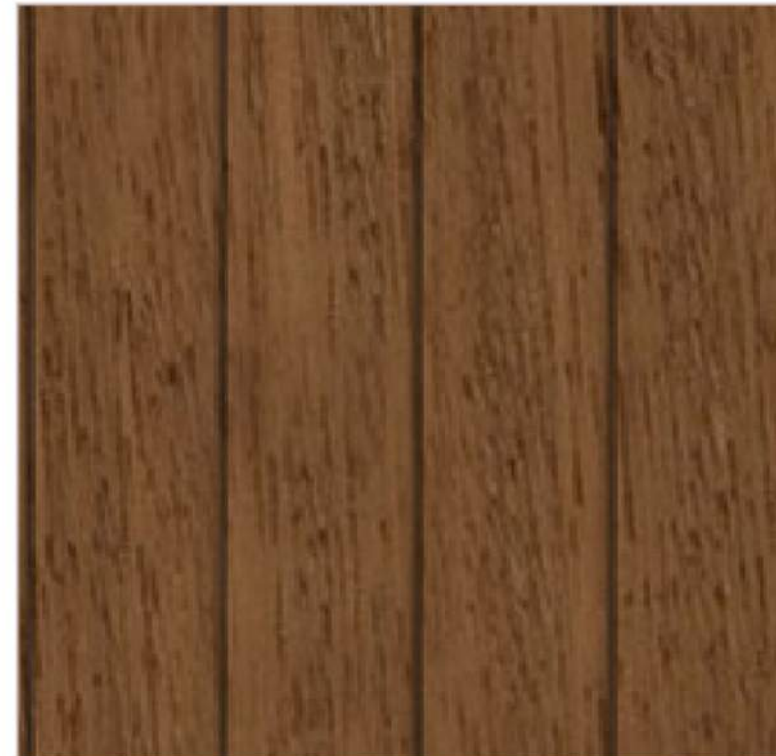
FRONT ELEVATION

Note: Trim around windows shall be minimum of three and one-half (3-1/2) inches wide, and trim around doors shall be a minimum of (2) inches wide.

1 BRICK LIGHT BRICK



15 VERTICAL SIDING (WOOD TONE)



13 VERTICAL SIDING (V-GROOVE)



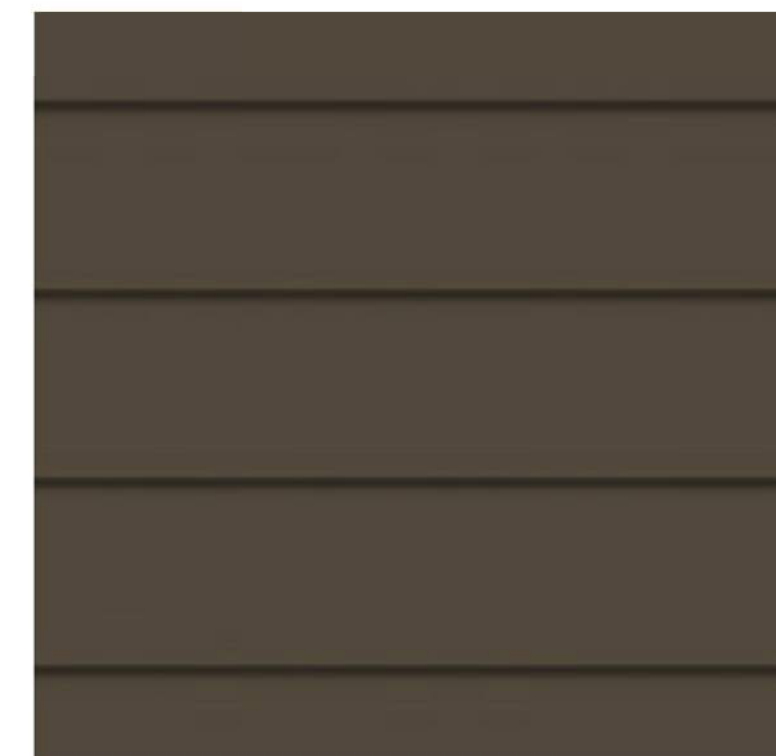
12 VERTICAL SIDING (V-GROOVE)



4 CEMENTITIOUS PANEL W/ REVEAL



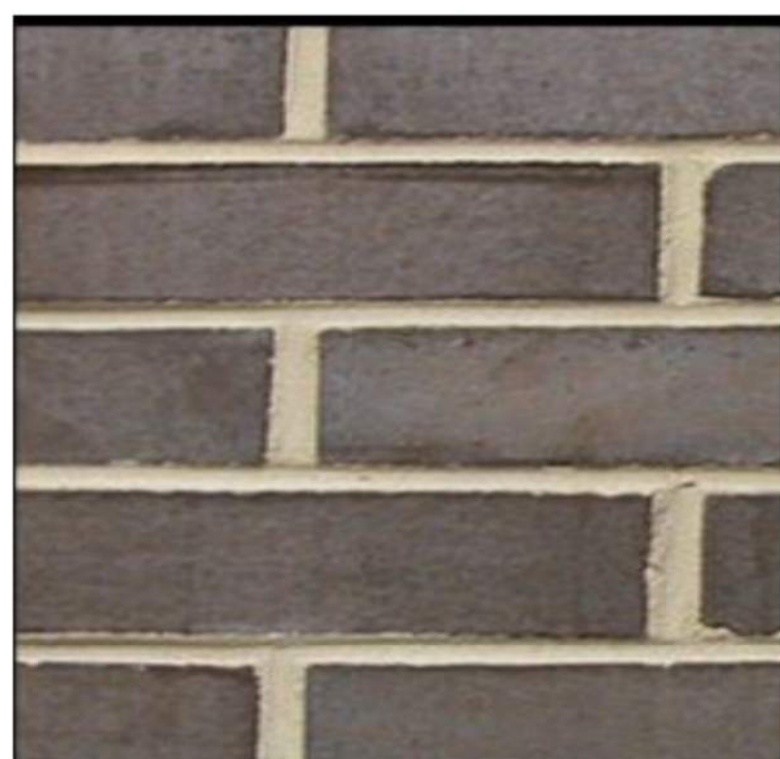
30 HORIZONTAL SIDING (V-GROOVE)



27 HORIZONTAL SIDING (V-GROOVE)



2 BRICK DARK BRICK



7 METAL PANEL



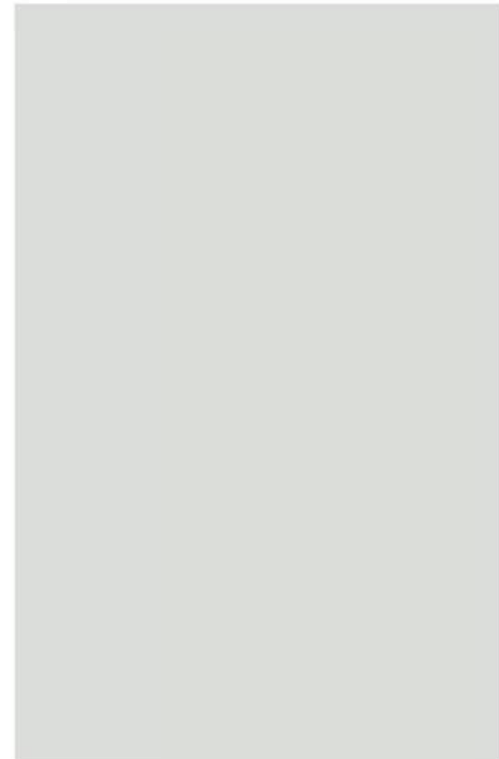
6 CEMENTITIOUS PANEL



5 CEMENTITIOUS PANEL



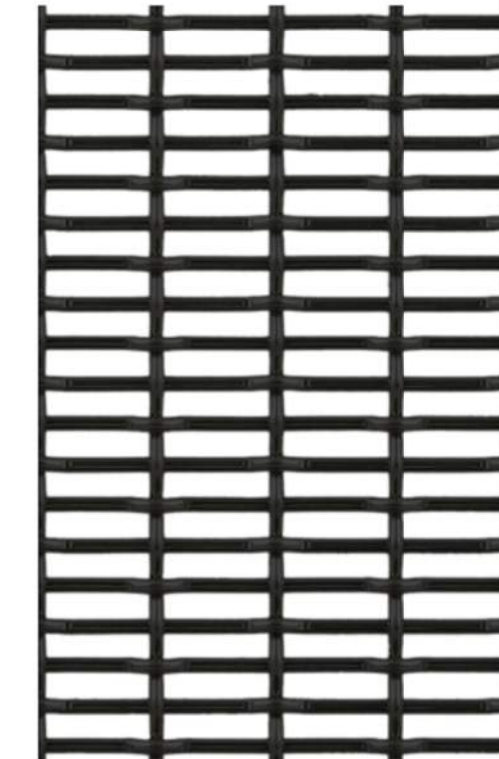
ADOBE (NON-WHITE)
16 WINDOW FRAME



22 ROOF



19 ROOF SCREEN



PREPARED FOR CENTURY
COMMUNITIES



PROJECT

COMPARK
VILLAGE
SOUTH

TOWN OF PARKER,
COUNTY
OF DOUGLAS, COLORADO
80134

SHEET TITLE

BLDG B
MATERIAL
BOARD

SHEET NUMBER

56

COMPARK VILLAGE SOUTH
F1 AMD 2 - MULTIFAMILY
SITE PLAN

LOT 1, COMPARK VILLAGE FILING NO. 1, AMEND NO. 2
SOUTH HALF SECTION 6, TOWNSHIP 6 SOUTH, RANGE 66 WEST OF THE 6TH PRINCIPAL MERIDIAN
TOWN OF PARKER, COUNTY OF DOUGLAS, STATE OF COLORADO

PROJECT NUMBER
210512

DRAWN BY

DATE
06/01/2022



Architecture + Planning
820 16th Street, Suite 500
Denver, CO 80202
ktgy.com
303.825.6400



3 BUILDING C - SIDE ELEVATION
1/16" = 1'-0"



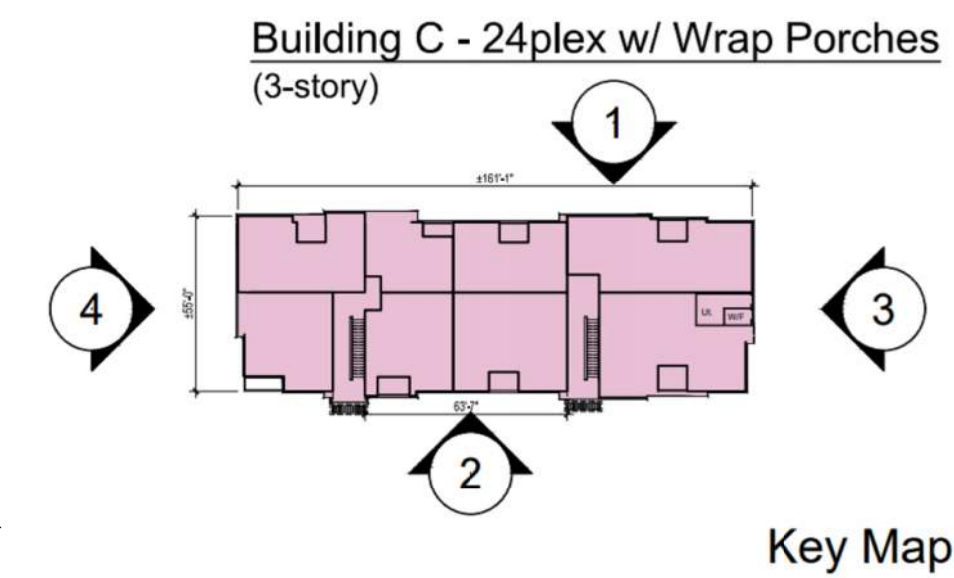
4 BUILDING C - SIDE ELEVATION
1/16" = 1'-0"



2 BUILDING C - REAR ELEVATION
1/16" = 1'-0"



1 BUILDING C - FRONT ELEVATION
1/16" = 1'-0"



KEYNOTES - SIP

- | # | KEYNOTES - SIP |
|----|--|
| 1 | BRICK - RUNNING - COLOR 1 |
| 2 | BRICK - RUNNING - COLOR 2 |
| 3 | FIBER CEMENT PANELING - COLOR 1 |
| 4 | FIBER CEMENT PANELING - COLOR 2 |
| 5 | FIBER CEMENT PANELING - COLOR 3 |
| 6 | FIBER CEMENT PANELING - COLOR 4 |
| 7 | METAL PANEL - COLOR 1 |
| 8 | METAL PANEL - COLOR 2 |
| 9 | BOARD AND BATTEN - COLOR 1 |
| 10 | BOARD AND BATTEN - COLOR 2 |
| 11 | VERTICAL SIDING - COLOR 1 |
| 12 | VERTICAL SIDING - COLOR 2 |
| 13 | VERTICAL SIDING - COLOR 3 |
| 14 | VERTICAL SIDING - COLOR 4 |
| 15 | VERTICAL SIDING - COLOR 5 |
| 16 | VINYL WINDOW |
| 18 | METAL RAILING |
| 19 | MECHANICAL SCREEN - 58% OPEN WIRE MESH - COLOR 1 (BLACK) |
| 20 | STOREFRONT |
| 21 | COLUMN |
| 22 | ASPHALT SHINGLE ROOFING |
| 23 | BOARD & BATTEN - COLOR 3 - DARK GREY |
| 24 | STONE - COLOR 1 |
| 25 | EXTERIOR LIGHT FIXTURE |
| 26 | HORIZONTAL SIDING - COLOR 1 |
| 27 | HORIZONTAL SIDING - COLOR 2 |
| 28 | HORIZONTAL SIDING - COLOR 3 |
| 29 | HORIZONTAL SIDING - COLOR 4 |
| 30 | HORIZONTAL SIDING - COLOR 5 |
| 32 | DOWNSPOUT |

- NOTES
- SEE MATERIAL BOARDS FOR MORE INFORMATION.
 - SEE SITE PLAN FOR DIMENSIONS BETWEEN ENTRIES.
 - GROUND FLOOR TRANSPARENCY TO BE MIN. OF 25% MEASURED AS A PERCENTAGE OF GLAZING AT THE BASE OF THE BUILDING
 - UPPER FLOOR TRANSPARENCY TO BE MIN. OF 15% GLAZING MEASURED AS A PERCENTAGE OF GLAZING ON THE MIDDLE OF THE BUILDING.
 - TRIM AROUND WINDOWS SHALL BE A MINIMUM OF THREE AND ONE-HALF (3 1/2) INCHES WIDE, AND TRIM AROUND DOORS SHOULD BE A MINIMUM OF TWO (2) INCHES WIDE.

PREPARED FOR CENTURY COMMUNITIES



PROJECT

COMPARK VILLAGE SOUTH

TOWN OF PARKER, COUNTY OF DOUGLAS, COLORADO 80134

SHEET TITLE

BUILDING C ELEVATIONS

SHEET NUMBER

57

COMPARK VILLAGE SOUTH
F1 AMD 2 - MULTIFAMILY
SITE PLAN

LOT 1, COMPARK VILLAGE FILING NO. 1, AMEND NO. 2
SOUTH HALF SECTION 6, TOWNSHIP 6 SOUTH, RANGE 66 WEST OF THE 6TH PRINCIPAL MERIDIAN
TOWN OF PARKER, COUNTY OF DOUGLAS, STATE OF COLORADO



KEY MAP - n.t.s
BUILDING C

PROJECT NUMBER
210512
DRAWN BY
DATE
06/01/2022



Architecture + Planning
820 16th Street, Suite 500
Denver, CO 80202
ktgy.com
303.825.6400

PREPARED FOR CENTURY
COMMUNITIES



PROJECT

**COMPARK
VILLAGE
SOUTH**

TOWN OF PARKER,
COUNTY
OF DOUGLAS, COLORADO
80134

SHEET TITLE

**BLDG C
MATERIAL
BOARD**

SHEET NUMBER

58



FRONT ELEVATION

Note: Trim around windows shall be minimum of three and one-half (3-1/2) inches wide, and trim around doors shall be a minimum of (2) inches wide.

1 BRICK LIGHT BRICK



15 VERTICAL SIDING (WOOD TONE)



13 VERTICAL SIDING (V-GROOVE)



6 CEMENTITIOUS PANEL W/ REVEAL



4 CEMENTITIOUS PANEL W/ REVEAL



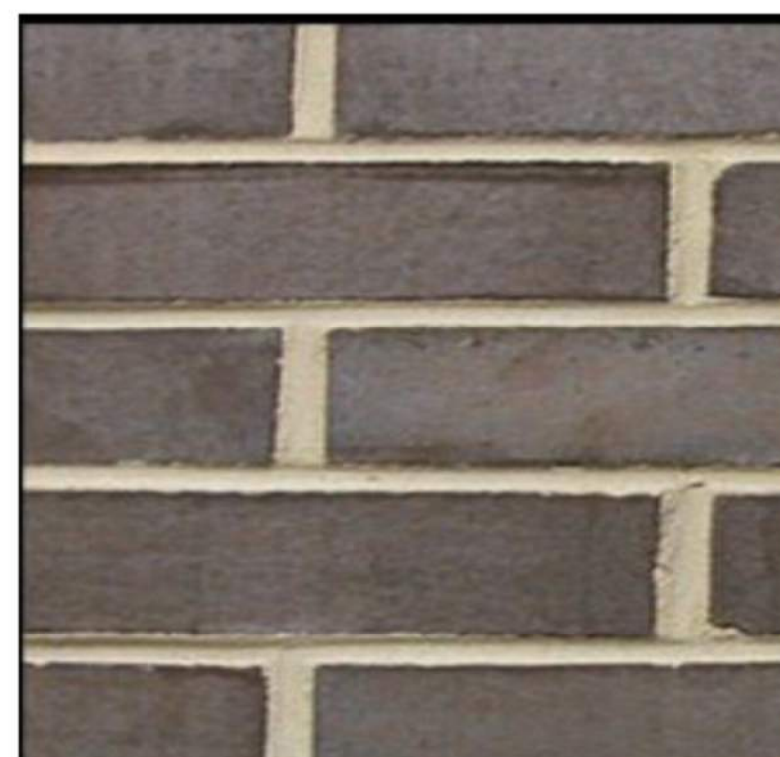
28 HORIZONTAL SIDING (V-GROOVE)



27 HORIZONTAL SIDING (V-GROOVE)



2 BRICK DARK BRICK



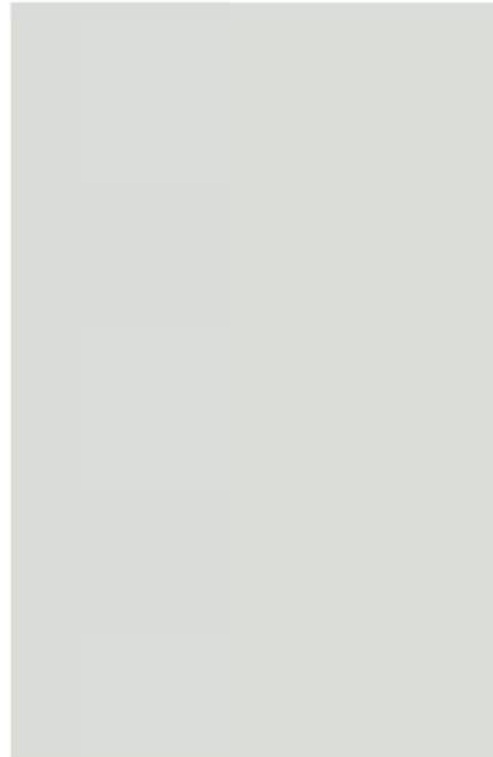
7 METAL PANEL



5 CEMENTITIOUS PANEL



**ADOBE (NON-WHITE)
16 WINDOW FRAME**



22 ROOF



19 ROOF SCREEN

